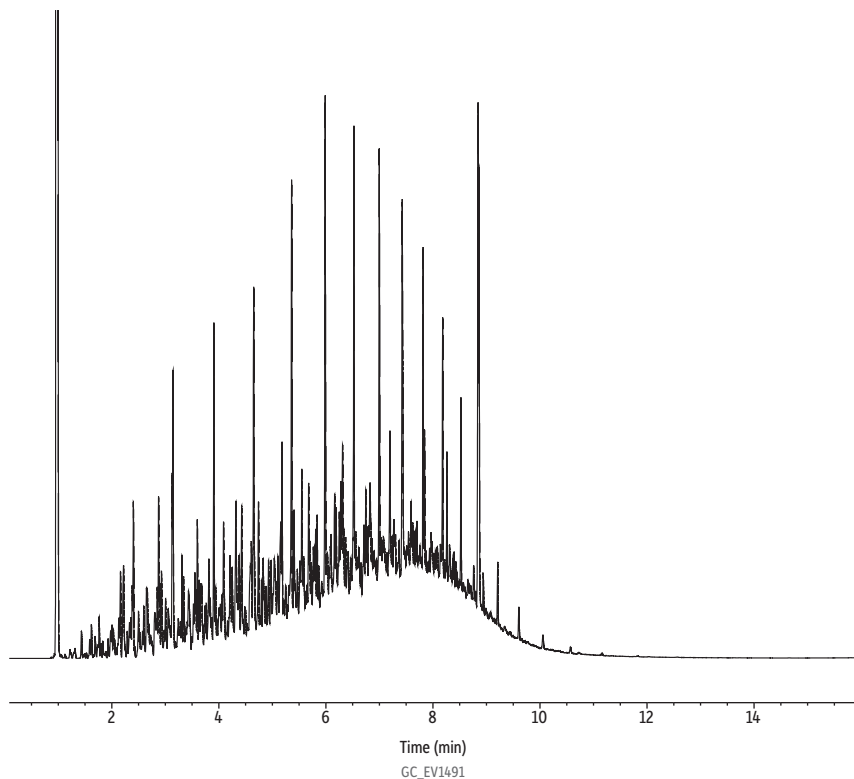


Diesel Fuel #2 Standard on Rxi-5Sil MS by Split Injection

- Fast analysis time.
- Split injection.



Column Rxi-5Sil MS, 30 m, 0.25 mm ID, 0.25 μ m (cat.# 13623)
Sample Diesel fuel #2: unweathered (cat.# 31233)
Diluent: Methylene chloride
Conc.: 5000 μ g/mL
Injection
Inj. Vol.: 1 μ L split (split ratio 10:1)
Liner: Topaz 4 mm ID Precision inlet liner w/ wool (cat.# 23305)
Inj. Temp.: 300 °C
Oven
Oven Temp.: 55 °C (hold 0.5 min) to 150 °C at 20 °C/min to 250 °C at 30 °C/min to 280 °C at 5 °C/min to 345 °C at 30 °C/min (hold 3 min)
Carrier Gas He, constant flow
Flow Rate: 4 mL/min
Detector FID @ 340 °C
Make-up Gas
Flow Rate: 45 mL/min
Make-up Gas
Type: N₂
Hydrogen flow: 40 mL/min
Air flow: 450 mL/min
Data Rate: 50 Hz
Instrument Agilent 7890A GC