

Harness the Power of Pro

Advance your lab with the performance and intelligence of next-generation
LC-mass detection—Agilent InfinityLab Pro iQ Series





Biopharma



Pharma



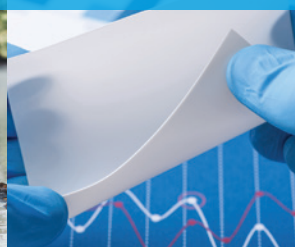
Food



Environmental



Chemical materials



Elevate Your Lab with Mass Confirmation as Easy as UV Detection

Measure masses large and small with ease

In fast-paced environments like research, development, or manufacturing, providing timely and accurate information is crucial for achieving success amidst growing sample numbers and complexity.

The Agilent InfinityLab Pro iQ Series is the game-changing next generation of LC-mass detection. These systems are built to effortlessly manage diverse analytical needs with confidence, ensuring you are ready to ride the wave of innovation with ease.



	Pro iQ	Pro iQ Plus
Mass range	m/z 2–1,600	m/z 2–3,000
Sensitivity*	< 100 fg	< 25 fg
Detection	Routine	Routine, trace, and extended mass range

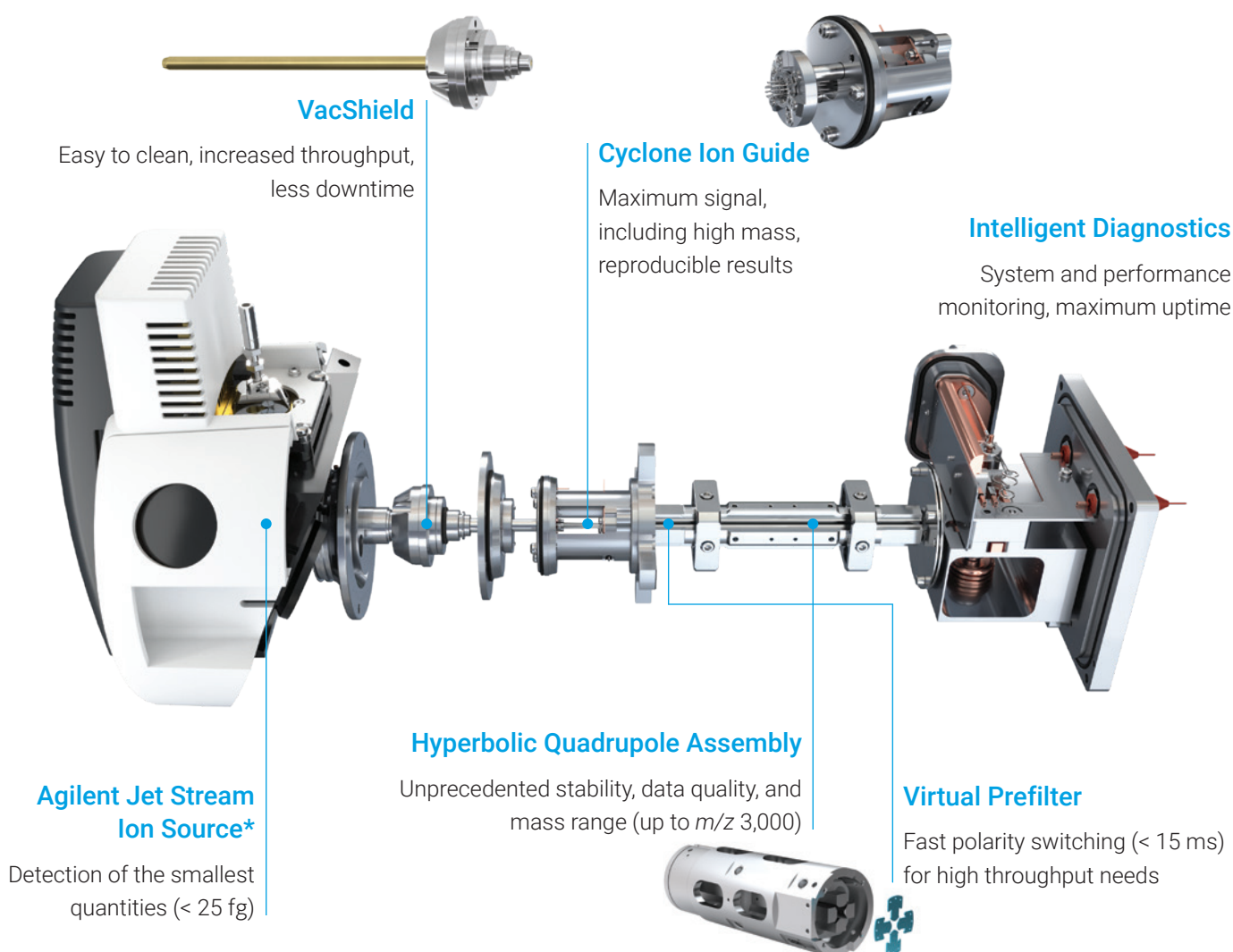
Applications: Mass confirmation | Impurity detection | Mass-based purification

* Instrument detection limit (IDL).

Innovative Performance

Experience unparalleled productivity

The Pro iQ Series mass detectors offer fast scan speed, a wide mass range, and unmatched sensitivity for ultimate flexibility and future-proofing, all within a small footprint that stacks easily with your LC. Sustainable features include standby mode and an optional energy-efficient, oil-free pump that help drive lab productivity and efficiency to new levels.



* Agilent Jet Stream (AJS) only available with Pro iQ Plus.

Flexibility to Ionize Diverse Samples

Manage molecular complexity with confidence



Our extensive upgradeable ion source options let you choose the ideal match for your specific application.

Electrospray ionization (ESI)

Analysis of a broad range of molecules



Agilent Jet Stream (AJS)*

Ultrahigh sensitivity ESI



Multimode source (MMI)

Simultaneous ESI and APCI to detect polar/nonpolar analytes in a single run



Atmospheric pressure chemical ionization source (APCI)

Difficult to analyze polar/nonpolar analytes



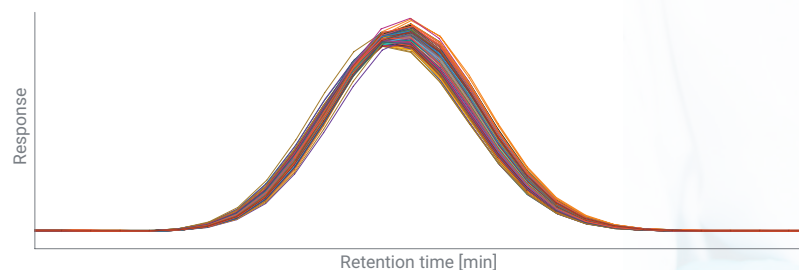
* Agilent Jet Stream (AJS) only available with Pro iQ Plus.

Performance, flexibility, and robustness

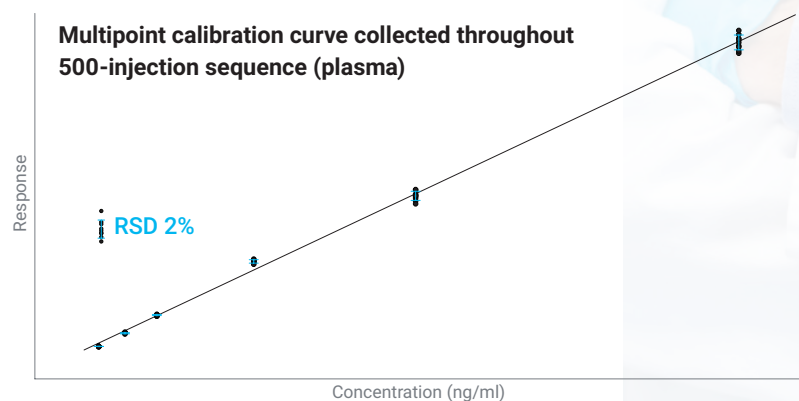
Robustness You Can Depend On

Unprecedented stability and reliability

With the robustness necessary to confidently measure even your most challenging samples, the InfinityLab Pro iQ Series single quadrupole mass spectrometers deliver consistent performance and stability for maximum uptime across all your testing needs.



Agilent InfinityLab Pro iQ Plus overlay of 100 consecutive injections of a small molecule in crashed plasma.



Small molecule calibration curve (1, 5, 10, 25, 50, and 100 ppb). Data points at each calibration level, collected at intervals throughout a 500-injection sequence (plasma), demonstrate excellent sensitivity and dynamic range performance.



User-Friendly Instrument Intelligence

Maximum uptime and return on investment

Experience expert-level, high-quality data accessible to all skill levels without the burden of extensive training. Autotune, Auto Acquire, system health monitoring, diagnostics, and early maintenance feedback help to ensure instrument readiness, maximum uptime, and reliable results, giving you the peace of mind to keep up with deliverables.

Make sure your instrument is ready when you are

Start your day on a productive note with a scheduled autotune. Automatically set your Pro iQ instrument to tune and calibrate before you arrive or instruct the instrument to produce periodic checktune reports.

Monitor system health in real time

Early maintenance feedback actively monitors instrument metrics and reports the results to you. Each component has its own built-in monitor, so you can quickly and easily review the status and know the health of your instrument.

The 'Schedule Tune' dialog box, 'Checktune' tab, shows scheduling options. The 'Scheduling' section has radio buttons for 'Checktune' (selected), 'Weekly', and 'Monthly'. Below, the 'Autotune' section has a 'Recur every' dropdown set to '1' and a unit dropdown set to 'week(s)'. A list of days (Monday through Sunday) has checkboxes, with Monday, Wednesday, and Friday selected. The 'Start' date is '3/31/2025' and the 'Time' is '5:00 AM'. 'Save' and 'Cancel' buttons are at the bottom.

The 'Schedule Tune' dialog box, 'Autotune' tab, shows scheduling options. The 'Scheduling' section has radio buttons for 'Checktune', 'Autotune' (selected), 'Weekly', and 'Monthly'. Below, the 'Autotune' section has a 'Recur every' dropdown set to '1' and a unit dropdown set to 'month(s)'. A list of days (Monday through Sunday) has checkboxes, with Monday selected. The 'Start' date is '3/31/2025' and the 'Time' is '12:00 AM'. 'Save' and 'Cancel' buttons are at the bottom.

The 'Maintenance' dialog box, 'Early Maintenance Feedback Counters' tab, shows a list of instrument components with their status and maintenance thresholds. The components are: Autotune, Checktune, Injection count, Diverter valve switches, Rough pump, Gas filter, and Detector health. Each component has a status indicator (green bar or dot), an 'Alert threshold' (Days or Counts), a 'Remaining' value, and an 'Expires on' date. The 'Autotune' and 'Checktune' components have 'Alert threshold (Days)' and 'Expires on' fields. The 'Injection count' and 'Diverter valve switches' components have 'Alert threshold (Counts)' and 'Remaining (Counts)' fields. The 'Rough pump' and 'Gas filter' components have 'Alert threshold (Days)' and 'Expires on' fields. The 'Detector health' component has a 'Detector lifetime remaining (%)' field. The 'Nebulizer status', 'Capillary status', and 'Spray stability status' are shown as green checkmarks.

Seamlessly Integrate Mass Detection into Your LC Workflows

High-quality mass information accessible to chromatographers



InfinityLab Assist

Interactive touchscreen displays system health monitoring

Intelligence

Improve efficiency with assisted workflows

Performance

Maximize results with less effort

Confidence

Move forward with certainty

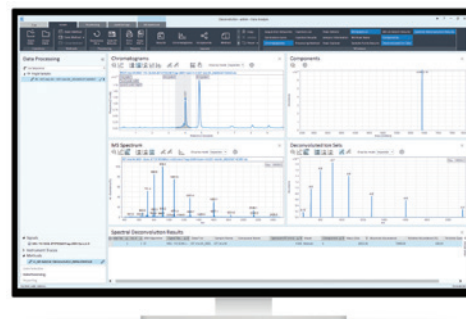


Whether you use a mass detector today or are looking to adopt and quickly deploy this technology, the Agilent InfinityLab Pro iQ Series is ready to support you. Pro iQ single quadrupole mass spectrometers seamlessly integrate with **Agilent OpenLab CDS** and the **Agilent Infinity III LC Series**, including **InfinityLab Assist**. This combination provides cost-efficient, streamlined mass confirmation and consistent, high-quality results (with optional open-access **MassHunter WalkUp** software).

Effortless integration with OpenLab CDS software

User-friendly interface and streamlined workflows

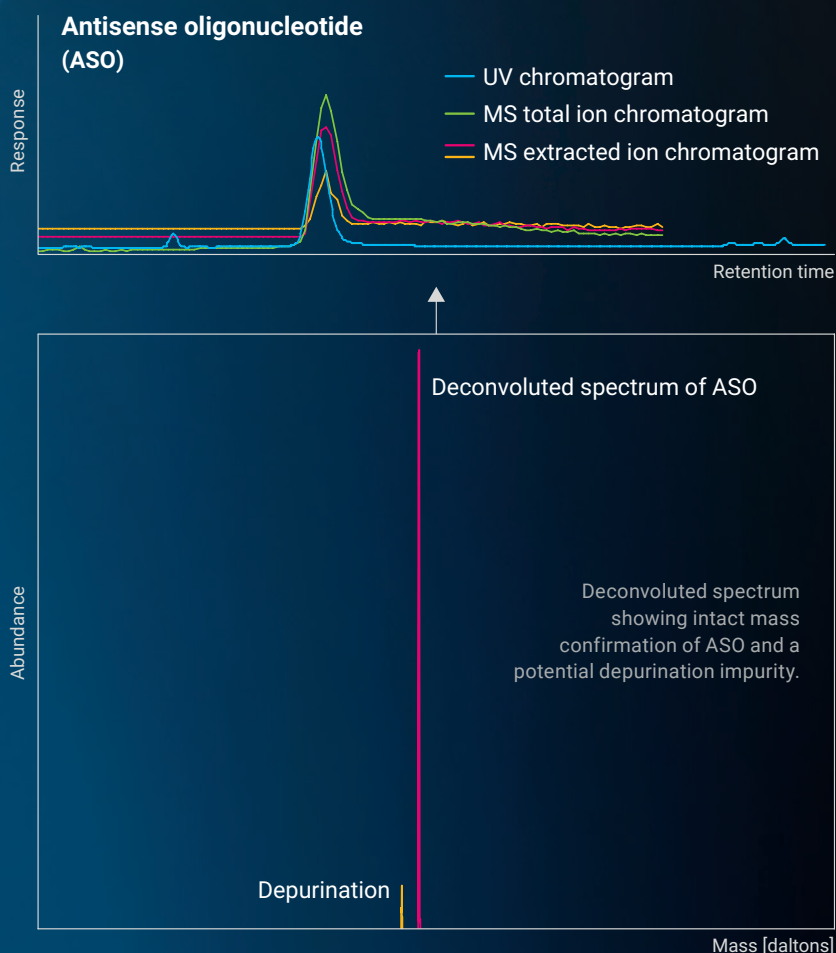
OpenLab CDS is the LC/MS software for data acquisition, data processing, and reporting for the Pro iQ systems, designed to handle your mass confirmation, impurity detection, and mass-based purification needs. Complete with built-in technical controls, this software helps to ensure data integrity and facilitate regulatory compliance.



See the Unseen with LC Mass Detection

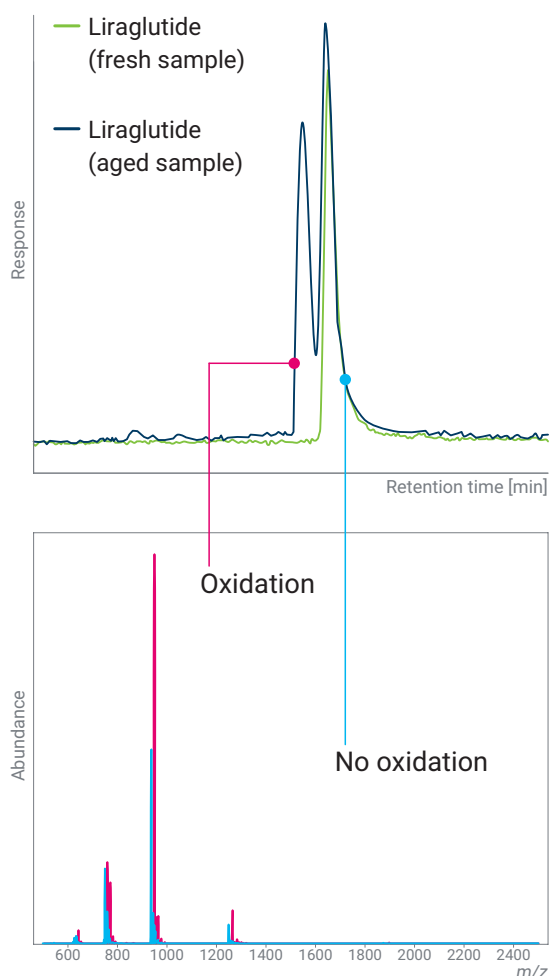
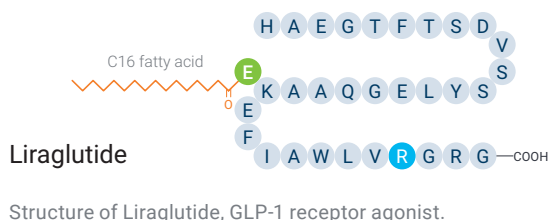
A wide mass range for biomolecule molecular weight confirmation

Implement mass detection quickly and add mass confirmation to your LC/UV methods. Separate and detect challenging, coeluting small molecule, peptide, and oligonucleotide active pharmaceutical ingredients (APIs) and impurities.



Unlock the Future of Quality Control

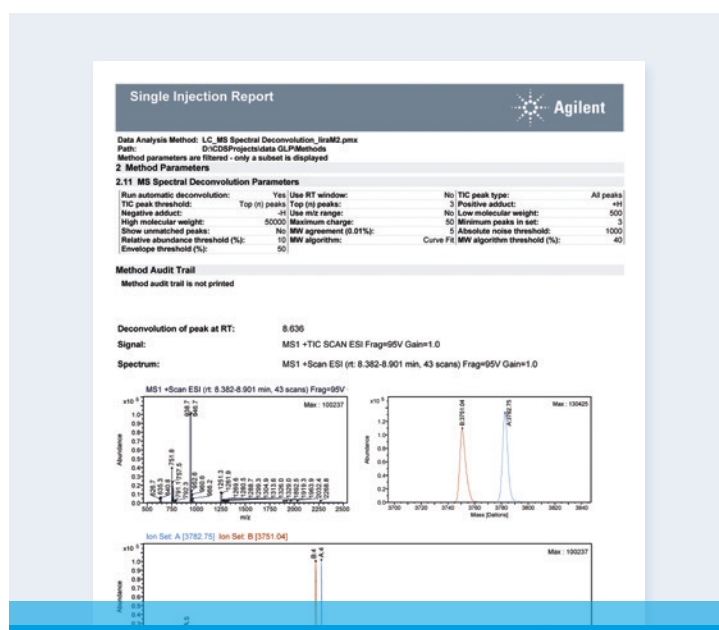
Your essential partner for identification and stability assessment



Oxidation analysis of Liraglutide.

Pro iQ Series mass detectors enable immediate identification and mass confirmation for small and large molecules. Achieve the readiness you need to meet the most challenging development programs, and accelerate development and transfer of methods confidently.

The Infinity III LC system and Pro iQ Plus instrument deliver superior separation and detection capabilities, capturing even the smallest trace impurities with unparalleled accuracy.

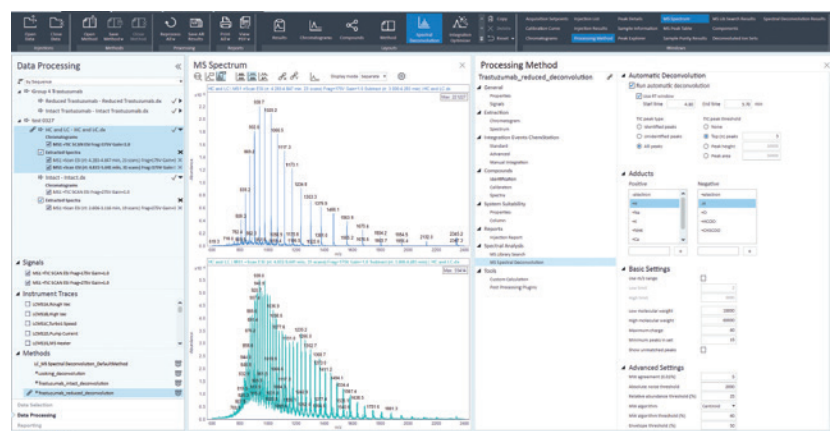


Example report from OpenLab CDS.

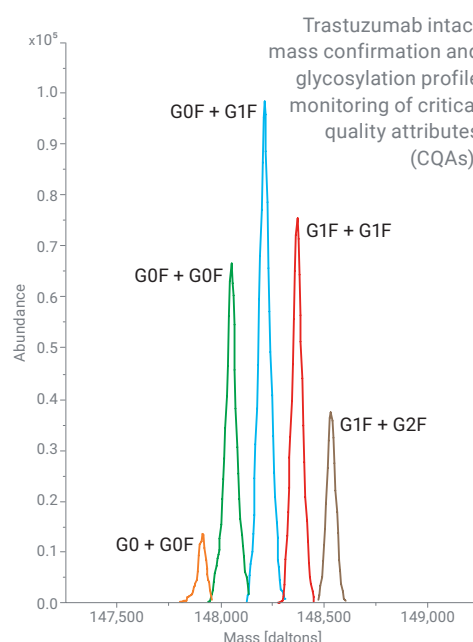
Automate Deconvolution Data Processing

Accurate and complete characterization of even your most challenging samples

Using automatic deconvolution, OpenLab CDS enables faster data processing to quickly confirm molecular weight from a data set.



Automatic deconvolution in OpenLab CDS.



Modernize Sample Isolation and Purification with Next-Gen Mass-Based Fraction Collection

Exceptional flexibility without compromising on quality

Maximize the potential of the InfinityLab LC purification system with OpenLab CDS

OpenLab CDS provides powerful, user-friendly tools that give you full control over analytical and preparative-scale purification workflows.



Agilent 1260 Infinity II Preparative LC/MSD System

Configure your system with UV and the Pro iQ Series, autosamplers, and multiple fraction collectors—built for maximum throughput.



Agilent 1290 Infinity II Preparative LC/MSD System

Maximize application flexibility in a compact footprint for optimized bench space. Experience precise mass-selective fraction triggering for confident purification with the Pro iQ Series.



Agilent 1290 Infinity II Autoscale Preparative LC/MSD System

The ultimate system for seamless scale-up—from method scouting to gram-level compound purification with unmatched precision and efficiency using mass-directed fraction collection.



Rapidly purify and characterize targets from complex mixtures or the smallest quantities. Attain high purity with walk-up, streamlined workflows that drive productivity. Our configurable systems easily meet your analytical to preparative workflow needs.

The image shows a female scientist in a laboratory setting, wearing a white lab coat, blue safety goggles, and blue nitrile gloves. She is holding a test tube containing a blue liquid. Below the image is a screenshot of the 'Fraction Collection' software interface.

Fraction Collection

☒ Enabled ☐ Disabled

UV MS

Peak Triggers MS



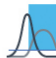

	1	2	3	4
Use	<input checked="" type="checkbox"/>	<input checked="" type="checkbox"/>	<input checked="" type="checkbox"/>	<input type="checkbox"/>
Peak Detector	G6170A: SG2409FP07	G6170A: SG2409FP07	G6170A: SG2409FP07	none
Used Signal	A	B	NOT	A
Peak Detection Mode	Threshold	Threshold	Threshold	Threshold

Fraction Collection

☒ Enabled
 ☐ Disabled

UV	MS	Peak Triggers MS			
		1	2	3	4
Use		<input checked="" type="checkbox"/>	<input checked="" type="checkbox"/>	<input checked="" type="checkbox"/>	<input type="checkbox"/>
Peak Detector		G6170A: SG2409PP07	G6170A: SG2409PP07	G6170A: SG2409PP07	none
Used Signal		A	B	NOT	A
Peak Detection Mode		Threshold	Threshold	Threshold	Threshold
Threshold		50000.000 counts	5000.000 counts	171139.333 coun...	5.000
Up Slope		5.00 counts/s	5.00 counts/s	5.00 counts/s	5.00
Down Slope		5.00 counts/s	5.00 counts/s	5.00 counts/s	5.00
Upper Threshold		1000000.000 cou...	1000000.000 cou...	1000000.000 cou...	3000.000
Limit Peak Duration		<input type="checkbox"/>	<input type="checkbox"/>	<input type="checkbox"/>	<input type="checkbox"/>
Max. Peak Duration		30.000 s	30.000 s	30.000 s	30.000 s

Trigger Combinations

☐ AND
 ☐ OR
 ☐ AND/OR
 ☒ GROUP

The figure displays five stacked chromatograms for the sample peak at 4.0 minutes. The x-axis for all plots is 'Time (minutes)' ranging from 0.0 to 7.0. The y-axis for the top three plots is 'Abundance'.

- TIC Scan 100.0-600.0 Positive:** Total Ion Chromatogram showing abundance vs. time. A significant peak is visible at 4.0 minutes.
- MPFC: $-t$, TIC SIMESI Mass=214.1, Adducts=(M+H) $^{+}$, (M+) $^{+}$:** Mass spectrum plot showing abundance vs. time. A sharp peak is observed at 4.0 minutes.
- MPFC: TIC SIMESI Mass=482.0, Adducts=(M+Na) $^{2+}$, (M+H) $^{+}$:** Mass spectrum plot showing abundance vs. time. A broad peak is observed around 1.0 minute.
- Signal Selection:** Plot showing abundance vs. time. A sharp peak is observed at 4.0 minutes.
- Quat. Pump: Pressure (bar):** Plot showing pressure in bar vs. time. The pressure starts at approximately 150 bar, remains relatively stable until 3.0 minutes, then drops to about 120 bar between 3.5 and 5.5 minutes, before rising back to 150 bar.
- DAD: Signal A (mAU)=310.0/4.0 min Reference = Off:** Plot showing signal in mAU vs. time. Three distinct peaks are visible at approximately 1.0, 3.0, and 4.0 minutes.

Edit compound

Compounds

Compound name	Compound formula	Monoisotopic mass	Fraction collector peak trigger
Sudan Orange G	C ₁₂ H ₁₃ N ₂ O ₂	214.1	C
Sunset Yellow FCF	C ₁₈ H ₁₃ N ₂ NaO ₇ S ₂	452.0	A
Potent Blue VF	C ₂₇ H ₃₁ N ₂ NaO ₆ S ₂	566.2	B

Dwell (ms)

Adducts

Positive Ions

- ☒ +H
- ☐ +Na
- ☐ +K
- ☐ +NH₄

Negative Ions

- ☐ -electron
- ☐ -H
- ☐ +Cl
- ☐ +Br
- ☐ +HCOO
- ☐ +CH₃COO
- ☐ +C₂H₃COO

Charge State

☒ 1

☐ 2

☐ 3

Compound name	Compound formula	Adduct species	z	Monoisotopic mass	Fraction collector peak trigger	m/z	Polarity
Sudan Orange G	C ₁₂ H ₁₃ N ₂ O ₂	(M+H) ⁺	1	214.1	C	215.1	Positive
Sudan Orange G	C ₁₂ H ₁₃ N ₂ O ₂	(M+H) ⁺	1	214.1	C	215.1	Negative
Sunset Yellow FCF	C ₁₈ H ₁₃ N ₂ NaO ₇ S ₂	(M-2Na) ₂ ⁻	2	452.0	A	209.0	Negative
Potent Blue VF	C ₂₇ H ₃₁ N ₂ NaO ₆ S ₂	(M+H) ⁺	1	566.2	B	567.2	Positive
Potent Blue VF	C ₂₇ H ₃₁ N ₂ NaO ₆ S ₂	(M+Na) ⁺	1	566.2	B	589.2	Positive
Potent Blue VF	C ₂₇ H ₃₁ N ₂ NaO ₆ S ₂	(M-(3Br)) ⁺	1	566.2	B	545.2	Positive
Potent Blue VF	C ₂₇ H ₃₁ N ₂ NaO ₆ S ₂	(M-Na) ₂ ⁻	1	566.2	B	543.2	Negative

Apply

13

Perform LC/MS with Confidence, Every Day



For routine to research labs, Agilent offers precisely matched consumables and supplies to get the best results from your LC/MS solutions.

LC columns

A wide selection of Agilent columns are available to match your large or small molecule applications.

LC/MS supplies

The small parts of the workflow can make a big difference in the quality of your results. Agilent InfinityLab LC and LC/MS supplies are designed to enhance the efficiency and ease of your daily tasks.

InfinityLab Flex Bench MS

The configurable, mobile Agilent InfinityLab Flex Bench MS keeps your LC and MS instrument modules in one stack. An integrated solution for waste management is included.

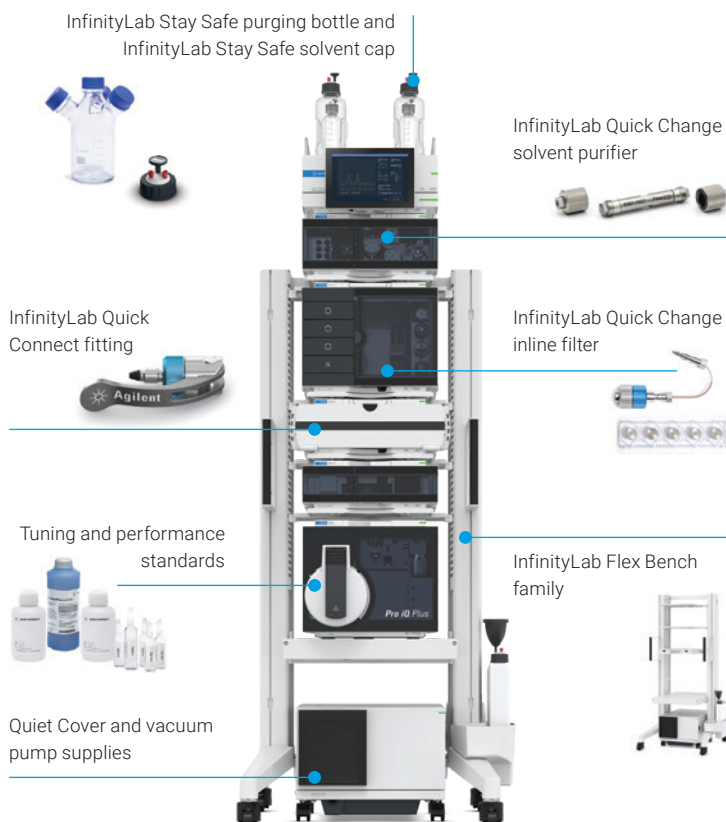


InfinityLab solvents for UHPLC and LC/MS

Expertly formulated Agilent InfinityLab solvents for analytical applications shield against common contaminants—ensuring optimal performance and minimizing the risk of costly downtime and repairs.

Quiet Cover

A pump acoustic enclosure provides a quieter lab environment by containing pump noise inside a sound-absorbing cabinet. Fan-controlled temperature and an audible temperature limit alarm help to reduce pump downtime. The easy-to-open cover enables the cleanup of spills, as well as quick oil changes and oil additions. An oil-free dry pump is also available.



More information: <https://www.agilent.com/chem/lc-ms-supplies>

Focus On What You Do Best



With Agilent CrossLab, we partner with you to implement solutions that optimize your lab's performance and productivity. That is why you can rely on us to provide the tools you need and protect your investment, backed by a global network of experienced Agilent-certified service professionals dedicated to the productivity of your lab.



Service plans

Agilent CrossLab service plans provide comprehensive, customizable coverage to suit your specific needs and budget. We offer a range of service plans so that you can choose the level of coverage desired.



Compliance services

Agilent offers a comprehensive set of laboratory compliance services, including instrument qualification based on USP <1058>, analytical instrument qualification, and custom validation services.



Virtual tech support

CrossLab service plans enable customers to get live technical help. Our Virtual Assist application uses a secure connection and supports digital annotations, enabling clear instructions for remote problem solving to reduce your downtime.



Agilent learning services

Having productivity challenges? Agilent can help you optimize your method, train new staff, and bolster troubleshooting abilities with method consulting and education services.

The Agilent Service Guarantee

If we cannot fix an instrument covered by a CrossLab service plan, regardless of manufacturer, our escalation process will resolve the issue up to and including replacing your instrument for free.*

* Conditions apply.



Unlock your lab's full potential with CrossLab
[agilent.com/chem/crosslab](https://www.agilent.com/chem/crosslab)

Agilent Financial Solutions

Acquire the equipment you need today, so your business can grow into tomorrow

Whether you're a small start-up or a Fortune 100 company, Agilent Financial Solutions helps you acquire the latest innovations through flexible installment plans, all without a large down payment. Our team will work with you to design a customized plan that conserves your cash and gives your lab a technological edge.

To learn more, consult with your Agilent Financial Solutions specialist or reach us at **www.agilent.com/chem/agilent-financial-solutions**.

Learn more:

www.agilent.com/lcms/pro-iq-series

Buy online:

www.agilent.com/chem/store

Get answers to your technical questions and access resources in the Agilent Community:

community.agilent.com

U.S. and Canada

1-800-227-9770

agilent_inquiries@agilent.com

Europe

info_agilent@agilent.com

Asia Pacific

inquiry_lsca@agilent.com

DE-006157

This information is subject to change without notice.

© Agilent Technologies, Inc. 2025
Published in the USA, May 27, 2025
5994-8330EN

