

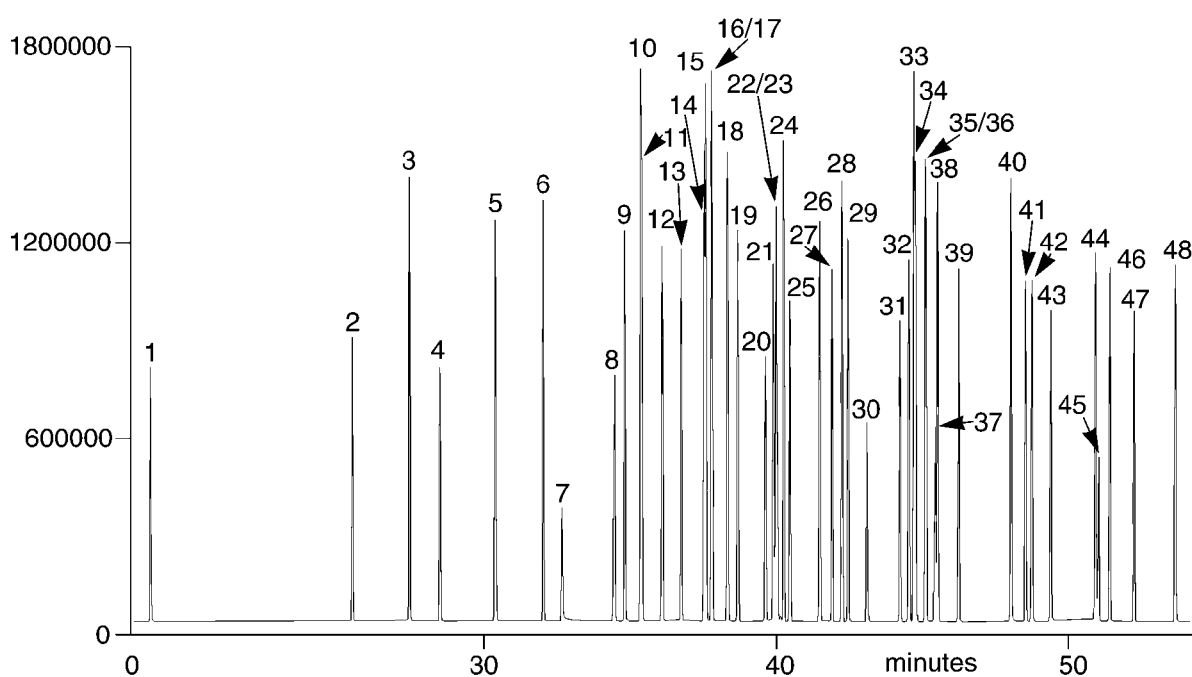
## Analysis of chlorine, phosphorus and nitrogen based pesticides

**BPX5**

Column part number	054101		
Phase	BPX5	Detector	MS
Column	30 m x 0.25 mm x 0.25 $\mu$ m	Injection mode	Splitless, 0.5 min
Initial temperature	50°C, 1 min	Carrier gas	He, 33 cm/sec
Rate	4°C/min	Injection volume	0.5 $\mu$ L
Final temperature	280°C, 1.5 min		

**Components**

1. DDVP	13. IBP	25. Thiobancarb	37. Tricyclazole
2. Etridiazole	14. ECP	26. Fthalide	38. Buprofezine
3. Chloroneb	15. MBPMC	27. Pendimetaline	39. Isoxathion
4. Molinate	16. Bromobutide	28. Isofenfos	40. Mepron:1
5. BPMC	17. MEP-ox	29. Methyl-Dymron	41. Chloronitrofen
6. Benfluralin	18. Tolclophos-Methyl	30. Captan	42. EDDP
7. Pencycurone	19. Simetryn	31. Butamifos	43. EPN-ox
8. Simazin	20. MEP	32. Napropamide	44. Pyridaphenthion
9. Diazinon-ox	21. Esprocarb	33. Flutolurin	45. Iprodione
10. Propyzamide	22. Malathion	34. Prethirachlor	46. EPN
11. Diazinon	23. Probenazole	35. Isoxathon-ox	47. Bifenox
12. TPN	24. Chloropyrifos	36. Isoprothiolate	48. Mefenacet


 For more information visit [www.trajanscimed.com](http://www.trajanscimed.com) or contact [techsupport@trajanscimed.com](mailto:techsupport@trajanscimed.com)