

Reproducibility of the 7400 Auto-Sampler for BTEX in Water

The CDS Purge & Trap Autosampling system includes a Model 7000 Purge & Trap with a Model 7400 Auto-sampler capable of analyzing water and soil samples. In the soil mode, water and internal standard are added to the sample vessel which is then stirred and purged in a temperature controlled zone to the trap of the 7000. In the water mode, samples are transferred to the purging vessel of the 7000, an internal standard solution added, and the sample is then purged to the trap of the 7000. After analysis, the water is drained, the vessel rinsed and automatic blank runs may be added before analysis of the next sample.

Figure 1 shows a simple analysis of BTEX compounds at the 50 PPB level in water. Five ml samples of water were transferred from the auto-sampler vials to the 7000 and then purged at 35 ml/min with helium for 11 minutes. To evaluate reproducibility, multiple samples of the same concentration were analyzed in the same way, rinsing the vial and baking the trap between runs, but without blank runs between the samples.

Figure 2 shows the peaks for benzene and the internal standard overlaid for several consecutive runs. Peak area ratios were calculated for each of the analytes using the internal standard. For a total of eight analyses, the RSD for benzene was 1.2%, for toluene, 2.1%, for ethylbenzene, 2.6% and for xylene, 1.1%. The average RSD for the four compounds was 1.8%

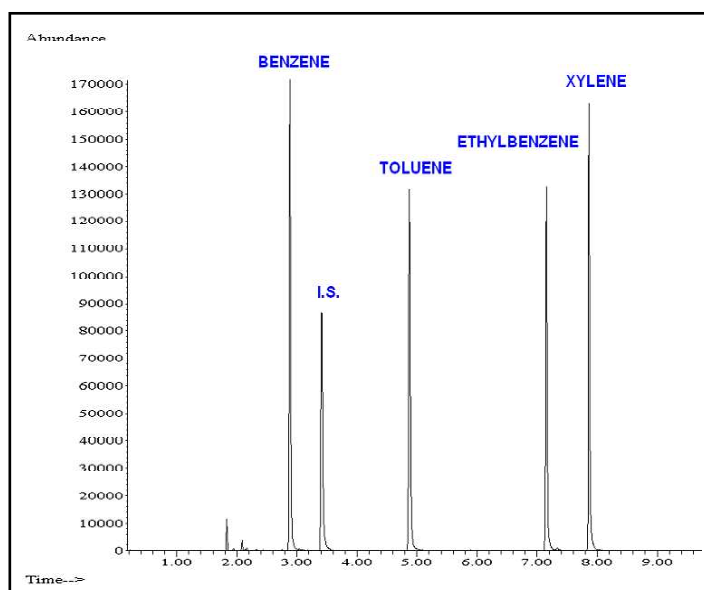


Figure 1. BTEX in water, 50 PPB each.

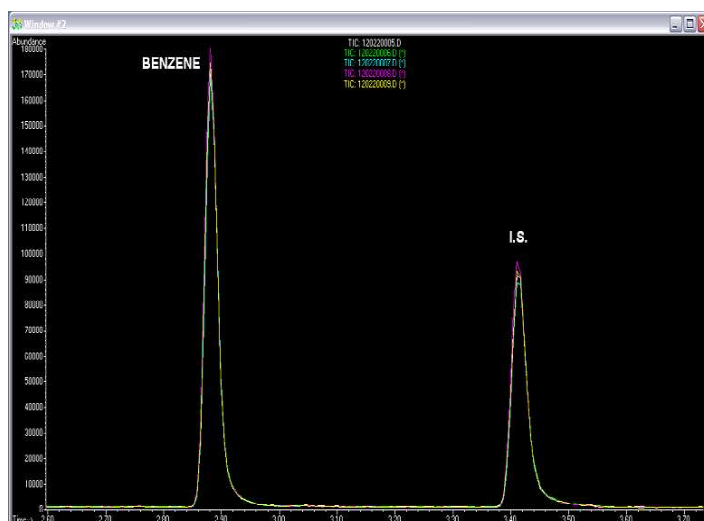


Figure 2. Five runs of benzene and the internal standard, overlaid.

Experimental Conditions

7000 P&T

Valve oven:	130°C
Transfer line:	130°C
Purge time:	11 minutes
Purge flow:	35 ml/min
Trap dry	35°C for 1 minute
Desorb preheat:	245°C for 0.6 minutes
Trap desorb:	250°C for 2 minutes
Trap bake:	260°C for 10 minutes

Gas Chromatograph

Injection port:	300°C
Split ratio:	20:1
Column:	30 m x 0.25 mm 5% phenyl methylsilicone

Oven program

Initial:	40°C for 4 minutes
Ramp:	10°C/minute
Final:	210°C for 1 minute

Mass Spectrometer

Mass range:	35 to 550
Source:	230°C

FOR MORE INFORMATION
CONCERNING THIS APPLICATION,
WE RECOMMEND THE
FOLLOWING READING:

T. A. Bellar and J. J. Lichtenberg, J.
Am. Waterworks Assn., 66 (12) 739.

© courtesy of CDS Analytical Inc.

Headquarters

JSB International
Tramstraat 15
5611 CM Eindhoven
T +31 (0) 40 251 47 53
F +31 (0) 40 251 47 58

Zoex Europe
Tramstraat 15
5611 CM Eindhoven
T +31 (0) 40 257 39 72
F +31 (0) 40 251 47 58

Sales and Service

Netherlands
Apolloweg 2B
8239 DA Lelystad
T +31 (0) 320 87 00 18
F +31 (0) 320 87 00 19

Belgium
Grensstraat 7
Box 3 1831 Diegem
T +32 (0) 2 721 92 11
F +32 (0) 2 720 76 22

Germany
Max-Planck-Strasse 4
D-47475 Kamp-Lintfort
T +49 (0) 28 42 9280 799
F +49 (0) 28 42 9732 638

UK & Ireland
Cedar Court,
Grove Park Business Est.
White Waltham, Maidenhead
Berks, SL6 3LW
T +44 (0) 16 288 220 48
F +44 (0) 70 394 006 78

info@go-jsb.com
www.go-jsb.com

