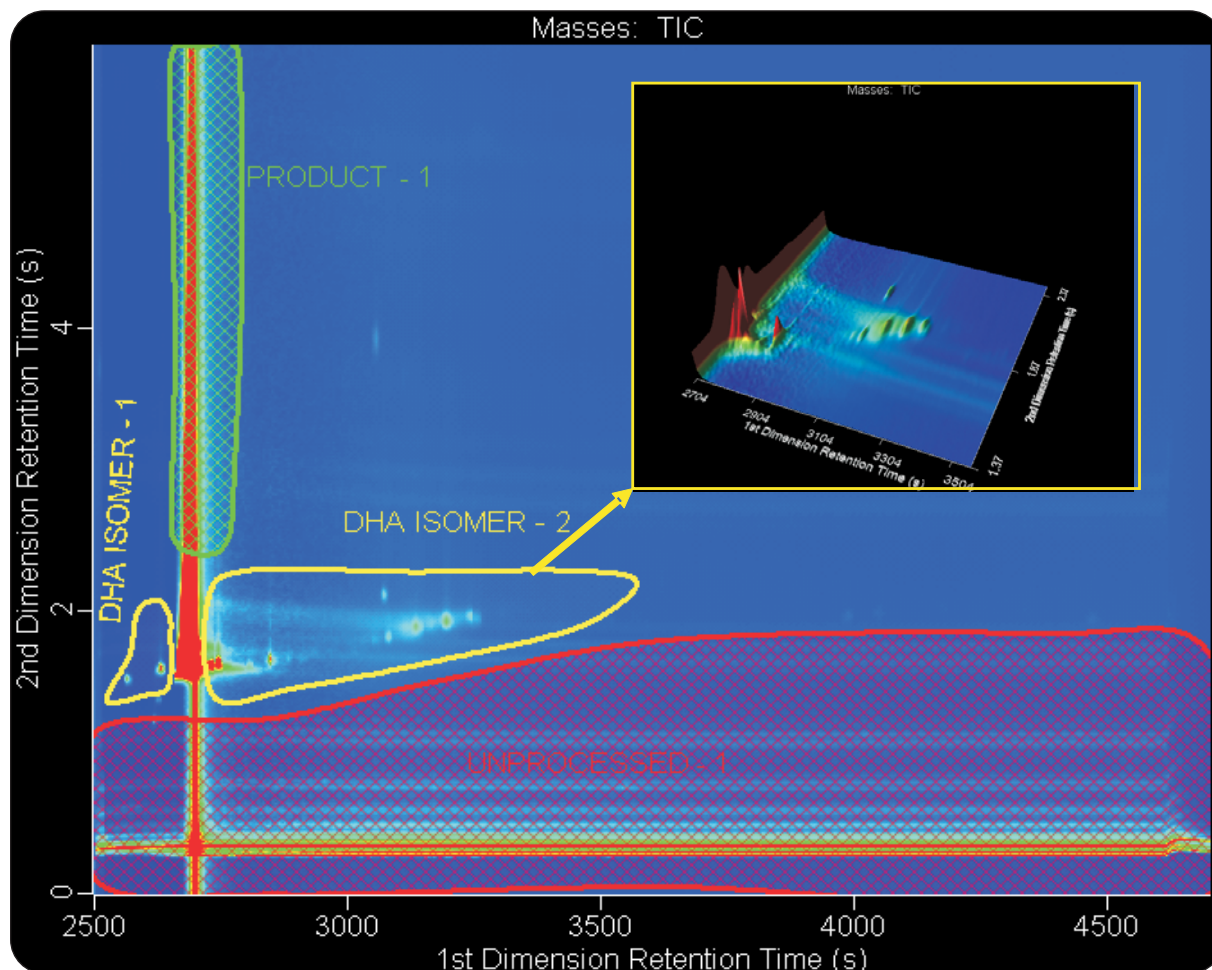


GCxGC-TOFMS of Decaheptaenoic Acid (DHA) Ethyl Ester Isomers with Classifications

Life Science and Chemical Analysis Centre
LECO Corporation, Saint Joseph, Michigan USA



GCxGC-TOFMS analysis of DHA Ethyl Esters showing separation of at least 10 Isomers. The inset shows a zoomed-in 3 dimensional chromatogram of the DHA Isomer 2 region.

Columns:

30 m x 0.25 mm x 0.25 μ m FAMEWAX
1.0 m x 0.18 mm x 0.18 μ m DB-1

TOFMS:

40 to 550 m/z @ 200 spectra/s

For questions on this analysis
e-mail us at: life_science@leco.com

For a complete listing of snapshots
and application notes visit us on the
web at www.leco.com

