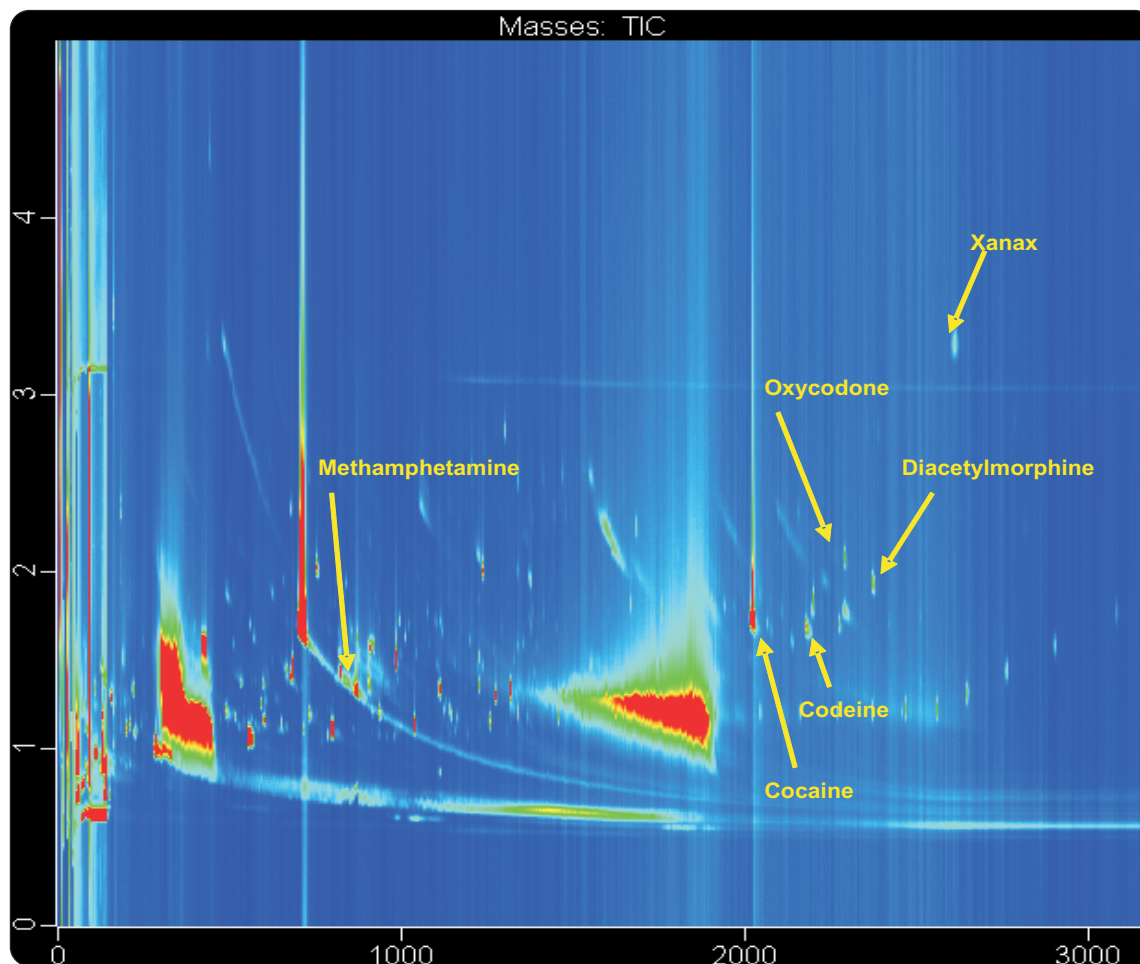


# SPME-GCxGC-TOFMS Non-Derivatized Sample Analysis for Drugs in Urine

Life Science and Chemical Analysis Centre  
LECO Corporation, Saint Joseph, Michigan USA



**SPME-GCxGC-TOFMS non-derivatized sample analysis of urine with positive identification of methamphetamine, cocaine, codeine, diacetylmorphine, oxycodone, and xanax.**

#### Columns:

30 m x 0.25 mm x 0.25  $\mu$ m Rtx-5ms  
1.5 m x 0.18 mm x 0.18  $\mu$ m Rtx-200

#### TOFMS:

40 to 650 m/z @ 200 spectra/s

For questions on this analysis  
e-mail us at: [life\\_science@leco.com](mailto:life_science@leco.com)

For a complete listing of snapshots  
and application notes visit us on the  
web at [www.leco.com](http://www.leco.com)



Application Snapshot

LECO