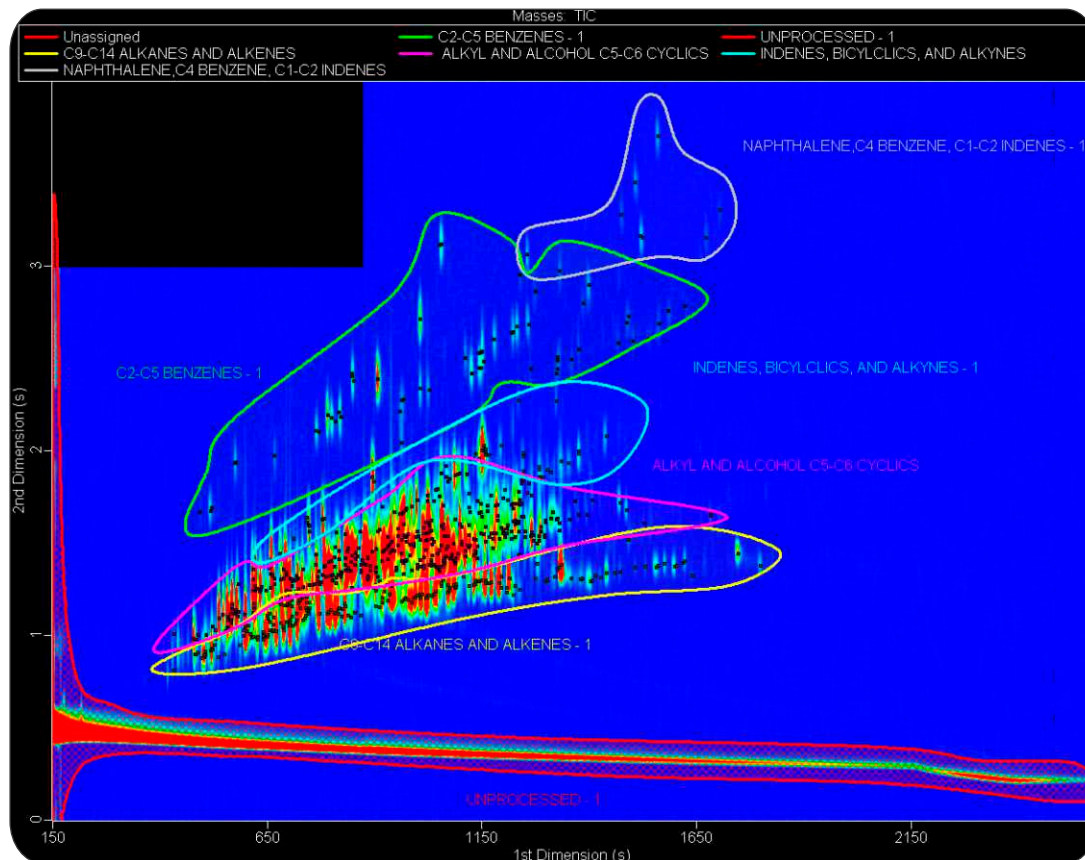


Analysis of Kerosene by GCxGC-TOFMS with Variable Modulation & Classifications

Life Science and Chemical Analysis Centre
LECO Corporation, Saint Joseph, Michigan USA



A highly structured GCxGC-TOFMS Contour Plot showing analysis of Kerosene. This analysis uses variable modulation and classifications to facilitate the characterization of this complex petroleum-based sample.

Columns:

30 m x 0.25 mm x 0.25 μm , Rxi-5Sil MS
1.1 m x 0.15 mm x 0.15 μm , Rxi-17Sil MS

TOFMS:

35 to 600 m/z @ 200 spectra/s

For questions on this analysis
e-mail us at: life_science@leco.com

For a complete listing of snapshots
and application notes visit us on the
web at www.leco.com



Application Snapshot

LECO