

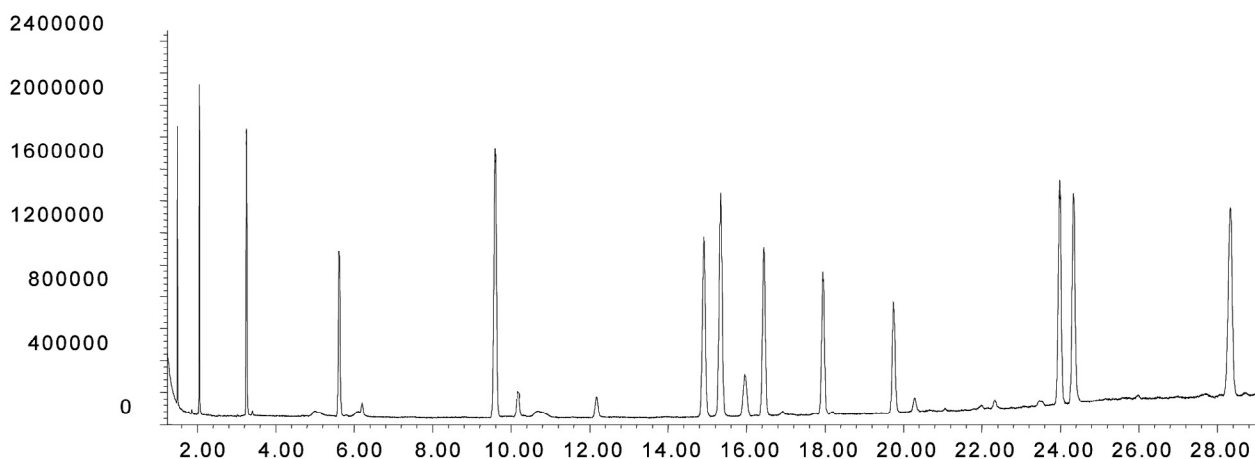
## Analysis of FAME standards

SolGel-WAX™

Column part number	054796		
Phase	SolGel-WAX™	Carrier gas	He, 35.3 psi
Column	30 m x 0.25 mm x 0.25 µm	Carrier gas flow	1.6 mL/min
Sample	300 ppm in dichloromethane	Constant flow	On
Initial temperature	155°C	Average linear velocity	35 cm/sec at 155°C
Rate 1	2°C/min to 180°C	Injection mode	Split (80:1), 250°C
Rate 2	4°C/min to 220°C	Injection volume	0.2 µL
Final temperature	220°C, 5 min	Liner type	4 mm ID double taper
Detector	MS	Full scan / SIM	Full scan 45-450

### Components

- |                             |                                  |                               |                                |
|-----------------------------|----------------------------------|-------------------------------|--------------------------------|
| 1. Methyl octanoate (C8:0)  | 5. Methyl palmitate (C16:0)      | 9. Methyl oleate (C18:1)      | 13. Methyl behenate (C22:0)    |
| 2. Methyl decanoate (C10:0) | 6. Methyl palmitoleate (C16:1)   | 10. Methyl linoleate (C18:2)  | 14. Methyl erucate (C22:1)     |
| 3. Methyl laurate (C12:0)   | 7. Methyl heptadecanoate (C17:0) | 11. Methyl linolenate (C18:3) | 15. Methyl lignocerate (C24:0) |
| 4. Methyl myristate (C14:0) | 8. Methyl stearate (C18:0)       | 12. Methyl arachidate (C20:0) |                                |



For more information visit [www.trajanscimed.com](http://www.trajanscimed.com) or contact [techsupport@trajanscimed.com](mailto:techsupport@trajanscimed.com)