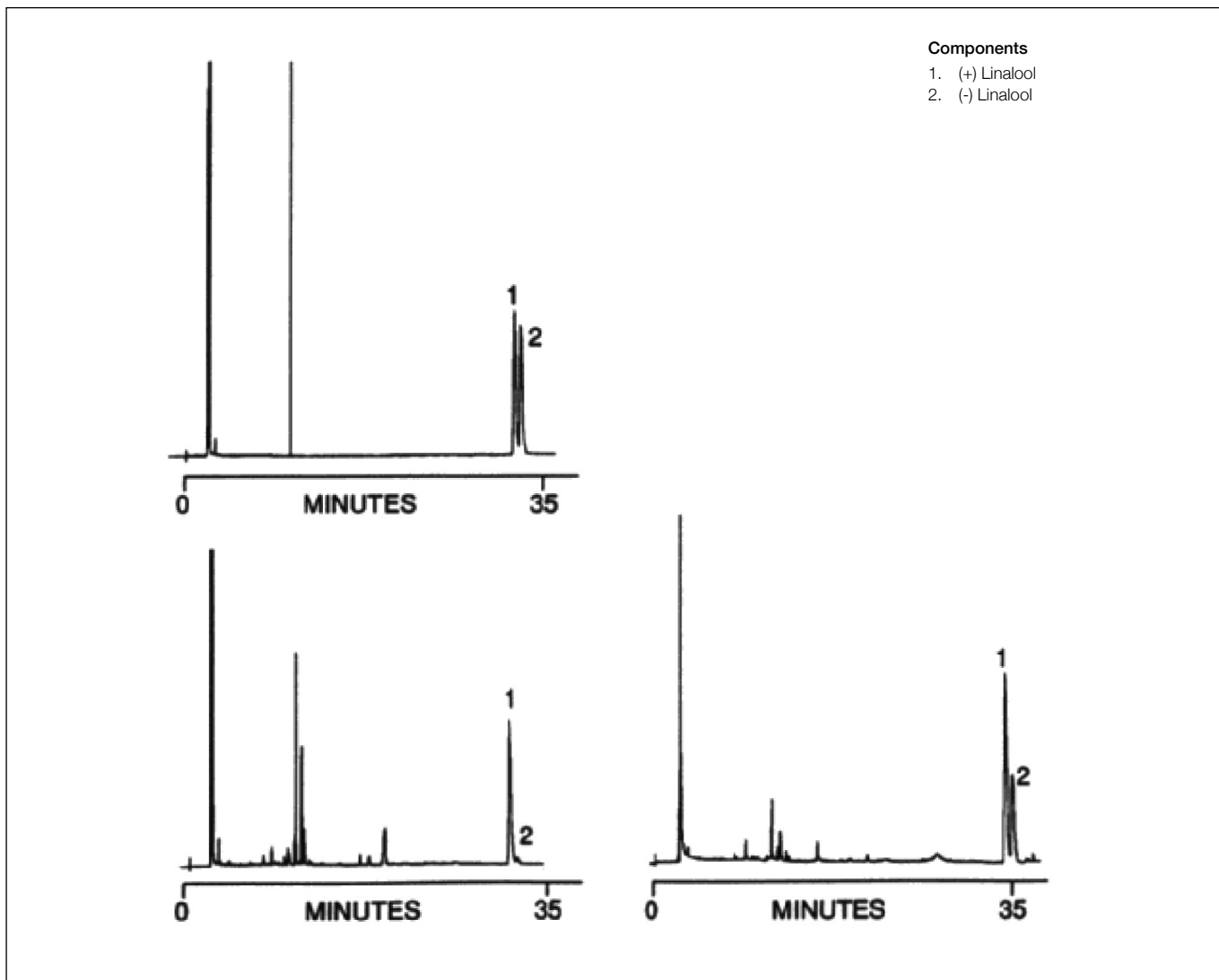


Analysis of lavender oil

CYDEX-B™

Column part number	054901		
Phase	CYDEX-B™	Detector	FID
Column	50 m x 0.22 mm x 0.25 µm	Injection mode	Split
Initial temperature	Isothermal at 90°C		



For more information visit www.trajanscimed.com or contact techsupport@trajanscimed.com