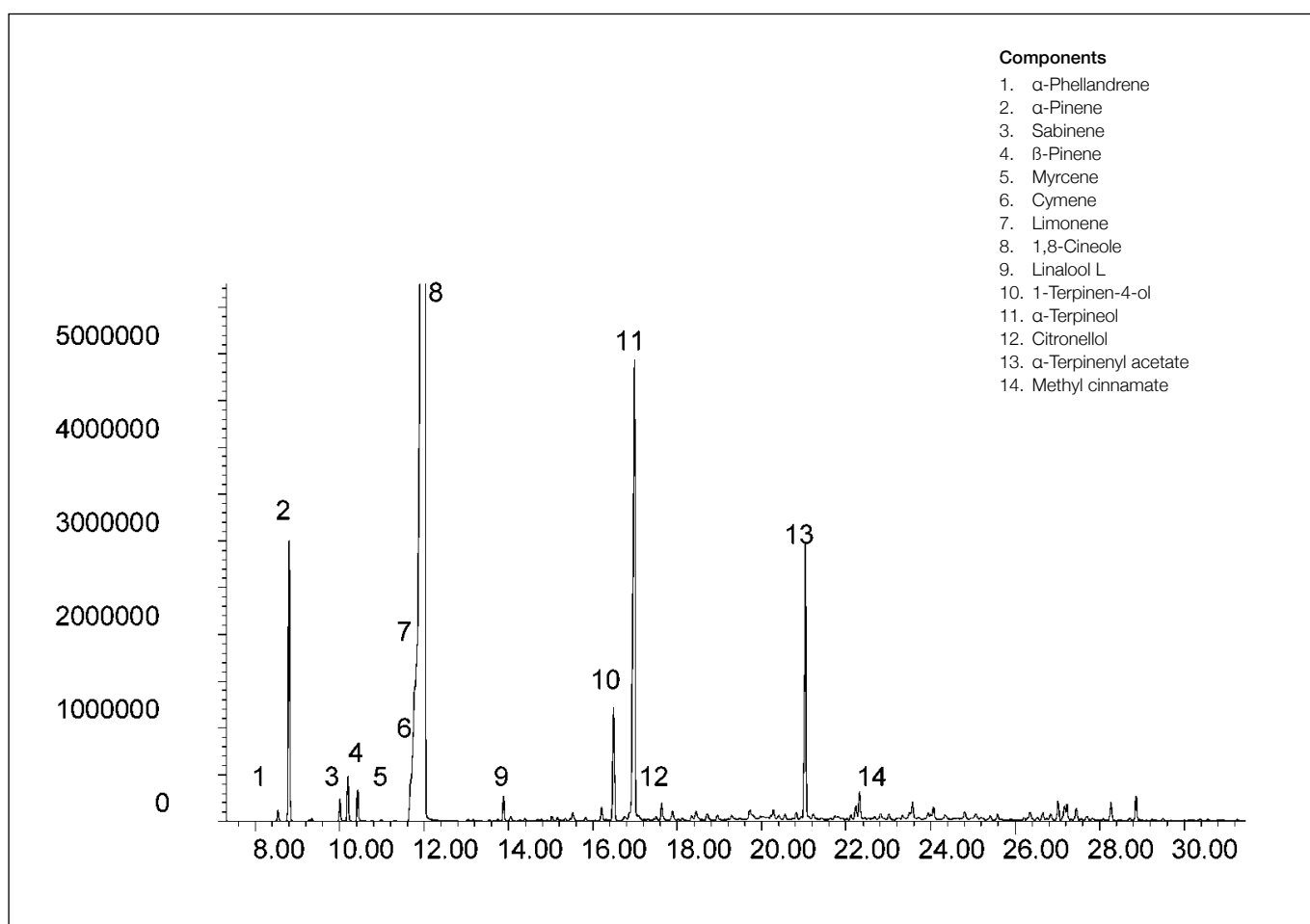


Analysis of eucalyptus oil

BPX5

Column part number	054101		
Phase	BPX5	Carrier gas flow	1.0 mL/min
Column	30 m x 0.25 mm x 0.25 µm	Constant flow	On
Initial temperature	40°C, 1 min	Average linear velocity	36 cm/sec at 40°C
Rate	5°C/min to 200°C	Injection mode	Split (200:1), 250°C
Final temperature	260°C	Purge on (split) vent flow	200 mL/min
Detector	MS	Injection volume	0.2 µL
Carrier gas	He, 7.0 psi	Liner type	4 mm ID double taper


 For more information visit www.trajanscimed.com or contact techsupport@trajanscimed.com