

GC CAPILLARY COLUMN APPLICATIONS: ENVIRONMENTAL

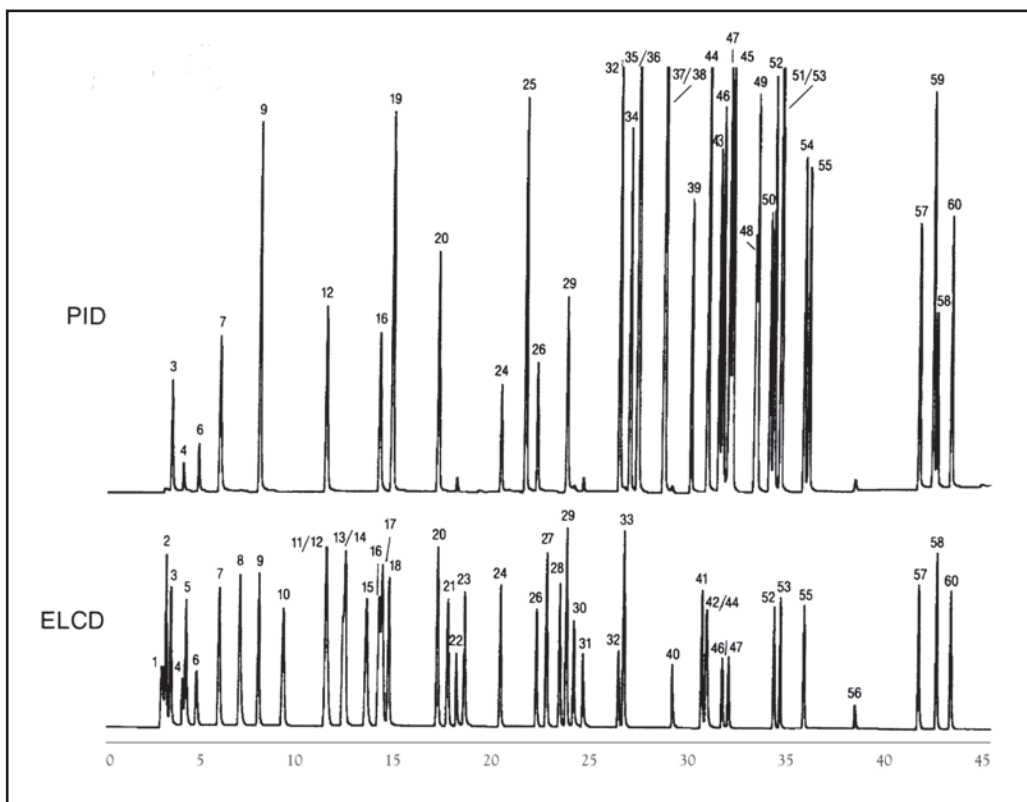
EPA Method 502.2 Drinking Water

COLUMN: 007-502, Cyanopropyl Phenyl Methylpolysiloxane
75M. x 0.53mm I.D. x 2.5µm film
Cat. No.: 007-502-75V-2.5F
Temperature: 35° (10 min. hold) (4°/min.) - 280°C (5 min. hold)
Carrier Gas: 10 ml/min., Helium
Purge: 11 min.
Trap Sampling: Tenax/Silica/Charcoal Trap

1. dichlorofluoromethane
2. chloromethane
3. vinyl chloride
4. bromomethane
5. chloroethane
6. trichlorofluoromethane
7. 1,1-dichloroethylene
8. methylene chloride
9. trans 1,2-dichloroethylene
10. 1,1-dichloroethane
11. 2,2-dichloropropane
12. cis 1,2-dichloroethylene
13. bromochloromethane
14. chloroform
15. 1,1,1-trichloroethane
16. 1,1-dichloropropane
17. carbon tetrachloride
18. 1,2-dichloroethane
19. benzene
20. trichloroethylene
21. 1,2-dichloropropane
22. dibromomethane
23. bromodichloromethane
24. cis-1,3-dichloropropene
25. toluene
26. trans 1,3-dichloropropene
27. 1,1,2-trichloroethane
28. 1,3-dichloropropane
29. tetrachloroethylene
30. dibromochloromethane
31. ethylene dibromide
32. chlorobenzene
33. 1,1,1,2-tetrachloroethane
34. ethylbenzene
35. m-xylene
36. p-xylene
37. styrene
38. o-xylene
39. isopropylbenzene

40. bromoform
41. 1,1,2,2-tetrachloroethane
42. 1,2,3-trichloropropane
43. bromobenzene
44. propylbenzene
45. 2-chlorotoluene
46. 4-chlorotoluene
47. 1,3,5-trimethylbenzene
48. tert-butylbenzene
49. 1,2,4-trimethylbenzene
50. sec-butylbenzene
51. p-isopropyltoluene
52. 1,3-dichlorobenzene
53. 1,4-dichlorobenzene
54. butylbenzene

55. 1,2-dichlorobenzene
56. 1,2-dibromo-3-chloropropane
57. 1,2,4-trichlorobenzene
58. naphthalene
59. hexachlorobutadiene
60. 1,2,3-trichlorobenzene



PO Box 3881, Woodbridge, CT 06525 • (203) 393-3112 • FAX (203) 393-0391
TOLLFREE: 800-275-7033 • E-MAIL: tech@quadrexcorp.com