

GC CAPILLARY COLUMN APPLICATIONS: FAMES

PUFA 2 Animal Source

COLUMN: BTR-CW,
Carbowax/BTR -
Oxygen Resistant
30M. x 0.25mm I.D. x
0.25µm film

Cat. No.: BTR-CW-30-0.25F

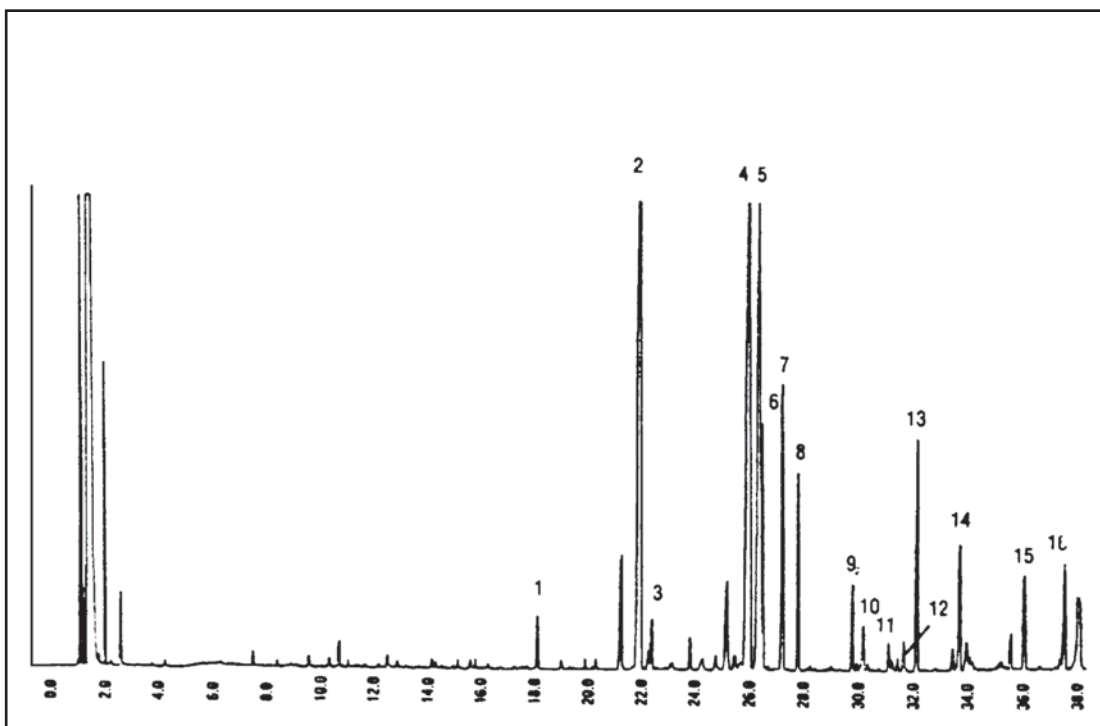
Temperature: 60° (5 min. hold)
(10°/min.) - 150° -
(4°/min) - 240°C

Injector: 230°C

Detector: 250°C, FID

Carrier Gas: 40 cm/sec., Helium

1. C-14:0
2. C-16:0
3. C-16:1 w7
4. C-18:0
5. C-18:1 w9
6. C-18:1 w7
7. C-18:2 w6
8. C-18:3 w6
9. C-20:1 w11
10. C-20:1 w9
11. C-20:2 w6
12. C-20:3 w6
11. C-20:4 w6
12. C-20:5 w3
13. C-22:4 w6
14. C-22:5 w3
15. C-22:6 w3



PO Box 3881, Woodbridge, CT 06525 • (203) 393-3112 • FAX (203) 393-0391
TOLLFREE: 800-275-7033 • E-MAIL: tech@quadrexcorp.com