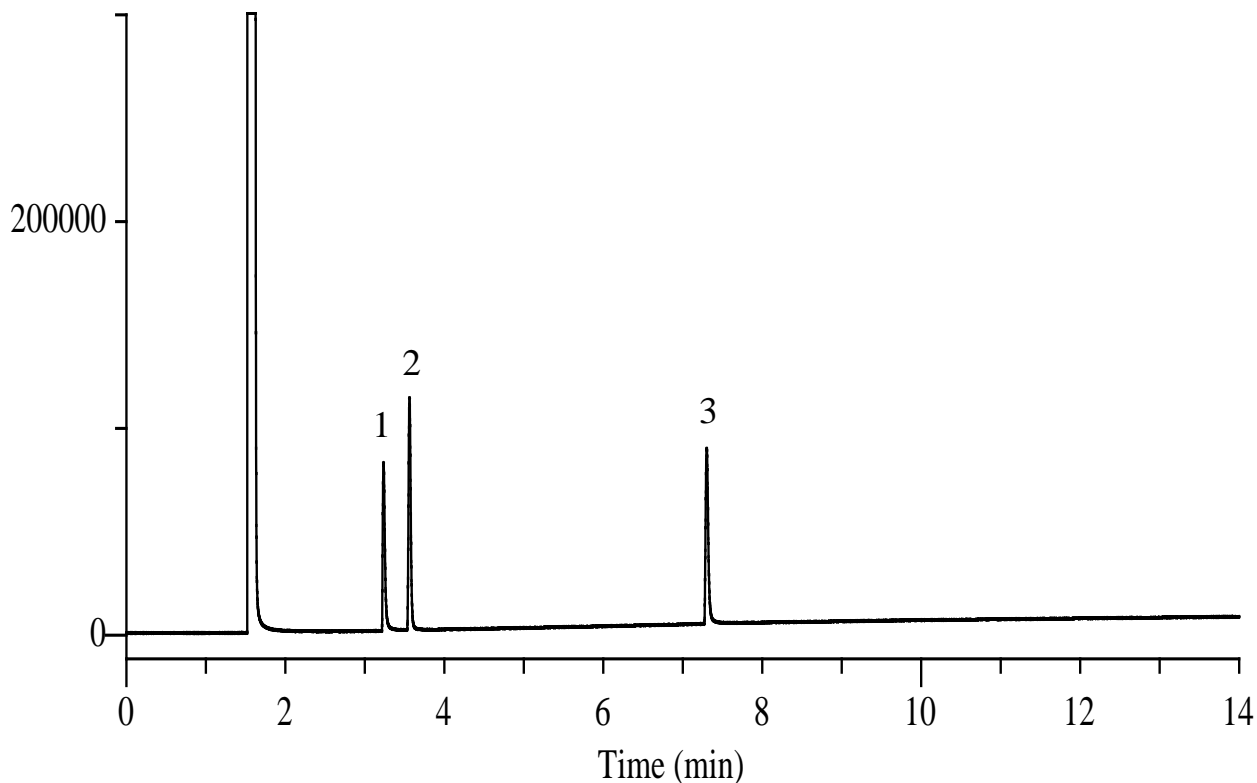


InertSearch™ for GC

InertCap® Applications

Propylene glycol, Diethylene glycol, Ethylene glycol

Data No. GA210-0644



Conditions

System : GC/FID
Column : InertCap 1701
0.32 mm I.D. x 30 m df = 1.00 µm
Col. Cat. No. : 1010-61245
Col. Temp. : 100 °C - 7.5 °C/min - 220 °C
Carrier Gas : He 80 kPa
Injection : Split flow 40 mL/min
220 °C
Detection : FID Range 10⁰
250 °C
Sample Size : 500 µg/mL in Methanol
1.0 µL

Analyte :

1. Ethylene glycol
2. Propylene glycol
3. Diethylene glycol