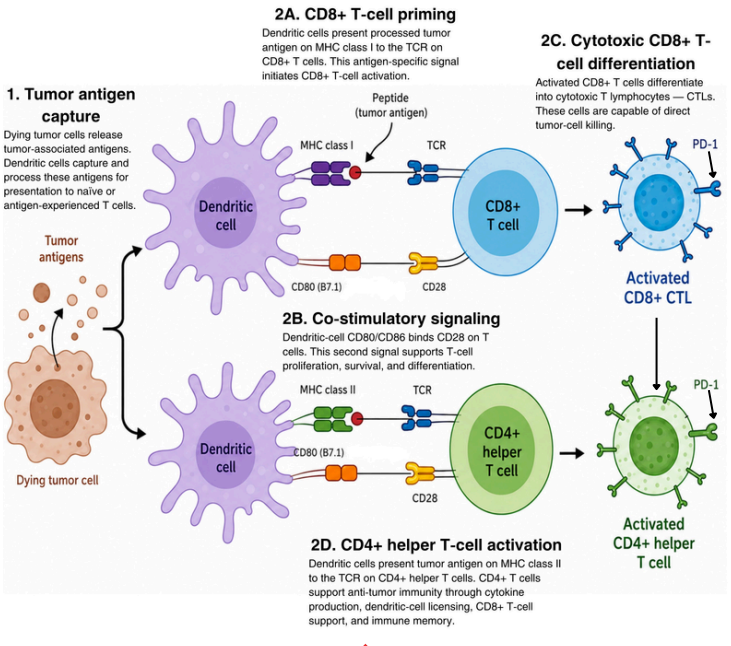
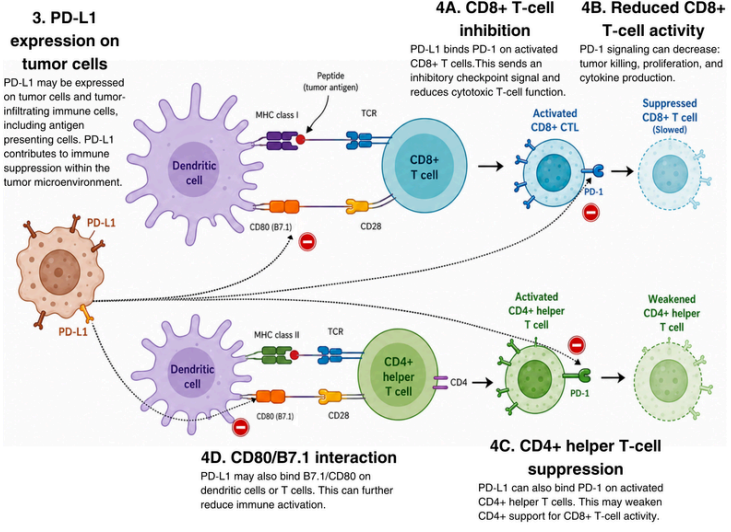


Avelumab Mechanism of Action: PD-L1 Blockade and Restoration of Anti-tumor T-cell Activity

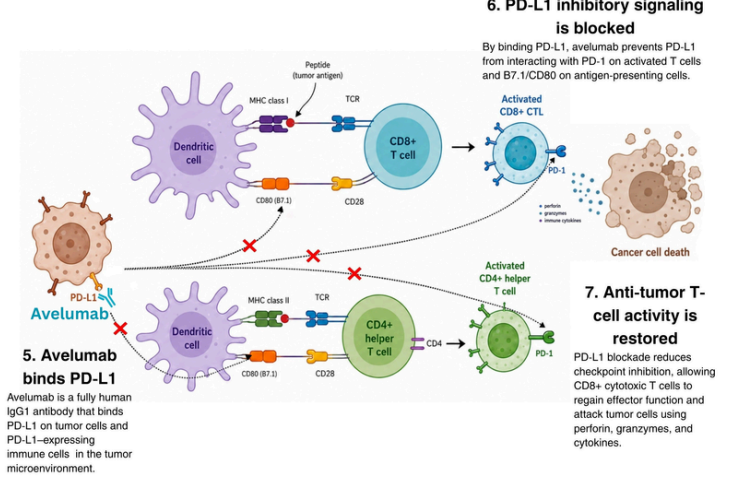
Dendritic Cell Priming of Anti-tumor T-cell Responses



PD-L1-Mediated Suppression of Anti-tumor T-cell Responses



Avelumab Mechanism of Action



LEGEND

- PD-L1
Checkpoint ligand on tumor cells or immune cells
- Dotted line
PD-L1-mediated inhibitory signaling
- Inhibitory checkpoint signal
Inhibitory checkpoint signal
- Red X
Blocked PD-L1 interaction
- Avelumab
Anti-PD-L1 monoclonal antibody (IgG1)
- Perforin / granzymes / cytokines
Effector molecules involved in tumor-cell killing