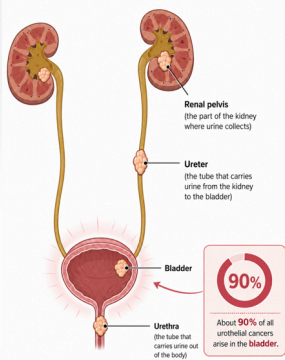


## WHAT IS UROTHELIAL CANCER?

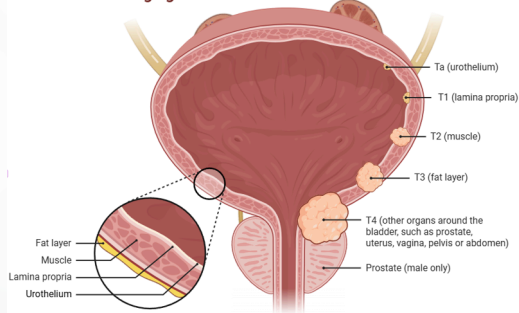


Urothelial cancer usually starts in the lining of the bladder or other parts of the urinary tract. When it becomes advanced, it may grow deeper into nearby tissues or spread to other parts of the body.

## HOW CAN IT PROGRESS?

Some urothelial cancers stay in one area. Others grow into the muscle layer of the bladder or spread to other organs. When cancer has spread or cannot be removed completely with surgery, it is called locally advanced or metastatic disease.

Bladder Cancer Staging



*Metastatic means the cancer has spread to another part of the body.*

## WHAT ARE BIOMARKERS?

Biomarkers are clues from the cancer or the body. They may help researchers understand why some patients respond to treatment and others do not.

PD-L1: a protein that may help cancer hide from the immune system

CD8+ T cells: immune cells that can attack cancer.

Blood and tumor markers: research clues about response or resistance

## WHY DOES THIS CLINICAL TRIAL MATTER?

This study asks:

After chemotherapy has helped or kept the cancer stable, can maintenance immunotherapy help patients stay well longer?



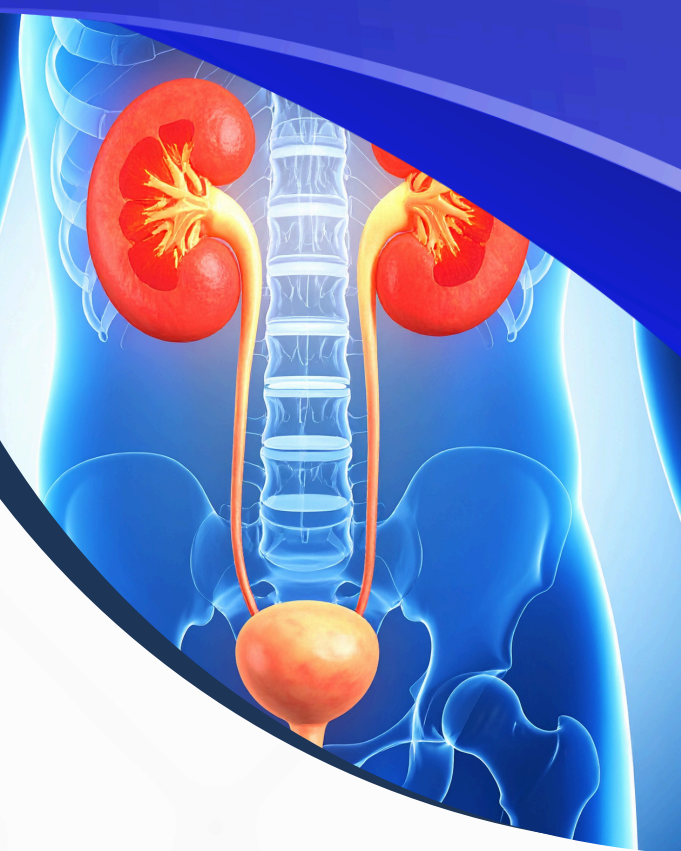
The study may help researchers understand whether avelumab can:

- Delay cancer growth
- Help patients live longer
- Identify biomarkers linked to response
- Affect symptoms and quality of life
- Cause side effects

PATIENT EDUCATION BROCHURE

## UNDERSTANDING ADVANCED UROTHELIAL CANCER AND THIS MAINTENANCE STUDY

*A simple guide to help you understand the disease, current treatment approach, and why this clinical trial may matter.*



## WHAT SYMPTOMS CAN PATIENTS EXPERIENCE?

- 1 Blood in the urine
- 2 Pain or burning when urinating
- 3 Needing to urinate often or urgently
- 4 Pain in the back, pelvis, or lower belly
- 5 Tiredness, weakness, or weight loss

Symptoms can be different for each person. Your study doctor can explain which symptoms are related to your cancer, prior treatment, or another cause.

Who is this study designed for?

This study may be relevant for patients whose advanced urothelial cancer did not get worse after first treatment with platinum chemotherapy.

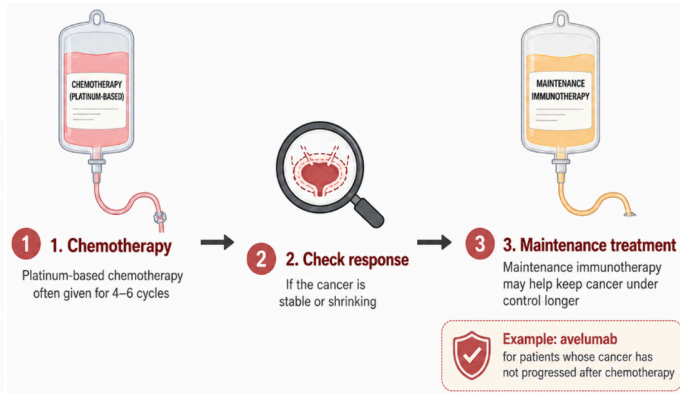


## WHAT IS THE USUAL TREATMENT APPROACH?

Many patients with advanced urothelial cancer first receive chemotherapy that contains platinum. Common examples include:

Gemcitabine + cisplatin  
Gemcitabine + carboplatin

These treatments may shrink or control the cancer for some time. However, that long-lasting complete responses after first-line chemotherapy are uncommon, and many patients eventually have disease progression.



## WHY MORE OPTIONS ARE NEEDED?

After chemotherapy works or keeps the cancer stable, there is still a risk that the cancer may start growing again. Doctors are studying whether a treatment given after chemotherapy, called maintenance treatment, may help keep the cancer controlled for longer.

## WHAT IS MAINTENANCE TREATMENT?

Maintenance treatment is not the same as starting over. It is a treatment given after chemotherapy when the cancer has not gotten worse. The goal is to help maintain the benefit from chemotherapy and delay the cancer from growing again.

In this study, the treatment being studied is avelumab plus best supportive care compared with best supportive care alone.

## WHAT IS AVELUMAB?

Avelumab is designed to help the immune system recognize and attack cancer cells. Some cancer cells use PD-L1 as a “brake” to hide from the immune system. Avelumab blocks that signal, which may help immune cells respond to the cancer.

