





FLAM
KEEP

Ford

Ford









EL MANNING'S
9 CAMARO

DALE JR'S
1973 CAMARO

STUART ADAMS'
1969 CAMARO

PAUL ALDEN
1968 CAMARO

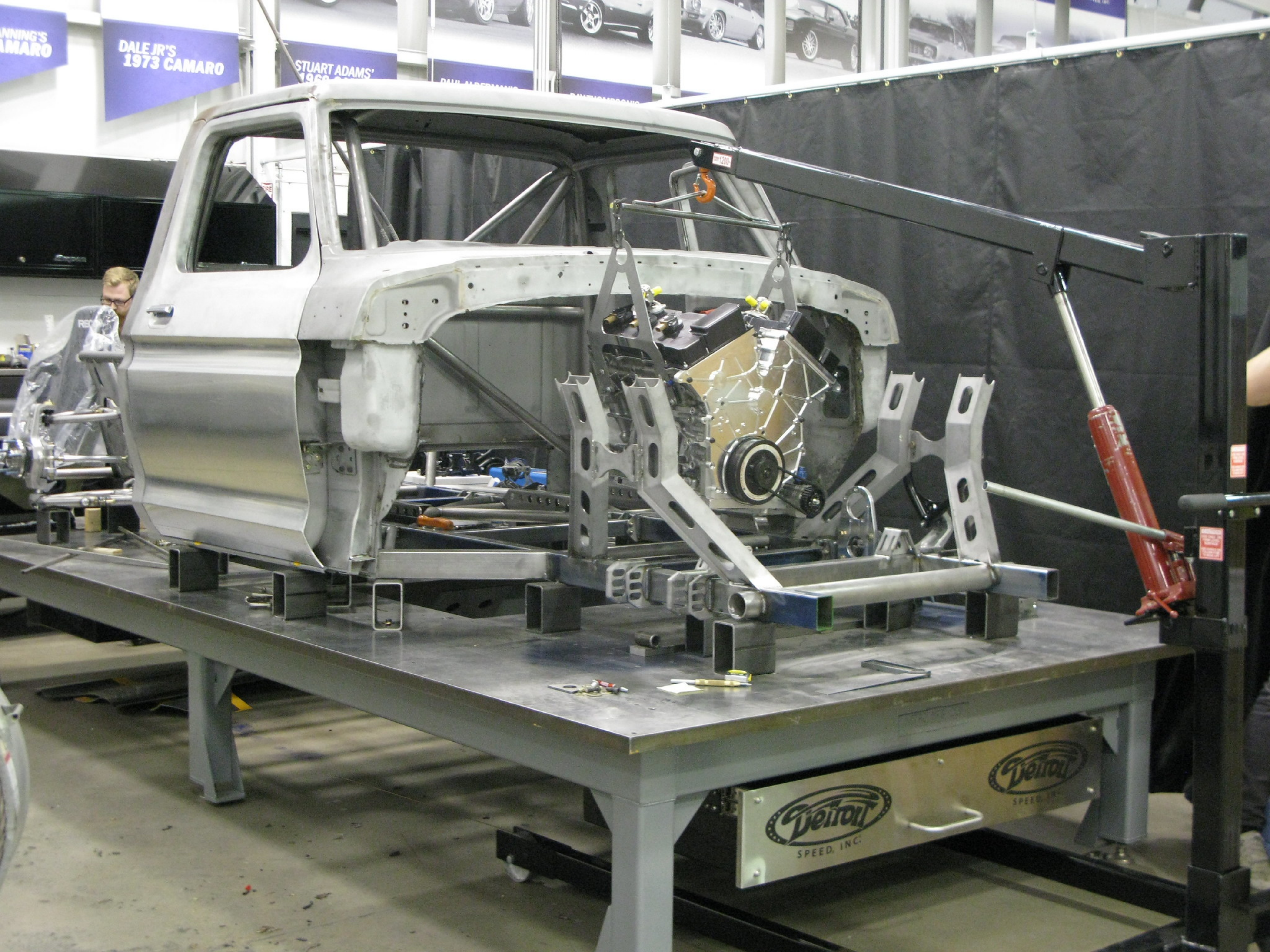
1968 CAMARO

EXIT

DOOR TO REMAIN UNLOCKED
DURING BUSINESS HOURS

braille
products

DETON SPEED, INC.



WINNING'S
CAMARO

DALE JR'S
1973 CAMARO

STUART ADAMS'
1968

PAUL ALPERMAN'S

DANIEL HARRIS'

Detroit
SPEED, INC.

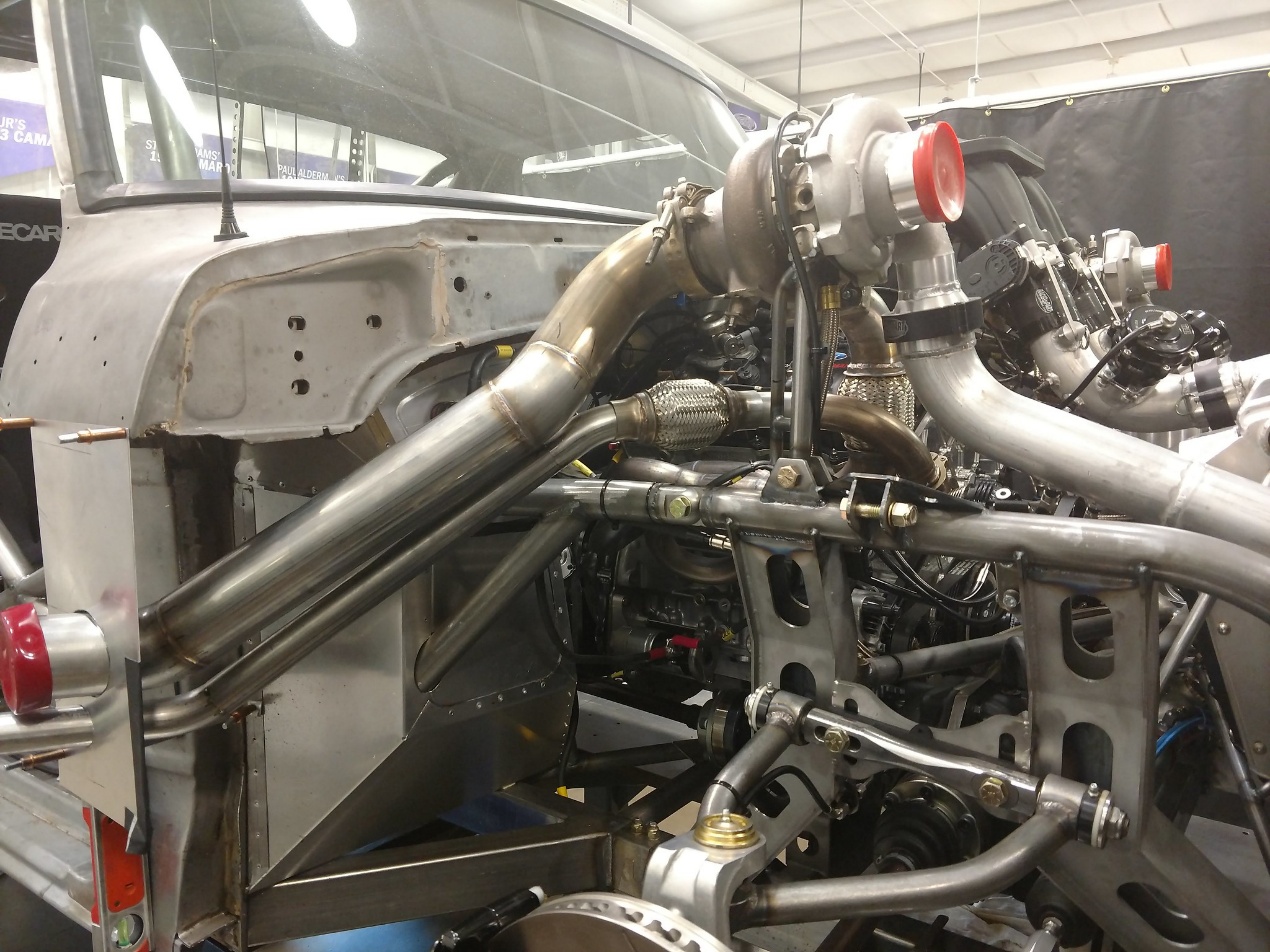
Detroit
SPEED, INC.



DALE JR'S
1973 CAMARO

1969 CAMARO

SPEED, INC.



SPEED & ENGINEERING
DSE

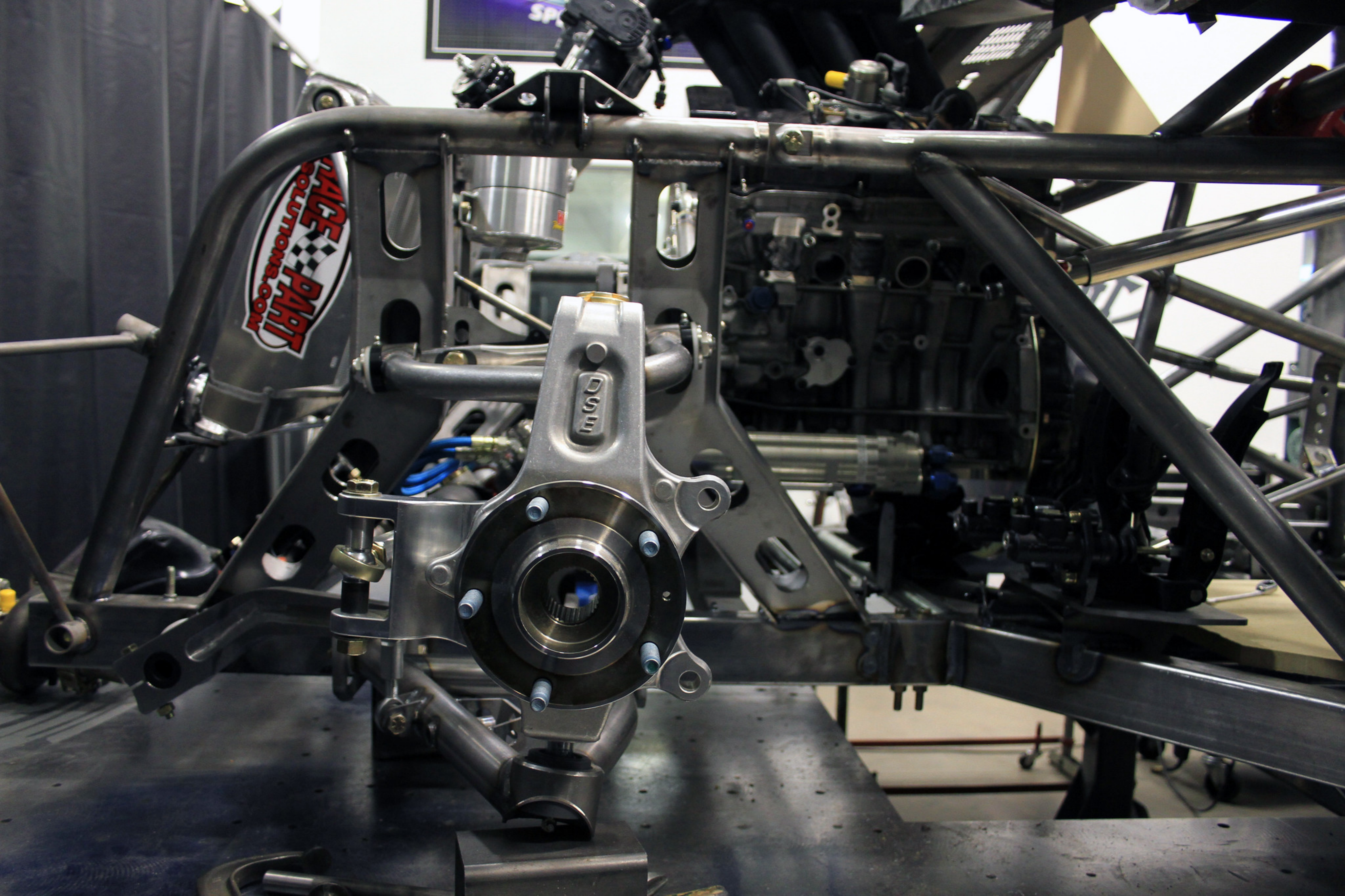


RECARO

wilwood

wilwood
DISC BRAKES





RACE PART SOLUTIONS.COM

DSW



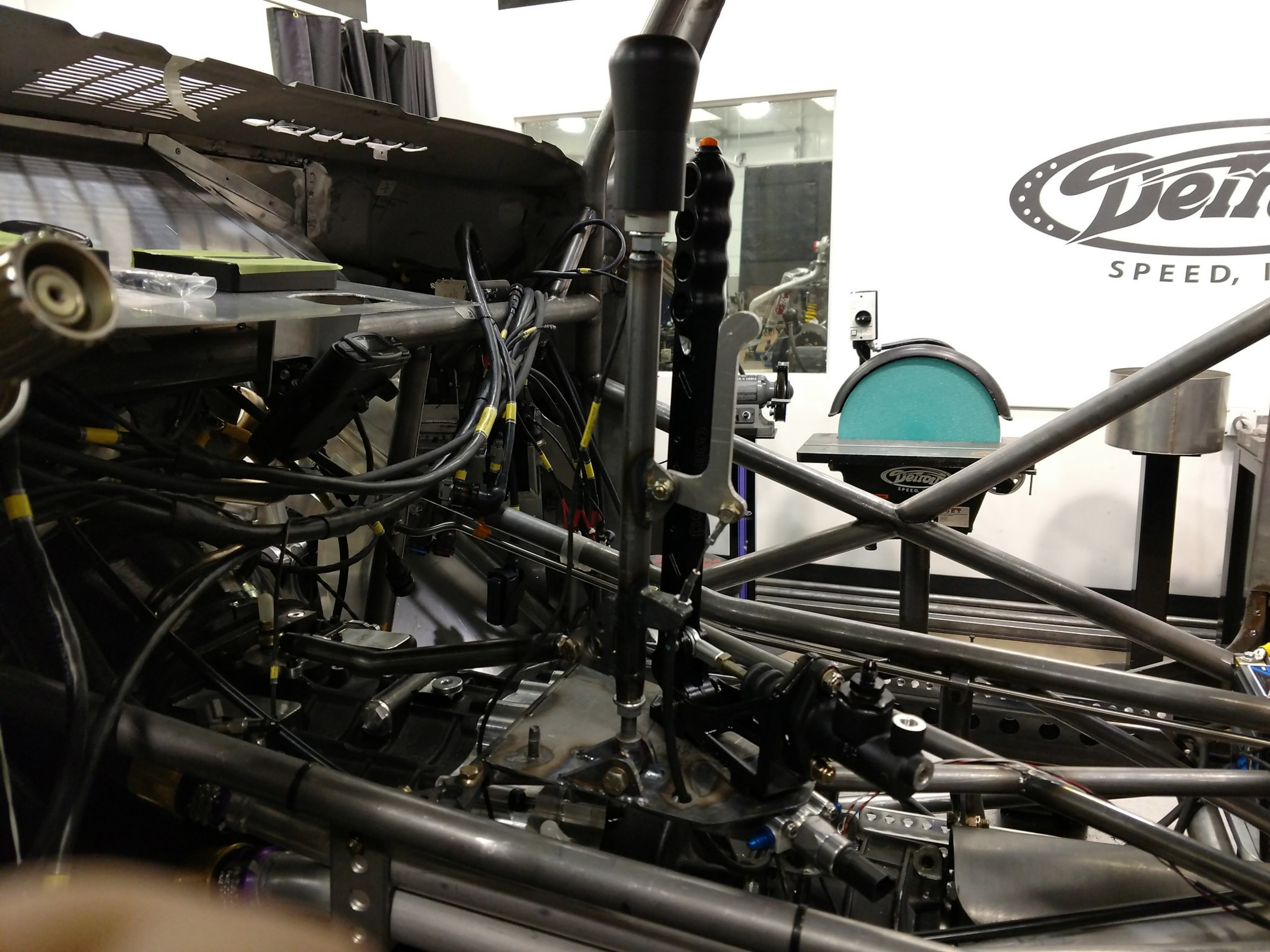
MADE IN THE USA
ATL INC. COM

RACING
FUEL CELLS

ATL®

SPEED INC





Vetrol
SPEED, I

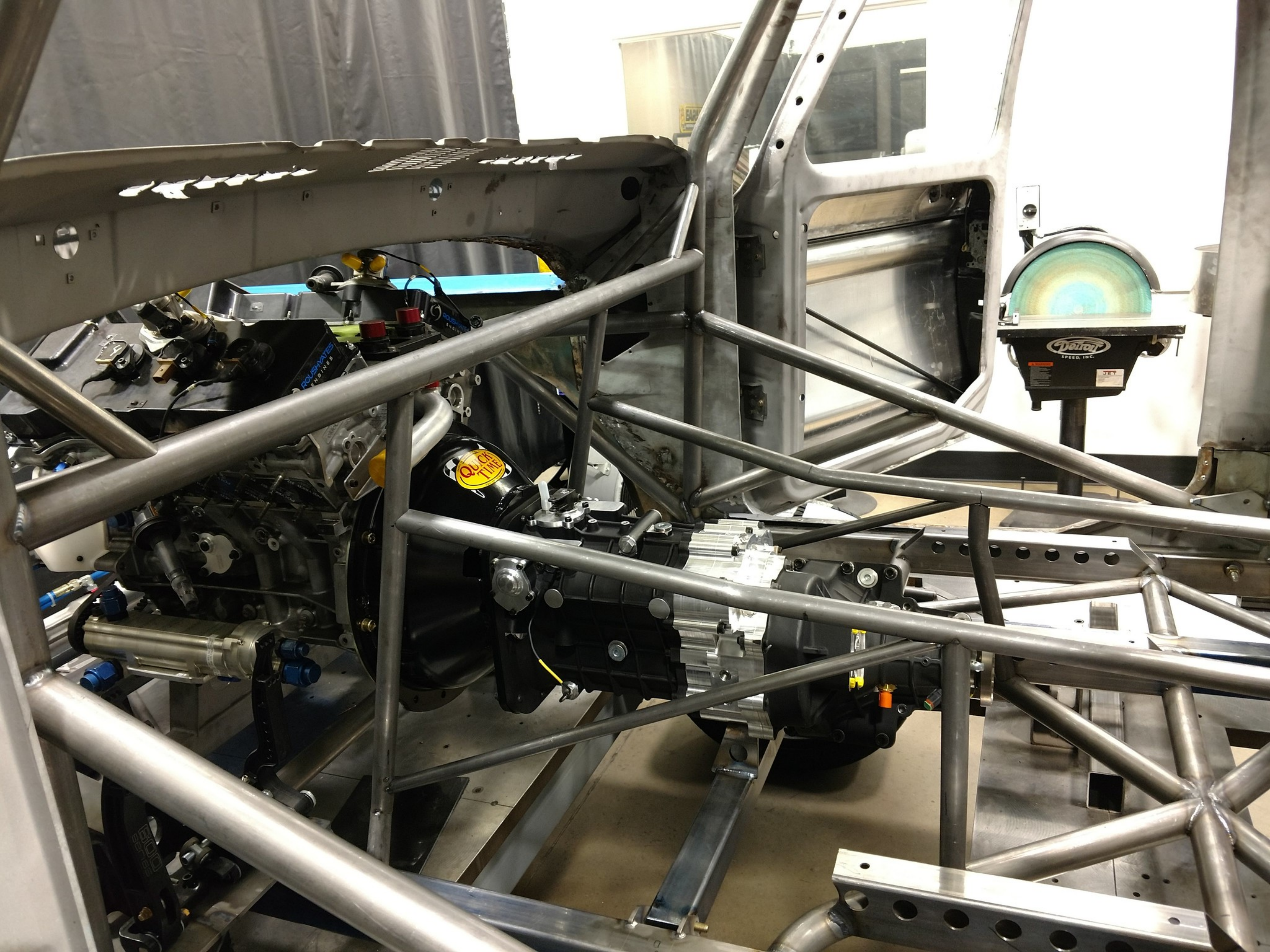
Vetrol
SPEED

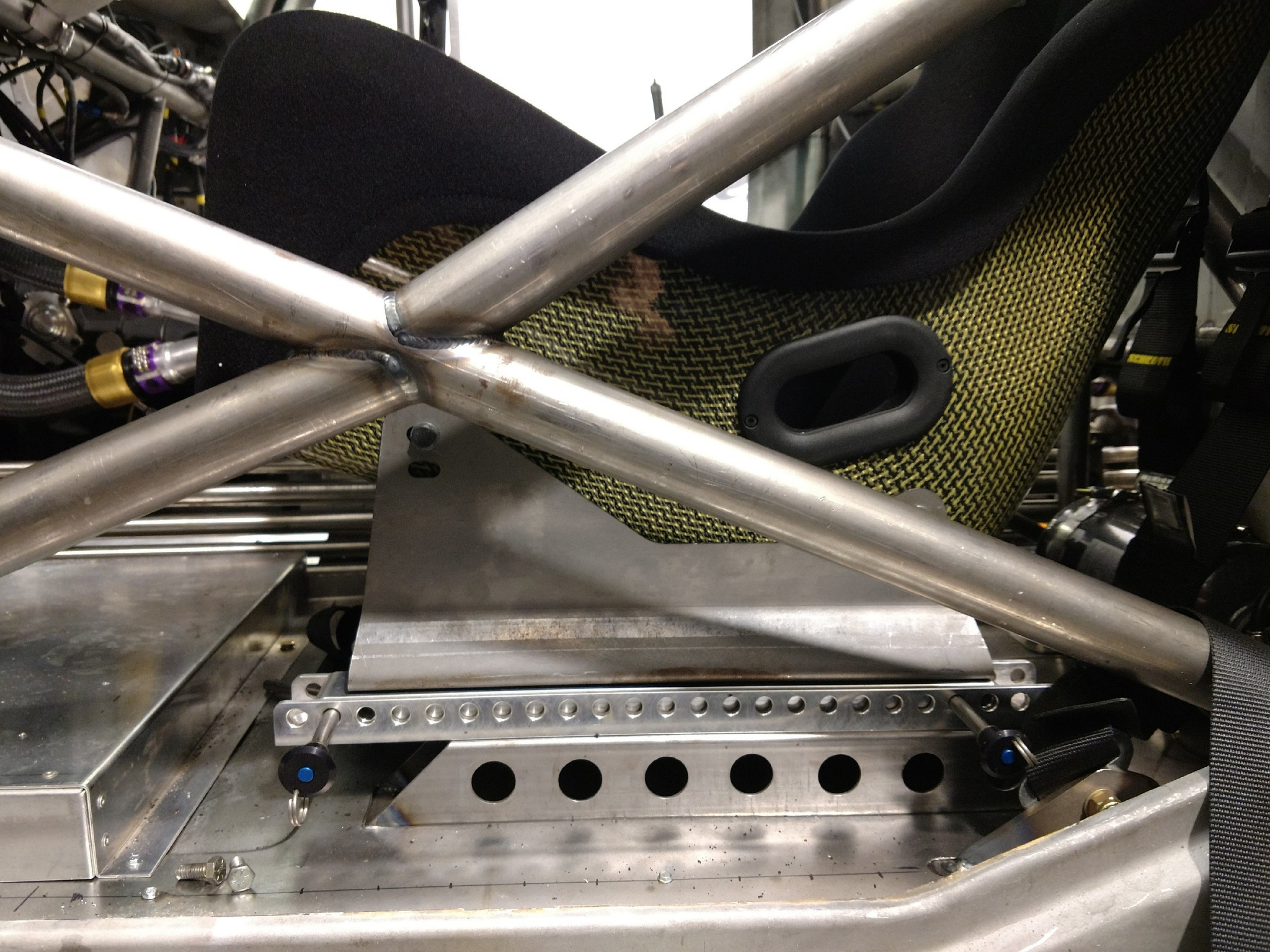


STUART ADAMS'
1969 CAMARO

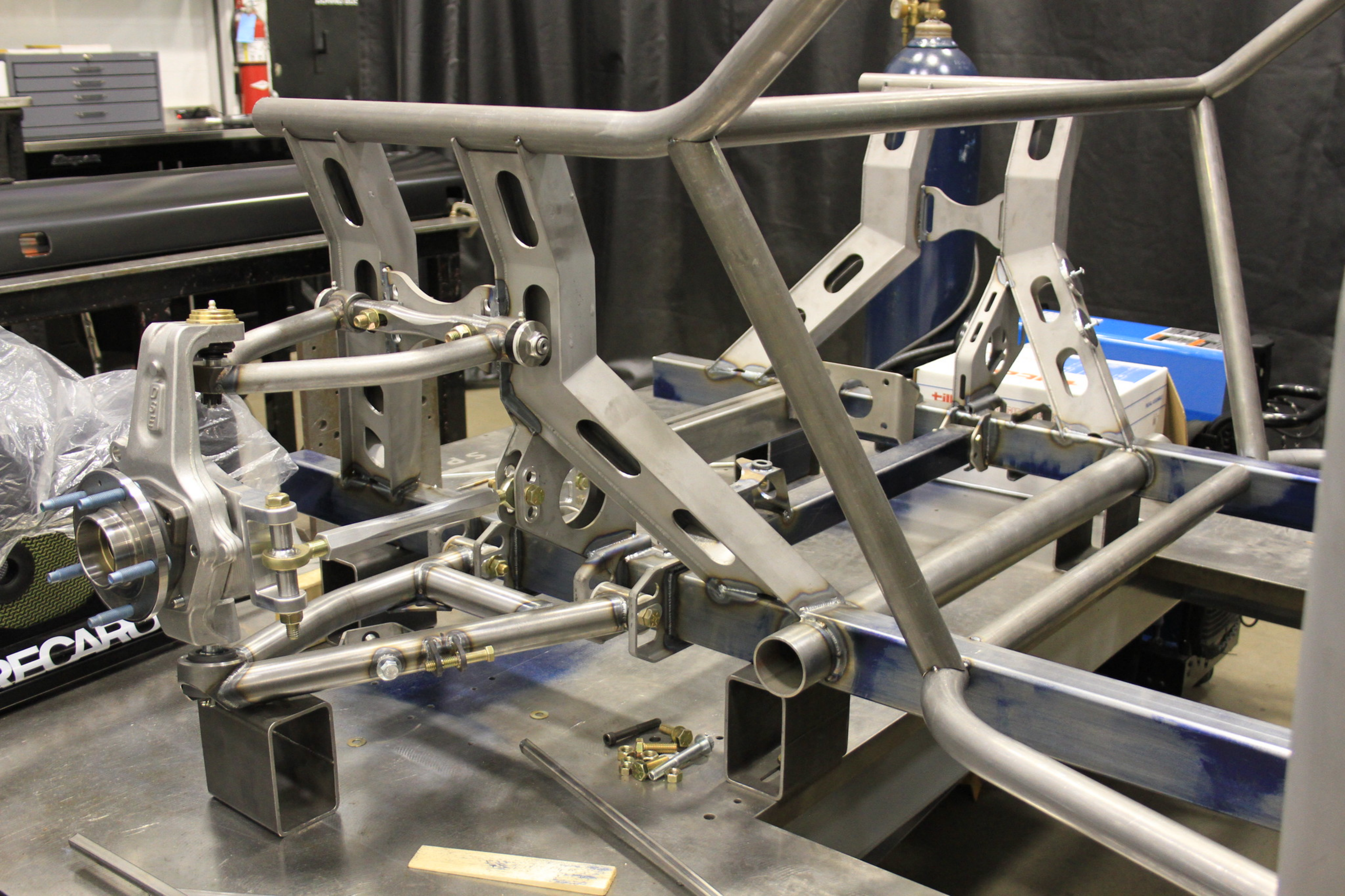
15 7/8















DETROIT
SPEED, INC.

Miller

The Power of Blue.

ESAVI
6080

1283
DA022

912

912

WATER BOTTLE LABEL



RECARO

EXIT

PROXES 5710

TOYO



