

Class X
English Language and Literature (184)
Sample Question Paper 2018-19

Time allowed: 3 Hours

Max. Marks: 80

General Instructions:

I. The question paper is divided into three sections :

SECTION A :	Reading	20 MARKS
SECTION B :	Writing and Grammar	30 MARKS
SECTION C :	Literature	30 MARKS

II. All questions are compulsory.

III. You may attempt any section at a time.

IV. All questions of that particular section must be attempted in the correct order.

SECTION-A
(READING)

20

1. Read the passage given below -

1. Necessity is indeed the mother of invention. When areas in and around Leh began to experience water shortages, life didn't grind to a halt. Why? Because Chewang Norphel, a retired civil engineer in the Jammu and Kashmir government came up with the idea of artificial glaciers.
2. Ladakh, a cold desert at an altitude of 3,000-3,500 metres above sea level, has a low average annual rainfall rate of 50mm. Glaciers have always been the only source of water. Agriculture is completely dependent on glacier melt unlike the rest of river/monsoon-fed India. But over the years with increasing effects of climate change, rainfall and snowfall patterns have been changing, resulting in severe shortage and drought situations. Given the severe winter conditions, the window for farming is usually limited to one harvest season
3. It is located between the natural glacier above and the village below. The one closer to the village and lowest in altitude melts first, providing water during April/May, the crucial sowing season. Further layers of ice above melt with increasing temperature thus ensuring continuous supply to the fields. Thus, farmers have been able to manage two crops instead of one. It costs about Rs.1,50,000 and above to create one.
4. Fondly called the "glacier man", Mr. Norphel has designed over 15 artificial glaciers in and around Leh since 1987. In recognition of his pioneering effort, he was conferred the Padma Shri by President Pranab Mukherjee, in 2015.
5. There are few basic steps followed in creating the artificial glacier.

6. River or stream water at higher altitude is diverted to a shaded area of the hill, facing north, where the winter sun is blocked by a ridge or a mountain range. At the start of winter/November, the diverted water is made to flow onto sloping hill face through distribution channels. Stone embankments are built at regular intervals which impede the flow of water, making shallow pools and freeze, forming a cascade of ice along the slope. Ice formation continues for 3-4 months resulting in a large accumulation of ice which is referred to as an “artificial glacier”.
(349 words)

Adapted from: <http://www.thehindu.com/opinion/op-ed/a-himalayan-solution/article7927749.ece>

1.1 Attempt *any eight* of the following questions on the basis of the passage you have read.

1x8=8

- i. Who was Chewang Norphel?
- ii. What kind of land form is Ladakh?
- iii. Why have Glaciers been the only source of water for Ladakh?
- iv. Why has the pattern of snowfall and rainfall changed?
- v. How are Glaciers significant for irrigation?
- vi. How do farmers manage to grow two crops instead of one?
- vii. In which year did President Pranab Mukherjee confer Padmashri to Mr. Norphel?
- viii. How many months does the ice formation continue for?
- ix. Find the word in the paragraph 6 which means the same as ‘gathering’?

2. Read the passage given below and answer the questions that follow:

1. Have you ever failed at something so miserably that the thought of attempting to do it again was the last thing you wanted to do?
2. If your answer is yes, then you are “not a robot.” Unlike robots, we human beings have feelings, emotions, and dreams. We are all meant to grow and stretch despite our circumstances and our limitations. Flourishing and trying to make our dreams come true is great when life is going our way. But what happens when it’s not? What happens when you fail despite all of your hard work? Do you stay down and accept the defeat or do you get up again and again until you are satisfied? If you have a tendency to persevere and keep going then you have what experts call, grit.
3. Falling down or failing is one of the most agonizing, embarrassing, and scariest human experiences. But it is also one of the most educational, empowering, and essential parts of living a successful and fulfilling life. Did you know that perseverance (grit) is one of the seven qualities that have been described as the keys to personal success and betterment in society? The other six are: curiosity, gratitude, optimism, self-control, social intelligence, and zest. Thomas Edison is a model for grit for trying 1,000 plus times to invent the light bulb. If you are reading this with the lights on in your room, you know well he succeeded. When asked why he kept going despite his hundreds of failures, he merely stated that what he had been not failures. They were hundreds of ways not to create a light bulb. This statement not only revealed his grit but also his optimism for looking at the bright side

4. Grit can be learned to help you become more successful. One of the techniques that help is mindfulness. Mindfulness is a practice that helps the individual stay in the moment by bringing awareness of his or her experience without judgment. This practice has been used to quiet the noise of their fears and doubts. Through this simple practice of mindfulness, individuals have the ability to stop the self-sabotaging downward spiral of hopelessness, despair, and frustration.
5. What did you do to overcome the negative and self-sabotaging feelings of failure? Reflect on what you did, and try to use those same powerful resources to help you today. (396 words)

[Adapted from http://www.huffingtonpost.com/debbie-lyn-toomey/grit_b_12768724.html]

2.1 On the basis of your reading of the passage, answer *any four* of the following questions in about 30-40 words each.

2X4=8

- i. According to the passage, what are the attributes of a human?
- ii. What is perceived as grit?
- iii. How is 'failing' an educational and empowering part of human life?
- iv. In what ways can grit be developed?
- v. How does mindfulness help?

2.2 On the basis of your reading of the passage, answer *any four* of the following:

1X4=4

- i. While inventing the light bulb, Thomas Edison had failed_____.
a. 1000 times b. 10000 plus times c. 1000 plus times d. 10000 times
- ii. Failure is a part of_____life.
a. normal b. common c. human d. ordinary
- iii. In paragraph 2,_____means continue.
a. robots b. satisfied c. persevere d. flourishing
- iv. In paragraph 3, the synonym of distressing is _____.
a. embarrassing b. scariest c. agonizing d. failing
- v. _____helps in preventing individuals from going down the lines of despair.
a. success b. fear c. doubt d. mindfulness

SECTION B :
(WRITING AND GRAMMAR)

30

3. You are Sujal /Sujata of Pragya Public School, Nangal, Punjab who had arranged a trip for fifty students to Nanital in summer vacations for ten days with 'Mount Travels and Tourism'. The arrangements done by the travel agency were far below the standard .The accommodation and food facilities were inferior in quality .Write a letter of complaint to the director of the agency to stop duping tourists with false promises as it tarnishes the image of locals . (100-120 words)

8

OR

India is a highly populated country. People lack in maintaining proper sanitation and hygiene as a result they suffer from various diseases. India has a serious sanitation challenge; around 60 per cent of the world's open defecation takes place in India. Poor sanitation causes health hazards including diarrhea, particularly in children under 5 years of age, malnutrition and deficiencies in physical development and cognitive ability. You are Nitish /Nikita, head boy/girl of Anand Public School, Jaipur. Write a letter to the editor of a national daily, highlighting the problem and suggesting practical ways to ensure public sanitation and the right to dignity and privacy. (100-120 words)



4. Develop a short story with the help of the given visual / starting line .Give a suitable title to your story. (150-200 words) 10

A.



OR

- B. It was an amazing day, full of fun and frolic. We all stood aghast to see a strange flying object over our heads. We started guessing ...(write in 150-200 words)

5. Fill in any four of the blanks choosing the most appropriate option from the ones given in the box. Write the answers in your answer –sheet against the correct blank numbers. 1x4=4

- Butterflies are abundant (a)_____the Central African Republic.
- It (b)_____home to nearly 600 identified species.
- Many butterflies are brilliantly coloured and small(c)_____some are as big as saucers.
- Farmer Philippe (d)_____solace in collecting butterfly wings from his fields and turning them into works of art.
- My favourite hobby, since my childhood, is (e) _____butterflies.

1. (a) (i) in	(ii) from	(iii) for	(iv) into
2. (b) (i) has	(ii) is	(iii) was	(iv) are
3. (c) (i) if	(ii) therefore	(iii) so	(iv) while
4. (d) (i) find	(ii) to find	(iii) finding	(iv) finds
5. (e) (i) catch	(ii) caught	(iii) catching	(iv) has been catching

6. In the following passage one word has not been edited in each line .Write the incorrect word along with the correct word in the space provided. Do *any four* .

4

	incorrect	correct
In Himalayas, the desert is turning green .	e.g. the	a
Climate change in a Indian region of	a) _____	
Ladakh has shrunk glaciers or has made rainfall	b) _____	
and temperature unpredictable. Water has	c) _____	
needed to irrigating the fields .	d) _____	
Farmers may requiring aid from the government.	e) _____	

7. Rearrange **any four** of the following word or phrases to make meaningful sentences.

4

- enters / millions tons / the/ every year / of / ocean /plastic
- are / waters/ sightings / junk – filled /of /common
- population / middle-class / increasing / is / coastlines / along
- trash/ increase/ has led / waste management/lack/of/in / to
- close/like/ others/ helping/my/friends

SECTION C (LITERATURE)

30

8. Read the extracts given below and answer the questions that follow.

1x4=4

A. The moon was coming up in the east, behind me, and stars were shining in the clear sky above me. There wasn't a cloud in the sky. I was happy to be alone high up above the sleeping countryside.

Questions :

- Who narrates the above lines?
- Which type of weather conditions are being discussed in the above lines?
- Explain the term 'the sleeping countryside'?
- Why is the narrator happy?

OR

B. At about the age of twenty five, the Prince, thereof shielded from the sufferings of the world, while hunting out glanced upon a sick man, then an aged man, then a funeral procession, and finally a monk begging for alms. These sights so moved him that he at once became a beggar and went out into the world to seek enlightenment concerning the sorrows he had witnessed.

Questions :

- Whose age has been referred here?
- What was the effect of sights on the prince?
- How did witnessing sorrow change him?
- What does 'glance' imply in the given lines?

9. Answer *any four* of the following questions in 30-40 words each.

2x4=8

- i. Hari Singh is both a thief and a human being. Explain.
- ii. How does the necklace change the course of the Loisel's life?
- iii. Explain the qualities of the post office employees?
- iv. Why would you not agree with Lencho calling them 'a bunch of crooks'?
- v. Bholi's heart was overflowing with a 'New hope and a new life'. What does the phrase 'the new hope and the new life' mean?

10. Attempt *any one* out of two long answer type questions in 100-120 words.

8

- A. People should always try to live within their means. Aspirations have no limits but one should never forget the ground realities. Elaborate on the basis of chapter, "The Necklace".

OR

- B. Simple moment proves to be very significant and saves rest of the day of poet from being wasted. Explain on the basis of the poem 'Dust of Snow'.

11. (A) Answer the following questions in about 200-250 words.

10

- a. Kitty plays a vital role in Anne's life. Elucidate

OR

- b. In spite of the heartrending circumstances in which 'The Diary' was written, it was not an inspiring rather a depressing book. Explore.

OR

(B) Answer the following questions in about 200-250 words (10 marks)

- a. How did Miss Anne Sullivan help Helen to communicate properly?

OR

- b. Give a pen portrait of Helen Keller.

प्रतिदर्श प्रश्न पत्र (2018-19)

हिन्दी पाठ्यक्रम- अ

कक्षा - दसवीं

निर्धारित समय- 3 घंटे

अधिकतम अंक - 80

सामान्य निर्देश:-

- 1 इस प्रश्नपत्र में चार खंड हैं - क, ख, ग और घ ।
- 2 चारों खंडों के प्रश्नों के उत्तर देना अनिवार्य है ।
- 3 यथासंभव प्रत्येक खंड के प्रश्नों के उत्तर क्रमशः दीजिए ।

	खंड-‘क’ (अपठित अंश)	अंक-15
1	निम्नलिखित गद्यांश को ध्यानपूर्वक पढ़िए और पूछे गए प्रश्नों के उत्तर लिखिए-	(8)
	<p>सृष्टि ने मानव को जो सर्वश्रेष्ठ वरदान दिए हैं उनमें से एक महत्वपूर्ण वरदान है - स्वस्थ शरीर । स्वस्थ शरीर से ही जिंदगी की सही शुरुआत होती है । अस्वस्थ शरीर में कहाँ जीवन होता है ? वह तो जीवन पर बोझ होता है । जीवन के सभी सुख, सभी सौंदर्य, सभी आनंद स्वस्थ होने पर ही मिलते हैं । स्वास्थ्य सभी जीवधारियों के आनंदमय जीवन की कुंजी है; क्योंकि स्वास्थ्य के बिना जीवधारियों की समस्त क्रियाएँ-प्रक्रियाएँ रुक जाती हैं या शिथिल हो जाती हैं । जीवन को जल भी इसीलिए कहा जाता है । जिस प्रकार रुका जल सड़ जाता है, दुर्गन्धयुक्त हो जाता है, ठीक इसी प्रकार शिथिल और कर्महीन जीवन से स्वास्थ्य खो जाता है । स्वास्थ्य और खेल-कूद का परस्पर गहरा संबंध है । पशु-पक्षी हो या मनुष्य, जो खेलता-कूदता नहीं, वह उत्फुल्ल और प्रसन्न रह नहीं सकता । जब हम खेलते हैं तो हममें नया प्राणावेग, नई स्फूर्ति और नई चेतना आ जाती है । हम देखते हैं कि हवा के झोंके एक-दूसरे का पीछा करते हुए दूर-दूर तक दौड़ते हैं, वृक्षों की शाखाओं को हिला-हिलाकर अठखेलियाँ करते हैं । आकाश में उड़ते पक्षी तरह-तरह की क्रीड़ाएँ करते हैं । हमें भी जीवन-जगत् से प्रेरणा लेते हुए खुले मन से खेल-कूद में भाग लेना चाहिए ।</p>	
(क)	स्वास्थ्य और खेल-कूद परस्पर एक दूसरे के पूरक हैं - कैसे ?	(2)

(ख)	उदाहरण देते हुए सिद्ध कीजिए कि प्रकृति भी खेल-कूद पसंद करती है ।	(2)
(ग)	स्वास्थ्य का कर्म से क्या संबंध है ?	(2)
(घ)	जीवन को जल क्यों कहा गया है ?	(1)
(ङ)	उपर्युक्त गद्यांश के लिए उपयुक्त शीर्षक लिखिए ।	(1)
2	निम्नलिखित काव्यांश को ध्यानपूर्वक पढ़िए और पूछे गए प्रश्नों के उत्तर लिखिए- अपने नहीं अभाव मिटा पाया जीवन भर पर औरों के सभी अभाव मिटा सकता हूँ । तूफानों-भूचालों की भयप्रद छाया में, मैं ही एक अकेला हूँ जो गा सकता हूँ । मेरे 'मैं' की संज्ञा भी इतनी व्यापक है, इसमें मुझ-से अगणित प्राणी आ जाते हैं । मुझको अपने पर अदम्य विश्वास रहा है । मैं खंडहर को फिर से महल बना सकता हूँ । जब-जब भी मैंने खंडहर आबाद किए हैं, प्रलय-मेघ भूचाल देख मुझको शरमाए । मैं मजदूर मुझे देवों की बस्ती से क्या, मैंने अगणित बार धरा पर स्वर्ग बनाए । उपर्युक्त काव्य-पंक्तियों में किसका महत्व प्रतिपादित किया गया है ?	(7)
(1)	स्वर्ग के प्रति मजदूर की विरक्ति का क्या कारण है ?	(1)
(2)	किन कठिन परिस्थितियों में भी मजदूर ने अपनी निर्भयता प्रकट की है ?	(1)
(3)	मेरे 'मैं' की संज्ञा भी इतनी व्यापक है इसमें मुझ-से अगणित प्राणी आ जाते हैं ।	(2)
(4)	उपर्युक्त पंक्ति का भाव स्पष्ट कीजिए ।	(2)
(5)	अपनी शक्ति और क्षमता के प्रति मजदूर ने क्या कहकर अपना आत्म-विश्वास प्रकट किया है ?	(2)
	अथवा	
	हँसते खिलखिलाते रंग-बिरंगे फूल क्यारी में देखकर जी तृप्त हो गया । नथुनों से प्राणों तक खिंच गई	

	<p> गंध की लकीर सी आँखों में हो गई रंगों की बरसात अनायास कह उठा वाह ! धन्य है वसंत ऋतु । लौटने को पैर ज्यों बढ़ाये तो क्यारी के कोने में दुबका एक नन्हा फूल अचानक बोल पड़ा : सुनो एक छोटा-सा सत्य तुम्हें सौंपता हूँ धन्य है वसंत ऋतु, ठीक है पर उसकी धन्यता उसकी कमाई नहीं वह हमने रची है, हमने यानी मैंने मुझ जैसे मेरे अनगिनत साथियों ने - जिन्होंने इस क्यारी में अपने-अपने ठाँव पर धूप और बरसात, जाड़ा, और पाला झेल सूरज को तपा है पूरी आयु एक पाँव पर तुमने ऋतु को बखाना, पर क्या कभी पल भर भी तुम उस लौ को भी देख सके जिसके बल मैंने और इसने और उसने यानी मेरे एक-एक साथी ने मिट्टी का अँधेरा फोड़ सूरज से आँखें मिलाई हैं ? उसे यदि जानते तो तुमसे भी रंग जाती एक ऋतु । </p>	
(1)	फूल ने कवि को कौन-सा छोटा-सा सत्य सौंपा ?	(1)
(2)	वसंत की धन्यता को किसने रचा है ?	(1)
(3)	फूल और उसके साथियों ने मिट्टी का अँधेरा फोड़कर किससे आँखें मिलाई हैं ?	(1)

(4)	फूलों और उसके जैसे अनगिनत साथियों ने क्या किया है ?	(2)
(5)	हँसते खिलखिलाते फूलों को देख कवि को क्या अनुभव हुआ ?	(2)
	खंड-‘ख’ (व्यावहारिक व्याकरण)	अंक-15
3 1 2 3 4	निर्देशानुसार किन्हीं तीन का उत्तर लिखिए- युवा धनुर्धर को सेनापति ने युद्ध में भेजा । (मिश्र वाक्य में बदलिए) मैं विद्यालय पहुँचा परन्तु घंटी बज चुकी थी । (सरल वाक्य में बदलिए) जो मन लगाकर काम करते हैं, उन्हें सफलता मिलती है । (आश्रित उपवाक्य छाँटकर भेद भी लिखिए) मेरी माँ चाहती है कि मैं अच्छा इंसान बनूँ । (रेखांकित उपवाक्य का भेद लिखिए)	(103 = 3)
4 1 2 3 4 5	निम्नलिखित वाक्यों में से किन्हीं चार वाक्यों का निर्देशानुसार वाच्य परिवर्तन कीजिए- मोहन से पैदल चला नहीं जाता । (कर्तृवाच्य में बदलिए) आओ, वहाँ बैठे । (भाववाच्य में बदलिए) किसान खेतों में बीज बोता है । (कर्मवाच्य में बदलिए) छात्रों द्वारा पाठ याद किया जाता है । (कर्तृवाच्य में बदलिए) पक्षी आकाश में उड़ेंगे । (कर्मवाच्य में बदलिए)	(104 = 4)
5 1 2 3 4 5	5 निम्नलिखित वाक्यों में से किन्हीं चार वाक्यों के रेखांकित पदों का पद-परिचय लिखिए- सूर्योदय हुआ और पक्षी चहचहाने लगे । वीर पुरुषों का सर्वत्र आदर किया जाता है । अध्यापिका ने बच्चों को एक कहानी सुनाई । अवनि कल आएगी । इलाहाबाद में तीन नदियों का संगम है ।	(104 = 4)
6 1 2	निम्नलिखित प्रश्नों में से किन्हीं चार प्रश्नों के उत्तर दीजिए – ‘वीर’ रस का एक उदाहरण लिखिए । निम्नलिखित काव्य पंक्तियों में रस पहचान कर लिखिए- एक ओर अजगरहि लखि, एक ओर मृगराय ।	(104 = 4)

3 4 5	विकल बटोही बीच ही परयो मूरछा खाय 'निर्वेद' किस रस का स्थायी भाव है ? करुण रस' का स्थायी भाव क्या है ? घृणित वस्तुओं को देखकर अथवा उनके बारे में सुनकर मन में जो भाव उत्पन्न होता है, उससे किस रस की व्युत्पत्ति होती है ?	
	खंड-'ग' (पाठ्य पुस्तक एवं पूरक पाठ्य पुस्तक)	अंक- 30
7	निम्नलिखित गद्यांश को ध्यानपूर्वक पढ़कर पूछे गए प्रश्नों के उत्तर लिखिए- मैं नहीं जानता इस संन्यासी ने कभी सोचा था या नहीं कि उसकी मृत्यु पर कोई रोएगा लेकिन उस क्षण रोने वालों की कमी नहीं थी । (नाम आँखों को गिनना स्याही फैलाना है ।) इस तरह हमारे बीच से वह चला गया जो हममें से सबसे अधिक छायादार फल-फूल गंध से भरा और सबसे अलग, सबका होकर, सबसे ऊँचाई पर, मानवीय करुणा की दिव्य चमक में लहलहाता खड़ा था । जिसकी स्मृति हम सबके मन में (जो उनके निकट थे) किसी यज्ञ की पवित्र आग की आँच की तरह आजीवन बनी रहेगी । मैं उस पवित्र ज्योति की याद में श्रद्धानत हूँ ।	(5)
1 2 3	नम आँखों को गिनना स्याही फैलाना है ' ऐसा लेखक ने क्यों कहा ? लेखक ने फ़ादर के लिए किन-किन विशेषणों का प्रयोग किया है और क्यों ? गद्यांश में फ़ादर की स्मृति को किसके समान बताया गया है ?	(2) (2) (1)
8 1 2 3 4 5	निम्नलिखित प्रश्नों में से किन्हीं चार प्रश्नों के उत्तर संक्षेप में लिखिए- 1 हालदार साहब के लिए कौन-सा कौतूहल दुर्दमनीय हो उठा, जिसे पानवाले से पूछे बिना नहीं रह सके ? 2 बालगोबिन भगत की दिनचर्या लोगों के अचरज का कारण क्यों थी ? 3 लेखिका मन्नू भंडारी अपने ही घर में हीन भावना का शिकार क्यों हो गई ? 4 उस्ताद बिस्मिल्ला खां काशी छोड़कर अन्यत्र क्यों नहीं जाना चाहते थे ? 5 नवाब साहब खीरा खाने के अपने ढंग के माध्यम से क्या दिखाना चाहते थे ?	(204=8)
9	निम्नलिखित काव्यांश को ध्यानपूर्वक पढ़कर पूछे गए प्रश्नों के उत्तर लिखिए- ऊधौ, तुम हौ अति बड़भागी । अपरस रहत सनेह तगा तैं, नाहिन मन अनुरागी । पुरइनि पात रहत जल भीतर, ता रस देह न दागी । ज्यों जल माहँ तेल की गागरि, बूँद न ताकों लागी । प्रीती-नदी में पाऊँ न बोरयौ, दृष्टि न रूप परागी । 'सूरदास' अबला हम भोरी, गुर चांटी ज्यों पागी	(5)

	गोपियों ने क्या कहकर उद्धव पर व्यंग्य किया है ?	
1	गोपियों ने क्या कहकर उद्धव पर व्यंग्य किया है ?	(1)
2	गोपियों ने उद्धव के व्यवहार की तुलना किस-किस से की है और क्यों ?	(2)
3	गोपियों ने अपनी तुलना गुड से लिपटी चीटियों से क्यों की है ?	(2)
10	निम्नलिखित प्रश्नों में से किन्हीं चार प्रश्नों के उत्तर संक्षेप में लिखिए- 1 'संगतकार' कविता के आधार पर स्पष्ट कीजिए कि संगतकार जैसे व्यक्ति सर्वगुण सम्पन्न होकर भी समाज में आगे न आकर प्रायः पीछे ही क्यों रहते हैं ? धनुष भंग करने वाली सभा में एकत्रित जन 'हाय-हाय' क्यों पुकारने लगे थे ? 2 'राम-लक्ष्मण परशुराम संवाद' पाठ के आधार पर अपने विचार लिखिए । वर्तमान संदर्भों में 'कन्यादान' कविता कितनी उपयुक्त है ? स्पष्ट कीजिए। 3 सामाजिक क्रान्ति में साहित्य की भूमिका महत्वपूर्ण होती है । 'उत्साह' कविता 4 के आधार पर इस कथन की समीक्षा कीजिए । यह 'दंतुरित मुस्कान' कविता में 'बाँस और बबूल' किसके प्रतीक बताए गए हैं ? 5 इन पर शिशु की मुस्कान का क्या असर होता है ?	(204=8)
11	'माता का अंचल' पाठ में भोलानाथ द्वारा चूहे के बिल में पानी डालना बच्चों की किस मनोवृत्ति को प्रकट करता है ? क्या यह उचित है ? पशु-पक्षियों के संरक्षण के उपाय भी बताइए ।	(4)
	अथवा	
	समाचार-पत्रों की जन-जागरण में क्या भूमिका होती है? 'जॉर्ज पंचम की नाक' पाठ के आधार पर स्पष्ट कीजिए ।	
	खंड-'घ' (लेखन)	अंक-20
12	निम्नलिखित में से किसी एक विषय पर दिए गए संकेत बिन्दुओं के आधार पर लगभग 200 से 250 शब्दों में निबंध लिखिए-	(10)
1	आपदा प्रबंधन <ul style="list-style-type: none"> • प्रस्तावना • प्राकृतिक आपदाएँ • दोषी कौन • सरकार की जिम्मेदारी • नागरिकों के कर्तव्य • उपाय 	

2	<p>सौर ऊर्जा</p> <ul style="list-style-type: none"> • प्रस्तावना • सौर ऊर्जा से तात्पर्य • सौर ऊर्जा का उत्पादन • लाभ • उपसंहार 	
3	<p>अपने लिए जिए, तो क्या जिए</p> <ul style="list-style-type: none"> • प्रस्तावना • मनुष्य में बढ़ती स्वार्थपरता • परोपकार की प्रकृति और पूर्वजों की सीख • मानव जीवन की सार्थकता • उपसंहार 	
13	<p>दूरदर्शन के महानिदेशक को पत्र लिखकर राष्ट्रीय एकता तथा साम्प्रदायिक सदभाव बढ़ाने वाले कार्यक्रम प्रसारित करने का आग्रह कीजिए ।</p> <p>अथवा</p> <p>‘सामाजिक सेवा कार्यक्रम’ के अंतर्गत किसी गाँव में सफाई अभियान के अनुभवों का उल्लेख करते हुए अपने मित्र को पत्र लिखिए ।</p>	(5)
14	<p>आपके मोहल्ले के पार्क में लड़कियों को आत्म रक्षा के गुण सिखाने हेतु एक कैंप लगाया जा रहा है, इसके लिए एक विज्ञापन लगभग 20-25 शब्दों में तैयार कीजिए ।</p> <p>अथवा</p> <p>आधुनिक सुविधाओं से सुसज्जित घर किराए पर देने के लिए विज्ञापन लगभग 20-25 शब्दों में तैयार कीजिए ।</p>	(5)

प्रतिदर्श प्रश्न – पत्र

(2018-19)

हिन्दी 'ब'

कक्षा – दसवीं

निर्धारित समय: 3 घंटे

अधिकतम अंक : 80

सामान्य निर्देश :

- इस प्रश्न-पत्र में चार खंड हैं, क,ख,ग और घ ।
- चारों खंडों के प्रश्नों के उत्तर देना अनिवार्य है ।
- यथासंभव प्रत्येक खंड के प्रश्नों के उत्तर क्रमशः दीजिए ।

	खंड – क (अपठित अंश)	
प्र.-1	निम्नलिखित गद्यांश को ध्यानपूर्वक पढ़कर पूछे गए प्रश्नों के उत्तर दीजिए – सुख विश्वास से ही उत्पन्न होता है । सुख जड़ता से उत्पन्न होता है । पुराने जमाने के लोग इसलिए सुखी थे कि ईश्वर की सत्ता में उन्हें विश्वास था । उस जमाने के नमूने आज भी हैं, मगर वे महानगरों में कम मिलते हैं । उनका जमघट गाँवों, कस्बों और छोटे- छोटे नगरों में हैं। इनके बहुत अधिक असंतुष्ट न होने के कारण यह है कि जो चीज उनके बस में नहीं है, उसे वे अदृश्य की इच्छा पर छोड़कर निश्चिंत हो जाते हैं । इस प्रकार सुखी वे लोग होते हैं, जो सच्चे अर्थों में जड़तावादी है, क्योंकि उनकी आत्मा पर कठखोदी चिड़िया चोंच नहीं मारा करती, किंतु जो न जड़ता का त्याग करता है और न ईश्वर के आस्तित्व का। असली वेदना उसी संदेहवादी मनुष्य की वेदना है । 'परिचय' का आधुनिक बोध इसी पीड़ा से ग्रस्त है । वह मनुष्य न तो जानवर की तरह खा-पीकर संतुष्ट रह सकता है, न अदृश्य का अवलंब लेकर चिंता मुक्त हो सकता है । इस अभागे मनुष्य के हाथ न तो लोक रह गया है, न परलोक । लोक इसलिए नहीं कि वह जानवर बनकर जीने को तैयार नहीं है और परलोक इसलिए कि विज्ञान उसका समर्थन नहीं करता है । निदान, संदेहवाद के झटके खाता हुआ यह आदमी दिन-रात व्याकुल रहता है, और रह-रहकर अपनी समाप्ति की कल्पना करके अपनी व्याकुलता का रेचन करता है ।	
1.	किस प्रकार के इंसान सुखी होते हैं और क्यों?	(2)
2.	संदेह वादी कौन होता है ? वह निरंतर किस स्थिति से गुजरता रहता है ?	(2)
3.	संदेह वादी लोक के सुख और परलोक के अनादर से वांचित क्यों रहता है ?	(2)

4.	संदेह-वाद से पीड़ित व्यक्ति निरंतर किस प्रकार की अनुभूति से व्यथित रहता है ?	(2)
5.	उपर्युक्त गद्यांश उपयुक्त शीर्षक दीजिए ।	(1)
प्र.-2	निम्नलिखित काव्यांश को ध्यानपूर्वक पढ़कर पूछे गए प्रश्नों के उत्तर लिखिए तू हिमालय नहीं, तू न गंगा- यमुना तू त्रिवेणी नहीं, तू न रामेश्वरम तू महाशील की है अमर कल्पना देश । मेरे लिए तू परम वंदना । मेघ करते नमन, सिंधु गोदावरी है कराती युगों से तुझे आचमन तू पुरातन बहुत, तू नए से नया तू महाशील की है अमर कल्पना । देश मेरे लिए तू महा – अर्चना शक्ति – बल का समर्थक रहा सर्वदा तू परम तत्व का नित विचारक रहा ।	
1.	कवि का देश को 'महाशील की अमर कल्पना' कहने से क्या तात्पर्य है ?	(2)
2.	भारत देश पुराना होते हुए भी नित नूतन कैसे है ?	(2)
3.	देश का सत्कार प्रकृति किस प्रकार करती है ? काव्यांश के आधार पर स्पष्ट कीजिए ।	(2)
	अथवा	
	मेघ आए बड़े बन-ठन के सँवर के। आगे-आगे नाचती-गाती बयार चली, दरवाजे-खिड़कियाँ खुलने लगी गली-गली। पाहुन ज्यों आए हो गाँव में शहर के। मेघ आए बड़े बन-ठन के सँवर के।। पेड़ झुक झाँकने लगे गरदन उचकाए, आँधी चली, धूल भागी घाघरा उठाए, बूढ़े पीपल ने आगे बढ़कर जुहार की बरस बाद सुधि लीन्ही-बोली अकुलाई लता ओट हो किवार की	
(क)	पाहुन किसे कहा गया है और क्यों?	(2)
(ख)	बन-सँवर कर कौन आया और उससे क्या-क्या परिवर्तन हुए?	(2)
(ग)	बूढ़ा पीपल किसके रूप में है और उसने क्या किया?	(2)
	खंड – ख	
प्र.-3	शब्द कब पद का रूप ले लेते हैं ? उदाहरण सहित स्पष्ट कीजिए ।	(2)
	अथवा	

	पद कहलाने के लिए शब्द के अपने स्वरूप में क्या परिवर्तन लाना पड़ता है ? उदाहरण सहित स्पष्ट कीजिए।	
प्र.-4	नीचे लिखे वाक्यों में से किन्हीं तीन वाक्यों का निर्देशानुसार रचना के आधार पर वाक्य रूपांतरण कीजिए -	(3)
(क)	बालक रोया और चुप हो गया । (सरल वाक्य)	
(ख)	सूर्योदय होने पर पक्षी चहचहाने लगे । (संयुक्त वाक्य)	
(ग)	तुम गाड़ी रुकने के स्थान पर चले जाओ । (मिश्र वाक्य)	
(घ)	वह पत्रिका पढ़ने के लिए पुस्तकालय गया। (संयुक्त वाक्य)	
प्र.-5	निम्नलिखित शब्दों में से किन्हीं दो शब्दों का समास-विग्रह करते हुए समास का नाम लिखिए।	(2)
(क)	स्नेहमग्न, अंधकूप, शताब्दी	
(ख)	निम्नलिखित में से किन्हीं दो के समास – विग्रह को समस्त पद में परिवर्तित करके समास का नाम लिखिए –	(2)
(अ)	झड़ जाते हैं पते जिस ऋतु में	
(ब)	पेट भर कर	
(स)	सुख और दुख	
प्र.-6	निम्नलिखित वाक्यों में से किन्हीं चार वाक्यों को शुद्ध करके पुनः लिखिए -	(4)
(क)	हवाई अड्डे पर प्रधानमंत्री पहुँचे ।	
(ख)	‘गोदान’ उपन्यास मुंशी प्रेमचंद ने लिखा ।	
(ग)	उसने तरह-तरह के चमड़े के जूते खरीदे ।	
(घ)	केवल मात्र यहाँ दो पुस्तकें हैं ।	
(ड)	खरगोश को काटकर गाजर खिलाओं	
प्र.-7	रिक्त स्थानों की पूर्ति उचित मुहावरों द्वारा कीजिए -	(2)
(क)	वह स्वभाव से इतना उग्र है कि बात-बात पर है ।	
(ख)	गुप्तचर विभाग का काम यही है कि वह असामाजिक तत्वों की प्रत्येक गतिविधि पर ।	

(ग)	ततारा किनारे पर खड़ा वामीरों की था।	
	खंड – ग	
प्र.-8	निम्नलिखित प्रश्नों के उत्तर दीजिए	
(क)	लेखक ने व्यावहारिकता को समाज के लिए अच्छा क्यों नहीं माना ?	(2)
(ख)	समुद्र के गुस्से की वजह क्या थी ? उसने अपना गुस्सा कैसे निकाला?	(2)
(ग)	ततारा की तलवार के बारे में लोगों की क्या राय थी ?	(1)
	अथवा	
	कौंसिल की ओर से क्या नोटिस निकला ?	
प्र.-9	पाठ 'बड़े भाई साहब' के आधार पर छोटे भाई के व्यक्तित्व का चित्रण कीजिए।	(5)
	अथवा	
	वजीर अली सच्चे मायनो में जॉबाज सिपाही था – कथन की पुष्टि कीजिए ।	
प्र.-10	निम्नलिखित प्रश्नों के उत्तर दीजिए –	
(क)	बिहारी के दोहों के आधार पर स्पष्ट कीजिए कि सच्चे मन में ईश्वर बसते हैं?	(2)
(ख)	'सर पर कफन बाँधना' किस ओर संकेत करता है ?	(2)
(ग)	कवि ने तालाब की समानता किससे की है ?	(1)
	अथवा	
	मीरा श्रीकृष्ण के समीप रहने के लिए क्या करने को तैयार है?	
प्र.-11	'आत्मत्राण' कविता अन्य प्रार्थनाओं से किस प्रकार अलग है ?	(5)
	अथवा	
	कबीर के दोहों की प्रासंगिकता स्पष्ट कीजिए ।	
प्र.-12	'हरिहर काका' पाठ के आधार पर बताइए कि धर्म के नाम पर किस तरह साधारण जन की भावनाओं से खेला जाता है?	(5)
	अथवा	
	विद्यार्थियों को अनुशासन में रखने के लिए पाठ 'सपनों के से दिन' में अपनाई गई	

	युक्तियों और वर्तमान में स्वीकृत मान्यताओं के संबंध में विचार प्रकट कीजिए।	
	(खंड - घ)	
प्र.-13	निम्नलिखित में से किसी एक विषय पर 80-100 शब्दों में अनुच्छेद लिखिए प्लास्टिक की दुनिया - कृत्रिम पदार्थ प्रयोग गुण- अवगुण हानियाँ जिम्मेदारी ।	(5)
	कैसा शासन बिन अनुशासन - अनुशासन की आवश्यकता देश की वर्तमान स्थिति अनुशासनहीनता के कारण न्याय में देरी का समाधान ।	
	सपने में अंतरिक्ष की यात्रा - भूमिका अंतरिक्ष में पहुँचना भ्रमण का अनुभव वास्तविक स्थिति में वापसी ।	
प्र.-14	अपने सेवानिवृत्त पूर्व अध्यापक को उनकी उपलब्धियों की सराहना करते हुए धन्यवाद- ज्ञापन पत्र लिखिए ।	(5)
	अथवा	
	कक्षा के प्रतिनिधि होने के नाते गणित विषय को बेहतर करने के लिए कक्षा की तरफ से गणित विषय के लिए अतिरिक्त कक्षाओं की व्यवस्था के लिए प्रधानाचार्य को पत्र लिखिए ।	
प्र.-15	आप अपने विद्यालय में एन.सी.सी. के छात्र प्रतिनिधि हैं । गणतंत्र दिवस समारोह की परेड में हिस्सा लेने में इच्छुक छात्रों हेतु 25-30 शब्दों में सूचना तैयार कीजिए ।	(5)
	अथवा	
	आप विद्यालय के छात्र संघ के सचिव हैं । विद्यालय में मोबाइल निषेध है । इससे संबंधित सूचना जारी करते हुए 25-30 शब्दों में सूचना तैयार कीजिए ।	
प्र.-16	जलभराव की शिकायत लेकर गए नागरिक और नगर पालिका अध्यक्ष के बीच होने वाले संवाद को लगभग 50 शब्दों में लिखिए ।	(5)
	अथवा	
	एक घायल व्यक्ति को सड़क पर देखकर दो मित्रों के बीच होने वाले संवाद को लगभग 50 शब्दों में लिखिए।	
प्र.-17	कुछ व्यक्तिगत कारणों से आपने अपने नाम में कुछ बदलाव किए हैं, उससे संबंधित लगभग 50 शब्दों में एक विज्ञापन का आलेख तैयार कीजिए ।	(5)
	अथवा	
	गर्मियों की छुट्टियों में आपने एक नृत्य संस्थान खोला है । उससे संबंधित लगभग 50 शब्दों में एक विज्ञापन का आलेख तैयार कीजिए ।	

--	--	--

Class-X
Science-086
SAMPLE QUESTION PAPER-19

TIME: 3 Hrs.

M.M.:80

General Instructions:

- (i) The question paper comprises of five sections – A, B, C, D and E. You are to attempt all the sections.
- (ii) All questions are compulsory.
- (iii) Internal choice is given in sections B, C, D and E.
- (iv) Question numbers 1 and 2 in Section-A are one mark questions. They are to be answered in one word or in one sentence.
- (v) Question numbers 3 to 5 in Section- B are two marks questions. These are to be answered in about 30 words each.
- (vi) Question numbers 6 to 15 in Section-C are three marks questions. These are to be answered in about 50 words each.
- (vii) Question numbers 16 to 21 in Section-D are 5 marks questions. These are to be answered in about 70 words each.
- (viii) Question numbers 22 to 27 in Section- E are based on practical skills. Each question is a two marks question. These are to be answered in brief.

SECTION A

- 1. Name a common nutrient that is absorbed in the small intestine and reabsorbed by the kidney tubules. 1
- 2. The presence of a particular group of bacteria in water bodies indicates contamination. Identify the group. 1

SECTION B

- 3. How is Magnesium Chloride formed by the transfer of electrons? Why does the solution of Magnesium chloride conduct electricity? 2
- 4. In a flowering plant, summarize the events that take place after fertilization. 2
- 5. A ray of light enters into benzene from air. If the refractive index of benzene is 1.50, by what percent does the speed of light reduce on entering the benzene? 2

OR

For the same angle of incidence in media A,B and C, the angles of refraction are 20° , 30° and 40° respectively. In which medium will the velocity of light be maximum? Give reason in support of your answer.

6. What happens when aqueous solutions of Sodium sulphate and Barium chloride are mixed? Give a balanced equation for the reaction with state symbols. Name and define the type of chemical reaction involved in the above change. 2

SECTION C

7. Identify the compound of calcium which is used for plastering of fractured bones. With the help of chemical equation show how is it prepared and what special precautions should be taken during the preparation of this compound. 3

OR

‘Sweet tooth may lead to tooth decay’. Explain why? What is the role of tooth paste in preventing cavities?

8. The electronic configuration of an element ‘X’ is 2,8,6. To which group and period of the modern periodic table does ‘X’ belong. State its valency and justify your answer in each case. 3

9. Pertaining to endocrine system, what will you interpret if- 3

- i) You observe swollen neck in people living in the hills
- ii) Over secretion of Growth Hormone takes place during childhood
- iii) Facial hair develops in boys aged 13.

10. A variegated leaf with green and yellow patches is used for an experiment to prove that chlorophyll is required for photosynthesis. Before the experiment the green portions (A), and the pale yellow portions (B), are observed. What will be the colour of ‘A’ just before and after the starch test? Also write the equation of photosynthesis and mark, as well as validate from which molecule the by-product is obtained. 3

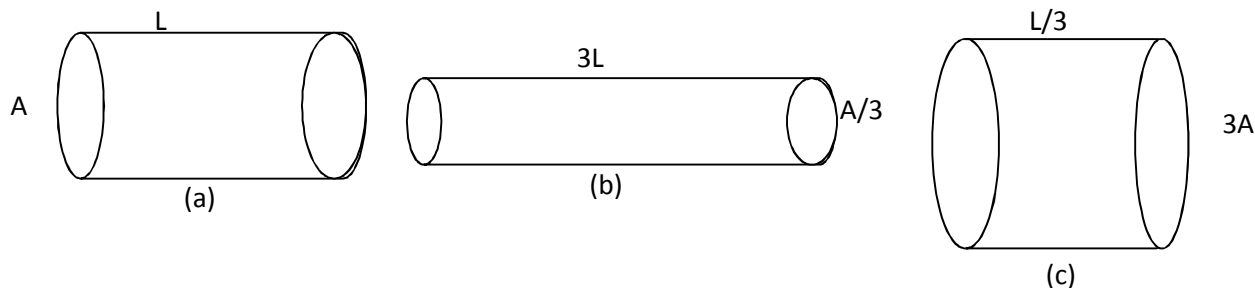
11. The image of an object formed by a mirror is real, inverted and is of magnification -1. If the image is at the distance of 30 cm from the mirror, where is the object placed? Find the position of the image if the object is now moved 20 cm towards the mirror. What is the nature of the image obtained? Justify your answer with the help of ray diagram. 3

OR

What is meant by power of a lens? You have three lenses L_1 , L_2 and L_3 of powers +10D, +5D and -10D respectively. State the nature and focal length of each lens. Explain which of the three lenses will form a virtual and magnified image of an object placed at 15 cm from the lens. Draw the ray diagram in support of your answer.

12. Two lamps, one rated 100 W at 220 V and the other 200 W at 220V are connected (i) in series and (ii) in parallel to electric main supply of 220V. Find the current drawn in each case. 3

13. The figure below shows three cylindrical copper conductors along with their face areas and lengths. Compare the resistance and the resistivity of the three conductors. Justify your answer. 3



3

14. What is biogas? Describe the steps involved in obtaining biogas. 3
15. How is ozone both beneficial and damaging? How can depletion of ozone layer be prevented? 3

OR

The flow of energy between various components of the environment has been extensively studied. List four findings.

SECTION D

16. a) How will you show experimentally that metals are good conductors of heat. 5
 b) Describe the extraction of Mercury metal from its ore Cinnabar (HgS).
17. A compound A ($\text{C}_2\text{H}_4\text{O}_2$) reacts with Na metal to form a compound 'B' and evolves a gas which burns with a pop sound. Compound 'A' on treatment with an alcohol 'C' in presence of an acid forms a sweet smelling compound 'D' ($\text{C}_4\text{H}_8\text{O}_2$). On addition of NaOH to 'D' gives back B and C. Identify A, B, C and D write the reactions involved. 5

OR

- a) Explain why carbon forms covalent bond? Give two reasons for carbon forming a large number of compounds.
- b) Explain the formation of ammonia molecule.

18. a) Draw the diagram of female reproductive system and match and mark the part(s): 5
 i) Where block is created surgically to prevent fertilization.
 ii) Where Copper-T is inserted?
 iii) Inside which condom can be placed.

- b) Why do more and more people prefer to use condoms? What is the principle behind use of condoms?

19. Name the phenomenon that governs the following: - 5
 i) Green beetles living in green bushes are not eaten by the crows.
 ii) Number of blue beetles in green bushes increases, only because the red beetles living there were trampled by a herd of elephants.

- iii) No 'medium height plants' are obtained in F₁ generation, upon crossing pure tall and dwarf pea plants.
- iv) Tails of mice were surgically removed for several generations; still mice had tails in the following generations.
- v) A migrant beetle reproduces with the local population; as a result genes of migrant beetle enter the new population.

OR

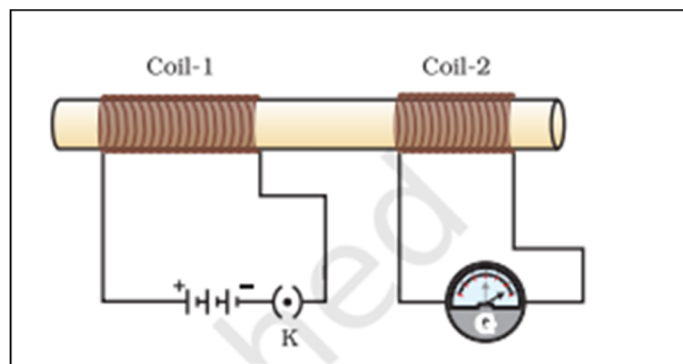
- a) What are fossils and how is age of fossils determined?
- b) During artificial selection, which features of wild cabbage were selected to give rise to i) Cabbage ii) Cauliflower

20. (a) What is meant by the term 'power of accommodation'? Name the component of eye that is responsible for the power of accommodation. 5

(b) A student sitting at the back bench in a class has difficulty in reading. What could be his defect of vision? Draw ray diagrams to illustrate the image formation of the blackboard when he is seated at the (i) back seat (ii) front seat. State two possible causes of this defect. Explain the method of correcting this defect with the help of a ray diagram.

21. (i) With the help of an activity, explain the method of inducing electric current in a coil with a moving magnet. State the rule used to find the direction of electric current thus generated in the coil. 5

(ii) Two circular coils-1 and coil-2 are kept close to each other as shown in the diagram. Coil-1 is connected to a battery and key and coil-2 with a galvanometer. State your observation in the galvanometer:



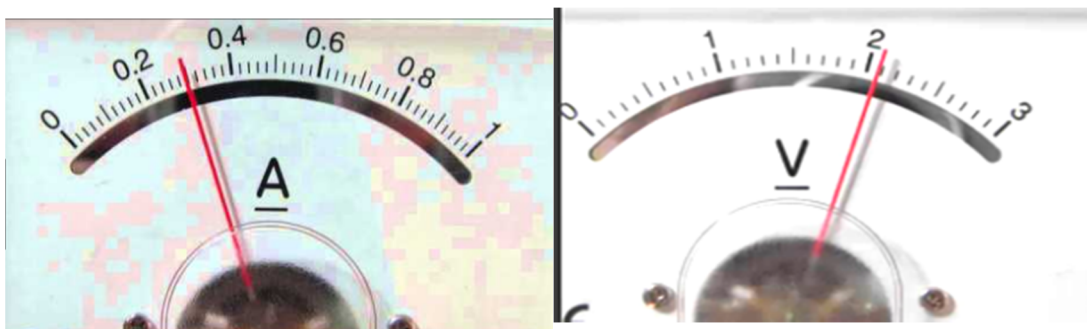
- (a) When key K closed ; (b) when key K is opened;
- Give reason for your observations.

OR

Name a device which converts mechanical energy into electrical energy. Explain the underlying principle and working of this device with the help of a labelled diagram.

SECTION E

22. When few drops of phenolphthalein are added to a dilute solution of sodium hydroxide a pink colour is produced.



2

What will be the colour of the final mixture when excess of HCl is added to it? (justify your answer)

OR

Arrange the metals iron, magnesium, zinc and copper in the increasing order of their reactivity.

What will be the two observations made by the student when iron filings are added to copper sulphate solution?

2

23. From an experiment to study the properties of acetic acid. Answer the following questions:

2

- Name the substances which on addition to acetic acid produce carbon dioxide gas. Give relevant chemical equation for the above?
- How is CO_2 gas tested in the laboratory?

24. When observed under high power of the microscope, 'chain of buds' is visible in the microscopic view. In which organism can it be observed? Explain the process.

OR

In the experimental set up on 'CO₂ is released during respiration,' if one forgets to keep the vial with KOH in the conical flask, how will the result vary? Give details.

2

25. You soak seeds of bean and observe them after 2-3 days. List four observations?

2

26. The current flowing through a resistor connected in an electrical circuit and the potential difference developed across its ends are shown in the given ammeter and voltmeter. Find the least count of the voltmeter and ammeter. What is the voltage and the current across the given resistor?

2

27. Consider the path of a ray of light passing through a rectangular glass slab for different angles of incidence. (i) Which one is greater: angle of incidence or angle of refraction? (ii) What happens to the emergent angle on increasing the incident angle at air-glass interface? (iii) State the conditions when no bending occurs.

2

OR

Sunita takes a mirror which is depressed at the centre and mounts it on a mirror stand. An erect and enlarged image of her face is formed. She places the mirror on a stand along a meter scale at 15 cm mark. In front of this mirror, she mounts a white screen and moves it back and forth along the meter scale till a sharp, well-defined inverted image of a distant tree is formed on the screen at 35 cm mark.

- (i) Name the mirror and find its focal length.
- (ii) Why does Sunita get sharp image of the distant building at 35 cm mark?

Class X
Home Science (064)
Sample Question Paper 2018-19

Time allowed: 3 Hours

Max. Marks: 75

General Instructions:

- (i) This question paper contains five sections A, B, C, D and E.
- (ii) In every section internal and external choice question is given.
- (iii) Questions No. 1 to 8 are of 1 mark each and to be answered in one word or one sentence each.
- (iv) Questions No. 9 to 16 are of 2 marks each and to be answered in approximately 20-30 words each.
- (v) Questions No. 17 to 19 are of 3 marks each and to be answered in approximately 30-50 words each.
- (vi) Questions No. 20 to 27 are of 4 marks each and to be answered in approximately 60-80 words each.
- (vii) Questions No. 28 to 32 are 5 marks each and to be answered in approximately 80-120 words each.

Section-A

Note- Attempt any 7 questions out of the given 8.

1. "The old age needs special care." Justify the statement with the help of one example. **1**

OR

List any two safety measures you will keep in mind for your old grandmother at home.

2. List any two common features of childhood. **1**
3. What will you do if an article is excessively blued in color? **1**

OR

Name any two cleaning agents which are used while washing clothes.

4. Define food hygiene. **1**

OR

Define Balanced diet.

5. What do you understand by the term dovetailing? **1**
6. What is RDA? **1**
7. Why is it important to sterilize dustbin? **1**
8. List any two factors affecting the safety of food at home. **1**

Section – B

Note- Attempt any 7 questions out of the given 8.

9. How does playing influence physical development of a child? Explain with two examples. 2

OR

“Play influences mental development of a child” Justify the statement with the help of two examples.

10. Write any four ways of reducing psychological fatigue. 2

OR

Write any four ways of reducing physical fatigue.

11. Explain any two reasons of saving money in our lives to your younger sister 2
12. How can you keep your kitchen free from pests? Write any four points. 2
13. Discuss any four points that you would consider while planning balanced diet for a family. 2
14. Expand FSSAI and draw its logo. 2
15. Define consumer education. List the name of any one government and one non- government agency providing consumer education. 2
16. Write any four characteristics of Adulthood. 2

Section – C

Note- Attempt any 2 questions out of the given 3.

17. Your mother has invited her friend for dinner. She wants to bring a variety in meals. Suggest any three ways of doing this to her. 3

OR

How do occupation, occasion and climate influence meal planning? Explain with the help of one example of each.

18. Ms. Singh found holes in her silk *saree* which was stored in a box during summer season. Give three possible reasons for it. Write three precautions which we should take to avoid this problem. 3
19. What is the difference between Heavy, Moderate and Light work? Give one example of each. 3

Section – D

Note- Attempt any 7 questions out of the given 8

20. Explain any four advantages of meal planning to your mother. 4
21. You want to gift a readymade pant to your father on his birthday. Write four points you will check to ensure its quality. 4

OR

What four points of workmanship will you check while buying your school blazer?

22. Your grandmother has purchased 1litre vegetable oil from a local vendor. Name any one adulterant which may be present in it. Also write its harmful effect on human body. Describe the two rules which she should follow while buying any food product from the market. 4
23. State four rules of hygiene which you should follow while serving food. 4

OR

State four rules of personal hygiene which you should follow while working in kitchen.

24. Which four precautions will you take while storing milk and milk products? 4
25. What four points will you observe regarding safety of a toy for two year old child? 4
26. Explain any four work simplification methods, with the help of suitable examples. 4
27. Guide your friend by detailing the procedure of removing old tea stain from white cotton shirt. Also guide him/her about the precautions to be followed while removing stains from any garment. 4

Section – E

Note- Attempt any 4 questions out of the given 5.

28. Write three common problems faced by your classmate and suggest two ways to deal with these problems. 5
29. What do you mean by family income? Differentiate between money income and real income. Give two examples of each. 5

OR

Explain three elements of family income with suitable example of each and also write two ways of increasing family income.

- 30.** What is therapeutic diet? Explain its types based on consistency with one example of each. **5**
Write any two advantages of using therapeutic diet.
- 31.** You have to prepare for your board examination. Make a time plan for a day for yourself. **5**
Write any two advantages of making a time plan.
- 32.** Plan a sample menu for a day for your family and specify each food group included in it. **5**
Name one major nutrient found in each food group.

CLASS X
SOCIAL SCIENCE (CODE 087)
SAMPLE QUESTION PAPER 2018-19

Time Allowed: 3 Hours

Maximum Marks: 80

General Instructions:

- a) The question paper is divided into four sections – Section A, Section B, Section C and Section D.
- b) The question paper has 26 questions in all.
- c) All questions are compulsory.
- d) Marks are indicated against each question.
- e) Questions from serial number 1 to 7 are very short answer type questions. Each question carries one mark.
- f) Questions from serial number 8 to 18 are 3 marks questions. Answer of these questions should not exceed 80 words each.
- g) Questions from serial number 19 to 25 are 5 marks questions. Answer of these questions should not exceed 100 words each.
- h) Question number 26 is a map question of 5 marks with two parts -26 A from History (2 marks) and 26 B from Geography (3 marks).

SECTION A

(1 X 7=7)

- 1 Why did Slavic nationalist struggle in the 19th century? Give one reason. 1

OR

 Why did France take up the idea of civilizing mission during mid- nineteenth century? Give one reason.

- 2 Why did Charles Dickens write about the terrible effects of industrialisation on people's lives and characters'? Give one reason. 1

OR

 Interpret any one fear in the minds of religious authorities and monarchs about the printed texts during 16th century in Europe.

- 3 "Conservation of resource is vital for development." Give one example regarding the statement. 1

OR

 "Degradation of land is a cause of worry." Give one reason to support the statement.

- 4 Recognize the form of power sharing which is represented by the Community Government in Belgium. 1

- 5 Why is money called a medium of exchange? 1
- OR**
- Why do banks ask for collateral while giving loans?
- 6 The MNC's of a country sets up a production jointly with the local company of other country. 1
State any one benefit of this joint production to the local company.
- 7 Suppose you buy a bag of cement for the purpose of repair work in your house, which logo or 1
mark will you look for?

SECTION B

(3 X 11=33)

- 8 Describe the ideology of liberalism during early 19th century. 3
- OR**
- Describe the role of Ho Chi Minh in the Vietnamese struggle for independence.
- 9 "Print culture created the conditions within which French Revolution occurred." Support the 3
statement with suitable arguments.
- OR**
- "Pariksha Guru is considered landmark in the history of Hindi novel." Justify the statement
with suitable arguments.
- 10 "Multi- purpose projects and large dams have come under great scrutiny." Identify the 3
problems caused by the setting up of these projects and dams.
- OR**
- "India is heading towards water scarcity." Trace the possible solutions to tackle this problem.
- 11 Establish the difference between Commercial farming and Subsistence farming with the help 3
of a suitable example.
- 12 State any three important features of Federalism. 3
- OR**
- State any three major steps taken by the Indian Government towards decentralization in 1992.
- 13 "In a democracy, political expression of social divisions is very normal and can be healthy." 3
Illustrate with suitable examples.
- 14 How is Democracy a better form of government when compared with dictatorship or any other 3
alternative government?
- 15 'Sustainable Development is a crucial step for the development of a country'. Explain with 3

suitable examples.

- 16 Why are formal sources of credit preferred over the informal source of credit? Give three reasons. 3

OR

Why is credit a crucial element in the economic development?

- 17 Critically examine the impact of globalization in India. 3

OR

Evaluate the role of MNCs in the economic development of a country.

- 18 “Consumer movement can be effective only with the consumer’s active involvement.” Keeping the statement in mind highlight the ways through which consumers can express their solidarity. 3

SECTION C

(5 X 7 = 35)

- 19 Describe the impact of Great Depression on Indian economy. 5

OR

Describe the impact of the First World war on Indian industries.

OR

Describe the effects of nineteenth century city development on ecology and environment?

- 20 The Civil Disobedience Movement saw the participation of different social classes and groups. Give reasons for the participation of the following: a) rich peasants b) poor peasants c) business classes d) industrial working classes e) women 5
1x5

OR

The middle classes played an important role in the Non-Cooperation Movement in the cities. Explain. Why do you think that the movement slowed down in the cities? 3+2

- 21 Why are maximum Jute textile mills located in the Hugli Basin? 5

- 22 “Advancement of international trade of a country is an index to its economic prosperity”. Elaborate with examples. 5

- 23 Mention any three forms in which communalism is expressed in politics. Describe the solution provided by the Constitution framers of India to meet this challenge? (3+2) 5

- 24 Illustrate the situations which display lack of internal democracy within a political party. 5

OR

Exhibit the role of money and muscle power among political parties during elections.

- 25 Show how tertiary sector has emerged as the largest producing sector in India. 5

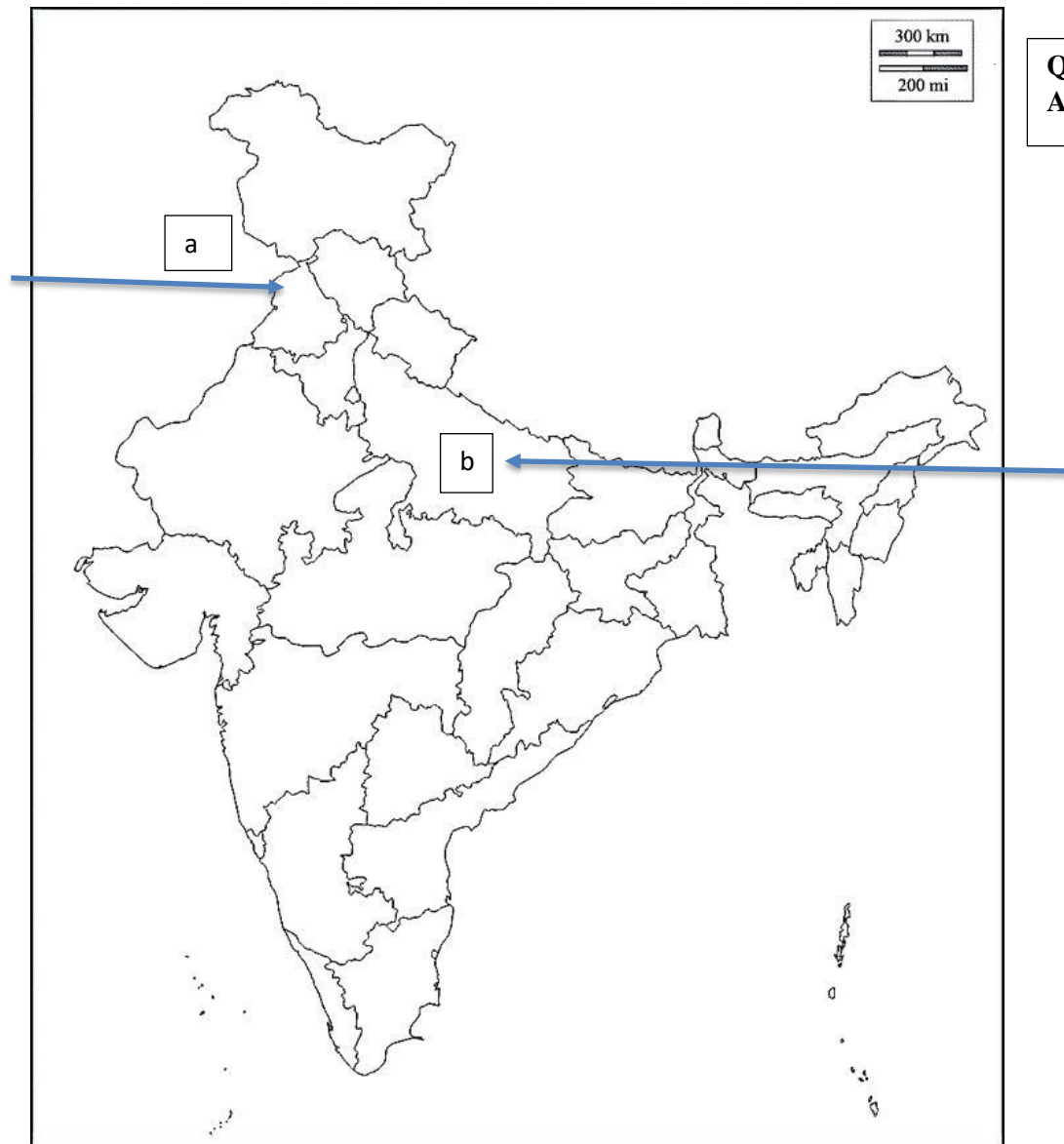
SECTION D**(1 X 5 = 5)**

- 26A Two places A and B are marked on the outline political map of India, identify these places with the help of following information and write their correct names on the lines marked near them: 2
+
3
=
5
- The place where Jallianwala Bagh massacre happened.
 - The place where Non- Cooperation Movement ended abruptly due to violence.
- 1X2 = 2

- 26B Locate and label **ANY THREE** of the following with appropriate symbols on the same given outline political map of India.
- Rawat Bhata Nuclear power plant
 - Chhatrapati Shivaji Airport
 - Bhadravati - Iron and Steel plant
 - Noida Software Technology Park
 - Vijaynagar Iron and Steel Industry
- 1X3 =3

Note: The following questions are for the **Visually Impaired candidates** only in lieu of Q. No. 26. **ANY FIVE to be attempted:** 1X5 =5

- Name the state where Indigo planters organized Satyagraha.
- Name the state where Non- Cooperation Movement ended abruptly due to violence.
- Name the state where Chhatrapati Shivaji Airport is located.
- Name the state where Bhadravati Iron and Steel Plant is located.
- Name the state where Rawat Bhata Nuclear Power Plant is located.
- Name the software technology park in Uttar Pradesh.
- Name the iron and steel plant in Karnataka.



QUESTION 26
A and 26 B

Class X
Mathematics
Sample Question Paper 2018-19

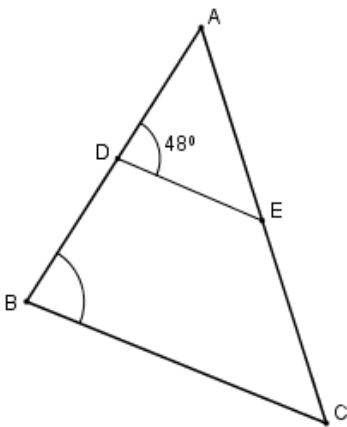
Time allowed: 3 Hours

Max. Marks: 80

General Instructions:

1. All the questions are compulsory.
2. The questions paper consists of 30 questions divided into 4 sections A, B, C and D.
3. Section A comprises of 6 questions of 1 mark each. Section B comprises of 6 questions of 2 marks each. Section C comprises of 10 questions of 3 marks each. Section D comprises of 8 questions of 4 marks each.
4. There is no overall choice. However, an internal choice has been provided in two questions of 1 mark each, two questions of 2 marks each, four questions of 3 marks each and three questions of 4 marks each. You have to attempt only one of the alternatives in all such questions.
5. Use of calculators is not permitted.

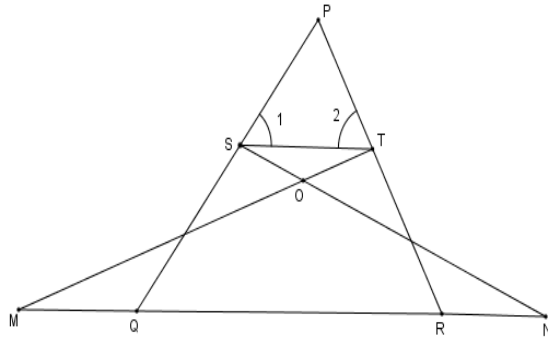
Section-A

1.	Find the value of a, for which point P ($\frac{a}{3}$, 2) is the mid-point of the line segment joining the points Q(-5,4) and R(-1,0).	1
2.	Find the value of k, for which one root of the quadratic equation $kx^2 - 14x + 8 = 0$ is 2.	1
	OR	
	Find the value(s) of k for which the equation $x^2 + 5kx + 16 = 0$ has real and equal roots.	
3.	Write the value of $\cot^2\theta - \frac{1}{\sin^2\theta}$	1
	OR	
	If $\sin\theta = \cos\theta$, then find the value of $2\tan\theta + \cos^2\theta$	
4.	If nth term of an A.P. is $(2n+1)$, what is the sum of its first three terms?	1
5.	In figure if AD= 6cm, DB=9cm, AE = 8cm and EC = 12cm and $\angle ADE = 48^\circ$. Find $\angle ABC$	1
		
6.	After how many decimal places will the decimal expansion of $\frac{23}{2^4 \times 5^3}$ terminate?	1

Section-B		
7.	The HCF and LCM of two numbers are 9 and 360 respectively. If one number is 45, find the other number.	2
	OR	
	Show that $7 - \sqrt{5}$ is irrational, give that $\sqrt{5}$ is irrational.	
8.	Find the 20 th term from the last term of the AP 3,8,13,...,253	2
	OR	
	If 7 times the 7 th term of an A.P is equal to 11 times its 11 th term, then find its 18 th term.	
9.	Find the coordinates of the point P which divides the join of A(-2,5) and B(3,-5) in the ratio 2:3	2
10.	A card is drawn at random from a well shuffled deck of 52 cards. Find the probability of getting neither a red card nor a queen.	2
11.	Two dice are thrown at the same time and the product of numbers appearing on them is noted. Find the probability that the product is a prime number	2
12.	For what value of p will the following pair of linear equations have infinitely many solutions $(p-3)x+3y = p$ $px+py = 12$	2
Section-C		
13.	Use Euclid's Division Algorithm to find the HCF of 726 and 275.	3
14.	Find the zeroes of the following polynomial: $5\sqrt{5}x^2+30x+8\sqrt{5}$	3
15.	Places A and B are 80 km apart from each other on a highway. A car starts from A and another from B at the same time. If they move in same direction they meet in 8 hours and if they move towards each other they meet in 1 hour 20 minutes. Find the speed of cars.	3
16.	The points A(1,-2) , B(2,3), C (k,2) and D(-4,-3) are the vertices of a parallelogram. Find the value of k.	3
	OR	
	Find the value of k for which the points (3k-1,k-2), (k,k-7) and (k-1,-k-2) are collinear.	
17.	Prove that $\cot\theta - \tan\theta = \frac{2\cos^2\theta-1}{\sin\theta\cos\theta}$	3
	OR	
	Prove that $\sin\theta(1 + \tan\theta) + \cos\theta(1 + \cot\theta) = \sec\theta + \operatorname{cosec}\theta$	
18.	The radii of two concentric circles are 13 cm and 8 cm. AB is a diameter of the bigger circle and BD is a tangent to the smaller circle touching it at D and intersecting the larger circle at P on producing. Find the length of AP.	3

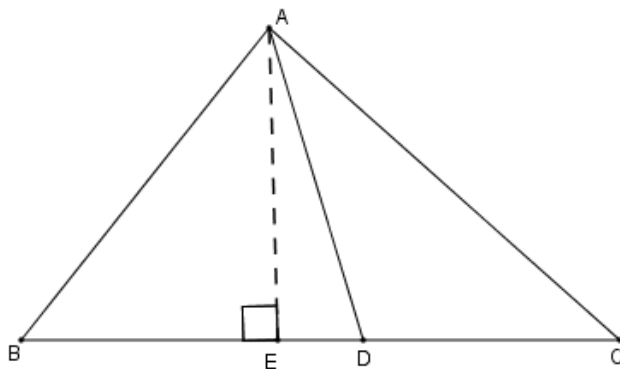
19. In figure $\angle 1 = \angle 2$ and $\Delta NSQ \cong \Delta MTR$, then prove that $\Delta PTS \sim \Delta PRQ$.

3



OR

In ΔABC , if AD is the median, then show that $AB^2 + AC^2 = 2(AD^2 + BD^2)$



20. Find the area of the minor segment of a circle of radius 42cm, if length of the corresponding arc is 44cm.

3

21. Water is flowing at the rate of 15 km per hour through a pipe of diameter 14cm into a rectangular tank which is 50 m long and 44 m wide. Find the time in which the level of water in the tank will rise by 21 cm.

3

OR

A solid sphere of radius 3 cm is melted and then recast into small spherical balls each of diameter 0.6cm. Find the number of balls.

22. The table shows the daily expenditure on grocery of 25 households in a locality. Find the modal daily expenditure on grocery by a suitable method.

3

Daily Expenditure (in Rs.)	100-150	150-200	200-250	250-300	300-350
No of households	4	5	12	2	2

Section-D																									
23.	A train takes 2 hours less for a journey of 300km if its speed is increased by 5 km/h from its usual speed. Find the usual speed of the train.	4																							
	OR																								
	Solve for x: $\frac{1}{(a+b+x)} = \frac{1}{a} + \frac{1}{b} + \frac{1}{x}$, [a ≠ 0, b ≠ 0, x ≠ 0, x ≠ -(a + b)]																								
24.	An AP consists of 50 terms of which 3 rd term is 12 and the last term is 106. Find the 29 th term.	4																							
25.	Prove that in a right angled triangle square of the hypotenuse is equal to sum of the squares of other two sides.	4																							
26.	Draw a ΔABC with sides 6cm, 8cm and 9 cm and then construct a triangle similar to ΔABC whose sides are $\frac{3}{5}$ of the corresponding sides of ΔABC .	4																							
27.	A man on the top of a vertical observation tower observes a car moving at a uniform speed coming directly towards it. If it takes 12 minutes for the angle of depression to change from 30 ⁰ to 45 ⁰ , how long will the car take to reach the observation tower from this point?	4																							
	OR																								
	The angle of elevation of a cloud from a point 60 m above the surface of the water of a lake is 30 ⁰ and the angle of depression of its shadow from the same point in water of lake is 60 ⁰ . Find the height of the cloud from the surface of water.																								
28.	The median of the following data is 525. Find the values of x and y if the total frequency is 100.		4																						
	<table><tr><th>Class Interval</th><th>Frequency</th></tr><tr><td>0-100</td><td>2</td></tr><tr><td>100-200</td><td>5</td></tr><tr><td>200-300</td><td>x</td></tr><tr><td>300-400</td><td>12</td></tr><tr><td>400-500</td><td>17</td></tr><tr><td>500-600</td><td>20</td></tr><tr><td>600-700</td><td>Y</td></tr><tr><td>700-800</td><td>9</td></tr><tr><td>800-900</td><td>7</td></tr><tr><td>900-1000</td><td>4</td></tr></table>			Class Interval	Frequency	0-100	2	100-200	5	200-300	x	300-400	12	400-500	17	500-600	20	600-700	Y	700-800	9	800-900	7	900-1000	4
	Class Interval	Frequency																							
	0-100	2																							
	100-200	5																							
	200-300	x																							
	300-400	12																							
	400-500	17																							
	500-600	20																							
	600-700	Y																							
	700-800	9																							
	800-900	7																							
	900-1000	4																							

	OR																								
	The following data indicates the marks of 53 students in Mathematics.																								
	<table><tr><th>Marks</th><th>Number of students</th></tr><tr><td>0-10</td><td>5</td></tr><tr><td>10-20</td><td>3</td></tr><tr><td>20-30</td><td>4</td></tr><tr><td>30-40</td><td>3</td></tr><tr><td>40-50</td><td>4</td></tr><tr><td>50-60</td><td>4</td></tr><tr><td>60-70</td><td>7</td></tr><tr><td>70-80</td><td>9</td></tr><tr><td>80-90</td><td>7</td></tr><tr><td>90-100</td><td>8</td></tr></table>	Marks	Number of students	0-10	5	10-20	3	20-30	4	30-40	3	40-50	4	50-60	4	60-70	7	70-80	9	80-90	7	90-100	8		
Marks	Number of students																								
0-10	5																								
10-20	3																								
20-30	4																								
30-40	3																								
40-50	4																								
50-60	4																								
60-70	7																								
70-80	9																								
80-90	7																								
90-100	8																								
	Draw less than type ogive for the data above and hence find the median.																								
29.	The radii of circular ends of a bucket of height 24 cm are 15 cm and 5 cm. Find the area of its curved surface.	4																							
30.	If $\sec\theta + \tan\theta = p$, then find the value of $\operatorname{cosec}\theta$.	4																							