



Doodle Page Digital Download

This PDF file contains 1 (one) Doodle Page. The PDF has been put together to give you options when it comes to printing. Pages and patterns that are larger than 8½x11 have been provided in two formats:



1) Full Size

If you would like to have a full size print out, take the full size pages to your local print shop and they can print it for you. All full size Doodle Pages are 11x17



2) Tiled

The tiled pages give you the option of printing the full sized Doodle Pages at home. You print the tiled pages and then assemble them to make the larger patterns.

The Doodle Page PDF files are typically laid out like this:

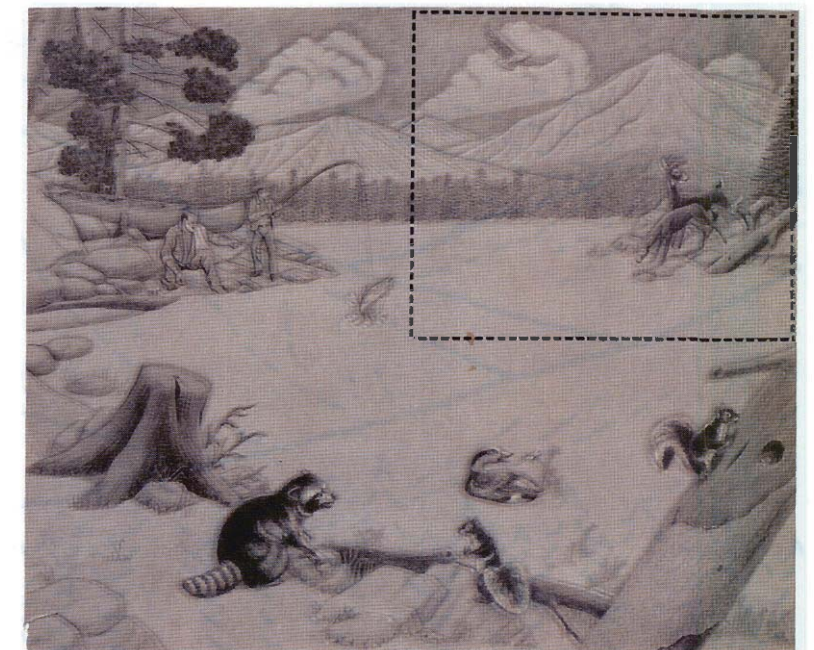
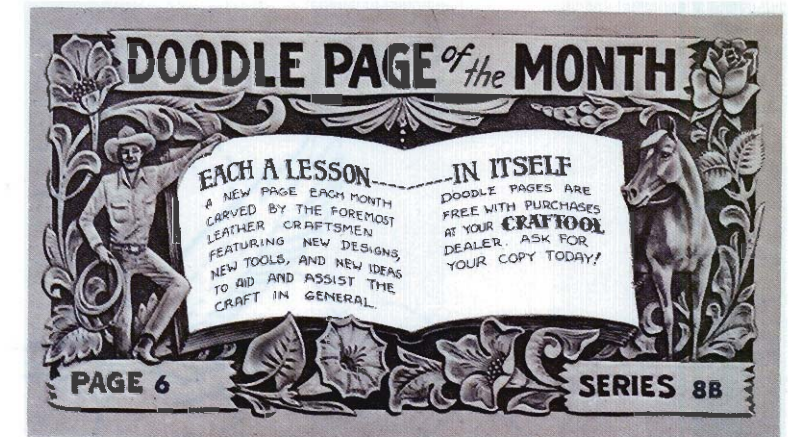
Front – full sized, front – tiled, back – full sized, back – tiled

(Some Doodle Pages do not have backs)

Please note: When printing on a home printer, the edges may get cut off. To avoid this, make sure “Page Scaling” is set to “Shrink to Printable Area” in the Adobe Reader print dialogue box. This will decrease the size of the Doodle Page a very small amount.



You may take this PDF file to your local print shop to have the full-size pages printed for your own personal use.



"ADVENTURE WITH NATURE" by Gene Noland

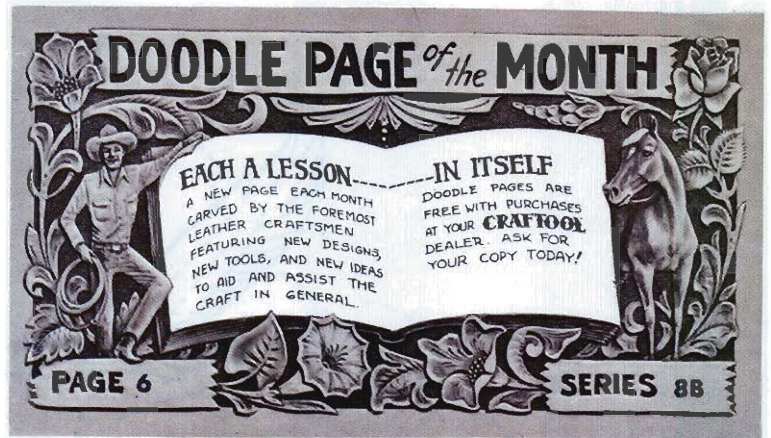
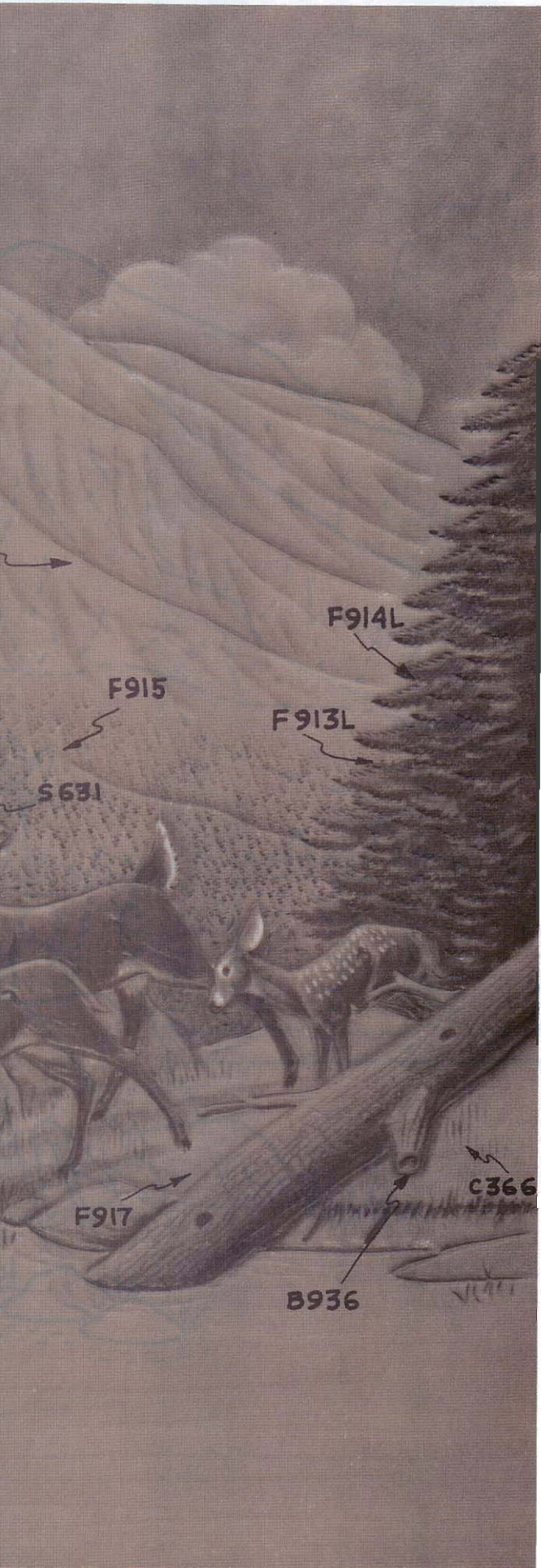
This is the second of a four part series that will make the picture shown above when completed. The animals in nature are the most fascinating creatures upon the face of the earth. I often think how wonderful it would be to be able to walk up to an animal without it being afraid of man. This Adventure with Nature is the closest I can come to being able to be a part of it.

Different sections of the above picture can be used to make different horizontal or vertical pictures (see suggestion on the reverse side). The left or right half of the picture can be used as a scene or the upper or lower half can be used for a separate scene.

The Tracing Pattern for this month's page is on the reverse side. Trace all the lines, including the dotted lines. However, when cutting . . . cut

(Continued on reverse side)





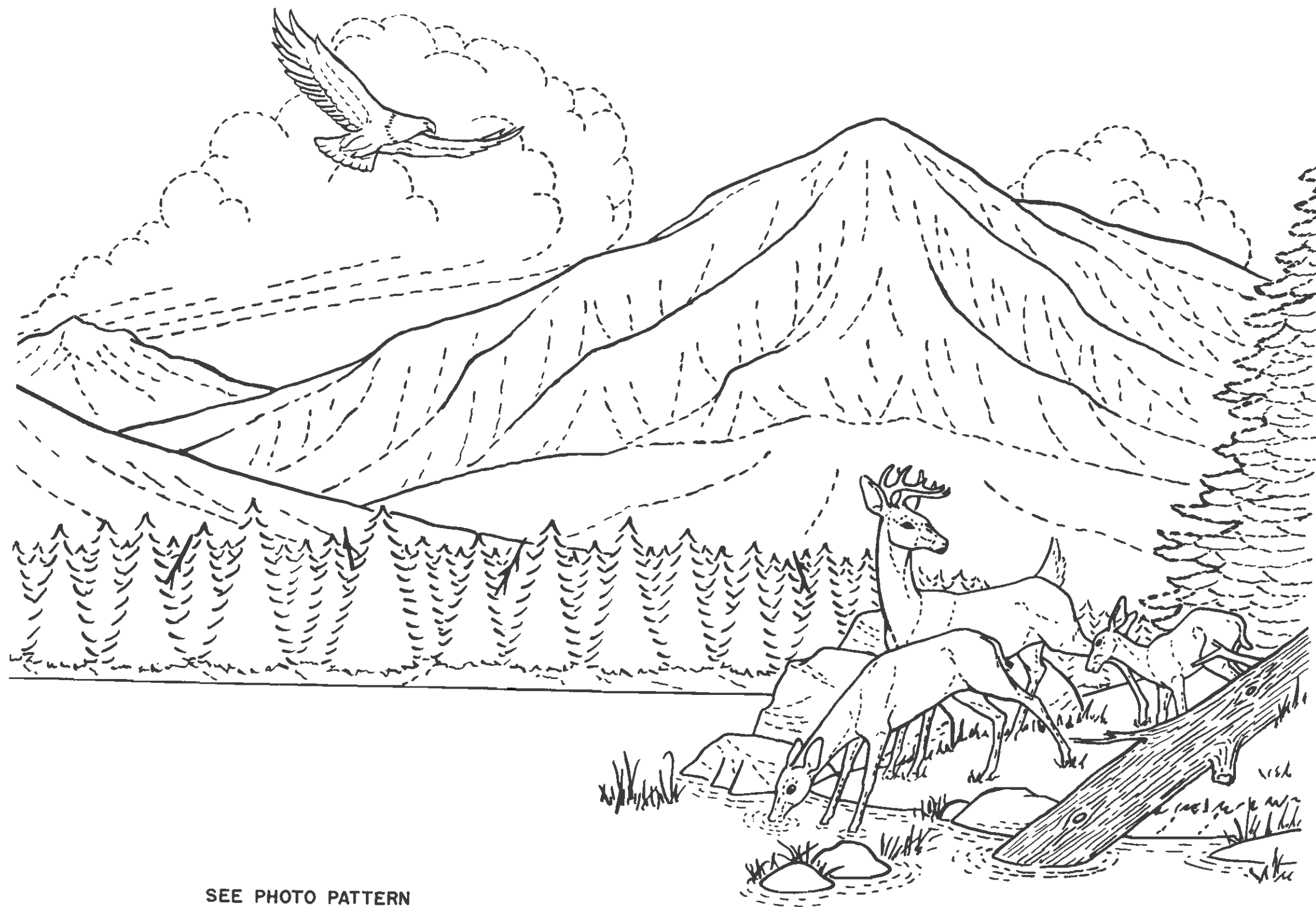
"ADVENTURE WITH NATURE" by Gene Noland

This is the second of a four part series that will make the picture shown above when completed. The animals in nature are the most fascinating creatures upon the face of the earth. I often think how wonderful it would be to be able to walk up to an animal without it being afraid of man. This Adventure with Nature is the closest I can come to being able to be a part of it.

Different sections of the above picture can be used to make different horizontal or vertical pictures (see suggestion on the reverse side). The left or right half of the picture can be used as a scene or the upper or lower half can be used for a separate scene.

The Tracing Pattern for this month's page is on the reverse side. Trace all the lines, including the dotted lines. However, when cutting . . . cut

(Continued on reverse side)



SEE PHOTO PATTERN
FOR WATER EFFECTS

6000



only the solid lines, except those on the fallen log. The dotted lines are used as guides for beveling and modeling. You will note that the fir tree behind the fawn is composed of all dotted lines. None of the lines on this tree should be cut. The tree is then tooled with the new "pine tree" tools for the needle effect of the branches. For best results obtain a copy of PICTORIAL CARVING. This book gives step-by-step instructions on how to make all of these trees.

The trees in the background are stamped in a different manner, but they are also found in the above mentioned book. I still find, however, that I get more depth by accenting the branches with #F976 then using #F912-R & #F912-L to achieve the pine tree effect.

Study the Photo Pattern closely to see how these tools form a manner of realism. For the distant trees I used #A104 and for the trees in the far distance I used #F915. Again I used the swivel knife to cut the tall grass around the rocks and in the water.

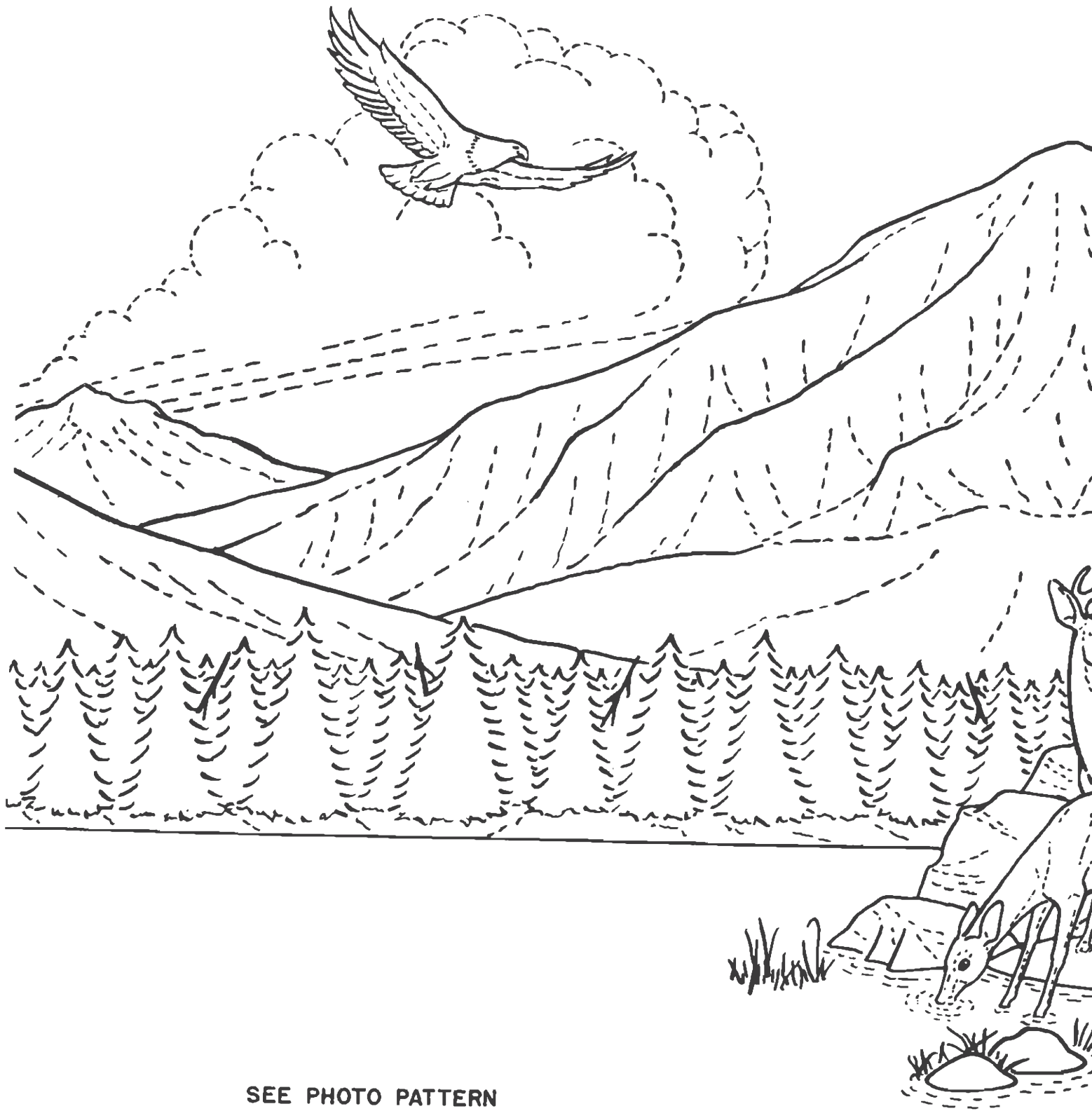
Your modeling tool is one of the most important tools in figure carving. On the deer I used the hair blade #100M following the contour of each animal. Study the Photo Pattern carefully and don't be afraid to try your hand at figure carving.

**Ask Your CRAFTOOL DEALER
About These New Patterns**

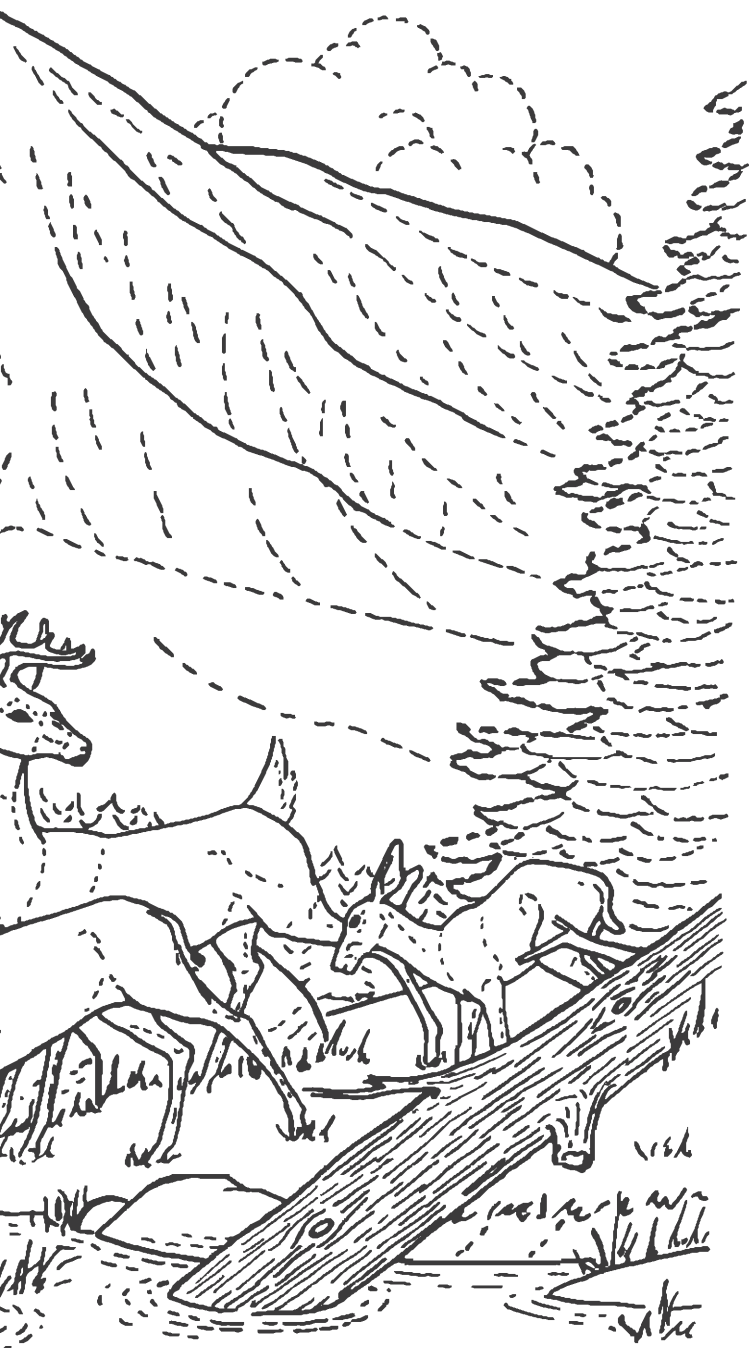
#6001 — #6002 — #6003

**CRAFTTOOLS USED
ON THIS DESIGN**

B198 B199 B197 B201 B203 B205 B702 B936
C366 A104 S631 S932 V745 F941 F976 F915
F917 F934 F899 F898 F914-L F913-L F912-R
F912-L F899 Modeler No. 3 Hair Blade 100M



SEE PHOTO PATTERN
FOR WATER EFFECTS



only the solid lines, except those on the fallen log. The dotted lines are used as guides for beveling and modeling. You will note that the fir tree behind the fawn is composed of all dotted lines. None of the lines on this tree should be cut. The tree is then tooled with the new "pine tree" tools for the needle effect of the branches. For best results obtain a copy of PICTORIAL CARVING. This book gives step-by-step instructions on how to make all of these trees.

The trees in the background are stamped in a different manner, but they are also found in the above mentioned book. I still find, however, that I get more depth by accenting the branches with #F976 then using #F912-R & #F912-L to achieve the pine tree effect.

Study the Photo Pattern closely to see how these tools form a manner of realism. For the distant trees I used #A104 and for the trees in the far distance I used #F915. Again I used the swivel knife to cut the tall grass around the rocks and in the water.

Your modeling tool is one of the most important tools in figure carving. On the deer I used the hair blade #100M following the contour of each animal. Study the Photo Pattern carefully and don't be afraid to try your hand at figure carving.

**Ask Your CRAFTOOL DEALER
About These New Patterns**

#6001 — #6002 — #6003

CRAFTOOLS USED ON THIS DESIGN

B198 B199 B197 B201 B203 B205 B702 B936
C366 A104 S631 S932 V745 F941 F976 F915
F917 F934 F899 F898 F914-L F913-L F912-R
F912-L F899 Modeler No. 3 Hair Blade 100M

©BND