

# BASKETWEAVE PRIMER

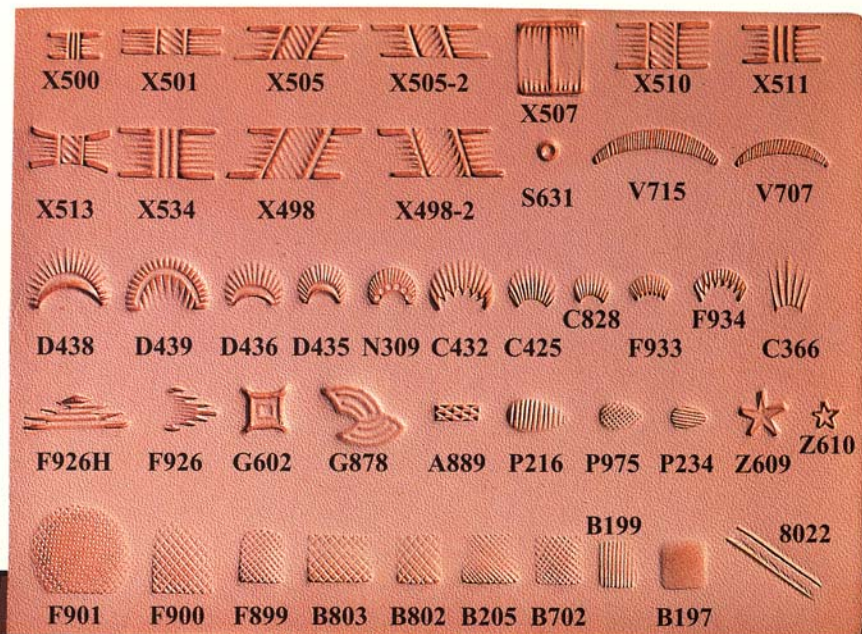


A BASIC GUIDE TO VARIOUS  
BASKETWEAVE TECHNIQUES



Copyright 2008  
Tandy Leather Factory  
All Rights Reserved  
Unauthorized duplication or distribution is prohibited.

Craftool® Stamps and Tools shown  
 on this page were all used  
 in the designs in this book.



The basket and geometric tools can be used for many decorative purposes. They are fast and easy to use, and have many design possibilities. They are very effective when combined with traditional floral designs and are just as effective when used to create a solid geometric design. Practice on scraps of leather and enjoy the tools, the more you practice the more comfortable you will become using them. As with everything else, the more you practice the better you will get.

The following pages contain many varied designs using different basketweave stamps and a variety of border designs. Use different combinations of tools to achieve the effect you desire. We have by no means shown all of the available stamps or techniques, but instead tried to show enough different examples to get your imagination churning. This type of stamping is just down right fun to play with. As you play you will also begin to get comfortable with the properties of veg-tanned leather, and it's versatility in accepting designs. There are hundreds of leather stamps available and geometrics represent a small portion of those.

*Previous page:* The samples in this book were done using the stamps shown here. Other tools shown are necessities for the serious leather crafter. A square (for a good straight edge), a poly-head or rawhide mallet (long lasting and solid), rubber cement (used to temporarily bond backing to leather to prevent stretching while tooling), marble slab (solid tooling surface allows deeper stamping and less tool bouncing), wing divider (used to mark border lines and stitching lines equal distances from the edges), swivel knife (for cutting through surface of leather, a must for more advanced tooling techniques), and a ball point stylus (for tracing patterns on leather and scribing guide lines).

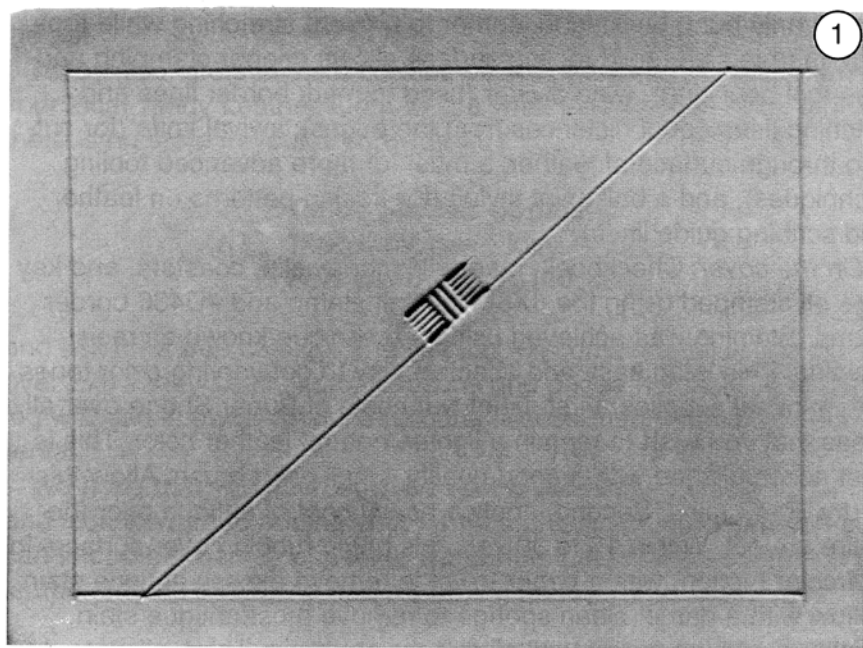
*On the cover:* Checkbook, magnetic money clip, coasters, and key fobs all stamped using the #X511 basket stamp and #D436 border stamp. Staining was achieved using a technique known as resist staining. This is an easy and effective way to get varying color tones with minimal supplies. First, paint two coats of Super Shene over all areas that you wish to remain a lighter, natural leather color. This is best accomplished with a good quality, small paint brush. Allow this to dry 30-45 mins. Second, apply a heavy coat of antique over the entire project. Within 15 to 30 seconds begin rubbing over surface, in a circular motion, with a paper towel to remove excess antique stain. Follow with a damp, clean sponge to remove most antique stain. Continue rubbing gently until all streaks are gone. Third, allow to dry 15-20 mins. and apply final coat of Super Shene to seal antique and protect surface of leather.

**Step 1.** Scribe border lines around project. Scribe a line diagonally across area to be tooled. Stamp basket tool in the center of the project, on top edge of line. (Ex. 1)

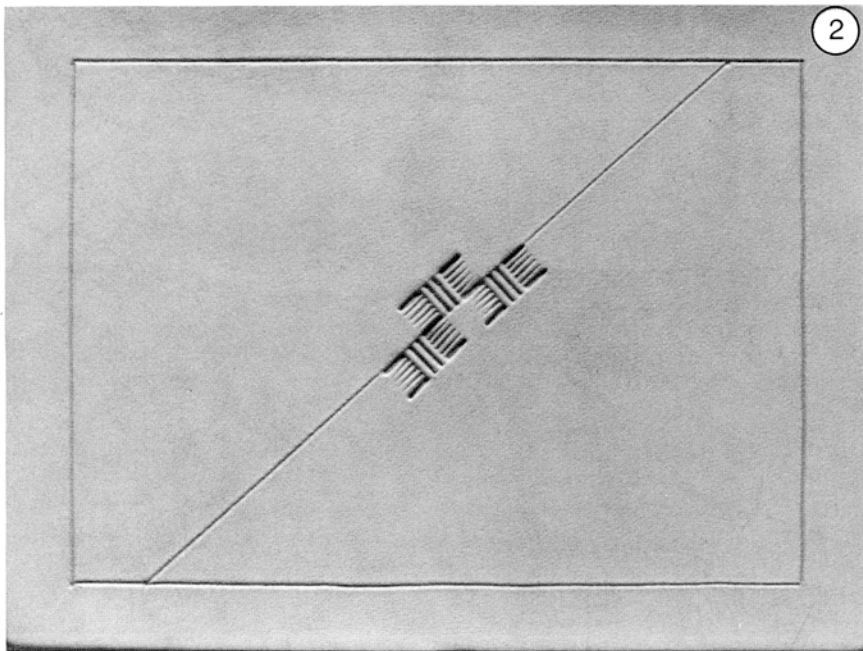
**Step 2.** Stamp second and third impressions below the line. Slightly overlap ends of tool impressions to the left and right of first stamping. (Ex. 2)

**Step 3.** Continue stamping to the right of first stamping going from top to bottom of line. Repeat to left of first impression. (Ex. 3)

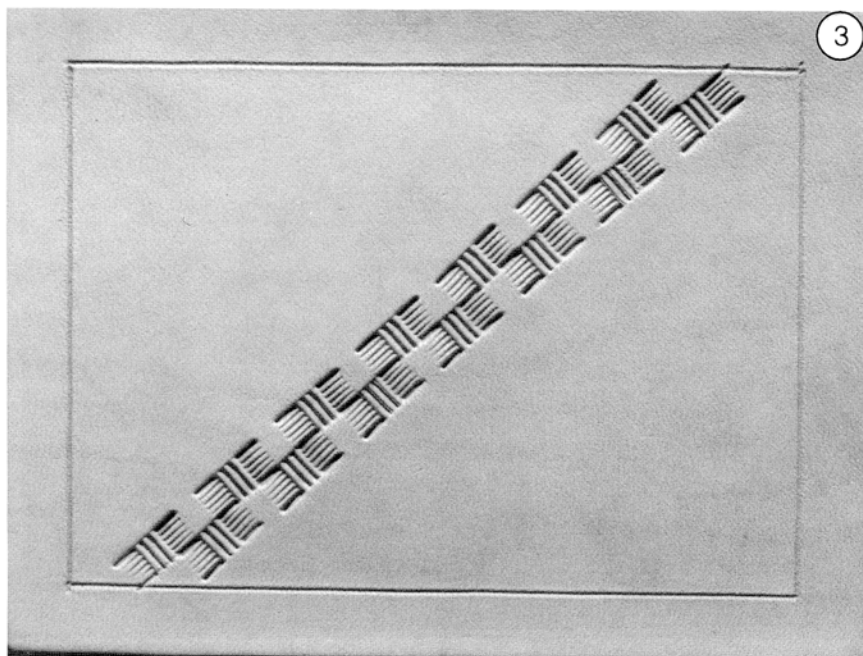
**Tip:** For best results use heavy marble surface under tooling leather to achieve deeper impressions.

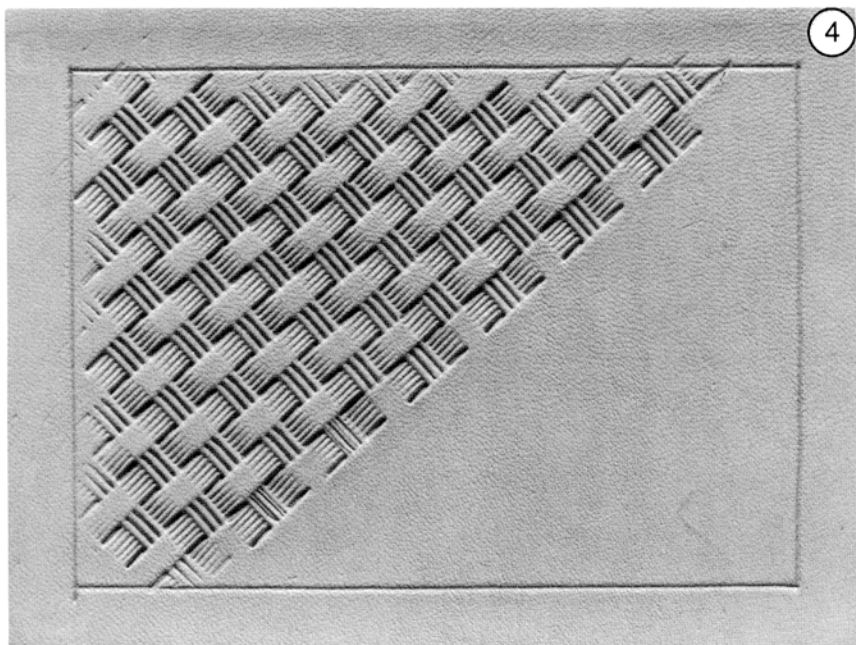


2

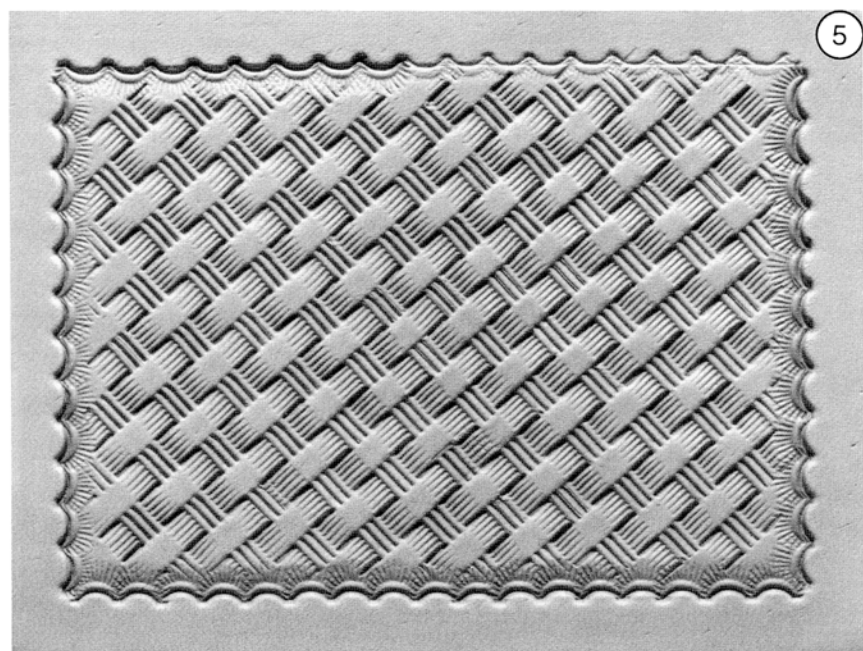


3



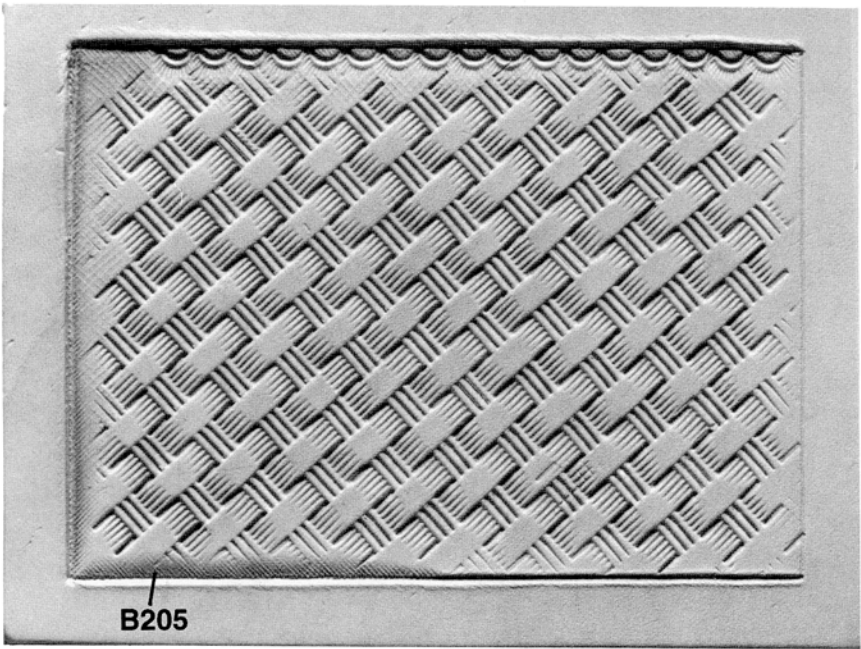


**Step 4.** Fill in upper portion of tooling space. (Ex. 4)



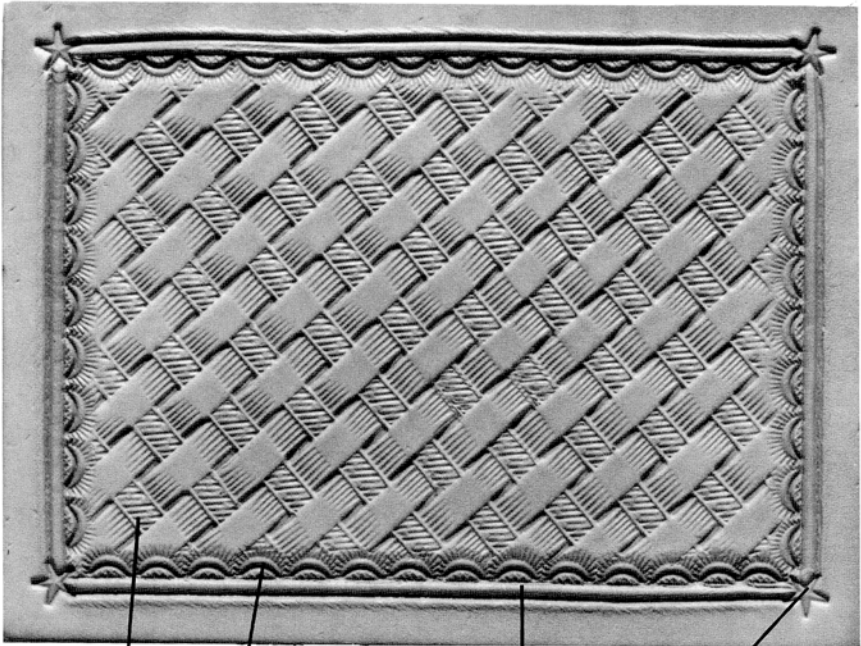
**Step 5.** Fill in lower portion of tooling space. With border tool, stamp over scribed border going all around the project. (Ex. 5)

4



B205

Same design as the previous except the border is cut (with swivel knife) and beveled before stamping with the border tool.

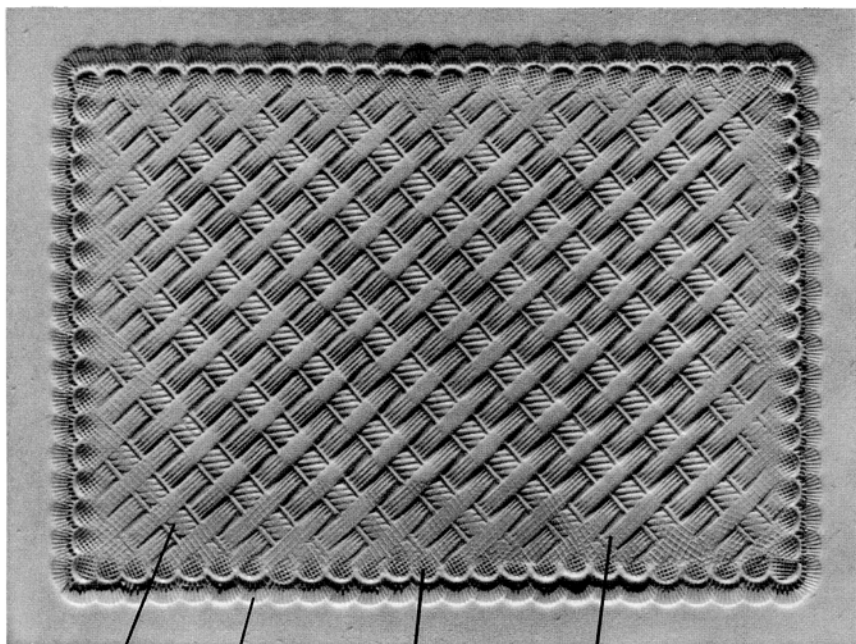


X510

D436

8022

Z609

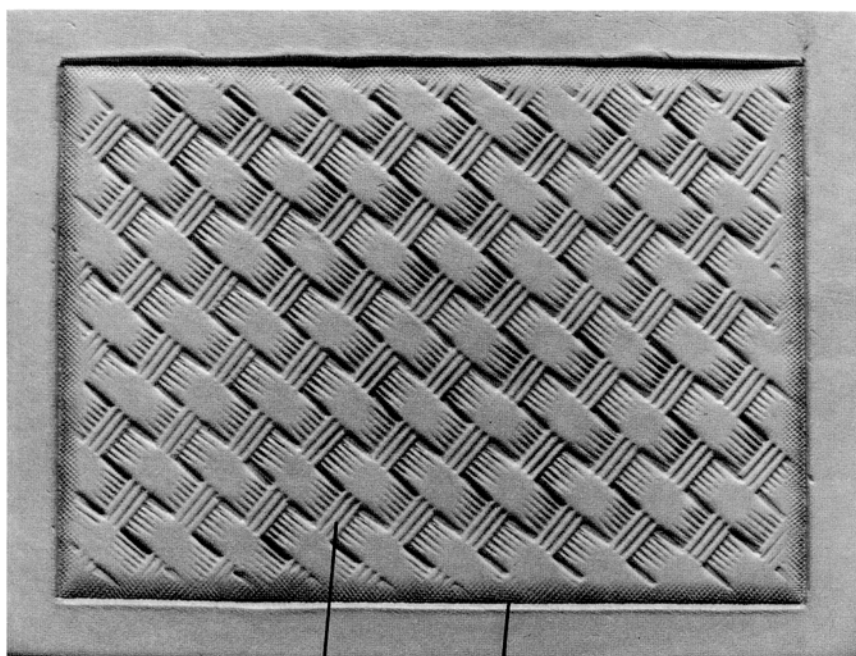


X501

F933

P975

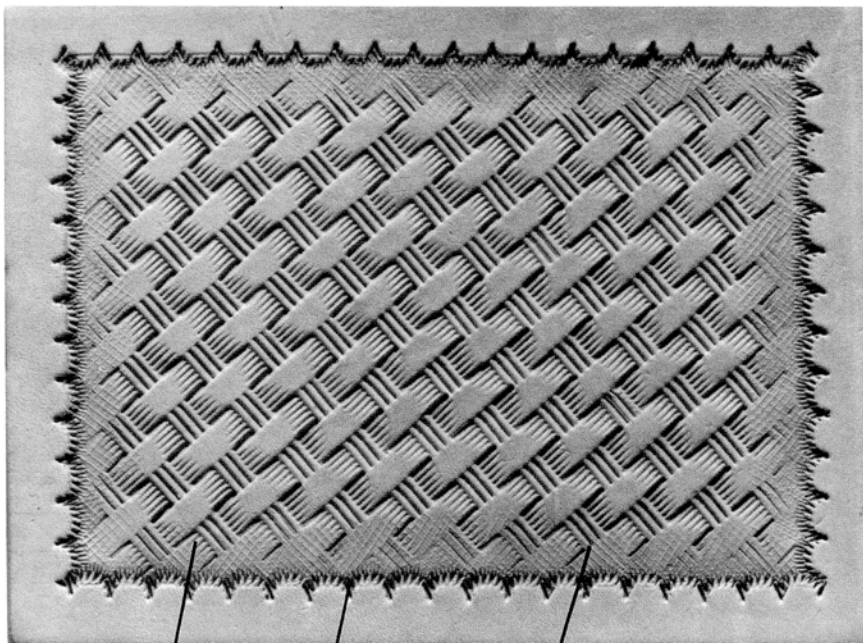
F901



X534

B205

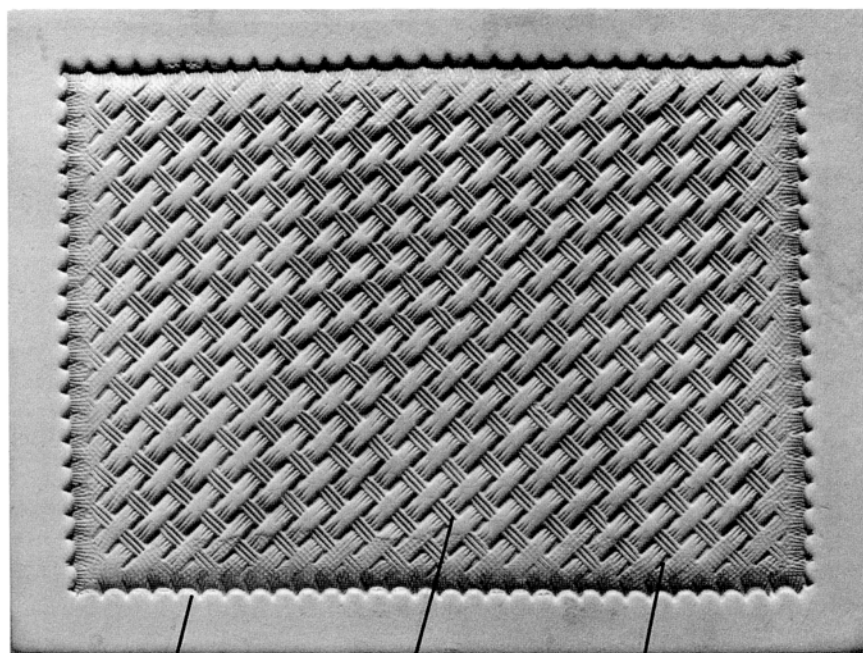




X511

F934

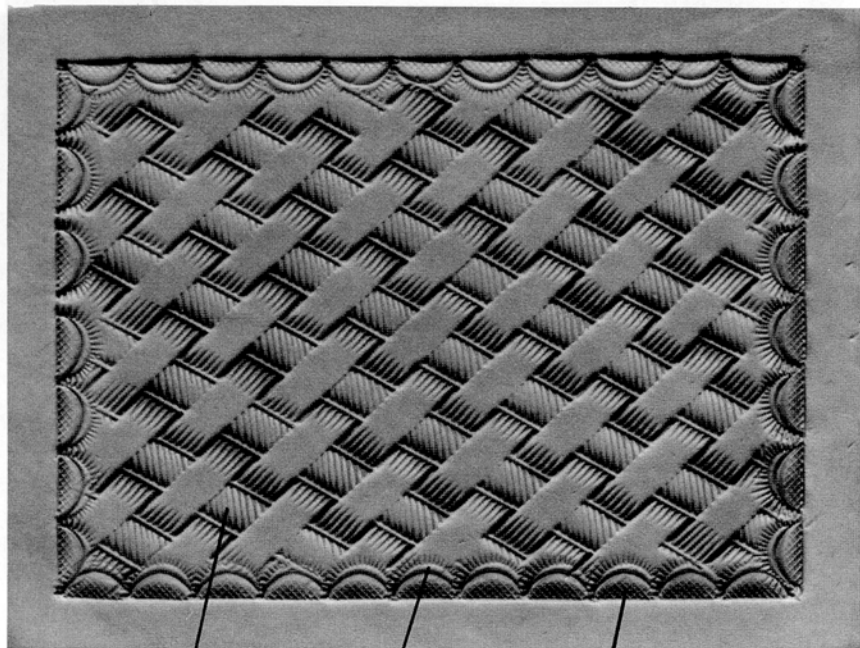
F900



C828

X500

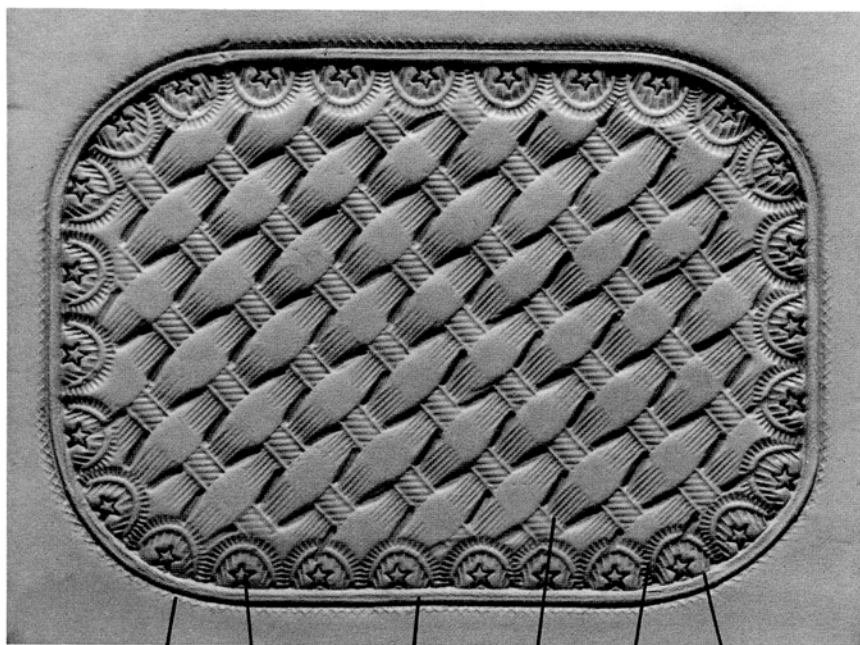
F899



X498-2

D438

B803



B803

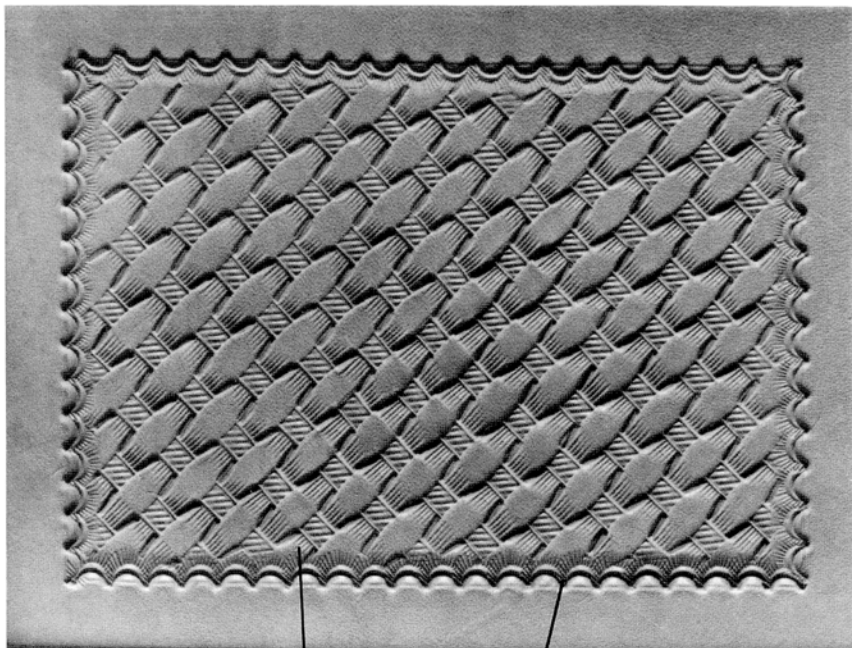
Z610

8022

X513

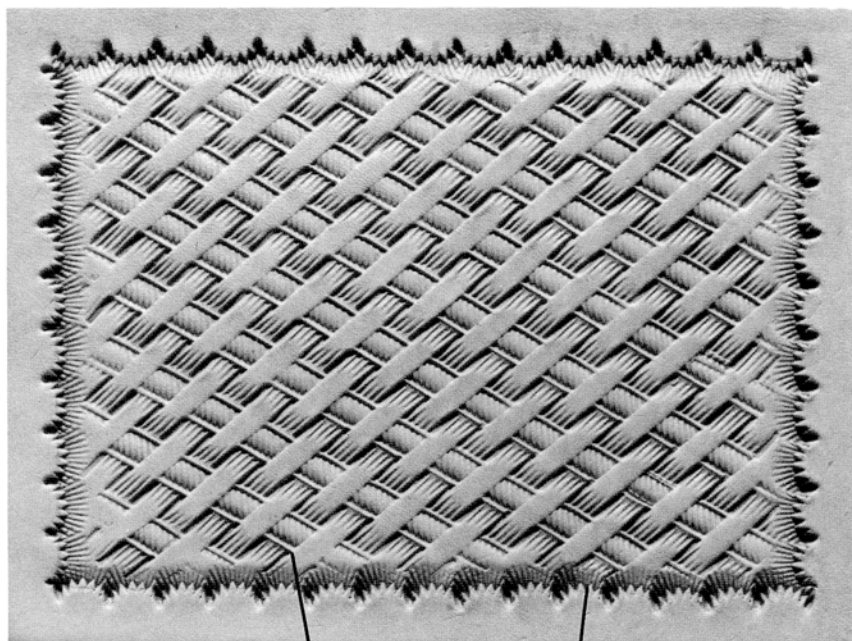
D439

B197



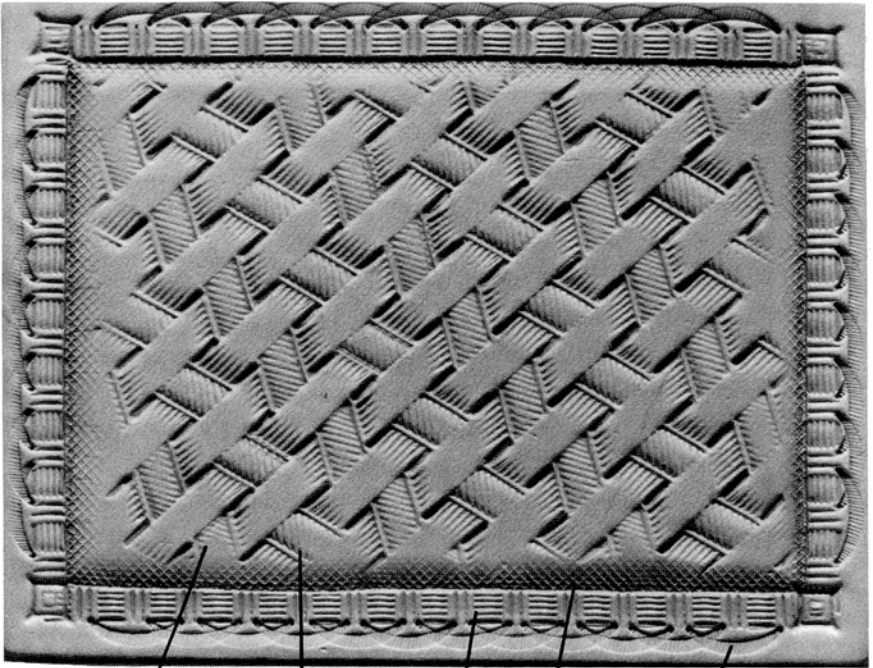
X513

D435



X505-2

C432



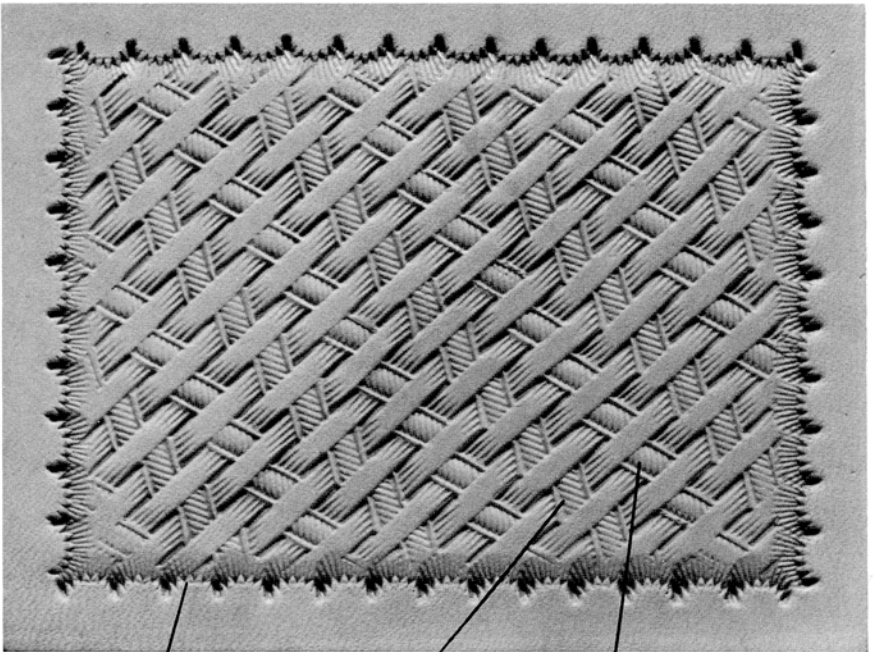
X498

X498-2

X511

B803

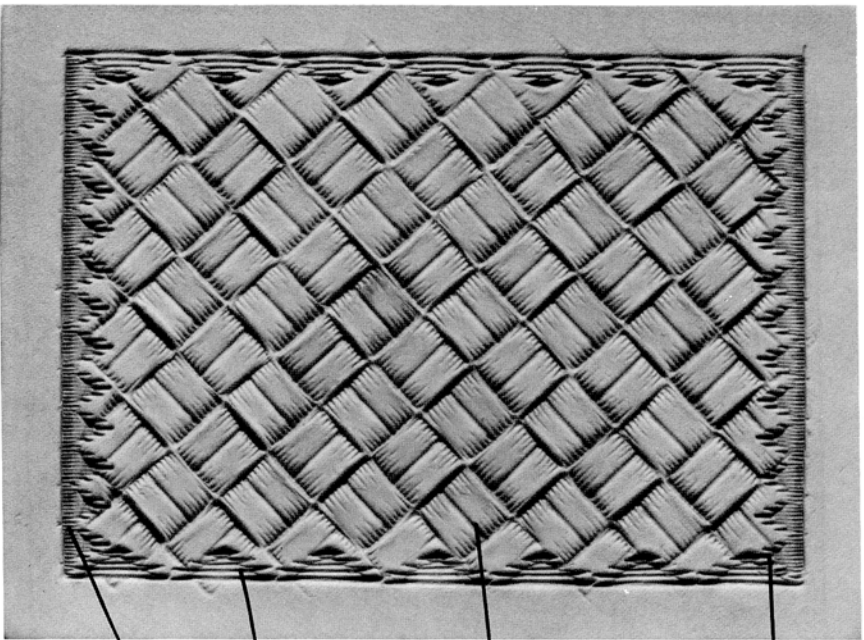
V707



C432

X505

X505-2

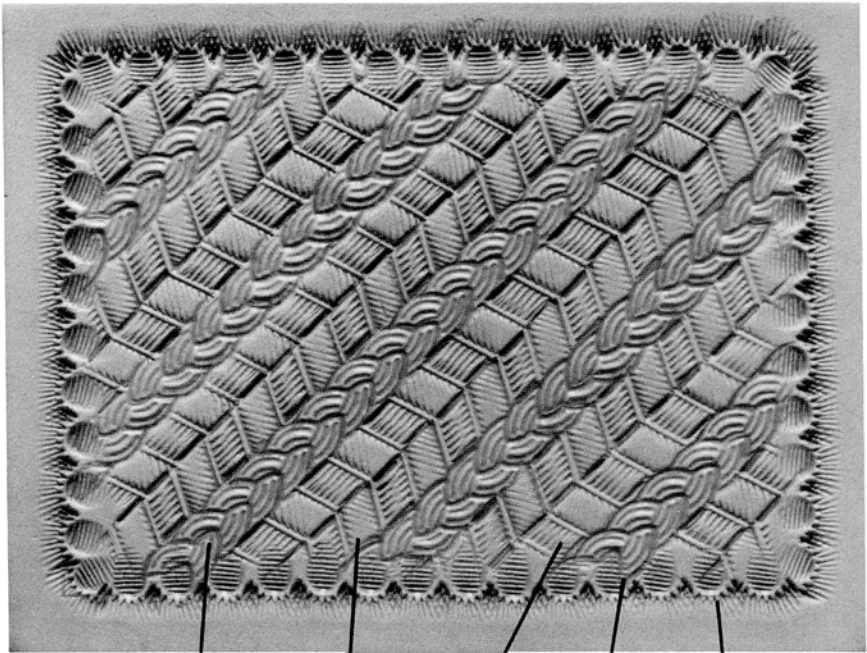


**B199**

**F926H**

**X507**

**F926**



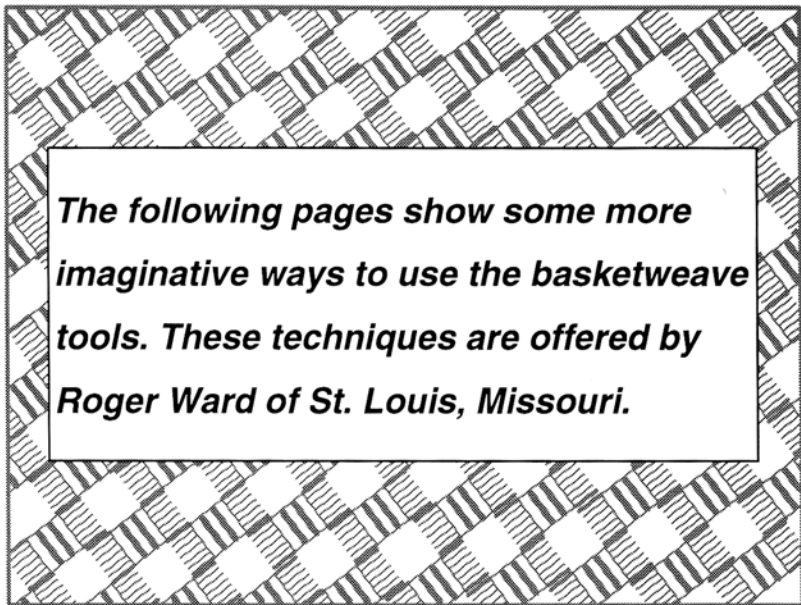
**G878**

**X498**

**X498-2**

**P216**

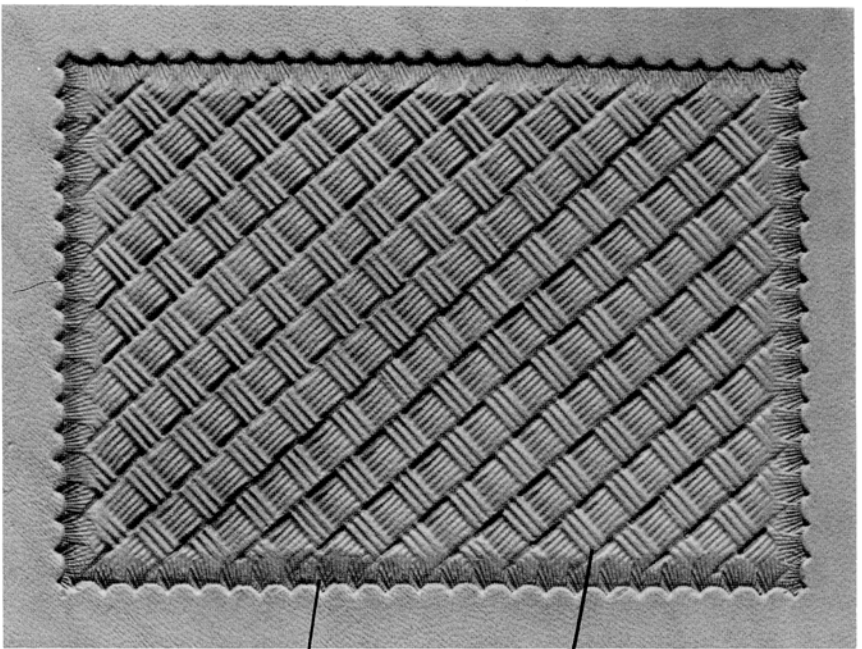
**C432**



***The following pages show some more imaginative ways to use the basketweave tools. These techniques are offered by Roger Ward of St. Louis, Missouri.***

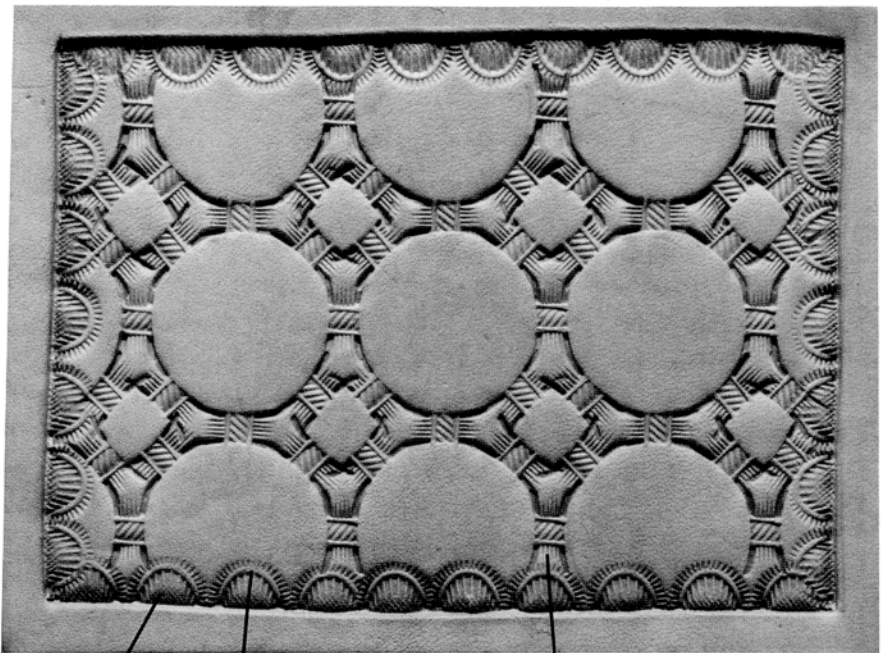


D436    X500    B702    X511    G878    Alphabet Set #8131



C425

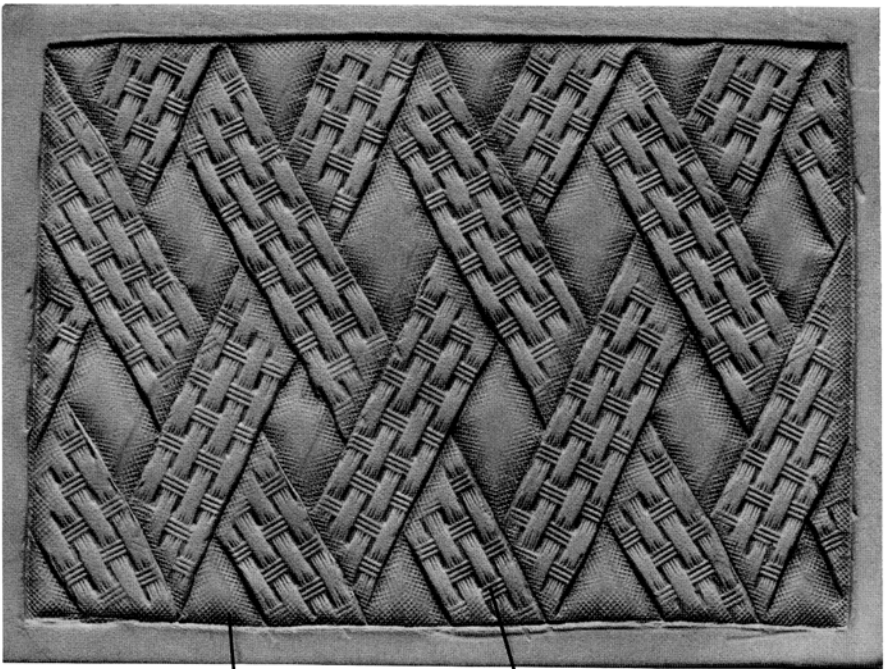
X534



B803

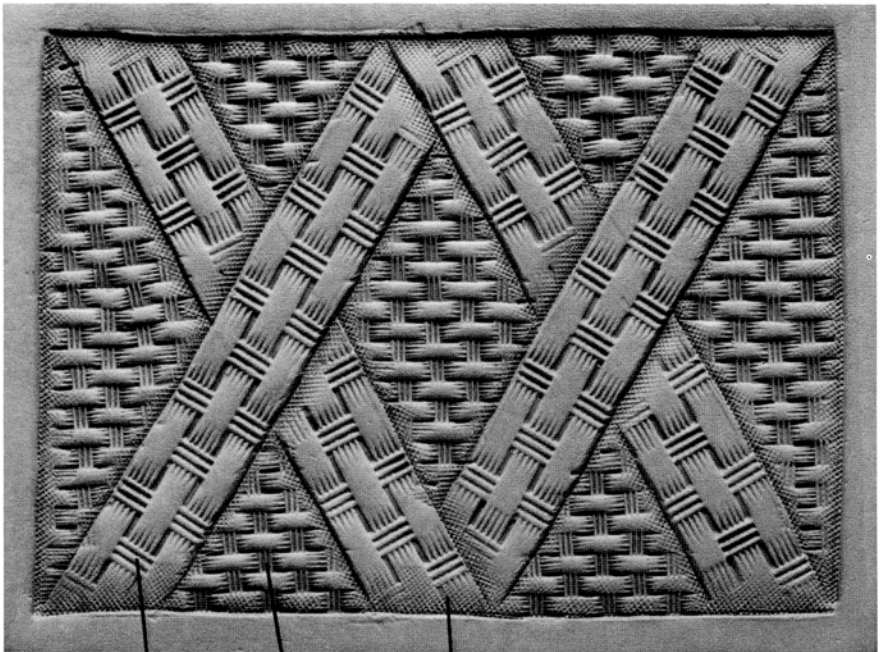
D439

X513



B205

X500

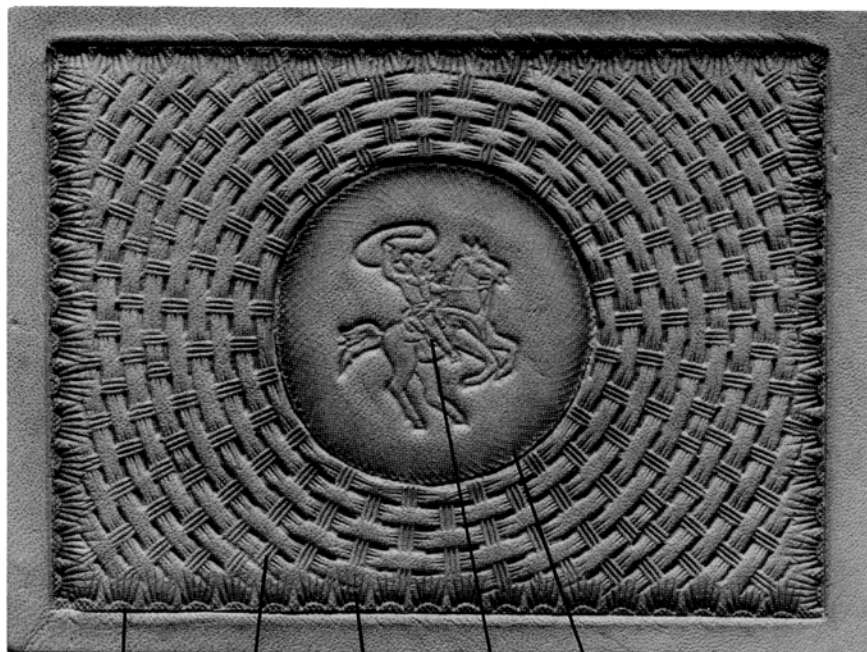


X511

X500

B205





B205

X500

C366

8478

B802



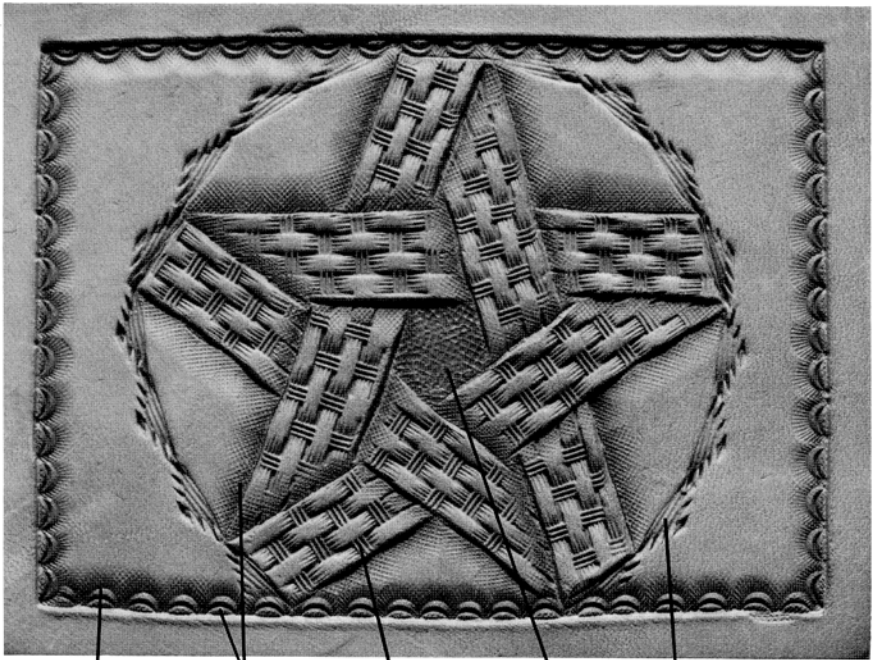
B702

X511

D436

8479

F926H



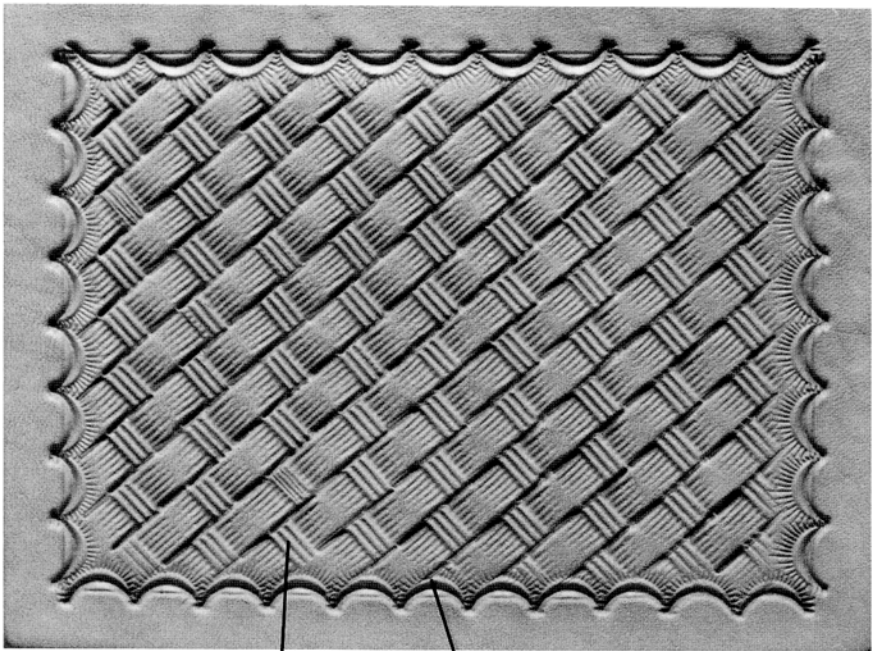
D435

B205

X500

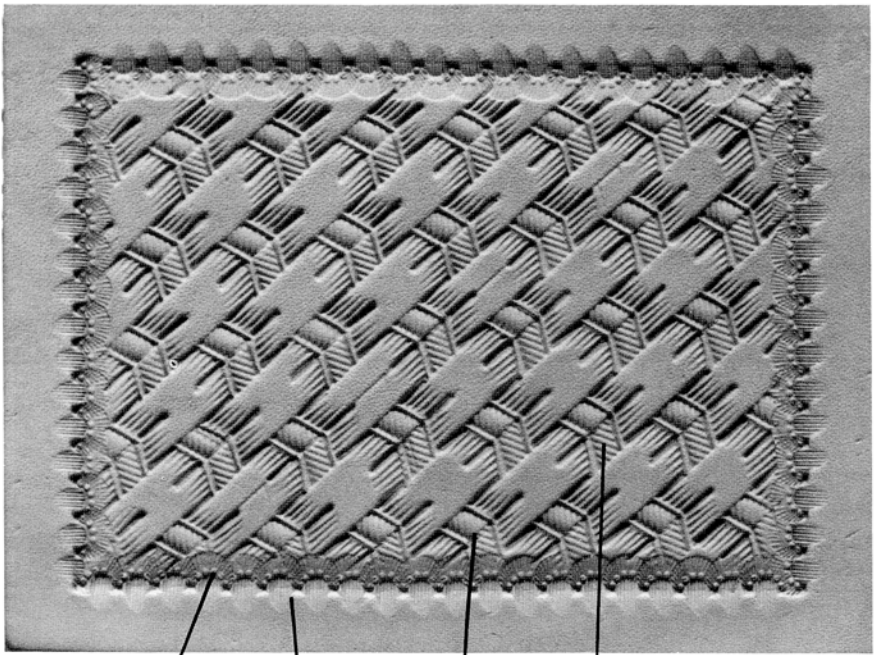
A889

F926H



X534

D438

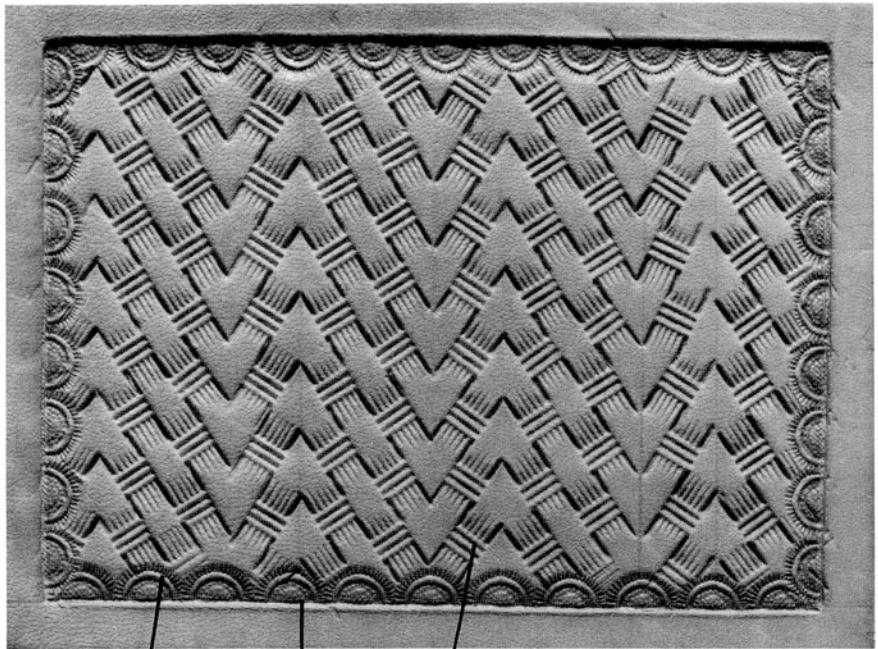


N309

P234

X505-2

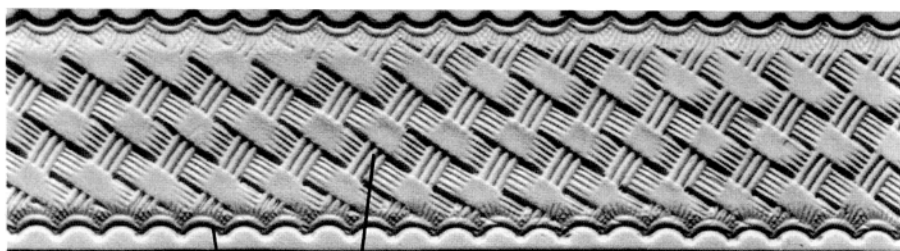
X505



D439

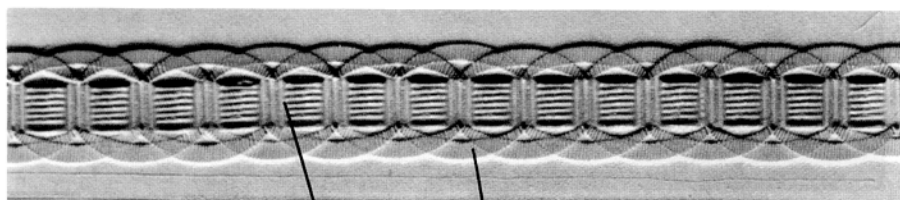
B205

X511



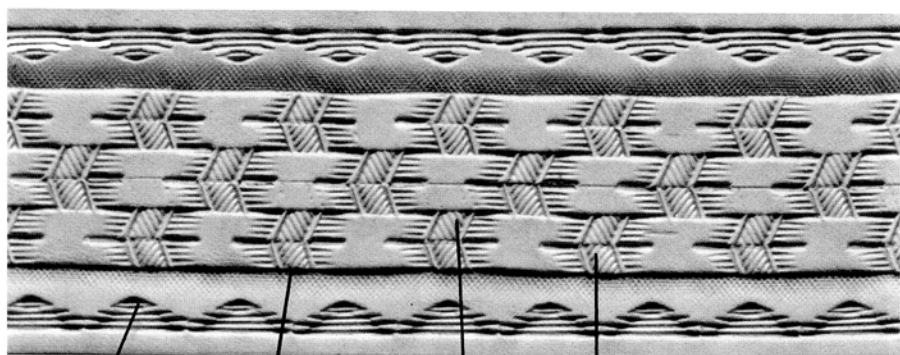
D436

X511



X534

V715

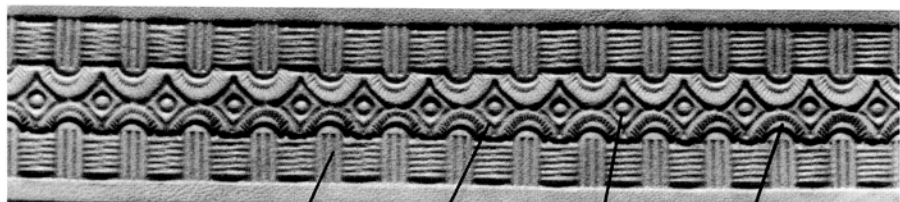


F926H

B205

X505

X505-2

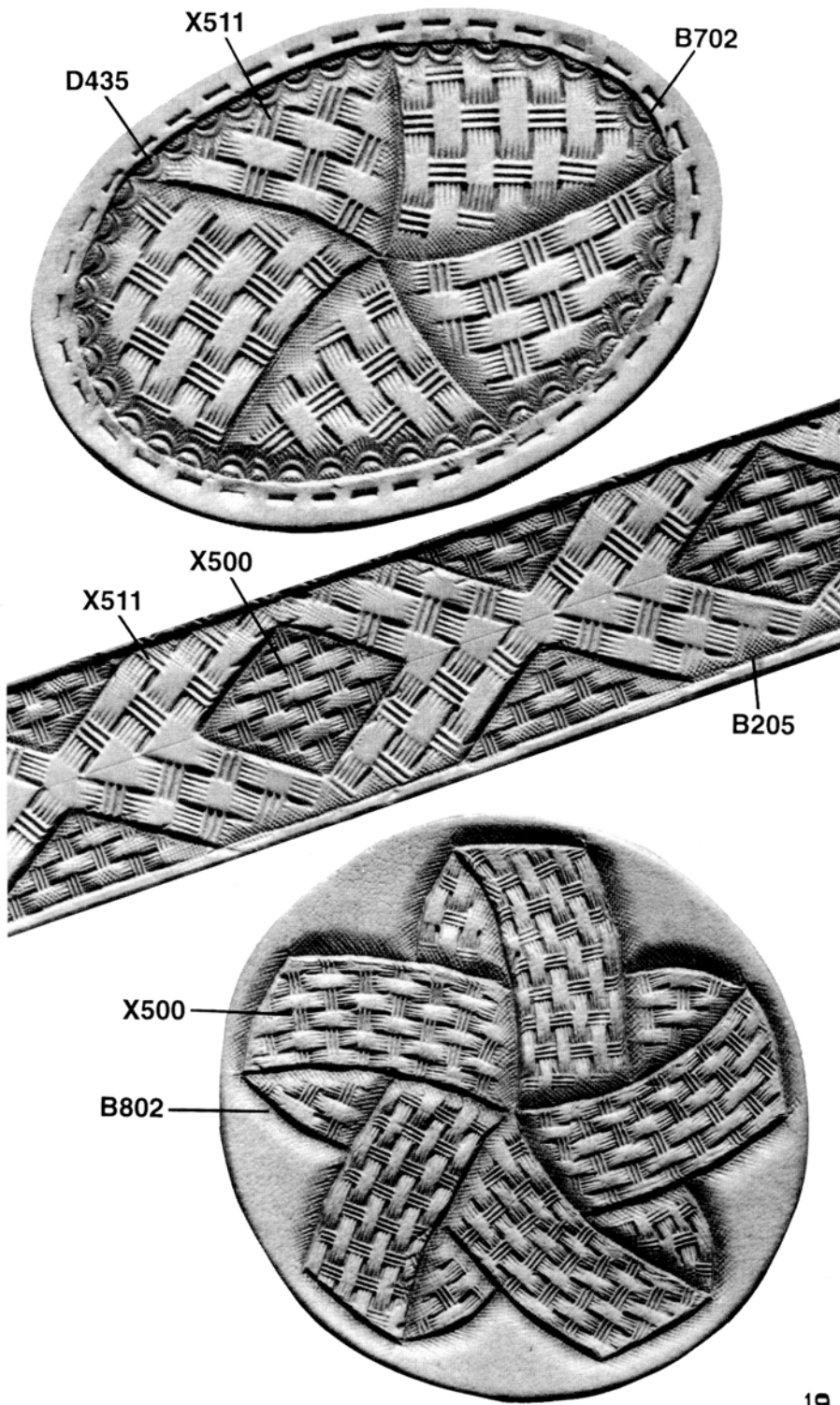


X534

G602

S631

D435



Basketweave and geometric stamping are the easiest way to get introduced into leather tooling. They are, however, only the tip of the proverbial iceberg. Once you feel comfortable with geometrics, try branching out into some more advanced techniques. In this book we have listed several other tools that are used in more complex designs. The swivel knife is one such tool, it is the basis for all other tooling approaches. There are hundreds of stamps and designs available, but only a handful are necessary to do traditional floral and/or figure carving.

Tandy also offers in store classes on various subjects. Check with your local Tandy Leather Store to see what they have to offer, or if there is no store in your area, write to:

**Tandy Leather Factory  
P. O. Box 50429  
Ft. Worth, TX 76105**

and ask for a free catalog.

**Or visit [www.tandyleatherfactory.com](http://www.tandyleatherfactory.com).**

Basketweave and geometric stamping are the easiest way to get introduced into leather tooling. They are, however, only the tip of the proverbial iceberg. Once you feel comfortable with geometrics, try branching out into some more advanced techniques. In this book we have listed several other tools that are used in more complex designs. The swivel knife is one such tool, it is the basis for all other tooling approaches. There are hundreds of stamps and designs available, but only a handful are necessary to do traditional floral and/or figure carving.

Tandy also offers in store classes on various subjects. Check with your local Tandy Leather Store to see what they have to offer, or if there is no store in your area, write to:

**Tandy Leather Factory  
P. O. Box 50429  
Ft. Worth, TX 76105**

and ask for a free catalog.

**Or visit [www.tandyleatherfactory.com](http://www.tandyleatherfactory.com).**



© Copyright 1996 by Tandy Leather Company.

Copyright 2008 Tandy Leather Factory All Rights Reserved  
Unauthorized duplication or distribution is prohibited.