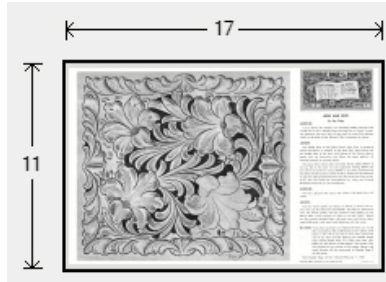




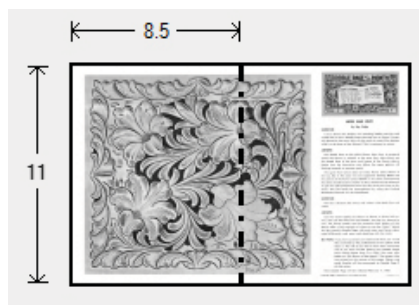
Doodle Page Digital Download

This PDF file contains 1 (one) Doodle Page. The PDF has been put together to give you options when it comes to printing. Pages and patterns that are larger than 8½x11 have been provided in two formats:



1) Full Size

If you would like to have a full size print out, take the full size pages to your local print shop and they can print it for you. All full size Doodle Pages are 11x17



2) Tiled

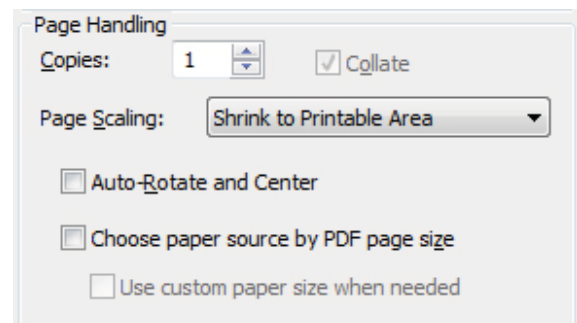
The tiled pages give you the option of printing the full sized Doodle Pages at home. You print the tiled pages and then assemble them to make the larger patterns.

The Doodle Page PDF files are typically laid out like this:

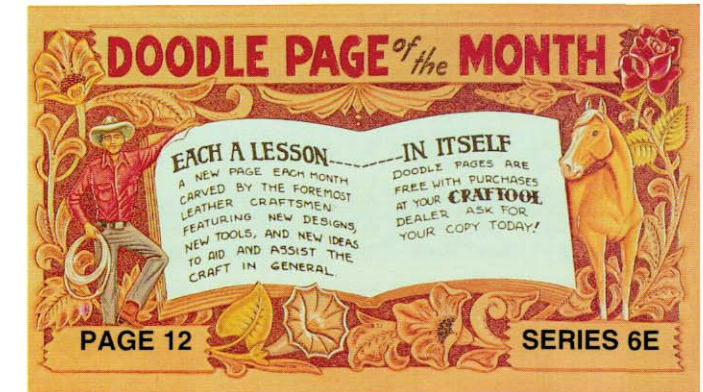
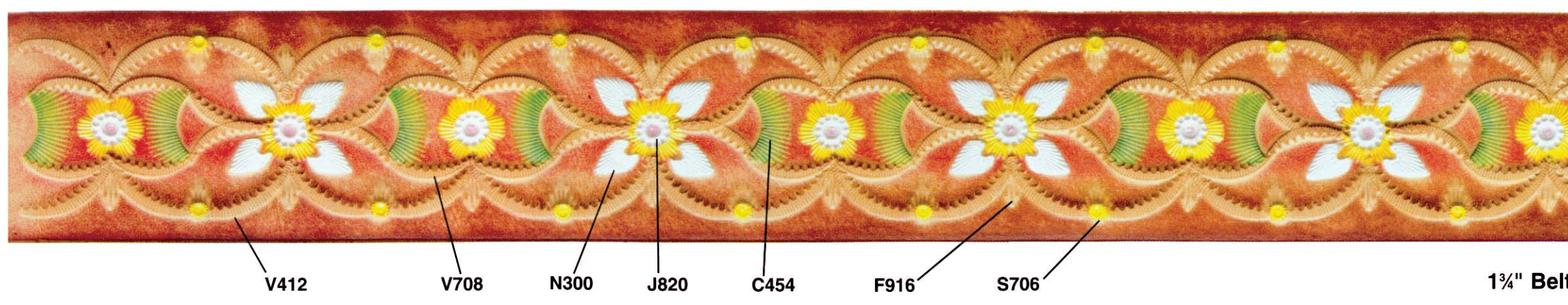
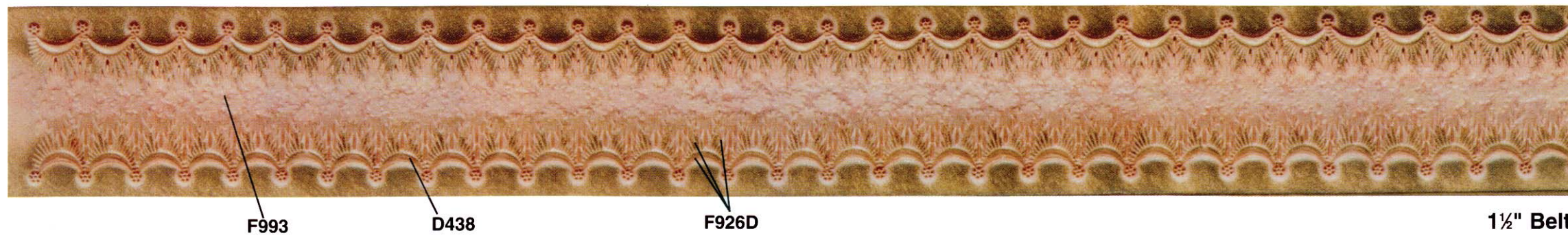
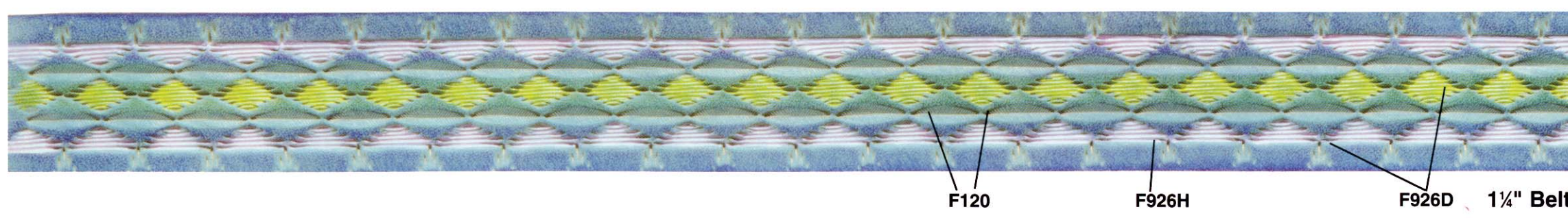
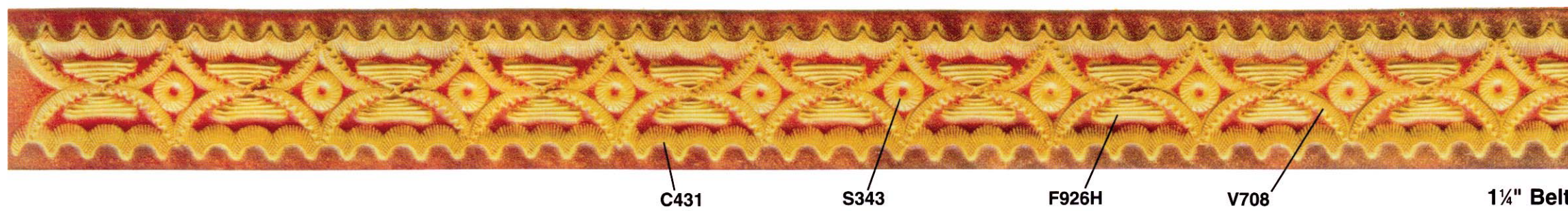
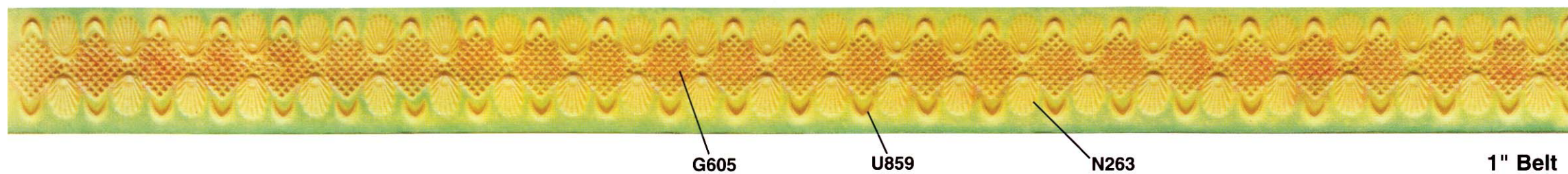
Front – full sized, front – tiled, back – full sized, back – tiled

(Some Doodle Pages do not have backs)

Please note: When printing on a home printer, the edges may get cut off. To avoid this, make sure “Page Scaling” is set to “Shrink to Printable Area” in the Adobe Reader print dialogue box. This will decrease the size of the Doodle Page a very small amount.



You may take this PDF file to your local print shop to have the full-size pages printed for your own personal use.



David's Retro Style Belts

by David Kawamura

Features stamping patterns for 12 belts, plus block dyeing instructions.

How to Block Dye

Step 1: Using Tandy's Pro Dye #2055 and a Preval Spray Maker #2053 or Airbrush, spray a light, even base coat color over the leather. Lighten up darker colored dyes by diluting with Tandy's Pro Dye Solvent #2057 before applying to leather.

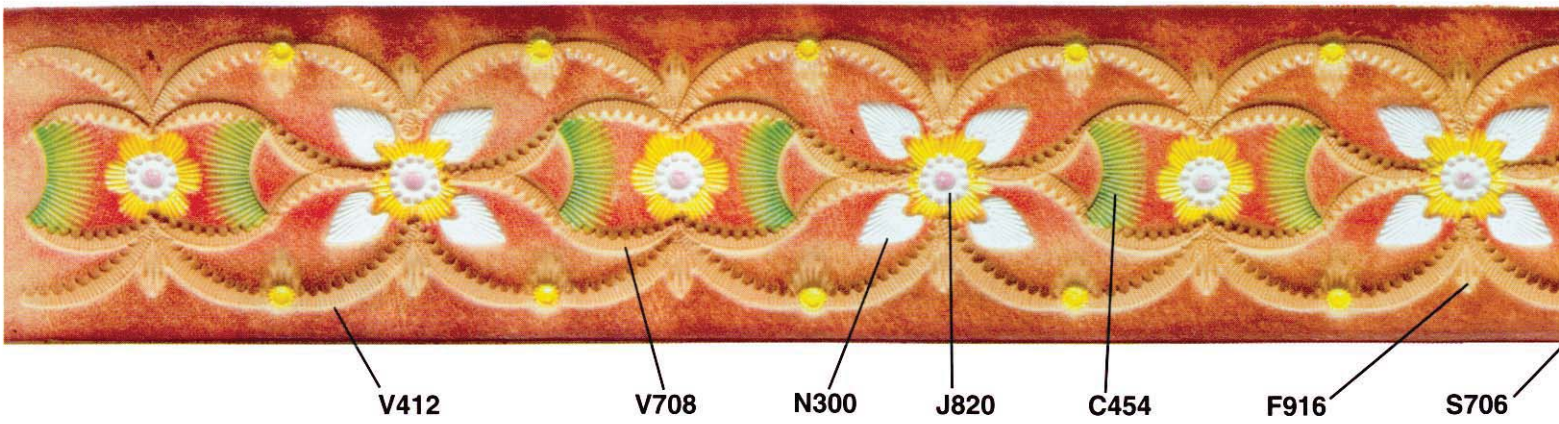
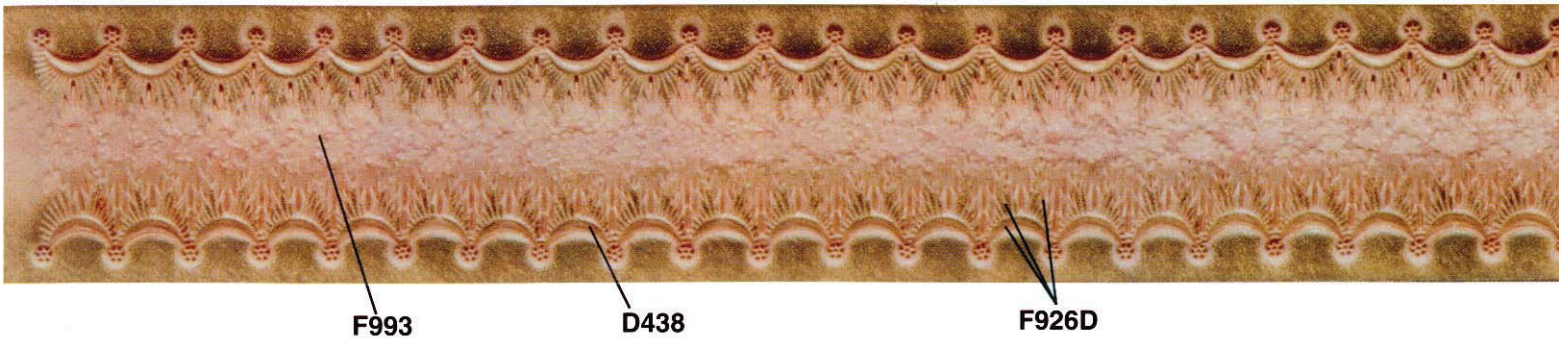
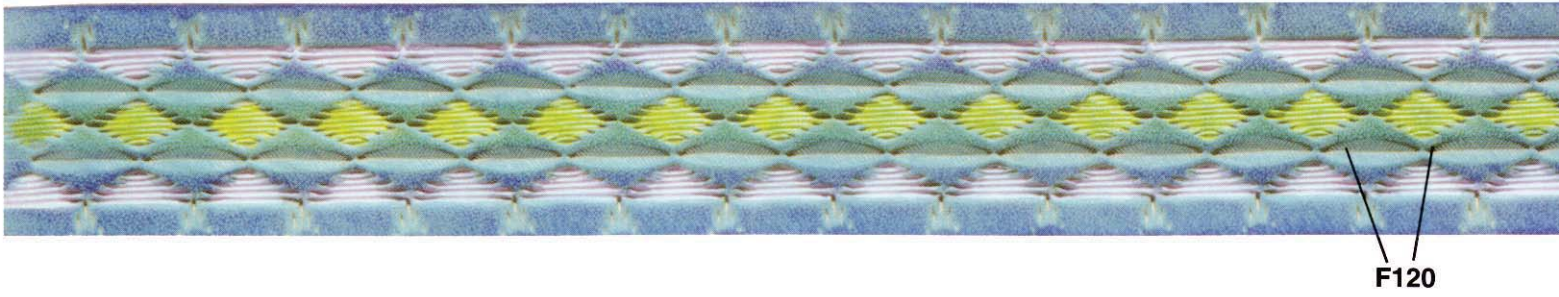
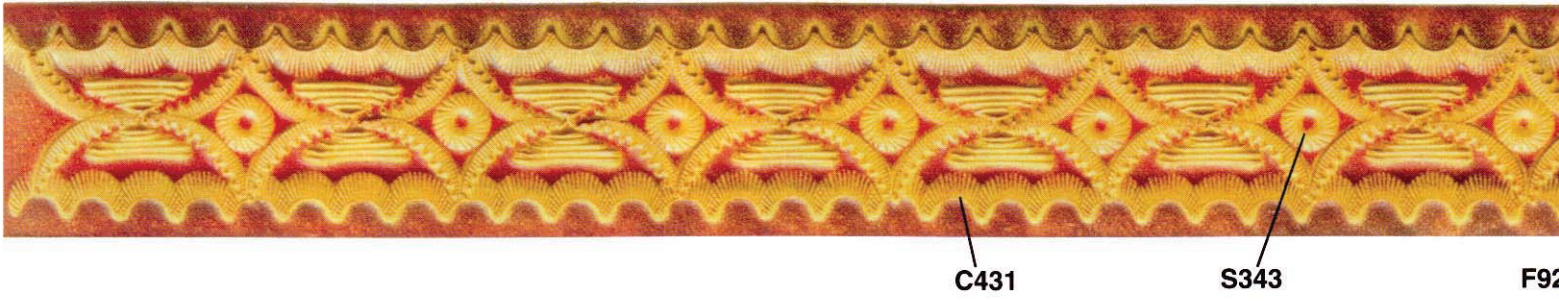
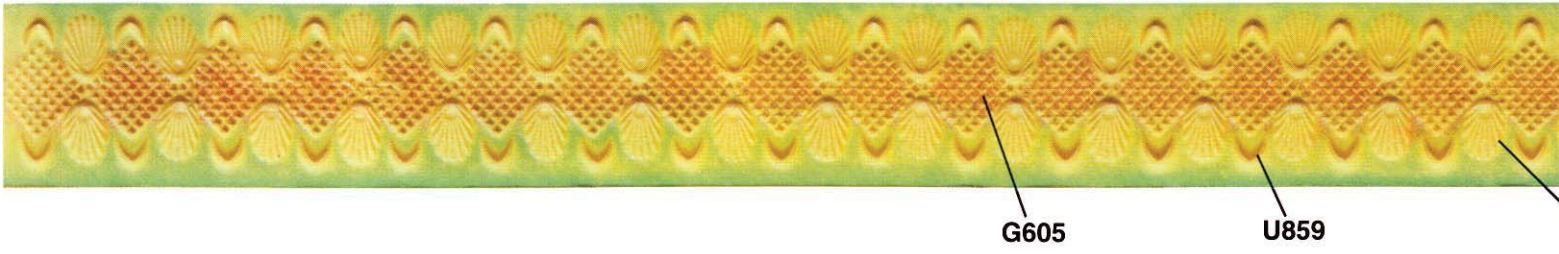
Step 2: Apply a darker or contrasting color dye to a dry sponge or cloth-wrapped block of wood. Blot on a paper towel until sponge or cloth has enough dye remaining to cover only the surface of the leather. If too much dye remains, it may run into stamped or carved designs.

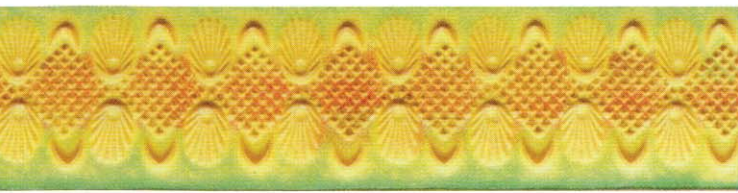
Step 3: With the sponge or cloth, apply dye to border areas of leather kit pieces, creating a halo effect. Dye may also be applied over entire surface of leather kit pieces, rubbing briskly to create a burnished effect. Add more dye to sponge or cloth, as needed, blotting before applying to leather.

Step 4: For a distinctive more attractive look, dye the edges of the leather with a very dark color of Tandy's Pro Dye, such as brown or black. Dye may be applied with a sponge, cloth or wool dauber.

Step 5: Stamped or carved designs may be enhanced by painting designs with Cova Color® #2041. Apply with a small brush.

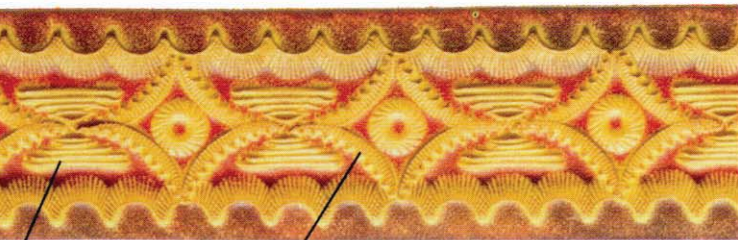
Step 6: Allow dye and/or paint to dry completely. Apply a finish, such as Satin Shene #2009 or Super Shene® #2002.





N263

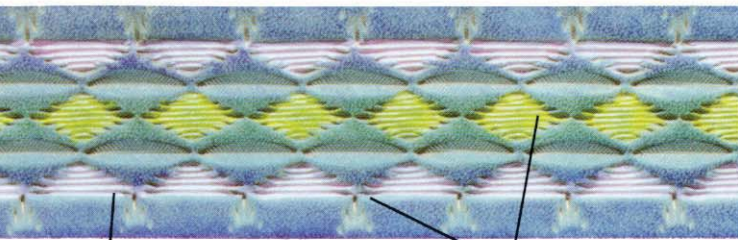
1" Belt



6H

V708

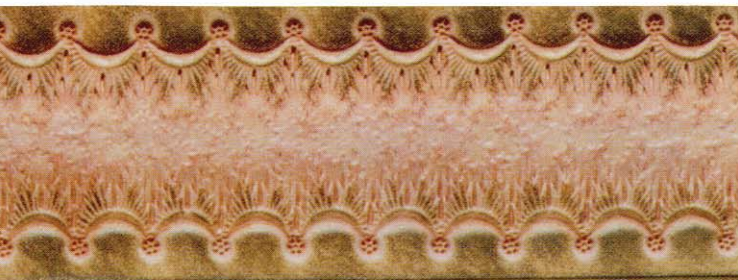
1 1/4" Belt



F926H

F926D

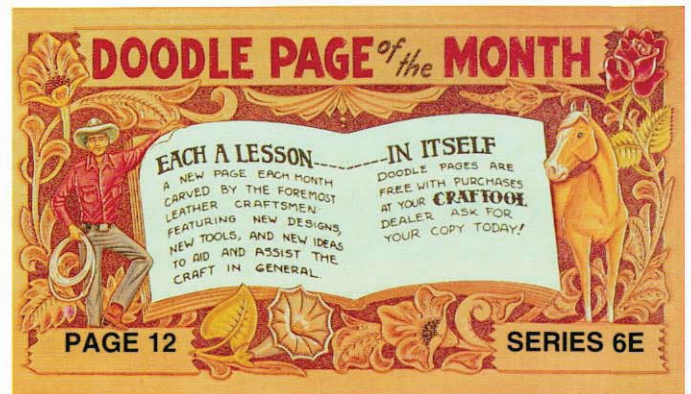
1 1/4" Belt



1 1/2" Belt



1 3/4" Belt



David's Retro Style Belts

by David Kawamura

Features stamping patterns for 12 belts, plus block dyeing instructions.

How to Block Dye

Step 1: Using Tandy's Pro Dye #2055 and a Preval Spray Maker #2053 or Airbrush, spray a light, even base coat color over the leather. Lighten up darker colored dyes by diluting with Tandy's Pro Dye Solvent #2057 before applying to leather.

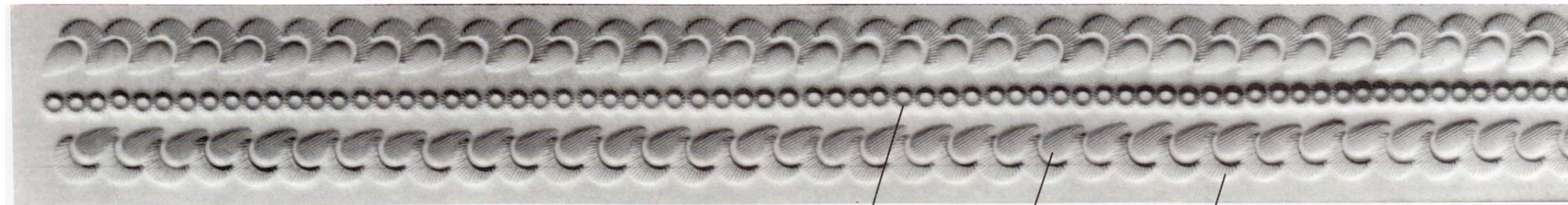
Step 2: Apply a darker or contrasting color dye to a dry sponge or cloth-wrapped block of wood. Blot on a paper towel until sponge or cloth has enough dye remaining to cover only the surface of the leather. If too much dye remains, it may run into stamped or carved designs.

Step 3: With the sponge or cloth, apply dye to border areas of leather kit pieces, creating a halo effect. Dye may also be applied over entire surface of leather kit pieces, rubbing briskly to create a burnished effect. Add more dye to sponge or cloth, as needed, blotting before applying to leather.

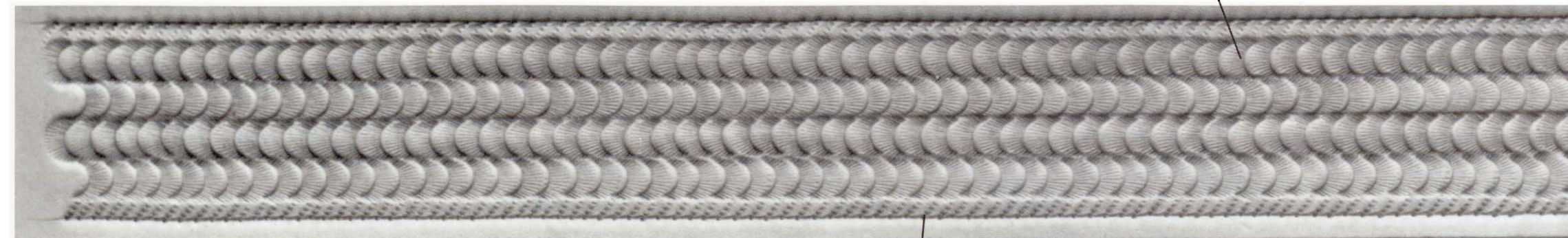
Step 4: For a distinctive more attractive look, dye the edges of the leather with a very dark color of Tandy's Pro Dye, such as brown or black. Dye may be applied with a sponge, cloth or wool dauber.

Step 5: Stamped or carved designs may be enhanced by painting designs with Cova Color® #2041. Apply with a small brush.

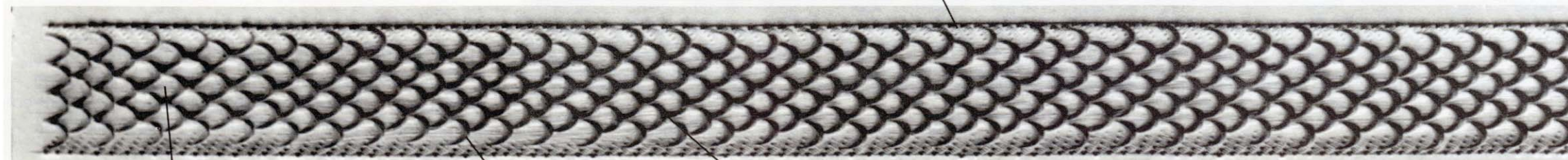
Step 6: Allow dye and/or paint to dry completely. Apply a finish, such as Satin Shene #2009 or Super Shene® #2002.



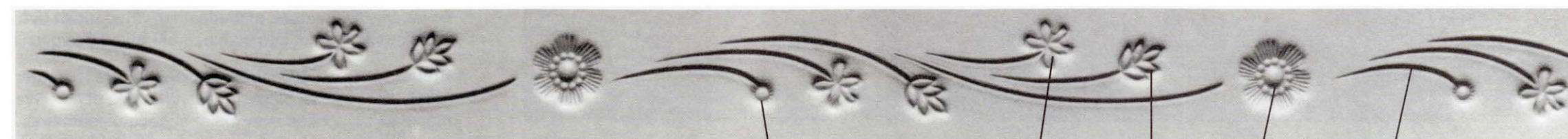
S706 P215 C431 1½" Belt



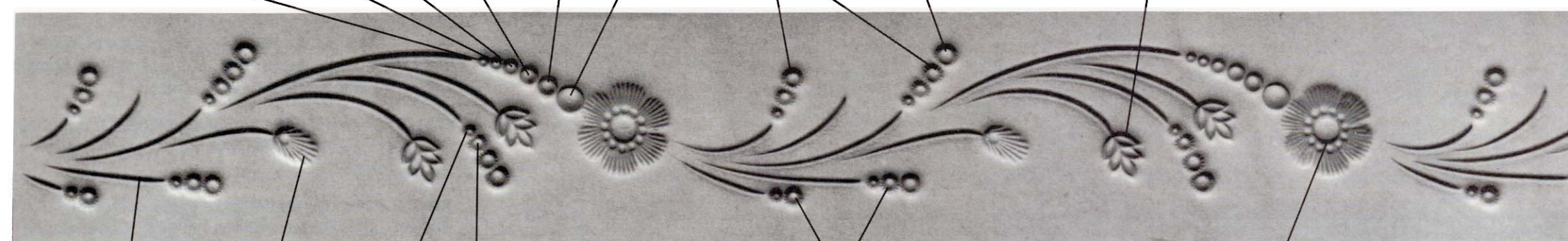
V463 1¾" Belt



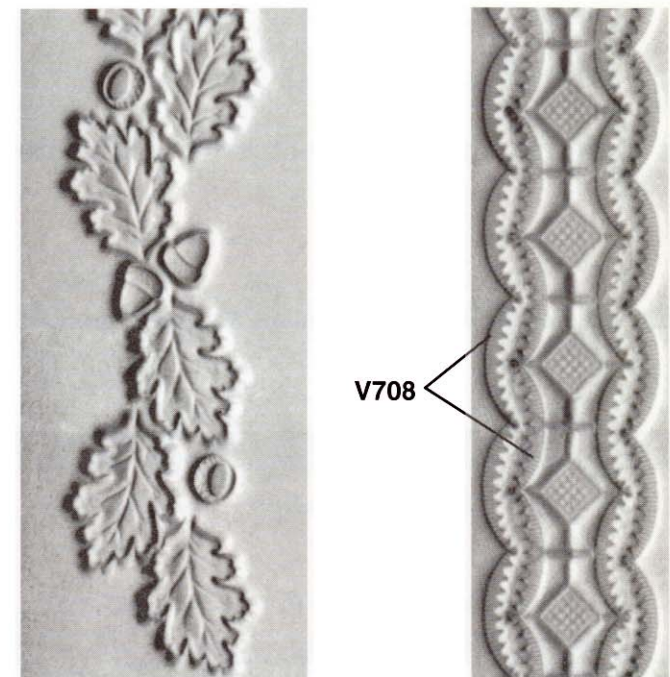
B204 (scratch on surface) U855 P368 1¼" Belt



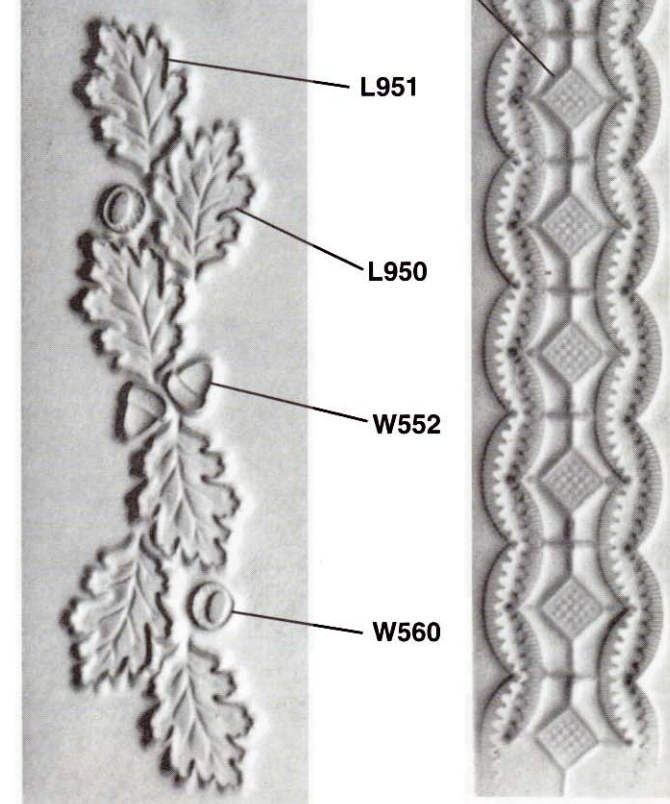
S931 S932 S631 S632 S633 S864 S706 S722 F990 F991 J820 Knife Cut 1" Belt



Knife Cut N363 C705 S724 S724 J816 1¾" Belt



V708



G548

L951

L950

W552

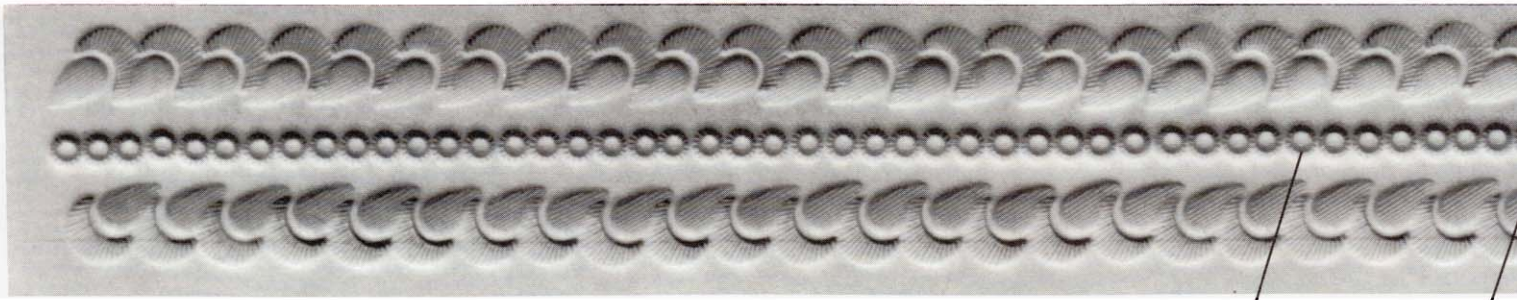
W560

1½" Belt

1" Belt

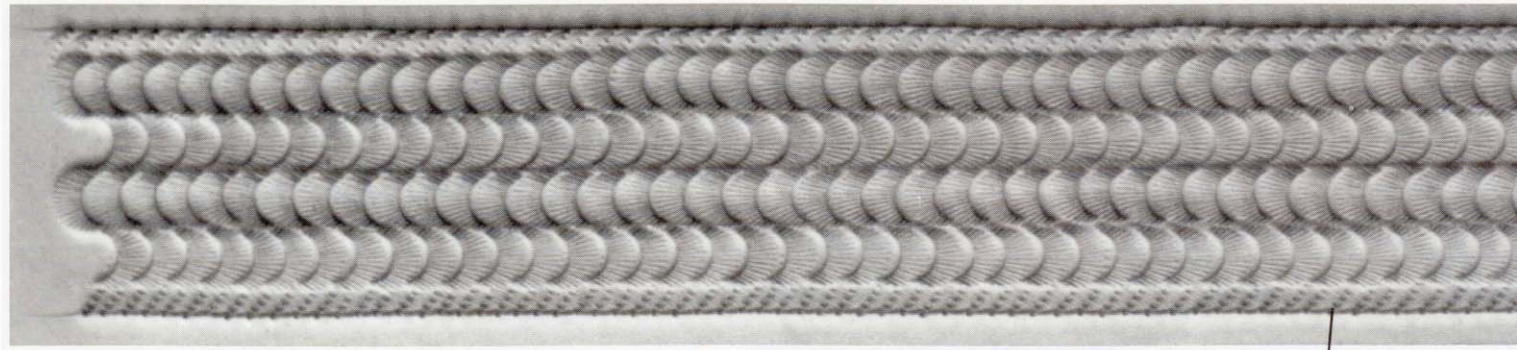


©1998 Tandy Leather Company,®
A Division of Tandy Crafts, Inc.®
All rights reserved.

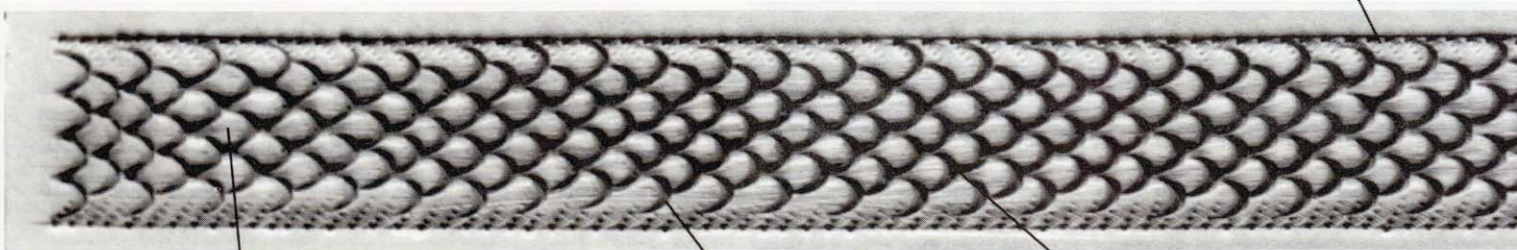


S706

P215



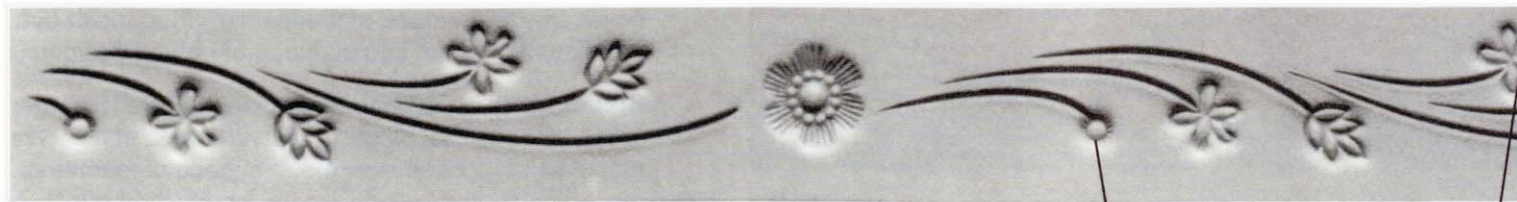
V463



B204 (scratch on surface)

U855

P368



S931

S932

S631

S632

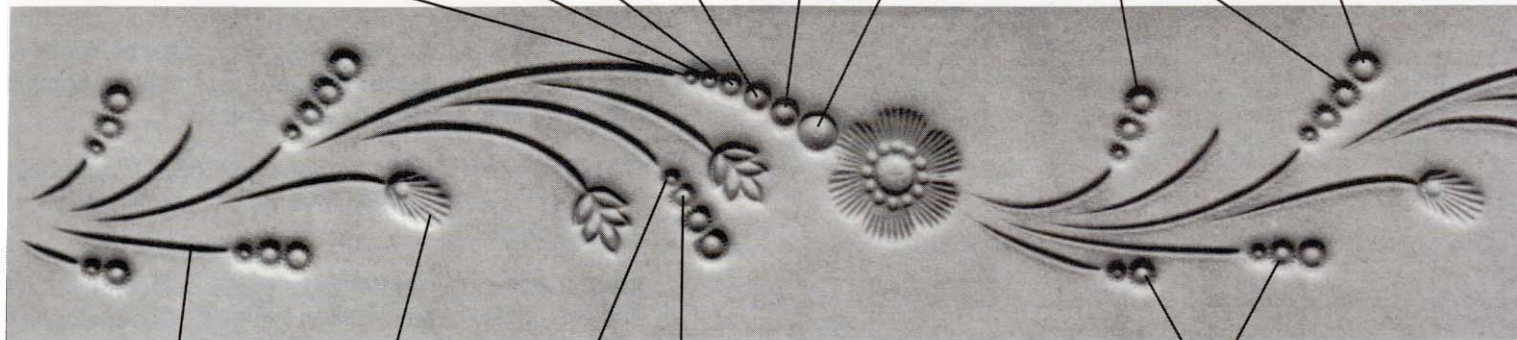
S633

S864

S706

S722

F99



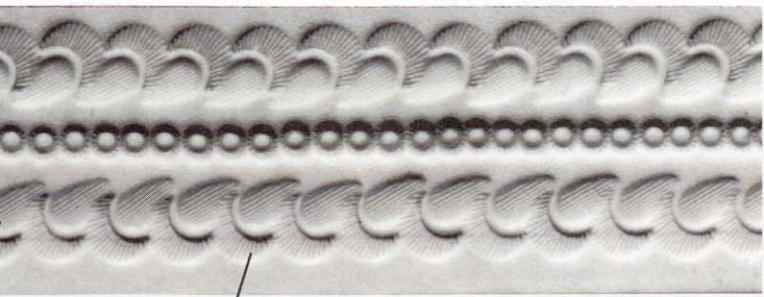
Knife Cut

N363

C705

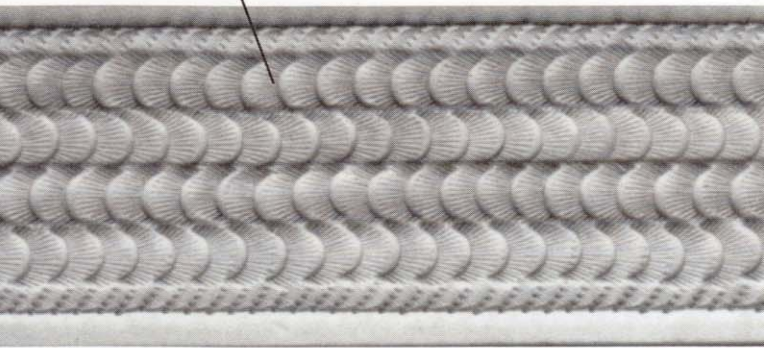
S724

S724

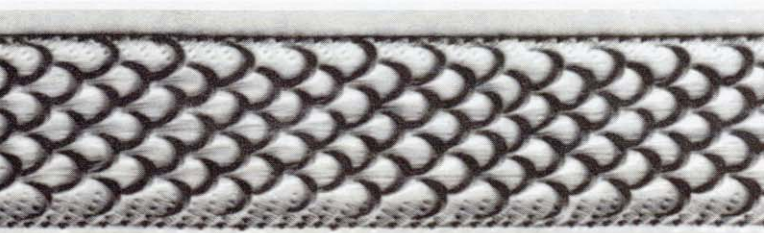


C431

1½" Belt



1¾" Belt



1¼" Belt

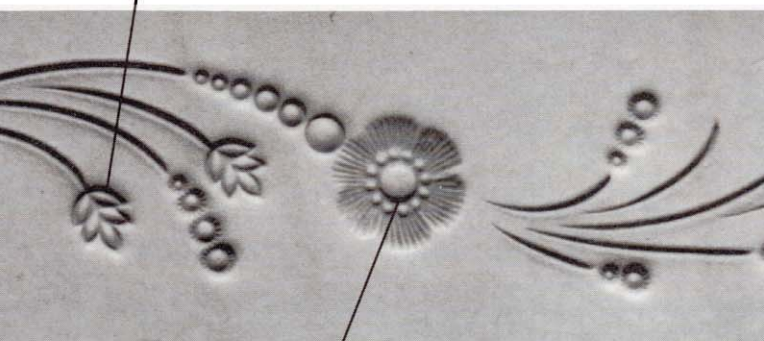


F991

J820

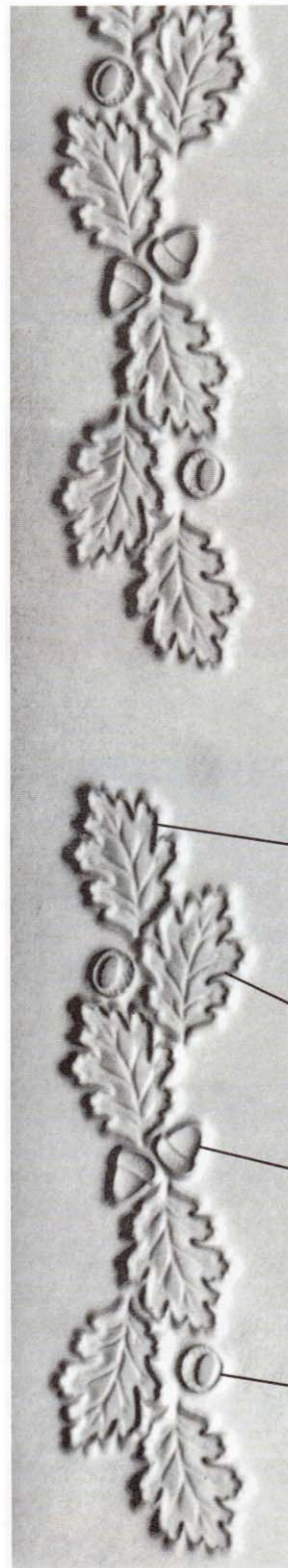
Knife Cut

1" Belt



J816

1¾" Belt



V708

G548

L951

L950

W552

W560

1½" Belt

1" Belt

tandy
Leather & Crafts

©1998 Tandy Leather Company.
A Division of Tandy Crafts, Inc.
All rights reserved.