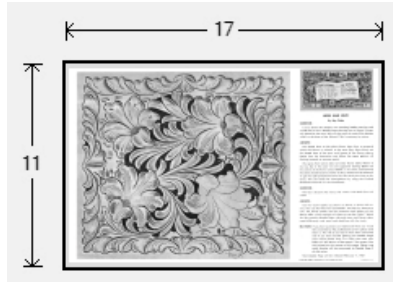




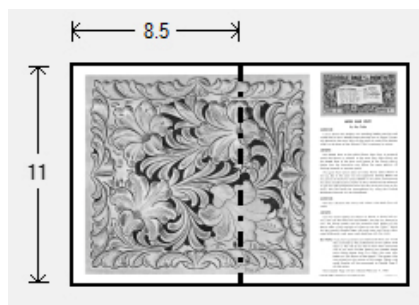
Doodle Page Digital Download

This PDF file contains 1 (one) Doodle Page. The PDF has been put together to give you options when it comes to printing. Pages and patterns that are larger than 8½x11 have been provided in two formats:



1) Full Size

If you would like to have a full size print out, take the full size pages to your local print shop and they can print it for you. All full size Doodle Pages are 11x17



2) Tiled

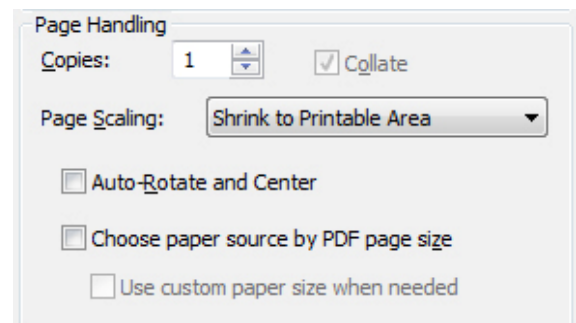
The tiled pages give you the option of printing the full sized Doodle Pages at home. You print the tiled pages and then assemble them to make the larger patterns.

The Doodle Page PDF files are typically laid out like this:

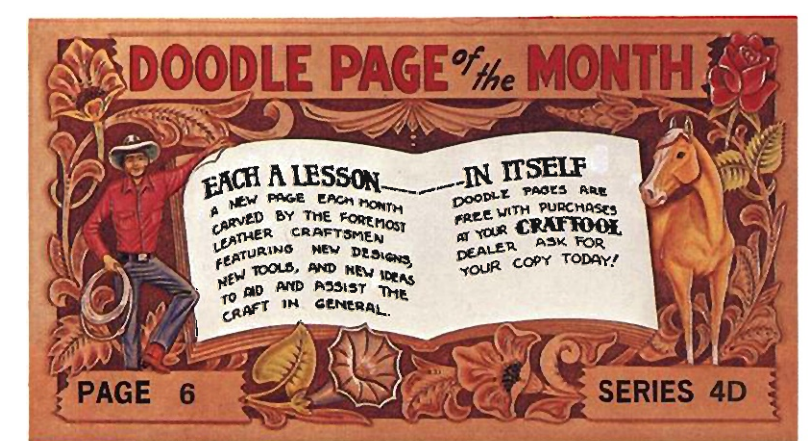
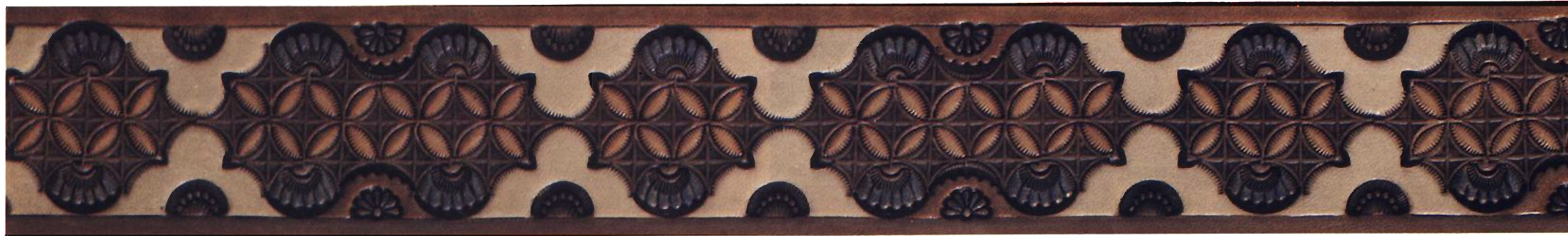
Front – full sized, front – tiled, back – full sized, back – tiled

(Some Doodle Pages do not have backs)

Please note: When printing on a home printer, the edges may get cut off. To avoid this, make sure “Page Scaling” is set to “Shrink to Printable Area” in the Adobe Reader print dialogue box. This will decrease the size of the Doodle Page a very small amount.



You may take this PDF file to your local print shop to have the full-size pages printed for your own personal use.



DESIGNS WITH NEW CRAFTTOOLS by Jerry Jennings

Three new Crafttool stamping tools are featured this month; G870, G526 and B961.

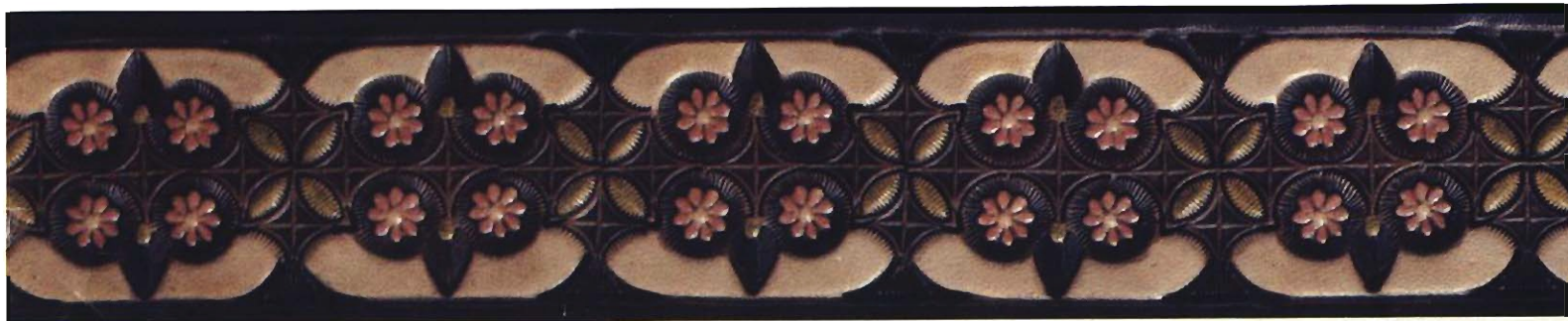
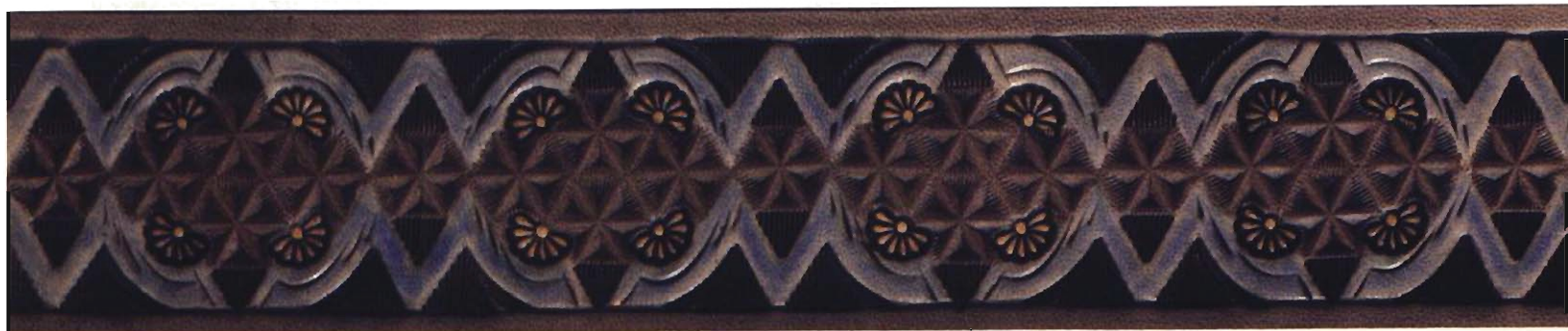
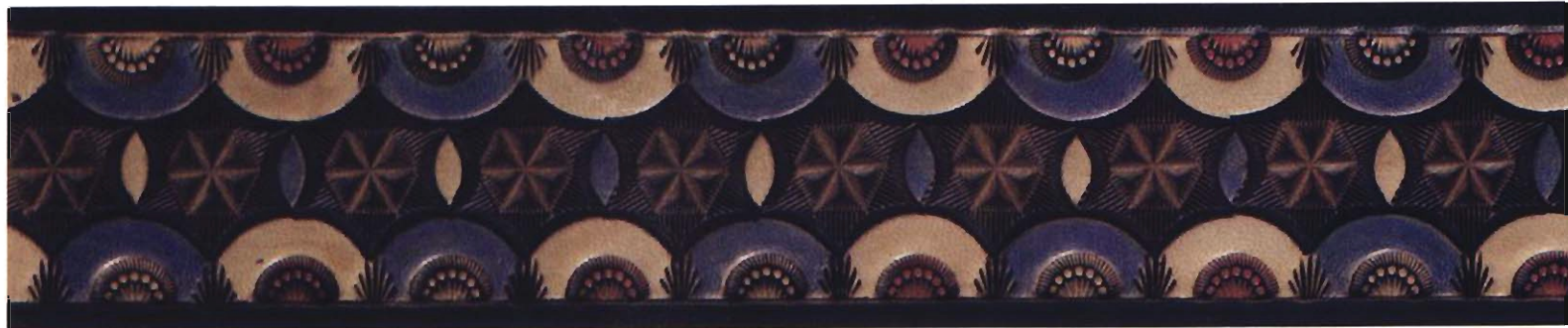
I have designed five new stamping designs for 1 3/4" belts plus some doodles to suggest other uses for the tools.

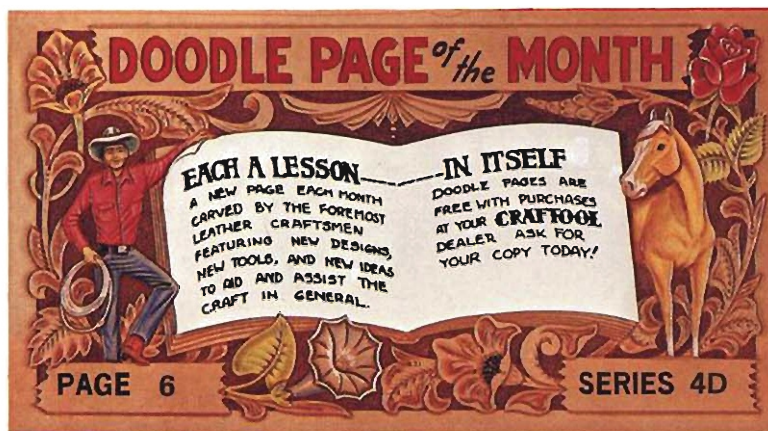
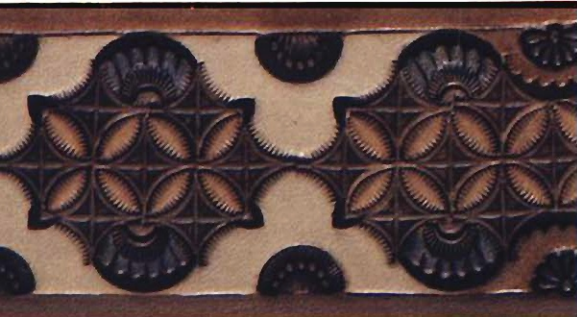
"How to stamp" each pattern is shown on the back of the page. The versatility of these new tools is amazing. Get some leather and experiment to find the many design combinations possible with these tools.

The designs were dyed with Tandy Leather Super Dye. The effect of the colors was softened by reducing with Super Dye Solvent.

Apply all colors and let dry. Apply Tandy Leather Super Shene as "resist" over colors and natural areas of design and let dry. Antique and let dry. Apply Super Shene for a finish coat.







DESIGNS WITH NEW CRAFTTOOLS by Jerry Jennings

Three new Crafttool stamping tools are featured this month; G870, G526 and B961.

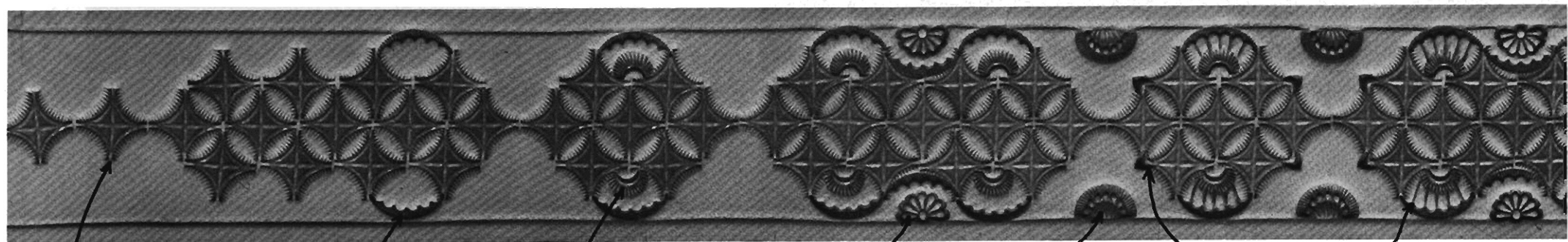
I have designed five new stamping designs for 1 3/4" belts plus some doodles to suggest other uses for the tools.

"How to stamp" each pattern is shown on the back of the page. The versatility of these new tools is amazing. Get some leather and experiment to find the many design combinations possible with these tools.

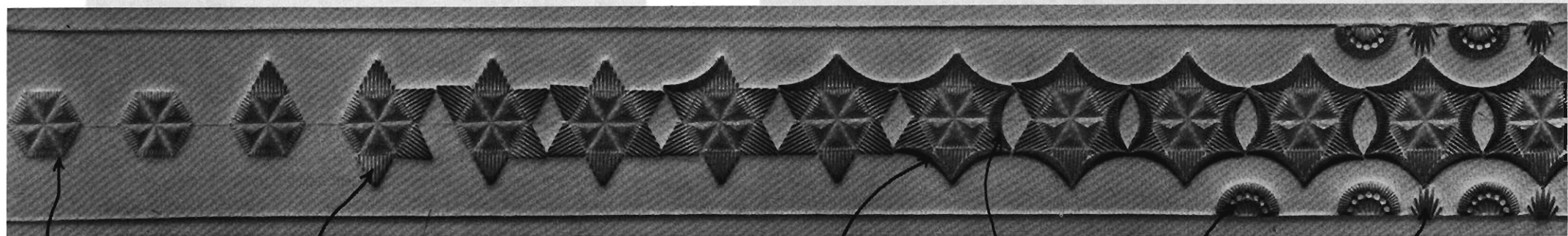
The designs were dyed with Tandy Leather Super Dye. The effect of the colors was softened by reducing with Super Dye Solvent.

Apply all colors and let dry. Apply Tandy Leather Super Shene as "resist" over colors and natural areas of design and let dry. Antique and let dry. Apply Super Shene for a finish coat.

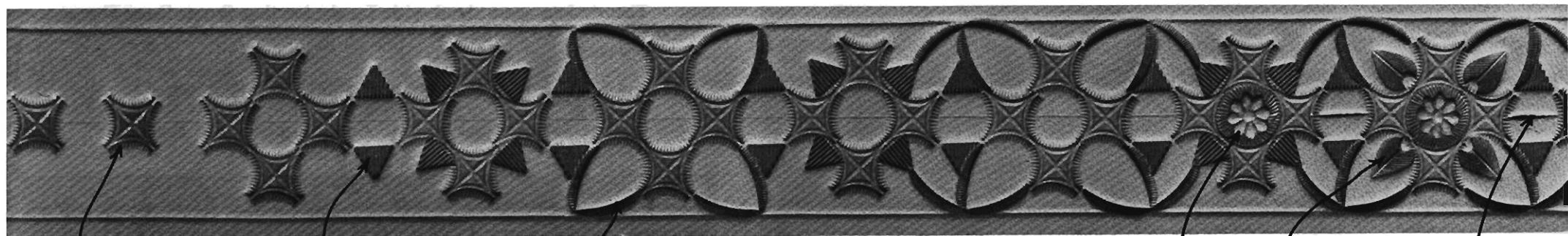




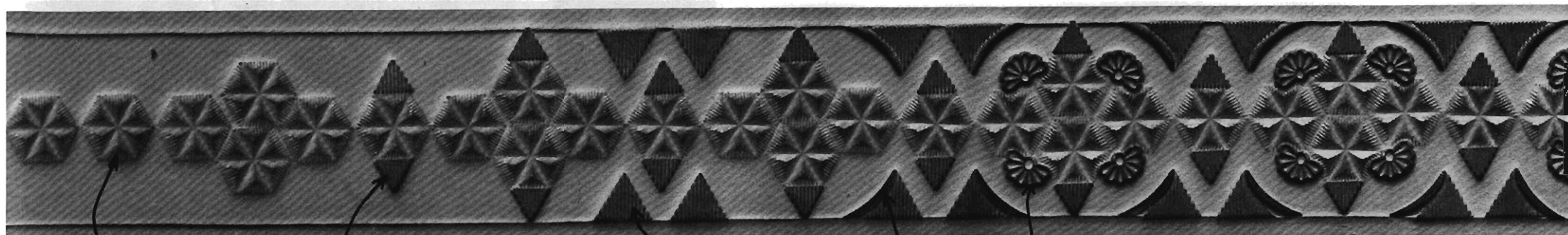
G870 V406 D435 G603 D606 U849 Swivel Knife



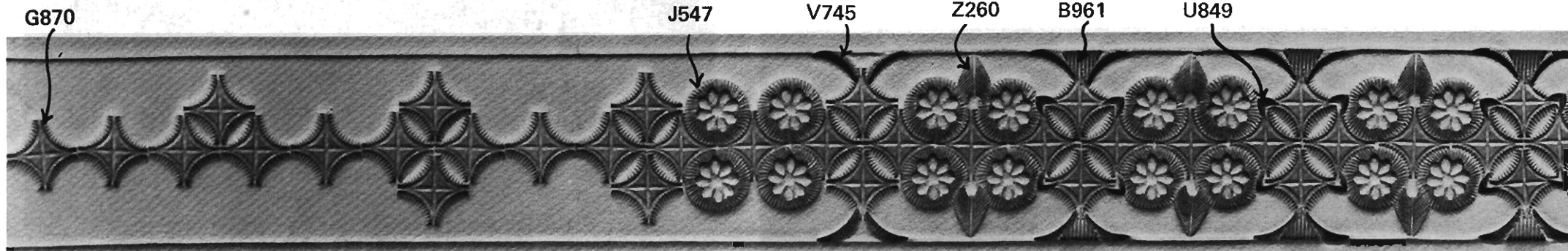
G526 B961 V707 V749 D606 F916



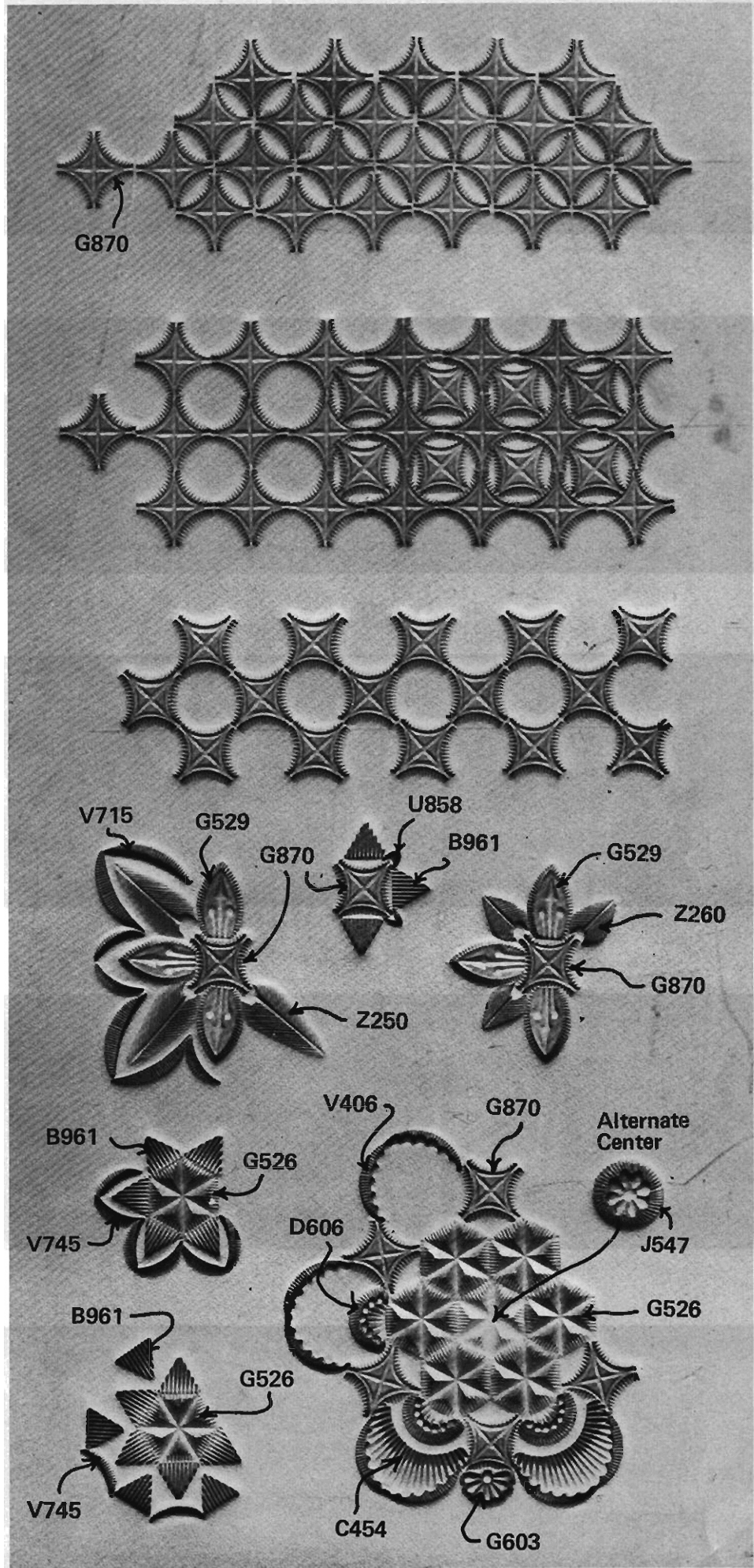
G870 B961 V746 J547 Z260 Swivel Knife



G526 B961 B962 V746 G603 Add decorative cuts if desired. See front of page.



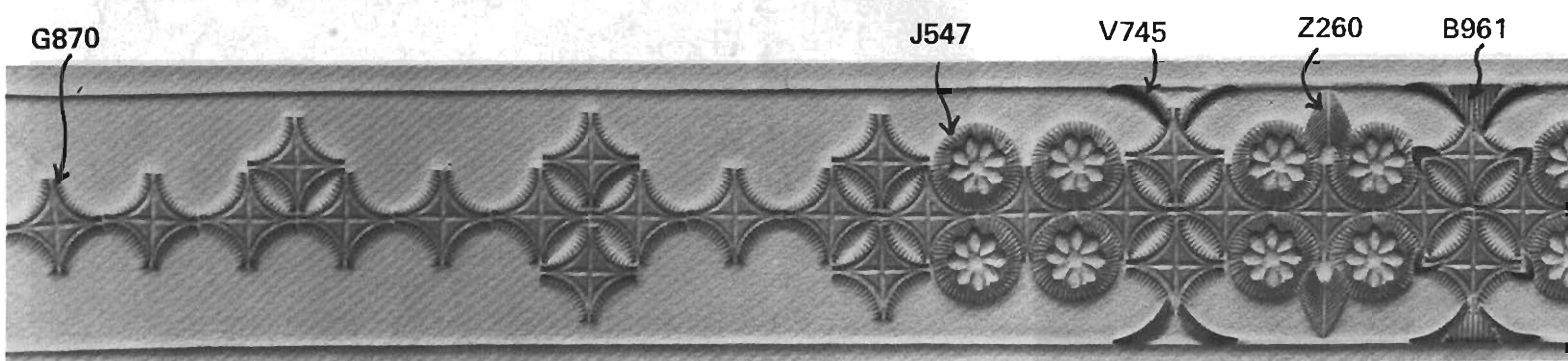
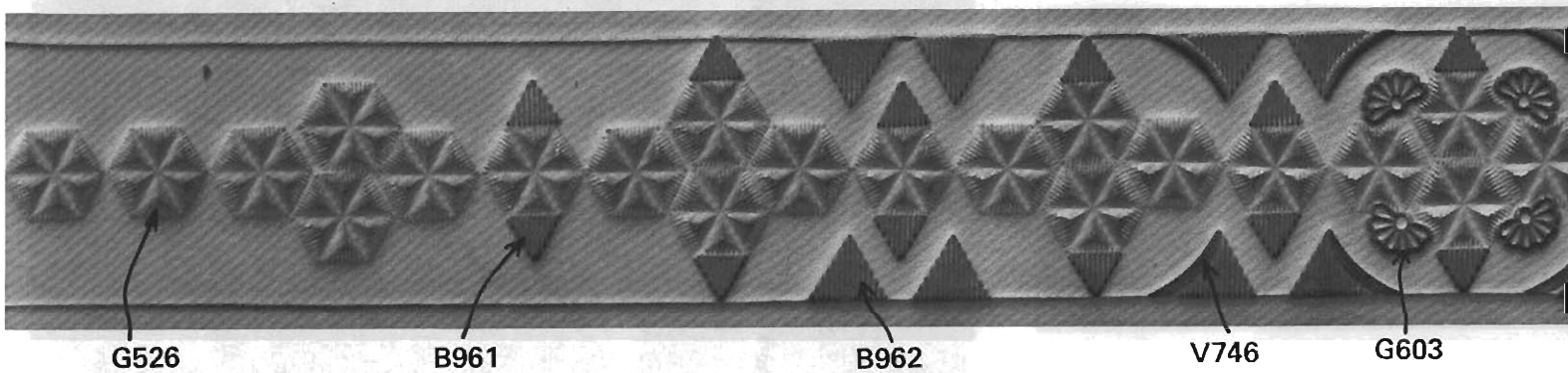
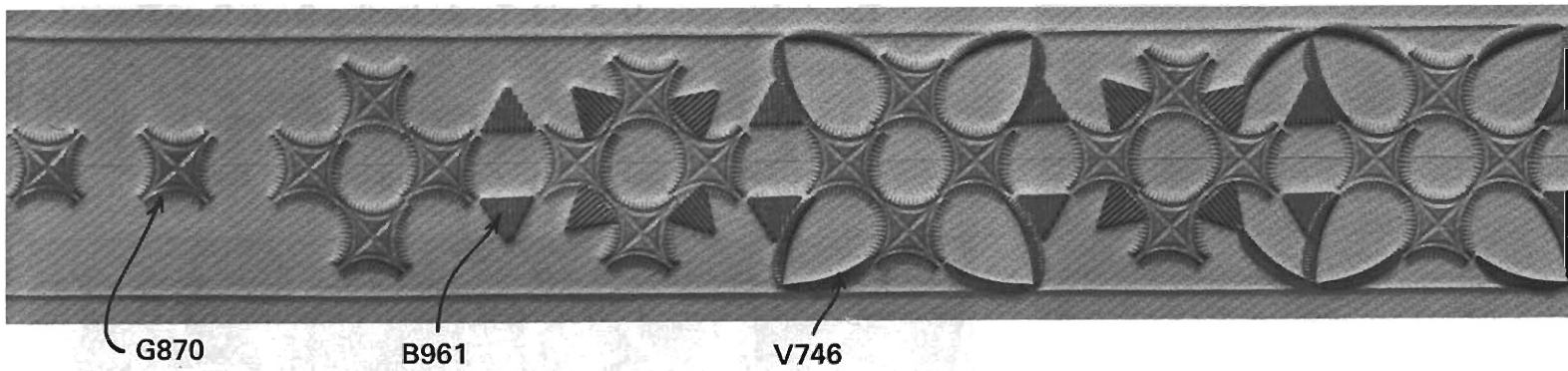
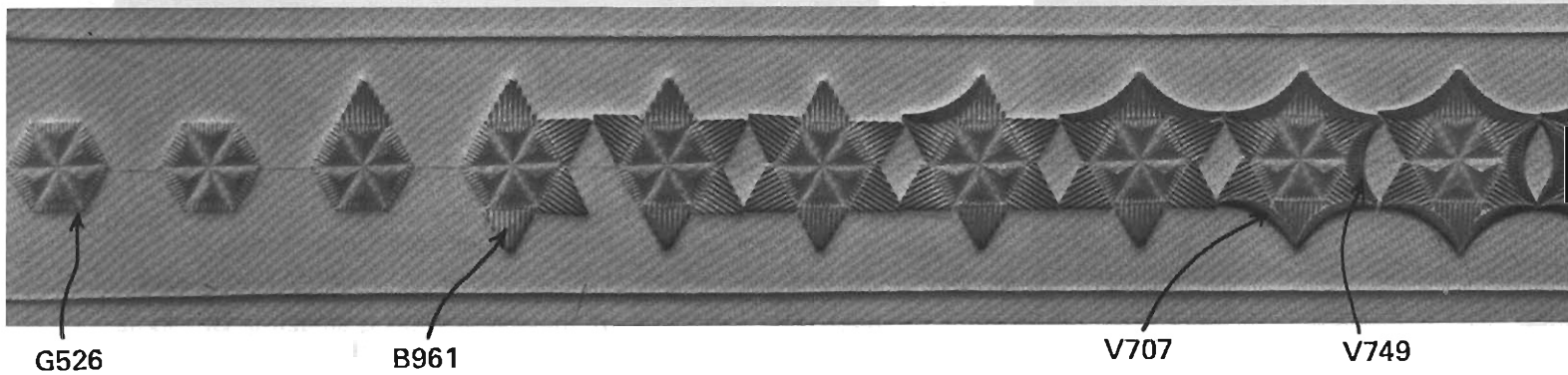
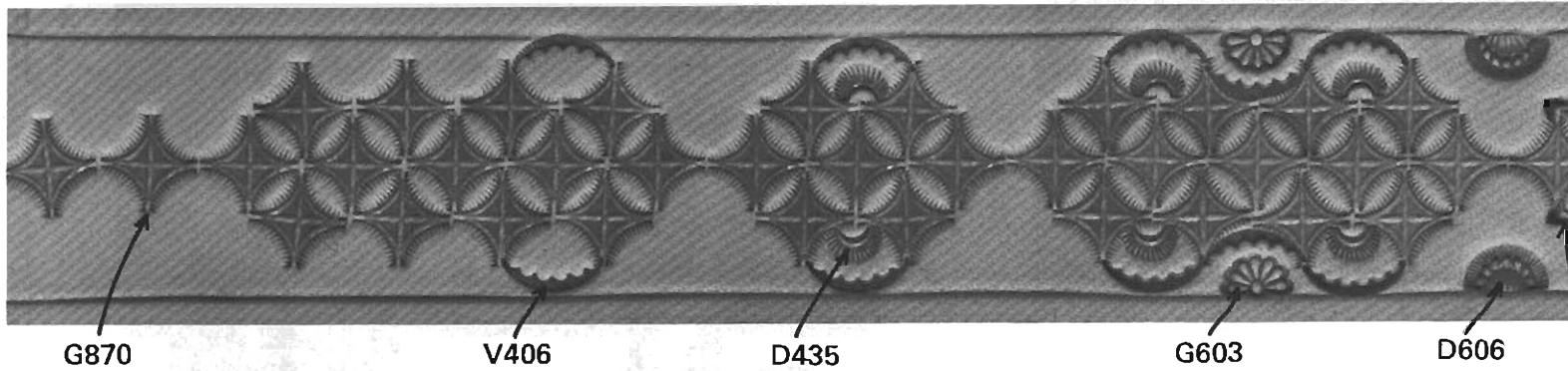
G870 J547 V745 Z260 B961 U849 Swivel Knife

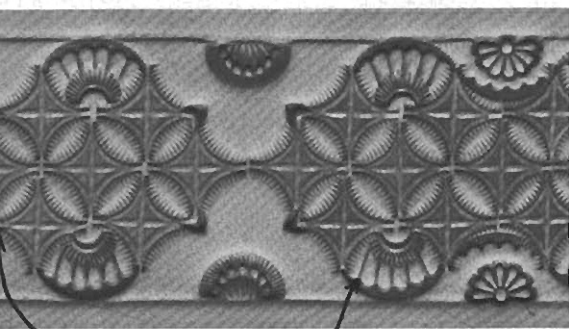


G870

V715 G529 U858 B961 G529 Z260 Z250 G870

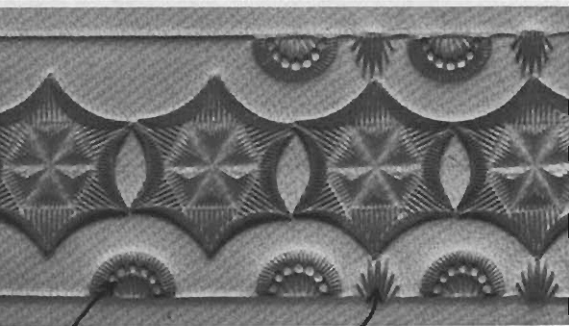
B961 G526 V406 G870 Alternate Center J547 D606 G526 B961 V745 C454 G603





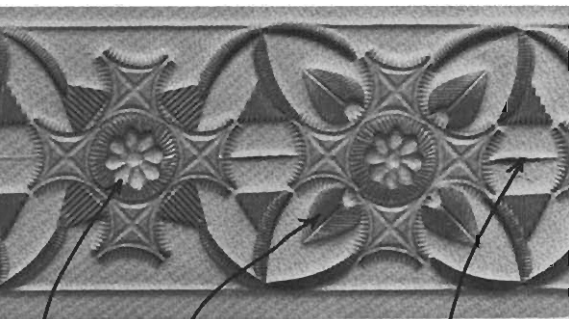
U849

Swivel Knife



D606

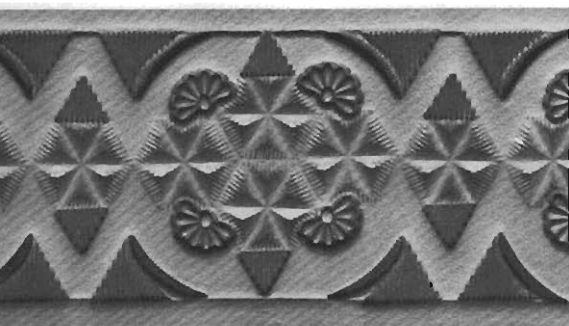
F916



J547

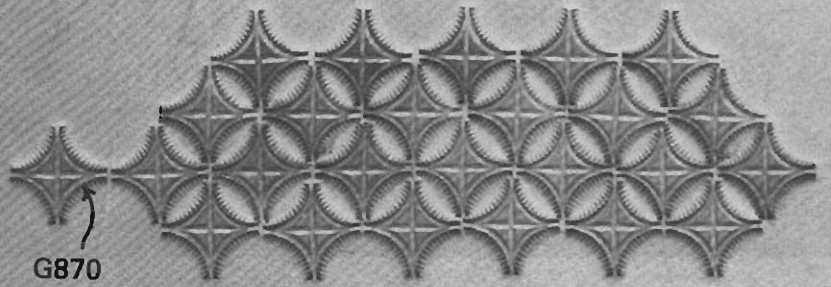
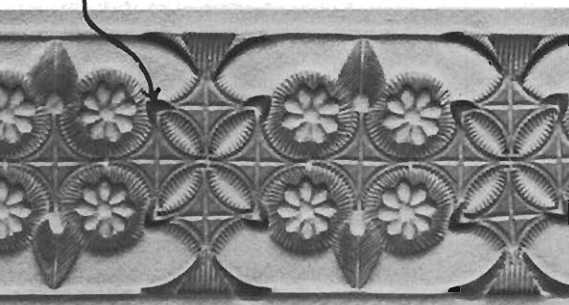
Z260

Swivel Knife

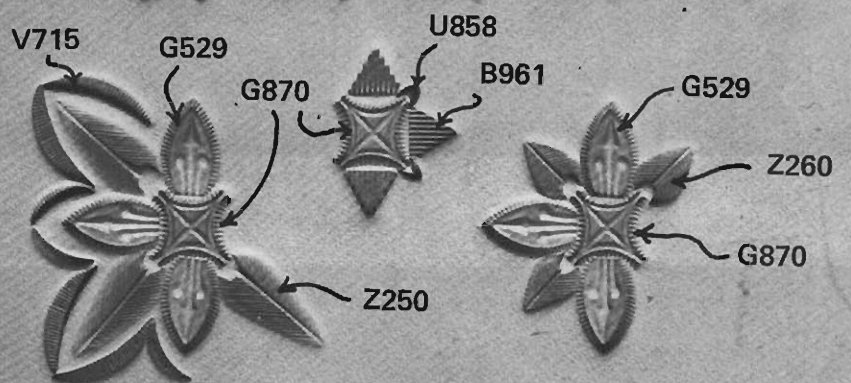
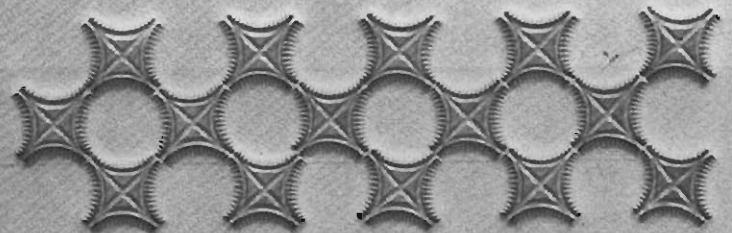
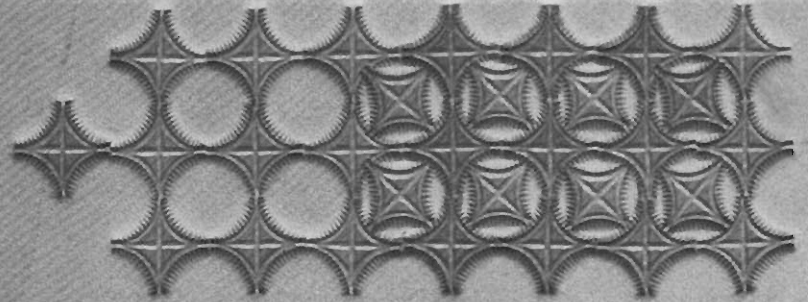


Add decorative cuts if desired.
See front of page.

U849



G870



V715

G529

G870

U858

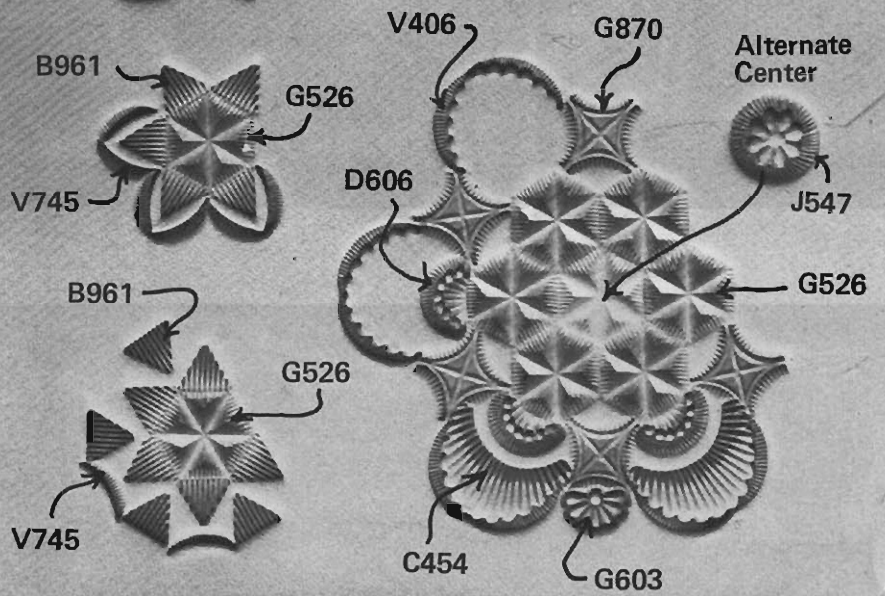
B961

G529

Z260

G870

Z250



B961

G526

V406

G870

Alternate
Center

V745

D606

J547

G526

B961

G526

V745

C454

G603