

# Vintage Pattern Series

## High Rider Holster Pattern #4417



tandyleather.com

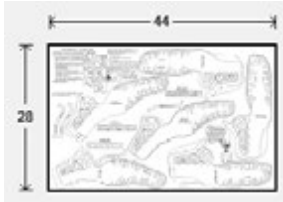


**LeathercraftLibrary.com**  
DIGITAL MEDIA FOR LEATHERCRAFTERS



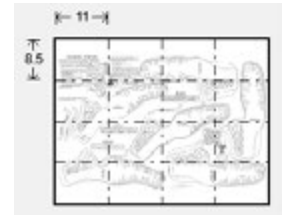
## Digital Downloads

This PDF package has been put together to give you options when it comes to printing. Some PDF file downloads may contain some documents larger than an 8-1/2" x 11" image. Pages and patterns that are larger than 8½x11 have been provided in two formats:



**Full Size:** If you would like to have a full size print out, take the full size pages to your local print shop and they can print it for you.

**Tiled:** The tiled pages give you the option of printing the larger patterns at home. You print the tiled pages and then assemble them to make the larger patterns.



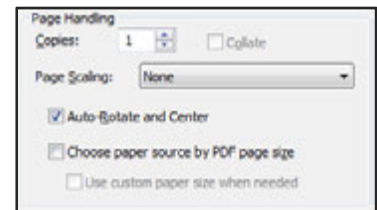
**Pattern PDF files** are typically laid out as follows: Cover (if applicable), instructions sheets (if applicable), pattern 1 – full sized, pattern 1 – tiled, pattern 2 – full sized, pattern 2 – tiled, pattern 3 – full sized, pattern 3 – tiled. ...Etc.

**Doodle Page PDF files** are typically laid out as follows: Front – full sized, front – tiled, back – full sized, back – tiled (Some Doodle Pages do not have backs).

**Craftaid PDF files** contain 1 (one) full Craftaid pattern or Craftaid pattern pack that has been converted into a tracing pattern. All pages in the PDF are full sized. This means that you may have to take the PDF to a print shop for certain oversized Craftaid patterns if your home printer cannot print the larger pages. **NOTE: These digitized patterns do not include any of the physical plastic templates (Craftaids) that may be mentioned, nor does the purchase of this PDF file imply a promise to receive any physical plastic templates (Craftaids).**

**NOTE: Digital kit patterns do not include any kit parts that they may reference.**

Please note: When printing on a home printer, use the settings seen on the image to the right in the Page Handling area of the Adobe Reader print dialogue box. If your printer is cutting edges off, set "Page Scaling" to "Shrink to Printable Area". This will, however, decrease the size of the pattern a very small amount.



**NOTE: Some patterns may reference tools, and other items no longer available.**

**NOTE: You may take this PDF file to your local print shop to have the full-size pages printed for your own personal use.**

This premium has been published by Tandy Leather Factory, 1900 South East Loop 820, Ft. Worth, TX 76140. Copyright © 2011 by Tandy Leather Factory, all rights reserved. The contents of this publication may not be reproduced either in whole or in part without the consent of the copyright owner.

Please respect the copyright by not forwarding or distributing this document.



# HIGH-RIDER HOLSTER KIT

STOCK NO. 4417

## KIT CONTAINS:

Natural Tooling Leather Parts  
Durable Dot Snap  
Waxed Thread & Needles  
Patterns & Instructions

## YOU WILL NEED:

Craftsman Cement  
Sharp Knife  
No. 8079-05 Overstitch  
No. 1211 Awl Haft  
No. 1212 Awl Blade  
No. 1777-10 Drive Punch  
No. 1777-02 Drive Punch  
No. 8076-02 Edge Beveler  
No. 7058 Snap Setter  
No. 1804 Anvil  
Lacing Pony (optional)  
Tools & Dyes for Design  
3 oz. Vegetable Tanned Lining  
Leather for Lining (optional)  
No. 1570 Head Knife or  
No. 1574 Safety Beveler (optional)



Distributed by Tandy Leather Co.  
A Division of TANDYCRAFTS INC.  
Fort Worth, TX 76107





# HIGH-RIDER HOLSTER KIT

STOCK NO. 4417



## KIT CONTAINS:

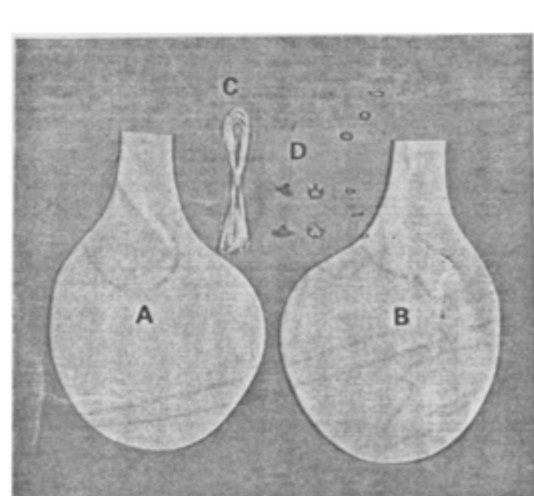
Natural Tooling Leather Parts  
Durable Dot Snap  
Waxed Thread & Needles  
Patterns & Instructions



Distributed by Tandy Leather Co.  
A Division of TANDY CRAFTS INC.  
Fort Worth, TX 76107

## YOU WILL NEED:

Craftsman Cement  
Sharp Knife  
No. 8079-05 Overstitch  
No. 1211 Awl Haft  
No. 1212 Awl Blade  
No. 1777-10 Drive Punch  
No. 1777-02 Drive Punch  
No. 8076-02 Edge Beveler  
No. 7058 Snap Setter  
No. 1804 Anvil  
Lacing Pony (optional)  
Tools & Dyes for Design  
3 oz. Vegetable Tanned Lining  
Leather for Lining (optional)  
No. 1570 Head Knife or  
No. 1574 Safety Beveler (optional)



## KIT PARTS:

A— Back for Right Hand holster  
Front for Left Hand holster  
B— Front for Right Hand holster  
Back for Left Hand holster  
C— Needle & Thread  
D— Durable Dot Snap



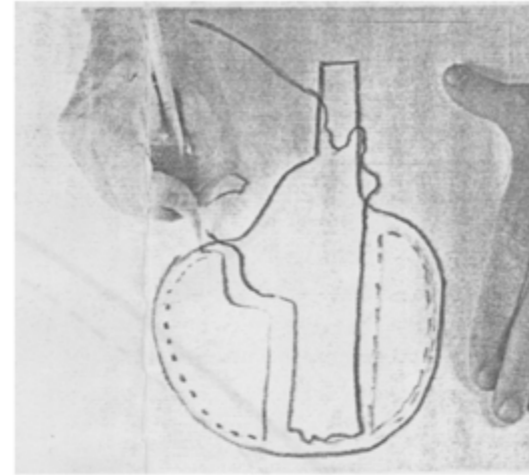
STEP 1. Select the pattern which best fits the size and shape of your pistol. There should be at least 3/8" between the stitch line and the pistol. Trace the pattern onto tracing film to preserve the paper pattern.



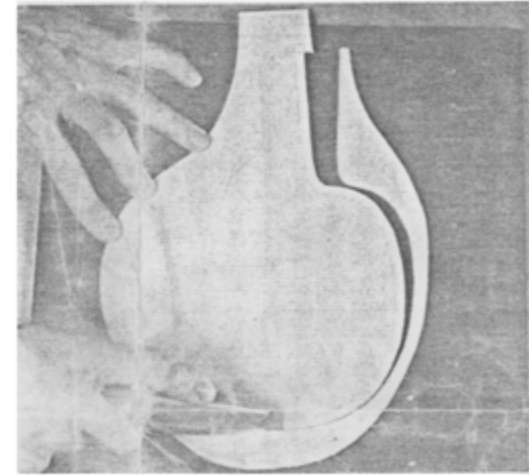
STEP 2A. Due to the many varied frame styles and types, the stitch lines may have to be repositioned to fit your particular pistol. Select the pattern with the correct barrel length and lay the pistol on the pattern, centering the frame and barrel between the existing stitch lines.



STEP 2B. Trace around the pistol, holding the pencil straight up and down.

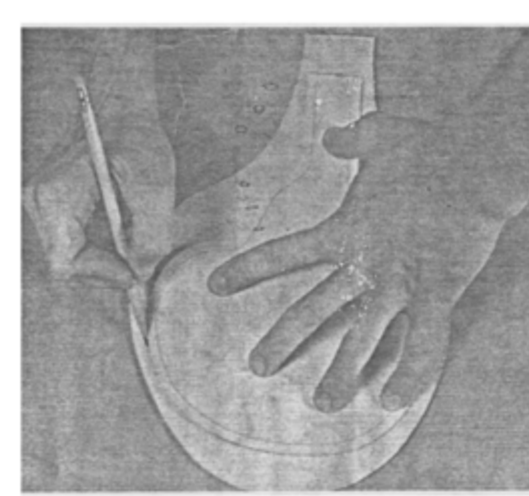


STEP 2C. Measure 3/8" from pencil line toward outside edge. Mark this line on pattern and join to the stitch line on outside edge of pattern at top and bottom as shown. This will be your adjusted stitch line. Erase the original stitch line.

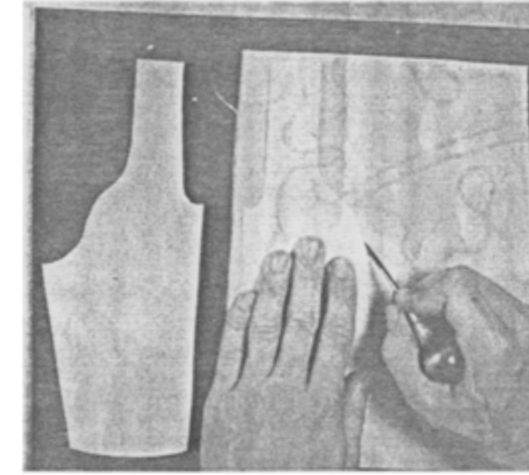


STEP 3. Place your pattern on the grain side of the front piece, (A) or (B) depending on whether you wish a left or right hand holster. Trace around the outside edge only. Cut the shape out of the leather about 1/4" outside your traced line.

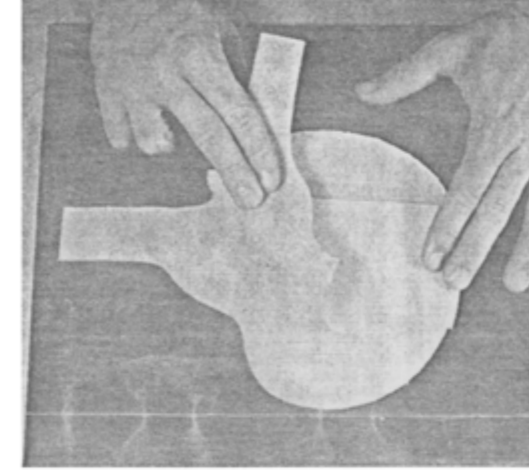
DO ALL TOOLING, DYEING AND FINISHING BEFORE GOING ON TO NEXT STEP!



STEP 4. Place front of holster over back, flesh sides together, and trace the shape of the front piece onto the back and cut the back out.



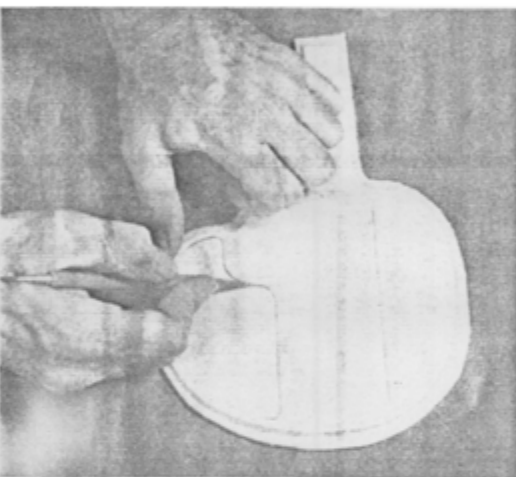
STEP 5. IF NO LINING IS DESIRED, SKIP TO STEP 8. OPTIONAL LINING: If you wish to line your holster, and it is highly recommended, use only vegetable tanned cowhide or pigskin. DO NOT use a chromium tanned leather such as suede or glove leather as a lining. The chemical salts used in the tanning processes of these leathers will react to and harm the finish of the pistol, accelerating rusting and pitting and the rubbing action of these soft leathers will remove the bluing wherever they contact the pistol. Vegetable tanned pigskin, tooling and lining kip, tooling calf or any 3 oz. vegetable tanned tooling leather will work well for your holster linings. Using the pattern which matches the holster pattern you are using, cut 1 right, 1 left.



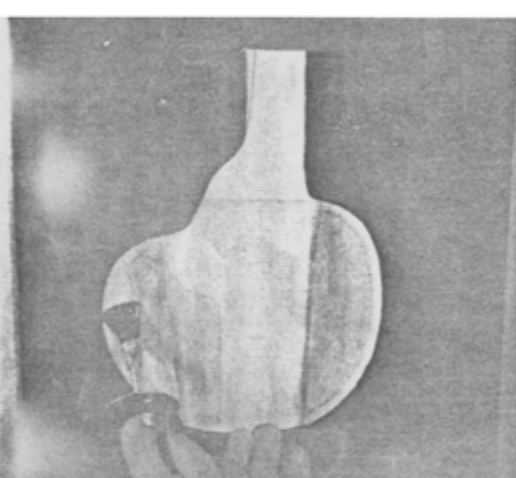
STEP 6. Position lining on holster, flesh sides together, and adhere in place using craftsman cement. Do this on the back and front pieces.



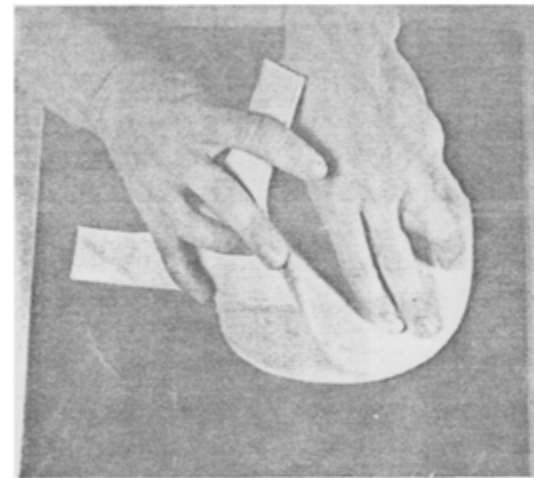
STEP 7. Skive the edges of the lining flush with the flesh side of the holster.



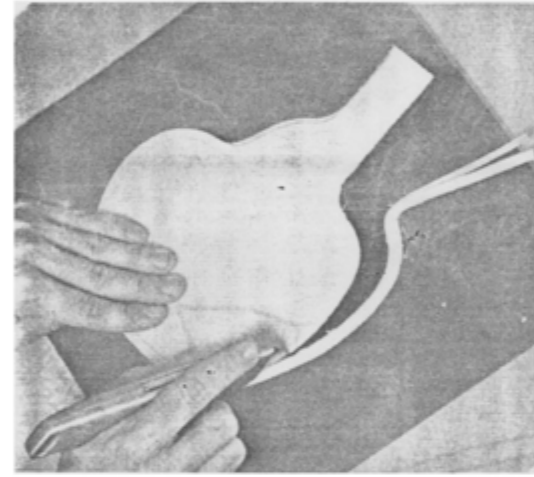
STEP 8. Lightly case the flesh side of both pieces and transfer the stitch lines as shown onto the flesh side of the leather. Allow to dry.



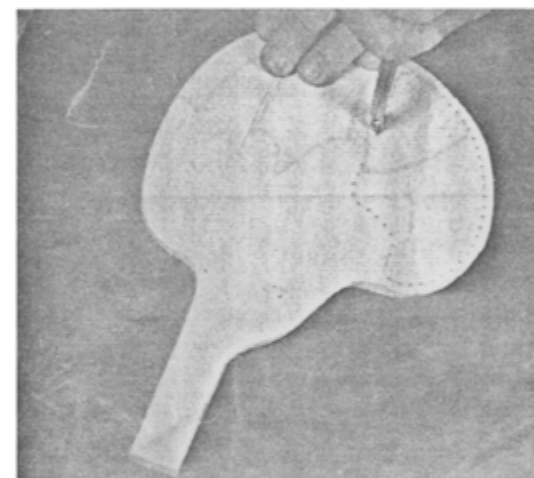
STEP 9. Apply craftsman cement to areas shown here. Be careful not to get cement past the inside stitch lines. Allow cement to dry until tacky. Repeat on other piece.



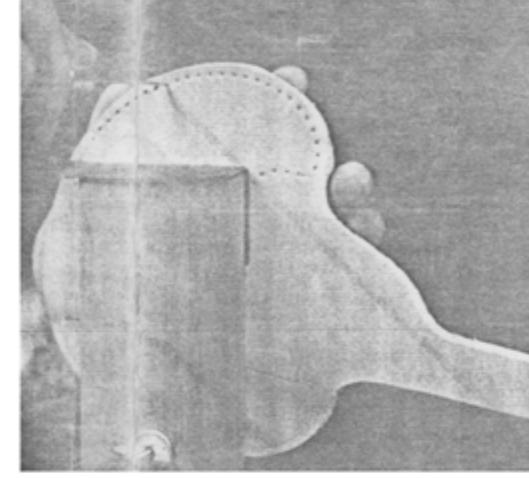
STEP 10. Adhere flesh sides of back and front together.



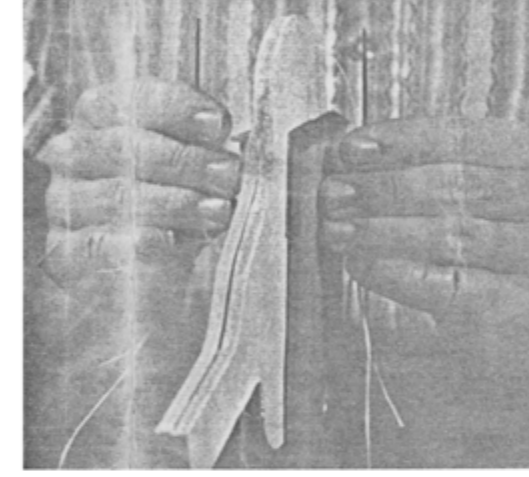
STEP 11. Now cut out the holster on line traced in Step 3 (finished shape of holster).



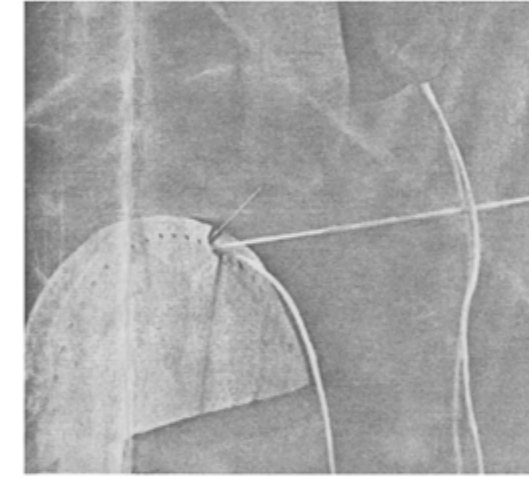
STEP 12. Trace stitching lines onto grain side of holster from adjusted pattern. Mark stitching holes with a No. 8079-05 overstitch.



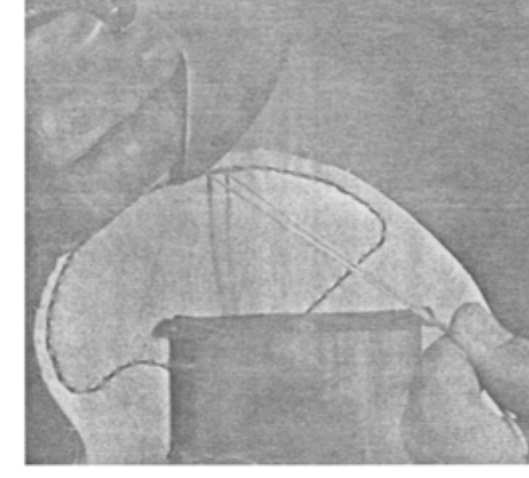
STEP 13. Using a No. 1211 awl haft and No. 1212 blade, pierce stitching holes in holster as you stitch.



STEP 14. Cut the thread in half, then place a needle on each end of one of the pieces of thread. Push one needle through hole and pull through until you have the same amount of thread on each side of the leather.



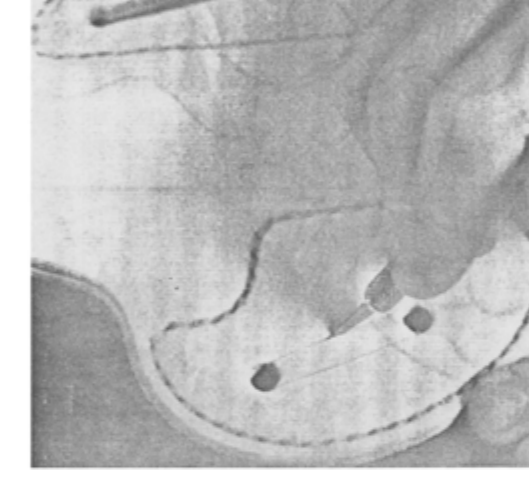
STEP 15. Push thread on front of holster through next hole and pull through. Push thread on back of holster through same hole, being sure to go OVER the first thread. (DO NOT PIERCE THE FIRST THREAD.) Pull thread from the back side of the holster through and pull both threads tight. Repeat this procedure on each hole until you reach the beginning hole.



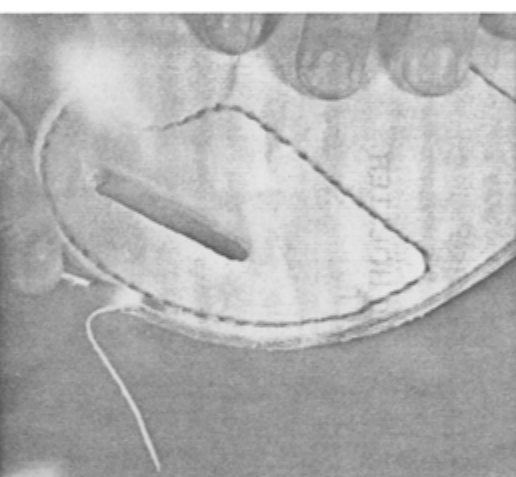
STEP 16. Stitch a few stitches past the beginning hole to lock the ends of the thread. Bring both threads to the back of the holster and trim off close to the leather. Repeat Steps 13 through 16 on stitching lines on other side of holster.



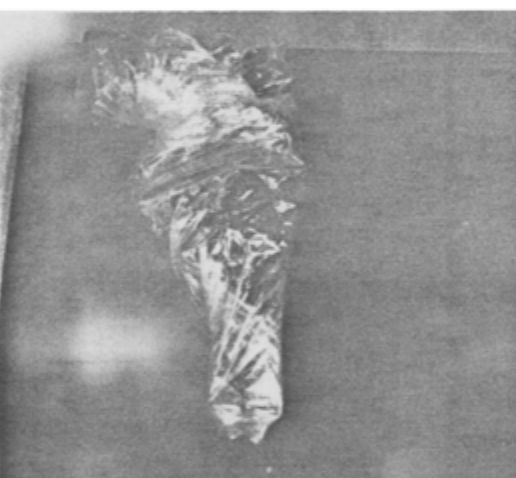
STEP 17. When you have finished stitching, run the overstitch wheel back over stitching, applying pressure to set the stitches.



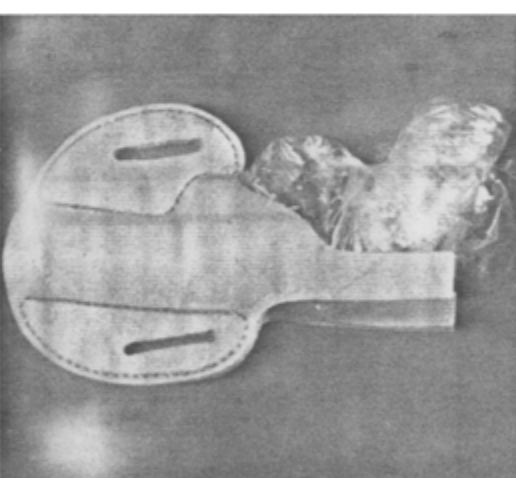
STEP 18. Locate and mark belt slots by positioning the holster where you wish it to ride on the belt. Cut slots slightly wider than your belt as shown, by punching holes with a No. 10 drive punch at each end of the slot and cutting the slot out with a sharp knife.



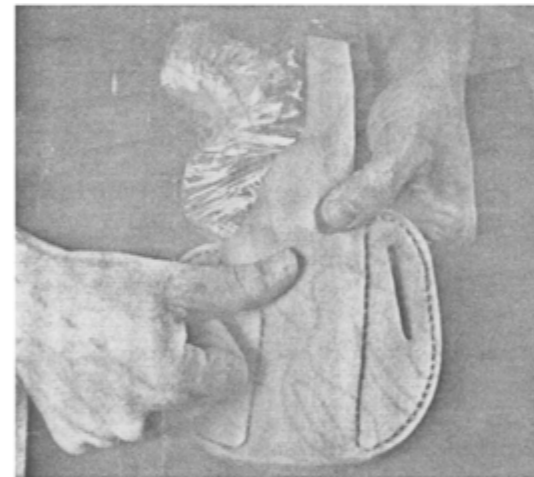
STEP 19. Using a No. 2 edge beveler, bevel edges on both sides of the holster.



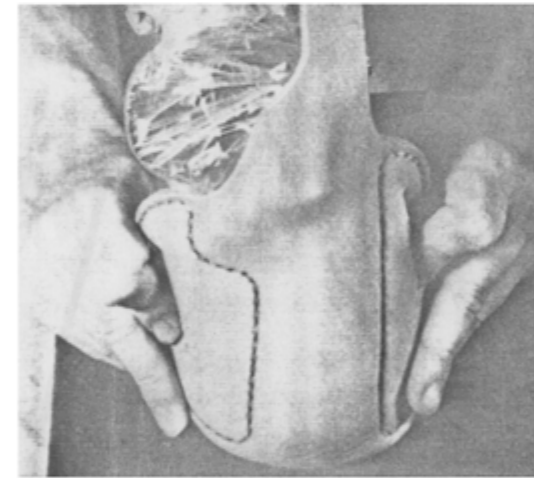
STEP 20. Spray your pistol with Tryflox, W D-40 or other water inhibiting lubricant and wrap the pistol in plastic wrap. Generally two or three wraps are sufficient.



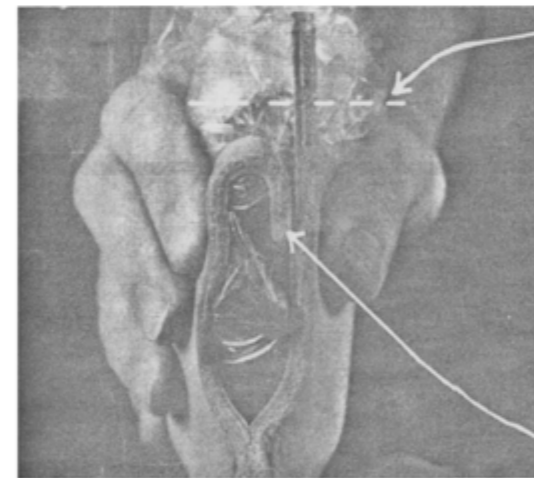
STEP 21. Completely wet holster, inside and out by submerging in water for 15 to 30 seconds. Push wrapped pistol into the holster. A tight fit is desired to hold the pistol firmly without any side to side movement.



STEP 22. With your thumbs, press the leather around the pistol, shaping the leather to the pistol. As the leather dries it will retain this shape.

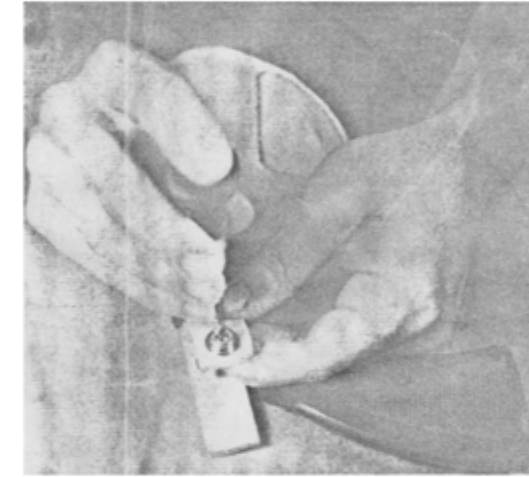


STEP 23. Shape the curve of holster to fit the body and pull the belt loops into proper position by opening slots with your thumbs.



STEP 24. Position and trim the safety thumb strap to correct length for your pistol. Allow at least 1/2" extension on thumb release strap. Remove the pistol from the holster and set holster aside to dry thoroughly for about 24 hours.

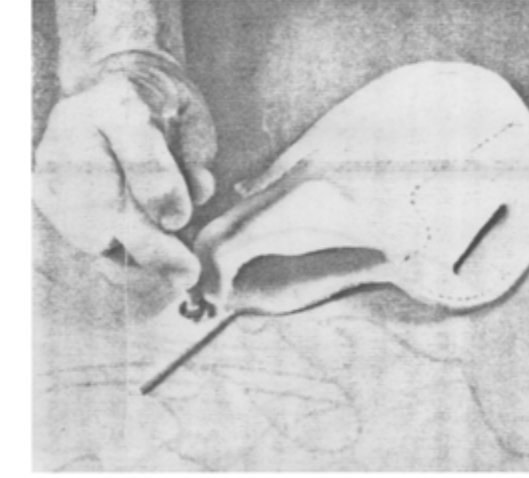
CORRECT LENGTH



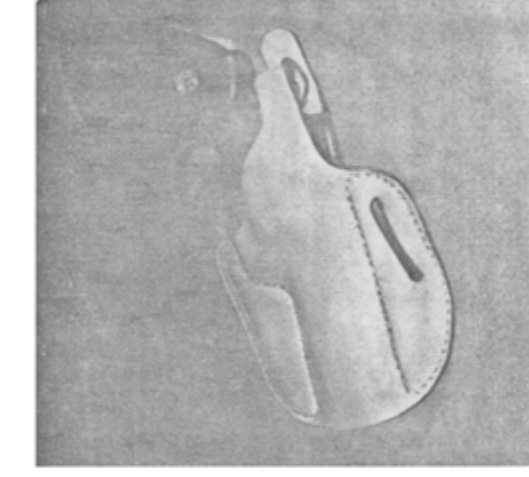
STEP 25. When holster is thoroughly dry, mark position of eyellet and stud of snap on strap which covers the hammer of pistol. Punch snap hole with No. 2 drive punch. Push stud through hole from the flesh side. Place the eyellet over the stud on grain side and place assembly on a hard, solid riveting surface. Place No. 7058 snap setter in center of eyellet and strike sharply with a mallet until the snap is set.



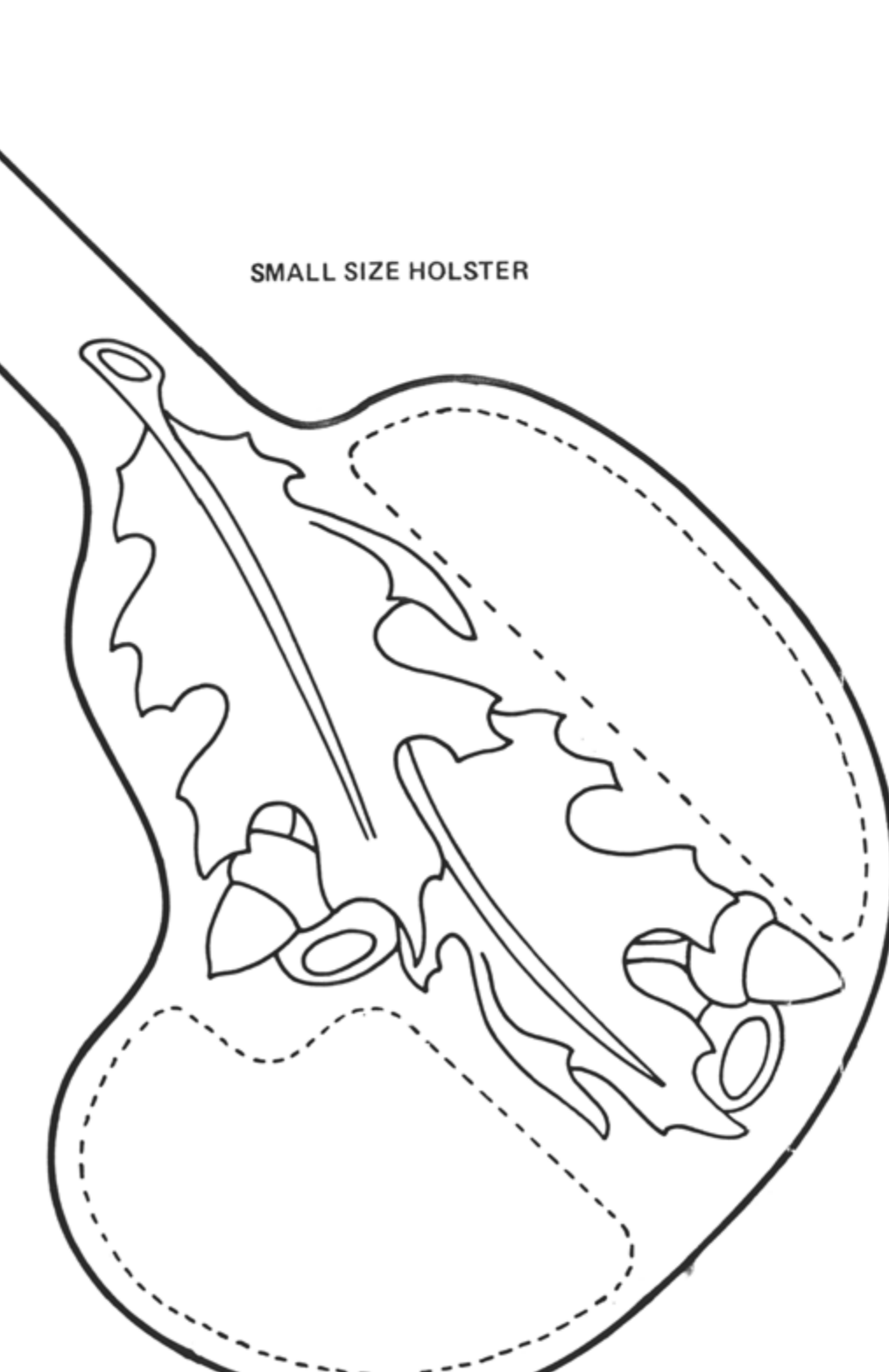
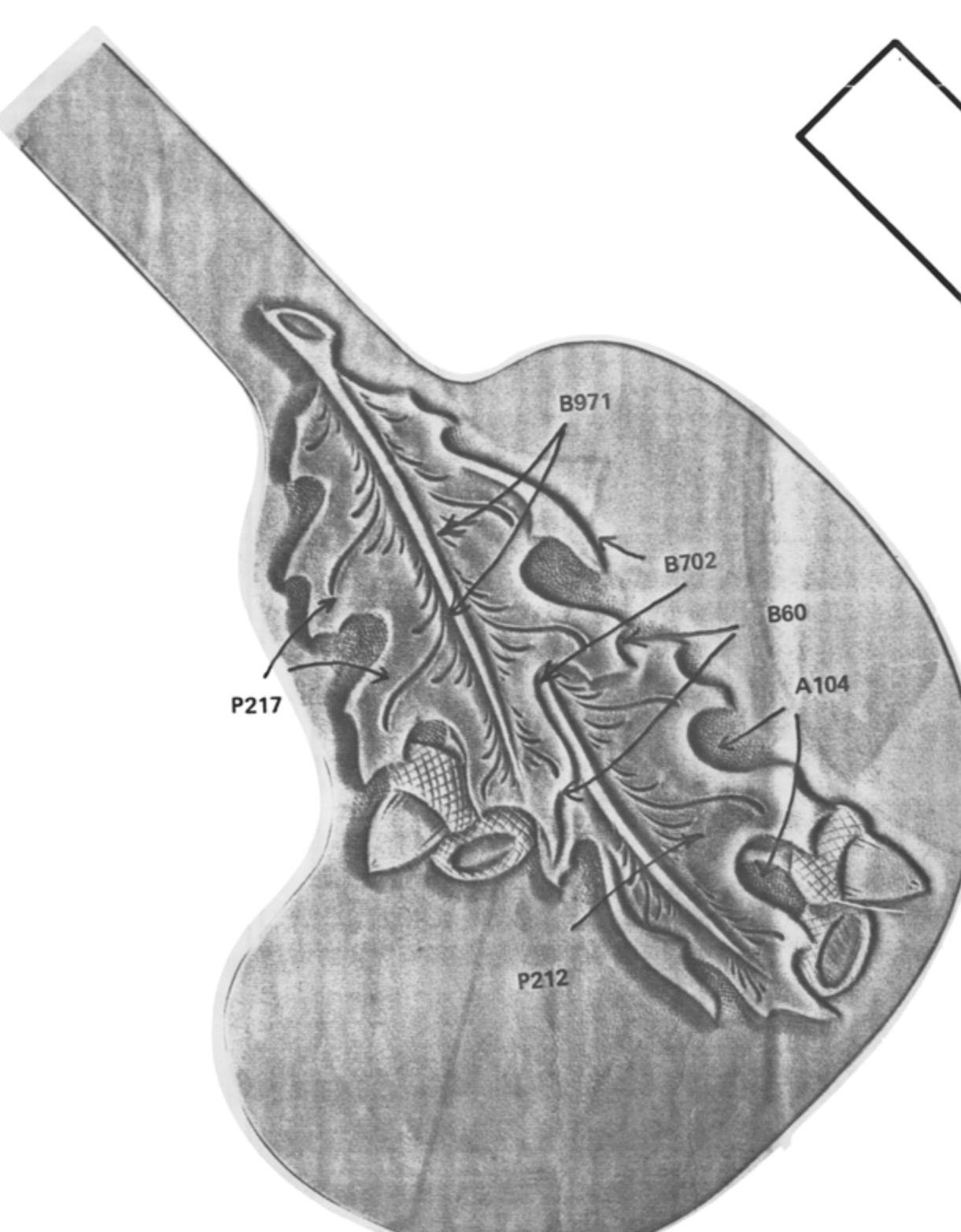
STEP 26. Wrap hammer strap snugly around hammer. Locate and mark position of button and socket of snap on thumb release strap and punch hole with No. 2 drive punch.



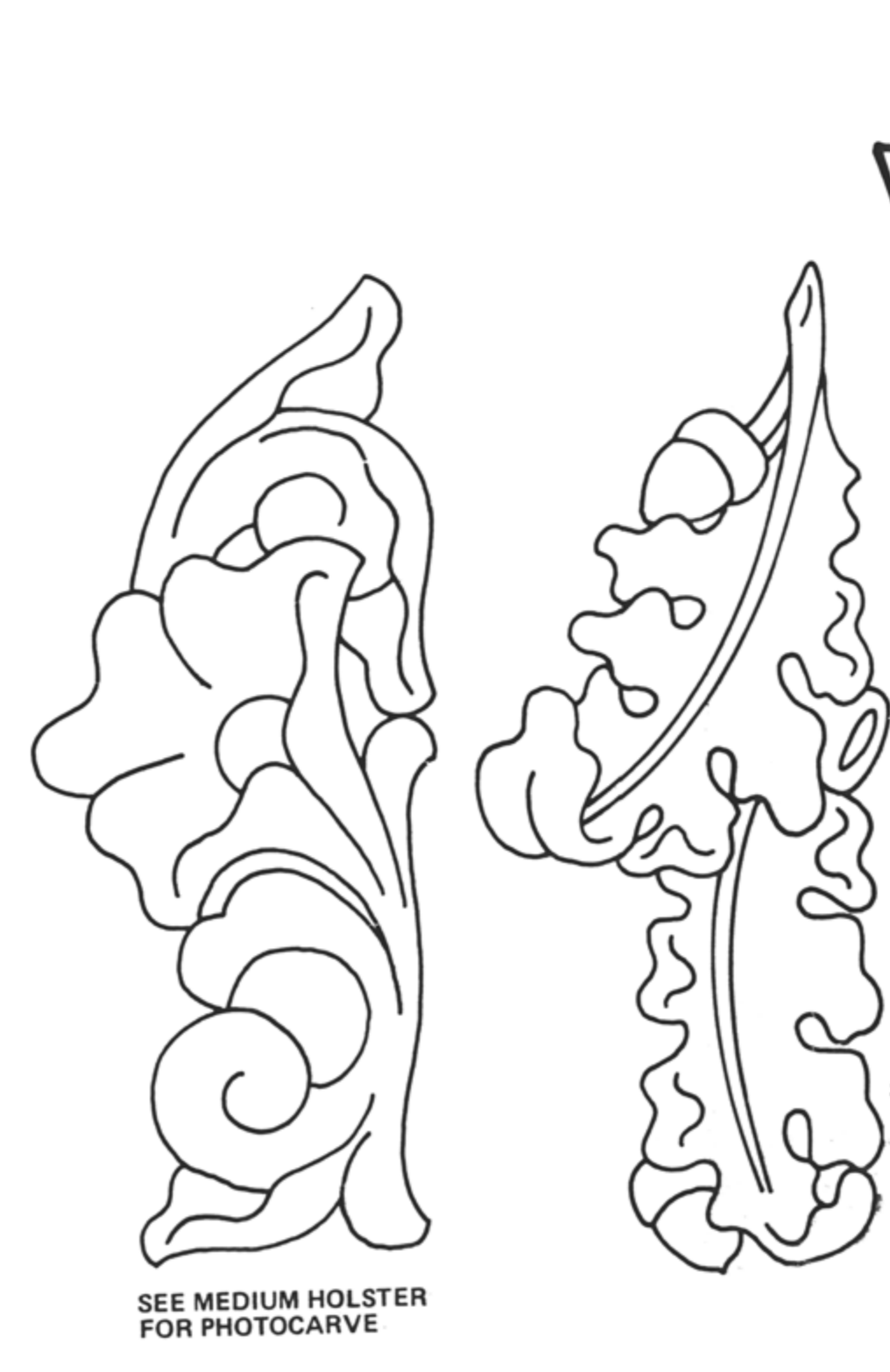
STEP 27. Push button of snap through hole on thumb release strap from grain side. Place socket over button on flesh side of thumb release strap. Place No. 1804 anvil under button on a hard, solid riveting surface. Place No. 7058 snap setter in center of socket and strike sharply with a mallet until snap is set.



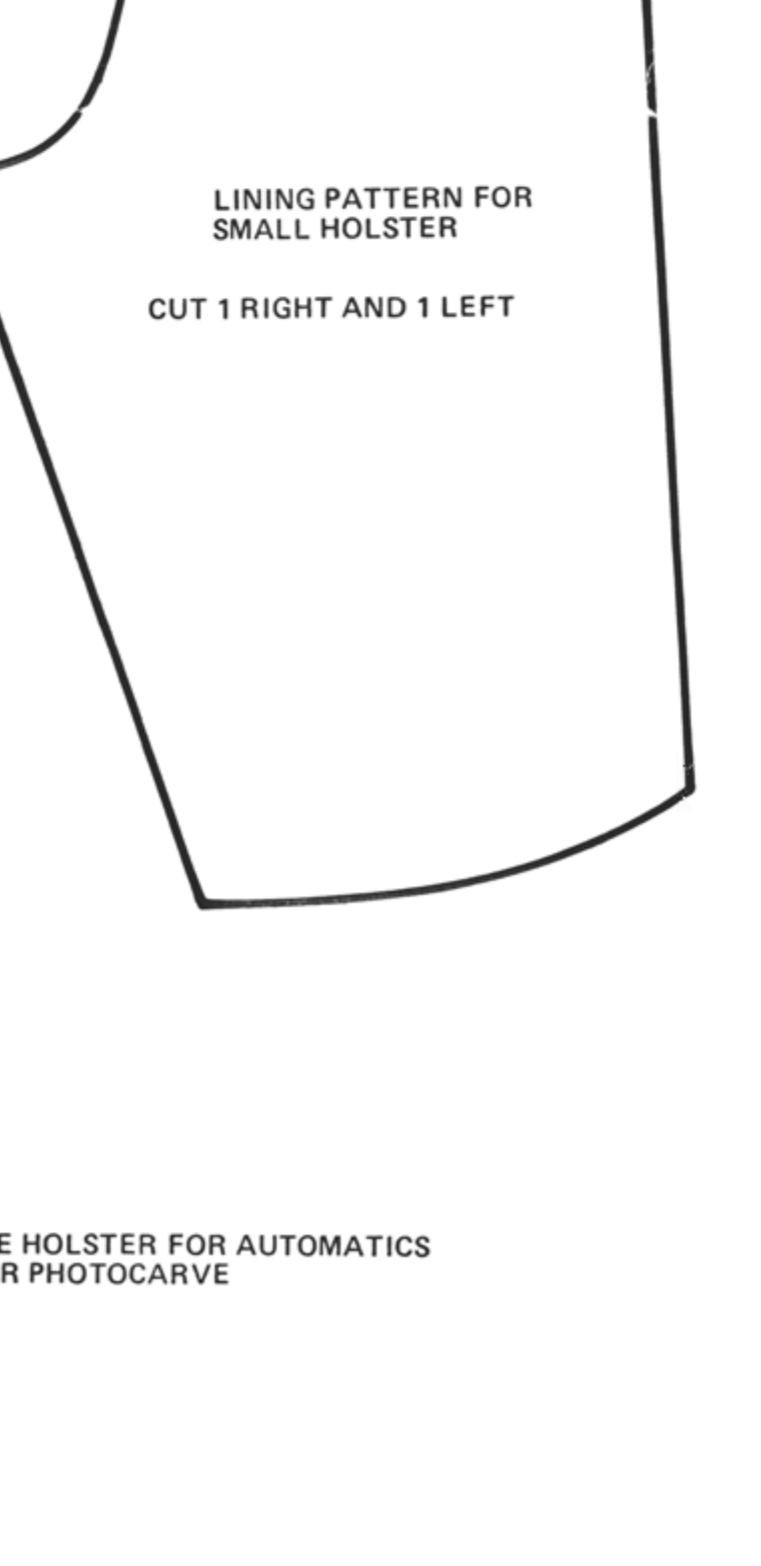
STEP 28. Slick all outside edges with a piece of coarse fabric, such as denim and if you wish you may finish the edges with Edge Coat Edge Dressing. Friction inside the holster may be reduced by rubbing a gun lubricant such as Rig or Gunslick on the inside surfaces of the holster.



SMALL SIZE HOLSTER



SEE MEDIUM HOLSTER FOR PHOTOCARVE



LINING PATTERN FOR SMALL HOLSTER

CUT 1 RIGHT AND 1 LEFT

SEE HOLSTER FOR AUTOMATICS FOR PHOTOCARVE



# HIGH-RIDER HOLSTER KIT

STOCK NO. 4417

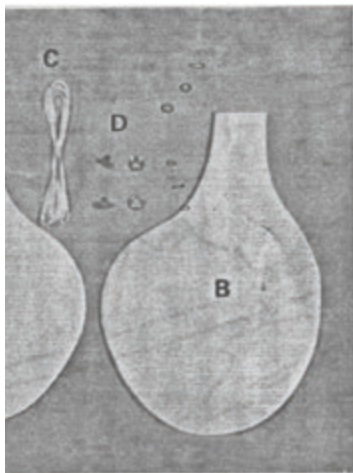


KIT CONTAINS:

YOU WILL NEED:







**KIT PARTS:**

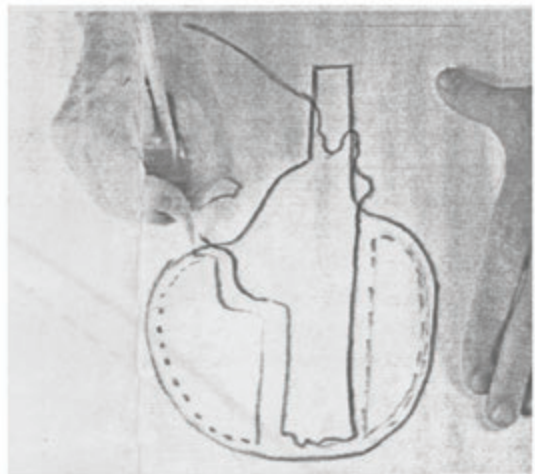
- A— Back for Right Hand holster  
Front for Left Hand holster
- B— Front for Right Hand holster  
Back for Left Hand holster
- C— Needle & Thread
- D— Durable Dot Snap



**STEP 2B.** holding the p



**STEP 1.** Select the pattern which best fits the size and shape of your pistol. There should be at least 3/8" between the stitch line and the pistol. Trace the pattern onto tracing film to preserve the paper pattern.



**STEP 2C.** M line toward line on patt line on outs and bottom your adjust original stitc



Trace around the pistol, pencil straight up and down.



**STEP 4.** Place front of holster over back, flesh sides together, and trace the shape of the front piece onto the back and cut the back out.

Measure 3/8" from pencil outside edge. Mark this with a pencil and join to the stitch line edge of pattern at top as shown. This will be the edge of the stitch line. Erase the pencil line.



**STEP 5. IF NO LINING IS DESIRED, SKIP TO STEP 8.**

**OPTIONAL LINING:** If you wish to line your holster, and it is highly recommended, use only vegetable tanned cowhide or pigskin. **DO NOT** use a chromium tanned leather such as suede or glove leather as a lining. The chemical salts used in the tanning processes of these leathers will react to and harm the finish of the pistol, accelerating rusting and pitting and the rubbing action of these soft leathers will remove the blueing wherever they contact the pistol. Vegetable tanned pigskin, tooling and lining kip, tooling calf or any 3 oz. vegetable tanned tooling leather will work well for your holster linings. Using the pattern which matches the holster pattern you are using, cut 1 right, 1 left.



**KIT CONTAINS:**  
Natural Tooling Leather Parts  
Durable Dot Snap  
Waxed Thread & Needles  
Patterns & Instructions

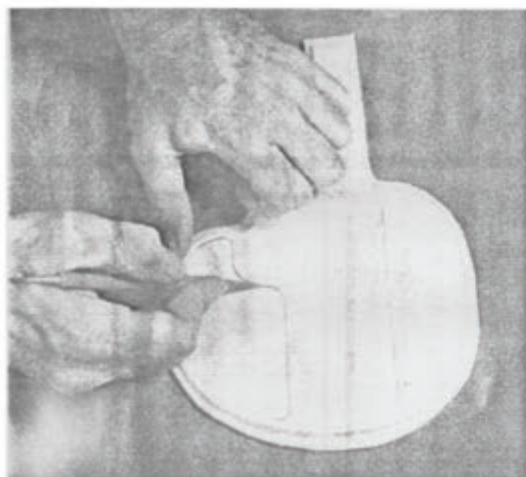


Distributed by Tandy Leather Co.  
A Division of TANDYCRAFTS INC.  
Fort Worth, TX 76107

Craftsman Cement  
Sharp Knife  
No. 8079-05 Overstitch  
No. 1211 Awl Haft  
No. 1212 Awl Blade  
No. 1777-10 Drive Punch  
No. 1777-02 Drive Punch  
No. 8076-02 Edge Beveler  
No. 7058 Snap Setter  
No. 1804 Anvil  
Lacing Pony (optional)  
Tools & Dyes for Design  
3 oz. Vegetable Tanned Lining  
Leather for Lining (optional)  
No. 1570 Head Knife or  
No. 1574 Safety Beveler (optional)



**STEP 7.** Skive the edges of the lining flush with the flesh side of the holster.



**STEP 8.** Lightly case the flesh side of both pieces and transfer the stitch lines as shown onto the flesh side of the leather. Allow to dry.

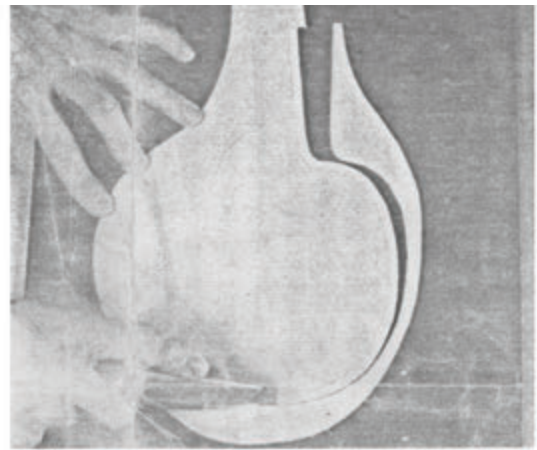


**STEP 9.** Apply craftsman cement to areas shown here. Be careful not to get cement past the inside stitch lines. Allow cement to dry until tacky. Repeat on other piece.





**STEP 2A.** Due to the many varied frame styles and types, the stitch lines may have to be repositioned to fit your particular pistol. Select the pattern with the correct barrel length and lay the pistol on the pattern, centering the frame and barrel between the existing stitch lines.

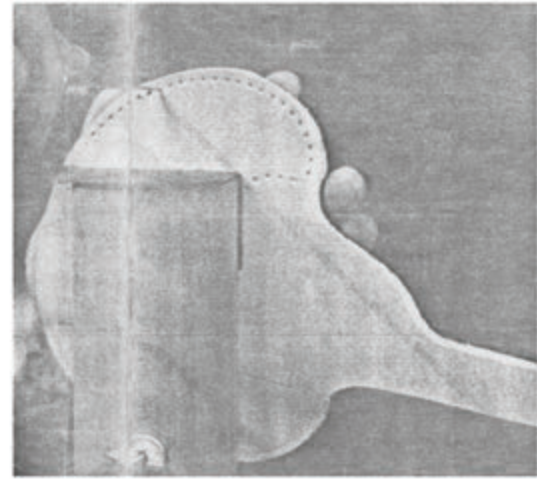


**STEP 3.** PI grain side of (B) depending left or right of the outside out of the I your traced

**DO ALL THE FINISHING NEXT STEP**



**STEP 10.** Adhere flesh sides of back and front together.



**STEP 13.** U and No. 12 holes in holes



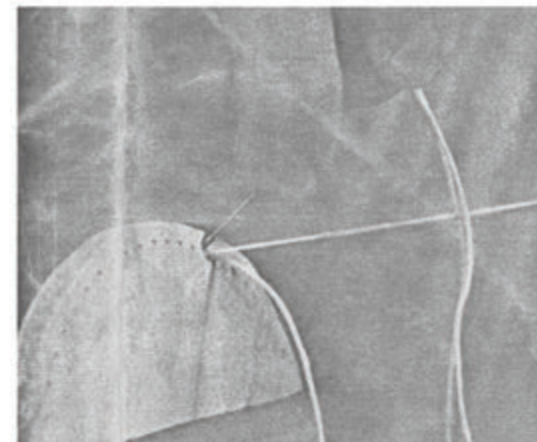
**STEP 11.** Now cut out the holster on line traced in Step 3 (finished shape of holster).



**STEP 14.** C place a needle through the pieces of the holster you have traced on each side



**STEP 12.** Trace stitching lines onto grain side of holster from adjusted pattern. Mark stitching holes with a No. 8079-05 overstitch.



**STEP 15.** holster through. Pull thread through to go OVI NOT PIERCE Pull thread through tight. Repeat hole until hole.



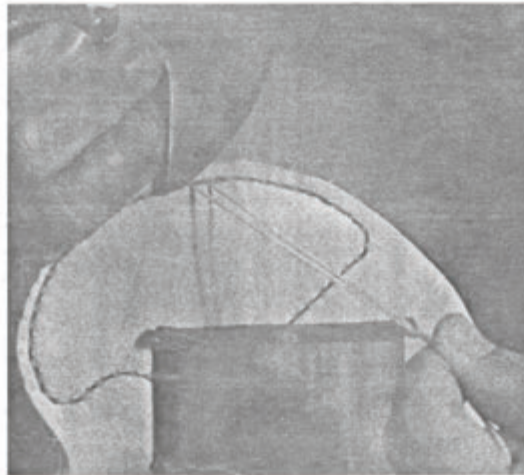
Place your pattern on the leather front piece, (A) or B, depending on whether you wish a hand holster. Trace around edge only. Cut the shape out of the leather about 1/4" outside line.



**STEP 6.** Position lining on holster, flesh sides together, and adhere in place using craftsman cement. Do this on the back and front pieces.

**DOLING, DYEING AND BEFORE GOING ON TO**

Using a No. 1211 awl haft with a 12 blade, pierce stitching holes as you stitch.



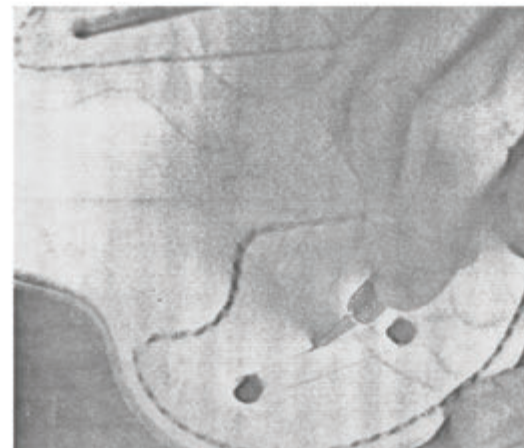
**STEP 16.** Stitch a few stitches past the beginning hole to lock the ends of the thread. Bring both threads to the back of the holster and trim off close to the leather. Repeat Steps 13 through 16 on stitching lines on other side of holster.

Cut the thread in half, then slide on each end of one of the threads. Push one needle through and pull through until the same amount of thread is on each side of the leather.



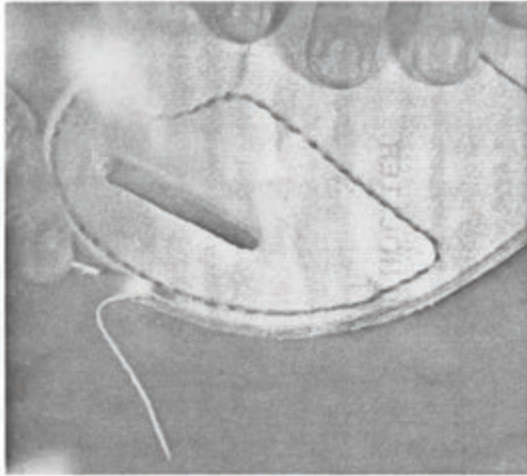
**STEP 17.** When you have finished stitching, run the overstretch wheel back over stitching, applying pressure to set the stitches.

Push thread on front of leather through next hole and pull through. Push thread on back of leather through same hole, being sure to catch the first thread. (DO NOT CUT THE FIRST THREAD.) From the back side of the leather, push and pull both threads at this procedure on each hole as you reach the beginning



**STEP 18.** Locate and mark belt slots by positioning the holster where you wish it to ride on the belt. Cut slots slightly wider than your belt as shown, by punching holes with a No. 10 drive punch at each end of the slot and cutting the slot out with a sharp knife.

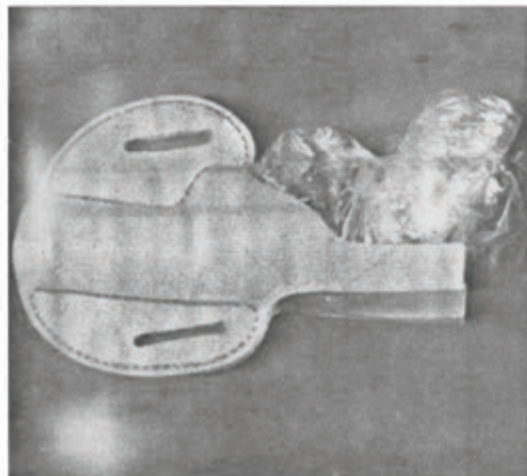




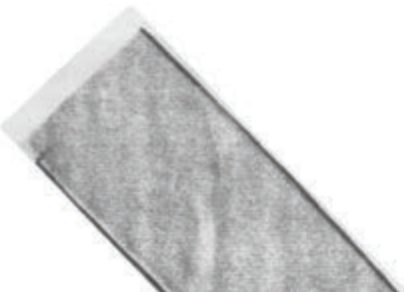
**STEP 19.** Using a No. 2 edge beveler, bevel edges on both sides of the holster.



**STEP 20.** Spray your pistol with Tryflon, W D-40 or other water inhibiting lubricant and wrap the pistol in plastic wrap. Generally two or three wraps are sufficient.



**STEP 21.** Completely wet holster, inside and out by submerging in water for 15 to 30 seconds. Push wrapped pistol into the holster. A tight fit is desired to hold the pistol firmly without any side to side movement.



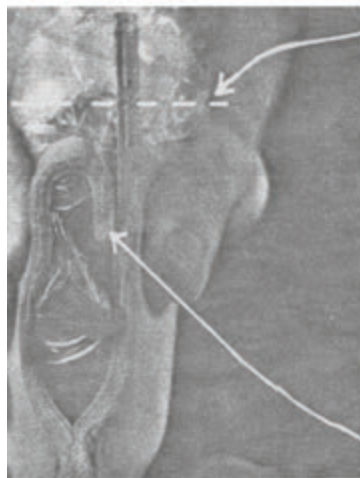




**STEP 22.** With your thumbs, press the leather around the pistol, shaping the leather to the pistol. As the leather dries it will retain this shape.



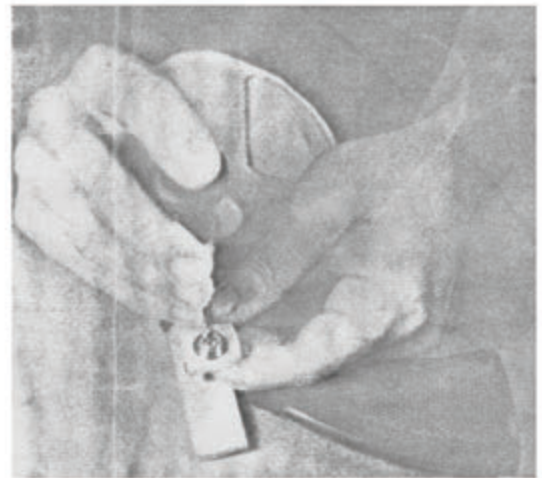
**STEP 23.** Shape the curve of holster to fit the body and pull the belt loops into proper position by opening slots with your thumbs.



**TRIM HERE**

**STEP 24.** Position and trim the safety thumb snap strap to correct length for your pistol. Allow at least 1/2" extension on thumb release strap. Remove the pistol from the holster and set holster aside to dry thoroughly for about 24 hours.

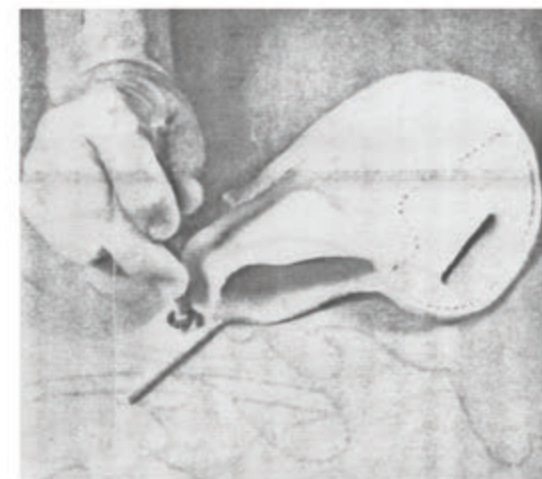
**CORRECT LENGTH**



**STEP 25.** When dry, mark the position of snap on hammer with No. 1 through hole of the eyelet and place riveting sur setter in center sharply with set.



**STEP 26.** Position around the hole in the position of on thumb with No. 2



**STEP 27.** Place hole on the side. Place side of the 1804 anvil solid rivet snap setter strike sharply is set.





When holster is thoroughly positioned, position the eyelet and stud strap which covers the pistol. Punch snap hole with drive punch. Push stud through hole from the flesh side. Place stud over the stud on grain side assembly on a hard, solid surface. Place No. 7058 snap enter into eyelet and strike with a mallet until the snap is

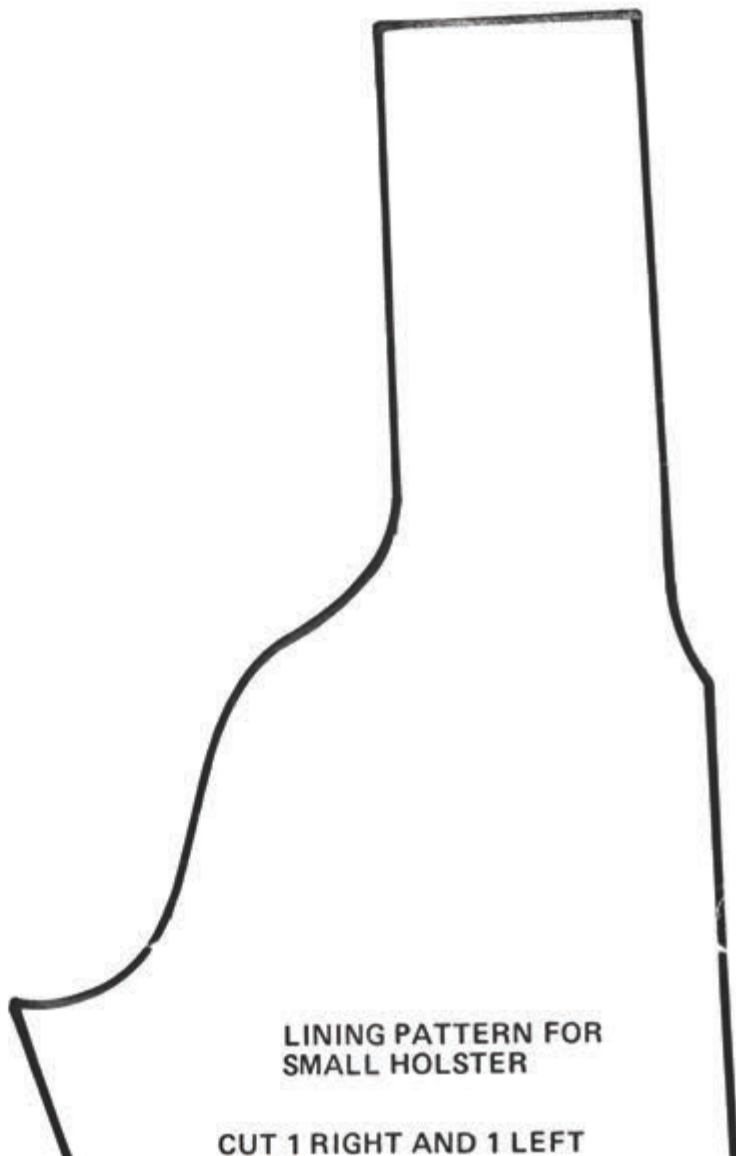


**STEP 28.** Slick all outside edges with a piece of coarse fabric, such as denim and if you wish you may finish the edges with Edge Coat Edge Dressing. Friction inside the holster may be reduced by rubbing a gun lubricant such as Rig or Gunslick on the inside surfaces of the holster.

Wrap hammer strap snugly around hammer. Locate and mark position of button and socket of snap release strap and punch hole with drive punch.



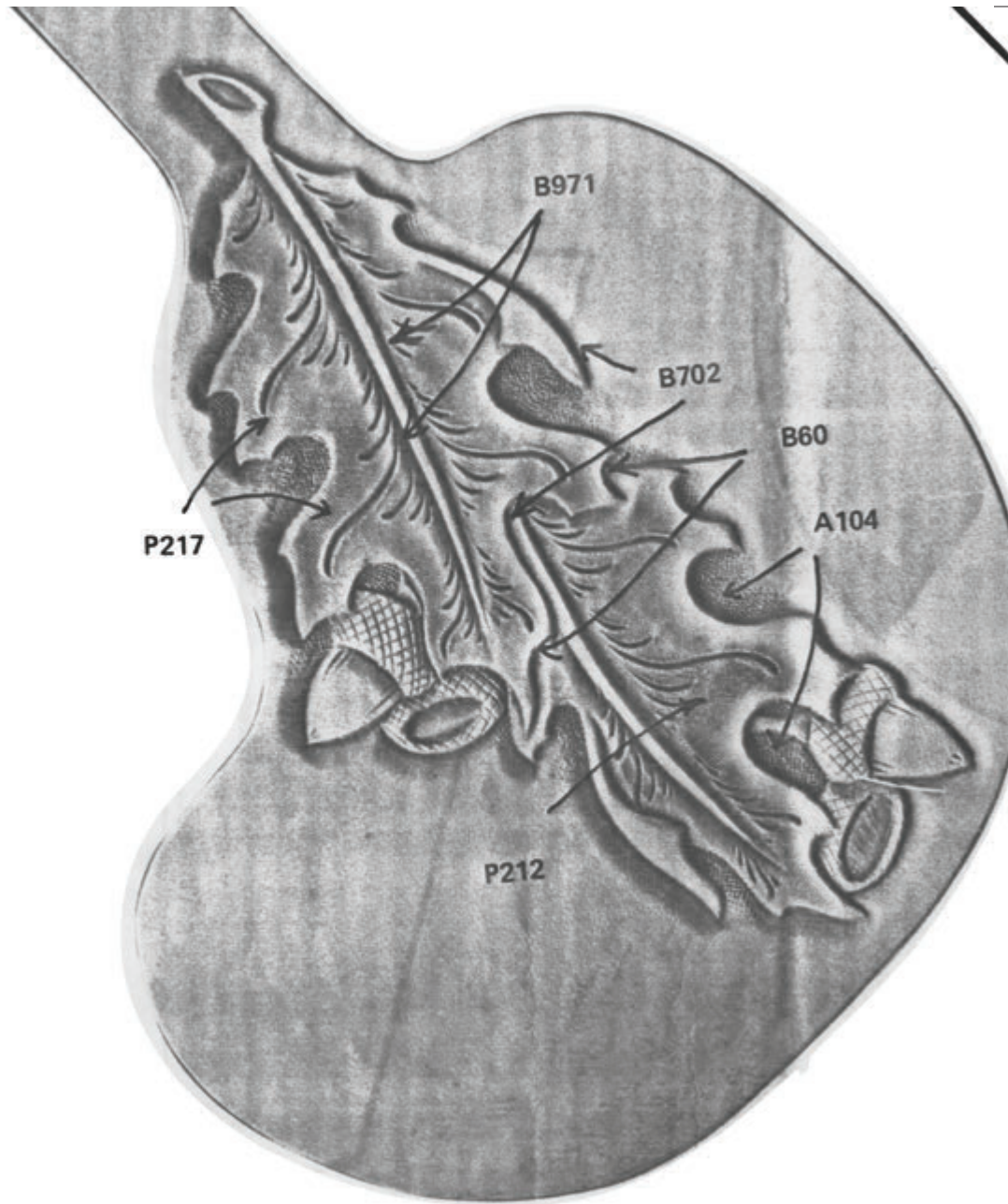
Push button of snap through hole in hammer release strap from grain side into socket over button on flesh side of hammer release strap. Place No. 7058 snap under button on a hard, solid surface. Place No. 7058 stud in center of socket and strike with a mallet until snap



LINING PATTERN FOR SMALL HOLSTER

CUT 1 RIGHT AND 1 LEFT

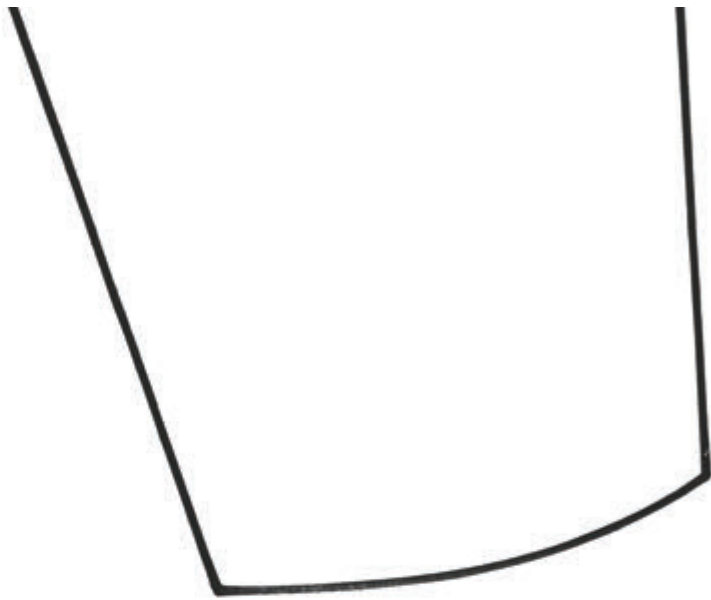
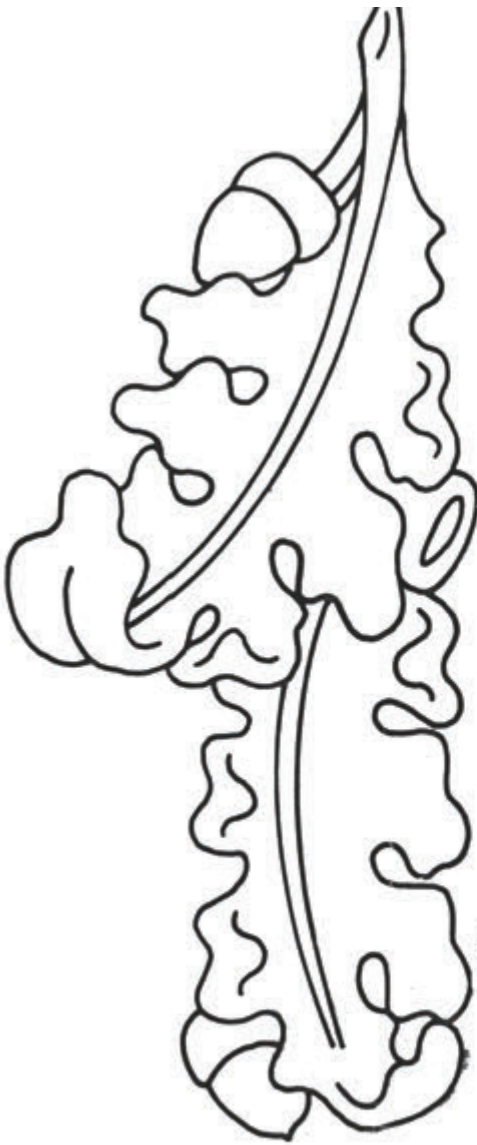






SEE MEDIUM HOLSTE  
FOR PHOTOCARVE

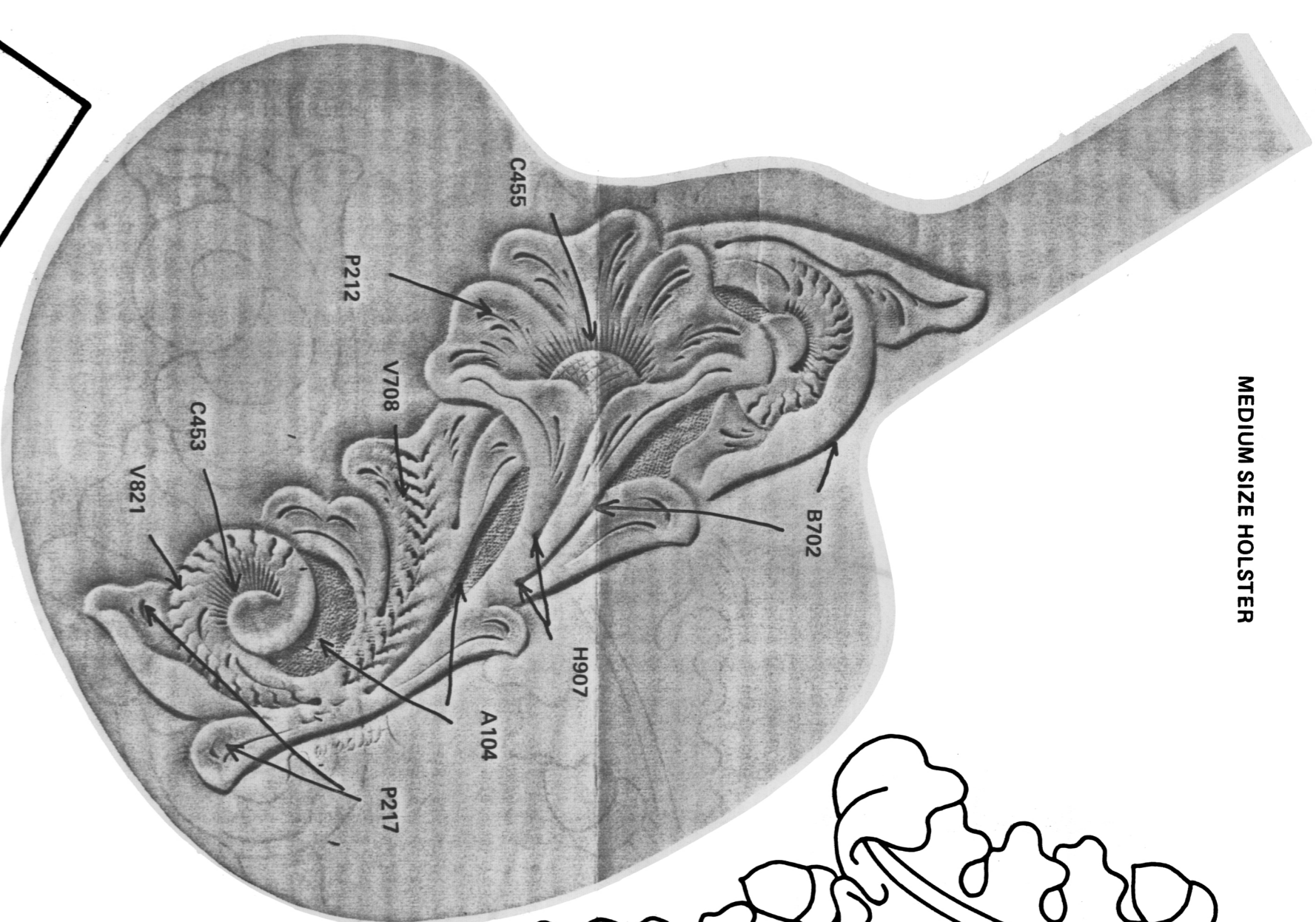




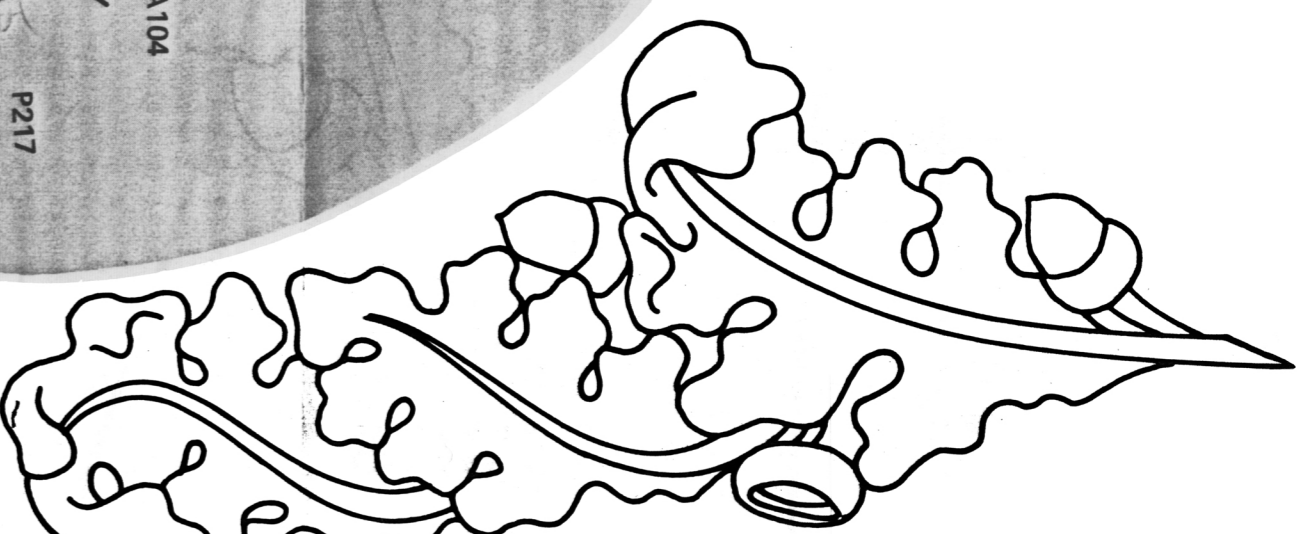
SEE HOLSTER FOR AUTOMATICS  
FOR PHOTOCARVE



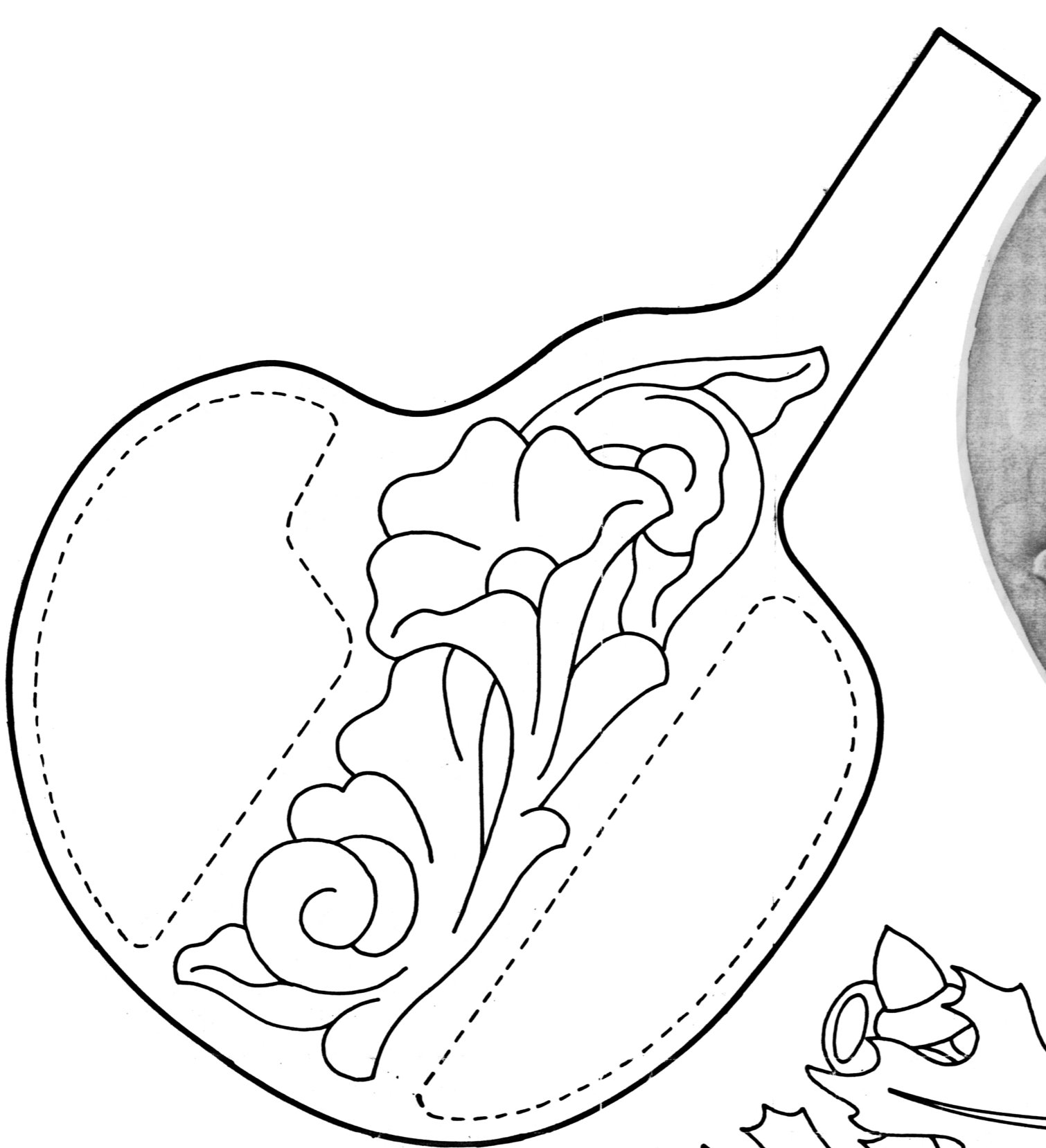
MEDIUM SIZE HOLSTER



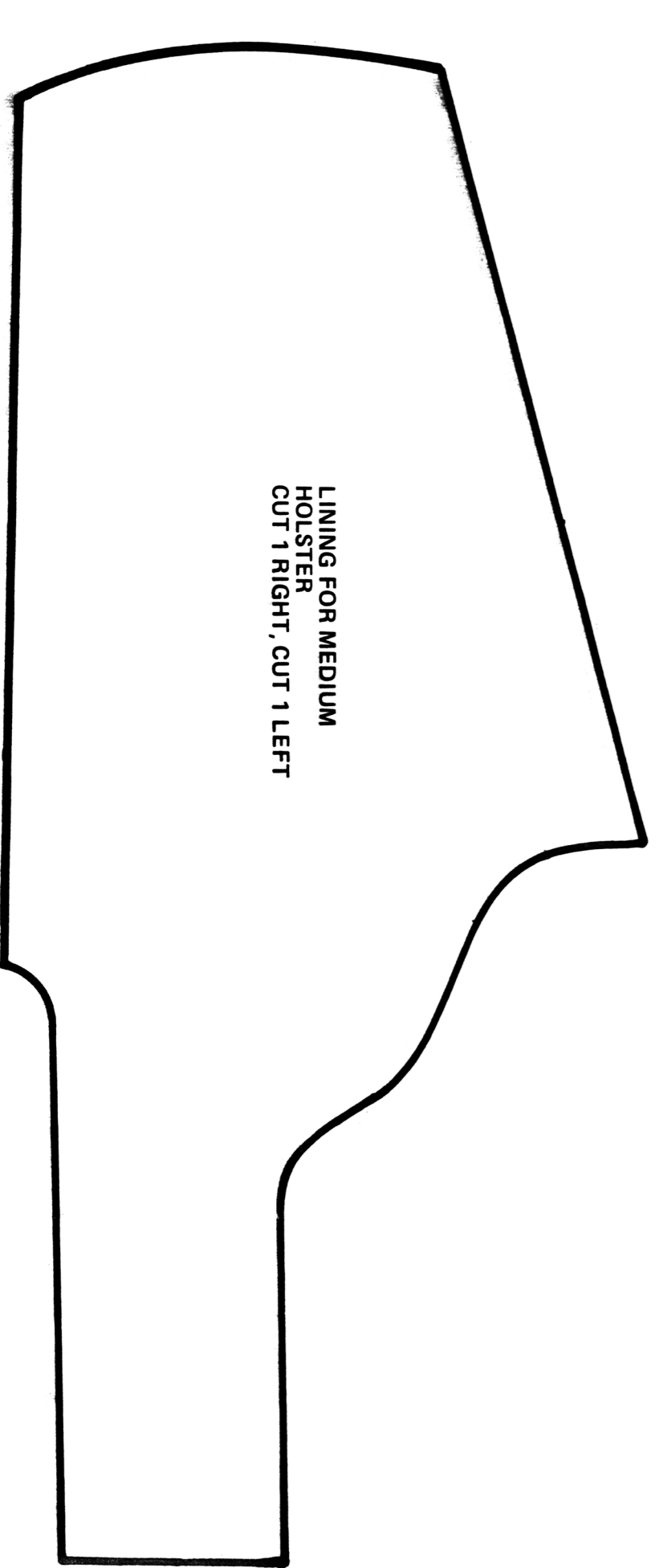
SEE HOLSTER FOR AUTOMATICS FOR PHOTOCARVE



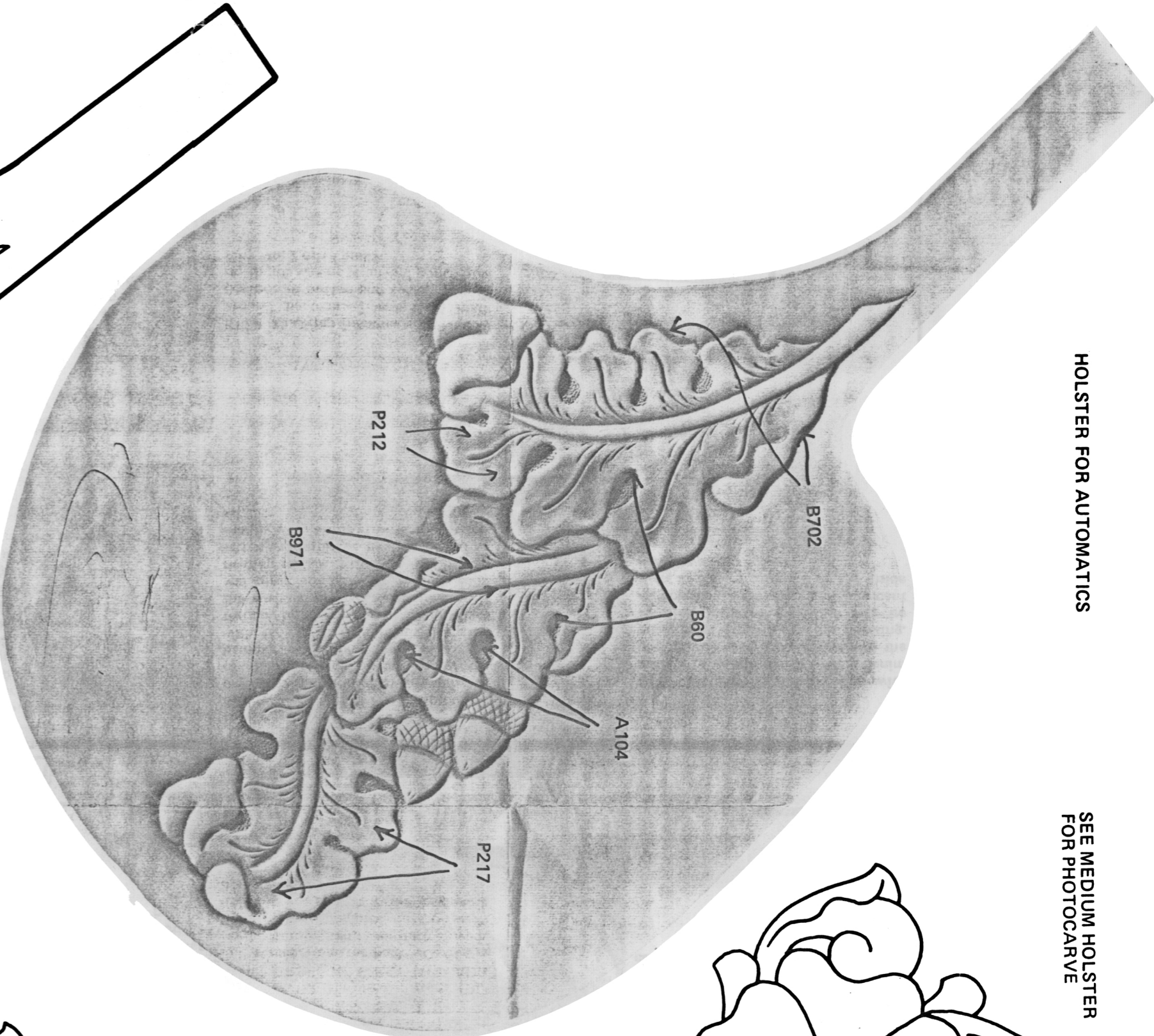
SEE SMALL HOLSTER FOR PHOTOCARVE



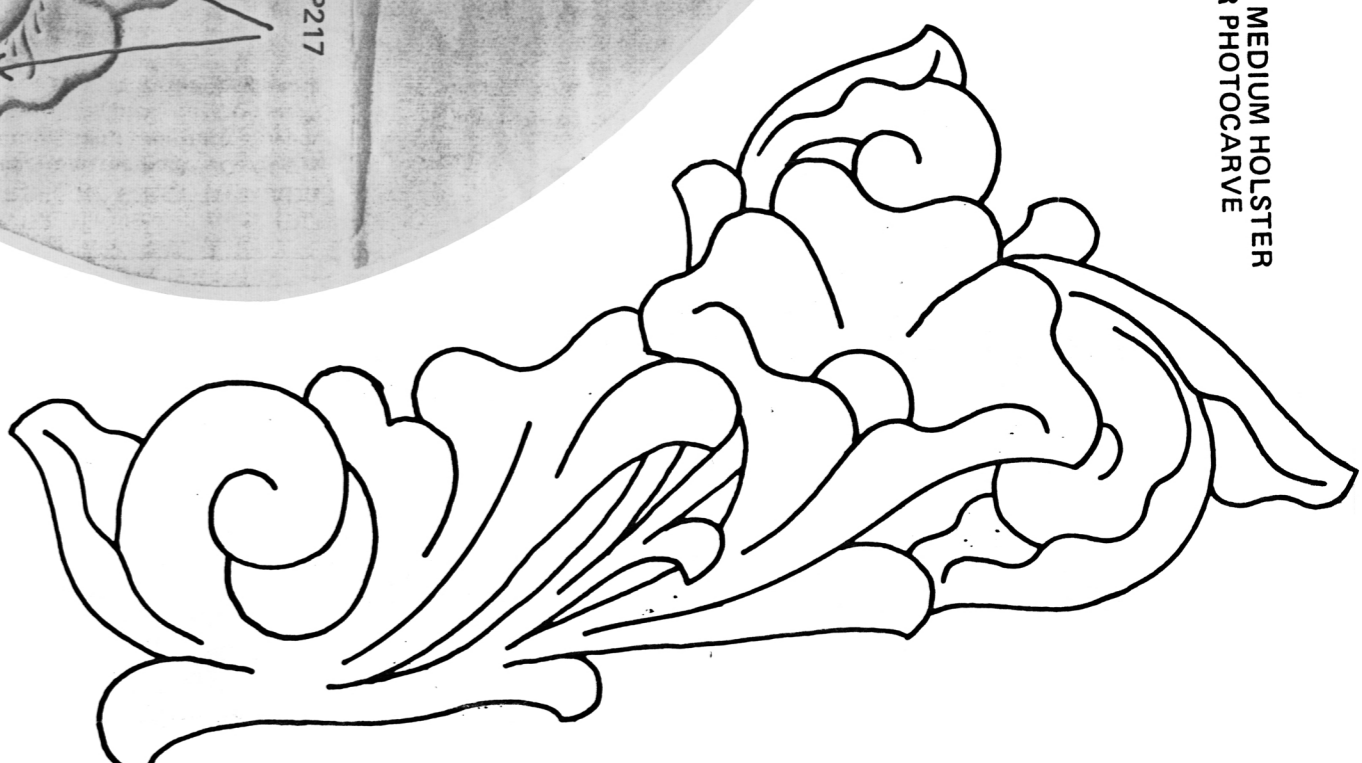
LINING FOR MEDIUM  
CUT 1 RIGHT, CUT 1 LEFT



HOLSTER FOR AUTOMATICS



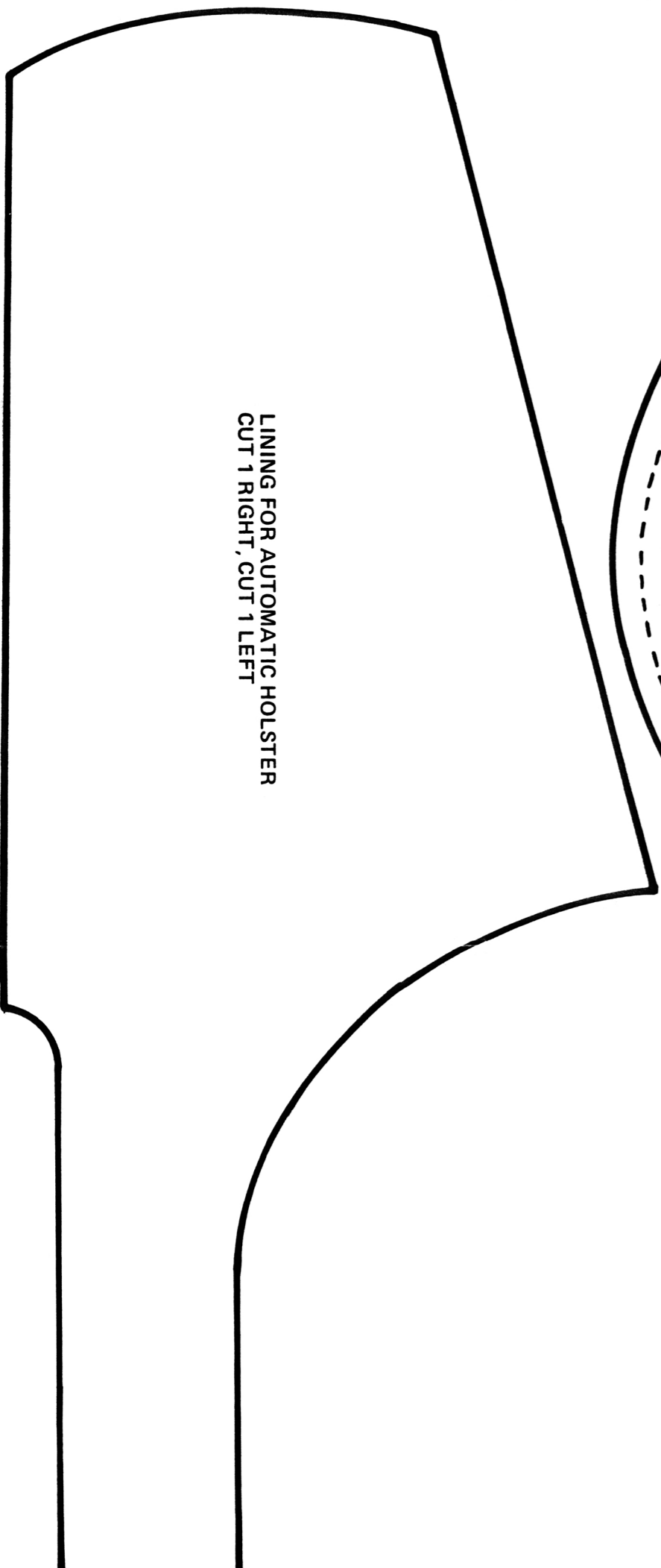
SEE MEDIUM HOLSTER FOR PHOTOCARVE



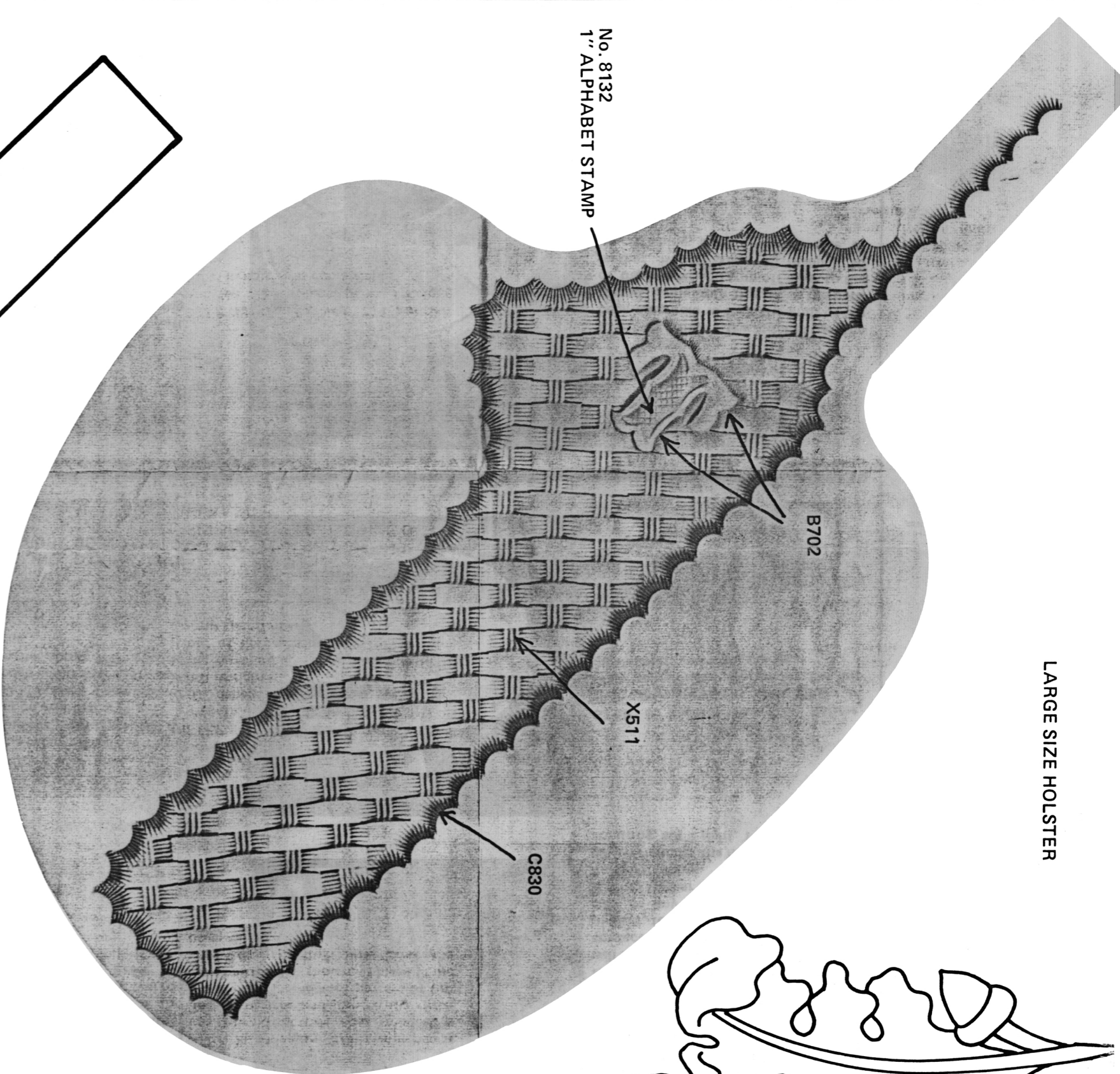
SEE SMALL HOLSTER FOR PHOTOCARVE



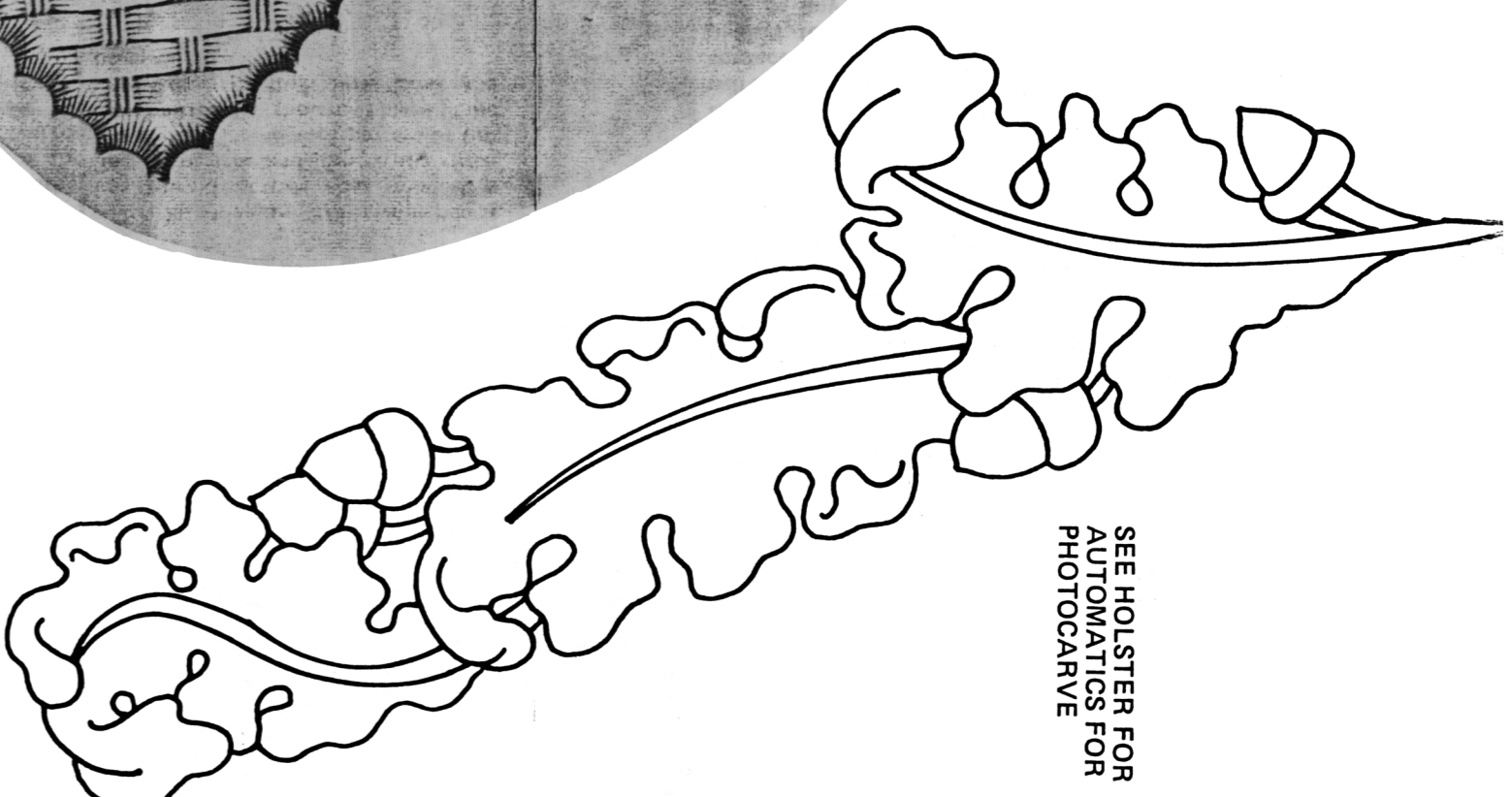
LINING FOR AUTOMATIC HOLSTER  
CUT 1 RIGHT, CUT 1 LEFT



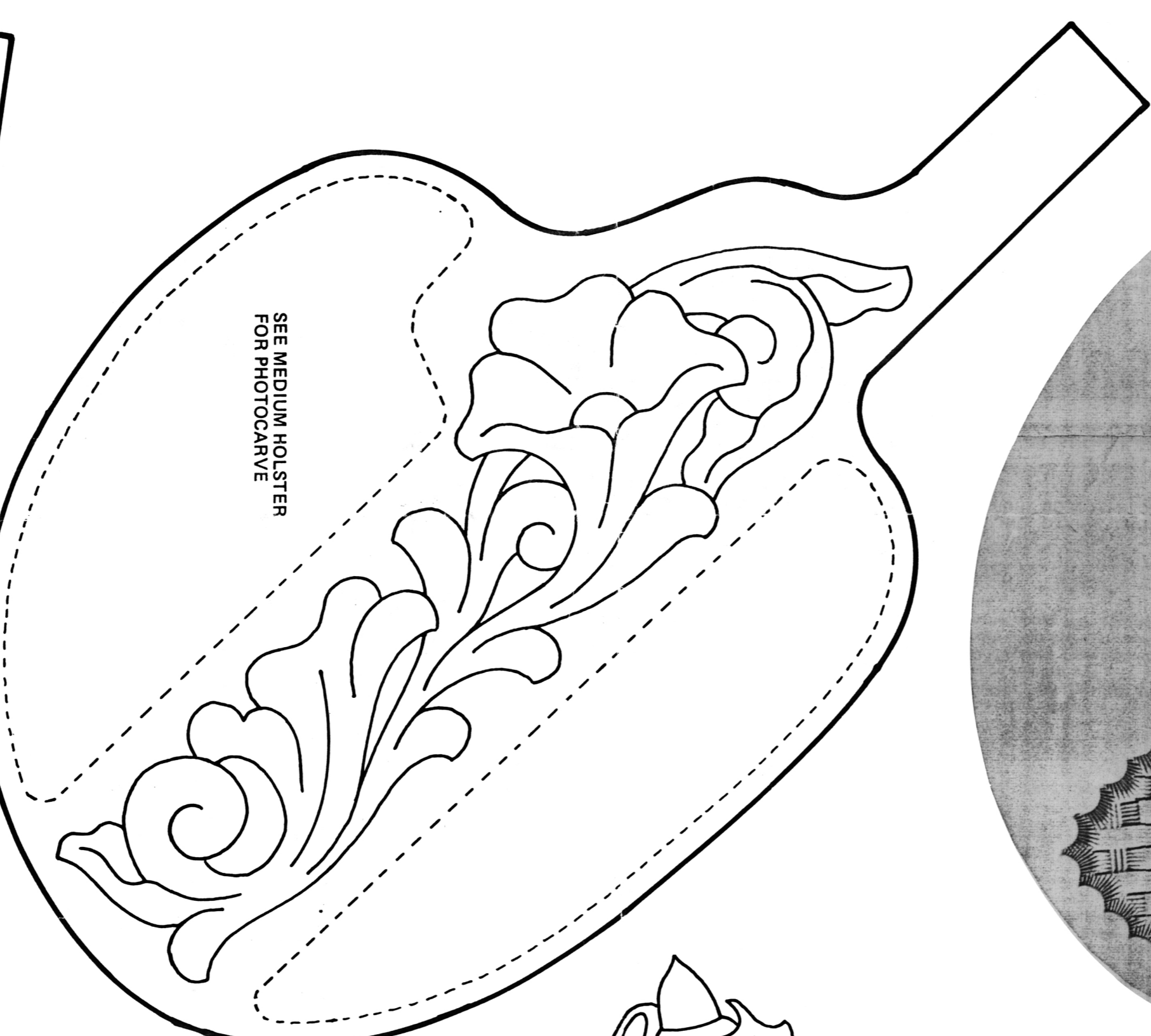
LARGE SIZE HOLSTER



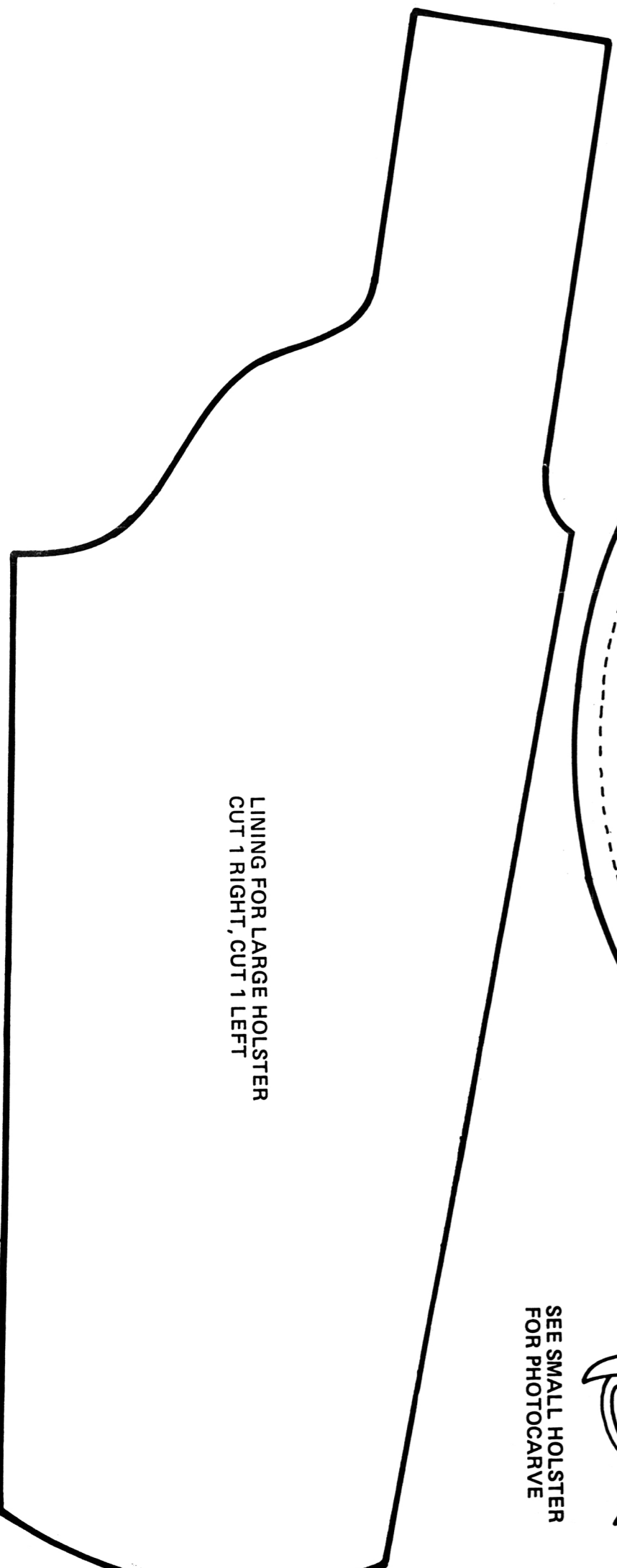
SEE HOLSTER FOR AUTOMATICS FOR PHOTOCARVE



SEE MEDIUM HOLSTER FOR PHOTOCARVE



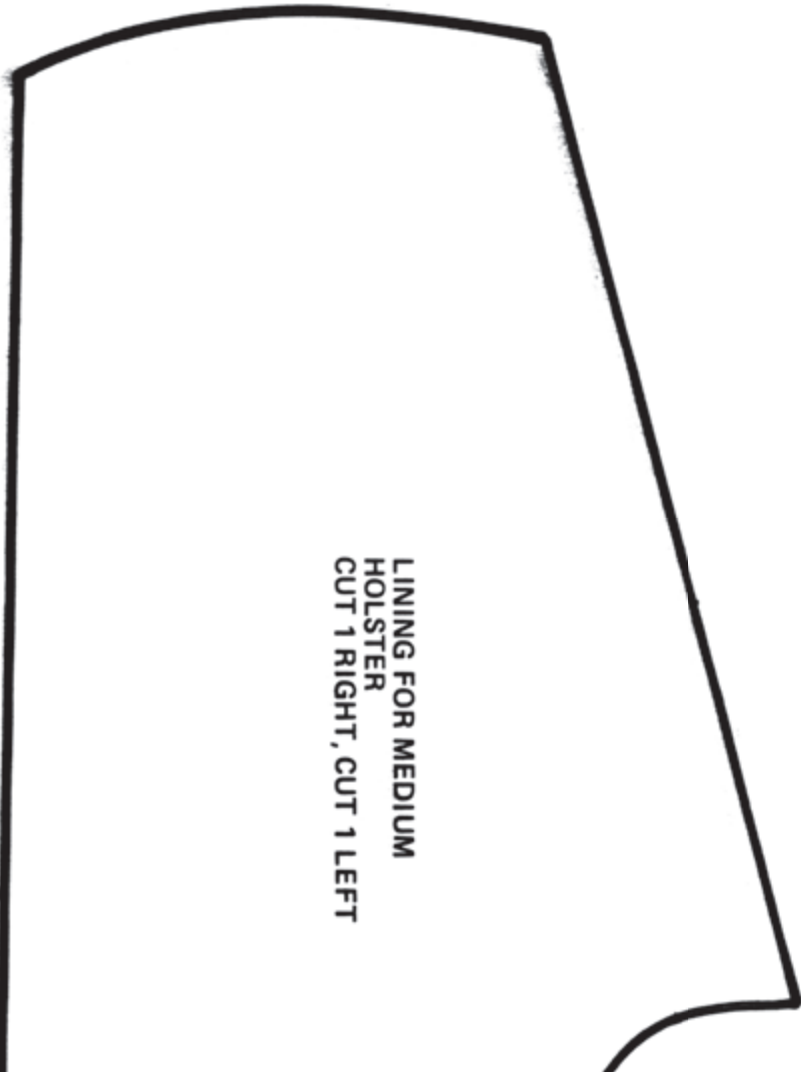
LINING FOR LARGE HOLSTER  
CUT 1 RIGHT, CUT 1 LEFT



SEE SMALL HOLSTER FOR PHOTOCARVE

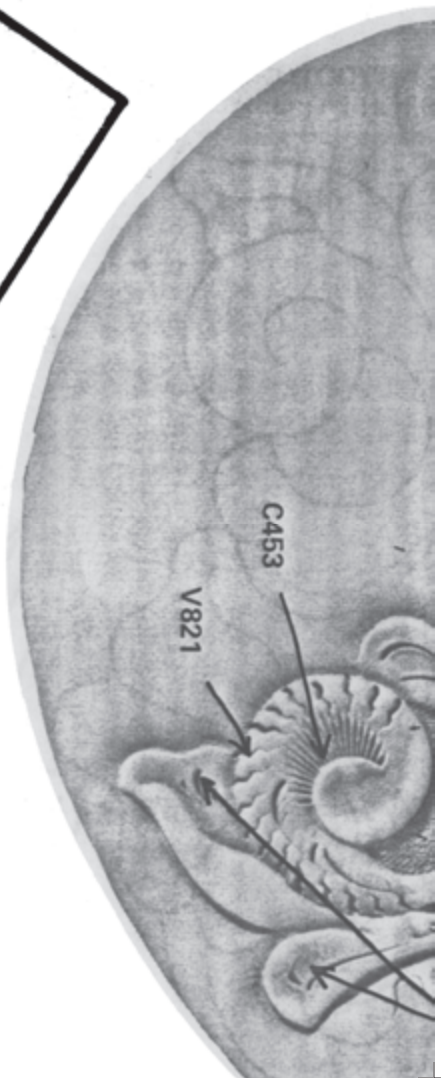
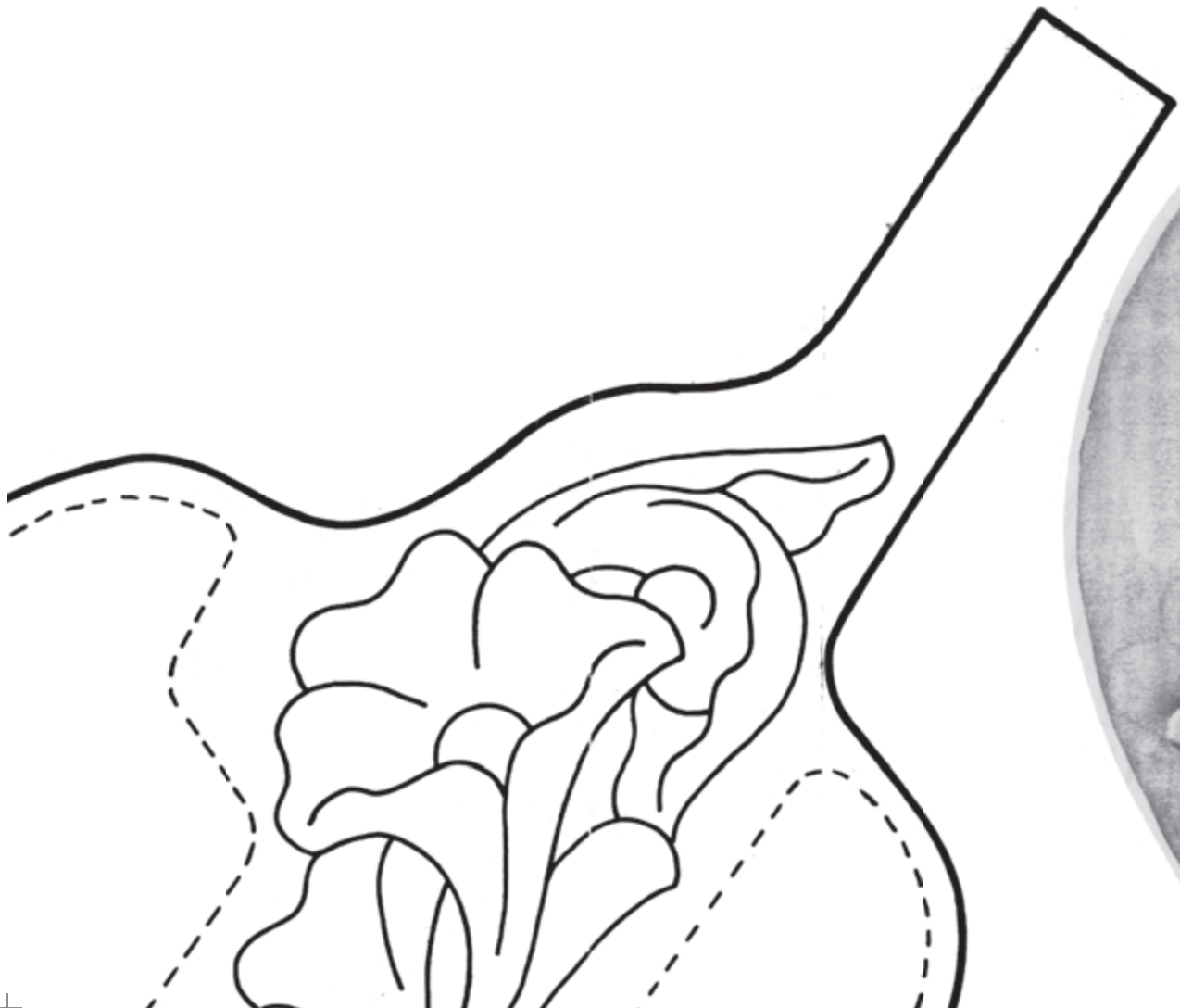






LINING FOR MEDIUM  
HOLSTER  
CUT 1 RIGHT, CUT 1 LEFT

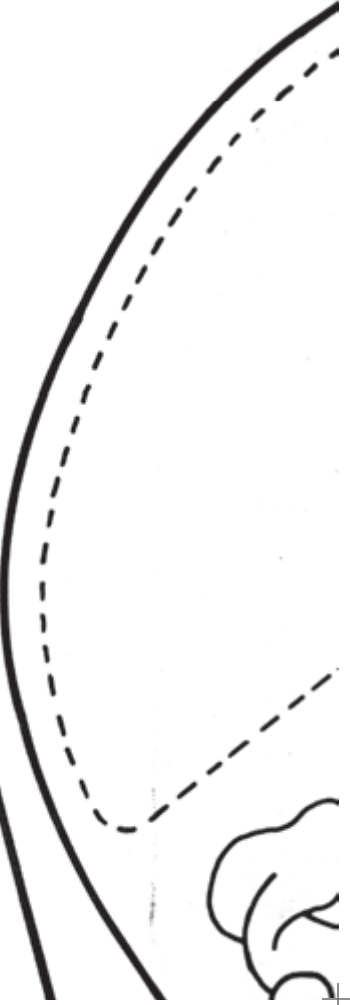
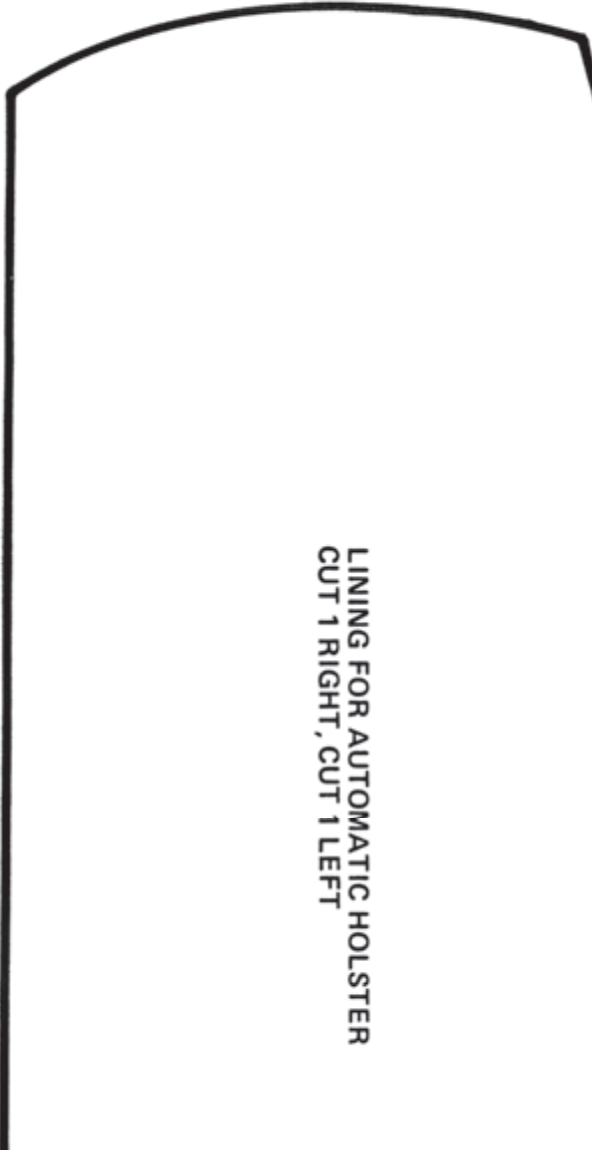
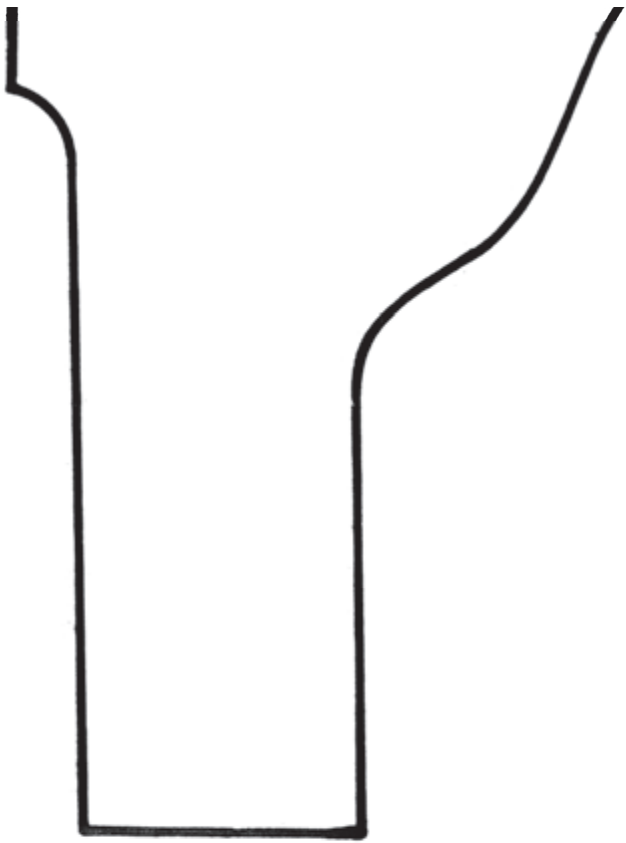






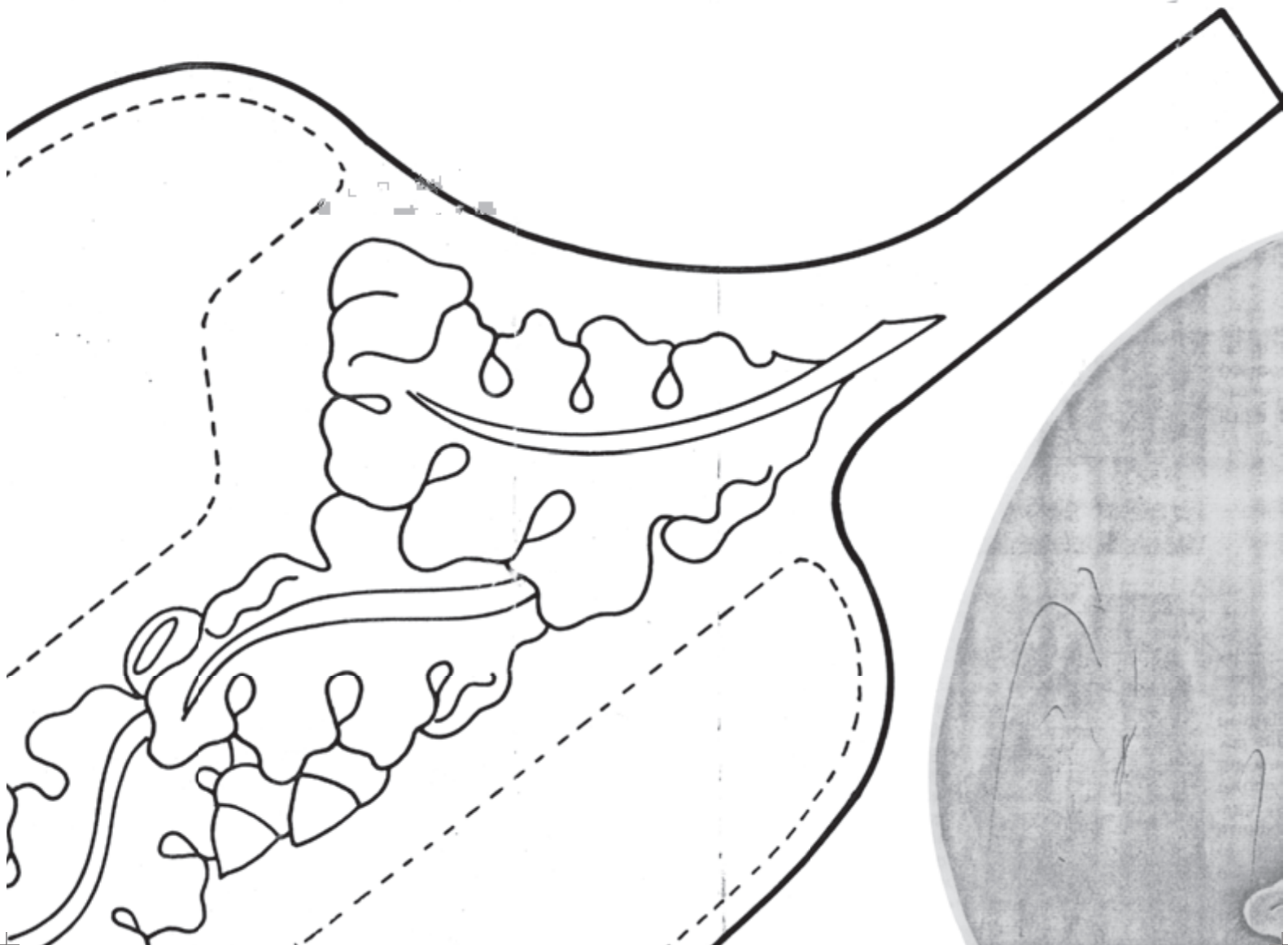
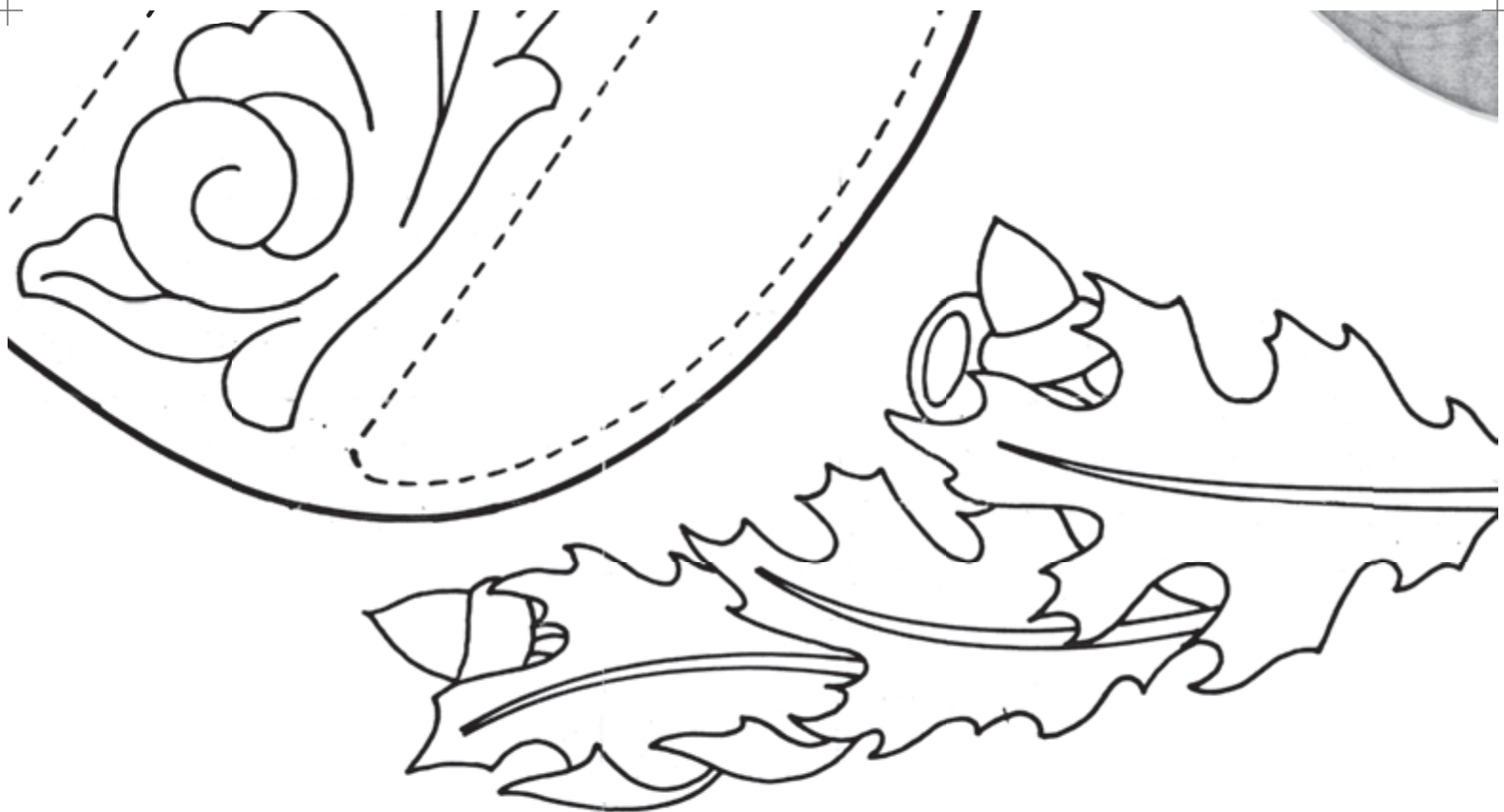
**MEDIUM SIZE HOLSTER**





LINING FOR AUTOMATIC HOLSTER  
CUT 1 RIGHT, CUT 1 LEFT



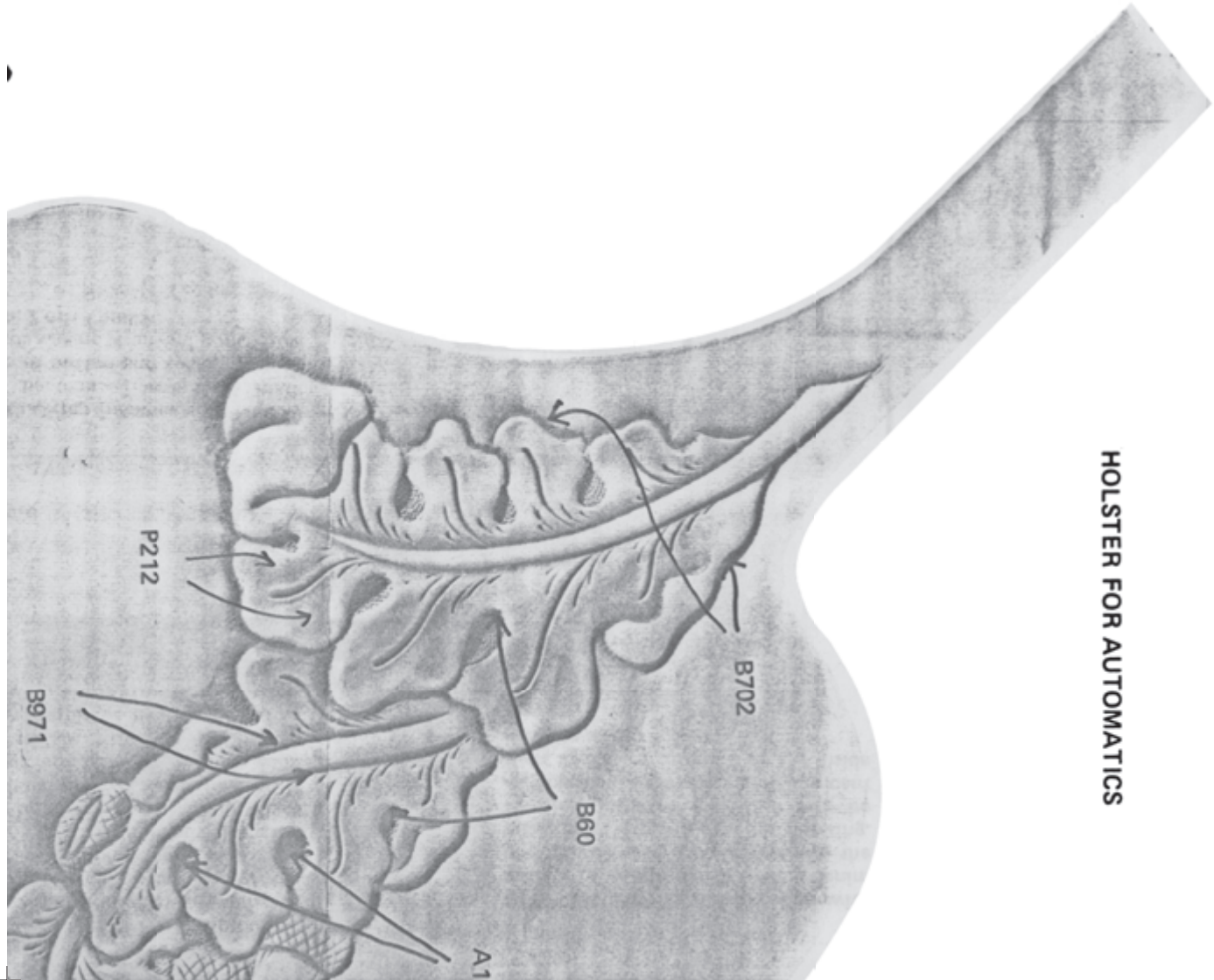




SEE HOLSTER FOR  
AUTOMATICS FOR  
PHOTOCARVE



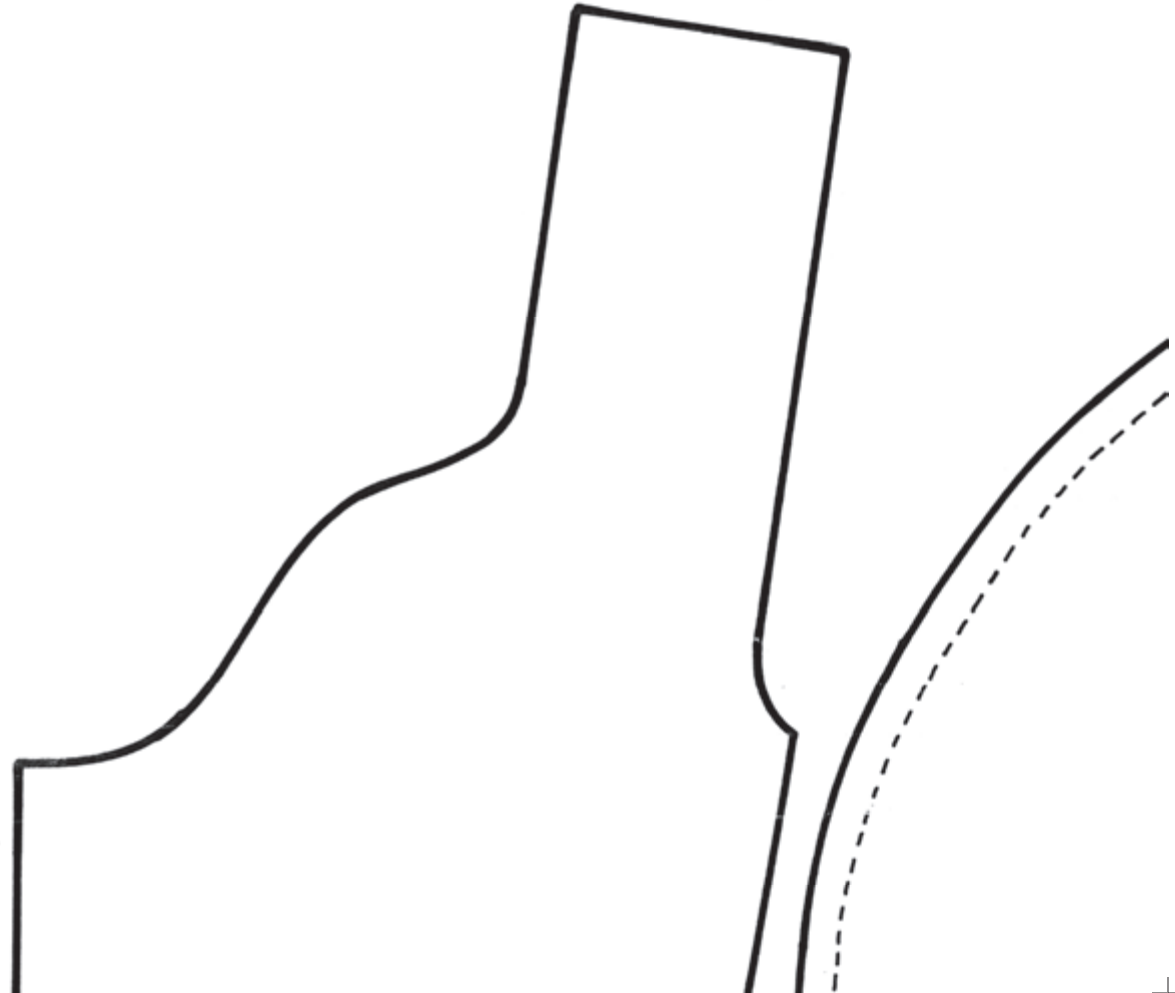
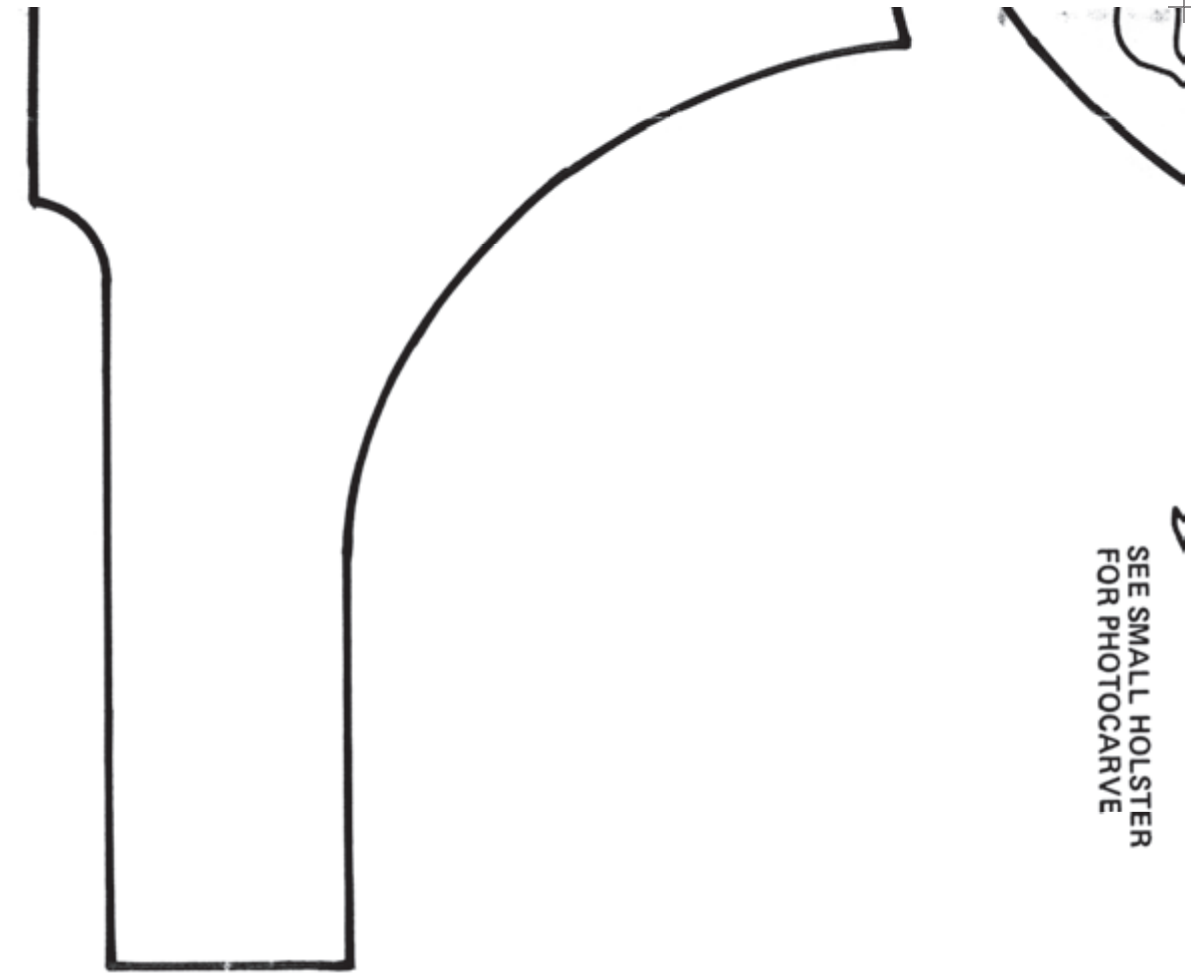
SEE SMALL HOLSTER  
FOR PHOTOCARVE

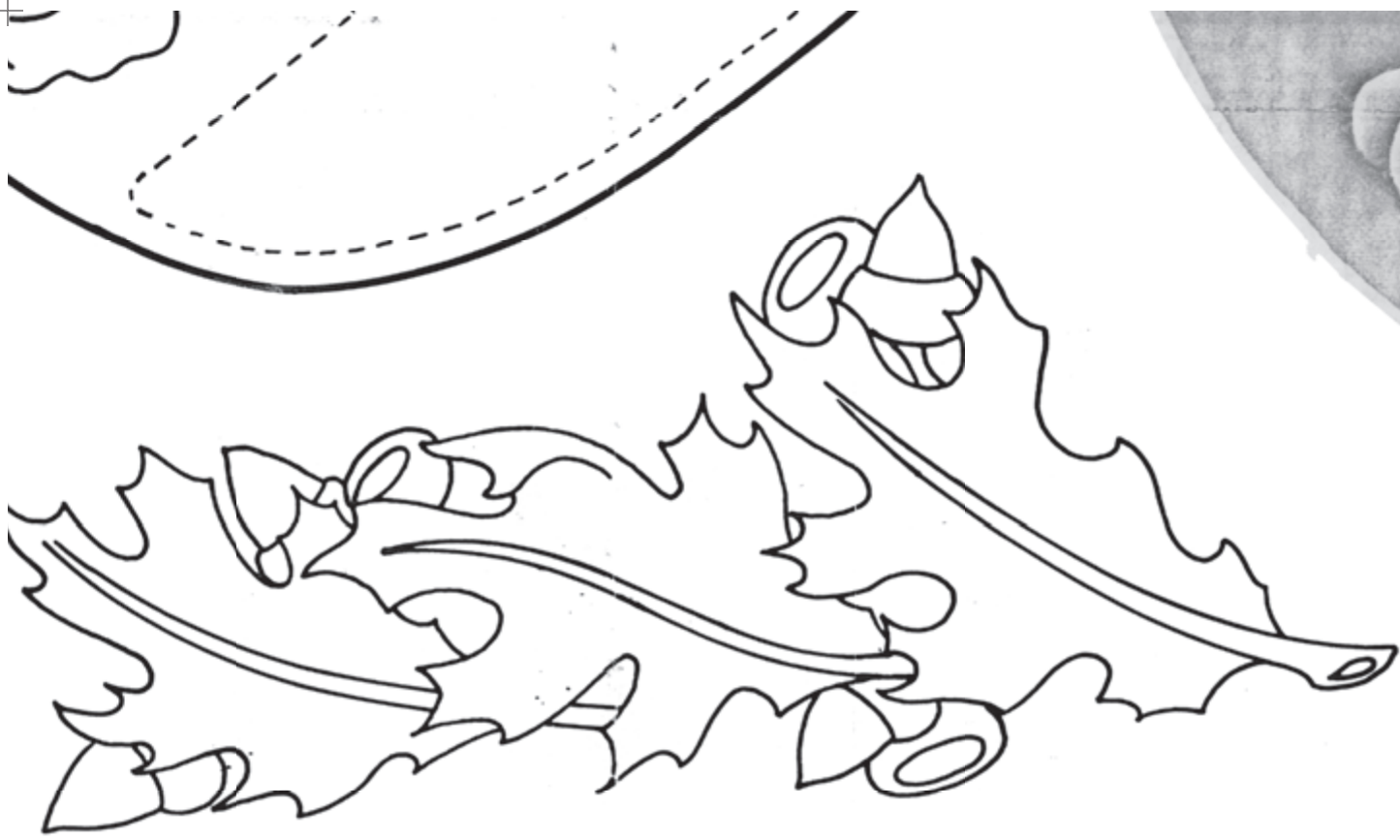


HOLSTER FOR AUTOMATICS



SEE SMALL HOLSTER  
FOR PHOTOCARVE

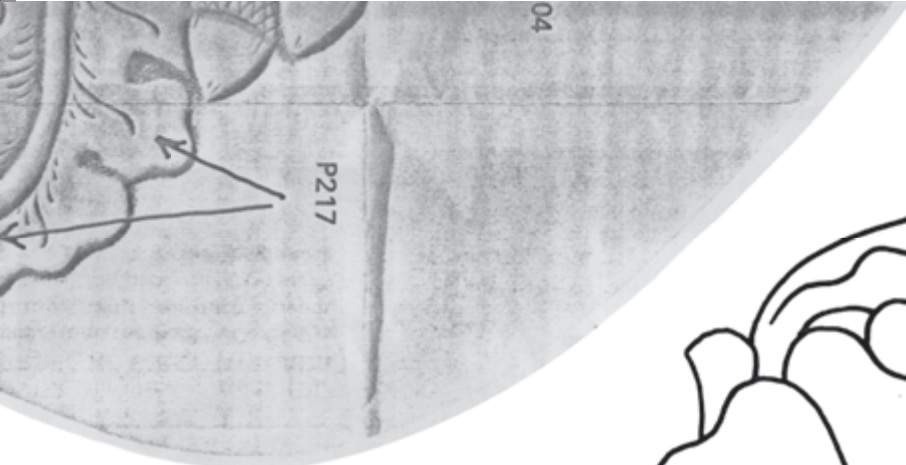
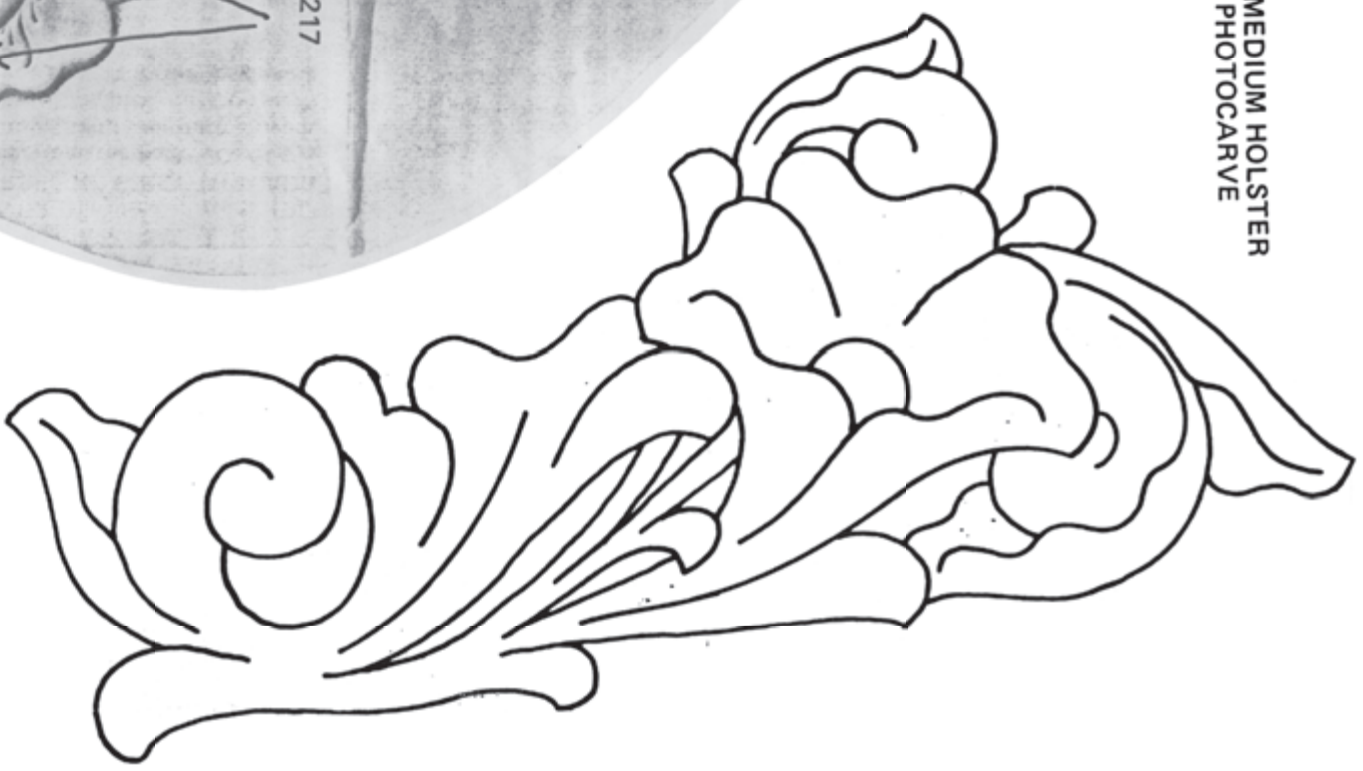




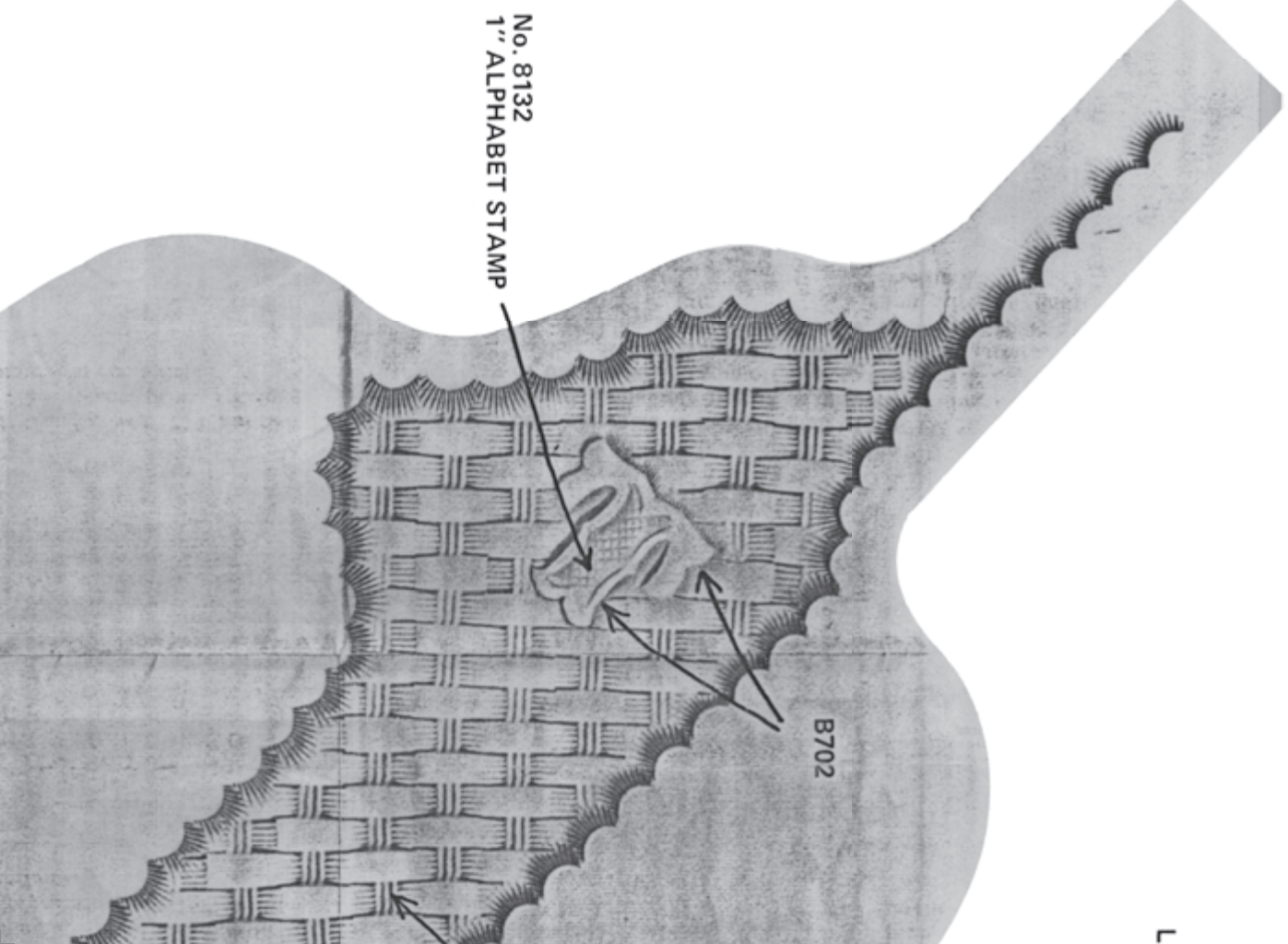
SEE MEDIUM HOLSTER  
FOR PHOTOCARVE



SEE MEDIUM HOLSTER  
FOR PHOTOCARVE



No. 8132  
1" ALPHABET STAMP

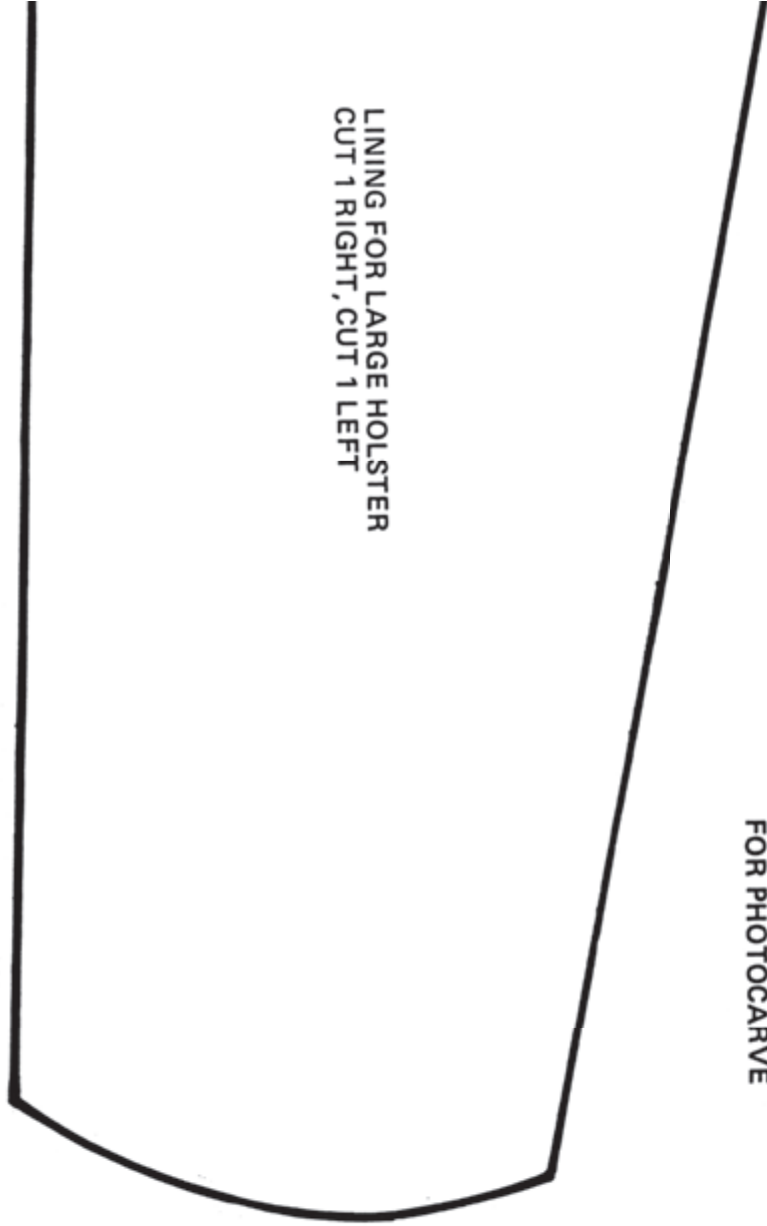


L



SEE SMALL HOLSTER  
FOR PHOTOCARVE

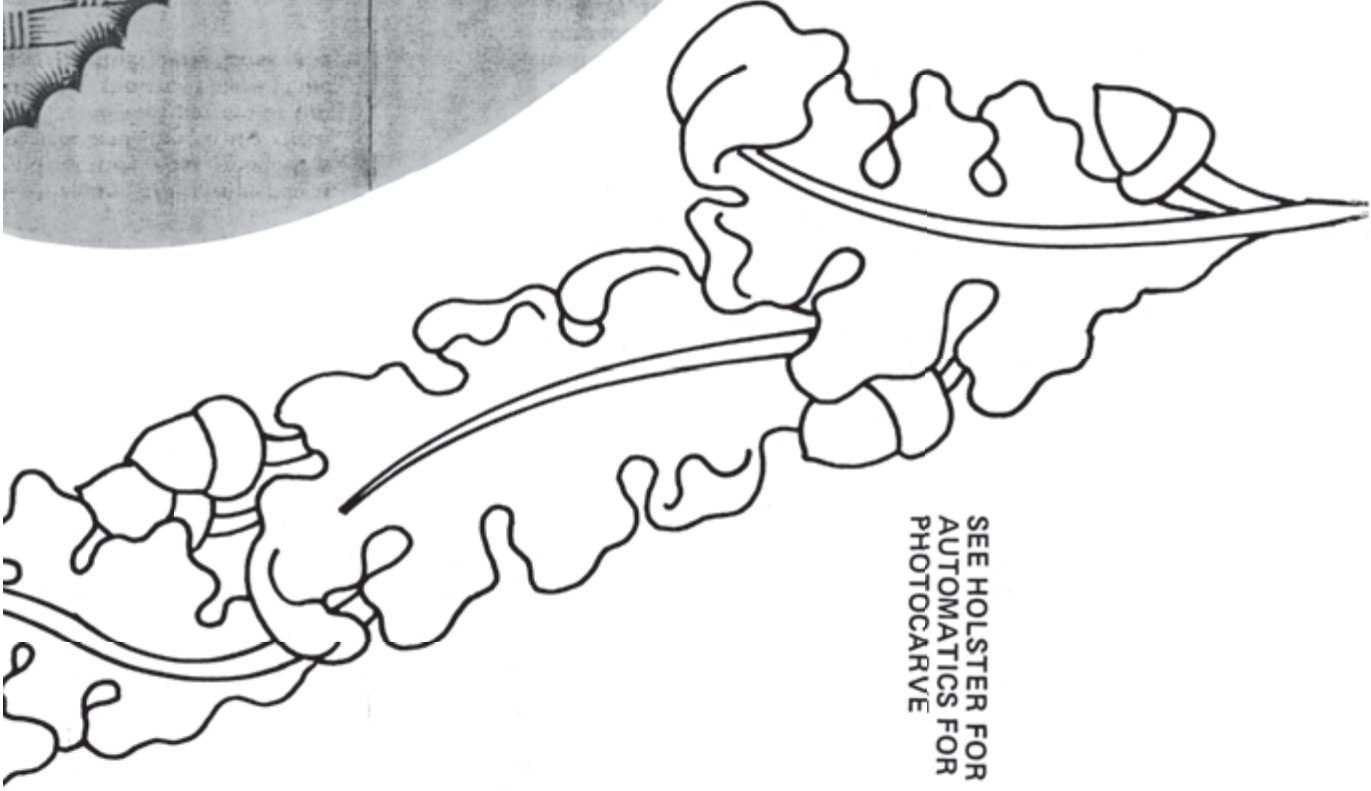
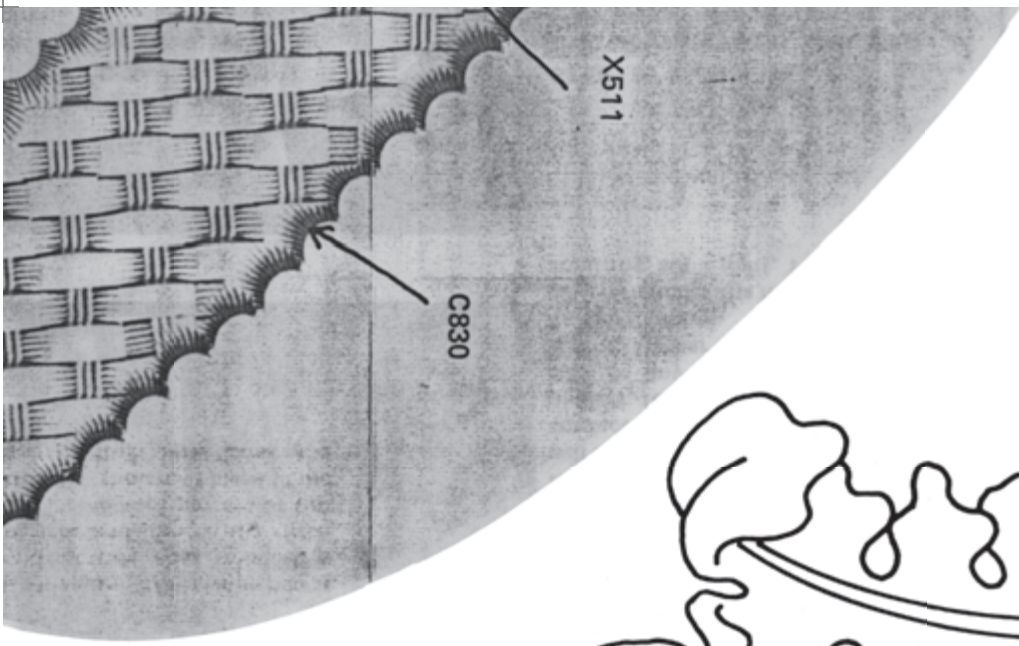
LINING FOR LARGE HOLSTER  
CUT 1 RIGHT, CUT 1 LEFT







ARGE SIZE HOLSTER



SEE HOLSTER FOR  
AUTOMATICS FOR  
PHOTOCARVE