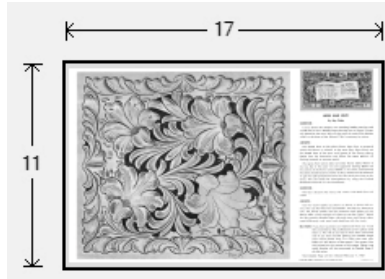




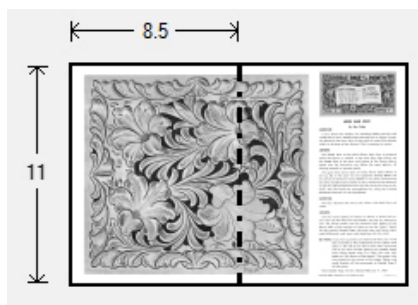
Doodle Page Digital Download

This PDF file contains 1 (one) Doodle Page. The PDF has been put together to give you options when it comes to printing. Pages and patterns that are larger than 8½x11 have been provided in two formats:



1) Full Size

If you would like to have a full size print out, take the full size pages to your local print shop and they can print it for you. All full size Doodle Pages are 11x17



2) Tiled

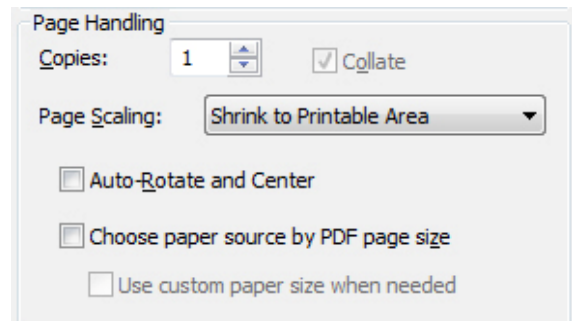
The tiled pages give you the option of printing the full sized Doodle Pages at home. You print the tiled pages and then assemble them to make the larger patterns.

The Doodle Page PDF files are typically laid out like this:

Front – full sized, front – tiled, back – full sized, back – tiled

(Some Doodle Pages do not have backs)

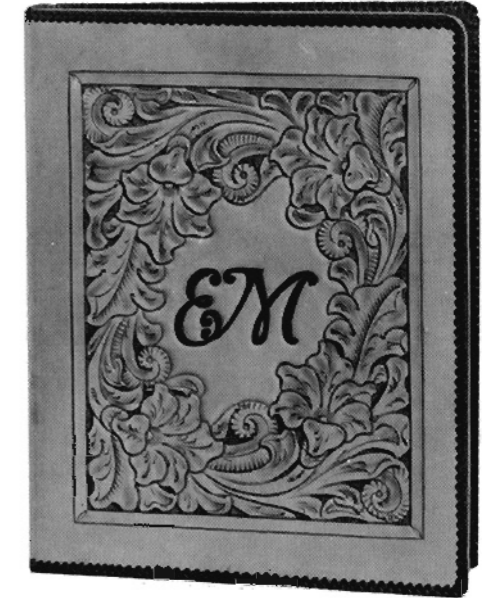
Please note: When printing on a home printer, the edges may get cut off. To avoid this, make sure “Page Scaling” is set to “Shrink to Printable Area” in the Adobe Reader print dialogue box. This will decrease the size of the Doodle Page a very small amount.



You may take this PDF file to your local print shop to have the full-size pages printed for your own personal use.

DOODLE PAGE OF THE MONTH

"Lad" Haverly this month's carver, offers conclusive proof of what can be done with a few good tools and a piece of leather. The design suitable for use as a loose leaf note book cover (as shown below) requires only EIGHT saddle stamps and a swivel top-cutter.



PRELIMINARY STEPS

1. Cut a piece of 5½ oz. leather 11½" x 20¼".
2. Thoroughly moisten the leather and place grain side up on a smooth flat surface and allow the surface of the leather to dry until it returns to its natural color.
3. Make the tracing pattern, DO NOT INCLUDE THE DECORATIVE CUTS.
4. Center the tracing pattern on the damp leather.
5. Use the ball point stylus to transfer the design to the leather. NOTE: Push just hard enough to make a clear distinct impression.
6. Cut the border lines and then the outlines of the design. DO NOT TRY TO CUT WITH A DULL BLADE.
7. Use the eight saddle stamps in the order shown.
8. Slightly moisten the leather and make the decorative cuts. Remember the moisture content should be: **HIGH** when cutting; **MEDIUM** when stamping; **LOW** when backgrounding.

For assembly instruction see "General Leathercraft" by Raymond Cherry, Pages 87-88.

Doodle Page No. 5 carved by Miss Gene Collins will feature figure carving.

To receive Doodle Page No. 5, please print your name and address on the coupon below and mail to your Crafttool dealer.

DEALERS NAME

Please put my name on your mailing list for page No. 5.

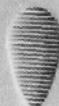
NAME

ADDRESS

CITY & STATE



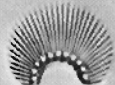
429



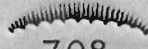
210



197



721



708



707

NEW TOOLS



942
1.30



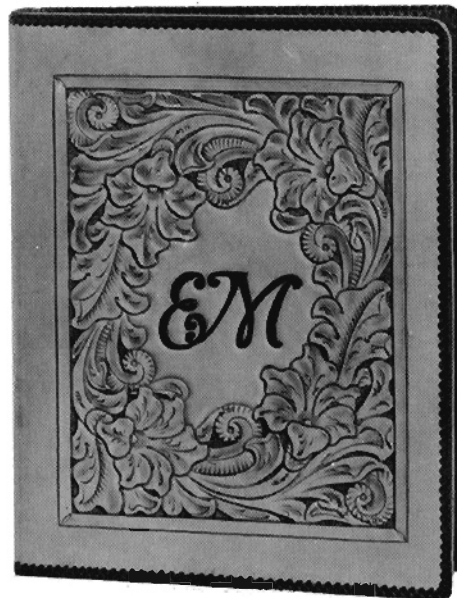
943
1.40



944
1.50

DOODLE PAGE OF THE MONTH

"Lad" Haverly this months carver, offers conclusive proof of what can be done with a few good tools and a piece of leather. The design suitable for use as a loose leaf note book cover (as shown below) requires only EIGHT saddle stamps and a swivel top-cutter.



PRELIMINARY STEPS

1. Cut a piece of 5½ oz. leather 11½" x 20¼".
2. Thoroughly moisten the leather and place grain side up on a smooth flat surface and allow the surface of the leather to dry until it returns to its natural color.
3. Make the tracing pattern, **DO NOT INCLUDE THE DECORATIVE CUTS.**
4. Center the tracing pattern on the damp leather.
5. Use the ball point stylus to transfer the design to the leather. NOTE: Push just hard enough to make a clear distinct impression.
6. Cut the border lines and then the outlines of the design. **DO NOT TRY TO CUT WITH A DULL BLADE.**
7. Use the eight saddle stamps in the order shown.
8. Slightly moisten the leather and make the decorative cuts. Remember the moisture content should be: **HIGH** when cutting; **MEDIUM** when stamping; **LOW** when backgrounding.

For assembly instruction see "General Leathercraft" by Raymond Cherry, Pages 87-88.

Doodle Page No. 5 carved by Miss Gene Collins will feature figure carving.

To receive Doodle Page No. 5, please print your name and address on the coupon below and mail to your Craftool dealer.

DEALERS NAME

Please put my name on your mailing list for page No. 5.

NAME

ADDRESS

CITY & STATE

