

Metro: Westside Purple Line Extension

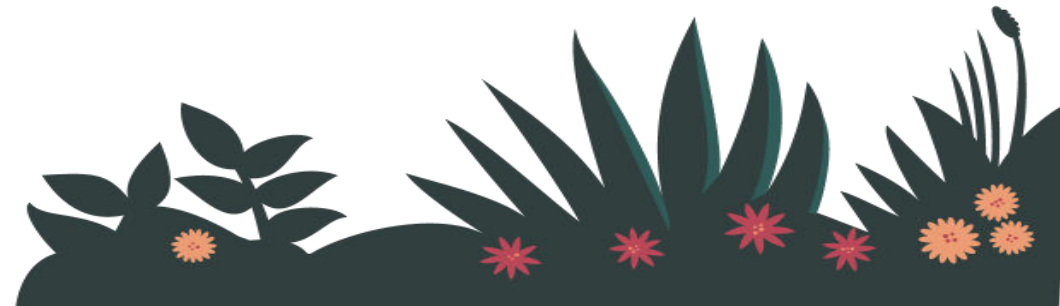
Amy's Summer Internship 2017



Amy Truong
amynhutruong@gmail.com

Outline of C1045

- Stations
 - Pot holing
 - Piles
 - Decking
 - Lagging
 - Struts/Whalers/Tiebacks
 - Ventilation
 - Utility
- Monitors
- Tunneling
 - Cross Passages
 - Jet grouting
 - Testing
 - Tunnel Boring Machine



Cross Passages

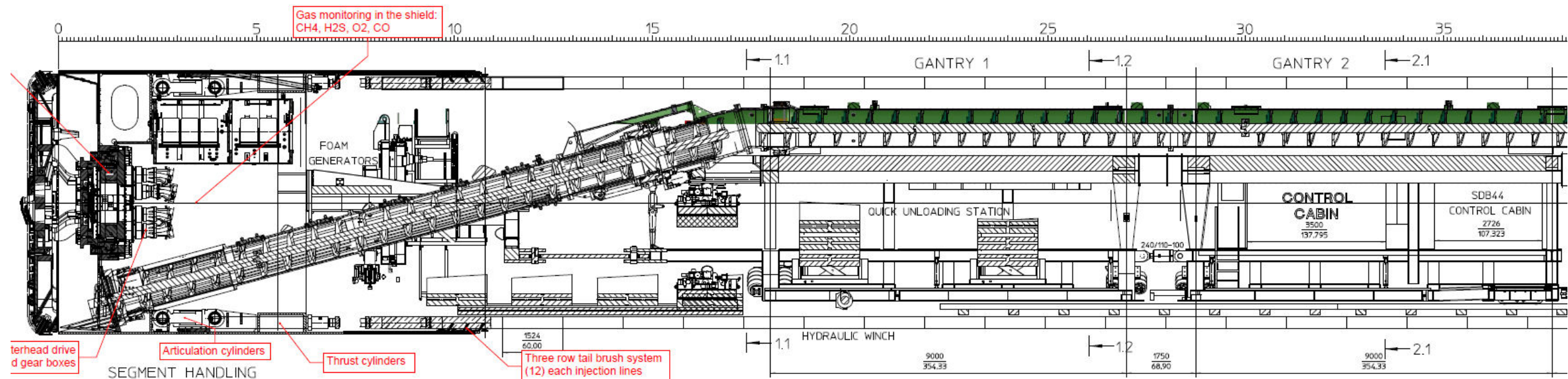
- Jet grouting: drill and input slurry to make earth more stable
- Cross passages: used for emergencies
 - Will be dug by hand after tunneling period



C1045.170712.1000AM Malcolm jet grouting at cross passage 14. Looking E

Tunneling

- Enters through a shaft and drills to the next station
- Pulled out and enters through the same shaft to drill another tunnel
- Tunnel boring machine: drill two tunnels side by side
 - Slowly removes earth and delivers it on a conveyor belt through the backside of the machine
 - Concrete links are inserted and locked into place as the machine drills



Construction Management

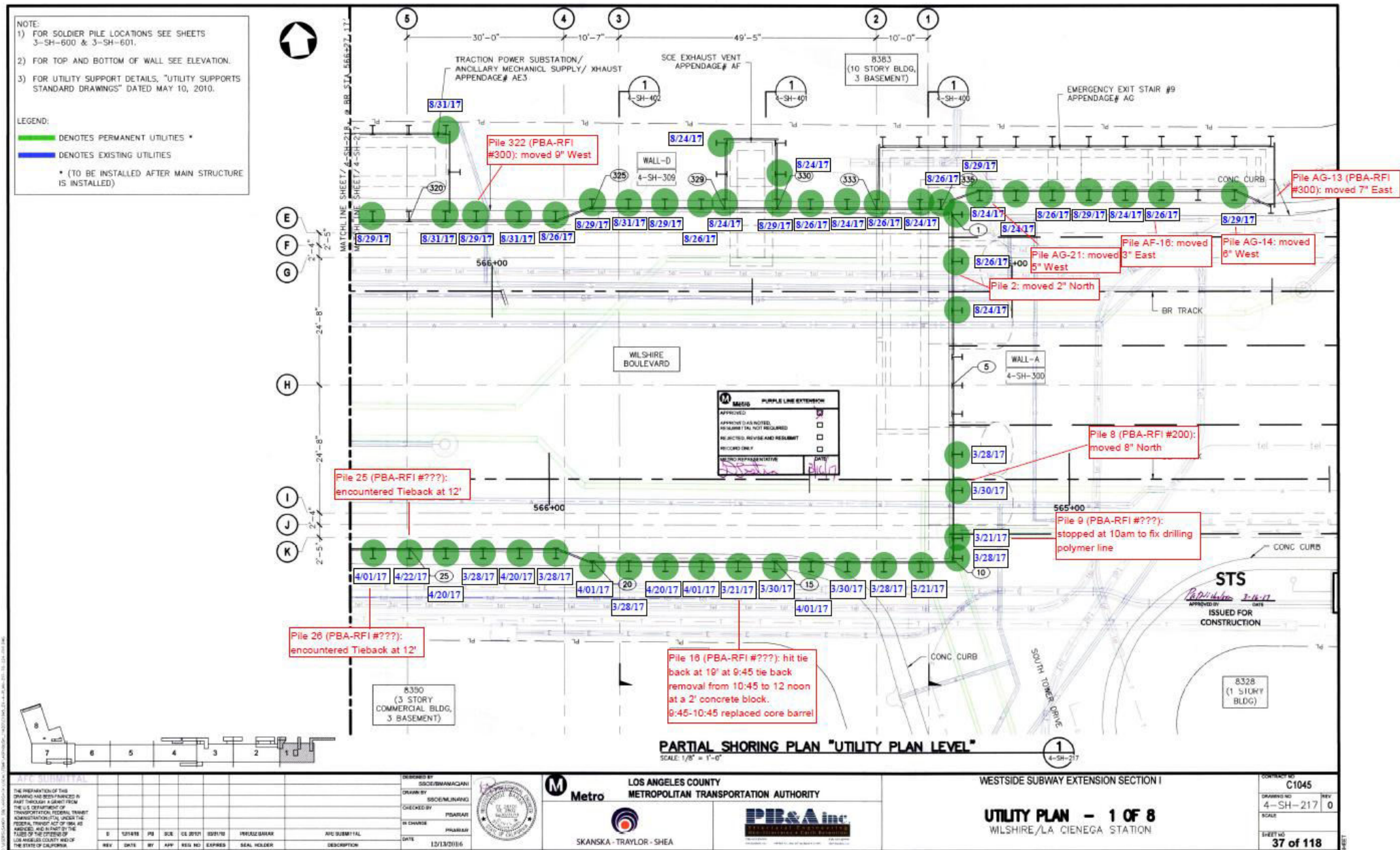
1. Budget
2. Schedule
3. Quality
4. Safety

Budget



C1045 170808 832am STS Sawcutting for Concrete Sidewalk Restoration in front of 6100 Wilshire W of Fairfax facing W

Schedule



Quality



C1045.170815.1031am.STS with Con Ad and Metro at CP 16 verifying the temporary installations of correct traffic control plans and signage looking E

Safety



C1045.170712.958am.Metro Intern on site observing the Malcolm jet grout activities at Cross Passage 14 location looking E on Wilshire

All Departments

- Office Administration
- Construction Relations
- Engineers
- Environmental/Paleo
- Document Control
- Safety
- Inspectors
- Interns

Field Tour



Field Tour

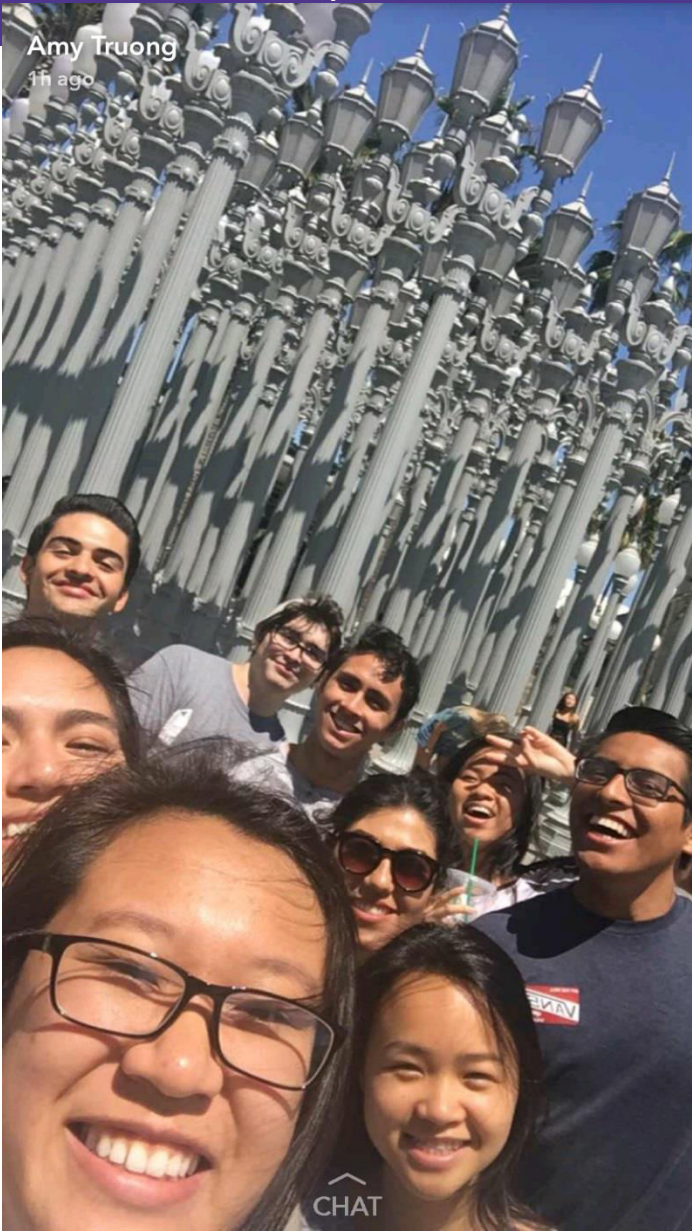


Field Tour

Vito 2016



Amy 2017



Amy 2017



Thank you!!