

Operating Intel Lighting & Show Express

Placing the Lights and Trussing

Place the intel lights on top of the trussing. If you are running a four light show place and program your lights in order from left to right, Light 1, Light 2, Light 3, Light 4. If you are running a two-light show, place and program Light 1 and Light 4.



See the video example in the Truss & Lighting web link of your employee account.

- Hang a Furman box inside of the trussing.
- Clamp the wireless Di-Fi DMX transmitter to the inside of the trussing.
- Power the light and the Di-Fi transmitter to the Furman box.
- Run a DMX cable from DMX out of the Di-Fi Transmitter to DMX in on the Light.
- Make sure all excess slack of Furman power strip is inside the truss neatly. Tape down all exposed wires running to the outlet.

How the Di-Fi Wireless DMX System Operates

Wireless Di-Fi transmitter (TRANSMITTER DOES NOT HAVE A CLAMP)

Always work in manual never auto!

Press **MENU**. Once transmit manual appears hit **ENTER**, it will highlight, press **Enter** again on transmit manual, transmit manual channel options will pop up, **select** desired channel, press up and down to **CHOOSE CHANNEL (typically we use channel 2)**, press **ENTER**. Transmitter is set to channel 2 now make sure receiver are set to channel 2.

Wireless Di-Fi Receiver (HAS CLAMP ATTACHED)

Press **MENU**, **PRESS** enter on receiver manual, select receiver channel (2) and hit **ENTER**.

The receiver is clamped to truss and sits inside of truss, **DMX** out into moving head **DMX** in.

Opening Show Xpress

Make sure you have the Show Xpress box plugged into computer via USB before you open the Show Xpress software.

OPEN Show Xpress.

Make sure all your lighting fixtures are assigned to the correct DMX channel.

To find the DMX channel for each light go into **EDITOR**, click **FIXTURES**, **select your light in the box on the right**. Once you select your light the DMX channel will become selected on the left. You'll see two numbers, one at the left of the DMX address and one at the right of the DMX addressing. The number on the left is the starting DMX channel. Make sure all of the lights are set to the correct starting channels.

Set the DMX Channel on Each Light

On the light, **PRESS** menu, **PRESS** up/down until you are at desired channel, **press enter** to select channel.

Create the Lighting Scenes

The main lighting scenes we must create or edit for an event are **Dinner, Intro Talk, Grand Entrance, Dance 1, Dance 2, & Dance 3**. You will see all of these in the Live Screen.

You will most likely have to adjust the X & Y channels on these scenes this way the lighting scene looks good in the room you are in.

If you need to make adjustments, you will go into editor select your light and make adjustments.

- Select Live Mode.
- Turn on DMX (Upper right corner.)
- Select the Single-Color White.
- Select the scene you wish to edit, right click the scene, select edit.
- In editor turn on DMX.
- Select the light you wish to edit.
- Select the step you wish to edit.
- Adjust the X & Y channel faders to fit the room
- Make sure that the Tetris looking symbol at the bottom of the X & Y channels are set to 45% not 90%.
- Repeat this process for all steps and all lights.
- You can speed or slow down the scene by adjusting the duration time. The less time (8 seconds) the **quicker**, the more time (12 seconds) the **slower** the scene.
- Save the scene. (Not Save As.)
- Turn off DMX in Editor.
- Select Live Mode.
- Deselect the scene and then reselect it. This will reset the scene and display the new edited scene.
- Repeat this process for all of your main scenes. Dinner, Intro Talk, Grand Entrance, and your dance scenes.

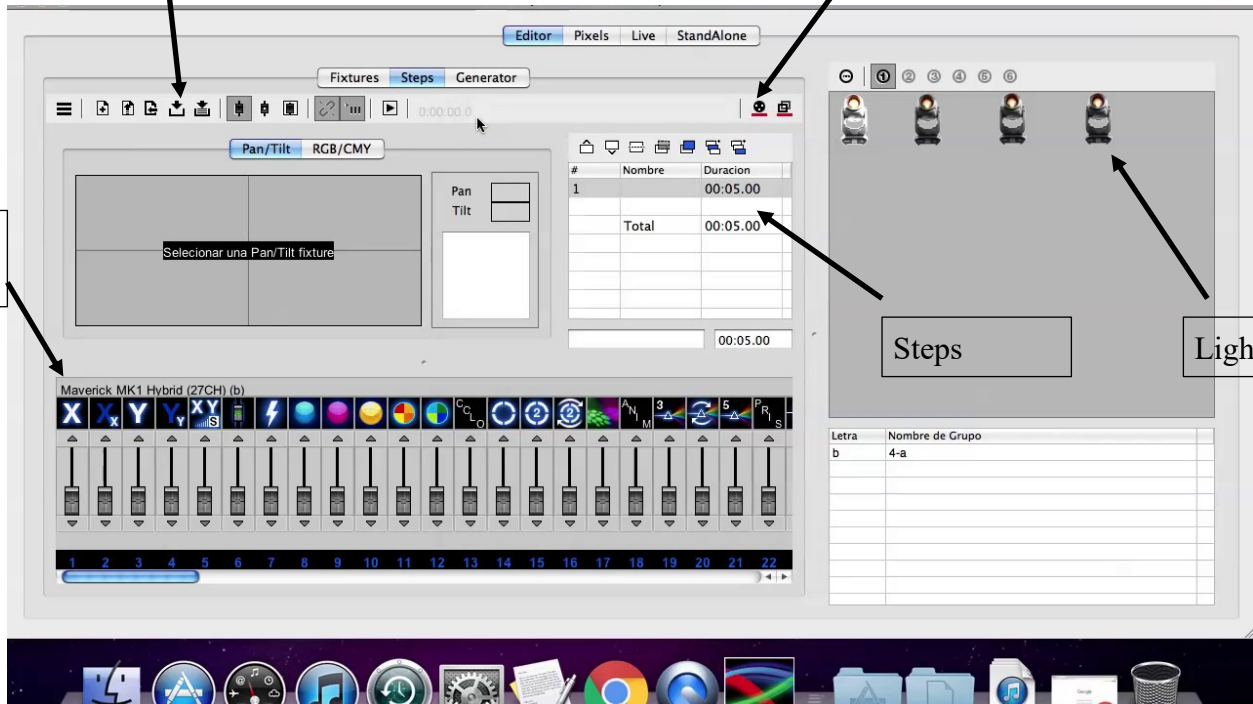
You may have to adjust the **ZOOM & FOCUS**.

In editor hover your mouse over the fader buttons of the selected light and it will tell you what each channel is.

NOTE: Dinner, Intro Talk, and Grand Entrance scenes will have color. They will be white and have gobo as well. Dance scenes will not incorporate a color in editor, we will layer the colors in live mode.

Save Scene

DMX Button



DMX Button

Red = Off
Green = On

Running the Lighting Shows During Specific Moments

Dinner Scene:

Guests Arrival

Formal Dances

Toasts

Cake Cutting

Dinner

Slow Dances

Garter/Bouquet

Or any other low-key part of the event.

Intro Talk:

Is used during the Event Hosts welcome speech.

Dance Sets

Grand Entrance:

When the Event Host asks guest to point their attention towards the grand entrance for introductions.

After the bride and groom are announced at introductions and start to walk into the room you can select "Crazy Spin" As soon as the bride and groom get to the dance floor after introductions select "Dinner Scene." Leave dinner scene selected until we open the dance floor. **MAKE SURE THE MOUSE IS NOT HOVERING OVER AND SELECTABLE LIGHTING SCENES WHEN DINNER SCENE IS ON.**

Dancing:

You will layer the light show.

For example, select a **movement**, next add a **color**, you can add a strobe etc.

DO NOT hold down the strobe button for a long period of time.

Trouble Shooting

Make sure all wires are in correct input.
Make sure everything has power.
Restart Computer and show express if program is not responding.



DMX & Power to the light.



Wireless Di-Fi DMX Transmitter & Furman Box inside the trussing



Selecting the DMX
Channel on the front of
the light.



Propper Taping

