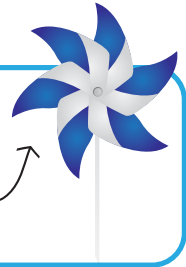


Constellation Pinwheel

MATERIALS

- Scissors
- Hole punch
- Pipe cleaner
- Popsicle stick

Finished
pinwheel
shape



INSTRUCTIONS

- 1 Use scissors to cut out the shape below, cutting along each black line.
- 2 Use the hole punch to punch a hole over each black circle.
- 3 From the white underside, slide the pipe cleaner through the center hole so it sticks out above the constellations.
- 4 Fold each flap so that the pipe cleaner goes through each of the other holes.
- 5 Tie a knot in the pipe cleaner on the front side of the pinwheel to secure the flaps down.
- 6 Wrap the underside portion of the pipe cleaner around a popsicle stick. Wrap it loosely enough for the pinwheel to turn. Blow on your pinwheel to watch the constellations spin!

