

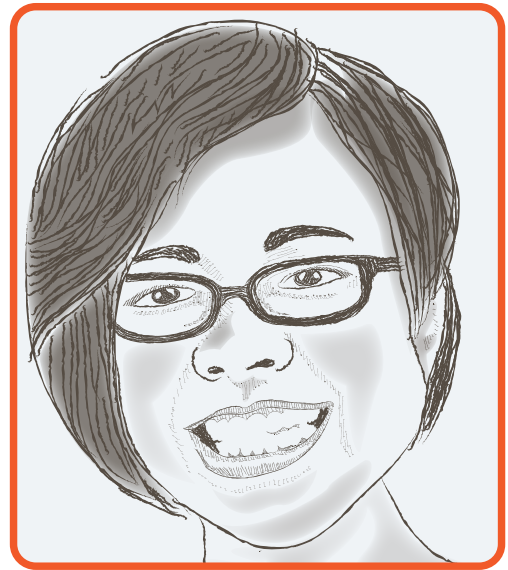
Suspect Sketch

Words sometimes fail when a witness tries to describe what a suspect looks like. Police have often relied on forensic artists who sketch an image of a suspect or a crime scene freehand or with computers. Forensic artists help identify suspects by creating a composite sketch. A composite sketch is based on what the witness describes.

Compare the sample description with the sketch. Read the two descriptions and, on a separate piece of paper, draw the faces of each “suspect” as closely as you can to the description with a pencil.

Example

An Asian woman in her 40s with light, smooth skin with oval face shape. Her hair is black and short, going down to her chin in a bob cut with dark eyebrows. Her hair swipes to the side across her short forehead. She has small, narrow eyes that are dark brown in color. Her nose is wide and round. She has thin lips and her ears are flat against her head. Her cheeks are filled out and her chin comes to rounded point. Suspect wears rectangular, black-framed glasses that have rounded corners.



1 A young Caucasian woman in her 20s with light-to-medium-toned skin. She has a round face with a chin that comes to a point, like a triangle. Her hair is parted on the side and it comes down to her shoulders. It is light-brown in color. Suspect has green eyes that are round and tilt slightly downward. She has medium-sized lips and the corners of her mouth turn upward. Her nose is short and narrow. She has a high cheekbone structure.

2 An Indian male in his early 30s with dark brown skin and narrow, rounded eyes. He has a square-shaped face with a round chin. His hair is short, slightly curly and neatly trimmed around the ears. He has large ears that protrude from his head. His hair color is very dark brown, almost black. His cheeks are filled out and partially covered by facial hair. Suspect has a full beard that matches his hair color. He wears round, silver wire-framed glasses.