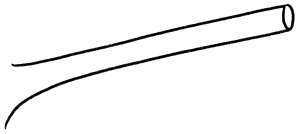




Let's Draw a Sloth!

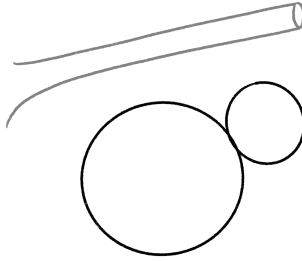
The Amazon River runs east to west, starting in the Andes Mountains of Peru. Surrounding this complex river system is a tropical rainforest where millions of plants and animals live, including the adorable sloth. Peru is a great place to see two-toed and the slightly smaller three-toed sloths in the wild.

1



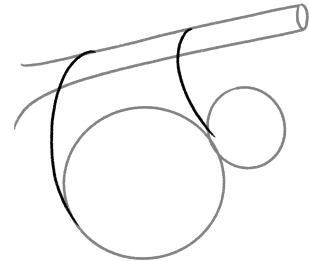
Start with a long branch for the sloth to hang from.

2



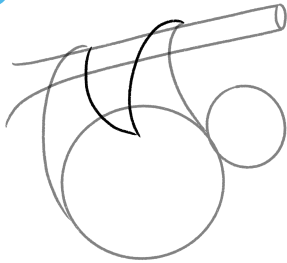
Lightly draw one large circle and one small circle below the branch.

3



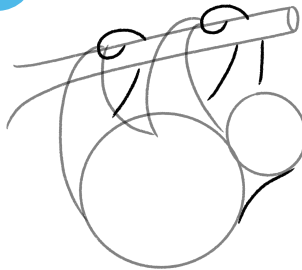
Add two curved lines connecting the circles to the branch.

4



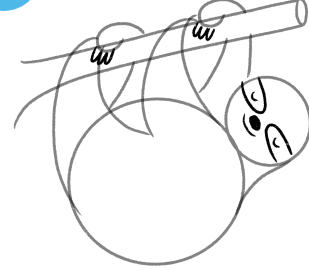
Draw a curved V-shape to create the sloth's arm and leg.

5



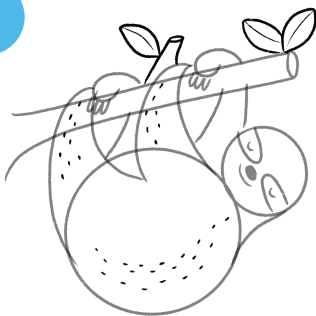
Add in the other arm and leg. Then, draw a slightly curved line to connect the head and body.

6



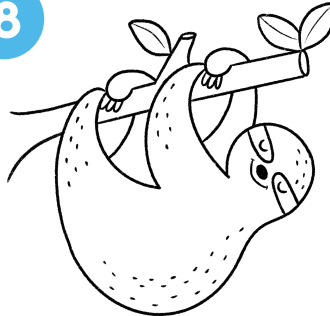
Draw two eyes, a nose, and a peaceful grin. Don't forget the claws!

7



Add some fur and leaves.

8



Trace over the lines you want to keep.



Color it in if you'd like!