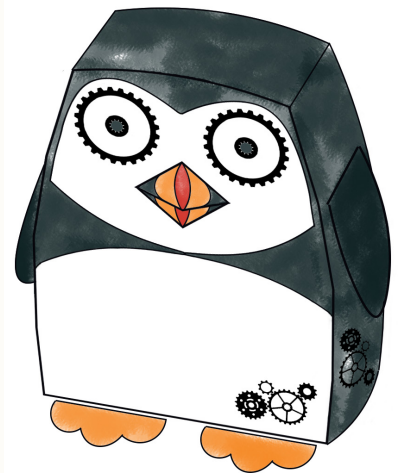


Build your own Puffin Robot!

Get crafty and build your very own puffin robot just like Tom's creative creations in *The Puffin Portal*.

Building a robot can be quite fiddly so please ask a grown-up for help when cutting out all of the little parts.



YOU WILL NEED:

- Our printable template included on the next page
- Some colouring in pens and pencils
- Glue and scissors
- Thick paper

STEP 1: Print out the template onto your thick paper.

STEP 2: Colour in the body, wings and feet of your puffin robot. Leave the tabs on each section white so that you know what bits you are folding.

STEP 3: Very carefully cut out the body. Make sure to cut around all the tabs on the side of the body so that they can be folded.

STEP 4: Fold all the tabs backwards against the reverse side of the body.

STEP 5: Put some glue around the edge of the puffin's head on the reverse side. Don't use too much and make sure you put the glue on the white side not on the side that you've coloured in.

STEP 6: Starting with the puffin's face, stick the folded tabs down along the glue line. It should curve quite easily because of the way you've cut the tabs.

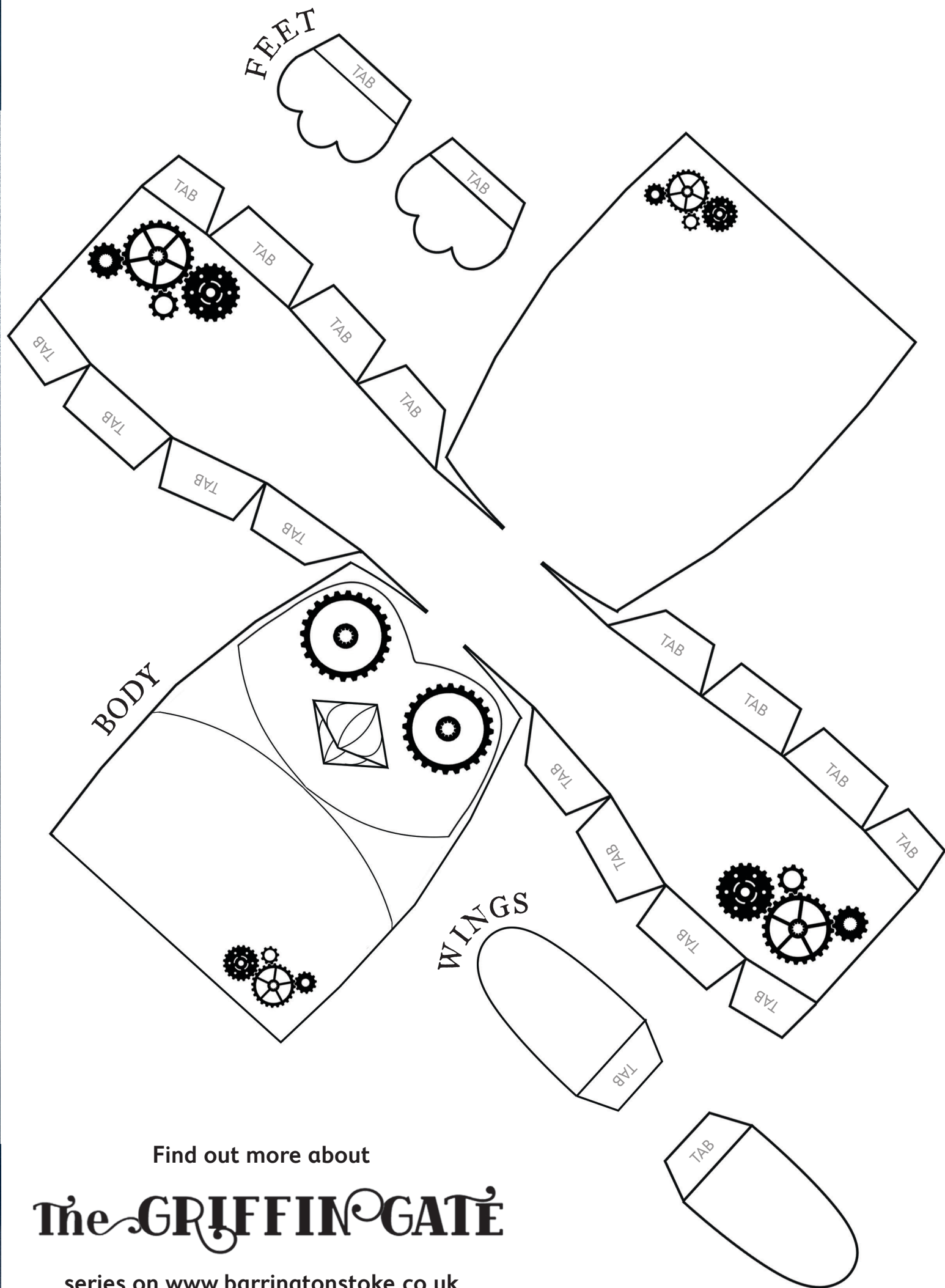
STEP 7: Fold the back of the puffin's head over and stick the remaining tabs to the glue on that side.

STEP 8: Cut out the puffins feet. Fold the tabs so that they stick up.

STEP 9: Glue the tabs on the feet to the reverse side of the puffin's face so the feet stick out in front of it.

STEP 10: Cut out the wings and fold the tab flat against the reverse side of each wing.

STEP 11: Glue a wing to each side of your puffin robot by sticking the tab flat against the body.



Find out more about

The GRIFFIN GATE

series on www.barringtonstoke.co.uk