

Henry Purcell

10 Pieces
for Archlute



Intabulated
by
Jonathan Rubin

TREE EDITION

Henry Purcell

10 Pieces

Selected and
intabulated for
Archlute

by
Jonathan Rubin

© 1995

TREE EDITION

Albert Reyerma

Contents

Foreword

Rondeau 1

Fairest Isle 2

Dance for the haymakers 3

Hornpipe 4

Dance 5

First act tune 6

Prelude 7

Fairies dance 8

Echo 9

Canaries 10

Foreword

These ten pieces by Henry Purcell (1659 - 1695) have been selected from the following works:

'Dioclesian' (1690)
'King Arthur' (1691)
'The Fairy Queen' (1692)

They have been transcribed for 13-course archlute, though many of them will fit nicely onto a 10-course instrument after some minor changes or retunings (e.g. lowering the 10th course to Bb).

In his 'Orpheus Britannicus' Purcell calls for 'a thorough bass of organ, harpsichord or theorbo-lute'. He also wrote a large number of solo works for organ and harpsichord (of which many are arrangements of theatre tunes).

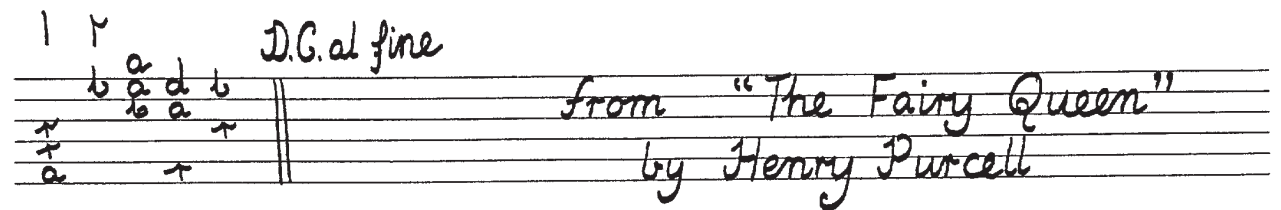
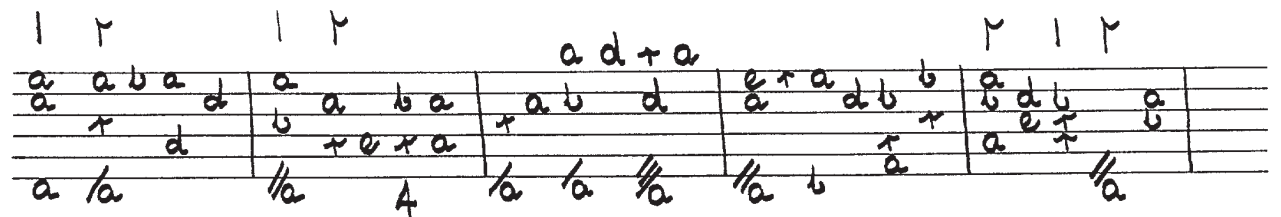
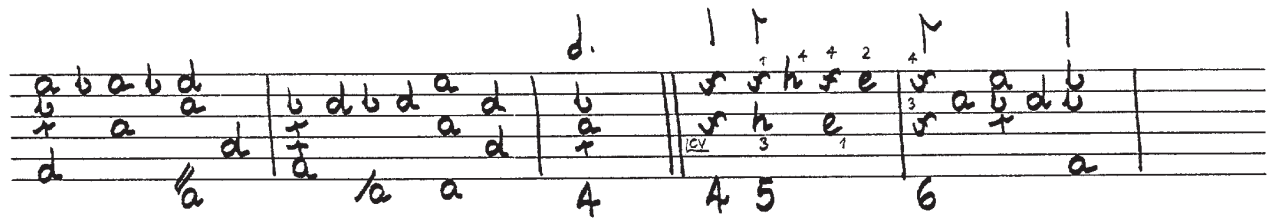
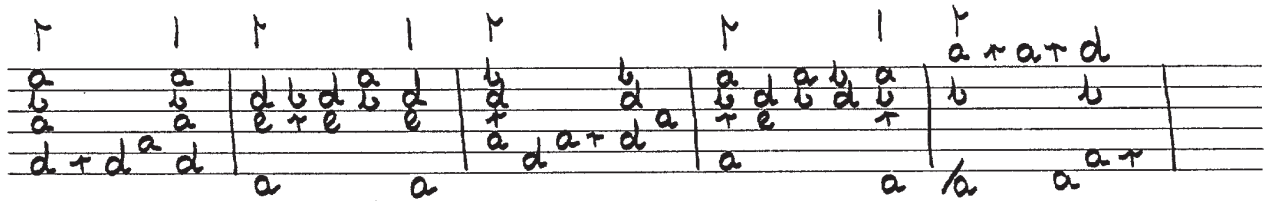
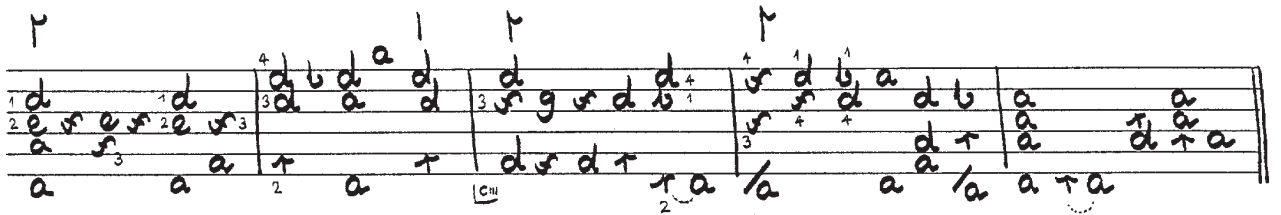
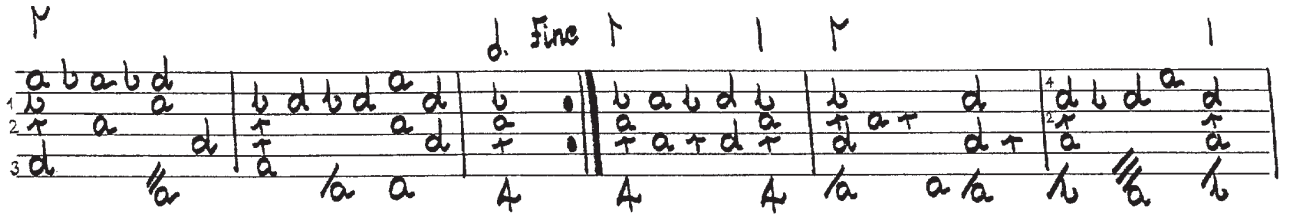
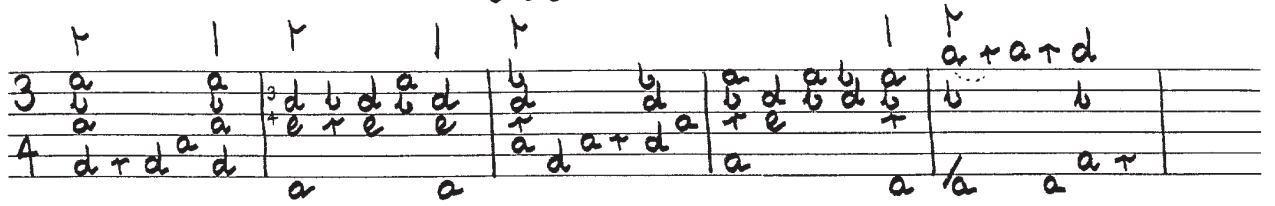
Unfortunately, there is no solo music by Purcell for any member of the lute family. This edition, appearing in the 300th anniversary of his death, is an attempt to fill this lacuna with some of his most catchy tunes.

In transcribing 2 - 4 part writing, the main aim has been to present the melody and bass line together with a feasibly playable amount of inner voices or realisation. Most of the transcriptions maintain their original keys, given a 'g'-lute tuning.

Editorial slurs are indicated with dotted lines.
Suggested trills are in brackets e.g. (x)r

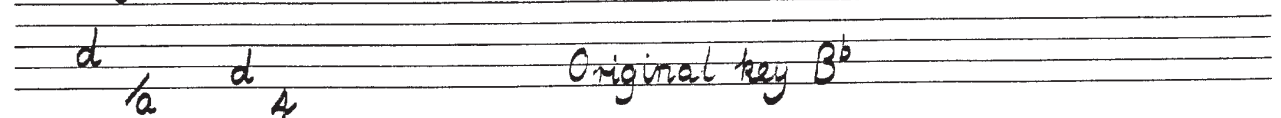
Jonathan Rubin
Bern, Switzerland
June 1995

1. Rondeau



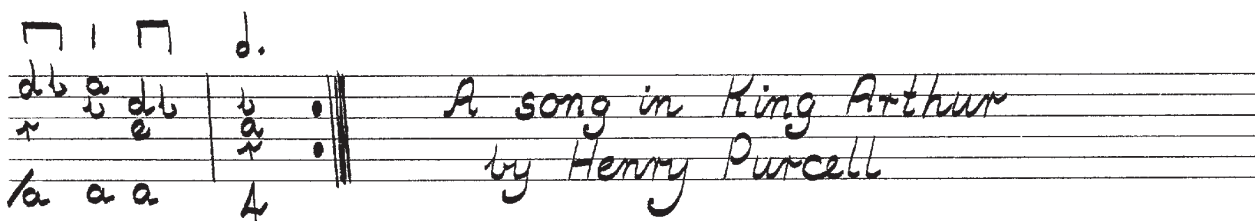
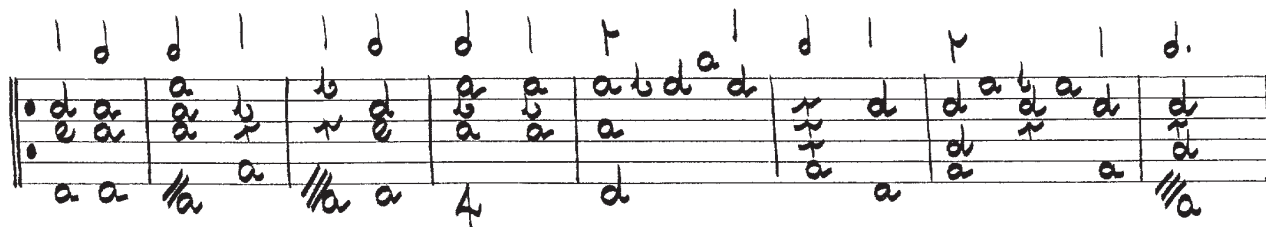
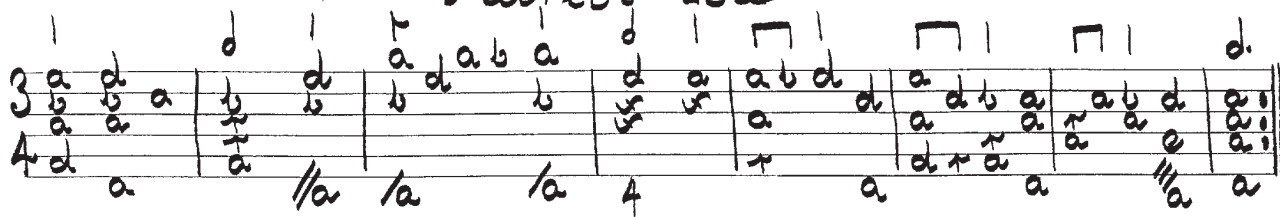
from "The Fairy Queen"
by Henry Purcell

Tuning:



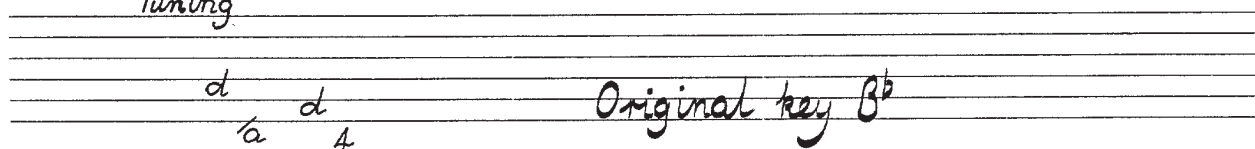
Original key B^b

2. Fairest Isle



A song in King Arthur
by Henry Purcell

Tuning



Original key B^b

3. Dance for the Haymakers

Handwritten musical score for 'Dance for the Haymakers'. The score is written on four systems of two staves each. The first system begins with a treble clef, a 6/4 time signature, and a key signature of one flat (B-flat). The melody is written in the treble staff, and the bass line is in the bass staff. The notation includes various note values (quarter, eighth, sixteenth notes), rests, and accidentals. The second system continues the melody and bass line. The third system includes a repeat sign and a key signature change to one sharp (F#). The fourth system concludes the piece with a double bar line and repeat dots. The score is written in a clear, legible hand.

from "The Fairy Queen"
by Henry Purcell

Tuning

e
a

Original key G

4. Hornpipe

Handwritten musical score for a Hornpipe. The score is written on two staves. The first staff begins with a treble clef and a key signature of one flat (B-flat). The second staff begins with a bass clef and a key signature of one flat (B-flat). The music consists of a series of notes and rests, with some notes marked with fingerings (1-4). The score includes a key signature change to G minor (two flats) and a double bar line. The title "Hornpipe" is written above the first staff.

Tuning

d
/a 4

Original key g minor

5. Dance

The musical notation is handwritten and consists of three systems of staves. The first system has two staves with notes and rests, including a 3/4 time signature. The second system has two staves with notes and rests, including a 4/4 time signature. The third system has two staves with notes and rests, including a 3/4 time signature. The notation is in a historical style with various clefs and accidentals.

Dance following the Shepherds' dialogue in
Dioclesian by Henry Purcell Original key g minor

Tuning

The tuning notation is handwritten and consists of two staves with notes and rests, including a 4/4 time signature. The notation is in a historical style with various clefs and accidentals.

6. First Act Tune (Hornpipe)

Handwritten musical notation for the First Act Tune (Hornpipe). The notation is written on four systems of two staves each. The first staff of each system contains a melody line with notes and rests, and the second staff contains a bass line with notes and rests. The notation includes various musical symbols such as clefs, notes, rests, and bar lines. The key signature is one flat (B-flat). The piece ends with a double bar line and repeat dots.

First Act Tune (Hornpipe) from Dioclesian
by Henry Purcell. Original key d minor

Tuning

e

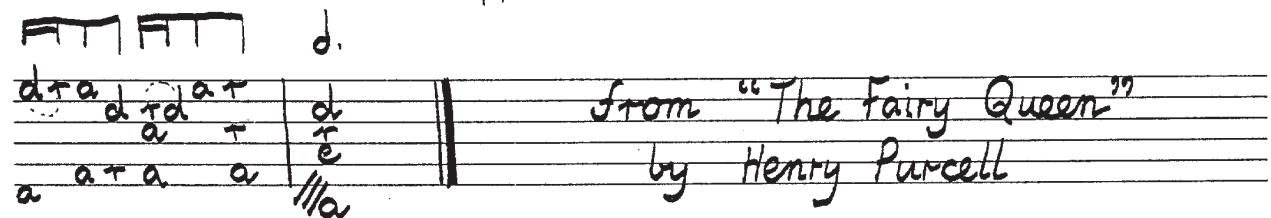
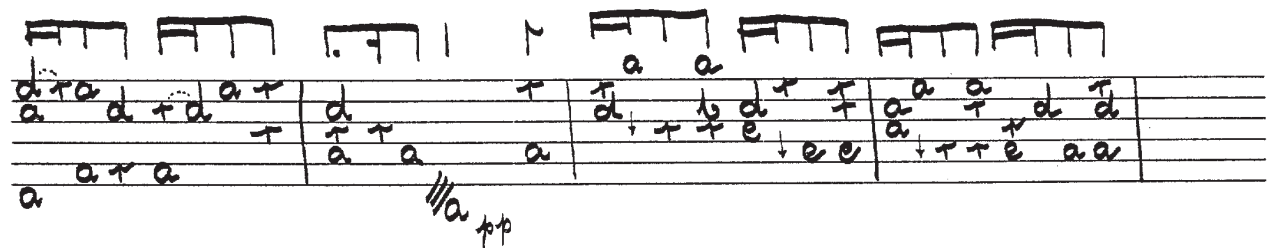
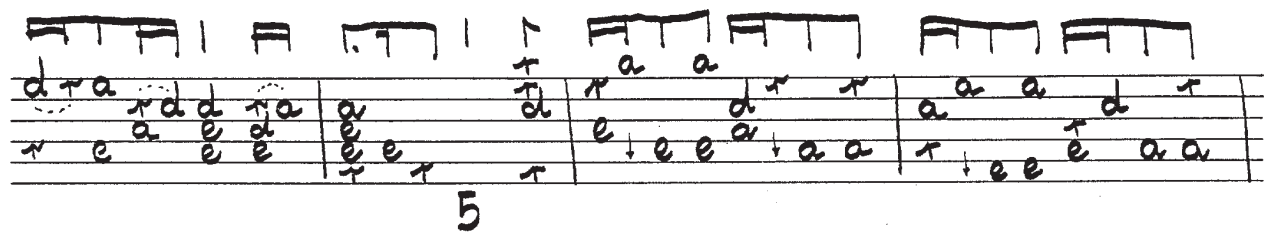
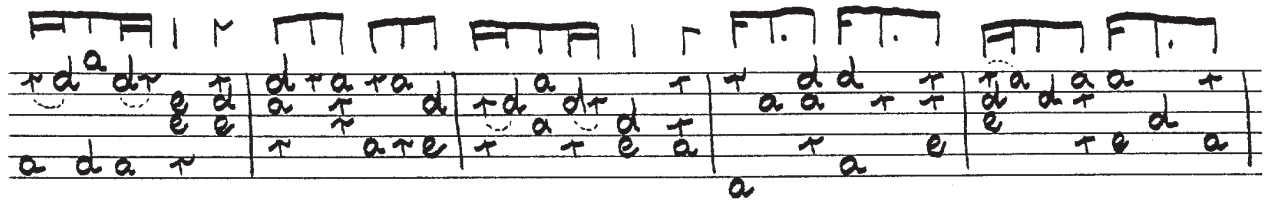
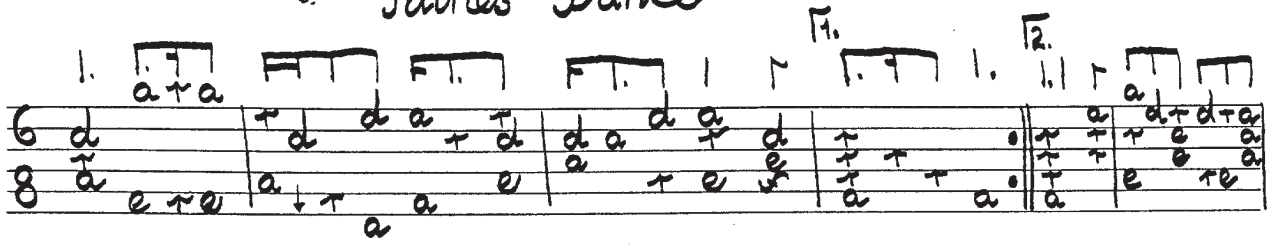
/a

7. Prelude

d.

Tuning

8. Fairies' Dance



Original key C

9. Echo

Handwritten musical score for "Echo" by Henry Purcell. The score is written on seven systems of two staves each. The notation includes various musical symbols such as notes, rests, accidentals, and dynamic markings (f, p, pp, ff). The piece is in C major and 3/4 time. The final system includes a double bar line and the text "From The Fairy Queen by Henry Purcell Original key C major".

Tuning

Handwritten musical notation for tuning, showing a single staff with notes and accidentals.

10. Canaries

Handwritten musical score for "Canaries" in 3/8 time. The score consists of three systems of two staves each. The first system has five measures, the second has six measures, and the third has five measures. The music features a melody in the upper staff and a bass line in the lower staff. Various musical notations are used, including slurs, ties, and dynamic markings like "f" and "p". The piece ends with a double bar line and repeat dots.

Canaries in Dioclesian

by Henry Purcell

Original key D major

Tuning

Handwritten musical notation for tuning, showing a single note "e" on a staff.



TREE EDITION