

2004 Schedule/Results (21-4, 4-2 SEC)

Date	Opponent	Time/Result
February		
13 (Fri.)	at Central Florida	W, 4-3 (10)
14 (Sat.)	at Central Florida	W, 17-4
15 (Sun.)	at Central Florida	L, 5-6 (10)
17 (Tue.)	UL-MONROE	W, 7-1
20 (Fri.)	JACKSONVILLE STATE	W, 6-1
21 (Sat.)	JACKSONVILLE STATE	W, 14-2
22 (Sun.)	JACKSONVILLE STATE	W, 19-1 (7)
27 (Fri.)	TEXAS STATE	W, 10-1
28 (Sat.)	TEXAS STATE	W, 2-1
29 (Sun.)	TEXAS STATE	W, 13-2
March		
2 (Tue.)	#8 Tulane	W, 6-0 #
5 (Fri.)	HOUSTON	W, 9-3
6 (Sat.)	HOUSTON	L, 5-10
7 (Sun.)	HOUSTON	W, 8-2
9 (Tue.)	at UL-Monroe	W, 6-1
12 (Fri.)	SOUTHEASTERN LA.	W, 7-1
13 (Sat.)	SOUTHEASTERN LA.	W, 5-1
16 (Tue.)	NEW ORLEANS	W, 14-0 (7)
19 (Fri.)	at South Carolina	W, 6-3 (11)
20 (Sat.)	at South Carolina	L, 12-5
21 (Sun.)	at South Carolina	W, 12-7
23 (Tue.)	at Centenary	W, 9-3
26 (Fri.)	MISSISSIPPI STATE	L, 7-3
27 (Sat.)	MISSISSIPPI STATE	W, 11-6
28 (Sun.)	MISSISSIPPI STATE	W, 14-3
30 (Tue.)	at New Orleans	6:30 p.m.
April		
2 (Fri.)	at Auburn	6:30 p.m.
3 (Sat.)	at Auburn	3 p.m.
4 (Sun.)	at Auburn	1:30 p.m.
6 (Tue.)	TULANE	6:30 p.m.
9 (Fri.)	ARKANSAS	6:30 p.m.
10 (Sat.)	ARKANSAS	2 p.m.
11 (Sun.)	ARKANSAS	1 p.m.
13 (Tue.)	NICHOLLS STATE	6:30 p.m.
14 (Wed.)	Southeastern La.	7 p.m. #
16 (Fri.)	GEORGIA	6:30 p.m.
17 (Sat.)	GEORGIA	2 p.m.
18 (Sun.)	GEORGIA	1 p.m.
20 (Tue.)	at Southern	6:30 p.m.
23 (Fri.)	at Tennessee	6 p.m.
24 (Sat.)	at Tennessee	6 p.m.
25 (Sun.)	at Tennessee	1 p.m.
27 (Tue.)	Tulane	7 p.m. \$
30 (Fri.)	ALABAMA	6:30 p.m.
May		
1 (Sat.)	ALABAMA	2 p.m.
2 (Sun.)	ALABAMA	1 p.m.
7 (Fri.)	at Kentucky	5:30 p.m.
8 (Sat.)	at Kentucky	1 p.m.
9 (Sun.)	at Kentucky	Noon
14 (Fri.)	VANDERBILT	6:30 p.m.
15 (Sat.)	VANDERBILT	2 p.m.
16 (Sun.)	VANDERBILT	1 p.m.
19 (Wed.)	SOUTHEASTERN LA.	6:30 p.m.
21 (Fri.)	at Ole Miss	6:30 p.m.
22 (Sat.)	at Ole Miss	3 p.m.
23 (Sun.)	at Ole Miss	1:30 p.m.
26-30	SEC Tournament (Hoover, Ala.)	
June		
4-6	NCAA Regional (sites TBA)	
11-13/12-14	NCAA Super Regional (sites TBA)	
18-27/28	College World Series (Omaha, Neb.)	

- Zephyr Field (Metairie, La.) \$ - Louisiana Superdome



LSU TIGERS

(21-4, #2)

at

New Orleans (14-12)

Tuesday, March 30 at 6:30 p.m. • Maestri Field (4,200) • New Orleans, La.

Radio: LSU Sports Network (Jim Hawthorne -- play-by-play, Bill Franques -- analyst)

TV: Jumbo Sports (Lyn Rollins -- play-by-play, Ronnie Rantz -- analyst)

Tigers Begin Four-Game Road Stretch at UNO

No. 2 LSU (21-4, 4-2 SEC) begins a four-game road stretch at 6:30 p.m. Tuesday, as the Tigers travel to Maestri Field to face New Orleans (14-12, 3-0 Sun Belt Conference).

The game marks LSU's first appearance at UNO's on-campus facility -- formerly known at Privateer Park -- since 1997. From 1998-2003, UNO played its home game versus LSU at Zephyr Field in Metairie, La.

The game can be heard on the LSU Sports Radio Network, including flagship WDGL-FM 98.1 in Baton Rouge. The radio broadcast may be also be accessed at www.LSUsports.net.

The contest will be televised live statewide by the Jumbo Sports Network, which includes KZUP-TV (Cable Ch. 13) in Baton Rouge.

The JSN telecast will be shown at 9 p.m. on a tape-delayed basis in the New Orleans area on WNOL-TV.

LSU, ranked No. 2 by *Collegiate Baseball* magazine this week after five consecutive weeks at No. 1, has won 10 of its last 12 games, including an SEC series victory over Mississippi State last weekend.

LSU resumes SEC action this weekend at Auburn in a three-game series at Plainsman Park.

UNO, a member of the Sun Belt Conference, has won five straight games, including an SBC series sweep of Arkansas State to begin league play.

The LSU-UNO Series

Tonight's game marks the second meeting this season between the clubs, as LSU posted a 14-0 victory over the Privateers on March 16 in Alex Box Stadium. The Tigers bolted to an 8-0 lead in the first inning and collected 12 hits in the game, including a homer by catcher Matt Liuzza. LSU pitchers Clay Dirks, Michael Bonura, Greg Smith and Jason Determann combined to blank the Privateers on just three hits. The game was stopped in the seventh inning by mutual consent of the head coaches.

The Tigers enter tonight's game with 7-0 mark this season against Louisiana schools. LSU has won 10 straight games versus its in-state foes over the last two seasons.

LSU leads the all-time series with UNO, 42-30, and the Tigers have won 12 of the last 13 meetings with the Privateers. UNO's only win in that span was a 5-4 victory last season at Zephyr Field.

Laval has a 7-7 career mark against the Privateers, including a 4-1 mark as LSU's coach. Bush is 1-8 versus the Tigers during his five-year career.

LSU has a 35-8 (.814) record against Louisiana schools during Laval's three-year tenure as head coach.

Pitching Matchup

LSU - So. LHP Jason Determann (2-0, 1.72 ERA, 15.2 IP, 2 BB, 10 SO)
 UNO - Sr. RHP Chris Bourgeois (0-1, 9.64 ERA, 4.2 IP, 7 BB, 4 SO)

LSU		UNO	
Record	21-4 (4-2 SEC)	Record	14-12 (3-0 Sun Belt)
Ranking	No. 2 Collegiate Baseball No. 3 Baseball America No. 3 ESPN/Sports Weekly	Ranking	Not Ranked
Coach	Smoke Laval	Coach	Randy Bush
Career Record	351-207-1 (10th year)	Career Record	131-129 (fifth year)
LSU Record	110-48-1 (third year)	UNO Record	131-129 (fifth year)
Laval vs. UNO	7-7	Bush vs. LSU	1-8

Tracking the Tigers

Week	BA	CB	ESPN/SW
Preseason	2	3	3
Feb. 2	2	3	3
Feb. 9	2	3	3
Feb. 16	2	4	5
Feb. 23	3	1	5
March 1	3	1	4
March 8	5	1	5
March 15	4	1	5
March 22	3	1	3
March 29	3	2	3

Baseball America (March 29)

- Stanford (20-3)
- Texas (28-4)
- LSU (21-4)**
- Rice (20-6)
- Miami, Fla. (22-5)
- South Carolina (21-4)
- Long Beach State (18-7)
- Ole Miss (20-3)
- Texas A&M (23-6)
- Wichita State (12-2)
- Tulane (19-7)
- Notre Dame (17-3)
- Auburn (20-6)
- Arizona State (21-7)
- Southern Miss (20-4)
- Florida (24-5)
- UC-Irvine (18-6)
- East Carolina (21-6)
- Nebraska (16-5)
- North Carolina (20-6)
- Florida State (21-7)
- Florida Atlantic (25-5)
- Central Florida (23-5)
- Tennessee (21-5)
- Vanderbilt (18-5)

Collegiate Baseball (March 29)

- Stanford (20-3)
- LSU (21-4)**
- Texas (28-4)
- Ole Miss (20-3)
- Notre Dame (17-3)
- Miami, Fla. (22-5)
- Rice (20-6)
- Florida (24-5)
- North Carolina (20-6)
- Florida State (21-7)
- South Carolina (21-4)
- UC-Irvine (18-6-1)
- Long Beach State (18-7)
- Wichita State (12-2)
- Auburn (20-6)
- Tennessee (21-5)
- Arizona State (21-7)
- Texas A&M (23-6)
- Tulane (19-7)
- Nebraska (16-5)
- Southern Miss (20-4)
- North Carolina State (17-8)
- Florida Atlantic (25-5)
- Central Florida (23-5)
- College of Charleston (20-5)

The LSU Lineup

Player	Pos.	Cl.-Exp.	B/T	Avg.	HR	RBI	Notable
Matt Liuzza	C	So.-1L	R/R	.340	6	23	2-for-11 last week with 1 RBI
Clay Harris	3B/1B	Jr.-2L	R/R	.287	1	13	3-for-10 vs. Miss. St. with 1 RBI
Blake Gill	2B	Jr.-2L	L/R	.343	0	15	6-for-13 vs. Miss. St. w/ 2 2B, 1 RBI
Ivan Naccarata	3B	Sr.-1L	L/R	.254	3	17	3-for-6 vs. MSU w/ 2 HR, 1 2B, 7 RBI
or							
Will Harris	1B	So.-1L	R/R	.436	2	13	2-for-10 with 2 RBI last week
Derek Hebert	SS	Jr.-JC	L/R	.314	1	5	1-for-6 in three games last week
or							
Matt Horwath	SS	Fr.-RS	R/R	.326	1	9	3-for-7 last wk. w/ 2 2B, 3 RBI
Ryan Patterson	LF	Jr.-1L	R/R	.327	4	27	Presently riding a 9-game hit streak
J.C. Holt	CF	Jr.-2L	L/R	.422	3	20	6-for-16 last wk. w/3 2B, 1 HR, 4 RBI
Jon Zeringue	RF	Jr.-2L	R/R	.394	7	24	5-for-9 vs. MSU with 1 HR, 6 RBI
Nick Stavinoha	DH	Jr.-JC	R/R	.320	4	18	6-for-16 last wk. w/2 2B, 1 HR, 3 RBI

Tigers Win Home Series Over Mississippi State Last Weekend

LSU improved its SEC record to 4-2 last weekend, as the Tigers won two of three games over No. 24 Mississippi State in Alex Box Stadium.

With the two victories over MSU, LSU improved its record to 5-2 this year against Top 25 opponents. Seventeen of the Tigers' 21 overall wins have come by a margin of five runs or more, including the victories over MSU (11-6, 14-3).

Senior third baseman Ivan Naccarata launched two homers and collected seven RBI in Sunday's 14-3 victory over Mississippi State. Naccarata's seven-RBI output was the largest by an LSU player since March 3, 2001, when former Tiger first baseman Bryan Moore also recorded seven RBI in a game at Arizona State.

Junior right fielder Jon Zeringue led LSU in hitting over the weekend, batting .556 (5-for-9) with one homer, six RBI and six runs. Zeringue also walked three times, recorded one steal and posted a .667 on-base percentage. Zeringue is hitting .394 (37-for-94) this season, and he leads LSU in homers (seven) and doubles (12), and he is second on the club with 24 RBI.

As a team, the Tigers hit .333 (35-for-105) in the MSU series with six homers, six doubles and 28 runs. LSU collected a total of 31 hits in Games 2 and 3 after being held to just six hits in the Game 1 loss on Friday. The six-hit outing broke a string of 13 consecutive games in which the Tigers had reached double figures in hits.

Freshman left-hander Clay Dirks, making his first career SEC start, defeated Mississippi State on Saturday with a strong eight-inning outing. Dirks limited the Bulldogs to two runs on five hits with one walk and seven strikeouts as he improved to 5-0 on the year. Dirks' ERA stands at a team-best 1.64 and opponents are batting just .179 against him.

LSU reached the 20-win mark this year in its 24th game (Saturday's 11-6 victory over MSU); the Tigers didn't reach the 20-win plateau last season until their 30th game.

Liuzza Named SEC Player of the Week on March 22

LSU catcher **Matt Liuzza**, a sophomore from Metairie, La., was named March 22 as the SEC Player of the Week after leading the Tigers to a series victory at South Carolina.

Liuzza hit three homers and one double in the series, collecting five RBI and posting a .933 slugging percentage. He hit two homers in Game 3 (a 12-7 victory), becoming the first LSU player to have a multi-homer game this season.

Liuzza's two homers came against USC ace Matt Campbell, who had not allowed run in 27.2 innings entering the game. Liuzza hit a solo shot in the second inning to tie the game at 1-1, and his three-run blast in the fourth gave the Tigers a 4-1 lead they would never relinquish.

Liuzza was 6-for-15 (.353) at the plate in LSU's four games from March 16-21 -- including a 14-0 victory over UNO -- with one double, four homers, seven RBI and five runs.

Liuzza compiled a 14-game streak -- the longest of his career -- from Feb. 14-March 12, exceeding the 12-game streak he compiled during the 2003 season. During the 2004 streak, Liuzza batted .407 (22-for-54) with five doubles, two homers, 13 RBI and 10 runs.

Liuzza's name appears on the first Johnny Bench Award "Watch List" released in early March. The Johnny Bench Award is given annually to the nation's outstanding collegiate catcher. Former LSU Brad Cresse was the first recipient of the award in 2000.

The 2004 Johnny Bench Award ceremony will take place on June 30, in Wichita, Kan.

Dirks Named To Roger Clemens Award Watch List

Freshman left-hander **Clay Dirks**' name has been added to the "Watch List" for the 2004 Roger Clemens Award, which is given to the nation's outstanding collegiate pitcher. The "Cy Young Award" of college baseball, the Clemens Award ceremony will take place on July 15 in Houston.

In a four-hit shutout of Tulane on March 2, Dirks allowed just two Green Wave runners to reach second base, and he retired 20 of the final 22 batters he faced. For that effort, Dirks was named the SEC Pitcher of the Week by the league office, and he earned National Pitcher of the Week recognition from the National Collegiate Baseball Writers Association.

Dirks, a redshirt freshman from Hernando, Miss., allowed just one double and three singles against Tulane, and recorded one walk and seven strikeouts. Dirks, who was making just the third start of his collegiate career, missed the 2003 season after undergoing surgery on his elbow in the summer of 2002.

Dirks' gem marked the first complete-game shutout for an LSU pitcher since Brian Wilson blanked Florida on five hits on March 14, 2003. The game was LSU's first shutout as a team since April 15, 2003, when the Tigers blanked Tulane, 8-0, in Alex Box Stadium.

Smoke Gets Career Victory No. 350

Smoke Laval, in his third season as the Tigers' head coach, earned his 350th career victory on March 27 when the Tigers defeated Mississippi State, 11-6. The 2003 SEC Coach of the Year, Laval has a 110-48-1 (.695) mark at LSU and a 351-207-1 (.629) record in 10 seasons as a collegiate head coach. He served as the head coach at Louisiana-Monroe for seven seasons (1994-2000) prior to taking the reins of the LSU program as head coach. Laval was an LSU assistant coach for 10 seasons (1984-93), helping to lead the Tigers to two national championships (1991, 1993), six College World Series appearances and five SEC titles.

Will Harris Named Louisiana Player of the Week on March 16

Sophomore 1B Will Harris, the younger brother of LSU's all-SEC infielder Clay Harris, batted .875 (7-for-8) during the week of March 8-14 with one homer, six RBI and two runs. He was named on March 16 as the Louisiana Player of the Week by the Louisiana Sportswriters Association.

Will Harris was 4-for-4 at the plate with one run and two RBI in LSU's win over UL-Monroe March 9, and he launched a grand slam -- LSU's first this season -- in the Tigers' victory over Southeastern Louisiana March 12.

From March 7-12, Will Harris collected eight hits in eight at-bats over three games versus Tulane, UL-Monroe and Southeastern Louisiana. The streak began with an eighth-inning single versus Tulane (March 2), and it ended with a fourth-inning strikeout versus SLU (March 13).

Mestepey Seeks to Enter Top 10 List for LSU Victories

Junior left-hander **Lane Mestepey** earned his 25th career victory March 13 against Southeastern Louisiana as he pitched 6.2 innings, allowing just one run on eight hits with four walks and four strikeouts.

Mestepey, a two-time all-SEC selection, needs one more victory to move into the LSU Top 10 list for pitching wins. He is currently one victory behind Mark Guthrie (26 wins, 1984-87) for 10th place on the all-time LSU list.

Mestepey has a 25-9 mark during his three seasons on the mound for the Tigers.

The LSU Injury Report

INF Bryan Harris -- Harris, a transfer from Santa Ana (Calif.) College, was projected to be the Tigers' starter at third base; however, a hernia operation limited his participation during fall practice, and he underwent arthroscopic surgery in January to remove bone chips from his right knee. He is scheduled to receive a medical redshirt this season.

ESPN/Sports Weekly (March 29)

1. Stanford (22) (20-3)
2. Texas (16) (28-4)
3. **LSU (2) (21-4)**
4. Rice (20-6)
5. Miami, Fla. (22-5)
6. South Carolina (21-4)
7. Ole Miss (20-3)
8. Long Beach State (18-7)
9. Notre Dame (17-3)
10. Arizona State (21-7)
11. Auburn (20-6)
12. Wichita State (12-2)
13. Florida (24-5)
14. Texas A&M (23-6)
15. Southern Miss (20-4)
16. Tulane (19-7)
17. Nebraska (16-5)
18. North Carolina (20-6)
19. Florida State (21-7)
20. Florida Atlantic (25-5)
21. UC-Irvine (18-6-1)
22. East Carolina (21-6)
23. Tennessee (21-5)
24. North Carolina State (17-8)
25. Vanderbilt (18-5)

2004 SEC Standings (March 29)

Eastern Division			
Team	SEC	Pct.	Overall
Florida	5-1	.833	24-5
Tennessee	3-3	.500	21-5
Vanderbilt	3-3	.500	18-5
Georgia	2-4	.333	16-8
Kentucky	2-4	.333	14-10
South Carolina	2-4	.333	21-4
Western Division			
Team	SEC	Pct.	Overall
Ole Miss	5-1	1.000	20-3
LSU	4-2	.667	21-4
Arkansas	3-3	.500	17-9
Auburn	3-3	.500	20-6
Alabama	2-4	.333	17-9
Miss. State	2-4	.333	14-8

This Week in the SEC (March 30-31)

(All times are Central)

Tuesday, March 30

Wichita State at Arkansas • 6:35 p.m.
 Auburn at Georgia Tech • 6 p.m.
 Clemson at Georgia • 6 p.m.
 LSU at New Orleans • 6:30 p.m.
 SE Louisiana at Ole Miss • 6:30 p.m.
 UAB at Mississippi State • 6:30 p.m.
 Belmont at Vanderbilt • 6 p.m.

Wednesday, March 31

Alabama at South Alabama • 6 p.m.
 Florida State at Florida • 5:30 p.m.
 Georgia at Clemson • 6:15 p.m.
 Eastern Kentucky at Kentucky • 3 p.m.
 SE Louisiana at Ole Miss • 6:30 p.m.
 UL-Monroe at Miss. State • 6:30 p.m.
 South Carolina vs. North Carolina • 6:15 p.m.
 Wofford at Tennessee • 6 p.m.
 Austin Peay at Vanderbilt • 6 p.m.

2004 LSU TV Schedule

Feb. 14	at UCF	Noon	JSN
Feb. 15	at UCF	Noon	JSN
March 2	at Tulane	7 p.m.	JSN
March 9	at UL-Monroe	6:30 p.m.	JSN
March 21	at South Carolina	12:30 p.m.	JSN
March 30	at New Orleans	6:30 p.m.	JSN
April 4	at Auburn	1:30 p.m.	JSN
April 10	Arkansas	2 p.m.	Fox
April 11	Arkansas	1 p.m.	Cox
April 16	Georgia	6:30 p.m.	Cox
April 24	at Tennessee	6 p.m.	CSS
April 25	at Tennessee	1 p.m.	JSN
April 27	vs. Tulane (tape-delayed)	10 p.m.	Cox
April 30	Alabama	6:30 p.m.	Cox
May 9	at Kentucky	Noon	JSN
May 14	Vanderbilt	6:30 p.m.	Cox
May 22	at Ole Miss	3 p.m.	Fox
May 23	at Ole Miss	1:30 p.m.	JSN

JSN - Jumbo Sports Network

Cox - Cox Sports Television

Fox - Fox Sports Southwest (SEC-TV)

CSS - Comcast Sports Southeast

All Times are Central and Subject to Change

LSU-TU Seek to Re-Claim Attendance Mark

Two years ago, the state of Louisiana laid claim to the college baseball single game attendance record when an April 2002 game between Tulane and LSU drew a crowd of 27,673 in the Louisiana Superdome.

But on March 11, 2004, a crowd of 40,106 fans packed San Diego's brand new Petco Park to watch a college game between San Diego State and Houston, breaking the mark set at that Tulane-LSU contest and threatening the attendance dominance of Louisiana college baseball fans.

The LSU-Tulane game on April 27, 2004 provides an opportunity for Louisiana to restake its claim as the nation's best as LSU and Tulane, once again ranked among the Top 20 teams in the country, will meet for the third time this season in a 7 p.m. contest in the Superdome.

Tickets for the game are currently on sale and can be purchased by calling the Tulane Ticket Office at (504) 861-WAVE, the LSU Ticket Office at 225-LSU-2184 or 1-800-960-8587, online at www.ticketmaster.com or by visiting any Ticketmaster Outlet.

Ticket prices are \$15 and \$12 for adult reserved seats and \$8 for youth reserved sections. General admission tickets are \$6 for adults and \$4 for youth.

INF Matt Horwath -- Horwath, a medical redshirt in 2003 after undergoing right shoulder surgery, started LSU's first seven games at shortstop this season before experiencing soreness in the shoulder. An MRI was performed on the shoulder on March 2, and the results showed no new injuries. Horwath has been cleared to play as long as he does not experience continued soreness in the shoulder.

RHP Brandon Nall -- LSU's closer at the beginning of 2003, he pitched in just six games last season before suffering a torn labrum in his shoulder, which required surgery. He could return to the mound at some point this season, depending upon the progress of his rehabilitation.

OF Quinn Stewart -- A starter in 37 games last season, Stewart had the hamate bone in his left wrist removed in early March, and he will receive a redshirt this season. Even without the wrist injury, Stewart likely would have received a redshirt this year due to the tremendous depth LSU has in the outfield. With current starting outfielders Jon Zeringue, J.C. Holt and Ryan Patterson expected to be drafted this June, Stewart should be one of the outfield starters in 2005.

SEC Coaches Select LSU to Repeat as League Champion

The LSU Tigers are the favorite to win the Southeastern Conference Baseball Championship, as voted by the league's 12 baseball coaches in the 13th annual preseason SEC poll. The Tigers seek to capture their 14th SEC Championship, having won or shared the title three times in the past eight seasons (1996, 1997 & 2003) and seven times since 1990. LSU won the both the overall SEC Championship and Western Division titles in 2003. In the overall SEC Champion vote, LSU received 11 of the 12 championship votes in the poll, the most possible by one team. South Carolina received the other vote.

In addition to picking a preseason SEC champion, the league's head coaches voted a predicted order of finish in the SEC Eastern and Western Divisions. In the Eastern Division, South Carolina was the favorite with 63 points. Florida came in second with 58 points and Vanderbilt third with 42 points. LSU was the predicted winner in the Western Division with a total of 66, again collecting the maximum points for a team. Auburn was second with 51, while Ole Miss finished third with 41.

SEC Pre-Season Coaches Poll

Team	Pts.	'03 SEC Rec/Finish
Eastern Division		
1. S. Carolina (8)	63	19-11/1st
2. Florida (4)	58	13-16-1/3rd
3. Vanderbilt	42	14-165/2nd
4. Georgia	36	10-20/5th
5. Tennessee	30	13-17/4th
6. Kentucky	17	9-20/6th
Western Division		
1. LSU (11)	66	20-9-1/1st
2. Auburn (1)	51	18-12/2nd
3. Ole Miss	41	17-13/4th
4. Alabama	38	14-16/t5th
5. Miss. State	30	17-12/3rd
6. Arkansas	20	14-16/t5th

() - First Place Votes

SEC Champion: LSU (11); South Carolina (1)



41
Nate Bumstead

RH Pitcher
6-1, 210, R-R, Sr., 1L
Las Vegas, Nev. (College of Southern Idaho)

- Emerged as one of the top pitchers in the Southeastern Conference in 2003, earning second-team all conference honors
- Injured right shoulder in Feb. 3 intrasquad game; an MRI revealed a torn labrum, however, team doctor has cleared him to pitch
- * Defeated Miss. State (March 28), limiting the Bulldogs to two earned runs on 10 hits in 7.1 innings with no walks and two Ks
- Defeated Houston (March 7), pitching a season-high 8.1 innings and allowing two runs on nine hits with seven strikeouts

Bumstead's LSU Career Highs

Innings: 9.0 (twice)
Strikeouts: 10 vs. Ole Miss (4/13/03)
Hits Allowed: 11 vs. Mississippi State (5/23/03)
Runs: 8 (twice)
Earned Runs: 8 (twice)
Walks: 4 vs. Tennessee (4/27/03)



33
Jason Determann

Pitcher
5-10, 170, R-L, So., 1L
Baton Rouge, La. (Catholic HS)

- Outstanding southpaw who earned 2003 Freshman all-America honors as a long reliever and part-time starter
- 10-0 career record at LSU
- Fired 11 consecutive scoreless innings before allowing two runs at Centenary (March 23)
- Earned victory in Tigers' season opener at Central Florida (Feb. 13), allowing one run on three hits in four innings with one walk and two strikeouts
- Picked up the win over Texas State (Feb. 28) with 2.1 relief innings - no runs, one hit, one walk and two Ks

Determann's LSU Career Highs

Innings: 8.0 vs. New Orleans (4/30/03)
Strikeouts: 7 vs. Nicholls State (4/2/03)
Hits Allowed: 8 (twice)
Runs: 6 vs. SE Louisiana (4/23/03)
Earned Runs: 5 vs. SE Louisiana (4/23/03)
Walks: 4 vs. South Carolina (6/15/03)



13
Clay Dirks

LH Pitcher
6-4, 235, L-L, Fr., RS
Hernando, Miss. (Hernando HS)

- Named National Pitcher of the Week (NCBWA) and SEC Pitcher of the Week after firing a four-hit shutout (1 BB, 7 Ks) versus eighth-ranked Tulane on March 2 at Zephyr Field in Metairie, La.
- Allowed just two Tulane base runners to advance to second base and retired 20 of the final 22 batters he faced
- Pitched 17.1 consecutive innings without allowing an earned run in a three-game stretch from Feb. 22-March 9
- * Defeated Miss. State (March 27) in first career SEC start, limiting the Bulldogs to two runs on five hits in eight innings with one walk and seven Ks
- Named to the "Watch List" for the 2004 Roger Clemens Award, given to the nation's outstanding collegiate pitcher

Dirks' LSU Career Highs

Innings: 9 vs. Tulane (3/2/04)
Strikeouts: 7 vs. Tulane (3/2/04)
Hits Allowed: 6 at Central Florida (2/15/04)
Runs: 3 at Central Florida (2/15/04)
Earned Runs: 3 at Central Florida (2/15/04)
Walks: 3 at Central Florida (2/15/04)



29
Jordan Faircloth

Pitcher
6-3, 215, R-R, Jr., 1L
Alexandria, La. (Alexandria HS)

- Talented pitcher with a side-arm delivery who will continue to contribute as a reliever in 2004 after making his LSU debut last season
- * Pitched brilliantly in relief vs. Miss. State (March 26), working five shutout innings with three hits, two walks and two strikeouts
- Earned first career save vs. SE Louisiana (March 13), working 2.1 innings with no runs, four hits, no walks and one strikeout

Faircloth's LSU Career Highs

Innings: 5.0 vs. Miss. State (3/26/04)
Strikeouts: 3 at Centenary (3/23/04)
Hits Allowed: 4 (three occasions)
Runs: 3 (twice)
Earned Runs: 3 (twice)
Walks: 2 (twice)



3
Blake Gill

Infielder
5-10, 190, L-R, Jr., 2L
Bradenton, Fla. (Manatee HS)

- Talented player who earned 2003 second-team all-SEC recognition at second base
- * Hit .462 (6-for-13) in Miss. State series with two doubles, four runs and one RBI
- * Tied career-high with 4 hits vs. Miss. State on March 28
- Has also produced three 3-hit games: at UCF (Feb. 15), vs. Houston (March 5), vs. SE Louisiana (March 13)

Gill's LSU Career Highs

At-Bats: 6 at Georgia (3/22/03)
Hits: 4 vs. Mercer (2/17/02); 4 vs. Miss. State (3/28/04)
Runs Scored: 3 (three occasions)
Doubles: 1 (several occasions)
Triples: 1 (several occasions)
Home Runs: 1 (several occasions)
RBI: 6 vs. Georgia (4/14/02)
Stolen Bases: 1 (several occasions)



21
Clay Harris

Infielder
6-4, 230, R-R, Jr., 2L
Slidell, La. (Slidell HS)

- * Powerful slugger who became a regular in the LSU lineup last season in early March and emerged as a 2003 first-team all-SEC performer at first base; has played this season as starter at both first base and third base
- Already has three triples this season after recording no 3Bs in his first two LSU seasons
- 4- hits in South Carolina series (March 19-21) including one double
- Launched a homer and drove in four runs at UCF (Feb. 14)

C. Harris' LSU Career Highs

At-Bats: 6 (three occasions)
Hits: 3 (several occasions)
Runs Scored: 3 at Alabama (3/30/03)
Doubles: 2 (twice)
Triples: 1 (three occasions)
Home Runs: 2 (three occasions)
RBI: 6 vs. Ole Miss (4/13/03)
Stolen Bases: 1 vs. Miss. State (5/23/03)

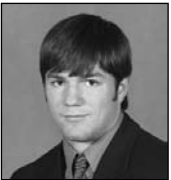


25
Will Harris
 First Baseman
 6-3, 240, R-R, So., 1L
 Slidell, La. (Slidell HS)

- Named Louisiana Player of the Week on March 16 after batting .875 (7-for-8) in a three-game stretch (vs. UL-Monroe and SE La.) with a grand slam and six RBI
- Recorded eight hits in eight at-bats in a four-game stretch from March 2-13
- 4-for-4 at UL-Monroe (March 9) with two RBI
- 2-for-2 with a grand slam - LSU's only slam this season -- vs. SE Louisiana (March 12)

W. Harris' LSU Career Highs

At-Bats: 5 at Georgia (3/22/03)
 Hits: 4 at UL-Monroe (3/9/04)
 Runs Scored: 2 (several occasions)
 Doubles: 1 (several occasions)
 Triples: none
 Home Runs: 1 (four occasions)
 RBI: 4 vs. SE Louisiana (3/12/04)
 Stolen Bases: none



2
Derek Hebert
 Infielder
 5-10, 180, L-R, Jr., JC
 New Iberia, La. (El Camino College)

- Excellent all-around prospect that transferred to LSU after one year at El Camino College in Torrance, Calif.
- Has started 11 games at shortstop as regular SS Matt Horwath has been bothered at times by a sore arm
- Has recorded five two-hit games this season

Hebert's LSU Career Highs

At-Bats: 4 (several occasions)
 Hits: 2 (several occasions)
 Runs Scored: 2 (three occasions)
 Doubles: 1 (four occasions)
 Triples: none
 Home Runs: 1 at Central Florida (Feb. 14)
 RBI: 1 (several occasions)
 Stolen Bases: none



1
J.C. Holt
 Outfielder
 5-9, 170, L-R, Jr., 2L
 Sieper, La. (Oak Hill HS)

- A 2004 pre-season all-American who was named in 2003 as the MVP of the Cape Cod Baseball League
- Batting average has remained above .400 for 15 straight games, since a 4-for-5 outing (one 2B, three RBI, two runs) at Tulane (March 2)
- 10-game hit streak from Feb. 22-March 12, batting .438 (21-for-48) during the streak with three doubles, one triple, one homer, nine RBI and 12 runs

Holt's LSU Career Highs

At-Bats: 6 (several occasions)
 Hits: 4 (several occasions)
 Runs Scored: 3 (several occasions)
 Doubles: 2 (twice)
 Triples: 1 (several occasions)
 Home Runs: 2 vs. Northeastern (5/30/03)
 RBI: 5 vs. Northeastern (5/30/03)
 Stolen Bases: 3 vs. Northwestern St. (2/8/03)



34
Matt Horwath
 Infielder
 5-9, 175, R-R, Fr., RS
 Lake Mary, Fla. (Lake Mary HS)

- Skilled infielder who played as LSU's starting shortstop for the first eight games of the 2003 season before suffering a right shoulder injury that required surgery
- Has missed 11 games this season due to soreness in his surgically-repaired shoulder
- 2-for-3 with one HR and two RBI at Central Florida (Feb. 14)

Horwath's LSU Career Highs

At-Bats: 5 vs. Kansas (2/14/03)
 Hits: 3 vs. UL-Monroe (2/17/04)
 Runs Scored: 2 (several occasions)
 Doubles: 1 (several occasions)
 Triples: none
 Home Runs: 1 (twice)
 RBI: 2 (three occasions)
 Stolen Bases: 1 vs. Northwestern St. (2/8/03)



14
Matt Liuzza
 Catcher
 6-0, 190, R-R, So., 1L
 Kenner, La. (Rummel HS)

- Played brilliantly last season as a true freshman, starting 54 games at catcher and leading the Tigers in hitting during the post-season
- Has been named to the "Watch List" for the 2004 Johnny Bench Award, given to the nation's outstanding collegiate catcher
- Named SEC Player of the Week March 22 after leading LSU to series win over S. Carolina
- Career-best 14-game hit streak from Feb. 14-March 9; batted .407 (22-for-54) during the streak with five doubles, two homers, 13 RBI and 10 runs

Liuzza's LSU Career Highs

At-Bats: 5 (several occasions)
 Hits: 3 (four occasions)
 Runs Scored: 3 (twice)
 Doubles: 2 vs. Auburn (5/10/03)
 Triples: none
 Home Runs: 2 at South Carolina (3/21/04)
 RBI: 4 at South Carolina (3/21/04)
 Stolen Bases: 1 vs. Northwestern St. (2/9/03)



35
Justin Meier
 RH Pitcher
 6-0, 210, R-R, So., 1L
 Windermere, Fla. (West Orange HS)

- Superb hurler who made an immediate impact last season as a true freshman, pitching in the SEC weekend rotation and earning '03 Freshman all-America recognition
- Four wins in his last six starts; has not allowed more than three earned runs in any of his seven starts this season
- * Tied career-high with eight Ks at South Carolina (March 19); limited the Gamecocks to three runs on seven hits in 8.1 innings with three walks
- Defeated SE Louisiana (March 12), limiting the Lions to one run on six hits in seven innings with two BB and two Ks
- Limited Texas St. (Feb. 27) to just one run on four hits in 7.1 innings with two BB and two Ks

Meier's LSU Career Highs

Innings: 9.0 (twice)
 Strikeouts: 8 vs. South Carolina (4/4/03);
 8 vs. Jacksonville State (2/20/04);
 8 at South Carolina (3/19/04)
 Hits Allowed: 12 vs. Baylor (6/8/03)
 Runs: 7 vs. Mississippi State (3/26/04)
 Earned Runs: 5 (twice)
 Walks: 5 at Mississippi State (5/2/03)



46
Lane Mestepey

LH Pitcher
6-0, 195, L-L, Jr., 2L
Zachary, La. (Central Private HS)

- LSU's No. 1 pitcher in 2001 and 2002; returned to the mound this season after receiving a medical redshirt in 2003 due to a shoulder injury
- A two-time first-team all-SEC selection with a 25-9 career record in 43 starts
- Has allowed only one run in four of his six starts this season
- Defeated Central Florida (Feb. 14) in his first outing in 20 months, limiting the Knights to one run on five hits in five innings with two walks and one strikeout
- Pitched season-high 6.2 innings in defeating SE Louisiana (March 13), limiting SLU to one run on eight hits with four walks and four strikeouts

Mestepey's LSU Career Highs

Innings: 10.0 at Tulane (6/1/01)
Strikeouts: 8 vs. Long Beach State (3/2/02)
Hits Allowed: 13 vs. Minnesota (5/25/01)
Runs: 8 (twice)
Earned Runs: 8 vs. Minnesota (5/25/01)
Walks: 5 at Ole Miss (3/23/02)



7
Ivan Naccarata

Infielder
5-10, 185, L-R, Sr., 1L
Longueuil, Quebec (Chipola JC)

- Joined the LSU program in January, 2003, and made an immediate impact as the Tigers' starting third baseman
- Has played recently on a platoon basis, starting against right-handed pitchers
- Played for three weeks during the fall of 2003 with the Canadian National Team
- Fluent in four languages - English, French, Slovenian and Italian
- Career high seven RBI and two homers in win over MSU (3/28)

Naccarata's LSU Career Highs

At-Bats: 6 (three occasions)
Hits: 4 vs. Tulane (5/31/03)
Runs Scored: 4 (twice)
Doubles: 2 (twice)
Triples: 1 (five occasions)
Home Runs: 2 vs. Miss. State (3/28/04)
RBI: 7 vs. Miss. State (3/28/04)
Stolen Bases: 1 (several occasions)



12
Ryan Patterson

Outfielder
5-11, 200, R-R, Jr., 1L
Rowlett, Texas (Texarkana College)

- A 2003 first-team all-SEC selection as a designated hitter
- Voted a 2004 first-team pre-season all-American by the National Collegiate Baseball Writers Association
- * Riding a nine-game hitting streak entering March 30 game at UNO
- 4-for-5 with a career-high five RBI (1 2B, two runs) vs. Texas State (Feb. 29)
- Six three-hit games, including 3-for-6 at UCF (Feb. 14) with one HR and three RBI; 3-for-6 at South Carolina (March 21) with one RBI and one run; 3-for-5 vs. Miss. State (March 27) with 1 2B, 1 HR and 3 RBI

Patterson's LSU Career Highs

At-Bats: 6 (five occasions)
Hits: 4 (three occasions)
Runs Scored: 4 vs. Mississippi State (5/24/03)
Doubles: 2 (three occasions)
Triples: 1 vs. Mississippi State (5/24/03)
Home Runs: 1 (several occasions)
RBI: 5 vs. Texas State (2/29/04)
Stolen Bases: 1 (several occasions)



27
Greg Smith

LH Pitcher
6-0, 190, L-L, So., 1L
Alexandria, La. (Alexandria HS)

- Talented hurler who has been a contributor as a middle and long reliever
- Has allowed just one run in 15.1 innings this season
- First career victory at South Carolina (March 19); worked two scoreless innings, allowing one hit with four strikeouts
- Worked 2.1 innings vs. Houston (March 6), allowing one run on two hits with season-high four strikeouts
- Has 10 strikeouts in his last six innings, allowing two hits, no runs, one walk

G. Smith's LSU Career Highs

Innings: 4.1 vs. Tulane (4/29/03)
Strikeouts: 5 at Mississippi State (5/2/03)
Hits Allowed: 8 at Long Beach State (2/28/03)
Runs: 8 at Long Beach State (2/28/03)
Earned Runs: 5 vs. Loyola-New Orleans (5/6/03)
Walks: 2 (two occasions)



43
Nick Stavinoha

DH/Catcher
6-1, 220, R-R, Jr., JC
Houston, Texas (San Jacinto JC)

- Had one of the most prolific fall intrasquad seasons in LSU history, batting a team-high .432 with six homers in 37 at-bats
- Played two seasons at San Jacinto Junior College in Houston where he recorded 37 career home runs and 132 RBI
- Posted an eight-game hitting streak in early March, batting .379 (11-for-29) during the streak with two doubles, one homer and seven RBI

Stavinoha's LSU Career Highs

At-Bats: 5 (several occasions)
Hits: 2 (several occasions)
Runs Scored: 2 (three occasions)
Doubles: 1 (several occasions)
Triples: none
Home Runs: 1 (four occasions)
RBI: 2 (three occasions)
Stolen Bases: 1 (twice)



16
Jon Zeringue

Outfielder
6-2, 205, R-R, Jr., 2L
Thibodaux, La. (E.D. White HS)

- Outstanding 2003 second-team all-SEC performer who was the third-round selection of the Chicago White Sox in the 2001 major league draft
- A 2004 Baseball America second-team pre-season all-American
- Batting average remained at .400 or better for 13 straight games (Feb. 28-March 21)
- * 3-for-5 with 2 homers, 2 RBI and 3 runs at South Carolina (March 21)
- Drove in a career-high five runs in victory over Miss. State (March 27)

Zeringue's LSU Career Highs

At-Bats: 6 at Vanderbilt (4/20/03)
Hits: 4 (twice)
Runs Scored: 4 vs. Baylor (6/8/03)
Doubles: 2 (three occasions)
Triples: 1 vs. Houston (3/7/04)
Home Runs: 2 (twice; most recently at South Carolina (3/21/04))
RBI: 5 vs. Miss. State (3/27/04)
Stolen Bases: 2 vs. SE Louisiana (4/23/03)

LSU Lists of Note

College World Series Championships

Southern California	12
LSU	5
Arizona State	5
Texas	5
Miami (Fla.)	4
Arizona	3
Cal State Fullerton	3
Minnesota	3
California	2
Michigan	2
Oklahoma	2
Stanford	2

NCAA Tournament Winning Percentage

LSU	.728 (99-37)
Southern California	.723 (167-64)
Arizona State	.692 (119-53)
Miami (Fla.)	.684 (147-68)
Stanford	.677 (113-54)
Texas	.664 (182-92)

CWS Winning Percentage

Southern California	74-26	.740
Minnesota	17-7	.708
LSU	29-15	.659
Arizona State	55-30	.647
Missouri	18-11	.621
Wichita State	16-11	.593
Stanford	38-27	.585
Texas	70-51	.579
Miami (Fla.)	44-32	.579
Cal State Fullerton	27-20	.574

CWS Appearances

Texas	30
Southern California	21
Miami (Fla.)	20
Oklahoma State	19
Arizona State	18
Florida State	18
Stanford	15
Arizona	14
LSU	12
Cal State Fullerton	12

Coaches' CWS Winning Percentage

Rod Dedeaux, Southern California	.789 (60-16)
Bobby Winkles, Arizona State	.762 (16-5)
Dick Siebert, Minnesota	.708 (17-7)
Skip Bertman, LSU	.690 (29-13)
Jerry Kindall, Arizona	.682 (15-7)
Augie Garrido, CS-Fullerton/Texas	.650 (26-14)
Jim Morris, Miami (Fla.)	.621 (18-11)
Toby Greene, Oklahoma State	.625 (15-9)
Hi Simmons, Missouri	.621 (18-11)
Jim Brock, Arizona State	.600 (36-24)
Cliff Gustafson, Texas	.595 (44-30)

Coaches' CWS Victories

Rod Dedeaux, Southern California	60
Cliff Gustafson, Texas	44
Jim Brock, Arizona State	36
Mark Marquess, Stanford	34
Skip Bertman, LSU	29
Ron Fraser, Miami (Fla.)	26
Augie Garrido, CS-Fullerton/Texas	26

Current Consecutive Regional Appearances

Miami (Fla.)	31 (1973-2003)
Florida State	26 (1978-2003)
Clemson	17 (1987-2003)
LSU	15 (1989-2003)
Cal State Fullerton	12 (1992-2003)
Stanford	10 (1994-2003)
Rice	9 (1995-2003)
South Alabama	9 (1995-2003)

2003 Major League Players

LSU	16
Southern California	14
UCLA	12
Cal State Fullerton	12
Stanford	12
Miami (Fla.)	11
Florida State	10
Georgia Tech	10
Pepperdine	9
Arizona State	8
Tennessee	8

Draft Selections (1994-2003)

Arizona State	83
Miami (Fla.)	74
Cal State Fullerton	72
Long Beach State	66
Stanford	64
LSU	63
Texas A&M	63
Southern California	62
Rice	61
Wichita State	58

LSU by the Numbers in 2004

Home	14-2
Away	7-2
Neutral Sites	0-0
Day	10-3
Night	11-1
On Jumbo Sports	4-1
On Cox Sports	0-0
On SEC-TV	0-0
Vs. SEC	2-1
Vs. SEC West	2-1
Vs. SEC East	2-1
Non-SEC Games	17-2
Vs. Louisiana opponents	7-0
Vs. Ranked opponents	1-0
Vs. Atlantic Sun	2-1
Vs. C-USA	3-1
Vs. Mid-Continent	1-0
Vs. Ohio Valley	3-0
Vs. Southland	7-0
Vs. Sun Belt	1-0
Vs. SWAC	0-0
Doubleheaders	0-0
Game 1 of weekend series	6-1
Game 2 of weekend series	5-2
Game 3 of weekend series	5-1
Sunday	5-1
Tuesday	5-0
Wednesday	0-0
Friday	6-1
Saturday	5-2
One-run games	2-1
Extra inning games	2-1
Shutouts	2-0
Games in which LSU scores first	12-2
Games in which opponent scores first	9-2
When LSU scores 10+	9-0
When LSU scores <5	2-1
When opponent scores 10+	0-2
When opponent scores <5	19-0
When LSU leads after 6 innings	18-0
When LSU trails after 6 innings	0-3
When tied after 6 innings	3-1
When LSU leads after 7 innings	20-0
When LSU trails after 7 innings	0-3
When tied after 7 innings	1-1
When LSU leads after 8 innings	19-0
When LSU trails after 8 innings	0-3
When tied after 8 innings	2-1
Vs. Right-handed starting pitcher	12-4
Vs. Left-handed starting pitcher	9-0
Starting Pitchers	20-2
Relievers	1-2
When LSU has 10+ hits	19-2
When LSU has <6 hits	0-0
When opponent has 10+ hits	6-4
When opponent has <6 hits	5-0
When LSU has more hits	17-0
When LSU has fewer hits	2-4
Equal hits	2-0
When LSU hits 3 or more home runs	5-0
When LSU hits no home runs	5-2
When opponent hits 3+ home runs	0-1
When opponent hits no home runs	13-1
Games won on final at-bat	2
Games lost on final at-bat	1
Come-from-behind wins	9
Losses when LSU led previously	2
Blown saves	0
Longest game	3:27 (at Central Florida, 2/15)
Shortest game(9 or more innings)	2:14 (at UL-Monroe, 3/9)

Smoke Laval

HEAD COACH • THIRD YEAR

Raymond "Smoke" Laval enhanced his reputation as one of the country's top college baseball coaches, as, in just his second season at the helm of the LSU program, he guided the 2003 Tigers to the Southeastern Conference title -- LSU's first since 1997 -- and a berth in the College World Series.

Laval, the 2003 SEC Coach of the Year, directed LSU to a 45-22-1 overall record and a 20-9-1 conference mark, as the Tigers finished No. 5 in the final Baseball America rankings.

The magnificent '03 campaign augmented the success Laval enjoyed in his inaugural season as LSU's coach, as he led the 2002 Tigers to a 44-22 overall mark, an appearance in the NCAA Super Regional and a No. 11 final national ranking.

Laval, who served seven seasons (1994-2000) as the head coach at the University of Louisiana-Monroe, assumed control of the LSU program from Bertman, who led the Tigers to five NCAA championships and 11 College World Series appearances during an 18-year (1984-2001) tenure. Laval worked as Bertman's top assistant coach for 10 seasons (1984-93), helping lead LSU to its first two NCAA titles in 1991 and 1993. During Laval's 10 years as assistant coach, LSU posted a 483-182-1 record, won five SEC titles, appeared in six College World Series and captured two national championships.

Laval was known at LSU as one of the nation's best recruiters and brightest assistant coaches, as the Tigers reached the College World Series in only the third season (1986) of the Bertman-Laval regime. LSU followed the '86 CWS appearance with Omaha berths in 1987, 1989 and 1990 before the Tigers claimed the school's first baseball national title in 1991. After LSU captured its second NCAA crown in 1993, Laval departed Baton Rouge to become the head coach at Northeast Louisiana (now Louisiana-Monroe).

During his assistant coaching tenure at LSU, Laval -- who worked as the Tigers' primary recruiter - tutored 24 players who would eventually reach the major leagues. Some of the major leaguers with whom Laval worked include all-stars Albert Belle and Paul Byrd and first-round pick Todd Walker.

Laval compiled a 241-159 (.603) mark as the head coach at ULM, guiding the Indians to NCAA Regional appearances in 1995, 1999 and 2000.

Laval began his coaching career in 1977 as an assistant at Jacksonville University before moving to Wolfson High School in Jacksonville as a baseball and football coach. He served as a graduate assistant at LSU in 1979 under former Tiger head coach Jack Lamabe before working two years as an assistant at Gulf Coast Community College in Panama City, Fla.

Laval served as an assistant coach at Florida for two seasons (1982-83) before returning to LSU to work under Bertman.

Laval holds a bachelor's degree (1977) from Jacksonville in physical education and a master's degree (1979) from LSU in administration. The McDonald, Pa., native played two seasons at Gulf Coast Community College, where he lettered as a catcher. He completed his playing career at Jacksonville, where he led the ninth-ranked Dolphins in hitting at the 1976 NCAA South Regional.

Laval and his wife, Pam, are the parents of two children, Brandon and Jamie.

Laval Year-By-Year

Year	W-L	School	Highlights
1994	20-33	UL-Monroe	Defeated Three NCAA Tournament Teams
1995	37-20	UL-Monroe	SLC Tournament Champions; NCAA Regional Participants
1996	41-19	UL-Monroe	School-Record 41 Wins; SLC Louisiana Division Champions
1997	33-21	UL-Monroe	Became Fourth Coach in ULM History To Record 100 Wins
1998	33-22	UL-Monroe	Led SLC In Hitting For Third Straight Season
1999	36-22	UL-Monroe	SLC Champions; NCAA Regional Participants
2000	41-22	UL-Monroe	SLC Champions; NCAA Regional Participants
2002	44-22	LSU	NCAA Regional Champions; NCAA Super Regional Participants
2003	45-22-1	LSU	SEC Champions; College World Series Participants
2004	21-4	LSU	

Career Record (10th year): 351-207-1

LSU Record (3rd year): 110-48-1

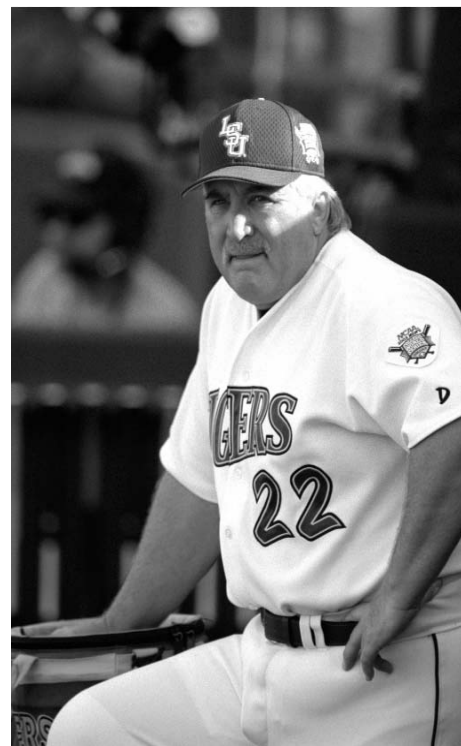
COACHING HONORS

1995 Louisiana Sportswriters Association Coach of the Year

1999 Southland Conference Coach of the Year

2002 Louisiana Sportswriters Association Coach of the Year

2003 SEC Coach of the Year; Louisiana Sportswriters Association Coach of the Year



The Laval File

Full Name: Raymond Peter Laval

Born: December 20, 1955

Hometown: McDonald, Pa.

Wife: Pam Lewis of Reserve, La.

Children: Jamie and Brandon

Coaching Experience

1977	Assistant Coach	Jacksonville
1978	Assistant Coach	Wolfson HS (Jacksonville, Fla.)
1979	Graduate Assistant	LSU
1980-81	Assistant Coach	Gulf Coast CC
1982-83	Assistant Coach	Florida
1984-93	Assistant Coach	LSU
1994-2000	Head Coach	UL-Monroe
2001	Administrative Asst.	LSU
2002-	Head Coach	LSU

Education

High School: South Fayette(McDonald, Pa.), 1973

College: Jacksonville, 1977 (physical education)

Masters: LSU, 1979 (administration)

Playing Experience

1970-73: Catcher, South Fayette High School

1974-75: Catcher, Gulf Coast CC

1976-77: Catcher, Jacksonville University

The Nickname "Smoke"

As a native of Western Pennsylvania, Raymond Peter Laval grew up as a Pittsburgh Pirates fan. He received the name "Smoke" in the late 1970s from his Gulf Coast Community College teammates, who derived the moniker from Smokey Burgess, a catcher for the Pirates in the 1960s.

Media Services

Interview Opportunities

Head Coach Smoke Laval

Coach Laval is available for phone interviews on weekday mornings (9 a.m. -Noon) during the season. Please coordinate all requests for personal interviews with Coach Laval through his office. Appointments and interviews may be arranged through Virginia Robertson at (225) 578-4148. **Coach Laval will talk to reporters approximately 10 minutes after the end of a game in the LSU dugout.**

Players

Media members are invited to attend LSU baseball practice sessions. Players are available for interviews before each practice at approximately 1 p.m. in Alex Box Stadium. Requests for live player interviews on the field prior to a game should be made through Bill Franques in the Sports Information Office.

Post-game player interviews are conducted in front of the LSU dugout at the conclusion of a brief team meeting on the field.

Mailing Address

LSU Sports Information
P.O. Box 25095
Baton Rouge, LA 70894-5095

Overnight Mail Address

Room 501, LSU Athletics Admin. Bldg.
N. Stadium Dr. at Nicholson Dr.
Baton Rouge, LA 70894-5095

Phone Directory

Press Box: 225-578-4149
Sports Information: 225-578-8226
Fax: 225-578-1861
Baseball Office: 225-578-4148
Fax: 225-578-4066

Baseball Contact E-mail Address

wfranqu@lsu.edu

Who to Contact

Sports Information Office

(225) 578-8226

Baseball Contact

Bill Franques - wfranqu@lsu.edu

Asst. Contact

Bill Martin - wmarti4@lsu.edu

LSU Television

(225) 578-1797

Asst. AD/Television

Kevin Wagner - jwagne2@lsu.edu

Manager/Television

John Schiebe - jschiebe@lsu.edu

LSU Radio

(225) 578-1882

Asst. AD/Radio

Jim Hawthorne - Isuradio@lsu.edu

On the Internet

www.LSUports.net

The Official Website of LSU Athletics is home to all the baseball information you need.

Schedules, results, rosters, bios, statistics and game notes can be found and are always up to date.

http://media.lsuports.net

Media can now access images for all LSU athletic teams, including action shots, heads shots, logos, etc. To gain access to the high-resolution pictures, email Bill Franques. You will be assigned a login and password that will enable you to retrieve pictures. This service is for the media use only.

LSU Electronic Media

Radio

The LSU Sports Radio Network will distribute all LSU Baseball games by satellite to 25 radio affiliates. WDGL-FM (98.1) Radio in Baton Rouge serves as the flagship station for the LSU Sports Network. Jim Hawthorne, the "Voice of the Tigers" for all LSU sports, is in his 21st season of calling baseball play-by-play action. He will be joined on the broadcasts by Charles Hanagriff and LSU baseball publicist Bill Franques. Selected LSU Sports Network stations will also air "Tiger Sportsline with Smoke Laval" each Monday from 7-8 p.m., beginning on March 29. The show airs live from Superior Grill on Government Street in Baton Rouge.

Television

Inside LSU Baseball is a weekly program featuring LSU head coach Smoke Laval. The first installment of the 2004 season will air March 21, and the show will air weekly through May 23. The show features game highlights, player profiles and in-depth stories on college baseball's No. 1 program. Inside LSU Baseball is produced by the LSU Electronic Media Department – Kevin Wagner, Executive Producer; John Schiebe, Associate Producer. Inside LSU Baseball Affiliates include WBRZ Channel 2 in Baton Rouge and Cox Sports Television throughout the state of Louisiana.

Bill Franques
wfranqu@lsu.edu

Week 8: March 29-April 4

Bill Martin
wmarti4@lsu.edu

MONDAY	29	TUESDAY	30	WEDNESDAY	31	THURSDAY	1	FRIDAY	2	SATURDAY	3	SUNDAY	4
		at New Orleans 6:30 p.m. Maestri Field New Orleans, La. Radio: LSU Sports Network TV: Jumbo Sports						at Auburn 6:30 p.m. Hitchcock Field at Plainsman Park Auburn, Ala. Radio: LSU Sports Network TV: None		at Auburn 3 p.m. Hitchcock Field at Plainsman Park Auburn, Ala. Radio: LSU Sports Network TV: None		at Auburn 1:30 p.m. Hitchcock Field at Plainsman Park Auburn, Ala. Radio: LSU Sports Network TV: Jumbo Sports	

2004 LSU Baseball
Overall Statistics for LSU (as of Mar 29, 2004)
(All games Sorted by Batting avg)

Record: 21-4 Home: 14-2 Away: 7-2 SEC: 4-2

Player	AVG	GP-GS	AB	R	H	2B	3B	HR	RBI	TB	SLG%	BB	HBP	SO	GDP	OB%	SF	SH	SB-ATT	PO	A	E	FLD%
1 J.C. Holt.....	.422	25-25	102	32	43	9	2	3	20	65	.637	11	2	16	1	.483	1	3	6-6	58	0	0	1.000
16 Jon Zeringue.....	.394	25-25	94	28	37	12	1	7	24	72	.766	9	2	16	0	.449	2	0	1-2	43	1	0	1.000
3 Blake Gill.....	.343	25-24	99	20	34	6	2	0	15	44	.444	9	0	8	2	.394	1	0	1-1	48	60	5	.956
14 Matt Liuzza.....	.340	24-24	94	17	32	7	0	6	23	57	.606	7	0	15	2	.379	2	2	0-0	143	15	0	1.000
12 Ryan Patterson...	.327	25-25	113	26	37	10	0	4	27	59	.522	5	1	19	3	.358	1	0	1-1	44	3	1	.979
43 Nick Stavinoha...	.320	24-24	97	16	31	5	0	4	18	48	.495	2	1	13	2	.330	3	0	2-2	0	0	0	.000
21 Clay Harris.....	.287	25-25	94	19	27	2	3	1	13	38	.404	17	2	10	1	.400	2	0	0-0	142	29	3	.983
7 Ivan Naccarata...	.254	21-14	59	15	15	2	0	3	17	26	.441	11	1	10	1	.370	2	0	1-2	9	34	4	.915

9 Dustin Weaver....	.500	10-2	14	3	7	1	0	1	7	11	.786	1	1	0	0	.529	1	0	0-0	27	1	0	1.000
25 Will Harris.....	.436	16-11	39	12	17	2	0	2	13	25	.641	6	1	5	1	.522	0	0	0-1	86	5	1	.989
10 Ty Jensen.....	.400	10-0	5	1	2	0	0	0	3	2	.400	0	1	1	0	.500	0	0	0-0	8	0	0	1.000
34 Matt Horwath.....	.326	14-14	43	10	14	4	0	1	9	21	.488	10	1	12	0	.463	0	1	0-0	16	36	4	.929
2 Derek Hebert.....	.314	17-11	51	14	16	4	0	1	5	23	.451	2	0	10	2	.333	1	0	0-0	26	41	3	.957
30 Bobby DiLiberto..	.273	8-1	11	2	3	0	0	1	4	6	.545	0	0	1	1	.273	0	0	0-0	3	7	1	.909
38 Brad Bass.....	.250	4-0	4	0	1	0	0	0	2	1	.250	0	0	0	1	.250	0	0	0-0	3	0	0	1.000
32 Rhett Buteau.....	.000	7-0	3	2	0	0	0	0	1	0	.000	4	0	1	0	.571	0	0	0-0	1	0	0	1.000
52 Will Davis.....	.000	1-0	1	0	0	0	0	0	0	0	.000	0	0	1	0	.000	0	0	0-0	0	0	0	.000
Totals.....	.342	25-25	923	217	316	64	8	34	201	498	.540	94	13	138	17	.404	16	6	12-15	670	268	26	.973
Opponents.....	.244	25-25	850	81	207	37	3	13	71	289	.340	74	16	173	23	.315	3	6	14-22	633	236	40	.956

LOB - Team (203), Opp (198). DPs turned - Team (27), Opp (22). CI - Team (0), Opp (1). IBB - Team (0), Opp (2). Picked off - Patterson 2, Gill 1, Holt 1.

(All games Sorted by Earned run avg)

Player	ERA	W-L	APP	GS	CG	SHO/CBO	SV	IP	H	R	ER	BB	SO	2B	3B	HR	AB	B/Avg	WP	HBP	BK	SFA	SHA
13 Clay Dirks.....	1.64	5-0	7	6	1	1/1	1	38.1	25	8	7	8	37	10	0	1	140	.179	1	4	1	0	1
35 Justin Meier.....	2.51	4-1	7	7	0	0/0	0	46.2	46	17	13	13	33	10	0	2	181	.254	3	5	0	1	1
46 Lane Mestepey....	3.24	3-1	8	6	0	0/0	0	33.1	41	15	12	12	17	3	0	4	130	.315	1	1	0	0	2
41 Nate Bumstead....	4.15	4-0	5	4	0	0/0	0	30.1	35	15	14	9	19	6	1	3	124	.282	3	1	1	0	0

27 Greg Smith.....	0.59	1-0	9	0	0	0/1	0	15.1	8	1	1	4	21	1	0	1	55	.145	1	1	0	0	0
33 Jason Determann..	1.72	2-0	8	1	0	0/1	1	15.2	11	3	3	2	10	0	0	1	55	.200	1	0	3	1	0
29 Jordan Faircloth.	2.12	0-2	9	0	0	0/0	1	17.0	13	4	4	6	12	2	0	1	57	.228	0	3	0	0	0
25 Will Harris.....	3.00	0-0	3	0	0	0/0	0	3.0	4	1	1	3	2	1	0	0	13	.308	0	1	0	0	0
28 Michael Bonura...	4.34	2-0	7	1	0	0/1	0	18.2	18	12	9	15	17	1	1	0	71	.254	1	0	1	1	2
6 Collin Smith.....	9.00	0-0	4	0	0	0/0	0	5.0	6	5	5	2	5	3	1	0	24	.250	1	0	0	0	0
Totals.....	2.74	21-4	25	25	1	2/1	3	223.1	207	81	68	74	173	37	3	13	850	.244	12	16	6	3	6
Opponents.....	7.76	4-21	25	25	0	0/0	1	211.0	316	217	182	94	138	64	8	34	923	.342	22	13	3	16	6

PB - Team (5), Liuzza 4, Weaver 1, Opp (6). Pickoffs - Team (3), Mestepey 2, Determann 1, Opp (4). SBA/ATT - Liuzza (13-21), Meier (2-5), Faircloth (2-4), Bumstead (3-3), Mestepey (3-3), Dirks (1-2), Bonura (1-2), Smith, C. (1-1), Weaver (1-1), Harris, W. (1-1), Determann (0-1).

2004 LSU Baseball

Overall Statistics for LSU (as of Mar 29, 2004)

(All games Sorted by Fielding pct)

Player	C	PO	A	E	FLD%	DPs	SBA	CSB	SBA%	PB	CI
14 Matt Liuzza.....	158	143	15	0	1.000	2	13	8	.619	4	0
1 J.C. Holt.....	58	58	0	0	1.000	0	0	0	---	0	0
16 Jon Zeringue.....	44	43	1	0	1.000	0	0	0	---	0	0
9 Dustin Weaver....	28	27	1	0	1.000	0	1	0	1.000	1	0
29 Jordan Faircloth.	11	3	8	0	1.000	1	2	2	.500	0	0
10 Ty Jensen.....	8	8	0	0	1.000	0	0	0	---	0	0
41 Nate Bumstead....	6	3	3	0	1.000	0	3	0	1.000	0	0
33 Jason Determann..	5	0	5	0	1.000	0	0	1	.000	0	0
38 Brad Bass.....	3	3	0	0	1.000	0	0	0	---	0	0
27 Greg Smith.....	2	1	1	0	1.000	0	0	0	---	0	0
32 Rhett Buteau.....	1	1	0	0	1.000	0	0	0	---	0	0
25 Will Harris.....	92	86	5	1	.989	14	1	0	1.000	0	0
21 Clay Harris.....	174	142	29	3	.983	16	0	0	---	0	0
12 Ryan Patterson...	48	44	3	1	.979	1	0	0	---	0	0
2 Derek Hebert.....	70	26	41	3	.957	7	0	0	---	0	0
3 Blake Gill.....	113	48	60	5	.956	19	0	0	---	0	0
34 Matt Horwath.....	56	16	36	4	.929	7	0	0	---	0	0
7 Ivan Naccarata...	47	9	34	4	.915	2	0	0	---	0	0
30 Bobby DiLiberto..	11	3	7	1	.909	0	0	0	---	0	0
35 Justin Meier.....	10	2	7	1	.900	0	2	3	.400	0	0
46 Lane Mestepey....	10	2	7	1	.900	0	3	0	1.000	0	0
13 Clay Dirks.....	5	0	4	1	.800	0	1	1	.500	0	0
28 Michael Bonura...	4	2	1	1	.750	0	1	1	.500	0	0
43 Nick Stavinoha...	0	0	0	0	.000	0	0	0	---	0	0
52 Will Davis.....	0	0	0	0	.000	0	0	0	---	0	0
6 Collin Smith.....	0	0	0	0	.000	0	1	0	1.000	0	0
Totals.....	964	670	268	26	.973	27	14	8	.636	5	0
Opponents.....	909	633	236	40	.956	22	12	3	.800	6	1

2004 LSU Baseball

Game Results for LSU (as of Mar 29, 2004)

(All games)

Game date	Opposing team	Score	r	h	e/	r	h	e	Inns	Overall	SEC	Pitcher of record	Attend	Time	
-----	-----	----	-----/-----			----	-----	-----	-----	-----	-----	-----	-----	-----	-----
Feb 13, 2004	at UCF	W 4-3	4	7	0/	3	7	3	(10)	1- 0- 0	0- 0- 0	Determann (W 1-0)	1922	3:15	
Feb 14, 2004	at UCF	W 17-4	17	19	1/	4	7	2	9	2- 0- 0	0- 0- 0	Mestepey (W 1-0)	1642	3:20	
Feb 15, 2004	at UCF	5-6 L	5	8	1/	6	10	1	(10)	2- 1- 0	0- 0- 0	Faircloth (L 0-1)	1575	3:27	
Feb 17, 2004	Louisiana-Monroe	W 7-1	7	11	1/	1	6	2	9	3- 1- 0	0- 0- 0	Bonura (W 1-0)	7643	2:46	
Feb 20, 2004	Jacksonville State	W 6-1	6	10	0/	1	6	4	9	4- 1- 0	0- 0- 0	Meier (W 1-0)	7448	2:41	
Feb 21, 2004	Jacksonville State	W 14-2	14	14	1/	2	8	3	9	5- 1- 0	0- 0- 0	Mestepey (W 2-0)	7528	2:44	
Feb 22, 2004	Jacksonville State	W 19-1	19	20	3/	1	4	2	7	6- 1- 0	0- 0- 0	Dirks (W 1-0)	7494	2:30	
Feb 27, 2004	Texas State	W 10-1	10	15	2/	1	6	2	9	7- 1- 0	0- 0- 0	Meier (W 2-0)	7748	2:35	
Feb 28, 2004	Texas State	W 2-1	2	6	1/	1	8	1	9	8- 1- 0	0- 0- 0	Determann (W 2-0)	8360	2:18	
Feb 29, 2004	Texas State	W 13-2	13	16	0/	2	7	2	9	9- 1- 0	0- 0- 0	Bumstead (W 1-0)	8103	2:32	
Mar 02, 2004	at #8 Tulane	W 6-0	6	14	0/	0	4	0	9	10- 1- 0	0- 0- 0	Dirks (W 2-0)	10916	2:45	
Mar 05, 2004	Houston	W 9-3	9	14	0/	3	12	3	9	11- 1- 0	0- 0- 0	Meier (W 3-0)	7698	3:23	
Mar 06, 2004	Houston	5-10 L	5	13	4/	10	14	0	9	11- 2- 0	0- 0- 0	Mestepey (L 2-1)	8683	3:01	
Mar 07, 2004	Houston	W 8-2	8	15	0/	2	10	0	9	12- 2- 0	0- 0- 0	Bumstead (W 2-0)	8177	2:33	
Mar 09, 2004	at Louisiana-Monroe	W 6-1	6	12	0/	1	4	2	9	13- 2- 0	0- 0- 0	Dirks (W 3-0)	3651	2:14	
Mar 12, 2004	Southeastern La.	W 7-1	7	12	1/	1	6	1	9	14- 2- 0	0- 0- 0	Meier (W 4-0)	8308	2:20	
Mar 13, 2004	Southeastern La.	W 5-1	5	11	1/	1	12	3	9	15- 2- 0	0- 0- 0	Mestepey (W 3-1)	7978	2:46	
Mar 16, 2004	New Orleans	W 14-0	14	12	0/	0	3	2	7	16- 2- 0	0- 0- 0	Dirks (W 4-0)	7798	2:09	
*Mar 19, 2004	at #3 South Carolina	W 6-3	6	12	2/	3	8	0	(11)	17- 2- 0	1- 0- 0	Smith, G. (W 1-0)	5481	2:56	
*Mar 20, 2004	at #3 South Carolina	5-12 L	5	10	1/	12	11	2	9	17- 3- 0	1- 1- 0	Faircloth (L 0-2)	5908	2:25	
*Mar 21, 2004	at #3 South Carolina	W 12-7	12	18	1/	7	9	0	9	18- 3- 0	2- 1- 0	Bumstead (W 3-0)	5982	2:49	
Mar 23, 2004	at Centenary	W 9-3	9	12	0/	3	11	2	9	19- 3- 0	2- 1- 0	Bonura (W 2-0)	4178	2:40	
*Mar 26, 2004	#24 Mississippi Stat	3-7 L	3	6	1/	7	14	1	9	19- 4- 0	2- 2- 0	Meier (L 4-1)	8521	2:42	
*Mar 27, 2004	#24 Mississippi Stat	W 11-6	11	13	2/	6	9	1	9	20- 4- 0	3- 2- 0	Dirks (W 5-0)	8289	2:32	
*Mar 28, 2004	#24 Mississippi Stat	W 14-3	14	16	3/	3	11	1	9	21- 4- 0	4- 2- 0	Bumstead (W 4-0)	8040	2:20	

* = Conference game
 () extra inning game

2004 LSU Baseball
 Games Summary for LSU (as of Mar 29, 2004)
 (All games)

Inning-by-inning summary:

	1	2	3	4	5	6	7	8	9	EX	Total
LSU	23	13	29	39	30	18	39	14	8	4	217
Opponents	7	5	15	7	11	7	13	7	8	1	81

Win-loss summary:

	W	L	T	Pct
Total	21	4	0	.840
Conference	4	2	0	.667
Non-Conf	17	2	0	.895
Home	14	2	0	.875
Away	7	2	0	.778
Neutral	0	0	0	.000
Day	10	3	0	.769
Night	11	1	0	.917
vs Left	9	0	0	1.000
vs Right	12	4	0	.750
1-Run games	2	1	0	.667
2-Run games	0	0	0	.000
5+Run games	17	2	0	.895
Extra inns	2	1	0	.667
Shutouts	2	0	0	1.000

General summary:

Current winning streak : 2
 Longest winning streak : 9
 Longest losing streak : 1

Home attendance : 127816 (16 dates avg = 7988)
 Away attendance : 41255 (9 dates avg = 4583)
 Total attendance: 169071 (25 dates avg = 6762)

2004 LSU Baseball
Team Game-by-Game for LSU (as of Mar 29, 2004)
Batting (All games)

Date	Opponent	AB	R	H	RBI	2B	3B	HR	BB	IBB	SB	CS	HBP	SAC	SF	GDP	K	PO	A	E	Avg
Feb 13, 2004	at UCF	37	4	7	3	1	0	2	6	0	0	2	0	0	0	0	8	30	11	0	.189
Feb 14, 2004	at UCF	45	17	19	16	1	0	5	9	0	1	0	2	1	0	0	8	27	16	1	.317
Feb 15, 2004	at UCF	38	5	8	5	1	1	0	5	0	0	0	2	0	0	0	9	28	12	1	.283
Feb 17, 2004	Louisiana-Monroe	35	7	11	6	4	1	0	6	0	0	0	1	0	1	0	4	27	11	1	.290
Feb 20, 2004	Jacksonville State	37	6	10	5	0	0	1	4	0	2	0	0	0	0	0	13	27	8	0	.286
Feb 21, 2004	Jacksonville State	36	14	14	12	2	1	0	5	0	0	0	1	0	0	2	2	27	15	1	.303
Feb 22, 2004	Jacksonville State	39	19	20	17	4	0	0	4	0	1	0	1	0	0	0	6	21	6	3	.333
Feb 27, 2004	Texas State	40	10	15	9	4	0	3	0	0	0	0	1	0	0	0	6	27	7	2	.339
Feb 28, 2004	Texas State	29	2	6	2	2	0	1	1	0	0	0	0	0	0	2	2	27	16	1	.327
Feb 29, 2004	Texas State	36	13	16	12	3	0	1	5	0	1	0	1	1	1	3	3	27	10	0	.339
Mar 02, 2004	at Tulane	41	6	14	6	1	0	1	1	0	1	0	0	0	0	0	7	27	11	0	.339
Mar 05, 2004	Houston	36	9	14	8	2	0	0	7	0	0	0	0	0	2	1	2	27	15	0	.343
Mar 06, 2004	Houston	38	5	13	5	3	0	0	3	0	0	0	0	0	0	2	6	27	8	4	.343
Mar 07, 2004	Houston	37	8	15	6	3	1	1	4	0	1	0	0	0	0	2	2	27	8	0	.347
Mar 09, 2004	at Louisiana-Monroe	38	6	12	5	5	1	0	0	0	0	0	0	1	0	0	9	27	7	0	.345
Mar 12, 2004	Southeastern La.	35	7	12	7	1	1	2	2	0	0	0	0	0	2	0	2	27	9	1	.345
Mar 13, 2004	Southeastern La.	36	5	11	5	3	0	1	4	0	2	1	0	0	0	0	8	27	13	1	.343
Mar 16, 2004	New Orleans	28	14	12	14	4	2	1	7	0	0	0	0	0	3	0	1	21	4	0	.346
Mar 19, 2004	at *South Carolina	42	6	12	6	2	0	1	2	0	0	0	2	2	1	0	11	33	8	2	.343
Mar 20, 2004	at *South Carolina	34	5	10	4	3	0	2	1	0	0	0	0	0	1	1	4	24	16	1	.341
Mar 21, 2004	at *South Carolina	43	12	18	12	4	0	4	5	0	0	0	0	0	1	1	8	27	8	1	.345
Mar 23, 2004	at Centenary	38	9	12	8	5	0	2	1	0	1	0	1	1	1	0	7	27	13	0	.344
Mar 26, 2004	*Mississippi State	32	3	6	3	1	0	1	5	0	0	0	0	0	1	1	8	27	16	1	.338
Mar 27, 2004	*Mississippi State	35	11	13	11	3	0	3	3	0	2	0	1	0	0	2	2	27	6	2	.339
Mar 28, 2004	*Mississippi State	38	14	16	14	2	0	2	4	0	0	0	0	0	2	0	0	27	14	3	.342
Totals		923	217	316	201	64	8	34	94	0	12	3	13	6	16	17	138	670	268	26	.342

2004 LSU Baseball
 Team Game-by-Game for LSU (as of Mar 29, 2004)
 Pitching (All games)

Date	Opponent	IP	H	R	ER	BB	SO	2B	3B	HR	WP	BK	HBP	DP	IBB	Score	W-L	SV	ERA
Feb 13, 2004	at UCF	10.0	7	3	3	3	7	1	0	1	0	1	0	0	0	4-3	1-0	0	2.70
Feb 14, 2004	at UCF	9.0	7	4	3	5	5	0	1	0	1	0	1	1	0	17-4	2-0	0	2.84
Feb 15, 2004	at UCF	9.1	10	6	6	8	8	5	0	1	1	1	2	0	2	5-6	2-1	0	3.81
Feb 17, 2004	Louisiana-Monroe	9.0	6	1	1	6	7	1	0	0	0	1	1	0	0	7-1	3-1	0	3.13
Feb 20, 2004	Jacksonville State	9.0	6	1	1	1	11	0	0	0	0	0	0	0	0	6-1	4-1	1	2.72
Feb 21, 2004	Jacksonville State	9.0	8	2	2	2	6	3	0	1	0	0	0	2	0	14-2	5-1	1	2.60
Feb 22, 2004	Jacksonville State	7.0	4	1	0	0	7	2	0	0	0	1	0	0	0	19-1	6-1	1	2.31
Feb 27, 2004	Texas State	9.0	6	1	1	3	4	1	0	0	0	0	1	1	0	10-1	7-1	1	2.14
Feb 28, 2004	Texas State	9.0	8	1	1	2	5	0	0	0	0	0	0	1	0	2-1	8-1	1	2.02
Feb 29, 2004	Texas State	9.0	7	2	2	2	6	0	0	1	1	0	1	0	0	13-2	9-1	1	2.01
Mar 02, 2004	at Tulane	9.0	4	0	0	1	7	1	0	0	1	0	0	1	0	6-0	10-1	1	1.83
Mar 05, 2004	Houston	9.0	12	3	3	3	4	2	0	0	2	0	1	1	0	9-3	11-1	1	1.93
Mar 06, 2004	Houston	9.0	14	10	5	4	11	1	0	3	1	0	1	0	0	5-10	11-2	1	2.17
Mar 07, 2004	Houston	9.0	10	2	2	2	7	1	0	0	0	0	0	1	0	8-2	12-2	1	2.15
Mar 09, 2004	at Louisiana-Monroe	9.0	4	1	1	1	10	0	0	0	0	0	1	1	0	6-1	13-2	1	2.08
Mar 12, 2004	Southeastern La.	9.0	6	1	1	3	3	2	0	0	0	0	1	2	0	7-1	14-2	1	2.01
Mar 13, 2004	Southeastern La.	9.0	12	1	1	4	5	1	0	0	0	0	1	4	0	5-1	15-2	2	1.95
Mar 16, 2004	New Orleans	7.0	3	0	0	1	10	1	0	0	1	0	0	1	0	14-0	16-2	2	1.86
Mar 19, 2004	at *South Carolina	11.0	8	3	3	4	12	2	0	1	1	0	2	0	0	6-3	17-2	2	1.90
Mar 20, 2004	at *South Carolina	8.0	11	12	11	7	7	1	0	2	1	0	0	1	0	5-12	17-3	2	2.37
Mar 21, 2004	at *South Carolina	9.0	9	7	7	6	7	3	1	1	0	0	0	1	0	12-7	18-3	3	2.59
Mar 23, 2004	at Centenary	9.0	11	3	3	0	7	1	0	1	0	2	1	0	0	9-3	19-3	3	2.61
Mar 26, 2004	*Mississippi State	9.0	14	7	3	4	6	4	0	0	0	0	0	3	0	3-7	19-4	3	2.63
Mar 27, 2004	*Mississippi State	9.0	9	6	6	2	9	3	1	0	1	0	2	0	0	11-6	20-4	3	2.77
Mar 28, 2004	*Mississippi State	9.0	11	3	2	0	2	1	0	1	1	0	0	2	0	14-3	21-4	3	2.74
Totals		223.1	207	81	68	74	173	37	3	13	12	6	16	23	2	217-81	21-4	3	2.74

* = SEC game

2004 LSU Baseball
 Miscellaneous Stats for LSU (as of Mar 29, 2004)
 (All games)

MULTIPLE HIT GAMES		2	3	4	5+	Tot
1	J.C. Holt.....	6	6	1	-	13
16	Jon Zeringue.....	8	5	-	-	13
12	Ryan Patterson...	3	6	1	-	10
43	Nick Stavinoha...	9	-	-	-	9
14	Matt Liuzza.....	7	2	-	-	9
3	Blake Gill.....	5	3	1	-	9
21	Clay Harris.....	7	-	-	-	7
2	Derek Hebert.....	5	-	-	-	5
25	Will Harris.....	3	1	1	-	5
7	Ivan Naccarata...	3	-	-	-	3
34	Matt Horwath.....	2	1	-	-	3
9	Dustin Weaver....	2	-	-	-	2

TEAM		60	24	4	0	88

MULTIPLE RBI GAMES		2	3	4	5+	Tot
12	Ryan Patterson...	4	3	-	1	8
16	Jon Zeringue.....	4	1	-	1	6
1	J.C. Holt.....	5	1	-	-	6
14	Matt Liuzza.....	5	-	1	-	6
25	Will Harris.....	3	1	1	-	5
9	Dustin Weaver....	3	-	-	-	3
3	Blake Gill.....	3	-	-	-	3
43	Nick Stavinoha...	3	-	-	-	3
7	Ivan Naccarata...	1	1	-	1	3
21	Clay Harris.....	1	-	1	-	2
34	Matt Horwath.....	2	-	-	-	2
10	Ty Jensen.....	1	-	-	-	1
30	Bobby DiLiberto..	-	1	-	-	1
38	Brad Bass.....	1	-	-	-	1

TEAM		36	8	3	3	50

HITTING STREAKS		Longest Current	
14	Matt Liuzza.....	14	2
1	J.C. Holt.....	10	1
12	Ryan Patterson...	9	9
21	Clay Harris.....	8	7
43	Nick Stavinoha...	8	6
34	Matt Horwath.....	8	8
16	Jon Zeringue.....	7	2
3	Blake Gill.....	6	3
25	Will Harris.....	6	1
2	Derek Hebert.....	5	1
7	Ivan Naccarata...	4	3
9	Dustin Weaver....	3	3
10	Ty Jensen.....	2	-
30	Bobby DiLiberto..	1	-
38	Brad Bass.....	1	-

2004 LSU Baseball
 Miscellaneous Stats for LSU (as of Mar 29, 2004)
 (All games)

STARTING LINEUP BY POSITION (Team W-L record when starter)

PITCHER:		
35 Justin Meier.....	7	(6-1)
13 Clay Dirks.....	6	(5-1)
46 Lane Mestepey....	6	(4-2)
41 Nate Bumstead....	4	(4-0)
33 Jason Determann..	1	(1-0)
28 Michael Bonura...	1	(1-0)
CATCHER:		
14 Matt Liuzza.....	23	(19-4)
9 Dustin Weaver....	2	(2-0)
FIRST BASE:		
21 Clay Harris.....	14	(11-3)
25 Will Harris.....	11	(10-1)
SECOND BASE:		
3 Blake Gill.....	24	(20-4)
30 Bobby DiLiberto..	1	(1-0)
THIRD BASE:		
7 Ivan Naccarata...	14	(11-3)
21 Clay Harris.....	11	(10-1)
SHORTSTOP:		
34 Matt Horwath.....	14	(12-2)
2 Derek Hebert.....	11	(9-2)
LEFT FIELD:		
12 Ryan Patterson...	25	(21-4)
CENTER FIELD:		
1 J.C. Holt.....	25	(21-4)
RIGHT FIELD:		
16 Jon Zeringue.....	25	(21-4)
DESIGNATED HITTER:		
43 Nick Stavinoha...	24	(20-4)
14 Matt Liuzza.....	1	(1-0)

2004 LSU Baseball
 Miscellaneous Stats for LSU (as of Mar 29, 2004)
 (All games)

STARTING LINEUP BY LINEUP SPOT (Team W-L record when starter)

LEADOFF:

1 J.C. Holt.....	17	(13-4)
12 Ryan Patterson...	4	(4-0)
34 Matt Horwath.....	4	(4-0)

2ND SPOT:

12 Ryan Patterson...	19	(15-4)
1 J.C. Holt.....	6	(6-0)

3RD SPOT:

3 Blake Gill.....	16	(12-4)
14 Matt Liuzza.....	5	(5-0)
1 J.C. Holt.....	2	(2-0)
12 Ryan Patterson...	1	(1-0)
7 Ivan Naccarata...	1	(1-0)

CLEANUP:

43 Nick Stavinocha...	12	(11-1)
14 Matt Liuzza.....	10	(7-3)
21 Clay Harris.....	3	(3-0)

5TH SPOT:

21 Clay Harris.....	16	(14-2)
43 Nick Stavinocha...	6	(4-2)
16 Jon Zeringue.....	3	(3-0)

6TH SPOT:

16 Jon Zeringue.....	10	(8-2)
14 Matt Liuzza.....	6	(6-0)
43 Nick Stavinocha...	6	(5-1)
21 Clay Harris.....	2	(1-1)
25 Will Harris.....	1	(1-0)

7TH SPOT:

7 Ivan Naccarata...	8	(6-2)
16 Jon Zeringue.....	5	(4-1)
3 Blake Gill.....	5	(5-0)
21 Clay Harris.....	4	(3-1)
30 Bobby DiLiberto..	1	(1-0)
25 Will Harris.....	1	(1-0)
12 Ryan Patterson...	1	(1-0)

8TH SPOT:

16 Jon Zeringue.....	7	(6-1)
25 Will Harris.....	5	(4-1)
7 Ivan Naccarata...	4	(3-1)
14 Matt Liuzza.....	3	(2-1)
3 Blake Gill.....	3	(3-0)
9 Dustin Weaver....	2	(2-0)
2 Derek Hebert.....	1	(1-0)

9TH SPOT:

2 Derek Hebert.....	10	(8-2)
34 Matt Horwath.....	10	(8-2)
25 Will Harris.....	4	(4-0)
7 Ivan Naccarata...	1	(1-0)

2004 LSU Baseball
Season Game Highs for LSU (as of Mar 29, 2004)
(All games)
TEAM GAME HIGHS

Batting

At bats: 45 - vs UCF (Feb 14, 2004)
Runs scored: 19 - vs Jacksonville State (Feb 22, 2004)
Hits: 20 - vs Jacksonville State (Feb 22, 2004)
RBIs: 17 - vs Jacksonville State (Feb 22, 2004)
Doubles: 5 - vs Louisiana-Monroe (Mar 09, 2004)
5 - vs Centenary (Mar 23, 2004)
Triples: 2 - vs New Orleans (Mar 16, 2004)
Home runs: 5 - vs UCF (Feb 14, 2004)
Total bases: 35 - vs UCF (Feb 14, 2004)
Walks: 9 - vs UCF (Feb 14, 2004)
Strikeouts: 13 - vs Jacksonville State (Feb 20, 2004)
Sac hits: 2 - vs South Carolina (Mar 19, 2004)
Sac flies: 3 - vs New Orleans (Mar 16, 2004)
Stolen bases: 2 - vs Jacksonville State (Feb 20, 2004)
2 - vs Southeastern La. (Mar 13, 2004)
2 - vs Mississippi State (Mar 27, 2004)
Hit by pitch: 2 - vs UCF (Feb 14, 2004)
2 - vs UCF (Feb 15, 2004)
2 - vs South Carolina (Mar 19, 2004)
Caught stealing: 2 - vs UCF (Feb 13, 2004)
Runners LOB: 13 - vs UCF (Feb 14, 2004)
Hit into DP: 3 - vs Jacksonville State (Feb 21, 2004)
3 - vs Texas State (Feb 29, 2004)

Fielding

Putouts: 33 - vs South Carolina (Mar 19, 2004)
Assists: 16 - (4 games)
Errors: 4 - vs Houston (Mar 06, 2004)
Passed balls: 1 - (5 games)
DPs turned: 5 - vs Mississippi State (Mar 26, 2004)

Pitching

Innings pitched: 11.0 - vs South Carolina (Mar 19, 2004)
Strikeouts: 12 - vs South Carolina (Mar 19, 2004)
Hits allowed: 3 - vs New Orleans (Mar 16, 2004)
Wild pitches: 2 - vs Houston (Mar 05, 2004)
Hit batters: 2 - vs UCF (Feb 15, 2004)
2 - vs South Carolina (Mar 19, 2004)
2 - vs Mississippi State (Mar 27, 2004)

2004 LSU Baseball
Season Game Highs for LSU (as of Mar 29, 2004)
(All games)
INDIVIDUAL GAME HIGHS

Batting

At bats: 6 - (4 games)
Runs scored: 3 - (8 games)
Hits: 4 - (4 games)
RBIs: 7 - Ivan Naccarata vs Mississippi State (Mar 28, 2004)
Doubles: 2 - (4 games)
Triples: 1 - (8 games)
Home runs: 2 - Matt Liuzza vs South Carolina (Mar 21, 2004)
2 - Jon Zeringue vs South Carolina (Mar 21, 2004)
2 - Ivan Naccarata vs Mississippi State (Mar 28, 2004)
Total bases: 9 - Jon Zeringue vs Houston (Mar 07, 2004)
9 - Jon Zeringue vs South Carolina (Mar 21, 2004)
Walks: 3 - Clay Harris vs UCF (Feb 14, 2004)
3 - Blake Gill vs Houston (Mar 07, 2004)
Strikeouts: 4 - Jon Zeringue vs UCF (Feb 15, 2004)
4 - Derek Hebert vs Louisiana-Monroe (Mar 09, 2004)
Sac hits: 2 - J.C. Holt vs South Carolina (Mar 19, 2004)
Sac flies: 1 - (16 games)
Stolen bases: 1 - (12 games)
Hit by pitch: 1 - (13 games)
Caught stealing: 1 - Ivan Naccarata vs UCF (Feb 13, 2004)
1 - Jon Zeringue vs UCF (Feb 13, 2004)
1 - Will Harris vs Southeastern La. (Mar 13, 2004)
Runners LOB: 7 - Derek Hebert vs Houston (Mar 05, 2004)

Fielding

Putouts: 14 - Clay Harris vs Houston (Mar 05, 2004)
Assists: 7 - Derek Hebert vs Houston (Mar 05, 2004)
7 - Matt Horwath vs Southeastern La. (Mar 13, 2004)
Errors: 2 - Ivan Naccarata vs Mississippi State (Mar 28, 2004)
Passed balls: 1 - (5 games)

Pitching

Innings pitched: 9.0 - Clay Dirks vs Tulane (Mar 02, 2004)
Strikeouts: 8 - Justin Meier vs Jacksonville State (Feb 20, 2004)
8 - Justin Meier vs South Carolina (Mar 19, 2004)
Wild pitches: 2 - Justin Meier vs Houston (Mar 05, 2004)
Hit batters: 2 - Clay Dirks vs UCF (Feb 15, 2004)
2 - Justin Meier vs South Carolina (Mar 19, 2004)
2 - Clay Dirks vs Mississippi State (Mar 27, 2004)