

BASKETBALL



still holds the NCAA record for career points with 3,667 and for career scoring average with 44.2 points a game. Maravich was selected the National Player of the Year in 1970 after leading the Tigers to the NIT Final Four. He scored 50+ points an amazing 28 times. After LSU he went on to a 10-year professional career and was selected as one of the NBA's 50 greatest players in 1997.

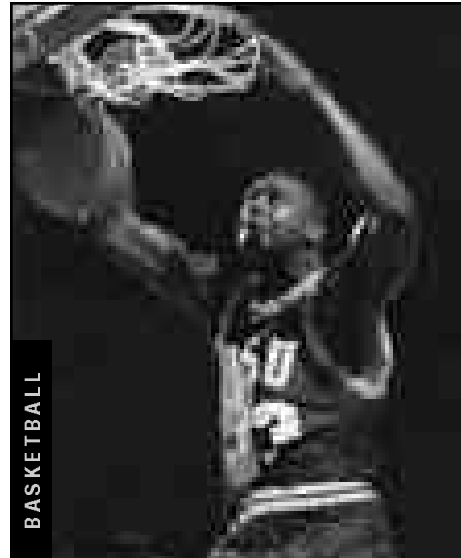
FOOTBALL



Billy Cannon

One of the true legends of college football in the South, Cannon was the 1959 Heisman Trophy winner that helped the Tigers to the 1958 national title. Cannon's most memorable performance came in 1959 against Ole Miss. The top-ranked Tigers trailed No. 3 Ole Miss 3-0 in the fourth quarter when Cannon fielded a punt, broke seven tackles and returned it 89 yards as the Tigers went on to win 7-3. He went on to a successful 11-year professional career.

BASKETBALL



Shaquille O'Neal

Was the first pick in the 1992 NBA Draft. He was named MVP of the league in 2000 and the Finals MVP in 2000, 2001 and 2002 after leading the Los Angeles Lakers to three World Championships. At LSU, O'Neal averaged 21.6 points and 13.6 rebounds for his career, and in 1991, he was named the World's Amateur Athlete of the Year as well as SEC Athlete of the Year and National Player of the Year. In 1997, he was named as one of the top 50 players in NBA history.

LSU Greats

Retired Numbers

The five athletes on this page are the only athletes to have their jerseys retired by LSU. Basketball has retired the No. 23 for Pete Maravich, No. 50 for Bob Pettit, Jr., and No. 33 for Shaquille O'Neal. Football's only retired jersey is the No. 20 worn by Billy Cannon, while baseball retired the No. 15 in honor of long-time coach and current athletic director Skip Bertman.

BASKETBALL



Bob Pettit, Jr.

Led LSU to its first NCAA Final Four in 1953 and he later became the first player in NBA history to exceed the 20,000-plus point barrier. Pettit is a member of the NBA Hall of Fame and in 1997 he was named as one of the top 50 players in NBA history.

BASEBALL



Skip Bertman

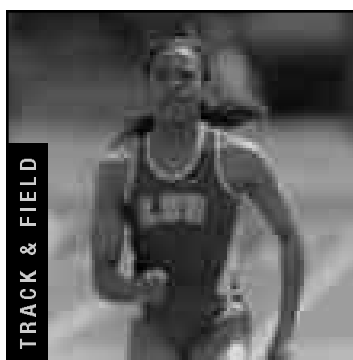
A legend in the college baseball ranks, Bertman created a dynasty at LSU, guiding the Tigers to five national titles in a 10-year stretch from 1991-2000. He also skippered the United States to a bronze medal at the 1996 Olympics in Atlanta and was an assistant on the gold medal-winning U.S. squad in Seoul, Korea in 1988. Bertman retired from coaching following the 2001 season and is currently the LSU athletic director.



TRACK & FIELD

Walter Davis

An Olympian in 2000, Davis helped LSU to national titles in 2001 and 2002. The SEC Male Athlete of the Year in 2002, he won six NCAA titles and earned a school-record nine All-America honors.



TRACK & FIELD

Peta-Gaye Dowdie

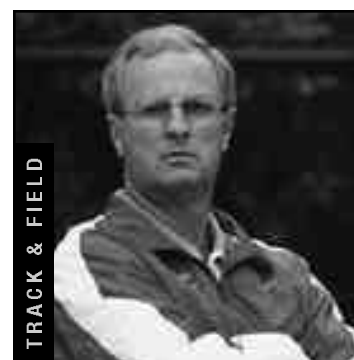
A 19-time All-American, Dowdie was a member of three NCAA Championship teams during her time at LSU and went on to compete for her native Jamaica at the 2000 Sydney Olympics.



BASKETBALL

Marie Ferdinand

The eighth pick overall in the 2001 WNBA draft by the Utah Starzz, a First-Team All-American in 2000-01 and helped the Lady Tigers to the Elite Eight in 2000 and to the NCAA Tournament three times.



TRACK & FIELD

Pat Henry

Has led the LSU track and field program to 23 national championships and 19 SEC titles. The only coach to win both men's and women's titles in the same year.



TRACK & FIELD

Esther Jones

A 21-time All-American while at LSU. Won a gold medal in the 4x100 meter relay team in Barcelona in 1992.



BASEBALL

Ben McDonald

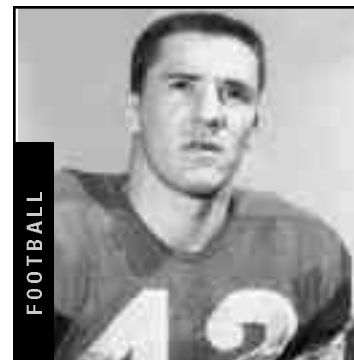
Named National Player of the Year in 1989 and he was later the first player chosen in the Major League Baseball Draft by the Baltimore Orioles.



FOOTBALL

Josh Reed

An All-American, Reed re-wrote both the LSU and SEC record books. The winner of the Biletnikoff Award in 2001, Reed finished his career with an SEC record 3,001 yards receiving.



FOOTBALL

Jimmy Taylor

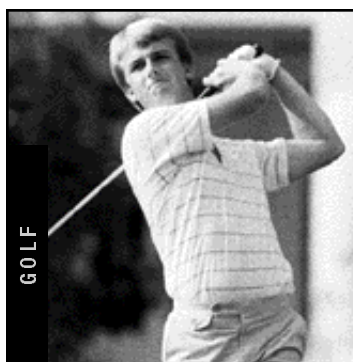
Tiger All-American fullback in 1957. Taylor became a Hall of Famer with the Green Bay Packers and was on both Super Bowl winners under Vince Lombardi.



FOOTBALL

Y.A. Tittle

A standout quarterback for the Tigers from 1944-47. Tittle went on to a Hall of Fame NFL career spanning 15 seasons where he was selected NFL MVP on two occasions ('57 and '62).



GOLF

David Toms

The two-time SEC Player of the Year, Toms has gone on to a successful career on the PGA Tour. Among his PGA Tour victories was a thrilling win at the PGA Championship in August of 2001.



FOOTBALL

Steve Van Buren

A halfback for the Tigers from 1941-43, Van Buren was an All-SEC selection in 1943, helping LSU to an Orange Bowl victory. An NFL Hall of Famer who enjoyed an eight-year career with the Eagles.



BASEBALL

Todd Walker

Capped his LSU career as the SEC's all-time leader in hits, runs, RBIs, and total bases. Walker, who is a member of the All-Time College World Series Team, led LSU to the national title in 1993.



Three-time NBA champion and 2000 league MVP Shaquille O'Neal joined the long list of prominent LSU alumni when he earned his degree in General Studies in December 2000.

Prominent LSU Alumni

While LSU continues to make its mark on the playing field, winning 38 national titles the state's flagship University continues to be a breeding ground for some of the greatest minds in the world past and present.



Reinosuke Hara, who did research at LSU in the 1950s and then later received the honorary **Doctorate of Science degree** from LSU in 1992, is **Vice-Chairman of Seiko Instruments**.



Jim Flores graduated from LSU and currently is the **Vice Chairman of Ocean Energy**, the World's Leader in Oil Exploration, based in Houston, Texas.



Lod Cook graduated from LSU with a bachelor's degree in Mathematics in 1955 and then earned his Master's degree in Petro Engineering in 1955. Cook served as **CEO of ARCO** for nine years. He later served as co-chairman of Global Crossing.



Lod Cook was the lead donor for the **Lod Cook Alumni Center** on the LSU Campus and in 1994 three of his friends, former Presidents of the United States **Jimmy Carter, George Bush and Gerald Ford** came to LSU for the dedication of the Alumni Center.



Mary L. Landrieu on Jan. 7, 1997 became the **first woman from Louisiana** elected to a full term in the **United States Senate**.



Dr. James Andrews is a **world-renowned orthopedic surgeon**. Andrews is a 1963 graduate of LSU and a 1967 graduate of LSU Medical School. While at LSU, Andrews **won the SEC indoor and outdoor titles in the pole vault**.



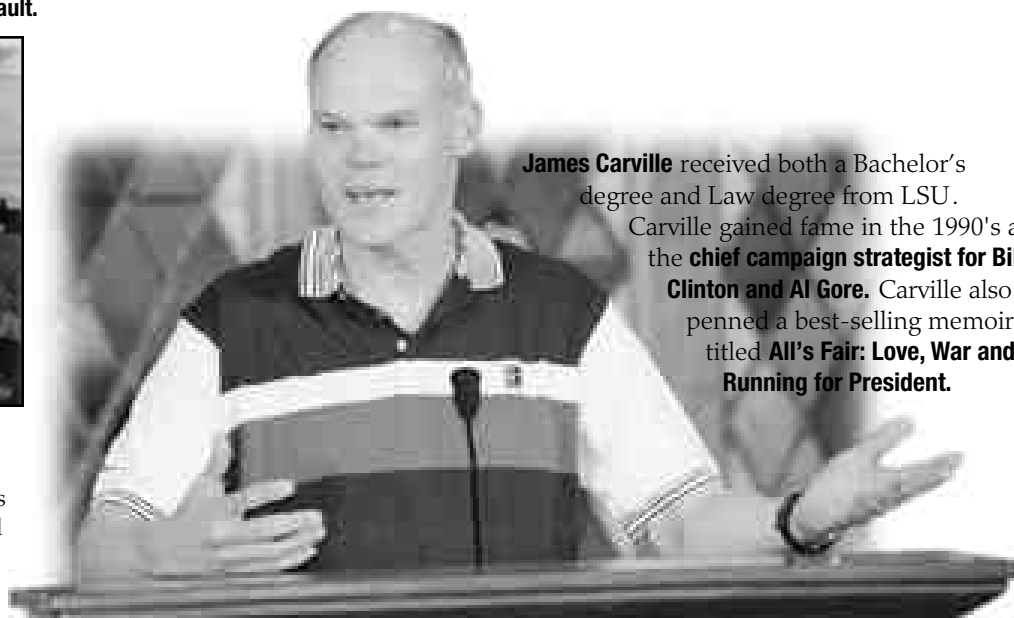
Harry Longwell graduated from LSU in 1963 with a Bachelor's degree in Petroleum Engineering and currently is **Executive Vice President of ExxonMobil**.



Kevin Faulk excelled in both the classroom and on the playing field as he graduated in just **3 years**. Faulk is currently a member of the **2002 Super Bowl Champion New England Patriots**.



Carlos Roberto Flores is currently **president of Honduras**, a position to which he was elected in 1997. Flores is married to the former Mary Carol Flake, also an alumnus of LSU.



James Carville received both a Bachelor's degree and Law degree from LSU. Carville gained fame in the 1990's as the **chief campaign strategist for Bill Clinton and Al Gore**. Carville also penned a best-selling memoir titled **All's Fair: Love, War and Running for President**.

OTHER NOTABLE ALUMNI

- **Elizabeth Ashley**, actress
- **John Ed Bradley**, novelist and Sports Illustrated writer.
- U.S. Senator **John Breaux**
- **Bill Conti**, Academy Award-winning Hollywood composer
- **Max Faget**, a graduate of LSU in the 1940's, has often been called the "Father of Manned Spacecraft." Faget, LSU's Alumnus of the Year, designed the Gemini and Mercury spacecraft both of

which served a significant role in America's quest to put a man on the moon.

- Current **Louisiana Governor Mike Foster** graduated from LSU with a Bachelor's degree in 1952.
- **Julie Giroux**, Emmy Award-winning composer
- **Eddie Jones**, a 1963 graduate of LSU in accounting, Jones is currently the **President/Chief Operating Officer of the Miami Dolphins**. In 2001 he was selected

to the LSU Alumni Hall of Distinction.

- A journalism graduate from LSU in 1966, **Thomas O. Ryder** is Chairman of the Board of the American Express Publishing Corporation.
- **Dolores Spikes**, president of the University of Maryland-Eastern Shore
- **Joanne Woodward**, Academy Award-winning actress.
- Seven **LSU** petroleum engineering alumni are **heads of major oil companies**.



Football *Tiger Stadium*

Athletic Facilities



Softball *Tiger Park*



Track & Field *Bernie Moore Track Stadium*



Indoor Arena *Pete Maravich Assembly Center*



Tennis *W.T. "Dub" Robinson Stadium*

COME ONE, COME ALL



LSU teams draw some of the largest crowds in all of college athletics

1,153,166 Fans passed through the gates of LSU home sporting events in 2001-02 for the 10 sports in which official attendance records are kept. The 1.15 million fans breaks the previous school record of 1.11 million set last year.

633,440 School-record total attendance for LSU's seven home games in 2001. LSU averaged 90,491 fans per game last year, a figure that ranked fifth in the nation.

52 of 64 Number of Louisiana parishes that Death Valley is more populated than for an LSU home game. LSU's average of over 90,000 fans per contest makes it Louisiana's fifth largest city on a Saturday night.

No. 1 LSU led the nation in baseball attendance for the seventh straight year. In 2002 Alex Box Stadium drew over 271,000 fans.



Baseball *Alex Box Stadium*



Administration *Athletic Administration Building*



Swimming & Diving *LSU Natatorium*



Soccer *LSU Soccer Park*



Tiger Pride

The Tiger Pride consists of students who attend LSU on a full-time basis. The organization assists the LSU football program while providing prospective student-athletes with information on all aspects of student life at LSU.

The group, formed in 1999, is involved in several community service activities. In addition, members of the Tiger Pride benefit from workshops and guest speakers that focus on career development.

Sharon Lewis serves as the director of the group.

SPONSORS



Sharon Lewis
Director



CC Thompson
Sponsor



Annette Lowery
Sponsor



Felicia Arvie
Co-Chair



Ingrid Patin
Co-Chair



Nicole Amstutz



Sonja Ardoin



Amanda Ball



Tamarika Barlow



Ginny Blount



Kennitra Boyance



Kim Cannon



Candice Carona



Jessica Cascio



Carol Clayton



Melissa Clem



Rebecca Cola



Valery Cotton



Cortney Coubarous



Tamera Davis



Taryn Favaron



Monique Fayard



Raquel Ferrer



Melissa Folse



Ashley Forrestier



Nicole Gobert



Charo Green



Cher Green



Ashley Hamlin



Ashlee Hartman



Terrie Hasten



Christina Herrera



Charnell Houston



Karla Johnson



Meredith Johnson



Kimberly Jones



Kayla Kelley



Laurie Knight



Leslie LaGrange



Candace Lair



Trinette Landry



Jillian Langlois



Christi Lewis



Bianca Mason



Stephanie Mayne



Angela Meredith



Valene Mouton



Megan Nichols



Simone Pattani



Allie Prest



Rainee Reed



Charlee Renaud



Cathleen Richard



Katie Roper



Haleh Samadnouri



Natalie Schillow



Tiffany Shorter



Brandi St.Julien



Erin St.Pierre



Shana Stumpf



Cherie Sutherland



Marisa Sylvester



Rhonda Thomas



Rebecca Valladeres



Murlanda Webb



Victoria Williams



Wendy Wiltz



Prisca Zeigler



The Premier Conference In College Football

It's difficult to argue against that. The SEC has placed at least eight teams in bowl games each of the past three seasons, a level of success unmatched by any other conference in the nation. In addition, the SEC led the nation in attendance for the 21st straight year and once again had more players selected in the NFL Draft than any other conference.

The Southeastern Conference

- The SEC sent **eight of its 12 member institutions to bowl games** in 2001, the third straight year the conference had at least eight teams in bowl games. In 2000 the SEC sent an NCAA record nine teams to postseason bowls. It marked the second straight year the SEC set an NCAA record, as the eight teams they placed in 1999 set the previous standard.

- For the 21st straight season, the **SEC recorded the largest total attendance figure of any conference in the nation**. In 2001, more than 5.5 million fans passed through the turnstiles at SEC stadiums. A total of 5,554,032 fans attended 77 home games in 2001, an average of 72,130, also tops in the nation. SEC stadiums were filled to an average of **97.9 percent of capacity** for each home game in 2001, also highest in the nation.

- The SEC distributed approximately \$78.1 million to the 12 league institutions in the revenue sharing plans for the 2000-2001 fiscal year. **The figure is the highest in league history**. The monies are generated from football television, bowls, SEC Football Championship Game, basketball television, the SEC Men's and Women's Basketball Tournament and the NCAA Championships.

- The SEC was the **first to develop** the conference championship football game on the NCAA Division I-A level in 1992. **LSU won its first conference championship game in 2001**, the Tigers first appearance in the title game since the SEC moved to its current format. The 11th SEC Football

Championship Game will be played on Dec. 7 at the Georgia Dome in Atlanta. The game will be televised by CBS Sports.

- The SEC was 29-7 (.806) in non-conference regular season games last season, second in the nation. Since 1992, the SEC is 281-77-2 (.783) in non-conference contests. In 15 of the last 22 seasons, **no league has posted a better non-conference regular season winning percentage than the SEC**.

THE NATION'S BEST CONFERENCE

The SEC was 29-7 (.806) in non-conference regular season games last season, second in the nation. In the 1990s, the SEC was 309-108-5 (.738) in non-conference contests.

Below is a composite record of how each conference has fared since 1990 (not including bowl games):

CONFERENCE	W-L-T	PCT.
Southeastern	365-124-5	.744
Big 12	176-75	.701
ACC	256-136-4	.652
Big Ten	298-158-6	.652
Pac-10	271-146-4	.648
Big Eight	138-74-4	.648
Big East	238-182-3	.566
Mountain West	54-50	.519
Southwest	100-96-5	.510
Western Athletic	239-267-4	.473
Conference USA	111-130	.461
MAC	136-258-6	.348
Big West	144-297-3	.328

- The **SEC had a national-best 47 players taken in the 2002 NFL Draft**. Eleven of the 12 SEC teams had at least one player drafted, including five by LSU. The SEC had six first-round selections, which was second to the Big East's eight. The Big Ten was second in total players selected with 35.

- Nine of the 12 SEC teams were ranked** for at least one week in either the Associated Press or the USA Today/ESPN Coaches' Weekly Rankings. **Three SEC teams – LSU, Florida and Tennessee – finished the 2001 season ranked in the top 10** in the nation in both polls. For the last five seasons, the SEC has had 28 teams ranked in the final AP poll, more than any other conference. For the last three seasons, the SEC has led the nation in most teams ranked in the final AP poll.

- In 2002, **each SEC team will play at least five teams that played in bowl games last season**. Seven teams will play seven games against teams that played in postseason bowls in 2001 while four will play in six.