

**2004 Schedule/Results (18-3, 2-1 SEC)**

Date	Opponent	Time/Result
<b>February</b>		
13 (Fri.)	at Central Florida	W, 4-3 (10)
14 (Sat.)	at Central Florida	W, 17-4
15 (Sun.)	at Central Florida	L, 5-6 (10)
17 (Tue.)	UL-MONROE	W, 7-1
20 (Fri.)	JACKSONVILLE STATE	W, 6-1
21 (Sat.)	JACKSONVILLE STATE	W, 14-2
22 (Sun.)	JACKSONVILLE STATE	W, 19-1 (7)
27 (Fri.)	TEXAS STATE	W, 10-1
28 (Sat.)	TEXAS STATE	W, 2-1
29 (Sun.)	TEXAS STATE	W, 13-2

<b>March</b>		
2 (Tue.)	#8 Tulane	W, 6-0 #
5 (Fri.)	HOUSTON	W, 9-3
6 (Sat.)	HOUSTON	L, 5-10
7 (Sun.)	HOUSTON	W, 8-2
9 (Tue.)	at UL-Monroe	W, 6-1
12 (Fri.)	SOUTHEASTERN LA.	W, 7-1
13 (Sat.)	SOUTHEASTERN LA.	W, 5-1
16 (Tue.)	NEW ORLEANS	W, 14-0 (7)
19 (Fri.)	at South Carolina	W, 6-3 (11)
20 (Sat.)	at South Carolina	L, 12-5
21 (Sun.)	at South Carolina	W, 12-7
23 (Tue.)	at Centenary	7 p.m.
26 (Fri.)	MISSISSIPPI STATE	6:30 p.m.
27 (Sat.)	MISSISSIPPI STATE	2 p.m.
28 (Sun.)	MISSISSIPPI STATE	1 p.m.
30 (Tue.)	at New Orleans	6:30 p.m.

<b>April</b>		
2 (Fri.)	at Auburn	6:30 p.m.
3 (Sat.)	at Auburn	3 p.m.
4 (Sun.)	at Auburn	1:30 p.m.
6 (Tue.)	TULANE	6:30 p.m.
9 (Fri.)	ARKANSAS	6:30 p.m.
10 (Sat.)	ARKANSAS	2 p.m.
11 (Sun.)	ARKANSAS	1 p.m.
13 (Tue.)	NICHOLLS STATE	6:30 p.m.
14 (Wed.)	Southeastern La.	7 p.m. #
16 (Fri.)	GEORGIA	6:30 p.m.
17 (Sat.)	GEORGIA	2 p.m.
18 (Sun.)	GEORGIA	1 p.m.
20 (Tue.)	at Southern	6:30 p.m.
23 (Fri.)	at Tennessee	6 p.m.
24 (Sat.)	at Tennessee	6 p.m.
25 (Sun.)	at Tennessee	1 p.m.
27 (Tue.)	Tulane	7 p.m. \$
30 (Fri.)	ALABAMA	6:30 p.m.

<b>May</b>		
1 (Sat.)	ALABAMA	2 p.m.
2 (Sun.)	ALABAMA	1 p.m.
7 (Fri.)	at Kentucky	5:30 p.m.
8 (Sat.)	at Kentucky	1 p.m.
9 (Sun.)	at Kentucky	Noon
14 (Fri.)	VANDERBILT	6:30 p.m.
15 (Sat.)	VANDERBILT	2 p.m.
16 (Sun.)	VANDERBILT	1 p.m.
19 (Wed.)	SOUTHEASTERN LA.	6:30 p.m.
21 (Fri.)	at Ole Miss	6:30 p.m.
22 (Sat.)	at Ole Miss	3 p.m.
23 (Sun.)	at Ole Miss	1:30 p.m.
26-30	SEC Tournament (Hoover, Ala.)	

<b>June</b>		
4-6	NCAA Regional (sites TBA)	
11-13/12-14	NCAA Super Regional (sites TBA)	
18-27/28	College World Series (Omaha, Neb.)	

# - Zephyr Field (Metairie, La.) \$ - Louisiana Superdome



# LSU TIGERS

(18-3, #1)

at

## Centenary (8-11)

**Tuesday, March 23 at 7 p.m. • Fair Grounds Field (6,400) • Shreveport, La.**

**Radio:** LSU Sports Network (Charles Hanagriff -- play-by-play, Bill Franques -- analyst)

**TV:** None

### Tigers Continue Road Swing vs. Centenary in Shreveport

No. 1 LSU (18-3, 2-1 SEC) continues a four-game road stretch at 7 p.m. Tuesday, as the Tigers travel to Shreveport, La., to face Centenary (8-11, 0-0 Mid-Continent Conference) at Fair Grounds Field.

The game can be heard on the LSU Sports Radio Network, including flagship WDGL-FM 98.1 in Baton Rouge. The radio broadcast may be also be accessed at [www.LSUsports.net](http://www.LSUsports.net).

LSU, ranked No. 1 by Collegiate Baseball magazine for the fifth consecutive week, has won seven of its last eight games, including a series victory at fourth-ranked South Carolina last weekend. The Tigers took two of three games from the Gamecocks in the opening series of Southeastern Conference play.

LSU resumes SEC action this weekend at Alex Box Stadium as the Tigers play host to Mississippi State (13-4, 1-2) in a three-games series.

Centenary, a member of the Mid-Continent Conference, has won three of its past five games, including an 11-2 non-conference victory over Texas College last Friday. The Gents will open conference play on April 10, when they play host to Valparaiso.

### The LSU-Centenary Series

LSU leads the all-time series with Centenary, 25-7-1, and the Tigers have won 21 consecutive meetings against the Gents. Centenary last defeated LSU in 1956, 2-1, in Shreveport.

The Tigers defeated the Gents, 15-0, last season (Feb. 11) at Fair Grounds Field. Tuesday's game marks the fourth time in five years LSU has faced Centenary at the Shreveport minor-league ball park.

Laval has a 17-2 career mark against the Gents, including a 2-0 record as LSU's coach. Centenary coach Ed McCann is 0-4 versus the Tigers during his six-year career.

LSU has a 34-8 record against Louisiana schools during Laval's three-year tenure as head coach. The Tigers are 6-0 this season against their in-state rivals.

### Pitching Matchup

LSU - So. LHP Jason Determann (2-0, 0.77 ERA, 11.2 IP, 2 BB, 8 SO)

Centenary - RHP Kevin Cassidy (2-3, 6.21 ERA)

LSU		Centenary	
<b>Record</b>	18-3 (2-1 SEC)	<b>Record</b>	8-11 (0-0 Mid-Continent)
<b>Ranking</b>	No. 1 Collegiate Baseball No. 3 Baseball America	<b>Ranking</b>	Not Ranked
<b>Coach</b>	No. 3 ESPN/Sports Weekly Smoke Laval	<b>Coach</b>	Ed McCann
<b>Career Record</b>	348-206-1 (10th year)	<b>Career Record</b>	107-191-2 (sixth year)
<b>LSU Record</b>	107-47-1 (third year)	<b>Centenary Record</b>	107-191-2 (sixth year)
<b>Laval vs. Cent.</b>	17-2	<b>McCann vs. LSU</b>	0-4

## Tracking the Tigers

Week	BA	CB	ESPN/SW
Preseason	2	3	3
Feb. 2	2	3	3
Feb. 9	2	3	3
Feb. 16	2	4	5
Feb. 23	3	1	5
March 1	3	1	4
March 8	5	1	5
March 15	4	1	5
March 22	3	1	3

## Baseball America (March 22)

- Stanford (15-3)
- Texas (26-3)
- LSU (18-3)**
- South Carolina (19-2)
- Miami, Fla. (19-4)
- Rice (16-6)
- Long Beach State (16-5)
- Ole Miss (18-1)
- Arizona State (20-5)
- Texas A&M (21-4)
- Wichita State (8-0)
- Tulane (15-7)
- Notre Dame (13-2)
- Auburn (17-5)
- Florida State (20-5)
- Southern Miss (17-3)
- Florida (20-5)
- East Carolina (18-5)
- UC-Irvine (16-6-1)
- Nebraska (13-4)
- Tennessee (19-3)
- Florida Atlantic (21-4)
- Central Florida (20-4)
- North Carolina (16-5)
- Virginia (18-5)

## Collegiate Baseball (March 22)

- LSU (18-3)**
- Stanford (15-3)
- Texas (26-3)
- South Carolina (19-2)
- Ole Miss (18-1)
- Notre Dame (13-2)
- Wichita State (8-0)
- Miami, Fla. (19-4)
- Arizona State (20-5)
- Rice (16-6)
- Long Beach State (16-5)
- Florida State (20-5)
- Tennessee (19-3)
- Florida (20-5)
- Texas A&M (21-4)
- North Carolina (16-5)
- Auburn (17-5)
- Nebraska (13-4)
- UC-Irvine (16-6-1)
- Tulane (15-7)
- North Carolina State (15-6)
- Florida Atlantic (21-4)
- Southern Miss (17-3)
- Mississippi State (13-4)
- East Carolina (18-5)

## The LSU Lineup

Player	Pos.	Cl.-Exp.	B/T	Avg.	HR	RBI	Notable
Matt Liuzza	C	So.-1L	R/R	.361	6	22	Named SEC Player of the Week
Clay Harris	3B/1B	Jr.-2L	R/R	.291	1	12	4-for-12 with one 2B at USC
Blake Gill	2B	Jr.-2L	L/R	.341	0	13	5-for-14 with 2 RBI at USC
Ivan Naccarata	3B	Sr.-1L	L/R	.212	1	10	GW RBI at USC on March 19
<b>or</b>							
Will Harris	1B	So.-1L	R/R	.517	2	11	3-for-6 with 3 RBI at USC
Derek Hebert	SS	Jr.-JC	L/R	.333	1	5	1-for-4 in one game at USC
<b>or</b>							
Matt Horwath	SS	Fr.-RS	R/R	.306	1	6	3-for-8 with one 2B at USC
Ryan Patterson	LF	Jr.-1L	R/R	.330	2	22	.400 with 1 2B, 5 RBI at USC
J.C. Holt	CF	Jr.-2L	L/R	.430	2	16	.455 with 2 2B, 1 HR, 2 RBI at USC
Jon Zeringue	RF	Jr.-2L	R/R	.400	6	18	.385 with 3 HR, 3 RBI at USC
Nick Stavinoha	DH	Jr.-JC	R/R	.309	3	15	3-for-13, 1 2B, 1 RBI at USC

## Tigers Win Series at Third-Ranked South Carolina

LSU opened defense of its SEC championship by winning two of three games at No. 3 South Carolina last weekend. South Carolina entered last weekend's series as the SEC leader in batting average, home runs and ERA, but the Tigers out-hit the Gamecocks in the series, 40-28, and LSU out-homered USC, 7-4. LSU hit .336 (40-for-119) in the series with nine doubles and seven homers.

Meanwhile, the Tigers' pitching staff limited the potent Gamecock offense to a .259 (28-for-108) batting average.

Right fielder Jon Zeringue unloaded three homers in the series, driving in three runs and scoring five times. Left fielder Ryan Patterson hit .400 (6-for-15) over the weekend with one double and five RBI, and center fielder J.C. Holt batted .455 (5-for-11) with two doubles, one homer, four runs and two RBI.

LSU is now hitting .345 as a team with 53 doubles, eight triples and 26 homers. The Tigers have reached double-figures in hits in 12 consecutive games, including an 18-hit outburst in Sunday's victory.

## Liuzza Named SEC Player of the Week

LSU catcher Matt Liuzza, a sophomore from Metairie, La., was named Monday as the SEC Player of the Week after leading the Tigers to a series victory at South Carolina.

Liuzza hit three homers and one double in the series, collecting five RBI and posting a .933 slugging percentage. He hit two homers in Sunday's 12-7 victory, becoming the first LSU player to have a multi-homer game this season.

Liuzza's two homers on Sunday came against USC ace Matt Campbell, who had not allowed run in 27.2 innings entering the game. Liuzza hit a solo shot in the second inning to tie the game at 1-1, and his three-run blast in the fourth gave the Tigers a 4-1 lead they would never relinquish.

Liuzza was 6-for-15 (.353) at the plate in LSU's four games last week -- including a 14-0 victory over UNO -- with one double, four homers, seven RBI and five runs. Liuzza is hitting .361 (30-for-83) on the year with seven doubles, six homers, 22 RBI and 15 runs.

Liuzza compiled a 14-game streak -- the longest of his career -- from Feb. 14-March 12, exceeding the 12-game streak he compiled during the 2003 season. During the 2004 streak, Liuzza batted .407 (22-for-54) with five doubles, two homers, 13 RBI and 10 runs.

**Liuzza's name appears on the first Johnny Bench Award "Watch List" released in early March. The Johnny Bench Award is given annually to the nation's outstanding collegiate catcher. Former LSU Brad Cresse was the first recipient of the award in 2000.**

**The 2004 Johnny Bench Award ceremony will take place on June 30, in Wichita, Kan.**

## Dirks Named To Roger Clemens Award Watch List

Freshman left-hander **Clay Dirks**' name has been added to the "Watch List" for the 2004 Roger Clemens Award, which is given to the nation's outstanding collegiate pitcher. The "Cy Young Award" of college baseball, the Clemens Award ceremony will take place on July 15 in Houston.

In a four-hit shutout of Tulane on March 2, Dirks allowed just two Green Wave runners to reach second base, and he retired 20 of the final 22 batters he faced. For that effort, Dirks was named the SEC Pitcher of the Week by the league office, and he earned National Pitcher of the Week recognition from the National Collegiate Baseball Writers Association.

Dirks, a redshirt freshman from Hernando, Miss., allowed just one double and three singles against Tulane, and recorded one walk and seven strikeouts. Dirks, who was making just the third start of his collegiate career, missed the 2003 season after undergoing surgery on his elbow in the summer of 2002.

Dirks' gem marked the first complete-game shutout for an LSU pitcher since Brian Wilson blanked Florida on five hits on March 14, 2003. The game was LSU's first shutout as a team since April 15, 2003, when the Tigers blanked Tulane, 8-0, in Alex Box Stadium.

## Smoke Gets LSU Win No. 100

**Smoke Laval**, in his third season as the Tigers' head coach, earned his 100th LSU victory on March 5 when the Tigers defeated Houston, 9-3. The 2003 SEC Coach of the Year, Laval has a 107-47-1 (.694) mark at LSU and a 348-206-1 (.628) record in 10 seasons as a collegiate head coach. He served as the head coach at Louisiana-Monroe for seven seasons (1994-2000) prior to taking the reins of the LSU program as head coach. Laval was an LSU assistant coach for 10 seasons (1984-93), helping to lead the Tigers to two national championships (1991, 1993), six College World Series appearances and five SEC titles.

## Will Harris Named Louisiana Player of the Week on March 16

Sophomore 1B **Will Harris**, the younger brother of LSU's all-SEC infielder Clay Harris, batted .875 (7-for-8) during the week of March 8-14 with one homer, six RBI and two runs. He was named on March 16 as the Louisiana Player of the Week by the Louisiana Sportswriters Association.

Will Harris was 4-for-4 at the plate with one run and two RBI in LSU's win over UL-Monroe March 9, and he launched a grand slam -- LSU's first this season -- in the Tigers' victory over Southeastern Louisiana March 12.

From March 7-12, Will Harris collected eight hits in eight at-bats over three games versus Tulane, UL-Monroe and Southeastern Louisiana. The streak began with an eighth-inning single versus Tulane (March 2), and it ended with a fourth-inning strikeout versus SLU (March 13).

## Mestepey Earns Career Victory No. 25

Junior left-hander **Lane Mestepey** earned his 25th career victory March 13 against Southeastern Louisiana as he pitched 6.2 innings, allowing just one run on eight hits with four walks and four strikeouts.

Mestepey, a two-time all-SEC selection, needs one more victory to move into the LSU Top 10 list for pitching wins. He is currently one victory behind Mark Guthrie (26 wins, 1984-87) for 10th place on the all-time LSU list.

Mestepey has a 25-10 mark during his three seasons on the mound for the Tigers.

## Tigers' 18-Game Non-Conference Home Win Streak Finally Halted

LSU's streak of non-conference, regular-season home victories ended at 18 on March 6 when the Tigers dropped a 10-5 decision to Houston. Prior to March 6, LSU's last loss in a non-conference regular-season game in Alex Box Stadium came on Feb. 22, 2003, when Houston, ironically, posted a 7-2 win.

The Tigers' win streak in non-conference home games currently stands at four, as LSU has defeated Houston (March 7), Southeastern Louisiana twice (March 12 and 13) and New Orleans (March 16) since the 18-game streak ended.

## ESPN/Sports Weekly (March 22)

1. Texas (29) (26-3)
2. Stanford (6) (15-3)
3. **LSU (5) (18-3)**
4. Rice (16-6)
5. South Carolina (19-2)
6. Miami, Fla. (19-4)
7. Long Beach State (16-5)
8. Arizona State (20-5)
9. Ole Miss (18-1)
10. Wichita State (8-0)
11. Notre Dame (13-2)
12. Texas A&M (21-4)
13. Auburn (17-5)
14. Florida State (20-5)
15. Florida (20-5)
16. Southern Miss (17-3)
17. Nebraska (13-4)
18. Tulane (15-7)
19. Florida Atlantic (20-4)
20. Tennessee (19-3)
21. North Carolina (16-5)
22. East Carolina (18-5)
23. North Carolina State (15-6)
24. Georgia (16-4)
25. Mississippi State (13-4)

## 2004 SEC Standings (March 22)

Eastern Division			
Team	SEC	Pct.	Overall
Florida	2-1	.667	18-3
Georgia	2-1	.667	14-3
Kentucky	2-1	.667	14-6
Tennessee	2-1	.667	19-3
South Carolina	1-2	.333	19-2
Vanderbilt	0-3	.000	14-5
Western Division			
Team	SEC	Pct.	Overall
Ole Miss	3-0	1.000	18-1
LSU	2-1	.667	18-3
Alabama	1-2	.333	15-7
Arkansas	1-2	.333	15-8
Auburn	1-2	.333	17-5
Miss. State	1-2	.333	13-4

## This Week in the SEC (March 23-28)

(All times are Central)

### Tuesday, March 23

Auburn at UAB • 7 p.m.

LSU at Centenary • 7 p.m.

Ole Miss at Southern Miss • 6:30 p.m.

Birmingham Southern at Miss. State • 6:30 p.m.

Tennessee at East Tennessee State • 6 p.m.

Morehead State at Vanderbilt • 6 p.m.

### Wednesday, March 24

Morehead State at Alabama • 6:30 p.m.

Dartmouth at Florida • 5:30 p.m.

Georgia Tech at Georgia • 6 p.m.

Marshall at Kentucky • 5:30 p.m.

Samford at Miss. State • 6:30 p.m.

Wofford at South Carolina • 6 p.m.

### Friday-Sunday, March 26-28

Ole Miss at Alabama • 6:30 p.m., 4 p.m., 2 p.m.

S. Carolina at Arkansas • 6:30 p.m., 2 p.m., 12:30 p.m.

Auburn at Tennessee • 6 p.m., 6 p.m., 1 p.m.

Florida at Kentucky • 5:30 p.m., 1 p.m., 11 a.m.

Mississippi State at LSU • 6:30 p.m., 2 p.m., 1 p.m.

Georgia at Vanderbilt • 7 p.m., 4 p.m., 1 p.m.

## 2004 LSU TV Schedule

Feb. 14	at UCF	Noon	JSN
Feb. 15	at UCF	Noon	JSN
March 2	at Tulane	7 p.m.	JSN
March 9	at UL-Monroe	6:30 p.m.	JSN
March 21	at South Carolina	12:30 p.m.	JSN
March 30	at New Orleans	6:30 p.m.	JSN
April 4	at Auburn	1:30 p.m.	JSN
April 10	Arkansas	2 p.m.	Fox
April 11	Arkansas	1 p.m.	Cox
April 16	Georgia	6:30 p.m.	Cox
April 24	at Tennessee	6 p.m.	CSS
April 25	at Tennessee	1 p.m.	JSN
April 27	vs. Tulane (tape-delayed)	10 p.m.	Cox
April 30	Alabama	6:30 p.m.	Cox
May 9	at Kentucky	Noon	JSN
May 14	Vanderbilt	6:30 p.m.	Cox
May 22	at Ole Miss	3 p.m.	Fox
May 23	at Ole Miss	1:30 p.m.	JSN

**JSN - Jumbo Sports Network**  
**Cox - Cox Sports Television**  
**Fox - Fox Sports Southwest (SEC-TV)**  
**CSS - Comcast Sports Southeast**

All Times are Central and Subject to Change

## The LSU Injury Report

**INF Bryan Harris** -- Harris, a transfer from Santa Ana (Calif.) College, was projected to be the Tigers' starter at third base; however, a hernia operation limited his participation during fall practice, and he underwent arthroscopic surgery in January to remove bone chips from his right knee. He is scheduled to receive a medical redshirt this season.

**INF Matt Horwath** -- Horwath, a medical redshirt in 2003 after undergoing right shoulder surgery, started LSU's first seven games at shortstop this season before experiencing soreness in the shoulder. An MRI was performed on the shoulder on March 2, and the results showed no new injuries. Horwath has been cleared to play as long as he does not experience continued soreness in the shoulder.

**RHP Brandon Nall** -- LSU's closer at the beginning of 2003, he pitched in just six games last season before suffering a torn labrum in his shoulder, which required surgery. He could return to the mound at some point this season, depending upon the progress of his rehabilitation.

**OF Quinn Stewart** -- A starter in 37 games last season, Stewart had the hamate bone in his left wrist removed in early March, and he will receive a redshirt this season. Even without the wrist injury, Stewart likely would have received a redshirt this year due to the tremendous depth LSU has in the outfield. With current starting outfielders Jon Zeringue, J.C. Holt and Ryan Patterson expected to be drafted this June, Stewart should be one of the outfield starters in 2005.

## SEC Coaches Select LSU to Repeat as League Champion

The LSU Tigers are the favorite to win the Southeastern Conference Baseball Championship, as voted by the league's 12 baseball coaches in the 13th annual preseason SEC poll. The Tigers seek to capture their 14th SEC Championship, having won or shared the title three times in the past eight seasons (1996, 1997 & 2003) and seven times since 1990. LSU won the both the overall SEC Championship and Western Division titles in 2003. In the overall SEC Champion vote, LSU received 11 of the 12 championship votes in the poll, the most possible by one team. South Carolina received the other vote.

In addition to picking a preseason SEC champion, the league's head coaches voted a predicted order of finish in the SEC Eastern and Western Divisions. In the Eastern Division, South Carolina was the favorite with 63 points. Florida came in second with 58 points and Vanderbilt third with 42 points. LSU was the predicted winner in the Western Division with a total of 66, again collecting the maximum points for a team. Auburn was second with 51, while Ole Miss finished third with 41.

## SEC Pre-Season Coaches Poll

Team	Pts.	'03 SEC Rec/Finish
<b>Eastern Division</b>		
1. S. Carolina (8)	63	19-11/1st
2. Florida (4)	58	13-16-1/3rd
3. Vanderbilt	42	14-165/2nd
4. Georgia	36	10-20/5th
5. Tennessee	30	13-17/4th
6. Kentucky	17	9-20/6th
<b>Western Division</b>		
1. LSU (11)	66	20-9-1/1st
2. Auburn (1)	51	18-12/2nd
3. Ole Miss	41	17-13/4th
4. Alabama	38	14-16/t5th
5. Miss. State	30	17-12/3rd
6. Arkansas	20	14-16/t5th

( ) - First Place Votes      SEC Champion: LSU (11); South Carolina (1)



**41**

**Nate Bumstead**

RH Pitcher  
6-1, 210, R-R, Sr., 1L  
Las Vegas, Nev. (College of Southern Idaho)

- Emerged as one of the top pitchers in the Southeastern Conference in 2003, earning second-team all conference honors
- Injured right shoulder in Feb. 3 intrasquad game; an MRI revealed a torn labrum, however, team doctor has cleared him to pitch
- Defeated Houston (March 7), pitching a season-high 8.1 innings and allowing two runs on nine hits with seven strikeouts

**Bumstead's LSU Career Highs**

Innings: 9.0 (twice)  
 Strikeouts: 10 vs. Ole Miss (4/13/03)  
 Hits Allowed: 11 vs. Mississippi State (5/23/03)  
 Runs: 8 (twice)  
 Earned Runs: 8 (twice)  
 Walks: 4 vs. Tennessee (4/27/03)



**33**

**Jason Determann**

Pitcher  
5-10, 170, R-L, So., 1L  
Baton Rouge, La. (Catholic HS)

- Outstanding southpaw who earned 2003 Freshman all-America honors as a long reliever and part-time starter
- 10-0 career record at LSU
- Has fired 10 consecutive scoreless innings entering Centenary game
- Earned victory in Tigers' season opener at Central Florida (Feb. 13), allowing one run on three hits in four innings with one walk and two strikeouts
- Picked up the win over Texas State (Feb. 28) with 2.1 relief innings - no runs, one hit, one walk and two Ks

**Determann's LSU Career Highs**

Innings: 8.0 vs. New Orleans (4/30/03)  
 Strikeouts: 7 vs. Nicholls State (4/2/03)  
 Hits Allowed: 8 (twice)  
 Runs: 6 vs. SE Louisiana (4/23/03)  
 Earned Runs: 5 vs. SE Louisiana (4/23/03)  
 Walks: 4 vs. South Carolina (6/15/03)



**13**

**Clay Dirks**

LH Pitcher  
6-4, 235, L-L, Fr., RS  
Hernando, Miss. (Hernando HS)

- Named National Pitcher of the Week (NCBWA) and SEC Pitcher of the Week after firing a four-hit shutout (1 BB, 7 Ks) versus eighth-ranked Tulane on March 2 at Zephyr Field in Metairie, La.
- Allowed just two Tulane base runners to advance to second base and retired 20 of the final 22 batters he faced
- Pitched 17.1 consecutive innings without allowing an earned run in a three-game stretch from Feb. 22-March 9
- Named to the "Watch List" for the 2004 Roger Clemens Award, given to the nation's outstanding collegiate pitcher

**Dirks' LSU Career Highs**

Innings: 9 vs. Tulane (3/2/04)  
 Strikeouts: 7 vs. Tulane (3/2/04)  
 Hits Allowed: 6 at Central Florida (2/15/04)  
 Runs: 3 at Central Florida (2/15/04)  
 Earned Runs: 3 at Central Florida (2/15/04)  
 Walks: 3 at Central Florida (2/15/04)



**29**

**Jordan Faircloth**

Pitcher  
6-3, 215, R-R, Jr., 1L  
Alexandria, La. (Alexandria HS)

- Talented pitcher with a side-arm delivery who will continue to contribute as a reliever in 2004 after making his LSU debut last season
- Earned first career save vs. SE Louisiana (March 13), working a career-high 2.1 innings with no runs, four hits, no walks and one strikeout
- Also pitched 2.1 scoreless innings at UL-Monroe (March 9) with no hits, one walk and two Ks

**Faircloth's LSU Career Highs**

Innings: 2.1 (four occasions)  
 Strikeouts: 2 (three occasions)  
 Hits Allowed: 4 (twice)  
 Runs: 3 vs. Ole Miss (4/13/03)  
 Earned Runs: 3 vs. Ole Miss (4/13/03)



**3**

**Blake Gill**

Infielder  
5-10, 190, L-R, Jr., 2L  
Bradenton, Fla. (Manatee HS)

- Talented player who earned 2003 second-team all-SEC recognition at second base
- Batted .357 in South Carolina series with one double and two RBI
- Has produced three 3-hit games: at UCF (Feb. 15), vs. Houston (March 5), vs. SE Louisiana (March 13)

**Gill's LSU Career Highs**

At-Bats: 6 at Georgia (3/22/03)  
 Hits: 4 vs. Mercer (2/17/02)  
 Runs Scored: 3 (three occasions)  
 Doubles: 1 (several occasions)  
 Triples: 1 (several occasions)  
 Home Runs: 1 (several occasions)  
 RBI: 6 vs. Georgia (4/14/02)  
 Stolen Bases: 1 (several occasions)



**21**

**Clay Harris**

Infielder  
6-4, 230, R-R, Jr., 2L  
Slidell, La. (Slidell HS)

- Became a regular in the LSU lineup last season in early March and emerged as a 2003 first-team all-SEC performer at first base; has played this season as starter at both first base and third base
- Already has three triples this season after recording no 3Bs in his first two LSU seasons
- 4-for-12 at South Carolina with one double
- Launched a homer and drove in four runs at UCF (Feb. 14)

**C. Harris' LSU Career Highs**

At-Bats: 6 (three occasions)  
 Hits: 3 (several occasions)  
 Runs Scored: 3 at Alabama (3/30/03)  
 Doubles: 2 (twice)  
 Triples: 1 (three occasions)  
 Home Runs: 2 (three occasions)  
 RBI: 6 vs. Ole Miss (4/13/03)  
 Stolen Bases: 1 vs. Miss. State (5/23/03)



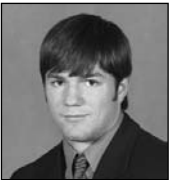
**25**  
**Will Harris**

First Baseman  
6-3, 240, R-R, So., 1L  
Slidell, La. (Slidell HS)

- Named Louisiana Player of the Week on March 16 after batting .875 (7-for-8) in a three-game stretch (vs. UL-Monroe and SE La.) with a grand slam and six RBI
- Recorded eight hits in eight at-bats in a four-game stretch from March 2-13
- 4-for-4 at UL-Monroe (March 9) with two RBI
- 2-for-2 with a grand slam - LSU's only slam this season -- vs. SE Louisiana (March 12)

**W. Harris' LSU Career Highs**

At-Bats: 5 at Georgia (3/22/03)  
Hits: 4 at UL-Monroe (3/9/04)  
Runs Scored: 2 (several occasions)  
Doubles: 1 (four occasions)  
Triples: none  
Home Runs: 1 (four occasions)  
RBI: 4 vs. SE Louisiana (3/12/04)  
Stolen Bases: none



**2**  
**Derek Hebert**

Infielder  
5-10, 180, L-R, Jr., JC  
New Iberia, La. (El Camino College)

- Excellent all-around prospect that transferred to LSU after one year at El Camino College in Torrance, Calif.
- Has started 10 games at shortstop as regular SS Matt Horwath has been bothered at times by a sore arm
- Has recorded five two-hit games this season

**Hebert's LSU Career Highs**

At-Bats: 4 (several occasions)  
Hits: 2 (several occasions)  
Runs Scored: 2 (three occasions)  
Doubles: 1 (four occasions)  
Triples: none  
Home Runs: 1 at Central Florida (Feb. 14)  
RBI: 1 (several occasions)  
Stolen Bases: none



**1**  
**J.C. Holt**

Outfielder  
5-9, 170, L-R, Jr., 2L  
Sieper, La. (Oak Hill HS)

- A 2004 pre-season all-American who was named in 2003 as the MVP of the Cape Cod Baseball League
- Batting average has remained above .400 for 11 straight games, since a 4-for-5 outing (one 2B, three RBI, two runs) at Tulane (March 2)
- 10-game hit streak from Feb. 22-March 12, batting .438 (21-for-48) during the streak with three doubles, one triple, one homer, nine RBI and 12 runs

**Holt's LSU Career Highs**

At-Bats: 6 (several occasions)  
Hits: 4 (several occasions)  
Runs Scored: 3 (several occasions)  
Doubles: 2 vs. Loyola-N.O. (5/6/03)  
Triples: 1 (several occasions)  
Home Runs: 2 vs. Northeastern (5/30/03)  
RBI: 5 vs. Northeastern (5/30/03)  
Stolen Bases: 3 vs. Northwestern St. (2/8/03)



**34**  
**Matt Horwath**

Infielder  
5-9, 175, R-R, Fr., RS  
Lake Mary, Fla. (Lake Mary HS)

- Skilled infielder who played as LSU's starting shortstop for the first eight games of the 2003 season before suffering a right shoulder injury that required surgery
- Has missed 10 games this season due to soreness in his surgically-repaired shoulder
- 2-for-3 with one HR and two RBI at Central Florida (Feb. 14)

**Horwath's LSU Career Highs**

At-Bats: 5 vs. Kansas (2/14/03)  
Hits: 3 vs. UL-Monroe (2/17/04)  
Runs Scored: 2 (several occasions)  
Doubles: 1 (three occasions)  
Triples: none  
Home Runs: 1 (twice)  
RBI: 2 (twice)  
Stolen Bases: 1 vs. Northwestern St. (2/8/03)



**14**  
**Matt Liuzza**

Catcher  
6-0, 190, R-R, So., 1L  
Kenner, La. (Rummel HS)

- Played brilliantly last season as a true freshman, starting 54 games at catcher and leading the Tigers in hitting during the post-season
- Has been named to the "Watch List" for the 2004 Johnny Bench Award, given to the nation's outstanding collegiate catcher
- Named SEC Player of the Week March 22 after leading LSU to series win over S. Carolina
- Career-best 14-game hit streak from Feb. 14-March 9; batted .407 (22-for-54) during the streak with five doubles, two homers, 13 RBI and 10 runs
- Launched homers in consecutive games vs. Texas State and Tulane (Feb. 29 and March 2)

**Liuzza's LSU Career Highs**

At-Bats: 5 (several occasions)  
Hits: 3 (four occasions)  
Runs Scored: 3 (twice)  
Doubles: 2 vs. Auburn (5/10/03)  
Triples: none  
Home Runs: 2 at South Carolina (3/21/04)  
RBI: 4 at South Carolina (3/21/04)  
Stolen Bases: 1 vs. Northwestern St. (2/9/03)



**35**  
**Justin Meier**

RH Pitcher  
6-0, 210, R-R, So., 1L  
Windermere, Fla. (West Orange HS)

- Superb hurler who made an immediate impact last season as a true freshman, pitching in the SEC weekend rotation and earning '03 Freshman all-America recognition
- Four wins in his last five starts; has not allowed more than three runs in any of his six starts this season
- Defeated SE Louisiana (March 12), limiting the Lions to one run on six hits in seven innings with two BB and two Ks
- Limited Texas St. (Feb. 27) to just one run on four hits in 7.1 innings with two BB and two Ks
- Recorded career-high eight Ks in 6.2 innings vs. Jacksonville State; held JSU to one run on four hits with one walk

**Meier's LSU Career Highs**

Innings: 9.0 (twice)  
Strikeouts: 8 vs. South Carolina (4/4/03);  
8 vs. Jacksonville State (2/20/04);  
8 at South Carolina (3/19/04)  
Hits Allowed: 12 vs. Baylor (6/8/03)  
Runs: 5 (twice)  
Earned Runs: 5 (twice)  
Walks: 5 at Mississippi State (5/2/03)



**46**  
**Lane Mestepey**

LH Pitcher  
6-0, 195, L-L, Jr., 2L  
Zachary, La. (Central Private HS)

- LSU's No. 1 pitcher in 2001 and 2002; returned to the mound this season after receiving a medical redshirt in 2003 due to a shoulder injury
- A two-time first-team all-SEC selection with a 25-10 career record in 43 starts
- Has allowed only one run in four of his six starts this season
- Defeated Central Florida (Feb. 14) in his first outing in 20 months, limiting the Knights to one run on five hits in five innings with two walks and one strikeout
- Pitched season-high 6.2 innings in defeating SE Louisiana (March 13), limiting SLU to one run on eight hits with four walks and four strikeouts

**Mestepey's LSU Career Highs**

Innings: 10.0 at Tulane (6/1/01)  
Strikeouts: 8 vs. Long Beach State (3/2/02)  
Hits Allowed: 13 vs. Minnesota (5/25/01)  
Runs: 8 (twice)  
Earned Runs: 8 vs. Minnesota (5/25/01)  
Walks: 5 at Ole Miss (3/23/02)



**7**  
**Ivan Naccarata**

Infielder  
5-10, 185, L-R, Sr., 1L  
Longueuil, Quebec (Chipola JC)

- Joined the LSU program in January, 2003, and made an immediate impact as the Tigers' starting third baseman
- Has played recently on a platoon basis, starting against right-handed pitchers
- Played for three weeks during the fall of 2003 with the Canadian National Team
- Fluent in four languages - English, French, Slovenian and Italian
- Three RBI in win over Jacksonville State (Feb. 22), tying his career high

**Naccarata's LSU Career Highs**

At-Bats: 6 (three occasions)  
Hits: 4 vs. Tulane (5/31/03)  
Runs Scored: 4 (twice)  
Doubles: 2 (twice)  
Triples: 1 (five occasions)  
Home Runs: 1 (several occasions)  
RBI: 3 (several occasions)  
Stolen Bases: 1 (several occasions)



**12**  
**Ryan Patterson**

Outfielder  
5-11, 200, R-R, Jr., 1L  
Rowlett, Texas (Texarkana College)

- A 2003 first-team all-SEC selection as a designated hitter
- Voted a 2004 first-team pre-season all-American by the National Collegiate Baseball Writers Association
- 4-for-5 with a career-high five RBI (1 2B, two runs) vs. Texas State (Feb. 29)
- Five three-hit games, including 3-for-6 at UCF (Feb. 14) with one HR and three RBI; 3-for-6 at South Carolina with one RBI and one run

**Patterson's LSU Career Highs**

At-Bats: 6 (five occasions)  
Hits: 4 (three occasions)  
Runs Scored: 4 vs. Mississippi State (5/24/03)  
Doubles: 2 (three occasions)  
Triples: 1 vs. Mississippi State (5/24/03)  
Home Runs: 1 (several occasions)  
RBI: 5 vs. Texas State (2/29/04)  
Stolen Bases: 1 (several occasions)



**27**  
**Greg Smith**

LH Pitcher  
6-0, 190, L-L, So., 1L  
Alexandria, La. (Alexandria HS)

- Talented hurler who has been a contributor as a middle and long reliever
- Has allowed just one run in 14.1 innings this season
- First career victory at South Carolina (March 19); worked two scoreless innings, allowing one hit with four strikeouts
- Worked 2.1 innings vs. Houston (March 6), allowing one run on two hits with season-high four strikeouts
- Has nine strikeouts in his last five innings, allowing two hits, no runs, one walk

**G. Smith's LSU Career Highs**

Innings: 4.1 vs. Tulane (4/29/03)  
Strikeouts: 5 at Mississippi State (5/2/03)  
Hits Allowed: 8 at Long Beach State (2/28/03)  
Runs: 8 at Long Beach State (2/28/03)  
Earned Runs: 5 vs. Loyola-New Orleans (5/6/03)  
Walks: 2 (two occasions)



**43**  
**Nick Stavinoha**

DH/Catcher  
6-1, 220, R-R, Jr., JC  
Houston, Texas (San Jacinto JC)

- Had one of the most prolific fall intrasquad seasons in LSU history, batting a team-high .432 with six homers in 37 at-bats
- Played two seasons at San Jacinto Junior College in Houston where he recorded 37 career home runs and 132 RBI
- Posted an eight-game hitting streak in early March, batting .379 (11-for-29) during the streak with two doubles, one homer and seven RBI

**Stavinoha's LSU Career Highs**

At-Bats: 5 (several occasions)  
Hits: 2 (several occasions)  
Runs Scored: 2 (twice)  
Doubles: 1 (twice)  
Triples: none  
Home Runs: 1 (three occasions)  
RBI: 2 (three occasions)  
Stolen Bases: 1 vs. Texas State (2/29/04)



**16**  
**Jon Zeringue**

Outfielder  
6-2, 205, R-R, Jr., 2L  
Thibodaux, La. (E.D. White HS)

- Outstanding 2003 second-team all-SEC performer who was the third-round selection of the Chicago White Sox in the 2001 major league draft
- A 2004 Baseball America second-team pre-season all-American
- Batting average has remained at .400 or better for 13 straight games
- 3-for-5 with 2 homers, 2 RBI and 3 runs at South Carolina (March 21)
- 3-for-4 vs. Houston (March 7) with one double, one triple, one homer, three RBI and two runs

**Zeringue's LSU Career Highs**

At-Bats: 6 at Vanderbilt (4/20/03)  
Hits: 4 (twice)  
Runs Scored: 4 vs. Baylor (6/8/03)  
Doubles: 2 (three occasions)  
Triples: 1 vs. Houston (March 7)  
Home Runs: 2 (twice)  
RBI: 4 (twice)  
Stolen Bases: 2 vs. SE Louisiana (4/23/03)

## LSU Lists of Note

### College World Series Championships

Southern California	12
<b>LSU</b>	<b>5</b>
Arizona State	5
Texas	5
Miami (Fla.)	4
Arizona	3
Cal State Fullerton	3
Minnesota	3
California	2
Michigan	2
Oklahoma	2
Stanford	2

### NCAA Tournament Winning Percentage

<b>LSU</b>	<b>.728 (99-37)</b>
Southern California	.723 (167-64)
Arizona State	.692 (119-53)
Miami (Fla.)	.684 (147-68)
Stanford	.677 (113-54)
Texas	.664 (182-92)

### CWS Winning Percentage

Southern California	74-26	.740
Minnesota	17-7	.708
<b>LSU</b>	<b>29-15</b>	<b>.659</b>
Arizona State	55-30	.647
Missouri	18-11	.621
Wichita State	16-11	.593
Stanford	38-27	.585
Texas	70-51	.579
Miami (Fla.)	44-32	.579
Cal State Fullerton	27-20	.574

### CWS Appearances

Texas	30
Southern California	21
Miami (Fla.)	20
Oklahoma State	19
Arizona State	18
Florida State	18
Stanford	15
Arizona	14
<b>LSU</b>	<b>12</b>
Cal State Fullerton	12

### Coaches' CWS Winning Percentage

Rod Dedeaux, Southern California	.789 (60-16)
Bobby Winkles, Arizona State	.762 (16-5)
Dick Siebert, Minnesota	.708 (17-7)
<b>Skip Bertman, LSU</b>	<b>.690 (29-13)</b>
Jerry Kindall, Arizona	.682 (15-7)
Augie Garrido, CS-Fullerton/Texas	.650 (26-14)
Jim Morris, Miami (Fla.)	.621 (18-11)
Toby Greene, Oklahoma State	.625 (15-9)
Hi Simmons, Missouri	.621 (18-11)
Jim Brock, Arizona State	.600 (36-24)
Cliff Gustafson, Texas	.595 (44-30)

### Coaches' CWS Victories

Rod Dedeaux, Southern California	60
Cliff Gustafson, Texas	44
Jim Brock, Arizona State	36
Mark Marquess, Stanford	34
<b>Skip Bertman, LSU</b>	<b>29</b>
Ron Fraser, Miami (Fla.)	26
Augie Garrido, CS-Fullerton/Texas	26

### Current Consecutive Regional Appearances

Miami (Fla.)	31 (1973-2003)
Florida State	26 (1978-2003)
Clemson	17 (1987-2003)
<b>LSU</b>	<b>15 (1989-2003)</b>
Cal State Fullerton	12 (1992-2003)
Stanford	10 (1994-2003)
Rice	9 (1995-2003)
South Alabama	9 (1995-2003)

### 2003 Major League Players

<b>LSU</b>	<b>16</b>
Southern California	14
UCLA	12
Cal State Fullerton	12
Stanford	12
Miami (Fla.)	11
Florida State	10
Georgia Tech	10
Pepperdine	9
Arizona State	8
Tennessee	8

### Draft Selections (1994-2003)

Arizona State	83
Miami (Fla.)	74
Cal State Fullerton	72
Long Beach State	66
Stanford	64
<b>LSU</b>	<b>63</b>
Texas A&M	63
Southern California	62
Rice	61
Wichita State	58

## LSU by the Numbers in 2004

Home	12-1
Away	6-2
Neutral Sites	0-0
Day	8-3
Night	10-0
On Jumbo Sports	4-1
On Cox Sports	0-0
On SEC-TV	0-0
Vs. SEC	2-1
Vs. SEC West	0-0
Vs. SEC East	2-1
Non-SEC Games	16-2
Vs. Louisiana opponents	6-0
Vs. Ranked opponents	1-0
Vs. Atlantic Sun	2-1
Vs. C-USA	3-1
Vs. Ohio Valley	3-0
Vs. Southland	7-0
Vs. Sun Belt	1-0
Vs. SWAC	0-0
Doubleheaders	0-0
Game 1 of weekend series	6-0
Game 2 of weekend series	4-2
Game 3 of weekend series	4-1
Sunday	4-1
Tuesday	4-0
Wednesday	0-0
Friday	6-0
Saturday	4-2
One-run games	2-1
Extra inning games	2-1
Shutouts	2-0
Games in which LSU scores first	10-2
Games in which opponent scores first	8-1
When LSU scores 10+	7-0
When LSU scores <5	2-0
When opponent scores 10+	0-2
When opponent scores <5	17-0
When LSU leads after 6 innings	16-0
When LSU trails after 6 innings	0-2
When tied after 6 innings	2-1
When LSU leads after 7 innings	17-0
When LSU trails after 7 innings	0-2
When tied after 7 innings	1-1
When LSU leads after 8 innings	16-0
When LSU trails after 8 innings	0-2
When tied after 8 innings	2-1
Vs. Right-handed starting pitcher	9-3
Vs. Left-handed starting pitcher	9-0
Starting Pitchers	17-1
Relievers	1-2
When LSU has 10+ hits	16-2
When LSU has <6 hits	0-0
When opponent has 10+ hits	4-3
When opponent has <6 hits	4-0
When LSU has more hits	15-0
When LSU has fewer hits	2-3
Equal hits	1-0
When LSU hits 3 or more home runs	4-0
When LSU hits no home runs	5-2
When opponent hits 3+ home runs	0-1
When opponent hits no home runs	12-0
Games won on final at-bat	2
Games lost on final at-bat	1
Come-from-behind wins	8
Losses when LSU led previously	2
Blown saves	0
Longest game	3:27 (at Central Florida, 2/15)
Shortest game(9 or more innings)	2:14 (at UL-Monroe, 3/9)



# Smoke Laval

HEAD COACH • THIRD YEAR

Raymond "Smoke" Laval enhanced his reputation as one of the country's top college baseball coaches, as, in just his second season at the helm of the LSU program, he guided the 2003 Tigers to the Southeastern Conference title -- LSU's first since 1997 -- and a berth in the College World Series.

Laval, the 2003 SEC Coach of the Year, directed LSU to a 45-22-1 overall record and a 20-9-1 conference mark, as the Tigers finished No. 5 in the final Baseball America rankings.

The magnificent '03 campaign augmented the success Laval enjoyed in his inaugural season as LSU's coach, as he led the 2002 Tigers to a 44-22 overall mark, an appearance in the NCAA Super Regional and a No. 11 final national ranking.

Laval, who served seven seasons (1994-2000) as the head coach at the University of Louisiana-Monroe, assumed control of the LSU program from Bertman, who led the Tigers to five NCAA championships and 11 College World Series appearances during an 18-year (1984-2001) tenure. Laval worked as Bertman's top assistant coach for 10 seasons (1984-93), helping lead LSU to its first two NCAA titles in 1991 and 1993. During Laval's 10 years as assistant coach, LSU posted a 483-182-1 record, won five SEC titles, appeared in six College World Series and captured two national championships.

Laval was known at LSU as one of the nation's best recruiters and brightest assistant coaches, as the Tigers reached the College World Series in only the third season (1986) of the Bertman-Laval regime. LSU followed the '86 CWS appearance with Omaha berths in 1987, 1989 and 1990 before the Tigers claimed the school's first baseball national title in 1991. After LSU captured its second NCAA crown in 1993, Laval departed Baton Rouge to become the head coach at Northeast Louisiana (now Louisiana-Monroe).

During his assistant coaching tenure at LSU, Laval -- who worked as the Tigers' primary recruiter - tutored 24 players who would eventually reach the major leagues. Some of the major leaguers with whom Laval worked include all-stars Albert Belle and Paul Byrd and first-round pick Todd Walker.

Laval compiled a 241-159 (.603) mark as the head coach at ULM, guiding the Indians to NCAA Regional appearances in 1995, 1999 and 2000.

Laval began his coaching career in 1977 as an assistant at Jacksonville University before moving to Wolfson High School in Jacksonville as a baseball and football coach. He served as a graduate assistant at LSU in 1979 under former Tiger head coach Jack Lamabe before working two years as an assistant at Gulf Coast Community College in Panama City, Fla.

Laval served as an assistant coach at Florida for two seasons (1982-83) before returning to LSU to work under Bertman.

Laval holds a bachelor's degree (1977) from Jacksonville in physical education and a master's degree (1979) from LSU in administration. The McDonald, Pa., native played two seasons at Gulf Coast Community College, where he lettered as a catcher. He completed his playing career at Jacksonville, where he led the ninth-ranked Dolphins in hitting at the 1976 NCAA South Regional.

Laval and his wife, Pam, are the parents of two children, Brandon and Jamie.

## Laval Year-By-Year

Year	W-L	School	Highlights
1994	20-33	UL-Monroe	Defeated Three NCAA Tournament Teams
1995	37-20	UL-Monroe	SLC Tournament Champions; NCAA Regional Participants
1996	41-19	UL-Monroe	School-Record 41 Wins; SLC Louisiana Division Champions
1997	33-21	UL-Monroe	Became Fourth Coach in ULM History To Record 100 Wins
1998	33-22	UL-Monroe	Led SLC In Hitting For Third Straight Season
1999	36-22	UL-Monroe	SLC Champions; NCAA Regional Participants
2000	41-22	UL-Monroe	SLC Champions; NCAA Regional Participants
2002	44-22	LSU	NCAA Regional Champions; NCAA Super Regional Participants
2003	45-22-1	LSU	SEC Champions; College World Series Participants
2004	18-3	LSU	

**Career Record (10th year):** 348-206-1

**LSU Record (3rd year):** 107-47-1

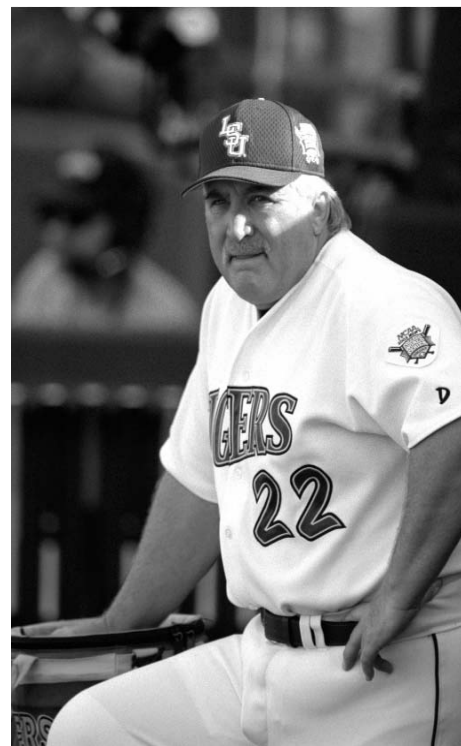
### COACHING HONORS

1995 Louisiana Sportswriters Association Coach of the Year

1999 Southland Conference Coach of the Year

2002 Louisiana Sportswriters Association Coach of the Year

2003 SEC Coach of the Year; Louisiana Sportswriters Association Coach of the Year



## The Laval File

**Full Name:** Raymond Peter Laval

**Born:** December 20, 1955

**Hometown:** McDonald, Pa.

**Wife:** Pam Lewis of Reserve, La.

**Children:** Jamie and Brandon

## Coaching Experience

1977	Assistant Coach	Jacksonville
1978	Assistant Coach	Wolfson HS (Jacksonville, Fla.)
1979	Graduate Assistant	LSU
1980-81	Assistant Coach	Gulf Coast CC
1982-83	Assistant Coach	Florida
1984-93	Assistant Coach	LSU
1994-2000	Head Coach	UL-Monroe
2001	Administrative Asst.	LSU
2002-	Head Coach	LSU

## Education

High School: South Fayette(McDonald, Pa.), 1973

College: Jacksonville, 1977 (physical education)

Masters: LSU, 1979 (administration)

## Playing Experience

1970-73: Catcher, South Fayette High School

1974-75: Catcher, Gulf Coast CC

1976-77: Catcher, Jacksonville University

## The Nickname "Smoke"

As a native of Western Pennsylvania, Raymond Peter Laval grew up as a Pittsburgh Pirates fan. He received the name "Smoke" in the late 1970s from his Gulf Coast Community College teammates, who derived the moniker from Smokey Burgess, a catcher for the Pirates in the 1960s.

# Media Services

## Interview Opportunities

### Head Coach Smoke Laval

Coach Laval is available for phone interviews on weekday mornings (9 a.m. -Noon) during the season. Please coordinate all requests for personal interviews with Coach Laval through his office. Appointments and interviews may be arranged through Virginia Robertson at (225) 578-4148. **Coach Laval will talk to reporters approximately 10 minutes after the end of a game in the LSU dugout.**

### Players

Media members are invited to attend LSU baseball practice sessions. Players are available for interviews before each practice at approximately 1 p.m. in Alex Box Stadium. Requests for live player interviews on the field prior to a game should be made through Bill Franques in the Sports Information Office.

**Post-game player interviews are conducted in front of the LSU dugout at the conclusion of a brief team meeting on the field.**

### Mailing Address

LSU Sports Information  
P.O. Box 25095  
Baton Rouge, LA 70894-5095

### Overnight Mail Address

Room 501, LSU Athletics Admin. Bldg.  
N. Stadium Dr. at Nicholson Dr.  
Baton Rouge, LA 70894-5095

### Phone Directory

Press Box: 225-578-4149  
Sports Information: 225-578-8226  
Fax: 225-578-1861  
Baseball Office: 225-578-4148  
Fax: 225-578-4066

### Baseball Contact E-mail Address

wfranqu@lsu.edu

## Who to Contact

### Sports Information Office

(225) 578-8226

### Baseball Contact

Bill Franques - wfranqu@lsu.edu

### Asst. Contact

Bill Martin - wmarti4@lsu.edu

### LSU Television

(225) 578-1797

### Asst. AD/Television

Kevin Wagner - jwagne2@lsu.edu

### Manager/Television

John Schiebe - jschiebe@lsu.edu

### LSU Radio

(225) 578-1882

### Asst. AD/Radio

Jim Hawthorne - Isuradio@lsu.edu

## On the Internet

### www.LSUports.net

The Official Website of LSU Athletics is home to all the baseball information you need.

Schedules, results, rosters, bios, statistics and game notes can be found and are always up to date.

### http://media.lsuports.net

Media can now access images for all LSU athletic teams, including action shots, heads shots, logos, etc. To gain access to the high-resolution pictures, email Bill Franques. You will be assigned a login and password that will enable you to retrieve pictures. This service is for the media use only.

## LSU Electronic Media

### Radio

The LSU Sports Radio Network will distribute all LSU Baseball games by satellite to 25 radio affiliates. WDGL-FM (98.1) Radio in Baton Rouge will serve as the flagship station for the LSU Sports Network. Jim Hawthorne, the "Voice of the Tigers" for all LSU sports, begins his 21st season of calling baseball play-by-play action. He will be joined on the broadcasts by Charles Hanagriff and LSU baseball publicist Bill Franques. Selected LSU Sports Network stations will also air "Tiger Sportsline with Smoke Laval" each Monday from 7-8 p.m., beginning on March 29. The show airs live from Superior Grill on Government Street in Baton Rouge.

### Television

Inside LSU Baseball is a weekly program featuring LSU head coach Smoke Laval. The first installment of the 2004 season will air March 21, and the show will air weekly through May 23. The show features game highlights, player profiles and in-depth stories on college baseball's No. 1 program. Inside LSU Baseball is produced by the LSU Electronic Media Department – Kevin Wagner, Executive Producer; John Schiebe, Associate Producer. Inside LSU Baseball Affiliates include WBRZ Channel 2 in Baton Rouge and Cox Cable Channel 4 in Baton Rouge.

Bill Franques  
wfranqu@lsu.edu

## Week 7: March 22-28

Bill Martin  
wmarti4@lsu.edu

MONDAY	22	TUESDAY	23	WEDNESDAY	24	THURSDAY	25	FRIDAY	26	SATURDAY	27	SUNDAY	28
		at Centenary 7 p.m. Fair Grounds Field Shreveport, La.  Radio: LSU Sports Network  TV: None						vs. Mississippi State 6:30 p.m. Alex Box Stadium Baton Rouge, La.  Radio: LSU Sports Network  TV: None		vs. Mississippi State 2 p.m. Alex Box Stadium Baton Rouge, La.  Radio: LSU Sports Network  TV: None		vs. Mississippi State 1 p.m. Alex Box Stadium Baton Rouge, La.  Radio: LSU Sports Network  TV: None	

LSU VS. CENTENARY