

Total Offense

MOST PLAYS

GAME:	99	vs. Tulane, 11/22/69
	98	vs. Tulane, 11/23/68
		vs. Wyoming, 12/2/78

SEASON:	883	2002 (4,550 total yards)
	882	1985 (4,284 total yards)
	872	1977 (4,542 total yards)
	862	2001 (5,418 total yards)
	860	1969 (4,089 total yards)

MOST YARDS GAINED

GAME:	746	vs. Rice, 9/24/77
	680	vs. Western Carolina, 9/2/00
	664	vs. Rice, 9/19/87

SEASON:	5,418	2001 (862 plays)
	4,843	1987 (747 plays)
	4,550	2002 (883 plays)
	4,544	1986 (800 plays)
	4,542	1977 (872 plays)

MOST YARDS GAINED PER PLAY

GAME:	10.06	vs. Rice, 9/19/87
SEASON:	6.7	1945
	6.3	2001

MOST YARDS GAINED PER GAME

SEASON:	451.5	2001
	440.3	1987
	413.0	1986
	412.9	1977

MOST TDS BY RUSHING AND PASSING

SEASON:	48	1982
	47	1977
	46	2001
	45	1997
	44	1969

Rushing

MOST RUSHES

GAME:	83	vs. Wyoming, 11/26/77 (487 yards)
	82	vs. Florida, 10/1/77 (385 yards)
	79	at Florida, 10/7/78 (315 yards)
SEASON:	675	1973
	674	1977 (3,352 yards)
	663	1976 (3,041 yards)

MOST YARDS GAINED

GAME:	503	vs. Oregon, 10/22/77 (69 att.)
	502	vs. Rice, 9/24/77 (72 att.)
	487	vs. Wyoming, 11/26/77 (83 att.)

SEASON:	3,352	1977 (674 att.)
	3,041	1976 (663 att.)
	2,823	1997 (521 att.)

MOST YARDS GAINED PER RUSH

GAME:	10.1	vs. Rice, 9/19/87 (43 for 436)
SEASON:	6.8	1945

MOST YARDS GAINED PER GAME

SEASON:	304.7	1977 (3,352 yards in 11 games)
	274.5	1976 (3,041 yards in 11 games)
	256.6	1997 (2,823 yards in 11 games)

MOST TOUCHDOWNS BY RUSHING

GAME:	8	vs. Tulane, 11/25/61
		at Kentucky, 11/1/97
SEASON:	35	1977
	34	1997
	33	1996
	30	1969
	29	1976



Garry James (33) scored LSU's second touchdown en route to a 23-3 win over Southern California at the Los Angeles Coliseum in 1984.

Passing

MOST PASSES ATTEMPTED

GAME:	69	vs. Auburn, 9/18/99 (33 comp.)
	56	at Tulane, 11/24/79 (26 comp.)
	52	vs. Florida, 10/7/95 (20 comp.)
SEASON:	411	2001 (238 comp.)
	405	1999 (200 comp.)
	366	1985 (220 comp.)
	353	2000 (183 comp.)
	340	1983 (194 comp.)
	339	1988 (182 comp.)

MOST PASSES COMPLETED

GAME:	35	at Alabama, 11/3/01 (44 att.)
	33	vs. Miss. State, 11/12/83 (51 att.)
		vs. Auburn, 9/18/99 (69 att.)
	31	at Notre Dame, 11/23/85 (42 att.)
		vs. Tennessee, 10/28/89 (51 att.)
SEASON:	238	2001 (411 att.)
	220	1985 (366 att.)
	207	1986 (335 att.)
	200	1999 (405 att.)
	188	1989 (327 att.)

HIGHEST PERCENTAGE OF PASSES COMPLETED

GAME:	(min. 10 att.)
	.846 at Tulane, 12/1/45 (11 of 13)
	.842 vs. Akron, 9/27/97 (16 of 19)
	(min. 20 att.)
	.821 vs. Western Carolina, 9/2/00 (23 of 28)
	.808 at Ole Miss, 10/31/81 (21 of 26)
	(min. 30 att.)
	.795 at Alabama, 11/3/01 (35 of 44)
	.738 at Notre Dame, 11/23/85 (31 of 42)

MOST PASSES ATTEMPTED WITHOUT AN INT.

GAME:	49	vs. Tennessee, 10/28/89
	44	vs. Miss. State, 11/16/91
	43	at Tennessee, 11/29/01
	40	at Ohio State, 9/24/88
	40	vs. Ole Miss, 10/31/98

MOST PASSES HAD INTERCEPTED

GAME:	6	vs. Tennessee, 11/4/39
		at Auburn, 9/17/94
SEASON:	25	1999
	21	1994
	19	(5 times) 1956, 1954, 1951, 1941, 1940

MOST YARDS GAINED

GAME:	528	at Alabama, 11/3/01
	485	vs. Western Carolina, 9/2/00
	456	vs. Rice, 9/23/95
	438	vs. Tennessee, 10/28/89
SEASON:	3,578	2001 (238 of 411)
	2,839	1989 (188 of 327)
	2,698	2000 (183 of 353)
	2,623	1986 (207 of 335)

MOST YARDS GAINED PER GAME

SEASON:	298.2	2001 (3,578 in 12 games)
	258.1	1989 (2,839 in 11 games)
	245.3	2000 (2,698 in 11 games)
	238.5	1986 (2,623 in 11 games)

MOST TOUCHDOWN PASSES

GAME:	7	vs. Ohio, 9/30/89
	5	vs. Tulane, 11/30/46
		vs. Rice, 9/24/77
		vs. Cal State Fullerton, 9/12/87
		vs. Akron, 9/27/97
		vs. Western Carolina, 9/2/00
SEASON:	26	1989
	21	1982
		1986
	20	1971

Team Records



Brian Kinchen's TD against Notre Dame in 1986 helped LSU to a 21-19 victory.

Scoring

MOST POINTS

GAME:	77	vs. Rice, 9/24/77
	70	vs. Arkansas State, 10/12/91
	66	vs. Wyoming, 11/26/77
	63	vs. Baylor, 10/4/69
		vs. New Mexico State, 9/28/96
		at Kentucky, 11/1/97
SEASON:	375	1977
	371	2001
	365	1982
	349	1969

MOST POINTS PER GAME

SEASON:	34.9	1969
	34.1	1977
	33.2	1982

MOST TOUCHDOWNS

GAME:	11	vs. Rice, 9/24/77
	9	several occasions
		(last at Kentucky, 11-1-97)
SEASON:	51	1977
	48	1997
	47	1969
		1982
		1998
		2001

MOST PATS BY KICKING

GAME:	11	vs. Rice, 9/24/77
	9	several occasions
SEASON:	47	1982
	43	1977
	42	1997
	41	1987
		2001

MOST FIELD GOALS

GAME:	4	at Kentucky, 10/21/78
		vs. Ole Miss, 11/1/86
		at Miss. State, 11/15/86
		at Georgia, 10/10/87
		at Auburn, 9/17/94
SEASON:	19	1986
		1988
		17 2002
		15 1990
		14 1978, 1983, 1987, 1989, 2001

Punting

MOST PUNTS

GAME:	17	vs. Miss. State, 11/9/40
		at Tennessee, 10/31/42
SEASON:	104	1941

MOST YARDS PUNTING

GAME:	664	vs. Miss. State, 11/9/40
SEASON:	4,010	1941

MOST YARDS PER PUNT

GAME:	(min. 5 punts)	
	53.2	at Miss. State, 9/13/97
		(5 for 266 yards)
	51.3	at Ole Miss, 11/9/57
		(7 for 359 yards)
	(min. 10 punts)	
	47.3	at Ole Miss, 10/29/60
		(10 for 473 yards)
SEASON:	46.0	1997 (54 for 2,486 yards)

Kickoff Returns

MOST RETURNS

GAME:	8	vs. Florida, 10/9/93 (166 yards)
		at Florida, 10/8/94 (141 yards)
	7	at Georgia Tech, 11/7/43
		at Alabama, 11/22/47
		vs. Ole Miss, 10/30/48
		at Vanderbilt, 11/6/48
		vs. Texas, 9/20/52
SEASON:	47	1989

MOST YARDS

GAME:	178	vs. Alabama, 11/5/83
SEASON:	1,179	1948 (46 returns)
	992	1992

Punt Returns

MOST RETURNS

GAME:	13	at Tulane, 11/27/37
SEASON:	72	1937

MOST YARDS RETURNED

GAME:	205	vs. Ole Miss, 12/5/70
SEASON:	1,004	1937

Miscellaneous

MOST FIRST DOWNS

GAME:	35	vs. Miss. State, 11/15/69
SEASON:	262	2001

MOST YARDS PENALIZED

GAME:	184	at Florida, 10/28/61
SEASON:	790	1989

MOST FUMBLES LOST

GAME:	6	vs. Rice, 10/5/51
		vs. Texas, 9/20/52
		vs. Georgia, 10/18/52
		at Rice, 9/28/74
SEASON:	29	1974

Total Defense

FEWEST YARDS ALLOWED

GAME:	26	vs. Mercer, 10/19/40
SEASON:	1,236	1937

FEWEST YARDS ALLOWED PER GAME

SEASON:	123.6	1937
----------------	-------	------

Rushing Defense

FEWEST YARDS ALLOWED

GAME:	-50	at Ole Miss, 10/30/82
	-43	vs. Mercer, 10/19/40
SEASON:	389	1969
	574	1970

FEWEST YARDS ALLOWED PER GAME

SEASON:	38.9	1969
	52.2	1970

Passing Defense

FEWEST YARDS ALLOWED

GAME:	0	vs. Florida, 9/26/37
		vs. Texas, 10/2/37
		vs. Auburn, 11/18/39
		vs. Louisiana Normal, 9/19/42
		vs. Ole Miss, 10/17/42
		vs. Texas Tech, 10/16/54
		at Alabama, 9/29/58 (at Mobile)
		vs. Ole Miss, 11/1/58
		vs. Alabama, 11/6/71
SEASON:	524	1959

FEWEST YARDS ALLOWED PER GAME

SEASON:	52.4	1959
----------------	------	------

MOST INTERCEPTIONS

GAME:	8	vs. Villanova, 11/24/51 (at Shreveport)
SEASON:	27	1984
		1986

MOST INTS. RETURNED FOR TDs

GAME:	3	vs. Arkansas State, 10/12/91
SEASON:	4	1991

Scoring Defense

FEWEST POINTS ALLOWED

GAME:	0	vs. many opponents
		most recent: vs. UL-Lafayette
		10/5/02 (48-0)
SEASON:	27	1937
	29	1959

FEWEST POINTS ALLOWED PER GAME

SEASON:	2.7	1937
----------------	-----	------

FEWEST TOUCHDOWNS ALLOWED

GAME:	0	vs. many opponents
		most recent: vs. UL-Lafayette,
		10/5/02 (48-0)
SEASON:	3	1959

MOST SHUTOUTS

SEASON:	6	1937
----------------	---	------

TEAM BOWL RECORDS

LSU

First Downs	32	vs. Illinois, '02 Sugar
Rushing Attempts	63	vs. Stanford (332 yards), '77 Sun
Rushing Yards	332	vs. Stanford (63 att.), '77 Sun
Passes Attempted:	53	vs. Illinois (31 comp.), '02 Sugar
Passes Completed:	31	vs. Illinois (53 att.), '02 Sugar
Completion Percentage	.727	vs. Arkansas (8 of 11), '66 Cotton
Passing Yards:	444	vs. Illinois (31 of 53), '02 Sugar
Passes Had Intercepted	5	vs. Nebraska, '85 Sugar
Touchdown Passes	3	vs. Iowa St., '71 Sun vs. South Carolina, '87 Gator vs. Georgia Tech, '00 Peach vs. Illinois, '02 Sugar
Total Offense Attempts	97	vs. Illinois (595 yards), '02 Sugar
Total Offense Yards	595	vs. Illinois (97 att.), '02 Sugar
Fumbles Lost	4	vs. Oklahoma, '50 Sugar vs. Florida St., '68 Peach
Total Turnovers	8	vs. Oklahoma (4 fumbles, 4 int.), '50 Sugar
Points in a Quarter	27	vs. Illinois (second quarter), '02 Sugar
Points in a Half	34	vs. Illinois (first half), '02 Sugar
Fewest Rushing Yards	-15	vs. Ole Miss (32 att.), '60 Sugar
Fewest Passing Yards	13	vs. Baylor (1 of 5), '63 Bluebonnet
Fewest Pass Attempts	5	vs. Baylor (1 comp.), '63 Bluebonnet
Fewest Passes Completed	1	vs. Baylor (5 att.), '63 Bluebonnet
Fewest Total Yards	74	vs. Ole Miss (-15 rush, 74 pass), '60 Sugar
Most points	47	vs. Illinois, '02 Sugar
Fewest points	0	vs. Santa Clara, '38 Sugar vs. Arkansas, '47 Cotton vs. Oklahoma, '50 Sugar vs. Mississippi St., '60 Sugar

Opponent

First Downs	27	by Baylor, '63 Bluebonnet
Rushing Attempts	64	by Clemson (168 yards), '59 Sugar
Rushing Yards	286	by Oklahoma, '50 Sugar
Passes Attempted	47	by South Carolina (28 comp.), '87 Gator
Most Passes Completed	28	by South Carolina (47 att.), '87 Gator
Completion Percentage	.703	by Baylor (26 of 37), '63 Bluebonnet
Passing Yards	348	by Michigan St. (22 of 44), '95 Independence
Passes Had Intercepted	5	by Texas A & M, '44 Orange
Touchdown Passes	3	Four times
Total Offense Attempts	91	by Baylor (489 yards), '85 Liberty
Total Offense Yards	489	by Baylor (91 att.), '85 Liberty
Fumbles Lost	4	by Oklahoma, '50 Sugar by Iowa St., '71 Sun by Nebraska, '83 Orange by Georgia Tech, '00 Peach
Total Turnovers	8	by Texas A & M (5 int., 3 fumbles), '44 Orange
Fewest Rushing Yards	-15	by Texas A & M (25 att.), '44 Orange
Fewest Passing Yards	0	by Arkansas (0 of 4), '47 Cotton
Fewest Passing Attempts	4	by Arkansas (0 comp.), '47 Cotton by Clemson (2 comp.), '59 Sugar by Arkansas (4 att.), '47 Cotton
Fewest Passes Completed	0	by Arkansas (54 rush, 0 pass), '47 Cotton
Fewest Total Yards	54	by Arkansas (54 rush, 0 pass), '47 Cotton
Most Points	35	by Oklahoma, '50 Sugar by Texas, '03 Cotton
Fewest Points	0	by Arkansas, '47 Cotton by Clemson, '59 Sugar by Texas, '63 Cotton

Combined (LSU and Opponent)

Most Points	81	vs. Illinois (LSU 47, Illinois 34), '02 Sugar
Fewest Points	0	vs. Arkansas (LSU 0, Ark. 0), '47 Cotton
Most Total Yards	958	vs. Illinois (LSU 595, Illinois 363), '02 Sugar
Fewest Total Yards	248	vs. Arkansas (LSU 158, S.C. 90), '38 Sugar

Individual Bowl Records

LSU

RUSHING

Rushing Attempts	34	Rondell Mealey (222 yds) vs. Notre Dame, '97 Independence
Rushing Yards	234	Kevin Faulk (25 att.) vs. Michigan St., '95 Independence
Yards Per Attempt	9.4	Kevin Faulk (25 for 234) vs. Michigan St., '95 Independence
Rushing Touchdowns	4	Domanick Davis vs. Illinois, '02 Sugar
Longest Rush	78	Rondell Mealey vs. Notre Dame, '97 Independence

PASSING

Pass Attempts	53	Rohan Davey (31 comp.) vs. Illinois, '02 Sugar
Pass Completions	31	Rohan Davey (53 att.) vs. Illinois, '02 Sugar
Completion Percentage	.700	Pat Screen (7 of 10) vs. Arkansas, '66 Cotton
Passing Yards	444	Rohan Davey (31 of 53) vs. Illinois, '02 Sugar
Passes Had Intercepted	4	Jeff Wickersham vs. Nebraska, '85 Sugar
Touchdown Passes	3	Bert Jones vs. Iowa St., '71 Sun Tommy Hodson vs. South Carolina, '87 Gator Rohan Davey vs. Georgia Tech, '00 Peach Rohan Davey vs. Illinois, '02 Sugar

RECEIVING

Pass Receptions	14	Josh Reed (239 yards) vs. Illinois, '02 Sugar
Receiving Yards	239	Josh Reed (14 rec.) vs. Illinois, '02 Sugar
Touchdown Receptions	3	Wendell Davis vs. South Carolina, '87 Gator
Longest Pass	77	Bert Jones to Andy Hamilton vs. Iowa St., '71 Sun

TOTAL OFFENSE

Attempts	56	Marcus Randall (271 yards) vs. Texas, '03 Cotton
Yards	427	Rohan Davey (54 att.) vs. Illinois, '02 Sugar
All Purpose Yards	271	Kevin Faulk (234 rush, 4 rec., 33 ret.) vs. Michigan St., '95 Independence

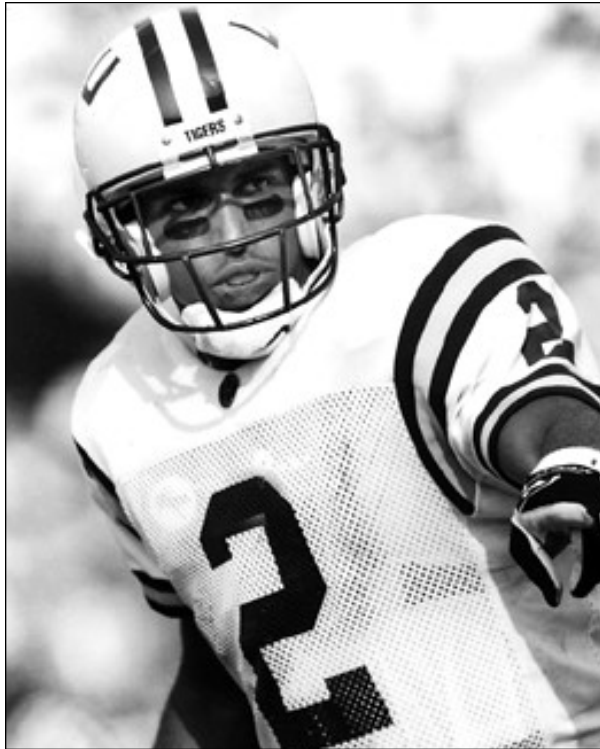


In the 2002 Sugar Bowl, Rohan Davey led a Tiger squad that broke or tied eight Sugar Bowl Records and broke or tied 13 LSU Bowl Records in the 47-34 win over No. 7 Illinois. The previous year Davey had an LSU bowl record three TD passes in the Tigers' 28-14 win over Georgia Tech in the Peach Bowl. He tied that mark in the 2002 Sugar Bowl.

SCORING

Points	24	Domanick Davis (4 TDs) vs. Illinois, '02 Sugar
Touchdowns	4	Domanick Davis (4 rush) vs. Illinois, '02 Sugar
Kicking Points	12	David Brownndyke (3 FGs, 3 PATs) vs. South Carolina, '87 Gator
Extra Points	6	Andre' Lafleur vs. Michigan St., '95 Independence
Field Goals	3	David Brownndyke vs. South Carolina, '87 Gator
Longest Field Goal	49	Juan Betanzos vs. Nebraska, '83 Orange

Bowl Records



Eddie Kennison set an LSU bowl record with a 92-yard kickoff return against Michigan State in the 1995 Independence Bowl.

INTERCEPTIONS

Interceptions	2	Benny Griffin (26 yards) vs. Wyoming, '68 Sugar Al Coffee (22 yards) vs. Nebraska, '71 Orange Liffort Hobley (15 yards) vs. Nebraska, '85 Sugar Greg Jackson (91 yards) vs. South Carolina, '87 Gator
Interception Yards	91	Greg Jackson (2 returns) vs. South Carolina, '87 Gator
Longest Interception	48	Greg Jackson vs. South Carolina, '87 Gator

PUNT RETURNS

Punt Returns	4	Sammy Grezaffi (61 yards) vs. Wyoming, '68 Sugar Craig Burns (40 yards) vs. Florida St., '68 Peach
Punt Return Yards	90	Domanick Davis (4 returns) vs. Texas, '03 Cotton
Longest Punt Return	79	Norman Jefferson vs. Baylor, '85 Liberty

KICKOFF RETURNS

Kickoff Returns	5	Harvey Williams (138 yards) vs. Nebraska, '87 Sugar
Kickoff Return Yards	138	Harvey Williams (5 returns) vs. Nebraska, '87 Sugar
Longest Kickoff Return	92	Eddie Kennison vs. Michigan St., '95 Independence

PUNTING

Punts	9	Jerry Stovall (376 yards) vs. Texas, '63 Cotton Gerald Brown (326 yards) vs. Syracuse, '65 Sugar Mitch Worley (280 yards) vs. Wyoming, '68 Sugar
Punting Average	48.7	Tommy Davis vs. Clemson, '59 Sugar
Longest Punt	65	Donnie Jones vs. Texas, '03 Cotton

Opponent

RUSHING

Rushing Attempts	29	Leon Heath (170 yards), Oklahoma, '50 Sugar
Rushing Yards	170	Leon Heath (29 att.), Oklahoma, '50 Sugar
Yards Per Carry	7.9	Harry Jones (10 for 79), Arkansas, '66 Cotton
Rushing Touchdowns	2	Four players
Longest Rush	86	Leon Heath, Oklahoma, '50 Sugar

PASSING

Passes Attempted	47	Todd Ellis (28 comp.), South Carolina, '87 Gator
Passes Completed	28	Todd Ellis (47 att.), South Carolina, '87 Gator
Completion Percentage	.750	Cody Carlson (9 of 12), Baylor, '85 Liberty
Passing Yards	348	Tony Banks (22 of 44), Michigan St., '95 Independence
Passes Had Intercepted	4	Todd Ellis, South Carolina, '87 Gator
Touchdown Passes	4	Kurt Kittner, Illinois, '02 Sugar

RECEIVING

Pass Receptions	11	James Ingram (163 yards), Baylor, '63 Bluebonnet
Receiving Yards	178	Walter Young (6 rec.), Illinois, '02 Sugar
Touchdown Receptions	2	Six players
Longest Pass	78	Tony Banks to Mushin Muhammed, Michigan St., '95 Independence

TOTAL OFFENSE

Plays	58	Todd Ellis, South Carolina, '87 Gator
Yards	320	Tony Banks, Michigan St., '95 Independence
All Purpose Yards	320	Tony Banks (348 pass, -28 rush), Michigan St., '95 Independence

SCORING

Points	12	Twelve players
Touchdowns	2	by many players
Kicking Points	7	Three players
Extra Points	5	Ken Tipps, Oklahoma, '50 Sugar
Field Goals	3	Scott Cengia, Notre Dame, '97 Independence
Longest Field Goal	49	Jerry DePoyster, Wyoming, '68 Sugar

INTERCEPTIONS

Interceptions	2	Chad Daffer, Nebraska, '85 Sugar David Holmes, Syracuse, '89 Hall of Fame
Interception Yards	59	Loren Schwening (1 ret.), Colorado, '62 Orange
Longest Interception	59	Loren Schwening, Colorado, '62 Orange

PUNT RETURNS

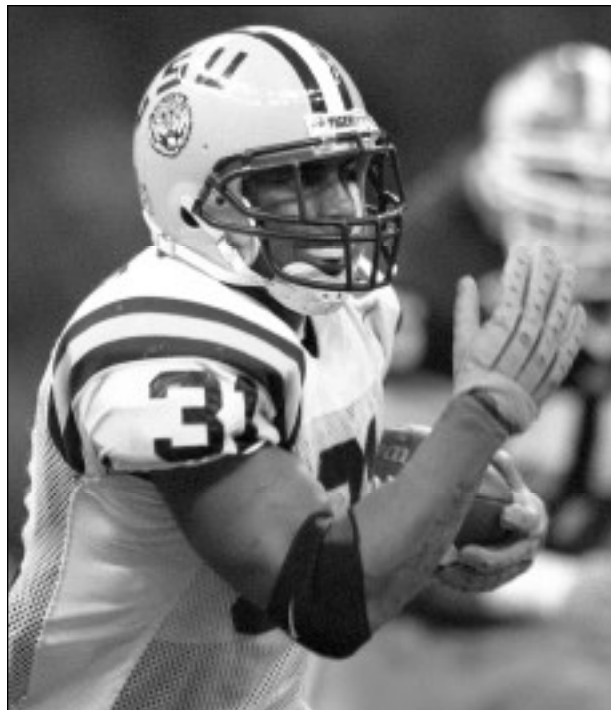
Punt Returns	5	Kelly Rhino (81 yards), Georgia Tech, '00 Peach
Punt Return Yards	81	Kelly Rhino (5 ret.), Georgia Tech, '00 Peach
Longest Punt Return	42	Irving Fryar, Nebraska, '83 Orange

KICKOFF RETURNS

Kickoff Returns	4	Four players
Kickoff Return Yards	132	Derrick Mason (4 ret.), Michigan St., '95 Independence
Longest Kickoff Return	100	Derrick Mason, Michigan St., '95 Independence

PUNTING

Punts	14	Sammy Baugh (672 yards), Texas Christian, '36 Sugar
Punting Average	49.0	Jerry DePoyster (4 for 196), Wyoming, '68 Sugar
Longest Punt	75	Stanley Turner, Texas A & M, '44 Cotton



Domanick Davis set LSU and Sugar Bowl records with four rushing touchdowns in the 2002 win against Illinois.

Rushing Leaders

YEAR	PLAYER	ATT.	YDS.	AVG.
1937	Young Bussey	97	371	3.8
1938	Jabbo Stell	78	277	3.6
1939	Charley Anastasio	79	287	3.6
1940	Adrian Dodson	142	556	3.9
1941	Walter Gorinski	88	280	3.2
1942	Alvin Dark	60	433	7.2
1943	Steve Van Buren	150	847	5.6
1944	Elwyn Rowan	69	288	4.2
1945	Gene Knight	85	667	7.8
1946	Gene Knight	95	473	5.0
1947	Rip Collins	73	315	4.3
1948	Rip Collins	58	277	4.4
1949	Billy Baggett	87	481	5.5
1950	Billy Baggett	119	778	6.5
1951	Leroy Labat	152	574	3.8
1952	Al Doggett	71	382	5.4
1953	Jerry Marchand	137	696	5.1
1954	Chuck Jons	88	408	4.6
1955	O.K. Ferguson	117	465	4.0
1956	Jimmy Taylor	117	552	4.7
1957	Jimmy Taylor	162	762	4.7
1958	Billy Cannon	115	686	5.9
1959	Billy Cannon	139	598	4.3
1960	Jerry Stovall	65	298	4.5
1961	Earl Gros	90	406	4.5
1962	Jerry Stovall	89	368	4.1
1963	Don Schwab	108	553	5.1
1964	Don Schwab	160	583	4.3
1965	Joe Labruzzo	103	509	4.9
1966	Jimmy Dousay	104	441	4.2
1967	Tommy Allen	106	535	5.0
1968	Kenny Newfield	85	441	5.2
1969	Eddie Ray	115	591	5.1
1970	Art Cantrelle	247	892	3.6
1971	Art Cantrelle	133	649	4.9
1972	Chris Dantin	165	707	4.3
1973	Brad Davis	173	904	5.2
1974	Brad Davis	169	701	4.1
1975	Terry Robiskie	214	765	3.6
1976	Terry Robiskie	224	1,117	5.0
1977	Charles Alexander	311	1,686	5.4
1978	Charles Alexander	281	1,172	4.2
1979	Hokie Gajan	134	568	4.2
1980	Jesse Myles	76	403	5.3
1981	Jesse Myles	72	202	4.1
1982	Dalton Hilliard	193	901	4.7
1983	Dalton Hilliard	177	747	4.2
1984	Dalton Hilliard	254	1,268	5.0
1985	Dalton Hilliard	258	1,134	4.4
1986	Harvey Williams	178	700	3.9
1987	Harvey Williams	154	1,001	6.5
1988	Eddie Fuller	153	647	4.2
1989	Eddie Fuller	140	649	4.6
1990	Harvey Williams	205	953	4.7
1991	Odell Beckham	81	397	4.9
1992	Robert Davis	123	527	4.3
1993	Jay Johnson	106	558	5.3
1994	Jermaine Sharp	135	750	5.6
1995	Kevin Faulk	174	852	4.9
1996	Kevin Faulk	248	1,282	5.2
1997	Kevin Faulk	205	1,144	5.6
1998	Kevin Faulk	229	1,279	5.6
1999	Rondell Mealey	170	637	3.7
2000	LaBrandon Toefield	165	682	4.1
2001	LaBrandon Toefield	230	992	4.3
2002	Domanick Davis	193	931	4.8

Passing Leaders

YEAR	PLAYER	ATT.	CMP.	YDS.	TD
1937	Young Bussey	78	35	712	8
1938	Young Bussey	52	18	285	1
1939	Leo Bird	77	35	574	7
1940	Leo Bird	55	20	246	2
1941	Leo Bird	76	27	358	3
1942	Alvin Dark	106	40	556	5
1943	Gene Knight	51	19	190	1
1944	Y.A. Tittle	62	36	552	3
1945	Y.A. Tittle	77	35	404	3
1946	Y.A. Tittle	92	45	780	13
1947	Y.A. Tittle	96	49	489	4
1948	Charlie Pevey	99	37	607	5
1949	Charlie Pevey	86	36	521	6
1950	Norm Stevens	108	42	551	4
1951	Jim Barton	75	29	417	1
1952	Norm Stevens	97	52	583	2
1953	Al Doggett	142	68	822	4
1954	Al Doggett	104	34	459	2
1955	M.C. Reynolds	115	51	660	6
1956	M.C. Reynolds	70	30	385	1
1957	Win Turner	41	16	231	2
1958	Warren Rabb	90	45	591	8
1959	Warren Rabb	65	33	422	4
1960	Lynn Amedee	67	31	438	4
1961	Lynn Amedee	94	40	485	2
1962	Lynn Amedee	63	24	457	2
1963	Pat Screen	38	22	194	1
1964	Pat Screen	99	55	561	1
1965	Nelson Stokley	50	32	468	3
1966	Fred Haynes	91	39	424	2
1967	Nelson Stokley	130	71	939	4
1968	Mike Hillman	118	64	787	5
1969	Mike Hillman	167	93	1,180	8
1970	Buddy Lee	138	73	1,162	6
1971	Bert Jones	119	66	945	9
1972	Bert Jones	199	103	1,446	14
1973	Mike Miley	107	60	978	7
1974	Billy Broussard	103	41	700	1
1975	Pat Lyons	168	72	457	4
1976	Pat Lyons	133	54	685	3
1977	Steve Ensminger	159	71	952	9
1978	David Woodley	153	79	995	3
1979	Steve Ensminger	174	80	1,168	5
1980	Alan Risher	143	82	971	9
1981	Alan Risher	238	150	1,780	5
1982	Alan Risher	234	149	1,834	17
1983	Jeff Wickersham	337	193	2,542	7
1984	Jeff Wickersham	312	178	2,165	12
1985	Jeff Wickersham	346	209	2,145	5
1986	Tommy Hodson	288	175	2,261	19
1987	Tommy Hodson	265	162	2,125	15
1988	Tommy Hodson	293	154	2,074	13
1989	Tommy Hodson	317	183	2,655	22
1990	Chad Loup	141	75	975	3
1991	Chad Loup	174	102	1,181	9
1992	Jamie Howard	200	101	1,349	5
1993	Jamie Howard	248	106	1,319	7
1994	Jamie Howard	274	140	1,997	13
1995	Jamie Howard	212	112	1,493	9
1996	Herb Tyler	187	109	1,688	7
1997	Herb Tyler	209	127	1,581	10
1998	Herb Tyler	250	153	2,018	18
1999	Josh Booty	333	162	1,830	7
2000	Josh Booty	290	145	2,121	17
2001	Rohan Davey	367	217	3,347	18
2002	Marcus Randall	181	87	1,173	7

Receiving Leaders

YEAR	PLAYER	NO.	YDS.	TD
1937	Ken Kavanaugh, Sr.	11	310	4
1938	Ken Kavanaugh, Sr.	17	294	5
1939	Ken Kavanaugh, Sr.	30	470	7
1940	Odell Weaver	7	139	1
1941	Dudley Pillow	16	214	2
1942	Jim McLeod	15	278	1
1943	Carroll Griffith	6	67	0
1944	Dan Sandifer	10	241	1
1945	Clyde Lindsey	11	147	0
1946	Sam Lyle	7	162	3
1947	Ray Bullock	12	188	2
1948	Abner Wimberly	10	197	2
1949	Sam Lyle	20	268	2
1950	Warren Virgets	25	455	3
1951	Warren Virgets	17	263	1
1952	Jim Mitchell	17	209	0
1953	Jerry Marchand	13	192	1
1954	Joe Tuminello	13	181	3
1955	Chuck Johns	14	217	3
1956	J.W. Brodnax	13	123	0
1957	Billy Cannon	11	199	1
1958	Johnny Robinson	16	235	3
1959	Johnny Robinson	16	181	4
1960	Jerry Stovall	12	114	0
1961	Wendell Harris	10	177	2
1962	Jerry Stovall	9	213	1
1963	Billy Truax	10	112	1
1964	Doug Moreau	33	391	4
1965	Doug Moreau	29	468	3
1966	Billy Masters	24	241	1
1967	Tommy Morel	28	404	3
1968	Tommy Morel	42	564	2
1969	Lonny Myles	43	559	4
1970	Andy Hamilton	39	870	6
1971	Andy Hamilton	45	854	9
1972	Gerald Keigley	27	433	7
1973	Brad Boyd	16	259	3
1974	Brad Boyd	18	275	2
1975	Carl Otis Trimble	16	177	2
1976	Carl Otis Trimble	14	211	2
1977	Carlos Carson	23	552	10
1978	Mike Quintela	30	352	1
1979	Carlos Carson	39	608	2
1980	Greg LaFleur	18	243	0
1981	Orlando McDaniel	41	719	2
1982	Eric Martin	45	817	7
1983	Eric Martin	52	1,064	5
1984	Eric Martin	47	668	2
1985	Garry James	50	414	0
1986	Wendell Davis	80	1,244	11
1987	Wendell Davis	72	993	7
1988	Tony Moss	55	957	6
1989	Tony Moss	59	934	9
1990	Todd Kinchen	34	660	3
1991	Todd Kinchen	53	855	5
1992	Wes Jacob	38	511	2
	Scott Ray	38	534	1
1993	Brett Bech	30	429	3
1994	Brett Bech	45	772	5
1995	Shedrick Wilson	60	845	6
1996	David LaFleur	30	439	3
1997	Larry Foster	43	579	4
1998	Larry Foster	56	722	4
1999	Jerel Myers	64	854	2
2000	Josh Reed	65	1,127	10
2001	Josh Reed	94	1,740	7
2002	Michael Clayton	57	749	5

Yearly Leaders

Scoring Leaders

YEAR	NAME, POS.	POINTS
1933	Abe Mickal, B	38
1934	Walter Sullivan, B	36
1935	Bill Crass, B	36
1936	Gaynell Tinsley, E	48
1937	Pinky Rohm, B;	54
	Jabbo Stell, B	54
1938	Ken Kavanaugh, Sr., E	31
1939	Ken Kavanaugh, Sr., E	54
1940	Adrian Dodson, B	42
1941	Sulcer Harris, B	36
1942	Walter Gorinski, B	36
1943	Steve Van Buren, B	98
1944	Elwyn Rowan, FB	18
1945	Gene Knight, FB	51
1946	Al Heroman, HB	30
1947	Zollie Toth, FB;	30
	Rip Collins, FB	30
1948	Six Players Tied	12
1949	Carroll Griffith, QB	39
1950	Ken Konz, HB	45
1951	Leroy Labat, HB	30
1952	Jerry Marchand, FB	42
1953	Jerry Marchand, FB	48
1954	Vince Gonzales, HB	24
	Chuck Jones, HB	24
1955	Vince Gonzales, HB	32
1956	Jimmy Taylor, FB	59
1957	Jimmy Taylor, FB	86
1958	Billy Cannon, FB	74
1959	Billy Cannon, HB	44
1960	Wendell Harris, HB	34
1961	Wendell Harris, HB	94
1962	Jerry Stovall, HB	66
1963	Donald Schwab, FB	36
1964	Doug Moreau, FB	73
1965	Doug Moreau, S	73
1966	Tommy Allen, TE	73
1967	Roy Hurd, K	73
1968	Mark Lumpkin, K	73
1969	Mark Lumpkin, K	73
1970	Mark Lumpkin, K	73
1971	Jay Michaelson, K	73
1972	Rusty Jackson, K	73
1973	Rusty Jackson, K	73
1974	Brad Davis, B	73
1975	Terry Robiskie, B	73
1976	Terry Robiskie, B	73
1977	Charles Alexander, K	73
1978	Charles Alexander, K	73
1979	Don Barthel, K	73
	David Woodley, K	73
1980	David Johnston, K	73
1981	David Johnston, K	73
1982	Dalton Hilliard, K	73
1983	Juan Betanzos, K	73
1984	Dalton Hilliard, K	73
1985	Dalton Hilliard, K	73
1986	Wendell Davis, K	73
1987	David Browndyke, K	73
1988	David Browndyke, K	73
1989	David Browndyke, K	73
1990	Pedro Suarez, PK	73
1991	Pedro Suarez, PK	73



Charles Alexander ranks second in LSU history in single-season scoring with 104 points in 1977.

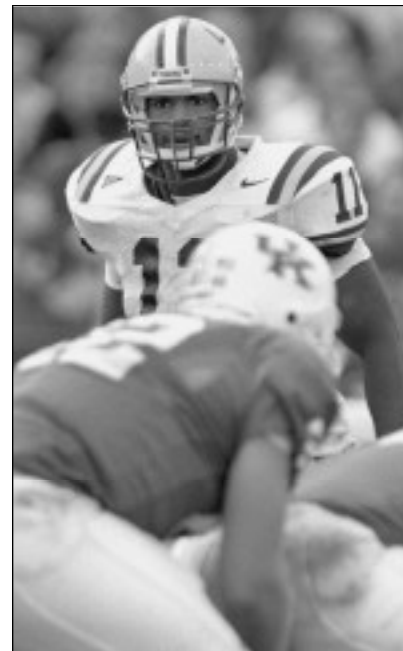
1992	Robert Toomer, FB	32
1993	André Lafleur, PK	59
1994	André Lafleur, PK	57
1995	André Lafleur, PK	73
1996	Kevin Faulk, TB	84
1997	Kevin Faulk, TB	90
1998	Kevin Faulk, TB	102
1999	Rondell Mealey, TB	54
2000	John Corbello, PK	63
2001	LaBrandon Toefield, TB	114
2002	John Corbello, PK	85



Andre Lafleur led scoring for three seasons from 1993-95.

Leading Tacklers (Since 1962)

YEAR	PLAYER	POSITION	TACKLES
1962	Dennis Gaubatz	Linebacker	59
1963	Robbie Hucklebridge	Guard	51
1964	Mike Vincent	Linebacker	60
1965	Mike Vincent	Linebacker	54
1966	George Bevan	Linebacker	81
1967	Benny Griffin	Linebacker	74
1968	Mike Anderson	Linebacker	89
1969	George Bevan	Linebacker	72
1970	Mike Anderson	Linebacker	74
1971	Ronnie Estay	Tackle	73
1972	Warren Capone	Linebacker	71
1973	Warren Capone	Linebacker	70
1974	Steve Cassidy	Tackle	79
1975	Steve Cassidy	Tackle	83
1976	Jon Streeete	Linebacker	74
	Dan Alexander	Tackle	74
1977	John Adams	End	62
1978	Lyman White	End	91
1979	Lyman White	End	109
1980	Al Richardson	Linebacker	129
1981	Al Richardson	Linebacker	150
1982	Lawrence Williams	Linebacker	123
1983	Shawn Burks	Linebacker	98
1984	Shawn Burks	Linebacker	108
1985	Shawn Burks	Linebacker	113
1986	Toby Caston	Linebacker	97
1987	Nicky Hazard	Linebacker	107
1988	Verge Ausberry	Linebacker	96
1989	Verge Ausberry	Linebacker	89
1990	Anthony Marshall	Safety	90
1991	Reggie Walker	Linebacker	108
1992	Anthony Williams	Linebacker	69
	David Walkup	Linebacker	69
1993	Ricardo Washington	Linebacker	76
1994	Rodney Young	Cornerback	80
1995	Allen Stansberry	Linebacker	109
1996	Allen Stansberry	Linebacker	95
1997	Joe Wesley	Linebacker	105
1998	Joe Wesley	Linebacker	93
1999	Ryan Clark	Safety	110
2000	Trev Faulk	Linebacker	113
2001	Trev Faulk	Linebacker	119
2002	Bradie James	Linebacker	154



With 154 tackles in 2002, Bradie James became LSU's single-season record holder.

Yearly Offensive Statistics

	GMS	PLAYS	YARDS	YPG	RUSHES	YARDS	YPG	YPC	TDS	ATTEMPTS	COMP.	YARDS	YPG	COMP.%	TDS	INTS.
2002	13	883	4,550	350.0	558	2,560	196.9	4.59	19	325	155	1,990	153.1	47.7	16	8
2001	12	862	5,418	451.5	451	1,840	153.3	4.08	28	411	238	3,578	298.2	57.9	18	12
2000	11	746	4,140	376.4	393	1,442	131.1	3.67	13	353	183	2,698	245.3	51.8	24	16
1999	11	713	3,319	301.7	308	907	82.5	2.94	13	405	200	2,412	219.3	49.4	11	25
1998	11	740	4,231	384.6	432	1,853	168.5	4.29	23	348	188	2,378	216.2	54.0	18	9
1997	11	746	4,517	410.6	521	2,823	256.6	5.42	34	225	137	1,694	154.0	60.9	11	7
1996	11	737	4,399	399.9	488	2,322	211.1	4.76	33	249	131	2,077	188.8	52.6	8	11
1995	11	727	3,924	356.7	410	1,635	148.6	3.99	18	317	175	2,289	208.1	55.2	14	8
1994	11	753	3,791	344.6	418	1,756	159.6	4.20	13	335	175	2,426	220.5	52.2	17	21
1993	11	759	3,451	313.7	418	1,449	131.7	3.47	12	341	161	2,002	182.0	47.2	9	16
1992	11	696	3,309	300.8	381	1,322	120.2	3.47	14	315	161	1,987	180.6	51.1	8	20
1991	11	711	3,561	323.7	396	1,710	155.5	4.32	10	315	174	2,147	195.2	55.2	14	13
1990	11	730	3,447	313.4	464	1,982	180.2	4.27	10	266	133	1,755	159.5	50.0	10	6
1989	11	728	4,293	390.3	401	1,454	132.2	3.63	10	327	188	2,839	258.1	57.5	26	12
1988	11	764	3,796	345.1	425	1,581	143.7	3.72	9	339	182	2,439	221.7	53.7	14	12
1987	11	747	4,843	440.3	436	2,289	208.1	5.25	24	311	187	2,554	232.2	60.1	18	10
1986	11	800	4,544	413.1	465	2,110	191.8	4.54	11	335	207	2,623	238.5	61.8	21	12
1985	11	882	4,284	389.5	516	2,405	218.6	4.66	22	366	220	2,267	206.1	60.1	6	10
1984	11	821	4,243	385.7	497	1,984	180.4	3.99	24	324	183	2,259	205.4	56.5	12	14
1983	11	788	4,129	375.4	448	1,583	143.9	3.53	22	340	194	2,546	231.5	57.1	7	18
1982	11	839	4,544	413.1	584	2,526	229.6	4.33	26	255	162	2,018	183.5	63.5	21	8
1981	11	763	3,403	309.4	496	1,493	135.7	3.01	26	267	163	1,910	173.6	61.0	6	12
1980	11	743	3,185	289.5	564	1,952	177.5	3.46	19	179	99	1,233	112.1	55.3	9	7
1979	11	791	3,919	356.3	496	1,858	168.9	3.75	26	295	137	2,061	187.4	46.4	7	14
1978	11	837	4,127	375.2	613	2,678	243.5	4.37	25	224	111	1,449	131.7	49.6	5	11
1977	11	872	4,542	412.9	674	3,352	304.7	4.97	35	198	85	1,190	108.2	42.9	12	6
1976	11	840	3,972	361.1	663	3,041	276.5	4.59	29	177	72	931	84.6	40.7	3	10
1975	11	771	3,001	272.8	575	1,935	175.9	3.37	15	196	83	1,066	96.9	42.3	4	17
1974	11	799	3,438	312.5	655	2,525	229.5	3.85	23	144	59	913	83.0	41.0	2	7
1973	11	818	3,832	348.4	675	2,622	238.4	3.88	21	143	76	1,210	110.0	53.1	9	13
1972	11	856	3,942	358.4	609	2,241	203.7	3.68	11	247	125	1,701	154.6	50.6	17	12
1971	11	832	4,263	387.5	590	2,501	227.4	4.24	21	242	123	1,762	160.2	50.8	20	11
1970	11	840	3,738	339.8	599	1,702	154.7	2.84	21	241	126	2,036	185.1	52.3	11	14
1969	10	860	4,089	408.9	591	2,202	220.2	3.73	30	269	139	1,887	188.7	51.7	14	13
1968	10	796	3,507	350.7	567	1,962	196.2	3.46	19	229	121	1,545	154.5	52.8	6	13
1967	10	741	3,605	360.5	554	2,361	236.1	4.26	27	187	95	1,244	124.4	50.8	6	9
1966	10	669	2,466	246.6	537	1,859	185.9	3.46	11	132	56	607	60.7	42.4	4	9
1965	10	645	3,073	307.3	497	2,077	207.7	4.18	23	148	73	996	99.6	49.3	8	9
1964	10	665	2,639	263.9	483	1,694	169.4	3.51	4	182	86	945	94.5	47.3	5	11
1963	10	612	2,499	249.9	518	2,087	208.7	4.03	16	94	42	412	41.2	44.7	2	8
1962	10	644	2,679	267.9	536	1,960	196.0	3.66	16	108	40	719	71.9	37.0	3	4
1961	10	636	2,900	290.0	516	2,196	219.6	4.26	23	120	52	704	70.4	43.3	4	6
1960	10	608	2,429	242.9	484	1,709	170.9	3.53	9	124	57	720	72.0	46.0	4	9
1959	10	641	2,600	260.0	510	1,866	186.6	3.66	15	131	59	734	73.4	45.0	8	9
1958	10	583	2,787	278.7	441	1,965	196.5	4.46	28	142	62	822	82.2	43.7	11	8
1957	10	570	2,447	244.7	477	1,936	193.6	4.06	16	93	34	511	51.1	36.6	3	8
1956	10	653	2,533	253.3	505	1,803	180.3	3.57	11	148	54	730	73.0	36.5	3	19
1955	10	655	2,516	251.6	491	1,670	167.0	3.40	9	164	65	846	84.6	39.6	8	18
1954	11	654	2,547	231.5	507	1,803	163.9	3.56	14	147	54	744	67.6	36.7	5	20
1953	11	693	2,933	266.6	518	2,059	187.2	3.97	21	175	77	874	79.5	44.0	5	14
1952	10	614	2,681	268.1	436	1,827	182.7	4.19	17	178	76	854	85.4	42.7	4	13
1951	11	794	2,962	269.3	602	1,977	179.7	3.28	15	192	79	985	89.5	41.1	2	19
1950	11	690	2,866	260.5	518	1,981	180.1	3.82	16	172	62	885	80.5	36.0	7	12

NOTE: Bowl games are not included in stats until 2002.

Yearly Defensive Statistics (Opponents vs. LSU Defense)

	GMS	PLAYS	YARDS	YPG	RUSHES	YARDS	YPG	YPC	TDS	ATTEMPTS	COMP.	YARDS	YPG	COMP.%	TDS	INTS.
2002	13	825	3,728	286.8	464	1,743	134.1	3.76	16	361	163	1,985	152.7	45.1	13	17
2001	12	832	4,752	396.0	375	1,399	116.6	3.73	9	457	261	3,353	279.4	57.1	25	18
2000	11	788	3,861	351.0	387	1,483	134.8	3.83	9	401	220	2,378	216.2	54.9	15	9
1999	11	800	3,840	349.1	452	1,675	152.3	3.71	18	200	188	2,165	196.8	94.0	11	17
1998	11	760	4,496	408.7	421	1,462	132.9	3.47	12	339	213	3,034	275.8	62.8	23	9
1997	11	788	3,821	347.4	384	1,274	115.8	3.32	13	404	203	2,547	231.5	50.2	11	14
1996	11	740	3,533	321.2	434	1,686	153.3	3.88	16	306	150	1,847	167.9	49.0	9	10
1995	11	789	3,398	308.9	446	1,491	135.5	3.34	11	343	158	1,907	173.4	46.1	8	13
1994	11	711	3,211	291.9	412	1,874	170.4	4.55	14	299	162	1,746	158.7	54.2	9	15
1993	11	734	4,353	395.7	434	2,149	195.4	4.95	20	300	176	2,204	200.4	58.7	20	13
1992	11	830	4,110	373.6	551	2,332	212.0	4.23	21	279	149	1,778	161.6	53.4	8	11
1991	11	789	4,229	384.5	548	2,676	243.3	4.88	22	241	125	1,782	162.0	51.9	11	11
1990	11	755	3,739	339.9	511	2,528	229.8	4.95	20	244	122	1,395	126.8	50.0	8	19
1989	11	800	4,172	379.3	504	2,166	196.9	4.30	23	296	173	2,006	182.4	58.4	5	14
1988	11	729	3,216	292.4	390	1,463	133.0	3.75	9	339	168	1,956	177.8	49.6	6	15
1987	11	749	3,530	320.9	439	1,726	156.9	3.93	8	310	169	1,804	164.0	54.5	9	11
1986	11	748	3,528	320.7	430	1,672	152.0	3.89	8	320	181	2,112	192.0	56.6	9	26
1985	11	751	3,336	303.3	388	1,428	129.8	3.68	6	363	185	2,158	196.2	51.0	6	20
1984	11	842	3,812	346.5	483	1,771	161.0	3.67	12	359	178	2,041	185.5	49.6	7	27
1983	11	751	3,589	326.3	489	1,863	169.4	3.81	19	262	145	1,726	156.9	55.3	11	16
1982	11	704	2,707	246.1	406	1,004	91.3	2.47	6	298	157	1,703	154.8	52.7	12	13
1981	11	762	3,698	336.2	561	2,096	190.5	3.74	26	201	105	1,602	145.6	52.2	16	11
1980	11	763	3,067	278.8	537	1,925	175.0	3.58	16	226	91	1,142	103.8	40.3	7	15
1979	11	793	3,336	303.3	528	1,784	162.2	3.38	7	265	120	1,552	141.1	45.3	10	14
1978	11	749	3,122	283.8	492	1,570	142.7	3.19	9	257	114	1,552	141.1	44.4	8	20
1977	11	735	3,504	318.5	504	2,024	184.0	4.02	15	231	105	1,480	134.5	45.5	7	15
1976	11	702	2,564	233.1	504	1,568	142.5	3.11	11	198	82	996	90.5	41.4	6	13
1975	11	771	3,121	283.7	558	1,919	174.5	3.44	13	213	89	1,202	109.3	41.8	10	13
1974	11	728	2,934	266.7	555	1,960	178.2	3.53	13	173	75	974	88.5	43.4	5	6
1973	11	662	3,021	274.6	460	1,554	141.3	3.38	10	202	91	1,467	133.4	45.0	9	14
1972	11	674	2,853	259.4	462	1,561	141.9	3.38	9	212	91	1,292	117.5	42.9	3	15
1971	11	695	2,798	254.4	472	1,690	153.6	3.58	12	223	101	1,108	100.7	45.3	4	17
1970	11	746	2,689	244.5	356	574	52.2	1.61	2	390	187	2,115	192.3	47.9	8	25
1969	10	714	2,802	280.2	353	906	90.6	2.57	5	361	166	1,896	189.6	46.0	8	18
1968	10	693	2,779	277.9	401	1,096	109.6	2.73	6	292	134	1,683	168.3	45.9	10	13
1967	10	683	2,777	277.7	459	1,460	146.0	3.18	8	224	109	1,317	131.7	48.7	6	10
1966	10	611	2,306	230.6	398	1,077	107.7	2.71	8	213	105	1,229	122.9	49.3	6	11
1965	10	628	2,452	245.2	373	997	99.7	2.67	12	255	126	1,455	145.5	49.4	8	16
1964	10	532	1,757	175.7	390	1,068	106.8	2.74	6	142	61	689	68.9	43.0	2	9
1963	10	575	2,163	216.3	404	1,013	101.3	2.51	-	171	91	1,150	115.0	53.2	-	9
1962	10	579	2,062	206.2	349	832	83.2	2.38	-	230	114	1,230	123.0	49.6	-	14
1961	10	564	1,703	170.3	386	794	79.4	2.06	-	178	81	909	90.9	45.5	-	18
1960	10	581	1,979	197.9	434	1,199	119.9	2.76	-	147	62	780	78.0	42.2	-	17
1959	10	625	1,432	143.2	456	908	90.8	1.99	-	169	56	524	52.4	33.1	-	13
1958	10	623	1,914	191.4	460	1,131	113.1	2.46	5	163	69	783	78.3	42.3	3	16

NOTE: Bowl games are not included in stats until 2002.

NCAA RECORD HOLDERS



PUNTING - NCAA RECORD
Chad Kessler

HIGHEST AVERAGE PER PUNT - SEASON (MIN. 36-39 PUNTS)
1997, 50.3, 1997 (39 for 1,961)



TOTAL KICK RETURNS - NCAA RECORD
Pinky Rohm

MOST TOUCHDOWNS SCORED ON KICK RETURNS - SEASON
5 1937, (3 punts, 2 kickoffs)
(tied with Robert Woods, Grambling, 1997)

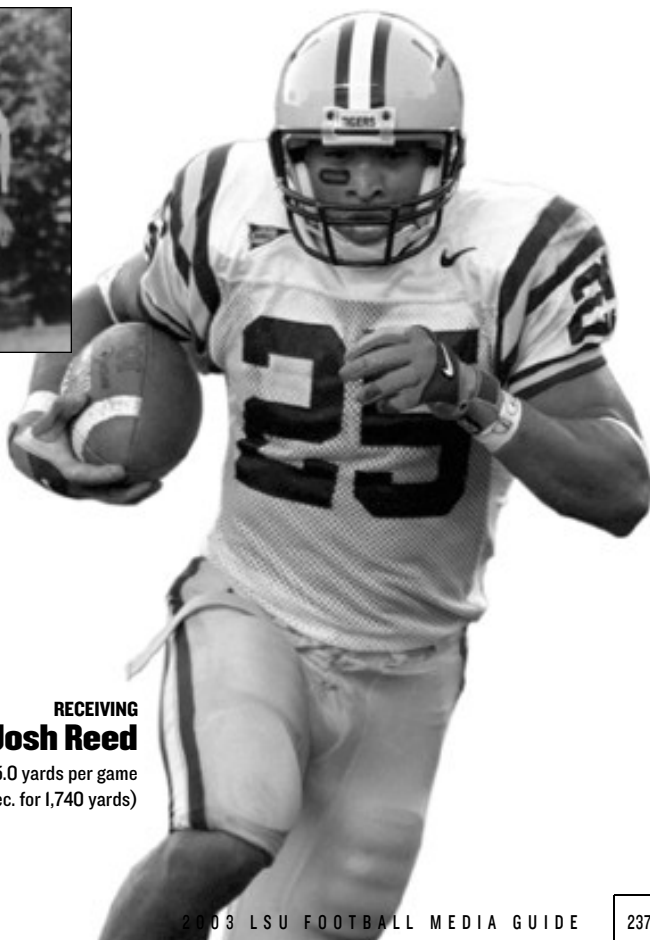
NCAA Annual Leaders from LSU



RECEIVING
Ken Kavanaugh
1939, 30 catches (467 yards)



SCORING
Steve Van Buren
1943, 98 points (14 TDs, 14 PAT)



RECEIVING
Josh Reed
2002, 145.0 yards per game
(94 rec. for 1,740 yards)



FIELD GOALS
Doug Moreau
1964, .650 (13 of 20)



Kevin Faulk



LaBrandon Toefield

Southeastern Conference Record Holders

RUSHING

- ▶ **YARDS PER RUSH - GAME (MIN. 10 RUSHES)**
19.6 Harvey Williams, vs. Rice, 1987 (196 on 10 att)
- ▶ **ALL-PURPOSE YARDS - SEASON**
2,109 Kevin Faulk, 1998 (1,279 rush, 287 rec., 265 PR, 278 KOR)
- ▶ **ALL-PURPOSE YARDS - SEASON AVERAGE**
191.7 Kevin Faulk, 1998 (2,109 in 11 games)
- ▶ **ALL-PURPOSE YARDS - CAREER**
6,833 Kevin Faulk, 1995-98 (4,557 rush, 600 rec., 832 PR, 844 KOR)

RECEIVING

- ▶ **RECEIVING YARDS - CAREER**
3,001 Josh Reed, 1999-2001 (167 for 3,001)
- ▶ **RECEIVING YARDS - SEASON**
1,740 Josh Reed, 2001 (94 for 1,740)
- ▶ **RECEIVING YARDS - GAME**
293 Josh Reed vs. Alabama, 2001
- ▶ **RECEPTIONS - GAME**
19 Josh Reed vs. Alabama, 2001
- ▶ **YARD PER GAME**
145.0 Josh Reed, 2001 (94 for 1,740)
- ▶ **YARDS PER CATCH - SEASON (MIN. 50 CATCHES)**
20.5 Eric Martin, 1983 (52 for 1,064)
- ▶ **YARDS PER CATCH - SEASON (MIN. 75 CATCHES)**
18.5 Josh Reed, 2001 (94 for 1,740)
- ▶ **TOUCHDOWN CATCHES - GAME**
5 Carlos Carson vs. Rice, 1977
- ▶ **TOTAL YARDS - GAME**
540 Rohan Davey vs. Alabama, 2001 (12 rush, 528 pass)

SCORING

- ▶ **RUSHING TOUCHDOWNS - SEASON**
19 LaBrandon Toefield, 2001
- ▶ **FIELD GOAL PERCENTAGE - SEASON (MIN. 10 MADE)**
100.0 David Browndyke, 1989 (14 of 14)
- ▶ **MOST POINTS BY NON-KICKER - CAREER**
318 Kevin Faulk, 1995-98 (46 rush, 4 rec, 2 PR, 1 KOR)

PUNTING

- ▶ **PUNTING AVERAGE - SEASON (MIN. 30 PUNTS)**
50.3 Chad Kessler, 1997 (39 for 1,961)

PUNT RETURNS

- ▶ **PUNT RETURN TOUCHDOWNS - GAME**
2 Tommy Casanova, vs. Ole Miss, 1970 (tied with 3 others)
- ▶ **PUNT RETURN TOUCHDOWNS - SEASON**
3 Pinky Rohm, 1937 (tied with 4 others)

TOTAL KICK RETURNS

- ▶ **KICK RETURN TOUCHDOWNS - SEASON**
5 Pinky Rohm, 1937 (3 punts, 2 kickoffs)

SEC Annual Leaders from LSU

RUSHING

- (Based on per game average beginning in 1970)
- 1953 Jerry Marchand, 696 yards (137 att.)
 - 1957 Jimmy Taylor, 767 yards (162 att.)
 - 1958 Billy Cannon, 686 (115 att.)
 - 1964 Don Schwab, 683 (160 att.)
 - 1976 Terry Robiskie, 101.5 (1,117 on 224 att.)
 - 1977 Charles Alexander, 153.3 (1,686 on 311 att.)
 - 1997 Kevin Faulk, 127.1 (1,144 on 205 att.)
 - 1998 Kevin Faulk, 116.3 (1,279 on 229 att.)

PASSING EFFICIENCY

- 1971 Bert Jones, 141.43 (119 att, 66 cmp, 945 yds)
- 1972 Bert Jones, 129.00 (199 att, 103 cmp, 1,446 yds)
- 1982 Alan Risher, 146.00 (234 att, 149 cmp, 1,834 yds)
- 1986 Tommy Hodson, 142.90 (288 att, 175 cmp, 2,261 yds)
- 1989 Tommy Hodson, 143.41 (317 att, 183 cmp, 2,655 yds)

RECEIVING

- (Based on receptions per game beginning in 1970)
- 1986 Wendell Davis, 7.3 (80 rec. for 1,244 yds)
 - 1987 Wendell Davis, 6.6 (72 rec. for 993 yards)
 - 1991 Todd Kinchen, 4.8 (53 rec. for 855 yards)
 - 2001 Josh Reed, 7.83 (94 rec. for 1,740 yards)

TOTAL OFFENSE

- (Based on average yards per game beginning in 1970)
- 1977 Charles Alexander, 162.1 (1,783 yards in 11 games)
 - 1989 Tommy Hodson, 236.7 (2,604 yards in 11 games)

SCORING

- (Based on points per game beginning in 1970)
- 1938 Pinky Rohm, 54 points
 - 1943 Steve Van Buren, 98 points
 - 1956 Jimmy Taylor, 59 points
 - 1957 Jimmy Taylor, 86 points
 - 1958 Billy Cannon, 74 points
 - 1961 Wendell Harris, 94 points
 - 1964 Doug Moreau, 73 points
 - 1976 Terry Robiskie, 6.5 (72 points)
 - 1977 Charles Alexander, 9.5 (104 points)
 - 1997 Kevin Faulk, 10.0 (90 points)
 - 1998 Kevin Faulk, 9.27 (102 points)

PUNTING

- 1948 Rip Collins, 41.3
- 1967 Eddie Ray, 42.8
- 1987 Matt DeFrank, 41.6
- 1989 Rene' Bourgeois, 43.9
- 1995 Chad Kessler, 44.1
- 1997 Chad Kessler, 50.3
- 1999 Corey Gibbs, 43.0



Todd Kinchen



Harvey Williams

Individual Records

POINTS SCORED

GAME:34 by Tom Dutton vs. Tulane (11-28-12)
SEASON:125 by G.E.(Doc) Fenton (1908)
CAREER:269 by G.E.(Doc) Fenton (1907-1909)

TOUCHDOWNS

GAME:6 by Tom Dutton vs. Tulane (11-28-12)
SEASON:15 by L.H.(Dutch) Dupont (1913)
CAREER:36 by G.E.(Doc) Fenton (1907-1909)

TOUCHDOWNS BY RECEIVING

GAME:3 by Gaynell Tinsley vs. Tulane (11-28-36)
SEASON:NOT AVAILABLE
CAREER:NOT AVAILABLE

PATS BY KICKING

GAME:10 by O.W. McNeese vs.Millsaps (11-11-00)
SEASON:36 by G.E.(Doc) Fenton (1908)
CAREER:NOT AVAILABLE

CONSECUTIVE PATS BY KICKING

GAME:8 by G.E.(Doc) Fenton vs.Baylor (11-30-07)
SEASON:NOT AVAILABLE
CAREER:18 by Abe Mickal (1933-34)

FIELD GOALS

GAME:NOT AVAILABLE
SEASON:6 by G.E.(Doc) Fenton (1908)
CAREER:NOT AVAILABLE

LONGEST PLAYS

TOUCHDOWN BY RUSHING: 94 yards by Jesse Fatherree vs. Georgia (11-16-35)
TOUCHDOWN BY PUNT RETURN: 100 yards by Jesse Fatherree (opponent unavailable,1935); by Mike Lally (opponent unavailable,1908)
FIELD GOAL: 45 yards by G.E.(Doc) Fenton (opponent unavailable,1908); by H.E.Landry (opponent unavailable,1902)
PUNT: 93 yards (73 yards in the air) by Bill Pitcher (opponent unavailable, 1924)

Team Records

POINTS SCORED

GAME:93 vs.Southwestern Louisiana (11-21-36)
SEASON:442 (1908)

TOUCHDOWNS

GAME:15 vs.Baylor (11-10-08)

TOUCHDOWNS BY RUSHING

GAME:11 vs.Southwestern Louisiana (11-21-36)
SEASON:NOT AVAILABLE

PATS BY KICKING

GAME:10 vs.Millsaps (11-11-00)
SEASON:36 (1908)

RUSHING YARDS

GAME:726 vs. Tulane (12-14-98)
SEASON:NOT AVAILABLE

POINTS ALLOWED

GAME:0 vs.many, most recent vs. Tulane (11-28-36)
SEASON:11 (1908)

TOUCHDOWNS ALLOWED

GAME:0 vs.many, most recent vs. Tulane (11-28-36)
SEASON:1 (1908)

THE 1908 PERFECT SEASON

G. Ellwood "Doc" Fenton

G. Ellwood "Doc" Fenton, nicknamed "Kandy Kid" was one of the early great players in LSU football history and a leader on the Tigers' first truly great football team that went 10-0 in 1908.

Coached by Edgar R. Wingard (below), the Tigers were dubbed the "point a minute" team as they ran up 442 points in 450 minutes of play.

Fenton's exploits, including 125 points scored, led LSU to the 1908 championship of the Southern Intercollegiate Association.



Edgar R. Wingard coached LSU to an undefeated season in 1908.

Yearly Records

The Southeastern Conference, of which LSU is a charter member, was founded in 1933. Since that time, LSU has fashioned a 234-184-22 (.556) record against the league schools, for the conference's fourth-highest all time winning percentage. From 1923-32, LSU was affiliated with the 22-member Southern Intercollegiate Conference (SIC) and posted an 18-21-3 (.464) record. Prior to 1923, the Tigers were members of the much larger Southern Intercollegiate Athletic Association (SIAA) and logged a 37-38-5 (.494) record.

SEASON	OVERALL			CONFERENCE				PCT.	COACH	HIGHLIGHTS	
	W	L	T	PCT.	W	L	T				
1893	0	1	0	.000	0	1	0	.000	C.E Coates		
1894	2	1	0	.667	0	1	0	.000	A.P. Simmons		
1895	3	0	0	1.000	2	0	0	1.000	A.P. Simmons	First Undefeated Season	
1896	6	0	0	1.000	3	0	0	1.000	A.W. Jeardeau	SIAA Co-Champion	
1897	1	1	0	.500	0	0	0	---	A.W. Jeardeau		
1898	1	0	0	1.000	1	0	0	1.000	E.A. Chavanne		
1899	1	4	0	.250	1	2	0	.333	J.P. Gregg		
1900	2	2	0	.500	0	1	0	.000	E.A. Chavanne		
1901	5	1	0	.834	2	1	0	.667	W.S. Borland		
1902	6	1	0	.857	4	1	0	.800	W.S. Borland	SIAA Co-Champion	
1903	4	5	0	.445	0	4	0	.000	W.S. Borland		
1904	3	4	0	.429	1	2	0	.333	D.A.Killian		
1905	3	0	0	1.000	2	0	0	1.000	D.A.Killian		
1906	2	2	2	.500	0	1	1	.000	D.A.Killian		
1907	7	3	0	.700	2	1	0	.667	Edgar R. Wingard		
1908	10	0	0	1.000	2	0	0	1.000	Edgar R. Wingard	SIAA Champion,First 10-Win Season	
1909	6	2	0	.750	3	1	0	.750	J.G.Pritchard/J.W. Mayhew		
1910	1	5	0	.167	0	3	0	.000	J.W. Mayhew		
1911	6	3	0	.667	1	1	0	.500	J.K.Dwyer		
1912	4	3	0	.571	1	3	0	.250	J.K.Dwyer		
1913	6	1	2	.857	1	1	1	.500	J.K.Dwyer		
1914	4	4	1	.500	0	1	1	.000	E.T. McDonald		
1915	6	2	0	.750	3	1	0	.750	E.T. McDonald		
1916	7	1	2	.785	2	1	1	.667	E.T. McDonald/I.R.Pray/D.X.Bible		
1917	3	5	0	.375	1	3	0	.275	W. Sutton		
1918					No Games, World War I						
1919	6	2	0	.750	2	2	0	.500	Irving R.Pray		
1920	5	3	1	.625	0	3	0	.000	Branch Bocock		
1921	6	1	1	.857	2	1	1	.667	Branch Bocock		
1922	3	7	0	.300	1	2	0	.333	Irving R.Pray		
1923	3	5	1	.375	0	3	0	.000	Mike Donahue		
1924	5	4	0	.556	0	3	0	.000	Mike Donahue		
1925	5	3	1	.625	0	2	1	.000	Mike Donahue		
1926	6	3	0	.667	3	3	0	.500	Mike Donahue		
1927	4	4	1	.500	2	3	1	.400	Mike Donahue		
1928	6	2	1	.750	3	1	1	.750	Russ Cohen		
1929	6	3	0	.667	3	1	0	.750	Russ Cohen		
1930	6	4	0	.600	2	3	0	.400	Russ Cohen		
1931	5	4	0	.556	2	2	0	.500	Russ Cohen		
1932	6	3	1	.667	3	0	0	1.000	Biff Jones	SIC Co-Champion	
1933	7	0	3	.850	3	0	2	.800	Biff Jones		
1934	7	2	2	.800	4	2	0	.667	Biff Jones		
1935	9	2	0	.818	5	0	0	1.000	Bernie Moore	SEC Champion,Sugar Bowl	
1936	9	1	1	.864	6	0	0	1.000	Bernie Moore	SEC Champion,Sugar Bowl	
1937	9	2	0	.818	5	1	0	.833	Bernie Moore	Sugar Bowl	
1938	6	4	0	.600	2	4	0	.333	Bernie Moore		
1939	4	5	0	.444	1	5	0	.167	Bernie Moore		
1940	6	4	0	.600	3	3	0	.500	Bernie Moore		
1941	4	4	2	.500	2	2	2	.500	Bernie Moore		
1942	7	3	0	.700	3	2	0	.600	Bernie Moore		
1943	6	3	0	.667	2	2	0	.500	Bernie Moore	Orange Bowl	
1944	2	5	1	.313	2	3	1	.417	Bernie Moore		
1945	7	2	0	.778	5	2	0	.714	Bernie Moore		
1946	9	1	1	.864	5	1	0	.833	Bernie Moore	Cotton Bowl	
1947	5	3	1	.611	2	3	1	.417	Bernie Moore		
1948	3	7	0	.300	1	5	0	.167	Gaynell Tinsley		
1949	8	3	0	.727	4	2	0	.667	Gaynell Tinsley	Sugar Bowl	
1950	4	5	2	.455	2	3	2	.429	Gaynell Tinsley		
1951	7	3	1	.682	4	2	1	.643	Gaynell Tinsley		
1952	3	7	0	.300	2	5	0	.286	Gaynell Tinsley		
1953	5	3	3	.590	2	3	3	.438	Gaynell Tinsley		
1954	5	6	0	.455	2	5	0	.286	Gaynell Tinsley		
1955	3	5	2	.400	2	3	1	.417	Paul Dietzel		
1956	3	7	0	.300	1	5	0	.167	Paul Dietzel		
1957	5	5	0	.500	4	4	0	.500	Paul Dietzel		
1958	11	0	0	1.000	6	0	0	1.000	Paul Dietzel	SEC & National Champion,Sugar Bowl	
1959	9	2	0	.818	5	1	0	.833	Paul Dietzel	Sugar Bowl	

Yearly Records/Milestones

SEASON	OVERALL			CONFERENCE				COACH	HIGHLIGHTS	
	W	L	T	PCT.	W	L	T			PCT.
1960	5	4	1	.550	2	3	1	.417	Paul Dietzel	
1961	10	1	0	.909	6	0	0	1.000	Paul Dietzel	SEC Co-Champion, Orange Bowl
1962	9	1	1	.864	5	1	0	.833	Charles McClendon	Cotton Bowl
1963	7	4	0	.636	4	2	0	.667	Charles McClendon	Bluebonnet Bowl
1964	8	2	1	.772	4	2	1	.643	Charles McClendon	Sugar Bowl
1965	8	3	0	.727	3	3	0	.500	Charles McClendon	Cotton Bowl
1966	5	4	1	.550	3	3	0	.500	Charles McClendon	
1967	7	3	1	.682	3	2	1	.583	Charles McClendon	Sugar Bowl
1968	8	3	0	.727	4	2	0	.667	Charles McClendon	Peach Bowl
1969	9	1	0	.900	4	1	0	.800	Charles McClendon	
1970	9	3	0	.750	5	0	0	1.000	Charles McClendon	SEC Champion, Orange Bowl
1971	9	3	0	.750	3	2	0	.600	Charles McClendon	Sun Bowl
1972	9	2	1	.792	4	1	1	.750	Charles McClendon	Astro-Bluebonnet Bowl
1973	9	3	0	.750	5	1	0	.833	Charles McClendon	Orange Bowl
1974	5	5	1	.500	2	4	0	.250	Charles McClendon	
1975	5	6	0	.454	2	4	0	.250	Charles McClendon	
1976	7	3	1	.682	3	3	0	.500	Charles McClendon	
1977	8	4	0	.667	4	2	0	.667	Charles McClendon	Sun Bowl
1978	8	4	0	.667	3	3	0	.500	Charles McClendon	Liberty Bowl
1979	7	5	0	.583	4	2	0	.667	Charles McClendon	Tangerine Bowl
1980	7	4	0	.636	4	2	0	.667	Jerry Stovall	
1981	3	7	1	.318	1	4	1	.250	Jerry Stovall	
1982	8	3	1	.708	4	1	1	.750	Jerry Stovall	Orange Bowl
1983	4	7	0	.364	0	6	0	.000	Jerry Stovall	
1984	8	3	1	.708	4	1	1	.750	Bill Arnsparger	Sugar Bowl
1985	9	2	1	.792	4	1	1	.750	Bill Arnsparger	Liberty Bowl
1986	9	3	0	.750	5	1	0	.833	Bill Arnsparger	SEC Champion, USF&G Sugar Bowl
1987	10	1	1	.875	5	1	0	.833	Mike Archer	Mazda Gator Bowl
1988	8	4	0	.667	6	1	0	.857	Mike Archer	SEC Co-Champion, Hall of Fame Bowl
1989	4	7	0	.364	2	5	0	.286	Mike Archer	
1990	5	6	0	.455	2	5	0	.286	Mike Archer	
1991	5	6	0	.455	3	4	0	.429	Curley Hallman	
1992	2	9	0	.182	1	7	0	.125	Curley Hallman	
1993	5	6	0	.455	3	5	0	.375	Curley Hallman	
1994	4	7	0	.364	3	5	0	.375	Curley Hallman	
1995	7	4	1	.625	4	3	1	.563	Gerry DiNardo	Independence Bowl
1996	10	2	0	.833	6	2	0	.750	Gerry DiNardo	SEC West Co-Champion, Peach Bowl
1997	9	3	0	.750	6	2	0	.750	Gerry DiNardo	SEC West Co-Champion, Independence Bowl
1998	4	7	0	.364	2	6	0	.250	Gerry DiNardo	
1999	3	8	0	.273	1	7	0	.125	Gerry DiNardo/Hal Hunter	
2000	8	4	0	.667	5	3	0	.625	Nick Saban	Peach Bowl
2001	10	3	0	.769	5	3	0	.625	Nick Saban	SEC Champions, Sugar Bowl
2002	8	5	0	.615	5	3	0	.625	Nick Saban	Cotton Bowl
				SIAA	37	38	5	.494	1893-1922	3 SIAAC CHAMPIONSHIPS
				SIC	18	21	3	.464	1923-1932	1 SICC CHAMPIONSHIP
				SEC	234	184	22	.556	1933-PRESENT	7 SEC CHAMPIONSHIPS
TOTALS	636	368	47	.627	289	244	30	.542	1893-PRESENT	34 BOWL APPEARANCES

MILESTONES

FIRSTS AND LASTS

First Game:1893 vs. Tulane (L, 34-0) at New Orleans
 First Victory:1894 vs. Natchez AC (W, 36-0) at Natchez, Miss.
 First Loss:1893 vs. Tulane (L, 34-0) at New Orleans
 First Perfect Season:1895, record was 3-0-0
 Last Perfect Season:1958, record was 11-0 (NATIONAL CHAMPION)
 First Bowl Game:Jan. 1, 1936 (Sugar Bowl) vs. TCU (L, 3-2)
at New Orleans
 Last Bowl Game:Jan. 1, 2003 (Cotton Bowl) vs. Texas (L, 35-20)
at Dallas, Texas (Fox)
 First TV Game:Jan. 1, 1959 (Sugar Bowl) vs. Clemson (W, 7-0)
at New Orleans (NBC)
 Last TV Game:Jan. 1, 2003 (Cotton Bowl) vs. Texas (L, 35-20)
at Dallas, Texas (Fox)

GAMES

50th Game:1904 vs. Shreveport AC (L, 16-0) at Shreveport, La.
 100th Game:1911 vs. Louisiana Normal (W, 46-0) at Baton Rouge
 200th Game:1923 vs. Miss. State (L, 14-7) at Starkville, Miss.
 300th Game:1934 vs. George Washington (W, 6-0)
at Washington, D.C.
 400th Game:1944 vs. Georgia (W, 15-7) at Atlanta
 500th Game:1954 vs. Georgia Tech (L, 30-20) at Atlanta
 600th Game:1963 vs. Miss. State (L, 7-6) at Jackson, Miss.
 700th Game:1972 vs. Miss. State (W, 28-14) at Baton Rouge
 800th Game:1981 vs. Florida (L, 24-10) at Baton Rouge
 900th Game:1989 vs. Tulane (W, 27-7) at New Orleans
 1000th Game:1988 vs. Alabama (L, 22-16) at Baton Rouge

VICTORIES

1st Win:1894 vs. Natchez AC (36-0) at Natchez, Miss.
 50th Win:1908 vs. Southwestern (Tenn.) (55-0) at Baton Rouge
 100th Win:1919 vs. Southwestern La. (39-0) at Baton Rouge
 150th Win:1929 vs. Southwestern La. (58-0) at Baton Rouge
 200th Win:1936 vs. Miss. State (12-0) at Baton Rouge
 250th Win:1945 vs. Georgia (32-0) at Athens, Ga.
 300th Win:1954 vs. Florida (20-7) at Baton Rouge
 350th Win:1962 vs. Texas A&M (21-0) at Baton Rouge
 400th Win:1968 vs. Tulane (34-10) at New Orleans
 450th Win:1974 vs. Tulane (24-22) at Baton Rouge
 500th Win:1982 vs. Kentucky (34-10) at Lexington, Ky.
 550th Win:1988 vs. Alabama (19-18) at Tuscaloosa, Ala.
 600th Win:1997 vs. Kentucky (63-28) at Lexington, Ky.
 636th Win:2002 vs. Ole Miss, (14-13) at Baton Rouge

LOSSES

50th Loss:1917 vs. Miss. State (0-9) at Baton Rouge
 100th Loss:1934 vs. Tulane (12-13) at Baton Rouge
 150th Loss:1950 vs. Oklahoma (Sugar Bowl) (0-35) at New Orleans
 200th Loss:1963 vs. Rice (12-21) at Houston, Texas
 250th Loss:1977 vs. Stanford (Sun Bowl) (14-24) at El Paso, Texas
 300th Loss:1990 vs. Florida (8-34) at Gainesville, Fla.
 368th Loss:2003 vs. Texas (Cotton Bowl) (20-35) at Dallas, Texa

vs. All Opponents

OPPONENT	SERIES RECORD	FIRST, LAST GAME
Akron	1-0-0	1997
Alabama	18-43-5	1895, 2002
Alabama-Birmingham	0-1-0	2000
Arizona	1-0-0	1984
Arkansas	29-17-2	1901, 2002
Arkansas State	2-0-0	1991, 1998
Army	0-1-0	1931
Auburn	19-17-1	1901, 2002
Baylor	8-3-0	1907, 1985
Boston College	2-0-0	1947, 1953
Cal State Fullerton	1-0-0	1987
Centenary	3-1-1	1895, 1933
Chattanooga	1-0-0	1954
Cincinnati	0-1-0	1897
Citadel	1-0-0	2002
Clemson	2-0-0	1959, 1996
Colorado	5-1-0	1962, 1980
Colorado State	1-1-0	1985, 1992
Cumberland	0-1-0	1903
Duke	1-1-0	1929, 1958
East Carolina	1-0-0	1985
Florida	20-26-3	1937, 2002
Florida State	2-7-0	1968, 1991
Fordham	2-0-0	1942, 1946
George Washington	1-0-0	1934
Georgia	12-9-1	1928, 1999
Georgia Tech	6-12-0	1915, 2000
Hardin-Simmons	1-0-0	1958
Haskell	1-1-0	1908, 1914
Havana University	1-0-0	1907
Holy Cross	2-1-0	1939, 1941
Houston	2-1-0	1996, 2000
Howard	1-0-0	1907
Idaho	1-0-0	1998
Illinois	1-0-0	2002
Indiana	2-1-0	1924, 1978
Iowa State	1-0-0	1971
Jefferson College	6-0-0	1913, 1920
Kansas State	1-0-0	1980
Kentucky	37-15-1	1949, 2002
Louisiana College	2-0-0	1928, 1929
Louisiana-Lafayette	20-0-0	1902, 2002
Louisiana-Monroe	First Meeting	
La. Normal (NW State)	10-0-0	1911, 1942
Louisiana Tech	15-1-0	1901, 1941
Loyola (New Orleans)	4-1-0	1922, 1939
Manhattan	1-0-0	1935
Maryland	0-3-0	1951, 1955
Mercer	1-0-0	1940
Miami (Fl.)	8-3-0	1946, 1988
Miami (Ohio)	2-1-0	1986, 2002
Michigan State	1-0-0	1995
Middle Tennessee	1-0-0	2001
Millsaps	2-1-0	1900, 1933
Mississippi	50-37-4	1894, 2002
Mississippi College	9-0-1	1910, 1923
Mississippi State	60-33-3 *	1896, 2002
Missouri	0-1-0	1978
Nebraska	0-5-1	1971, 1987
New Mexico State	1-0-0	1996

OPPONENT	SERIES RECORD	FIRST, LAST GAME
North Carolina	5-1-0	1948,1986
Notre Dame	4-5-0	1970,1998
North Texas	2-0-0	1995,1999
Ohio	1-0-0	1989,1989
Ohio State	0-1-1	1987
Oklahoma	0-1-0	1950
Oklahoma State	1-0-0	1956
Oregon	2-1-0	1932,1977
Oregon State	3-0-0	1976,1982
Pacific	3-0-0	1950,1972
Penn State	0-1-0	1974
Rice	37-13-5	1915,1995
Rutgers	0-1-0	1922
San Jose State	1-0-0	1999
Santa Clara	0-2-0	1937,1938
Sewanee	3-6-0	1899,1932
SMU	0-1-1	1922,1934
South Carolina	13-2-1	1930, 2002
S.D. Wesleyan	1-0-0	1930
Southeastern Louisiana	1-0-0	1949
Southern Cal	1-1-0	1979,1984
Southern Mississippi	1-1-0	1951,1994
Southwestern (Tenn.)	1-0-0	1908
Southwestern Texas	1-0-0	1911
Spring Hill	8-0-0	1920,1932
Stanford	0-1-0	1977
Syracuse	1-1-0	1965,1989
TCU	5-2-1	1931,1968
Tennessee	5-19-3	1925,2001
Texas	7-9-1	1896,2003
Texas A&M	26-20-3	1899,1995
Texas-El Paso	1-0-0	1997
Texas Tech	2-0-0	1954,1957
Transylvania	1-0-0	1909
Tulane	65-22-7	1893,2001
Utah	2-0-0	1974,1976
Utah State	2-0-0	1993,2001
Vanderbilt	18-7-1	1902,1997
Virginia Tech	0-1-0	2002
Wake Forest	3-0-0	1960,1979
Washington	1-0-0	1983
Western Carolina	1-0-0	2000
Western Illinois	First Meeting	
Wichita State	1-0-0	1984
Wisconsin	2-0-0	1971,1972
Wyoming	3-0-0	1968,1978

***-1975 and 1976 games forfeited to LSU by NCAA
2003 Opponents in BOLD**

LSU's all-time record is 636-368-47. In addition to each of the opponents listed above, LSU has fashioned an 18-4 record against a group of opponents consisting of military and club teams, which balances the all time won-lost record with the aforementioned total.