

**2004 Schedule/Results (46-17, 18-12)**

Date	Opponent	Time/Result
<b>February</b>		
13 (Fri.)	at Central Florida	W, 4-3 (10)
14 (Sat.)	at Central Florida	W, 17-4
15 (Sun.)	at Central Florida	L, 5-6 (10)
17 (Tue.)	UL-MONROE	W, 7-1
20 (Fri.)	JACKSONVILLE STATE	W, 6-1
21 (Sat.)	JACKSONVILLE STATE	W, 14-2
22 (Sun.)	JACKSONVILLE STATE	W, 19-1 (7)
27 (Fri.)	TEXAS STATE	W, 10-1
28 (Sat.)	TEXAS STATE	W, 2-1
29 (Sun.)	TEXAS STATE	W, 13-2
<b>March</b>		
2 (Tue.)	#8 Tulane	W, 6-0 #
5 (Fri.)	HOUSTON	W, 9-3
6 (Sat.)	HOUSTON	L, 5-10
7 (Sun.)	HOUSTON	W, 8-2
9 (Tue.)	at UL-Monroe	W, 6-1
12 (Fri.)	SOUTHEASTERN LA.	W, 7-1
13 (Sat.)	SOUTHEASTERN LA.	W, 5-1
16 (Tue.)	NEW ORLEANS	W, 14-0 (7)
19 (Fri.)	at #3 South Carolina	W, 6-3 (11)
20 (Sat.)	at #3 South Carolina	L, 5-12
21 (Sun.)	at #3 South Carolina	W, 12-7
23 (Tue.)	at Centenary	W, 9-3
26 (Fri.)	#24 MISSISSIPPI STATE	L, 3-7
27 (Sat.)	#24 MISSISSIPPI STATE	W, 11-6
28 (Sun.)	#24 MISSISSIPPI STATE	W, 14-3
30 (Tue.)	at New Orleans	W, 12-5
<b>April</b>		
2 (Fri.)	at #11 Auburn	L, 6-7 (10)
3 (Sat.)	at #11 Auburn	W, 5-3
4 (Sun.)	at #11 Auburn	W, 3-2
6 (Tue.)	#12 TULANE	L, 0-1
9 (Fri.)	ARKANSAS	L, 8-11
10 (Sat.)	ARKANSAS	L, 10-11 (10)
11 (Sun.)	ARKANSAS	L, 5-7
13 (Tue.)	NICHOLLS STATE	W, 9-3
14 (Wed.)	Southeastern La.	W, 9-3
16 (Fri.)	GEORGIA	W, 6-5 (10)
17 (Sat.)	GEORGIA	W, 10-2
18 (Sun.)	GEORGIA	L, 4-12
20 (Tue.)	at Southern	W, 21-10
23 (Fri.)	at #10 Tennessee	L, 6-8
24 (Sat.)	at #10 Tennessee	W, 11-5
25 (Sun.)	at #10 Tennessee	W, 11-1
27 (Tue.)	#13 Tulane	W, 9-5
30 (Fri.)	ALABAMA	L, 2-8
<b>May</b>		
2 (Sun.)	ALABAMA	W, 2-1 (8)
2 (Sun.)	ALABAMA	W, 9-2 (7)
7 (Fri.)	at Kentucky	L, 3-10
8 (Sat.)	at Kentucky	W, 11-8
9 (Sun.)	at Kentucky	W, 15-4
15 (Sat.)	VANDERBILT	W, 3-2 (10)
15 (Sat.)	VANDERBILT	W, 7-6 (11)
16 (Sun.)	VANDERBILT	L, 0-8
19 (Wed.)	SOUTHEASTERN LA.	W, 16-2 (8)
21 (Fri.)	at # 9 Ole Miss	L, 6-7
22 (Sat.)	at # 9 Ole Miss	W, 11-4
23 (Sun.)	at # 9 Ole Miss	W, 14-6
26 (Wed.)	* #21 Florida	L, 4-5 (10)
27 (Thu.)	* #10 Georgia	L, 0-1
<b>June</b>		
4 (Fri.)	& ARMY	W, 9-0
5 (Sat.)	& #21 SOUTHERN MISS	W, 6-2
6 (Sun.)	& COLL. OF CHARLESTON	W, 11-3
12 (Sat.)	% #14 TEXAS A&M	W, 11-8
13 (Sun.)	% #14 TEXAS A&M	W, 4-0
19 (Sat.)	vs. Miami (Fla.)	6 p.m.

# - Zephyr Field (Metairie, La.) \$ - Louisiana Superdome  
 \* - SEC Tournament & - NCAA Baton Rouge Regional  
 % - NCAA Baton Rouge Super Regional  
 ^ - College World Series



# LSU BASEBALL

2004

## NCAA College World Series

June 18-28 • Rosenblatt Stadium • Omaha, Neb.



### Tigers Return to Omaha for Chance at Sixth Title

The LSU Tigers (46-17) travel to Omaha, Neb., this week to participate in the 58th College World Series at Johnny Rosenblatt Stadium. LSU opens CWS play at 6 p.m. Saturday versus the Miami Hurricanes.

LSU advanced to the CWS with five straight victories in NCAA Tournament play. The Tigers swept three games in the Baton Rouge Regional over Army (9-0), Southern Mississippi (6-2) and College of Charleston (11-3) before posting consecutive victories over Texas A&M (11-8, 4-0) in the NCAA Super Regional at LSU's Alex Box Stadium.

LSU is making its 13th appearance in the College World Series in the past 19 seasons. The Tigers have made previous Omaha trips in 1986, '87, '89, '90, '91, '93, '94, '96, '97, '98, 2000 and 2003. LSU has won CWS titles in 1991, 1993, 1996, 1997 and 2000. The Tigers' cumulative CWS record is 29-15 in their previous 12 appearances in Omaha.

The 2004 Tigers' 46 wins are the most by an LSU club since 2000, when the CWS champions posted a 52-15 mark. The '04 team posted a 41-15 regular-season record, the best regular-season mark for an LSU squad since the 1998 club was also 41-15 entering post-season play.

Third-year LSU coach Smoke Laval, the 2003 SEC Coach of the Year, has guided the Tigers to the CWS for the second straight year. Laval was an LSU assistant coach under Skip Bertman for 10 seasons (1984-93) and helped lead the Tigers to their first two national titles in 1991 and 1993.

### Starting Pitchers (Rotation To Be Determined)

### Relief Pitchers

### Position Starters

## LSU Lists of Note

### College World Series Championships

Southern California	12
<b>LSU</b>	<b>5</b>
Arizona State	5
Texas	5
Miami (Fla.)	4
Arizona	3
Cal State Fullerton	3
Minnesota	3
California	2
Michigan	2
Oklahoma	2
Stanford	2

### NCAA Tournament Winning Percentage

<b>LSU</b>	<b>.738 (104-37)</b>
Southern California	.723 (167-64)
Miami (Fla.)	.691 (152-68)
Arizona State	.686 (120-55)
Stanford	.673 (115-56)
Texas	.670 (187-92)

### CWS Winning Percentage

Southern California	74-26	.740
Minnesota	17-7	.708
<b>LSU</b>	<b>29-15</b>	<b>.659</b>
Arizona State	55-30	.647
Missouri	18-11	.621
Wichita State	16-11	.593
Stanford	38-27	.585
Texas	70-51	.579
Miami (Fla.)	44-32	.579
Cal State Fullerton	27-20	.574

### CWS Appearances

Texas	31
Southern California	21
Miami (Fla.)	21
Oklahoma State	19
Arizona State	18
Florida State	18
Stanford	15
Arizona	15
<b>LSU</b>	<b>13</b>
Cal State Fullerton	13

### Coaches' CWS Winning Percentage

Rod Dedeaux, Southern California	.789 (60-16)
Bobby Winkles, Arizona State	.762 (16-5)
Dick Siebert, Minnesota	.708 (17-7)
<b>Skip Bertman, LSU</b>	<b>.690 (29-13)</b>
Jerry Kindall, Arizona	.682 (15-7)
Augie Garrido, CS-Fullerton/Texas	.650 (26-14)
Jim Morris, Miami (Fla.)	.621 (18-11)
Toby Greene, Oklahoma State	.625 (15-9)
Hi Simmons, Missouri	.621 (18-11)
Jim Brock, Arizona State	.600 (36-24)
Cliff Gustafson, Texas	.595 (44-30)

### Coaches' CWS Victories

Rod Dedeaux, Southern California	60
Cliff Gustafson, Texas	44
Jim Brock, Arizona State	36
Mark Marquess, Stanford	34
<b>Skip Bertman, LSU</b>	<b>29</b>
Ron Fraser, Miami (Fla.)	26
Augie Garrido, CS-Fullerton/Texas	26

### Current Consecutive Regional Appearances

Miami (Fla.)	32 (1973-2004)
Florida State	27 (1978-2004)
Clemson	18 (1987-2004)
<b>LSU</b>	<b>16 (1989-2004)</b>
Cal State Fullerton	13 (1992-2004)
Stanford	11 (1994-2004)
Rice	10 (1995-2004)

### 2003 Major League Players

<b>LSU</b>	<b>16</b>
Southern California	14
UCLA	12
Cal State Fullerton	12
Stanford	12
Miami (Fla.)	11
Florida State	10
Georgia Tech	10
Pepperdine	9
Arizona State	8
Tennessee	8

### Draft Selections (1994-2003)

Arizona State	83
Miami (Fla.)	74
Cal State Fullerton	72
Long Beach State	66
Stanford	64
<b>LSU</b>	<b>63</b>
Texas A&M	63
Southern California	62
Rice	61
Wichita State	58

### SEC Championships

<b>LSU</b>	<b>13</b>
Alabama	13
Mississippi State	10
Florida	9
Auburn	6
Ole Miss	6
Georgia	5
Vanderbilt	3
Tennessee	3
Arkansas	2
South Carolina	2

### SEC Tournament Championships

Alabama	7
<b>LSU</b>	<b>6</b>
Mississippi State	5
Florida	5
Auburn	3
Tennessee	3
Ole Miss	1
South Carolina	1
Vanderbilt	1

## LSU by the Numbers in 2004

Home	27-9
Away	17-6
Neutral Sites	2-2
Day	26-9
Night	20-7
On Jumbo Sports	9-1
On Cox Sports	6-1
On SEC-TV	1-1
On ESPN2	2-0
Vs. SEC	18-14
Vs. SEC West	8-7
Vs. SEC East	10-7
Non-SEC Games	28-3
Vs. Louisiana opponents	13-1
Vs. Ranked opponents	15-8
Vs. Atlantic Sun	2-1
Vs. C-USA	5-2
Vs. Mid-Continent	1-0
Vs. Ohio Valley	3-0
Vs. Southland	10-0
Vs. Sun Belt	2-0
Vs. Big 12	2-0
Vs. SWAC	1-0
Doubleheaders	4-0
Game 1 of weekend series	8-7
Game 2 of weekend series	12-3
Game 3 of weekend series	10-4
Sunday	13-4
Tuesday	9-1
Wednesday	2-1
Friday	8-6
Saturday	14-4
One-run games	7-7
Extra inning games	6-4
Shutouts	3-3
Number of Losing Streaks	2
Longest Losing Streak	4
Starting Pitchers	35-8
vs. Right-handers	21-5
vs. Left-handers	14-3
Relief Pitchers	10-9
Games in which LSU scores first	30-5
Games in which opponent scores first	16-12
When LSU scores 10+	21-1
When LSU scores <5	6-8
When opponent scores 10+	1-6
When opponent scores <5	37-2
When LSU leads after 6 innings	36-0
When LSU trails after 6 innings	3-14
When tied after 6 innings	7-3
When LSU leads after 7 innings	38-0
When LSU trails after 7 innings	3-14
When tied after 7 innings	5-3
When LSU leads after 8 innings	38-0
When LSU trails after 8 innings	0-13
When tied after 8 innings	7-4
When LSU has 10+ hits	38-8
When LSU has <6 hits	3-3
When opponent has 10+ hits	15-12
When opponent has <6 hits	9-0
When LSU has more hits	37-2
When LSU has fewer hits	5-13
Equal hits	4-1
When LSU hits 3 or more home runs	9-0
When LSU hits no home runs	9-9
When opponent hits 3+ home runs	1-4
When opponent hits no home runs	23-5
Games won on final at-bat	8
Games lost on final at-bat	4
Come-from-behind wins	18
Losses when LSU led previously	5
Longest game	4:00 (vs. Arkansas, 4/10)
Shortest game(9 or more innings)	1:57 (vs. Georgia, 5/27)

# Smoke Laval

HEAD COACH • THIRD YEAR

Raymond "Smoke" Laval enhanced his reputation as one of the country's top college baseball coaches, as, in just his second season at the helm of the LSU program, he guided the 2003 Tigers to the Southeastern Conference title -- LSU's first since 1997 -- and a berth in the College World Series.

Laval, the 2003 SEC Coach of the Year, directed LSU to a 45-22-1 overall record and a 20-9-1 conference mark, as the Tigers finished No. 5 in the final Baseball America rankings.

The magnificent '03 campaign augmented the success Laval enjoyed in his inaugural season as LSU's coach, as he led the 2002 Tigers to a 44-22 overall mark, an appearance in the NCAA Super Regional and a No. 11 final national ranking.

Laval, who served seven seasons (1994-2000) as the head coach at the University of Louisiana-Monroe, assumed control of the LSU program from Bertman, who led the Tigers to five NCAA championships and 11 College World Series appearances during an 18-year (1984-2001) tenure. Laval worked as Bertman's top assistant coach for 10 seasons (1984-93), helping lead LSU to its first two NCAA titles in 1991 and 1993. During Laval's 10 years as assistant coach, LSU posted a 483-182-1 record, won five SEC titles, appeared in six College World Series and captured two national championships.

Laval was known at LSU as one of the nation's best recruiters and brightest assistant coaches, as the Tigers reached the College World Series in only the third season (1986) of the Bertman-Laval regime. LSU followed the '86 CWS appearance with Omaha berths in 1987, 1989 and 1990 before the Tigers claimed the school's first baseball national title in 1991. After LSU captured its second NCAA crown in 1993, Laval departed Baton Rouge to become the head coach at Northeast Louisiana (now Louisiana-Monroe).

During his assistant coaching tenure at LSU, Laval -- who worked as the Tigers' primary recruiter - tutored 24 players who would eventually reach the major leagues. Some of the major leaguers with whom Laval worked include all-stars Albert Belle and Paul Byrd and first-round pick Todd Walker.

Laval compiled a 241-159 (.603) mark as the head coach at ULM, guiding the Indians to NCAA Regional appearances in 1995, 1999 and 2000.

Laval began his coaching career in 1977 as an assistant at Jacksonville University before moving to Wolfson High School in Jacksonville as a baseball and football coach. He served as a graduate assistant at LSU in 1979 under former Tiger head coach Jack Lamabe before working two years as an assistant at Gulf Coast Community College in Panama City, Fla.

Laval served as an assistant coach at Florida for two seasons (1982-83) before returning to LSU to work under Bertman.

Laval holds a bachelor's degree (1977) from Jacksonville in physical education and a master's degree (1979) from LSU in administration. The McDonald, Pa., native played two seasons at Gulf Coast Community College, where he lettered as a catcher. He completed his playing career at Jacksonville, where he led the ninth-ranked Dolphins in hitting at the 1976 NCAA South Regional.

Laval and his wife, Pam, are the parents of two children, Brandon and Jamie.

## Laval Year-By-Year

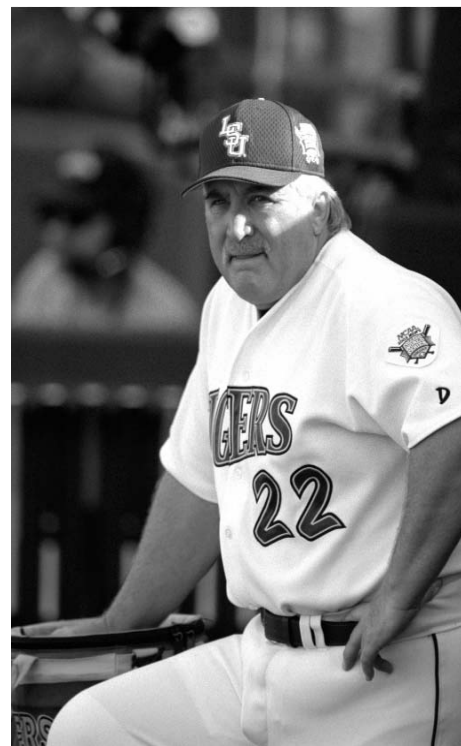
Year	W-L	School	Highlights
1994	20-33	UL-Monroe	Defeated Three NCAA Tournament Teams
1995	37-20	UL-Monroe	SLC Tournament Champions; NCAA Regional Participants
1996	41-19	UL-Monroe	School-Record 41 Wins; SLC Louisiana Division Champions
1997	33-21	UL-Monroe	Became Fourth Coach in ULM History To Record 100 Wins
1998	33-22	UL-Monroe	Led SLC In Hitting For Third Straight Season
1999	36-22	UL-Monroe	SLC Champions; NCAA Regional Participants
2000	41-22	UL-Monroe	SLC Champions; NCAA Regional Participants
2002	44-22	LSU	NCAA Regional Champions; NCAA Super Regional Participants
2003	45-22-1	LSU	SEC Champions; College World Series Participants
2004	46-17	LSU	NCAA Regional and Super Regional Champions

**Career Record (10th year):** 376-220-1

**LSU Record (3rd year):** 135-61-1

### COACHING HONORS

1995	Louisiana Sportswriters Association Coach of the Year
1999	Southland Conference Coach of the Year
2002	Louisiana Sportswriters Association Coach of the Year
2003	SEC Coach of the Year; Louisiana Sportswriters Association Coach of the Year



## The Laval File

**Full Name:** Raymond Peter Laval

**Born:** December 20, 1955

**Hometown:** McDonald, Pa.

**Wife:** Pam Lewis of Reserve, La.

**Children:** Jamie and Brandon

## Coaching Experience

1977	Assistant Coach	Jacksonville
1978	Assistant Coach	Wolfson HS (Jacksonville, Fla.)
1979	Graduate Assistant	LSU
1980-81	Assistant Coach	Gulf Coast CC
1982-83	Assistant Coach	Florida
1984-93	Assistant Coach	LSU
1994-2000	Head Coach	UL-Monroe
2001	Administrative Asst.	LSU
2002-	Head Coach	LSU

## Education

High School: South Fayette(McDonald, Pa.), 1973

College: Jacksonville, 1977 (physical education)

Masters: LSU, 1979 (administration)

## Playing Experience

1970-73: Catcher, South Fayette High School

1974-75: Catcher, Gulf Coast CC

1976-77: Catcher, Jacksonville University

## The Nickname "Smoke"

As a native of Western Pennsylvania, Raymond Peter Laval grew up as a Pittsburgh Pirates fan. He received the name "Smoke" in the late 1970s from his Gulf Coast Community College teammates, who derived the moniker from Smokey Burgess, a catcher for the Pirates in the 1960s.

# Media Services

## Practice Sessions

LSU practice sessions in Omaha are open to the media. The Tigers will practice at Rosenblatt Stadium on Thursday, June 17, from 4-5 p.m. Times and location-sn for subsequent practice sessions in Omaha may be obtained by contacting Bill Franques at 225.241.4359.

## Post Game Press Conferences

All coaches and players will be available for interviews. At the conclusion of the 10-minute cooling off period, the losing coach and a minimum of two players will be brought to the Hall of Fame Room at Rosenblatt Stadium. The winning team will follow with coach and a minimum of two players. A member of the sports information staff will ask for player requests in the late innings of each game. Players not designated for the Hall of Fame Room may be interviewed in the dugout or locker room areas.

## Team Headquarters

LSU will be headquartered at the Doubletree Guest Suites in Omaha. The address is 7270 Cedar Street. **Phone Number: 402.397.5141**

### Who to Contact

**Sports Information Office**  
(225) 578-8226

#### Media Coordinator

Kent Lowe - clowe@lsu.edu  
Cell: (225) 241-4360

#### Baseball Contact

Bill Franques - wfranqu@lsu.edu  
Cell: (225) 241-4359

#### Asst. Contact

Bill Martin - wmarti4@lsu.edu  
Cell: (337) 370-1250

#### LSU Television

(225) 578-1797

#### Asst. AD/Television

Kevin Wagner - jwagne2@lsu.edu

#### Manager/Television

John Schiebe - jschiebe@lsu.edu

### On the Internet

#### www.LSUports.net

The Official Website of LSU Athletics is home to all the baseball information you need. Schedules, results, rosters, bios, statistics and game notes can be found and are always up to date.

#### http://media.lsusports.net

Media can now access images for all LSU athletic teams, including action shots, heads shots, logos, etc. To gain access to the high-resolution pictures, email Bill Franques. You will be assigned a login and password that will enable you to retrieve pictures. This service is for the media use only.

## LSU Electronic Media

### Radio

The LSU Sports Radio Network distributes all LSU Baseball games by satellite to 25 radio affiliates. WDGL-FM (98.1) Radio in Baton Rouge serves as the flagship station for the LSU Sports Network. Jim Hawthorne, the "Voice of the Tigers" for all LSU sports, is in his 21st season of calling baseball play-by-play action. He is joined on the broadcasts by Charles Hanagriff and LSU baseball publicist Bill Franques.

### Television

Inside LSU Baseball is a weekly program featuring LSU head coach Smoke Laval. The show, which aired through May 23, features game highlights, player profiles and in-depth stories on college baseball's No. 1 program. Inside LSU Baseball is produced by the LSU Electronic Media Department – Kevin Wagner, Executive Producer; John Schiebe, Associate Producer. Inside LSU Baseball Affiliates include WBRZ Channel 2 in Baton Rouge and Cox Sports Television throughout the state of Louisiana.

Bill Franques  
wfranqu@lsu.edu

## Week 19-20 June 17-23

Bill Martin  
wmarti4@lsu.edu

THURSDAY 17	FRIDAY 18	SATURDAY 19	SUNDAY 20	MONDAY 21	TUESDAY 22	WEDNESDAY 23
CWS Press Conference 2 p.m. Hall of Fame Room Rosenblatt Stadium	LSU Practice Time TBA	NCAA College World Series LSU vs. Miami 6 p.m.  Radio: LSU Sports Network  TV: ESPN	LSU Practice Time TBA	NCAA College World Series  LSU vs. South Carolina or Cal State Fullerton  Radio: LSU Sports Network  TV: ESPN or ESPN 2	Schedule TBA	Schedule TBA

## CWS Quick Facts: LSU vs. Miami (Fla.)

### TEAM RECORDS

#### LSU

46-17 overall (most victories since 2000 team won 52)  
5-0 NCAA Tournament  
3-0 Baton Rouge Regional  
2-0 Baton Rouge Super Regional  
18-12 SEC (3rd overall)

#### Miami

49-11 overall  
5-0 NCAA Tournament  
3-0 Coral Gables Regional  
2-0 Coral Gables Super Regional

### RADIO

All games will be broadcast live by the LSU Sports Network and can be heard on WDGL-98.1, the network's flagship station in Baton Rouge. Jim Hawthorne, Charles Hanagriff and Bill Franques call the action.

### TELEVISION

Saturday's game will be televised live by ESPN.

### INTERNET

Live audio from the LSU Sports Network will be available at [www.lsusports.net](http://www.lsusports.net), while live statistics from all CWS games will be available at [www.ncaasports.com](http://www.ncaasports.com).

### RANKINGS

LSU: No. 6 Collegiate Baseball  
No. 7 Baseball America

Miami: No. 1 Collegiate Baseball  
No. 1 Baseball America

### NCAA TOURNAMENT RECORD

LSU holds the highest NCAA Tournament winning percentage in Division I at .738 (104-37). The Tigers are 29-15 in College World Series play. LSU is making its 13th CWS appearance since 1986. Miami is making its 21st CWS appearance and the Hurricanes have a 152-68 cumulative NCAA Tournament record.

### LAST YEAR

LSU was 0-2 in the College World Series for just the second time in 12 appearances. The Tigers were defeated by Cal State Fullerton (8-2) and by South Carolina (11-10) as LSU completed its season with a 45-22-1 mark.

Miami placed fifth in the 2003 College World Series with a 1-2 mark as the Hurricanes finished the season with a 45-17-1 overall record.

### COACHES

Smoke Laval, LSU (third year at LSU, 135-61-1; 10th year overall, 376-220-1)  
Jim Morris, Miami (11th year at Miami, 521-176-2; 23rd year overall, 1025-420-3)

### UP NEXT

The winner of the LSU-Miami game advances to a winners' bracket game Monday at 6 p.m. on ESPN2 against the winner of Saturday's Cal State Fullerton-South Carolina contest.

The LSU-Miami loser plays the Cal State Fullerton-South Carolina loser at 1 p.m. Monday in an elimination game on ESPN2.

## Statistical Comparison

	Avg.	Runs	HR	RBI	SLG%	OB%	SB	FLD%	ERA	Saves	BB	K	Opp. Avg.
Miami	.329	519	78	469	.525	.424	132	.970	3.59	19	252	468	.238
LSU	.333	506	79	463	.511	.401	43	.970	3.51	7	153	388	.270

## 104 and Counting ...

With a 9-0 victory over Army in the first round of the NCAA Baton Rouge Regional, LSU reached the 100-win plateau in NCAA Tournament wins, joining Texas, Southern Cal, Arizona State, Miami (Fla.) and Stanford as the only six schools to win at least 100 games in NCAA Tournament history. The Tigers currently hold the highest winning percentage among the six teams, posting a 104-37 record (.738) since its first tournament postseason berth in 1975.

### NCAA Tournament Winning Percentage

LSU	.734 (102-37)
Southern Cal	.723 (167-64)
Miami (Fla.)	.690 (152-68)
Arizona State	.686 (120-55)
Stanford	.673 (115-56)
Texas	.670 (187-92)

### NCAA Tournament Wins

Texas	187
Southern Cal	167
Miami (Fla.)	152
Arizona State	120
Stanford	115
LSU	102

## The LSU-Miami Series

Miami leads the all-time series with LSU, 8-5, as the teams first met in the 1975 NCAA South Regional in Starkville, Miss., where the Hurricanes posted an 8-1 victory. The Hurricanes hold a 3-2 advantage over the Tigers in NCAA Tournament play. UM won the aforementioned 1975 NCAA Regional game, and the teams have split four games in the College World Series.

The Hurricanes posted a 4-3 win over LSU in the 1986 CWS, eliminating the Tigers in the first Series trip. The teams met twice in the 1989 CWS -- Miami posted a 5-2 victory in the teams' opening game before the Tigers rebounded for a 6-3 win over UM in an elimination contest.

The most famous LSU-UM encounter occurred in the teams' last meeting -- the championship game of the 1996 CWS. LSU second baseman Warren Morris launched a two-out, two-run homer in the bottom of the ninth inning to lift the Tigers to a 9-8 victory and give LSU its third NCAA title.

## LSU-Miami Ties

Former LSU head coach and current athletics director Skip Bertman is a 1961 University of Miami graduate. He played catcher for the Hurricanes during his undergraduate career, and he later returned to Miami as the Hurricanes' pitching coach from 1976-83, helping lead UM to the 1982 NCAA title.

Bertman became LSU's head coach in 1984, and he enjoyed a brilliant 18-year career, leading the Tigers to five national titles (1991, 1993, 1996, 1997, 2000) and 11 College World Series appearances from 1984-2001. Bertman is a member of the University of Miami Athletic Hall of Fame.

Current LSU assistant coach/recruiting coordinator Turtle Thomas served as an assistant coach at Miami for 12 seasons (1988-99). Thomas helped to guide UM to the 1999 national title, and in his first season at LSU, he assisted Bertman in leading LSU to the 2000 NCAA championship.

## Holt, Zeringue Selected on First Day of Major League Draft

Right fielder Jon Zeringue and center fielder J.C. Holt were selected Monday during the first day of the Major League Baseball draft. Zeringue, a 2004 USA TODAY/Sports Weekly first-team all-American, was chosen in the second round (56th pick) by the Arizona Diamondbacks, and Holt was selected in the third round (101st pick) by the Atlanta Braves. Zeringue, the 2004 Southeastern Conference Co-Player of the Year, is hitting .389 (93-for-239) this season with 19 doubles, two triples, 12 homers, 54 RBI and 54 runs. Zeringue was selected for the second time in his career, as he was also chosen as a high school senior in the 2001 draft (third round) by the Chicago White Sox. Holt, a junior from Sieper, La., is hitting a team-high .396 (101-for-255) with 18 doubles, three triples, five homers, 48 RBI, 69 runs and 20 steals. A 2004 first-team all-SEC selection, Holt was named to the NCAA Baton Rouge Regional all-tournament team as he batted .385 (5-for-13) in three games with one double and five RBI. Holt is just nine hits shy of tying Brandon Larson (110 hits in 1997) for first place on the LSU single-season hits list.

## Bumstead, Gill Highlight Second Day of Major League Draft

Pitcher Nate Bumstead and shortstop Blake Gill were selected Tuesday during the final day of the Major League Baseball draft. Bumstead was chosen in the 32nd round (943rd pick) by the Detroit Tigers, and Gill was selected in the 37th round (1097th pick) by the Cleveland Indians. Bumstead, a senior right-hander from Las Vegas, leads LSU in victories this season with a 10-3 record. He has a 3.51 ERA in 89.2 innings, allowing 35 earned runs on 98 hits with 17 walks and 51 strikeouts. Bumstead helped lead LSU to the NCAA Baton Rouge Regional title last weekend, posting a complete-game victory over Southern Mississippi on Saturday. He was named to the regional all-tournament team after limiting USM to two runs on eight hits with two walks and six strikeouts. Gill, a junior from Bradenton, Fla. is hitting .344 (75-for-218) with 11 doubles, four triples, five homers, 40 RBI and 39 runs. Gill was named the Most Outstanding Player of the NCAA Baton Rouge Regional last weekend, batting .455 (5-for-11) in three games with one double, one triple, one homer, seven RBI and two runs.

## Zeringue Earns SEC Co-Player of the Year Honors

For the second time in as many seasons, an LSU player was named SEC Position Player of the Year as outfielder Jon Zeringue shared the honors with Ole Miss utility player Stephen Head, the league office announced before the SEC Tournament. Zeringue became the fifth LSU player to earn SEC Player of the Year honors, joining Aaron Hill (2003), Eddy Furniss (1996), Russ Johnson (1994) and Todd Walker (1993), all of whom also earned first team all-America honors during the seasons in which they won the SEC MVP award. Zeringue, a native Thibodaux, La., batted a league-best .432 (51-for-118) in SEC regular-season games with six doubles, one triple, seven homers, 26 RBI and 28 runs. It marked the second time in school history an LSU player has won the award in back-to-back seasons. Aaron Hill captured the award in 2003 with a league-leading conference batting average of .398, while posting a league-high .483 on-base percentage in conference games.

## Zeringue Named *Baseball Weekly* First-Team All-American

Jon Zeringue has been named to the 2004 USA TODAY/Sports Weekly first-team all-America squad. Zeringue becomes the 17th player in LSU history to earn first-team all-America honors. Zeringue is joined on the 2004 first-team all-America outfield by Chris Rahl of William & Mary and Marshall Hubbard of North Carolina. The remainder of the first team includes catcher Landon Powell of South Carolina; first baseman Billy Becher of New Mexico State; second baseman Jed Lowrie of Stanford; third baseman Alex Gordon of Nebraska; shortstop Dustin Pedroia of Arizona State; and utility/DH Stephen Head of Ole Miss. The first-team pitchers are Jered Weaver of Long Beach State; J.P. Howell of Texas; Wade Townsend and Philip Humber of Rice; and Blair Erickson of UC-Irvine.

## Four Tigers on 2004 All-SEC Team, Dirks Named to All-Freshman Squad

Four LSU players were named to the All-SEC Team announced before the SEC Tournament. Jon Zeringue and J.C. Holt joined Mississippi State's Brad Corley to round out the first-team outfielders. Holt and Zeringue appeared near the top in virtually all SEC offensive categories. Third baseman Clay Harris and outfielder Ryan Patterson earned second-team honors. It marked the second year in a row that Harris and Patterson were named to the team as both received first-team All-SEC accolades in 2003. Clay Dirks was one of three pitchers named to the All-Freshman Team. Dirks, a native of Hernando, Miss., leads the LSU staff with a 3.35 ERA and his two complete games register as a team high as well.

## LSU vs. Miami in NCAA Tournament

Year	Site	Result
1996	! Omaha	LSU, 9-8
1989	! Omaha	LSU, 6-3
1989	! Omaha	UM, 5-2
1986	! Omaha	UM, 4-3
1975	% Starkville	UM, 8-1

! - *College World Series*

% - *NCAA South Regional*

## LSU vs. 2004 NCAA Super Regional Teams

Date	Opponent	Site	Result
5/27/04	# Georgia	Hoover, Ala.	L, 0-1
5/26/04	# Florida	Hoover, Ala.	L, 4-5 (10)
5/16/04	Vanderbilt	Baton Rouge	L, 0-8
5/15/04	Vanderbilt	Baton Rouge	W, 7-6 (11)
5/15/04	Vanderbilt	Baton Rouge	W, 3-2 (10)
4/27/04	Tulane	New Orleans	W, 9-5
4/18/04	Georgia	Baton Rouge	L, 4-12
4/17/04	Georgia	Baton Rouge	W, 10-2
4/16/04	Georgia	Baton Rouge	W, 6-5 (10)
4/11/04	Arkansas	Baton Rouge	L, 5-7
4/10/04	Arkansas	Baton Rouge	L, 10-11(10)
4/9/04	Arkansas	Baton Rouge	L, 8-11
4/6/04	Tulane	Baton Rouge	L, 0-1
3/21/04	South Carolina	Columbia	W, 12-7
3/20/04	South Carolina	Columbia	L, 5-12
3/19/04	South Carolina	Columbia	W, 6-3 (11)
3/2/04	Tulane	Metairie	W, 6-0

# - *SEC Tournament*

## LSU College World Series History

Year	Record	Finish
1986	1-2	5th
1987	2-2	4th
1989	2-2	3rd
1990	2-2	3rd
1991	4-0	1st
1993	4-1	1st
1994	0-2	7th
1996	4-0	1st
1997	4-0	1st
1998	2-2	3rd
2000	4-0	1st
2003	0-2	7th

## Tracking the Tigers

Week	BA	CB	ESPN/SW
Preseason	2	3	3
Feb. 2	2	3	3
Feb. 9	2	3	3
Feb. 16	2	4	5
Feb. 23	3	1	5
March 1	3	1	4
March 8	5	1	5
March 15	4	1	5
March 22	3	1	3
March 29	3	2	3
April 5	3	2	3
April 12	7	12	9
April 19	7	8	8
April 26	6	6	6
May 3	5	5	5
May 10	5	7	5
May 17	4	9	5
May 24	3	11	5
May 31	12	12	8
June 7	10	8	N/A
June 14	7	6	N/A

## Baseball America (June 14)

- Miami, Fla. (49-11)
- Texas (55-13)
- South Carolina (50-15)
- Cal State Fullerton (42-21)
- Arkansas (45-22)
- Georgia (43-21)
- LSU (46-17)
- East Carolina (51-13)
- Stanford (46-14)
- Georgia Tech (44-21)
- Rice (46-14)
- Arizona (35-25)
- Long Beach State (40-21)
- Florida State (45-23)
- Notre Dame (51-12)
- Florida (43-22)
- Vanderbilt (45-19)
- Oral Roberts (50-11)
- Tulane (41-21)
- Texas A&M (42-22)
- Washington (39-20)
- Arizona State (41-18)
- Ole Miss (39-21)
- Virginia (44-15)
- Oklahoma (38-24)

## Collegiate Baseball (June 14)

- Miami (Fla.) (49-11)
- Texas (55-13)
- Arkansas (45-22)
- Cal State Fullerton (42-21)
- Georgia (43-21)
- LSU (46-17)
- South Carolina (50-15)
- Arizona (35-25-1)
- Stanford (46-14)
- Rice (46-14)
- Georgia Tech 44-21)
- Long Beach State (40-21)
- East Carolina (51-13)
- Florida State (45-23)
- Tulane (41-21)
- Texas A&M (42-22)
- Vanderbilt (45-19)
- Florida (43-22)
- Notre Dame (51-12)
- Virginia (44-15)
- Washington (39-20-1)
- Oral Roberts (50-11)
- Arizona State (41-18)
- Ole Miss (39-21)
- Central Florida (47-18)

## Gill Named Most Outstanding Player of NCAA Baton Rouge Regional

For the second consecutive year, shortstop Blake Gill has continued a stellar postseason run, earning Baton Rouge regional Most Outstanding Player honors for his efforts in LSU's three victories. Gill batted .455 (5-for-11) in the three wins with a double, a triple, a homer, seven RBI and two runs scored. Not only did Gill lead the Tigers in RBI in the regional, the junior held a slugging percentage of 1.000 and 11 total bases. He started the scoring in the 9-0 win over Army with a two-run triple in the fourth inning. Gill has also hit safely in his last 11 games and currently holds the longest hitting streak by any Tiger. Despite going two and out in the SEC Tournament, it was Gill who led LSU at the plate three weeks ago. In the Tigers' 1-0 loss to Georgia, Gill collected two of LSU's four hits and batted .375 (3-for-8) during the tournament.

## LSU in the NCAA Tournament Under Smoke Laval

Head coach **Smoke Laval** has guided the Tigers to a 14-6 record in NCAA Tournament play, including College World Series appearances in 2003 and 2004.

<b>2002</b>	<b>(4-3)</b>	<b>2003</b>	<b>(5-3)</b>
vs. Southern *	W, 5-4	vs. Northeastern *	W, 11-8
vs. UL-Lafayette *	L, 0-5	vs. Tulane *	W, 13-5
vs. Tulane *	W, 4-2	vs. UNC Wilmington *	W, 9-8 (11)
vs. UL-Lafayette *	W, 12-2	vs. Baylor #	L, 1-4
vs. UL-Lafayette *	W, 12-2	vs. Baylor #	W, 6-5
at Rice #	L, 0-6	vs. Baylor #	W, 20-5
at Rice #	L, 0-3	vs. Cal State Fullerton !	L, 2-8
		vs. South Carolina !	L, 10-11
<b>2004</b>	<b>(5-0)</b>		
vs. Army *	W, 9-0		
vs. Southern Miss *	W, 6-2		
vs. Coll. of Charleston *	W, 11-3		
vs. Texas A&M #	W, 11-8		
vs. Texas A&M #	W, 4-0		

\* - NCAA Regional # - NCAA Super Regional ! - College World Series

## Trio Produces Most Productive Outfield in the SEC

If statistics are indicative of the success of a team's performance, then the numbers tell the story when it comes to LSU's junior outfield trio of Ryan Patterson, J.C. Holt and Jon Zeringue. With all three carrying preseason All-American accolades by at least one publication, the trio has lived up to its billing, registering the highest batting average (.374), most RBI (163) and most runs (190) among all outfielders in the SEC through NCAA Regional play (as of June 6).

The LSU trio shares an overwhelming lead in RBI with the next-highest outfield (Florida) 21 RBI away. LSU also held a 54-run advantage over the Gators outfielders as the leader in runs. Patterson, Holt and Zeringue also ranked No. 2 in home runs (30) and were tied for third in stolen bases (29).

## How the statistics stack up amongst the Top 9 Most Productive Outfields in the SEC: (as of June 6, 2004)

<b>LSU:</b> Ryan Patterson, J.C. Holt, Jon Zeringue	.374	30 HR	163 RBI	190 R	29 SB
<b>South Carolina:</b> Michael Campbell, Davy Gregg, Brendan Winn	.313	32 HR	137 RBI	122 R	24 SB
<b>Florida:</b> C.J. Smith, Jeff Corsaletti, Brian LeClerc	.330	24 HR	142 RBI	136 R	18 SB
<b>Mississippi State:</b> Brad Corley, Jeff Butts, Joseph Hunter	.331	22 HR	109 RBI	115 R	9 SB
<b>Tennessee:</b> Eli Iorg, Josh Alley, Chase Headley	.309	11 HR	84 RBI	119 R	41 SB
<b>Auburn:</b> Clete Thomas, Sean Gamble, J.T. Williamson	.307	5 HR	93 RBI	100 R	28 SB
<b>Ole Miss:</b> Seth Smith, Charlie Babineaux, Alex Presley	.292	26 HR	118 RBI	108 R	16 SB
<b>Arkansas:</b> Casey Rowlett, Jake Dugger, Blake Parker	.301	9 HR	83 RBI	115 R	37 SB
<b>Georgia:</b> Bobby Felmy, Kyle Keen, Joey Side	.291	17 HR	102 RBI	124 R	29 SB

(Compiled by Bill Martin and Will Stafford of LSU Sports Information)



**41**  
**Nate Bumstead**

RH Pitcher  
6-1, 210, R-R, Sr., 1L  
Las Vegas, Nev. (College of Southern Idaho)

- Injured right shoulder in Feb. 3 intrasquad game; an MRI revealed a torn labrum, however, team doctor cleared him to pitch this season
- Selected in 32nd round of 2004 MLB draft by the Detroit Tigers
- Pitched first complete nine-inning game this season in NCAA Baton Rouge Regional vs. Southern Miss (June 5), allowing two runs on eight hits with two BB and six Ks; named to regional all-tournament team
- Defeated Auburn (April 4), pitching 8.1 innings - two runs on five hits with three Ks
- Earned win at Tennessee (April 25), working 7 innings and limiting the Vols to one run on five hits with no walks and one strikeout
- Complete-game win (7 innings) over Alabama (May 2), limiting the Tide to two runs on 10 hits with no walks and three Ks
- Defeated Ole Miss (May 22), limiting the Rebels to one earned run on six hits in 7.2 innings with three walks and six strikeouts

**Bumstead's LSU Career Highs**

Innings: 9.0 (three times; most recently vs. Southern Miss (6/5/04))  
Strikeouts: 10 vs. Ole Miss (4/13/03)  
Hits Allowed: 12 vs. Arkansas (4/11/04)  
Runs: 8 (twice)  
Earned Runs: 8 (twice)  
Walks: 4 vs. Tennessee (4/27/03)



**33**  
**Jason Determann**

Pitcher  
5-10, 170, R-L, So., 1L  
Baton Rouge, La. (Catholic HS)

- LSU baseball's top scholar with a 3.7 gpa in biological sciences
- Earned relief win over Texas A&M in NCAA Super Regional (June 12), limiting the Aggies to three runs (two earned) on six hits in six innings with one walk and three Ks
- First career SEC regular-season start on 4/16 vs. Georgia -- 8.1 innings, 5 runs, 8 hits, 1 BB, 5 K (no decision in 6-5 LSU 10-inning win)
- Relief win vs. Vanderbilt (May 15), allowing two runs on five hits in seven innings with two walks and three Ks
- Relief win at Ole Miss (May 23) -- 4.1 IP, 2 runs, 4 hits, 1 BB, 3 Ks

**Determann's LSU Career Highs**

Innings: 8.1 vs. Georgia (4/16/04)  
Strikeouts: 7 (twice, most recently at New Orleans (3/30/04))  
Hits Allowed: 9 at Tennessee (4/23/04)  
Runs: 6 vs. SE Louisiana (4/23/03); at Kentucky (5/7/04)  
Earned Runs: 6 at Kentucky (5/7/04)  
Walks: 4 vs. South Carolina (6/15/03)



**13**  
**Clay Dirks**

LH Pitcher  
6-4, 235, L-L, Fr., RS  
Hernando, Miss. (Hernando HS)

- Named to 2004 Freshman all-SEC team and 2004 Collegiate Baseball Freshman all-America squad
- Named National Pitcher of the Week (NCBWA) and SEC Pitcher of the Week after firing a four-hit shutout (1 BB, 7 Ks) versus eighth-ranked Tulane (March 2)
- Pitched 17.1 consecutive innings without allowing an earned run in a three-game stretch from Feb. 22-March 9
- Defeated Miss. State (March 27) in first career SEC start, limiting the Bulldogs to two runs on five hits in eight innings with one walk and seven Ks

**Dirks' LSU Career Highs**

Innings: 9 vs. Tulane (3/2/04); at Auburn (4/3/04)  
Strikeouts: 7 on four occasions, most recently vs. Georgia (4/16/04)  
Hits Allowed: 10 at Tennessee (4/24/04)  
Runs: 7 vs. Alabama (5/1/04)  
Earned Runs: 5 vs. Arkansas (4/10/04)  
Walks: 3 (twice)



**29**  
**Jordan Faircloth**

Pitcher  
6-3, 215, R-R, Jr., 1L  
Alexandria, La. (Alexandria HS)

- Talented pitcher with a side-arm delivery who has taken on a major relief role in 2004 after making his LSU debut last season; named to 2004 SEC Academic Honor Roll (political science)
- 0.00 ERA in last 5 innings (three postseason appearances) -- no runs on three hits with two walks and two strikeouts in that span
- Collected save in Game 1 of NCAA Super Regional vs. Texas A&M (June 12), allowing no runs on two hits in 2.1 innings with one walk and two strikeouts
- Earned save vs. Tulane (April 27) with 1.2 shutout innings (no hits, no walks, 3 Ks)
- Earned win at Kentucky (May 8), firing three shutout innings with two hits, no BB, one K
- Posted victory vs. Vanderbilt (May 15), limiting VU to one run on three hits in 3.2 innings with no walks and three Ks

**Faircloth's LSU Career Highs**

Innings: 5.2 vs. Alabama (5/1/04)  
Strikeouts: 4 vs. Alabama (5/1/04)  
Hits Allowed: 7 vs. Arkansas (4/9/04)  
Runs: 4 at Tennessee (4/23/04)  
Earned Runs: 4 at Tennessee (4/23/04)  
Walks: 2 (twice)



**3**  
**Blake Gill**

Infielder  
5-10, 190, L-R, Jr., 2L  
Bradenton, Fla. (Manatee HS)

- Most Outstanding Player of NCAA Baton Rouge Regional; hit .455 (5-for-11) in the regional with one 2B, one 3B, one HR and seven RBI
- Selected in 37th round of 2004 MLB draft by the Cleveland Indians
- Enters CWS riding a career-best 13-game hitting streak
- Hit .462 (6-for-13) in Miss. State series (March 26-28) with two 2B, four runs and one RBI
- Tied career-high with 4 hits vs. Miss. State on March 28
- Has also produced five 3-hit games: at UCF (Feb. 15), vs. Houston (March 5), vs. SE Louisiana (March 13), at Ole Miss (May 23); vs. College of Charleston (June 6)

**Gill's LSU Career Highs**

At-Bats: 6 at Georgia (3/22/03); at South Carolina (3/19/04)  
Hits: 4 vs. Mercer (2/17/02); 4 vs. Miss. State (3/28/04)  
Runs Scored: 3 (several occasions)  
Doubles: 1 (several occasions)  
Triples: 1 (several occasions)  
Home Runs: 1 (several occasions)  
RBI: 6 vs. Georgia (4/14/02)  
Stolen Bases: 1 (several occasions)



**21**  
**Clay Harris**

Infielder  
6-4, 230, R-R, Jr., 2L  
Slidell, La. (Slidell HS)

- 2004 second-team all-SEC selection at third base
- Sac fly in ninth inning of NCAA Super Regional Game 2 vs. Texas A&M (June 13); the RBI broke a 0-0 tie and helped the Tigers to a 4-0 victory to advance to the CWS
- Homered in three straight games from March 30-April 3
- Named SEC Player of the Week on April 5 after leading LSU to a series victory at Auburn; hit .455 (5-for-11) in the Auburn series with two homers, one double, seven RBI, three runs
- 6-for-13 in Ole Miss series (May 21-23) with three 2B, one HR, five RBI and five runs

**C. Harris' LSU Career Highs**

At-Bats: 6 (three occasions)  
Hits: 3 (several occasions; most recently at Ole Miss (5/22/04))  
Runs Scored: 3 (several occasions; most recently at Ole Miss (5/22/04))  
Doubles: 2 (several occasions; most recently at Ole Miss (5/22/04))  
Triples: 1 (three occasions)  
Home Runs: 2 (three occasions)  
RBI: 6 vs. Ole Miss (4/13/03)  
Stolen Bases: 1 (three occasions)





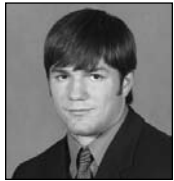
**25**  
**Will Harris**

First Baseman  
6-3, 240, R-R, So., 1L  
Slidell, La. (Slidell HS)

- Hitting .474 (9-for-19) in NCAA Tournament games with two 2B, one HR, five RBI
- Three-run HR in top of ninth vs. Texas A&M (June 13) clinched Super Regional win
- Named to 2004 NCAA Baton Rouge Regional all-tournament team -- .600 (6-for-10) with two doubles, one RBI, three runs
- 2-for-2 with a grand slam - LSU's only slam this season -- vs. SE Louisiana (March 12)
- Named Louisiana Player of the Week on March 16 after batting .875 (7-for-8) in a three-game stretch (vs. UL-Monroe and SE La.) with a grand slam and six RBI
- 4-for-5 with one 2B, one HR, two runs and three RBI at Kentucky (May 9)

**W. Harris' LSU Career Highs**

At-Bats: 6 at Southern (4/20/04)  
Hits: 4 at UL-Monroe (3/9/04); at Kentucky (5/9/04)  
Runs Scored: 3 at Ole Miss (5/23/04)  
Doubles: 1 (several occasions)  
Triples: none  
Home Runs: 1 (several occasions)  
RBI: 4 vs. SE Louisiana (3/12/04)  
Stolen Bases: none



**2**  
**Derek Hebert**

Infielder  
5-10, 180, L-R, Jr., JC  
New Iberia, La. (El Camino College)

- Excellent all-around prospect that transferred to LSU after one year at El Camino College in Torrance, Calif.
- 4-for-6 at Southern (April 20) with four runs scored; led off four straight innings (3rd-6th) with singles and eventually scored each time

**Hebert's LSU Career Highs**

At-Bats: 6 at Southern (4/20/04)  
Hits: 4 at Southern (4/20/04)  
Runs Scored: 4 at Southern (4/20/04)  
Doubles: 1 (several occasions)  
Triples: none  
Home Runs: 1 at Central Florida (Feb. 14)  
RBI: 1 (several occasions)  
Stolen Bases: none



**1**  
**J.C. Holt**

Outfielder  
5-9, 170, L-R, Jr., 2L  
Sieper, La. (Oak Hill HS)

- 2004 first-team all-SEC selection; 3rd-round pick by Braves in 2004 MLB draft
- 2004 SEC Academic Honor Roll (management major)
- Needs eight hits to set LSU single-season hits mark (110 - Brandon Larson, 1997)
- .385 (5-for-13) with one 2B, five RBI in NCAA Baton Rouge Regional; named all-tournament
- No. 2 in the SEC in on-base percentage, runs scored (70), hits (103) and batting average (.390)
- 10-game hit streak from Feb. 22-March 12, batting .438 (21-for-48) during the streak with three doubles, one triple, one homer, nine RBI and 12 runs
- Collected 200th career hit with first-inning single at Southern (April 20)
- Posted a 13-game hitting streak from April 9-27; batting .458 (27-for-59) during the streak with four doubles, 12 RBI and 23 runs
- 8-for-15 in Ole Miss series (May 21-23) with one 2B, six RBI and two runs

**Holt's LSU Career Highs**

At-Bats: 6 (several occasions)  
Hits: 4 (several occasions)  
Runs Scored: 4 at Southern (4/20/04)  
Doubles: 2 (three occasions; most recently at Tennessee (4/25/04))  
Triples: 1 (several occasions)  
Home Runs: 2 vs. Northeastern (5/30/03)  
RBI: 5 vs. Northeastern (5/30/03)  
Stolen Bases: 3 vs. Northwestern St. (2/8/03)



**34**  
**Matt Horwath**

Infielder  
5-9, 175, R-R, Fr., RS  
Lake Mary, Fla. (Lake Mary HS)

- Skilled infielder who played as LSU's starting shortstop for the first eight games of the 2003 season before suffering a right shoulder injury that required surgery
- Has played on a part-time basis this season due to soreness in his shoulder
- 2-for-3 with one HR and two RBI at Central Florida (Feb. 14)
- 2004 SEC Academic Honor Roll member

**Horwath's LSU Career Highs**

At-Bats: 5 (several occasions)  
Hits: 3 vs. UL-Monroe (2/17/04)  
Runs Scored: 2 (several occasions)  
Doubles: 1 (several occasions)  
Triples: none  
Home Runs: 1 (twice)  
RBI: 2 (three occasions)  
Stolen Bases: 1 vs. Northwestern St. (2/8/03)



**14**  
**Matt Liuzza**

Catcher  
6-0, 190, R-R, So., 1L  
Kenner, La. (Rummel HS)

- LSU's leading hitter in NCAA Tournament games, batting .500 (8-for-16) with one 2B, 1 RBI
- Has been named to the "Watch List" for the 2004 Johnny Bench Award
- .500 (5-for-10) in NCAA Baton Rouge Regional with one 2B, one RBI, four runs; named to regional all-tournament team
- Named SEC Player of the Week March 22 after leading LSU to series win over S. Carolina; homered twice and drove in four runs in Game 3 victory over the Gamecocks (March 21)
- Career-best 14-game hit streak from Feb. 14-March 9; batted .407 (22-for-54) during the streak with five doubles, two homers, 13 RBI and 10 runs

**Liuzza's LSU Career Highs**

At-Bats: 6 at South Carolina (3/21/04); vs. Vanderbilt (5/15/04)  
Hits: 4 vs. Arkansas (4/9/04)  
Runs Scored: 3 (twice)  
Doubles: 2 vs. Auburn (5/10/03)  
Triples: none  
Home Runs: 2 at South Carolina (3/21/04)  
RBI: 5 vs. Arkansas (4/10/04)  
Stolen Bases: 1 vs. Northwestern St. (2/9/03)



**35**  
**Justin Meier**

RH Pitcher  
6-0, 210, R-R, So., 1L  
Windermere, Fla. (West Orange HS)

- Solid hurler who made an immediate impact last season as a true freshman, pitching in the SEC weekend rotation and earning 2003 Freshman all-America recognition
- Fired complete-game shutout in NCAA Baton Rouge Regional opener vs. Army (June 4), scattering seven hits with no walks and a career-best nine strikeouts
- Has allowed more than four earned runs in just one of his 15 starts this season
- Fired eight Ks at South Carolina (March 19); limited the Gamecocks to three runs on seven hits in 8.1 innings with three walks
- Returned to SEC starting rotation vs. Alabama (May 2) after a two-week absence; limited the Tide to one run on eight hits in 7.2 innings with one walk and three Ks in 2-1 LSU win
- Tied career high with nine Ks in SEC Tournament vs. Florida (May 26); allowed four runs on eight hits in 6.1 innings with two walks

**Meier's LSU Career Highs**

Innings: 9.0 (three times; most recently vs. Army (6/4/04))  
Strikeouts: 9 at Auburn (4/2/04); vs. Florida (5/26/04); vs. Army (6/4/04)  
Hits Allowed: 12 vs. Baylor (6/8/03)  
Runs: 8 at Kentucky (5/8/04)  
Earned Runs: 8 at Kentucky  
Walks: 5 at Mississippi State (5/2/03)



**46**  
**Lane Mestepey**

LH Pitcher  
6-0, 195, L-L, Jr., 2L  
Zachary, La. (Central Private HS)

- Returned to action in 2004 after receiving a medical redshirt in '03 due to shoulder surgery
- A two-time first-team all-SEC selection with a 29-11 career record in 50 starts; ranked No. 7 on LSU all-time list for pitching victories; 2004 SEC Academic Honor Roll (kinesiology)
- Brilliant outing in Game 2 of NCAA Super Regional vs. Texas A&M, firing a five-hit shutout to defeat the Aggies -- one walk, one strikeout in the 4-0 win to clinch the CWS berth
- Earned NCAA Baton Rouge Regional championship-game win over Charleston (June 6), limiting the Cougars to three runs on 12 hits in seven innings with no walks and two Ks
- Defeated Central Florida (Feb. 14) in his first outing in 20 months, limiting the Knights to one run on five hits in five innings with two walks and one strikeout
- Started the series opener vs. Vanderbilt (5/15) -- his first league start since 3/20 at S. Carolina -- limited the Commodores to one run on seven hits in 6.1 innings with 3 BB, 1 K
- Pitched brilliantly in SEC Tournament vs. Georgia (May 27), allowing one run on seven hits in 8.1 innings with one walk and two strikeouts

**Mestepey's LSU Career Highs**

Innings: 10.0 at Tulane (6/1/01)  
Strikeouts: 8 vs. Long Beach State (3/2/02)  
Hits Allowed: 13 vs. Minnesota (5/25/01)  
Runs: 8 (three times)  
Earned Runs: 8 vs. Minnesota (5/25/01)  
Walks: 5 at Ole Miss (3/23/02)



**7**  
**Ivan Naccarata**

Infielder  
5-10, 185, L-R, Sr., 1L  
Longueuil, Quebec (Chipola JC)

- Joined the LSU program in January, 2003, and made an immediate impact as the Tigers' starting third baseman; starting at second base for LSU this season
- Played for three weeks during the fall of 2003 with the Canadian National Team
- Fluent in four languages - English, French, Slovenian and Italian
- Career high seven RBI and two homers in win over Miss. State (3/28)
- Launched two-run pinch-hit homer in ninth inning to give LSU a 5-3 win at Auburn (April 3)
- .417 (5-for-12) in Kentucky series with five RBI and three runs

**Naccarata's LSU Career Highs**

At-Bats: 6 (four occasions)  
Hits: 4 vs. Tulane (5/31/03); vs. Arkansas (4/10/04)  
Runs Scored: 4 (twice)  
Doubles: 2 (twice)  
Triples: 1 (five occasions)  
Home Runs: 2 vs. Miss. State (3/28/04)  
RBI: 7 vs. Miss. State (3/28/04)  
Stolen Bases: 2 vs. Tulane (4/27/04)



**12**  
**Ryan Patterson**

Outfielder  
5-11, 200, R-R, Jr., 1L  
Rowlett, Texas (Texarkana College)

- 2004 second-team all-SEC selection; earned first-team all-SEC honors in 2003
- Ranked No. 2 in the SEC in doubles (22); No. 3 in runs scored (69), No. 3 in hits (97), No. 3 in total bases (165) and No. 7 in RBI (64)
- 15-game hitting streak from April 4-27; batting .414 (29-for-70) with five doubles, two triples, five homers, 21 RBI and 20 runs
- Named SEC Player of the Week May 24 after leading LSU to series win at Ole Miss -- 7-for-15 in the series with one double, three homers, six RBI and four runs

**Patterson's LSU Career Highs**

At-Bats: 6 (several occasions)  
Hits: 4 (four times, most recently at Ole Miss (5/23/04))  
Runs Scored: 4 vs. Mississippi State (5/24/03); at Southern (4/20/04)  
Doubles: 2 (four occasions)  
Triples: 1 (three occasions)  
Home Runs: 2 at Ole Miss (5/23/04)  
RBI: 5 (three occasions, most recently at Ole Miss (5/23/04))



**27**  
**Greg Smith**

LH Pitcher  
6-0, 190, L-L, So., 1L  
Alexandria, La. (Alexandria HS)

- Talented hurler who has developed into the Tigers' left-handed closer this season
- Has allowed just eight runs in 29.2 innings this season
- First career victory at South Carolina (March 19); worked two scoreless innings, allowing one hit with four strikeouts
- Earned save at Auburn (April 4), preserving a 3-2 win by inducing a game-ending double play grounder with runners at the corners
- Relief win vs. Georgia (April 16); fired 1.2 shutout innings with one hit, no walks, one K

**G. Smith's LSU Career Highs**

Innings: 4.1 vs. Tulane (4/29/03)  
Strikeouts: 5 at Mississippi State (5/2/03)  
Hits Allowed: 8 at Long Beach State (2/28/03)  
Runs: 8 at Long Beach State (2/28/03)  
Earned Runs: 5 vs. Loyola-New Orleans (5/6/03)  
Walks: 3 vs. Arkansas (4/10/04)



**43**  
**Nick Stavinocha**

DH/Catcher  
6-1, 220, R-R, Jr., JC  
Houston, Texas (San Jacinto JC)

- Played two seasons at San Jacinto Junior College in Houston where he recorded 37 career home runs and 132 RBI
- Began his collegiate career in 2000 as a long snapper for the Univ. of Houston football team
- 2004 SEC Academic Honor Roll member (management major)
- Tied LSU record with three 2Bs in regional win vs. Southern Miss (June 5); named to regional all-tournament team
- Helped lead LSU to DH sweep of Alabama (May 2), as he was 3-for-7 with one double and three RBI; game-winning single in bottom of eighth inning (7-inn. game) of Game 1 vs. Bama
- Named Louisiana Player of the Week on May 11 after leading LSU to series win at Kentucky (May 7-9); batted .583 (7-for-12) in the UK series with one 2B, one HR, four RBI and four runs

**Stavinocha's LSU Career Highs**

At-Bats: 5 (several occasions)  
Hits: 3 on four occasions, most recently vs. Southern Miss (6/5/04)  
Runs Scored: 3 on three occasions, most recently at Ole Miss (5/22/04)  
Doubles: 3 vs. Southern Miss (6/5/04)  
Triples: 1 at Southern (4/20/04)  
Home Runs: 1 (several occasions)  
RBI: 5 at Southern (4/20/04)  
Stolen Bases: 1 (three occasions)



**16**  
**Jon Zeringue**

Outfielder  
6-2, 205, R-R, Jr., 2L  
Thibodaux, La. (E.D. White HS)

- 2004 first-team all-America selection by USA TODAY/Sports Weekly
- 2004 SEC Co-Player of the Year (with 1B/LHP Stephen Head of Ole Miss)
- 2004 second-round selection of the Arizona Diamondbacks in the MLB draft
- Solo HR in regional win over Southern Miss (June 5); named to regional all-tournament team
- No. 3 in the SEC in batting average (.387), No. 4 in hits (96), No. 6 in OB percentage (.442), No. 6 in SLUG percentage (.625), No. 6 in total bases (155), No. 7 in doubles (19)
- 3-for-5 with 2 homers, 2 RBI and 3 runs at South Carolina (March 21)
- Tied LSU single-game record with five hits (2 2B, 3 1B) vs. Vanderbilt (May 15); delivered game-winning single in bottom of 11th inning in 7-6 LSU victory

**Zeringue's LSU Career Highs**

At-Bats: 6 on three occasions, most recently vs. Vanderbilt (5/15/04)  
Hits: 5 vs. Vanderbilt (5/15/04)  
Runs Scored: 4 vs. Baylor (6/8/03)  
Doubles: 2 (four occasions, most recently vs. Vanderbilt (5/15/04))  
Triples: 1 vs. Houston (3/7/04); vs. Georgia (4/17/04)  
Home Runs: 2 (twice; most recently at South Carolina (3/21/04))  
RBI: 5 vs. Miss. State (3/27/04)  
Stolen Bases: 2 vs. SE Louisiana (4/23/03)

2004 LSU Baseball  
Overall Statistics for LSU (as of Jun 14, 2004)  
(All games Sorted by Batting avg)

Record: 46-17 Home: 25-9 Away: 19-6 Neutral: 2-2 SEC: 18-12

Player	AVG	GP-GS	AB	R	H	2B	3B	HR	RBI	TB	SLG%	BB	HBP	SO	GDP	OB%	SF	SH	SB-ATT	PO	A	E	FLD%
1 J.C. Holt.....	.390	63-63	264	70	103	18	3	6	51	145	.549	31	4	39	2	.460	1	8	20-22	156	1	2	.987
16 Jon Zeringue.....	.387	63-63	248	56	96	19	2	12	55	155	.625	26	4	36	8	.442	7	0	3-5	115	5	1	.992
3 Blake Gill.....	.344	60-58	227	40	78	11	4	5	41	112	.493	25	1	18	7	.405	4	5	3-4	97	178	22	.926
12 Ryan Patterson...	.340	63-63	285	69	97	22	2	14	64	165	.579	14	6	43	7	.382	1	3	6-7	119	6	3	.977
43 Nick Stavinoaha...	.335	57-56	224	46	75	17	1	8	42	118	.527	16	4	30	5	.380	6	0	3-5	0	0	0	.000
14 Matt Liuzza.....	.330	58-58	221	36	73	14	0	9	45	114	.516	22	4	32	7	.393	5	4	0-0	306	43	4	.989
25 Will Harris.....	.329	53-46	164	36	54	9	0	7	39	84	.512	21	2	29	8	.412	0	2	0-1	443	25	5	.989
21 Clay Harris.....	.295	63-63	241	49	71	13	3	7	51	111	.461	33	5	27	8	.381	7	2	2-2	191	97	6	.980
7 Ivan Naccarata...	.277	57-48	195	46	54	6	0	5	33	75	.385	29	3	30	4	.376	2	0	5-6	69	130	10	.952
-----																							
10 Ty Jensen.....	.375	16-0	8	2	3	0	0	0	4	3	.375	1	1	2	0	.500	0	0	0-0	18	1	0	1.000
9 Dustin Weaver....	.347	26-10	49	8	17	3	0	1	12	23	.469	3	1	3	2	.382	2	0	0-0	66	2	0	1.000
30 Bobby DiLiberto..	.333	13-1	18	4	6	1	0	3	8	16	.889	0	0	4	1	.333	0	0	0-0	6	9	1	.938
38 Brad Bass.....	.333	5-0	6	0	2	0	0	0	2	2	.333	0	0	1	1	.333	0	0	0-0	3	0	0	1.000
2 Derek Hebert.....	.278	32-21	90	22	25	5	0	1	6	33	.367	6	0	18	3	.320	1	1	1-1	43	74	8	.936
34 Matt Horwath.....	.246	26-17	57	11	14	4	0	1	9	21	.368	11	5	16	0	.411	0	2	0-1	20	55	6	.926
32 Rhatt Buteau.....	.000	21-0	6	10	0	0	0	0	1	0	.000	5	0	3	0	.455	0	0	0-1	2	0	0	1.000
52 Will Davis.....	.000	2-0	1	0	0	0	0	0	0	0	.000	0	0	1	0	.000	0	0	0-0	0	0	0	.000
35 Justin Meier.....	.000	1-0	0	1	0	0	0	0	0	0	.000	0	0	0	0	.000	0	0	0-0	10	12	3	.880
Totals.....	.333	63-63	2304	506	768	142	15	79	463	1177	.511	243	40	332	63	.401	36	27	43-55	1693	727	76	.970
Opponents.....	.270	63-63	2199	269	593	107	10	47	244	861	.392	153	47	388	55	.328	16	31	49-65	1640	666	93	.961

LOB - Team (505), Opp (484). DPs turned - Team (62), Opp (74). CI - Team (0), Opp (1). IBB - Team (4), Holt 2, Patterson 1, Liuzza 1, Opp (6). Picked off - Patterson 3, Holt 2, Gill 1, Naccarata 1, Harris, W. 1, Harris, C. 1, Hebert 1.

(All games Sorted by Earned run avg)

Player	ERA	W-L	APP	GS	CG	SHO/CBO	SV	IP	H	R	ER	BB	SO	2B	3B	HR	AB	B/Avg	WP	HBP	BK	SFA	SHA
13 Clay Dirks.....	3.35	8-2	16	13	2	1/1	1	80.2	79	40	30	17	66	19	0	5	317	.249	2	11	3	0	7
46 Lane Mestepey....	3.43	7-3	19	13	3	1/0	0	94.1	107	41	36	26	41	12	1	11	371	.288	3	5	0	1	5
41 Nate Bumstead....	3.59	10-3	15	14	2	0/0	0	90.1	101	48	36	19	52	13	1	10	362	.279	5	3	1	1	1
35 Justin Meier.....	3.75	6-2	17	15	1	1/0	0	100.2	118	56	42	26	75	25	2	6	401	.294	7	15	0	7	8
33 Jason Determann..	3.93	6-4	19	5	0	0/1	1	71.0	68	34	31	15	45	12	3	8	264	.258	4	5	3	6	5
-----																							
29 Jordan Faircloth.	2.40	3-3	25	0	0	0/0	4	56.1	51	16	15	11	40	11	0	2	202	.252	1	5	0	0	3
27 Greg Smith.....	2.43	2-0	21	0	0	0/1	1	29.2	26	8	8	12	33	7	0	1	115	.226	5	1	0	0	0
25 Will Harris.....	3.00	0-0	3	0	0	0/0	0	3.0	4	1	1	3	2	1	0	0	13	.308	0	1	0	0	0
28 Michael Bonura...	4.59	4-0	13	3	0	0/1	0	33.1	33	20	17	22	29	4	2	4	130	.254	4	1	1	1	2
6 Collin Smith.....	9.00	0-0	4	0	0	0/0	0	5.0	6	5	5	2	5	3	1	0	24	.250	1	0	0	0	0
Totals.....	3.51	46-17	63	63	8	4/1	7	564.1	593	269	220	153	388	107	10	47	2199	.270	32	47	8	16	31
Opponents.....	7.15	17-46	63	63	3	3/2	5	546.2	768	506	434	243	332	142	15	79	2304	.333	51	40	9	36	27

PB - Team (8), Liuzza 6, Weaver 2, Opp (15). Pickoffs - Team (6), Mestepey 3, Liuzza 1, Determann 1, Faircloth 1, Opp (10). SBA/ATT - Liuzza (40-52), Bumstead (10-13), Meier (9-13), Determann (7-10), Weaver (9-9), Mestepey (7-8), Dirks (6-7), Faircloth (4-7), Smith, G. (3-3), Bonura (1-2), Harris, W. (1-1), Smith, C. (1-1).

2004 LSU Baseball  
Overall Statistics for LSU (as of Jun 14, 2004)  
(All games Sorted by Fielding pct)

Player	C	PO	A	E	FLD%	DPs	SBA	CSB	SBA%	PB	CI
9 Dustin Weaver....	68	66	2	0	1.000	0	9	0	1.000	2	0
41 Nate Bumstead....	25	11	14	0	1.000	1	10	3	.769	0	0
10 Ty Jensen.....	19	18	1	0	1.000	0	0	0	---	0	0
33 Jason Determann..	15	4	11	0	1.000	0	7	3	.700	0	0
27 Greg Smith.....	5	1	4	0	1.000	1	3	0	1.000	0	0
38 Brad Bass.....	3	3	0	0	1.000	0	0	0	---	0	0
32 Rhett Buteau.....	2	2	0	0	1.000	0	0	0	---	0	0
16 Jon Zeringue.....	121	115	5	1	.992	0	0	0	---	0	0
25 Will Harris.....	473	443	25	5	.989	45	1	0	1.000	0	0
14 Matt Liuzza.....	353	306	43	4	.989	2	40	12	.769	6	0
1 J.C. Holt.....	159	156	1	2	.987	1	0	0	---	0	0
21 Clay Harris.....	294	191	97	6	.980	21	0	0	---	0	0
12 Ryan Patterson...	128	119	6	3	.977	1	0	0	---	0	0
46 Lane Mestepey....	31	4	26	1	.968	1	7	1	.875	0	0
29 Jordan Faircloth.	26	6	19	1	.962	3	4	3	.571	0	0
7 Ivan Naccarata...	209	69	130	10	.952	19	0	0	---	0	0
30 Bobby DiLiberto..	16	6	9	1	.938	1	0	0	---	0	0
2 Derek Hebert.....	125	43	74	8	.936	15	0	0	---	0	0
3 Blake Gill.....	297	97	178	22	.926	40	0	0	---	0	0
34 Matt Horwath.....	81	20	55	6	.926	8	0	0	---	0	0
35 Justin Meier.....	25	10	12	3	.880	0	9	4	.692	0	0
13 Clay Dirks.....	16	1	13	2	.875	0	6	1	.857	0	0
28 Michael Bonura...	5	2	2	1	.800	0	1	1	.500	0	0
43 Nick Stavinoha...	0	0	0	0	.000	0	0	0	---	0	0
52 Will Davis.....	0	0	0	0	.000	0	0	0	---	0	0
6 Collin Smith.....	0	0	0	0	.000	0	1	0	1.000	0	0
Totals.....	2496	1693	727	76	.970	62	49	16	.754	8	0
Opponents.....	2399	1640	666	93	.961	74	43	12	.782	15	1

2004 LSU Baseball  
Game Results for LSU (as of Jun 14, 2004)  
(All games)

Game date	Opposing team	Score	r	h	e	r	h	e	Inns	Overall	SEC	Pitcher of record	Attend	Time
			/											
Feb 13, 2004	at UCF	W 4-3	4	7	0	3	7	3	(10)	1- 0- 0	0- 0- 0	Determann (W 1-0)	1922	3:15
Feb 14, 2004	at UCF	W 17-4	17	19	1	4	7	2	9	2- 0- 0	0- 0- 0	Mestepey (W 1-0)	1642	3:20
Feb 15, 2004	at UCF	5-6 L	5	8	1	6	10	1	(10)	2- 1- 0	0- 0- 0	Faircloth (L 0-1)	1575	3:27
Feb 17, 2004	Louisiana-Monroe	W 7-1	7	11	1	1	6	2	9	3- 1- 0	0- 0- 0	Bonura (W 1-0)	7643	2:46
Feb 20, 2004	Jacksonville State	W 6-1	6	10	0	1	6	4	9	4- 1- 0	0- 0- 0	Meier (W 1-0)	7448	2:41
Feb 21, 2004	Jacksonville State	W 14-2	14	14	1	2	8	3	9	5- 1- 0	0- 0- 0	Mestepey (W 2-0)	7528	2:44
Feb 22, 2004	Jacksonville State	W 19-1	19	20	3	1	4	2	7	6- 1- 0	0- 0- 0	Dirks (W 1-0)	7494	2:30
Feb 27, 2004	Texas State	W 10-1	10	15	2	1	6	2	9	7- 1- 0	0- 0- 0	Meier (W 2-0)	7748	2:35
Feb 28, 2004	Texas State	W 2-1	2	6	1	1	8	1	9	8- 1- 0	0- 0- 0	Determann (W 2-0)	8360	2:18
Feb 29, 2004	Texas State	W 13-2	13	16	0	2	7	2	9	9- 1- 0	0- 0- 0	Bumstead (W 1-0)	8103	2:32
Mar 02, 2004	at #8 Tulane	W 6-0	6	14	0	0	4	0	9	10- 1- 0	0- 0- 0	Dirks (W 2-0)	10916	2:45
Mar 05, 2004	Houston	W 9-3	9	14	0	3	12	3	9	11- 1- 0	0- 0- 0	Meier (W 3-0)	7698	3:23
Mar 06, 2004	Houston	5-10 L	5	13	4	10	14	0	9	11- 2- 0	0- 0- 0	Mestepey (L 2-1)	8683	3:01
Mar 07, 2004	Houston	W 8-2	8	15	0	2	10	0	9	12- 2- 0	0- 0- 0	Bumstead (W 2-0)	8177	2:33
Mar 09, 2004	at Louisiana-Monroe	W 6-1	6	12	0	1	4	2	9	13- 2- 0	0- 0- 0	Dirks (W 3-0)	3651	2:14
Mar 12, 2004	at Southeastern La.	W 7-1	7	12	1	1	6	1	9	14- 2- 0	0- 0- 0	Meier (W 4-0)	8308	2:20
Mar 13, 2004	Southeastern La.	W 5-1	5	11	1	1	12	3	9	15- 2- 0	0- 0- 0	Mestepey (W 3-1)	7978	2:46
Mar 16, 2004	New Orleans	W 14-0	14	12	0	0	3	2	7	16- 2- 0	0- 0- 0	Dirks (W 4-0)	7798	2:09
*Mar 19, 2004	at #3 South Carolina	W 6-3	6	12	2	3	8	0	(11)	17- 2- 0	1- 0- 0	Smith, G. (W 1-0)	5481	2:56
*Mar 20, 2004	at #3 South Carolina	5-12 L	5	10	1	12	11	2	9	17- 3- 0	1- 1- 0	Faircloth (L 0-2)	5908	2:25
*Mar 21, 2004	at #3 South Carolina	W 12-7	12	18	1	7	9	0	9	18- 3- 0	2- 1- 0	Bumstead (W 3-0)	5982	2:49
Mar 23, 2004	at Centenary	W 9-3	9	12	0	3	11	2	9	19- 3- 0	2- 1- 0	Bonura (W 2-0)	4178	2:40
*Mar 26, 2004	#24 Miss. State	3-7 L	3	6	1	7	14	1	9	19- 4- 0	2- 2- 0	Meier (L 4-1)	8521	2:42
*Mar 27, 2004	#24 Miss. State	W 11-6	11	13	2	6	9	1	9	20- 4- 0	3- 2- 0	Dirks (W 5-0)	8289	2:32
*Mar 28, 2004	#24 Miss. State	W 14-3	14	16	3	3	11	1	9	21- 4- 0	4- 2- 0	Bumstead (W 4-0)	8040	2:20
Mar 30, 2004	at New Orleans	W 12-5	12	15	0	5	10	2	9	22- 4- 0	4- 2- 0	Bonura (W 3-0)	2655	2:55
*Apr 02, 2004	at #11 Auburn	6-7 L	6	11	3	7	17	0	(10)	22- 5- 0	4- 3- 0	Faircloth (L 0-3)	3631	3:11
*Apr 03, 2004	at #11 Auburn	W 5-3	5	9	0	3	5	3	9	23- 5- 0	5- 3- 0	Dirks (W 6-0)	3981	2:11
*Apr 04, 2004	at #11 Auburn	W 3-2	3	4	0	2	5	3	9	24- 5- 0	6- 3- 0	Bumstead (W 5-0)	3881	2:39
Apr 06, 2004	#12 Tulane	0-1 L	0	4	1	1	7	0	9	24- 6- 0	6- 3- 0	Determann (L 2-1)	7840	2:32
*Apr 09, 2004	Arkansas	8-11 L	8	13	4	11	14	2	9	24- 7- 0	6- 4- 0	Meier (L 4-2)	8254	2:59
*Apr 10, 2004	Arkansas	10-11 L	10	17	3	11	14	4	(10)	24- 8- 0	6- 5- 0	Determann (L 2-2)	7888	4:00
*Apr 11, 2004	Arkansas	5-7 L	5	13	2	7	13	1	9	24- 9- 0	6- 6- 0	Bumstead (L 5-1)	7282	2:41
Apr 13, 2004	Nicholls State	W 9-3	9	13	3	3	9	1	9	25- 9- 0	6- 6- 0	Meier (W 5-2)	8195	2:38
Apr 14, 2004	vs Southeastern La.	W 9-3	9	11	1	3	7	1	9	26- 9- 0	6- 6- 0	Mestepey (W 4-1)	7048	2:42
*Apr 16, 2004	Georgia	W 6-5	6	10	0	5	9	2	(10)	27- 9- 0	7- 6- 0	Smith, G. (W 2-0)	8273	2:36
*Apr 17, 2004	Georgia	W 10-2	10	14	1	2	9	1	9	28- 9- 0	8- 6- 0	Dirks (W 7-0)	8043	2:41
*Apr 18, 2004	Georgia	4-12 L	4	13	3	12	17	2	9	28-10- 0	8- 7- 0	Bumstead (L 5-2)	8102	2:35
Apr 20, 2004	at Southern	W 21-10	21	18	1	10	15	2	9	29-10- 0	8- 7- 0	Faircloth (W 1-3)	1200	3:26
*Apr 23, 2004	at #10 Tennessee	6-8 L	6	9	2	8	16	6	9	29-11- 0	8- 8- 0	Determann (L 2-3)	2908	3:16
*Apr 24, 2004	at #10 Tennessee	W 11-5	11	12	5	5	10	0	9	30-11- 0	9- 8- 0	Dirks (W 8-0)	3128	3:08
*Apr 25, 2004	at #10 Tennessee	W 11-1	11	15	0	1	5	2	9	31-11- 0	10- 8- 0	Bumstead (W 6-2)	2185	2:23
Apr 27, 2004	vs #13 Tulane	W 9-5	9	15	1	5	11	3	9	32-11- 0	10- 8- 0	Mestepey (W 5-1)	21343	2:51
*May 01, 2004	Alabama	2-8 L	2	5	2	8	12	0	9	32-12- 0	10- 9- 0	Dirks (L 8-1)	7492	2:26
*May 02, 2004	Alabama	W 2-1	2	4	0	1	8	1	( 8)	33-12- 0	11- 9- 0	Determann (W 3-3)	7640	2:28
*May 02, 2004	Alabama	W 9-2	9	11	0	2	10	2	7	34-12- 0	12- 9- 0	Bumstead (W 7-2)	7492	2:03
*May 07, 2004	at Kentucky	3-10 L	3	9	1	10	11	1	9	34-13- 0	12-10- 0	Dirks (L 8-2)	713	2:08
*May 08, 2004	at Kentucky	W 11-8	11	15	1	8	9	1	9	35-13- 0	13-10- 0	Faircloth (W 2-3)	552	2:59
*May 09, 2004	at Kentucky	W 15-4	15	23	0	4	8	1	9	36-13- 0	14-10- 0	Bumstead (W 8-2)	548	2:42
*May 15, 2004	Vanderbilt	W 3-2	3	8	2	2	10	1	(10)	37-13- 0	15-10- 0	Faircloth (W 3-3)	7549	2:20
*May 15, 2004	Vanderbilt	W 7-6	7	15	1	6	14	0	(11)	38-13- 0	16-10- 0	Determann (W 4-3)	7794	3:21
*May 16, 2004	Vanderbilt	0-8 L	0	6	3	8	12	0	9	38-14- 0	16-11- 0	Bumstead (L 8-3)	8099	2:19
May 19, 2004	Southeastern La.	W 16-2	16	17	1	2	9	2	8	39-14- 0	16-11- 0	Bonura (W 4-0)	8227	2:47
*May 21, 2004	at #9 Ole Miss	6-7 L	6	12	0	7	10	0	9	39-15- 0	16-12- 0	Mestepey (L 5-2)	7670	2:06
*May 22, 2004	at #9 Ole Miss	W 11-4	11	15	3	4	7	1	9	40-15- 0	17-12- 0	Bumstead (W 9-3)	8574	2:51
*May 23, 2004	at #9 Ole Miss	W 14-6	14	22	0	6	13	2	9	41-15- 0	18-12- 0	Determann (W 5-3)	7587	3:05
#May 26, 2004	vs #21 Florida	4-5 L	4	11	0	5	9	1	(10)	41-16- 0	18-12- 0	Determann (L 5-4)	5366	3:07
#May 27, 2004	vs #10 Georgia	0-1 L	0	4	1	1	7	0	9	41-17- 0	18-12- 0	Mestepey (L 5-3)	6428	1:57
&Jun 04, 2004	Army	W 9-0	9	15	0	0	7	2	9	42-17- 0	18-12- 0	Meier (W 6-2)	6032	2:51
&Jun 05, 2004	#21 Southern Mississ	W 6-2	6	8	1	2	8	0	9	43-17- 0	18-12- 0	Bumstead (W 10-3)	6775	2:12
&Jun 06, 2004	at #30 Coll. of Charles	W 11-3	11	14	0	3	13	1	9	44-17- 0	18-12- 0	Mestepey (W 6-3)	6298	2:47
%Jun 12, 2004	#14 Texas A&M	W 11-8	11	17	2	8	11	1	9	45-17- 0	18-12- 0	Determann (W 6-4)	7598	3:39
%Jun 13, 2004	at #14 Texas A&M	W 4-0	4	5	2	0	5	1	9	46-17- 0	18-12- 0	Mestepey (W 7-3)	7607	2:36

( ) extra inning game

2004 LSU Baseball  
Overall Statistics for LSU (as of Jun 14, 2004)  
(NCAA TOURNAMENT GAMES Sorted by Batting avg)

Record: 5-0 Home: 3-0 Away: 2-0 SEC: 0-0

Player	AVG	GP-GS	AB	R	H	2B	3B	HR	RBI	TB	SLG%	BB	HBP	SO	GDP	OB%	SF	SH	SB-ATT	PO	A	E	FLD%
14 Matt Liuzza.....	.500	5-5	16	5	8	1	0	0	1	9	.563	6	1	1	0	.652	0	0	0-0	26	2	1	.966
25 Will Harris.....	.474	5-5	19	5	9	2	0	1	5	14	.737	2	0	1	1	.524	0	0	0-0	57	6	0	1.000
3 Blake Gill.....	.400	5-5	20	3	8	1	1	1	8	14	.700	3	0	3	1	.478	0	0	0-0	6	27	2	.943
12 Ryan Patterson...	.318	5-5	22	4	7	1	0	1	4	11	.500	1	1	4	0	.375	0	0	0-0	6	0	0	1.000
1 J.C. Holt.....	.318	5-5	22	4	7	1	0	1	8	11	.500	2	0	3	0	.375	0	1	2-2	17	0	0	1.000
16 Jon Zeringue.....	.286	5-5	21	4	6	0	0	1	3	9	.429	2	0	5	1	.333	1	0	0-1	10	0	0	1.000
7 Ivan Naccarata...	.263	5-5	19	4	5	0	0	1	4	8	.421	3	1	5	0	.391	0	0	0-0	5	10	2	.882
43 Nick Stavinoha...	.238	5-5	21	5	5	3	0	0	1	8	.381	2	1	3	0	.333	0	0	0-0	0	0	0	.000
21 Clay Harris.....	.200	5-5	20	5	4	0	0	0	5	4	.200	1	1	2	0	.261	1	0	0-0	1	10	0	1.000
-----																							
32 Rhett Buteau.....	.000	3-0	0	2	0	0	0	0	0	0	.000	0	0	0	0	.000	0	0	0-0	0	0	0	.000
9 Dustin Weaver....	.000	3-0	0	0	0	0	0	0	0	0	.000	0	0	0	0	.000	0	0	0-0	1	0	0	1.000
Totals.....	.328	5-5	180	41	59	9	1	6	39	88	.489	22	5	27	3	.411	2	1	2-3	135	63	5	.975
Opponents.....	.253	5-5	174	13	44	10	0	2	12	60	.345	8	8	24	5	.314	1	2	3-4	126	58	5	.974

LOB - Team (43), Opp (45). DPs turned - Team (5), Opp (3). Picked off - Harris, W. 1.

(NCAA TOURNAMENT GAMES Sorted by Earned run avg)

Player	ERA	W-L	APP	GS	CG	SHO/CBO	SV	IP	H	R	ER	BB	SO	2B	3B	HR	AB	B/Avg	WP	HBP	BK	SFA	SHA
-----																							
35 Justin Meier.....	0.00	1-0	1	1	1	1/0	0	9.0	7	0	0	0	9	2	0	0	32	.219	0	4	0	0	1
29 Jordan Faircloth.	0.00	0-0	2	0	0	0/0	1	4.1	3	0	0	2	2	0	0	0	14	.214	0	0	0	0	0
46 Lane Mestepey....	1.69	2-0	2	2	1	1/0	0	16.0	17	3	3	1	3	3	0	0	62	.274	1	3	0	1	0
41 Nate Bumstead....	2.79	1-0	2	2	1	0/0	0	9.2	11	7	3	4	7	3	0	1	41	.268	1	0	0	0	1
33 Jason Determann..	3.00	1-0	1	0	0	0/0	0	6.0	6	3	2	1	3	2	0	1	25	.240	0	1	0	0	0
Totals.....	1.60	5-0	5	5	3	2/0	1	45.0	44	13	8	8	24	10	0	2	174	.253	2	8	0	1	2
Opponents.....	8.14	0-5	5	5	0	0/0	0	42.0	59	41	38	22	27	9	1	6	180	.328	4	5	2	2	1

PB - Team (0), Opp (1). Pickoffs - Team (0), Opp (1). SBA/ATT - Liuzza (3-3), Mestepey (2-3), Determann (1-1).

2004 LSU Baseball  
Overall Statistics for LSU (as of Jun 14, 2004)  
(NCAA SUPER REGIONAL VS. TEXAS A&M Sorted by Batting avg)

Record: 2-0 Home: 1-0 Away: 1-0 SEC: 0-0

Player	AVG	GP-GS	AB	R	H	2B	3B	HR	RBI	TB	SLG%	BB	HBP	SO	GDP	OB%	SF	SH	SB-ATT	PO	A	E	FLD%
14 Matt Liuzza.....	.500	2-2	6	1	3	0	0	0	0	3	.500	2	1	0	0	.667	0	0	0-0	8	0	1	.889
12 Ryan Patterson...	.333	2-2	9	2	3	1	0	1	3	7	.778	0	0	2	0	.333	0	0	0-0	2	0	0	1.000
16 Jon Zeringue.....	.333	2-2	9	2	3	0	0	0	1	3	.333	0	0	1	1	.333	0	0	0-0	3	0	0	1.000
3 Blake Gill.....	.333	2-2	9	1	3	0	0	0	1	3	.333	0	0	3	0	.333	0	0	0-0	3	10	2	.867
25 Will Harris.....	.333	2-2	9	2	3	0	0	1	4	6	.667	0	0	0	1	.333	0	0	0-0	24	1	0	1.000
7 Ivan Naccarata...	.333	2-2	6	2	2	0	0	0	1	2	.333	2	1	2	0	.556	0	0	0-0	3	6	1	.900
21 Clay Harris.....	.286	2-2	7	1	2	0	0	0	2	2	.286	0	1	1	0	.333	1	0	0-0	1	5	0	1.000
1 J.C. Holt.....	.222	2-2	9	1	2	0	0	1	3	5	.556	0	0	2	0	.222	0	1	0-0	10	0	0	1.000
43 Nick Stavinoha...	.143	2-2	7	2	1	0	0	0	0	1	.143	1	1	3	0	.333	0	0	0-0	0	0	0	.000
-----																							
32 Rhett Buteau.....	.000	1-0	0	1	0	0	0	0	0	0	.000	0	0	0	0	.000	0	0	0-0	0	0	0	.000
9 Dustin Weaver....	.000	1-0	0	0	0	0	0	0	0	0	.000	0	0	0	0	.000	0	0	0-0	0	0	0	.000
Totals.....	.310	2-2	71	15	22	1	0	3	15	32	.451	5	4	14	2	.383	1	1	0-0	54	27	4	.953
Opponents.....	.225	2-2	71	8	16	3	0	1	7	22	.310	5	2	7	1	.295	0	0	3-4	51	27	2	.975

LOB - Team (16), Opp (16). DPs turned - Team (1), Opp (2).

(NCAA SUPER REGIONAL VS. TEXAS A&M Sorted by Earned run avg)

Player	ERA	W-L	APP	GS	CG	SHO/CBO	SV	IP	H	R	ER	BB	SO	2B	3B	HR	AB	B/Avg	WP	HBP	BK	SFA	SHA
-----																							
46 Lane Mestepey....	0.00	1-0	1	1	1	1/0	0	9.0	5	0	0	1	1	1	0	0	32	.156	0	1	0	0	0
29 Jordan Faircloth.	0.00	0-0	1	0	0	0/0	1	2.1	2	0	0	1	2	0	0	0	8	.250	0	0	0	0	0
33 Jason Determann..	3.00	1-0	1	0	0	0/0	0	6.0	6	3	2	1	3	2	0	1	25	.240	0	1	0	0	0
41 Nate Bumstead....	13.50	0-0	1	1	0	0/0	0	0.2	3	5	1	2	1	0	0	0	6	.500	0	0	0	0	0
Totals.....	1.50	2-0	2	2	1	1/0	1	18.0	16	8	3	5	7	3	0	1	71	.225	0	2	0	0	0
Opponents.....	7.94	0-2	2	2	0	0/0	0	17.0	22	15	15	5	14	1	0	3	71	.310	0	4	0	1	1

SBA/ATT - Mestepey (2-3), Liuzza (3-3), Determann (1-1).

2004 LSU Baseball  
Overall Statistics for LSU (as of Jun 14, 2004)  
(POSTSEASON GAMES Sorted by Batting avg)

Record: 5-2 Home: 3-0 Away: 2-0 Neutral: 0-2 SEC: 0-0

Player	AVG	GP-GS	AB	R	H	2B	3B	HR	RBI	TB	SLG%	BB	HBP	SO	GDP	OB%	SF	SH	SB-ATT	PO	A	E	FLD%
14 Matt Liuzza.....	.409	7-7	22	5	9	1	0	0	1	10	.455	7	1	3	0	.567	0	1	0-0	37	5	1	.977
25 Will Harris.....	.400	7-7	25	5	10	2	0	1	5	15	.600	3	0	5	2	.464	0	0	0-0	79	6	0	1.000
3 Blake Gill.....	.393	7-7	28	3	11	1	1	1	8	17	.607	3	0	4	1	.452	0	1	0-0	8	35	3	.935
12 Ryan Patterson...	.333	7-7	30	6	10	2	0	1	5	15	.500	1	2	5	1	.394	0	0	0-0	10	0	0	1.000
1 J.C. Holt.....	.300	7-7	30	6	9	2	0	1	8	14	.467	3	0	4	0	.364	0	1	2-2	25	0	0	1.000
16 Jon Zeringue.....	.267	7-7	30	4	8	0	0	1	4	11	.367	2	0	6	2	.303	1	0	0-1	13	1	0	1.000
43 Nick Stavinoha...	.259	7-7	27	5	7	3	0	0	1	10	.370	4	1	3	0	.375	0	0	0-0	0	0	0	.000
7 Ivan Naccarata...	.231	7-7	26	4	6	1	0	1	5	10	.385	5	1	5	0	.375	0	0	0-0	8	19	2	.931
21 Clay Harris.....	.154	7-7	26	5	4	0	0	0	5	4	.154	1	2	2	2	.233	1	0	0-0	3	13	0	1.000
-----																							
9 Dustin Weaver....	.000	3-0	0	0	0	0	0	0	0	0	.000	0	0	0	0	.000	0	0	0-0	1	0	0	1.000
34 Matt Horwath.....	.000	1-0	0	0	0	0	0	0	0	0	.000	0	0	0	0	.000	0	0	0-0	0	0	0	.000
32 Rhett Buteau.....	.000	4-0	0	2	0	0	0	0	0	0	.000	0	0	0	0	.000	0	0	0-1	0	0	0	.000
Totals.....	.303	7-7	244	45	74	12	1	6	42	106	.434	29	7	37	8	.390	2	3	2-4	190	89	6	.979
Opponents.....	.251	7-7	239	19	60	14	1	3	17	85	.356	12	8	38	7	.305	3	5	5-6	183	92	6	.979

LOB - Team (57), Opp (58). DPs turned - Team (7), Opp (8). IBB - Team (0), Opp (2). Picked off - Naccarata 1, Harris, W. 1.

(POSTSEASON GAMES Sorted by Earned run avg)

Player	ERA	W-L	APP	GS	CG	SHO/CBO	SV	IP	H	R	ER	BB	SO	2B	3B	HR	AB	B/Avg	WP	HBP	BK	SFA	SHA
-----																							
29 Jordan Faircloth.	0.00	0-0	3	0	0	0/0	1	5.0	3	0	0	2	2	0	0	0	16	.188	1	0	0	0	0
46 Lane Mestepey....	1.48	2-1	3	3	2	1/0	0	24.1	24	4	4	2	5	4	0	0	93	.258	1	3	0	1	1
35 Justin Meier.....	2.35	1-0	2	2	1	1/0	0	15.1	15	4	4	2	18	5	0	1	55	.273	1	4	0	1	3
41 Nate Bumstead....	2.79	1-0	2	2	1	0/0	0	9.2	11	7	3	4	7	3	0	1	41	.268	1	0	0	0	1
33 Jason Determann..	3.00	1-1	2	0	0	0/0	0	9.0	7	4	3	2	6	2	1	1	34	.206	0	1	0	1	0
Totals.....	1.99	5-2	7	7	4	2/0	1	63.1	60	19	14	12	38	14	1	3	239	.251	4	8	0	3	5
Opponents.....	6.05	2-5	7	7	0	1/1	0	61.0	74	45	41	29	37	12	1	6	244	.303	4	7	3	2	3

PB - Team (1), Liuzza 1, Opp (1). Pickoffs - Team (0), Opp (2). SBA/ATT - Liuzza (5-5), Mestepey (2-3), Determann (2-2), Meier (1-1).



2004 LSU Baseball  
 Games Summary for LSU (as of Jun 14, 2004)  
 (All games)

Inning-by-inning summary:

	1	2	3	4	5	6	7	8	9	EX	Total
	--	--	--	--	--	--	--	--	--	--	-----
LSU	52	38	51	73	67	50	78	45	43	9	506
Opponents	30	31	46	27	28	19	36	26	20	6	269

Win-loss summary:

	W	L	T	Pct
	--	--	--	-----
Total	46	17	0	.730
Conference	18	12	0	.600
Non-Conf	28	5	0	.848
Home	25	9	0	.735
Away	19	6	0	.760
Neutral	2	2	0	.500
Day	25	10	0	.714
Night	21	7	0	.750
vs Left	21	6	0	.778
vs Right	25	11	0	.694
1-Run games	7	7	0	.500
2-Run games	1	2	0	.333
5+Run games	31	6	0	.838
Extra inns	6	4	0	.600
Shutouts	4	3	0	.571

General summary:

Current winning streak : 5  
 Longest winning streak : 9  
 Longest losing streak : 4

Home attendance : 266391 ( 34 dates avg = 7835 )  
 Away attendance : 144558 ( 29 dates avg = 4984 )  
 Total attendance: 410949 ( 63 dates avg = 6523 )

2004 LSU Baseball  
 Team Game-by-Game for LSU (as of Jun 14, 2004)  
 Batting (All games)

Date	Opponent	AB	R	H	RBI	2B	3B	HR	BB	IBB	SB	CS	HBP	SAC	SF	GDP	K	PO	A	E	Avg
Feb 13, 2004	at UCF	37	4	7	3	1	0	2	6	0	0	2	0	0	0	0	8	30	11	0	.189
Feb 14, 2004	at UCF	45	17	19	16	1	0	5	9	0	1	0	2	1	0	0	8	27	16	1	.317
Feb 15, 2004	at UCF	38	5	8	5	1	1	0	5	0	0	0	2	0	0	0	9	28	12	1	.283
Feb 17, 2004	Louisiana-Monroe	35	7	11	6	4	1	0	6	0	0	0	1	0	1	0	4	27	11	1	.290
Feb 20, 2004	Jacksonville State	37	6	10	5	0	0	1	4	0	2	0	0	0	0	0	13	27	8	0	.286
Feb 21, 2004	Jacksonville State	36	14	14	12	2	1	0	5	0	0	0	1	0	0	2	2	27	15	1	.303
Feb 22, 2004	Jacksonville State	39	19	20	17	4	0	0	4	0	1	0	1	0	0	0	6	21	6	3	.333
Feb 27, 2004	Texas State	40	10	15	9	4	0	3	0	0	0	0	1	0	0	0	6	27	7	2	.339
Feb 28, 2004	Texas State	29	2	6	2	2	0	1	1	0	0	0	0	0	0	2	2	27	16	1	.327
Feb 29, 2004	Texas State	36	13	16	12	3	0	1	5	0	1	0	1	1	1	3	3	27	10	0	.339
Mar 02, 2004	at Tulane	41	6	14	6	1	0	1	1	0	1	0	0	0	0	0	7	27	11	0	.339
Mar 05, 2004	Houston	36	9	14	8	2	0	0	7	0	0	0	0	0	2	1	2	27	15	0	.343
Mar 06, 2004	Houston	38	5	13	5	3	0	0	3	0	0	0	0	0	0	2	6	27	8	4	.343
Mar 07, 2004	Houston	37	8	15	6	3	1	1	4	0	1	0	0	0	0	2	2	27	8	0	.347
Mar 09, 2004	at Louisiana-Monroe	38	6	12	5	5	1	0	0	0	0	0	0	1	0	0	9	27	7	0	.345
Mar 12, 2004	at Southeastern La.	35	7	12	7	1	1	2	2	0	0	0	0	0	2	0	2	27	9	1	.345
Mar 13, 2004	Southeastern La.	36	5	11	5	3	0	1	4	0	2	1	0	0	0	0	8	27	13	1	.343
Mar 16, 2004	New Orleans	28	14	12	14	4	2	1	7	0	0	0	0	0	3	0	1	21	4	0	.346
Mar 19, 2004	at *South Carolina	42	6	12	6	2	0	1	2	0	0	0	2	2	1	0	11	33	8	2	.343
Mar 20, 2004	at *South Carolina	34	5	10	4	3	0	2	1	0	0	0	0	0	1	1	4	24	16	1	.341
Mar 21, 2004	at *South Carolina	43	12	18	12	4	0	4	5	0	0	0	0	0	1	1	8	27	8	1	.345
Mar 23, 2004	at Centenary	38	9	12	8	5	0	2	1	0	1	0	1	1	1	0	7	27	13	0	.344
Mar 26, 2004	*Miss. State	32	3	6	3	1	0	1	5	0	0	0	0	0	1	1	8	27	16	1	.338
Mar 27, 2004	*Miss. State	35	11	13	11	3	0	3	3	0	2	0	1	0	0	2	2	27	6	2	.339
Mar 28, 2004	*Miss. State	38	14	16	14	2	0	2	4	0	0	0	0	0	2	0	0	27	14	3	.342
Mar 30, 2004	at New Orleans	40	12	15	9	2	0	3	2	0	0	1	2	0	1	0	9	27	10	0	.344
Apr 02, 2004	at *Auburn	39	6	11	6	3	0	1	4	0	1	0	1	1	1	0	11	29	11	3	.341
Apr 03, 2004	*Auburn	36	5	9	5	2	0	2	1	0	0	0	0	0	1	1	4	27	12	0	.338
Apr 04, 2004	at *Auburn	29	3	4	2	1	0	0	8	0	3	1	0	1	0	2	4	27	14	0	.333
Apr 06, 2004	Tulane	30	0	4	0	1	0	0	2	0	0	0	2	1	0	0	4	27	12	1	.327
Apr 09, 2004	*Arkansas	38	8	13	8	2	0	2	2	0	0	0	1	0	1	2	6	27	11	4	.328
Apr 10, 2004	*Arkansas	43	10	17	8	3	0	1	10	1	0	1	0	1	0	1	6	30	15	3	.330
Apr 11, 2004	*Arkansas	38	5	13	5	3	0	1	3	0	0	0	0	0	0	3	5	27	8	2	.331
Apr 13, 2004	Nicholls State	34	9	13	9	1	0	2	3	0	1	0	3	1	1	1	2	27	10	3	.332
Apr 14, 2004	vs Southeastern La.	36	9	11	7	1	1	0	4	0	2	0	1	0	0	3	3	27	14	1	.331
Apr 16, 2004	*Georgia	33	6	10	6	0	1	1	4	1	0	1	0	2	2	1	5	30	7	0	.331
Apr 17, 2004	*Georgia	38	10	14	10	1	1	1	2	0	2	1	1	0	0	0	7	27	9	1	.332
Apr 18, 2004	*Georgia	37	4	13	3	2	0	1	1	0	0	0	0	0	0	2	6	27	10	3	.332
Apr 20, 2004	at Tennessee	42	21	18	19	3	1	3	11	0	4	0	0	0	4	1	12	27	17	1	.335
Apr 23, 2004	at *Tennessee	37	6	9	3	0	1	0	4	0	0	0	0	0	1	1	7	24	13	2	.333
Apr 24, 2004	at *Tennessee	36	11	12	9	3	0	2	2	0	2	0	2	1	1	1	8	27	12	5	.333
Apr 25, 2004	at *Tennessee	41	11	15	11	4	1	1	4	0	0	0	2	0	0	2	4	27	15	0	.334
Apr 27, 2004	vs Tulane	42	9	15	7	2	0	1	2	0	4	0	0	0	0	1	4	27	10	1	.334
May 01, 2004	*Alabama	31	2	5	2	3	0	0	2	0	0	0	0	0	0	1	4	27	14	2	.331
May 02, 2004	*Alabama	27	2	4	2	3	0	0	6	0	0	0	0	1	0	0	3	24	14	0	.328
May 02, 2004	*Alabama	29	9	11	7	2	0	1	4	0	3	0	0	0	2	0	3	21	12	0	.329
May 07, 2004	at *Kentucky	32	3	9	3	1	0	0	2	0	0	0	1	1	0	4	4	24	6	1	.328
May 08, 2004	at *Kentucky	37	11	15	11	1	0	1	8	0	0	0	1	2	1	1	3	27	13	1	.330
May 09, 2004	at *Kentucky	45	15	23	14	2	0	3	4	0	0	1	1	2	0	2	4	27	14	0	.334
May 15, 2004	*Vanderbilt	33	3	8	3	2	0	1	4	1	0	0	0	1	1	1	2	30	15	2	.332
May 15, 2004	*Vanderbilt	43	7	15	7	3	0	0	5	1	2	0	0	0	1	1	5	33	16	1	.333
May 16, 2004	*Vanderbilt	32	0	6	0	1	0	0	2	0	1	0	0	0	0	1	3	27	16	3	.330
May 19, 2004	Southeastern La.	38	16	17	14	2	0	5	5	0	0	0	1	0	0	0	2	24	10	1	.333
May 21, 2004	at *Ole Miss	34	6	12	6	2	0	2	3	0	1	0	0	1	0	2	4	24	11	0	.333
May 22, 2004	at *Ole Miss	40	11	15	11	6	0	2	3	0	2	0	1	2	0	1	5	27	13	3	.334
May 23, 2004	at *Ole Miss	47	14	22	13	4	0	2	3	0	1	1	0	0	0	2	8	27	6	0	.337
May 26, 2004	vs Florida	37	4	11	3	2	0	0	2	0	0	1	1	1	0	2	5	30	12	0	.336
May 27, 2004	vs Georgia	27	0	4	0	1	0	0	5	0	0	0	1	1	0	3	5	25	14	1	.334
Jun 04, 2004	Army	37	9	15	8	0	1	0	6	0	1	1	0	0	0	0	5	27	10	0	.335
Jun 05, 2004	Southern Mississippi	32	6	8	5	4	0	1	3	0	0	0	0	0	0	0	3	27	11	1	.334
Jun 06, 2004	at Coll. of Charleston	40	11	14	11	4	0	2	8	0	1	0	1	0	1	1	5	27	15	0	.334
Jun 12, 2004	Texas A&M	41	11	17	11	1	0	2	3	0	0	0	2	0	0	1	5	27	11	2	.336
Jun 13, 2004	at Texas A&M	30	4	5	4	0	0	1	2	0	0	0	2	1	1	1	9	27	16	2	.333
Totals		2304	506	768	463	142	15	79	243	4	43	12	40	27	36	63	332	1693	727	76	.333

2004 LSU Baseball  
 Team Game-by-Game for LSU (as of Jun 14, 2004)  
 Pitching (All games)

Date	Opponent	IP	H	R	ER	BB	SO	2B	3B	HR	WP	BK	HBP	DP	IBB	Score	W-L	SV	ERA
Feb 13, 2004	at UCF	10.0	7	3	3	3	7	1	0	1	0	1	0	0	0	4-3	1-0	0	2.70
Feb 14, 2004	at UCF	9.0	7	4	3	5	5	0	1	0	1	0	1	1	0	17-4	2-0	0	2.84
Feb 15, 2004	at UCF	9.1	10	6	6	8	8	5	0	1	1	1	2	0	2	5-6	2-1	0	3.81
Feb 17, 2004	Louisiana-Monroe	9.0	6	1	1	6	7	1	0	0	0	1	1	0	0	7-1	3-1	0	3.13
Feb 20, 2004	Jacksonville State	9.0	6	1	1	1	11	0	0	0	0	0	0	0	0	6-1	4-1	1	2.72
Feb 21, 2004	Jacksonville State	9.0	8	2	2	2	6	3	0	1	0	0	0	2	0	14-2	5-1	1	2.60
Feb 22, 2004	Jacksonville State	7.0	4	1	0	0	7	2	0	0	0	1	0	0	0	19-1	6-1	1	2.31
Feb 27, 2004	Texas State	9.0	6	1	1	3	4	1	0	0	0	0	1	1	0	10-1	7-1	1	2.14
Feb 28, 2004	Texas State	9.0	8	1	1	2	5	0	0	0	0	0	0	1	0	2-1	8-1	1	2.02
Feb 29, 2004	Texas State	9.0	7	2	2	2	6	0	0	1	1	0	1	0	0	13-2	9-1	1	2.01
Mar 02, 2004	at Tulane	9.0	4	0	0	1	7	1	0	0	1	0	0	1	0	6-0	10-1	1	1.83
Mar 05, 2004	Houston	9.0	12	3	3	3	4	2	0	0	2	0	1	1	0	9-3	11-1	1	1.93
Mar 06, 2004	Houston	9.0	14	10	5	4	11	1	0	3	1	0	1	0	0	5-10	11-2	1	2.17
Mar 07, 2004	Houston	9.0	10	2	2	2	7	1	0	0	0	0	0	1	0	8-2	12-2	1	2.15
Mar 09, 2004	at Louisiana-Monroe	9.0	4	1	1	1	10	0	0	0	0	0	1	1	0	6-1	13-2	1	2.08
Mar 12, 2004	Southeastern La.	9.0	6	1	1	3	3	2	0	0	0	0	1	2	0	7-1	14-2	1	2.01
Mar 13, 2004	Southeastern La.	9.0	12	1	1	4	5	1	0	0	0	0	1	4	0	5-1	15-2	2	1.95
Mar 16, 2004	New Orleans	7.0	3	0	0	1	10	1	0	0	1	0	0	1	0	14-0	16-2	2	1.86
Mar 19, 2004	at *South Carolina	11.0	8	3	3	4	12	2	0	1	1	0	2	0	0	6-3	17-2	2	1.90
Mar 20, 2004	at *South Carolina	8.0	11	12	11	7	7	1	0	2	1	0	0	1	0	5-12	17-3	2	2.37
Mar 21, 2004	at *South Carolina	9.0	9	7	7	6	7	3	1	1	0	0	0	1	0	12-7	18-3	3	2.59
Mar 23, 2004	at Centenary	9.0	11	3	3	0	7	1	0	1	0	2	1	0	0	9-3	19-3	3	2.61
Mar 26, 2004	*Miss. State	9.0	14	7	3	4	6	4	0	0	0	0	0	3	0	3-7	19-4	3	2.63
Mar 27, 2004	*Miss. State	9.0	9	6	6	2	9	3	1	0	1	0	2	0	0	11-6	20-4	3	2.77
Mar 28, 2004	*Miss. State	9.0	11	3	2	0	2	1	0	1	1	0	0	2	0	14-3	21-4	3	2.74
Mar 30, 2004	at New Orleans	9.0	10	5	5	3	10	4	1	1	1	0	0	1	0	12-5	22-4	3	2.83
Apr 02, 2004	at *Auburn	9.2	17	7	5	3	13	2	1	1	1	0	0	0	0	6-7	22-5	3	2.90
Apr 03, 2004	at *Auburn	9.0	5	3	3	0	7	3	0	1	0	0	1	0	0	5-3	23-5	3	2.90
Apr 04, 2004	at *Auburn	9.0	5	2	2	2	3	1	0	1	0	0	0	2	0	3-2	24-5	4	2.87
Apr 06, 2004	Tulane	9.0	7	1	1	2	4	1	0	0	2	0	0	1	0	0-1	24-6	4	2.81
Apr 09, 2004	*Arkansas	9.0	14	11	6	3	4	4	0	2	1	0	0	0	0	8-11	24-7	4	2.91
Apr 10, 2004	*Arkansas	10.0	14	11	8	5	5	1	0	3	1	0	1	0	1	10-11	24-8	4	3.06
Apr 11, 2004	*Arkansas	9.0	13	7	6	1	4	0	0	3	0	0	0	0	0	5-7	24-9	4	3.15
Apr 13, 2004	Nicholls State	9.0	9	3	2	2	3	1	0	0	1	0	1	1	0	9-3	25-9	5	3.12
Apr 14, 2004	vs Southeastern La.	9.0	7	3	3	5	9	3	0	1	2	0	0	1	0	9-3	26-9	5	3.11
Apr 16, 2004	*Georgia	10.0	9	5	5	1	6	1	0	1	0	0	0	0	0	6-5	27-9	5	3.16
Apr 17, 2004	*Georgia	9.0	9	2	2	2	8	1	0	1	0	0	0	1	0	10-2	28-9	5	3.13
Apr 18, 2004	*Georgia	9.0	17	12	7	1	4	3	0	1	1	0	2	1	0	4-12	28-10	5	3.23
Apr 20, 2004	at Southern	9.0	15	10	9	2	10	0	1	3	1	0	1	2	0	21-10	29-10	5	3.38
Apr 23, 2004	at *Tennessee	8.0	16	8	8	4	6	7	0	0	1	0	1	2	0	6-8	29-11	5	3.50
Apr 24, 2004	at *Tennessee	9.0	10	5	2	1	4	0	0	0	0	1	1	1	0	11-5	30-11	5	3.46
Apr 25, 2004	at *Tennessee	9.0	5	1	1	0	3	1	0	0	0	0	1	0	0	11-1	31-11	5	3.40
Apr 27, 2004	vs Tulane	9.0	11	5	5	1	4	2	0	2	0	0	1	1	0	9-5	32-11	6	3.44
May 01, 2004	*Alabama	9.0	12	8	4	1	5	5	0	0	0	0	1	1	0	2-8	32-12	6	3.45
May 02, 2004	*Alabama	8.0	8	1	1	2	3	0	0	0	0	0	0	2	0	2-1	33-12	6	3.41
May 02, 2004	*Alabama	7.0	10	2	2	0	3	1	0	0	0	0	0	3	0	9-2	34-12	6	3.39
May 07, 2004	at *Kentucky	8.0	11	10	9	2	5	1	0	2	0	1	1	0	0	3-10	34-13	6	3.52
May 08, 2004	at *Kentucky	9.0	9	8	8	3	5	3	0	1	0	0	4	2	0	11-8	35-13	6	3.62
May 09, 2004	at *Kentucky	9.0	8	4	4	2	8	1	0	0	2	0	0	0	0	15-4	36-13	6	3.62
May 15, 2004	*Vanderbilt	10.0	10	2	2	3	4	1	0	0	0	0	0	0	1	3-2	37-13	6	3.58
May 15, 2004	*Vanderbilt	11.0	14	6	5	3	6	3	2	0	0	0	2	0	0	7-6	38-13	6	3.60
May 16, 2004	*Vanderbilt	9.0	12	8	8	1	6	0	0	3	2	0	1	2	0	0-8	38-14	6	3.68
May 19, 2004	Southeastern La.	8.0	9	2	2	4	7	1	0	2	0	0	2	0	0	16-2	39-14	6	3.66
May 21, 2004	at *Ole Miss	8.0	10	7	6	1	5	1	1	1	0	0	0	0	0	6-7	39-15	6	3.71
May 22, 2004	at *Ole Miss	9.0	7	4	1	4	6	1	0	0	0	0	0	1	0	11-4	40-15	6	3.66
May 23, 2004	at *Ole Miss	9.0	13	6	6	3	7	3	0	1	0	0	2	0	0	14-6	41-15	6	3.70
May 26, 2004	vs Florida	10.0	9	5	5	3	12	3	1	1	2	0	0	1	1	4-5	41-16	6	3.72
May 27, 2004	vs Georgia	8.1	7	1	1	1	2	1	0	0	0	0	0	1	1	0-1	41-17	6	3.67
Jun 04, 2004	Army	9.0	7	0	0	0	9	2	0	0	0	0	4	1	0	9-0	42-17	6	3.61
Jun 05, 2004	Southern Mississippi	9.0	8	2	2	2	6	3	0	1	1	0	0	0	0	6-2	43-17	6	3.58
Jun 06, 2004	at Coll. of Charleston	9.0	13	3	3	1	2	2	0	0	1	0	2	3	0	11-3	44-17	6	3.57
Jun 12, 2004	Texas A&M	9.0	11	8	3	4	6	2	0	1	0	0	1	1	0	11-8	45-17	7	3.57
Jun 13, 2004	at Texas A&M	9.0	5	0	0	1	1	1	0	0	0	0	1	0	0	4-0	46-17	7	3.51
Totals		564.1	593	269	220	153	388	107	10	47	32	8	47	55	6	506-269	46-17	7	3.51

\* = SEC game

2004 LSU Baseball  
 Miscellaneous Stats for LSU (as of Jun 14, 2004)  
 (All games)

MULTIPLE HIT GAMES	2	3	4	5+	Tot
1 J.C. Holt.....	19	11	3	-	33
12 Ryan Patterson...	18	12	2	-	32
16 Jon Zeringue.....	18	10	2	1	31
43 Nick Stavinoha...	21	4	-	-	25
3 Blake Gill.....	16	5	1	-	22
14 Matt Liuzza.....	16	4	1	-	21
21 Clay Harris.....	17	3	-	-	20
25 Will Harris.....	8	3	2	-	13
7 Ivan Naccarata...	9	1	1	-	11
2 Derek Hebert.....	5	-	1	-	6
9 Dustin Weaver....	5	-	-	-	5
34 Matt Horwath.....	2	1	-	-	3
TEAM	154	54	13	1	222

MULTIPLE RBI GAMES	2	3	4	5+	Tot
12 Ryan Patterson...	10	5	1	3	19
1 J.C. Holt.....	10	5	1	-	16
16 Jon Zeringue.....	8	2	2	1	13
14 Matt Liuzza.....	10	-	1	1	12
25 Will Harris.....	7	4	1	-	12
3 Blake Gill.....	9	1	1	-	11
43 Nick Stavinoha...	7	1	-	1	9
21 Clay Harris.....	5	-	3	1	9
7 Ivan Naccarata...	6	1	-	1	8
9 Dustin Weaver....	3	-	-	-	3
30 Bobby DiLiberto..	-	2	-	-	2
34 Matt Horwath.....	2	-	-	-	2
38 Brad Bass.....	1	-	-	-	1
10 Ty Jensen.....	1	-	-	-	1
TEAM	79	21	10	8	118

HITTING STREAKS	Longest	Current
12 Ryan Patterson...	15	-
14 Matt Liuzza.....	14	3
3 Blake Gill.....	13	13
1 J.C. Holt.....	13	-
21 Clay Harris.....	11	-
34 Matt Horwath.....	8	-
16 Jon Zeringue.....	8	2
43 Nick Stavinoha...	8	-
7 Ivan Naccarata...	7	3
25 Will Harris.....	7	5
2 Derek Hebert.....	5	-
9 Dustin Weaver....	4	-
30 Bobby DiLiberto..	3	3
10 Ty Jensen.....	2	-
38 Brad Bass.....	1	1

2004 LSU Baseball  
Miscellaneous Stats for LSU (as of Jun 14, 2004)  
(All games)

STARTING LINEUP BY POSITION (Team W-L record when starter)

-----  
PITCHER:  
35 Justin Meier..... 15 (11-4)  
41 Nate Bumstead.... 14 (11-3)  
13 Clay Dirks..... 13 (9-4)  
46 Lane Mestepey.... 13 (9-4)  
33 Jason Determann.. 5 (3-2)  
28 Michael Bonura... 3 (3-0)  
CATCHER:  
14 Matt Liuzza..... 56 (40-16)  
9 Dustin Weaver.... 7 (6-1)  
FIRST BASE:  
25 Will Harris..... 46 (33-13)  
21 Clay Harris..... 17 (13-4)  
SECOND BASE:  
7 Ivan Naccarata... 30 (21-9)  
3 Blake Gill..... 29 (23-6)  
34 Matt Horwath..... 3 (1-2)  
30 Bobby DiLiberto.. 1 (1-0)  
THIRD BASE:  
21 Clay Harris..... 46 (33-13)  
7 Ivan Naccarata... 17 (13-4)  
SHORTSTOP:  
3 Blake Gill..... 28 (19-9)  
2 Derek Hebert..... 21 (15-6)  
34 Matt Horwath..... 14 (12-2)  
LEFT FIELD:  
12 Ryan Patterson... 63 (46-17)  
CENTER FIELD:  
1 J.C. Holt..... 63 (46-17)  
RIGHT FIELD:  
16 Jon Zeringue..... 63 (46-17)  
DESIGNATED HITTER:  
43 Nick Stavinoha... 56 (40-16)  
9 Dustin Weaver.... 3 (2-1)  
14 Matt Liuzza..... 2 (2-0)  
7 Ivan Naccarata... 1 (1-0)  
3 Blake Gill..... 1 (1-0)

2004 LSU Baseball  
 Miscellaneous Stats for LSU (as of Jun 14, 2004)  
 (All games)

STARTING LINEUP BY LINEUP SPOT (Team W-L record when starter)

---

LEADOFF:		
1 J.C. Holt.....	52	(37-15)
34 Matt Horwath.....	6	(5-1)
12 Ryan Patterson...	5	(4-1)
2ND SPOT:		
12 Ryan Patterson...	55	(40-15)
1 J.C. Holt.....	7	(6-1)
7 Ivan Naccarata...	1	(0-1)
3RD SPOT:		
3 Blake Gill.....	35	(24-11)
14 Matt Liuzza.....	19	(15-4)
1 J.C. Holt.....	4	(3-1)
16 Jon Zeringue.....	2	(1-1)
12 Ryan Patterson...	1	(1-0)
9 Dustin Weaver....	1	(1-0)
7 Ivan Naccarata...	1	(1-0)
CLEANUP:		
16 Jon Zeringue.....	23	(17-6)
43 Nick Stavinoha...	17	(13-4)
14 Matt Liuzza.....	17	(11-6)
21 Clay Harris.....	6	(5-1)
5TH SPOT:		
21 Clay Harris.....	37	(28-9)
43 Nick Stavinoha...	13	(9-4)
7 Ivan Naccarata...	7	(3-4)
16 Jon Zeringue.....	5	(5-0)
14 Matt Liuzza.....	1	(1-0)
6TH SPOT:		
16 Jon Zeringue.....	16	(10-6)
43 Nick Stavinoha...	16	(11-5)
7 Ivan Naccarata...	14	(11-3)
21 Clay Harris.....	9	(6-3)
14 Matt Liuzza.....	6	(6-0)
9 Dustin Weaver....	1	(1-0)
25 Will Harris.....	1	(1-0)
7TH SPOT:		
7 Ivan Naccarata...	19	(15-4)
14 Matt Liuzza.....	10	(7-3)
16 Jon Zeringue.....	10	(7-3)
3 Blake Gill.....	6	(6-0)
21 Clay Harris.....	6	(4-2)
43 Nick Stavinoha...	4	(3-1)
9 Dustin Weaver....	3	(1-2)
25 Will Harris.....	3	(1-2)
12 Ryan Patterson...	1	(1-0)
30 Bobby DiLiberto..	1	(1-0)
8TH SPOT:		
25 Will Harris.....	22	(18-4)
16 Jon Zeringue.....	7	(6-1)
3 Blake Gill.....	7	(4-3)
43 Nick Stavinoha...	6	(4-2)
14 Matt Liuzza.....	5	(2-3)
21 Clay Harris.....	5	(3-2)
9 Dustin Weaver....	4	(4-0)
7 Ivan Naccarata...	4	(3-1)
2 Derek Hebert.....	2	(2-0)
12 Ryan Patterson...	1	(0-1)
9TH SPOT:		
25 Will Harris.....	20	(13-7)
2 Derek Hebert.....	19	(13-6)
34 Matt Horwath.....	11	(8-3)
3 Blake Gill.....	10	(9-1)
7 Ivan Naccarata...	2	(2-0)
9 Dustin Weaver....	1	(1-0)

2004 LSU Baseball  
 Miscellaneous Stats for LSU (as of Jun 14, 2004)  
 (All games)

STARTERS SUMMARY

Player	GS	Position											Batting Order								
		p	c	1b	2b	3b	ss	lf	cf	rf	of	dh	1st	2nd	3rd	4th	5th	6th	7th	8th	9th
12 Ryan Patterson...	63	.	.	.	.	.	.	63	.	.	.	.	5	55	1	.	.	.	1	1	.
21 Clay Harris.....	63	.	.	17	.	46	.	.	.	.	.	.	.	.	.	6	37	9	6	5	.
1 J.C. Holt.....	63	.	.	.	.	.	.	.	63	.	.	.	52	7	4	.	.	.	.	.	.
16 Jon Zeringue.....	63	.	.	.	.	.	.	.	.	63	.	.	.	.	2	23	5	16	10	7	.
14 Matt Liuzza.....	58	.	56	.	.	.	.	.	.	.	.	2	.	.	19	17	1	6	10	5	.
3 Blake Gill.....	58	.	.	.	29	.	28	.	.	.	.	1	.	.	35	.	.	.	6	7	10
43 Nick Stavinoha...	56	.	.	.	.	.	.	.	.	.	.	56	.	.	.	17	13	16	4	6	.
7 Ivan Naccarata...	48	.	.	.	30	17	.	.	.	.	.	1	.	1	1	.	7	14	19	4	2
25 Will Harris.....	46	.	.	46	.	.	.	.	.	.	.	.	.	.	.	.	.	1	3	22	20
2 Derek Hebert.....	21	.	.	.	.	.	21	.	.	.	.	.	.	.	.	.	.	.	.	2	19
34 Matt Horwath.....	17	.	.	.	3	.	14	.	.	.	.	.	6	.	.	.	.	.	.	.	11
35 Justin Meier.....	15	15	.	.	.	.	.	.	.	.	.	.	.	.	.	.	.	.	.	.	.
41 Nate Bumstead....	14	14	.	.	.	.	.	.	.	.	.	.	.	.	.	.	.	.	.	.	.
13 Clay Dirks.....	13	13	.	.	.	.	.	.	.	.	.	.	.	.	.	.	.	.	.	.	.
46 Lane Mestepey....	13	13	.	.	.	.	.	.	.	.	.	.	.	.	.	.	.	.	.	.	.
9 Dustin Weaver....	10	.	7	.	.	.	.	.	.	.	.	3	.	.	1	.	.	1	3	4	1
33 Jason Determann..	5	5	.	.	.	.	.	.	.	.	.	.	.	.	.	.	.	.	.	.	.
28 Michael Bonura...	3	3	.	.	.	.	.	.	.	.	.	.	.	.	.	.	.	.	.	.	.
30 Bobby DiLiberto..	1	.	.	.	1	.	.	.	.	.	.	.	.	.	.	.	.	.	1	.	.

2004 LSU Baseball  
Season Game Highs for LSU (as of Jun 14, 2004)  
(All games)  
TEAM GAME HIGHS

Batting

At bats: 47 - vs Ole Miss (May 23, 2004)  
Runs scored: 21 - vs Southern (Apr 20, 2004)  
Hits: 23 - vs Kentucky (May 09, 2004)  
RBIs: 19 - vs Southern (Apr 20, 2004)  
Doubles: 6 - vs Ole Miss (May 22, 2004)  
Triples: 2 - vs New Orleans (Mar 16, 2004)  
Home runs: 5 - vs UCF (Feb 14, 2004)  
5 - vs Southeastern La. (May 19, 2004)  
Total bases: 35 - vs UCF (Feb 14, 2004)  
Walks: 11 - vs Southern (Apr 20, 2004)  
Strikeouts: 13 - vs Jacksonville State (Feb 20, 2004)  
Sac hits: 2 - (5 games )  
Sac flies: 4 - vs Southern (Apr 20, 2004)  
Stolen bases: 4 - vs Southern (Apr 20, 2004)  
4 - vs Tulane (Apr 27, 2004)  
Hit by pitch: 3 - vs Nicholls State (Apr 13, 2004)  
Caught stealing: 2 - vs UCF (Feb 13, 2004)  
Runners LOB: 14 - vs Arkansas (Apr 10, 2004)  
Hit into DP: 4 - vs Georgia (Apr 18, 2004)  
4 - vs Kentucky (May 07, 2004)

Fielding

Putouts: 33 - vs South Carolina (Mar 19, 2004)  
33 - vs Vanderbilt (May 15, 2004)  
Assists: 17 - vs Southern (Apr 20, 2004)  
Errors: 5 - vs Tennessee (Apr 24, 2004)  
Passed balls: 1 - (8 games )  
DPs turned: 5 - vs Miss. State (Mar 26, 2004)

Pitching

Innings pitched: 11.0 - vs South Carolina (Mar 19, 2004)  
11.0 - vs Vanderbilt (May 15, 2004)  
Strikeouts: 13 - vs Auburn (Apr 02, 2004)  
Hits allowed: 3 - vs New Orleans (Mar 16, 2004)  
Wild pitches: 2 - (6 games )  
Hit batters: 4 - vs Kentucky (May 08, 2004)  
4 - vs Army (Jun 04, 2004)



2004 LSU Baseball  
Season Game Highs for LSU (as of Jun 14, 2004)  
(All games)  
INDIVIDUAL GAME HIGHS

Batting

At bats: 6 - (17 games )  
Runs scored: 4 - Derek Hebert vs Southern (Apr 20, 2004)  
4 - J.C. Holt vs Southern (Apr 20, 2004)  
4 - Ryan Patterson vs Southern (Apr 20, 2004)  
Hits: 5 - Jon Zeringue vs Vanderbilt (May 15, 2004)  
RBIs: 7 - Ivan Naccarata vs Miss. State (Mar 28, 2004)  
Doubles: 3 - Nick Stavinoha vs Southern Mississippi (Jun 05, 2004)  
Triples: 1 - (15 games )  
Home runs: 2 - (4 games )  
Total bases: 10 - Ryan Patterson vs Ole Miss (May 23, 2004)  
Walks: 3 - Clay Harris vs UCF (Feb 14, 2004)  
3 - Blake Gill vs Houston (Mar 07, 2004)  
3 - J.C. Holt vs Southern (Apr 20, 2004)  
Strikeouts: 4 - Jon Zeringue vs UCF (Feb 15, 2004)  
4 - Derek Hebert vs Louisiana-Monroe (Mar 09, 2004)  
Sac hits: 2 - J.C. Holt vs South Carolina (Mar 19, 2004)  
2 - Ryan Patterson vs Georgia (Apr 16, 2004)  
Sac flies: 2 - Clay Harris vs Southern (Apr 20, 2004)  
Stolen bases: 2 - J.C. Holt vs Southern (Apr 20, 2004)  
2 - Ivan Naccarata vs Tulane (Apr 27, 2004)  
Hit by pitch: 2 - Matt Liuzza vs Nicholls State (Apr 13, 2004)  
Caught stealing: 1 - (12 games )  
Runners LOB: 7 - Derek Hebert vs Houston (Mar 05, 2004)

Fielding

Putouts: 16 - Will Harris vs Alabama (May 01, 2004)  
16 - Will Harris vs Coll. of Charleston (Jun 06, 2004)  
Assists: 8 - Matt Horwath vs Auburn (Apr 03, 2004)  
8 - Blake Gill vs Vanderbilt (May 16, 2004)  
Errors: 3 - Blake Gill vs Georgia (Apr 18, 2004)  
3 - Blake Gill vs Tennessee (Apr 24, 2004)  
3 - Will Harris vs Ole Miss (May 22, 2004)  
Passed balls: 1 - (8 games )

Pitching

Innings pitched: 9.0 - (5 games )  
Strikeouts: 9 - Justin Meier vs Auburn (Apr 02, 2004)  
9 - Justin Meier vs Florida (May 26, 2004)  
9 - Justin Meier vs Army (Jun 04, 2004)  
Wild pitches: 2 - Justin Meier vs Houston (Mar 05, 2004)  
2 - Michael Bonura vs Southeastern La. (Apr 14, 2004)  
Hit batters: 4 - Justin Meier vs Kentucky (May 08, 2004)  
4 - Justin Meier vs Army (Jun 04, 2004)