

**2004 Schedule/Results (24-6, 6-3 SEC)**

Date	Opponent	Time/Result
<b>February</b>		
13 (Fri.)	at Central Florida	W, 4-3 (10)
14 (Sat.)	at Central Florida	W, 17-4
15 (Sun.)	at Central Florida	L, 5-6 (10)
17 (Tue.)	UL-MONROE	W, 7-1
20 (Fri.)	JACKSONVILLE STATE	W, 6-1
21 (Sat.)	JACKSONVILLE STATE	W, 14-2
22 (Sun.)	JACKSONVILLE STATE	W, 19-1 (7)
27 (Fri.)	TEXAS STATE	W, 10-1
28 (Sat.)	TEXAS STATE	W, 2-1
29 (Sun.)	TEXAS STATE	W, 13-2
<b>March</b>		
2 (Tue.)	#8 Tulane	W, 6-0 #
5 (Fri.)	HOUSTON	W, 9-3
6 (Sat.)	HOUSTON	L, 5-10
7 (Sun.)	HOUSTON	W, 8-2
9 (Tue.)	at UL-Monroe	W, 6-1
12 (Fri.)	SOUTHEASTERN LA.	W, 7-1
13 (Sat.)	SOUTHEASTERN LA.	W, 5-1
16 (Tue.)	NEW ORLEANS	W, 14-0 (7)
19 (Fri.)	at #3 South Carolina	W, 6-3 (11)
20 (Sat.)	at #3 South Carolina	L, 12-5
21 (Sun.)	at #3 South Carolina	W, 12-7
23 (Tue.)	at Centenary	W, 9-3
26 (Fri.)	#24 MISSISSIPPI STATE	L, 7-3
27 (Sat.)	#24 MISSISSIPPI STATE	W, 11-6
28 (Sun.)	#24 MISSISSIPPI STATE	W, 14-3
30 (Tue.)	at New Orleans	W, 12-5
<b>April</b>		
2 (Fri.)	at #11 Auburn	L, 7-6 (10)
3 (Sat.)	at #11 Auburn	W, 5-3
4 (Sun.)	at #11 Auburn	W, 3-2
6 (Tue.)	#12 TULANE	L, 1-0
9 (Fri.)	ARKANSAS	6:30 p.m.
10 (Sat.)	ARKANSAS	2 p.m.
11 (Sun.)	ARKANSAS	1 p.m.
13 (Tue.)	NICHOLLS STATE	6:30 p.m.
14 (Wed.)	Southeastern La.	7 p.m. #
16 (Fri.)	GEORGIA	6:30 p.m.
17 (Sat.)	GEORGIA	2 p.m.
18 (Sun.)	GEORGIA	1 p.m.
20 (Tue.)	at Southern	6:30 p.m.
23 (Fri.)	at Tennessee	6 p.m.
24 (Sat.)	at Tennessee	6 p.m.
25 (Sun.)	at Tennessee	1 p.m.
27 (Tue.)	Tulane	7 p.m. \$
30 (Fri.)	ALABAMA	6:30 p.m.
<b>May</b>		
1 (Sat.)	ALABAMA	2 p.m.
2 (Sun.)	ALABAMA	1 p.m.
7 (Fri.)	at Kentucky	5:30 p.m.
8 (Sat.)	at Kentucky	1 p.m.
9 (Sun.)	at Kentucky	Noon
14 (Fri.)	VANDERBILT	6:30 p.m.
15 (Sat.)	VANDERBILT	2 p.m.
16 (Sun.)	VANDERBILT	1 p.m.
19 (Wed.)	SOUTHEASTERN LA.	6:30 p.m.
21 (Fri.)	at Ole Miss	6:30 p.m.
22 (Sat.)	at Ole Miss	3 p.m.
23 (Sun.)	at Ole Miss	1:30 p.m.
26-30	SEC Tournament (Hoover, Ala.)	
<b>June</b>		
4-6	NCAA Regional (sites TBA)	
11-13/12-14	NCAA Super Regional (sites TBA)	
18-27/28	College World Series (Omaha, Neb.)	

# - Zephyr Field (Metairie, La.) \$ - Louisiana Superdome



# LSU TIGERS

(24-6, 6-3)

vs. **Arkansas (20-11, 5-4)**

**Fri., April 9 @ 6:30p.m.; Sat., April 10 @ 2 p.m.; Sun., April 11 @ 1 p.m. • Alex Box Stadium**

**Radio:** LSU Sports Network

**TV:** Fox Sports South/Southwest (Saturday); Cox Sports Television (Sunday)

## Tigers Play Host to Arkansas in Alex Box Stadium

Second-ranked LSU continues a five-game homestand at 6:30 p.m. Friday as the Tigers play host to Arkansas in a three-game Southeastern Conference series.

The games can be heard on the LSU Sports Radio Network, including flagship WDGL-FM 98.1 in Baton Rouge. The radio broadcast and live stats may be also be accessed at [www.LSUsports.net](http://www.LSUsports.net).

Saturday's game will be televised by Fox Sports South/Southwest and Sunday's game will be televised by Cox Sports Television. There is no TV broadcast of Friday's game.

LSU won two of three games at #11 Auburn last weekend to capture its third consecutive SEC series this year and its fifth in a row over the past two seasons. Two of the three series victories this year have come on the road against Top 15 teams (Auburn and South Carolina).

The Tigers have a 6-3 SEC record and trail first-place Ole Miss (7-2) by one game in the Western Division standings. Arkansas (5-4) is in third place in the West, one game behind LSU and two games behind Ole Miss.

Beginning with Tuesday's game versus Tulane (a 1-0 loss), LSU is playing eight of nine games at home after playing eight of the previous 11 contests on the road.

## The LSU-Arkansas Series

LSU leads the all-time series with Arkansas, 36-15, and the Tigers defeated the Razorbacks in three of four meetings in 2003. Since Arkansas swept three games from LSU in 2001 at Fayetteville, the Tigers have won six of the last seven games with the Hogs.

LSU has won 11 straight games versus Arkansas in Alex Box Stadium; the Razorbacks' last win in Baton Rouge came on April 19, 1996, a 3-2 victory. The Tigers have a 21-4 advantage over Arkansas in games played in Baton Rouge.

LSU coach Smoke Laval has a 6-2 career mark vs. Arkansas while UA coach Dave Van Horn, the former head coach at Northwestern (La.) St. and Nebraska, has a 3-6 record against LSU.

## Pitching Matchups

### Game 1

LSU - So. RHP Justin Meier (4-1, 2.92 ERA, 52.1 IP, 16 BB, 42 SO)  
 UA - Jr. LHP Clint Brannon (0-1, 2.70 ERA, 36.2 IP, 11 BB, 27 SO)

### Game 2

LSU - Fr. LHP Clay Dirks (6-0, 1.90 ERA, 47.1 IP, 8 BB, 44 SO)  
 UA - So. RHP Charley Boyce (4-1, 3.07 ERA, 41.0 IP, 5 BB, 30 SO)

### Game 3

LSU - Sr. RHP Nate Bumstead (5-0, 3.72 ERA, 38.2 IP, 11 BB, 22 SO)  
 UA - To Be Determined

LSU		Arkansas	
<b>Record</b>	24-6 (6-3 SEC)	<b>Record</b>	20-11 (5-4 SEC)
<b>Ranking</b>	No. 2 Collegiate Baseball No. 3 Baseball America	<b>Ranking</b>	Not Ranked
<b>Coach</b>	No. 3 ESPN/Sports Weekly Smoke Laval	<b>Coach</b>	Dave Van Horn
<b>Career Record</b>	354-209-1 (10th year)	<b>Career Record</b>	640-282 (16th year)
<b>LSU Record</b>	113-50-1 (third year)	<b>UA Record</b>	55-33 (2nd year)
<b>Laval vs. Arkansas</b>	6-2	<b>Van Horn vs. LSU</b>	3-6

## Tracking the Tigers

Week	BA	CB	ESPN/SW
Preseason	2	3	3
Feb. 2	2	3	3
Feb. 9	2	3	3
Feb. 16	2	4	5
Feb. 23	3	1	5
March 1	3	1	4
March 8	5	1	5
March 15	4	1	5
March 22	3	1	3
March 29	3	2	3
April 5	3	2	3

## Baseball America (April 5)

- Stanford (23-4)
- Texas (31-4)
- LSU (24-5)**
- Rice (24-6)
- Miami, Fla. (24-6)
- South Carolina (23-5)
- Long Beach State (20-8)
- Ole Miss (24-4)
- Notre Dame (22-3)
- Wichita State (16-3)
- Southern Miss (24-4)
- Tulane (22-8)
- Nebraska (21-5)
- North Carolina (23-6)
- Texas A&M (26-8)
- UC-Irvine (19-6-1)
- East Carolina (24-6)
- Auburn (21-9)
- Central Florida (27-5)
- Tennessee (25-5)
- Florida State (23-9)
- Oklahoma (19-10)
- Arizona State (22-9)
- Florida (25-8)
- Vanderbilt (21-7)

## Collegiate Baseball (April 5)

- Stanford (23-4)
- LSU (24-5)**
- Texas (31-4)
- Notre Dame (22-3)
- Ole Miss (24-4)
- Rice (24-6)
- Miami, Fla. (24-6)
- North Carolina (23-6)
- South Carolina (23-5)
- UC-Irvine (19-6-1)
- Long Beach State (20-8)
- Wichita State (16-3)
- Florida State (23-9)
- Tennessee (25-5)
- Nebraska (21-5)
- Auburn (21-9)
- Florida (25-8)
- Southern Miss (24-4)
- Central Florida (27-5)
- College of Charleston (23-5)
- Arizona State (22-9)
- Tulane (22-8)
- Clemson (17-10)
- North Carolina State (20-10)
- Georgia (19-10)

## The LSU Lineup

Player	Pos.	Cl.-Exp.	B/T	Avg.	HR	RBI	Notable
Matt Liuzza	C	So.-1L	R/R	.321	6	23	.200 (3-for-15) in last four games
Clay Harris	1B/3B	Jr.-2L	R/R	.301	4	21	Named SEC Player of the Week 4/5
Blake Gill	2B/SS	Jr.-2L	L/R	.319	0	16	.176 (3-for-17) in last five games
Ivan Naccarata	3B	Sr.-1L	L/R	.261	4	19	3-for-7, 1 HR, 2 RBI in AU series
<b>or</b>							
Will Harris	1B	So.-1L	R/R	.396	2	14	.222 (2-for-9) in last four games
Derek Hebert	SS	Jr.-JC	L/R	.286	1	5	.167 (2-for-12) in last three games)
<b>or</b>							
Matt Horwath	2B	Fr.-RS	R/R	.280	1	9	0-for-7 in last two games
Ryan Patterson	LF	Jr.-1L	R/R	.314	4	27	.250 (6-for-24) in last five games
J.C. Holt	CF	Jr.-2L	L/R	.393	4	22	.250 (5-for-20) in last five games
Jon Zeringue	RF	Jr.-2L	R/R	.372	8	28	.263 (5-for-19) in last five games)
Nick Stavinoha	DH	Jr.-JC	R/R	.319	4	21	.313 (5-for-16) in last five games)

## Tigers Blanked by Tulane on Tuesday

LSU's 1-0 loss to No. 12 Tulane on Tuesday at Alex Box Stadium marked the first time the Tigers have been shut out since May 3, 2003 -- a 5-0 loss to Mississippi State in Starkville. Tuesday's game also marked the first shutout suffered by LSU at home since June 1, 2002 -- a 5-0 loss to Louisiana-Lafayette in the second round of the NCAA Baton Rouge Regional.

LSU had won 11 straight games against Louisiana schools prior to Tuesday's loss; the Tigers are now 36-9 versus in-state foes during coach Smoke Laval's three-year tenure. LSU pitchers Jason Determann, Lane Mestepey and Jordan Faircloth combined to limit Tulane to one run on seven hits in Tuesday's game, lowering the team ERA to 2.81.

However, the LSU offense produced a season-low four hits for the second consecutive game. The Tigers are hitting .247 in their last five games as their team batting average has dropped from .342 to .327 in that span.

## Notes from LSU's Series Victory at Auburn Last Weekend

- LSU won two of three games at #11 Auburn last weekend to win its third consecutive SEC series this year and its fifth in a row over the past two seasons. Two of the three series victories this year have come on the road against Top 15 teams (Auburn and South Carolina).
- The Tigers are 10-3 in games away from Alex Box Stadium this season, 4-2 in SEC road games. The Auburn series completed a stretch in which LSU played eight of 11 games on the road; the Tigers will play seven of their next eight games in Alex Box Stadium.
- Freshman left-hander Clay Dirks turned in another stellar performance, posting a complete-game victory Saturday at Auburn. Dirks, making his first career SEC road start, limited Auburn to three runs on five hits in nine innings with no walks and seven strikeouts. He fired 120 pitches in recording his second complete-game victory this season; he also shut out Tulane on March 2.
- LSU's 5-3 win over Auburn on Saturday marked the first time in five games this season that the Tigers recorded a victory after trailing through seven innings. Auburn led 3-2 after seven innings Saturday, but Clay Harris hit a game-tying homer in the eighth and Ivan Naccarata's two-run, pinch-hit HR in the ninth lifted LSU to the win.
- Senior right-hander Nate Bumstead enjoyed his best performance of the season, blanking Auburn for eight innings in a 3-2 LSU victory. Bumstead limited AU to just two hits in eight scoreless innings before allowing two runs on three hits in the ninth. Reliever Greg Smith earned a save to preserve the victory for Bumstead, who worked 8.1 innings and recorded two walks and three strikeouts to improve his record to 5-0.

## Clay Harris Named SEC Player of the Week Monday

LSU first baseman Clay Harris, who led LSU to the series victory at Auburn last weekend, was named Monday as the SEC Player of the Week by the league office.

Harris enjoyed a superb week, batting .467 (7-for-15) in four games with three homers, one double, eight RBI, six runs, a 1.133 slugging percentage and a .500 on-base percentage. Harris hit .455 (5-for-11) in the Auburn series with two homers, one double, seven RBI, three runs, a 1.091 slugging percentage and a .462 on-base percentage.

Harris, who led LSU in home runs last season with 16, entered the week with just one this season; however, he homered in three straight games to raise his total to four.

His solo shot at UNO on Tuesday broke a 23-game drought without a homer. Harris hit a two-out, two-run blast in the top of the ninth inning Friday at Auburn to send the game to extra

innings, and his eighth-inning solo homer Saturday at Auburn tied the contest at 3-3 as LSU went on to a 5-3 win.

Harris broke a scoreless tie on Sunday at Auburn with a seventh-inning RBI single, sparking the Tigers to a 3-2 victory.

### Liuzza Named SEC Player of the Week on March 22

LSU catcher **Matt Liuzza**, a sophomore from Metairie, La., was named March 22 as the SEC Player of the Week after leading the Tigers to a series victory at South Carolina.

Liuzza hit three homers and one double in the series, collecting five RBI and posting a .933 slugging percentage. He hit two homers in Game 3 (a 12-7 victory), becoming the first LSU player to have a multi-homer game this season.

Liuzza's two homers came against USC ace Matt Campbell, who had not allowed run in 27.2 innings entering the game. Liuzza hit a solo shot in the second inning to tie the game at 1-1, and his three-run blast in the fourth gave the Tigers a 4-1 lead they would never relinquish.

Liuzza was 6-for-15 (.353) at the plate in LSU's four games from March 16-21 -- including a 14-0 victory over UNO -- with one double, four homers, seven RBI and five runs.

Liuzza compiled a 14-game streak -- the longest of his career -- from Feb. 14-March 12, exceeding the 12-game streak he compiled during the 2003 season. During the 2004 streak, Liuzza batted .407 (22-for-54) with five doubles, two homers, 13 RBI and 10 runs.

**Liuzza's name appears on the first Johnny Bench Award "Watch List" released in early March. The Johnny Bench Award is given annually to the nation's outstanding collegiate catcher. Former LSU Brad Cresse was the first recipient of the award in 2000.**

The 2004 Johnny Bench Award ceremony will take place on June 30, in Wichita, Kan.

### Dirks Named To Roger Clemens Award Watch List

Freshman left-hander **Clay Dirks'** name has been added to the "Watch List" for the 2004 Roger Clemens Award, which is given to the nation's outstanding collegiate pitcher. The "Cy Young Award" of college baseball, the Clemens Award ceremony will take place on July 15 in Houston.

In a four-hit shutout of Tulane on March 2, Dirks allowed just two Green Wave runners to reach second base, and he retired 20 of the final 22 batters he faced. For that effort, Dirks was named the SEC Pitcher of the Week by the league office, and he earned National Pitcher of the Week recognition from the National Collegiate Baseball Writers Association.

Dirks, a redshirt freshman from Hernando, Miss., allowed just one double and three singles against Tulane, and recorded one walk and seven strikeouts. Dirks, who was making just the third start of his collegiate career, missed the 2003 season after undergoing surgery on his elbow in the summer of 2002.

Dirks' gem marked the first complete-game shutout for an LSU pitcher since Brian Wilson blanked Florida on five hits on March 14, 2003. The game was LSU's first shutout as a team since April 15, 2003, when the Tigers blanked Tulane, 8-0, in Alex Box Stadium.

### Smoke Gets Career Victory No. 350

**Smoke Laval**, in his third season as the Tigers' head coach, earned his 350th career victory on March 27 when the Tigers defeated Mississippi State, 11-6. The 2003 SEC Coach of the Year, Laval has a 113-50-1 (.692) mark at LSU and a 354-209-1 (.629) record in 10 seasons as a collegiate head coach. He served as the head coach at Louisiana-Monroe for seven seasons (1994-2000) prior to taking the reins of the LSU program as head coach. Laval was an LSU assistant coach for 10 seasons (1984-93), helping to lead the Tigers to two national championships (1991, 1993), six College World Series appearances and five SEC titles.

### Will Harris Named Louisiana Player of the Week on March 16

Sophomore 1B **Will Harris**, the younger brother of LSU's all-SEC infielder Clay Harris, batted .875 (7-for-8) during the week of March 8-14 with one homer, six RBI and two runs. He was named on March 16 as the Louisiana Player of the Week by the Louisiana Sportswriters Association.

Will Harris was 4-for-4 at the plate with one run and two RBI in LSU's win over UL-Monroe March 9, and he launched a grand slam -- LSU's first this season -- in the Tigers' victory over Southeastern Louisiana March 12.

From March 7-12, Will Harris collected eight hits in eight at-bats over three games versus Tulane, UL-Monroe and Southeastern Louisiana.

### ESPN/Sports Weekly (April 5)

1. Texas (22) (31-4)
2. Stanford (15) (23-4)
3. **LSU (2) (24-5)**
4. Rice (1) (24-6)
5. Miami, Fla. (24-6)
6. Ole Miss (24-4)
7. South Carolina (23-5)
8. Long Beach State (20-8)
9. Notre Dame (22-3)
10. Wichita State (16-3)
11. Southern Miss (24-4)
12. Nebraska (21-5)
13. North Carolina (23-6)
14. Auburn (21-9)
15. Arizona State (22-9)
16. Tulane (22-8)
17. Texas A&M (26-8)
18. Tennessee (25-5)
19. Florida (25-8)
20. UC-Irvine (19-6-1)
21. Florida State (23-9)
22. East Carolina (24-6)
23. Central Florida (27-5)
24. Florida Atlantic (26-7)
25. Washington (17-8-1)

### 2004 SEC Standings (April 9)

Eastern Division			
Team	SEC	Pct.	Overall
Tennessee	6-3	.667	26-5
Georgia	5-4	.556	20-10
Florida	5-4	.556	25-8
South Carolina	4-5	.444	23-6
Vanderbilt	4-5	.444	22-7
Kentucky	2-7	.222	15-13
Western Division			
Team	SEC	Pct.	Overall
Ole Miss	7-2	.778	25-4
LSU	6-3	.667	24-6
Arkansas	5-4	.556	20-11
Auburn	4-5	.444	22-9
Alabama	3-6	.333	20-11
Miss. State	3-6	.333	19-10

### This Week in the SEC (April 9-11)

(All times are Central)

#### Friday-Sunday, April 9-11

Vanderbilt at Alabama • 6:30 p.m., 4 p.m., 2 p.m.

Arkansas at LSU • 6:30 p.m., 2 p.m., 1 p.m.

Auburn at Ole Miss • 6:30 p.m., 4 p.m., 1:30 p.m.

Florida at South Carolina • 6 p.m., 2 p.m., 12:30 p.m.

Miss. State at Kentucky • 5:30 p.m., 1 p.m., Noon

Tennessee at Georgia • 6 p.m., 3 p.m., Noon

## 2004 LSU TV Schedule

Feb. 14	at UCF	Noon	JSN
Feb. 15	at UCF	Noon	JSN
March 2	at Tulane	7 p.m.	JSN
March 9	at UL-Monroe	6:30 p.m.	JSN
March 14	SE Louisiana	1 p.m.	Cox
March 21	at South Carolina	12:30 p.m.	JSN
March 30	at New Orleans	6:30 p.m.	JSN
April 4	at Auburn	1:30 p.m.	JSN
April 10	Arkansas	2 p.m.	Fox
April 11	Arkansas	1 p.m.	Cox
April 16	Georgia	6:30 p.m.	Cox
April 24	at Tennessee	6 p.m.	CSS
April 25	at Tennessee	1 p.m.	JSN
April 27	vs. Tulane (tape-delayed)	10 p.m.	Cox
April 30	Alabama	6:30 p.m.	Cox
May 9	at Kentucky	Noon	JSN
May 14	Vanderbilt	6:30 p.m.	Cox
May 22	at Ole Miss	3 p.m.	Fox
May 23	at Ole Miss	1:30 p.m.	JSN

**JSN - Jumbo Sports Network**

**Cox - Cox Sports Television**

**Fox - Fox Sports Southwest (SEC-TV)**

**CSS - Comcast Sports Southeast**

*All Times are Central and Subject to Change*

### LSU-TU Seek to Re-Claim Attendance Mark

Two years ago, the state of Louisiana laid claim to the college baseball single game attendance record when an April 2002 game between Tulane and LSU drew a crowd of 27,673 in the Louisiana Superdome.

But on March 11, 2004, a crowd of 40,106 fans packed San Diego's brand new Petco Park to watch a college game between San Diego State and Houston, breaking the mark set at that Tulane-LSU contest and threatening the attendance dominance of Louisiana college baseball fans.

The LSU-Tulane game on April 27, 2004 provides an opportunity for Louisiana to restake its claim as the nation's best as LSU and Tulane, once again ranked among the Top 20 teams in the country, will meet for the third time this season in a 7 p.m. contest in the Superdome.

Tickets for the game are currently on sale and can be purchased by calling the Tulane Ticket Office at (504) 861-WAVE, the LSU Ticket Office at 225-LSU-2184 or 1-800-960-8587, online at [www.ticketmaster.com](http://www.ticketmaster.com) or by visiting any Ticketmaster Outlet.

Ticket prices are \$15 and \$12 for adult reserved seats and \$8 for youth reserved sections. General admission tickets are \$6 for adults and \$4 for youth.

## Mestepey Seeks to Enter Top 10 List for LSU Victories

Junior left-hander **Lane Mestepey** earned his 25th career victory March 13 against Southeastern Louisiana as he pitched 6.2 innings, allowing just one run on eight hits with four walks and four strikeouts.

Mestepey, a two-time all-SEC selection, needs one more victory to move into the LSU Top 10 list for pitching wins. He is currently one victory behind Mark Guthrie (26 wins, 1984-87) for 10th place on the all-time LSU list.

Mestepey has a 25-9 mark during his three seasons on the mound for the Tigers.

## The LSU Injury Report

**INF Bryan Harris** -- Harris, a transfer from Santa Ana (Calif.) College, was projected to be the Tigers' starter at third base; however, a hernia operation limited his participation during fall practice, and he underwent arthroscopic surgery in January to remove bone chips from his right knee. He is scheduled to receive a medical redshirt this season.

**INF Matt Horwath** -- Horwath, a medical redshirt in 2003 after undergoing right shoulder surgery, started LSU's first seven games at shortstop this season before experiencing soreness in the shoulder. An MRI was performed on the shoulder on March 2, and the results showed no new injuries. Horwath has been cleared to play as long as he does not experience continued soreness in the shoulder.

**RHP Brandon Nail** -- LSU's closer at the beginning of 2003, he pitched in just six games last season before suffering a torn labrum in his shoulder, which required surgery. He could return to the mound at some point this season, depending upon the progress of his rehabilitation.

**OF Quinn Stewart** -- A starter in 37 games last season, Stewart had the hamate bone in his left wrist removed in early March, and he will receive a redshirt this season. Even without the wrist injury, Stewart likely would have received a redshirt this year due to the tremendous depth LSU has in the outfield. With current starting outfielders Jon Zeringue, J.C. Holt and Ryan Patterson expected to be drafted this June, Stewart should be one of the outfield starters in 2005.

## SEC Coaches Select LSU to Repeat as League Champion

The LSU Tigers are the favorite to win the Southeastern Conference Baseball Championship, as voted by the league's 12 baseball coaches in the 13th annual preseason SEC poll. The Tigers seek to capture their 14th SEC Championship, having won or shared the title three times in the past eight seasons (1996, 1997 & 2003) and seven times since 1990. LSU won the both the overall SEC Championship and Western Division titles in 2003. In the overall SEC Champion vote, LSU received 11 of the 12 championship votes in the poll, the most possible by one team. South Carolina received the other vote.

## LSU Leaders in 2004 SEC Statistical Rankings

### TEAM CATEGORIES

#### **Batting Average**

3. LSU (.327)

#### **Fielding Percentage**

2. LSU (.974)

#### **Home Runs**

2. LSU (40)

#### **Hits**

3. LSU (359)

#### **Slugging Percentage**

2. LSU (.518)

#### **ERA**

2. LSU (2.81)

#### **Runs Scored**

5. LSU (243)

#### **Doubles**

4. LSU (73)

### INDIVIDUAL CATEGORIES

#### **Batting Average**

5. J.C. Holt (.393)

9. Jon Zeringue (.372)

#### **Runs Scored**

5. J.C. Holt (34)

#### **Doubles**

3. Jon Zeringue (14)

4. Ryan Patterson (12)

#### **Total Bases**

6. Jon Zeringue (82)

#### **Slugging Percentage**

5. Jon Zeringue (.726)

#### **Hits**

2. J.C. Holt (48)

#### **ERA**

2. Clay Dirks (1.90)

#### **Opp. Batting Average**

2. Clay Dirks (.174)



**41**  
**Nate Bumstead**

RH Pitcher  
6-1, 210, R-R, Sr., 1L  
Las Vegas, Nev. (College of Southern Idaho)

- Emerged as one of the top pitchers in the Southeastern Conference in 2003, earning second-team all conference honors
- Injured right shoulder in Feb. 3 intrasquad game; an MRI revealed a torn labrum, however, team doctor has cleared him to pitch
- Defeated Miss. State (March 28), limiting the Bulldogs to two earned runs on 10 hits in 7.1 innings with no walks and two Ks
- Defeated Auburn (April 4), pitching a season-high 8.1 innings and allowing two runs on five hits with three strikeouts

**Bumstead's LSU Career Highs**

Innings: 9.0 (twice)  
Strikeouts: 10 vs. Ole Miss (4/13/03)  
Hits Allowed: 11 vs. Mississippi State (5/23/03)  
Runs: 8 (twice)  
Earned Runs: 8 (twice)  
Walks: 4 vs. Tennessee (4/27/03)



**33**  
**Jason Determann**

Pitcher  
5-10, 170, R-L, So., 1L  
Baton Rouge, La. (Catholic HS)

- Outstanding southpaw who earned 2003 Freshman all-America honors as a long reliever and part-time starter
- 10-1 career record at LSU
- Fired 11 consecutive scoreless innings before allowing two runs at Centenary (March 23)
- Earned victory in Tigers' season opener at Central Florida (Feb. 13), allowing one run on three hits in four innings with one walk and two strikeouts
- Suffered first career defeat despite strong outing vs. Tulane (April 6); limited the Wave to one run on six hits with no walks and three Ks in six innings in a 1-0 loss

**Determann's LSU Career Highs**

Innings: 8.0 vs. New Orleans (4/30/03)  
Strikeouts: 7 (twice, most recently at New Orleans (3/30/04)  
Hits Allowed: 8 (twice)  
Runs: 6 vs. SE Louisiana (4/23/03)  
Earned Runs: 5 vs. SE Louisiana (4/23/03)  
Walks: 4 vs. South Carolina (6/15/03)



**13**  
**Clay Dirks**

LH Pitcher  
6-4, 235, L-L, Fr., RS  
Hernando, Miss. (Hernando HS)

- Named National Pitcher of the Week (NCBWA) and SEC Pitcher of the Week after firing a four-hit shutout (1 BB, 7 Ks) versus eighth-ranked Tulane on March 2 at Zephyr Field in Metairie, La. . . . Allowed just two Tulane base runners to advance to second base and retired 20 of the final 22 batters he faced
- Pitched 17.1 consecutive innings without allowing an earned run in a three-game stretch from Feb. 22-March 9
- Defeated Miss. State (March 27) in first career SEC start, limiting the Bulldogs to two runs on five hits in eight innings with one walk and seven Ks
- Complete-game victory at Auburn (April 3), allowing three runs on five hits with no walks and seven strikeouts
- Named to the "Watch List" for the 2004 Roger Clemens Award, given to the nation's outstanding collegiate pitcher
- Ranked No. 2 in the SEC in ERA (1.90) and No. 2 in Opp. Batting Average (.174)

**Dirks' LSU Career Highs**

Innings: 9 vs. Tulane (3/2/04); at Auburn (4/3/04)  
Strikeouts: 7 on three occasions, most recently at Auburn (4/3/04)  
Hits Allowed: 6 at Central Florida (2/15/04)  
Runs: 3 (twice)  
Earned Runs: 3 (twice)  
Walks: 3 (twice)



**29**  
**Jordan Faircloth**

Pitcher  
6-3, 215, R-R, Jr., 1L  
Alexandria, La. (Alexandria HS)

- Talented pitcher with a side-arm delivery who has taken on a major relief role in 2004 after making his LSU debut last season
- Has allowed just one earned run in last 10.2 innings (four appearances)
- Pitched brilliantly in relief vs. Miss. State (March 26), working five shutout innings with three hits, two walks and two strikeouts
- Earned first career save vs. SE Louisiana (March 13), working 2.1 innings with no runs, four hits, no walks and one strikeout

**Faircloth's LSU Career Highs**

Innings: 5.0 vs. Miss. State (3/26/04)  
Strikeouts: 3 at Centenary (3/23/04) ; at Auburn (4/2/04)  
Hits Allowed: 5 at Auburn (4/2/04)  
Runs: 3 (twice)  
Earned Runs: 3 (twice)  
Walks: 2 (twice)



**3**  
**Blake Gill**

Infielder  
5-10, 190, L-R, Jr., 2L  
Bradenton, Fla. (Manatee HS)

- Talented player who earned 2003 second-team all-SEC recognition at second base
- Hit .462 (6-for-13) in Miss. State series with two doubles, four runs and one RBI
- Tied career-high with 4 hits vs. Miss. State on March 28
- Has also produced three 3-hit games: at UCF (Feb. 15), vs. Houston (March 5), vs. SE Louisiana (March 13)

**Gill's LSU Career Highs**

At-Bats: 6 at Georgia (3/22/03); at South Carolina (3/19/04)  
Hits: 4 vs. Mercer (2/17/02); 4 vs. Miss. State (3/28/04)  
Runs Scored: 3 (three occasions)  
Doubles: 1 (several occasions)  
Triples: 1 (several occasions)  
Home Runs: 1 (several occasions)  
RBI: 6 vs. Georgia (4/14/02)  
Stolen Bases: 1 (several occasions)



**21**  
**Clay Harris**

Infielder  
6-4, 230, R-R, Jr., 2L  
Slidell, La. (Slidell HS)

- Powerful slugger who became a regular in the LSU lineup last season in early March and emerged as a 2003 first-team all-SEC performer at first base; has played this season as starter at both first base and third base
- Named SEC Player of the Week on April 5 after leading LSU to a series victory at Auburn; hit .455 (5-for-11) in the Auburn series with two homers, one double, seven RBI, three runs.
- Already has three triples this season after recording no 3Bs in his first two LSU seasons
- Solo homer at UNO (March 30), ending 23-game stretch without a HR; homered in three straight games from March 30-April 3

**C. Harris' LSU Career Highs**

At-Bats: 6 (three occasions)  
Hits: 3 (several occasions)  
Runs Scored: 3 (twice)  
Doubles: 2 (twice)  
Triples: 1 (three occasions)  
Home Runs: 2 (three occasions)  
RBI: 6 vs. Ole Miss (4/13/03)  
Stolen Bases: 1 vs. Miss. State (5/23/03)



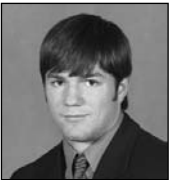
**25**  
**Will Harris**

First Baseman  
6-3, 240, R-R, So., 1L  
Slidell, La. (Slidell HS)

- Named Louisiana Player of the Week on March 16 after batting .875 (7-for-8) in a three-game stretch (vs. UL-Monroe and SE La.) with a grand slam and six RBI
- Recorded eight hits in eight at-bats in a four-game stretch from March 2-13
- 4-for-4 at UL-Monroe (March 9) with two RBI
- 2-for-2 with a grand slam - LSU's only slam this season -- vs. SE Louisiana (March 12)

**W. Harris' LSU Career Highs**

At-Bats: 5 at Georgia (3/22/03); at South Carolina (3/21/04)  
Hits: 4 at UL-Monroe (3/9/04)  
Runs Scored: 2 (several occasions)  
Doubles: 1 (several occasions)  
Triples: none  
Home Runs: 1 (four occasions)  
RBI: 4 vs. SE Louisiana (3/12/04)  
Stolen Bases: none



**2**  
**Derek Hebert**

Infielder  
5-10, 180, L-R, Jr., JC  
New Iberia, La. (El Camino College)

- Excellent all-around prospect that transferred to LSU after one year at El Camino College in Torrance, Calif.
- Has started 14 games at shortstop as regular SS Matt Horwath has been bothered at times by a sore arm
- Has recorded five two-hit games this season

**Hebert's LSU Career Highs**

At-Bats: 4 (several occasions)  
Hits: 2 (several occasions)  
Runs Scored: 2 (three occasions)  
Doubles: 1 (four occasions)  
Triples: none  
Home Runs: 1 at Central Florida (Feb. 14)  
RBI: 1 (several occasions)  
Stolen Bases: none



**1**  
**J.C. Holt**

Outfielder  
5-9, 170, L-R, Jr., 2L  
Sieper, La. (Oak Hill HS)

- A 2004 pre-season all-American who was named in 2003 as the MVP of the Cape Cod Baseball League
- Ranked No.2 in the SEC in hits (45); No. 5 in the league in batting average (.393) and in runs scored (34)
- Batting average remained above .400 for 19 straight games; fell to .393 after 0-for-4 outing vs. Tulane (April 6)
- 10-game hit streak from Feb. 22-March 12, batting .438 (21-for-48) during the streak with three doubles, one triple, one homer, nine RBI and 12 runs

**Holt's LSU Career Highs**

At-Bats: 6 (several occasions)  
Hits: 4 (several occasions)  
Runs Scored: 3 (several occasions)  
Doubles: 2 (twice)  
Triples: 1 (several occasions)  
Home Runs: 2 vs. Northeastern (5/30/03)  
RBI: 5 vs. Northeastern (5/30/03)  
Stolen Bases: 3 vs. Northwestern St. (2/8/03)



**34**  
**Matt Horwath**

Infielder  
5-9, 175, R-R, Fr., RS  
Lake Mary, Fla. (Lake Mary HS)

- Skilled infielder who played as LSU's starting shortstop for the first eight games of the 2003 season before suffering a right shoulder injury that required surgery
- Has missed 14 games this season due to soreness in his surgically-repaired shoulder
- 2-for-3 with one HR and two RBI at Central Florida (Feb. 14)

**Horwath's LSU Career Highs**

At-Bats: 5 (several occasions)  
Hits: 3 vs. UL-Monroe (2/17/04)  
Runs Scored: 2 (several occasions)  
Doubles: 1 (several occasions)  
Triples: none  
Home Runs: 1 (twice)  
RBI: 2 (three occasions)  
Stolen Bases: 1 vs. Northwestern St. (2/8/03)



**14**  
**Matt Liuzza**

Catcher  
6-0, 190, R-R, So., 1L  
Kenner, La. (Rummel HS)

- Played brilliantly last season as a true freshman, starting 54 games at catcher and leading the Tigers in hitting during the post-season
- Has been named to the "Watch List" for the 2004 Johnny Bench Award, given to the nation's outstanding collegiate catcher
- Named SEC Player of the Week March 22 after leading LSU to series win over S. Carolina
- Career-best 14-game hit streak from Feb. 14-March 9; batted .407 (22-for-54) during the streak with five doubles, two homers, 13 RBI and 10 runs

**Liuzza's LSU Career Highs**

At-Bats: 6 at South Carolina (3/21/04)  
Hits: 3 (four occasions)  
Runs Scored: 3 (twice)  
Doubles: 2 vs. Auburn (5/10/03)  
Triples: none  
Home Runs: 2 at South Carolina (3/21/04)  
RBI: 4 at South Carolina (3/21/04)  
Stolen Bases: 1 vs. Northwestern St. (2/9/03)



**35**  
**Justin Meier**

RH Pitcher  
6-0, 210, R-R, So., 1L  
Windermere, Fla. (West Orange HS)

- Superb hurler who made an immediate impact last season as a true freshman, pitching in the SEC weekend rotation and earning '03 Freshman all-America recognition
- Has not allowed more than four earned runs in any of his eight starts this season
- Tied career-high with eight Ks at South Carolina (March 19); limited the Gamecocks to three runs on seven hits in 8.1 innings with three walks
- Defeated SE Louisiana (March 12), limiting the Lions to one run on six hits in seven innings with two BB and two Ks
- Limited Texas St. (Feb. 27) to just one run on four hits in 7.1 innings with two BB and two Ks

**Meier's LSU Career Highs**

Innings: 9.0 (twice)  
Strikeouts: 9 at Auburn (4/2/04)  
Hits Allowed: 12 vs. Baylor (6/8/03)  
Runs: 7 vs. Mississippi State (3/26/04)  
Earned Runs: 5 (twice)  
Walks: 5 at Mississippi State (5/2/03)



**46**  
**Lane Mestepey**

LH Pitcher  
6-0, 195, L-L, Jr., 2L  
Zachary, La. (Central Private HS)

- LSU's No. 1 pitcher in 2001 and 2002; returned to the mound this season after receiving a medical redshirt in 2003 due to a shoulder injury
- A two-time first-team all-SEC selection with a 25-9 career record in 43 starts
- Has allowed only one run in four of his six starts this season
- Defeated Central Florida (Feb. 14) in his first outing in 20 months, limiting the Knights to one run on five hits in five innings with two walks and one strikeout
- Pitched season-high 6.2 innings in defeating SE Louisiana (March 13), limiting SLU to one run on eight hits with four walks and four strikeouts

**Mestepey's LSU Career Highs**

Innings: 10.0 at Tulane (6/1/01)  
Strikeouts: 8 vs. Long Beach State (3/2/02)  
Hits Allowed: 13 vs. Minnesota (5/25/01)  
Runs: 8 (twice)  
Earned Runs: 8 vs. Minnesota (5/25/01)  
Walks: 5 at Ole Miss (3/23/02)



**7**  
**Ivan Naccarata**

Infielder  
5-10, 185, L-R, Sr., 1L  
Longueuil, Quebec (Chipola JC)

- Joined the LSU program in January, 2003, and made an immediate impact as the Tigers' starting third baseman
- Has played recently on a platoon basis, starting against right-handed pitchers
- Played for three weeks during the fall of 2003 with the Canadian National Team
- Fluent in four languages - English, French, Slovenian and Italian
- Career high seven RBI and two homers in win over MSU (3/28)
- Launched two-run pinch-hit homer in ninth inning to give LSU a 5-3 win at Auburn (April 3)

**Naccarata's LSU Career Highs**

At-Bats: 6 (three occasions)  
Hits: 4 vs. Tulane (5/31/03)  
Runs Scored: 4 (twice)  
Doubles: 2 (twice)  
Triples: 1 (five occasions)  
Home Runs: 2 vs. Miss. State (3/28/04)  
RBI: 7 vs. Miss. State (3/28/04)  
Stolen Bases: 1 (several occasions)



**12**  
**Ryan Patterson**

Outfielder  
5-11, 200, R-R, Jr., 1L  
Rowlett, Texas (Texarkana College)

- A 2003 first-team all-SEC selection as a designated hitter
- Voted a 2004 first-team pre-season all-American by the National Collegiate Baseball Writers Association
- 11-game hit streak from March 13-April 2; batted .360 (18-for-50) during the streak with five doubles, two homers and 12 RBI
- 4-for-5 with a career-high five RBI (1 2B, two runs) vs. Texas State (Feb. 29)
- Six three-hit games, including 3-for-6 at UCF (Feb. 14) with one HR and three RBI; 3-for-6 at South Carolina (March 21) with one RBI and one run; 3-for-5 vs. Miss. State (March 27) with 1 2B, 1 HR and 3 RBI

**Patterson's LSU Career Highs**

At-Bats: 6 (several occasions)  
Hits: 4 (three times, most recently vs. Texas State (2/29/04))  
Runs Scored: 4 vs. Mississippi State (5/24/03)  
Doubles: 2 (three occasions)  
Triples: 1 vs. Mississippi State (5/24/03)  
Home Runs: 1 (several occasions)  
RBI: 5 vs. Texas State (2/29/04)  
Stolen Bases: 1 (several occasions)



**27**  
**Greg Smith**

LH Pitcher  
6-0, 190, L-L, So., 1L  
Alexandria, La. (Alexandria HS)

- Talented hurler who has developed into the Tigers' closer in recent weeks
- Has allowed just one run in 18.2 innings this season
- First career victory at South Carolina (March 19); worked two scoreless innings, allowing one hit with four strikeouts
- Earned save at Auburn (April 4), preserving a 3-2 win by inducing a game-ending double play grounder with runners at the corners
- Worked 2.1 innings vs. Houston (March 6), allowing one run on two hits with season-high four strikeouts
- Has 11 strikeouts in his last 9.1 innings, allowing four hits, no runs, two walks

**G. Smith's LSU Career Highs**

Innings: 4.1 vs. Tulane (4/29/03)  
Strikeouts: 5 at Mississippi State (5/2/03)  
Hits Allowed: 8 at Long Beach State (2/28/03)  
Runs: 8 at Long Beach State (2/28/03)  
Earned Runs: 5 vs. Loyola-New Orleans (5/6/03)  
Walks: 2 (two occasions)



**43**  
**Nick Stavinoha**

DH/Catcher  
6-1, 220, R-R, Jr., JC  
Houston, Texas (San Jacinto JC)

- Had one of the most prolific fall intrasquad seasons in LSU history, batting a team-high .432 with six homers in 37 at-bats
- Played two seasons at San Jacinto Junior College in Houston where he recorded 37 career home runs and 132 RBI
- Posted an eight-game hitting streak in early March, batting .379 (11-for-29) during the streak with two doubles, one homer and seven RBI
- Began his collegiate career in 2000 as a long snapper for the University of Houston football team

**Stavinoha's LSU Career Highs**

At-Bats: 5 (several occasions)  
Hits: 2 (several occasions)  
Runs Scored: 3 at New Orleans (3/30/04)  
Doubles: 1 (several occasions)  
Triples: none  
Home Runs: 1 (four occasions)  
RBI: 2 (four occasions)  
Stolen Bases: 1 (three occasions)



**16**  
**Jon Zeringue**

Outfielder  
6-2, 205, R-R, Jr., 2L  
Thibodaux, La. (E.D. White HS)

- Outstanding 2003 second-team all-SEC performer who was the third-round selection of the Chicago White Sox in the 2001 major league draft
- A 2004 *Baseball America* second-team pre-season all-American
- 3-for-5 with 2 homers, 2 RBI and 3 runs at South Carolina (March 21)
- Drove in a career-high five runs in victory over Miss. State (March 27)
- No. 3 in the SEC in 2Bs (14), No. 5 in slugging pct. (.726), No. 6 in total bases (82) and No. 9 in batting average (.372)

**Zeringue's LSU Career Highs**

At-Bats: 6 at Vanderbilt (4/20/03)  
Hits: 4 (twice)  
Runs Scored: 4 vs. Baylor (6/8/03)  
Doubles: 2 (three occasions)  
Triples: 1 vs. Houston (3/7/04)  
Home Runs: 2 (twice; most recently at South Carolina (3/21/04))  
RBI: 5 vs. Miss. State (3/27/04)  
Stolen Bases: 2 vs. SE Louisiana (4/23/03)

## LSU Lists of Note

### College World Series Championships

Southern California	12
<b>LSU</b>	<b>5</b>
Arizona State	5
Texas	5
Miami (Fla.)	4
Arizona	3
Cal State Fullerton	3
Minnesota	3
California	2
Michigan	2
Oklahoma	2
Stanford	2

### NCAA Tournament Winning Percentage

<b>LSU</b>	<b>.728 (99-37)</b>
Southern California	.723 (167-64)
Arizona State	.692 (119-53)
Miami (Fla.)	.684 (147-68)
Stanford	.677 (113-54)
Texas	.664 (182-92)

### CWS Winning Percentage

Southern California	74-26	.740
Minnesota	17-7	.708
<b>LSU</b>	<b>29-15</b>	<b>.659</b>
Arizona State	55-30	.647
Missouri	18-11	.621
Wichita State	16-11	.593
Stanford	38-27	.585
Texas	70-51	.579
Miami (Fla.)	44-32	.579
Cal State Fullerton	27-20	.574

### CWS Appearances

Texas	30
Southern California	21
Miami (Fla.)	20
Oklahoma State	19
Arizona State	18
Florida State	18
Stanford	15
Arizona	14
<b>LSU</b>	<b>12</b>
Cal State Fullerton	12

### Coaches' CWS Winning Percentage

Rod Dedeaux, Southern California	.789 (60-16)
Bobby Winkles, Arizona State	.762 (16-5)
Dick Siebert, Minnesota	.708 (17-7)
<b>Skip Bertman, LSU</b>	<b>.690 (29-13)</b>
Jerry Kindall, Arizona	.682 (15-7)
Augie Garrido, CS-Fullerton/Texas	.650 (26-14)
Jim Morris, Miami (Fla.)	.621 (18-11)
Toby Greene, Oklahoma State	.625 (15-9)
Hi Simmons, Missouri	.621 (18-11)
Jim Brock, Arizona State	.600 (36-24)
Cliff Gustafson, Texas	.595 (44-30)

### Coaches' CWS Victories

Rod Dedeaux, Southern California	60
Cliff Gustafson, Texas	44
Jim Brock, Arizona State	36
Mark Marquess, Stanford	34
<b>Skip Bertman, LSU</b>	<b>29</b>
Ron Fraser, Miami (Fla.)	26
Augie Garrido, CS-Fullerton/Texas	26

### Current Consecutive Regional Appearances

Miami (Fla.)	31 (1973-2003)
Florida State	26 (1978-2003)
Clemson	17 (1987-2003)
<b>LSU</b>	<b>15 (1989-2003)</b>
Cal State Fullerton	12 (1992-2003)
Stanford	10 (1994-2003)
Rice	9 (1995-2003)
South Alabama	9 (1995-2003)

### 2003 Major League Players

<b>LSU</b>	<b>16</b>
Southern California	14
UCLA	12
Cal State Fullerton	12
Stanford	12
Miami (Fla.)	11
Florida State	10
Georgia Tech	10
Pepperdine	9
Arizona State	8
Tennessee	8

### Draft Selections (1994-2003)

Arizona State	83
Miami (Fla.)	74
Cal State Fullerton	72
Long Beach State	66
Stanford	64
<b>LSU</b>	<b>63</b>
Texas A&M	63
Southern California	62
Rice	61
Wichita State	58

## LSU by the Numbers in 2004

Home	14-3
Away	10-3
Neutral Sites	0-0
Day	12-3
Night	12-3
On Jumbo Sports	6-1
On Cox Sports	0-0
On SEC-TV	0-0
Vs. SEC	6-3
Vs. SEC West	4-2
Vs. SEC East	2-1
Non-SEC Games	18-3
Vs. Louisiana opponents	8-1
Vs. Ranked opponents	7-4
Vs. Atlantic Sun	2-1
Vs. C-USA	3-2
Vs. Mid-Continent	1-0
Vs. Ohio Valley	3-0
Vs. Southland	7-0
Vs. Sun Belt	2-0
Vs. SWAC	0-0
Doubleheaders	0-0
Game 1 of weekend series	6-2
Game 2 of weekend series	6-2
Game 3 of weekend series	6-1
Sunday	6-1
Tuesday	6-1
Wednesday	0-0
Friday	6-2
Saturday	6-2
One-run games	3-3
Extra inning games	2-2
Shutouts	2-1
Games in which LSU scores first	15-3
Games in which opponent scores first	9-3
When LSU scores 10+	10-0
When LSU scores <5	3-2
When opponent scores 10+	0-2
When opponent scores <5	21-1
When LSU leads after 6 innings	19-0
When LSU trails after 6 innings	0-5
When tied after 6 innings	5-1
When LSU leads after 7 innings	21-0
When LSU trails after 7 innings	1-5
When tied after 7 innings	2-1
When LSU leads after 8 innings	21-0
When LSU trails after 8 innings	0-5
When tied after 8 innings	3-1
Vs. Right-handed starting pitcher	14-4
Vs. Left-handed starting pitcher	10-2
Starting Pitchers	21-3
Relievers	3-3
When LSU has 10+ hits	20-3
When LSU has <6 hits	1-1
When opponent has 10+ hits	7-5
When opponent has <6 hits	7-0
When LSU has more hits	19-0
When LSU has fewer hits	3-6
Equal hits	2-0
When LSU hits 3 or more home runs	6-0
When LSU hits no home runs	6-3
When opponent hits 3+ home runs	0-1
When opponent hits no home runs	13-2
Games won on final at-bat	3
Games lost on final at-bat	2
Come-from-behind wins	10
Losses when LSU led previously	3
Blown saves	0
Longest game	3:27 (at Central Florida, 2/15)
Shortest game(9 or more innings)	2:11 (at Auburn, 4/3)



# Smoke Laval

HEAD COACH • THIRD YEAR

Raymond "Smoke" Laval enhanced his reputation as one of the country's top college baseball coaches, as, in just his second season at the helm of the LSU program, he guided the 2003 Tigers to the Southeastern Conference title -- LSU's first since 1997 -- and a berth in the College World Series.

Laval, the 2003 SEC Coach of the Year, directed LSU to a 45-22-1 overall record and a 20-9-1 conference mark, as the Tigers finished No. 5 in the final Baseball America rankings.

The magnificent '03 campaign augmented the success Laval enjoyed in his inaugural season as LSU's coach, as he led the 2002 Tigers to a 44-22 overall mark, an appearance in the NCAA Super Regional and a No. 11 final national ranking.

Laval, who served seven seasons (1994-2000) as the head coach at the University of Louisiana-Monroe, assumed control of the LSU program from Bertman, who led the Tigers to five NCAA championships and 11 College World Series appearances during an 18-year (1984-2001) tenure. Laval worked as Bertman's top assistant coach for 10 seasons (1984-93), helping lead LSU to its first two NCAA titles in 1991 and 1993. During Laval's 10 years as assistant coach, LSU posted a 483-182-1 record, won five SEC titles, appeared in six College World Series and captured two national championships.

Laval was known at LSU as one of the nation's best recruiters and brightest assistant coaches, as the Tigers reached the College World Series in only the third season (1986) of the Bertman-Laval regime. LSU followed the '86 CWS appearance with Omaha berths in 1987, 1989 and 1990 before the Tigers claimed the school's first baseball national title in 1991. After LSU captured its second NCAA crown in 1993, Laval departed Baton Rouge to become the head coach at Northeast Louisiana (now Louisiana-Monroe).

During his assistant coaching tenure at LSU, Laval -- who worked as the Tigers' primary recruiter - tutored 24 players who would eventually reach the major leagues. Some of the major leaguers with whom Laval worked include all-stars Albert Belle and Paul Byrd and first-round pick Todd Walker.

Laval compiled a 241-159 (.603) mark as the head coach at ULM, guiding the Indians to NCAA Regional appearances in 1995, 1999 and 2000.

Laval began his coaching career in 1977 as an assistant at Jacksonville University before moving to Wolfson High School in Jacksonville as a baseball and football coach. He served as a graduate assistant at LSU in 1979 under former Tiger head coach Jack Lamabe before working two years as an assistant at Gulf Coast Community College in Panama City, Fla.

Laval served as an assistant coach at Florida for two seasons (1982-83) before returning to LSU to work under Bertman.

Laval holds a bachelor's degree (1977) from Jacksonville in physical education and a master's degree (1979) from LSU in administration. The McDonald, Pa., native played two seasons at Gulf Coast Community College, where he lettered as a catcher. He completed his playing career at Jacksonville, where he led the ninth-ranked Dolphins in hitting at the 1976 NCAA South Regional.

Laval and his wife, Pam, are the parents of two children, Brandon and Jamie.

## Laval Year-By-Year

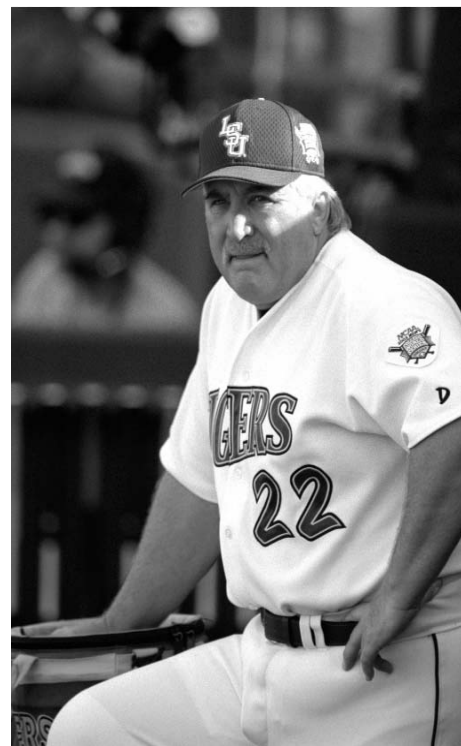
Year	W-L	School	Highlights
1994	20-33	UL-Monroe	Defeated Three NCAA Tournament Teams
1995	37-20	UL-Monroe	SLC Tournament Champions; NCAA Regional Participants
1996	41-19	UL-Monroe	School-Record 41 Wins; SLC Louisiana Division Champions
1997	33-21	UL-Monroe	Became Fourth Coach in ULM History To Record 100 Wins
1998	33-22	UL-Monroe	Led SLC In Hitting For Third Straight Season
1999	36-22	UL-Monroe	SLC Champions; NCAA Regional Participants
2000	41-22	UL-Monroe	SLC Champions; NCAA Regional Participants
2002	44-22	LSU	NCAA Regional Champions; NCAA Super Regional Participants
2003	45-22-1	LSU	SEC Champions; College World Series Participants
2004	24-6	LSU	

**Career Record (10th year):** 354-209-1

**LSU Record (3rd year):** 113-50-1

### COACHING HONORS

- 1995 Louisiana Sportswriters Association Coach of the Year
- 1999 Southland Conference Coach of the Year
- 2002 Louisiana Sportswriters Association Coach of the Year
- 2003 SEC Coach of the Year; Louisiana Sportswriters Association Coach of the Year



## The Laval File

**Full Name:** Raymond Peter Laval  
**Born:** December 20, 1955  
**Hometown:** McDonald, Pa.  
**Wife:** Pam Lewis of Reserve, La.  
**Children:** Jamie and Brandon

## Coaching Experience

1977	Assistant Coach	Jacksonville
1978	Assistant Coach	Wolfson HS (Jacksonville, Fla.)
1979	Graduate Assistant	LSU
1980-81	Assistant Coach	Gulf Coast CC
1982-83	Assistant Coach	Florida
1984-93	Assistant Coach	LSU
1994-2000	Head Coach	UL-Monroe
2001	Administrative Asst.	LSU
2002-	Head Coach	LSU

## Education

High School: South Fayette(McDonald, Pa.), 1973  
 College: Jacksonville, 1977 (physical education)  
 Masters: LSU, 1979 (administration)

## Playing Experience

1970-73: Catcher, South Fayette High School  
 1974-75: Catcher, Gulf Coast CC  
 1976-77: Catcher, Jacksonville University

## The Nickname "Smoke"

As a native of Western Pennsylvania, Raymond Peter Laval grew up as a Pittsburgh Pirates fan. He received the name "Smoke" in the late 1970s from his Gulf Coast Community College teammates, who derived the moniker from Smokey Burgess, a catcher for the Pirates in the 1960s.

# Media Services

## Interview Opportunities

### Head Coach Smoke Laval

Coach Laval is available for phone interviews on weekday mornings (9 a.m. -Noon) during the season. Please coordinate all requests for personal interviews with Coach Laval through his office. Appointments and interviews may be arranged through Virginia Robertson at (225) 578-4148. **Coach Laval will talk to reporters approximately 10 minutes after the end of a game in the LSU dugout.**

### Players

Media members are invited to attend LSU baseball practice sessions. Players are available for interviews before each practice at approximately 1 p.m. in Alex Box Stadium. Requests for live player interviews on the field prior to a game should be made through Bill Franques in the Sports Information Office.

**Post-game player interviews are conducted in front of the LSU dugout at the conclusion of a brief team meeting on the field.**

### Mailing Address

LSU Sports Information  
P.O. Box 25095  
Baton Rouge, LA 70894-5095

### Overnight Mail Address

Room 501, LSU Athletics Admin. Bldg.  
N. Stadium Dr. at Nicholson Dr.  
Baton Rouge, LA 70894-5095

### Phone Directory

Press Box: 225-578-4149  
Sports Information: 225-578-8226  
Fax: 225-578-1861  
Baseball Office: 225-578-4148  
Fax: 225-578-4066

### Baseball Contact E-mail Address

wfranqu@lsu.edu

## Who to Contact

### Sports Information Office

(225) 578-8226

### Baseball Contact

Bill Franques - wfranqu@lsu.edu

### Asst. Contact

Bill Martin - wmarti4@lsu.edu

### LSU Television

(225) 578-1797

### Asst. AD/Television

Kevin Wagner - jwagne2@lsu.edu

### Manager/Television

John Schiebe - jschiebe@lsu.edu

### LSU Radio

(225) 578-1882

### Asst. AD/Radio

Jim Hawthorne - lsuradio@lsu.edu

## On the Internet

### www.LSUsports.net

The Official Website of LSU Athletics is home to all the baseball information you need.

Schedules, results, rosters, bios, statistics and game notes can be found and are always up to date.

### http://media.lsusports.net

Media can now access images for all LSU athletic teams, including action shots, heads shots, logos, etc. To gain access to the high-resolution pictures, email Bill Franques. You will be assigned a login and password that will enable you to retrieve pictures. This service is for the media use only.

## LSU Electronic Media

### Radio

The LSU Sports Radio Network will distribute all LSU Baseball games by satellite to 25 radio affiliates. WDGL-FM (98.1) Radio in Baton Rouge serves as the flagship station for the LSU Sports Network. Jim Hawthorne, the "Voice of the Tigers" for all LSU sports, is in his 21st season of calling baseball play-by-play action. He will be joined on the broadcasts by Charles Hanagriff and LSU baseball publicist Bill Franques. Selected LSU Sports Network stations will also air "Tiger Sportsline with Smoke Laval" each Monday from 7-8 p.m., beginning on March 29. The show airs live from Superior Grill on Government Street in Baton Rouge.

### Television

Inside LSU Baseball is a weekly program featuring LSU head coach Smoke Laval. The first installment of the 2004 season will air March 21, and the show will air weekly through May 23. The show features game highlights, player profiles and in-depth stories on college baseball's No. 1 program. Inside LSU Baseball is produced by the LSU Electronic Media Department – Kevin Wagner, Executive Producer; John Schiebe, Associate Producer. Inside LSU Baseball Affiliates include WBRZ Channel 2 in Baton Rouge and Cox Sports Television throughout the state of Louisiana.

Bill Franques  
wfranqu@lsu.edu

## Week 9: April 5-11

Bill Martin  
wmarti4@lsu.edu

MONDAY	5	TUESDAY	6	WEDNESDAY	7	THURSDAY	8	FRIDAY	9	SATURDAY	10	SUNDAY	11
		<b>vs. Tulane</b> L, 0-1 Alex Box Stadium Baton Rouge, La.  Radio: LSU Sports Network  TV: None						<b>vs. Arkansas</b> 6:30 p.m. Alex Box Stadium Baton Rouge, La.  Radio: LSU Sports Network  TV: None		<b>vs. Arkansas</b> 2 p.m. Alex Box Stadium Baton Rouge, La.  Radio: LSU Sports Network  TV: Fox Sports Net		<b>vs. Arkansas</b> 1 p.m. Alex Box Stadium Baton Rouge, La.  Radio: LSU Sports Network  TV: Cox Sports	

LSU VS. ARKANSAS

2004 LSU Baseball  
Overall Statistics for LSU (as of Apr 07, 2004)  
(All games Sorted by Batting avg)

Record: 24-6 Home: 14-3 Away: 10-3 SEC: 6-3

Player	AVG	GP-GS	AB	R	H	2B	3B	HR	RBI	TB	SLG%	BB	HBP	SO	GDP	OB%	SF	SH	SB-ATT	PO	A	E	FLD%
1 J.C. Holt.....	.393	30-30	122	34	48	11	2	4	22	75	.615	12	3	20	1	.457	1	4	7-9	65	0	0	1.000
16 Jon Zeringue.....	.372	30-30	113	30	42	14	1	8	28	82	.726	12	2	19	0	.434	2	0	1-2	54	1	0	1.000
14 Matt Liuzza.....	.321	28-28	109	19	35	7	0	6	23	60	.550	8	0	17	2	.361	2	3	0-0	169	19	0	1.000
3 Blake Gill.....	.319	30-29	116	22	37	6	2	0	16	47	.405	13	0	10	2	.382	2	0	2-2	57	77	6	.957
43 Nick Stavinoaha...	.319	29-29	113	19	36	6	0	4	21	54	.478	5	3	15	2	.352	4	0	3-3	0	0	0	.000
12 Ryan Patterson...	.314	30-30	137	31	43	12	0	4	27	67	.489	5	2	22	3	.345	1	0	2-2	56	4	1	.984
21 Clay Harris.....	.301	30-30	113	25	34	3	3	4	21	55	.487	19	2	13	2	.401	3	0	0-0	168	36	4	.981
-----																							
9 Dustin Weaver....	.474	11-3	19	4	9	1	0	1	8	13	.684	1	1	1	0	.500	1	0	0-0	36	2	0	1.000
10 Ty Jensen.....	.400	10-0	5	1	2	0	0	0	3	2	.400	0	1	1	0	.500	0	0	0-0	8	0	0	1.000
25 Will Harris.....	.396	20-14	48	12	19	2	0	2	14	27	.563	7	1	7	1	.482	0	0	0-1	115	6	1	.992
2 Derek Hebert.....	.286	20-14	63	15	18	5	0	1	5	26	.413	3	0	14	3	.313	1	0	0-0	28	50	4	.951
34 Matt Horwath.....	.280	16-16	50	10	14	4	0	1	9	21	.420	10	2	15	0	.419	0	2	0-0	16	47	4	.940
7 Ivan Naccarata...	.261	25-16	69	17	18	2	0	4	19	32	.464	12	1	13	2	.369	2	0	1-2	11	36	4	.922
30 Bobby DiLiberto..	.250	9-1	12	2	3	0	0	1	4	6	.500	0	0	1	1	.250	0	0	0-0	3	7	1	.909
38 Brad Bass.....	.250	4-0	4	0	1	0	0	0	2	1	.250	0	0	0	1	.250	0	0	0-0	3	0	0	1.000
32 Rhett Buteau.....	.000	8-0	3	2	0	0	0	0	1	0	.000	4	0	1	0	.571	0	0	0-0	1	0	0	1.000
52 Will Davis.....	.000	1-0	1	0	0	0	0	0	0	0	.000	0	0	1	0	.000	0	0	0-0	0	0	0	.000
-----																							
Totals.....	.327	30-30	1097	243	359	73	8	40	223	568	.518	111	18	170	20	.392	19	9	16-21	807	327	30	.974
Opponents.....	.245	30-30	1024	99	251	48	5	17	88	360	.352	84	17	210	27	.312	4	9	15-23	771	286	48	.957

LOB - Team (241), Opp (232). DPs turned - Team (31), Opp (26). CI - Team (0), Opp (1). IBB - Team (0), Opp (2). Picked off - Patterson 2, Gill 1, Holt 1.

(All games Sorted by Earned run avg)

Player	ERA	W-L	APP	GS	CG	SHO/CBO	SV	IP	H	R	ER	BB	SO	2B	3B	HR	AB	B/Avg	WP	HBP	BK	SFA	SHA
13 Clay Dirks.....	1.90	6-0	8	7	2	1/1	1	47.1	30	11	10	8	44	13	0	2	172	.174	1	5	1	0	1
35 Justin Meier.....	2.92	4-1	8	8	0	0/0	0	52.1	57	23	17	16	42	11	1	3	210	.271	4	5	0	1	2
46 Lane Mestepey....	3.03	3-1	9	6	0	0/0	0	35.2	42	15	12	14	18	3	0	4	138	.304	2	1	0	0	2
-----																							
27 Greg Smith.....	0.48	1-0	12	0	0	0/1	1	18.2	11	1	1	5	23	3	0	1	66	.167	1	1	0	0	0
29 Jordan Faircloth.	2.11	0-3	11	0	0	0/0	1	21.1	18	5	5	6	15	2	0	1	71	.254	0	3	0	0	2
33 Jason Determann..	2.73	2-1	10	3	0	0/1	1	26.1	23	8	8	2	20	3	1	2	98	.235	3	0	3	2	0
25 Will Harris.....	3.00	0-0	3	0	0	0/0	0	3.0	4	1	1	3	2	1	0	0	13	.308	0	1	0	0	0
41 Nate Bumstead....	3.72	5-0	6	5	0	0/0	0	38.2	40	17	16	11	22	7	1	4	153	.261	3	1	1	0	0
28 Michael Bonura...	4.35	3-0	8	1	0	0/1	0	20.2	20	13	10	17	19	2	1	0	79	.253	1	0	1	1	2
6 Collin Smith.....	9.00	0-0	4	0	0	0/0	0	5.0	6	5	5	2	5	3	1	0	24	.250	1	0	0	0	0
-----																							
Totals.....	2.81	24-6	30	30	2	2/1	4	269.0	251	99	84	84	210	48	5	17	1024	.245	16	17	6	4	9
Opponents.....	7.14	6-24	30	30	0	1/1	2	257.0	359	243	204	111	170	73	8	40	1097	.327	26	18	4	19	9

PB - Team (5), Liuzza 4, Weaver 1, Opp (6). Pickoffs - Team (4), Mestepey 2, Faircloth 1, Determann 1, Opp (4). SBA/ATT - Liuzza (13-21), Meier (2-5), Faircloth (2-4), Bumstead (3-3), Mestepey (3-3), Weaver (2-2), Bonura (1-2), Determann (1-2), Dirks (1-2), Smith, C. (1-1), Harris, W. (1-1).

## 2004 LSU Baseball

Overall Statistics for LSU (as of Apr 07, 2004)

(All games Sorted by Fielding pct)

Player	C	PO	A	E	FLD%	DPs	SBA	CSB	SBA%	PB	CI
14 Matt Liuzza.....	188	169	19	0	1.000	2	13	8	.619	4	0
1 J.C. Holt.....	65	65	0	0	1.000	0	0	0	---	0	0
16 Jon Zeringue.....	55	54	1	0	1.000	0	0	0	---	0	0
9 Dustin Weaver....	38	36	2	0	1.000	0	2	0	1.000	1	0
29 Jordan Faircloth.	12	3	9	0	1.000	1	2	2	.500	0	0
41 Nate Bumstead....	10	6	4	0	1.000	0	3	0	1.000	0	0
10 Ty Jensen.....	8	8	0	0	1.000	0	0	0	---	0	0
27 Greg Smith.....	5	1	4	0	1.000	1	0	0	---	0	0
33 Jason Determann..	5	0	5	0	1.000	0	1	1	.500	0	0
38 Brad Bass.....	3	3	0	0	1.000	0	0	0	---	0	0
32 Rhett Buteau.....	1	1	0	0	1.000	0	0	0	---	0	0
25 Will Harris.....	122	115	6	1	.992	16	1	0	1.000	0	0
12 Ryan Patterson...	61	56	4	1	.984	1	0	0	---	0	0
21 Clay Harris.....	208	168	36	4	.981	18	0	0	---	0	0
3 Blake Gill.....	140	57	77	6	.957	22	0	0	---	0	0
2 Derek Hebert.....	82	28	50	4	.951	8	0	0	---	0	0
34 Matt Horwath.....	67	16	47	4	.940	8	0	0	---	0	0
7 Ivan Naccarata...	51	11	36	4	.922	2	0	0	---	0	0
30 Bobby DiLiberto..	11	3	7	1	.909	0	0	0	---	0	0
46 Lane Mestepey....	11	3	7	1	.909	0	3	0	1.000	0	0
13 Clay Dirks.....	6	0	5	1	.833	0	1	1	.500	0	0
35 Justin Meier.....	11	2	7	2	.818	0	2	3	.400	0	0
28 Michael Bonura...	4	2	1	1	.750	0	1	1	.500	0	0
52 Will Davis.....	0	0	0	0	.000	0	0	0	---	0	0
6 Collin Smith.....	0	0	0	0	.000	0	1	0	1.000	0	0
43 Nick Stavinoha...	0	0	0	0	.000	0	0	0	---	0	0
Totals.....	1164	807	327	30	.974	31	15	8	.652	5	0
Opponents.....	1105	771	286	48	.957	26	16	5	.762	6	1

2004 LSU Baseball  
 Game Results for LSU (as of Apr 07, 2004)  
 (All games)

Game date	Opposing team	Score	r	h	e/	r	h	e	Inns	Overall	SEC	Pitcher of record	Attend	Time	
-----	-----	----	-----/-----			----	-----	-----	-----	-----	-----	-----	-----	-----	-----
Feb 13, 2004	at UCF	W 4-3	4	7	0/	3	7	3	(10)	1- 0- 0	0- 0- 0	Determann (W 1-0)	1922	3:15	
Feb 14, 2004	at UCF	W 17-4	17	19	1/	4	7	2	9	2- 0- 0	0- 0- 0	Mestepey (W 1-0)	1642	3:20	
Feb 15, 2004	at UCF	5-6 L	5	8	1/	6	10	1	(10)	2- 1- 0	0- 0- 0	Faircloth (L 0-1)	1575	3:27	
Feb 17, 2004	Louisiana-Monroe	W 7-1	7	11	1/	1	6	2	9	3- 1- 0	0- 0- 0	Bonura (W 1-0)	7643	2:46	
Feb 20, 2004	Jacksonville State	W 6-1	6	10	0/	1	6	4	9	4- 1- 0	0- 0- 0	Meier (W 1-0)	7448	2:41	
Feb 21, 2004	Jacksonville State	W 14-2	14	14	1/	2	8	3	9	5- 1- 0	0- 0- 0	Mestepey (W 2-0)	7528	2:44	
Feb 22, 2004	Jacksonville State	W 19-1	19	20	3/	1	4	2	7	6- 1- 0	0- 0- 0	Dirks (W 1-0)	7494	2:30	
Feb 27, 2004	Texas State	W 10-1	10	15	2/	1	6	2	9	7- 1- 0	0- 0- 0	Meier (W 2-0)	7748	2:35	
Feb 28, 2004	Texas State	W 2-1	2	6	1/	1	8	1	9	8- 1- 0	0- 0- 0	Determann (W 2-0)	8360	2:18	
Feb 29, 2004	Texas State	W 13-2	13	16	0/	2	7	2	9	9- 1- 0	0- 0- 0	Bumstead (W 1-0)	8103	2:32	
Mar 02, 2004	at #8 Tulane	W 6-0	6	14	0/	0	4	0	9	10- 1- 0	0- 0- 0	Dirks (W 2-0)	10916	2:45	
Mar 05, 2004	Houston	W 9-3	9	14	0/	3	12	3	9	11- 1- 0	0- 0- 0	Meier (W 3-0)	7698	3:23	
Mar 06, 2004	Houston	5-10 L	5	13	4/	10	14	0	9	11- 2- 0	0- 0- 0	Mestepey (L 2-1)	8683	3:01	
Mar 07, 2004	Houston	W 8-2	8	15	0/	2	10	0	9	12- 2- 0	0- 0- 0	Bumstead (W 2-0)	8177	2:33	
Mar 09, 2004	at Louisiana-Monroe	W 6-1	6	12	0/	1	4	2	9	13- 2- 0	0- 0- 0	Dirks (W 3-0)	3651	2:14	
Mar 12, 2004	Southeastern La.	W 7-1	7	12	1/	1	6	1	9	14- 2- 0	0- 0- 0	Meier (W 4-0)	8308	2:20	
Mar 13, 2004	Southeastern La.	W 5-1	5	11	1/	1	12	3	9	15- 2- 0	0- 0- 0	Mestepey (W 3-1)	7978	2:46	
Mar 16, 2004	New Orleans	W 14-0	14	12	0/	0	3	2	7	16- 2- 0	0- 0- 0	Dirks (W 4-0)	7798	2:09	
*Mar 19, 2004	at #3 South Carolina	W 6-3	6	12	2/	3	8	0	(11)	17- 2- 0	1- 0- 0	Smith, G. (W 1-0)	5481	2:56	
*Mar 20, 2004	at #3 South Carolina	5-12 L	5	10	1/	12	11	2	9	17- 3- 0	1- 1- 0	Faircloth (L 0-2)	5908	2:25	
*Mar 21, 2004	at #3 South Carolina	W 12-7	12	18	1/	7	9	0	9	18- 3- 0	2- 1- 0	Bumstead (W 3-0)	5982	2:49	
Mar 23, 2004	at Centenary	W 9-3	9	12	0/	3	11	2	9	19- 3- 0	2- 1- 0	Bonura (W 2-0)	4178	2:40	
*Mar 26, 2004	#24 Miss. State	3-7 L	3	6	1/	7	14	1	9	19- 4- 0	2- 2- 0	Meier (L 4-1)	8521	2:42	
*Mar 27, 2004	#24 Miss. State	W 11-6	11	13	2/	6	9	1	9	20- 4- 0	3- 2- 0	Dirks (W 5-0)	8289	2:32	
*Mar 28, 2004	#24 Miss. State	W 14-3	14	16	3/	3	11	1	9	21- 4- 0	4- 2- 0	Bumstead (W 4-0)	8040	2:20	
Mar 30, 2004	at New Orleans	W 12-5	12	15	0/	5	10	2	9	22- 4- 0	4- 2- 0	Bonura (W 3-0)	2655	2:55	
*Apr 02, 2004	at #11 Auburn	6-7 L	6	11	3/	7	17	0	(10)	22- 5- 0	4- 3- 0	Faircloth (L 0-3)	3631	3:11	
*Apr 03, 2004	at #11 Auburn	W 5-3	5	9	0/	3	5	3	9	23- 5- 0	5- 3- 0	Dirks (W 6-0)	3981	2:11	
*Apr 04, 2004	at #11 Auburn	W 3-2	3	4	0/	2	5	3	9	24- 5- 0	6- 3- 0	Bumstead (W 5-0)	3881	2:39	
Apr 06, 2004	#12 Tulane	0-1 L	0	4	1/	1	7	0	9	24- 6- 0	6- 3- 0	Determann (L 2-1)	7840	2:32	

( ) extra inning game

2004 LSU Baseball  
 BATTING ANALYSIS for LSU (as of Apr 07, 2004)  
 (All games Sorted by Player Name)

Player	vs Left			vs Right			w/Runners On			w/Bases Empty			w/Bases Loaded			Rch as Leadoff			Fly	Gnd	Fly/
	H	AB	Avg	H	AB	Avg	H	AB	Avg	H	AB	Avg	H	AB	Avg	Rch	Ops	Pct	Out	Out	Gnd
38 Brad Bass.....	0	2	.000	1	2	.500	1	3	.333	0	1	.000	1	1	1.000	0	1	.000	2	1	2.0
32 Rhett Buteau.....	0	1	.000	0	2	.000	0	2	.000	0	1	.000	0	0	---	0	1	.000	1	0	99.9
52 Will Davis.....	0	0	---	0	1	.000	0	0	---	0	1	.000	0	0	---	0	0	---	0	0	0.0
30 Bobby DiLiberto..	2	7	.286	1	5	.200	3	11	.273	0	1	.000	0	0	---	0	1	.000	4	4	1.0
3 Blake Gill.....	7	33	.212	30	83	.361	22	52	.423	15	64	.234	0	2	.000	9	26	.346	31	35	0.9
21 Clay Harris.....	13	42	.310	21	71	.296	20	61	.328	14	52	.269	0	2	.000	10	26	.385	36	32	1.1
25 Will Harris.....	15	31	.484	4	17	.235	12	27	.444	7	21	.333	2	2	1.000	10	13	.769	8	12	0.7
2 Derek Hebert.....	6	26	.231	12	37	.324	6	36	.167	12	27	.444	0	3	.000	5	10	.500	18	11	1.6
1 J.C. Holt.....	16	46	.348	32	76	.421	25	58	.431	23	64	.359	2	2	1.000	24	48	.500	23	32	0.7
34 Matt Horwath.....	4	18	.222	10	32	.313	9	25	.360	5	25	.200	0	1	.000	8	15	.533	12	8	1.5
10 Ty Jensen.....	0	2	.000	2	3	.667	2	3	.667	0	2	.000	1	1	1.000	0	1	.000	2	0	99.9
14 Matt Liuzza.....	14	37	.378	21	72	.292	23	58	.397	12	51	.235	0	2	.000	8	22	.364	26	35	0.7
7 Ivan Naccarata...	2	9	.222	16	60	.267	11	41	.268	7	28	.250	1	2	.500	4	13	.308	19	19	1.0
12 Ryan Patterson...	16	46	.348	27	91	.297	22	75	.293	21	62	.339	1	3	.333	14	28	.500	43	27	1.6
43 Nick Stavinoha...	11	36	.306	25	77	.325	19	51	.373	17	62	.274	0	1	.000	4	22	.182	40	22	1.8
9 Dustin Weaver....	4	7	.571	5	12	.417	6	11	.545	3	8	.375	0	1	.000	1	4	.250	8	1	8.0
16 Jon Zeringue.....	12	35	.343	30	78	.385	21	57	.368	21	56	.375	2	4	.500	13	26	.500	30	21	1.4
Totals.....	122	378	.323	237	719	.330	202	571	.354	157	526	.298	10	27	.370	110	257	.428	303	260	1.2
Opponents.....	106	474	.224	145	550	.264	108	454	.238	143	570	.251	2	29	.069	86	270	.319	266	286	0.9

Player	Pinch Hitting			With Runners In Scoring Pos			w/Rnr on 3rd And LT 2 Out			With 2 Out			2- Success Advancing Rnrs			#Rnrs Adv Rnrs		Rch	Rch		
	H	AB	Avg	H	AB	Avg	RBI	Ops	Pct	H	AB	Avg	RBI	Adv	Ops	Pct	w/Out	LOB	Err	FC	KL
38 Brad Bass.....	1	4	.250	1	2	.500	1	1	1.000	0	1	.000	0	1	3	.333	0	2	0	0	0
32 Rhett Buteau.....	0	3	.000	0	2	.000	1	1	1.000	0	0	---	0	4	4	1.000	1	0	1	0	1
52 Will Davis.....	0	1	.000	0	0	---	0	0	---	0	1	.000	0	0	0	---	0	0	0	0	0
30 Bobby DiLiberto..	1	7	.143	2	7	.286	0	1	.000	1	3	.333	1	5	12	.417	1	4	0	1	0
3 Blake Gill.....	0	1	.000	16	30	.533	3	4	.750	8	37	.216	4	35	57	.614	7	16	3	3	4
21 Clay Harris.....	0	0	---	12	41	.293	6	7	.857	16	41	.390	12	40	72	.556	16	25	0	3	5
25 Will Harris.....	2	3	.667	8	19	.421	2	2	1.000	7	16	.438	9	16	28	.571	5	12	2	1	2
2 Derek Hebert.....	2	3	.667	1	24	.042	3	9	.333	7	26	.269	2	15	38	.395	3	18	3	2	5
1 J.C. Holt.....	0	0	---	13	30	.433	4	5	.800	16	37	.432	12	41	69	.594	9	18	4	5	4
34 Matt Horwath.....	0	0	---	8	19	.421	2	3	.667	7	18	.389	4	16	30	.533	4	7	3	2	6
10 Ty Jensen.....	2	4	.500	2	3	.667	1	1	1.000	0	2	.000	0	3	4	.750	0	2	0	0	1
14 Matt Liuzza.....	0	0	---	11	39	.282	6	11	.545	8	30	.267	7	38	69	.551	10	23	1	3	6
7 Ivan Naccarata...	3	6	.500	7	26	.269	7	9	.778	3	23	.130	3	25	49	.510	9	25	1	4	5
12 Ryan Patterson...	0	0	---	16	49	.327	3	7	.429	8	38	.211	7	32	76	.421	6	39	1	7	3
43 Nick Stavinoha...	0	0	---	10	35	.286	10	15	.667	13	38	.342	6	30	58	.517	7	19	4	4	3
9 Dustin Weaver....	3	4	.750	5	8	.625	2	2	1.000	7	11	.636	6	11	14	.786	2	3	0	1	1
16 Jon Zeringue.....	0	0	---	13	34	.382	4	6	.667	11	37	.297	9	32	62	.516	9	26	3	6	6
Totals.....	14	36	.389	125	368	.340	55	84	.655	112	359	.312	82	344	645	.533	89	241	26	42	52
Opponents.....	7	32	.219	54	267	.202	18	39	.462	89	347	.256	39	203	493	.412	54	232	22	29	66

Success Advancing Runners = percentage of times the batter advanced at least one runner during a plate appearance

#Rnrs Adv w/Out = TOTAL number of runners advanced when the player made an out

2004 LSU Baseball  
 PITCHING ANALYSIS for LSU (as of Apr 07, 2004)  
 (All games Sorted by Player Name)

Player	vs Left			vs Right			w/Runners On			w/Bases Empty			Rch by Leadoff			with 2 Outs			Fly	Gnd	Fly/
	H	AB	Avg	H	AB	Avg	H	AB	Avg	H	AB	Avg	Rch	Ops	Pct	H	AB	Avg	Out	Out	Gnd
28 Michael Bonura...	11	27	.407	9	52	.173	10	45	.222	10	34	.294	11	22	.500	4	24	.167	13	27	0.5
41 Nate Bumstead....	19	79	.241	21	74	.284	20	55	.364	20	98	.204	9	42	.214	11	47	.234	40	49	0.8
33 Jason Determann..	9	27	.333	14	71	.197	8	38	.211	15	60	.250	7	24	.292	7	35	.200	37	20	1.9
13 Clay Dirks.....	11	61	.180	19	111	.171	8	56	.143	22	116	.190	9	47	.191	13	60	.217	56	39	1.4
29 Jordan Faircloth.	9	26	.346	9	45	.200	8	35	.229	10	36	.278	8	17	.471	8	28	.286	11	28	0.4
25 Will Harris.....	1	3	.333	3	10	.300	3	9	.333	1	4	.250	1	3	.333	2	5	.400	3	4	0.8
35 Justin Meier.....	31	91	.341	26	119	.218	27	105	.257	30	105	.286	19	56	.339	18	68	.265	64	44	1.5
46 Lane Mestepey....	13	34	.382	29	104	.279	15	69	.217	27	69	.391	20	37	.541	19	50	.380	26	49	0.5
6 Collin Smith.....	1	7	.143	5	17	.294	4	14	.286	2	10	.200	2	5	.400	4	9	.444	7	4	1.8
27 Greg Smith.....	4	20	.200	7	46	.152	5	28	.179	6	38	.158	0	17	.000	3	21	.143	9	22	0.4
Totals.....	109	375	.291	142	649	.219	108	454	.238	143	570	.251	86	270	.319	89	347	.256	266	286	0.9
Opponents.....	121	373	.324	238	724	.329	202	571	.354	157	526	.298	110	257	.428	112	359	.312	303	260	1.2

Player	App-GS	IP/		*H/g	*R/g	*ER/g	*BB/g	*SO/g	K/BB				*GO/g	Stolen Bases			
		App	*H/g						*R/g	*ER/g	*BB/g	*SO/g		Ratio	*2B/g	*3B/g	*HR/g
28 Michael Bonura...	8-1	2.58	8.71	5.66	4.35	7.40	8.27	1.1	0.87	0.44	0.00	5.66	11.76	43.11	1	2	.500
41 Nate Bumstead....	6-5	6.44	9.31	3.96	3.72	2.56	5.12	2.0	1.63	0.23	0.93	9.31	11.41	38.41	3	3	1.000
33 Jason Determann..	10-3	2.63	7.86	2.73	2.73	0.68	6.84	10.0	1.03	0.34	0.68	12.65	6.84	34.86	1	2	.500
13 Clay Dirks.....	8-7	5.92	5.70	2.09	1.90	1.52	8.37	5.5	2.47	0.00	0.38	10.65	7.42	35.37	1	2	.500
29 Jordan Faircloth.	11-0	1.94	7.59	2.11	2.11	2.53	6.33	2.5	0.84	0.00	0.42	4.64	11.81	34.59	2	4	.500
25 Will Harris.....	3-0	1.00	12.00	3.00	3.00	9.00	6.00	0.7	3.00	0.00	0.00	9.00	12.00	51.00	1	1	1.000
35 Justin Meier.....	8-8	6.54	9.80	3.96	2.92	2.75	7.22	2.6	1.89	0.17	0.52	11.01	7.57	40.24	2	5	.400
46 Lane Mestepey....	9-6	3.96	10.60	3.79	3.03	3.53	4.54	1.3	0.76	0.00	1.01	6.56	12.36	39.11	3	3	1.000
6 Collin Smith.....	4-0	1.25	10.80	9.00	9.00	3.60	9.00	2.5	5.40	1.80	0.00	12.60	7.20	46.80	1	1	1.000
27 Greg Smith.....	12-0	1.56	5.30	0.48	0.48	2.41	11.09	4.6	1.45	0.00	0.48	4.34	10.61	34.71	0	0	---
Totals.....	30-30	8.97	8.40	3.31	2.81	2.81	7.03	2.5	1.61	0.17	0.57	8.90	9.57	38.07	15	23	.762
Opponents.....	30-30	8.57	12.57	8.51	7.14	3.89	5.95	1.5	2.56	0.28	1.40	10.61	9.11	43.95	16	21	.652

\* = average based on 9-inning game

2004 LSU Baseball  
 Games Summary for LSU (as of Apr 07, 2004)  
 (All games)

Inning-by-inning summary:

	1	2	3	4	5	6	7	8	9	EX	Total
LSU	26	14	30	44	31	20	42	18	14	4	243
Opponents	7	7	17	12	13	9	15	7	10	2	99

Win-loss summary:

	W	L	T	Pct
Total	24	6	0	.800
Conference	6	3	0	.667
Non-Conf	18	3	0	.857
Home	14	3	0	.824
Away	10	3	0	.769
Neutral	0	0	0	.000
Day	12	3	0	.800
Night	12	3	0	.800
vs Left	10	2	0	.833
vs Right	14	4	0	.778
1-Run games	3	3	0	.500
2-Run games	1	0	0	1.000
5+Run games	18	2	0	.900
Extra inns	2	2	0	.500
Shutouts	2	1	0	.667

General summary:

Current losing streak : 1  
 Longest winning streak : 9  
 Longest losing streak : 1

Home attendance : 135656 ( 17 dates avg = 7979 )  
 Away attendance : 55403 ( 13 dates avg = 4261 )  
 Total attendance: 191059 ( 30 dates avg = 6368 )



2004 LSU Baseball  
Team Game-by-Game for LSU (as of Apr 07, 2004)  
Batting (All games)

Date	Opponent	AB	R	H	RBI	2B	3B	HR	BB	IBB	SB	CS	HBP	SAC	SF	GDP	K	PO	A	E	Avg
Feb 13, 2004	at UCF	37	4	7	3	1	0	2	6	0	0	2	0	0	0	0	8	30	11	0	.189
Feb 14, 2004	at UCF	45	17	19	16	1	0	5	9	0	1	0	2	1	0	0	8	27	16	1	.317
Feb 15, 2004	at UCF	38	5	8	5	1	1	0	5	0	0	0	2	0	0	0	9	28	12	1	.283
Feb 17, 2004	Louisiana-Monroe	35	7	11	6	4	1	0	6	0	0	0	1	0	1	0	4	27	11	1	.290
Feb 20, 2004	Jacksonville State	37	6	10	5	0	0	1	4	0	2	0	0	0	0	0	13	27	8	0	.286
Feb 21, 2004	Jacksonville State	36	14	14	12	2	1	0	5	0	0	0	1	0	0	2	2	27	15	1	.303
Feb 22, 2004	Jacksonville State	39	19	20	17	4	0	0	4	0	1	0	1	0	0	0	6	21	6	3	.333
Feb 27, 2004	Texas State	40	10	15	9	4	0	3	0	0	0	0	1	0	0	0	6	27	7	2	.339
Feb 28, 2004	Texas State	29	2	6	2	2	0	1	1	0	0	0	0	0	0	2	2	27	16	1	.327
Feb 29, 2004	Texas State	36	13	16	12	3	0	1	5	0	1	0	1	1	1	3	3	27	10	0	.339
Mar 02, 2004	at Tulane	41	6	14	6	1	0	1	1	0	1	0	0	0	0	0	7	27	11	0	.339
Mar 05, 2004	Houston	36	9	14	8	2	0	0	7	0	0	0	0	0	2	1	2	27	15	0	.343
Mar 06, 2004	Houston	38	5	13	5	3	0	0	3	0	0	0	0	0	0	2	6	27	8	4	.343
Mar 07, 2004	Houston	37	8	15	6	3	1	1	4	0	1	0	0	0	0	2	2	27	8	0	.347
Mar 09, 2004	at Louisiana-Monroe	38	6	12	5	5	1	0	0	0	0	0	0	1	0	0	9	27	7	0	.345
Mar 12, 2004	Southeastern La.	35	7	12	7	1	1	2	2	0	0	0	0	0	2	0	2	27	9	1	.345
Mar 13, 2004	Southeastern La.	36	5	11	5	3	0	1	4	0	2	1	0	0	0	0	8	27	13	1	.343
Mar 16, 2004	New Orleans	28	14	12	14	4	2	1	7	0	0	0	0	0	3	0	1	21	4	0	.346
Mar 19, 2004	at *South Carolina	42	6	12	6	2	0	1	2	0	0	0	2	2	1	0	11	33	8	2	.343
Mar 20, 2004	at *South Carolina	34	5	10	4	3	0	2	1	0	0	0	0	0	1	1	4	24	16	1	.341
Mar 21, 2004	at *South Carolina	43	12	18	12	4	0	4	5	0	0	0	0	0	1	1	8	27	8	1	.345
Mar 23, 2004	at Centenary	38	9	12	8	5	0	2	1	0	1	0	1	1	1	0	7	27	13	0	.344
Mar 26, 2004	*Miss. State	32	3	6	3	1	0	1	5	0	0	0	0	0	1	1	8	27	16	1	.338
Mar 27, 2004	*Miss. State	35	11	13	11	3	0	3	3	0	2	0	1	0	0	2	2	27	6	2	.339
Mar 28, 2004	*Miss. State	38	14	16	14	2	0	2	4	0	0	0	0	0	2	0	0	27	14	3	.342
Mar 30, 2004	at New Orleans	40	12	15	9	2	0	3	2	0	0	1	2	0	1	0	9	27	10	0	.344
Apr 02, 2004	at *Auburn	39	6	11	6	3	0	1	4	0	1	0	1	1	1	0	11	29	11	3	.341
Apr 03, 2004	at *Auburn	36	5	9	5	2	0	2	1	0	0	0	0	0	1	1	4	27	12	0	.338
Apr 04, 2004	at *Auburn	29	3	4	2	1	0	0	8	0	3	1	0	1	0	2	4	27	14	0	.333
Apr 06, 2004	Tulane	30	0	4	0	1	0	0	2	0	0	0	2	1	0	0	4	27	12	1	.327
Totals		1097	243	359	223	73	8	40	111	0	16	5	18	9	19	20	170	807	327	30	.327

2004 LSU Baseball  
 Team Game-by-Game for LSU (as of Apr 07, 2004)  
 Pitching (All games)

Date	Opponent	IP	H	R	ER	BB	SO	2B	3B	HR	WP	BK	HBP	DP	IBB	Score	W-L	SV	ERA
Feb 13, 2004	at UCF	10.0	7	3	3	3	7	1	0	1	0	1	0	0	0	4-3	1-0	0	2.70
Feb 14, 2004	at UCF	9.0	7	4	3	5	5	0	1	0	1	0	1	1	0	17-4	2-0	0	2.84
Feb 15, 2004	at UCF	9.1	10	6	6	8	8	5	0	1	1	1	2	0	2	5-6	2-1	0	3.81
Feb 17, 2004	Louisiana-Monroe	9.0	6	1	1	6	7	1	0	0	0	1	1	0	0	7-1	3-1	0	3.13
Feb 20, 2004	Jacksonville State	9.0	6	1	1	1	11	0	0	0	0	0	0	0	0	6-1	4-1	1	2.72
Feb 21, 2004	Jacksonville State	9.0	8	2	2	2	6	3	0	1	0	0	0	2	0	14-2	5-1	1	2.60
Feb 22, 2004	Jacksonville State	7.0	4	1	0	0	7	2	0	0	0	1	0	0	0	19-1	6-1	1	2.31
Feb 27, 2004	Texas State	9.0	6	1	1	3	4	1	0	0	0	0	1	1	0	10-1	7-1	1	2.14
Feb 28, 2004	Texas State	9.0	8	1	1	2	5	0	0	0	0	0	0	1	0	2-1	8-1	1	2.02
Feb 29, 2004	Texas State	9.0	7	2	2	2	6	0	0	1	1	0	1	0	0	13-2	9-1	1	2.01
Mar 02, 2004	at Tulane	9.0	4	0	0	1	7	1	0	0	1	0	0	1	0	6-0	10-1	1	1.83
Mar 05, 2004	Houston	9.0	12	3	3	3	4	2	0	0	2	0	1	1	0	9-3	11-1	1	1.93
Mar 06, 2004	Houston	9.0	14	10	5	4	11	1	0	3	1	0	1	0	0	5-10	11-2	1	2.17
Mar 07, 2004	Houston	9.0	10	2	2	2	7	1	0	0	0	0	0	1	0	8-2	12-2	1	2.15
Mar 09, 2004	at Louisiana-Monroe	9.0	4	1	1	1	10	0	0	0	0	0	1	1	0	6-1	13-2	1	2.08
Mar 12, 2004	Southeastern La.	9.0	6	1	1	3	3	2	0	0	0	0	1	2	0	7-1	14-2	1	2.01
Mar 13, 2004	Southeastern La.	9.0	12	1	1	4	5	1	0	0	0	0	1	4	0	5-1	15-2	2	1.95
Mar 16, 2004	New Orleans	7.0	3	0	0	1	10	1	0	0	1	0	0	1	0	14-0	16-2	2	1.86
Mar 19, 2004	at *South Carolina	11.0	8	3	3	4	12	2	0	1	1	0	2	0	0	6-3	17-2	2	1.90
Mar 20, 2004	at *South Carolina	8.0	11	12	11	7	7	1	0	2	1	0	0	1	0	5-12	17-3	2	2.37
Mar 21, 2004	at *South Carolina	9.0	9	7	7	6	7	3	1	1	0	0	0	1	0	12-7	18-3	3	2.59
Mar 23, 2004	at Centenary	9.0	11	3	3	0	7	1	0	1	0	2	1	0	0	9-3	19-3	3	2.61
Mar 26, 2004	*Miss. State	9.0	14	7	3	4	6	4	0	0	0	0	0	3	0	3-7	19-4	3	2.63
Mar 27, 2004	*Miss. State	9.0	9	6	6	2	9	3	1	0	1	0	2	0	0	11-6	20-4	3	2.77
Mar 28, 2004	*Miss. State	9.0	11	3	2	0	2	1	0	1	1	0	0	2	0	14-3	21-4	3	2.74
Mar 30, 2004	at New Orleans	9.0	10	5	5	3	10	4	1	1	1	0	0	1	0	12-5	22-4	3	2.83
Apr 02, 2004	at *Auburn	9.2	17	7	5	3	13	2	1	1	1	0	0	0	0	6-7	22-5	3	2.90
Apr 03, 2004	at *Auburn	9.0	5	3	3	0	7	3	0	1	0	0	1	0	0	5-3	23-5	3	2.90
Apr 04, 2004	at *Auburn	9.0	5	2	2	2	3	1	0	1	0	0	0	2	0	3-2	24-5	4	2.87
Apr 06, 2004	Tulane	9.0	7	1	1	2	4	1	0	0	2	0	0	1	0	0-1	24-6	4	2.81
Totals		269.0	251	99	84	84	210	48	5	17	16	6	17	27	2	243-99	24-6	4	2.81

\* = SEC game

2004 LSU Baseball  
 Miscellaneous Stats for LSU (as of Apr 07, 2004)  
 (All games)

MULTIPLE HIT GAMES		2	3	4	5+	Tot
16	Jon Zeringue.....	9	6	-	-	15
1	J.C. Holt.....	7	6	1	-	14
12	Ryan Patterson...	5	6	1	-	12
43	Nick Stavinoha...	11	-	-	-	11
21	Clay Harris.....	10	-	-	-	10
14	Matt Liuzza.....	8	2	-	-	10
3	Blake Gill.....	5	3	1	-	9
25	Will Harris.....	3	1	1	-	5
2	Derek Hebert.....	5	-	-	-	5
9	Dustin Weaver....	3	-	-	-	3
7	Ivan Naccarata...	3	-	-	-	3
34	Matt Horwath.....	2	1	-	-	3
-----						
TEAM		71	25	4	0	100

MULTIPLE RBI GAMES		2	3	4	5+	Tot
12	Ryan Patterson...	4	3	-	1	8
16	Jon Zeringue.....	4	1	1	1	7
14	Matt Liuzza.....	5	-	1	-	6
1	J.C. Holt.....	5	1	-	-	6
25	Will Harris.....	3	1	1	-	5
7	Ivan Naccarata...	2	1	-	1	4
43	Nick Stavinoha...	4	-	-	-	4
21	Clay Harris.....	2	-	2	-	4
9	Dustin Weaver....	3	-	-	-	3
3	Blake Gill.....	3	-	-	-	3
34	Matt Horwath.....	2	-	-	-	2
30	Bobby DiLiberto..	-	1	-	-	1
38	Brad Bass.....	1	-	-	-	1
10	Ty Jensen.....	1	-	-	-	1
-----						
TEAM		39	8	5	3	55

HITTING STREAKS		Longest Current	
14	Matt Liuzza.....	14	-
21	Clay Harris.....	11	-
12	Ryan Patterson...	11	2
1	J.C. Holt.....	10	-
43	Nick Stavinoha...	8	1
34	Matt Horwath.....	8	-
16	Jon Zeringue.....	7	-
3	Blake Gill.....	6	-
25	Will Harris.....	6	1
2	Derek Hebert.....	5	-
7	Ivan Naccarata...	4	3
9	Dustin Weaver....	4	4
10	Ty Jensen.....	2	-
38	Brad Bass.....	1	-
30	Bobby DiLiberto..	1	-

2004 LSU Baseball  
Miscellaneous Stats for LSU (as of Apr 07, 2004)  
(All games)

STARTING LINEUP BY POSITION (Team W-L record when starter)

-----  
PITCHER:  
35 Justin Meier..... 8 (6-2)  
13 Clay Dirks..... 7 (6-1)  
46 Lane Mestepey.... 6 (4-2)  
41 Nate Bumstead.... 5 (5-0)  
33 Jason Determann.. 3 (2-1)  
28 Michael Bonura... 1 (1-0)  
CATCHER:  
14 Matt Liuzza..... 27 (21-6)  
9 Dustin Weaver.... 3 (3-0)  
FIRST BASE:  
21 Clay Harris..... 16 (13-3)  
25 Will Harris..... 14 (11-3)  
SECOND BASE:  
3 Blake Gill..... 27 (22-5)  
34 Matt Horwath..... 2 (1-1)  
30 Bobby DiLiberto.. 1 (1-0)  
THIRD BASE:  
7 Ivan Naccarata... 16 (13-3)  
21 Clay Harris..... 14 (11-3)  
SHORTSTOP:  
34 Matt Horwath..... 14 (12-2)  
2 Derek Hebert..... 14 (11-3)  
3 Blake Gill..... 2 (1-1)  
LEFT FIELD:  
12 Ryan Patterson... 30 (24-6)  
CENTER FIELD:  
1 J.C. Holt..... 30 (24-6)  
RIGHT FIELD:  
16 Jon Zeringue..... 30 (24-6)  
DESIGNATED HITTER:  
43 Nick Stavinoha... 29 (23-6)  
14 Matt Liuzza..... 1 (1-0)

2004 LSU Baseball  
 Miscellaneous Stats for LSU (as of Apr 07, 2004)  
 (All games)

STARTING LINEUP BY LINEUP SPOT (Team W-L record when starter)

---

LEADOFF:

1 J.C. Holt.....	19	(15-4)
34 Matt Horwath.....	6	(5-1)
12 Ryan Patterson...	5	(4-1)

2ND SPOT:

12 Ryan Patterson...	23	(18-5)
1 J.C. Holt.....	7	(6-1)

3RD SPOT:

3 Blake Gill.....	18	(14-4)
14 Matt Liuzza.....	6	(5-1)
1 J.C. Holt.....	4	(3-1)
7 Ivan Naccarata...	1	(1-0)
12 Ryan Patterson...	1	(1-0)

CLEANUP:

43 Nick Stavinoha...	14	(12-2)
14 Matt Liuzza.....	11	(8-3)
21 Clay Harris.....	5	(4-1)

5TH SPOT:

21 Clay Harris.....	19	(16-3)
43 Nick Stavinoha...	7	(4-3)
16 Jon Zeringue.....	4	(4-0)

6TH SPOT:

16 Jon Zeringue.....	13	(9-4)
43 Nick Stavinoha...	7	(6-1)
14 Matt Liuzza.....	6	(6-0)
21 Clay Harris.....	2	(1-1)
25 Will Harris.....	1	(1-0)
7 Ivan Naccarata...	1	(1-0)

7TH SPOT:

7 Ivan Naccarata...	9	(7-2)
16 Jon Zeringue.....	6	(5-1)
3 Blake Gill.....	5	(5-0)
21 Clay Harris.....	4	(3-1)
25 Will Harris.....	2	(1-1)
14 Matt Liuzza.....	2	(1-1)
12 Ryan Patterson...	1	(1-0)
30 Bobby DiLiberto..	1	(1-0)

8TH SPOT:

16 Jon Zeringue.....	7	(6-1)
3 Blake Gill.....	6	(4-2)
25 Will Harris.....	5	(4-1)
7 Ivan Naccarata...	4	(3-1)
14 Matt Liuzza.....	3	(2-1)
9 Dustin Weaver....	2	(2-0)
2 Derek Hebert.....	2	(2-0)
43 Nick Stavinoha...	1	(1-0)

9TH SPOT:

2 Derek Hebert.....	12	(9-3)
34 Matt Horwath.....	10	(8-2)
25 Will Harris.....	6	(5-1)
9 Dustin Weaver....	1	(1-0)
7 Ivan Naccarata...	1	(1-0)



2004 LSU Baseball  
Season Game Highs for LSU (as of Apr 07, 2004)  
(All games)  
TEAM GAME HIGHS

Batting

At bats: 45 - vs UCF (Feb 14, 2004)  
Runs scored: 19 - vs Jacksonville State (Feb 22, 2004)  
Hits: 20 - vs Jacksonville State (Feb 22, 2004)  
RBIs: 17 - vs Jacksonville State (Feb 22, 2004)  
Doubles: 5 - vs Louisiana-Monroe (Mar 09, 2004)  
5 - vs Centenary (Mar 23, 2004)  
Triples: 2 - vs New Orleans (Mar 16, 2004)  
Home runs: 5 - vs UCF (Feb 14, 2004)  
Total bases: 35 - vs UCF (Feb 14, 2004)  
Walks: 9 - vs UCF (Feb 14, 2004)  
Strikeouts: 13 - vs Jacksonville State (Feb 20, 2004)  
Sac hits: 2 - vs South Carolina (Mar 19, 2004)  
Sac flies: 3 - vs New Orleans (Mar 16, 2004)  
Stolen bases: 3 - vs Auburn (Apr 04, 2004)  
Hit by pitch: 2 - (5 games )  
Caught stealing: 2 - vs UCF (Feb 13, 2004)  
Runners LOB: 13 - vs UCF (Feb 14, 2004)  
Hit into DP: 3 - vs Jacksonville State (Feb 21, 2004)  
3 - vs Texas State (Feb 29, 2004)

Fielding

Putouts: 33 - vs South Carolina (Mar 19, 2004)  
Assists: 16 - (4 games )  
Errors: 4 - vs Houston (Mar 06, 2004)  
Passed balls: 1 - (5 games )  
DPs turned: 5 - vs Miss. State (Mar 26, 2004)

Pitching

Innings pitched: 11.0 - vs South Carolina (Mar 19, 2004)  
Strikeouts: 13 - vs Auburn (Apr 02, 2004)  
Hits allowed: 3 - vs New Orleans (Mar 16, 2004)  
Wild pitches: 2 - vs Houston (Mar 05, 2004)  
2 - vs Tulane (Apr 06, 2004)  
Hit batters: 2 - vs UCF (Feb 15, 2004)  
2 - vs South Carolina (Mar 19, 2004)  
2 - vs Miss. State (Mar 27, 2004)

2004 LSU Baseball  
Season Game Highs for LSU (as of Apr 07, 2004)  
(All games)  
INDIVIDUAL GAME HIGHS

Batting

At bats: 6 - (4 games )  
Runs scored: 3 - (11 games )  
Hits: 4 - (4 games )  
RBIs: 7 - Ivan Naccarata vs Miss. State (Mar 28, 2004)  
Doubles: 2 - (4 games )  
Triples: 1 - (8 games )  
Home runs: 2 - Jon Zeringue vs South Carolina (Mar 21, 2004)  
2 - Matt Liuzza vs South Carolina (Mar 21, 2004)  
2 - Ivan Naccarata vs Miss. State (Mar 28, 2004)  
Total bases: 9 - Jon Zeringue vs Houston (Mar 07, 2004)  
9 - Jon Zeringue vs South Carolina (Mar 21, 2004)  
Walks: 3 - Clay Harris vs UCF (Feb 14, 2004)  
3 - Blake Gill vs Houston (Mar 07, 2004)  
Strikeouts: 4 - Jon Zeringue vs UCF (Feb 15, 2004)  
4 - Derek Hebert vs Louisiana-Monroe (Mar 09, 2004)  
Sac hits: 2 - J.C. Holt vs South Carolina (Mar 19, 2004)  
Sac flies: 1 - (19 games )  
Stolen bases: 1 - (16 games )  
Hit by pitch: 1 - (18 games )  
Caught stealing: 1 - (5 games )  
Runners LOB: 7 - Derek Hebert vs Houston (Mar 05, 2004)

Fielding

Putouts: 15 - Matt Liuzza vs Auburn (Apr 02, 2004)  
Assists: 8 - Matt Horwath vs Auburn (Apr 03, 2004)  
Errors: 2 - Ivan Naccarata vs Miss. State (Mar 28, 2004)  
Passed balls: 1 - (5 games )

Pitching

Innings pitched: 9.0 - Clay Dirks vs Tulane (Mar 02, 2004)  
9.0 - Clay Dirks vs Auburn (Apr 03, 2004)  
Strikeouts: 9 - Justin Meier vs Auburn (Apr 02, 2004)  
Wild pitches: 2 - Justin Meier vs Houston (Mar 05, 2004)  
Hit batters: 2 - Clay Dirks vs UCF (Feb 15, 2004)  
2 - Justin Meier vs South Carolina (Mar 19, 2004)  
2 - Clay Dirks vs Miss. State (Mar 27, 2004)



2004 LSU Baseball

Overall Statistics for LSU (as of Apr 07, 2004)

(SEC games only Sorted by Batting avg)

Record: 6-3 Home: 2-1 Away: 4-2 SEC: 6-3

Player	AVG	GP-GS	AB	R	H	2B	3B	HR	RBI	TB	SLG%	BB	HBP	SO	GDP	OB%	SF	SH	SB-ATT	PO	A	E	FLD%
21 Clay Harris.....	.364	9-9	33	8	12	2	0	2	8	20	.606	4	1	5	2	.436	1	0	0-0	50	11	1	.984
16 Jon Zeringue.....	.364	9-9	33	12	12	1	0	4	9	25	.758	5	1	5	0	.462	0	0	1-1	15	1	0	1.000
3 Blake Gill.....	.351	9-9	37	5	13	3	0	0	3	16	.432	4	0	4	1	.415	0	0	1-1	24	30	3	.947
1 J.C. Holt.....	.324	9-9	34	8	11	5	0	2	5	22	.647	5	1	6	0	.415	1	3	1-2	15	0	0	1.000
12 Ryan Patterson...	.311	9-9	45	8	14	2	0	1	8	19	.422	0	1	7	0	.319	1	0	1-1	17	3	0	1.000
43 Nick Stavinoha...	.273	9-9	33	4	9	2	0	1	7	14	.424	3	0	4	0	.300	4	0	2-2	0	0	0	.000
14 Matt Liuzza.....	.237	9-9	38	7	9	1	0	3	6	19	.500	3	0	5	1	.293	0	1	0-0	61	8	0	1.000
-----																							
7 Ivan Naccarata...	.333	7-4	21	5	7	1	0	3	10	17	.810	1	0	3	2	.348	1	0	0-0	8	5	3	.813
34 Matt Horwath.....	.278	5-5	18	3	5	2	0	0	2	7	.389	5	0	6	0	.435	0	0	0-0	5	18	2	.920
25 Will Harris.....	.250	7-5	16	2	4	1	0	0	5	5	.313	2	0	2	0	.333	0	0	0-0	37	1	0	1.000
2 Derek Hebert.....	.176	5-4	17	2	3	1	0	0	0	4	.235	1	0	4	2	.222	0	0	0-0	6	14	1	.952
10 Ty Jensen.....	.000	2-0	1	0	0	0	0	0	0	0	.000	0	0	0	0	.000	0	0	0-0	0	0	0	.000
30 Bobby DiLiberto..	.000	1-0	1	0	0	0	0	0	0	0	.000	0	0	0	0	.000	0	0	0-0	0	2	0	1.000
32 Rhatt Buteau.....	.000	2-0	1	1	0	0	0	0	0	0	.000	0	0	1	0	.000	0	0	0-0	0	0	0	.000
9 Dustin Weaver....	.000	1-0	0	0	0	0	0	0	0	0	.000	0	0	0	0	.000	0	0	0-0	2	0	0	1.000
Totals.....	.302	9-9	328	65	99	21	0	16	63	168	.512	33	4	52	8	.365	8	4	6-7	248	105	13	.964
Opponents.....	.274	9-9	325	50	89	20	3	8	46	139	.428	28	5	66	9	.341	0	5	3-5	246	87	11	.968

LOB - Team (66), Opp (65). DPs turned - Team (13), Opp (9). Picked off - Patterson 2.

(SEC games only Sorted by Earned run avg)

Player	ERA	W-L	APP	GS	CG	SHO/CBO	SV	IP	H	R	ER	BB	SO	2B	3B	HR	AB	B/Avg	WP	HBP	BK	SFA	SHA
27 Greg Smith.....	0.00	1-0	3	0	0	0/0	1	3.0	2	0	0	1	5	2	0	0	10	.200	0	0	0	0	0
33 Jason Determann..	0.00	0-0	1	0	0	0/0	0	0.2	0	0	0	0	0	0	0	0	1	.000	0	0	0	0	0
13 Clay Dirks.....	2.70	2-0	3	2	1	0/0	1	20.0	11	6	6	4	17	5	0	2	72	.153	0	3	0	0	0
29 Jordan Faircloth.	3.38	0-2	3	0	0	0/0	0	10.2	12	4	4	2	6	2	0	1	34	.353	0	0	0	0	2
41 Nate Bumstead....	4.15	3-0	3	3	0	0/0	0	21.2	23	11	10	5	9	5	1	2	88	.261	1	0	0	0	0
35 Justin Meier.....	5.00	0-1	3	3	0	0/0	0	18.0	29	16	10	8	21	5	1	2	83	.349	2	2	0	0	2
46 Lane Mestepey....	7.71	0-0	2	1	0	0/0	0	4.2	5	5	4	3	0	0	0	1	17	.294	0	0	0	0	0
28 Michael Bonura...	12.00	0-0	1	0	0	0/0	0	3.0	3	4	4	4	6	0	0	0	12	.250	1	0	0	0	1
6 Collin Smith.....	36.00	0-0	1	0	0	0/0	0	1.0	4	4	4	1	2	1	1	0	8	.500	1	0	0	0	0
Totals.....	4.57	6-3	9	9	1	0/0	2	82.2	89	50	42	28	66	20	3	8	325	.274	5	5	0	0	5
Opponents.....	6.70	3-6	9	9	0	0/0	1	82.0	99	65	61	33	52	21	0	16	328	.302	5	4	1	8	4

PB - Team (2), Liuzza 1, Weaver 1. Pickoffs - Team (2), Determann 1, Faircloth 1, Opp (2). SBA/ATT - Liuzza (3-5), Faircloth (1-2), Dirks (1-1), Bumstead (1-1), Meier (0-1).

## 2004 LSU Baseball

Overall Statistics for LSU (as of Apr 07, 2004)

(SEC games only Sorted by Fielding pct)

Player	C	PO	A	E	FLD%	DPs	SBA	CSB	SBA%	PB	CI
14 Matt Liuzza.....	69	61	8	0	1.000	2	3	2	.600	1	0
25 Will Harris.....	38	37	1	0	1.000	6	0	0	---	0	0
12 Ryan Patterson...	20	17	3	0	1.000	1	0	0	---	0	0
16 Jon Zeringue.....	16	15	1	0	1.000	0	0	0	---	0	0
1 J.C. Holt.....	15	15	0	0	1.000	0	0	0	---	0	0
29 Jordan Faircloth.	7	2	5	0	1.000	1	1	1	.500	0	0
41 Nate Bumstead....	6	5	1	0	1.000	0	1	0	1.000	0	0
9 Dustin Weaver....	2	2	0	0	1.000	0	0	0	---	1	0
33 Jason Determann..	2	0	2	0	1.000	0	0	0	---	0	0
30 Bobby DiLiberto..	2	0	2	0	1.000	0	0	0	---	0	0
28 Michael Bonura...	1	1	0	0	1.000	0	0	0	---	0	0
21 Clay Harris.....	62	50	11	1	.984	7	0	0	---	0	0
2 Derek Hebert.....	21	6	14	1	.952	2	0	0	---	0	0
3 Blake Gill.....	57	24	30	3	.947	9	0	0	---	0	0
34 Matt Horwath.....	25	5	18	2	.920	3	0	0	---	0	0
7 Ivan Naccarata...	16	8	5	3	.813	0	0	0	---	0	0
35 Justin Meier.....	5	0	3	2	.600	0	0	1	.000	0	0
13 Clay Dirks.....	2	0	1	1	.500	0	1	0	1.000	0	0
43 Nick Stavinoha...	0	0	0	0	.000	0	0	0	---	0	0
6 Collin Smith.....	0	0	0	0	.000	0	0	0	---	0	0
32 Rhett Buteau.....	0	0	0	0	.000	0	0	0	---	0	0
46 Lane Mestepey....	0	0	0	0	.000	0	0	0	---	0	0
10 Ty Jensen.....	0	0	0	0	.000	0	0	0	---	0	0
27 Greg Smith.....	0	0	0	0	.000	0	0	0	---	0	0
Totals.....	366	248	105	13	.964	13	3	2	.600	2	0
Opponents.....	344	246	87	11	.968	9	6	1	.857	0	0