

LEYBALL VOLLEYBALL
LEYBALL THIS IS LSU



LEYBALL VOLLEYBALL
LEYBALL VOLLEYBALL
LEYBALL VOLLEYBALL

MELODY CLARK



It hasn't taken Fran Flory long to turn around the LSU volleyball program. She took over a team that had hit rock bottom in 1997 and has methodically turned it into a team that expects to win every time it steps on the court. From 0-15 in the SEC the season prior to her arrival to a 34-30 league mark over the last four years, Flory has made her impact felt on the court. With her ability to identify and develop talent, relate to her players and surround herself with top-notch assistant coaches, Fran Flory has made this a great time to be a part of LSU volleyball.

"LSU has everything a student-athlete could ask for, from the facilities to the administration. We expect to win championships and every LSU student-athlete has those expectations. Our teams are committed to winning both on the court and in the classroom.

"Team togetherness and team ownership are two very important factors in our program. Our teams are committed

not only to LSU, but also to each other. Team ownership is vital to the success of any team, company or organization. Everyone must have a clear understanding of the goals and direction of the program. We are very careful to define roles and responsibilities so everyone is headed in the same direction."

Flory came to LSU from the head coaching position at Kentucky, where she led the Wildcats to one NCAA Tournament appearance and was named the AVCA South District Coach of the Year in 1993. Prior to that, she served as an assistant at LSU where she helped the Tigers to three SEC Championships and two Final Four appearances.

Now, entering her ninth season, Flory will continue to build on the solid foundation that she has laid out for the LSU volleyball program and continue to design her program around the fundamentals that have made her a success at every stop of her coaching career.

Speaking of Coach Fran Flory

"Fran is one of the finest people I have ever met. I have had the pleasure of watching her become one of the finest coaches in our profession. It would be an honor to have my daughter play for her. She has great enthusiasm, is very easy to work with and has a true desire to be successful. She has my utmost admiration and support."

- Mick Haley,
Head coach at Southern California;
Head coach 2000 US Olympic Team

"Fran is one of the most remarkable people that I have had the pleasure of knowing. She has been a mentor and a friend throughout my playing and coaching career. She is one of those people who have the ability to make you feel that you have the strength and courage to accomplish anything and overcome any obstacle."

- Julie Stempel Ibieta,
Former head coach at University of New Orleans,
LSU volleyball player (1988-91)



To win championships.

**To help student-athletes
develop to their full
potential, both on the court
and in the classroom.**

**To help each
student-athlete earn their
degree and prepare for the
next step in their lives.**

EDUCATION FIRST

A staple of the LSU program since Flory arrived in 1998 has been the tremendous academic success of her players. The Tigers have placed the second-most players on the SEC Academic Honor Roll in the last six years of any school in the league. In four of the past six seasons, LSU has led the conference.

"Balancing a successful career in the classroom and on the court is a difficult task," said Flory. "It requires a great deal of discipline and commitment. Our staff truly understands what it takes and shares in the commitment to insure the academic and athletic success of our student-athletes."

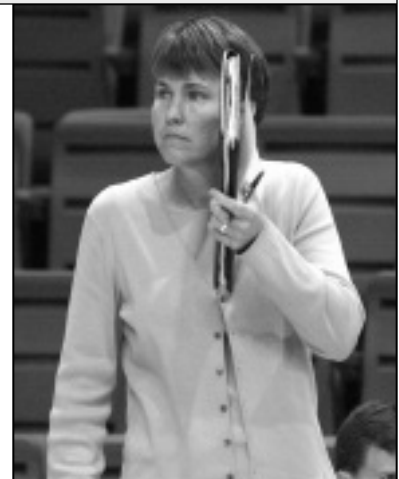
BUILDING FOR SUCCESS IN LIFE

When athletes sign to play for coach Flory, they sign on not only to maximize their potential as a volleyball player, but also to maximize their potential as a person.

"My goal for every student-athlete who competes on my team is to allow and to help them develop into a successful person in all aspects of life. When they graduate, I want them to truly feel prepared for the next step in their lives, whatever that may be. We are not just about developing successful volleyball players, our program is about developing successful people.

"Our philosophy is one that we all control our own destiny. Each day we make choices in all aspects of our lives that will influence who and what we become. We strive to provide the freedom and correct environment to make the choices that will prepare our student-athletes for their future."

"My goal for every student-athlete who competes on my team is to allow and to help them develop into a successful person in all aspects of life."



INTRO

THIS IS LSU

TIGERS

COACHES

OPPONENTS

REVIEW

HISTORY

RECORDS

MEDIA

The state capitol building of Louisiana, located in Baton Rouge, is the tallest capitol building in the nation at 34 stories.



Hospitality and comfort are a Southern tradition practiced to perfection around Baton Rouge. Minutes from the city, ancient moss-draped oaks, fragrant honeysuckle, formal gardens and the finest examples of Southern architecture await. Combine this with the excitement of the mighty Mississippi River, Cajun music and a gourmet meal that is topped with freshly brewed cafe-au-lait at one of Baton Rouge's fine restaurants. Mix in an LSU athletic event, and Baton Rouge becomes one of the most attractive cities for living, entertainment and education in the South.



Baton Rouge Facts

POPULATION:

Baton Rouge (metro) 807,754*

* - estimated after Hurricane Katrina

AVERAGE TEMPERATURES:

High	81.3
Low	52.5
Average	67.5

The average annual temperature in Baton Rouge is 68 degrees and the city features a subtropical climate highlighted by mild winter months.



Proximity

Baton Rouge is just an hour away from the French Quarter in New Orleans and even closer to the million-acre Atchafalaya Swamp, which is called one of the biggest fishing ponds in the country.



Mississippi River

Baton Rouge, the capital city of Louisiana, sits on the banks of the Mississippi River.

Distance Chart from Baton Rouge (BASED ON 70 MPH SPEED):

Atlanta, Ga.7 hours
Biloxi, Miss.2 hours
Birmingham, Ala.6 hours
Dallas, Texas6 1/2 hours
Houston, Texas4 hours

Jackson, Miss.2 1/2 hours
Jacksonville, Fla.8 1/2 hours
Little Rock, Ark.5 hours
Mobile, Ala.3 hours
Monroe, La.2 1/2 hours

New Orleans, La.1 hour
Orlando, Fla.10 hours
Pensacola, Fla.4 hours
Shreveport, La.4 hours

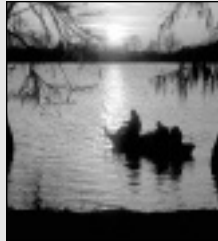


The St. Louis Cathedral in Jackson Square is located in the heart of the historic French Quarter area of New Orleans.



Unique Culture

Louisiana is home to Mardi Gras, a two-week party that includes more than 60 parades and millions of visitors from around the world. All year long New Orleans Jazz, Creole culture, stately riverboats and some of the finest cuisine in the world is mixed into the diverse and renowned culture of Louisiana.



Sportsman's Paradise

Louisiana offers some of the finest hunting, fishing and boating opportunities in the country.



Cuisine

Foods like boiled crawfish, jambalaya, shrimp etouffee, and gumbo make the Cajun and Creole cuisine of Louisiana the envy of the nation.



The Brown Pelican is Louisiana's State Bird.

Louisiana, one of America's most culturally and geographically diverse states, is located in the heart of the Deep South. Adjacent to the Gulf of Mexico and dotted with hundreds of lakes and bayous, Louisiana is home to all types of terrain from swamps and marshes to lush forests and gentle hills. The state is known for its charm and friendly people, and still maintains the stately antebellum plantations and majestic oaks of its early days. The atmosphere is elegant, yet relaxed and casual.

Louisiana Facts

Nickname:The Pelican State
Admitted to Union: April 30, 1812
State Colors:Gold, White and Blue
State Bird:Brown Pelican

State Dog:Catahoula Leopard Dog
State Tree:Bald Cypress
State Flower:Magnolia
Climate:Subtropical





Louisiana State University and Agricultural & Mechanical College has, throughout its 144-year history, served the people of Louisiana, the region, the nation, and the world. LSU is creating a revolution, one of pervasive change and advancement. For the past five years, the focus of the LSU community has been an increased commitment to excellence. Our progress has been dramatic and shows no sign of stopping.



Having witnessed many of yesterday's possibilities become today's tangible realities, the LSU community set forth to capitalize on its success. The goal was to improve our standing as a nationally competitive flagship university. Following intense discussions among the LSU Board of Supervisors, campus administrators, faculty, and student leaders, the objectives required to reach this status crystallized, providing the impetus for LSU's National Flagship Agenda.

LSU Facts

Location: Baton Rouge, La.
 Founded: January 2, 1860
 Enrollment: 30,584
 President: Dr. William Jenkins
 Major Fields for Bachelor's Degrees: 72
 Major Fields for Master's Degrees: 72
 Major Fields for Doctoral Degrees: 54



"The Most Diverse school in the nation."

Newsweek magazine named Louisiana State University the "Most Diverse" school in the nation in the Sept. 3, 2003 issue. The enrollment consists of 24 percent minority students.



"LOUISIANA STATE UNIVERSITY HAS A TRADITION OF GRATITUDE EXPRESSED IN SERVICE TO COMMUNITY AND COUNTRY."



President George W. Bush
2004 LSU SPRING COMMENCEMENT

- INTRO
- THIS IS LSU
- TIGERS
- COACHES
- OPPONENTS
- REVIEW
- HISTORY
- RECORDS
- MEDIA

College of Agriculture

Agricultural Business (B.S.)
Agribusiness Finance
Agribusiness Management
International Marketing
Animal, Dairy, & Poultry Sciences (B.S.)
Animal Sciences
Dairy Foods Technology
Dairy Production
Poultry Sciences
Preveterinary Medicine-Animal
Preveterinary Medicine-Dairy
Preveterinary Medicine-Poultry
Science & Technology-Animal Science
Science & Technology-Dairy Science
Science & Technology-Poultry Science
Environmental Management Systems (B.S.)
Environmental Science
Policy Analysis
Resource Conservation
Family, Child, & Consumer Sciences (B.S.)
Consumer Science
Human Services Management
Food Science & Technology (B.S.)
Food Business/Marketing
Food Chemistry & Analysis
Food Processing & Technology
Food Safety/Applied Microbiology
Forestry (Forest Management) (B.S.F.)
Ecological Restoration
Forest Products
Forest Resource Management
Nutritional Sciences (B.S.)
Dietetics
Nutritional Sciences/Premedical
Plant & Soil Systems (B.S.)
Agricultural Pest Management-Entomology
Agricultural Pest Management-Plant
Pathology
Crop Management
Horticultural Science
Ornamentals, Olericulture, & Pomology
Soil Science
Turfgrass Management
Urban Entomology
Textiles, Apparel, & Merchandising (B.S.)
Apparel Design
Merchandising
Textile Science
Vocational Education (B.S.)
Adult, Extension, International Education

Agricultural Education
Business Education
Career Development
Home Economics Education
Human Resource Leadership and Development
Industrial Education
Training & Development
Wildlife & Fisheries (B.S.)
Aquaculture
Conservation Biology
Fisheries
Preveterinary Medicine-Wildlife & Fisheries
Wetland Science
Wildlife Ecology
Wildlife Law Enforcement

College of Art & Design

Architecture (B.Arch.)
Interior Design (B.I.D.)
Landscape Architecture (B.L.A.)
Studio Art (B.F.A.)
Ceramics
Graphic Design
Jewelry/Metalsmithing
Painting
Photography
Printmaking
Sculpture

College of Arts & Sciences

Anthropology (B.A.)
Communication Disorders (B.A.)
Communication Studies (B.A.)
Economics (B.A.)
English (B.A.)
Creative Writing
Literature
Secondary Education-English
Writing & Culture
French (B.A.)
French & Francophone Cultural Studies
French & Francophone Political Studies
International Business
International Studies
Literary Studies
Secondary Education-French
General Studies (B.G.S.)
Geography (B.A. & B.S.)
German (B.A.)
History (B.A.)

Secondary Education-History
International Studies (B.A.)
Africa & the Middle East
Asia
Europe
Global Studies
Latin America
Russia & Central Asia
Latin (B.A.)
Liberal Arts (B.A.)
African & African American Studies
Art History
Studio Art
Mathematics (B.S.)
Actuarial Science
Applied/Discrete Mathematics
Applied Mathematics/Communications
Engineering
Computer Science
Mathematics
Secondary Education-Mathematics
Philosophy (B.A.)
Religious Studies
Political Science (B.A.)
Psychology (B.A. & B.S.)
Russian Area Studies (B.A.)
Sociology (B.A.)
Applied Sociology
Criminology
Rural Sociology
Spanish (B.A.)
Secondary Education-Spanish
Women's & Gender Studies (B.A.)
College of Basic Sciences
Biochemistry (B.S.)
Biological Sciences (B.S.)
Marine Biology
Secondary Education-Biology
Chemistry (B.S.)
Biological Chemistry
Chemical Physics
Chemistry
Chemistry and a Second Discipline
Environmental Chemistry
Materials
Polymers
Preprofessional Chemistry
Secondary Education-Chemistry
Computer Science (B.S.)
Geology (B.S. Geol.)
Environmental Geology

Geology
Microbiology (B.S.)
Physics (B.S.)
Astronomy
Medical Physics
Physics
Physics and a Second Discipline
Secondary Education-Physics

E. J. Ourso College of Business

Accounting (B.S.)
Management Accounting
Economics (B.S.)
Empirical Economic Analysis
Finance (B.S.)
General Business Administration (B.S.)
Business Administration-Prelaw
Business & Public Administration
Information Systems & Decision Sciences (B.S.)
International Trade & Finance (B.S.)
Empirical Economics Analysis
Management (B.S.)
Entrepreneurship
Human Resource Management
Management
Marketing (B.S.)

College of Education

Early Childhood Education: PK-3 Teacher Certification (B.S.)
Elementary Grades Education (B.S.)
Four-Year Teacher Certification, Grades 1-6
Holmes Certification
Kinesiology (B.S.)
Athletic Training
Fitness Studies
Health & Physical Education Teacher Certification
Human Movement Science
Sports Studies
Secondary Education (B.S.)
Art

College of Engineering

Biological Engineering (B.S.B.E.)
Chemical Engineering (B.S.Che.E.)
Civil Engineering (B.S.C.E.)
Computer Engineering (B.S.E.E.)
Construction Management (B.S.C.M.)
Electrical Engineering (B.S.E.E.)

Environmental Engineering (B.S.Env.E.)
Industrial Engineering (B.S.I.E.)
Mechanical Engineering (B.S.M.E.)
Petroleum Engineering (B.S.P.E.)

Manish School of Mass Communication

Mass Communication (B.A.M.C.)
Advertising
Electronic Media
Journalism
Political Communication
Public Relations

College of Music & Dramatic Arts

Music (B.A.)
Music (B.M.)
Brass
Composition
Journalism
Political Communication
Public Relations
Harp
Organ
Percussion
Piano Pedagogy
Piano Performance
String
Voice
Woodwind
Music Education (B.M.Ed.)
Instrumental
Vocal
Theatre (B.A.)
Arts Administration
Design/Technology
Literature, History, & Theory
Performance
Theatre Studies

Preprofessional Programs * (Nondegree)

Allied Health Programs
Dental Hygiene
Dental Laboratory Technology
Ophthalmic Medical Technology
Physician's Assistant
Premedical Technology
Prenursing
Preoccupational Therapy
Prephysical Therapy
Rehabilitation Counseling
Respiratory Therapy

* The final two-three years of these preprofessional programs are offered by the LSU Health Sciences Center and/or other medical schools. These are nondegree programs.



INTRO

THIS IS LSU

TIGERS

COACHES

OPPONENTS

REVIEW

HISTORY

RECORDS

MEDIA



Seimone Augustus

Received her degree in 2005 after just three years at LSU and while earning the NCAA Women's Basketball National Player of the Year honors twice. The first pick of the 2006 WNBA draft by the Minnesota Lynx.



Shaquille O'Neal

Four-time NBA champion, including the 2006 title with Miami, Shaquille O'Neal, the 2000 NBA MVP, joined a long list of prominent LSU alumni when he earned his degree in General Studies in December 2000.



While LSU continues to make its mark on the playing field, winning 43 national titles, the state's flagship University continues to be a breeding ground for some of the greatest minds in the world—past and present.



Eduardo Aguirre, Jr.

Named the first Director of U.S. Citizenship and Immigration Services (USCIS) for the Department of Homeland Security in 2003, Aguirre, Jr., was appointed the U.S. Ambassador to Spain in 2005.



Dr. James Andrews

A world-renowned orthopedic surgeon, Andrews is a 1963 graduate of LSU and a 1967 graduate of LSU Medical School. While at LSU, Andrews won the SEC indoor and outdoor titles in the pole vault.



James Bernhard, Jr.

The co-founder and chief executive officer of the Shaw Group, Inc., a publicly traded engineering, construction, fabrication, environmental, and industrial services organization.



Lod Cook

Graduated from LSU with a bachelor's degree in Mathematics in 1955 and then earned his Master's degree in Petro Engineering in 1955. Cook served as CEO of ARCO for nine years.



Kevin Faulk

Excelled in both the classroom and on the playing field as he graduated in just three years. Faulk is currently a member of the three-time Super Bowl Champion New England Patriots.



Jim Flores

Graduated from LSU and currently is the Vice Chairman of Ocean Energy, the World's Leader in Oil Exploration, based in Houston, Texas.



PROMINENT LSU ALUMNI

Dr. Larry O. Arthur - AIDS researcher.

John Ed Bradley - Sports Illustrated writer and novelist.

John Breaux - U.S. Senator (1987-2005) and U.S. Congressman (1972-86) from Louisiana.

Kenneth Brown - Host of Home and Garden Television (HGTV)'s "reDesign".

Wil Calhoun - Executive Producer of television sitcom "Friends".

"Lightning Joe" Lawton Collins - Chief of Staff for President Harry Truman.

Eric Arturo Delvalle - President of Panama (1985-1988).

A. Wright Elliott - Retired executive vice president, Chase Manhattan Bank.

Graves Erskine - U.S. Marine Corps General in WWII.

Maxime A. Faget - Designed Mercury and Gemini spacecrafts.

Carlos Roberto Flores - President of Honduras (1997-2001).

Mary Carol Flake Flores - Former first lady of Honduras.

Murphy "Mike" Foster, Jr. - Former governor of Louisiana (1996-2004).

Kevin Griffin - Lead singer of the platinum-selling rock band "Better than Ezra"

Paul Groves - Award-winning tenor with the Metropolitan Opera

Rufus William (Bill) Harp - Television set decorator for series including "L.A. Law" and "Moonlighting"

Walter Hitesman - Former president, Reader's Digest.

Hubert Humphrey - U.S. vice president (1965-69).

Eddie J. Jones - Former president of the NFL's Miami Dolphins franchise.

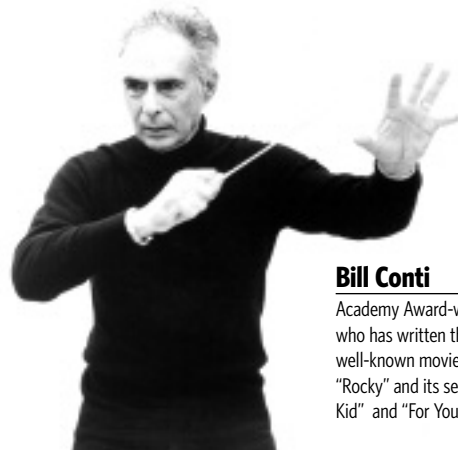
W. Vernon Jones - Senior Scientist for Suborbital Research, NASA headquarters

Russell Long - U.S. Senator from Louisiana (1948-87).

Ray Marshall - Secretary of Labor under President Jimmy Carter.

James E. Maurin - Founding partner and CEO of Stirling Properties, a national real estate services firm.

Grover Murray - Former president of Texas Tech University.



Bill Conti

Academy Award-winning composer who has written theme music for well-known movies, including "Rocky" and its sequels, "The Karate Kid" and "For Your Eyes Only".

Jake Lee Netterville - Chairman of the board of Postlethwaite and Netterville, the largest Louisiana-based public accounting firm.

Edwin Newman - Longtime NBC News journalist and author.

Carolyn Bennett Patterson - Former senior editor, National Geographic.

J. Howard Rambin - Former CEO and Chairman of the Board, Texaco.

Rex Reed - Drama critic, syndicated columnist.

Maj. Gen. Thomas Rhame - Led 1st Infantry Division against Iraq during Persian Gulf War.

Thomas O. Ryder - Chairman of the Board, The Reader's Digest Association.

Dolores Spikes - Former President of the Southern University System and the University of Maryland-Eastern Shore.

Ray Strother - Author, political consultant.

David Suarez - Co-owner of Atlantic Company of America, Inc., which performed the historic restoration of the Washington Monument, the Smithsonian's Air and Space Museum and the main U.S. Treasury Building.

Joanne Woodward - Academy Award-winning actress and wife of Paul Newman.



Reinosuke Hara

Researched at LSU in the 1950s and then later received the honorary Doctorate of Science degree from LSU in 1992. Former President and CEO of Seiko Instruments.



E. Robert Theriot III

Senior resident vice-president of Merrill Lynch's Houston branch, the firm's third largest domestic office, generating more than \$130 million in revenue with assets in excess of \$22 billion.



Mary L. Landrieu

Became the first woman from Louisiana elected to a full term in the United States Senate in 1997.



Marty Sixkiller

Senior Technical Director for PDI/DreamWorks' movies "Antz", "Shrek", "Shrek 2", "Madagascar" and "Over the Hedge".

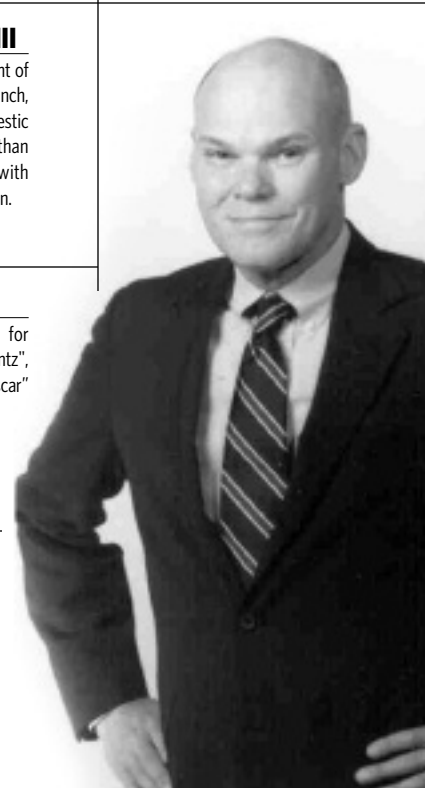


Harry J. Longwell

Graduated from LSU in 1963 with a Bachelor's degree in Petroleum Engineering and retired in 2004 as the Executive Vice President and Director of ExxonMobil.

James Carville

Received both a Bachelor's degree and Law degree from LSU. Carville gained fame in the 1990's as the chief campaign strategist for Bill Clinton and Al Gore. Carville also penned a best-selling memoir titled All's Fair: Love, War and Running for President.



INTRO

THIS IS LSU

TIGERS

COACHES

OPPONENTS

REVIEW

HISTORY

RECORDS

MEDIA



Retired Jerseys

INTRO

THIS IS LSU

TIGERS

COACHES

OPPONENTS

REVIEW

HISTORY

RECORDS

MEDIA

The five individuals on this page are the only men to have their jerseys retired by LSU. Basketball has retired the No. 23 for Pete Maravich, No. 50 for Bob Pettit, Jr., and No. 33 for Shaquille O'Neal. Football's only retired jersey is the No. 20 worn by Billy Cannon, while baseball retired the No. 15 in honor of long-time coach and current athletics director Skip Bertman.



50

Bob Pettit

Led LSU to its first NCAA Final Four in 1953 and he later became the first player in NBA history to break the 20,000-plus point barrier. Pettit is a member of the NBA Hall of Fame and in 1997 he was named as one of the top 50 players in NBA history.



23

Pete Maravich

"Pistol Pete" Maravich still holds the NCAA record for career points with 3,667 and for career scoring average with 44.2 points a game. He was named the National Player of the Year in 1970 after leading the Tigers to the NIT Final Four. He scored 50+ points an amazing 28 times. He went on to a 10-year professional career and was selected as one of the NBA's 50 greatest players in 1997.



33

Shaquille O'Neal

The first pick in the 1992 NBA Draft, O'Neal was named MVP of the league in 2000 and was a three-time NBA Finals MVP after leading the Los Angeles Lakers to three World Championships. At LSU, O'Neal averaged 21.6 points and 13.6 rebounds for his career, and in 1991, he was named the World's Amateur Athlete of the Year as well as SEC Athlete of the Year and National Player of the Year. In 1997, he was named as one of the top 50 players in NBA history.



20

Billy Cannon

One of the true legends of college football in the South, Cannon was the 1959 Heisman Trophy winner and helped the Tigers to the 1958 national title. Cannon's most memorable performance came in 1959 against Ole Miss when No. 1 LSU trailed No. 3 Ole Miss 3-0 in the fourth quarter. He fielded a punt, broke seven tackles and returned it 89 yards for the game-winning touchdown in a 7-3 victory. He went on to a successful 11-year professional career.



15

Skip Bertman

A legend in the college baseball ranks, Bertman created a dynasty at LSU, guiding the Tigers to five national titles in a 10-year stretch from 1991-2000. He also skippered the United States to a bronze medal at the 1996 Olympics in Atlanta and was an assistant on the gold medal-winning U.S. squad in Seoul, Korea in 1988. Bertman retired from coaching following the 2001 season and is currently the LSU athletics director. In 2006, he was one of 10 inaugural inductees into the College Baseball Hall of Fame in Lubbock, Texas.

LSU's Success in each of its 20 sports is evident with this outstanding list of former Tigers.

INTRO
THIS IS LSU
TIGERS
COACHES
OPPONENTS
REVIEW
HISTORY
RECORDS
MEDIA



Seimone Augustus

Augustus was the two-time NCAA National Player of the Year, receiving the Wade Trophy, the Naismith and the Wooden Awards as a junior and a senior. Augustus helped lead the Lady Tigers to three straight Final Fours and was the NCAA Regional MOP three times. She was the No. 1 draft pick in the 2006 WNBA draft.



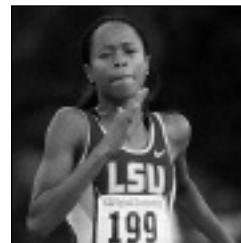
Temeka Johnson

The 2004-05 Lieberman Award winner as the nation's top point guard, Johnson led the Lady Tigers to back-to-back NCAA Final Fours, the 2004-05 SEC regular season title and the 2003 tournament title, and was the SEC's all-time assist leader, finishing her career fifth in NCAA history with 945.



Nicki Arnstad

The 2002 NCAA Floor Exercise Co-Champion, Arnstad became the first LSU gymnast to win a national title. She was a two-time All-American and won the NCAA Central Regional Floor and All-Around Championships.



Muna Lee

The most decorated track and field athlete in school history, Lee won 20 All-America awards and a school record seven national titles while helping the Lady Tigers to five NCAA team championships during her time at LSU. A 2004 Olympian, she finished seventh in the 200 meters at the Summer Games in Athens, Greece.



April Burkholder

The 2006 NCAA Balance Beam co-national champion. Completed her LSU career with 14 All-America honors and four All-SEC selections. In addition, she was named the NCAA Central Region Gymnast of the Year and SEC Gymnast of the Year twice (2004 and 2005) and was also the conference's Freshman of the Year in 2003.



Ben McDonald

Named the Golden Spikes National Player of the Year in 1989 and he was later the first player chosen in the Major League Baseball Draft by the Baltimore Orioles.



Xavier Carter

Carter won a school record-tying seven NCAA titles on the track and earned a total of 10 All-America honors. He became just the second athlete to win four titles at one national meet, joining Jesse Owens. Holds four individual school records and anchored LSU's 4x400-meter relay teams to two school records.



Britni Sneed

One of three four-time first-team All-SEC selections in conference history, Sneed was a two-time SEC Player of the Year and a three-time NFCA All-American, leading the Tigers to their first Women's College World Series appearance in 2001.



Walter Davis

An Olympian in 2000 and 2004, Davis helped LSU to national titles in 2001 and 2002. The SEC Male Athlete of the Year in 2002, he won six NCAA titles and earned nine All-America honors. A five-time USA triple jump champion, he is also the reigning World Indoor and Outdoor triple jump champion.



David Toms

The two-time SEC Player of the Year, Toms has gone on to a successful career on the PGA Tour. Among his PGA Tour victories was a thrilling win at the PGA Championship in August of 2001.



Meredith Duncan

The nation's top collegiate golfer in 2002, Duncan left LSU as the best female golfer in school history. She earned first-team All-America honors as a senior in 2002 and won the United States Women's Amateur Championship in 2001.



Todd Walker

Capped his LSU career as the SEC's all-time leader in hits, runs, RBIs, and total bases. Walker, who is a member of the All-Time College World Series Team, led LSU to the national title in 1993. Walker is currently a member of the San Diego Padres.



[INTRO](#)[THIS IS LSU](#)[TIGERS](#)[COACHES](#)[OPPONENTS](#)[REVIEW](#)[HISTORY](#)[RECORDS](#)[MEDIA](#)

Amenities

- ▶ 54,000 square feet of working space
- ▶ 75 computer workstations
- ▶ 14 private computer rooms in a state-of-the-art computer lab
- ▶ Additional study rooms and classrooms for private or group study
- ▶ Electronic scheduling of tutoring sessions
- ▶ A 1,000-seat auditorium for classes and lectures



Paramount to the success of the “student” half of the term student-athlete is providing LSU athletes with the best possible resources to excel in the classroom.

For more than 20 years, the LSU Academic Center for Student-Athletes has helped to build well-rounded student-athletes. But as times change and technology advances, the need for further improvements still exists. As a result, the Cox Communications Academic Center for Student-Athletes opened its doors in November of 2002. A \$15 million renovation to the Gym Armory not only made it among the nation’s premier centers, but put it at the forefront. Improvements to the existing center give LSU student-athletes the best opportunity for success by providing access to the latest technology, as well as an array of expanded services.

FACILITY BUILT BY THE TIGER ATHLETIC FOUNDATION



Critical to the development of an athlete as a student is an adequate academic facility and capable staff to further the athlete's progress. The Cox Communications Academic Center for Student-Athletes is responsible for overseeing the educational development and progress toward graduation for all student-athletes. The staff acts as a liaison between the student-athlete and the academic communities and insures that student-athletes comply with academic rules

established by the University, NCAA and Southeastern Conference. The staff also coordinates academic programs

designed to assist student-athletes in acquiring a quality education.



«««Lauren Cuyler Academic All-American

In 2002, Lauren Cuyler became LSU volleyball's first Academic All-American. A three-time SEC Academic Honor Roll selection, the New Orleans native graduated *magna cum laude* in the spring of 2002 and played out her senior season of eligibility while pursuing her graduate degree in LSU's prestigious Flores MBA program before earning her MBA in 2004. In addition, she was named the 2001 LSU Student-Athlete of the Year.

The Goal

For each student-athlete to reach and receive the highest-quality education and degree.

The Responsibility

To oversee the educational development and progress toward graduation for all student-athletes.

Tutoring	Career Counseling and Development	Comply with academic rules established by LSU, the NCAA and SEC	Time Management	Study Skills
----------	-----------------------------------	---	-----------------	--------------

ACADEMIC STAFF

ACADEMIC SUPPORT STAFF



Tomas Jimenez
Executive Director



Tommy Powell
Director



Dr. Mary Boudreaux
Associate Director



Tim Boyle
Associate Director



John Allen
Coordinator



Dr. Tommy Karam
Director/Communications Lab



Jennifer Timmer
Learning Specialist



Jeanne Hieronimus
Learning Specialist

TBA - Sr. Associate Director
TBA - Associate Director
TBA - Coordinator



- INTRO
- THIS IS LSU
- TIGERS
- COACHES
- OPPONENTS
- REVIEW
- HISTORY
- RECORDS
- MEDIA

The Community Service aspect does not only serve to enhance a student-athletes collegiate experience, but also serves to expand character. Players not only gain a strong sense of self-worth, but also experience personal satisfaction and growth from volunteering and community service activities. More important are the benefits that the community receives. It enables the community to gain an enormous advantage in feeling that they have a "partnership" with LSU student-athletes.

LSU student-athletes participate in a variety of community service projects including reading in schools, visiting nursing homes and hospital pediatric wards, speaking engagements and more in East Baton Rouge Parish.

LSU's student-athletes also served a vital role in the attempt to get the Gulf Coast on its feet after Hurricanes Katrina and Rita. Many of the volleyball players gave, time, energy and material things to those who suffered losses from the devastating storms.



Hurricane Relief

Many of the volleyball players volunteered their time when the Maravich Center, home of LSU volleyball, was activated as a Medical Triage Unit in the days after Hurricane Katrina hit the coast.



In the Community

Kyna Washington (top left) visits with children at the annual Halloween BOOzar, members of the volleyball team distribute candy at the BOOzar (top right); the team sponsored a family in the annual Christmas Toy Drive (bottom); which distributes presents to underprivileged children.

Extreme Makeover: Home Edition

In January, members of the LSU volleyball team volunteered as part of ABC's "Extreme Makeover: Home Edition" to help construct a new home for former Tiger standout Katie Kubena's relatives in East Bernard, Texas.



Shaquille O'Neal CHAMPS/Life Skills

ACADEMIC EXCELLENCE

ATHLETIC EXCELLENCE

CAREER DEVELOPMENT

PERSONAL DEVELOPMENT

COMMUNITY SERVICE

The CHAMPS/Life Skills program was developed by the NCAA to help prepare student-athletes for the challenges of life beyond the playing field. Through workshops, service projects, and social events, CHAMPS- an acronym for Challenging Athletes Minds for Personal Success- brings LSU student-athletes information that will prepare them for the biggest game of all - the game of life!



How Can CHAMPS Help?

By focusing on "real life" skills and personal development, the CHAMPS Program not only assists the student-athletes with meeting daily challenges, but also enhances student-athlete's growth in their college years and beyond.

CHAMPS at LSU

The CHAMPS/Life Skills program at LSU is operated out of the Academic Center for Athletes, and the focus of the program is on five commitments viewed as critical to personal growth.



Mike Mallet
Director for the
CHAMPS/Life Skills program



Jade Jenkins
Assistant Director for the
CHAMPS/Life Skills program

Mike's New Habitat



The new environment created for Mike is 15,000 square feet in size with lush planting, a large live oak tree, a beautiful waterfall and a stream evolving from a rocky backdrop overflowing with plants and trees. The habitat has, as a backdrop, an Italianate tower - a campanile - that creates a visual bridge to the Italianate architectural vernacular that is the underpinning of the image of the entire beautiful LSU campus. As part of the second phase of development, this spectacular new habitat will feature state-of-the-art technologies, research, conservation and husbandry programs, as well as educational, interpretive and recreational activities. It will, in essence, be one of the largest and finest Tiger habitats in the United States.

Mike V, the famed live Bengal tiger that serves as the graphic image of all LSU athletics teams, begins the 16th year of his reign on the LSU campus.

He proudly rules over a state-of-the-art 15,000 square foot domicile, just north of Tiger Stadium, which contains a beautiful waterfall, stream and swimming pool with plants and trees. In addition, there is an indoor area into which he can retreat to avoid inclement weather.

Mike's ride through Tiger Stadium before home games in a cage topped by the LSU cheerleaders is a school tradition. Before entering the stadium, his cage on wheels is parked next to the opponent's locker room in the southeast end of the stadium. Opposing players must make their way past Mike's cage to reach their locker room.

Tradition dictates that the Tigers will score a touchdown for every growl issued by Mike before a football game. For many years, Mike was prompted to roar by pounding on the cage. Objections of cruel punishment brought about the use of recorded growls to play to the crowd before the games. That practice was discontinued shortly afterward and, today, Mike participates in the pregame tradition without provocation.

The Tiger mascot stopped traveling regularly with the LSU team in 1970 when his cage overturned on Airline Highway in an accident en route to a game. Mike IV traveled four more times, though, as he appeared at a Mardi Gras parade in 1984, the 1985 Sugar Bowl, and LSU's basketball games in the Superdome.

Mike V made his first road trip in December 1991 to the Louisiana Superdome to witness Shaquille O'Neal and LSU defeat Texas, 84-83.

In the mid-1980's, pranksters cut the locks on Mike IV's cage and freed him in the early-morning hours just days before the annual LSU-Tulane clash. Mike roamed free, playfully knocking down several small pine trees in the area, before being trapped in the Bernie Moore Track Stadium where police used tranquilizer guns to capture and return the Bengal Tiger to his home.

The incident was reminiscent of a kidnapping of Mike I many years ago by Tulane students before a Tiger-Green Wave battle.



Trainer and namesake Mike Chambers with Mike I housed in City Park Zoo.

INTRO

THIS IS LSU

TIGERS

COACHES

OPPONENTS

REVIEW

HISTORY

RECORDS

MEDIA



1936-1956

Mike I

The original Mike was purchased from the Little Rock Zoo in 1936 for \$750, with money contributed by the student body. Originally known as "Sheik" at the time of his purchase, his name was changed to Mike to honor Mike Chambers who served as LSU's athletic trainer when the first mascot was purchased. Chambers played football at Illinois where he blocked for the legendary Red Grange. The first Mike was housed in the Baton Rouge Zoo for one year before a permanent home was constructed near Tiger Stadium. Mike I reigned for 20 years before dying of pneumonia in the midst of a six-game LSU football losing streak in 1957. Fearing the LSU faithful would give up hope upon the death of the mascot, Mike's death was not made public until the Tigers ended the losing streak.



1956-1958

Mike II

The second Mike served a brief reign, lasting only through the 1957 season before dying of pneumonia in the spring of 1958. He was born at the Audubon Zoo in New Orleans and came to LSU on Sept. 28, 1956. The young tiger was held overnight in Tiger Stadium and unveiled Sept. 29, the opening day of the football season.



1958-1976

Mike III

Just in time for the 1958 national championship season, Mike III was purchased from the Woodland Park Zoo in Seattle, Wash., following a national search by then-athletic director Jim Corbett. The student body contributed \$1,500 for the purchase of the tiger. Mike III served as mascot for 18 seasons, dying after the only losing season of his reign, as LSU posted a 5-6 record in 1975.



1976-1990

Mike IV

Mike IV reigned over Tiger athletics for 14 years after being donated to the school by August A. Busch III from the Dark Continent Amusement Park in Tampa, Fla., on Aug. 29, 1976. Born on May 15, 1974, Mike's age and health were determining factors in his retirement to the Baton Rouge Zoo in 1990. The centerpiece of the Zoo's cat exhibit, Mike weighed in at 500 pounds. His only hiatus from the LSU campus before 1990 was the summer of 1981 which he spent at the Little Rock Zoo while his cage was being expanded. Ironically, the Little Rock Zoo was the birthplace of the first Mike the Tiger. Mike IV died of old age in March of 1995 at the age of 21.



1990-present

Mike V

The newest tiger mascot was donated by Dr. Thomas and Caroline Atchison of the Animal House Zoological Park in Moulton, Ala. Avid LSU supporter Charles Becker, a member of the LSU booster group the Tammany Tigers, put Dr. Sheldon Bivin of the LSU School of Veterinary Medicine in touch with the Atchisons. Bivin traveled to Alabama and brought the baby tiger back to Baton Rouge. Born Oct. 18, 1989, the new tiger was introduced to LSU fans at a basketball game against Alabama in February 1990. He officially began his reign on April 30, 1990, when he was moved into the tiger cage across from Tiger Stadium.





PETE MARAVICH ASSEMBLY CENTER



The Pete Maravich Assembly Center, which seats 13,425 people, is the largest volleyball venue in the Southeastern Conference. LSU has been able to use the PMAC as a great home court advantage since beginning play there in 1982. Three times in the last 20 years, LSU has put together undefeated seasons in the Assembly Center -- 1986, 1991 and 2005. In addition, the Tigers have produced home winning streaks of 37 and 30 matches and have not posted a losing home record since 1997. The PMAC has hosted six NCAA Volleyball Tournament matches, including the 1991 South Regional, which LSU won to advance to the Final Four.



MARAVICH CENTER





AUXILIARY GYM

AUXILIARY GYM

The LSU volleyball team has the luxury of its very own practice facility in the Pete Maravich Assembly Center. Located underground in the north portion of the arena, the auxiliary gym provides the Tigers with an area that can hold two volleyball courts side-by-side. The auxiliary gym is located just down the stairs from the LSU locker room.



Amenities

- ▶ Two full-size volleyball practice courts
- ▶ Video Room
- ▶ Large equipment room
- ▶ Scoreboard
- ▶ Located down the stairs from the volleyball locker room





LOCKER ROOM

The LSU locker room is located in the northwest corner of the Pete Maravich Assembly Center, directly between the playing floor of the PMAC and the auxiliary gym, which serves as the Tigers' practice facility. The locker room, a two-tiered facility which is equipped with a players lounge, was remodeled prior to the 2000 season and has locker space for each athlete.





LSU boasts the largest and most complete athletic training facility in all of collegiate athletics. Focused on aggressive rehabilitation, the Broussard Center for Athletic Training is furnished with the latest in technology and equipment. Some of the features of the 23,000-square foot facility include an on-site x-ray room, an in-house pharmacy, as well as state of the art hydrotherapy pools. The Broussard Center for Athletic Training is equipped with the largest hydrotherapy pools in both collegiate and professional sports and is one of the few collegiate training centers with a full-service pharmacy, as well as on-site x-ray room. LSU is also the only school in college athletics with a training room equipped with a full-service vision center. The facility is named in honor of legendary trainer Dr. Martin J. Broussard, who served as LSU's athletic trainer for several decades.

Amenities

- ▶ 23,000 square foot athletic training facility
- ▶ On-site x-ray room
- ▶ In-house full-service pharmacy
- ▶ In-house dental and vision centers
- ▶ A Hydrotherapy pool



FACILITY BUILT BY THE TIGER ATHLETIC FOUNDATION



INTRO

THIS IS LSU

TIGERS

COACHES

OPPONENTS

REVIEW

HISTORY

RECORDS

MEDIA



Amenities

- ▶ 28 multi-purpose power stations
- ▶ 36 assorted selectorized machines
- ▶ 10 dumbbell stations with 2 sets of 5-180 pound free weights
- ▶ Custom made equipment by Body Masters and Eleiko



The LSU strength and conditioning facility, located in Tiger Stadium, was built in 1997 and features the latest in both strength training and cardiovascular training equipment. Measuring 10,000-square feet, LSU has one of the finest strength and conditioning facilities in the nation.

The LSU strength and conditioning team took a new direction in 2000 under strength coach Tommy Moffitt, who was named the 1999 Collegiate Football Strength and Conditioning Coach of the Year by the Professional Football Strength and Conditioning Coaches Society.

Strength and conditioning can be the heart and soul of an athletic program's success, and LSU has taken great strides to improve its strength program and facilities.

FACILITY BUILT BY THE TIGER ATHLETIC FOUNDATION





The SKIP BERTMAN Legacy

Bertman's unyielding desire to succeed drove him to the pinnacle of his profession, and his astute knowledge of the game -- obtained from over 40 years of coaching -- combined with his steadfast determination and irrepressible enthusiasm transformed LSU Baseball into the nation's premier program.

National Championships

2000, 1997, 1996, 1993, 1991

SEC Championships

1997, 1996, 1993, 1992, 1991, 1990, 1986

Career Record (1984-2001)

870-330-3 (.724)

NCAA Tournament Record

89-29 (.754), highest winning percentage in NCAA history

National Coach of the Year

2000, 1997, 1996, 1993, 1991, 1986

College World Series Appearances

2000, 1998, 1997, 1996, 1994, 1993, 1991, 1990, 1989, 1987, 1986

Already a Louisiana Legend and one of the greatest college baseball coaches of all time, J. Stanley "Skip" Bertman has made the seamless transition into the athletics director's chair with the same enthusiasm, vision and demand for excellence that were trademarks of his stellar coaching career.

In just five years as LSU's director of athletics, Bertman has already added to his impressive list of on-the-field achievements. Under his direction, LSU enjoyed arguably the greatest athletics years in the history of the institution. In 2003-04, three teams won national championships, nine teams finished in the nation's top ten, and 14 teams ranked in the top 25, and in 2004-05, 14 teams advanced to the postseason. LSU teams also enjoyed improved grade point averages across the board, making the LSU student-athlete experience a success on and off the fields of competition.

While supervising the Tigers' progress on the playing fields, he has begun to implement measures necessary to realize his vision of building the LSU athletics department into the best in the country. Bertman's bold and innovative plans promise to keep the Tigers among the nation's elite in all phases of collegiate athletics.

Bertman is now in the midst of upgrading LSU's athletics complex. Working hand in hand with the Tiger Athletic Foundation, Bertman has already overseen the completion of the Cox Communications Academic Center for Student-Athletes while renovating Tiger Stadium and the Pete Maravich Assembly Center, and constructing the Football Operations Center.

It was also Bertman who took the bold but essential move to implement a seat contribution program in Tiger Stadium to fund facility improvements and ensure the financial stability of the LSU Athletics Department for the next decade.

Bertman was named LSU's athletics director on Jan. 19, 2001. With Bertman, LSU gained an athletics director who provides the leadership and experience necessary to manage the Tigers' \$52 million budget.

Bertman guided LSU to five NCAA baseball titles, and his teams drew huge crowds to venerable Alex Box Stadium, as the Tigers led the nation in attendance in each of his final six seasons (1996-2001).

He also served as head coach of the 1996 U.S. Olympic team that captured the bronze medal in Atlanta.

Bertman continues to be honored for his remarkable coaching tenure, as he was inducted in June, 2002, into the Louisiana Sports Hall of Fame. He was inducted into the American Baseball Coaches Association Hall of Fame in January, 2003. In 2006, he was one of 10 inaugural inductees into the College Baseball Hall of Fame in Lubbock, Texas.

In a Baseball America poll published in 1999, Bertman was voted the second greatest college baseball coach of the 20th century, trailing only the late Rod Dedeaux of Southern California. Bertman and Dedeaux are the only coaches to win five CWS titles.

He had previously earned recognition as one of the nation's brightest assistant coaches while at the University of Miami (Fla.) for eight seasons (1976-83). Before working at Miami, Bertman was renowned for his coaching excellence. In 11 seasons at Miami Beach High School, he directed the Hi-Tides to a state championship and two runners-up finishes and he was named Florida's Coach of the Year on three occasions.

In 1975, Bertman coached at Miami-Dade Downtown, leaving after one season to join legendary head coach Ron Fraser at Miami. The move was a homecoming of sorts, as Bertman spent his collegiate playing days with the Hurricanes as an outfielder and catcher from 1958-60. He earned his B.A. in health and physical education from Miami in 1961 and received his master's degree from UM in 1964.

Bertman and his wife Sandy are the parents of four daughters - Jan, Jodi, Lisa and Lori. The Bertmans have three grandchildren - Sophie Faith and Isaac Stanley, the children of Emile and Lori Bertman Guirard, and Samuel Aaron, the son of Drew and Lisa Pate.



INTRO

THIS IS LSU

TIGERS

COACHES

OPPONENTS

REVIEW

HISTORY

RECORDS

MEDIA



Dr. William L. Jenkins

President, LSU

Dr. William L. Jenkins is President of the Louisiana State University System, which includes ten institutions on 10 campuses in five cities as well as 10 public hospitals in 10 cities.

A native of South Africa, Dr. Jenkins received his professional veterinary medicine degree in 1958 and specialist credentials in 1968 from the University of Pretoria. In 1970 he received a Ph.D. degree from the University of Missouri in Columbia. After practicing veterinary medicine for four years, Dr. Jenkins joined the faculty at the University of Pretoria, advancing through the ranks to become professor and head of the Department of Veterinary Physiology, Pharmacology and Toxicology in 1971.

In 1978 Dr. Jenkins moved to the United States and joined the faculty in the Department of Veterinary Physiology and Pharmacology at Texas A&M University. In 1988 he was appointed dean of the LSU School of Veterinary Medicine, was named LSU's provost and vice chancellor for academic affairs in 1993, Chancellor of LSU in 1996, and President of the LSU System in 1999.

Dr. Jenkins has taught extensively at both the professional and graduate levels. He also has been active in continuing education and has delivered more than 200 lectures and addresses to diverse groups in both the United States and abroad. He has published more than 60 scientific articles and has contributed 15 chapters to various textbooks. He is co-author of a textbook on veterinary pharmacology.

Over the years President Jenkins has received numerous teaching and service awards and recognitions. He also has served on many boards and commissions at the local, regional, state, and national levels.



LSU Board of Supervisors



Dr. Jack A. Andonie
Metairie, La.
District 1



Marty J. Chabert
Chauvin, La.
District 3



Charles V. Cusimano
Metairie, La.
District 1



Dr. John George
Shreveport, La.
District 4



Hank Gowen, Jr.
New Orleans, La.
District 4



Hal Hinchliffe
Monroe, La.
District 5



Alan Kimble
Baton Rouge, La.
Member at Large



Louis Lambert
Prairieville, La.
District 6



Laura A. Leach
Lake Charles, La.
District 7



Ben W. Mount
Lake Charles, La.
Member at Large



Dorothy "Dottie" Reese
New Orleans, La.
District 2



James P. Roy
Lafayette, La.
District 7



Jerry E. Shea, Jr.
Chairman-Elect
New Iberia, La.
District 3



Charles S. Weems III
Alexandria, La.
District 5



Rod West
Chairman
New Orleans, La.
District 2



Connie Cooper
Alexandria, La.
Student Representative



Sean O'Keefe

Chancellor, LSU

The Honorable Sean O'Keefe assumed the office of Chancellor of Louisiana State University and A&M College on February 21, 2005. Prior to his appointment as LSU's seventh chancellor, O'Keefe established a distinguished career in higher education and United States government service.

Chancellor O'Keefe earned his Bachelor of Arts from Loyola University in New Orleans in 1977 and his Master of Public Administration from the Maxwell School of Syracuse University in 1978. He held an endowed chair at the Syracuse University Maxwell School of Citizenship and Public Affairs and served as the Director of National Security Studies, a partnership of Syracuse University and Johns Hopkins University for delivery of executive education programs. He was also Professor of Business Administration and Assistant to the Senior Vice President for Research and Dean of the Graduate School at the Pennsylvania State University.

He served on four separate occasions as a presidential appointee. Most recently, until February 2005, he served as the 10th Administrator of the National Aeronautics and Space Administration. O'Keefe joined President George W. Bush's Administration as Deputy Assistant to the President and as the Deputy Director of the Office of Management and Budget until December 2001.

Appointed Secretary of the Navy in July 1992 by President George Bush, O'Keefe served as Comptroller and Chief Financial Officer of the Department of Defense since 1989. Before joining then-Defense Secretary Dick Cheney's Pentagon management team in these capacities, he served on the United States Senate Committee on Appropriations staff for eight years and was Staff Director of the Defense Appropriations Subcommittee. His public service began in 1978 upon his selection as a Presidential Management Intern.

Chancellor Sean O'Keefe is a Fellow of the National

Academy of Public Administration, a Fellow of the International Academy of Astronautics, and member of the Naval Postgraduate School Board of Advisors. During his academic postings, he was a Visiting Scholar at the Wolfson College of the University of Cambridge in the United Kingdom, a member of the Naval Postgraduate School's civil-military relations seminar team, and conducted seminars for the Strategic Studies Group at Oxford University. He served on the national security panel to devise the 1988 Republican platform and was a member of the 1985 Kennedy School of Government program for national security executives at Harvard University.

In 1993, President Bush and Secretary Cheney presented him the Distinguished Public Service Award. He was the 1999 faculty recipient of the Syracuse University Chancellor's Award for Public Service; recipient of the Department of the Navy's Public Service Award in December 2000; and has been awarded five honorary doctorate degrees from several prestigious educational institutions. In 2003 and 2004, he was recognized and honored by the Irish American Magazine as one of the Top 100 Irish Americans.

He is the author of several journal articles and contributing author of *Keeping the Edge: Managing Defense for the Future* released in October 2000. In 1998, he co-authored *The Defense Industry in the Post-Cold War Era: Corporate Strategies and Public Policy Perspectives*.

He is married to Laura McCarthy O'Keefe, and they have three children - Lindsey, Jonathan, and Kevin.



Kenneth E. Carpenter, Faculty Athletics Representative

Kenneth E. Carpenter is in his third year as LSU's faculty representative in NCAA and Southeastern Conference matters.

Carpenter, a professor in the School of Architecture, has taught at LSU since 1986. He received his bachelor's degree in architecture from the University of Oklahoma in 1962 and his master's from the University of Minnesota in 1967. Before joining the LSU faculty, he served at Clemson University as associate professor of architecture from 1967-77; Ball State University, where he was professor and chairman of the Department of Architecture, 1977-81; and, Iowa State University, serving as

professor and chairman, Department of Architecture from 1981-86.

At LSU, he served as the dean of the College of Design from 1986-97; Interim Executive Director of International Programs from 1997-98; and Interim Dean of the College of Art and Design from 2001-02.

Carpenter is a member of Phi Kappa Phi, the American Institute of Architects, and the American Association of University Professors.



INTRO
THIS IS LSU
TIGERS
COACHES
OPPONENTS
REVIEW
HISTORY
RECORDS
MEDIA



SOUTHEASTERN CONFERENCE

The 2005 Tigers won a share of their first SEC Western Division Championship.

Year after year, the Southeastern Conference shows why it is considered to be one of the premier volleyball conferences in the nation. In the 1990's and continuing into the 2000's, the SEC made stellar contributions to the sport of volleyball.

The conference has sent at least two teams to the NCAA Tournament in every season for the last 15 years. The SEC has had a team reach the Final Four 10 of the last 16 seasons, with Tennessee advancing to the Final Four last season and Florida facing Southern California in the 2003 National Championship game.

In 2005, Florida competed in its 15th straight NCAA Tournament. A league-record six teams advanced to postseason play, including Alabama, Arkansas, Kentucky, LSU and Tennessee.

Since the inaugural SEC volleyball championship in 1979-80, many changes have occurred in the conference. The addition of Arkansas and South Carolina to the league in 1991 brought the divisional format to the sport with five teams competing in the Eastern Division and six teams in the Western Division. This season, the league will forego the three-day tournament and instead play a double round-robin regular season SEC schedule to determine the conference champion and who receives the automatic bid to the NCAA Tournament.

Along with the popularity growth throughout the country, women's volleyball has also grown in the SEC. A benchmark in that growth came in 1995 when SEC volleyball was first broadcast on SEC-TV on a tape-delay basis. For the past 11 seasons the coverage has grown, especially in the last six years, to live telecasts of several regular season matches. SEC volleyball will continue to enjoy live coverage on SEC-TV in 2006, reaching almost 22 million subscribers in the conference's nine-state region.

SEC Volleyball

A STANDARD OF EXCELLENCE

- ▶ The 2005 season marked the 16th consecutive year the SEC has placed at least two teams in the NCAA Tournament.
- ▶ A record-breaking six SEC teams earned berths in the NCAA Tournament, shattering the previous record of four teams.
- ▶ Nine of the 11 teams in the SEC posted wins in double-digits in 2005, with five posting 20+ wins. Florida led the way with an SEC-high 33 victories. Tennessee had 25 wins, while Alabama had 23 and LSU and Arkansas posted 21 victories on the season.
- ▶ Arkansas and LSU claimed a share of the Western Division crown in 2005, with Florida earning the Eastern Division championship.
- ▶ Florida captured its 12th SEC Tournament Championship and advanced to the NCAA quarterfinals.
- ▶ Tennessee made its eighth NCAA appearance and advanced to the NCAA Final Four before falling to eventual national champion Washington.
- ▶ Three players were named AVCA All-American and nine players were named to the AVCA Division I All-District Team.
- ▶ In the past 15 years, 837 student-athletes have earned selection to the SEC Academic Honor Roll.

