



*Skip Bertman presents Ben McDonald with a plaque commemorating his spectacular LSU career.*



*Skip Bertman joins the family of the late Robbie Smith in a 1999 pre-game ceremony honoring Robbie's achievements.*

## Header goes here



*Wally Pontiff, a two-time all-SEC selection, helped lead LSU to the 2000 NCAA championship.*

On February 13, 1999, Smith and McDonald were honored in a special Alex Box Stadium ceremony prior to the Tigers' game with Texas. Former LSU head coach Skip Bertman unveiled two insignias on the center field wall bearing each player's name beneath the No. 19 -- the jersey number worn by both McDonald and Smith during their LSU careers. McDonald and members of Smith's family joined Bertman on the field to take part in the ceremony.

McDonald, a 6-7 right-hander from Denham Springs, La., capped a magnificent 1989 season by receiving the Golden Spikes Award, given by the United States Baseball Federation to the nation's most outstanding amateur player. McDonald, who was also named National Player of the Year by *Baseball America*, *The Sporting News* and *Collegiate Baseball*, was the first player chosen in the free-agent amateur draft and made his major league debut with the Baltimore Orioles in September, 1989.

McDonald, who set an LSU career mark with 373 Ks, established Southeastern Conference standards for single-season strikeouts (202), innings pitched (152.1) and consecutive scoreless innings (44.2). A two-time All-American and a 1988 Olympic gold medalist, he finished his LSU career with a 29-14 record and a 3.24 ERA.

McDonald, who enjoyed an excellent 10-year major league career with the Orioles and Milwaukee Brewers, also lettered as an LSU basketball player. He was a member of

the 1986-87 Tiger hoops squad which advanced to the Elite Eight of the NCAA Tournament.

McDonald has volunteered his time to several philanthropic endeavors, including Special Olympics, Sojourner Truth House (prevention of domestic violence) and Child Abuse Prevention. He has also made significant financial contributions during his professional career to the LSU Scholarship Fund.

Smith, a trooper for the Florida Highway Patrol, was killed in Miami in July 1997, when a man slammed his car into the back of Smith's parked police cruiser. The 34-year-old Smith, was trapped inside his car, which exploded on impact on Interstate 95.

Smith, a four-year veteran of the Florida Highway Patrol, had served with the Tri-County DUI Task Force for the 18 months prior to his death. The federally funded program allows nine state troopers from Dade, Broward and Palm Beach counties to stop drunk drivers and bring them to jail. For four years, Smith had been a member of the "One Hundred Club," a group of troopers recognized by the Florida Highway Patrol and Mothers Against Drunk Driving for having arrested more than 100 drunk drivers annually.

Smith came to the LSU baseball program in the fall of 1983 as a transfer from Miami Dade South Junior College. He pitched for head coach Skip Bertman's first two LSU teams in 1984 and 1985, serving as the '85 team captain. Smith earned 1985 all-Southeastern Conference honors, posting a 6-1 record and a 3.83 ERA in 80 innings of work. He recorded 71 strikeouts and 35 walks in helping the '85 Tigers win the SEC Western Division and advance to an NCAA regional for the first time in 10 years.

Smith pitched in the Minnesota Twins organization from 1985 to 1989, and he earned his bachelor's degree from LSU in 1989.

Smith is survived by his wife Lisa; their twins, Todd Michael and Taylor Marie; his parents David and Brenda Smith; and his brother Danny Smith, a former Florida Highway Patrol trooper now employed by the Coral Gables (Fla.) Police Department. Danny Smith pitched at the University of Miami when Bertman worked as an assistant coach there.



Kurt Ainsworth

## First-Team All-Americans

### Allen Smith, LHP -- Maysville, Ky.

1961 First-Team All-American

Smith's LSU Career Statistics

YEAR	W-L	ERA	IP	H	R	ER	BB	SO
1960	5-5	2.31	70.1	55	27	18	21	46
1961	10-2	1.34	88.0	53	18	13	25	75
1962	7-2	1.93	79.0	59	30	17	27	54
<b>TOTAL</b>	<b>22-9</b>	<b>1.82</b>	<b>237.1</b>	<b>167</b>	<b>75</b>	<b>48</b>	<b>73</b>	<b>175</b>

### Mike Miley, INF -- Metairie, La.

1974 First-Team All-American

Miley's LSU Career Statistics

YEAR	G	AB	R	H	AVG.	2B	3B	HR	RBI	BB	SO	SB
1972	39	120	27	40	.333	7	1	8	31	22	16	3
1973	31	99	22	27	.273	4	2	2	11	21	28	3
1974	35	102	19	28	.275	6	4	3	16	24	13	5
<b>TOTAL</b>	<b>105</b>	<b>321</b>	<b>68</b>	<b>95</b>	<b>.280</b>	<b>17</b>	<b>7</b>	<b>13</b>	<b>58</b>	<b>67</b>	<b>57</b>	<b>11</b>

### Ben McDonald, RHP -- Denham Springs, La.

1988 & 1989 First-Team All-American • 1989 Golden Spikes Award Recipient

McDonald's LSU Career Statistics

YEAR	G-GS	W-L	ERA	SV	CG	SHO	IP	H	R	ER	BB	SO
1987	14-4	2-3	4.06	1	0	0	37.2	43	19	17	4	27
1988	22-14	13-7	2.65	1	10	0	118.2	96	46	35	27	144
1989	26-21	14-4	3.49	4	8	3	152.1	124	68	59	40	202
<b>TOTAL</b>	<b>62-39</b>	<b>29-14</b>	<b>3.24</b>	<b>6</b>	<b>18</b>	<b>3</b>	<b>308.2</b>	<b>263</b>	<b>133</b>	<b>111</b>	<b>71</b>	<b>373</b>

### Wes Grisham, OF -- Norman, Okla.

1990 First-Team All-American

Grisham's LSU Career Statistics

YEAR	G	AB	R	H	AVG.	2B	3B	HR	RBI	BB	SO	SB
1989	72	291	68	106	.364	26	6	19	85	31	44	11
1990	73	278	65	100	.360	18	4	11	72	34	41	5
<b>TOTAL</b>	<b>145</b>	<b>569</b>	<b>133</b>	<b>206</b>	<b>.362</b>	<b>44</b>	<b>10</b>	<b>30</b>	<b>157</b>	<b>65</b>	<b>85</b>	<b>16</b>

### Lloyd Peever, RHP -- Stonewall, Okla.

1992 First-Team All-American • 1992 Collegiate Baseball National Player of the Year

Peever's LSU Career Statistics

YEAR	G-GS	W-L	ERA	SV	CG	SHO	IP	H	R	ER	BB	SO
1992	17-15	14-0	1.98	0	3	1	104.2	67	25	23	20	116

### Todd Walker, 2B -- Bossier City, La.

1993 & 1994 First-Team All-American • 1993 College World Series Most Outstanding Player

1992 National Freshman of the Year • All-Time College World Series Team

Walker's LSU Career Statistics

YEAR	AB	R	H	RBI	AVG.	2B	3B	HR	TB	SPCT.	BB	SO	SB
1992	250	72	100	76	.400	21	3	12	163	.652	38	28	18
1993	276	85	109	102	.395	17	11	22	214	.775	49	35	14
1994	257	77	101	68	.393	23	1	18	180	.700	52	28	19
<b>TOTAL</b>	<b>783</b>	<b>234</b>	<b>310</b>	<b>246</b>	<b>.396</b>	<b>61</b>	<b>15</b>	<b>52</b>	<b>557</b>	<b>.711</b>	<b>139</b>	<b>91</b>	<b>51</b>

### Brett Laxton, RHP -- Audubon, N.J.

1993 First-Team All-American • 1993 National Freshman of the Year

Laxton's LSU Career Statistics

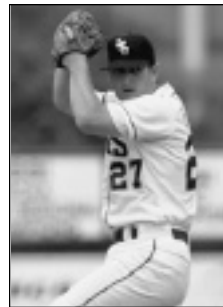
YEAR	G-GS	W-L	ERA	SV	CG	SHO	IP	H	R	ER	BB	SO
1993	19-17	12-1	1.98	0	5	1	109	67	32	24	47	98
1994	14-14	4-5	4.36	0	1	0	66	63	46	32	38	54
1995	13-13	4-4	4.37	0	0	0	68	65	44	33	42	65
1996	14-12	8-2	3.54	0	0	0	56	50	29	22	28	55
<b>TOTAL</b>	<b>60-56</b>	<b>28-12</b>	<b>3.34</b>	<b>0</b>	<b>6</b>	<b>1</b>	<b>299</b>	<b>245</b>	<b>151</b>	<b>111</b>	<b>155</b>	<b>272</b>



Mike Miley



Allen Smith



Lloyd Peever



Russ Johnson



Todd Walker



Ben McDonald

**Russ Johnson,SS -- Denham Springs,La.**

1994 First-Team All-American • 1994 SEC Player of the Year

**Johnson's LSU Career Statistics**

YEAR	G	AB	R	H	AVG.	2B	3B	HR	RBI	BB	SO	SB
1992	63	240	61	81	.338	16	3	7	49	29	35	16
1993	71	259	83	92	.355	18	3	8	58	67	24	19
1994	66	234	72	96	.410	26	4	17	74	67	25	26
<b>TOTAL</b>	<b>200</b>	<b>733</b>	<b>216</b>	<b>269</b>	<b>.367</b>	<b>60</b>	<b>10</b>	<b>32</b>	<b>181</b>	<b>163</b>	<b>84</b>	<b>61</b>

**Scott Schultz,RHP -- Sterling, Va.**

1995 First-Team All-American

**Schultz' LSU Career Statistics**

YEAR	G-GS	W-L	ERA	SV	CG	SHO	IP	H	R	ER	BB	SO
1992	21-10	8-3	2.90	0	3	1	93.1	80	32	31	29	76
1993	23-12	7-3	4.91	3	0	0	66.0	76	43	36	33	52
1994	19-17	12-2	3.26	1	4	1	118.2	112	60	43	29	131
1995	16-15	11-4	3.46	0	6	0	117.0	97	49	45	27	150
<b>TOTAL</b>	<b>79-54</b>	<b>38-12</b>	<b>3.51</b>	<b>4</b>	<b>13</b>	<b>2</b>	<b>398.0</b>	<b>365</b>	<b>184</b>	<b>155</b>	<b>118</b>	<b>409</b>

**Eddie Yarnall,LHP -- Coral Springs,Fla.**

1996 First-Team All-American

**Yarnall's LSU Career Statistics**

YEAR	G-GS	W-L	ERA	SV	CG	SHO	IP	H	R	ER	BB	SO
1994	5-5	0-0	10.95	0	0	0	12.1	12	16	15	10	17
1995	16-10	5-0	3.45	0	1	0	60	46	29	23	36	87
1996	19-17	11-1	2.38	0	3	0	124.2	89	37	33	52	156
<b>TOTAL</b>	<b>40-32</b>	<b>16-1</b>	<b>3.24</b>	<b>0</b>	<b>4</b>	<b>0</b>	<b>197</b>	<b>147</b>	<b>82</b>	<b>71</b>	<b>98</b>	<b>260</b>

**Eddy Furniss,1B -- Nacogdoches, Texas**

1996 & 1998 First-Team All-American • 1998 Dick Howser Award Recipient

1996 SEC Player of the Year

**Furniss' LSU Career Statistics**

YEAR	AVG.	G	AB	R	H	2B	3B	HR	RBI	BB	SO	SB-A
1995	.326	62	215	30	70	14	1	9	52	15	44	2-2
1996	.374	66	238	69	89	21	1	26	103	46	43	1-2
1997	.378	70	259	77	98	25	0	17	77	58	56	0-3
1998	.403	67	236	85	95	27	3	28	76	72	40	0-3
<b>TOTAL</b>	<b>.371</b>	<b>265</b>	<b>948</b>	<b>261</b>	<b>352</b>	<b>87</b>	<b>5</b>	<b>80</b>	<b>308</b>	<b>191</b>	<b>183</b>	<b>3-10</b>

**Patrick Coogan,RHP -- Baton Rouge,La.**

1997 First-Team All-American

**Coogan's LSU Career Statistics**

YEAR	G-GS	W-L	ERA	SV	CG	SHO	IP	H	R	ER	BB	SO
1995	8-2	2-0	3.72	0	0	0	19.1	15	9	8	3	27
1996	26-10	6-0	4.13	1	0	0	80.2	88	48	37	28	95
1997	25-17	14-3	4.46	3	3	0	125	114	69	62	36	144
<b>TOTAL</b>	<b>59-29</b>	<b>22-3</b>	<b>4.28</b>	<b>4</b>	<b>3</b>	<b>0</b>	<b>225</b>	<b>217</b>	<b>126</b>	<b>107</b>	<b>67</b>	<b>266</b>

**Brandon Larson,SS -- San Antonio, Texas**

1997 First-Team All-American

1997 College World Series Most Outstanding Player

**Larson's LSU Career Statistics**

YEAR	G	AB	R	H	AVG.	2B	3B	HR	RBI	BB	SO	SB
1997	69	289	82	110	.381	16	2	40	118	21	57	9

**Brad Cresse,C -- Seal Beach,Calif.**

1998 & 2000 First-Team All-American • 2000 Johnny Bench Award Recipient

**Cresse's LSU Career Statistics**

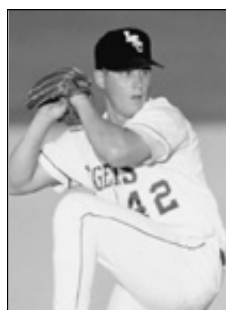
YEAR	G	AB	R	H	AVG.	2B	3B	HR	RBI	BB	SO	SB
1997	45	122	25	27	.221	4	0	9	22	9	49	0
1998	63	232	55	75	.323	13	0	29	90	32	66	0
1999	59	215	52	65	.302	11	0	10	39	26	47	2
2000	69	273	73	106	.388	21	0	30	106	39	51	1
<b>TOTAL</b>	<b>236</b>	<b>842</b>	<b>205</b>	<b>273</b>	<b>.324</b>	<b>49</b>	<b>0</b>	<b>78</b>	<b>257</b>	<b>106</b>	<b>213</b>	<b>3</b>

**Kurt Ainsworth,RHP -- Baton Rouge,La.**

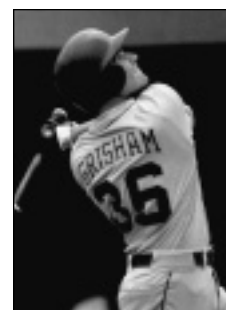
1999 First-Team All-American • 2000 Olympic Gold Medalist

**Ainsworth's LSU Career Statistics**

YEAR	G-GS	W-L	ERA	SV	CG	SHO	IP	H	R	ER	BB	SO
1998	6-0	0-0	4.50	0	0	0	8.0	10	5	4	7	14
1999	22-19	13-6	3.45	1	5	2	130.1	114	65	50	48	157
<b>TOTAL</b>	<b>28-19</b>	<b>13-6</b>	<b>3.51</b>	<b>1</b>	<b>5</b>	<b>2</b>	<b>138.1</b>	<b>124</b>	<b>70</b>	<b>54</b>	<b>55</b>	<b>171</b>



Scott Schultz



Wes Grisham



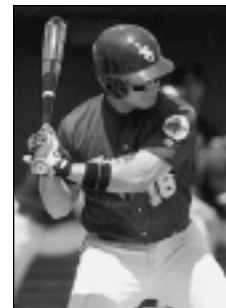
Eddie Yarnall



Brett Laxton



Patrick Coogan



Brandon Larson



Eddy Furniss



Brad Cresse



Todd Walker



Jeff Reboulet

Forty-four former LSU players have reached the major leagues, including 30 Tigers since 1985. Head coach Smoke Laval tutored 24 future major leaguers during his tenure as an LSU assistant coach from 1984-93.

## Tigers in the Major Leagues

Below is a complete listing of Tigers in the Major Leagues, spanning every era of LSU's 110-year baseball history.



Kurt Ainsworth



Albert Belle



Jim Bowie



Paul Byrd



Rick Greene



Mark Guthrie

### Joe Bill Adcock,OF

Coushatta, La.  
LSU: 1947

*Player*

Cincinnati Reds: 1950-52  
Milwaukee Braves: 1953-62  
Cleveland Indians: 1963  
Los Angeles Angels: 1964  
Cleveland Indians: 1965-66

*Manager*

Cleveland Indians: 1967

### Kurt Ainsworth,RHP

Baton Rouge, La.  
LSU: 1997-99  
San Francisco Giants: 2001-02

### A.W. Baird,INF

Cleburne, Texas  
LSU: 1916  
New York Giants: 1917,1919

### Albert Belle,OF

Shreveport, La.  
LSU: 1985-87  
Cleveland Indians: 1989-96  
Chicago White Sox: 1997-98  
Baltimore Orioles: 1999-2000

### Buddy Blair,3B

Columbia, Miss.  
LSU: 1933-34,1936  
Philadelphia Athletics: 1942

### Jim Bowie,1B

Fairfield, Calif.  
LSU: 1986  
Oakland Athletics: 1994-95

### Paul Byrd,RHP

Louisville, Ky.  
LSU: 1989-91  
New York Mets: 1995-96  
Atlanta Braves: 1997-98  
Philadelphia Phillies: 1998-2001  
Kansas City Royals: 2001-02

### Walker Cress, P

Ben Hur, Va.  
LSU: 1938-39  
Cincinnati Reds: 1948-49

### Alvin Dark,INF/OF/P

Commanche, Okla.  
LSU: 1943

*Player*

Boston Braves: 1946,1948-49  
New York Giants: 1950-56  
St. Louis Cardinals: 1956-58  
Chicago Cubs: 1958-59  
Philadelphia Phillies: 1960  
Milwaukee Braves: 1960

*Manager*

San Francisco Giants: 1961-64  
Kansas City Athletics: 1966-67  
Cleveland Indians: 1968-71

Oakland Athletics: 1974-75  
San Diego Padres: 1977

### John Fetzer, P

Baton Rouge, La.  
LSU: 1944  
Boston Braves: 1948

### Mark Freeman, P

Memphis, Tenn.  
LSU: 1949-51  
Kansas City Athletics  
New York Yankees  
Chicago Cubs

### Rick Greene,RHP

Miami, Fla.  
LSU: 1990-92  
Cincinnati Reds: 1999  
Minnesota Twins: 2000

### Mark Guthrie,LHP

Venice, Fla.  
LSU: 1984-87  
Minnesota Twins: 1989-95  
Los Angeles Dodgers: 1995-98  
Boston Red Sox: 1999  
Chicago Cubs: 1999-2000  
Tampa Bay Devil Rays: 2000  
Toronto Blue Jays: 2000  
Oakland Athletics: 2001  
New York Mets: 2002

### Eric Hetzel,RHP

Crowley, La.  
LSU: 1985  
Boston Red Sox: 1989-90  
Baltimore Orioles: 1991

### Trey Hodges,RHP

Spring, Texas  
LSU: 1999-2000  
Atlanta Braves: 2002

### Roland B. Howell, P

Napoleonville, La.  
LSU: 1910-12  
St. Louis Cardinals: 1912

### Russ Johnson,SS

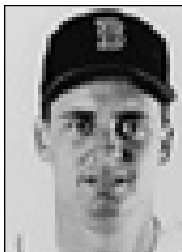
Denham Springs, La.  
LSU: 1992-94  
Houston Astros: 1997-2000  
Tampa Bay Devil Rays: 2000-02

### Randy Keisler, LHP

Richards, Texas  
LSU: 1998  
New York Yankees: 2000-01

### Brandon Larson,INF

San Antonio, Texas  
LSU: 1997  
Cincinnati Reds: 2001-02



Eric Hetzel



Trey Hodges



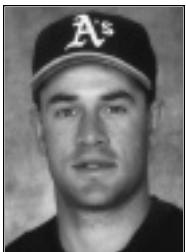
Russ Johnson



Randy Keisler



Brandon Larson



Brett Laxton



*Curtis Leskanic*



*Ben McDonald*



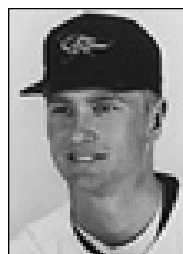
*Barry Manuel*



*Warren Morris*



*Lyle Mouton*



*John O'Donoghue*

**Brett Laxton,RHP**

Audubon,N.J.  
 LSU: 1993-96  
 Oakland Athletics: 1999  
 Kansas City Royals: 2000

**Curtis Leskanic,RHP**

Munhall, Pa.  
 Colorado Rockies: 1993-99  
 Milwaukee Brewers: 2000-01

**Dave Madison, P**

Brooksville, Miss.  
 LSU: 1941,1943  
 New York Giants: 1950  
 St.Louis Cardinals: 1952  
 Detroit Tigers: 1952-53

**Barry Manuel,RHP**

Mamou, La.  
 LSU: 1985-87  
 Texas Rangers: 1991-93  
 Baltimore Orioles: 1994  
 Montreal Expos: 1995-96  
 New York Mets: 1997  
 Arizona Diamondbacks: 1998

**Ben McDonald,RHP**

Denham Springs, La.  
 LSU: 1987-89  
 Baltimore Orioles: 1989-95  
 Milwaukee Brewers: 1996-97

**Mike Miley, SS**

Metairie, La.  
 LSU: 1972-74  
 California Angels: 1975-76

**Joe Moock,3B**

Plaquemine, La.  
 LSU: 1964  
 New York Mets: 1967

**Warren Morris,INF**

Alexandria, La.  
 LSU: 1993-96  
 Pittsburgh Pirates: 1999-2001  
 Minnesota Twins: 2002

**Lyle Mouton,OF**

Lafayette, La.  
 LSU: 1990-91  
 Chicago White Sox: 1995-97  
 Baltimore Orioles: 1998  
 Milwaukee Brewers: 1999-2000  
 Florida Marlins: 2001

**John O'Donoghue,LHP**

Elkton, Md.  
 LSU: 1988-90  
 Baltimore Orioles: 1993-94  
 Los Angeles Dodgers: 1994-96

**Chad Ogea,RHP**

Lake Charles, La.  
 LSU: 1989-91  
 Cleveland Indians: 1994-98  
 Philadelphia Phillies: 1999  
 Tampa Devil Rays: 1999-2000

**Keith Osik, C**

Wading River, N.Y.  
 LSU: 1988-90  
 Pittsburgh Pirates: 1996-2002

**Clay Parker, RHP**

Grayson, La.  
 LSU: 1982-85  
 Seattle Mariners: 1987  
 New York Yankees: 1988-89  
 Detroit Tigers: 1990-91  
 Oakland Athletics: 1991

**Jeff Reboulet,INF**

Kettering, Ohio  
 LSU: 1985-86  
 Minnesota Twins: 1992-96  
 Baltimore Orioles: 1997-99  
 Kansas City Royals: 2000  
 Los Angeles Dodgers: 2001-02

**Armando Rios,OF**

Carolina, Puerto Rico  
 LSU: 1991-93  
 San Francisco Giants: 1998-2001  
 Pittsburgh Pirates: 2001-02

**Connie Ryan,INF**

New Orleans, La.  
 LSU: 1941  
 New York Giants: 1942  
 Boston Braves: 1943-50  
 Cincinnati Reds: 1950-51  
 Philadelphia Phillies: 1952-53  
 Cincinnati Reds: 1953-54

**Andy Sheets,INF**

St. Amant, La.  
 LSU: 1991-92  
 Seattle Mariners: 1996-97  
 San Diego Padres: 1998  
 Anaheim Angels: 1999  
 Boston Red Sox: 2000  
 Tampa Bay Devil Rays: 2001-02

**Mike Sirotko,LHP**

Houston, Texas  
 LSU: 1990-93  
 Chicago White Sox: 1995-2000

**Russ Springer, RHP**

Pollock, La.  
 LSU: 1987-89  
 New York Yankees: 1992  
 California Angels: 1993-95

Philadelphia Phillies: 1995-96  
 Houston Astros: 1997  
 Arizona Diamondbacks: 1998  
 Atlanta Braves: 1998-99  
 Arizona Diamondbacks: 2000-01

**Art Swanson, P**

Baton Rouge, La.  
 LSU: 1954  
 Pittsburgh Pirates: 1955-57

**Brian Tallet,LHP**

Bethany, Okla.  
 LSU: 1998-2000  
 Cleveland Indians: 2002

**Jack Voigt,OF**

Venice, Fla.  
 LSU: 1985-87  
 Baltimore Orioles: 1992-95  
 Texas Rangers: 1995-96  
 Milwaukee Brewers: 1997  
 Texas Rangers: 1998  
 Oakland Athletics: 1998

**Todd Walker, INF**

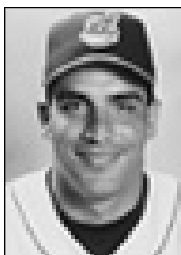
Bossier City, La.  
 LSU: 1992-94  
 Minnesota Twins: 1996-2000  
 Colorado Rockies: 2000-01  
 Cincinnati Reds: 2001-02

**Randy Wiles,LHP**

New Orleans, La.  
 LSU: 1970-73  
 Chicago White Sox: 1977

**Eddie Yarnall,LHP**

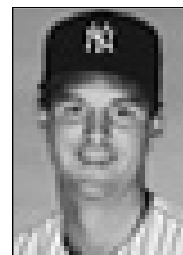
Coral Springs, Fla.  
 LSU: 1994-96  
 New York Yankees: 1999-2000  
 Cincinnati Reds: 2000-01



*Chad Ogea*



*Keith Osik*



*Clay Parker*



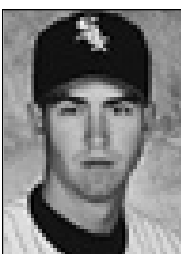
*Jeff Reboulet*



*Armando Rios*



*Andy Sheets*



*Mike Sirotko*



*Russ Springer*



*Brian Tallet*



*Jack Voigt*



*Todd Walker*



*Eddie Yarnall*

# LSU Statistics of MLB Players (1985-2002)

## Eric Hetzel,RHP

YEAR	A	GS	CG	W	L	ERA	IP	H	R	ER	BB	SO	HB	WP	BK	SHO	SV
1985	23	17	2	10	4	3.77	105	86	53	44	60	99	2	8	1	0	0

## Clay Parker, RHP

YEAR	A	GS	CG	W	L	ERA	IP	H	R	ER	BB	SO	HB	WP	BK	SHO	SV
1982	18	9	4	4	4	4.96	65.3	61	50	36	50	42	1	4	-	1	-
1983	13	8	1	0	5	8.20	45	58	48	41	35	40	3	1	-	0	-
1984	21	13	4	7	5	4.04	91.3	95	56	41	30	67	2	6	-	0	-
1985	21	15	4	8	2	4.13	94.3	99	54	43	34	98	5	9	1	1	1
<b>TOTALS</b>	<b>73</b>	<b>45</b>	<b>13</b>	<b>19</b>	<b>16</b>	<b>4.90</b>	<b>296</b>	<b>313</b>	<b>208</b>	<b>161</b>	<b>149</b>	<b>247</b>	<b>11</b>	<b>20</b>	<b>1</b>	<b>2</b>	<b>1</b>

## Jeff Reboulet,IF

YEAR	AB	R	H	RBI	AVG.	2B	3B	HR	TB	SPCT.	BB	SO	SB
1985	211	58	65	33	.308	11	2	5	95	.450	46	33	34
1986	254	63	74	38	.291	19	4	2	107	.421	47	29	24
<b>TOTALS</b>	<b>465</b>	<b>121</b>	<b>139</b>	<b>71</b>	<b>.299</b>	<b>30</b>	<b>6</b>	<b>7</b>	<b>202</b>	<b>.434</b>	<b>93</b>	<b>62</b>	<b>58</b>

## Albert Belle,OF

YEAR	AB	R	H	RBI	AVG.	2B	3B	HR	TB	SPCT.	BB	SO	SB
1985	150	32	41	40	.273	9	3	7	76	.507	20	35	2
1986	243	63	86	66	.354	13	5	21	172	.708	40	55	17
1987	192	62	67	66	.349	8	3	21	144	.750	49	50	19
<b>TOTALS</b>	<b>585</b>	<b>157</b>	<b>194</b>	<b>172</b>	<b>.332</b>	<b>32</b>	<b>11</b>	<b>49</b>	<b>392</b>	<b>.670</b>	<b>109</b>	<b>140</b>	<b>38</b>

## Russ Springer, RHP

YEAR	G-GS	W-L	ERA	SV	CG	SHO	IP	H	R	ER	BB	SO
1987	14-6	3-0	4.43	0	0	0	42.7	33	28	21	28	68
1988	21-15	7-7	2.95	4	4	0	119	98	48	39	73	156
1989	21-14	9-3	3.49	2	1	0	90.3	75	43	35	40	89
<b>TOTALS</b>	<b>56-35</b>	<b>19-10</b>	<b>3.39</b>	<b>6</b>	<b>5</b>	<b>0</b>	<b>252</b>	<b>206</b>	<b>119</b>	<b>95</b>	<b>141</b>	<b>313</b>

## Mark Guthrie,LHP

YEAR	G-GS	CG	W-L	ERA	IP	H	R	ER	BB	SO	HB	WP	SHO	SV
1984	10-3	1	3-0	2.00	36	27	15	8	18	46	0	2	0	1
1985	26-8	0	6-8	3.39	77.3	72	37	29	32	76	0	4	0	3
1986	25-22	4	9-2	4.24	123.3	121	70	58	59	122	3	7	1	3
1987	21-14	1	8-4	2.61	82.7	63	38	24	28	69	5	4	0	0
<b>TOTALS</b>	<b>82-47</b>	<b>6</b>	<b>26-14</b>	<b>3.35</b>	<b>319.3</b>	<b>283</b>	<b>160</b>	<b>119</b>	<b>137</b>	<b>313</b>	<b>8</b>	<b>17</b>	<b>1</b>	<b>7</b>

## Ben McDonald,RHP

YEAR	G-GS	W-L	ERA	SV	CG	SHO	IP	H	R	ER	BB	SO
1987	14-4	2-3	4.06	1	0	0	37.7	43	19	17	4	27
1988	22-14	13-7	2.65	1	10	0	118.7	96	46	35	27	144
1989	26-21	14-4	3.49	4	8	3	152.3	124	68	59	40	202
<b>TOTALS</b>	<b>62-39</b>	<b>29-14</b>	<b>3.24</b>	<b>6</b>	<b>18</b>	<b>3</b>	<b>308.7</b>	<b>263</b>	<b>133</b>	<b>111</b>	<b>71</b>	<b>373</b>

## Barry Manuel,RHP

YEAR	G-GS	W-L	ERA	SV	CG	SHO	IP	H	R	ER	BB	SO
1985	1-0	0-0	0.00	0	0	0	2.0	0	0	0	5	2
1986	41-0	10-3	2.37	9	0	0	72.7	41	23	19	46	91
1987	32-0	5-2	2.83	9	0	0	60.3	39	23	19	43	72
<b>TOTALS</b>	<b>74-0</b>	<b>15-5</b>	<b>2.53</b>	<b>18</b>	<b>0</b>	<b>0</b>	<b>135.0</b>	<b>80</b>	<b>46</b>	<b>38</b>	<b>94</b>	<b>165</b>

## Jack Voigt,OF

YEAR	AB	R	H	RBI	AVG.	2B	3B	HR	TB	SPCT.	BB	SO	SB
1985	8	2	2	3	.250	0	0	0	2	.250	1	3	0
1986	128	28	37	32	.289	8	0	9	72	.563	28	28	6
1987	248	63	73	61	.294	12	3	16	139	.560	42	62	12
<b>TOTALS</b>	<b>384</b>	<b>93</b>	<b>112</b>	<b>96</b>	<b>.292</b>	<b>20</b>	<b>3</b>	<b>25</b>	<b>213</b>	<b>.555</b>	<b>71</b>	<b>93</b>	<b>18</b>

## Curtis Leskanic,RHP

YEAR	G-GS	W-L	ERA	SV	CG	SHO	IP	H	R	ER	BB	SO
1988	2-0	0-0	0.00	0	0	0	1.3	1	0	0	1	2
1989	29-15	15-2	3.19	3	1	0	115.7	102	54	41	51	120
<b>TOTALS</b>	<b>31-15</b>	<b>15-2</b>	<b>3.15</b>	<b>3</b>	<b>1</b>	<b>0</b>	<b>117.0</b>	<b>103</b>	<b>54</b>	<b>41</b>	<b>52</b>	<b>122</b>

## John O'Donoghue,LHP

YEAR	G-GS	W-L	ERA	SV	CG	SHO	IP	H	R	ER	BB	SO
1988	10-2	1-0	3.78	3	0	0	16.7	12	13	7	23	21
1989	12-6	3-1	4.99	1	0	0	30.7	34	23	17	27	32
1990	20-18	12-3	2.88	0	2	1	109.3	118	46	35	27	85
<b>TOTALS</b>	<b>42-26</b>	<b>16-4</b>	<b>3.39</b>	<b>4</b>	<b>2</b>	<b>1</b>	<b>156.7</b>	<b>164</b>	<b>82</b>	<b>59</b>	<b>77</b>	<b>138</b>

## Chad Ogea,RHP

YEAR	G-GS	W-L	ERA	SV	CG	SHO	IP	H	R	ER	BB	SO
1989	16-2	2-0	2.56	0	0	0	31.7	19	11	9	15	33
1990	23-20	14-2	3.62	0	5	0	131.7	100	64	53	44	123
1991	25-20	14-5	3.08	1	1	0	131.3	117	59	45	48	140
<b>TOTALS</b>	<b>64-42</b>	<b>30-7</b>	<b>3.27</b>	<b>1</b>	<b>6</b>	<b>0</b>	<b>294.7</b>	<b>236</b>	<b>134</b>	<b>107</b>	<b>107</b>	<b>296</b>

## Jim Bowie,1B

YEAR	AB	R	H	RBI	AVG.	2B	3B	HR	TB	SPCT.	BB	SO	SB
1986	244	63	88	62	.361	18	2	16	158	.648	40	28	7

## Mike Sirotko,LHP

YEAR	G-GS	W-L	ERA	SV	CG	SHO	IP	H	R	ER	BB	SO
1990	21-1	1-2	3.12	1	0	0	49.0	51	22	17	24	53
1991	31-1	11-0	2.80	1	2	1	99.7	86	41	31	43	96
1992	22-10	6-3	4.48	2	0	0	78.3	77	50	39	26	72
1993	13-16	12-6	1.99	0	10	2	145.0	121	42	32	35	105
<b>TOTALS</b>	<b>97-42</b>	<b>30-11</b>	<b>2.88</b>	<b>4</b>	<b>12</b>	<b>3</b>	<b>372.0</b>	<b>335</b>	<b>155</b>	<b>119</b>	<b>128</b>	<b>326</b>

**Lyle Mouton,OF**

YEAR	AB	R	H	RBI	AVG.	2B	3B	HR	TB	SPCT.	BB	SO	SB
1990	174	44	61	41	.351	23	6	9	111	.638	33	39	5
1991	249	78	88	62	.355	17	2	13	148	.597	52	44	20
<b>TOTALS</b>	<b>422</b>	<b>122</b>	<b>149</b>	<b>103</b>	<b>.353</b>	<b>40</b>	<b>8</b>	<b>22</b>	<b>259</b>	<b>.614</b>	<b>85</b>	<b>83</b>	<b>25</b>

**Paul Byrd,RHP**

YEAR	G-GS	W-L	ERA	SV	CG	SHO	IP	H	R	ER	BB	SO
1989	27-10	6-2	3.38	1	0	0	90.7	70	46	34	45	73
1990	29-19	17-6	3.84	1	6	1	140.7	147	74	60	52	130
1991	21-18	8-3	4.66	2	1	0	102.3	113	64	53	50	116
<b>TOTALS</b>	<b>77-44</b>	<b>31-11</b>	<b>3.96</b>	<b>4</b>	<b>7</b>	<b>1</b>	<b>333.7</b>	<b>330</b>	<b>184</b>	<b>147</b>	<b>147</b>	<b>319</b>

**Keith Osik, C**

YEAR	AB	R	H	RBI	AVG.	2B	3B	HR	TB	SPCT.	BB	SO	SB
1988	145	18	27	23	.186	7	1	2	42	.290	24	22	2
1989	262	58	78	37	.298	14	1	3	103	.393	39	27	4
1990	268	60	91	65	.340	23	4	8	146	.545	45	35	15
<b>TOTALS</b>	<b>675</b>	<b>136</b>	<b>196</b>	<b>125</b>	<b>.290</b>	<b>44</b>	<b>6</b>	<b>13</b>	<b>291</b>	<b>.431</b>	<b>108</b>	<b>84</b>	<b>21</b>

**Andy Sheets,SS**

YEAR	AB	R	H	RBI	AVG.	2B	3B	HR	TB	SPCT.	BB	SO	SB
1991	238	48	65	42	.273	11	4	3	93	.391	39	45	9
1992	265	54	85	43	.321	17	1	7	125	.472	29	50	7
<b>TOTALS</b>	<b>503</b>	<b>102</b>	<b>150</b>	<b>85</b>	<b>.298</b>	<b>28</b>	<b>5</b>	<b>10</b>	<b>218</b>	<b>.433</b>	<b>68</b>	<b>95</b>	<b>16</b>

**Todd Walker, 2B**

YEAR	AB	R	H	RBI	AVG.	2B	3B	HR	TB	SPCT.	BB	SO	SB
1992	250	72	100	76	.400	21	3	12	163	.652	38	28	18
1993	276	85	109	102	.395	17	11	22	214	.775	49	35	14
1994	257	77	101	68	.393	23	1	18	180	.700	52	28	19
<b>TOTALS</b>	<b>783</b>	<b>234</b>	<b>310</b>	<b>246</b>	<b>.396</b>	<b>61</b>	<b>15</b>	<b>52</b>	<b>557</b>	<b>.711</b>	<b>139</b>	<b>91</b>	<b>51</b>

**Russ Johnson,SS**

YEAR	G	AB	R	H	AVG.	2B	3B	HR	RBI	BB	SO	SB
1992	63	240	61	81	.338	16	3	7	49	29	35	16
1993	71	259	83	92	.355	18	3	8	58	67	24	19
1994	66	234	72	96	.410	26	4	17	74	67	25	26
<b>TOTALS</b>	<b>200</b>	<b>733</b>	<b>216</b>	<b>269</b>	<b>.367</b>	<b>60</b>	<b>10</b>	<b>32</b>	<b>181</b>	<b>163</b>	<b>84</b>	<b>61</b>

**Armando Rios,OF**

YEAR	G	AB	R	H	AVG.	2B	3B	HR	RBI	BB	SO	SB
1991	59	136	40	41	.301	11	0	4	20	33	21	4
1992	58	197	49	47	.239	9	1	7	40	46	41	12
1993	70	235	71	75	.319	13	4	9	61	64	33	20
<b>TOTALS</b>	<b>187</b>	<b>568</b>	<b>160</b>	<b>63</b>	<b>.278</b>	<b>33</b>	<b>5</b>	<b>20</b>	<b>101</b>	<b>143</b>	<b>95</b>	<b>36</b>

**Warren Morris,INF**

YEAR	G	AB	R	H	AVG.	2B	3B	HR	RBI	BB	SO	SB
1994	64	229	58	65	.284	7	0	4	33	51	45	9
1995	64	252	70	93	.369	17	3	8	50	49	31	18
1996	28	75	24	30	.400	3	0	1	19	11	12	4
<b>TOTALS</b>	<b>156</b>	<b>556</b>	<b>152</b>	<b>187</b>	<b>.336</b>	<b>25</b>	<b>3</b>	<b>13</b>	<b>102</b>	<b>111</b>	<b>88</b>	<b>31</b>

**Brett Laxton,RHP**

YEAR	G-GS	W-L	ERA	SV	CG	SHO	IP	H	R	ER	BB	SO
1993	19-17	12-1	1.98	0	5	1	109	67	32	24	47	98
1994	14-14	4-5	4.36	0	1	0	66	63	46	32	38	54
1995	13-13	4-4	4.37	0	0	0	68	65	44	33	42	65
1996	14-12	8-2	3.54	0	0	0	56	50	29	22	28	55
<b>TOTALS</b>	<b>60-56</b>	<b>28-12</b>	<b>3.34</b>	<b>0</b>	<b>6</b>	<b>1</b>	<b>299</b>	<b>245</b>	<b>151</b>	<b>111</b>	<b>155</b>	<b>272</b>

**Eddie Yarnall,LHP**

YEAR	G-GS	W-L	ERA	SV	CG	SHO	IP	H	R	ER	BB	SO
1994	5-5	0-0	10.95	0	0	0	12.1	12	16	15	10	17
1995	16-10	5-0	3.45	0	1	0	60	46	29	23	36	87
1996	19-17	11-1	2.38	0	3	0	124.2	89	37	33	52	156
<b>TOTALS</b>	<b>40-32</b>	<b>16-1</b>	<b>3.24</b>	<b>0</b>	<b>4</b>	<b>0</b>	<b>197</b>	<b>147</b>	<b>82</b>	<b>71</b>	<b>98</b>	<b>260</b>

**Rick Greene,RHP**

YEAR	G-GS	W-L	ERA	SV	CG	SHO	IP	H	R	ER	BB	SO
1990	34-2	1-3	4.30	7	0	0	67	81	42	32	28	38
1991	41-0	7-2	3.17	14	0	0	48.1	37	19	17	23	51
1992	28-0	5-3	3.02	8	0	0	53.2	38	19	18	25	62
<b>TOTALS</b>	<b>103-2</b>	<b>13-8</b>	<b>3.57</b>	<b>29</b>	<b>0</b>	<b>0</b>	<b>169</b>	<b>156</b>	<b>80</b>	<b>67</b>	<b>76</b>	<b>151</b>

**Randy Keisler, LHP**

YEAR	ERA	W-L	G	GS	CG	SHO	SV	IP	H	R	ER	BB	SO
1998	4.61	9-5	27	12	2	1	2	99.2	97	65	51	33	135

**Brandon Larson,INF**

YEAR	G	AB	R	H	AVG.	2B	3B	HR	RBI	BB	SO	SB
1997	69	289	82	110	.381	16	2	40	118	21	57	9

**Kurt Ainsworth,RHP**

YEAR	G-GS	W-L	ERA	SV	CG	SHO	IP	H	R	ER	BB	SO
1998	6-0	0-0	4.50	0	0	0	8.0	10	5	4	7	14
1999	22-19	13-6	3.45	1	5	2	130.1	114	65	50	48	157
<b>TOTALS</b>	<b>28-19</b>	<b>13-6</b>	<b>3.51</b>	<b>1</b>	<b>5</b>	<b>2</b>	<b>138.1</b>	<b>124</b>	<b>70</b>	<b>54</b>	<b>55</b>	<b>171</b>

**Trey Hodges,RHP**

YEAR	G-GS	W-L	ERA	SV	CG	SHO	IP	H	R	ER	BB	SO
1999	13-7	3-2	7.08	0	0	0	34.1	50	31	27	8	38
2000	20-6	5-2	5.25	2	0	0	60.0	79	42	35	23	52
<b>TOTALS</b>	<b>33-13</b>	<b>8-4</b>	<b>5.92</b>	<b>2</b>	<b>0</b>	<b>0</b>	<b>94.1</b>	<b>129</b>	<b>73</b>	<b>62</b>	<b>31</b>	<b>90</b>

**Brian Tallet,LHP**

YEAR	G-GS	W-L	ERA	SV	CG	SHO	IP	H	R	ER	BB	SO
1999	19-12	3-4	5.01	0	0	0	59.1	59	41	33	30	60
2000	25-21	15-3	3.52	1	3	3	143.1	132	74	56	57	134
<b>TOTALS</b>	<b>44-33</b>	<b>18-7</b>	<b>3.95</b>	<b>1</b>	<b>3</b>	<b>3</b>	<b>202.2</b>	<b>191</b>	<b>115</b>	<b>89</b>	<b>87</b>	<b>194</b>

# LSU in the MLB Draft

YEAR	PLAYER	POSITION	ROUND	TEAM
1965	Joe Moock	SS	3rd	New York Mets
1966	Bruce Baudier	RHP	31st	Washington Senators
1967	Bruce Baudier	RHP	5th	New York Yankees
	Richard Hicks	RHP	6th	Washington Senators
1968	Richard Hicks	RHP	4th *	Houston Astros
	William Hunt	SS	7th *	Baltimore Orioles
1969	William Hunt	SS	9th *	Cleveland Indians
1970	Bill Bright	OF	2nd *	St. Louis Cardinals
1972	Joel Sexton	RHP	27th	Pittsburgh Pirates
1973	Randy Wiles	LHP	5th	St. Louis Cardinals
1974	Mike Miley	SS	1st	California Angels
1975	Guy Hollingsworth	LHP	16th	San Diego Padres
	Pat Moock	RHP	22nd	Texas Rangers
1976	Wally McMakin	RHP	23rd	Minnesota Twins
	Paul Stefan	RHP	24th	Chicago White Sox
	Frank Toups	INF	26th	Cleveland Indians
1979	Duane Dewey	C/1B	1st *	Kansas City Royals
1982	Billy Wiesler	OF	14th	California Angels
	Billy Donathon	RHP	15th	St. Louis Cardinals
1983	Cal Santarelli	RHP	3rd	Cleveland Indians
	Ronnie Robbins	RHP	14th	Toronto Blue Jays
1984	Mark Howie	SS	3rd	Oakland Athletics
	Tim Sossamon	OF	12th	St. Louis Cardinals
	Tim Schneider	3B	15th	Seattle Mariners
	Mark Cooper	C	16th	Toronto Blue Jays
	Clay Parker	RHP	21st	Minnesota Twins
1985	Eric Hetzel	RHP	1st *	Boston Red Sox
	Robbie Smith	RHP	4th	Minnesota Twins
	Marty Lanoux	3B	13th	Minnesota Twins
	Clay Parker	RHP	15th	Seattle Mariners
	Jeff Reboulet	SS	26th	Houston Astros
1986	Mark Guthrie	LHP	4th	St. Louis Cardinals
	Jeff Reboulet	SS	10th	Minnesota Twins
	Rob Leary	C	12th	Montreal Expos
	Jeff Yurtin	3B	12th	San Diego Padres
	Jim Bowie	1B	12th	Seattle Mariners
1987	Albert Belle	OF	2nd	Cleveland Indians
	Barry Manuel	RHP	2nd	Texas Rangers
	Gregg Patterson	LHP	5th	Chicago Cubs
	Mark Guthrie	LHP	7th	Minnesota Twins
	Jack Voigt	OF	9th	Baltimore Orioles
	Stan Loewer	RHP	16th	San Francisco Giants
1988	Dan Kite	RHP	4th	Boston Red Sox
1989	Ben McDonald	RHP	1st	Baltimore Orioles
	Russ Springer	RHP	7th	New York Yankees
	Curtis Leskanic	RHP	8th	Cleveland Indians
	Mike Bianco	C	40th	Detroit Tigers
1990	Tim Clark	OF	8th	Milwaukee Brewers
	Wes Grisham	OF	14th	Pittsburgh Pirates
	Keith Osik	C	23rd	Pittsburgh Pirates
	Scott Bethea	SS	28th	Boston Red Sox
1991	Chad Ogea	RHP	3rd	Cleveland Indians
	Paul Byrd	RHP	4th	Cleveland Indians
	Lyle Mouton	OF	5th	New York Yankees
	Mark LaRosa	LHP	8th	Montreal Expos
	Gary Hymel	C	14th	Montreal Expos
1992	Rick Greene	RHP	1st	Detroit Tigers
	Lloyd Peever	RHP	4th	Colorado Rockies
	Andy Sheets	SS	4th	Seattle Mariners

\* selected in the secondary phase of the draft



*Head coach Smoke Laval worked with 24 future major leaguers – including Lyle Mouton – during his tenure as an LSU assistant coach from 1984-93.*



*Brandon Larson was the 1997 first-round pick of the Cincinnati Reds.*



1993	Harry Berrios	OF	8th	Baltimore Orioles
	Matt Chamberlain	RHP	11th	Pittsburgh Pirates
	Mike Sirotka	LHP	15th	Chicago White Sox
	Mike Neal	OF	16th	Cleveland Indians
	Trey Rutledge	RHP	19th	Cincinnati Reds
	Will Hunt	LHP	31st	Detroit Tigers
1994	Todd Walker	2B	1st	Minnesota Twins
	Russ Johnson	SS	1st	Houston Astros
1995	Scott Schultz	RHP	5th	Cleveland Indians
	Mike Klostermeyer	1B	18th	Oakland Athletics
	Scott Fitterer	RHP	22nd	Toronto Blue Jays
	Brett Laxton	RHP	24th	Seattle Mariners
	Brian Winders	RHP	66th	Kansas City Royals
1996	Eddie Yarnall	LHP	3rd	New York Mets
	Nathan Dunn	3B	4th	San Diego Padres
	Warren Morris	2B	5th	Texas Rangers
	Tim Lanier	C	10th	San Diego Padres
	Justin Bowles	OF	16th	Oakland Athletics
	Jason Williams	SS	16th	Cincinnati Reds
	Brett Laxton	RHP	24th	Oakland Athletics
	Patrick Coogan	RHP	48th	Arizona Diamondbacks
1997	Brandon Larson	SS	1st	Cincinnati Reds
	Patrick Coogan	RHP	3rd	St. Louis Cardinals
	Casey Cuntz	INF	10th	Arizona Diamondbacks
	Mike Koerner	OF	11th	Oakland Athletics
	Eddy Furniss	1B	14th	Minnesota Twins
	Kevin Shipp	RHP	33rd	Philadelphia Phillies
	Tom Bernhardt	OF	45th	Chicago Cubs
1998	Randy Keisler	LHP	2nd	New York Yankees
	Eddy Furniss	1B	4th	Pittsburgh Pirates
	Jake Esteves	RHP	6th	San Francisco Giants
	Doug Thompson	RHP	19th	Colorado Rockies
	Chris Demouy	LHP	24th	Anaheim Angels
	Dan Guillory	RHP	40th	Cleveland Indians
1999	Kurt Ainsworth	RHP	1st	San Francisco Giants
	Jeff Leumont	1B	9th	New York Yankees
	Josh Dalton	SS	12th	Los Angeles Dodgers
	Bryan Grace	RHP	16th	New York Yankees
	Brian Tallet	LHP	19th	Pittsburgh Pirates
	Brandon Bowe	RHP	30th	Florida Marlins
2000	Brian Tallet	LHP	2nd	Cleveland Indians
	Brad Cresse	C	5th	Arizona Diamondbacks
	Ryan Jorgensen	C	7th	Chicago Cubs
	Cedrick Harris	OF	10th	Arizona Diamondbacks
	Brad Hawpe	1B	11th	Colorado Rockies
	Heath McMurray	RHP	12th	Milwaukee Brewers
	Trey Hodges	RHP	17th	Atlanta Braves
	Billy Brian	RHP	25th	Kansas City Royals
2001	Mike Fontenot	2B	1st	Baltimore Orioles
	Todd Linden	OF	1st	San Francisco Giants
	Ryan Theriot	SS	3rd	Chicago Cubs
	Jason Scobie	RHP	15th	New York Mets
	Bryan Moore	1B	22nd	St. Louis Cardinals
	Shane Youman	LHP	43rd	Pittsburgh Pirates
	Sean Barker	OF	46th	Toronto Blue Jays
	Billy Brian	RHP	47th	Cleveland Indians
2002	Sean Barker	OF	6th	Colorado Rockies
	Bo Pettit	RHP	13th	Minnesota Twins
	Brad David	LHP	17th	Atlanta Braves
	Wally Pontiff	3B	21st	Oakland Athletics
	Jake Tompkins	RHP	28th	Texas Rangers



*Mark Guthrie has enjoyed a 14-year major league career.*



*Ryan Theriot earned 2000 CWS all-tournament honors and was a 2001 third-round selection of the Chicago Cubs.*



*Kurt Ainsworth (right) was honored at the Louisiana Governor's Mansion by Gov. Mike Foster (left) after winning a gold medal in Sydney.*

## LSU in the Olympics

LSU's profound success in Olympic competition began in 1988, when head coach Skip Bertman and right-hander Ben McDonald helped lead the United States to the gold medal in Seoul, South Korea. Bertman served as the pitching coach of the 1988 U.S. squad, and McDonald pitched the Americans to complete-game victories over Korea and Puerto Rico. In the two wins, McDonald allowed just two earned runs in 18 innings, recording 17 strikeouts and four walks.

Reliever Rick Greene, LSU's all-time saves leader (29), continued the Tigers' Olympic tradition by pitching for the 1992 U.S. squad which competed in Barcelona, Spain. The '92 team, however, failed to advance to the medal round.



*Skip Bertman coached the U.S. to a bronze medal in Atlanta.*

Skip Bertman served as head coach of the 1996 United States Olympic team, guiding the Americans to the bronze medal in Atlanta. LSU standouts Warren Morris (second base) and Jason Williams (short-stop) were the starting middle infielders for Team USA, which defeated Nicaragua for the bronze medal in

Atlanta's Fulton County Stadium.

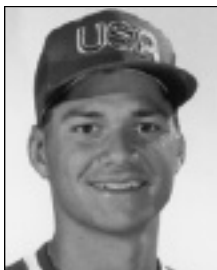
Morris and Williams each enjoyed a spectacular summer of 1996 which culminated in the bronze-medal triumph. Morris was Team USA's leading hitter at the Olympics, batting .409 (9-for-22) in nine games with one double, five homers, 11 RBI and 10 runs. Williams hit .367 (11-for-30) with three homers, nine RBI and 10 runs.

Team USA's '96 pre-Olympic tour was highlighted by a stop at LSU's Alex Box Stadium on June 20. The game served as a homecoming for Bertman, Morris and Williams, as the Americans defeated Australia, 11-6, before a standing-room only crowd of 6,926.

LSU right-hander Kurt Ainsworth pitched the U.S. to two wins at the 2000 Olympics in Sydney, Australia, en route to the gold medal. Ainsworth defeated Holland and Australia with a pair of dominating performances. In the victories, Ainsworth worked a total of 11.2 innings, allowing just two earned runs on 10 hits with three walks and 10 strikeouts.



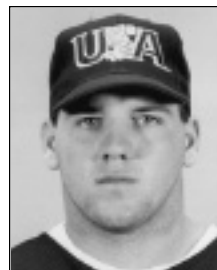
*LSU second baseman Warren Morris was Team USA's leading hitter in the '96 Olympics.*



**Ben McDonald**  
1988 U.S. Olympic Gold Medalist



**Rick Greene**  
1992 U.S. Olympian



**Jason Williams**  
1996 U.S. Olympic Bronze Medalist



**Kurt Ainsworth**  
2000 U.S. Olympic Gold Medalist