

LSU



2015

FAN GUIDE

THE SOURCE FOR EVERYTHING ON GAMEDAY



PRESENTED BY





FOOTBALL 2015 FAN GUIDE

THE SOURCE FOR EVERYTHING ON GAMEDAY

CONTENTS

3	Gameday Timeline/2015 Football Schedule
5	Athletics Ticket Office Information
7	Game-by-Game Parking
8	Best Routes to and from Tiger Stadium
9	Parking Policies
11	Disabled & Oversized Vehicle Parking
13	Motor Home Parking
15	Tailgating Policies
19	Tiger Stadium Policies
27	Fan Services
31	Gate Changes and Numbering Reminders
33	Tiger Stadium Seating Chart
35	Postseason Ticket Information
39	LSU Sports Radio/TV Network
43	Head Coach Les Miles
47	LSU Fight Songs
50	2015 Football Roster
58	NCAA Compliance Information
64	Tradition Fund Chart
70	Tiger Athletic Foundation
74	Please Stay off Field
76	Allowable Items in Stadium
77	Non-Allowable Items in Stadium
80	LSU Head Coaches
MAP	Fold-out Parking/Traffic Map

CREDITS

GENERAL MANAGER: Ward Wyatt, LSU Sports Properties
EDITOR: Michael Bonnette, LSU Athletics
FOOTBALL STD: Michael Bonnette, LSU Athletics
DESIGN: Krystal Bennett, LSU Athletics
PHOTOGRAPHY: Steve Franz, Chris Parent
PROGRAM MANAGERS: Mathew Shanklin, Carla Hugg, LSU Sports Properties
PRINTING: Publication Printers
SALES: Lance Burgos, Kevin Burkey, Keving Wagner, Jake Smith



LSU Sports Properties, Inc.
LSU Athletic Administration Building
Baton Rouge, LA 70803
Tel: 225.578.8883 / FAX 225.578.6565

Visit LSU Athletic Ticket Office to order additional copies of the Fan Guide. For more information about advertising opportunities with LSU Athletics through, print, radio, internet, TV or sponsorship call (225) 578-8883.

USP **University Sports Publications Co. Inc.**
570 Elmont Road Elmont, NY 11003
Tel: 516.327.9500 / Fax: 516.327.3099

EXECUTIVE V.P. - OPERATIONS: Jeff Botwinick
EXECUTIVE V.P. - BUSINESS DEVELOPMENT: Martin Lewis
EXECUTIVE V.P. - SALES: Steven Farkas
EXECUTIVE V.P. - TEAM RELATIONS: David Gerschwer
EXECUTIVE ADMINISTRATIVE DIRECTOR: Julie Wong
PRODUCTION MANAGER: Nippa Esendal
PRODUCTION ASSISTANT: Ashley Dethlefsen

© 2015 COPYRIGHT LSU ATHLETICS AND LSU SPORTS PROPERTIES, INC.
The Coaches' Trophy and the image of the Crystal Football are trademarks of the American Football Coaches Association (AFCA). The AFCA is the copyright owner of the Coaches' Trophy. © 1986 AFCA. For licensing information, please go to www.championlicensing.com.



Paul M. Cangelosi
Mark E. Duck
Daniel J. Faulk
Bruce W. Langley
Terry P. Melancon
James P. Perry
Shauna L. Soper
Major Thibaut

NEW YORK LIFE.
THE COMPANY YOU KEEP. ®

NEW YORK LIFE
INSURANCE COMPANY
Baton Rouge General Office
2431 S. Acadian Thruway, Ste #350
Baton Rouge, LA 70808
225.387.9300

GAMEDAY TIMELINE

Times of Note for a Typical Night Game in Tiger Stadium (Based on a 7 p.m. kickoff)

Noon	LSU Ticket Office opens * (first floor of LSU Athletics Administration Building)
2:30 p.m.	Live band performs at Zatarain's Tiger One Village
4:00 p.m.	Club level and Suites open at Tiger Stadium
4:15 p.m.	LSU Student gates open at Tiger Stadium
4:30 p.m.	All remaining gates open at Tiger Stadium
4:50 p.m.	LSU walks down "Victory Hill"
5:00 p.m.	LSU Gameday presented by CST on the air
5:05 p.m.	Mike the Tiger comes down "Victory Hill"
5:10 p.m.	LSU band marches down "Victory Hill"
6:25 p.m.	Mike the Tiger Field Parade
6:40 p.m.	Guest Captains Presentation
6:45 p.m.	Golden Band from Tigerland takes the field for pregame performance
6:50 p.m.	Alma Mater and National Anthem
6:56 p.m.	LSU takes the field
6:57 p.m.	Visitor takes the field
7:00 p.m.	Kickoff

*Ticket office will open at 8 a.m. for games that start prior to 6 p.m.

LSU **2015**
FOOTBALL
SCHEDULE

September 5	McNeese State
September 12	Mississippi State*
September 19	Auburn* FIELD GAME
September 26	Syracuse
October 3	Eastern Michigan ALUMNI BAND
October 10	South Carolina*
October 17	Florida*
October 24	Western Kentucky HOMECOMING
November 7	Alabama*
November 14	Arkansas* LSU SALUTES
November 21	Ole Miss*
November 28	Texas A&M*

While - Denotes Home Games
 * Denotes SEC opponent
 All dates are subject to change

IMPORTANT NUMBERS TO KNOW

LSU Tigers	(225) 578-8001
Tiger Athletic Foundation	(225) 578-4823
TAF on day of game	(225) 578-0177
LSU Ticket Office	(225) 578-2184
Toll free:	(800) 960-8587
LSU Sports Properties	(225) 578-8883
LSU SportShop	(225) 578-1336
LSU Police	(225) 578-3231
Lost and Found	Contact LSU Police
LSU Office of Visitor Information	(225) 578-5030
Tailgating Clean-up/Recycling	(225) 578-3186
Farr Park (Motorhome Parking)	(225) 769-7805
Official LSU Tigers Website	LSUsports.net
Official TAF Website	LSUtaf.org
Official LSU Website	LSU.edu
Official LSU Athletics Tickets	LSUtix.net
Official LSU Online Merchandise	LSUshop.net
Official LSU Athletics Photo Store	LSUpix.net
LSU Tigers on Facebook	facebook.com/LSUTigers
LSU Football on Facebook	facebook.com/LSUFootball
@LSUfbal on Twitter	twitter.com/LSUfbal
@LSUCoachMiles on Twitter	twitter.com/LSUcoachmiles
LSU Social Media Directory	LSUsports.net/connect
Text Services - Report Fan Issues	69050
CN Railroad Emergency	(800)-465-9239

LSU

NEED HELP?

Text "LSU" <space> issue & location to 69050

IF YOU SEE SOMETHING SAY SOMETHING

LSU TEXT SERVICE

Text "LSU" <space> issue & location to 69050.

LSU Athletics offers a text messaging service for customer feedback in Tiger Stadium during games - Please share your in-stadium concerns and issues with the Tiger Stadium Operations Command Center. The LSU Text Service is for security and customer issues only - we are here to help. If you see something, say something! Guests are encouraged to report unruly patrons and/or any activity in violation of LSU Fan Code of Conduct. LSU Athletics is committed to providing a safe, secure, and enjoyable atmosphere.

TICKET INFORMATION

The LSU Athletics Ticket Office is located on the first floor of the LSU Athletic Administration Building. The Athletic Administration Building is on the corner of Nicholson Drive and North Stadium Drive, in the west parking lot of Tiger Stadium. The LSU Athletic Ticket Office is open from 8 a.m. - 5 p.m. CT, Monday-Friday, except on university-observed holidays. The Ticket Office is open on game days beginning at noon for games that kickoff at 6 p.m. or later, and 8 a.m. for games that kickoff before 6 p.m.

SEASON TICKETS

Tradition Fund Tickets

Approximately 45,000 football season tickets require a donation to LSU's Tradition Fund for the right to purchase those tickets. Invoices for the Tradition Fund Contribution are mailed in January of each year. Tradition Fund Contributions are due by March 31 of each year, prior to the mailing of season ticket renewal forms.

Tiger Athletic Foundation Tickets

A limited amount of season tickets require Tiger Athletic Foundation donations. TAF ticket donations are also due by March 31 and share the same deadlines and application procedures as Tradition Fund tickets. TAF also offers premium seating in the Stadium Club and the Tiger Den Suites. For information on TAF premium seating, please contact the TAF offices at (225) 578-4823 or www.lsutaf.org.

Season Ticket Renewals

Season ticket renewals for football are mailed in April each year. The deadline for renewal is usually May 31. Season ticket holders are notified of exact dates each year. If you have not received a renewal form by the first week of May, please call the ticket office. Full payment is due in the ticket office by the deadline date on the renewal form.

New Season Tickets

A waiting list for football season tickets is available from mid-January to March 31 each year. To register for the waiting list, log on to www.lsutix.net. A \$10 fee is required annually to register for the wait list, and tickets are issued based on LSU Philanthropic Priority Point order. Cash, check, Visa, MasterCard or American Express are acceptable forms of payment for season tickets.

INDIVIDUAL GAME TICKETS

Home Game Tickets

Individual game football tickets for select games go on sale each summer. Fans interested in purchasing individual game tickets can sign up for Geaux-Mail, the LSU Ticket Office's free broadcast email system, and indicate that they want to receive football ticket information. All phone and internet orders are subject to applicable service fees. Individual game ticket prices can be found at www.LSUtix.net.

Away Game Tickets

Season ticket holders may apply for away game tickets in the spring of each year. Season ticket holder deadline to request away game tickets is May 31. Remaining away game tickets go on sale to the general public in August if available. The host school sets the price of away game tickets, and that cost varies. All phone and internet orders are subject to applicable service fees.

2015 Away Game Prices:

Sept. 12 - at Mississippi State - \$75
Sept. 26 - at Syracuse - \$60
Oct. 10 - at South Carolina - \$75
Nov. 7 - at Alabama - \$100
Nov. 21 - at Ole Miss - \$90

RESALE OF TICKETS

Ticket Resale Policy

LSU Athletics tickets are revocable licenses and LSU may revoke tickets for any reason, at the University's discretion. These ticket licenses do not confer any property right to the ticket holder. In accordance with Louisiana state law La. R.S. 4:1, LSU forbids the resale of tickets above the price printed on the ticket. Ticket holders are advised that LSU may cancel or revoke tickets for certain conduct including, but not limited to, the following:

- The resale of, or attempted resale of, tickets above the price printed on the ticket in violation of Louisiana law;
- Any form of fraudulent activity;
- The purchase of tickets for the purpose and intent of reselling the tickets on the secondary market above the price printed on the ticket; and
- Use of tickets for sweepstakes, contests, and/or promotions without the prior written consent from LSU.

Ticket Resale on Site

Tickets may not be resold in the immediate vicinity of Tiger Stadium. The immediate vicinity of the stadium is defined as the area bordered by Nicholson Drive on the west, North Stadium Drive on the north, South Stadium Drive on the south and Field House Drive on the east.

Ticket Marketplace

The LSU Ticket Marketplace is a venue for our valued LSU fans to buy and sell their tickets for upcoming LSU games. If you own LSU season tickets, you can sell your tickets on the LSU Ticket Marketplace on an event-by-event basis. Purchasing the best available seats is both simple and safe, where you are ensured of buying valid tickets in a transaction fully supported by the LSU Athletic Ticket Office. Go to LSUtix.net for more information.

TICKET INFORMATION • SEATING SECTIONS & GATE ACCESS

Tiger Stadium has evolved over the years with changing sections and gate numbering. Please be sure to check your ticket prior to arrival for proper gate entrances.

SOUTH UPPER DECK

Enter Gates 22 - 28
• Sections 650 - 658

SOUTH TIGER DEN SUITES

Enter Gate 21
• Tiger Den Suites (136 - 168)
• Tiger Den Suites (236 - 268)

SOUTH STADIUM CLUB

Enter Gate 20
• Stadium Club Level (550, 552, 554, 556, 568, 560, 562, 564, 566, 568)
• Upper Stadium Club Level (553, 555, 557, 559, 561, 563, 565)

SOUTH LOWER & MIDDLE

Enter Gates 22-28 or Gate 12
• Sections 401 - 409
• Sections 410 - 424
• EBL and WBL

NORTH ENDZONE STUDENT SEATING

Enter Gate 7 (only LSU students allowed)
• 201 - 205
• 217 - 221 (LSU Band - 217)
• 222 - 236

NORTH ENDZONE

Enter Gate 8
• 206 - 210
• 211 - 216
• 237 - 244

WEST UPPER DECK & TIGER TERRACE

Enter Gates 1-3 or Gates 4-6
• Sections 510 - 520
• Sections 610 - 619

WEST STADIUM CLUB

Enter Gates 1-3 or Gates 4-6
• Lower Level Stadium Club (101 - 111)
• Upper Level Stadium Club (201 - 211)
• Third Level Stadium Club (308 - 311)

LOWER WEST

Enter Gates 1-3 or Gates 4-6
• Sections 100 - 106

EAST UPPER DECK & TIGER TERRACE

Enter Gate 9 or Gates 22-28
• Sections 530 - 543
• Sections 630 - 643
• Gate 9 - Escalator / Gates 22-28
Ramp Access
• Patrons sitting in the east upper deck may use gate 9 (the escalator) or they may enter through the south endzone (gates 22-28) and access the East Upper Deck Ramp
• If you are physically capable of walking up the ramp, it is recommended for a quicker entry process

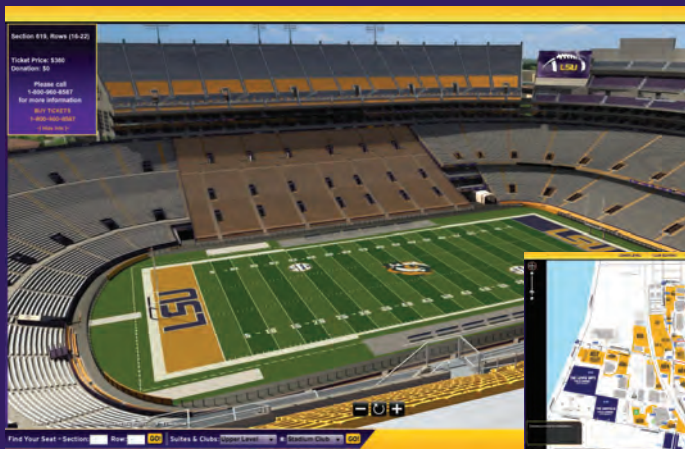
EAST TIGER DEN SUITES

Enter Gate 14
• Tiger Den Suites (101 - 135)
• Tiger Den Suites (201 - 235)

LOWER EAST

Enter Gate 10 or Gate 11
• Sections 300 - 306

TIGER STADIUM **3D** SEATING CHART



Use the **Interactive Parking Map** to assist in finding your parking lot location on campus.



Introducing a new **virtual seat-viewing online tool** which gives fans a three-dimensional look at Tiger Stadium from a fan's perspective. This system, called "Seats 3D," assists fans with the purchase of single-game tickets. The system also includes an **Interactive parking map** where fans can plot a course to all LSU Football GameDay reserved parking lots on campus. Another feature of Seats 3D to be added in the summer of 2014 will be an **online relocation tool** with which renewed season-ticket holders and wait list members (based on LSU Philanthropic ranking) can check availability, switch seat locations or make new purchases.

PARKING INFORMATION

RESERVED SEASON PARKING

Parking in the gold highlighted areas of the parking map is season reserved parking. Parking permits for these lots are issued through the LSU Philanthropic Priority Point System. To join the waiting list for 2016 reserved season parking, visit LSUtx.net. For more information about the LSU Priority Point System, visit LSUtaf.org. Reserved Season Parking lots are indicated with the color gold on the parking map inside the back cover of this Fan Guide.

PUBLIC PARKING - LIMITED AVAILABILITY

Old Front Nine, Levee Lots, Hayfield Lots, and Golf Course Areas

Parking in these areas is free public parking. Many of the Free Parking areas on campus are indicated with the color purple on the parking map inside the back cover of this Fan Guide. Parking availability in these areas is limited and is first-come first-serve. Carpooling is strongly encouraged.

GAME-BY-GAME PARKING

There is a charge to park in the area west of Highland Road on football game-days. This area will include parking spaces west of Highland Road, north of Nicholson Drive Extension and south of Chimes Street. Access to this area is sold game-by-game on a first-come, first-served basis. The cost to park in this area is \$20-40 per game for vehicles. Utility trailers may be parked in the area for \$50 each. Fans may purchase decals at Overnight Decal Sales Locations (OD) starting at noon CT on Fridays prior to home games. Gameday sales will begin approximately 6 a.m. at Game Parking Entrances (GP). Please refer to the blue area of the parking map, and the timeline to the right for complete details. Game-by-Game Parking located in the Highland Road and Tower Drive area is indicated by the color blue on the parking map inside the back cover of this Fan Guide.

OD

OVERNIGHT DECAL (OD) SALES LOCATION

Fans wishing to leave vehicles in the restricted access area overnight must purchase a decal at Alex Box Stadium ticket office, according to the timeline below. Overnight decals are not available after 8 PM.

GP

GAME PARKING (GP) ENTRANCES

To enter this restricted access area after 6 a.m. on gameday, please use the Game Parking (GP) Entrances located on Highland Road at both Dalrymple Drive and South Stadium Drive. Fans may purchase overnight decals for both vehicles (\$40) and trailers (\$50) according to the timeline to the right.

Sat, Sep 5	McNeese	\$20
Sat, Sep 19	Auburn*	\$40
Sat, Oct 3	Eastern Michigan	\$20
Sat, Oct 17	Florida*	\$40
Sat, Oct 24	Western Kentucky	\$20
Sat, Nov 14	Arkansas*	\$40
Sat, Nov 28	Texas A&M*	\$40



TRAILER PARKING

There is a charge of \$50 per game to park trailers in the Game-to-Game parking area located in the Highland Road and Tower Drive area. Trailers parked in parking spaces within the colored area of the map and common areas adjacent to the colored area are subject to the \$50 per game charge. This area is indicated by the color blue on the parking map inside the back cover of this Fan Guide. Fans can find purchasing information for trailers in the timeline listed to the right. Trailers should not exceed the size limit of a normal parking space.

LSUSPORTS.NET/PARKING

Visit LSUsports.net/parking for all parking maps, directions, and any updated information.

TIMELINE for Accessing Game-by-Game Parking Area:

FRIDAY

Noon - 8 p.m.

Overnight Decal Sales Location (OD) open at Alex Box Stadium ticket office (Gourrier Lane).

5 p.m.

Vehicles/trailers are allowed to enter restricted access area. Decals are not necessary to enter in the area unless vehicles/trailers will be parked overnight (past 6 a.m. on Saturday). NOTE: Overnight decals do not allow for entry to the restricted access area after 4 a.m. on gameday.

SATURDAY

6 a.m.

All vehicles/trailers without overnight decals displayed must vacate the Game-by-Game parking area. Towing of non-decaled vehicles/trailers will begin at 6 a.m.

6 a.m.

Passes to the Game-by-Game parking area available for sale (CASH ONLY) at Game Parking (GP) Entrances on Dalrymple Drive at Highland Road, and South Stadium Drive at Highland Road. Traffic into this area will be restricted. Sales of passes will continue until the Game-by-Game parking area is full.

TRAFFIC ROUTES TO TIGER STADIUM



City Police and LSU Police have listed the best traffic routes for motorists driving to Tiger Stadium for LSU football games. To report traffic problems, call LSU Police at (225) 578-3231. Visit LSUsports.net/parking for an interactive parking map with directions for each parking lot.

APPROACHING CAMPUS

From the North

If approaching the stadium from the north, use either River Road, Nicholson Drive, Highland Road or Dalrymple Drive. From these routes, parking will be available north of the stadium, on Nicholson Drive near the Carl Maddox Fieldhouse, at Kirby Smith Residence Hall lots off Aster and Roosevelt Streets, or at the Pleasant Hall lots on Dalrymple Drive.

From the East or South

If approaching the stadium from east or south, use either College Drive, Acadian/Stanford exit, Highland Road or Burbank Drive and Nicholson Drive. Parking for those using these routes is available on Gourrier Lane south of the stadium, off River Road near the Mississippi River and or additional lots east of the stadium in the vicinity of the John M. Parker Coliseum.

From South on Nicholson/Burbank

Fans coming from the south on Nicholson Drive or Burbank Drive will be routed to Gourrier Lane, then to River Road.

One-Way Traffic to Stadium (90 minutes prior to kickoff)

Approximately 90 minutes prior to kickoff, police will direct one-way traffic only toward Tiger Stadium on Highland Road from Lee Drive, on West Lakeshore Drive from Stanford, on Nicholson Drive Extension from Parker Boulevard and on Dalrymple Drive from the I-10 overpass.

EXITING CAMPUS

Going South

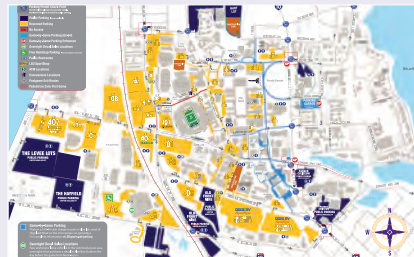
After the game, southbound traffic from the stadium will be directed onto Nicholson Drive or to River Road. Nicholson Drive will turn into a one-lane roadway south bound until Bluebonnet Boulevard. Nicholson Drive at Bluebonnet Boulevard will return to normal two way traffic flow going south. Fans who are traveling in the left lane of Nicholson Drive will be directed to turn onto Bluebonnet Boulevard and fans traveling in the right lane of Nicholson Drive will be directed to continue straight (southbound).

Going North

After the game, northbound traffic west of Tiger Stadium will be directed onto Nicholson Drive or to River Road. Northbound traffic east of Tiger Stadium will be directed onto Highland Road.

Gameday Travel Map

Refer to the fold-out map inside this Fan Guide for detailed information on exit routes.



PARKING POLICIES

Carpooling

POLICY:

Fans are encouraged to carpool as often as possible and to arrive early to campus.

REASON:

The fewer vehicles on campus on game day, the more parking opportunities there will be for everyone.

Closed Streets

POLICY:

North Stadium Drive, South Stadium Drive and West Stadium Drive (next to Tiger Stadium) will be closed to all vehicular traffic on game days.

REASON:

The streets nearest to Tiger Stadium are heavily utilized by pedestrians. This is a safety and security measure.

Neutral Grounds (Median Parking)

POLICY:

Parking of vehicles on the neutral ground (medians) and on landscaped areas (including on Nicholson Drive) is not permitted.

REASON:

Vehicles parked on neutral grounds can obstruct the vision of motorists and presents a danger for pedestrians and motorists. Landscaped areas are not intended for vehicular parking.

Nicholson Drive Parking

POLICY:

Vehicles may not park on the shoulders of Nicholson Drive between North Stadium Drive and Burbank/Gourrier Lane for football games. In addition, no vehicles may park on the eastside shoulder of Nicholson Drive from Burbank/Gourrier Lane to Brightside Drive. Vehicles that park in these areas will be towed. Tailgating may take place along Nicholson Drive, however, personal vehicles may not park next to the street. (Instituted: 2014 football season)

REASON:

Parked vehicles along Nicholson Drive (side of road) can cause obstructed views for vehicles traveling on Nicholson Drive and for fans walking to the game. This is a safety and security measure.

Parking in Designated Areas

POLICY:

Automobiles and motor homes may park only in designated areas. No parking is permitted on roots of trees or under drip lines of tree branches.

REASON:

LSU has one of the most picturesque campuses in America, and we ask our fans to help preserve its beauty. Parking on the roots of LSU's historic oak trees will shorten the life span of this valuable resource.

Police Directions

POLICY:

Motorists must follow the directions given by police officers on campus.

REASON:

Police officers along the traffic routes and at parking lots are there to direct motorists to the best routes for the closest available parking.

Saving Spaces

POLICY:

Saving parking spaces for other motorists is not permitted in any area.

REASON:

Parking on the LSU campus is first-come, first-served, except in lots and streets with reserved spaces.

Spaces for Vehicles Only

POLICY:

Reserved parking spaces are for vehicles only. The purchase and use of a parking pass for other reasons, such as port-o-lets, trailers, tents, chairs, cookers, generators, etc., is not permitted.

REASON:

There are a limited number of parking spaces on the LSU campus for the fans that attend games. It is important to make every space available for use for parking.

Travel Lanes

POLICY:

Tailgating is not permitted in travel lanes on roads, parking lots, sidewalks or bike paths. No tents or other items may be placed in these areas or obstruct access through these areas.

REASON:

Vehicles must be able to access parking spots via travel lanes. Also, for the safety of tailgaters, travel lanes must remain clear for vehicles to pass, especially emergency vehicles.

Live Railroad

POLICY:

A live railroad track runs adjacent to Nicholson Drive through the LSU campus. Fans should avoid crossing these tracks at non-crossing areas. Crossing areas are located at Skip Bertman Drive and Gourrier Avenue. In addition, vehicles are prohibited from parking adjacent to these tracks.

REASON:

For the safety of all fans the railroad tracks should be avoided at non-crossing areas. These tracks receive rail traffic on gamedays and provide risk of injury to fans crossing at undesignated locations.

DISABLED PATRON PARKING



Free Disabled Patron Parking

Free Gameday disabled parking is located at Lot 409 on Gourrier Lane.

There are a limited number of spaces available. This area is available on a first come, first served basis beginning at 7 a.m. on game days. The lot is accessible by presenting a valid state issued disabled parking permit and/or valid disabled driver's license to the traffic officers on site. The disabled individual must be in the vehicle when entering the lot. Shuttle service will start 4 hours prior to kickoff for games scheduled after 12pm. For games scheduled at or before 12pm shuttle service will start 3 hours before kickoff. Pickup location will be in the Lot 409. The drop off location and post-game pickup will be on South Stadium Drive on the west side of Tiger Stadium. Shuttles will be available throughout the game for return service to Lot 409 and available through approximately 90 minutes following the conclusion of the game. A shuttle pass will be issued to all individuals in a vehicle accessing Lot 409 with handicap identification. The shuttle pass will be required to ride the shuttle.

Paid Disabled Patron Parking

Paid Disabled Patron Parking is sold out. Persons interested in purchasing a paid reserved parking permit can register for a waiting list at www.LSUsports.net under "Ticketing". Reserved disabled patron parking permits cost \$300 for the entire season and may require a Tradition Fund contribution. To purchase a season disabled patron-parking permit, you must have a state issued disabled parking permit or letter from your doctor stating the reason you need to park near the stadium, and a valid ID. Contact the LSU Athletics Ticket Office at (225) 578-2184 for more information. Passes are not transferable. The disabled individual must be in the vehicle when entering the lot.

OVERSIZED VEHICLE PARKING

Definition of Oversized Vehicles

DEFINITION:

An oversized vehicle for the purpose of LSU football tailgating is any vehicle other than a motor home more than 20 feet long and/or 7 feet wide. Oversized vehicles may park only with the permission of LSU Athletics Administration.

REASON:

Oversized vehicles do not fit into designated parking spaces and require special accommodations.

Bus Parking

POLICY:

Charter buses will park in Lot 406 on Skip Bertman Drive, just west of the Charles McClendon Practice Fields (see map inside back cover). Bus parking is free in Lot 406. RVs are not allowed in Lot 406. Parking space for busses is not guaranteed and is available upon arrival.

REASON:

Lot 406 is the closest lot to Tiger Stadium that can accommodate buses AND offer good access for buses to arrive and depart the LSU campus.

Limousines

POLICY:

A \$100.00 parking fee is required for Limousine parking at LSU football games. Limousines will be directed to park in Lot 406 on Skip Bertman Drive and must remain in place in that lot throughout the game or leave the campus. Limousines may not park overnight prior to the game. It is recommended that limousines approach campus on Nicholson Drive or River Road and may NOT pass through campus. After the game, those traveling in limousines must meet their limousine at Lot 406. There are a limited number of spaces available for limousines, so please contact the LSU Athletics Ticket Office at (225) 578-2184 in advance to purchase a permit for the game.

REASON:

Lot 406 is the closest lot to Tiger Stadium that can accommodate limos AND offer good access for limos to arrive and depart the LSU campus. Limousines take up more space than a normal automobile, so it is necessary to designate a particular location for these vehicles.

Utility Trailers

POLICY:

Utility trailers require a \$50 fee to park in the Game-by-Game parking area designated in blue on the gameday parking map. (information is available on pages 46-47 and at LSUsports.net/parking) Utility trailers are not permitted to park in reserved (gold) lots. Motor home owners will be permitted to pull a trailer into a motor home lot to drop off items up until seven hours prior to kickoff. Vehicles are permitted 15 minutes to drop off items in motor home lots. If the owner of a utility vehicle chooses to keep his/her trailer on campus, they will be directed to park it in a non-reserved lot such as a lot on Gourrier Lane.

REASON:

Spaces in reserved lots are reserved exclusively for cars or motor homes. Even if a utility trailer fits into a motor home space, it can cause tailgate parties to overflow into travel lanes, causing a hazard for other vehicles and the passage of emergency vehicles.

MOTOR HOME PARKING

NOTE: Motor Homes may park on the LSU campus only in the areas listed on this page.

SEASON RESERVED MOTOR HOME PARKING

Reserved motor home parking on a season basis is located in four areas on the LSU campus. All reserved motor home parking passes are sold out. To get on a waiting list for reserved motor home parking, register at LSUsports.net under "Tickets."

Lot 401

Corner of South Stadium Drive and Nicholson Drive

Passes in this lot are sold out. Passes in this lot are \$6,000 for spaces adjacent to South Stadium Drive and \$5,000 for spaces adjacent to Lot 402. All passes in this lot also require a Tradition Fund contribution of \$2,000 per space per year.

Lot 107

Corner of Nicholson Drive and Skip Bertman Drive

Site of the original Alex Box Baseball Stadium. Passes in this lot are sold out. Passes in this lot are \$500 each. All passes in this lot also require a Tiger Athletic Foundation contribution of \$3,500 per space per year.

Dixie RV Superstores Touchdown Village 1

Nicholson Extension across from Patrick Taylor Hall (formerly CEBA)

Passes in this lot are sold out. Passes in this lot are \$500 each plus a Tradition Fund contribution of \$900 per season.

Dixie RV Superstores Touchdown Village 2

Nicholson Extension at corner of Highland Rd.

Passes in this lot are sold out. Passes in this lot are \$500 each plus a Tradition Fund contribution of \$650 per season.

Lot 409 RV

Gourrier Lane next to Alex Box Stadium

Passes in this lot are sold out. Passes in this lot are \$500 each plus a Tiger Athletic Foundation contribution of \$1,500 per space per year.

INDIVIDUAL GAME MOTOR HOME PARKING

Reserved motor home parking on a game-by-game basis is located in one area on the LSU campus:

Lot 407

Skip Bertman Drive across from the LSU School of Veterinary Medicine

This lot will open at 6:30 a.m. on Friday prior to each home football game. Passes in this lot range from \$100-\$250 per game and may be purchased online at LSUsports.net under "Tickets" or by calling the LSU Ticket Office at (225) 578-2184.

Additional Motor Home Parking

Because motor home lots on the LSU campus often fill, LSU recommends Farr Park, located approximately two miles south of campus on River Road. Farr Park can be contacted at (225) 769-7805.

MOTOR HOME POLICIES

Only Motor Homes Allowed

POLICY: Motor home spaces may only be used for motor homes. Spaces may not be used for automobiles, trailers, tents, port-o-lets, etc. Corporate branded motor homes with advertising are not permitted.

REASON: All spaces in motor home lots are reserved for motor homes, and all spaces have been sold. There is a waiting list for motor home parking passes, so space in these lots is in high demand.

Opening Time for Lots

POLICY: Parking for motor homes in Lot 401, Lot 409 and Touchdown Village is available after 5 p.m. on Fridays of home football games. As these spaces are individually reserved, it is requested that the motor homes not arrive on campus until after 6 p.m. Parking for motorhomes in Lot 107 and Lot 407 is available after 6:30 a.m. CT on Fridays of home football games.

REASON: Motor home lots are used as student parking lots during the week. The University cannot ask students to move their vehicles until 5 p.m. on Fridays.

Closing Time for Lots

POLICY: Motor homes must vacate the LSU campus by noon the day following games (time subject to change).

REASON: LSU must have time to remove trash and clean all parking lots prior to the beginning of classes on Monday mornings.

Exhaust Extensions

POLICY: All motor homes require exhaust extensions that reach the top of the motor home. For the safety of everyone, motor homes without an extension should not operate a generator. This also applies to generators used by fifth-wheelers.

REASON: Exhaust fumes are dangerous and annoying to other tailgaters.

Prohibited Vehicles

POLICY: "Personal automobile vehicles (tow vehicles), Trailers, golf carts, ATVs, scooters, mopeds, segways, go carts and other motorized vehicles are prohibited in motor home lots for safety reasons.

"Personal automobile vehicles (tow vehicles) must vacate all motor home lots by an established time based on the game's kickoff time. This is typically 7 hours prior to kickoff, but is subject to change. This time will be posted Friday at the entrances of all motor home lots.

REASON: There are many people, including children, walking and playing in the motor home lots. The use of moving vehicles is dangerous to these pedestrians - this is a safety and security measure.

TAILGATING POLICIES

Tailgating has become a part of college football all across the country, but at LSU, for Tiger fans it is an art form. Over two-thirds of Tiger fans tailgate for five or more hours before every game, and many begin celebrating the great Tiger football experience more than 24 hours before kickoff.

LSU encourages its fans to come to campus early and enjoy the great tradition of tailgating. LSU also encourages its fans to tailgate in a responsible manner, respectful of the campus and of other Tiger fans and fans from visiting schools.

Help us keep your campus clean by bagging your trash and using recycling containers. LSU's Facility Services Department distributes trash bags throughout campus on game days for your convenience.

For the safety and enjoyment of all fans, please keep the following guidelines in mind when tailgating at LSU football games. Please note that tailgate setups are subject to removal for violation of tailgating policies.

Bands & Music

POLICY:

Live musical bands and other live performances are NOT allowed at tailgating sites.

REASON:

This policy is intended to protect the enjoyment of other fans. Musical tastes and tolerable noise levels vary greatly from tailgate party to tailgate party.

Music (Amplified)

POLICY:

Music must be confined to your tailgate area and speakers must be directed into your tailgate party. All music must be turned off by midnight the night before games and by 2 a.m. after games. Tailgaters are encouraged to contact LSU Police at (225) 578-3231 when music from another tailgate party becomes a nuisance. (Revised: 2007)

REASON:

This policy is intended to protect the enjoyment of other fans. Musical tastes and tolerable noise levels vary greatly from tailgate party to tailgate party.

Caterers

POLICY:

Caterers must have proper parking permits to be admitted to private tailgate areas in reserved lots.

REASON:

Parking lot attendants are instructed to only allow vehicles with parking permits into reserved lots. They cannot be expected to monitor vehicles that intend to drop off items and leave the lots.

Cookers

POLICY:

Cookers on trailers are not allowed in reserved lots, and no cooker at any location on campus may be larger than a 55-gallon drum (23" in diameter x 35" long). Cookers may not be placed in travel lanes or in parking spaces. Cookers may not be placed inside buildings. (Revised: 2007)

REASON:

All parking spaces are reserved for vehicles and may not be occupied by cookers. The size of cookers is regulated for safety reasons so that a cooker may be moved if necessary in the event of an accident or emergency. Cookers inside buildings are an obvious safety hazard.

Cooking Sites

POLICY:

Cooking is not permitted under building entrances, patios, covered walks or on any exposed aggregate, ornamental concrete, brick pavers, etc., where grease drippings can stain surfaces. Cooking is not permitted on Memorial Plaza or the War Memorial.

REASON:

Concrete stains are difficult and sometimes impossible to remove which is degrading to the appearance of the campus structures and can be a safety hazard by creating slippery conditions in the humid climate.

Fencing & Flooring

POLICY:

Fans may not erect or remove fencing or barricades of any type (permanent or temporary) on the LSU campus. Fan may also not

setup any temporary flooring on the LSU Parade Grounds or other areas deemed to be sensitive or prone to damage.

REASON:

Only University personnel are authorized to erect or remove fencing on campus. University personnel are responsible for maintaining a beautiful campus year round and many temporary fences and flooring create damage to the landscaped areas.

Flammables

POLICY:

Charcoal must be disposed of properly. Please do not place charcoal or other flammables in trash cans, under trees or leave it in the parking areas.

REASON:

Even items that appear to be extinguished may remain flammable and cause fires.

Food Distribution

POLICY:

Companies may not issue sample products without being properly licensed by the University. Food, drink, and other items may neither be sold nor given to the general public.

REASON:

This is a matter of legal liability for everyone involved. The University does not allow the sale or distribution of food on the LSU campus without proper credentials and insurance.

TAILGATING POLICIES (continued)

Generators

POLICY:

Portable electrical generators are permitted, but are discouraged. For temporary electrical needs, LSU recommends the use of battery operated inverters that convert the battery current to house current. These recommended devices do not generate hazardous carbon monoxide emissions, do not require gasoline cans and resultant hazards, and do not create noise that is potential damaging to hearing and a nuisance to fellow tailgaters. The operation of portable electrical generators that create excessive noise, emission hazards or other safety concerns will not be permitted. (Revised: 2009)

REASON:

Older generators can be loud and intrusive for other tailgaters. Older generators can also pose safety issues and may create a pollution hazard.

Glass Containers

POLICY:

Glass containers are strongly discouraged for use during tailgating activities.

REASON:

Broken glass can cause a safety hazard, not only for tailgaters, but also for students on campus during the week. This is a particular concern on the Parade Ground and other areas that are used for student recreational activities.

Motorized Vehicles (Go Carts, Etc.)

POLICY:

Golf carts, mopeds, scooters, ATVs, go carts and other custom motorized vehicles are not permitted on the LSU campus unless authorized by LSU Athletics.

REASON:

The use of motorized vehicles other than automobiles and motor homes can be a danger to pedestrians, especially children.

Political Activity

POLICY:

Political activity is subject to the same rules that apply to all signage, banners, solicitation, distribution of literature and other non-LSU activities on the LSU campus. Distribution of fliers, stickers, buttons, signs, or promotional items is prohibited without approval by LSU Administration. Contact the LSU Office of Finance & Administration at (225) 578-3386 prior to game day for information on the approval process. Subject to reasonable restrictions to protect safety and pedestrian access, you may display political signs measuring not more than 2 feet in any dimension within your immediate tailgating area, if you are present at the location at all times and the signs do not block any walkway or other path.

REASON:

The University, as a government agency, recognizes the First Amendment rights of those visiting campus. It imposes these reasonable time, place, and manner restrictions on distribution and display of commercial, non-profit, and political materials to protect the public safety. In addition to the public safety concerns, LSU will not allow itself to be perceived as endorsing any commercial, non-profit, or political activity, campaign, or issues except as authorized by law and LSU policy.

Port-O-Lets

POLICY:

Individuals may not arrange to bring portable restrooms onto campus. LSU provides port-o-lets and restrooms in many buildings throughout campus for the convenience of fans.

REASON:

Unless LSU manages the activity of providing port-o-lets on campus, these units can be left in parking lots in areas utilized by students on class days, and may remain un-serviced, resulting in unsanitary conditions.

Drones & Remote Controlled Aircraft

POLICY:

The use and/or operation of remote controlled equipment/cameras/toys/aircraft (including all drones and unmanned aircraft systems) is strictly prohibited on all areas of the LSU Campus - including Gamedays and during gameday related activities (i.e. Friday game preparations). All grounds and parking lots are considered part of the LSU Campus.

REASON:

LSU Athletics and the LSU Police department strive to maintain a safe and secure environment for everyone in attendance. In accordance with FAA guidelines, LSU Athletics will adhere to these restrictions and protective measures for fan safety, security, and privacy.

Security and Safety

POLICY:

It is the responsibility of each tailgate party to secure tailgate items prior to entering the stadium. Tailgaters should lock food, beverages and valuables out of sight in vehicles; extinguish all fires or flames; unplug electrical outlets; secure barbecue pits, chairs, and ice chests; and store beverages in locked containers. LSU Athletics is not responsible for lost or stolen items.

REASON:

Up to 120,000 fans tailgate on the LSU campus on game days. LSU cannot ensure the security of each and every tailgate party on campus.

Sidewalks & Bike Paths

POLICY:

Tailgating is not permitted on sidewalks, bike paths and landscaped areas.

REASON:

Sidewalks and bike paths are necessary routes for pedestrians to reach Tiger Stadium. If sidewalks and bike paths are blocked, pedestrians may be forced into streets in the path of vehicular traffic.

TAILGATING POLICIES (continued)

Signage and Banners

POLICY:

Banners and signage recognizing businesses, non-profits, or political candidates, campaigns, or issues may not be displayed, nor may promotional materials be distributed without prior approval by LSU Administration. For non-commercial messages (that is, non-profit or political messages), and subject to reasonable restrictions to protect safety and pedestrian access, small signs, measuring not more than 2 feet in any dimension, may be placed within your immediate tailgating areas, if you are present at the location at all times and the signs do not block any walkway or other path.

REASON:

LSU operates a successful corporate sponsor program. In order to fulfill contractual obligations with its sponsors, LSU cannot permit businesses to display banners or signage

on campus. Only companies that have corporate sponsor agreements with LSU Athletics may display their signage. Companies interested in more information on this subject should contact LSU Sports Properties at (225) 578-8883.

Solicitation

POLICY:

Solicitations of any kind, for commercial, non-profit, political, or other purposes, within LSU facilities or on LSU premises are prohibited unless specifically approved by LSU Administration. The distribution of flyers or leaflets on parked vehicles is expressly prohibited.

REASON:

This is also a matter of legal liability and institutional control. LSU does not allow the sale or distribution of goods and services on the LSU campus without proper credentials and insurance.

Utilities Owned By University

POLICY:

The use of electrical outlets in or on LSU facilities, or other utilities such as water sources, is expressly prohibited. This policy will be strictly enforced and violators will be subject to arrest for theft of utilities.

(Revised: 2007)

REASON:

Overuse of utilities can cause outages, surges or shortages that may affect critical operations on the LSU campus.

TENTS

Tent Size

POLICY:

LSU discourages the use of tents larger than 10' by 10'. Tents may not be staked into the ground. Limited space is available near the Alex Box parking lot for larger tents. Please call LSU Sports Properties at (225) 578-8883 to reserve a space. (Revised: 2009)

REASON:

Tents must be of a size that can be moved quickly in the event of an emergency. Stakes can damage utilities beneath the LSU campus and can be dangerous to tailgaters. Oversized tents can impede the tailgating enjoyment of other fans. Please be courteous in the placement of tents.

Tents During Game

POLICY:

Tents should be taken down before you enter the game.

REASON:

Unexpected winds may cause

tents to scatter when unattended, and tents are subject to theft when left alone.

Tents in Parking Lots

POLICY:

Fans using a tent or canopy over the tailgate of a vehicle should restrict the size to no larger than 10' x 10' and may not take up space in other parking spaces or travel lanes. Tents may not be used to save parking spaces. Tents must not block travel lanes.

REASON:

Vehicles must be able to access parking spots via travel lanes. Also, for the safety of tailgaters, travel lanes must remain clear for vehicles and pedestrians to pass. This is also important to allow for the passage of emergency vehicles.

Tents on Sidewalks

POLICY:

Tents may not be set up on sidewalks, bike paths, travel lanes

or any other area of regular flow of pedestrian traffic.

REASON:

Sidewalks, bike paths and travel lanes must be left passable for pedestrians. Please be courteous of other tailgaters.

Tents Canopies/ Displays

POLICY:

Tent canopies/covers are considered signage/displays - Tents canopies may not display corporate logos, advertising, or signage (tent canopies should be plain/generic).

REASON:

LSU operates a successful corporate sponsor program. Only companies that have corporate sponsor agreements with LSU Athletics may display their logos/signage. Companies interested in more information on this subject should contact LSU Sports Properties at (225) 578-8883.

TIGER STADIUM GENERAL POLICIES

ANNOUNCEMENTS

POLICY: Public address announcements are restricted to emergency situations only and must be requested through LSU Police at (225) 578-3231 or dial 911 for emergency situations.

REASON: Many in-stadium announcements are requested, but only emergency situations can be addressed through PA announcements in Tiger Stadium. To properly address these situations, LSU Police are responsible for determining the level of importance of any requested emergency announcement.

ARTIFICIAL NOISE-MAKERS

POLICY: Southeastern Conference rules do not permit artificial noise-makers to be brought into or used in Tiger Stadium. Anyone found violating this policy is subject to ejection.

REASON: The SEC implemented this rule in order to prevent the distraction of the participants and officials in the game.

BACKPACKS AND BAGS

POLICY: Backpacks of all varieties are not allowed in Tiger Stadium. All bags (including purses) larger than 8 ½ inches x 11 inches are also NOT allowed in Tiger Stadium. Bags should not be larger than a standard sheet of paper.

REASON: National and local security officials have designated backpacks and large bags as security risks. Unattended bags create a security threat. Bags may not be left at the gates or in the surrounding areas. Any unattended bags will be confiscated, removed, and discarded immediately. LSU Athletics is not responsible for the care or security of any items left unattended. Thank you for your cooperation with this very important policy.

RECOMMENDATION: For overall safety and security, LSU recommends fans to reduce the need to bring bags into Tiger Stadium – leave all unnecessary items at home/vehicle. Please reduce the amount of items you need to bring and use a bag smaller than 8 ½ inches by 11 inches (per person) for carrying personal items into Tiger Stadium.

BANNERS AND POLES

POLICY: Banners may NOT be hung and poles may NOT be brought into Tiger Stadium unless approved by LSU Athletic Administration – must show documentation of the approved request for admission.

REASON: Banners or poles in Tiger Stadium can be a nuisance to other fans by obstructing their view of the game and can create safety concerns for those in the area. Also, LSU must ensure that it abides by its contractual agreements with corporate sponsors regarding signage in Tiger Stadium.

BEVERAGE POLICY (ALCOHOL)

POLICY: The possession or consumption of alcohol in the general seating areas of Tiger Stadium is expressly prohibited by University policy. Stadium personnel and law enforcement agencies will enforce this policy. Persons who are intoxicated or who are in possession of alcohol are subject to ejection from the stadium.

REASON: LSU is committed to providing all fans with a safe, fun and enjoyable experience. Fans are encouraged report those in violation of this policy.

CAMERAS

POLICY: Cameras are permitted in Tiger Stadium for both fans and working news media. All photos taken in Tiger

THE FOLLOWING ITEMS ARE NOT ALLOWED IN TIGER STADIUM:

- Coolers, ice chests, bottles, cans, cups (or containers of any kind)
- Backpacks of any kind or variety (all sizes)
- All bags and any purses larger than 8.5" x 11"
- Outside food and drinks
- Any type of artificial noise makers - violators are subject to ejection
- Pets of any variety (except for certified service animals)
- Video cameras
- Weapons of any kind - including pocket knives, multi-function tools, and any items deemed inappropriate (no return of any confiscated weapons)
- Banners/Flags/Poles/projectiles of any kind (and/or any obtrusive/obstructive signage) - small handheld signs are subject to approval by LSU Administration

TIGER STADIUM POLICIES

- Smoking and the use of all tobacco products on the LSU Campus is prohibited. This prohibition applies to all individuals while on the LSU Campus, including faculty, staff, students, administrators, contractors, and visitors.
 - Cigarettes, e-cigarettes, cigars, smokeless tobacco, snuff, pipes, and chewing tobacco are not permitted
- All persons must have a ticket for admission - regardless of age
- No Re-entry - Anyone leaving the stadium must have a new unused ticket to re-enter
- All persons entering the facility are subject to search
- Items may not be stored at or near the gates of the stadium
 - Any and all items left unattended will be removed and discarded
- No oversized portable stadium seats or objects that may impede on the comfort/safety of others (including items such as portable heaters, fans, etc.)
- Tickets may not be resold on the stadium premises and/or the surrounding grounds (including the stadium parking lots)

Stadium must be for editorial or personal use only and may not be used for advertising, promotions or other trade purposes, or any other commercial or promotional endeavor, without the permission of LSU. Contact the LSU Office of Finance and Administrative Services at (225) 578-3386 with any questions.

REASON: The sale of images with current student-athletes is against NCAA rules and can risk the eligibility of LSU student-athletes. Additionally, any commercial use of photos of Tiger Stadium, campus landmarks or identifiable campus elements is prohibited without the prior written approval of the University.

RE-ENTRY TO STADIUM

POLICY: Anyone leaving the stadium must have an unscanned new ticket to return to the stadium. Once a ticket has been scanned, it may not be used again for re-entry, unless otherwise directed by LSU Event Management (or gameday officials) in emergency situations.

REASON: SEC rules prohibit "pass out checks" from being issued.

SMOKING & TOBACCO USE

POLICY: Smoking and the use of all tobacco products on the LSU Campus is prohibited. This prohibition applies to all individuals while on the LSU Campus, including faculty, staff, students, administrators, contractors, and visitors. Cigarettes, e-cigarettes, cigars, smokeless tobacco, snuff, pipes, and chewing tobacco are not permitted

REASON: On August 1, 2014, LSU became tobacco free, in accordance with the governor's "Well-Ahead" program. The Louisiana legislature has implemented a smoke-free requirement for all state university property, and all public post-secondary institutions in Louisiana must be in compliance. All of LSU's athletic facilities are considered public buildings under this statute. Additionally, a public place also covers sports arenas, educational facilities and any enclosed areas to which the public is invited. Electronic cigarettes create the appearance of smoking, which can be misinterpreted by others.

TIGER STADIUM GENERAL POLICIES (CONT.)

STANDING DURING GAMES

POLICY: LSU encourages fans to be courteous of other fans in choosing to stand during games. Spontaneous reaction to plays or significant events is expected and encouraged. Continued standing during game action when other fans are sitting is discouraged and will be addressed by LSU Event Staff if complaints from other fans are reasonable and continuous.

REASON: Common courtesy dictates that fans should not block the view of other fans who are seated during game action. Please be respectful of those around you so all Tiger fans may enjoy the game.

STADIUM SECURITY

POLICY: All visitors to Tiger Stadium may be subject to search.

REASON: With heightened security now a way of life, LSU will do everything possible to provide a safe and secure environment for its fans. Please be cooperative with stadium officials and law enforcement agencies during your visit to Tiger Stadium. Direct any concerns to the nearest officer or stadium attendant - if you see something, say something.

RECOMMENDATION: All fans should read and understand the prohibited item list and the stadium policies. Fans are encouraged to arrive early and be vigilant with concern to your own personal safety and those around you. If you notice something suspicious, please report the matter immediately to a law enforcement officer or event staff team member.

STADIUM SEATS (PORTABLE)

POLICY: Any seat that impedes on the comfort and enjoyment of a fan in an adjacent seat (in front, behind or to the side) is prohibited. (Revised: 2007 season)

REASON: Wide stadium seats can overlap into the seat of the fan next to you.

RECOMMENDATION: Any stadium seat measuring 16 inches wide or less will fit into any seat in Tiger Stadium. In some portions of Tiger Stadium, seats wider than 16 inches may fit. Please be considerate of those sitting around you and please be aware that some seats with LSU logos may be too large for use at Tiger Stadium. To order a pre-installed stadium seat, please visit LSUTigerSeatback.com or call 1-866-895-1490.

STARTING TIMES

POLICY: All LSU home games are scheduled to begin at 7 p.m. Central time, however the starting times for all games are subject to change. Television rights as negotiated by the Southeastern Conference often dictate a change of starting time for a game. For the latest information, please visit the Official Web Site of LSU Athletics at LSUsports.net or check your local news media.

REASON: Night games are a tradition at Tiger Stadium, and LSU will play games at night when possible. However, as a member of the SEC, LSU is obligated to cooperate with the league office in moving start times for television.

Recommendation: Watch your local media or check at LSUsports.net for the most up-to-date starting times for LSU football games. Updates are also available via LSU's various social media outlets such as Facebook and Twitter.

THROWN OBJECTS

POLICY: The throwing of objects from the stands is strictly prohibited and is cause for immediate ejection. Also, fans may not go onto the playing field at any time before, during or after games.

SPORTSMANSHIP

LSU encourages its fans to show good sportsmanship and conduct themselves in a manner that represents LSU, the Southeastern Conference and the NCAA with honor, dignity and respect. LSU strongly recommends that fans:

- Demonstrate the qualities of civility and sportsmanship at all times.
- Refrain from the use of vulgar, abusive, racist, sexist, demeaning or intimidating language at any time.
- Always support the players, coaches and officials in a positive manner.
- Treat the visiting team, coaches and fans with courtesy and respect at all times.
- Refrain from engaging in cheers that are vulgar, crass or demeaning.
- Refrain from throwing objects for any reason.

LSU Athletics has high standards of fan behavior for all guests in attendance - failure to comply with the sportsmanship guidelines set forth may result in ejection and loss of future ticket privileges.

REASON: Thrown objects can cause serious injury. LSU takes very seriously the safety of fans, coaches, athletes and officials. LSU will act promptly and accordingly if the safety of any individual is in jeopardy. Any fan/spectator ejected for throwing objects or unauthorized access may be subject to additional penalties and possible loss of future ticket privileges.

TICKETS

POLICY: All persons, regardless of age, must present a ticket for admission to Tiger Stadium.

REASON: This policy is for the convenience and safety of all Tiger ticket holders. Even the smallest of LSU fans sitting on their parents' lap can be an inconvenience to the fan sitting in the next seat and a safety risk for the child.

UMBRELLAS

POLICY: Umbrellas are NOT allowed in Tiger Stadium. Umbrellas left at the gate/entrance will be confiscated and discarded during security sweeps.

REASON: Umbrellas are a sight obstruction and possible safety hazard for other fans. Recommendation: LSU advises the use of ponchos or other wearable rain gear for inclement weather.

VIDEO CAMERAS

POLICY: Video cameras are not permitted in Tiger Stadium except for the working news media. Video images taken in Tiger Stadium must be for personal use only and may not be used for advertising, promotions or other trade purposes, or any other commercial or promotional endeavor, without the permission of LSU. Contact the LSU Office of Finance and Administrative Services at (225) 578-3386 with any questions.

REASON: LSU is obligated to protect the television and digital rights granted by the Southeastern Conference to television networks and other media. By prohibiting video cameras except for use by credentialed working media, LSU can best manage that obligation.

LSU FAN SERVICES

BUSES

LSU provides free parking for buses in Lot 406, located on Skip Bertman Drive (see LSU Football Parking Map). LSU encourages fans to ride buses to Tiger Stadium to reduce the number of vehicles on campus.

BUS PARKING

Charter buses will park in Lot 406 on Skip Bertman Drive, just west of the Charles McClendon Practice Fields. (Parking Map) Bus parking is free in Lot 406. RVs are not allowed in Lot 406.

BUS SERVICE (HOME GAMES)

Several local establishments traditionally provide bus service to LSU football games. Fans in the Baton Rouge area may consult their local media for locations to catch shuttle buses to Tiger Stadium on game day or watch LSUsports.net for updates.

CUSTOMER SERVICE

Members of the LSU Event Staff and LSU Geaux Team are located at the gates, portals, and throughout Tiger Stadium and are available to answer any gameday questions and help resolve customer issues. The mission of the LSU Event Staff and LSU Geaux Team is to enthusiastically provide guests of Tiger Stadium with a friendly, service-focused approach that will maximize your safety and enjoyment of the game.

ENTERTAINMENT

A live band performs each Saturday in front of the Pete Maravich Assembly Center at Tiger One Village. The band at Tiger One Village will begin playing approximately five hours before kickoff.

FIRST AID & MEDICAL

For the safety of fans in Tiger Stadium, first-aid stations are located throughout the stadium. If you need assistance or you are with someone who does, contact the nearest aid station, law enforcement officer or event staff team member. Each station has trained first responders to provide assistance, and if necessary, advanced emergency medical support will also be available throughout the game in the stadium trauma center. If necessary, fans should call 911 for any emergency situations in-stadium medical assistance.

GAMEDAY PROGRAMS

Programs are available for sale in and around Tiger Stadium beginning about four hours before game time. Game programs provide information

on LSU and its opponent, as well as interesting feature stories on the LSU Athletics program. If you are interested in advertising in LSU's Gameday programs in any sport, contact LSU Sports Properties at (225) 578-8883.

INTERNET & MOBILE: LSUSPORTS.NET

The radio broadcast of LSU football games can be heard around the world at LSUsports.net in the GeauxZone. Tiger fans can hear veteran play-by-play commentator Jim Hawthorne and former All-American Doug Moreau describe all the action on a subscription basis. Go to LSUsports.net/join for more information and pricing.

LOST AND FOUND

Items found during the game and during Sunday clean-up will be turned over to LSU Police on Monday morning following games, located in the Public Safety Building on South Stadium Drive. Call (225) 578-3231 to ask if your item has been turned in.

LOST OR STOLEN TICKETS

For information on lost or stolen tickets, contact the LSU Athletic Ticket Office at (225) 578-2184.

LOST OR MISSING PERSONS

Please contact the LSU Event Staff or Law Enforcement - they will stay with you until the missing person is found. Pick up a Mike's Tiger Tag Wristband at the Ticket Office or check with ticket takers upon entry to the stadium. In an effort to help individuals keep tabs on children or those that might need special assistance. Please use a Mike's Tiger Tag wristband - write your contact information and adhere the wristband to your child/relative/friend. If you become separated, contact the nearest stadium team member for assistance.

MERCHANDISE

The LSU SportShop next to Mike the Tiger's habitat is open daily and on game days. See the parking and traffic map in this Fan Guide for other SportShop locations. Fans can also order merchandise at LSUshop.net, the official online store of LSU Athletics.

RECYCLING

LSU has placed numerous collection containers throughout the LSU campus for recycling of glass,

plastic and aluminum items. Please help LSU's recycling program by utilizing these containers. For more information, contact the Facility Services Help Desk at (225) 578-3186.

SECURITY CAMERAS

For the safety and security of all fans and stadium personnel, security cameras are utilized in Tiger Stadium. These cameras will be used by our security team as another tool to help make your stadium experience safe and enjoyable.

TICKET OFFICE

The LSU Athletic Ticket Office is located on the first floor of the Athletic Administration Building on the corner of Nicholson Drive and North Stadium Drive, in the west parking lot (Lot 101) of Tiger Stadium. The office is open weekdays from 8 a.m. to 5 p.m. The ticket office will open on the days of home football games at noon for games that kickoff at 6 p.m. or later, and at 8 a.m. for games that kickoff prior to 6 p.m.

TRADEMARK USE

LSU created a trademark licensing program in 1981. The three purposes of the program are to protect the University's indicia (marks, names, and logos), promote the University, and to generate funds which are used for general University endeavors including scholarships and various other needs. Individuals, groups or organizations, both on and off campus, seeking to use LSU indicia must have prior written approval from the University. For more information about the licensing process, contact the LSU Trademark Licensing office at (225) 578-3386, trademark@lsu.edu, or www.LSU.com.

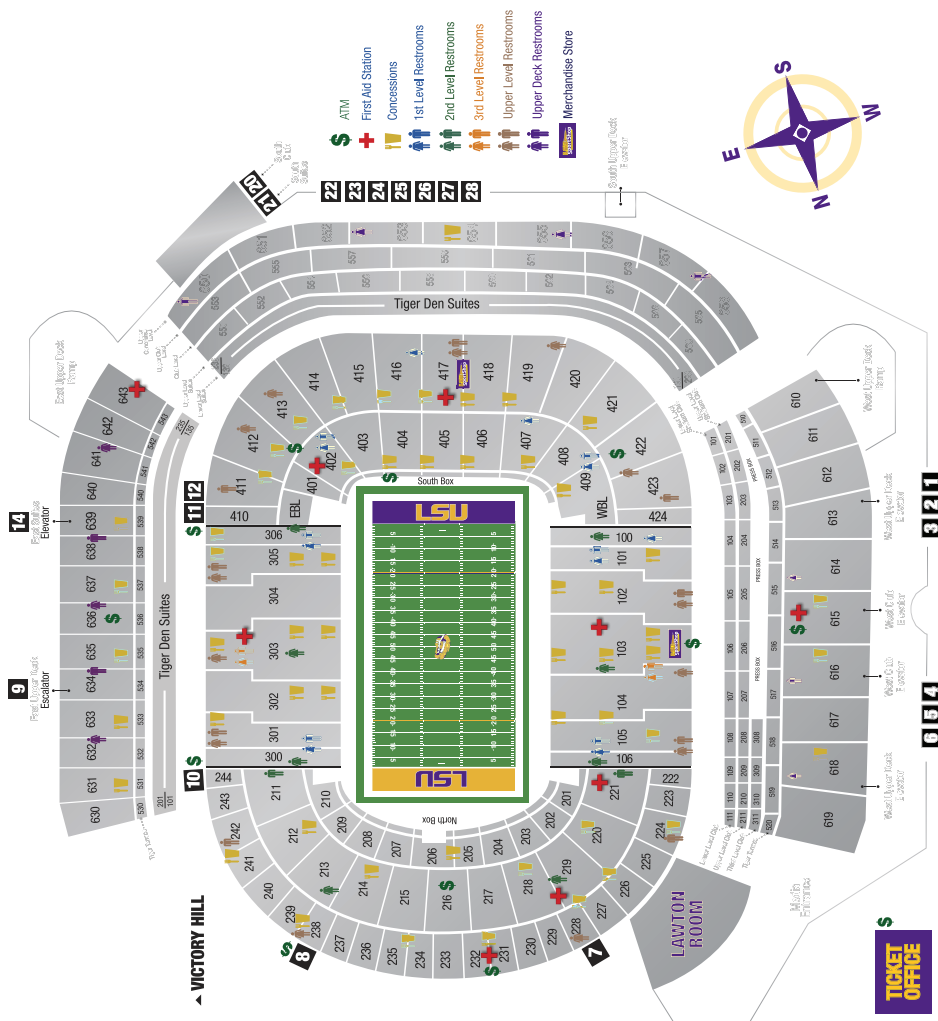
TRASH

The University conveniently places receptacles for the disposal of trash and other items throughout the LSU campus. You can help keep your campus clean by disposing of your trash. For more information, contact the Facility Services Help Desk at (225) 578-3186.

WILL-CALL FOR TICKETS

The will-call window for tickets is located in the LSU Ticket Office in the LSU Athletic Administration Building. Only the person whose name is on the ticket order may pick up the tickets. A photo ID is required for all will-call orders.

TIGER STADIUM SEATING CHART



POSTSEASON FOOTBALL TICKETS

During the course of the 2015 football season, LSU football season ticket holders will receive information by e-mail regarding the opportunity to apply for tickets to any postseason games in which the Tigers may participate. At that time, a deadline will be established for applying for tickets. Possible postseason games include the SEC Football Championship Game, the college football playoffs, and/or a holiday bowl game.

If the demand for tickets exceeds the supply available to LSU for any particular game, a distribution system utilizing the LSU Priority Point System will be used to determine ticket distribution.

Tickets for any postseason games involving LSU will be allocated first to players, coaches, LSU students and athletic department staff. Next, an allotment of tickets will be distributed through the LSU Priority Point System, based on points accumulated for contributions to LSU Athletics, the Tiger Athletic Foundation, LSU Foundation and LSU Alumni Association. To be eligible to purchase tickets based on the LSU Priority Point System, the applicant must be a football season ticket holder.

The number of ticket requests from football season ticket holders will be measured against the number of available tickets to determine if any limits must be imposed. LSU will make every effort to accommodate as many of its fans as possible.

Ticket orders and seat locations are not accepted nor assigned on a first-come, first-served basis.

LSU Priority Point System

LSU Priority Points are awarded for contributions to the LSU Tradition Fund, the Tiger Athletic Foundation and for academic giving to the University.

- For the Tradition Fund, points are awarded based on 1 point per \$1,000 in contributions.
- For academic giving, points are awarded based on 1 point per \$4,000 in contributions.
- For TAF Donations, 1 point is awarded per \$1,000 in contributions for ticket purchases and 2 points per \$1,000 in philanthropic donations.

Contact the TAF for information on obtaining bonus points for various levels of giving at (225) 578-4823, or log on to LSUtaf.org.

Availability/Limitations/Point System

There is no limit on the number of tickets that may be ordered for postseason games, however, LSU is limited in the number of tickets received for those games. Consequently, the requests for postseason game tickets are sometimes much greater than the number of tickets available.

Should the demand for tickets exceed the supply available to LSU, limits will be imposed based on the chart below in order to accommodate requests from as many football season ticket holders as possible.

Should the number of tickets you request be reduced, you will be notified by e-mail

Methods of Ordering

- Come in person to the LSU Athletics Ticket Office.
- Order by mail with order form (to be e-mailed during the season).
- Use the official web site of LSU Ticket Office, LSUtix.net.

No fax, phone orders or checks will be accepted.

2015 LSU POSTSEASON FOOTBALL GAME TICKET PRIORITY CHART

LSU Point Ranking	SEC Championship	Bowl Games
1-100	8	8
101-250	6	6
251-750	4	4
*751 and above	2 (if available)	2 (if available)
*No Rank	2 (if available)	2 (if available)

* Tickets will be awarded in these categories until the allotment of tickets designated for LSU Priority Point System distribution is exhausted.

LSU SPORTS RADIO NETWORK



THE LES MILES SHOW

The Les Miles Show presented by Capital One Bank, a one-hour radio program held Wednesdays during football season at 7 p.m. CT, returns for the 2015 season on Aug. 26. "The Voice of the Tigers" Jim Hawthorne serves as the host of the show which features the 11th-year head coach of the Tigers. Fans have the opportunity to watch the show live at TJ Ribs on Acadian Thruway and ask coach Miles questions on the air. To speak with the head coach on the show, call (800) 315-8255. The Les Miles Show airs on select LSU Sports Radio Network Affiliates (see adjacent list) and in the Geaux Zone at LSUsports.net/live.



LSU SUNDAY NIGHT LIVE!

LSU Sunday Night Live!, a one-hour radio call-in show, is aired on Sunday at 6 p.m. CT from Aug. 30 through Dec. 6, 2015.

The one-hour show airs on select LSU Sports Radio Network Affiliates (see adjacent list) and in the Geaux Zone at LSUsports.net/live.



SIRIUSXM RADIO



SiriusXM Satellite Radio broadcasts LSU football, basketball and other select LSU events - including coverage of SEC championships - to its subscribers. Visit LSUsports.net/satellite for a weekly schedule and details.

2015 Radio Network Affiliates

CITY	SHOWS	CALL LETTERS	FREQUENCY
Baton Rouge (flagship)	FB, LM	WDGL-FM	98.1
Baton Rouge	SNL	WBRR-FM	107.3
Alexandria	FB, SNL	KZMZ-FM	96.9
Alexandria	FB, LM	KSYL-AM	97.0
Bogalusa	FB, LM	WBOX-FM	92.9
Crossett, Ark.	FB, LM	KWLT-FM	102.7
Ferriday	FB, LM, SNL	KRFN-FM	107.1
Houma	FB	KXDR-FM	106.3
Houma	LB, SNL	KJIN-AM	1490
Jackson, Miss.	FB, LM, SNL	WYAB-FM	103.9
Jena	FB, LM, SNL	KJNA-FM	102.7
Lafayette/Opelousas	FB, LM	KLWB-FM	103.7
Lafayette/Opelousas	SNL	KOCM-FM	107.1
Lake Charles	FB	KKGB-FM	101.3
Lake Charles	LM, SNL	KXZZ-FM	1580
Leesville	FB, LM, SNL	KJAE-FM	93.5
Monroe	FB	KLIP-FM	105.3
Monroe	LM, SNL	KMLB-AM	540
Morgan City	FB	KBZE-FM	105.9
Morgan City	LM, SNL	KFRA-AM	1390
New Orleans	FB, LM	WWL-AM	870
New Orleans	SNL	WWL-AM	1350
Ruston	FB, LM, SNL	KNBB-FM	97.7
Shreveport	FB, LM, SNL	KWKH-AM	1130
Tallulah	FB, LM, SNL	KTJZ-FM	97.5
Tylertown, Miss.	FB, LM, SNL	WFCC-FM	107.3
Vicksburg, Miss.	FB, LM, SNL	WBBV-FM	101.3
Ville Platte	FB, LM, SNL	KVPI-FM	1050
Ville Platte	FB	KVPI-FM	92.5
SiriusXM Satellite	FB	Ch. 199, 200, 201	

FB - LSU Football Games; LM - Les Miles Show; SNL - LSU Sunday Night Live! Affiliates subject to change. Visit LSUsports.net/radioaffiliates for update.

LSU SPORTS TELEVISION NETWORK



Inside LSU Football with Les Miles presented by Academy Sports + Outdoors provides a behind-the-scenes look into the LSU football program. Gordy Rush serves as host, joining LSU head coach Les Miles to break down highlights, provide in-depth analysis, and profile the 2015 Tigers. Inside LSU Football is syndicated weekly (see affiliates list) throughout the state of Louisiana and across the south on Cox Sports Television and FOX Sports Net. In addition, the show can be viewed in its entirety on LSU's official athletics web site, LSUsports.net/geauxzone. Inside LSU Football debuts Sunday, Sept. 6, 2015, and will air each week until Nov. 29.

2015 TV Network Affiliates

Baton Rouge	WBRZ-TV (ABC), WBRT-TV Cox Sports Television, Cox 4
Alexandria	KLAX-TV (ABC)
Lafayette	KLAF-TV (UPN), KADN-TV (FOX)
Lake Charles	KLOC-TV
Monroe	KARD-TV (FOX)
Morgan City	KWBJ-TV (WB)
New Orleans	WWL-TV (CBS)
Shreveport	KMSS-TV (FOX), KSHV-TV
Houston, Texas	Comcast Sports Net Houston
Pascagoula, Miss.	WKFK-TV
Regional	Cox Sports TV
Regional	FOX Sports Southwest

Affiliates are subject to change. Visit LSUsports.net/tvaffiliates to view weekly air dates by affiliate.



the exclusive marketing and multimedia rights partner of **LSU** Athletics.

LSU Sports Properties provides a single-source outlet, integrating sponsorship opportunities to deliver corporate partnership programs across all of LSU Athletics marketing platforms for the family of loyal corporate and media partners of LSU Athletics.



On-Premise Signage

- ▶ Tiger Stadium
- ▶ Maravich Center
- ▶ Alex Box Stadium
- ▶ Olympic Sports Venues



Game Sponsorships

- ▶ Football
- ▶ Men's Basketball
- ▶ Women's Basketball
- ▶ Baseball

FOR MORE INFORMATION REGARDING SPONSORSHIP OPPORTUNITIES WITH LSU ATHLETICS, PLEASE CONTACT





Hospitality

- ▶ Tickets
- ▶ Tiger One Village presented by Zatarain's
- ▶ Away Game Trips
- ▶ Special Events



Media

- ▶ Radio
- ▶ Television
- ▶ Print
- ▶ Internet/Social Media



Marketing Rights

- ▶ Consumer Promotions
- ▶ Event Marketing
- ▶ Logo Usage
- ▶ Official Status

LSU Sports Properties
Athletic Administration Building
BuildingBaton Rouge, LA 70803



225.578.8883

 @LSUSP

LSUsports.net/lsp



It's called the "Miles Method" and it's the mission of LSU football program under 11th-year head coach Les Miles. The "Miles Method" lays the foundation for the organization and it calls for LSU to run the finest football program in the country, one where players can have an experience that's second to none and gives them every opportunity to compete for championships on the field, earn a degree and grow personally by giving back to the community.

In his 11th year, the "Miles Method" has proved to be a winning formula as the Tigers have won more games than any program in the Southeastern Conference over that span (103), while capturing a pair of SEC titles (2007, 2011), played in 10 bowl games, including the BCS National Championship Game twice. LSU won the BCS title in 2007, a year after beating Notre Dame in the Sugar Bowl.

Since Miles took over in 2005, LSU has registered five top 10 finishes with three coming in the top five, won double-figure games seven times, produced 20 first-team All-Americans and had players win 11 national awards. LSU also leads the SEC with 64 NFL Draft picks during that span, which includes 13 first round selections. LSU led the nation with nine NFL Draft picks in 2014, which tied the school record set in 2013.

Miles has climbed to second in school history in career victories with 103, trailing only Charles McClendon, who won 137 games in 18 years with the Tigers. Miles is also the only coach in LSU history to beat Auburn, Florida and Alabama in same season - and he's done it now three times - and in 2005, he became the only first-year coach in SEC history to lead a team to the league's title game.

In the classroom, 215 football players have earned their degree since Miles took over, and two out of the last three years LSU has ranked No. 2 in the SEC in graduation rates, trailing only Vanderbilt. Under Miles, LSU has produced over 150 players who have earned SEC Academic Honor Roll status.

LSU's community service presence is impactful as football players routinely donate time giving back to the Baton Rouge area through a variety of avenues, including appearances at schools, hospitals and



Les and Kathy Miles with their four children, Ben, Smacker, Macy and Manny.

many other charitable causes. It's through these community service ventures that Miles and his team get a better understanding of what it means to wear an LSU uniform and the impact that can be made on those who are less fortunate.

As Miles heads into his 11th season with the Tigers and coming off a recruiting class that was ranked among the Top 10 in the nation, the foundation for LSU football is stronger than ever. With wins coming at a record-setting pace, graduation rates among the best for any public university in the SEC, and with eight-straight recruiting classes rated among the top 10 in the nation, including the nation's No. 1 group in 2009, Miles and the Tigers continue to solidify their standing as one of the premier programs in college football, setting a standard that has the rest of the nation chasing.

- 2011 NATIONAL COACH OF THE YEAR
- SECOND-WINNINGEST COACH IN LSU HISTORY WITH 103 VICTORIES
- SEC CHAMPIONS IN 2007 AND 2011
- BCS NATIONAL CHAMPIONS IN 2007
- PERFECT 13-0 REGULAR-SEASON RECORD IN 2011



the exclusive marketing and multimedia rights partner of **LSU** Athletics



TEAM LSU CORPORATE PARTNERS



TIGER PARTNERS



FOR MORE INFORMATION REGARDING SPONSORSHIP OPPORTUNITIES
WITH LSU ATHLETICS, PLEASE CONTACT:

LSU Sports Properties
LSU Athletic Administration Building
Baton Rouge, LA 70803

225.578.8883

New for 2015

LSU SPORTS MOBILE APPS

The Official iPad, iPhone and Android Apps of LSU Athletics



PRESENTED BY

 **BASF**
We create chemistry

**Official news, schedules,
scores, rosters and live stats.**

Upgrade to LSU sports Mobile+ to get video highlights and live audio broadcasts*

**live audio available with Geaux Zone membership*

 Download on the
App Store

GET IT ON
 **Google play**

www.LSU sports.net/apps

LSUsports.net



SONGS OF LSU

"Fight For LSU" (LSU Fight Song)

Like Knights of old, Let's fight to hold
The glory of the Purple Gold.
Let's carry through, Let's die or do
To win the game for dear old LSU.
Keep trying for that high score;
Come on and fight,
We want some more, some more.
Come on you Tigers, Fight! Fight! Fight!
for dear old L-S-U.
RAH!

"Tiger Rag" (Hold That Tiger)

Long ago, way down in the jungle
Someone got an inspiration for a tune,
And that jingle brought from the jungle
Became famous mighty soon.
Thrills and chills it sends thru you!
Hot! so hot, it burns you too!
Tho' it's just the growl of the tiger
It was written in a syncopated way,
More and more they howl for the 'Tiger'
Ev'ry where you go today
They're shoutin'
Where's that Tiger! Where's that Tiger!
Where's that Tiger! Where's that Tiger!
Hold that Tiger! Hold that Tiger!
Hold that Tiger!

"Touchdown for LSU"

Tigers! Tigers! They've come to town,
They fight! They fight! Call a first down,
Just look them over, and how they can go,
Smashing the line with runs and passes
high and low.
Touchdown! Touchdown! It's Tigers' score.
Give them hell and a little bit more.
Come on you Tigers, Fight them, you Tigers,
Touchdown for LSU.
Rah! U. Rah!

LSU Alma Mater

Where stately oaks and broad magnolias
shade inspiring halls,
There stands our dear Alma Mater
who to us recalls
Fond memories that waken in our hearts
a tender glow,
And make us happy for the love
that we have learned to know.

All hail to thee our Alma Mater,
molder of mankind,
May greater glory, love unending
be forever thine.
Our worth in life will be thy worth
we pray to keep it true,
And thy spirit dwell in us forever...L-S-U.

"Hey Fighting Tigers"

Hey, Fightin' Tigers, Fight all the way
Play Fightin' Tigers, win the game today.
You've got the know how,
you're doing fine,
Hang on to the ball as you hit the wall
And smash right through the line
You've got to go for a touchdown
Run up the score.
Make Mike the Tiger stand right up and roar.
ROAR!
Give it all of your might as you fight tonight
and keep the goal in view.
Victory for L-S-U!

(Adapted from the original
composition 'Hey, Look Me Over'
from the Broadway production 'Wildcat'.)

LSU FOOTBALL NUMERICAL ROSTER

NO.	NAME	POS.	HT.	WT.	CL./EXP.	HOMETOWN (HS/PREVIOUS SCHOOL)
1	Donte Jackson	DB	5-11	168	Fr.-HS	Metairie, La. (Riverdale HS)
2	Kevin Toliver II	CB	6-2	192	Fr.-HS	Jacksonville, Fla. (Trinity Christian HS)
3	Tyron Johnson	WR	6-2	192	Fr.-HS	New Orleans, La. (Warren Easton HS)
4	Nick Brossette	RB	6-0	214	Fr.-HS	Baton Rouge, La. (University HS)
5	Derrius Guice	RB	5-11	216	Fr.-HS	Baton Rouge, La. (Catholic HS)
6	Brandon Harris	QB	6-3	188	So.-1L	Bossier City, La. (Parkway HS)
7	Leonard Fournette	RB	6-1	230	So.-1L	New Orleans, La. (St. Augustine HS)
8	Trey Quinn	WR	6-0	194	So.-1L	Lake Charles, La. (Barbe HS)
9	John Diarse	WR	6-0	210	So.-1L	Monroe, La. (Neville HS)
10	Anthony Jennings	QB	6-2	216	Jr.-2L	Marietta, Ga. (Marietta HS)
10	Austin Suits	S	6-1	202	So.-SQ	Baton Rouge, La. (Parkview Baptist HS)
11	Lamar Louis	LB	5-11	229	Sr.-3L	Breaux Bridge, La. (Breaux Bridge HS)
11	Brandon Bergeron	QB	6-2	200	Jr.-SQ	Lafayette, La. (St. Thomas More HS)
12	Justin McMillan	QB	6-1	177	Fr.-HS	Cedar Hill, Texas (Cedar Hill HS)
12	Micah Dickens	CB	5-9	179	So.-SQ	Dry Prong, La. (Grant HS)
13	Dwayne Thomas	DB	6-0	182	Jr.-2L	New Orleans, La. (O.P. Walker HS)
13	Jake Clise	QB	6-2	212	So.-SQ	Baltimore, Md. (Loyola HS)
14	Caleb Lewis	QB	6-4	211	Fr.-HS	Lakeland, Fla. (Victory Christian Academy)
14	Trent Domingue	PK/P	6-1	170	Jr.-1L	Mandeville, La. (St. Paul's HS)
14	Lionel Williams	S	6-2	205	So.-SQ	Chesterfield, Va. (LC Byrd HS)
15	Malachi Dupre	WR	6-3	187	So.-1L	River Ridge, La. (John Curtis HS)
16	Tre'Davious White	DB	5-11	191	Jr.-2L	Shreveport, La. (Green Oaks HS)
16	Brad Kragthorpe	QB	5-11	200	Sr.-1L	Tulsa, Okla. (Idaho State)
17	Xavier Lewis	CB	6-0	186	Fr.-HS	LaPlace, La. (East St. John HS)
17	Tiger Scheyd	QB	6-0	179	Fr.-RS	Miramar Beach, Fla. (Ft. Walton Beach HS)
19	Derrick Dillon	WR	5-11	174	Fr.-HS	Franklinton, La. (Pine HS)
21	Avery Peterson	WR	6-2	200	So.-SQ	Pompano Beach, Fla. (Hargrave Military (Va.))
22	Ronnie Feist	LB	6-1	224	Jr.-1L	Edgard, La. (West St. John HS)
22	Miquel James	WR	5-8	161	So.-SQ	Kentwood, La. (Jewell Sumner HS)
23	Corey Thompson	S	6-2	218	Jr.-2L	Missouri City, Texas (Lawrence Elkins HS)
24	Ed Paris	DB	6-1	208	So.-1L	New Orleans, La. (Timberview (Texas) HS)
25	Jeremy Cutrer	S	6-3	162	Jr.-JL	Kentwood, La. (Mississippi Gulf Coast CC)
25	Reshaud Henry	RB	5-8	195	So.-SQ	Ponchatoula, La. (Ponchatoula HS)
26	John Battle	S	6-1	186	So.-SQ	Hallandale, Fla. (Hallandale HS)
27	Lanard Fournette	RB	5-10	185	Fr.-HS	New Orleans, La. (St. Augustine HS)
27	Brandon Surtain	DB	5-8	177	Jr.-SQ	Baton Rouge, La. (McKinley)
28	Jalen Mills	DB	6-0	194	Sr.-3L	DeSoto, Texas (DeSoto HS)
29	Rickey Jefferson	S	6-0	204	Jr.-2L	St. Rose, La. (Destrehan HS)
30	Kyle Pfau	K	5-10	191	Fr.-RS	Spring, Texas (Klein HS)
31	Josh Growden	P	6-1	192	Fr.-HS	Sydney, Australia (Clare HS)
31	Bennett Schiro	FB	5-11	214	So.-SQ	New Orleans, La. (Jesuit HS)
33	Jamal Adams	S	6-0	206	So.-1L	Lewisville, Texas (Hebron HS)
33	Trey Gallman	FB	6-1	256	Fr.-RS	Prairieville, La. (Dutchtown HS)
34	Darrel Williams	RB	6-0	230	So.-1L	Marrero, La. (John Ehret HS)
34	Jordan Triche	DB	5-9	162	Sr.-SQ	Edgard, La. (West St. John HS)
35	Devin Voorhies	LB	6-2	208	So.-1L	Woodville, Miss. (Wilkinson County HS)
36	Cameron Gamble	PK	5-11	190	So.-1L	Flower Mound, Texas (Flower Mound HS)
38	Jamie Keehn	P	6-4	220	Sr.-3L	Queensland, Australia (Rockhampton Grammar)
39	Russell Gage	DB	6-0	180	So.-SQ	Baton Rouge, La. (Redemptorist HS)
39	Lenny Breda	WR	5-9	167	So.-SQ	Lake Charles, La. (St. Louis HS)
40	Duke Riley	LB	6-1	218	Jr.-2L	Buras, La. (John Curtis HS)
41	David Ducre	FB	6-0	239	Fr.-HS	Slidell, La. (Lakeshore HS)
42	Colby Delahoussaye	PK	5-10	176	Jr.-2L	New Iberia, La. (New Iberia HS)
43	Foster Moreau	TE	6-5	237	Fr.-HS	New Orleans, La. (Jesuit HS)
43	Tommy LeBeau	S	6-0	185	Sr.-2L	Monroe, La. (Ouachita Christian HS)
44	Tony Upchurch	FB	6-1	230	Fr.-RS	Pearland, Texas (Glenda Dawson HS)
45	Deion Jones	LB	6-1	220	Sr.-3L	New Orleans, La. (Jesuit HS)
45	Josh Tharp	TE/P	6-2	208	So.-SQ	Erin, Tenn. (Houston County HS)

LSU FOOTBALL NUMERICAL ROSTER

NO.	NAME	POS.	HT.	WT.	CL./EXP.	HOMETOWN (HS/PREVIOUS SCHOOL)
46	Tashawn Bower	DE	6-5	237	Jr.-2L	Somerville, N.J. (Immaculata HS)
46	John David Moore	FB	6-3	229	So.-1L	Ruston, La. (Ruston HS)
47	Bry'Kiethon Mouton	TE	6-1	250	Fr.-HS	Lafayette, La. (Acadiana HS)
48	Donnie Alexander	LB	6-1	201	So.-1L	New Orleans, La. (Karr HS)
49	Arden Key	DE	6-6	215	Fr.-HS	Atlanta, Ga. (Hapeville Charter School)
50	Reid Ferguson	SNP	6-2	236	Sr.-3L	Buford, Ga. (Buford HS)
50	Christian Pittman	LB	5-11	205	Sr.-SQ	New Orleans, La. (Brother Martin HS)
51	Jonathan Rucker	LB	6-0	205	So.-SQ	Ponchatoula, La. (Ponchatoula HS)
52	Kendell Beckwith	LB	6-2	245	Jr.-2L	Clinton, La. (East Feliciana HS)
53	Blake Ferguson	SNP	6-3	215	Fr.-HS	Buford, Ga. (Buford HS)
53	Grant Leger	LB	6-2	218	Sr.-SQ	Metairie, La. (Jesuit HS)
57	Davon Godchaux	DT	6-4	298	So.-1L	Plaquemine, La. (Plaquemine HS)
57	Cody Townsend	OL	6-2	274	Jr.-SQ	Marrero, La. (John Ehret HS)
58	Sione Teuhema	DE	6-4	232	So.-1L	Keller, Texas (Keller HS)
58	Jabrail Abdul-Aziz	OL	6-2	279	So.-HS	Baton Rouge, La. (Broadmoor HS)
59	John Ballis	SNP	6-1	215	Jr.-Trf.	Houston, Texas (Episcopal HS/Kentucky)
60	Marcus Roberts	DL	5-11	302	Jr.-RS	Baton Rouge, La. (McKinley HS)
61	Alex Cheramie	OL	6-0	280	So.-SQ	Cypress, Texas (Cypress Ranch HS)
62	Hunter Burns	LB	5-11	206	So.-SQ	Wilmer, Ala. (Mary Montgomery HS)
62	Justin Mikush	OL	6-3	347	Fr.-RS	Tomball, Texas (Klein Oak HS)
63	K.J. Malone	OL	6-4	289	So.-1L	Ruston, La. (Cedar Creek HS)
64	William Clapp	OL	6-5	295	Fr.-RS	New Orleans, La. (Brother Martin HS)
65	Jerald Hawkins	OT	6-6	309	Jr.-2L	Baldwin, La. (West St. Mary HS)
66	Toby Weathersby	OL	6-5	303	Fr.-HS	Houston, Texas (Westfield HS)
67	Jevonte Domond	OT	6-6	310	Jr.-SQ	Glendale, Ariz. (Maricopa HS/Glendale CC)
68	Chidi Valentine-Okeke	OL	6-6	315	Fr.-HS	Decatur, Ga. (Faith Baptist Christian)
69	Turner Simmers	OL	6-5	257	Fr.-RS	Prairieville, La. (St. Amant HS)
70	George Brown Jr.	OL	6-6	283	Fr.-HS	Cincinnati, Ohio (Winton Woods HS)
71	Jonah Austin	OG	6-6	330	Sr.-1L	New Orleans, La. (St. Augustine HS)
72	Andy Dodd	OL	6-4	336	So.-1L	Lindale, Ga. (Pepperell HS)
73	Adrian Magee	OL	6-5	366	Fr.-HS	Franklinton, La. (Franklinton HS)
74	Vadal Alexander	OG	6-6	320	Sr.-3L	Buford, Ga. (Buford HS)
75	Maea Teuhema	OL	6-4	323	Fr.-HS	Keller, Texas (Keller HS)
76	Josh Boutte	OL	6-5	340	Jr.-1L	New Iberia, La. (Westgate HS)
77	Ethan Pocic	C/OL	6-7	301	Jr.-2L	Lemont, Ill. (Lemont Township HS)
78	Garrett Brumfield	OL	6-4	309	Fr.-RS	Baton Rouge, La. (University HS)
79	Travonte Valentine	DT	6-4	350	Fr.-RS	Hialeah, Fla. (Champagnat Catholic HS)
81	Colin Jeter	TE	6-6	236	Jr.-1L	Longview, Texas (Longview HS/Kilgore College)
82	D.J. Chark	WR	6-2	184	So.-SQ	Alexandria, La. (Alexandria Senior HS)
83	Travin Dural	WR	6-2	192	Jr.-2L	Breaux Bridge, La. (Breaux Bridge HS)
84	Hanner Shipley	TE	6-5	284	Fr.-HS	Meadowlakes, Texas (Marble Falls HS)
85	Dillon Gordon	TE	6-4	295	Sr.-3L	Edgard, La. (John Curtis HS)
86	Jazz Ferguson	WR	6-5	214	Fr.-HS	St. Francisville, La. (West Feliciana HS)
87	Kevin Spears	WR	6-3	195	So.-SQ	New Orleans, La. (Holy Cross HS)
88	Jacory Washington	TE	6-5	221	Fr.-RS	Westlake, La. (Westlake HS)
89	DeSean Smith	TE	6-5	242	Jr.-2L	Lake Charles, La. (Barbe HS)
90	Maquedius Bain	DT	6-4	299	So.-1L	Ft. Lauderdale, Fla. (University School)
91	Christian LaCouture	DT	6-5	300	Jr.-2L	Lincoln, Neb. (Lincoln Southwest HS)
92	Lewis Neal	DE	6-1	255	Jr.-2L	Wilson, N.C. (James B. Hunt HS)
93	M.J. Patterson	DE	6-3	231	So.-SQ	Winnfield, La. (Winnfield HS)
94	Isaiah Washington	DE	6-4	225	Fr.-HS	New Orleans, La. (Karr HS)
95	Quentin Thomas	DT	6-4	303	Sr.-2L	Breaux Bridge, La. (Breaux Bridge HS)
96	Jordan Harper	DE	6-2	228	Jr.-SQ	New Orleans, La. (Rummel HS)
97	Frank Herron	DT	6-4	278	So.-SQ	Memphis, Tenn. (Memphis Central HS)
98	Deondre Clark	DE	6-3	244	So.-1L	Oklahoma City, Okla. (Douglass HS)
99	Greg Gilmore	DT	6-5	305	So.-SQ	Hope Mills, N.C. (South View HS)

GEAUX **X** ZONE

THE BEST WAY *TO EXPERIENCE*

LSU FOOTBALL



LIVE AUDIO

ON-DEMAND HD HIGHLIGHTS

LIVE PRESS CONFERENCES

COACHES' SHOWS

The Official Website of LSU Athletics powers the Geaux Zone on gamedays. Members have access to live behind-the-scenes video, live audio, on-demand HD highlights, live press conferences and coaches' shows. [Join now at www.LSUsports.net/join](http://www.LSUsports.net/join)

LSUsports.net



RESPONSIBILITY OF THE INSTITUTION

Each institution shall comply with all applicable rules and regulations of the Association (NCAA) in the conduct of its intercollegiate athletics programs. It shall monitor its programs to assure compliance and to identify and report to the Association instances in which compliance has not been achieved. In any such instance, the institution shall cooperate fully with the Association and shall take appropriate corrective actions. Members of an institution's staff, student-athletes, and other individuals and groups representing the institution's athletics interests shall comply with the applicable Association rules, and the member institution shall be responsible for such compliance. [NCAA Constitution 2.8.1]

REPRESENTATIVE OF ATHLETICS INTEREST (BOOSTERS)

A "Representative of the Institution's Athletics Interest" (booster) is anyone who is known (or should be known) by a member of the institution's executive or athletic administration to:

- Participate in or have been a member of a sport support group or a booster club.
- Make or have made a donation to Louisiana State University Athletics or Tiger Athletic Foundation.
- Provide or have helped arrange employment for student-athletes or provided benefits to enrolled student-athletes.
- Have been involved in promoting the University's athletics program, in any way.
- Participated as a varsity athlete at Louisiana State University.

Please note: Once an individual is identified as a "Representative of the Institution's Athletics Interest," (booster) the person retains that identity forever.

CONSEQUENCES TO BOOSTERS FOR NCAA VIOLATIONS

- Institutions are required by the NCAA to notify boosters of consequences regarding rules violations. Boosters found in violation of NCAA rules are subject to losing benefits and privileges, including season tickets.
- The NCAA Committee on Infractions has processed cases in which penalties have included both the disassociation of boosters with the institution and the loss of season ticket privileges.

RECRUITMENT OF PROSPECTIVE STUDENT-ATHLETES

A prospective student-athlete is defined by the NCAA as any person who has begun classes for the ninth grade (seventh grade in men's basketball).

A prospective student-athlete remains a prospect even after he or she has signed a National Letter of Intent or accepts an offer of financial aid to attend Louisiana State University.

The prospective student-athlete remains a prospect until he or she reports for the first day of classes for a regular term (fall or spring) or attends classes during the summer prior to initial full-time enrollment.

RECRUITING CONTACTS

All in-person, on- and off-campus recruiting contacts with a prospect or the prospect's relatives or legal guardian(s) shall be made only by authorized institutional coaches or staff members. A coach is not permitted to recruit off-campus until he or she has been certified on an annual basis as to knowledge of applicable recruiting rules.

A contact is defined as any face-to-face encounter between a prospect or the prospect's relatives or legal guardian(s) during which time any dialogue in excess of an exchange of a greeting occurs. Boosters are prohibited from contacting a prospect or the prospect's relatives or legal guardian(s) to encourage the prospect to participate in intercollegiate athletics at Louisiana State University.

The following are specific restrictions that apply to boosters:

- You are prohibited from telephoning or writing to a prospect or the prospect's relatives or legal guardian(s).
- You are prohibited from providing entertainment during the prospect's official visit.
- You are prohibited from providing transportation for a prospect or the prospect's relatives or legal guardian(s) to visit our campus.
- You are prohibited from providing the prospect or the prospect's relatives or legal guardian(s) with money or financial aid of any kind.

RULE OF THUMB #1

Do not interject yourself into the recruiting process.

As a booster, you are permitted to:

- Notify our coaches about prospects in your area that may be strong additions to our team.
- Attend high school or two year college athletic contests or other events where prospects may compete; however, you may not contact the prospect or the prospect's relatives or legal guardian(s).
- Continue existing friendships with families of prospects, but you may not attempt to recruit the prospect.

Benefits for Enrolled Student-Athletes

Receipt of an award, benefit or expenses allowance by a student-athlete, not authorized by the NCAA, renders the student-athlete ineligible for athletics competition.

An extra benefit is any special arrangement by an institutional employee or a representative of the institution's athletics interest to provide a student-athlete or the student-athlete's relative or friend a benefit not expressly authorized by NCAA legislation.

In general, boosters may not provide anything or make special arrangements for student-athletes (and prospective student-athletes) and the student-athletes' friends or relatives that are not available to the general student population. Examples of extra benefits not allowed by NCAA rules include, but are not limited to, the following:

- Providing cash or loans in any amount, or signing or co-signing for a loan.
- Providing gifts of any kind, including birthday cards and holiday gifts.
- Providing special discounts for goods and services (e.g., movie tickets, car repair, legal services, clothing, haircuts, meals).
- Providing the use of an automobile, telephone.
- Providing free or reduced rent or housing.
- Providing student-athletes money for the exchange of complimentary tickets.

RULE OF THUMB #2

Do not provide student-athletes or their friends or relatives with a benefit or service without permission from the athletics department.

As a representative of the institution's athletics interest, you are permitted to:

- Invite a student-athlete into your home for an occasional meal (once a semester), but please coordinate such activity with the respective head coach or with the Compliance Office. A request form must be completed and approved by the LSU Compliance Office prior to inviting the student-athlete.
- Meet with and receive autographs from student-athletes during LSU-sponsored pre-season events (i.e. Fan Photo Day or Meet the Team). Please be aware it is not permissible for you to sell the autographs or use the autographs to raise money for a special project.

If there are any questions at all, please contact LSU's Athletics Compliance Office at (225) 578-3891.

RULE OF THUMB #3

Do not hesitate to contact the athletics department with a compliance-related question and always ask before you act!

2015 OFFICIAL LSU GEAR



Shop online at **LSU** shop.net
or visit us on campus.

TRADITION FUND CONTRIBUTION MAP

■ Sideline & Tiger Terrace 1	Donation	Cost	■ South Endzone 3	Donation	Cost
■ Sideline & Tiger Terrace 2	\$1,025	\$425	■ East & West Chairbacks 1	\$210	\$425
■ Sideline & Tiger Terrace 3	\$975	\$425	■ East & West Chairbacks 2	\$525	\$425
■ Low Sidelines (Rows 1-2)	\$925	\$425	■ West Upper Benchbacks	\$420	\$425
■ North & South Endzone 1	\$575	\$425	■ East & West Upper Bench	\$225	\$425
■ North & South Endzone 2	\$300	\$425	■ East & West Upper Bench	\$0	\$360
■ South Upper Deck	\$260	\$425	■ North Accessible Seats	\$210	\$425
	N/A	N/A	■ Suite and Club Levels	TAF	\$425



Note:

Tradition Fund contributions are required in addition to the cost of the season ticket.

FIVE-TIME ALL-AMERICAN
**ASHLEIGH
GNAT**



**THE
BEST TICKET
IN TOWN!**

LSUtix.net



GET YOUR
**SEASON
TICKETS
NOW!**

2015-16



**MEN'S & WOMEN'S
BASKETBALL**

**PRICES
AS LOW AS \$100**

LSUtix.net



JOIN TAF TODAY

TAF MEMBERSHIP LEVELS

We are on a quest to make the LSU athletic program the best in America and we need your help to accomplish that goal!

FIGHTING TIGERS PLATINUM MEMBERSHIP

\$25,000 Philanthropic Gift a year

- 3 TAF Membership Priority Points
- 2 points per every \$1,000 donated
- 17 bonus points for reaching \$25,000 philanthropic level in a calendar year
 - *Example - Total of 70 points for a gift of \$25,000*
- TAF Membership Card
- Opportunity to attend TAF Football Pre-Game Parties
- TAF Window Decal
- TigerLand News subscription
- Annual invitation to exclusive tailgate parties

*Applies to donations received after January 1, 2008

FIGHTING TIGERS GOLD MEMBERSHIP

\$10,000 Philanthropic Gift a year

- 3 TAF Membership Priority Points
- 2 points per every \$1,000 donated
- 12 bonus points for reaching \$10,000 philanthropic level in a calendar year
 - *Example - Total of 35 points for a gift of \$10,000*
- TAF Membership Card
- Opportunity to attend TAF Football Pre-Game Parties
- TAF Window Decal
- TigerLand News subscription
- Annual invitation to exclusive tailgate parties

*Applies to donations received after January 1, 2008

FIGHTING TIGERS MEMBERSHIP

\$5,000 Philanthropic Gift a year

- 3 TAF Membership Priority Points
- 2 points per every \$1,000 donated
- 7 bonus points for reaching \$5,000 philanthropic level in a calendar year
 - *Example - Total of 20 points for a gift of \$5,000*
- TAF Membership Card
- Opportunity to attend TAF Football Pre-Game Parties
- TAF Window Decal
- TigerLand News subscription
- Annual invitation to exclusive tailgate parties

*Applies to donations received after February 20, 2003

TAF CHAMPIONS FUND GOLD MEMBERSHIP

\$100 Philanthropic Gift a year

- 3 TAF Membership Priority Points
- 2 points per every \$1,000 donated
- TAF Membership Card
- Opportunity to attend TAF Football Pre-Game Parties
- TAF Window Decal
- TigerLand News subscription

*Applies to donations received after January 1, 2002

TAF CHAMPIONS FUND PURPLE MEMBERSHIP

\$50 Philanthropic Gift a year

- 1 TAF Membership Priority Point
- 2 points per every \$1,000 donated
- TAF Membership Card
- Opportunity to attend TAF Football Pre-Game Parties
- TAF Window Decal
- TigerLand News subscription

*Applies to donations received after January 1, 2002

NOTE - Every donation above the membership amount earns incremental priority points.

1.800.644.4823 • www.lsutaf.org



THE NEW LSU TENNIS FACILITY

Opening in the fall of 2015, the new LSU Tennis Facility will be one of the top facilities in the country! Rivaling its counterparts in the SEC, the new LSU Tennis Facility will give both the men's and women's tennis teams the competitive advantage they deserve both on the court and on the recruiting trail. With more than a dozen indoor and outdoor courts, the facility will allow both the men's and women's tennis teams opportunities to practice rain or shine. Locker rooms and coaches' offices will provide a new home for the LSU Tennis programs.

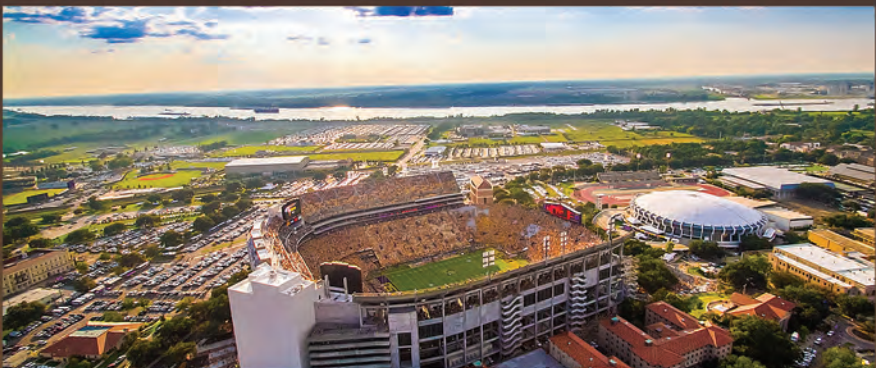
You can still help support the building and maintenance of this project, by visiting www.Isutaf.org/LSUTennisFacility.



THE NEW LSU GYMNASTICS PRACTICE FACILITY

The future home of the LSU Gymnastics team will be a state-of-the-art training and practice facility. The new practice facility will include: team locker room, vaulting strips with pits, training room, bar training area with pits, beam practice area, trampoline area, team squad room, floor exercise and dance studio. After years of competing at the highest level, this dedicated facility is sure to catapult the LSU Gymnastics program into an elite status. This facility presents opportunities for donors to be permanently recognized as contributors to the development and construction of this important project.

If you are interested in supporting the project or finding out additional information about donor recognition opportunities, please visit <https://www.Isutaf.org/LSUGymnasticsPracticeFacility>.



CAPITAL PROGRAMS FUND

The TAF Capital Programs Fund allows the Tiger Athletic Foundation to use donations where they are needed most. This fund helps to support a vast majority of current projects while establishing funding for upcoming and future projects. The Tiger Athletic Foundation has undertaken a variety of building projects across campus to support our various sports and the student-athletes. The Capital Programs Fund ensures that these projects will be well maintained along with providing the initial funding for new projects. Visit www.Isutaf.org/TAFCapitalProgramsFundUpdate for more information.

Building the Future of LSU Athletics

the exclusive club for

LSU TIGER FANS

ages 12 & Under



JOIN FOR JUST A \$ **15**
ONE-TIME
MEMBERSHIP FEE

REGISTER TODAY!

www.LSUsports.net/MikesKidsClub

PLEASE STAY OFF THE FIELD!

The Southeastern Conference takes seriously the issue of fans "storming the field" after major victories. While the enthusiasm of the fans is admirable, it has caused serious injury to some fans and student-athletes and can result in unwarranted violence and vandalism.

The SEC has adopted the following principles regarding fan access to competition areas:

In all sports, access to the competition area shall be limited to participating student-athletes, coaches, officials, support personnel and properly-credentialed individuals at all times.

For the safety of participants and spectators alike, at no time before, during or after a contest shall spectators be permitted to enter the competition area.

Penalties against individuals who improperly enter the competition area shall include, but not be limited to, expulsion from the facility, arrest for trespassing, and the loss of future ticket privileges. In addition to these three penalties, violators who are students shall be subject to student disciplinary measures.

PENALTIES FOR INSTITUTIONAL VIOLATIONS

In the sports of football, men's basketball and women's basketball, at the discretion of the Commissioner, schools in the Southeastern Conference may be fined the following amounts if fans at their respective institutions enter the area of competition before, during or after an athletic contest:

1ST OFFENSE:
institutional fine of \$50,000

2ND OFFENSE:
institutional fine of up to \$100,000

3RD OFFENSE:
institutional fine of up to \$250,000

Please represent LSU with pride and thank you for your cooperation.

ADVERTISER INDEX

PAGE ADVERTISER

1	New York Life
2	Capital One Bank
4	Lee Michaels
8	McDonald's
10	Peoples Health
12	Anheuser-Busch
14	Lexus
16	Our Lady of the Lake
18	Crawler Supply
20	J. Calderara
22	Dixie RV
24	Brand Energy and Infrastructure
25	Dow Chemical
26	TJ Ribs
28	Campus Federal
29	L'auberge
30	Allstate
34	Louisiana Lottery
36	First South Farm Credit
37	Northwestern Mutual
38	Valley View Agri Systems
40-41	LSU Sports Properties
42	Capital One Bank
44	Team LSU
45	Certified Alarms
46	LSU App presented by BASF
48	Ascension Ready Mix
49	Anheuser-Busch
52	The Geaux Zone
53	Road Runner Towing
54	Kean Miller
55	Tabasco
56	Blue Runner Foods
	Acadian Ambulance
57	Chops Specialty Meats
60	Guaranty Broadcasting
61	LSUShop.net
62	Louisiana CAT
63	Gulf Coast Office Products

65	International Brotherhood of Electrical Workers
66	Ford
67	LSU Ticket Office
68	WBRZ
69	Papa John's Pizza
72	Manda Fine Meats
73	Acme Oyster House
75	Mike's Kids' Club
78	Go Auto Insurance
79	The Advocate

PRESENTING SPONSORS

Front Cover- International Brotherhood of Electrical Workers
 Inside Front Cover- Visit Baton Rouge
 Inside Back Cover- Tony Chachere's
 Back Cover- HGE Equipment
 Poster- Paretti Land Rover

For information regarding sponsorship opportunities with LSU Athletics, please contact LSU Sports Properties (225) 578-8883



Tiger One Village provides LSU Fans the ultimate pre-game atmosphere.



ALLOWABLE ITEMS THE FOLLOWING ITEMS ARE ALLOWED AT ENTRY TO TIGER STADIUM.



**Purses/Bags
Smaller than
8.5" x 11"**



Stadium Seats

Please be cognizant of the size of your stadium seat. Any seat that impedes on the comfort of a fan in an adjacent seat is prohibited. **Acceptable stadium seats should be 16 inches wide or smaller.**

LSUTigerSeatback.com

Order pre-installed vinyl seatbacks that will remain in place for the entire season. The plan offers convenience to fans who will no longer need to bring their own seatbacks to football games.

Order by Phone: 1-800-601-1920



NO
**Purses/Bags
Larger than
8.5" x 11"**



Binocular Cases
(with binoculars)



Diaper Bags
(with Baby or Child)

NON-ALLOWABLE ITEMS THE FOLLOWING ITEMS ARE **NOT** ALLOWED AT ENTRY TO TIGER STADIUM.



No Backpacks
of any size



No Alcoholic
Beverages



No Glass or
Plastic Bottles



No Food & Drink



No Video
Recording Devices



No Ice Chests
or Coolers

ALL ITEMS ARE SUBJECT TO SEARCH.
All Prohibited items will be denied at the gates & items may not be stored at or near Tiger Stadium.

LSU Athletics is **NOT** responsible for property damage or lost/stolen articles. All policies are available on LSUsports.net.

WELCOME TO TIGER STADIUM

LSU ATHLETICS SUPPORTS A SAFE AND FAN FRIENDLY ENVIRONMENT

THE FOLLOWING ITEMS ARE NOT ALLOWED IN TIGER STADIUM:

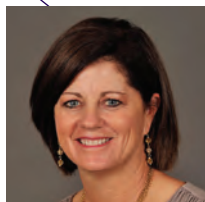
- Coolers, ice chests, bottles, cans, cups (or containers of any kind)
- Backpacks of any kind or variety (all sizes)
- All bags and any purses larger than 8.5" x 11"
- Outside food and drinks
- Any type of artificial noise makers - violators are subject to ejection
- Pets of any variety (except for certified service animals)
- Video cameras
- Weapons of any kind - including pocket knives, multi-function tools, and any items deemed inappropriate (no return of any confiscated weapons)
- Banners/Flags/Poles/projectiles of any kind (and/or any obtrusive/obstructive signage) - small handheld signs are subject to approval by LSU Administration

TIGER STADIUM POLICIES

- Smoking and the use of all tobacco products on the LSU Campus is prohibited. This prohibition applies to all individuals while on the LSU Campus, including faculty, staff, students, administrators, contractors, and visitors.
 - Cigarettes, e-cigarettes, cigars, smokeless tobacco, snuff, pipes, and chewing tobacco are not permitted
- All persons must have a ticket for admission - regardless of age
- No Re-entry - Anyone leaving the stadium must have a new unused ticket to re-enter
- All persons entering the facility are subject to search
- Items may not be stored at or near the gates of the stadium
 - Any and all items left unattended will be removed and discarded
- No oversized portable stadium seats or objects that may impede on the comfort/safety of others (including items such as portable heaters, fans, etc.)
- Tickets may not be resold on the stadium premises and/or the surrounding grounds (including the stadium parking lots)

ALL POLICIES AND ENFORCEMENT ARE SUBJECT TO THE DISCRETION OF **LSU** EVENT MANAGEMENT

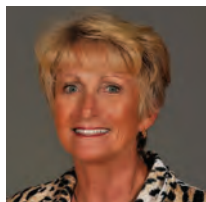
LSU HEAD COACHES



Karen Bahnsen

WOMEN'S GOLF

SEC Finish: 7th
National Rank: 6th
NCAA Championships Appearance



D-D Breaux

GYMNASTICS

SEC Finish: 2nd
National Rank: 4th
NCAA Championships Appearance



Russell Brock

SAND VOLLEYBALL

AVCA Championships Appearance



Jeff Brown

MEN'S TENNIS

SEC Finish: 7th overall
National Rank: 30th
NCAA Second Round



Nikki Caldwell

WOMEN'S BASKETBALL

SEC Finish: 6th
NCAA First Round



Fran Flory

VOLLEYBALL

SEC Finish: 3rd
NCAA Second Round



Dave Geyer

SWIMMING

SEC Finish: Men 9th, Women 5th
NCAA Championships Appearance



Johnny Jones

MEN'S BASKETBALL

SEC Finish: 3rd
NCAA First Round



Brian Lee

SOCCER

SEC Finish: 13th



Paul Mainieri

BASEBALL

SEC Finish: 1st in West, 1st Overall
SEC Champions
College World Series Appearance



Les Miles

FOOTBALL

SEC Finish: 5th in West,
7th overall



Julia Sell

WOMEN'S TENNIS

SEC Finish: 6th
National Rank: 23
SEC Tournament Semifinalists
NCAA Second Round



Doug Shaffer

DIVING

SEC Finish: Men 9th, Women 5th
NCAA Championship Appearance



Dennis Shaver

TRACK & FIELD

SEC Indoor: Men 5th, Women 5th
NCAA Indoor
SEC Outdoor: Men 4th, Women 4th
NCAA Outdoor
Cross Country
SEC Finish: Men 13th, Women 14th
NCAA Regionals: Men and Women



Beth Torina

SOFTBALL

SEC Finish: 4th
National Rank: 4th
Women's College World Series Appearance



Chuck Winstead

MEN'S GOLF

SEC Champions
National Champions