

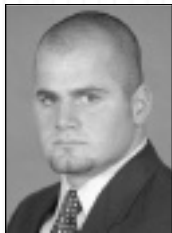


T
I
G
E
R
S

The Tigers return five starting position players and nine pitchers from their 2002 squad.

Player Profiles

LSU RECORDS HISTORY REVIEW COACHES TIGERS PREVIEW THIS IS LSU INTRO



41

Nate Bumstead

Pitcher
6-2,215,R-R,Jr.,JC
Las Vegas,Nev. (College of Southern Idaho)

Talented JUCO pitcher who may pitch as a mid-week starter this season . . . pitched extremely well in the Tigers' fall 2002 intra-squad games,posting a 0.78 ERA in 23.2 innings with seven walks,22 strikeouts and a .179 opponents' batting average.

JUNIOR COLLEGE

Played two seasons at the College of Southern Idaho in Twin Falls . . . recorded a 13-2 mark in 2002 at CSI with a 2.06 ERA and a .182 opponents' batting average . . . recorded 104 strikeouts in 96 innings on the mound . . . led the Scenic West Conference in wins and finished No.2 in strikeouts.

HIGH SCHOOL

Product of Durango High School in Las Vegas . . . helped lead his team to the 1999 state championship . . . named a second-team all-conference designated hitter in 1999.

PERSONAL

Full name is Nathan Brooks Bumstead . . . parents are Charlie Bumstead and Marla Kamerath . . . has two older brothers and one younger brother . . . credits his oldest brother, Kevin,with having the greatest influence upon his athletic career . . . born May 5,1982.



32

Rhett Buteau

Outfielder
5-9,165,L-R,So.,1L
Jeanerette,La.(Catholic-New Iberia HS)

Outstanding all-around athlete who lends depth to the Tigers' outfield . . . redshirted as a true freshman in 2001.

2002 SEASON

Appeared in seven games in a reserve role . . . 0-for-1 at the plate with one strikeout . . . also recorded one putout in the outfield.



HIGH SCHOOL

Lettered four years in baseball (centerfielder),four in track (javelin,200 meters) and three in basketball (guard) at Catholic High School in New Iberia,La. . . a three-time all-district and all-regional selection in baseball . . . also the state runner-up in the javelin competition . . . batted .450 in 2000 with seven homers and 50 RBI . . . for his career, he hit .425 with 15 homers and 125 RBI.

PERSONAL

Full name is Rhett Michael Buteau . . . parents are Steve and Liz Buteau . . . has one older sister and one younger brother . . . interests include hunting and fishing . . . credits his parents and his high school baseball coach,David Jordan,with teaching him to "work hard and set high goals" . . . chose to attend LSU to "get a good education at a top-notch school with a top-notch baseball program" . . . born June 15,1982.



33

Jason Determann

Pitcher
5-11,160,R-L,Fr.,RS
Baton Rouge,La. (Catholic HS)

Outstanding southpaw who suffered an elbow injury early in the 2002 campaign and missed the remainder of the season after undergoing surgery . . . was granted a medical redshirt,and he will pitch as a freshman in 2003 . . . prior to the injury, he was establishing himself as a mid-week starter and weekend middle reliever . . . should be a major contributor this season in the Tigers' rotation.

2002 SEASON

Injured his left elbow Feb. 20 in a starting role at Centenary and missed the rest of the season after undergoing surgery . . . was very effective in his outings prior to the injury, as he made two appearances - including the one start at Centenary - posting a 1-0 mark with a 1.29 ERA in seven innings . . . allowed four hits and one earned run with one walk and three strikeouts . . . earned his first career LSU win February 9 versus Birmingham-Southern,surrendering one run on two hits in four relief innings . . . in his first career start February 20 at Centenary, he allowed no runs on two hits with one walk and three strikeouts before leaving the game due to the injury.



HIGH SCHOOL

A three-year baseball letterman (pitcher/outfielder) at Catholic High School . . . posted a 10-5 mark and a 1.32 ERA in 2001, recording 136 strikeouts and seven walks in 100.1 innings . . . earned 2001 all-state and academic all-state honors . . . voted the District 5-5A Most Valuable Player . . . maintained a 3.92 GPA and was named the Catholic High Man of the Year . . . also received the Brent Pecue Memorial Scholarship.

PERSONAL

Full name is Jason Robert Determann . . . parents are Mike and Judy Determann . . . has one older brother, Greg, and one younger brother, Trenton . . . hobbies include golf, hunting and fishing . . . grandfather participated in four sports at LSU and also played professional baseball . . . plans to major in pre-medicine at LSU . . . born May 29, 1983.

DETERMANN'S LSU CAREER STATISTICS

Year	G-GS	W-L	ERA	SV	CG	SHO	IP	H	R	ER	BB	SO
2002*	2-1	1-0	1.29	0	0	0	7	4	1	1	1	3

*redshirt season

DETERMANN'S LSU CAREER HIGHS

Innings: 4.0 vs. Birmingham-Southern (2/9/02)
 Strikeouts: 3 at Centenary (2/20/02)
 Hits Allowed: 2 (twice)
 Runs: 1 vs. Birmingham-Southern (2/9/02)
 Earned Runs: 1 vs. Birmingham-Southern (2/9/02)
 Walks: 1 at Centenary (2/20/02)



30

Bobby DiLiberto

Infielder
5-10, 190, R-R, Jr., JC
Chicago, Ill. (Mesa CC)

Transfer from Mesa (Ariz.) Community College who should contend for playing time this season . . . launched a team-high three home runs and collected 12 RBI in LSU's fall 2002 intra-squad games.

JUNIOR COLLEGE

Enjoyed a stellar 2002 season at Mesa CC, batting .455 with 22 homers, 97 RBI, 29 doubles and 90 runs scored . . . named the MVP of JUCO Region I . . . posted a .410 career batting average at Mesa with 31 homers, 145 RBI and 39 doubles.

HIGH SCHOOL

Product of De La Salle High School in Chicago, where he earned all-state and all-Catholic League recognition . . . a member of the National Honor Society.

PERSONAL

Full name is Robert DiLiberto . . . parents are Joe and Lucy DiLiberto . . . has one older sister, Michelle . . . hobbies include golf, volleyball and racquetball . . . credits his parents with having the greatest influence upon his athletic career . . . plans to major in political science at LSU . . . chose to attend LSU because of "its great baseball tradition and to further my education" . . . born April 17, 1982.



13

Clay Dirks

Pitcher
6-4, 225, L-L, Fr., HS
Hernando, Miss. (Hernando HS)

Outstanding southpaw who has an extremely promising future at LSU . . . will be granted a medical redshirt in 2003 after undergoing surgery on his elbow . . . the 42nd round selection of the Philadelphia Phillies in the 2002 major league draft.

HIGH SCHOOL

Product of Hernando (Miss.) High School, where he earned all-state and all-DeSoto County recognition . . . posted an 8-3 mark with a 0.92 ERA in his junior season with 140 strikeouts and 27 walks . . . also recorded a .600 average at the plate as a first baseman and outfielder.

PERSONAL

Full name is Clayton E. Dirks . . . parents are James Dirks (deceased) and Juli Ann Dirks Kleine . . . has one older brother, Jay, and one older sister, Heather . . . interests include weightlifting, basketball and football . . . credits his father, his mother and his coaches with having greatest influence upon his athletic career . . . plans to major in secondary education and psychology at LSU . . . born July 28, 1984.



29

Jordan Faircloth

Pitcher
6-3, 210, R-R, So., Sq.
Alexandria, La. (Alexandria HS)

Talented pitcher with a promising future at LSU . . . redshirted as a true freshman in 2001 . . . did not make an appearance on the mound in 2002.

HIGH SCHOOL

Earned four letters in baseball (pitcher/first base/third base) and one letter in basketball (forward) at Alexandria Senior High . . . helped lead his team to four district championships and the 2000 state semi-finals . . . played baseball for coach Don Boniol, the father of LSU equipment manager Mike Boniol . . . a 2000 all-state selection and a three-time all-district choice . . . named the 2000 district most valuable player . . . as a senior, posted a 9-3 mark and a 0.95 ERA with 36 walks and 114 strikeouts . . . also batted .300 with five home runs.

PERSONAL

Full name is Jordan Lance Faircloth . . . parents are James and Carrie Faircloth . . . admires the pitching style of Atlanta Braves all-star Greg Maddux . . . born March 2, 1982.

Player Profiles



50

Shawn French

Catcher
6-0,195,R-R,Sr.,Sq.
San Mateo,Calif.(College of San Mateo)

Excellent prospect who provides depth in the LSU catching corps . . . joined the Tigers prior to the 2001 season, but injuries have prevented him from seeing any game action.

JUNIOR COLLEGE

An all-conference selection at the College of San Mateo (Calif.), as he hit .425 in 2000 with two homers and 21 RBI.

HIGH SCHOOL

A four-year baseball letterman . . . attended both Ygnacio Valley High and Clayton Valley High in Concord, Calif. . . an all-league and all-city selection.

PERSONAL

Full name is Shawn Michael French . . . parents are Robert and Cynthia French . . . has one younger sister, Angela . . . chose to attend LSU because it is a "classy institution with great community support" . . . credits his parents with having the greatest influence upon his athletic career . . . majoring in psychology . . . born October 28, 1978.



36

Justin Gee

Pitcher
6-3,200,R-R,Fr.,HS
Sarasota,Fla.(Sarasota HS)

Superb prospect who will contend for time on the mound this season . . . the 25th-round selection of the San Francisco Giants in the 2002 major league draft . . . made two appearances in LSU's fall 2002 intra-squad games, allowing no earned runs on two hits in four innings.

HIGH SCHOOL

Product of Sarasota (Fla.) High School, where he earned all-state and all-county honors.

PERSONAL

Full name is Justin William Gee . . . parents are Gary and Lynn Gee . . . has one older brother, Mike, and one older sister, Jenepher . . . interests include golf and automobiles . . . plans to major in finance at LSU . . . born October 3, 1983.



3

Blake Gill

Infielder/Outfielder
5-10,200,L-R,So.,1L
Bradenton,Fla.(Manatee HS)

Excellent all-around player who made a strong impact in 2002 as a redshirt freshman, starting 39 games at first base, second base and designated hitter . . . projected as the Tigers' 2003 starter at first base, third base or left field . . . played extremely well in the 2002 summer leagues, leading the Alaska Goldpanners to the National Baseball Congress tournament title in Wichita, Kansas . . . named the NBC tournament MVP, as he batted .407 (11-for-27) with 10 RBI . . . hit .345 (20-for-58) in LSU's fall 2002 intra-squad games with four doubles, one homer and eight RBI . . . redshirted as a true freshman in 2001.



2002 SEASON

Appeared in 52 games (39 starts), batting .292 (49-for-168) with 11 doubles, two triples, one homer, 26 RBI and 29 runs . . . hit .328 (22-for-67) in the second half of the season after batting .267 (27-for-101) in the first half . . . started 25 games at first base, 11 games at second base and three games at DH . . . batted .306 (19-for-62) with runners in scoring position . . . 1-for-3 in the NCAA Super Regional versus Rice . . . 3-for-10 in the NCAA Baton Rouge Regional with one double, two walks and two RBI . . . for the entire NCAA Tournament, he hit .308 (4-for-13) with one double, two RBI and three runs . . . 3-for-15 in the SEC Tournament with one double, one RBI and one run . . . posted an outstanding .333 average (22-for-66) in SEC regular-season games with five doubles, one triple, one homer, 18 RBI and nine runs . . . first career LSU homer was a pinch-hit grand slam April 14 versus Georgia; also added a two-run single in that contest to total a career-best six RBI . . . 7-for-12 in the Arkansas series (April 26-28), with at least two hits in all three games . . . 7-for-14 in series at Houston (Feb. 22-24), with three hits in each of the final two games . . . 4-for-4 with three runs scored versus Mercer (Feb. 17).

HIGH SCHOOL

A baseball and football letterman at Manatee High . . . an all-state and all-area selection . . . batted .496 in 1999 with 12 homers and 65 RBI . . . helped lead his team to the 1997 District 6A championship.

PERSONAL

Full name is Michael Blake Gill . . . parents are Michael and Peggy Gill . . . has one brother, Adam . . . credits his high school coach, Dwayne Strong, with having a great influence upon his athletic career . . . plans to major in sports medicine . . . born October 26, 1981.

GILL'S LSU CAREER STATISTICS

Year	G-GS	AB	R	H	Avg.	2B	3B	HR	RBI	BB	SO	SB-SBA
2002	52-39	168	29	49	.292	11	2	1	26	15	22	2-2

GILL'S LSU CAREER HIGHS

At-Bats: 5 (four occasions)
 Hits: 4 vs. Mercer (2/17/02)
 Runs Scored: 3 (twice)
 Doubles: 1 (several occasions)
 Triples: 1 (twice)
 Home Runs: 1 vs. Georgia (4/14/02)
 RBI: 6 vs. Georgia (4/14/02)
 Stolen Bases: 1 (twice)



21

Clay Harris

Pitcher/Infielder
6-4, 225 R-R, So., 1L
Slidell, La. (Slidell HS)

2002 Collegiate Baseball Freshman All-American

Strong-armed hurler who made significant contributions on the mound in 2002, primarily as a middle reliever . . . earned honorable mention Freshman All-America recognition from *Collegiate Baseball* magazine . . . also contributed as a position player with 22 appearances in the field at third base and first base . . . posted a 1.70 ERA in 21.2 innings during LSU's fall 2002 intra-squad games with seven walks and 12 strikeouts . . . older brother of LSU freshman pitcher/first baseman Will Harris.

2002 SEASON

Appeared in 16 games (five starts) on the mound, posting a 3-0 mark and a 4.15 ERA with five walks and 37 strikeouts in 47.2 innings . . . allowed 57 hits, 31 runs, 22 earned runs and limited opponents to a .302 batting average . . . also appeared in 22 games (14 starts) in the field, batting .221 (15-for-68) with three doubles, three homers, 10 runs and 12 RBI . . . started 10 games at first base, one at third base and three at DH . . . gave up just one walk in his final 24.1 innings on the mound . . . none of the nine runners he inherited in his 11 relief appearances crossed home plate . . . worked one shutout inning in Game 2 of NCAA Super Regional at Rice (June 8) . . . pitched 1.2 scoreless innings in NCAA Baton Rouge Regional game versus Louisiana-Lafayette (June 2), allowing one hit with one strikeout . . . worked three relief innings in the SEC Tournament versus South Carolina (May 25), allowing two runs (one earned) on no hits with one walk and two strikeouts . . . for the entire post-season, he recorded a 1.59 ERA in 5.2 innings, allowing just one earned run on one hit with one walk and three Ks . . . 1-for-3 at the plate in the NCAA Baton Rouge Regional with one run and one RBI . . . outstanding seven-inning outing to defeat Louisiana-Monroe (April 23), allowing three runs on eight hits with no walks and three Ks . . . defeated Southern (April 16), working five shutout innings and yielding just two singles . . . earned first career victory with a 5.1-inning relief outing versus Mercer (Feb. 17) . . . recorded a career-high eight strikeouts in starting role versus Tulane (March 5) . . . launched a pair of two-run homers in win over Louisiana-Monroe (March 10) . . . hit a pinch-hit grand



slam in his second career plate appearance versus Mercer (Feb. 17).

HIGH SCHOOL

A four-year baseball letterman (pitcher/third base) at Slidell High, where he helped lead his team to two district titles . . . posted an 8-1 mark and a 1.25 ERA in 2001 while batting .350 with six homers and 30 RBI . . . recorded a 9-3 career pitching mark; .395 career batting average with 32 homers and 105 RBI . . . a three-time all-state selection and a four-time all-district and all-St. Tammany Parish choice . . . 2001 all-district, all-parish and all-metro New Orleans Most Valuable Player . . . an honor roll student.

PERSONAL

Full name is Clayton Tyler Harris . . . grandparents are Harry and Jeanette Kennedy . . . has two younger brothers, Will and Dylan . . . interests include fishing and golf . . . chose to attend LSU because "I've been an LSU fan since I can remember, and it has always been my dream to play for the Tigers" . . . born August 25, 1982.

C.HARRIS' LSU CAREER STATISTICS (PITCHING)

Year	G-GS	W-L	ERA	SV	CG	SHO	IP	H	R	ER	BB	SO
2002	16-5	3-0	4.15	0	0	0	47.2	57	31	22	5	37

C.HARRIS' LSU CAREER HIGHS (PITCHING)

Innings: 7.0 at UL-Monroe (4/23/02)
 Strikeouts: 8 vs. Tulane (3/5/02)
 Hits Allowed: 9 at Southeastern Louisiana (3/26/02)
 Runs: 6 at Houston (2/24/02)
 Earned Runs: 5 at Auburn (4/6/02)
 Walks: 2 at Auburn (4/6/02)

C.HARRIS' LSU CAREER STATISTICS (HITTING)

Year	G-GS	AB	R	H	Avg.	2B	3B	HR	RBI	BB	SO	SB-SBA
2002	22-14	68	10	15	.221	3	0	3	12	2	17	0-0

C.HARRIS' LSU CAREER HIGHS (HITTING)

At-Bats: 5 (five occasions)
 Hits: 3 vs. UL-Monroe (3/9/02)
 Runs Scored: 2 vs. UL-Monroe (3/10/02)
 Doubles: 1 (three occasions)
 Triples: None
 Home Runs: 2 vs. UL-Monroe (3/10/02)
 RBI: 4 (twice)
 Stolen Bases: None

Player Profiles

INTRO
 THIS IS LSU
 PREVIEW
TIGERS
 COACHES
 REVIEW
 HISTORY
 RECORDS
 LSU



25

Will Harris

Pitcher/First Baseman
6-4,230,R-R,Fr.,HS
Slidell,La.(Slidell HS)

Versatile player who could make an impact this season at first base and designated hitter . . . younger brother of LSU pitcher Clay Harris . . . hit .294 (15-for-51) in LSU's fall 2002 intra-squad games with one double,one triple,two homers and five RBI.

HIGH SCHOOL

Product of Slidell (La.) High School,where he pitched and played first base . . . earned all-state,all-parish and all-district recognition . . . posted an 8-1 mark as a junior with a 0.98 ERA . . . an honor roll student throughout his entire high school career.

PERSONAL

Full name is William Taylor Harris . . . grandparents are Harry and Jeanette Kennedy . . . has one older brother, Clay, and one younger brother, Dylan . . . credits Clay with having the greatest influence upon his athletic career, saying "My brother has paved the way for me my whole life.He has taught me a whole lot by example." . . . born August 28,1984.



5

Aaron Hill

Infielder
6-0,200,R-R,Jr.,2L
Visalia,Calif.(Redwood HS)

2002 United States National Team Member
2001 Collegiate Baseball Freshman All-American

Extremely gifted player who projects as the Tigers' starter at shortstop or third base . . . named a 2003 third-team pre-season all-American by *Collegiate Baseball* magazine. . . played as the Tigers' starting shortstop in 2002 and was a part-time starter in the outfield in 2001 . . . helped lead the U.S. National Team to the silver medal at the 2002 World University Baseball Championship in Messina,Italy . . . batted .400 (10-for-25) in seven games at the tournament with four doubles,three homers, eight runs and 10 RBI . . . finished the entire 30-game summer schedule in second place on the Team USA squad in RBI (24), runs (23),doubles (10) and homers (3); the U.S. team posted a 23-7 overall mark . . . the seventh-round selection of the Anaheim Angels in the 2000 major-league draft.

2002 SEASON

Appeared in 56 games (54 starts) at shortstop, batting .329 (73-for-222) with 18 doubles,two triples,nine homers,46 runs and 47 RBI . . . batted .369 (24-for-65) with runners in scoring position . . . hitless in eight at-bats in the NCAA Super Regional at Rice . . . batted .278 (5-for-18) in the NCAA Baton Rouge Regional with two homers,three runs and three RBI . . . 3-for-16 in the SEC Tournament with two doubles,one run and three RBI . . . hit a spectacular .373 (44-for-118) in SEC regular-season games with 10 doubles,two triples,five homers,27 runs and 21 RBI . . . named Louisiana Sportswriters Association Player of the Week April 10-14,as he batted .450 (9-for-20) in four games versus Tulane and Georgia with two homers and six RBI . . . also



named LSWA Player of the Week March 26-30 after hitting .692 (9-for-13) with eight RBI in three games against Southeastern Louisiana and Mississippi State . . . 4-for-5 with a homer and four RBI in win over Mississippi State (March 30) . . . 3-for-4 with a two-run homer and a two-run single versus Tulane (April 10) in the Louisiana Superdome.

2001 SEASON

Appeared in 46 games (34 starts) as a left fielder/DH,batting .299 (40-for-134) with five doubles,one triple,five homers and 36 RBI . . . hit .348 (16-for-46) with runners in scoring position . . . batted .262 (16-for-61) in SEC regular-season games with one double,four homers and 19 RBI . . . played in a reserve role during the post-season,going 0-for-3 at the plate in four games . . . launched first-inning grand slam which sparked LSU to win at South Carolina (April 7) . . . 4-for-5 with a double and four RBI at Arizona State (March 2) . . . 3-for-6 with a homer, two RBI and three runs vs.Florida (March 16) . . . outstanding collegiate debut in three-game series vs.Kansas State (Feb. 10-11),as he was 6-for-13 at the plate with one double,two RBI and four runs.

HIGH SCHOOL

Enjoyed a brilliant four-year career at Redwood High in Visalia, batting .521 (164-for-315) with 36 doubles,13 triples,15 homers, 99 RBI,125 runs and 77 stolen bases . . . as a senior, he hit .565 with 16 doubles,seven triples,nine homers,24 RBI and 21 steals . . . named the West Yosemite MVP in 2000 and Co-MVP in 1999 . . . an all-Region 8 selection and the Fresno Bee Area Player of the Year . . . also lettered three years in football (wide receiver, punt returner) and three years in soccer (forward).

PERSONAL

Full name is Aaron Walter Hill . . . father is Walter Hill . . . interests include playing the guitar . . . chose to attend LSU because of its "academic and athletic reputation,and for the experience of a lifetime" . . . credits his father with having the greatest influence upon his athletic career . . . born March 21, 1982.

HILL'S LSU CAREER STATISTICS

Year	G-GS	AB	R	H	Avg.	2B	3B	HR	RBI	BB	SO	SB-SBA
2001	46-34	134	27	40	.299	5	1	5	36	15	17	6-7
2002	56-54	222	46	73	.329	18	2	9	47	20	20	10-11
Total	102-88	356	73	113	.317	23	3	14	83	35	37	16-18

HILL'S LSU CAREER HIGHS

At-Bats:	6 (three occasions)
Hits:	4 (twice)
Runs Scored:	3 (three occasions)
Doubles:	2 (twice)
Triples:	1 (three occasions)
Home Runs:	1 (several occasions)
RBI:	4 (six occasions)
Stolen Bases:	2 (twice)



1

J.C. Holt

Infielder/Outfielder
5-9,170,L-R,So.,1L
Sieper, La.(Oak Hill HS)

2002 Collegiate Baseball Freshman All-American
2002 Baseball America Freshman All-American
2002 NCAA Baton Rouge Regional All-Tournament Team
2002 LSWA Freshman of the Year

Superb Louisiana prospect who may play in the outfield in 2003 after starting 43 games in 2002 (35 at second base, seven at shortstop, one at DH) . . . was the Tigers' lead-off hitter in 36 of his starts . . . made a huge impact as a true freshman in 2002, as he was named a Freshman All-American by two publications and the LSWA Louisiana Freshman of the Year . . . performed very well in LSU's fall 2002 intra-squad games, batting a team-best .404 (23-for-57) with four doubles, one triple, one homer, four RBI and 10 runs.

2002 SEASON

Appeared in 55 games (43 starts), finishing the season as the team's second-leading hitter with a .349 (67-for-192) average, five doubles, six triples, three homers, 45 runs and 23 RBI . . . batted .347 (17-for-49) with runners in scoring position . . . hitless in five at-bats with three walks in the NCAA Super Regional at Rice . . . named to the NCAA Baton Rouge Regional all-tournament team after hitting a team-high .500 (11-for-22) with two triples, six runs and one RBI . . . LSU's leading hitter for the entire NCAA Tournament, as he batted .407 (11-for-27) in seven games with two triples, six runs and one RBI . . . 3-for-16 in the SEC Tournament with one double, three runs and one RBI . . . LSU's second-leading hitter in SEC regular-season games, batting .381 (32-for-84) with three doubles, four triples, two homers, 22 runs and 12 RBI . . . hit .289 (28-for-97) in the first half of the season and a team-best .411 (39-for-95) in the second half . . . enjoyed a 16-game hitting streak to end the regular-season, batting .459 (23-for-61) during the streak . . . 4-for-6 with three runs in NCAA Regional championship game win over Louisiana-Lafayette (June 2) . . . 4-for-5 and scored game-winning run in Regional opener versus Southern (May 31) . . . 4-for-6 with three runs scored versus Arkansas (April 28) . . . three-run homer at UL-Monroe (April 23); pinch-hit homer at South Carolina (April 21); first career homer at Auburn (April 7).

HIGH SCHOOL

Earned six letters in baseball (shortstop/second base), three letters in basketball (point guard) and three letters in track and field (100 and 200m/long jump and triple jump) at Oak Hill High, located in Hinston, La. . . a *Collegiate Baseball/TPX* all-America selection in 2000 and 2001 . . . a five-time baseball all-state selection who hit .540 (34-for-63) as a senior with nine homers, 29 RBI, 35 steals and 41 runs . . . for his career, he hit .504 (210-for-417) with 163 RBI, 234 runs and 145 stolen bases . . . helped lead his team to the 2000 Class B state title . . . 2001 Class B state champion in the 100 and 200-meter dashes; also captured the 1999 state title in the triple jump . . . earned 2000 all-district and all-Central Louisiana recognition in basketball; also a 1999 all-state selection in hoops . . . an honor roll student who received numerous scholastic awards, including the U.S. Army Reserve Scholar/Athlete Award and the President's Education Award for Academic Excellence.



PERSONAL

Full name is John Curtis Holt . . . parents are John and Janet Holt . . . has one older brother, Nathan . . . credits his parents with having the greatest influence on his athletic career . . . hobbies include hunting and fishing . . . born December 8, 1982.

HOLT'S LSU CAREER STATISTICS

Year	G-GS	AB	R	H	Avg.	2B	3B	HR	RBI	BB	SO	SB-SBA
2002	55-43	192	45	67	.349	5	6	3	23	20	40	10-11

HOLT'S LSU CAREER HIGHS

At-Bats:	6 (four occasions)
Hits:	4 (twice)
Runs Scored:	3 (twice)
Doubles:	1 (five occasions)
Triples:	1 (six occasions)
Home Runs:	1 (three occasions)
RBI:	3 (twice)
Stolen Bases:	2 (twice)



2

Matt Horwath

Infielder
5-10,170,R-R,Fr.,HS
Lake Mary, Fla.(Lake Mary HS)

Skilled infielder who should make an immediate impact this season, perhaps as the starter at shortstop . . . produced three doubles, one homer, five RBI and seven runs in LSU's fall 2002 intra-squad games.

HIGH SCHOOL

Product of Lake Mary (Fla.) High School, where he earned all-state, all-conference and all-district recognition and helped lead his team to conference and regional titles . . . did not play his senior season after undergoing "Tommy John" arm surgery . . . entering his senior season, he had a .411 (113-for-275) career batting average with 32 doubles, four triples, six homers, 82 runs and 61 RBI . . . struck out only 19 times in 275 at-bats . . . member of the National Honor Society and the Latin Honor Society . . . recipient of the Citizenship Award.

PERSONAL

Full name is Matthew James Horwath . . . parents are Bill and Sue Horwath . . . has two younger sisters, Lauren and Hannah . . . credits his dad with having the greatest influence upon his athletic career . . . born September 24, 1983.

Player Profiles

INTRO
THIS IS LSU
PREVIEW
TIGERS
COACHES
REVIEW
HISTORY
RECORDS
LSU



10

Ty Jensen

Catcher
6-0,180,R-R,Jr.,JC
San Mateo,Calif.(College of San Mateo)

JUCO transfer who lends depth to LSU's corps of catchers.

JUNIOR COLLEGE

Played two seasons at the College of San Mateo (Calif.),where he batted .320 in 2002 with one homer, 12 doubles,one triple and 28 RBI . . . earned all-conference honors and participated in the California All-Star Sunbelt Classic . . . helped lead his team to the 2002 Coast Conference championship.

HIGH SCHOOL

Product of Junipero Serra High School in San Mateo,where he earned three letters in baseball (catcher) and two letters in football (quarterback) . . . received all-county and all-league recognition.

PERSONAL

Full name is Tyler Porter Jensen . . . parents are Peter and Robin Jensen . . . has younger twin sisters,Keely and Courtney . . . interests include wakeboarding, water skiing and working on cars . . . credits his father with having the greatest influence upon his athletic career . . . plans to major in construction management at LSU . . . born July 16,1981.



14

Matt Liuzza

Catcher
6-0,190,R-R,Fr.,HS
Kenner, La.(Rummel HS)

Highly-touted prospect who is a strong contender for the starting job at catcher.

HIGH SCHOOL

Product of Rummel High School in Metairie,La.,a suburb of New Orleans . . . earned four letters in baseball (catcher) and two letters in football (quarterback) . . . helped lead Rummel to district baseball titles in 1999,2000 and 2001 . . . earned Class 5A all-state recognition and was voted district MVP . . . named the Nokia Sugar Bowl Amateur Athlete of the Month in June,2000 . . . as a junior, batted .419 with 12 homers and 52 RBI . . . member of the Beta Honor Roll.

PERSONAL

Full name is Matthew Paul Liuzza . . . parents are Dave and Debra Liuzza . . . has one older brother, David,and one older sister, Amy . . . hobbies include golf . . . plans to major in physical therapy at LSU . . . born February 3,1984.



60

Chris McDougall

Pitcher
6-4,225,L-L,Fr.,RS
Arabi,La. (Jesuit HS)

Louisiana pitching prospect who lends depth to the Tigers' staff . . . redshirted as a true freshman in 2002 . . .worked 9.2 innings in LSU's fall 2002 intra-squad games,posting a 3.91 ERA.

HIGH SCHOOL

Three-year letterman as a pitcher at Jesuit High School in New Orleans . . .posted an 8-1 mark in his senior season with a 0.62 ERA and 42 strikeouts . . . earned baseball all-Metro recognition . . . also was a member of the basketball and swimming teams . . . helped lead the swim team to the 1999 state championship.

PERSONAL

Full name is Christopher McDougall . . . parents are Wayne and Elizabeth McDougall . . . has one older sister, Ashley . . . hobbies include fishing and hunting . . . credits his father with having the greatest influence upon his athletic career . . . majoring in business at LSU . . . born January 13,1983.



35

Justin Meier

Pitcher
6-0,205,R-R,Fr.,HS
Windermere,Fla.(West Orange HS)

Excellent hurler who made a strong showing during LSU's fall workouts . . . pitched a team-high 24.1 innings in the fall intra-squad games, recording a 2.24 ERA with one walk and 14 strikeouts.

HIGH SCHOOL

Product of West Orange High School in Winter Garden,Fla., where he earned all-state, all-metro and all-county recognition . . . recorded a 7-3 mark and a 1.03 ERA in 2002 with 105 strikeouts and seven walks in 86 innings . . . helped lead team to the 2001 Metro (Orlando,Fla.) championship . . . as a junior, posted a 10-1 mark with a 0.98 ERA in 75 innings with 95 strikeouts and seven walks . . . an honor roll student throughout his high school career, he posted the highest GPA on his baseball team.

PERSONAL

Full name is Justin Ryan Meier . . . parents are Ron and Sharon Meier . . . has one older brother, Jason . . . hobbies include fishing . . . credits his father and his high school coaches with having the greatest influence upon his athletic career . . . plans to major in sports management at LSU . . . born November 17, 1983.



46

Lane Mestepey

Pitcher
6-0,190,L-L,Jr.,2L
Zachary, La.(Central Private HS)

- 2002 First-Team All-Southeastern Conference
- 2002 Collegiate Baseball Third-Team All-American
- 2002 ABCA First-Team All-South Region
- 2001 Collegiate Baseball National Co-Freshman of the Year
- 2001 Collegiate Baseball Third-Team All-American
- 2001 Baseball America First-Team Freshman All-American
- 2001 Baseball Weekly First-Team Freshman All-American
- 2001 Southeastern Conference Freshman of the Year
- 2001 First-Team All-Southeastern Conference
- 2001 NCAA Baton Rouge Regional All-Tournament Team
- SEC Pitcher of the Week (April 16, 2001)

LSU's No.1 pitcher the past two seasons; a two-time first-team all-SEC selection with a 22-8 career record in 37 starts . . . underwent off-season shoulder surgery last summer and began a rehabilitation program in the fall . . . may be granted a medical red-shirt for the 2003 season, depending upon the progress of his rehabilitation . . . led the SEC in 2002 in ERA (2.59) and innings pitched (142.1), and was second in the league in wins (11) . . . finished as the 2001 SEC leader in wins (11), starts (19) and innings pitched (139.1) . . . became the only pitcher in LSU history to win at least 10 games in both his freshman and sophomore seasons, and he is one of only two LSU players (along with former 2B Todd Walker) to win first-team all-SEC honors as a freshman and a sophomore.

2002 SEASON

Appeared in 19 games (18 starts), posting an 11-5 mark and an SEC-best 2.59 ERA in a league-high 142.1 innings . . . fired eight complete games and allowed 145 hits, 57 runs, 41 earned runs, 17 walks and 74 strikeouts . . . in the second half of the season, Mestepey was 5-3 in nine starts with a 1.78 ERA . . . won six consecutive starts from March 23-April 26 . . . issued just one walk in his final 34 innings of work . . . suffered a loss at Rice in the NCAA Super Regional (June 7), allowing six runs (one earned) on nine hits in seven innings with no walks and three strikeouts . . . fired a complete game in the NCAA Baton Rouge Regional versus Louisiana-Lafayette (June 1), but was charged with the loss after allowing five runs (three earned) on nine hits with no walks and six strikeouts . . . brilliant outing in the SEC Tournament versus Auburn (May 22), as he scattered six hits over nine innings to earn the win; allowed one run with one walk and three strikeouts . . . recorded a 7-2 mark with a 2.63 ERA in SEC regular-season games, allowing 81 hits and 30 runs (23 earned) in 78.2 innings with 12 walks and 36 strikeouts . . . fired a five-hit shutout versus Alabama (May 18), scattering five singles and allowing just two Crimson Tide runners to reach third base; recorded no walks and five strikeouts . . . pitched a four-hit shutout versus Arkansas (April 26), recording six strikeouts with no walks . . . also posted complete-game victories over Georgia (April 12), Ole Miss (March 23) and Houston (Feb. 23) . . . named LSWA Player of the Week after defeating Long Beach State (March 2), allowing one run on five hits in eight innings with no walks and eight strikeouts.

2001 SEASON

True freshman sensation who developed into LSU's top starting pitcher . . . 11-3 W-L record with a 3.75 ERA in 22 appearances (19 starts) . . . in 139.1 innings, he allowed 158 hits and 77 runs (58 earned) with 37 walks and 79 strikeouts . . . 7-3 in SEC regular-season games with a 3.30 ERA in 79 innings . . . finished No.



1 in the SEC in wins, starts and innings pitched, No. 6 in strikeouts, No. 8 in ERA, pitched brilliantly in LSU's NCAA Super Regional (Game 1) win over Tulane (June 1), allowing just three runs on 11 hits in 10 innings with one walk and six strikeouts . . . named to the NCAA Baton Rouge Regional all-tournament team after pitching the Tigers to victory over Virginia Commonwealth (May 27) in the regional title game . . . worked 6.1 innings against VCU -- on just one day's rest after pitching 5.2 innings vs. Minnesota -- limiting the Rams to four earned runs on seven hits with one walk and one strikeout . . . enjoyed two outstanding outings in the SEC Tournament, defeating Ole Miss (May 17) as a starter (6 IP, 3 H, 0 ER, 1 BB, 4 SO) and working in relief against Mississippi State (May 20 - 4 IP, 3 H, 0 ER, 0 BB, 7 SO) . . . named SEC Pitcher of the Week on April 16 after a complete-game victory over Ole Miss the day before, limiting the Rebels to two earned runs on three hits with no walks and two strikeouts . . . defeated Alabama (April 27) with a complete-game four-hitter, limiting the Crimson Tide to one earned run with two walks and six strikeouts . . . posted a complete-game win over Kentucky (March 30), as he limited the Wildcats to one earned run on nine hits with one walk and five strikeouts . . . defeated Mississippi State (March 24), allowing one earned run on six hits in 8.1 innings with no walks and six strikeouts . . . defeated South Carolina (April 6), allowing three runs on seven hits in 8.0 innings with four walks and four strikeouts . . . also posted a win over Florida (March 17), limiting the Gators to three runs on 10 hits in 7.1 innings with three walks and three Ks.

HIGH SCHOOL

Pitched at Central Private High in Baker, La., where he earned district MVP honors in 2000 . . . posted an 11-0 mark with a 0.46 ERA, 17 walks and 127 strikeouts . . . also batted .452 with 18 homers and 74 RBI . . . in 1999, he was 8-2 with a 2.32 ERA in 57.1 innings; recorded 20 walks and 54 strikeouts.

PERSONAL

Full name is Rogers Lane Mestepey Jr. . . . parents are Rogers Sr. and Sue Mestepey . . . interests include hunting and fishing . . . admires former Boston Celtics all-star Larry Bird for his dedication to excellence . . . born January 14, 1982.

Mestepey's LSU Career Statistics

Year	G-GS	W-L	ERA	SV	CG	SHO	IP	H	R	ER	BB	SO
2001	22-19	11-3	3.75	14	0	0	139.1	158	77	58	37	79
2002	19-18	11-5	2.59	0	8	2	142.1	145	57	41	17	74
Total	41-37	22-8	3.16	1	12	2	281.2	303	134	99	54	153

MESTEPEY'S LSU CAREER HIGHS

Innings:	10.0 at Tulane (6/1/01)
Strikeouts:	8 vs. Long Beach State (3/2/02)
Hits Allowed:	13 vs. Minnesota (5/25/01)
Runs:	8 (twice)
Earned Runs:	8 vs. Minnesota (5/25/01)
Walks:	5 at Ole Miss (3/23/02)

Player Profiles

INTRO

THIS IS LSU

PREVIEW

TIGERS

COACHES

REVIEW

HISTORY

RECORDS

LSU



11

Michael Murray

Infielder
5-10,170,R-R,Fr.,HS
Baton Rouge,La. (Catholic HS)

Excellent all-around player who lends depth to the Tigers' infield this season as a true freshman.

HIGH SCHOOL

Named MVP of Louisiana Class 5A after hitting .560 in 2002 with nine homers and 40 RBI as a shortstop . . . also recorded a 13-4 mark as a pitcher . . . hit .491 in 2001 with four homers and 32 RBI.

PERSONAL

Full name is Michael John Murray . . . parents are John and Barbara Murray . . . hobbies include fishing and hunting . . . plans to major in pre-medicine at LSU . . . chose to attend LSU because the university offers a "great college experience,not only for sports,but for studies as well" . . . born January 16,1984.



7

Ivan Naccarata

Infielder
5-11,185,L-R,Jr.,JC
Longueuil,Quebec (Chipola JC)

Talented junior college prospect who is LSU's likely starter at second base . . . the 21st-round selection of the Houston Astros in the 2002 major league draft . . . also selected in the 40th round of the 2000 draft by the Montreal Expos . . . enrolled at LSU in January, 2003.

JUNIOR COLLEGE

Played two season at Chipola Junior College in Marianna,Fla., where he recorded a .400 career batting average . . . batted .370 in 2002 with 16 homers,56 RBI and 78 hits.

HIGH SCHOOL

Played as the starting second baseman for the 2000 Canadian National Team . . . attended Georges-Vanier High School in Montreal . . . also competed in ice hockey as a center.

PERSONAL

Full name is Ivan Naccarata . . . parents are Gaetano Naccarata and Annie Kovacic . . . has one brother, Nicholas . . . interests include music and fishing . . . credits his parents with having the greatest influence upon his athletic career . . . born February 26, 1982.



8

Brandon Nall

Pitcher
6-3,185,R-R,Jr.,JC
Dothan,Ala.(Wallace State CC)

Superb pitching prospect who is a strong candidate to become the Tigers' closer out of the bullpen . . . the 31st-round selection of the Atlanta Braves in the 2002 major league draft . . . pitched superbly in LSU's fall 2002 intra-squad games, recording a 0.89 ERA in 20.2 innings with 21 strikeouts,seven walks and a .106 opponents' batting average.

JUNIOR COLLEGE

An all-conference selection at Wallace State,located in Dothan, Ala. . . . posted an 8-6 mark in 2002 with a 2.70 ERA and 92 strikeouts in 90 innings . . . in 2001, recorded a 9-6 mark and a 1.15 ERA in 90 innings.

HIGH SCHOOL

Product of Northview High School in Dothan,Ala. . . . helped lead his team to the American Legion state title in 2000.

PERSONAL

Full name is Brandon Michael Nall . . . parents are Mark and Linda Nall . . . has one older brother, Steadman . . . interests include golf and snowboarding . . . credits his parents with having the greatest influence upon his athletic career . . . plans to major in turfgrass management at LSU . . . born March 18,1982.



28

Ryan Patterson

Outfielder
5-11,195,R-R,So.,JC
Rowlett, Texas (Texarkana College)

Highly-regarded junior college prospect who will contend for playing time in the outfield this season after playing one year at Texarkana College . . . the 34th-round selection of the Atlanta Braves in the 2002 major league draft.

JUNIOR COLLEGE

Named the 2002 conference freshman of the year at Texarkana (Texas) College,as he batted .439 with 19 homers,25 doubles,75 RBI and 24 steals . . . named a second-team JUCO all-American . . . helped lead Texarkana to the 2002 conference crown.

HIGH SCHOOL

Enjoyed a stellar career at Rowlett (Texas) High School,where he led his team to area championships in 2000 and 2001 . . . batted .553 as a senior with four homers and 35 RBI . . . hit .450 as junior with 11 homers and 49 RBI . . . earned four letters in baseball (left field) and three letters in football (running back).

PERSONAL

Full name is Ryan Marcus Patterson . . . parents are Mark and Gail Patterson . . . has one older sister, Kristin . . . credits his parents with having the greatest influence upon his athletic career . . . say he chose LSU because "I have always wanted to be a Tiger, and it is the top baseball school in the nation" . . . plans to major in communications at LSU . . . born May 2,1983.



34

Bo Pettit

Pitcher
6-1,215,R-R,Sr.,3L
Houston, Texas (Sharpstown HS)

SEC Pitcher of the Week (April 15, 2002)
2000 Collegiate Baseball Freshman All-American

Talented veteran pitcher who was selected in the 13th round of the 2002 draft by the Minnesota Twins, but elected to return to LSU for his senior season . . . enjoyed a solid 2002 campaign, as he avoided the injuries which plagued the first three years of his collegiate career . . . delivered several solid performances as a redshirt freshman in 2000 before shoulder problems kept him out of the rotation from early May through the end of the season . . . underwent shoulder surgery and was able to pitch on a limited basis in 2001 as he continued to rehabilitate his shoulder . . . finally came back at full strength in 2002 and established himself as a full-time starter in LSU's weekend rotation . . . redshirted as a true freshman in 1999.

2002 SEASON

Appeared in 19 games (all starts), posting a 9-7 mark and a 3.35 ERA in 121 innings . . . fired four complete games and allowed 112 hits and 61 runs (45 earned) with 57 walks and 121 strikeouts . . . completed the season No.1 in the SEC in games started (19), No.2 in strikeouts (121), No.3 in innings pitched (121), No.5 in opposing batting average (.240) and No.8 in ERA (3.35) . . . pitched complete games in his final three starts - a win over Alabama (May 19), a loss to South Carolina (May 25) in the SEC Tournament and a win over Tulane (June 1) in the NCAA Baton Rouge Regional . . . over his final 11 starts, Pettit was 7-3 with a 2.64 ERA, recording 65 Ks in 71.2 innings . . . defeated Tulane (June 1) in an elimination game at the NCAA Baton Rouge Regional, allowing two runs on seven hits with two walks and 11 strikeouts in a complete-game victory; the win kept LSU alive in the regional, which the Tigers won the next day with two triumphs over Louisiana-Lafayette . . . suffered a loss to South Carolina in the semi-finals of the SEC Tournament (May 25), allowing five runs (four earned) on eight hits in eight innings with two walks and eight strikeouts . . . recorded a 5-4 mark and a 3.48 ERA in SEC regular-season games, allowing 57 hits and 32 runs (24 earned) in 62 innings with 40 walks and 57 strikeouts . . . in complete-game win over Alabama (May 19), allowed just one run on five hits with nine Ks . . . superb outing in win at Florida (May 12), allowing just four singles to the SEC's top-hitting club and limiting the Gators to one run in eight innings . . . named SEC Pitcher of the Week (April 15) after posting wins over Tulane (April 10) and Georgia (April 14) . . . versus Tulane, in front of an NCAA-record crowd of 27,673 in the Louisiana Superdome, he fired five shutout innings, allowing just one hit while striking out five . . . versus Georgia, he worked eight innings, allowing three earned runs on seven hits with one walk and seven strikeouts . . . fired a complete-game, four-hit shutout versus Vanderbilt (March 15), tying a career high with 12 strikeouts . . . also recorded a career-high 12 Ks versus Mercer (Feb. 15).

2001 SEASON

Appeared in seven games (four starts), posting a 4-0 mark and a 2.42 ERA with seven walks and 25 strikeouts in 26 innings . . . best outing of the year came in a win at Mississippi State (March 23), as he worked 6.1 innings and limited the Bulldogs to no earned runs on six hits with four walks and three strikeouts . . . defeated Florida (March 18) with 3.2 relief innings, limiting the Gators to two runs on six hits with no walks and three strikeouts

. . . earned win over Southern (March 13) with a five-inning outing, allowing two runs on two hits with one walk and three Ks . . . also defeated New Orleans (May 1), allowing one unearned run in three innings with one hit, no walks and five strikeouts . . . made final appearance of the season in a starting role at Arkansas (May 6), allowing two runs on three hits in five innings with one walk and six Ks.



2000 SEASON

Appeared in 16 games (seven starts), recording a 5-3 mark with a 4.15 ERA in 47.2 innings . . . registered 22 walks and 52 strikeouts on the year . . . allowed just three earned runs in his final 16.2 innings of work; however, he did not pitch after May 6 due to tendonitis in his shoulder . . . turned in a brilliant effort in his first career SEC start April 30 at Ole Miss, defeating the Rebels with a seven-inning performance in which he limited them to one run on five hits with three walks and a career-high 12 Ks . . . defeated Kentucky (May 6) in his final outing of the season, limiting the Wildcats to two runs on nine hits in 6.2 innings with two walks and six Ks . . . earned the victory over Louisiana-Lafayette (April 11), working five innings and limiting the Cajuns to two runs on five hits with no walks and five Ks . . . defeated New Orleans (March 22), working four shutout innings with no hits, one walk and six Ks . . . defeated Virginia (Feb. 12), firing six shutout innings with two hits, two walks and six strikeouts.

HIGH SCHOOL

Lettered three seasons as a pitcher and third baseman at Sharpstown High in Houston . . . named first team all-district as a senior after earning second team honors as a junior . . . was a pre-season all-Houston selection . . . played with the Team One national touring team during his high school off-seasons . . . also lettered two years in golf . . . coached in baseball by Tony Mardirosian and in golf by Jim Rienstra.

PERSONAL

Full name is William Collier Pettit . . . parents are David and Juanita Pettit . . . has one brother, Kelley . . . majoring in general studies . . . born June 18, 1980.

PETTIT'S LSU CAREER STATISTICS

Year	G-GS	W-L	ERA	SV	CG	SHO	IP	H	R	ER	BB	SO
1999*	3-0	0-0	15.43	0	0	0	2.1	5	5	4	2	3
2000	16-7	5-3	4.15	0	0	0	47.2	44	25	22	22	52
2001	7-4	4-0	2.42	0	0	0	21	9	7	7	25	25
2002	19-19	9-7	3.35	0	4	1	121	112	61	45	57	121
Total	45-30	18-103.56	0	4	1	197	182	100	78	88	201	

* - redshirt season

PETTIT'S LSU CAREER HIGHS

Innings:	9.0 (three occasions)
Strikeouts:	12 (three occasions)
Hits Allowed:	10 at Houston (2/22/02)
Runs:	8 at Ole Miss (3/22/02)
Earned Runs:	5 vs. Mississippi State (3/29/02)
Walks:	8 at Ole Miss (3/22/02)

Player Profiles

INTRO

THIS IS LSU

PREVIEW

TIGERS

COACHES

REVIEW

HISTORY

RECORDS

LSU



4

Billy Sadler

Pitcher
6-0,190,R-R,Jr.,JC
Pensacola,Fla.(Pensacola JC)

Outstanding JUCO pitching prospect who should contend for playing time on the mound . . . pitched 23.2 innings in LSU's fall 2002 intra-squad games, recording a 4.27 ERA with 18 strikeouts and a .216 opponents' batting average . . . the 30th-round selection of the Seattle Mariners in the 2001 major league draft.

JUNIOR COLLEGE

Played two seasons at Pensacola (Fla.) Junior College . . . worked 58 innings in 2002,posting a 3.68 ERA with 29 walks and 84 strikeouts.

HIGH SCHOOL

Product of Pensacola Catholic High School,where he was named the Class 3A Player of the Year in 2000 as a pitcher and shortstop . . . recorded a 4-1 pitching mark with a 0.72 ERA in 2000, including three shutouts; also hit .452 with eight homers and 41 RBI . . . voted to the Pensacola Catholic High Hall of Fame . . . member of the all-academic team.

PERSONAL

Full name is William Henry Sadler IV . . . parents are Bill and Terry Sadler . . . has three older sisters,Shelly, Christy and Terah . . . interests include fishing,hunting and water sports . . . says it has always been his dream to play at LSU . . . credits his parents with having the greatest influence upon his athletic career . . . plans to major in business at LSU . . . born September 21,1981.



6

Collin Smith

Pitcher
6-0,195,R-R,Jr.,JC
Baker, La.(Pearl River CC)

Excellent prospect who lends depth to the Tigers' pitching staff . . . played one season at Bossier Parish (La.) Community College and one season at Pearl River (Miss.) Community College before transferring to LSU . . . will receive a medical redshirt in 2003 after undergoing off-season shoulder surgery.

JUNIOR COLLEGE

Pitched 18 innings as a freshman at Bossier Parish CC, allowing just four earned runs with 20 strikeouts and 12 walks . . . a 2002 first-team all-regional selection at Pearl River CC, where he was named team MVP and led the squad to the JUCO World Series . . . in 31 innings,posted a 5-0 record and a 0.00 ERA with five saves . . . averaged 1.5 strikeouts per inning.

HIGH SCHOOL

An all-district selection at Central High School in Baton Rouge . . . helped lead the Wildcats to a district title in 2000 . . . also played point guard for the Central basketball team.

PERSONAL

Full name is Collin Vincent Smith . . . parents are Steve and Pat Smith . . . has one older brother, Brad . . . interests include fishing

. . . credits his parents with having the greatest influence upon his athletic career . . . plans to major in management at LSU . . . born October 24,1980.



27

Greg Smith

Pitcher/First Baseman
6-2,180,L-L,Fr.,HS
Alexandria,La.(Alexandria HS)

Talented freshman who should contend for playing time this season on the mound and at first base . . . worked 17 innings in LSU's fall 2002 intra-squad games,limiting hitters to a .208 batting average.

HIGH SCHOOL

Named 2002 Mr. Baseball in the state of Louisiana after enjoying a superb senior year in which he posted a 9-0 record and a 0.12 ERA . . . worked 60 innings on the mound,allowing just one earned run on 18 hits with 13 walks and 91 strikeouts . . . tied the state record for single-game strikeouts with 20 Ks in one contest . . . also batted .479 (34-for-71) with 11 doubles,two triples,six homers and 48 RBI . . . as a junior, led the Alexandria High to the 2001 Class 4A state championship game . . . posted an 8-2 mark and a 0.78 ERA in '01 with 96 strikeouts in 58 innings . . . also batted .365 as the team's clean-up hitter . . . played quarterback for the Alexandria football team . . . an honor roll student throughout his high school career.

PERSONAL

Full name is Gregory Thomas Smith . . . parents are Greg and Eileen Smith . . . has one older sister, Kristin . . . credits his father with having the greatest influence upon his athletic career . . . plans to major in sports medicine at LSU . . . born December 22, 1983.



24

Bruce Sprowl

Outfielder
5-9,165,L-R,So.,JC
Knoxville, Tenn.(Shelton State CC)

Hard-nosed player who should make an immediate impact in the outfield.

JUNIOR COLLEGE

Played one season at Shelton State Community College in Tuscaloosa,Ala. . . batted .343 in 2002 with 15 doubles, three triples, four homers, 38 RBI and 51 runs . . . a Dean's List student.

HIGH SCHOOL

A pitcher and outfielder at Bearden High School in Knoxville, Tenn. . . . earned all-state and district MVP honors.

PERSONAL

Full name is Bruce Joseph Sprowl Jr. . . parents are Bruce Sprowl Sr. and Kimberly Wilson . . . has one younger brother, Brian . . . hobbies include snowboarding . . . credits his parents with having the greatest influence upon his athletic career . . . plans to major in education at LSU . . . born January 21,1983.



40

Quinn Stewart

Outfielder
6-2, 190, R-R, So., JC
Rowlett, Texas (Odessa JC)

Skilled outfielder who transferred to LSU after one season at Odessa (Texas) Junior College . . . performed well in the Tigers' fall 2002 intra-squad games, batting .350 (21-for-60) with four doubles, one triple, one homer and seven stolen bases.

JUNIOR COLLEGE

Batted .420 in 2002 for Odessa JC with 21 doubles, two triples, 18 homers, 74 RBI and a .903 slugging percentage . . . earned third-team all-American and first-team all-region recognition.

HIGH SCHOOL

Product of Dallas Christian High School in Mesquite, Texas . . . recipient of the NAACP Academic Excellence Award . . . also played wide receiver for the football team.

PERSONAL

Full name is William Terrell Stewart . . . parents are William and Paula Stewart . . . has two siblings, Nicole and Trevone . . . credits his father with having the greatest influence upon his athletic career . . . plans to major in sports management at LSU . . . born August 28, 1983.



12

Jake Tompkins

Pitcher
6-0, 195, R-R, Sr., 1L
Auburn, Calif. (Sacramento City College)

2002 Second-Team All-Southeastern Conference
2002 NCAA Regional Most Outstanding Player
2002 LSWA Newcomer of the Year

Outstanding hurler who worked primarily as LSU's closer in 2002; will move into the weekend starting rotation for the 2003 season . . . selected in the 28th round of the 2002 draft by the Texas Rangers . . . named a 2003 third-team pre-season all-American by *Collegiate Baseball* magazine . . . a JUCO all-American who came to LSU from the same JC which produced former LSU pitchers Jake Esteves (1996-98) and Brandon Bowe (1998-99), former LSU catcher Conan Horton (1996-97) and former LSU outfielder David Raymer (2000-02).

2002 SEASON

Appeared in 25 games (eight starts), recording a 7-1 mark and a 2.68 ERA in 87.1 innings with 37 walks, 96 strikeouts and four saves . . . surrendered 78 hits and 37 runs (26 earned), and limited opponents to a .246 batting average . . . allowed only two of 20 inherited runners to score and allowed just one hit in 13 bases-loaded situations . . . completed the season No. 4 in the SEC in ERA (2.68) and strikeouts (96), and No. 6 in opponents' batting average (.246) . . . began the season as a weekend starter, but was moved to the bullpen at the end of March to serve as LSU's closer . . . before the switch to the pen, he was 2-0 with a 3.57 in six starts; after the switch, he was 5-1 with a 1.91 ERA and four saves in 19 appearances (two starts) . . . pitched one



relief inning in the NCAA Super Regional at Rice (June 8), allowing no runs on one hit with one strikeout . . . pitched brilliantly in the NCAA Baton Rouge Regional, as he was named the Most Outstanding Player of the Tournament . . . in two regional appearances (one start), he was 2-0 with a 1.59 ERA in 11.1 innings, recording four walks and 13 strikeouts . . . defeated Southern as a reliever in the first game of the regional (May 31), allowing two runs on four hits with one walk and eight strikeouts . . . came back on one day's rest to start the first game of the regional championship round versus Louisiana-Lafayette (June 2), earning the win by working 6.1 innings and allowing one unearned run on seven hits with three walks and five strikeouts . . . made two relief appearances in the SEC Tournament, posting an 0-1 mark and a 2.25 ERA in four innings while allowing four hits and three runs (one earned) with one walk and five strikeouts . . . 2-0 mark with a 3.41 ERA and four saves in SEC regular-season games; in 37 innings, he allowed 33 hits and 19 runs (14 earned) with 24 walks and 37 strikeouts . . . registered saves in SEC regular-season games versus Mississippi State (March 30), at Auburn (April 7), at South Carolina (April 19) and versus Alabama (May 18) . . . recorded a career-high 10 strikeouts in 4.2 innings in a starting assignment at UNO (April 30); credited with the victory after allowing no runs on two hits with no walks . . . earned first career LSU win in a start versus Birmingham-Southern (Feb. 10), allowing five runs on six hits in 6.2 innings with four walks and seven strikeouts.

JUNIOR COLLEGE

An all-America and all-Bay Valley Conference selection at Sacramento CC . . . as a junior in 2000, he posted a 9-1 mark at a 2.00 ERA with 80 strikeouts and 15 walks in 65 innings.

HIGH SCHOOL

Earned three letters in baseball (pitcher, utility) and two letters in football (quarterback) at Placer High School in Auburn, Calif. . . . earned baseball MVP honors his senior year in the Sierra Foothill League . . . helped lead the football squad as a senior to the SFL championship.

PERSONAL

Full name is Jacob Rocco Tompkins . . . parents are Rod and Virginia Tompkins . . . has one older sister, Shelly, one older brother, Rodney, and one younger brother, Jesse . . . credits his mom for having the greatest influence on his athletic career . . . interests include golf, weightlifting and nutrition . . . majoring in kinesiology at LSU . . . born March 10, 1980.

TOMPKINS' LSU CAREER STATISTICS

Year	G-GS	W-L	ERA	SV	CG	SHO	IP	H	R	ER	BB	SO
2002	25-8	7-1	2.68	4	0	0	87.1	78	37	26	37	96

TOMPKINS' LSU CAREER HIGHS

Innings:	8.0 vs. Long Beach State (3/3/02)
Strikeouts:	10 at New Orleans (4/30/02)
Hits Allowed:	12 vs. Long Beach State (3/3/02)
Runs:	5 vs. Birmingham-Southern (2/10/02)
Earned Runs:	5 vs. Birmingham-Southern (2/10/02)
Walks:	4 (four occasions)

Player Profiles

INTRO
 THIS IS LSU
 PREVIEW
TIGERS
 COACHES
 REVIEW
 HISTORY
 RECORDS
 LSU



23

Chad Vaught

Pitcher
6-4,220,R-R,Sr.,2L
Ferriday, La.(Huntington Academy)

2002 Southeastern Conference Academic Honor Roll
2001 Southeastern Conference Academic Honor Roll

Hard-throwing right-hander who will have an opportunity to contribute on the mound this season after making just one appearance in 2002 due to a shoulder injury . . . a two-time member of the SEC Academic Honor Roll as a zoology major . . . red-shirted as a true freshman in 1999; did not make an appearance during the 2000 season.

2002 SEASON

Started LSU's game versus Southeastern Louisiana (Feb. 12) and pitched very effectively, allowing one run on five hits with one walk and eight strikeouts in six innings . . . was scheduled to start at Centenary (Feb. 20),but was scratched from the line-up just before the game due to pain in his shoulder . . . later underwent surgery on the shoulder and missed the remainder of the season.



2001 SEASON

Made one relief appearance at Louisiana-Monroe (April 26),firing one shutout inning with no hits,one walk and one strikeout.

HIGH SCHOOL

A four-sport letterman at Huntington Academy . . . lettered five seasons in baseball,leading Huntington to the 1994 MPSA State Championship . . . posted a 10-2 pitching mark in 1998, with a 0.91 ERA and 149 strikeouts in 78 innings . . . also batted .441 with 11 home runs . . . earned three all-district selections,two all-metro selections,and one all-state selection . . . named district and team MVP as a senior . . . led team to five district championships . . . was an two-time all-metro selection in football,playing in the MPSA All-Star game as a senior . . . earned three letters in basketball and one letter in tennis . . . coached in baseball by Mitch Ashmore.

PERSONAL

Full name is Chad Schiele Vaught . . . parents are Gerald and Janet Vaught . . . has one sister, Lindsey . . . born February 27, 1980.

VAUGHT'S LSU CAREER STATISTICS

Year	G-GS	W-L	ERA	SV	CG	SHO	IP	H	R	ER	BB	SO
2001	1-0	0-0	0.00	0	0	0	1	0	0	0	1	1
2002	1-1	0-0	1.50	0	0	0	6	5	1	1	1	8
Total	2-1	0-0	1.29	0	0	0	7	5	1	1	2	9

VAUGHT'S LSU CAREER HIGHS

Innings: 6.0 vs.Southeastern Louisiana (2/12/02)
 Strikeouts: 8 vs.Southeastern Louisiana (2/12/02)
 Hits Allowed: 5 vs.Southeastern Louisiana (2/12/02)
 Runs: 1 vs.Southeastern Louisiana (2/12/02)
 Earned Runs: 1 vs.Southeastern Louisiana (2/12/02)
 Walks: 1 vs.Southeastern Louisiana (2/12/02)



9

Dustin Weaver

Catcher
6-0,195,R-R,So.,RS
St.Amant,La.(Southeastern Louisiana)

Contender for the starting job at catcher . . . received a medical redshirt in 2002 after suffering a knee injury early in the season . . . transferred to LSU prior to the 2002 season from Southeastern Louisiana University in Hammond.

2002 SEASON

Appeared in 13 games (three starts),batting .083 (1-for-12) with two strikeouts . . .also threw out one base runner attempting to steal.

AT SLU

Played one season for the Lions,batting .259 in 2001 with one homer and 15 RBI . . . appeared in 31 games with 24 starts.

HIGH SCHOOL

Earned four letters in baseball (catcher) at St.Amant High,where he was a two-time all-state selection and a three-time all-district choice . . . as a senior, hit .396 with 12 doubles,five homers,24 RBI,a .677 slugging percentage and a 1.000 fielding percentage.

PERSONAL

Full name is Dustin Lee Weaver . . . parents are Marvin and Barbara Weaver . . . has one older brother,Vince,a pre-med student at LSU . . . interests include hunting and fishing . . . credits his high school coach,Bob Lemons,with having the greatest influence on his athletic career . . . majoring in kinesiology at LSU . . . born August 25,1981.

WEAVER'S LSU CAREER STATISTICS

Year	G-GS	AB	R	H	Avg.	2B	3B	HR	RBI	BB	SO	SB-SBA
2002*	13-3	12	0	1	.083	0	0	0	0	0	2	0-0

* - redshirt season





47

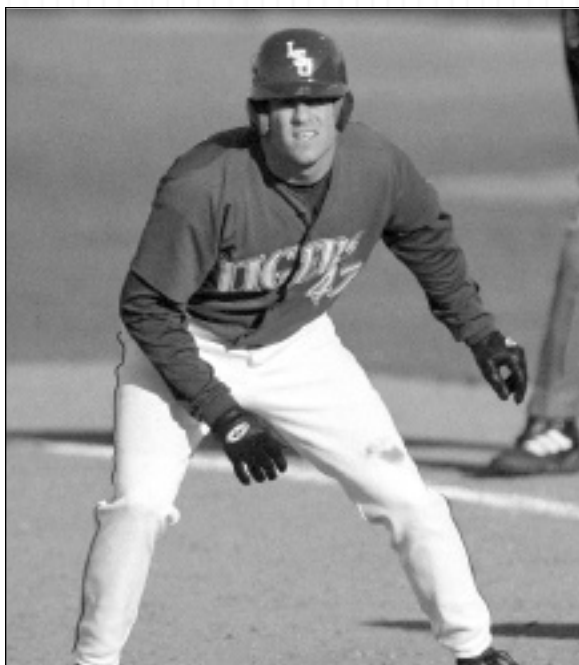
Eric Wiethorn

First Baseman
6-2,200,R-R,Sr.,2L
Newport Beach,Calif.(Orange Coast JC)

Veteran infielder who started 23 games in 2002 at first base and DH . . . should contend for a starting role again in 2003 . . . former JUCO prospect who enrolled at LSU in January, 2001.

2002 SEASON

Appeared in 35 games (23 starts),batting .278 (27-for-97) with six doubles,three homers,17 runs and 17 RBI . . . started 21 games at DH and two games at first base . . . hitless in two at-bats in NCAA Baton Rouge Regional; did not appear in the NCAA Super Regional at Rice . . . did not play in the SEC Tournament,but in SEC regular-season games,batted .262 (11-for-42) with four doubles,two homers,seven runs and five RBI . . . launched first career LSU homer at Centenary (Feb. 20) . . . delivered pinch-hit homer in win over Mississippi State (March 30) and also homered in win at Tennessee (May 4) . . . 4-for-5 at the plate versus Tulane (March 5) with one RBI.



2001 SEASON

Appeared in two games as a reserve first baseman,going 1-for-5 at the plate with one RBI and two runs.

JUNIOR COLLEGE

Played first base at Orange Coast College in Costa Mesa,Calif. . . batted .358 in 2000 with nine homers and 58 RBI . . . served as team captain and was named the squad's offensive player of the year.

HIGH SCHOOL

Played first base,outfield and catcher at Corona del Mar High in Newport Beach . . . hit .333 with two homers as a sophomore, .338 with six homers as a junior and .400 with 12 homers as a

senior . . . served as team captain,earning all-district and all-league honors.

PERSONAL

Full name is Eric Joseph Wiethorn . . . parents are Randy and Adele Wiethorn . . . interests include fishing and golf . . . majoring in general studies . . . born March 6,1981.

WIETHORN'S LSU CAREER STATISTICS

Year	G-GS	AB	R	H	Avg.	2B	3B	HR	RBI	BB	SO	SB-SBA
2001	2-0	5	2	1	.200	0	0	0	1	0	1	0-0
2002	35-23	97	17	27	.278	6	0	3	17	6	17	0-0
Total	37-23	10219	28	.275	6	0	3	18	6	18	0-0	

WIETHORN'S LSU CAREER HIGHS

At-Bats:	6 at Houston (2/24/02)
Hits:	4 vs. Tulane (3/5/02)
Runs Scored:	2 (twice)
Doubles:	1 (six occasions)
Triples:	None
Home Runs:	1 (three occasions)
RBI:	2 (three occasions)
Stolen Bases:	None



38

Brian Wilson

Pitcher
6-1,205,R-R,Jr.,2L
Londonderry,N.H.(Londonderry HS)

SEC Pitcher of the Week (April 29, 2002)

Hard-throwing hurler who began the 2002 season as LSU's closer, but was moved to the starting rotation in early April . . . pitched very effectively as a weekend starter, and he will work in the Tigers' rotation again in 2003 . . . worked 25 innings in the Tigers' fall 2002 intra-squad games, recording a 1.80 ERA with five walks, 20 strikeouts and a .189 opponents' batting average.

2002 SEASON

Appeared in 23 games (10 starts),posting a 10-5 mark and a 3.54 ERA in 94 innings with two saves,31 walks and 71 strikeouts . . . allowed 112 hits and 50 runs (37 earned) . . . turned in an outstanding effort in Game 2 of the NCAA Super Regional at Rice



Player Profiles

INTRO
 THIS IS LSU
 PREVIEW
TIGERS
 COACHES
 REVIEW
 HISTORY
 RECORDS
 LSU

(June 8) despite losing a 3-0 decision . . . worked eight innings against the Owls, allowing three runs on 10 hits with one walk and seven strikeouts . . . defeated Louisiana-Lafayette (June 2) in the championship game of the NCAA Baton Rouge Regional, firing a complete game to send LSU to the Super Regional . . . limited ULL to two runs on eight hits with three walks and seven strikeouts, throwing 126 pitches on just one day's rest - Wilson threw 87 pitches in the regional opener versus Southern (no decision) on May 31 . . . defeated South Carolina in the SEC Tournament (May 23), limiting the Gamecocks to two earned runs on 11 hits in seven innings with one walk and three strikeouts . . . in all post-season games (four starts), he was 2-1 with a 2.89 ERA . . . 5-3 in SEC regular-season games with a 4.01 ERA in 51.2 innings . . . named SEC Pitcher of the Week after a complete-game shutout versus Arkansas (April 27), as he fired a three-hitter with four walks and eight Ks . . . struck out a career-high 11 in eight innings in win at Tennessee (May 4); allowed no runs in the final seven innings after surrendering four runs in the first inning . . . defeated Georgia (April 13) in his first start of the year, allowing no earned runs on seven hits in seven innings with one walk and two strikeouts.

2001 SEASON

Appeared in 20 games (four starts), recording a 3-2 mark and a 5.67 ERA in 39.2 innings with 20 walks and 22 strikeouts . . . earned a win in Game 1 of the NCAA Super Regional vs. Tulane (June 1), working three shutout relief innings with three hits, one walk and two strikeouts . . . earned two saves in the NCAA Baton Rouge Regional, allowing two runs on five hits in four innings with one walk and one strikeout . . . pitched one inning in the SEC Tournament, allowing one run on one hit with one walk and one K . . . for the entire post-season, he was 1-0 with two saves and a team-best 3.38 ERA in eight innings (three walks, four Ks) . . . earned save in NCAA Baton Rouge Regional opener vs. Minnesota (May 25), limiting the Gophers to one run on two hits in 1.1 innings . . . also picked up the save in the regional title game vs. Virginia Commonwealth (May 27), as he pitching 2.2 innings, limiting the Rams to one run on three hits with one walk and one strikeout . . . earned his first save at Alabama (April 28), working one scoreless and hitless inning . . . earned first career LSU win in a start vs. New Orleans (April 3), limiting the Privateers to two runs on four hits in seven innings with one walk and four strikeouts . . . also earned a relief win on April 26 at Louisiana-Monroe with three shutout innings on just one hit.

HIGH SCHOOL

Played baseball, golf and basketball at Londonderry High . . . in 1999 American Legion play, he worked 47 innings, recording a 1.34 ERA with 66 strikeouts and 18 walks . . . also batted .458 with nine doubles, two triples, two homers and 13 RBI.

PERSONAL

Full name is Brian Patrick Wilson . . . mother is Donna Wilson . . . chose to attend LSU because "the campus and culture are very unique, and baseball has a strong background here; one can be taught many things about the game" . . . plans to major in marketing at LSU . . . born March 16, 1982.

WILSON'S LSU CAREER STATISTICS

Year	G-GS	W-L	ERA	SV	CG	SHO	IP	H	R	ER	BB	SO
2001	20-4	3-2	5.67	3	0	0	39.2	40	28	25	20	22
2002	23-10	10-5	3.54	2	2	1	94.0	112	50	37	31	71
Total	43-14	13-7	4.17	5	2	1	133.2	152	78	62	51	93

WILSON'S LSU CAREER HIGHS

Innings:	9.0 (twice)
Strikeouts:	11 at Tennessee (5/4/02)
Hits Allowed:	11 vs. South Carolina (5/23/02)
Runs:	6 (twice)
Earned Runs:	6 at Florida (5/11/02)
Walks:	4 (three occasions)



16

Jon Zeringue

Outfielder/Catcher
6-1, 215, R-R, So., 1L
Thibodaux, La. (E.D. White HS)

Outstanding prospect who was the third-round selection of the Chicago White Sox in the 2001 major league draft . . . played primarily in the outfield in 2002, starting in 30 games . . . projected to become a full-time starter, most likely in right field, in 2003.

2002 SEASON

Appeared in 36 games (30 starts), batting .245 (24-for-98) with five doubles, two homers, 10 runs and eight RBI . . . started 19 games in left field and 11 games at designated hitter . . . hitless in seven at-bats in the NCAA Super Regional at Rice . . . batted .308 (4-for-13) in the SEC Tournament with one double, one homer, three runs and two RBI . . . hit .293 (12-for-41) in SEC regular-season games with three doubles, one homer, two runs and four RBI . . . homered versus South Carolina in SEC Tournament (May 25) . . . delivered two doubles in win at Tennessee (May 5) . . . first career homer, a two-run blast, came in win versus Georgia (April 12) . . . 3-for-4 at the plate versus Southeastern Louisiana (Feb. 12) in first career LSU start.



HIGH SCHOOL

A four-year letterman (catcher) at E.D. White High, where he led his team to four Class 3A state championships (1998, '99, '00, '01) . . . named the state Most Valuable Player in 2001 after batting .468 with 13 homers and 58 RBI . . . completed his career with 40 home runs . . . named the 2001 Gatorade Louisiana Player of the Year . . . a three-time all-state selection and a four-time all-district, all-region and all-parish choice.

PERSONAL

Full name is Jonathan David Zeringue . . . parents are Brian and Jackie Zeringue . . . has one older brother, Justin . . . interests include hunting and fishing . . . says he chose to attend LSU because "It's been my goal since I was a child" . . . credits his father with having the greatest influence on his athletic career . . . plans to major in wildlife management at LSU . . . born August 29, 1983.

ZERINGUE'S LSU CAREER STATISTICS

Year	G-GS	AB	R	H	Avg.	2B	3B	HR	RBI	BB	SO	SB-SBA
2002	36-30	98	10	24	.245	5	0	2	8	6	21	1-1

ZERINGUE'S LSU CAREER HIGHS

At-Bats:	5 vs. South Carolina (5/25/02)
Hits:	3 vs. Southeastern Louisiana (2/12/02)
Runs Scored:	2 vs. South Carolina (5/23/02)
Doubles:	2 at Tennessee (5/4/02)
Triples:	None
Home Runs:	1 (twice)
RBI:	2 vs. Georgia (4/12/02)
Stolen Bases:	1 vs. Mercer (2/16/02)

Statistics vs. 2003 Opponents

INTRO
This is LSU
PREVIEW
TIGERS
COACHES
REVIEW
HISTORY
RECORDS
LSU

LSU CAREER BATTING STATISTICS VS. 2003 OPPONENTS

#3 Blake Gill

OPPONENT	Avg.	G-GS	AB	R	H	2B	3B	HR	RBI	SLG.	BB	HBP	SO	SB-Att
Alabama	.500	3-2	6	0	3	0	0	0	2	.500	1	0	0	0-0
Arkansas	.583	3-3	12	4	7	1	1	0	3	.833	0	0	1	0-0
Auburn	.267	4-4	15	1	4	1	0	0	3	.333	1	0	1	0-0
Centenary	.000	1-1	4	0	0	0	0	0	0	.000	0	0	0	0-0
Florida	.250	1-1	4	1	1	0	0	0	0	.250	0	0	1	0-0
Georgia	.286	2-1	7	2	2	0	0	1	6	.571	1	0	1	0-0
Houston	.500	3-3	14	4	7	2	0	0	1	.643	0	0	4	0-0
Long Beach St.	.364	3-3	11	2	4	1	0	0	0	.455	0	0	1	0-0
UL-Monroe	.188	4-4	16	3	3	0	1	0	3	.313	1	0	2	0-0
Ole Miss	.250	3-3	12	0	3	1	0	0	4	.333	1	0	1	0-0
Mississippi St.	.000	1-1	2	0	0	0	0	0	0	.000	1	0	0	0-0
New Orleans	.500	1-0	2	1	1	0	0	0	0	.500	0	0	0	0-0
South Carolina	.231	5-2	13	1	3	1	0	0	1	.308	1	0	1	0-0
Southeastern La.	.200	2-1	5	2	1	0	0	0	0	.200	1	0	0	1-1
Southern	.250	2-1	4	1	1	0	0	0	0	.250	1	0	0	0-0
Tennessee	.500	1-0	2	1	1	0	0	0	0	1.000	1	0	1	0-0
Tulane	.000	1-1	3	0	0	0	0	0	0	.000	1	0	0	0-0
Vanderbilt	.125	2-2	8	0	1	1	0	0	1	.250	0	0	0	0-0

#21 Clay Harris

OPPONENT	Avg.	G-GS	AB	R	H	2B	3B	HR	RBI	SLG.	BB	HBP	SO	SB-Att
Alabama	.000	1-0	1	0	0	0	0	0	0	.000	0	0	0	0-0
Centenary	.250	1-1	4	1	1	0	0	0	0	.250	0	0	1	0-0
Florida	.200	2-2	10	1	2	1	0	0	1	.300	0	0	4	0-0
Georgia	.500	1-0	2	1	1	0	0	0	0	.500	0	0	0	0-0
UL-Monroe	.500	2-2	10	3	5	0	0	2	5	1.100	0	0	0	0-0
Ole Miss	.000	3-3	10	0	0	0	0	0	0	.000	1	1	2	0-0
Mississippi St.	.200	2-1	5	1	1	0	0	0	0	.400	0	0	1	0-0
Tennessee	.000	1-0	1	0	0	0	0	0	0	.000	0	0	0	0-0
Tulane	.200	1-1	5	1	1	1	0	0	1	.400	0	0	0	0-0
Vanderbilt	.125	2-2	8	0	1	0	0	0	0	.125	0	0	7	0-0

#5 Aaron Hill

OPPONENT	Avg.	G-GS	AB	R	H	2B	3B	HR	RBI	SLG.	BB	HBP	SO	SB-Att
Alabama	.300	4-4	10	3	3	1	0	0	1	.400	3	1	0	1-1
Arkansas	.231	4-4	13	1	3	1	0	1	5	.538	2	0	1	0-0
Auburn	.294	5-4	17	3	5	1	2	1	3	.765	2	1	3	0-0
Florida	.231	7-6	26	7	6	1	0	1	4	.385	2	0	2	0-0
Georgia	.367	7-7	30	6	11	3	0	1	5	.567	1	0	2	2-2
Houston	.333	3-1	6	2	2	0	0	0	0	.333	1	0	0	1-1
Kentucky	.000	2-2	7	0	0	0	0	0	1	.000	0	0	1	0-0
Long Beach St.	.333	2-1	3	0	1	0	0	0	0	.333	0	0	1	0-0
UL-Monroe	.300	4-3	10	3	3	2	0	0	1	.500	1	0	0	1-1
Ole Miss	.500	6-4	14	6	7	1	0	0	2	.571	2	1	1	3-3
Mississippi St.	.476	5-5	21	3	10	1	0	2	9	.857	0	0	2	1-2
New Orleans	.313	4-4	16	5	5	0	0	1	5	.500	2	0	1	1-1
South Carolina	.258	8-8	31	3	8	3	0	1	7	.452	4	0	6	0-1
Southeastern La.	.417	3-3	12	2	5	2	0	0	5	.583	1	0	0	0-0
Southern	.250	4-4	16	4	4	1	0	0	2	.313	4	0	2	3-3
Tennessee	.385	3-3	13	4	5	0	0	1	2	.615	1	0	4	1-1
Tulane	.474	5-4	19	3	9	0	0	2	5	.789	0	0	0	0-0
Vanderbilt	.357	5-3	14	4	5	1	0	1	3	.714	1	1	0	0-0

#1 J.C. Holt

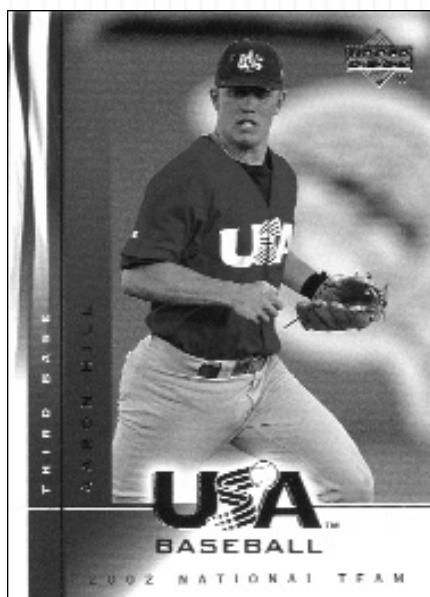
OPPONENT	Avg.	G-GS	AB	R	H	2B	3B	HR	RBI	SLG.	BB	HBP	SO	SB-Att
Alabama	.417	3-3	12	2	5	0	0	0	0	.417	0	0	4	1-2
Arkansas	.500	3-3	12	6	6	0	2	0	1	.833	0	1	1	2-2
Auburn	.176	4-4	17	3	3	1	0	1	1	.412	1	0	2	0-0
Centenary	.000	1-0	1	0	0	0	0	0	0	.000	1	0	1	0-0
Florida	.333	3-2	9	1	3	1	0	0	0	.444	2	0	2	0-0
Georgia	.800	1-1	5	2	4	0	0	0	2	.800	1	0	0	0-0
Houston	.333	3-2	9	1	3	0	0	0	2	.333	2	0	3	0-0
Long Beach St.	.364	3-2	11	2	4	0	0	0	0	.364	1	0	5	0-0
UL-Monroe	.316	4-4	19	3	6	1	0	1	5	.526	1	0	3	2-2
Ole Miss	.214	3-3	14	2	3	0	1	0	3	.357	1	0	4	1-1
Mississippi St.	.500	1-1	4	2	2	1	0	0	0	.750	0	0	1	0-0
New Orleans	.750	2-0	4	3	3	0	0	0	1	.750	0	0	1	1-1
South Carolina	.286	4-3	14	4	4	1	0	1	2	.571	2	0	3	0-0
Southeastern La.	.000	1-1	4	0	0	0	0	0	0	.000	0	0	2	0-0
Southern	.800	1-1	5	1	4	0	1	0	0	1.200	0	0	0	0-0
Tennessee	.667	1-0	3	0	2	0	0	0	3	.667	0	0	1	0-0
Tulane	.250	1-1	4	0	1	0	0	0	0	.250	0	1	2	0-0
Vanderbilt	.375	3-2	8	4	3	0	1	0	1	.625	1	0	0	0-0

#47 Eric Wiethorn

OPPONENT	Avg.	G-GS	AB	R	H	2B	3B	HR	RBI	SLG.	BB	HBP	SO	SB-Att
Alabama	.000	1-1	3	1	0	0	0	0	0	.000	1	0	0	0-0
Auburn	.000	2-0	2	0	0	0	0	0	0	.000	0	0	1	0-0
Centenary	.500	1-1	2	1	1	0	0	1	1	2.000	0	0	0	0-0
Georgia	.200	2-2	5	1	1	1	0	0	1	.400	1	0	0	0-0
Houston	.333	2-2	9	3	3	0	0	0	1	.333	0	0	0	0-0
Long Beach St.	.000	1-0	3	0	0	0	0	0	0	.000	0	0	0	0-0
UL-Monroe	.000	1-0	2	0	0	0	0	0	0	.000	0	0	0	0-0
Mississippi St.	.667	2-1	6	1	4	1	0	1	1	1.333	0	0	1	0-0
New Orleans	.167	2-2	6	1	1	1	0	0	2	.333	1	1	3	0-0
Nicholls St.	.000	1-0	2	1	0	0	0	0	0	.000	0	0	0	0-0
South Carolina	.100	3-3	10	2	1	1	0	0	1	.200	0	0	2	0-0
Southeastern La.	.250	2-0	4	0	1	0	0	0	1	.250	0	0	0	0-0
Southern	.333	1-1	3	1	1	1	0	0	2	.667	1	0	0	0-0
Tennessee	.273	3-3	11	1	3	0	0	1	2	.545	1	0	2	0-0
Tulane	.400	2-2	10	0	4	0	0	0	1	.400	0	0	3	0-0
Vanderbilt	.400	2-1	5	1	2	1	0	0	0	.600	0	0	0	0-0

#16 Jon Zeringue

OPPONENT	Avg.	G-GS	AB	R	H	2B	3B	HR	RBI	SLG.	BB	HBP	SO	SB-Att
Alabama	.333	1-1	3	0	1	0	0	0	0	.333	0	0	0	0-0
Auburn	.000	1-0	1	0	0	0	0	0	0	.000	0	0	0	0-0
Florida	.286	2-2	7	0	2	0	0	0	0	.286	0	0	1	0-0
Georgia	.200	2-2	5	1	1	0	0	1	2	.800	0	0	2	0-0
Houston	.000	1-1	1	0	0	0	0	0	0	.000	0	0	1	0-0
Long Beach St.	.333	1-1	3	1	1	1	0	0	0	.667	0	0	1	0-0
Mississippi St.	.500	1-1	4	1	2	0	0	0	1	.500	0	0	1	0-0
New Orleans	.250	2-2	4	0	1	0	0	0	0	.250	1	0	1	0-0
South Carolina	.286	6-6	21	3	6	1	0	1	3	.476	0	0	4	0-0
Southern	.286	2-2	7	0	2	0	0	0	1	.286	0	0	2	0-0
Tennessee	.400	3-3	10	0	4	3	0	0	0	.700	0	0	2	0-0
Tulane	.091	3-3	11	1	1	0	0	0	1	.091	2	0	3	0-0
Vanderbilt	.000	1-1	3	0	0	0	0	0	0	.000	0	0	2	0-0



LEFT: Aaron Hill helped lead Team USA to the silver medal at the 2002 World University Baseball Championships.



RIGHT: An LSU flag flies above the entrance to Omaha's Rosenblatt Stadium.

Statistics vs. 2003 Opponents

LSU CAREER PITCHING STATISTICS VS. 2003 OPPONENTS

#21 Clay Harris

OPPONENT	ERA	W-L	G	GS	CG	SV	IP	H	R	ER	BB	SO	WP	BK	HBP
Alabama	0.00	0-0	1	0	0	0	0.1	0	0	0	0	1	0	0	0
Auburn	15.00	0-0	1	0	0	0	3.0	6	5	5	2	0	0	0	0
Houston	9.00	0-0	1	1	0	0	2.0	8	6	2	0	1	0	0	0
Long Beach St.	0.00	0-0	1	0	0	0	1.0	0	0	0	0	1	0	0	0
UL-Monroe	3.86	1-0	1	1	0	0	7.0	8	3	3	0	3	0	0	0
New Orleans	0.00	0-0	1	0	0	0	3.1	4	0	0	0	5	0	0	0
South Carolina	3.00	0-0	1	0	0	0	3.0	0	2	1	1	2	0	0	0
Southeastern La.	4.76	0-0	2	1	0	0	5.2	9	5	3	0	3	0	0	0
Southern	0.00	1-0	1	1	0	0	5.0	2	0	0	0	2	0	0	0
Tulane	5.19	0-0	2	1	0	0	8.1	13	7	5	1	9	1	0	0

#46 Lane Mestepey

OPPONENT	ERA	W-L	G	GS	CG	SV	IP	H	R	ER	BB	SO	WP	BK	HBP
Alabama	0.50	2-0	2	2	2	0	18.0	9	2	1	2	11	0	0	1
Arkansas	3.07	1-1	2	2	1	0	14.1	15	8	5	2	7	0	0	1
Auburn	3.27	3-0	3	3	1	0	22.0	28	11	8	9	11	0	0	2
Florida	3.77	1-0	2	2	0	0	14.1	18	6	6	5	4	1	1	0
Georgia	1.62	1-0	2	2	1	0	16.2	16	5	3	4	11	0	0	0
Houston	4.26	1-0	2	1	1	0	12.2	21	8	6	3	6	0	0	0
Kentucky	1.00	1-0	1	1	1	0	9.0	9	2	1	1	5	0	0	0
Long Beach St.	1.13	1-0	1	1	0	0	8.0	5	1	1	0	8	1	0	1
UL-Monroe	1.13	1-0	1	1	0	0	8.0	7	1	1	0	5	0	0	0
Ole Miss	2.25	3-0	3	3	2	0	24.0	22	9	6	6	7	0	0	1
Mississippi St.	1.93	1-0	3	2	0	0	18.2	19	4	4	0	16	0	0	3
South Carolina	3.24	2-0	2	2	0	0	16.2	19	9	6	5	7	0	0	1
Southeastern La.	0.00	0-0	1	0	0	1	0.1	0	0	0	0	1	0	0	0
Tennessee	2.25	0-1	1	1	1	0	8.0	4	2	2	1	3	0	0	0
Tulane	2.04	0-0	2	2	0	0	17.2	16	8	4	2	8	0	0	3
Vanderbilt	6.60	0-2	2	2	1	0	15.0	19	12	11	3	7	1	0	0

#34 Bo Pettit

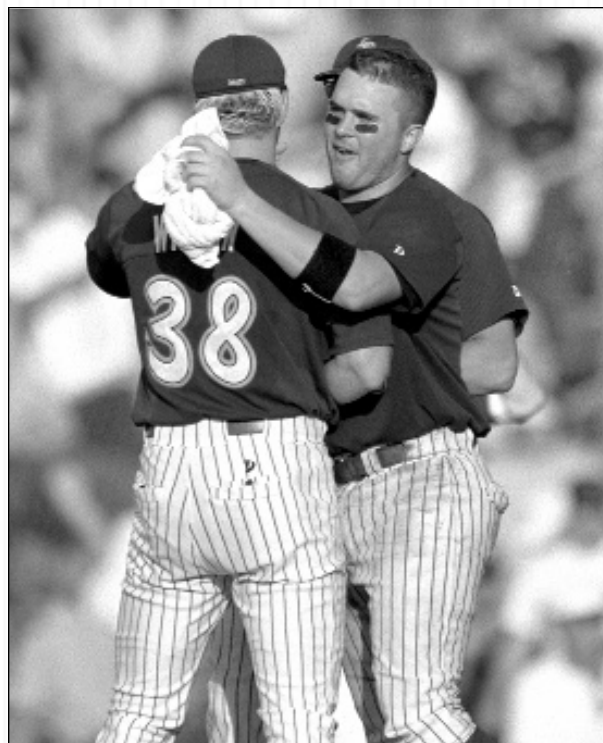
OPPONENT	ERA	W-L	G	GS	CG	SV	IP	H	R	ER	BB	SO	WP	BK	HBP
Alabama	1.00	1-0	1	1	1	0	9.0	5	1	1	5	9	0	0	0
Arkansas	4.35	0-0	2	2	0	0	10.1	12	5	5	3	12	1	0	1
Auburn	4.50	0-1	1	0	0	0	2.0	1	3	1	5	3	0	0	0
Florida	2.25	2-0	3	1	0	0	12.0	10	4	3	7	8	2	0	1
Georgia	3.38	1-0	1	1	0	0	8.0	7	4	3	1	7	1	0	1
Houston	6.75	0-1	2	1	0	0	6.2	11	6	5	4	4	1	1	0
Kentucky	2.69	1-0	1	1	0	0	6.2	9	2	2	2	6	1	0	0
Long Beach St.	5.14	0-1	1	1	0	0	7.0	7	6	4	3	5	0	1	1
UL-Monroe	2.45	0-0	1	0	0	0	3.2	3	1	1	1	1	0	0	0
Ole Miss	4.77	1-1	2	1	0	0	11.1	12	9	5	11	17	0	0	1
Mississippi St.	6.20	1-2	3	2	0	0	11.2	16	11	9	9	6	0	0	1
New Orleans	1.29	3-0	4	4	0	0	14.0	6	3	2	4	15	1	0	1
Nicholls St.	4.50	0-0	1	0	0	0	2.0	2	1	1	0	5	0	0	0
Northwestern St.	0.00	0-0	1	0	0	0	3.0	1	0	0	1	4	0	0	0
South Carolina	7.71	0-3	3	2	1	0	14.0	18	13	12	4	10	2	0	2
Southern	3.60	1-0	1	1	0	0	5.0	2	2	2	1	3	0	0	1
Tennessee	2.57	1-0	1	1	0	0	7.0	5	2	2	6	7	0	0	0
Tulane	2.30	2-0	3	2	1	0	15.2	9	4	4	4	18	0	0	0
Vanderbilt	0.00	1-0	1	1	1	0	9.0	4	0	0	2	12	0	0	0

#12 Jake Tompkins

OPPONENT	ERA	W-L	G	GS	CG	SV	IP	H	R	ER	BB	SO	WP	BK	HBP
Alabama	2.70	0-0	1	0	0	1	3.1	3	1	1	2	3	0	0	0
Arkansas	2.45	1-0	1	0	0	0	3.2	4	2	1	4	2	1	0	0
Auburn	0.00	0-0	2	0	0	1	5.1	4	0	0	2	7	1	0	0
Florida	9.00	1-0	2	0	0	0	4.0	4	5	4	6	3	0	0	0
Georgia	0.00	0-0	1	0	0	0	1.0	0	0	0	1	1	0	0	0
Long Beach St.	3.38	0-0	1	1	0	0	8.0	12	4	3	0	8	0	0	1
Ole Miss	5.06	0-0	1	1	0	0	5.1	7	4	3	4	6	0	0	0
Mississippi St.	0.00	0-0	1	0	0	1	2.2	0	0	0	1	4	0	0	0
New Orleans	0.00	1-0	2	1	0	0	5.2	2	0	0	0	11	0	0	0
South Carolina	1.50	0-1	4	0	0	0	6.0	7	5	1	3	7	0	1	0
Southern	4.50	1-0	2	0	0	0	6.0	5	4	3	3	10	0	0	0
Tennessee	0.00	0-0	1	0	0	0	2.0	2	0	0	0	2	1	0	1
Vanderbilt	4.69	0-0	1	1	0	0	7.2	6	5	4	2	7	0	0	0

#38 Brian Wilson

OPPONENT	ERA	W-L	G	GS	CG	SV	IP	H	R	ER	BB	SO	WP	BK	HBP
Alabama	5.69	1-0	2	1	1	1	6.1	8	4	4	3	5	0	0	0
Arkansas	0.00	1-0	3	1	1	0	11.0	5	0	0	6	9	0	1	1
Auburn	9.00	1-0	2	0	0	0	6.0	7	6	6	1	6	0	0	0
Centenary	0.00	1-0	1	0	0	1	1.2	0	0	0	0	1	0	0	0
Florida	8.53	0-1	1	1	0	0	6.1	8	6	6	4	1	0	1	1
Georgia	0.00	1-0	1	1	0	0	7.0	7	1	0	1	2	0	0	0
Houston	0.00	0-1	2	0	0	0	2.1	3	3	0	1	1	1	0	0
Long Beach St.	0.00	1-0	1	0	0	0	3.0	2	0	0	0	1	0	0	0
UL-Monroe	3.60	1-0	3	0	0	2	5.0	3	2	2	1	1	0	0	1
Ole Miss	15.75	0-0	3	1	0	0	4.0	9	8	7	3	2	0	1	0
Mississippi St.	6.75	0-0	1	0	0	0	4.0	5	3	3	1	6	0	0	0
New Orleans	2.89	1-0	3	2	0	0	9.1	6	3	3	3	5	0	0	1
South Carolina	4.15	1-2	3	3	0	0	17.1	23	11	8	7	14	2	1	1
Southern	5.19	0-1	2	2	0	0	8.2	16	6	5	2	5	1	0	0
Tennessee	4.50	1-0	1	1	0	0	8.0	7	4	4	4	11	2	0	0
Tulane	0.00	1-0	1	0	0	0	3.0	3	0	0	1	2	0	0	0
Vanderbilt	2.70	0-1	2	0	0	0	3.1	5	4	1	1	0	0	0	0



LEFT: Bo Pettit was named SEC Pitcher of the Week on April 15, 2002, after defeating Tulane and Georgia.

RIGHT: Brian Wilson is congratulated by catcher Chris Phillips after firing a complete-game shutout versus Arkansas on April 27, 2002.