



## INTRO

2 Quick Facts

## THIS IS LSU

4 Campus Life  
6 University Club  
7 LSU Golf House  
8 Practice Facilities  
10 Cox Communications Academic Center  
12 Athletic Training  
13 Strength and Conditioning  
14 A Championship Tradition  
16 LSU Greats  
18 Prominent Alumni  
20 City of Baton Rouge  
21 State of Louisiana  
22 Athletics Director  
23 LSU Administration

## PREVIEW

26 Season Preview  
28 Tournament Information  
30 SEC Opponents

## THE TEAM

32 Head Coach Chuck Winstead  
34 Assistant Coach Shane Warren  
35 Jarrod Barsamian  
36 Brent Blaum  
37 Bryant Lach  
38 Andrew Loupe  
39 John Peterson  
40 Clayton Rotz  
41 Brian Leveille/Austin Gutzell  
42 Josh Jones/Sang Yi

## REVIEW

44 Season Review  
46 2007-08 Final Statistics and Results  
47 2007-08 Round-by-Round Results  
48 2007-08 Tournament Summaries  
50 SEC Recap

## HISTORY

52 All-Time Honors  
54 All-Time Tournament Titles  
55 Tournament History  
56 LSU at the SEC Championships  
57 LSU at the NCAA Championships  
58 Record Book  
60 Tigers on Tour  
63 Letterwinners  
64 LSUsports.net

# MEN'S GOLF CONTENTS

2008 - 2009

INTRO

THIS IS LSU

PREVIEW

TIGERS

REVIEW

HISTORY

## University

<b>Location:</b>	Baton Rouge, La.
<b>Founded:</b>	1860
<b>Enrollment:</b>	25,896
<b>Nickname:</b>	Tigers or Fighting Tigers
<b>Home Course:</b>	The University Club (Par 72)
<b>Mascot:</b>	Mike VI (Live Bengal Tiger)
<b>Colors:</b>	Purple and Gold
<b>Conference:</b>	Southeastern
<b>Affiliation:</b>	NCAA Division I
<b>President:</b>	Dr. John V. Lombardi
<b>Chancellor:</b>	Dr. Michael V. Martin
<b>Faculty Representative:</b>	Dydia DeLysler

## Athletic Department

<b>Athletics Director:</b>	Joe Alleva
<b>Sr. Associate AD/Operations:</b>	Verge Ausberry
<b>Sr. Associate AD/Business:</b>	Mark Ewing
<b>Sr. Associate AD/Senior Women's Administrator:</b>	Judy Southard
<b>Sr. Associate AD/External Relations:</b>	Herb Vincent
<b>Associate AD/Internal Relations:</b>	Bo Bahnsen
<b>Associate AD/Operations:</b>	Eddie Nunez
<b>Associate AD/Compliance:</b>	Bo Kerin
<b>Associate AD/Student Services:</b>	Miriam Segar
<b>Assistant AD/Facility Services:</b>	Ronnie Haliburton
<b>Assistant AD/Ticket Manager:</b>	Brian Broussard

## Men's Golf Staff

<b>Head Coach:</b>	<b>Chuck Winstead</b> Alma Mater: LSU, 1991 Year at LSU: Fourth
<b>Assistant Coach:</b>	<b>Shane Warren</b> Alma Mater: Alabama, 1994 Year at LSU: Fourth

## Team Information

<b>2007-08 Record:</b>	91-80-4
<b>2007-08 SEC Finish:</b>	T8th
<b>Postseason:</b>	NCAA West Regional
<b>Letterwinners Returning/Lost:</b>	6/4
<b>Top Returnees:</b>	Jarrod Barsamian (Sr.), Bryant Lach (Jr.), Andrew Loupe (So.), John Peterson (So.), Clayton Rotz (So.)
<b>Top Newcomers:</b>	Austin Gutsell (Fr.), Josh Jones (Fr.), Sang Yi (Fr.)
<b>Inaugural Season:</b>	1932
<b>Tournament Titles:</b>	104
<b>NCAA Championships:</b>	4
<b>SEC Championships:</b>	15

## Sports Information

<b>Assistant AD/Sports Information Director:</b>	Michael Bonnette
<b>Senior Associate SID:</b>	Kent Lowe
<b>Associate SID:</b>	Caroline Domecq
<b>Associate SID:</b>	Bill Franques
<b>Associate SID:</b>	Bill Martin
<b>Associate SID:</b>	Will Stafford
<b>Graduate Assistant:</b>	Jake Terry
<b>Publications Director:</b>	Jason Feirman
<b>Graphic Design Coordinators:</b>	Krystal Bennett, Courtney Wilburn
<b>Publications Student Assistant:</b>	Kenli Langlois
<b>Photographer:</b>	Steve Franz
<b>Men's Golf Contact:</b>	Will Stafford
<b>Secretary:</b>	Pat Fredericks
<b>Student Assistants:</b>	Ashley Bourdier, Molly Clark, Jesse Delerno, R.J. Marse, Brianna Mickles, Elizabeth Stuart, Chad Vignes

## Contact Information (area code 225)

<b>Sports Information:</b>	578-8226
<b>Sports Information Fax:</b>	578-1861
<b>Will Stafford's Cell:</b>	436-4389
<b>Will Stafford's Email:</b>	wstaff2@lsu.edu
<b>Men's Golf Office:</b>	578-1280
<b>LSU Athletic Department:</b>	578-0628
<b>Ticket Office:</b>	578-2184
<b>Website:</b>	www.LSUsports.net

## Media Information

The 2008-09 LSU Men's Golf Media Guide was written to provide members of the media with statistics and information needed to adequately cover the LSU men's golf team. For further information on the team and the scheduling of interviews with head coach Chuck Winstead, assistant coach Shane Warren or any of the student-athletes, please contact Will Stafford in the LSU Sports Information Department at (225) 578-8226.

### MAILING ADDRESS

LSU Sports Information  
P.O. Box 25095  
Baton Rouge, LA 70894-5095

### OVERNIGHT MAILING ADDRESS

Athletic Administration Building, Fifth Floor  
North Stadium Drive  
Baton Rouge, LA 70894

## 2008-09 Men's Golf Schedule

### SEPTEMBER

12-14	Gopher Invitational	Wayzata, Minn.	Spring Hill GC
22-23	Shoal Creek Intercollegiate	Birmingham, Ala.	Shoal Creek CC

### OCTOBER

13-14	Squire Creek Invitational	Choudrant, La.	Squire Creek CC
27-29	Isleworth Collegiate Championship	Windermere, Fla.	Isleworth G&CC

### FEBRUARY

14-15	Gator Invitational	Gainesville, Fla.	Mark Bostick GC
22-23	John Hayt Invitational	Ponte Vedra Beach, Fla.	Sawgrass CC

### MARCH

20-22	Schenkel/E-Z-Go Invitational	Statesboro, Ga.	Forest Heights CC
29-31	Hootie at Bulls Bay Intercollegiate	Awendaw, S.C.	Bulls Bay GC

### APRIL

6-7	Bank of America Intercollegiate	Jackson, Miss.	Reunion G&CC
17-19	SEC Men's Golf Championships	St. Simons Island, Ga.	Frederica GC

### MAY

14-16	NCAA Regionals	TBA	TBA
27-30	NCAA Men's Golf Championships	Toledo, Ohio	Inverness GC

## Support Staff



**Will Stafford**  
Sports Information



**Jason Shaw**  
Academic Counselor



**Kristin Price**  
Learning Specialist



**Bo Lowery**  
Athletic Trainer



**Paul Jackson**  
Strength and  
Conditioning Coach

## Credits

**Editor:**  
Will Stafford

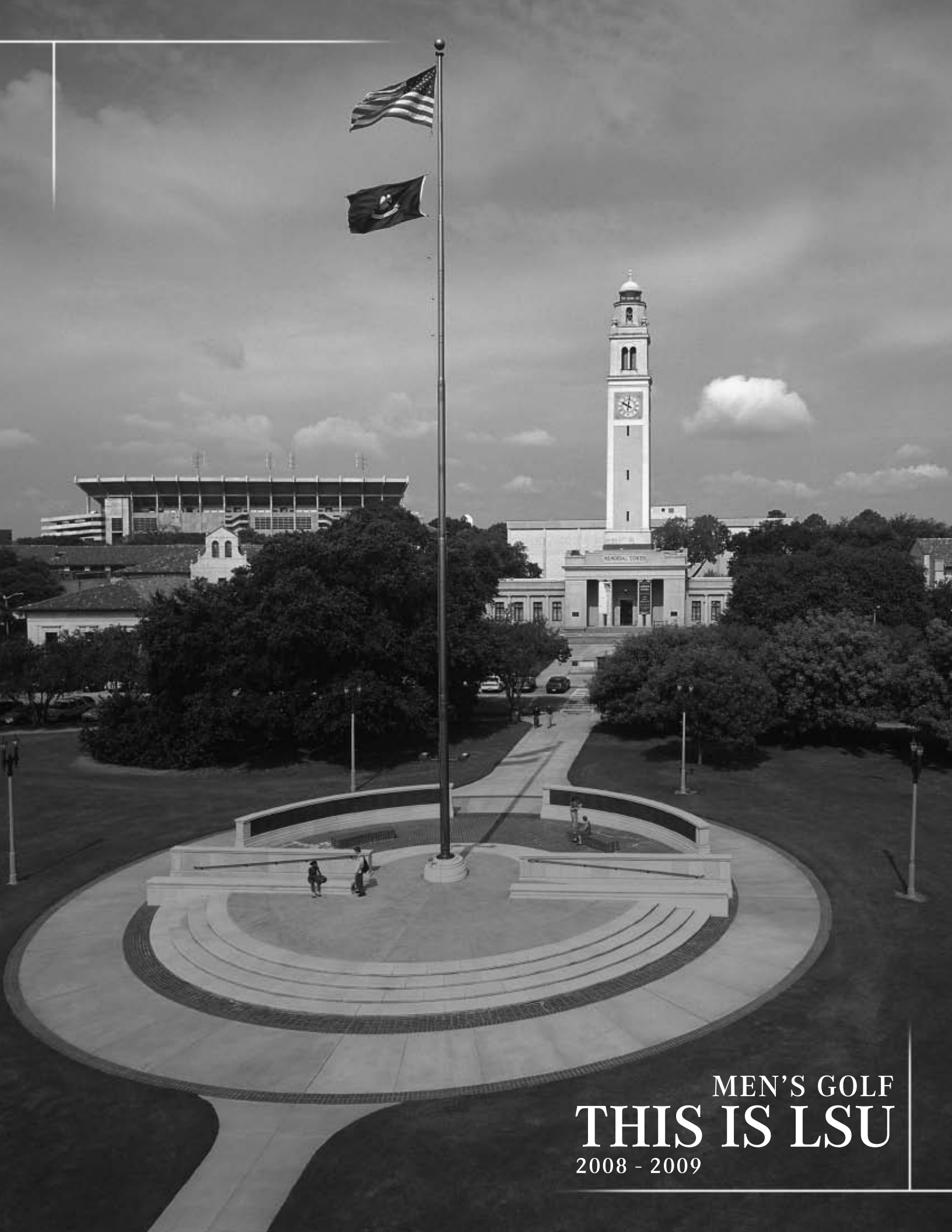
**Editorial Assistance:**  
Chad Vignes

**Design and Layout:**  
Kenli Langlois  
Jason Feirman

**Covers:**  
Kenli Langlois  
Jason Feirman

**Photography:**  
Steve Franz  
Andrew Fredrickson  
Bryan Wayne

**Printer:**  
EBSCO Media



MEN'S GOLF  
**THIS IS LSU**  
2008 - 2009



For the first time in school history, LSU was ranked in the first tier for “Best National Universities” in the 2009 edition of U.S. News & World Reports America’s Best Colleges.

# Campus LIFE



Location: Baton Rouge, La.  
 Founded: January 2, 1860  
 Enrollment: 25,896  
 President: Dr. John V. Lombardi  
 Major Fields for Bachelor’s Degrees: 72  
 Major Fields for Master’s Degrees: 72  
 Major Fields for Doctoral Degrees: 54



LSU’s Memorial Tower (top main photo) was one of the first structures completed on the present campus and sits east of the quadrangle (above, left). It represents the University as a memorial to those who gave their lives during World War I. Although it currently houses the LSU Anglo-American Art Museum, plans are in process to return Memorial Tower to a military museum as originally intended. The University lakes (above, right) on the LSU campus give various recreational options.

Louisiana State University and Agricultural & Mechanical College has, throughout its 144-year history, served the people of Louisiana, the region, the nation and the world. LSU is creating a revolution, one of pervasive change and advancement. For the past five years, the focus of the LSU community has been an increased commitment to excellence. Our progress has been dramatic and shows no sign of stopping.

Having witnessed many of yesterday’s possibilities become today’s tangible realities, the LSU community set forth to capitalize on its success. The goal was to improve our standing as a nationally competitive flagship university. Following intense discussions among the LSU Board of Supervisors, campus administrators, faculty, and student leaders, the objectives required to reach this status crystallized, providing the impetus for LSU’s National Flagship Agenda.

# Why LSU?

**David Toms**  
2001 PGA Champion  
and LSU Graduate



“As far back as I can remember, I have literally bled purple and gold. It never crossed my mind that there was anywhere else to go other than LSU. The experiences and relationships that I developed at LSU have been an integral part of my life. No other colleges existed in my mind. I am fortunate to have attended a place that I considered a dream and look forward to my association with the University until the day I die.”

“It was really quite an honor to be able to play for LSU. Being from Lockport, everybody down there is a big LSU fan. Once I graduated from high school and had to make the decision where I was going to play, LSU was the obvious choice because I had grown up an LSU fan and it was a place where my family could watch me play. LSU really helped me grow both as a player and a person. I have nothing but fond memories of the place.”



**Tommy Hodson**  
Quarterback (1986-89)  
All-SEC

“I had a lot of choices coming out of high school, but when I visited LSU it was different. It felt like a family with the coaches and the players. LSU was the best place for me to go. It had everything I wanted, both football and academically. The atmosphere and the coaches made me feel very comfortable around them as well as the academic people and everybody involved with the program. I was from down the road in Louisiana and could have gone anywhere to school, but I chose to stay close to home.”

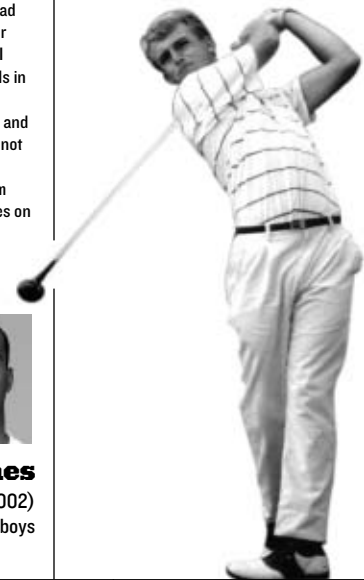


**Jarvis Green**  
Defensive End (1998-01)  
New England Patriots

“I was basically an in-state guy and had always thought about going to LSU for football and to get a good education. I made a lot of visits to different schools in my selection process, but everything always pointed toward LSU. My heart and my family guided me in that direction not just for the athletics, but for the academics as well. From top to bottom LSU has good people from the coaches on down the line.”



**Bradie James**  
Linebacker (1999-2002)  
Dallas Cowboys



College of Agriculture  
Agricultural Business (B.S.)  
Agribusiness Finance  
Agribusiness Management  
International Marketing  
Animal, Dairy, & Poultry Sciences (B.S.)  
Animal Sciences  
Dairy Foods Technology  
Dairy Production  
Poultry Sciences  
Preveterinary Medicine-Animal  
Preveterinary Medicine-Dairy  
Preveterinary Medicine-Poultry  
Science & Technology-Animal Science  
Science & Technology-Dairy Science  
Science & Technology-Poultry Science  
Environmental Management Systems (B.S.)  
Environmental Science  
Policy Analysis  
Resource Conservation  
Family, Child, & Consumer Sciences (B.S.)  
Consumer Science  
Human Services Management  
Food Science & Technology (B.S.)  
Food Business/Marketing  
Food Chemistry & Analysis  
Food Processing & Technology  
Food Safety/Applied Microbiology  
Forestry (Forest Management) (B.S.F.)  
Ecological Restoration  
Forest Products  
Forest Resource Management  
Nutritional Sciences (B.S.)  
Dietetics  
Nutritional Sciences/Premedical  
Plant & Soil Systems (B.S.)  
Agricultural Pest Management-Entomology  
Agricultural Pest Management-Plant Pathology  
Crop Management  
Horticultural Science  
Ornamentals, Olericulture, & Pomology  
Soil Science  
Turfgrass Management  
Urban Entomology  
Textiles, Apparel, & Merchandising (B.S.)  
Apparel Design  
Merchandising  
Textile Science  
Vocational Education (B.S.)  
Adult, Extension, International Education  
Agricultural Education  
Business Education

Career Development  
Home Economics Education  
Human Resource Leadership and Development  
Industrial Education  
Training & Development  
Wildlife & Fisheries (B.S.)  
Aquaculture  
Conservation Biology  
Fisheries  
Preveterinary Medicine-Wildlife & Fisheries  
Wetland Science  
Wildlife Ecology  
Wildlife Law Enforcement

College of Art & Design  
Architecture (B.Arch.)  
Interior Design (B.I.D.)  
Landscape Architecture (B.L.A.)  
Studio Art (B.F.A.)  
Ceramics  
Graphic Design  
Jewelry/Metalsmithing  
Painting  
Photography  
Printmaking  
Sculpture

College of Arts & Sciences  
Anthropology (B.A.)  
Communication Disorders (B.A.)  
Communication Studies (B.A.)  
Economics (B.A.)  
English (B.A.)  
Creative Writing  
Literature  
Secondary Education-English  
Writing & Culture  
French (B.A.)  
French & Francophone Cultural Studies  
French & Francophone Political Studies  
International Business  
International Studies  
Literary Studies  
Secondary Education-French  
General Studies (B.G.S.)  
Geography (B.A. & B.S.)  
German (B.A.)  
History (B.A.)  
Secondary Education-History  
International Studies (B.A.)  
Africa & the Middle East

Asia  
Europe  
Global Studies  
Latin America  
Russia & Central Asia  
Latin (B.A.)  
Liberal Arts (B.A.)  
African & African American Studies  
Art History  
Studio Art  
Mathematics (B.S.)  
Actuarial Science  
Applied/Discrete Mathematics  
Applied Mathematics/Communications  
Engineering  
Computer Science  
Mathematics  
Secondary Education-Mathematics  
Philosophy (B.A.)  
Religious Studies  
Political Science (B.A.)  
Psychology (B.A. & B.S.)  
Russian Area Studies (B.A.)  
Sociology (B.A.)  
Applied Sociology  
Criminology  
Rural Sociology  
Spanish (B.A.)  
Secondary Education-Spanish  
Women's & Gender Studies (B.A.)

College of Basic Sciences  
Biochemistry (B.S.)  
Biological Sciences (B.S.)  
Marine Biology  
Secondary Education-Biology  
Chemistry (B.S.)  
Biological Chemistry  
Chemical Physics  
Chemistry  
Chemistry and a Second Discipline  
Environmental Chemistry  
Materials  
Polymers  
Preprofessional Chemistry  
Secondary Education-Chemistry  
Computer Science (B.S.)  
Geology (B.S. Geol.)  
Environmental Geology  
Geology  
Microbiology (B.S.)  
Physics (B.S.)  
Astronomy

Medical Physics  
Physics  
Physics and a Second Discipline  
Secondary Education-Physics  
E. J. Ourso College of Business  
Accounting (B.S.)  
Management Accounting  
Economics (B.S.)  
Empirical Economic Analysis  
Finance (B.S.)  
General Business Administration (B.S.)  
Business Administration-Prelaw  
Business & Public Administration  
Information Systems & Decision Sciences (B.S.)  
International Trade & Finance (B.S.)  
Empirical Economics Analysis  
Management (B.S.)  
Entrepreneurship  
Human Resource Management  
Management  
Marketing (B.S.)  
College of Education  
Early Childhood Education: PK-3 Teacher Certification (B.S.)  
Elementary Grades Education (B.S.)  
Four-Year Teacher Certification, Grades 1-6  
Holmes Certification  
Kinesiology (B.S.)  
Athletic Training  
Fitness Studies  
Health & Physical Education Teacher Certification  
Human Movement Science  
Sports Studies  
Secondary Education (B.S.)  
Art

College of Engineering  
Biological Engineering (B.S.B.E.)  
Chemical Engineering (B.S.Che.E.)  
Civil Engineering (B.S.C.E.)  
Computer Engineering (B.S.E.E.)  
Construction Management (B.S.C.M.)  
Electrical Engineering (B.S.E.E.)  
Environmental Engineering (B.S.Env.E.)  
Industrial Engineering (B.S.I.E.)  
Mechanical Engineering (B.S.M.E.)  
Petroleum Engineering (B.S.P.E.)

Manship School of Mass Communication  
Mass Communication (B.A.M.C.)  
Advertising  
Electronic Media  
Journalism  
Political Communication  
Public Relations

College of Music & Dramatic Arts  
Arts  
Music (B.A.)  
Music (B.M.)  
Brass  
Composition  
Harp  
Organ  
Percussion  
Piano Pedagogy  
Piano Performance  
String  
Voice  
Woodwind  
Music Education (B.M.Ed.)  
Instrumental  
Vocal  
Theatre (B.A.)  
Arts Administration  
Design/Technology  
Literature, History, & Theory  
Performance  
Theatre Studies

Preprofessional Programs \*  
(Nondegree)  
Allied Health Programs  
Dental Hygiene  
Dental Laboratory Technology  
Ophthalmic Medical Technology  
Physician's Assistant  
Premedical Technology  
Prenursing  
Preoccupational Therapy  
Prephysical Therapy  
Rehabilitation Counseling  
Respiratory Therapy

\* The final two-three years of these preprofessional programs are offered by the LSU Health Sciences Center and/or other medical schools. These are nondegree programs.



# University CLUB

For the past decade, the LSU men's and women's golf teams have called The University Club home. The course received the honor of being ranked the 13th best home for college golf in the country according to a survey published in the September 2005 issue of *Golf Digest*. The evaluation by *Golf Digest* ranked the Top 15 home courses in college golf and included such criteria as shot values, resistance to scoring, course layout and design, memorability and conditioning.

"Being included in such a list is a nice honor," said LSU head coach Chuck Winstead. "Jim Lipe, the designer of the University Club, is an LSU alum and is a proven golf course architect. He's been Jack Nicklaus' right-hand man on his design team for years. It's certainly a great honor to be included on the list."

The course opened in 1998 under the design of Lipe and is a par-72 layout that plays with a championship yardage of 7,274 yards. It is carved into nearly 300 acres of land just seven miles south of the LSU campus on Nicholson Drive.

It also boasts one of the nation's finest practice facilities in The LSU Golf House, which opened to rave reviews in the fall of 2002. The Golf House includes a lavish meeting room, office space for the coaching staff and an area devoted to equipment repair and storage. It also includes an indoor driving range and a learning center where each player can utilize video analysis to benefit his development in a classroom setting.

The course was built on land donated to the Tiger Athletic Foundation and subsequently leased to The University Club. The original vision that drove University Club's development was having a premier course that would

provide a place for TAF members to play, as well as a home for the men's and women's golf teams at LSU.

The course opened for members on Oct. 22, 1998. The swimming and tennis facility adjacent to the course opened in the summer of 2000. The surrounding housing development continues to grow as homes continue to spring up, adding to the beauty of the area surrounding the golf course.

The Tiger Athletic Foundation is a private, non-profit corporation that serves as the fund-raising and development arm of the LSU athletics department. Each year, the TAF underwrites scholarship and academics awards, as well as capital development projects for LSU athletics.







# LSU Golf HOUSE

The LSU Golf House opened in the fall of 2002 to rave reviews from players, coaches and members of the athletic administration alike. This \$850,000 facility funded by the Tiger Athletic Foundation functions primarily as a golf-learning center for the LSU men's and women's teams where student-athletes are able to improve their skills at one of the premier practice facilities in the nation.

The Golf House features a lavish meeting room, office space for both the men's and women's coaching staffs and an area devoted to equipment repair and storage. It also includes locker rooms, an indoor driving range with two



hitting bays and a state-of-the-art learning center which can utilize video analysis to benefit each player's development in a classroom setting.

Outside the facility is a practice tee box that measures 100 yards in length, a brand new wedge game area built in 2007 and a 10,000 square-foot putting and pitching green surrounded by practice bunkers where players are able to practice in a spacious environment.

Chuck Winstead, who is the head coach of the men's golf team and a Top 100 Teacher according to Golf Magazine, believes that having such a facility is essential in the development of his players and is evidence that LSU is committed to running a first-class program.

"The facility offers our student-athletes an environment second to none to excel and reach their potential," Winstead said. "The combination of state-of-the-art technology to work on their game combined with our indoor putting area to fine-tune their stroke enables our players to maximize their ability. We are able to utilize the tools we have to get the best out of each player and teach them in a comfortable setting."

LSU women's head coach Karen Bahnsen echoed Winstead's sentiments, saying that she enjoys having the opportunity to utilize the facility's many features to teach her players in a productive atmosphere.

"There's no question that the LSU Golf House offers our student-athletes state-of-the-art instructional technology to take their game to another level," Bahnsen said. "Our two indoor hitting bays, club repair room with a lie and loft machine and video center allows each coach to teach the players in the most effective way possible. We also have a large meeting room that allows us to meet as a team and discuss course strategy and work with our team on all mental aspects of the game."



An inside view of the luxurious meeting and conference room.

# Practice FACILITIES

## Conference Room

The lavish conference room at the LSU Golf House enables the LSU coaching staff and players to meet in a quiet, spacious area.



## Locker Room

The new Tiger locker room includes space for all the players to dress and store their equipment.



## Video Analysis

LSU head coach Chuck Winstead teaches his players using state-of-the-art video technology that is second to none.



# Exterior & FACILITIES

INTRO

THIS IS LSU

PREVIEW

TIGERS

REVIEW

HISTORY



### Hitting Bay

The LSU Golf House at the University Club features an indoor driving range with two hitting bays that give the Tigers an opportunity to practice in a climate-controlled environment.



### Tee Box

Members of the LSU men's and women's golf teams have the opportunity to practice in a spacious environment as The LSU Golf House features a large tee box measuring 100 yards in length.



### Wedge Game

The practice facilities at The LSU Golf House feature a brand new wedge game area with three target greens, each measuring 2,000 square feet. Players can fine-tune their wedge game by hitting shots from all lies and angles up to 120 yards as the greens are guarded by rough and five bunkers. The project, designed by LSU alumni David Toms, Jim Lipe and Chuck Winstead, was completed in the summer of 2007.



### Putting Green

In addition to building a new wedge game area, recent renovations to the practice facilities at The LSU Golf House saw the completion of a brand new putting green measuring 10,000 square feet along with an existing putting green measuring 14,000 square feet that has been overseeded with bent grass. In all, the improvements to the practice facilities at The LSU Golf House are estimated at \$150,000.



### **Bo Campbell Auditorium**

The 1,000-seat auditorium is used through the year as a classroom and lecture hall. Each seat in the auditorium has space for a laptop and a modem hookup, providing each student unlimited learning opportunities. The auditorium also contains a movie theatre size screen to aid professors with lectures and classroom activities.

## **COX COMMUNICATIONS**

# **Academic Center FOR STUDENT-ATHLETES**

### **Study Area**

Included in the 54,000 square feet of the Academic Center are individual study areas as well as 14 private computer rooms for student-athletes to work one-on-one with tutors or by themselves.



## The Library

The library provides a perfect setting for individual study, or with a tutor as a group.

## Computer Stations

Throughout the Academic Center are 75 computer stations, providing student-athletes with a quiet working environment for research, writing and studying.



A \$15 million renovation to the Gym Armory in 2002 not only made it among the nation's premier academic centers, but put it at the forefront. Improvements to the existing center give LSU student-athletes the best opportunity for success by providing access to the latest technology, as well as an array of expanded services.

## Amenities

- ▶ 54,000 square feet of working space
- ▶ 300 computer workstations
- ▶ 14 private computer rooms in a state-of-the-art computer lab
- ▶ Additional study rooms and classrooms for private or group study
- ▶ Electronic scheduling of tutoring sessions
- ▶ A 1,000-seat auditorium for classes and lectures



# Athletic TRAINING

## Hydrotherapy Treatment

An integral part of rehabbing and developing LSU student-athletes is the operations center's hot/cold jacuzzis and an underwater treadmill in a fully equipped Hydrotherapy room. The Broussard training center (above) boasts the largest hydrotherapy pool in both collegiate and professional sports.

LSU boasts the largest and most complete athletic training facilities in all of collegiate athletics with both the Operations Center and the Broussard Center for Athletic Training in Tiger Stadium. Both are furnished with the latest in technology and equipment. The Operations Center training room features a full view of the practice fields, two hot/cold jacuzzis and an underwater treadmill. The Broussard Center includes an on-site x-ray room, an in-house pharmacy, as well as the largest hydrotherapy pool in both collegiate and professional sports. It is also one of the few collegiate training centers with a full-service pharmacy and a full-service vision center.



## Broussard Athletic Training Center



The two story, 22,000 square foot facility contains 20 treatment tables with the newest forms of modalities available, 14 taping stations, a 1,600 square foot rehabilitation area which contains the latest rehabilitation equipment including the Cybex Norm, Woodway treadmills and Body Master select rise equipment. LSU's multi-million dollar athletic training facility is named in honor of Dr. Martin J. Broussard (left), the legendary trainer whose career spanned over 40 years at LSU.





The Operations Center houses one of the most complete strength training facilities in the nation. Completed in 2006, the weight room area includes 16 multi-purpose platform, bench, incline, squat and Olympic lifting stations, along with 12 dumbbell bench stations.

# Strength & CONDITIONING

## Operations Center WEIGHT ROOM



### Custom Weights

Custom iron-grip dumbbells, weights and equipment made by Body Masters and Eleiko. Watch and listen to state-of-the-art video and sound system.



# LSU ATHLETICS Championship TRADITION

2007-2008 ATHLETICS YEAR IN REVIEW

## The Nation's Elite Teams



### Football

The Tigers celebrated the 10th SEC Championship in school history and capped an amazing season with the program's third national title and second since 2003. LSU posted a 12-2 overall record and a 6-2 mark in SEC play. The Tigers tallied their fourth BCS bowl victory as LSU defeated Ohio State, 38-24, in the 2008 BCS National Championship Game.

### Women's Basketball

The Lady Tigers reached their fifth-straight NCAA Final Four with a 31-5 overall record after wins over Jackson State, Marist, Oklahoma State and North Carolina in the NCAA Tournament. LSU claimed the SEC regular season title with an unblemished 14-0 mark, representing the second time in the last four seasons the Lady Tigers ran through the conference schedule unbeaten.

### Track and Field

The LSU women's track and field team claimed the 14th NCAA Outdoor Track and Field Championship in school history, and the Lady Tigers were NCAA runners-up during the indoor season. The LSU men's track and field team placed second at the NCAA Outdoor Championships. The Lady Tigers swept both the SEC Indoor and Outdoor titles, while the men's team captured league runner-up honors during both seasons.

### Baseball

The baseball team completed one of the most remarkable turnarounds in SEC history as the Tigers reached the College World Series for the 14th time. The Tigers, who once held a 6-11-1 record in SEC play, won the SEC Western Division, the SEC Tournament, the NCAA Baton Rouge Regional and the NCAA Baton Rouge Super Regional. The turnaround was sparked by an SEC-record 23 consecutive wins down the stretch.

### Gymnastics

The gymnastics team advanced to the NCAA Super Six for the first time in program history after the Tigers won the NCAA Central Regional. LSU finished fifth at the NCAA Championships. The fifth-place ranking marked the highest finish for a Tiger gymnastics team since 1988, which was prior to the establishment of the NCAA Super Six. LSU now has 24-consecutive postseason appearances.

## How The West Was Won

LSU became the first school to claim the SEC Western Division title in all three fall sports -- football, volleyball and soccer -- and the Tigers added another divisional championship in the spring with baseball. The volleyball team won its third-straight Western Division title with a 25-8 overall record, and the soccer team finished with a 12-5-7 overall mark to win the program's first division crown.



## Elite Athletes

### Kelly Baptiste

#### WOMEN'S TRACK & FIELD

Kelly Baptiste led the Lady Tigers to their 25th NCAA Championship by scoring a team-high 19 points at the outdoor nationals. She became the fifth Lady Tiger to be crowned NCAA champion in the 100-meter dash, while she also added All-America honors in the 200 meters, 4x100 relay and 4x400 relay.

### Blake Dean

#### BASEBALL

Blake Dean will go down in LSU lore as one of the greatest hitters in postseason history, batting .404 in the Tigers' postseason run to the College World Series. The sophomore was a first-team All-American by Baseball America, and he provided game-winning hits in four postseason contests, including a memorable walk-off, three-run double to lead LSU past Rice in the CWS.

### Kevin Dessauer

#### MEN'S TENNIS

Kevin Dessauer led the Tigers to their 14th-straight NCAA Tournament appearance as the 2008 team captain. On the courts, Dessauer finished second on the team with 21 singles victories. Off the courts, he ended his undergraduate career with a perfect 4.0 grade point average and was the recipient of the Southeast Regional ITA/Arthur Ashe Award for Leadership and Sportsmanship.

### Glenn Dorsey

#### FOOTBALL

Glenn Dorsey became the most decorated defensive player in school history and led the Tigers to their third national championship. Dorsey, the fifth pick of the 2008 NFL Draft by the Kansas City Chiefs, was a consensus first-team All-American. The senior was the recipient of the Outland, Nagurski, Lombardi and Lott Awards as college football's top defensive player.



### Megan Falcon

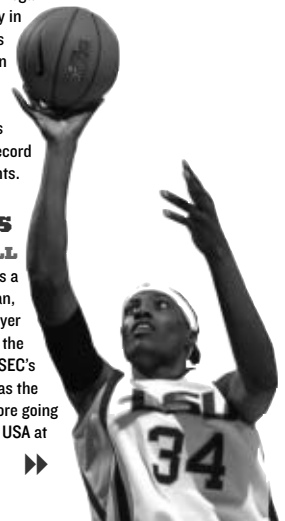
#### WOMEN'S TENNIS

A two-time singles All-American, Megan Falcon continued her brilliant play in 2008, earning All-America honors and first-team All-SEC recognition in her junior campaign. Falcon received a top 20 singles ranking for the second-straight season as she finished with a 27-7 overall record with 12 wins over ranked opponents.

### Sylvia Fowles

#### WOMEN'S BASKETBALL

Sylvia Fowles closed her career as a unanimous first-team All-American, the WBCA National Defensive Player of the Year and the SEC Player of the Year. The 6-6 senior became the SEC's all-time leading rebounder and was the No. 2 pick in the WNBA Draft before going on to win a gold medal with Team USA at the 2008 Olympics Games.





## The Most Successful LSU Athletics Season In School History



LSU capped the most successful athletics season -- from top to bottom -- in school history by recording an eighth-place finish in the U.S. Sports Academy Director's Cup. The eighth-place finish is the highest for LSU since the inception of the director's cup in 1993-94. The Tigers accumulated an all-time high 1,085 points in 17 of a possible 20 sports, a first in school history. In all, the Tigers sent 19 of their 20 teams to NCAA post-season play in 2007-08. Eight teams finished in the top five nationally of their respective sports.



### Susan Jackson ▲

#### GYMNASTICS

Susan Jackson became the fourth LSU gymnast to win an NCAA individual title in school history as she was the 2008 NCAA Champion on the vault with a score of 9.8563 at the individual event finals at the NCAA Championships. The sophomore also earned All-America honors on the beam, floor, vault and all-around.

### Andrew Loupe

#### MEN'S GOLF

Andrew Loupe was one of three LSU golfers to earn SEC All-Freshman honors in 2007-08. Loupe led the squad with a scoring average of 74.06 in 11 appearances, and his two top-10 finishes tied for a team-best mark.

### Christoph Lubenau

#### MEN'S SWIMMING & DIVING

Christoph Lubenau shattered the school record in the 100-yard butterfly at the NCAA Championships (46.24) while earning NCAA All-America honors with a ninth-place finish. Lubenau added another All-America finish as part of the Tigers' school record-setting 200 freestyle relay.

### Michelle Makasini

#### SOCCER

Michelle Makasini was chosen as a Top Drawer Soccer Honorable Mention All-American and became the second LSU soccer player in school history to earn first-team All-SEC honors as she helped lead the Lady Tigers to their first NCAA Tournament berth and an SEC Western Division title.

### Elena Martinez

#### VOLLEYBALL

The 2007 SEC Defensive Player of the Year, the senior libero also earned honorable mention AVCA All-America honors and was a second-team All-SEC selection. Martinez led the conference in digs and digs per game, breaking the 21-year-old SEC record for digs in a season as LSU won its third-straight SEC West title and earned a third-straight NCAA Tournament berth.

### Rachel Mitchell

#### SOFTBALL

A second-team NFCA All-South Region selection, the junior outfielder also earned first-team All-SEC honors. Mitchell ranked in the top 10 in the SEC in 10 offensive categories and was in the top 100 in the NCAA in five.

### Anthony Randolph

#### MEN'S BASKETBALL

Anthony Randolph, after a stellar freshman season, became the 13th LSU player drafted in the first round of the NBA Draft when he was chosen with the 14th pick by the Golden State Warriors, the final pick of the NBA lottery teams.

### Alexis Rather

#### WOMEN'S GOLF

Alexis Rather chipped in from off the green on the first playoff hole to give the Lady Tigers the eighth and final spot in the NCAA Division I Women's Golf Championships. LSU would go on to finish 15th, and after the season the senior would be named an assistant coach with the Ole Miss Rebels.



### Richard Thompson ▲

#### MEN'S TRACK & FIELD

Richard Thompson proved to be the nation's most dominant sprinter in 2008 as he was named the NCAA Men's Outdoor Track Athlete of the Year. He became the first LSU athlete in program history to sweep NCAA titles in the 60-meter dash and 100-meter dash in the same season, but he did not stop there as he went on to win silver medals in the 100 meters and 4x100-meter relay for his native Trinidad & Tobago at the 2008 Olympic Games in Beijing.

### Rachel Ware

#### WOMEN'S SWIMMING & DIVING

Rachel Ware, the 2007-08 SEC Diver of the Year, recorded her third career NCAA All-America accolade when she finished 12th in the 1-meter springboard at the NCAA Championships.

### 2007-08 Director's Cup Standings

1. Stanford
2. UCLA
3. Michigan
4. Arizona State
5. Texas
6. Florida
7. California
8. LSU
9. Penn State
10. Georgia



### 45 National Team Championships

Men's Basketball (1)	1935
Boxing (1)	1949
Football (3)	1958, 2003, 2007
Men's Golf (4)	1940, 1942, 1947, 1955
Men's Indoor Track (2)	2001, 2004
Women's Indoor Track (11)	1987, 1989, 1991, 1993, 1994, 1995, 1996, 1997, 2002, 2003, 2004
Men's Outdoor Track (4)	1933, 1989, 1990, 2002
Women's Outdoor Track (14)	1987, 1988, 1989, 1990, 1991, 1992, 1993, 1994, 1995, 1996, 1997, 2000, 2003, 2008
Baseball (5)	1991, 1993, 1996, 1997, 2000

### 113 SEC Team Championships

Baseball (13)	1939, 1943, 1946, 1961, 1975, 1986, 1990, 1991, 1992, 1993, 1996, 1997, 2003
Men's Basketball (9)	1935, 1953, 1954, 1979, 1981, 1985, 1991, 2000, 2006
Women's Basketball (3)	2005, 2006, 2008
Football (10)	1935, 1936, 1958, 1961, 1970, 1986, 1988, 2001, 2003, 2007
Men's Golf (15)	1937, 1938, 1939, 1940, 1942, 1946, 1947, 1948, 1953, 1954, 1960, 1966, 1967, 1986, 1987
Women's Golf (1)	1992
Gymnastics (1)	1981
Men's Swimming & Diving (1)	1988
Men's Tennis (4)	1976, 1985, 1998, 1999
Men's Indoor Track (4)	1957, 1963, 1989, 1990
Women's Indoor Track (11)	1985, 1987, 1988, 1989, 1991, 1993, 1995, 1996, 1998, 1999, 2008
Men's Outdoor Track (22)	1933, 1934, 1935, 1936, 1938, 1939, 1940, 1941, 1942, 1943, 1946, 1947, 1948, 1951, 1957, 1958, 1959, 1960, 1963, 1988, 1989, 1990
Women's Outdoor Track (10)	1985, 1987, 1988, 1989, 1990, 1991, 1993, 1996, 2007, 2008
Softball (5)	1999, 2000, 2001, 2002, 2004
Volleyball (4)	1986, 1989, 1990, 1991

### Overall NCAA Championships \*

1. UCLA	103
2. Stanford	95
3. USC	86
4. Abilene Christian	54
5. Kenyon	53
6. Oklahoma State	48
7. LSU	41
7. Arkansas	41
9. Texas	39
10. College of New Jersey	37

### Overall Women's NCAA Championships

1. Stanford	37
2. UCLA	32
3. College of New Jersey	31
4. LSU	25
4. Kenyon	25

\* - The NCAA does not recognize champions from the Division I Football Bowl Subdivision

# LSU GREATS

The five individuals on this page are the only men to have their jerseys retired by LSU. Basketball has retired the No. 23 for Pete Maravich, No. 50 for Bob Pettit, Jr., and No. 33 for Shaquille O'Neal. Football's only retired jersey is the No. 20 worn by Billy Cannon, while baseball retired the No. 15 in honor of longtime coach and athletics director emeritus Skip Bertman.



## 50

### Bob Pettit

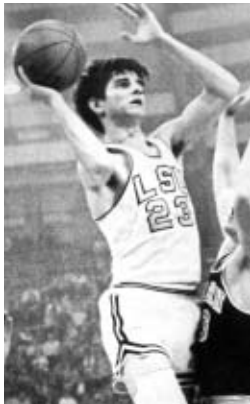
Pettit led LSU to its first NCAA Final Four in 1953 and he later became the first player in NBA history to exceed the 20,000-plus point barrier. Pettit is a member of the NBA Hall of Fame, and in 1997, he was named as one of the top 50 players in NBA history.



## 20

### Billy Cannon

One of the true legends of college football in the South, Cannon was the 1959 Heisman Trophy winner and helped the Tigers to the 1958 national title. Cannon's most memorable performance came in 1959 against Ole Miss when No. 1 LSU trailed No. 3 Ole Miss 3-0 in the fourth quarter. He fielded a punt, broke seven tackles and returned it 89 yards for the 7-3 victory. He went on to a successful 11-year professional career.



## 23

### Pete Maravich

"Pistol Pete" Maravich still holds the NCAA record for career points with 3,667 and for career scoring average with 44.2 points a game. He was selected the National Player of the Year in 1970 after leading the Tigers to the NIT Final Four. He scored 50-plus points an amazing 28 times. He went on to a 10-year professional career and was selected as one of the NBA's 50 greatest players in 1997.



## 33

### Shaquille O'Neal

O'Neal was the first pick in the 1992 NBA Draft. He was named MVP of the league in 2000 and was a three-time NBA Finals MVP after leading the Los Angeles Lakers to three World Championships. At LSU, O'Neal averaged 21.6 points and 13.6 rebounds for his career, and in 1991, he was named the World's Amateur Athlete of the Year as well as SEC Athlete of the Year and National Player of the Year. In 1997, he was named as one of the top 50 players in NBA history.



## 15

### Skip Bertman

A legend in the college baseball ranks, Bertman created a dynasty at LSU, guiding the Tigers to five national titles in a 10-year stretch from 1991-2000. He also coached the United States to a bronze medal at the 1996 Olympics in Atlanta and was an assistant on the gold medal-winning U.S. squad in Seoul, South Korea, in 1988. Bertman retired from coaching following the 2001 season and is the LSU athletics director emeritus. Bertman was inducted into the College Baseball Hall of Fame in 2006.

## LSU's success in each of its 20 sports is evident with this outstanding list of former Tigers.



### Seimone Augustus

Augustus was the two-time NCAA National Player of the Year, receiving the Wade Trophy, the Naismith and the Wooden Awards as a junior and a senior. Augustus helped lead the Lady Tigers to three-straight Final Fours. She was the No. 1 pick in the 2006 WNBA Draft, and she is a 2008 Olympic gold medalist.



### Sylvia Fowles

A three-time All-American, Fowles was a member of Final Four teams all four years of her career. She was the 2008 SEC Player of the Year and the league's all-time leading rebounder. Fowles was the second pick of the 2008 WNBA Draft and a 2008 Olympic gold medalist.



### April Burkholder

The 2006 NCAA beam co-national champion, Burkholder finished her career with 14 All-America honors and four All-SEC selections. In addition, she was named the NCAA Central Region Gymnast of the Year twice, the SEC Gymnast of the Year on two occasions, and she was also the conference's Freshman of the Year in 2003.



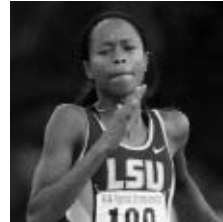
### Esther Jones

A 21-time All-American while at LSU, Jones won a gold medal as a member of the United States' 4x100-meter relay team at the 1992 Olympic Games in Barcelona.



### Xavier Carter

Carter won a school record-tying seven NCAA titles on the track and earned a total of 10 All-America honors. He became just the second athlete to win four titles at one national meet, joining Jesse Owens. He holds three individual school records and anchored LSU's 4x400-meter relay teams to two school records.



### Muna Lee

The most decorated track and field athlete in school history, Lee won 20 All-America awards and a school record seven national titles while helping the Lady Tigers to five NCAA team championships. A two-time Olympian, Lee is the 2008 U.S. Outdoor Champion in the 100-meter dash.



### Glen Davis

A 2006 first-team All-American and SEC Player of the Year, Davis helped lead LSU to its first Final Four appearance since 1986. In 2007, Davis was selected by Seattle in the NBA Draft before being traded to Boston. He was a vital member of the Celtics world championship team in his first professional season.



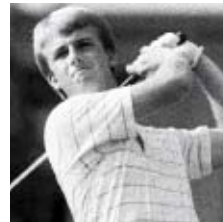
### Ben McDonald

McDonald was named the Golden Spikes National Player of the Year in 1989, and he was later the first player chosen in the Major League Baseball Draft by the Baltimore Orioles. In 2008, he was inducted into the College Baseball Hall of Fame.



### Walter Davis

A two-time Olympian and World Champion, Davis helped LSU to national titles in 2001 and 2002. The SEC Male Athlete of the Year in 2002, he won six NCAA titles and earned a school-record nine All-America honors.



### David Toms

The two-time SEC Player of the Year, Toms has gone on to a successful career on the PGA Tour. Among his 12 PGA Tour victories was a thrilling win at the PGA Championship in August of 2001.



### Meredith Duncan

The nation's top collegiate golfer in 2002, Duncan left LSU as the school's best female golfer. She earned first-team All-America honors as a senior in 2002 and won the United States Women's Amateur Championship in 2001.



### Todd Walker

Walker capped his LSU career as the SEC's all-time leader in hits, runs, RBIs and total bases. Walker, who is a member of the All-Time College World Series Team, led LSU to the national title in 1993. Walker went on to a successful Major League career for 11 seasons.



## Shaquille O'Neal

Four-time NBA champion, including the 2006 title with Miami, Shaquille O'Neal, the 2000 NBA MVP, joined the long list of prominent LSU alumni when he earned his degree in general studies in December 2000.



## Seimone Augustus

Augustus received her degree in 2005 after just three years at LSU and while earning NCAA Women's Basketball National Player of the Year honors twice. She was the first pick of the 2006 WNBA Draft by the Minnesota Lynx and a 2008 Olympic gold medalist.



# Prominent LSU ALUMNI



### Eduardo Aguirre, Jr.

Named the first Director of U.S. Citizenship and Immigration Services (USCIS) for the Department of Homeland Security in 2003, Aguirre, Jr., was appointed the U.S. Ambassador to Spain in 2005.



### Dr. James Andrews

A world-renowned orthopedic surgeon, Andrews is a 1963 graduate of LSU and a 1967 graduate of LSU Medical School. While at LSU, Andrews won the SEC indoor and outdoor titles in the pole vault as a member of the track team.



### Lod Cook

Cook graduated from LSU with a bachelor's degree in mathematics in 1955 and then earned his Master's degree in petro engineering in 1955. Cook served as CEO of ARCO for nine years.



### Kevin Faulk

Excelled in both the classroom and on the playing field as he graduated in just three years. Faulk is currently a member of the three-time Super Bowl champion New England Patriots.



### Carlos Roberto Flores

The president of Honduras from 1997-2001, Flores helped the nation recover after Hurricane Mitch devastated the country in 1998. Flores is married to the former Mary Carol Flake, also an alumnae of LSU.



### Jim Flores

Flores graduated with two bachelor's of science degrees; one in corporate finance in 1981 and the second in petroleum land management in 1982. Flores is currently Chairman, President and CEO of Plains Exploration & Production Company.

**LSU's enrollment is more than 25,000 students, including more than 1,600 international students and nearly 5,000 graduate students.**

INTRO

THIS IS LSU

PREVIEW

TIGERS

REVIEW

HISTORY

**Dr. Larry O. Arthur** - AIDS researcher.

**John Ed Bradley** - Sports Illustrated writer and novelist.

**John Breaux** - U.S. Senator (1987-2005) and U.S. Congressman (1972-86) from Louisiana.

**Wil Calhoun** - Executive Producer of television sitcom "Friends."

**Cassandra Chandler** - One of the Federal Bureau of Investigation's highest ranking African-American women as special agent in charge of the Norfolk Field office.

**"Lightning Joe" Lawton Collins** - Chief of Staff for President Harry Truman.

**Bill Conti** - Oscar-winning composer who has written theme music for several well-known movies, including "Rocky" and its sequels.

**Eric Arturo Delvalle** - President of Panama (1985-1988).

**A. Wright Elliott** - Retired executive vice president, Chase Manhattan Bank.

**Graves Erskine** - U.S. Marine Corps General in WWII.

**Maxime A. Faget** - Designed Mercury and Gemini spacecrafts.

**Mary Carol Flake Flores** - Former first lady of Honduras.

**Murphy "Mike" Foster, Jr.** - Former governor of Louisiana (1996-2004).

**Kevin Griffin** - Lead singer of the platinum-selling rock band "Better than Ezra."

**Paul Groves** - Award-winning tenor with the Metropolitan Opera.

**Rufus William (Bill) Harp** - Television set decorator for series including "L.A. Law" and "Moonlighting."

**Pat Hewlett** - CIO of Exxon Mobil.

**Walter Hitesman** - Former president, Reader's Digest.

**Hubert Humphrey** - U.S. vice president (1965-69).

**W. Vernon Jones** - Senior Scientist for Suborbital Research, NASA headquarters.

**Delos "Kip" Knight** - Vice president of marketing and brand management for eBay international.

**Russell Long** - U.S. Senator from Louisiana (1948-87).

**Ray Marshall** - Secretary of Labor under President Jimmy Carter.

**James E. Maurin** - Founding partner and CEO of Stirling Properties, a national real estate services firm.

**Grover Murray** - Former president of Texas Tech University.

**Jake Lee Netterville** - Chairman of the board of Postlethwaite and Netterville, the largest Louisiana-based public accounting firm.

**Edwin Newman** - Longtime NBC News journalist and author.

**Carolyn Bennett Patterson** - Former senior editor, National Geographic.

**J. Howard Rambin** - Former CEO and Chairman of the Board, Texaco.

**Rex Reed** - Drama critic, syndicated columnist.



**Kenneth Brown**

A 1995 graduate of LSU and the host of Home and Garden Television's (HGTV) show "redesign," Brown credits much of his success to LSU's interior design program, which is ranked among the top 10 nationally. Brown's show completed its first season in 2005.

**Maj. Gen. Thomas Rhame** - Led 1st Infantry Division against Iraq during Persian Gulf War.

**Thomas O. Ryder** - Chairman of the Board, The Reader's Digest Association.

**Frances Seghers** - Senior VP of Sony Entertainment European Community Affairs, which includes Sony Music, Sony Pictures and Sony Playstation.

**Dolores Spikes** - Former President of the Southern University System and the University of Maryland-Eastern Shore.

**Ray Strother** - Author, political consultant.

**David Suarez** - Co-owner of Atlantic Company of America, Inc., which performed the historic restoration of the Washington Monument, the Smithsonian's Air and Space Museum and the main U.S. Treasury Building.

**Rebecca Wells** - Author of the novel and film "Devine Secrets of the Ya-Ya Sisterhood."

**Joanne Woodward** - Academy Award-winning actress and wife of Paul Newman.



**Reinosuke Hara**

Hara researched at LSU in the 1950s and then later received an honorary doctorate of science degree from LSU in 1992. He is the former President and CEO of Seiko Instruments.



**Mary L. Landrieu**

Landrieu became the first woman from Louisiana elected to a full term in the United States Senate in 1997.



**Harry J. Longwell**

Longwell graduated from LSU in 1963 with a bachelor's degree in petroleum engineering and retired in 2004 as the Executive Vice President and Director of ExxonMobil.



**Eddie J. Jones**

The former president of the NFL's Miami Dolphins franchise, the 37-year veteran of the NFL is currently a Trustee of the Bert Bell/Pete Rozelle Retirement and Disability Plan.



**Marty Sixkiller**

Senior Technical Director for PDI/DreamWorks' movies "Antz," "Shrek," "Shrek 2," "Shrek the Third," "Madagascar" and "Over the Hedge."



**James Carville**

Carville received both a bachelor's degree and law degree from LSU and gained fame in the 1990s as the chief campaign strategist for Bill Clinton and Al Gore. Carville also penned a best-selling memoir titled "All's Fair: Love, War and Running for President."



The state capitol building of Louisiana, located in the heart of downtown Baton Rouge, is the tallest capitol building in the nation at 34 stories and overlooks the Mississippi River.

# Baton ROUGE

**Distance Chart from Baton Rouge** (BASED ON 70 MPH SPEED):

Atlanta, Ga. ....7 hours	Jackson, Miss. ....2 <sup>1</sup> / <sub>2</sub> hours	New Orleans, La. ....1 hour
Biloxi, Miss. ....2 hours	Jacksonville, Fla. ....8 <sup>1</sup> / <sub>2</sub> hours	Orlando, Fla. ....10 hours
Birmingham, Ala. ....6 hours	Little Rock, Ark. ....5 hours	Pensacola, Fla. ....4 hours
Dallas, Texas ....6 <sup>1</sup> / <sub>2</sub> hours	Mobile, Ala. ....3 hours	Shreveport, La. ....4 hours
Houston, Texas ....4 hours	Monroe, La. ....2 <sup>1</sup> / <sub>2</sub> hours	

Hospitality and comfort are a Southern tradition practiced to perfection around Baton Rouge. Minutes from the city, ancient moss-draped oaks, fragrant honeysuckle, formal gardens and the finest examples of Southern architecture await. Combine this with the excitement of the mighty Mississippi River, Cajun music and a gourmet meal that is topped with freshly brewed cafe-au-lait at one of Baton Rouge's fine restaurants. So what does the future hold? Baton Rouge is now one of the fastest growing cities in the South -- a bustling Metropolis of cutting edge technology companies, high-powered law firms and forward thinking city leaders who passionately support the arts and promote the local economy. Old Man River just got an upgrade. Yes, this is one city that's rolling on the river.

**Proximity**

Baton Rouge is just an hour away from the French Quarter in New Orleans and even closer to the million-acre Atchafalaya Swamp, which is called one of the biggest fishing ponds in the country.







The Pelican State features the hustle and bustle of downtown New Orleans. Contrast that with the finest hunting, fishing and boating opportunities in the country making Louisiana the "Sportsman's Paradise."



# Louisiana

## THE PELICAN STATE



Louisiana, one of America's most culturally and geographically diverse states, is located in the heart of the Deep South. Adjacent to the Gulf of Mexico and dotted with hundreds of lakes and bayous, Louisiana is home to all types of terrain from swamps and marshes to lush forests and gentle hills.

### ◀ Unique Culture

Louisiana is home to Mardi Gras, a two-week party that includes more than 60 parades and millions of visitors from around the world. All year long New Orleans Jazz, Creole culture, stately riverboats and some of the finest cuisine in the world is mixed into the diverse and renowned culture of Louisiana.

### Cuisine ▶

Foods like boiled crawfish, jambalaya, shrimp etouffee and gumbo make the cajun and creole cuisine of Louisiana the envy of the nation.





# Joe Alleva

LSU Director of Athletics



Joe Alleva officially became the Director of Athletics at LSU on July 1, 2008, after spending the last 10 years in the same position at prestigious Duke University. Under Alleva's direction, the Duke athletic department experienced unprecedented growth and success.

"Joe Alleva brings a wealth of experience and accomplishment to LSU," said President John Lombardi. "I'm confident we've found a new leader for LSU athletics who exemplifies the vision and integrity needed to lead our sports programs to new heights, a champion of student-athletes who believes in the highest standards of competition both on the field and in the classroom."

At LSU, Alleva is responsible for the administration and direction of the Tiger athletic program, which has a current annual budget of approximately \$70 million, includes 20 teams and more than 400 student-athletes.

At Duke, Alleva oversaw more than 190 staff members, a \$50 million budget, 26 sports and more than 600 student-athletes. Duke athletics flourished under Alleva's direction.

Alleva, 55, has built his professional career on service to student-athletes and the commitment to individual development in athletics, academics and community service. Alleva is well-respected for sustaining high standards of excellence and integrity in the athletics program, the quality of coaches he has hired, and the high level of success that was achieved across athletic programs at Duke under his leadership.

Alleva's tenure as AD at Duke propelled the university into the ranks of America's top all-around collegiate programs. The Blue Devils consistently finished high in the annual Director's Cup standings, ranking as high as fifth in 2005. Prior to 1998-99, Alleva's first full year as director of athletics, Duke had never placed higher than 21st in the Director's Cup standings. Since then, Duke has enjoyed seven top 20 finishes, including five in succession (2004-08).

In the 2006 National Collegiate Scouting Association Power Rankings that combine a school's Director's Cup finish, its athletic graduation rates and its academic ranking in U.S. News and World Report, Duke was the top-ranked Division I school in the nation. Duke also finished first in this listing in 2005 and second in 2004.

Alleva's outstanding list of accomplishments includes Duke winning more ACC and NCAA championships than in any other 10-year period in school history. Six Duke teams won national championships under Alleva's leadership and 46 Blue Devil teams recorded ACC championships, the second-highest total among ACC schools since 1997-98.

Under Alleva's commitment to education, Duke's graduation rates continued to rank among the best in the nation. Duke regularly led the ACC in Academic Honor Roll honorees as Alleva increased the financial commitment to academic support by ten-fold during his tenure as AD.

While continuing to excel in competition and in the classroom, Alleva instituted a number of innovative community service programs for Duke student-athletes to benefit the community. Duke student-athletes regularly volunteered nearly 3,000 hours in community outreach.

Fundraising under Alleva's guidance reached extensive heights during his career at Duke. Alleva and his fundraising team generated more than \$173 million in gifts and funded more than \$85 million in new facilities or renovations. Annual giving to the Iron Dukes increased 50 percent since the year 2000.

New facilities built under Alleva's supervision include the Michael W. Krzyzewski Center Dedicated to Athletic and Academic Excellence, Yoh Football Center, Sheffield Tennis Center, Schwartz-Butters Athletic Center, Ambler Tennis Stadium, Karcher-Ingram Golf Center, Rod Myers Teaching Center, the

Skandalaris Fieldhouse at Koskinen Stadium and the fieldhouse at Williams Field. Facility upgrades were made to Cameron Indoor Stadium, Wallace Wade Stadium, Jack Coombs Stadium, Koskinen Stadium, Williams Field, Murray Athletic Building, and Brooks Field at the football practice facility.

Alleva is active on the national collegiate athletics scene, having served on the Football Bowl Certification Committee. He sat on several Atlantic Coast Conference committees and served on the NCAA Division I Championships/Competition Cabinet.

Alleva majored in Finance at Lehigh University and received his bachelor's degree in 1975. While at Lehigh, Alleva was the quarterback of the football team and team captain in 1974. Alleva also played on the Lehigh baseball team. He served as a graduate assistant football coach and earned an MBA in 1976.

Alleva began his career at Duke working for the vice president of business and finance in 1976 and joined the Duke athletic department in 1980 as director of finance. He became the assistant director of athletics in 1986 and was soon promoted in 1987 to associate director, before his tenure as



Athletics Director Joe Alleva introduces new LSU men's basketball coach Trent Johnson during a press conference on April 10, 2008.

Director of Athletics in 1998.

He played a key role in Durham's community sports scene. He started Little League Baseball in Durham over 20 years ago, and also began the American Legion baseball program.

Alleva is a member of the North Carolina American Legion Hall of Fame, Suffern High School Hall of Fame and the Rockland County Hall of Fame.

Alleva and his wife, Annie, have two sons, J.D. and Jeff, along with a daughter, Jenny. J.D. played baseball at Duke and was picked in the 24th round of the 2001 Major League Baseball Amateur Draft by the Kansas City Royals and is now a professional scout for the Houston Astros. Jeff finished his baseball career at Duke in 2003 and signed a free agent contract with the Royals following his senior season. He recently graduated with his MBA from the prestigious Fuqua School of Business at Duke. Jenny, a four-year letterwinner on Duke's women's soccer team, attends law school at the University of North Carolina.



## Dr. John V. Lombardi

President, LSU System



Dr. John V. Lombardi is the fifth individual to serve as the President of the Louisiana State University System. As its Chief Executive Officer, Dr. Lombardi oversees 11 institutions, including five academic campuses, as well as 10 public hospitals located throughout the state. He is also a Professor of History at Louisiana State University and Agricultural and Mechanical College.

Dr. Lombardi was born in Los Angeles, Calif., and attended Pomona College, where he earned his bachelor's degree. He received his M.A. and Ph.D. degrees in history from Columbia University. He joined the faculty in the Department of History at Indiana University, where he later served as Dean of International Programs and Dean of the College of Arts and Sciences. In 1987, he became Provost and Vice President for Academic Affairs at the Johns Hopkins University. From 1990-1999, Dr. Lombardi was President of the University of Florida. Prior to his appointment as President of the LSU System, he served as Chancellor of the University of Massachusetts Amherst.

He is a Latin American historian, with a special interest in Venezuela. Dr. Lombardi is also one of the country's foremost authorities in higher education, serving as Co-Editor of *The Top American Research Universities*. He is the author of numerous professional publications, and along with his wife, Cathryn, co-authored a teaching atlas on Latin American History. He has taught courses in history, intercollegiate sports and university management.



Dr. John Lombardi addresses the LSU Board of Supervisors at his introductory Board meeting on July 13, 2007.



## Dr. Michael V. Martin

Chancellor, LSU



Dr. Michael V. Martin was approved as the eighth chancellor of LSU by the Board of Supervisors on June 5, 2008. Dr. Martin, formerly the president of New Mexico State University, had served at NMSU since 2004.

In his time at NMSU, he was praised for his reorganization of the university's athletic department and physical plant, as well as his fundraising prowess. A 1969 graduate of Mankato State College, Dr. Martin received a Ph.D. in applied economics from the University of Minnesota in 1977 and has since worked in both academic and administrative capacities at universities such as Minnesota, Oregon State University and the University of Florida.

An agricultural economist, Dr. Martin is considered an expert on land-grant universities.

Dr. Martin became president of New Mexico State University on July 1, 2004. An academic leader dedicated to the land-grant mission of teaching, research and extension service, he was awarded the 2008 Distinguished Leadership Award by Leadership New Mexico. Dr. Martin was recognized as a strong voice for education and the agriculture industry in New Mexico. The Leadership New Mexico Distinguished Leadership Award recognizes an individual who has used his/her leadership abilities to improve the quality of life for New Mexico citizens and future generations.

Dr. Martin was also named the recipient of the Justin Smith Morrill Memorial Award in 2007. This national award, named after the author of the bill creating land-grant universities, honors and recognizes outstanding service on behalf of the land-grant mission. Only six individuals have been designated to receive this award since it was first given in 1980.

Dr. Martin established the One University concept at NMSU and called for a five-year plan titled "Living the Vision" to take the university to "the next level." He laid the groundwork for university wide extension and created the J. Paul Taylor Social Justice Symposium.

During his tenure at NMSU, the first capital campaign was established with a goal of raising \$150 million by 2010. The campaign met its goal in the first half of the seven-year fundraising plan. Dr. Martin also oversaw the establishment of a system of research clusters that revolve around five areas in which NMSU scientists and researchers have expertise: 21st century aerospace, information sciences, bioscience, southwest border issues and natural resources.

Dr. Martin was a recognized leader in New Mexico, being named a powerbroker by the *New Mexico Business Weekly* in 2006. He continues to be active as a scholar and has written numerous book chapters and articles for academic journals, trade publications and the popular press. He has recently published pieces for *The Chronicle of Higher Education* and *University Business*. Named the Outstanding Alumnus of Minnesota State University

Mankato in 2006, Dr. Martin also received the NMSU Social Justice Award in 2005.

Before arriving at NMSU, he served for six years as vice president for agriculture and natural resources at the University of Florida, leading the university's Institute of Food and Agricultural Sciences with more than 3,000 employees statewide. He was elevated to senior vice president of the University of Florida shortly before being selected as NMSU's president.

Previously, he was vice president for agricultural policy and the dean of the College of Agricultural, Food and Environmental Sciences at the University of Minnesota. He began his academic career at Oregon State University as a faculty member in the Department of Agricultural and Resource Economics.

A native of Crosby, Minn., Dr. Martin completed a bachelor's degree in business and economics and a master's degree in economics at Mankato State College (Minnesota State University) in Minnesota. He received his Ph.D. in applied economics from the University of Minnesota in 1977. His areas of specialization are marketing, prices, international trade, public policy, transportation and business logistics.

Some of his philosophy is summed up in the following quote: "It is the tradition of land-grant universities to be non-traditional," written as part of a 2001 article titled "The Land-Grant University in the 21st Century," published in the *Journal of Agricultural and Applied Economics*. He traced the history of the land-grant movement from the mid-1800s and concluded that "the fundamental land-grant principles of accessibility, practical as well as classical education, research and discovery in the public interest, and connectedness to all the people remain powerful and profound."

He has been active in professional and community service organizations, including the Farm Foundation's Bennett Agricultural Round Table, the National Agricultural Biotechnology Council and the Florida Agricultural Resource Mobilization Foundation. He is a member of the American Economic Association, the American Agricultural Economics Association, the International Association of Agricultural Economics, the International Agricultural Trade Research Consortium, the Sigma XI Scientific Research Society and the Economic History Association.

Dr. Martin and his wife Jan have two children, both adopted from South Korea. Amanda, a graduate of the University of Wisconsin-Eau Claire, is a graphic artist in Saint Paul, Minn. Sam, with a bachelor's degree from the University of Minnesota and a master's from Sarah Lawrence College, is a genetics counselor at Beth Israel Hospital in New York City.

# Athletic Facilities

INTRO

THIS IS LSU

PREVIEW

TIGERS

REVIEW

HISTORY



## Tiger Stadium

Football

Built - 1924 • Capacity - 92,400

Largest Crowd - 92,910 vs. Florida on Oct. 6, 2007



## Alex Box Stadium

Baseball

Built - 1938 • Capacity - 7,760

Largest Crowd - 8,683 vs. Houston on March 6, 2004



## Tiger Park

Softball

Built - 1996 • Capacity - 1,000

Largest Crowd - 2,326 vs. Tennessee on April 28, 2007



## W.T. "Dub" Robinson Stadium

Men's and Women's Tennis

Built - 1970 • Capacity - 550



## Pete Maravich Assembly Center

Men's and Women's Basketball, Volleyball and Gymnastics

Built - 1971 • Capacity - 13,472

Largest Crowd - 15,694 (MBB vs. Ole Miss on Feb. 25, 1981)



## Bernie Moore Track Stadium

Men's and Women's Outdoor Track & Field

Built - 1969 • Capacity - 5,680

Largest Crowd - 3,947 on June 1, 2002 (NCAA Championships)



## Soccer Complex

Women's Soccer

Built - 1996 • Capacity - 1,500

Largest Crowd - 2,402 vs. Tennessee on Oct. 5, 2007



## Natatorium

Men's and Women's Swimming & Diving

Built - 1985 • Capacity - 2,200

INTRO

THIS IS LSU

PREVIEW

TIGERS

REVIEW

HISTORY

## University

<b>Location:</b>	Baton Rouge, La.
<b>Founded:</b>	1860
<b>Enrollment:</b>	25,896
<b>Nickname:</b>	Tigers or Fighting Tigers
<b>Home Course:</b>	The University Club (Par 72)
<b>Mascot:</b>	Mike VI (Live Bengal Tiger)
<b>Colors:</b>	Purple and Gold
<b>Conference:</b>	Southeastern
<b>Affiliation:</b>	NCAA Division I
<b>President:</b>	Dr. John V. Lombardi
<b>Chancellor:</b>	Dr. Michael V. Martin
<b>Faculty Representative:</b>	Dydia DeLyser

## Athletic Department

<b>Athletics Director:</b>	Joe Alleva
<b>Sr. Associate AD/Operations:</b>	Verge Ausberry
<b>Sr. Associate AD/Business:</b>	Mark Ewing
<b>Sr. Associate AD/Senior Women's Administrator:</b>	Judy Southard
<b>Sr. Associate AD/External Relations:</b>	Herb Vincent
<b>Associate AD/Internal Relations:</b>	Bo Bahnsen
<b>Associate AD/Operations:</b>	Eddie Nunez
<b>Associate AD/Compliance:</b>	Bo Kerin
<b>Associate AD/Student Services:</b>	Miriam Segar
<b>Assistant AD/Facility Services:</b>	Ronnie Haliburton
<b>Assistant AD/Ticket Manager:</b>	Brian Broussard

## Men's Golf Staff

<b>Head Coach:</b>	<b>Chuck Winstead</b> Alma Mater: LSU, 1991 Year at LSU: Fourth
<b>Assistant Coach:</b>	<b>Shane Warren</b> Alma Mater: Alabama, 1994 Year at LSU: Fourth

## Team Information

<b>2007-08 Record:</b>	91-80-4
<b>2007-08 SEC Finish:</b>	T8th
<b>Postseason:</b>	NCAA West Regional
<b>Letterwinners Returning/Lost:</b>	6/4
<b>Top Returnees:</b>	Jarrold Barsamian (Sr.), Bryant Lach (Jr.), Andrew Loupe (So.), John Peterson (So.), Clayton Rotz (So.)
<b>Top Newcomers:</b>	Austin Gutsell (Fr.), Josh Jones (Fr.), Sang Yi (Fr.)
<b>Inaugural Season:</b>	1932
<b>Tournament Titles:</b>	104
<b>NCAA Championships:</b>	4
<b>SEC Championships:</b>	15

## Sports Information

<b>Assistant AD/Sports Information Director:</b>	Michael Bonnette
<b>Senior Associate SID:</b>	Kent Lowe
<b>Associate SID:</b>	Caroline Domecq
<b>Associate SID:</b>	Bill Franques
<b>Associate SID:</b>	Bill Martin
<b>Associate SID:</b>	Will Stafford
<b>Graduate Assistant:</b>	Jake Terry
<b>Publications Director:</b>	Jason Feirman
<b>Graphic Design Coordinators:</b>	Krystal Bennett, Courtney Wilburn
<b>Publications Student Assistant:</b>	Kenli Langlois
<b>Photographer:</b>	Steve Franz
<b>Men's Golf Contact:</b>	Will Stafford
<b>Secretary:</b>	Pat Fredericks
<b>Student Assistants:</b>	Ashley Bourdier, Molly Clark, Jesse Delerno, R.J. Marse, Brianna Mickles, Elizabeth Stuart, Chad Vignes

## Contact Information (area code 225)

<b>Sports Information:</b>	578-8226
<b>Sports Information Fax:</b>	578-1861
<b>Will Stafford's Cell:</b>	436-4389
<b>Will Stafford's Email:</b>	wstaff2@lsu.edu
<b>Men's Golf Office:</b>	578-1280
<b>LSU Athletic Department:</b>	578-0628
<b>Ticket Office:</b>	578-2184
<b>Website:</b>	www.LSUsports.net

## Media Information

The 2008-09 LSU Men's Golf Media Guide was written to provide members of the media with statistics and information needed to adequately cover the LSU men's golf team. For further information on the team and the scheduling of interviews with head coach Chuck Winstead, assistant coach Shane Warren or any of the student-athletes, please contact Will Stafford in the LSU Sports Information Department at (225) 578-8226.

### MAILING ADDRESS

LSU Sports Information  
P.O. Box 25095  
Baton Rouge, LA 70894-5095

### OVERNIGHT MAILING ADDRESS

Athletic Administration Building, Fifth Floor  
North Stadium Drive  
Baton Rouge, LA 70894

## 2008-09 Men's Golf Schedule

### SEPTEMBER

12-14	Gopher Invitational	Wayzata, Minn.	Spring Hill GC
22-23	Shoal Creek Intercollegiate	Birmingham, Ala.	Shoal Creek CC

### OCTOBER

13-14	Squire Creek Invitational	Choudrant, La.	Squire Creek CC
27-29	Isleworth Collegiate Championship	Windermere, Fla.	Isleworth G&CC

### FEBRUARY

14-15	Gator Invitational	Gainesville, Fla.	Mark Bostick GC
22-23	John Hayt Invitational	Ponte Vedra Beach, Fla.	Sawgrass CC

### MARCH

20-22	Schenkel/E-Z-Go Invitational	Statesboro, Ga.	Forest Heights CC
29-31	Hootie at Bulls Bay Intercollegiate	Awendaw, S.C.	Bulls Bay GC

### APRIL

6-7	Bank of America Intercollegiate	Jackson, Miss.	Reunion G&CC
17-19	SEC Men's Golf Championships	St. Simons Island, Ga.	Frederica GC

### MAY

14-16	NCAA Regionals	TBA	TBA
27-30	NCAA Men's Golf Championships	Toledo, Ohio	Inverness GC

## Support Staff



**Will Stafford**  
Sports Information



**Jason Shaw**  
Academic Counselor



**Kristin Price**  
Learning Specialist



**Bo Lowery**  
Athletic Trainer



**Paul Jackson**  
Strength and  
Conditioning Coach

## Credits

**Editor:**  
Will Stafford

**Editorial Assistance:**  
Chad Vignes

**Design and Layout:**  
Kenli Langlois  
Jason Feirman

**Covers:**  
Kenli Langlois  
Jason Feirman

**Photography:**  
Steve Franz  
Andrew Fredrickson  
Bryan Wayne

**Printer:**  
EBSCO Media