



THIS IS LSU



It hasn't taken Fran Flory long to turn around the LSU volleyball program. She took over a team that had hit rock bottom in 1997 and has methodically turned it into a team that expects to win every time it steps on the court. From 0-15 in the SEC the season prior to her arrival to a 33-30 league mark over the last four years, Flory has made her impact felt on the court. With her ability to identify and develop talent, relate to her players and surround herself with top-notch assistant coaches, Fran Flory has made this a great time to be a part of LSU volleyball.

"LSU has everything a student-athlete could ask for, from the facilities to the administration. We expect to win championships and every LSU student-athlete has those expectations. Our teams are committed to winning both on the court and in the classroom.

"Team togetherness and team ownership are two very important factors in our program. Our teams are

committed not only to LSU, but also to each other. Team ownership is vital to the success of any team, company or organization. Everyone must have a clear understanding of the goals and direction of the program. We are very careful to define roles and responsibilities so everyone is headed in the same direction."

Flory came to LSU from the head coaching position at Kentucky, where she led the Wildcats to one NCAA Tournament appearance and was named the AVCA South District Coach of the Year in 1993. Prior to that, she served as an assistant at LSU where she helped the Tigers to three SEC Championships and two Final Four appearances.

Now, entering her eighth season, Flory will continue to build on the solid foundation that she has laid out for the LSU volleyball program and continue to design her program around the fundamentals that have made her a success at every stop of her coaching career.

Speaking of Coach Fran Flory

"Fran is one of the finest people I have ever met. I have had the pleasure of watching her become one of the finest coaches in our profession. It would be an honor to have my daughter play for her. She has great enthusiasm, is very easy to work with and has a true desire to be successful. She has my utmost admiration and support."

- Mick Haley,
Head coach at Southern California;
Head coach 2000 US Olympic Team

"Fran is one of the most remarkable people that I have had the pleasure of knowing. She has been a mentor and a friend throughout my playing and coaching career. She is one of those people who have the ability to make you feel that you have the strength and courage to accomplish anything and overcome any obstacle. "

- Julie Stempel Ibieta,
Former head coach at University of New Orleans,
LSU volleyball player (1988-91)

The Flory Mission

To win championships.

To help student-athletes develop to their full potential, both on the court and in the classroom.

To help each student-athlete earn their degree and prepare for the next step in their lives.

EDUCATION FIRST

A staple of the LSU program since Flory arrived in 1998 has been the tremendous academic success of her players. The Tigers have placed the second-most players on the SEC Academic Honor Roll in the last six years of any school in the league. In four of the past six seasons, LSU has led the conference.

"Balancing a successful career in the classroom and on the court is a difficult task," said Flory. "It requires a great deal of discipline and commitment. Our staff truly understands what it takes and shares in the commitment to insure the academic and athletic success of our student-athletes."

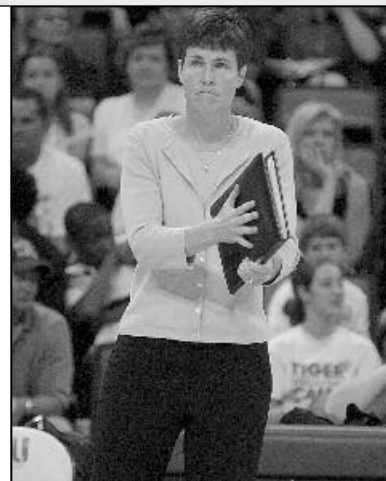
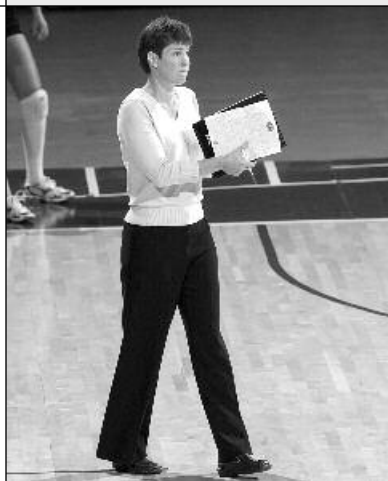
BUILDING FOR SUCCESS IN LIFE

When athletes sign to play for coach Flory, they sign on not only to maximize their potential as a volleyball player, but also to maximize their potential as a person.

"My goal for every student-athlete who competes on my team is to allow and to help them develop into a successful person in all aspects of life. When they graduate, I want them to truly feel prepared for the next step in their lives, whatever that may be. We are not just about developing successful volleyball players, our program is about developing successful people.

"Our philosophy is one that we all control our own destiny. Each day we make choices in all aspects of lives that will influence who and what we become. We strive to provide the freedom and correct environment to make the choices that will prepare our student-athletes for their future."

"My goal for every student-athlete who competes on my team is to allow and to help them develop into a successful person in all aspects of life."



INTRO

THIS IS LSU

PLAYERS

COACHES

OPPONENTS

REVIEW

HISTORY

RECORDS

MEDIA

The state capitol building of Louisiana, located in Baton Rouge, is the tallest capitol building in the nation at 34 stories.

Hospitality and comfort are a Southern tradition practiced to perfection around Baton Rouge. Minutes from the city, ancient moss-draped oaks, fragrant honeysuckle, formal gardens and the finest examples of Southern architecture await. Combine this with the excitement of the mighty Mississippi River, Cajun music and a gourmet meal that is topped with freshly brewed cafe-au-lait at one of Baton Rouge's fine restaurants. Mix in an LSU athletic event, and Baton Rouge becomes one of the most attractive cities for living, entertainment and education in the South.



Baton Rouge Facts

POPULATION:

Baton Rouge 227,818
Metro Baton Rouge 412,852

AVERAGE TEMPERATURES:

High 81.3
Low 52.5
Average 67.5

The average annual temperature in Baton Rouge is 68 degrees and the city features a semi-tropical climate highlighted by mild winter months.



Proximity

Baton Rouge is just an hour away from the French Quarter in New Orleans and even closer to the million-acre Atchafalaya Swamp, which is called one of the biggest fishing ponds in the country.



Mississippi River

Baton Rouge, the capital city of Louisiana, sits on the banks of the Mississippi River.

Distance Chart from Baton Rouge (BASED ON 70 MPH SPEED):

Atlanta, Ga.7 hours
Biloxi, Miss.2 hours
Birmingham, Ala.6 hours
Dallas, Texas6 1/2 hours
Houston, Texas4 hours

Jackson, Miss.2 1/2 hours
Jacksonville, Fla.8 1/2 hours
Little Rock, Ark.5 hours
Mobile, Ala.3 hours
Monroe, La.2 1/2 hours

New Orleans, La.1 hour
Orlando, Fla.10 hours
Pensacola, Fla.4 hours
San Antonio, Texas7 hours
Shreveport, La.4 hours

The St. Louis Cathedral in Jackson Square is located in the heart of the historic French Quarter area of New Orleans.



Unique Culture

Louisiana is home to Mardi Gras, a two-week party that includes more than 60 parades and millions of visitors from around the world. All year long New Orleans Jazz, Creole culture, stately riverboats and some of the finest cuisine in the world is mixed into the diverse and renowned culture of Louisiana.



Sportsman's Paradise

Louisiana offers some of the finest hunting, fishing and boating opportunities in the country.



Cuisine

Foods like boiled crawfish, jambalaya, shrimp etouffee, and gumbo make the cajun and creole cuisine of Louisiana the envy of the nation.



The East Brown Pelican is Louisiana's State Bird.

Louisiana, one of America's most culturally and geographically diverse states, is located in the heart of the Deep South. Adjacent to the Gulf of Mexico and dotted with hundreds of lakes and bayous, Louisiana is home to all types of terrain from swamps and marshes to lush forests and gentle hills. The state is known for its charm and friendly people, and still maintains the stately antebellum plantations and majestic oaks of its early days. The atmosphere is elegant, yet relaxed and casual.

Louisiana Facts

Nickname:The Pelican State
Admitted to Union: April 30, 1812
State Colors: Gold, white and blue
State Bird:Brown Pelican

State Dog:Catahoula Leopard Dog
State Tree:Bald Cypress
State Flower:Magnolia
Climate:Subtropical

INTRO

THIS IS LSU

PLAYERS

COACHES

OPPONENTS

REVIEW

HISTORY

RECORDS

MEDIA



Louisiana State University and Agricultural & Mechanical College has, throughout its 144-year history, served the people of Louisiana, the region, the nation, and the world.



LSU is creating a revolution, one of pervasive change and advancement. For the past five years, the focus of the LSU community has been an increased commitment to excellence. Our progress has been dramatic and shows no sign of stopping.

Having witnessed many of yesterday's possibilities become today's tangible realities, the LSU community set forth to capitalize on its success. The goal was to improve our standing as a nationally competitive flagship university. Following intense discussions among the LSU Board of Supervisors, campus administrators, faculty, and student leaders, the objectives required to reach this status crystallized, providing the impetus for LSU's National Flagship Agenda.

LSU Facts

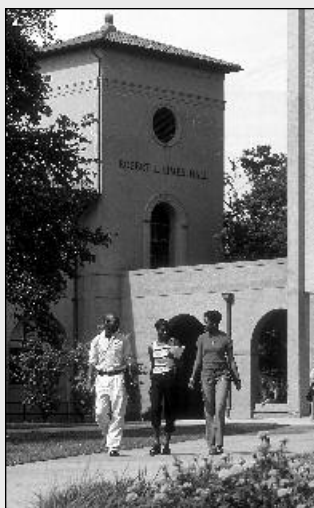
Location: Baton Rouge, La.
 Founded: January 2, 1860
 Enrollment: 31,234
 President: Dr. William Jenkins
 Major Fields for Bachelor's Degrees: 72
 Major Fields for Master's Degrees: 72
 Major Fields for Doctoral Degrees: 54



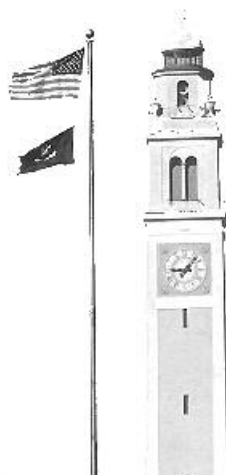
DIVERSITY

"The Most Diverse school in the nation."

Newsweek magazine named Louisiana State University the "Most Diverse" school in the nation in the Sept. 3, 2003 issue. The enrollment consists of 24 percent minority students.



"LOUISIANA STATE UNIVERSITY HAS A TRADITION OF GRATITUDE EXPRESSED IN SERVICE TO COMMUNITY AND COUNTRY."



President George W. Bush

2004 LSU SPRING COMMENCEMENT

Strong supporters of education throughout the state have provided resources for a variety of innovative projects that are attracting world-class researchers and their expertise to LSU. The National Flagship Agenda is working to improve the standing of the University, as well as strengthen its position as an economic engine for the state of Louisiana. As a result, the University community is even more determined to achieve excellence at every level.

LSU remains firmly focused on attaining national flagship status by 2010, the University's 150th anniversary. The resolve of the LSU community and the support of the state make these goals attainable. And, if the last five years are any indication of success, the next phase of this agenda will guarantee LSU's place in the arena of national prominence.

Because of its designation as a doctoral/research university by the Carnegie Foundation, LSU ranks in the top 2 percent of the nation's colleges and universities. This designation is shared by only 59 public and 29 private universities across the nation. LSU is also one of only 25 universities nationwide designated as both a land-grant and sea-grant college.

History and tradition began with LSU's founding in 1853 by the General Assembly of Louisiana as the Louisiana State Seminary of Learning and Military Academy near Pineville, Louisiana. The

institution opened January 2, 1860. When the Civil War began, the school's first superintendent, William Tecumseh Sherman, resigned to assume a command in the Union Army. The seminary reopened in 1869, but was soon destroyed by fire. The institution moved to Baton Rouge, opening on Nov. 1, 1869.

In 1870, the Seminary was renamed Louisiana State University. In 1874, under the United States Morrill Act, the Louisiana State Agricultural & Mechanical College was established in New Orleans. The two institutions were merged by the Legislature in 1877 to become Louisiana State University and Agricultural & Mechanical College.

Construction on the present campus began in 1922 and the first classes were held in 1926. LSU experienced major growth in the 1930s and 1940s, expanding its student body, curricula, and services. During the 1960s, the University began to place increasing emphasis on research.

Recognizing the importance and extent of statewide agricultural activities of units in the LSU System, the LSU Board of Supervisors established the Center for Agricultural Sciences & Rural Development in 1972. This unit was renamed the LSU Agricultural Center in 1982. Components of the LSU Agricultural Center include the Louisiana Agricultural Experiment Station, the Louisiana Cooperative Extension Service and

International Programs.

The primary mission of the LSU Agricultural Center is to conduct research in agricultural and natural resource development and to provide off-campus extension education that disseminates technological, economic, and management information to Louisiana residents.

In 1977, the Paul M. Hebert Law Center, established as the LSU Law School in 1906, was made an autonomous division of the LSU System. The Law Center provides legal education characterized by an unyielding demand for academic excellence. Its unique curriculum, based on civil law as well as substantial elements of common law, provides law graduates with qualifications and training for not one, but two legal systems. The Hebert Law Center holds membership in the Association of Law Schools and is on the approved list of the American Bar Association.

LSU, located on more than 2,000 acres in the southern part of Baton Rouge, Louisiana, is bordered on the west by the Mississippi River. The University's more than 250 principal buildings are grouped on a 650-acre plateau that constitutes the main part of the campus.

LSU and A&M College is accredited by the Southern Association of Colleges and Schools.

INTRO

THIS IS LSU

PLAYERS

COACHES

OPPONENTS

REVIEW

HISTORY

RECORDS

MEDIA

INTRO

THIS IS LSU

PLAYERS

COACHES

OPPONENTS

REVIEW

HISTORY

RECORDS

MEDIA



Amenities

- ▶ 54,000 square feet of working space
- ▶ 75 computer workstations
- ▶ 14 private computer rooms in a state-of-the-art computer lab
- ▶ Additional study rooms and classrooms for private or group study
- ▶ Electronic scheduling of tutoring sessions
- ▶ A 1,000-seat auditorium for classes and lectures



Paramount to the success of the “student” half of the term student-athlete is providing LSU athletes with the best possible resources to excel in the classroom. For more than 20 years, the LSU Academic Center for Student-Athletes has helped to build well-rounded student-athletes. But as times change and technology advances, the need for further improvements still exists. As a result, the Cox Communications Academic Center for Student-Athletes opened its doors in November of 2002. A \$15 million renovation to the Gym Armory not only made it among the nation’s premier centers, but put it at the forefront. Improvements to the existing center give LSU student-athletes the best opportunity for success by providing access to the latest technology, as well as an array of expanded services.



Computer Stations

Throughout the Academic Center are 75 computer stations, providing student-athletes with a quiet working environment for research, writing and studying.



Bo Campbell Auditorium

The 1,000-seat auditorium is used throughout the year as a classroom and lecture hall. Each seat in the auditorium has space for a laptop and a modem hookup, providing each student unlimited learning opportunities. The auditorium also contains a movie theatre size screen to aid professors with lectures and classroom activities.



The Library

The library provides a perfect setting for individual study, or with a tutor as group.

Study Area

Included in the 54,000 square feet of the Academic Center are individual study areas as well as 14 private computer rooms for student-athletes to work one-on-one with tutors or by themselves.



2004 SEC ACADEMIC HONOR ROLL



LSU has led the SEC in the number of players on the SEC Academic Honor Roll in four of the last six seasons. Since Fran Flory arrived in 1998, the Tigers have had the second-most honorees of any school in the league.

For three of the last five seasons, the volleyball team has been recognized by the American Volleyball Coaches Association for having one of the top team grade-point averages in the nation.

STUDENT ATHLETE	CLASS	MAJOR
Beth Cowley	Grad.	MBA
Michelle Hensgens	Fr.	Kinesiology
Regan Hood	Sr.	Kinesiology
Ivana Kuzmic	Jr.	Studio Art
Rachel Pittman	Sr.	Mass Communications
Mina Spasojevic	Fr.	Undeclared
Kate Spytek	Fr.	Undeclared

INTRO

THIS IS LSU

PLAYERS

COACHES

OPPONENTS

REVIEW

HISTORY

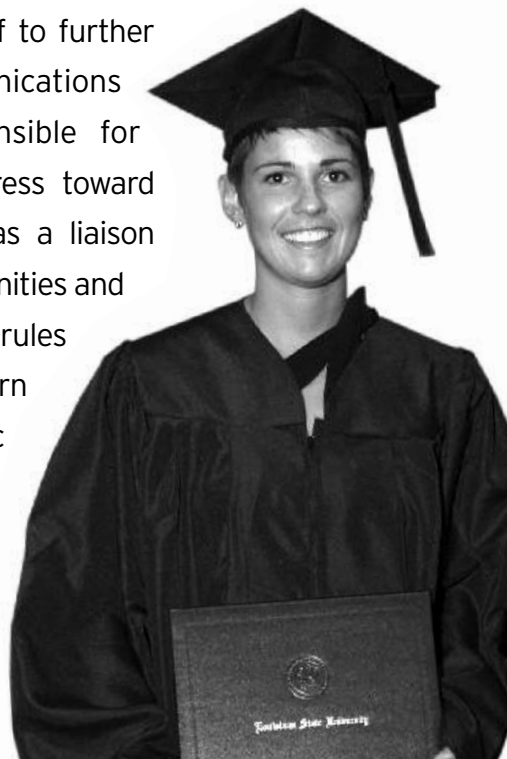
RECORDS

MEDIA

Critical to the development of an athlete as a student is an adequate academic facility and capable staff to further the athlete's progress. The Cox Communications Academic Center for Student-Athletes is responsible for overseeing the educational development and progress toward graduation for all student-athletes. The staff acts as a liaison between the student-athlete and the academic communities and insures that student-athletes comply with academic rules established by the University, NCAA and Southeastern Conference. The staff also coordinates academic programs designed to assist student-athletes in acquiring a quality education.

SEC Academic Honor Roll

Former Tiger outside hitter Jennifer Hampton completed her degree in kinesiology in the spring of 2003 after being named to the SEC Academic Honor Roll for three consecutive seasons.



The Goal

For each student-athlete to reach and receive the highest-quality education and degree.

The Responsibility

To oversee the educational development and progress toward graduation for all student-athletes.

Tutoring

Career Counseling
and DevelopmentComply with academic
rules established by
LSU, the NCAA and SEC

Time Management

Study Skills

ACADEMIC SUPPORT STAFF



Dr. Roger Grooters
Executive Director



Ted White
Director



Jim Rost
Associate Director



Dr. Mary Boudreaux
Associate Director



Tim Boyle
Associate Director



Rachel Lassiter
Coordinator



Tommy Powell
Technology Specialist



Gwendolyn Clark
Educational Support



Dr. Tommy Karam
Director/Communications Lab



Jeanne Hieronimus
Learning Specialist

Melody Clark, along with two baseball players, speak to students at Greenville Elementary about the importance of goals and staying in school.



Community Outreach

The Community Service aspect does not only serve to enhance a student-athletes college experience, but also serves to expand character. Players not only gain a strong sense of self-worth, but also experiences personal satisfaction and growth from volunteering and community service activities. More importantly are the benefits that the community receives. It enables the community to gain an enormous advantage in feeling that they have a "partnership" with LSU student-athletes.

LSU student-athletes participate in a variety of community service projects including reading in schools, nursing home visits, hospital pediatric ward visits, speaking engagements and more in East Baton Rouge Parish.

COMMUNITY SERVICE



In the Community

Beth Cowley (top left) plays volleyball with children at the annual Halloween BOOzar, members of the volleyball team sponsored a family in the annual Christmas Toy Drive (bottom left), which distributes presents to underprivileged children, and members of the volleyball team spend some time with a young child at a local hospital.



Shaquille O'Neal CHAMPS/Life Skills

ACADEMIC EXCELLENCE

ATHLETIC EXCELLENCE

CAREER DEVELOPMENT

PERSONAL DEVELOPMENT

COMMUNITY SERVICE

The CHAMPS/Life Skills program was developed by the NCAA to help prepare student-athletes for the challenges of life beyond the playing field. Through workshops, service projects, and social events, CHAMPS, an acronym for Challenging Athletes Minds for Personal Success, brings LSU student-athletes information that will prepare them for the biggest game of all - the game of life!



How Can CHAMPS Help?

By focusing on "real life" skills and personal development, the CHAMPS Program not only assists the student-athletes with meeting daily challenges, but also enhances student-athlete's growth in their college years and beyond.

CHAMPS at LSU

The CHAMPS/Life Skills program at LSU is operated out of the Academic Center for Athletes, and the focus of the program is on five commitments viewed as critical to personal growth:



Mike Mallet

Director for the CHAMPS/Life Skills program



Jennifer Board

Assistant Director for the CHAMPS/Life Skills program

INTRO

THIS IS LSU

PLAYERS

COACHES

OPPONENTS

REVIEW

HISTORY

RECORDS

MEDIA



PETE MARAVICH ASSEMBLY CENTER



The Pete Maravich Assembly Center, which seats 14,164 people, is the largest volleyball venue in the Southeastern Conference. LSU has been able to use the PMAC as a great home court advantage since beginning play there in 1982. Twice in the last 20 years, LSU has put together undefeated seasons in the Assembly Center -- 1986 and 1991. In addition, the Tigers have produced home winning streaks of 37 and 30 matches and have not posted a losing home record since 1997. The PMAC has hosted six NCAA Volleyball Tournament matches, including the 1991 South Regional which LSU won to advance to the Final Four.



MARAVICH CENTER

INTRO

THIS IS LSU

PLAYERS

COACHES

OPPONENTS

REVIEW

HISTORY

RECORDS

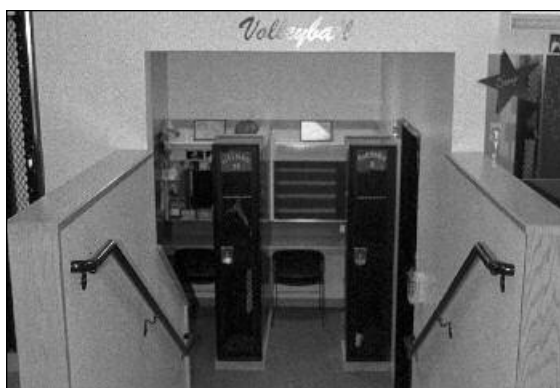
MEDIA



LOCKER ROOM

LOCKER ROOM

The LSU locker room is located in the northwest corner of the Pete Maravich Assembly Center, directly between the playing floor of the PMAC and the auxiliary gym, which serves as the Tigers' practice facility. The locker room, a two-tiered facility which is equipped with a players lounge, was remodeled prior to the 2000 season and has locker space for each athlete.



INTRO

THIS IS LSU

PLAYERS

COACHES

OPPONENTS

REVIEW

HISTORY

RECORDS

MEDIA



AUXILIARY GYM

AUXILIARY GYM

Amenities

- ▶ Two full-size volleyball practice courts
- ▶ Working scoreboard
- ▶ Located down the stairs from the volleyball locker room



The LSU volleyball team has the luxury of its very own practice facility in the Pete Maravich Assembly Center. Located underground in the north portion of the arena, the auxiliary gym provides the Tigers with an area that can hold two volleyball courts side-by-side. The auxiliary gym is located just down the stairs from the LSU locker room.



STRENGTH & CONDITIONING

WEIGHT ROOM

The LSU strength and conditioning facility, located in Tiger Stadium, was built in 1997 and features the latest in both strength training and cardiovascular training equipment. Measuring 10,000-square feet, LSU has one of the finest strength and conditioning facilities in the nation.

LSU strength and conditioning team took a new direction in 2000 under strength coach Tommy Moffitt, who was named the 1999 Collegiate Football Strength and Conditioning Coach of the Year by the Professional Football Strength and Conditioning Coaches Society.

Strength and conditioning can be the heart and soul of an athletic program's success, and LSU has taken great strides to improve its strength program and facilities.

Amenities

- ▶ 28 multi-purpose power stations
- ▶ 36 assorted selectorized machines
- ▶ 10 dumbbell stations with two sets of five-180 pound free weights
- ▶ Custom made equipment by Body Masters and Eleiko



FACILITY BUILT BY THE TIGER ATHLETIC FOUNDATION



INTRO

THIS IS LSU

PLAYERS

COACHES

OPPONENTS

REVIEW

HISTORY

RECORDS

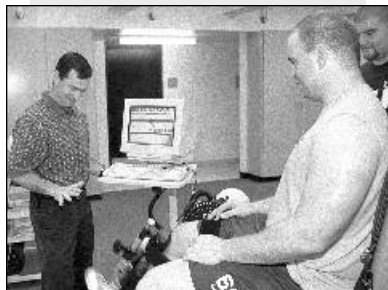
MEDIA



DR. MARTIN J. BROUSSARD CENTER FOR ATHLETIC TRAINING

Amenities

- ▶ 23,000 square foot athletic training facility
- ▶ On-site x-ray room
- ▶ In-house full-service pharmacy
- ▶ In-house dental and vision centers
- ▶ A Hydrotherapy pool



LSU boasts the largest and most complete athletic training facility in all of collegiate athletics. Focused on aggressive rehabilitation, the Broussard Center for Athletic Training is furnished with the latest technology and equipment. Some of the features of the 23,000-square foot facility include an on-site X-ray room, an in-house pharmacy, as well as state of the art hydrotherapy pools. The Broussard Center for Athletic Training is equipped with the largest hydrotherapy pools in both collegiate and professional sports and is one of the few collegiate training centers with a full-service pharmacy, as well as on-site x-ray room. LSU is also the only school in college athletics with a training room equipped with a full-service vision center. The facility is named in honor of legendary trainer Dr. Martin J. Broussard, who served as LSU's athletic trainer for several decades.

FACILITY BUILT BY THE TIGER ATHLETIC FOUNDATION





Dr. William L. Jenkins

President, LSU

On April 1, 1999, Dr. William L. Jenkins, formerly Chancellor of Louisiana State University and Agricultural & Mechanical College, became president of the LSU System, which includes nine institutions on 10 campuses in five cities, as well as 10 public hospitals in 10 cities.

A native of South Africa, Dr. Jenkins studied at the University of Pretoria, where he received his professional veterinary medicine degree in 1958 and specialist credentials in 1968. He received his Ph.D. degree from the University of Missouri, Columbia, in 1970. After practicing veterinary medicine for four years, he joined the faculty at the University of Pretoria, advancing through the ranks to become professor and head of the Department of Veterinary Physiology, Pharmacology, & Toxicology in 1971.

He moved to the United States in 1978 and joined the faculty in the Department of Veterinary Physiology & Pharmacology at Texas A&M University. He was appointed dean of the LSU School of Veterinary Medicine in 1988, and was named LSU's provost and vice chancellor for academic affairs in September 1993.

When he was appointed LSU's fifth chancellor in November 1996, Dr. Jenkins reorganized the campus administration to be more effective and more responsive, and oversaw the development of a strategic plan to guide the University in its preparation for the challenges of the next century.

Over the years, Dr. Jenkins has received numerous teaching and service awards and recognitions, having been named the 1997 Communicator of the Year by the Public Relations Association of Louisiana and a Distinguished Alumnus by the University of Missouri in 1999. The regional chapter of Toastmasters International also presented him with its 1999 Communication and Leadership Award, and he was awarded the Vision of Excellence Award 2000 by the New Orleans Regional Chamber of Commerce and the New Orleans Chapter of MetroVision. In addition, the

University of Pretoria awarded an honorary doctoral degree to Dr. Jenkins in September 2000.

Dr. Jenkins has been active in continuing education and has delivered more than 150 lectures and addresses to diverse groups in both the United States and abroad. He has taught extensively at both the professional and graduate levels. He has published more than 60 scientific articles and has contributed 15 chapters to various textbooks. He is co-author of a textbook on veterinary pharmacology.

Dr. Jenkins has been and continues to be a member of many professional organizations and select committees. Most recently he served on the National Institute of Health's Alcohol Abuse and Misuse on College Campuses Committee and on a special Steering Committee of the Southern Association of Colleges and Schools to review accreditation criteria for colleges and universities. Dr. Jenkins also is a member of the National Association of State Universities and Land Grant Colleges' Committee on Food and Society and currently serves on the Governor's Advisory Commission on Coastal Restoration and Conservation.

His current community engagement includes serving on the boards of the Louisiana Endowment for the Humanities, Greater Baton Rouge Chamber of Commerce, Academic Distinction Fund, Council for a Better Louisiana, Arts Council of Greater Baton Rouge, The Nature Conservancy of Louisiana, and the Baton Rouge board of the National Conference for Community and Justice.

Dr. Jenkins and his wife, Peggy, have four children - Sharon, Gwynn, Anthea, and Warren - and nine grandchildren.

INTRO

THIS IS LSU

PLAYERS

COACHES

OPPONENTS

REVIEW

HISTORY

RECORDS

MEDIA

INTRO

THIS IS LSU

PLAYERS

COACHES

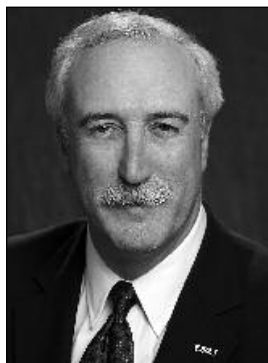
OPPONENTS

REVIEW

HISTORY

RECORDS

MEDIA



Sean O'Keefe

Chancellor, LSU

Sean O'Keefe has been appointed chancellor of Louisiana State University and Agricultural & Mechanical College, becoming the seventh chancellor to lead the state's flagship University.

Nominated by President George W. Bush and confirmed by the United States Senate, Sean O'Keefe was appointed by the President as the 10th Administrator of the National Aeronautics and Space Administration on December 21, 2001, his fourth Presidential appointment. As Administrator, O'Keefe led the NASA team and managed its resources as NASA sought to advance exploration and discovery in aeronautics and space technologies.

O'Keefe joined the Bush Administration on inauguration day and first served as the Deputy Director of the Office of Management and Budget until December 2001, overseeing the preparation, management and administration of the Federal budget and government wide-management initiatives across the Executive Branch.

Prior to joining the Bush Administration, O'Keefe was the Louis A. Bantle Professor of Business and Government Policy, an endowed chair at the Syracuse University Maxwell School of Citizenship and Public Affairs. He also served as the Director of National Security Studies, a partnership of Syracuse University and Johns Hopkins University, for delivery of executive education programs for senior military and civilian officials. Appointed to these positions in 1996, he was previously Professor of Business Administration and Assistant to the Senior Vice President for Research and Dean of the Graduate School at the Pennsylvania State University.

Appointed as the Secretary of the Navy in July 1992 by President George Bush, O'Keefe had previously served as Comptroller and Chief Financial Officer of the Department of Defense since 1989. Before joining then Defense Secretary Dick Cheney's Pentagon management team in these capacities, he served on the United States Senate Committee on Appropriations staff for eight years, and was Staff Director of the Defense Appropriations Subcommittee. His public service began in 1978 upon

selection as a Presidential Management Intern.

O'Keefe is a Fellow of the National Academy of Public Administration, a member of the Committee on Climate Change Science and Technology, and a Fellow of the International Academy of Astronautics. During his academic postings, he was a Visiting Scholar at the Wolfson College of the University of Cambridge in the United Kingdom, a member of the Naval Postgraduate School's civil-military relations seminar team, and conducted seminars for the Strategic Studies Group at Oxford University. He served on the national security panel to devise the 1988 Republican platform and was a member of the 1985 Kennedy School of Government program for national security executives at Harvard University.

In 1993, President Bush and Secretary Cheney presented him the Distinguished Public Service Award. He was the 1999 faculty recipient of the Syracuse University Chancellor's Award for Public Service; recipient of the Department of the Navy's Public Service Award in December 2000; and has been awarded honorary doctorate degrees from several prestigious educational institutions. In March 2003 and 2004, he was recognized and honored by the Irish American Magazine as one of the Top 100 Irish Americans.

He is the author of several journal articles, contributing author of "Keeping the Edge: Managing Defense for the Future" released in October 2000, and in 1998 co-authored "The Defense Industry in the Post-Cold War Era: Corporate Strategies and Public Policy Perspectives."

Sean O'Keefe earned his Bachelor of Arts in 1977 from Loyola University in New Orleans, Louisiana, and his Master of Public Administration degree in 1978 from The Maxwell School. O'Keefe and his wife Laura have three children- Lindsey, Jonathan and Kevin.



Kenneth E. Carpenter, Faculty Athletics Representative

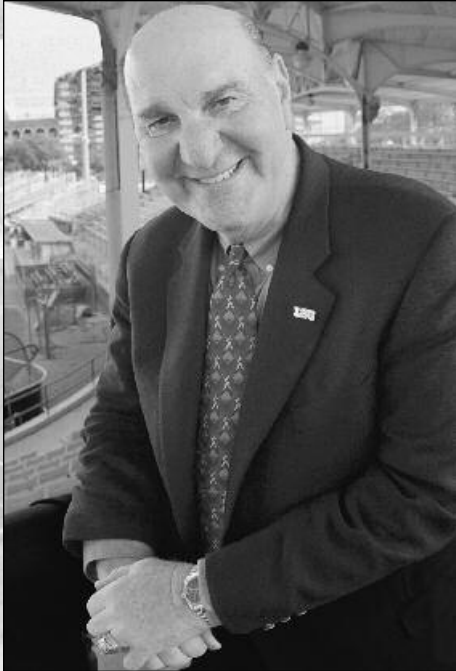
Kenneth E. Carpenter is in his second year as LSU's faculty representative in NCAA and Southeastern Conference matters.

Carpenter, a professor in the School of Architecture, has taught at LSU since 1986. He received his bachelor's degree in architecture from the University of Oklahoma in 1962 and his master's from the University of Minnesota in 1967. Before joining the LSU faculty, he served at Clemson University as associate professor of architecture from 1967-77; Ball State University, where he was professor and chairman of the Department

of Architecture, 1977-81; and, Iowa State University, serving as professor and chairman, Department of Architecture from 1981-86.

At LSU he served as the dean of the College of Design from 1986-1997; Interim Executive Director of International Programs from 1997-98; and Interim Dean of the College of Art and Design from 2001-02.

Carpenter is a member of Phi Kappa Phi, the American Institute of Architects, and the American Association of University Professors.



The SKIP BERTMAN Legacy

Bertman's unyielding desire to succeed drove him to the pinnacle of his profession, and his astute knowledge of the game -- obtained from over 40 years of coaching -- combined with his steadfast determination and irrepressible enthusiasm transformed LSU Baseball into the nation's premier program.

National Championships

2000, 1997, 1996, 1993, 1991

SEC Championships

1997, 1996, 1993, 1992, 1991, 1990, 1986

Career Record (1984-2001)

870-330-3 (.724)

NCAA Tournament Record

89-29 (.754), highest winning percentage in NCAA history

National Coach of the Year

2000, 1997, 1996, 1993, 1991, 1986

College World Series Appearances

2000, 1998, 1997, 1996, 1994, 1993, 1991, 1990, 1989, 1987, 1986

Already a Louisiana Legend and one of the greatest college baseball coaches of all time, J. Stanley "Skip" Bertman has made the seamless transition into the athletics director's chair with the same enthusiasm, vision and demand for excellence that were trademarks of his stellar coaching career.

In just four years as LSU's director of athletics, Bertman has already added to his impressive list of on-the-field achievements. Under his direction, LSU enjoyed arguably the greatest athletics years in the history of the institution. In 2003-04 three teams won national championships, nine teams finished in the nation's top ten, and fourteen teams ranked in the top 25 and in 2004-05 14 teams advanced to the post-season. LSU teams also enjoyed improved grade point averages across the board, making the LSU student-athlete experience a success on and off the fields of competition.

While supervising the Tigers' progress on the playing fields, he has begun to implement measures necessary to realize his vision of building the LSU athletics department into the best in the country. Bertman's bold and innovative plans promise to keep the Tigers among the nation's elite in all phases of collegiate athletics.

Bertman is now in the midst of upgrading LSU's athletics complex. Working hand in hand with the Tiger Athletic Foundation, Bertman has already overseen the completion of the Cox Communications Academic Center for Student-Athletes while renovating Tiger Stadium and the Pete Maravich Assembly Center, and constructing the Football Operations Center.

It was also Bertman who took the bold but essential move to implement a seat contribution program in Tiger Stadium to fund facility improvements and ensure the financial stability of the LSU Athletics Department for the next decade.

Bertman was named LSU's athletics director on January 19, 2001. With Bertman, LSU gained an athletics director who provides the leadership and experience necessary to manage the Tigers' \$52 million budget.

Bertman guided LSU to five NCAA baseball titles, and his teams drew huge crowds to venerable Alex Box Stadium, as the Tigers led the nation in attendance in each of his final six seasons (1996-2001).

He also served as head coach of the 1996 U.S. Olympic team which captured the bronze medal in Atlanta.

Bertman continues to be honored for his remarkable coaching tenure, as he was inducted in June, 2002, into the Louisiana Sports Hall of Fame. He was inducted into the American Baseball Coaches Association Hall of Fame in January, 2003.

In a Baseball America poll published in 1999, Bertman was voted the second greatest college baseball coach of the 20th century, trailing only Rod Dedeaux of Southern California. Bertman and Dedeaux are the only coaches to win five CWS titles.

He had previously earned recognition as one of the nation's brightest assistant coaches while at the University of Miami (Fla.) for eight seasons (1976-83). Before working at Miami, Bertman was renowned for his coaching excellence. In 11 seasons at Miami Beach High School, he directed the Hi-Tides to a state championship and two runners-up finishes and he was named Florida's Coach of the Year on three occasions.

In 1975, Bertman coached at Miami-Dade Downtown, leaving after one season to join legendary head coach Ron Fraser at Miami. The move was a homecoming of sorts, as Bertman spent his collegiate playing days with the Hurricanes as an outfielder and catcher from 1958-60. He earned his B.A. in health and physical education from Miami in 1961 and received his master's degree from UM in 1964.

Bertman and his wife Sandy are the parents of four daughters - Jan, Jodi, Lisa and Lori. The Bertmans have three grandchildren - Sophie Faith and Isaac Stanley, the children of Emile and Lori Bertman Guirard, and Samuel Aaron, the son of Drew and Lisa Pate.

INTRO

THIS IS LSU

PLAYERS

COACHES

OPPONENTS

REVIEW

HISTORY

RECORDS

MEDIA



SOUTHEASTERN CONFERENCE

The 2000 Tigers advanced through the SEC Tournament to face Florida in the championship game.

Year after year, the Southeastern Conference shows why it is considered to be one of the premier volleyball conferences in the nation. In the 1990's and continuing into the 2000's, the SEC made stellar contributions to the sport of volleyball.

The conference has sent at least two teams to the NCAA Tournament in every season for the last 15 years. The SEC had a team reach the Final Four nine of the last 15 seasons, with Florida advancing to the National Championship game against Southern California in 2003.

In 2004, Florida competed in its 14th straight NCAA Tournament. Tennessee, Georgia and Arkansas were also selected to the field.

Since the inaugural SEC volleyball championship in 1979-80, many changes have occurred in the conference. The addition of Arkansas and South Carolina to the league in 1991 brought the divisional format to the sport with five teams competing in the Eastern Division and six teams in the Western Division. The most recent change came in 1999 as the tournament format moved to an eight team field participating in a three-day league tournament.

Along with the popularity growth throughout the country, women's volleyball has also grown in the SEC. A benchmark in that growth came in 1995 when SEC volleyball was first broadcast on SEC-TV on a tape-delay basis. For the past 10 seasons the coverage has grown, especially in the last five years, to live telecasts of several regular season matches and the SEC Tournament championship match. SEC volleyball will continue to enjoy live coverage on SEC-TV in 2005, reaching almost 22 million subscribers in the conference's nine-state region.

SEC Volleyball

A STANDARD OF EXCELLENCE

- ▶ The 2004 season marked the 15th consecutive year the SEC has placed at least two teams in the NCAA Tournament.
- ▶ Every team posted wins in double-digits, with three teams posting 20-plus wins in 2004. Tennessee led the way with 32 victories. Florida posted 28 wins, while Alabama notched 21.
- ▶ Florida made its 15th appearance in the NCAA Tournament and 14th in a row in 2004, falling in the second round to eventual national champion Stanford
- ▶ Florida's appearance in the National Championship game in 2003 marked the first appearance by the SEC in the title game in conference history.
- ▶ Three players were named AVCA All-Americans and nine players were named to All-Region teams in 2004.
- ▶ In the past 14 years, 775 athletes have been named to the SEC Academic Honor Roll.