



WE'RE READY

Recruiting is a science that involves a lot of human guesswork, especially by the coaches that are recruiting players. Which ones will be available to fill the holes that sometimes occur on a college basketball team and can you get them at just the right time?

LSU went through the anxiety of a pro decision before when Stromile Swift was drafted high in the 2000 NBA draft. Because of scholarship restrictions, the Tiger program under John Brady hadn't built up any depth in returning and new players. So when Swift and Jabari Smith left after the 2000 season, there wasn't a bench strong enough to absorb two ACL injuries to key starters.

It has taken some time, and now the loss of a player is still felt, but there is sufficient recruiting depth to make the picture not look bleak at all. In fact, the defending

champions of the SEC Western Division are set to make a run again at the title and a sixth postseason berth in the last seven years with a team that looks a bit different, but has pieces that fit into the right parts of the puzzle.

The New Orleans Hornets drafted the Southeastern Conference Player of the Year, Brandon Bass, who was also the Scholar-Athlete of the Year in the league, after his sophomore season. Also leaving the team after the 2004-05 season were starting guard Antonio Hudson and backup point guard Xavier Whipple.

"We've been able to replenish well and we have a great recruiting class coming in and several guys we can plug into the lineup. Losing Brandon will hurt us some, but the loss is not nearly as significant as it was when we lost Stromile five years ago," said LSU Coach John Brady.

RETURNING LETTERMEN

The Tiger offense's top scorer and rebounder returning is **Glen Davis**, who enters his sophomore season after winning SEC Freshman of the Year honors. Davis had a busy off-season that started with changing his diet, working hard with strength and conditioning assistant **Jeff Dillman** and getting his weight down to 306 in late July when he headed to Dallas for the USA Basketball trials for the U21 World Championships in Argentina. Davis made that team and will be better as a sophomore for the experience of international basketball coming into SEC play.

Davis averaged 13.5 points per game and 8.8 rebounds last season, second on

the team. The scoring average was 15th best in the SEC and ranked fourth in rebounds.

Tack Minor played the point position all season long, but will miss at least the first four games as part of a university-related disciplinary issue that will keep him off the team until mid-December. Minor averaged 10.8 points, 3.9 rebounds and 4.5 assists (fourth in the league). Minor had a positive assist-to-turnover ratio (137-108) and the LSU coaches hope that Minor will keep himself in shape and be ready to perform at a high level when he rejoins the team in mid-December.

The Tigers lone senior, **Darrel Mitchell**, has continued to improve and has become the chief three-point threat on

the LSU squad. In his first three seasons, Mitchell has made 176 treys and as a junior averaged 13.1 points a game. He and enters the season just 35 points shy of 1,000 career points at LSU. Mitchell has the ability to take over games and make key shots down the stretch to get LSU several wins.

Darnell Lazare should see plenty of playing time in his junior season at both the forward positions and he has worked hard in the off-season in preparation for that chance. He showed his ability to fill in during the latter part of the 2003-2004 season, replacing Jaime Lloreda, and will be looked to show that determination again this year. In two years, he has made over 57 percent of his field goal attempts.

David Fleshman, a walk-on, rounds out the returning letterman and his knowledge of the Brady system will help the newcomers learn the system when they first arrive.

NEWCOMERS

The Tigers will have plenty of new talent to work into the rotation, most notably two redshirt players whom LSU fans had the chance to watch work out on many game nights prior to the game with assistant coach John Treloar.

Garrett Temple has one of the most famous last names in LSU history with his father, Collis, Jr., having played in the mid-1970s as the first African-American basketball player at the school and Garrett's older brother (Collis III) starring in the program just a few years ago. But Garrett enters with his own credentials and ironically, redshirted his first year like his brother. Temple was a double-figure scorer for University High and he could be called upon to help fill the point guard position in the early going.

Tyrus Thomas showed in his one exhibition appearance that he could jump out of the gym and his athletic ability was a pleasant surprise before a neck injury forced him to miss several weeks of practice. But a medical redshirt has given him four full years to show the talent that he displayed at McKinley High School in Baton Rouge where he averaged a double-double (16 pts., 12 reb.).

The junior college transfer among the newcomers is **Kentrell Gransberry**, a Woodlawn High product who will be reunited with former teammate Darnell Lazare after two years at San Jacinto. Gransberry is a strong rebounder, at the top of the junior college ranks in boards average, and may be the most physical player of the new Tigers. He averaged 11.1 points and a 13.7 rebounds with 86 blocked shots for a team that spent much of the year ranked No. 1 in the JC ranks.

Alex Farrer of Phoenix, Ariz., was the last signee the Tigers' inked for the 2005-06 season in the late signing period. The 6-5 guard/forward averaged 17.5 points, 9.2 rebounds and three blocked shots for a team that advanced to the Arizona Class 5A State Championship game. He will add to the Tigers' depth at the guard and small forward position.

Chris Johnson (6-11) and **Magnum Rolle** (6-10) come to LSU from the Laurinburg Prep school in North Carolina after a stellar season that saw the pair lead Laurinburg to the prep school national championship. Johnson averaged 8.6 points and 3.9 rebounds and his best days may be in the future once he gets into the program and establishes himself. Rolle is only entering his sixth year playing basketball but the Bahamas native averaged 10.2 rebounds and 4.5 blocked shots a game. His athletic

ability could be a big benefit for the Tigers.

Both of the final members of the freshman class certainly could be the most important, one because of his local connections and the other because he may be thrust into the limelight early on in the season.

Baton Rouge basketball fans have watched **Tasmin Mitchell** since the eighth grade and the LSU coaches have probably had their eye on him just as long. The prep All-American and Mr. Basketball in the state of Louisiana averaged 26.9 points per game, 10 rebounds and six assists at Denham Springs High School, just outside Baton Rouge. His ability is something that the Tigers hope translates quickly from high school to college ball.

When the coaching staff saw **Ben Voogd** play in the summer of 2004, they came back to Baton Rouge and said the Tigers needed to go after one of the toughest players they saw that summer. Voogd is a point guard and the freshman will certainly be called upon to step forward especially in the early going while Minor is on suspension. Voogd brings to the team the knowledge of a true point guard and team player and should be a welcome addition to the depth of that position.

THE SCHEDULE

The Tigers' schedule this year features some top-notch road games in non-conference play including the back end of home-and-home series with West Virginia (Nov. 27) and Ohio State (Dec. 31). LSU will also travel to Hartford, Conn., to meet UConn in a CBS game that will be returned to Baton Rouge next year.

The Tigers will also play in the Las Vegas Holiday Classic, a series of games with a unique format in that LSU will play Northern Iowa on Dec. 19 in Baton Rouge with games against Arkansas-Monticello and Cincinnati in Las Vegas on Dec. 22 and 23.

The home non-conference schedule will feature games the Tigers can win, but also those that will test the team early including a home opener against Southern, in-state games against McNeese State, UNO, Louisiana-Lafayette and Tulane, and the final game of an eight-year contract with the University of Houston. In conference play, the Tigers will face the five Western Division teams with Tennessee, Georgia and Kentucky from the East, the latter on CBS Sports for the third straight season.

All in all, a young LSU Tiger team will earn its stripes but should be able to rebound and make its own mark after losing a star much easier than Tiger teams in the recent past have been able to accomplish.



Glen Davis - 2005 SEC Freshman of the Year

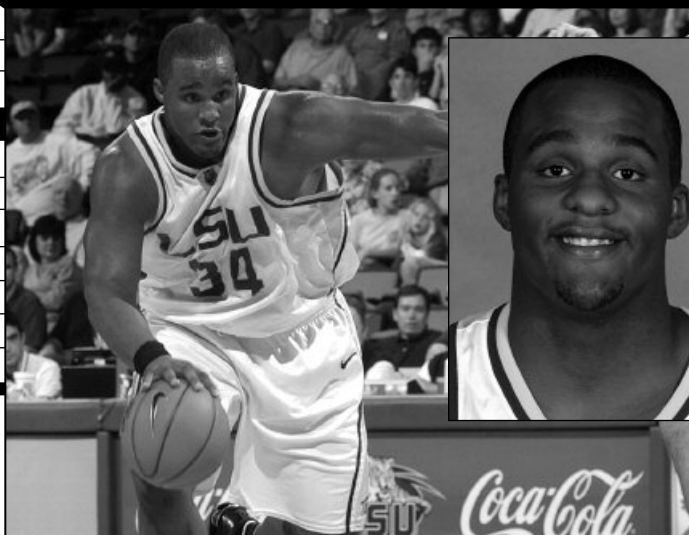
THE LINEUP

Returning Lettermen

No.	Name	Ht.	Wt.	Cl.	Exp.	PPG	RPG	A/BPG
0	Glen Davis	6-9	310	So.	1VL	13.5	8.8	1.4
3	Tack Minor	5-11	200	Jr.	2VL	10.8	3.9	4.6A
10	David Fleshman	6-0	184	So.	1VL	0.0	0.0	0.0
22	Darrel Mitchell	5-11	178	Sr.	3VL	13.1	2.6	2.9A
35	Darnell Lazare	6-8	240	Jr.	2VL	2.0	1.2	0.5

Newcomers

No.	Name	Ht.	Wt.	Cl.	Exp.	Notes
1	Tasmin Mitchell	6-7	230	Fr	HS	McDonald's All-American
4	Ben Voogd	6-1	175	Fr.	HS	Point-guard depth from Oregon
12	Tyrus Thomas	6-7	215	Fr	RS	Tremendous athletic ability from BR
14	Garrett Temple	6-5	176	Fr.	RS	Third member of family at LSU
15	Magnum Rolle	6-10	215	Fr.	HS	Prep school champion at Laurinburg
21	Chris Johnson	6-11	190	Fr.	HS	Prep school champion at Laurinburg
30	Alex Farrer	6-5	205	Fr.	HS	Adds depth team needs at G/F
44	Kentrell Gransberry	6-9	268	Jr.	TR	One of JC's top rebounders



Glen DAVIS

- **2005 SEC Freshman of the Year (Coaches)**
- **2005 SEC Newcomer of the Year (AP)**
- **2005 Dick Vitale Diaper Dandy of the Year, SEC**
- **2005 NABC All-District 8 Second Team**
- **First Team All-Louisiana**
- **Louisiana Freshman of the Year**
- **Dick Vitale Diaper Dandy of the Week, 1/18**
- **Member USA Basketball Under 21 National Team, Summer 2005**

O

**6-9 • 310 • Forward
Sophomore • 1VL
Baton Rouge, La.
University HS**

DAVIS' TOP 10 SCORING GAMES

1. 28 -- vs. South Carolina, 1-12-05
2. 27 -- vs. Southern Miss, 12-18-04
3. 26 -- vs. Arkansas, 1-19-05
4. 24 -- vs. Auburn (SECT), 3-11-05
5. 19 -- at Mississippi State, 2-16-05
6. 18 -- vs. UAB (NCAA), 3-17-05
7. 17 -- at Auburn, 2-26-05
7. 17 -- at Tennessee, 2-2-05
9. 16 -- vs. Tulane, 11-19-04
9. 16 -- vs. UNO, 11-24-04

CAREER HIGHS

Points	28, vs. South Carolina, 1-12-05
Rebounds	18, vs. Arkansas, 1-19-05
Field Goals Made	12, vs. South Carolina, 1-12-05
Field Goals Att.	19, vs. Southern Miss, 12-18-05
3 PT FG Made	1, three times
3 PT FG Att.	3, vs. UAB (NCAA), 3-17-05
Free Throws Made	10, vs. Arkansas, 1-19-05
Free Throws Att.	11, three times
Assists	4, vs. Miss. State, 1-29-05
Blocks	3, twice
Steals	3, at Alabama, 1-8-05
Minutes Played	42, vs. Arkansas, 1-19-05

FRESHMAN SEASON (2004-05)

Earned SEC Freshman of the Year, LSU's third time in the Brady era and the second consecutive year (Torriss Bright-2000, Brandon Bass-2003) ... Started 29 games after coming off the bench in the season opener, averaging 29.2 minutes a game ... Averaged 13.5 points, 8.8 rebounds and 1.4 blocks a game ... Shot over 50 percent from the floor (51.3 percent, 138-of-269) and showed a good touch at the free throw line, making 69.8 percent (127-of-182) ... Davis scored in double figures in 22 games and rebounded in double figures 12 times with 10 double doubles -- Tulane (11-19, 16 pts., 13 reb.), South Carolina (1-12, 28 pts., 14 reb.), Ohio State (1-15, 15 pts., 11 reb.), Arkansas (1-19, 26 pts., 18 reb.), Ole Miss (1-26, 13 pts., 10 reb.), Georgia (2-2, 12 pts., 11 reb.), Tennessee (2-5, 17 pts., 13 reb.), Alabama (2-21, 11 pts., 13 reb.), Kentucky (3-12, 11 pts., 10 reb.) and UAB (3-17, 18 pts., 11 reb.) ... Four games over 20 points highlighted by 28 against South Carolina (1-12), 27 vs. Southern Miss (12-18) and 26 against Arkansas (1-19) ... Finished the season 15th in the league in scoring, second in rebounds and ninth in blocks ... Finished third among the league freshman in scoring and first in rebounding ... From the Utah game, on Jan. 3, when Davis had just one rebound, the freshman's rebound average went up two full points from 6.8 rpg to 8.8 rpg ... His scoring average also went up two points from that game to the end of the season ... Represented LSU as a member of the U.S. Under 21 Team that finished fifth at the World Championships.

PRIOR TO LSU

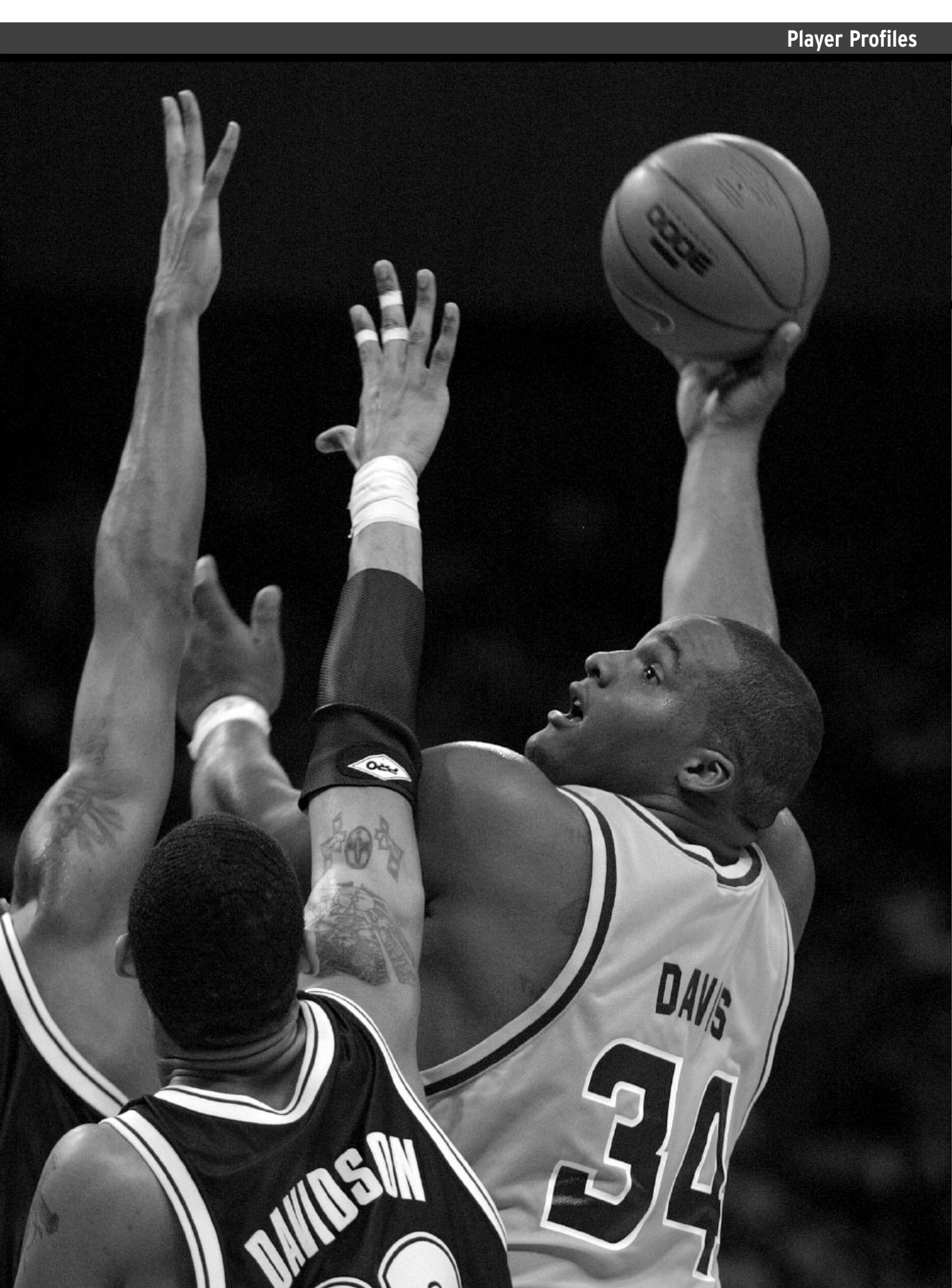
Concentrated on basketball his senior season for coach Ari Fisher, but also had a stellar career at University High at tailback of the football team ... Davis also tossed the shot for the U-High track team ... Earned Parade and McDonald's All-America honors, was named the Gatorade Player of the Year in the state of Louisiana, the Athlete of the Year as chosen by the Baton Rouge Advocate, Mr. Basketball by the Louisiana Sports Writers Association ... He was also named the most valuable player in Class 2A as well as being named the MVP of the Top 28 Class 2A Tournament ... Averaged 26.4 points and 14.3 rebounds a game along with four blocks.

PERSONAL

Born in Baton Rouge on Jan. 1, 1986 ... Full name is Ronald Glen Davis ... Nickname is "Big Baby" ... Father is Donald Robertson and mother is Tonya Davis ... Five other members of the family ... Anticipated major is business management ... His influence to come to LSU "family influenced me to further my education at LSU."

DAVIS' CAREER TOTALS

YEAR	GS-GS	MIN/AVG	FG-FGA	PCT.	3FG-3A	PCT.	FT-FTA	PCT.	REB.	AVG.	PF-FO	A	TO	BLK	STL	PTS-AVG.
04-05	30-29	876/29.2	138-269	.513	3-12	.250	127-182	.698	263	8.8	94-2	31	50	41	29	406-13.5
Totals	30-29	876/29.2	138-269	.513	3-12	.250	127-182	.698	263	8.8	94-2	31	50	41	29	406-13.5



INTRO
THIS IS LSU
TIGERS
COACHES
REVIEW
PREVIEW
RECORDS
HISTORY
LSU
MEDIA

INTRO

THIS IS LSU

TIGERS

COACHES

REVIEW

PREVIEW

RECORDS

HISTORY

LSU

MEDIA

Davis' Game-by-Game Totals

2004-05

Opponent	Min.	FG	3FG	FT	REB	PF-FO	A	TO	BLK	STL	PTS
Tulane	24	4-6	0-0	8-11	13	2-0	0	3	1	1	16
Louisiana-Lafayette	25	1-6	0-0	1-2	13	2-0	2	3	0	1	3
New Orleans	29	6-9	0-1	4-6	5	3-0	0	2	1	2	16
West Virginia	20	1-7	0-0	6-8	8	3-0	0	0	0	0	8
Northwestern State	24	3-8	0-0	4-5	7	4-0	0	2	2	0	10
McNeese State	28	6-9	0-0	3-6	7	4-0	2	1	1	1	15
vs. Southern Miss	38	9-19	0-0	9-11	3	3-0	0	2	1	1	27
at Houston	32	1-5	0-0	6-8	-6	3-0	1	1	1	1	8
vs. Florida State	23	3-4	0-0	2-2	5	4-0	1	3	2	1	8
at Utah	25	1-4	0-1	2-2	1	3-0	1	0	1	1	4
at Alabama	32	5-11	0-1	3-5	7	4-0	1	2	2	3	13
South Carolina	35	12-17	1-1	3-4	14	2-0	0	1	0	1	28
Ohio State	37	7-16	0-2	1-1	11	3-0	3	1	2	1	15
Arkansas	42	8-12	0-1	10-11	18	4-0	1	2	2	2	26
at Kentucky	30	1-5	0-0	7-10	12	3-0	0	5	2	1	9
Ole Miss	33	5-8	0-0	3-4	10	1-0	1	2	1	2	13
Mississippi State	22	1-7	0-0	1-2	8	4-0	4	1	1	1	3
at Georgia	30	3-6	0-0	6-7	11	4-0	2	1	1	1	12
at Tennessee	28	5-9	0-0	7-9	13	5-1	1	3	1	0	17
Auburn	26	4-6	0-0	4-4	5	2-0	3	1	2	2	12
at Arkansas	27	4-8	0-0	3-5	7	3-0	2	1	2	1	11
at Mississippi State	28	8-11	0-0	3-6	9	3-0	1	2	2	1	19
Florida	31	3-5	0-0	5-6	8	3-0	0	3	0	1	11
Alabama	31	4-10	0-0	3-6	13	3-0	1	2	2	0	11
at Auburn	26	7-7	0-0	3-6	7	2-0	2	0	1	1	17
at Ole Miss	27	1-6	0-1	6-6	8	4-0	1	1	2	0	8
Vanderbilt	29	5-10	0-0	3-8	5	3-0	1	0	3	0	13
vs. Auburn	26	9-11	1-1	5-9	8	1-0	0	0	1	0	24
vs. Kentucky	35	4-11	0-0	3-7	10	4-0	0	2	3	0	11
vs. UAB	33	7-16	1-3	3-5	11	5-1	0	3	1	2	18
Totals	876	138-269	3-12	127-182	263	94-2	31	50	41	29	406



6' 9 in.

6 ft.

5 ft.

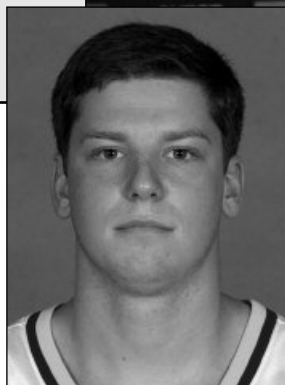
4 ft.

3 ft.

2 ft.

1 ft.



David **FLESHMAN**

INTRO

THIS IS LSU

TIGERS

COACHES

REVIEW

PREVIEW

RECORDS

HISTORY

LSU

MEDIA

Unable to play for much of the year following ACL surgery, Fleshman was still a big help on the scout teams and at practice sessions preparing for games.

FRESHMAN SEASON (2004-05)

Played in two games, vs. Tulane (11-19) and UNO (11-24) ... Missed only field goal attempt against UNO.

PRIOR TO LSU

Senior high school basketball season was limited to the final few weeks of the season after tearing his ACL during the first football game of the 2003 season ... Prior to his injury, had been a starter since eighth grade at Dunham, averaging 17 points, six rebounds and seven assists per game ... Played for Coach Jonathon Pixley at Dunham, a former player for Coach John Brady when Brady was the coach at Samford ... Also played football (wide receiver, defensive back) for four years and ran the 400 meters in track ... First-team All-District for four years, scored over 1,000 career points and was selected to play in the LHSCA/Coca-Cola All-Star game ... All-District for three years, including two years All-Metro and one-year All-State ... Graduated with honors from Dunham.

PERSONAL

Born in Baton Rouge on Nov. 4, 1985 ... Righthanded ... Parents are Ed and Nina Fleshman ... Two brothers and one sister ... Listed AAU Coach Darryl Thrower and high school coach Jonathan Pixley as big influences because they, "always pushed me both physically and mentally to be the best basketball player and person I could be" ... Anticipated major is political science ... Likes to read and to watch TV ... favorite singer is Garth Brooks ... Favorite basketball player is John Stockton.

10

6-0 • 184 • Guard
Sophomore
Baton Rouge, La.
The Dunham School

CAREER HIGHS

Points	
Rebounds	
Field Goals Made	
Field Goals Att.	1, vs. UNO, 11-24-04
3 PT FG Made	
3 PT FG Att.	
Free Throws Made	
Free Throws Att.	
Assists	
Blocks	
Steals	
Minutes Played	2, vs. Tulane, 11-19-04

Fleshman's Game-by-Game Totals**2004-05**

OPPONENT	MIN.	FG	3FG	FT	REB	PF-FO	A	TO	BLK	STL	PTS
Tulane	2	0-0	0-0	0-0	0	1-0	0	1	0	0	0
New Orleans	1	0-1	0-0	0-0	0	0-0	0	0	0	0	0
Totals	3	0-1	0-0	0-0	0	1-0	0	1	0	0	0

FLESHMAN'S CAREER TOTALS

YEAR	GS-GS	MIN/AVG	FG-FGA	PCT.	3FG-3A	PCT.	FT-FTA	PCT.	REB.	AVG.	PF-FO	A	TO	BLK	STL	PTS-AVG.
04-05	2-0	3/1.5	0-1	.000	0-0	.000	0-0	.000	0	0.0	1-0	0	1	0	0	0-0.0
Totals	2-0	3/1.5	0-1	.000	0-0	.000	0-0	.000	0	0.0	1-0	0	1	0	0	0-0.0

INTRO

THIS IS LSU

TIGERS

COACHES

REVIEW

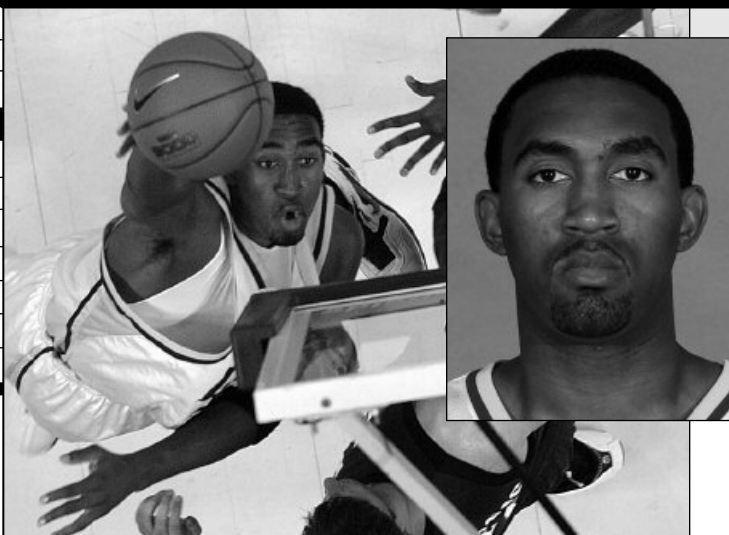
PREVIEW

RECORDS

HISTORY

LSU

MEDIA



Darnell LAZARE

35

6-8 • 240 • Junior
Forward
Baton Rouge, La.
Woodlawn HS

LAZARE'S TOP 10 SCORING GAMES

1. 13 -- vs. Southern, 11-21-03

2. 11 -- at Auburn, 3-6-04

3. 10 -- vs. Auburn, 2-18-04

4. 9 -- vs. UNO, 11-24-04

4. 9 -- vs. Auburn, 2-9-05

6. 8 -- vs. Louisiana-Monroe, 11-29-03

7. 7 -- vs. Tulane, 11-19-04

8. 5 -- vs. UAB, 12-27-03

8. 5 -- vs. Ole Miss, 3-3-04

8. 5 -- at Oklahoma, 3-17-04

CAREER HIGHS

Points 13, vs. Southern, 11-21-03

Rebounds 9, vs. South Carolina, 3-12-04

Field Goals Made 5, three times

Field Goals Att. 7, twice

3 PT FG Made

3 PT FG Att.

Free Throws Made 3, three times

Free Throws Att. 4, twice

Assists 2, vs. Auburn, 3-6-04

Blocks 2, three times

Steals 2, vs. Southern, 2-4-04

Minutes Played 36, vs. Southern, 11-21-03

SOPHOMORE SEASON (2004-05)

Appeared in 25 games, averaging 6.9 minutes a game ... Hit 20-of-34 field goal attempts and averaged 2.0 points and 1.2 rebounds a game ... Had a high of nine points twice during the season -- vs. the University of New Orleans (11-24), hitting all three field goal and free throw attempts, and vs. Auburn on Feb. 9 when he made four-of-five field goal attempts ... Scored seven points in season opener vs. Tulane (11-19) ... Played double-figure minutes on seven occasions during the year ... Season high of seven rebounds vs. UNO (11-24).

FRESHMAN SEASON (2003-04)

Averaged just over 12 minutes a contest for the season, playing in all 29 games, starting eight ... All eight starts came in place of Jaime Lloreda, including the last five games of the season ... Started opener versus Southern (11-21), playing 36 minutes, hitting all five field goal attempts and scoring college best of 13 points ... Also had double figures off the bench against Auburn (2-18) with 10 points and 11 at Auburn (3-6) ... In the two games against Auburn, he was 10-of-14 from the field ... Had nine rebounds in the SEC Tournament game against South Carolina (3-12) ... Last five games when starting averaged over 20 minutes of playing time ... Hit 36-of-64 (56.3 percent) from the field, averaging 2.9 points per game and 2.4 rebounds ... In last five contests, he averaged just over five points and over four rebounds a game.

PRIOR TO LSU

Played for Coach Kenny Almond at Woodlawn ... Two-year member of the Louisiana Sports Writers Association All-State team, two-year member of The Advocate's All-Metro team and three-year all-district honoree ... Averaged 15 points and 10 rebounds his final year at Woodlawn ... Also participated in track at Woodlawn in the high jump and the triple jump ... Won back-to-back basketball state championships at Woodlawn his junior and senior seasons.

PERSONAL

Born on Jan. 29, 1985, in Lafayette, La. ... Parents are Kerry and Julie Lazare ... Other younger family members are Kerrylin, Braylon and Cameron ... Major is undecided ... Nickname is "Dee" ... Right-handed ... Chose his current number by flipping his high school number ... Chose LSU because he could "stay close to home" ... Favorite food is red beans and rice ... Favorite NBA team is the New Jersey Nets and favorite player Kevin Garnett ... Favorite athlete outside basketball is Atlanta Falcons running back and Baton Rouge native, Warrick Dunn ... Said biggest influence is his "mom, because she pushes me to limits beyond my imagination and makes me work hard."

LAZARE'S CAREER TOTALS

YEAR	GS-GS	MIN/AVG	FG-FGA	PCT.	3FG-3A	PCT.	FT-FTA	PCT.	REB.	AVG.	PF-FO	A	TO	BLK	STL	PTS-AVG.
03-04	29-8	357/12.3	36-64	.563	0-0	.000	13-25	.520	69	2.4	26-0	8	24	9	10	85-2.9
04-05	25-0	173/6.9	20-34	.588	0-0	.000	9-13	.692	30	1.2	20-0	2	5	6	4	49-2.0
Totals	54-8	530/9.8	56-98	.571	0-0	.000	22-38	.579	99	1.8	46-0	10	29	15	14	134-2.5

INTRO
THIS IS LSU
TIGERS
COACHES
REVIEW
PREVIEW
RECORDS
HISTORY
LSU
MEDIA



INTRO

THIS IS LSU

TIGERS

COACHES

REVIEW

PREVIEW

RECORDS

HISTORY

LSU

MEDIA

Lazare's Game-by-Game Totals

2004-05

Opponent	Min.	FG	3FG	FT	REB	PF-FO	A	TO	BLK	STL	PTS
Tulane	19	2-3	0-0	3-4	4	2-0	0	0	0	0	7
Louisiana-Lafayette	4	0-1	0-0	0-0	1	0-0	0	0	0	0	0
New Orleans	11	3-3	0-0	3-3	7	1-0	1	0	0	0	0
West Virginia	17	1-2	0-0	2-2	4	2-0	1	1	0	1	4
Northwestern State	8	2-2	0-0	0-1	1	1-0	0	0	2	0	4
McNeese State	4	0-0	0-0	0-0	0	2-0	0	1	0	0	0
vs. Southern Miss	5	2-3	0-0	0-0	0	1-0	0	0	1	0	4
at Houston	3	0-1	0-0	0-1	2	0-0	0	1	2	0	0
vs. Florida State	4	0-2	0-0	0-0	0	0-0	0	0	1	0	0
at Utah	2	0-0	0-0	0-0	1	1-0	0	0	0	0	0
at Alabama	3	0-0	0-0	0-0	0	0-0	0	0	0	0	0
South Carolina	4	0-0	0-0	0-0	0	0-0	0	0	0	0	0
Ohio State	10	0-0	0-0	0-0	2	1-0	0	0	0	1	0
Arkansas	12	0-2	0-0	0-0	1	0-0	0	0	0	1	0
at Kentucky	2	0-0	0-0	0-0	0	1-0	0	0	0	0	0
Mississippi State	5	1-1	0-0	0-0	0	0-0	0	0	0	0	2
at Georgia	8	2-3	0-0	0-0	1	0-0	0	0	0	0	4
at Tennessee	4	0-0	0-0	0-0	1	2-0	0	1	0	0	0
Auburn	17	4-5	0-0	1-1	3	0-0	0	0	0	0	9
at Arkansas	12	1-1	0-0	0-0	0	1-0	0	0	0	0	2
at Mississippi State	5	1-2	0-0	0-1	1	4-0	0	0	0	1	2
at Auburn	3	0-1	0-0	0-0	0	0-0	0	1	0	0	0
at Ole Miss	4	0-1	0-0	0-0	1	0-0	0	0	0	0	0
vs. Auburn	6	1-1	0-0	0-0	0	0-0	0	0	0	0	2
vs. UAB	1	0-0	0-0	0-0	0	1-0	0	0	0	0	0
Totals	173	20-34	0-0	9-13	30	20-0	2	5	6	4	49

2003-04

Opponent	Min.	FG	3FG	FT	REB	PF-FO	A	TO	BLK	STL	PTS
Southern	36	5-5	0-0	3-5	3	2-0	0	5	1	2	13
McNeese	6	1-2	0-0	0-0	3	1-0	0	1	0	0	2
Troy State	4	0-0	0-0	0-0	1	0-0	1	0	0	0	0
Louisiana-Monroe	13	3-3	0-0	2-3	3	2-0	1	3	1	1	8
Utah	8	1-1	0-0	0-0	2	0-0	0	0	0	0	2
Southern Miss	5	0-0	0-0	0-0	0	0-0	0	0	0	0	0
Tulane	13	2-2	0-0	0-1	1	1-0	1	0	0	1	4
UAB	8	2-3	0-0	1-2	2	0-0	0	2	0	1	5
at Houston	4	0-1	0-0	0-0	1	1-0	0	1	0	0	0
at Centenary	7	0-0	0-0	0-0	0	0-0	0	1	0	0	0
at Arkansas	6	1-2	0-0	0-0	1	0-0	0	0	0	1	2
Alabama	5	0-0	0-0	0-0	0	0-0	0	0	0	0	0
at New Orleans	15	0-1	0-0	0-0	4	2-0	0	1	0	1	0
Mississippi State	7	0-0	0-0	0-0	1	1-0	0	1	0	0	0
at Ole Miss	4	0-0	0-0	0-0	2	0-0	0	0	0	0	0
at South Carolina	13	0-1	0-0	2-2	4	0-0	1	0	0	0	2
Georgia	7	0-1	0-0	0-0	3	1-0	0	0	0	0	0
at Alabama	6	0-1	0-0	0-0	0	3-0	0	0	0	0	0
Tennessee	14	1-1	0-0	1-2	3	1-0	0	0	2	1	3
Arkansas	10	1-4	0-0	0-0	2	1-0	0	0	0	0	2
at Florida	8	1-1	0-0	0-2	1	0-0	1	0	0	0	2
Auburn	21	5-7	0-0	0-0	6	2-0	0	0	1	0	10
at Vanderbilt	26	1-4	0-0	1-2	4	2-0	0	1	1	1	3
at Mississippi State	3	0-0	0-0	0-0	0	2-0	0	0	0	0	0
Kentucky	21	1-3	0-0	0-0	2	1-0	1	1	1	1	2
Ole Miss	16	2-5	0-0	1-1	3	0-0	0	1	0	0	5
at Auburn	22	5-7	0-0	1-2	5	1-0	2	3	0	0	11
vs. South Carolina	25	2-5	0-0	0-2	9	1-0	0	1	1	0	4
at Oklahoma	24	2-4	0-0	1-1	3	1-0	0	2	1	0	5
Totals	357	36-64	0-0	13-25	69	26-0	8	24	9	10	85



6' 8 in.

6 ft.

5 ft.

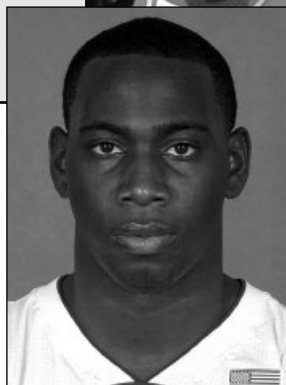
4 ft.

3 ft.

2 ft.

1 ft.



Tack **MINOR**

INTRO

THIS IS LSU

TIGERS

COACHES

REVIEW

PREVIEW

RECORDS

HISTORY

LSU

MEDIA

SOPHOMORE SEASON (2004-05)

Played and started all 30 games, averaging 10.8 points per game with 3.9 rebounds and 4.6 assists per game ... Continued a trend of starting point guards at LSU having more assists (137) than turnovers (108) ... Has hit 70 three-pointers in his first two seasons ... Had three double-doubles -- 10 points, 10 assists vs. New Orleans (11-24); 17 points and 10 assists in the double overtime win against Ohio State (1-15); and, the unusual for a point guard 16 points and 10 rebounds in the win over Alabama (2-22) ... 16 games scoring in double figures, 27 in his first two years ... Scored Career high of 23 points in the Nokia Sugar Bowl Classic win over Florida State in which he hit five treys (12-30) ... Also had nine assists in that game ... Had 10 games of six assists or more ... Assist average of 4.6 ranked fourth in the league ... Had 15 games playing at least 30 minutes.

FRESHMAN SEASON (2003-04)

Played in all 29 games, starting two, while averaging 15.5 minutes per game ... Fifth on the team in scoring, averaging 7.2 points, 1.9 rebounds and 1.7 assists per contest ... Starts came against McNeese (11-24) and Centenary (1-3) ... Played 20 minutes in five of the last nine games ... Scored in double figures in 11 games, topped by a 20-minute, 15-point effort against Auburn (2-18) ... In the game hit four three pointers to go with a perfect three-of-three at the line ... Also had 13 at Mississippi State (2-25) and 12 versus Louisiana-Monroe (11-29), Tulane (12-23) and Alabama (1-10) ... Hit three or more treys three times in the last month of the season ... Hit 32-of-95 (33.7 percent) from the three-point line ... Fourth among league freshmen in scoring average and three-point percentage ... Fifth among freshmen in free throw percentage (.680).

PRIOR TO LSU

Played for Coach Clarence Stubblefield ... Averaged 37 points, eight rebounds and eight assists after averaging over 30 points as a junior ... Had 72 points, 22 rebounds and 12 assists in a 120-118 double overtime win early in season ... Attracted attention from recruiters at the 2001 Nike All-Star Camp where he blended in well with other top talent, averaging 15 assists per game in the camp ... 2002 Postseason Prep All-American ... 2003 all-district first team, all-state and second team All-Houston ... Played in the Michael Jordan Capitol Classic in Washington, D. C., where he scored 13 points in 20 minutes ... Also played in the prestigious Olympic Festival games at Colorado Springs, Colo.

PERSONAL

Born on Feb. 8, 1984, in Houston ... Nickname is "Tack" ... First name is Taurean ... Parents are Margaret and Tommie Minor ... Other family members are: three sisters -- Kimiye, Myisha and Tonya and four brothers - Pat, Chris, Ced and Tony ... Listed his favorite hobby as "playing basketball" ... Majoring in General Studies ... Right-handed ... Biggest influence "my mother because she has been behind me 100 percent" ... Chose LSU after being recruited by such schools as Cincinnati, Oklahoma, Texas and Arizona ... Favorite NBA team is, of course, for the Houston product, the Houston Rockets ... Favorite basketball player is Steve Francis of the Rockets.

3

5-11 • 200 • Guard

Junior

Houston, Texas

B. T. Washington High

MINOR'S TOP 10 SCORING GAMES

1. 23 -- vs. Florida State, 12-30-04

2. 17 -- vs. West Virginia, 11-27-04

2. 17 -- vs. Southern Miss, 12-18-04

2. 17 -- vs. Ohio State, 1-15-05

2. 17 -- vs. Auburn, 2-9-05

6. 16 -- vs. Alabama, 2-12-05

7. 15 -- vs. Auburn, 2-18-04

7. 15 -- vs. UAB (NCAA), 3-17-05

9. 14 -- at Arkansas, 2-12-05

10. 13 -- at Mississippi State, 2-25-04

10. 13 -- vs. Tulane, 11-19-04

CAREER HIGHS**Points** 23, vs. Florida State, 12-30-04**Rebounds** 10, vs. Alabama, 2-22-05**Field Goals Made** 8, vs. Florida State, 12-30-04**Field Goals Att.** 18, vs. Florida State, 12-30-04**3 PT FG Made** 5, vs. Florida State, 12-30-04**3 PT FG Att.** 10, at Utah, 1-3-05**Free Throws Made** 7, vs. Northwestern St., 12-11-04**Free Throws Att.** 10, vs. Northwestern St., 12-11-04**Assists** 10, twice**Blocks** 1, three times**Steals** 4, at Auburn, 2-26-04**Minutes Played** 42, vs. Ohio State, 1-15-05**MINOR'S CAREER TOTALS**

YEAR	GS-GS	MIN/AVG	FG-FGA	PCT.	3FG-3A	PCT.	FT-FTA	PCT.	REB.	AVG.	PF-FO	A	TO	BLK	STL	PTS-AVG.
03-04	29-2	449/15.5	63-174	.362	32-95	.337	51-75	.680	55	1.9	47-1	49	55	0	21	209-7.2
04-05	30-30	857/28.6	114-304	.375	38-127	.299	58-86	.674	118	3.9	60-0	137	108	3	41	324-10.8
Totals	59-32	1306/22.1	177-478	.370	70-222	.315	109-161	.677	173	2.9	107-1	186	163	3	62	533-9.0

INTRO

THIS IS LSU

TIGERS

COACHES

REVIEW

PREVIEW

RECORDS

HISTORY

LSU

MEDIA

Minor's Game-by-Game Totals

2004-05

OPPONENT	MIN.	FG	3FG	FT	REB	PF-FO	A	TO	BLK	STL	PTS
Tulane	24	5-14	1-5	2-2	3	1-0	4	3	0	1	13
Louisiana-Lafayette	19	3-6	1-3	2-3	0	1-0	3	6	0	1	9
New Orleans	22	4-8	1-4	1-2	6	4-0	10	2	0	0	10
West Virginia	32	6-15	3-7	2-3	3	3-0	6	4	0	1	17
Northwestern State	30	2-6	1-3	7-10	1	3-0	8	6	0	0	12
McNeese State	23	3-9	0-4	3-4	5	1-0	3	3	0	0	9
vs. Southern Miss	40	5-9	3-6	4-5	6	3-0	5	5	1	2	17
at Houston	23	3-10	0-3	1-2	2	3-0	5	5	0	1	7
vs. Florida State	34	8-18	5-9	2-3	6	2-0	9	2	0	2	23
at Utah	29	5-14	2-10	0-1	3	4-0	4	1	0	3	12
at Alabama	29	2-7	2-3	3-4	5	2-0	5	6	0	0	9
South Carolina	30	3-8	0-3	1-1	2	1-0	6	4	0	3	7
Ohio State	42	5-9	1-3	6-6	3	2-0	10	6	0	2	17
Arkansas	32	1-11	0-4	2-3	2	2-0	6	3	0	0	4
at Kentucky	26	2-8	1-4	0-0	1	1-0	3	3	0	1	5
Ole Miss	28	4-12	0-4	4-4	3	2-0	2	4	0	3	12
Mississippi State	24	1-9	0-4	0-0	2	1-0	3	3	0	1	2
at Georgia	30	4-6	2-4	3-5	8	3-0	7	3	1	3	13
at Tennessee	22	2-12	0-3	0-0	6	1-0	3	1	0	0	4
Auburn	33	6-10	3-3	2-2	4	1-0	6	4	0	3	17
at Arkansas	23	6-10	2-3	0-1	3	1-0	1	2	0	0	14
at Mississippi State	36	4-10	2-5	1-3	5	3-0	7	4	0	2	11
Florida	24	1-8	0-4	4-4	2	4-0	3	1	0	0	6
Alabama	33	7-15	2-6	0-2	10	3-0	5	4	0	3	16
at Auburn	15	5-9	2-3	0-0	1	2-0	1	3	1	4	12
at Ole Miss	37	4-8	0-0	1-3	7	1-0	4	4	0	2	9
Vanderbilt	21	2-8	0-3	0-2	4	1-0	0	3	0	0	4
vs. Auburn	30	3-11	1-2	2-3	6	0-0	3	2	0	0	9
vs. Kentucky	35	4-13	0-4	1-3	4	2-0	3	4	0	1	9
vs. UAB	31	4-11	3-8	4-5	5	2-0	2	7	0	2	15
Totals	857	114-304	38-127	58-86	118	60-0	137	108	3	41	324

2003-04

OPPONENT	MIN.	FG	3FG	FT	REB	PF-FO	A	TO	BLK	STL	PTS
Southern	3	0-0	0-0	1-2	1	0-0	0	1	0	1	1
McNeese State	14	0-3	0-2	0-3	0	1-0	3	2	0	1	0
Troy State	12	1-4	1-3	1-2	3	1-0	1	1	0	1	4
Louisiana-Monroe	17	4-5	2-3	2-2	1	2-0	2	0	0	3	12
Utah	13	2-7	1-3	0-0	2	1-0	1	1	0	1	5
Southern Miss	12	1-5	0-3	1-2	1	2-0	1	3	0	1	3
Tulane	25	3-6	0-1	6-7	4	1-0	5	2	0	2	12
vs. UAB	19	4-9	1-2	2-2	3	3-0	3	1	0	0	11
at Houston	12	4-5	2-3	1-2	2	5-1	2	0	0	0	11
at Centenary	10	1-1	0-0	1-2	1	2-0	1	2	0	0	3
at Arkansas	9	2-4	2-4	3-4	0	1-0	0	2	0	1	9
Alabama	24	2-8	2-4	6-7	3	3-0	4	2	0	2	12
at New Orleans	12	2-6	1-2	2-4	0	1-0	0	1	0	0	7
Mississippi State	11	0-5	0-3	2-4	3	1-0	0	1	0	0	2
at Ole Miss	13	2-6	1-3	2-2	0	0-0	1	3	0	0	7
at South Carolina	16	2-5	1-3	1-3	1	4-0	2	5	0	0	6
Georgia	12	1-2	0-0	2-2	1	4-0	2	1	0	0	4
at Alabama	11	0-3	0-1	2-2	1	0-0	0	2	0	0	2
Tennessee	18	2-6	0-3	6-7	3	2-0	4	2	0	0	10
Arkansas	15	0-1	0-1	0-0	1	1-0	2	4	0	0	0
at Florida	22	4-7	2-4	0-0	3	2-0	2	2	0	0	10
Auburn	20	4-12	4-9	3-3	1	3-0	3	1	0	1	15
at Vanderbilt	20	3-12	2-7	1-2	5	0-0	1	2	0	0	9
at Mississippi State	18	4-11	3-7	2-2	2	1-0	1	3	0	1	13
Kentucky	16	1-5	0-4	4-4	4	1-0	1	1	0	1	6
Ole Miss	21	5-7	1-1	0-3	5	1-0	1	2	0	2	11
at Auburn	19	4-15	2-8	0-0	1	2-0	3	3	0	1	10
vs. South Carolina	21	2-8	1-7	0-2	1	1-0	2	1	0	1	5
at Oklahoma	14	3-6	3-4	0-0	2	1-0	1	4	0	1	9
Totals	449	63-174	32-95	51-75	55	47-1	49	55	0	21	209



6 ft.

5' 11 in.

5 ft.

4 ft.

3 ft.

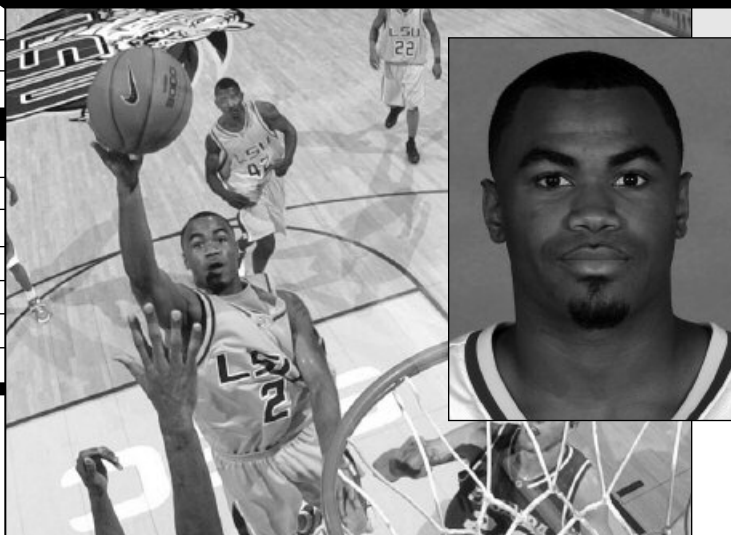
2 ft.

1 ft.





INTRO
THIS IS LSU
TIGERS
COACHES
REVIEW
PREVIEW
RECORDS
HISTORY
LSU
MEDIA



Darrel MITCHELL

- 2005 SEC Academic Honor Roll
- LSU Louisiana Classic All-Tournament
- LSWA Player of the Week, 1/18/05
- 2004 Third Team All-Louisiana

22

5-11 • 178 • Guard
Senior • 3VL
St. Martinville, La.
St. Martinville HS

MITCHELL'S TOP 10 SCORING GAMES

1. 32 -- vs. Ohio State, 1-15-05
2. 22 -- vs. Tennessee, 2-4-04
3. 20 -- vs. Mississippi State, 1-29-05
3. 20 -- vs. Northwestern State, 12-11-04
3. 20 -- vs. UNO, 11-24-04
6. 19 -- vs. South Carolina, 2-5-03
6. 19 -- vs. Tulane, 12-23-03
6. 19 -- vs. Alabama, 1-10-04
9. 18 -- vs. South Carolina, 1-12-05
9. 18 -- vs. Florida, 2-14-04
9. 18 -- at Auburn, 3-6-04

CAREER HIGHS

Points	32, vs. Ohio State, 1-15-05
Rebounds	7, vs. Southern, 11-21-03
Field Goals Made	8, twice
Field Goals Att.	17, vs. Tulane, 12-23-03
3 PT FG Made	6, twice
3 PT FG Att.	9, five times
Free Throws Made	12, vs. Ohio State, 1-15-05
Free Throws Att.	13, vs. Ohio State, 1-15-05
Assists	8, vs. Tennessee, 2-4-04
Blocks	2, vs. Ole Miss, 3-3-04
Steals	4, four times
Minutes Played	46, vs. Ohio State, 1-15-05

JUNIOR SEASON (2004-05)

Mitchell had his best scoring season as a Tiger as he started all 30 games, averaging 13.1 points per game, 2.6 rebounds and 2.9 assists ... Mitchell in one two game stretch against South Carolina (1-12) and Ohio State (1-15) scored a combined 50 points (18 vs. South Carolina, a career high 32 against Ohio State) ... In the two games, Mitchell played 84 minutes, hit 14-of-24 field goals, including 9-of-15 treys and 13-of-15 at the free throw line ... In the Ohio State win, he became the 34th LSU player since 1967 to score at least 30 in one game ... Had four 20-plus point games, including 20 in the win over nationally-ranked Mississippi State (1-29) ... Made 67 treys for the second straight year, equaling the eighth-most for a single season at LSU and he enters his senior year having made 176 treys, 61 short of the school record ... He also enters his senior year 35 points shy of becoming the next LSU player to score 1,000 career points ... Finished the year 19th in the league in scoring, third in free throw percentage (77-of-91, 84.6 percent), ninth in 3-point FGs made per game (2.23) and sixth in steals (1.80 spg) ... Had an assist to turnover ratio of 1.4 ... 21 games in double figures, 52 for his career.

SOPHOMORE SEASON (2003-04)

Started 17-of-29 games, including the last 12 ... Averaged 30.5 minutes per game, 11.9 points per game, 2.8 rebounds, 2.2 assists, 1.7 steals per game ... After shooting 42.4 percent from the three-point arc as a freshman, came back to shoot 41.9 percent as a sophomore with 61 more attempts ... Made 67 treys, eighth best in a single season at LSU and his 109 career goals makes him one of just 10 players at LSU to have made 100 career treys ... In his 12 starts to close the season, had nine double-figure scoring games and made 37 treys ... Against Tennessee (2-4), a lot of his numbers represented career totals, hitting eight-of-11 field-goal attempts, including six-of-nine treys (a career number for makes) as part of a career scoring night of 22 points ... To make the night even better, Mitchell had eight assists and no turnovers ... 20 double-figure scoring games ... Eighth in the league in steals average ... Second in the league in three-point field goal percentage (67-of-160, 41.9 percent) ... 19th in the league in conference game scoring at 13.2 ppg ... Led the SEC in the 16-game league schedule from the arc, hitting 47.9 percent, 45-of-94.

FRESHMAN SEASON (2002-03)

Mitchell finished his first season at LSU by playing in all 32 games, averaging 7.0 ppg and 2.2 rpg along with 1.8 assists and 1.4 steals ... Came off the bench in all games to still average 19.8 minutes per game ... Hit 42.4 percent of his three-point attempts (42-of-99) and 73.2 percent from the free-throw line ... Scoring average finished eighth in the league among freshmen ... In the Auburn game (2-26), he helped pace LSU's 16 three-pointers, tying the school record, hitting five-of-five from outside the arc ... Helped LSU conclude an 8-8 season in the league by hitting all three three-point attempts in the March 8 regular season finale against Alabama ... Had 11

MITCHELL'S CAREER TOTALS

YEAR	GS-GS	MIN/AVG	FG-FGA	PCT.	3FG-3A	PCT.	FT-FTA	PCT.	REB.	AVG.	PF-FO	A	TO	BLK	STL	PTS-AVG.
02-03	32-0	635/19.8	71-172	.413	42-99	.424	41-56	.732	70	2.2	67-1	56	39	6	45	225/7.0
03-04	29-17	884/30.5	115-279	.412	67-160	.419	49-69	.710	81	2.8	73-1	63	41	3	50	346/11.9
04-05	30-30	1050/35.0	125-312	.401	67-184	.364	77-91	.846	79	2.6	83-1	88	65	5	54	394/13.1
Totals	91-47	2569/28.2	311-763	.408	176-443	.397	167-216	.773	230	2.5	223-3	207	145	14	149	965/10.6

INTRO

THIS IS LSU

TIGERS

COACHES

REVIEW

PREVIEW

RECORDS

HISTORY

LSU

MEDIA



games in double figures with best efforts of 19 in the Auburn win (2-26) and six games with 12 points (McNeese State (12-7), Prairie View (12-17), Tulane (12-28), Mississippi State (1-11), Ole Miss (1-18) and South Carolina (2-5)) ... Played 20 or more minutes in 20 games ... Best rebounding game was six in opener against Nicholls State (11-22) ... Had seven assists at Alabama (2-1) ... Only failed to score twice (Delaware State (12-3), Florida (1-28)).

PRIOR TO LSU

Named Mr. Basketball by the Louisiana Sports Writers Association after the 2001-02 season ... Helped his St. Martinville team to the 2002 Class 4A State Championship ... Coached by his father, Darrel Mitchell, Sr. ... Both chosen to participate as player-coach in the state high school all-star game played in July 2002 at the Maravich Center ... Scored more than 2,000 career points ... Averaged 24.6 points per game his senior season, 3.3 assists, 2.9

steals and 3.1 rebounds per game ... Also was a long jumper on the track team and a backup quarterback on the football team ... St. Martinville basketball team won District Championships in 2001 and 2002 ... Named the Gatorade Player of the Year, LHSAA all-state, Top 28 MVP, District MVP and Class 4A MVP.

PERSONAL

Full name is Darrel Joseph Mitchell, Jr. ... Born on May 3, 1984, in New Iberia, La. ... Right-handed ... Honor graduate at St. Martinville ... Parents are Darrel Joseph Mitchell, Sr., and Valarie Mitchell ... One younger brother, Jelani, and one older sister, Kristy ... In choosing LSU said he "liked the togetherness and relationship of players and coaches. It was just like my high school team." ... Majoring in kinesiology ... Favorite foods are pizza and burgers ... Favorite actors include Adam Sandler, Wesley Snipes and Martin Lawrence.

INTRO

THIS IS LSU

TIGERS

COACHES

REVIEW

PREVIEW

RECORDS

HISTORY

LSU

MEDIA

Mitchell's Game-by-Game Totals

2004-05

OPPONENT	MIN.	FG	3FG	FT	REB	PF-FO	A	TO	BLK	STL	PTS
Tulane	26	3-9	2-4	1-2	4	3-0	2	1	0	1	9
Louisiana-Lafayette	30	3-12	1-6	5-6	1	3-0	4	5	0	7	12
New Orleans	36	6-9	4-6	4-4	4	4-0	3	1	0	3	20
West Virginia	37	3-10	3-9	5-5	2	3-0	3	3	0	0	14
Northwestern State	30	4-11	4-9	8-9	2	5-1	5	1	0	2	20
McNeese State	31	3-7	3-6	0-2	1	3-0	1	0	0	1	9
vs. Southern Miss	45	6-15	2-8	0-0	2	3-0	3	1	0	3	14
at Houston	34	3-7	1-5	0-0	2	3-0	2	6	0	1	7
vs. Florida State	35	3-10	1-4	0-0	3	2-0	4	2	0	3	7
at Utah	33	3-10	2-7	0-0	1	3-0	4	0	0	0	8
at Alabama	32	4-8	3-5	0-0	2	4-0	0	2	0	1	11
South Carolina	38	6-11	5-8	1-2	1	2-0	4	2	0	0	18
Ohio State	46	8-13	4-7	12-13	2	4-0	3	1	0	3	32
Arkansas	33	3-9	1-5	0-0	2	4-0	1	2	0	3	7
at Kentucky	35	4-14	2-9	0-0	4	1-0	4	5	0	0	10
Ole Miss	37	5-10	1-4	5-5	3	2-0	1	5	0	3	16
Mississippi State	39	6-12	3-7	5-5	3	3-0	7	2	0	2	20
at Georgia	34	6-12	3-8	2-3	3	4-0	3	1	1	1	17
at Tennessee	36	1-8	0-2	2-2	3	2-0	2	1	0	2	4
Auburn	32	6-13	2-4	3-3	3	1-0	4	0	0	2	17
at Arkansas	35	5-12	2-8	0-1	1	1-0	1	2	0	1	12
at Mississippi State	37	2-8	0-4	4-7	1	2-0	2	3	0	4	8
Florida	38	4-9	0-4	7-7	3	2-0	2	1	0	0	15
Alabama	37	4-10	3-5	2-2	5	3-0	2	3	1	1	13
at Auburn	38	5-14	3-8	0-0	6	1-0	7	1	0	4	13
at Ole Miss	34	6-10	4-5	0-1	4	2-0	1	0	0	2	16
Vanderbilt	34	3-7	3-6	7-8	2	4-0	6	3	0	2	16
vs. Auburn	29	4-7	3-5	2-2	2	2-0	2	3	1	2	13
vs. Kentucky	40	5-11	2-7	2-2	3	3-0	1	5	0	0	14
vs. UAB	29	1-14	0-9	0-0	4	4-0	4	3	2	0	2
Totals	1050	125-312	67-184	77-91	79	83-1	88	65	5	54	394

2003-04

OPPONENT	MIN.	FG	3FG	FT	REB	PF-FO	A	TO	BLK	STL	PTS
Southern	26	1-8	0-2	1-5	7	2-0	2	2	0	0	3
McNeese State	28	6-10	3-6	1-1	4	4-0	3	1	0	2	16
Troy State	19	3-5	2-4	5-6	4	5-1	3	2	0	1	13
Louisiana-Monroe	26	4-7	2-3	3-5	4	3-0	4	0	0	3	13
Utah	28	5-8	0-1	3-6	6	2-0	1	0	0	3	13
Southern Miss	18	3-8	0-4	1-1	1	4-0	1	1	0	1	7
Tulane	40	7-17	4-8	1-2	3	0-0	3	1	1	2	19
vs. UAB	33	5-15	2-8	0-0	2	4-0	5	1	0	1	12
at Houston	35	1-9	1-7	0-0	3	3-0	1	0	0	0	3
at Centenary	39	3-9	1-5	0-0	1	4-0	3	1	0	3	7
at Arkansas	29	5-10	1-3	2-2	3	1-0	0	2	0	2	13
Alabama	26	5-9	4-6	5-8	5	3-0	2	3	0	1	19
at New Orleans	26	3-6	3-5	0-0	4	1-0	2	3	0	2	9
Mississippi State	30	4-9	2-7	0-0	2	2-0	1	1	0	3	10
at Ole Miss	17	0-4	0-4	1-2	1	0-0	1	1	0	1	1
at South Carolina	27	4-8	3-6	0-0	2	4-0	0	3	0	3	11
Georgia	25	2-5	2-3	6-7	2	3-0	2	3	0	2	12
at Alabama	36	2-8	1-3	4-4	2	1-0	3	2	0	3	9
Tennessee	37	8-11	6-9	0-0	1	2-0	8	0	0	2	22
Arkansas	30	4-8	3-4	4-4	3	3-0	2	0	0	1	15
at Florida	38	6-9	4-6	2-3	1	1-0	1	1	0	2	18
Auburn	40	2-12	2-7	2-2	1	2-0	2	2	0	2	8
at Vanderbilt	34	5-12	2-6	0-0	4	2-0	4	1	0	2	12
at Mississippi State	33	5-11	4-8	0-1	0	3-0	0	1	0	0	14
Kentucky	36	4-11	4-8	3-3	2	4-0	3	4	0	1	15
Ole Miss	32	4-12	1-5	5-6	3	3-0	4	0	2	2	14
at Auburn	33	6-13	6-9	0-1	4	1-0	0	2	0	2	18
vs. South Carolina	25	3-10	2-7	0-0	2	3-0	1	1	0	1	8
at Oklahoma	38	5-15	2-6	0-0	4	3-0	1	2	0	2	12
Totals	884	115-279	67-160	49-69	81	73-1	63	41	3	50	346

2002-03

OPPONENT	MIN.	FG	3FG	FT	REB	PF-FO	A	TO	BLK	STL	PTS
Nicholls State	17	2-7	2-4	2-4	6	1-0	1	0	0	1	8
South Alabama	24	2-4	1-1	2-3	5	4-0	1	4	1	4	7
vs. Texas A&M	14	4-5	3-4	0-0	4	2-0	1	1	0	2	11
Delaware State	12	0-4	0-2	0-0	0	2-0	1	0	0	0	0
McNeese State	23	5-9	1-2	1-1	2	2-0	3	2	1	0	12
Texas A&M-CC	18	2-3	2-3	0-0	1	3-0	5	4	0	0	6
Prairie View	20	4-7	3-5	1-2	3	0-0	4	0	1	2	12
Arizona	23	2-7	0-1	0-0	1	4-0	1	1	0	1	4
Tulane	21	4-9	4-7	0-0	3	2-0	1	1	0	4	12
New Orleans	21	2-6	0-3	4-4	3	3-0	1	1	0	2	8
at Georgia	20	2-7	2-5	0-0	2	2-0	0	0	0	2	6
Houston	17	1-5	1-3	0-0	3	1-0	1	1	1	3	3
Mississippi State	22	3-4	2-3	4-6	2	2-0	0	2	0	3	12
Centenary	14	4-5	1-2	0-0	0	1-0	2	0	0	3	9
Ole Miss	21	3-6	1-2	5-6	2	2-0	0	3	0	0	12
at Arkansas	22	0-3	0-2	3-4	1	2-0	0	0	0	1	3
at Mississippi State	25	4-7	2-4	0-2	1	2-0	2	0	0	0	10
Florida	18	0-6	0-4	0-0	1	4-0	0	3	0	0	0
at Alabama	28	2-8	2-7	4-5	5	3-0	7	2	0	3	10
South Carolina	29	4-7	1-3	3-4	3	1-0	3	4	0	2	12
at Auburn	26	1-7	1-4	0-0	3	2-0	2	0	1	0	3
Vanderbilt	13	1-4	1-2	0-0	0	0-0	1	1	0	1	3
at Kentucky	14	1-3	1-3	1-1	0	5-1	1	1	0	1	4
Arkansas	17	1-1	0-0	4-4	1	2-0	1	0	0	1	6
Auburn	22	6-7	5-5	2-2	2	1-0	4	0	0	3	19
at Tennessee	11	1-5	0-2	0-0	2	1-0	4	1	0	1	2
at Ole Miss	18	0-3	0-2	2-4	4	2-0	2	2	0	2	2
Alabama	26	4-6	3-3	0-0	2	2-0	2	0	0	0	11
Arkansas	22	3-5	2-4	1-2	2	1-0	1	0	0	0	9
Florida	21	1-4	0-2	0-0	3	4-0	3	1	0	1	2
Mississippi State	17	1-4	0-1	2-2	2	2-0	1	0	1	0	4
Purdue	19	1-4	1-4	0-0	1	2-1	0	4	0	2	3
Totals	635	71-172	42-99	41-56	70	67-1	56	39	6	45	222

6 ft.

5' 11 in.

5 ft.

4 ft.

3 ft.

2 ft.

1 ft.



Garrett **TEMPLE**

REDSHIRT FRESHMAN SEASON (2004-05)

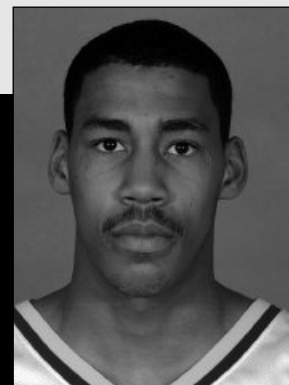
Was redshirted during the 2004-05 season, but practiced daily with the Tiger team helping prepare the team for games and work on his game ... Third member of the Temple family to play basketball at LSU, joining his father (Collis, Jr., 1971-74), and his older brother (Collis III, 1999-03), who both starred for the Tigers during their playing days.

PRIOR TO LSU

Participated in basketball and track at University High School in Baton Rouge ... In track was a long jump and triple jump specialist ... High school basketball coach was former LSU basketball assistant Ari Fisher ... Averaged 13.9 points, 7.4 rebounds and 5.5 assists in leading University High to the Class 2A state championship in 2004 ... Team also won the 2002 championship in classification and was a state semifinalist in 2003 ... Averaged over 14 points for his career ... Team was undefeated in district three seasons ... Two-time first-team All-District, second-team All-State and was a member of the All-Metro team and the Top 28 All-Tourney team.

PERSONAL

Born in Baton Rouge on May 8, 1986 ... Right-handed ... Full name is Garrett Bartholomew Temple ... Parents are Collis Temple and Soundra Johnson Temple ... Father was the first African-American to play basketball at LSU ... Will wear 14, swapping the number 41 his dad and brother wore at LSU ... Two older brothers, Collis III and Elliott ... Hobbies include listening to music ... Listed his biggest influence as "his father, because he went through it and knows the ropes" ... Favorite food is gumbo ... Planning toward business administration major ... Lists his favorite NBA team as "which ever team Shaq (Shaquille O'Neal) plays for," these days, the Miami Heat.



14

6-5 • 176 • Guard
Freshman • RS
Baton Rouge, La.
University HS

INTRO
THIS IS LSU
TIGERS
COACHES
REVIEW
PREVIEW
RECORDS
HISTORY
LSU
MEDIA

Tyrus **THOMAS**

Granted a medical redshirt after suffering a neck injury in the preseason practices ... Aggravated the injury in his only appearance, a preseason exhibition game ... Tremendous athletic ability.

REDSHIRT FRESHMAN SEASON (2004-05)

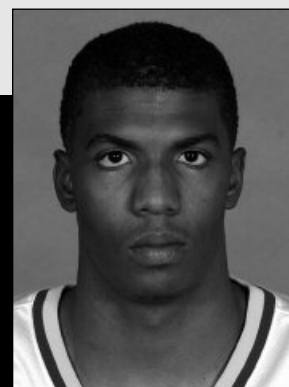
Out for much of the early part of the year with neck problem ... Was able to practice with the team during the second part of the year.

PRIOR TO LSU

Played basketball for coach Chauncey Moore at McKinley, averaging 16 points, 12 rebounds and six blocks per game ... Honored as the defensive MVP in the local District 7-4A ... All-Metro and second-team All-State in Class 4A.

PERSONAL

Born in Baton Rouge on August 17, 1986 ... Full name is Tyrus Wayne Thomas ... Right-handed ... Mother is Jessica Johnson ... One brother, Travis, and one sister, Brandy ... Nickname is T-Time ... Number chosen for LSU is one he wore in second through eighth grade ... Favorite music is hip hop and rhythm and blues ... Favorite food is fried fish and potato salad ... Planning towards sports management major ... Favorite NBA team is Philadelphia 76ers and favorite player is Tracy McGrady.



12

6-9 • 215 • Forward
Freshman
Baton Rouge, La.
McKinley HS

INTRO

THIS IS LSU

TIGERS

COACHES

REVIEW

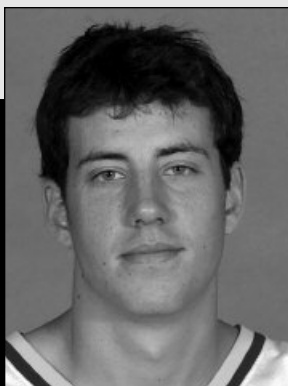
PREVIEW

RECORDS

HISTORY

LSU

MEDIA



30

6-5 • 205 • Guard/Forward
Freshman
Phoenix, Ariz.
St. Mary's HS

Alex **FARRER**

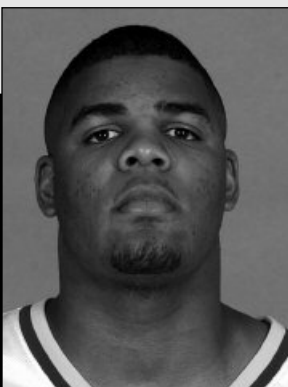
Signed with the Tigers in the late signing period, giving LSU added depth at guard and small forward.

PRIOR TO LSU

Farrer averaged 17.5 points, 9.2 rebounds and three blocked shots a game for a St. Mary's team that was 24-7 and advanced to the Arizona Class 5A state championship game ... Also played first base for the baseball team ... Second team all-region as a junior and first team all-region as a senior ... All-state honorable mention as a senior.

PERSONAL

Born on Dec. 10, 1986 in Phoenix ... Full name is Alex Joseph Farrer ... Parents are Robert and Pam Farrer ... Dad played college basketball ... Two older brothers, Andrew and Rob, and one older sister, Julie ... Planning towards business administration major ... Chose LSU "because the campus was nice, the coaches are good and we have a chance to win a championship." ... Favorite food is Mexican while favorite actors are Denzel Washington and Jamie Foxx ... Favorite NBA team is Houston and favorite player is NBA rookie Chris Paul of the Hornets.



44

6-9 • 268 • Forward
Junior
Baton Rouge, La.
San Jacinto College

Kentrell **GRANSBERRY**

Played at Woodlawn High School with Darnell Lazare ... One of the nation's top junior college rebounders.

PRIOR TO LSU

Earned first-team all-region honors after averaging 11.1 points a game, 13.7 rebounds (best in JC) and had 86 blocked shots ... Team spent much of the year ranked No. 1 in the country and finished with a 31-3 record ... Known more for rebounding and defense ... Played for San Jacinto coach Scott Gernander ... Averaged 11.3 points per game and 12.6 rebounds as a freshman ... 12 double-doubles, earning second-team all-region honors.

PERSONAL

Born on Aug. 1, 1985 in Baton Rouge ... Right-handed ... Mother is Delores Gransberry ... Two sisters ... Major is general studies ... Kenny Almond was his high school coach at Woodlawn High School in Baton Rouge, where he teamed with Tiger Darnell Lazare ... Enjoys going to the movies ... Favorite NBA player is Tracy McGrady.

Chris **JOHNSON**

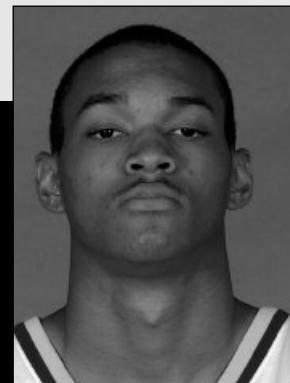
One of two early signees this past season from the highly regarded North Carolina prep school.

PRIOR TO LSU

Part of a 40-0 prep school national championship team ... Averaged 8.6 points, 3.9 rebounds and 2.7 blocks a game this past season and shot 42 percent from three-point range ... Coached by Chris Chaney ... At Colonial Beach High School average 22.2 points per game his final season with 12.5 rebounds.

PERSONAL

Born on July 17, 1985, in Washington, D.C. ... Mother is the late Sandra L. Johnson ... One brother, Joe Posey.



21

6-11 • 190 • Forward
Freshman
Washington, D.C.
Laurinburg (NC) Institute

INTRO

THIS IS LSU

TIGERS

COACHES

REVIEW

PREVIEW

RECORDS

HISTORY

LSU

MEDIA

Dameon **MASON**

Signed with LSU in the spring signing period, transferring after two seasons at Marquette University ... Will redshirt the 2005-06 season and have two seasons of eligibility beginning with the 2006-07 season.

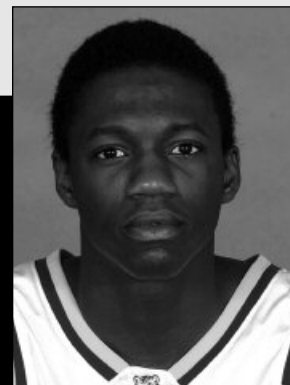
PRIOR TO LSU

At Marquette: Started 28-of-31 games, averaging 30.4 minutes a contest, 11.9 points per game and 5.6 rebounds per game as a sophomore ... Scored a career-high 26 points at Oakland and had a double-double with 10 rebounds ... Had his other double-double earlier in the season when he had 22 points and a season-best 13 rebounds in win over Sam Houston State ... Averaged 9.0 points and 4.5 rebounds during his freshman campaign ... Career average at Marquette in 61 games (44 starts) of 10.4 points per game ... Started the final 17 games of his freshman year ... Named Marquette's Most Improved Player after his freshman season and a member of Conference USA's All-Freshman team

West Aurora HS (Ill.): Played two seasons under Gordie Kerkman ... Averaged 20.9 points and 60 percent from the field his senior season ... Second in the voting for the 2002-03 Illinois Mr. Basketball Award ... Two-time player of the year in the DuPage Valley Conference and was a first-team all-state selection as a junior and senior ... Averaged 23.0 points and 9.0 rebounds as a junior.

PERSONAL

Born on March 1, 1985 ... Parents are Brad and Pam Mason ... Lists reading and listening to music as hobbies ... Presently undecided on a major.



2

6-5 • 190 • Guard
Junior • Transfer
Kansas City, Mo.
Marquette

INTRO

THIS IS LSU

TIGERS

COACHES

REVIEW

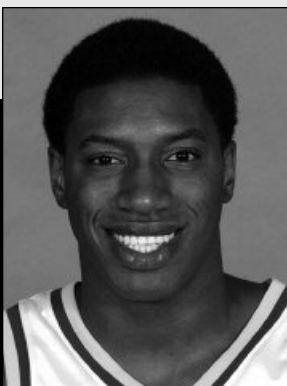
PREVIEW

RECORDS

HISTORY

LSU

MEDIA



1

6-7 • 230 • Forward
Freshman
Denham Springs, La.
Denham Springs HS

Tasmin MITCHELL

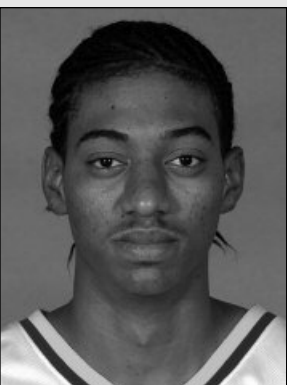
A highly-recruited McDonald's All-American, signed with LSU in the early signing period after an All-American career at nearby Denham Springs High School.

PRIOR TO LSU

Played center at Denham Springs for coach Paul Smith ... Averaged 26.9 points per game, 10 rebounds, six assists, 3.5 blocks and 2.3 steals ... Was named the Class 5A state Player of the Year, Mr. Basketball and a high school All-American by McDonald's, Parade Magazine and EA Sports ... Rated 20th best high school senior of 2005 by recruiting website www.rival-shoops.com ... Two-time prep All-American, four-time first-team Class 5A All-State, four-time first-team all-district, four-time Parish MVP, Louisiana Gatorade Circle of Champions Player of the Year.

PERSONAL

Born in Baton Rouge on June 25, 1986 ... Full name is Tasmin Olajuwon Mitchell ... Mother is Collette Mitchell, whom Tasmin cites as his biggest influence because "she always encouraged me to do my best." ... Majoring in sports management ... Godfather is LSU Associate Head Coach Butch Pierre ... Chose LSU because, "it's close to home, the environment, coaches, fans and education." ... Not surprisingly favorite foods are red beans and sweet potato pie ... Favorite NBA team is the Miami Heat.



15

6-9 • 215 • Forward
Freshman
Freeport, Bahamas
Laurinburg (NC) Prep

Magnum ROLLE

One of two signees coming to LSU from this prep school power, giving LSU three players in the last few years from the school.

PRIOR TO LSU

Averaged 10.1 points per game, 10.2 rebounds and 4.5 blocked shots per game ... Shot 64 percent from the field and 76 percent from the free-throw line ... Team was 40-0 and won the national school championship ... Coach was Chris Chaney ... Played in the Michael Jordan Classic in the spring of 2005 ... Listed as No. 18 on the rivals.com list of top players ... Also participated in track and field at St. George's High School where he averaged in basketball 20.3 points per game and 13.6 rebounds.

PERSONAL

Born on Feb. 23, 1986, in Freeport, Bahamas ... Mom is Maryse Rolle ... One sister, Gretel ... Feels that LSU and Baton Rouge's warm climate "remind me of home" ... His biggest influence athletically, was his coach in high school, Darrell Sears because "he taught me to be a man and take care of family and my business ... Favorite singers are Mariah Carey and Mary J. Blige ... Favorite NBA team is the Miami Heat and his favorite athlete outside basketball is seven-time Tour de France winner, Lance Armstrong.

Ben VOOGD

Seen by John Brady and Butch Pierre in summer of 2004, committed after official visit to Baton Rouge and signed during early signing period.

PRIOR TO LSU

Known as more of a scorer in his junior season on a young high school team, asked to play a more traditional point guard roll his senior campaign ... Averaged 26.3 points a game as a junior and 18 points as a senior, but more importantly, averaged 8.5 assists and 7.1 rebounds ... Siuslaw, under coach Bob McBeth, won a conference championship and advanced to the Oregon Class 3A quarterfinals ... Four times all-league, three-times all-state.

PERSONAL

Born in Oakland, Calif., on Oct. 1, 1986 ... Full name is Bernard Fredrick Voogd ... Parents are Harry and Karen Voogd ... Two sisters, Melissa and Stacie ... Favorite basketball player is Jason Kidd ... Undecided on a major.



4

6-1 • 175 • Guard
Freshman
Florence, Ore.
Siuslaw HS

INTRO

THIS IS LSU

TIGERS

COACHES

REVIEW

PREVIEW

RECORDS

HISTORY

LSU

MEDIA

Returning Players Stats vs. 2005-06 Opponents**Glen Davis**

OPPONENT	G	FG	3FG	FT	REB	AST.	PTS
Alabama	2	9-21	0-1	5-8	10	2	23
Arkansas	2	12-20	0-1	13-16	25	3	37
Auburn	3	20-24	1-1	12-19	20	5	53
Georgia	1	3-6	0-0	6-7	11	2	12
Florida	1	3-5	0-0	5-6	8	0	11
Houston	1	1-5	0-0	6-8	6	1	8
Kentucky	2	5-16	0-0	10-17	22	0	20
Louisiana-Lafayette	1	1-6	0-0	1-2	13	2	3
McNeese State	1	6-9	0-0	3-6	7	2	15
Ole Miss	2	6-14	0-1	9-10	18	2	21
Mississippi State	2	9-18	0-0	4-8	17	5	22
New Orleans	1	6-9	0-1	4-6	5	0	16
Ohio State	1	7-16	0-2	1-1	11	3	15
South Carolina	1	12-17	1-1	3-4	14	0	28
Tennessee	1	5-9	0-0	7-9	13	1	17
Tulane	1	4-6	0-0	8-11	13	0	16
Vanderbilt	1	5-10	0-0	3-8	5	1	13
West Virginia	1	1-7	0-0	6-8	8	0	8

David Fleshman

OPPONENT	G	FG	3FG	FT	REB	AST.	PTS
Tulane	1	0-0	0-0	0-0	0	0	0
New Orleans	1	0-1	0-0	0-0	0	0	0

Darnell Lazare

OPPONENT	G	FG	3FG	FT	REB	AST.	PTS
Alabama	3	0-1	0-0	0-0	3	0	0
Arkansas	4	3-9	0-0	0-0	4	0	6
Auburn	4	14-20	0-0	2-3	14	2	30
Florida	1	1-1	0-0	0-2	1	1	2
Georgia	2	2-4	0-0	0-0	4	0	4
Houston	2	0-2	0-0	0-1	3	0	0
Kentucky	2	1-3	0-0	0-0	2	1	2
Louisiana-Lafayette	1	0-1	0-0	0-0	1	0	0
McNeese State	1	1-2	0-0	0-0	3	0	2
Ole Miss	3	2-6	0-0	1-1	6	0	5
Mississippi State	4	2-3	0-0	0-1	2	0	4
New Orleans	1	3-3	0-0	3-3	7	1	9
Ohio State	1	0-0	0-0	0-0	2	0	0
South Carolina	3	2-6	0-0	2-4	3	1	6
Southern	1	5-5	0-0	3-5	3	0	13
Tennessee	2	1-1	0-0	1-2	4	0	3
Tulane	2	4-5	0-0	3-5	5	1	11
Vandy	1	1-4	0-0	1-2	4	0	3
West Virginia	1	1-2	0-0	2-2	4	1	4

Darrel Mitchell

OPPONENT	G	FG	3FG	FT	REB	AST.	PTS
Alabama	6	21-49	16-29	15-19	21	16	73
Arkansas	7	21-48	9-26	14-17	13	6	65
Auburn	7	30-73	22-42	9-10	21	21	91
Florida	4	11-28	4-16	9-10	8	6	35
Georgia	3	10-24	7-18	8-10	7	5	35
Houston	3	5-21	3-15	0-0	8	4	13
Kentucky	4	14-39	9-27	6-6	9	9	43
Louisiana-Lafayette	1	3-12	1-6	5-6	1	4	12
McNeese State	3	14-26	7-14	2-4	7	7	37
Ole Miss	6	18-45	7-22	18-24	17	9	61
Mississippi State	6	20-49	10-30	15-23	12	7	61
New Orleans	3	11-21	7-14	8-8	7	8	37
Nicholls State	1	2-7	2-4	2-4	6	1	8
South Carolina	4	17-36	11-24	4-6	8	8	49
Southern	1	1-8	0-2	1-5	7	2	3
Tennessee	3	10-24	6-13	2-2	6	14	28
Tulane	3	14-35	10-19	2-4	10	6	40
Vanderbilt	3	9-23	6-14	7-8	6	11	31
West Virginia	1	3-10	3-9	5-5	2	3	14

Tack Minor

OPPONENT	G	FG	3FG	FT	REB	AST.	PTS
Alabama	4	11-33	6-14	11-15	19	14	39
Arkansas	4	9-26	4-12	5-8	6	9	27
Auburn	5	22-57	12-25	7-8	13	16	65
Florida	2	5-15	2-8	4-4	5	5	16
Georgia	2	5-8	2-4	5-7	9	9	17
Houston	2	7-15	2-8	2-4	4	7	18
Kentucky	2	3-13	1-8	4-4	5	4	11
Louisiana-Lafayette	1	3-6	13-	2-3	0	3	9
McNeese State	2	3-12	0-6	3-7	5	6	9
Ole Miss	4	15-33	2-8	7-12	15	8	39
Mississippi State	4	9-35	5-19	5-9	12	11	28
New Orleans	2	6-14	2-6	3-6	6	10	17
Ohio State	1	5-9	1-3	6-6	3	10	17
South Carolina	3	7-21	2-13	2-6	4	10	18
Tennessee	2	4-18	0-6	6-7	9	7	14
Tulane	2	8-20	1-6	8-9	7	9	25
Vanderbilt	2	5-20	2-10	1-4	9	4	13
West Virginia	1	6-15	3-7	2-3	3	6	17

INTRO

THIS IS LSU

TIGERS

COACHES

REVIEW

PREVIEW

RECORDS

HISTORY

LSU

MEDIA



0

Glen Davis

6-9 • 310 • So. • Forward
Baton Rouge, La.



1

Tasmin Mitchell

6-7 • 230 • Fr. • Forward
Denham Springs, La.



2

Dameon Mason

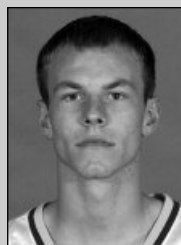
6-5 • 190 • Jr./RS • Guard
Kansas City, Mo.



3

Tack Minor

5-11 • 200 • Jr. • Guard
Houston, Texas



4

Ben Voogd

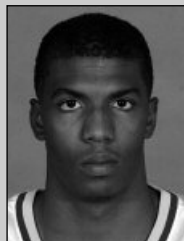
6-1 • 175 • Fr. • Guard
Florence, Ore.



10

David Fleshman

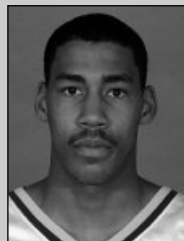
6-0 • 184 • So. • Guard
Baton Rouge, La.



12

Tyrus Thomas

6-9 • 215 • Fr. • Forward
Baton Rouge, La.



14

Garrett Temple

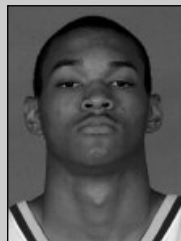
6-5 • 176 • Fr. • Guard
Baton Rouge, La.



15

Magnum Rolle

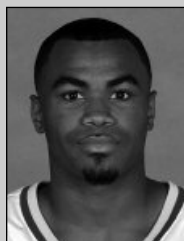
6-9 • 215 • Fr. • Forward
Freeport, Bahamas



21

Chris Johnson

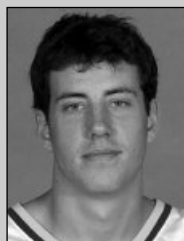
6-11 • 190 • Fr. • Forward
Washington, D.C.



22

Darrel Mitchell

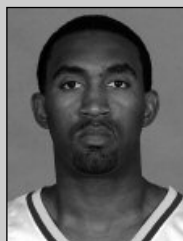
5-11 • 178 • Sr. • Guard
St. Martinville, La.



30

Alex Farrer

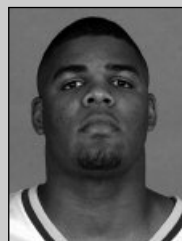
6-5 • 205 • Fr. • Guard/Forward
Phoenix, Ariz.



35

Darnell Lazare

6-8 • 240 • Jr. • Forward
Baton Rouge, La.



44

Kentrell Gransberry

6-9 • 268 • Jr. • Forward
Baton Rouge, La.



John Brady

Head Coach

Ninth Season
McComb, Miss.



Butch Pierre

Associate Head Coach

Ninth Season
Darrow, La.



Nikita Johnson

Assistant Coach

Second Season
Greenwood, Fla.



John Treloar

Assistant Coach

Second Season
Clinton, Miss.



Scott Soprych

Administrative Assistant

Second Season
Lemont, Ill.