



LSU SOFTBALL 2008

THIS IS LSU



LSU's Memorial Tower (main photo) was one of the first structures completed on the present campus and sits east of the quadrangle (inset). It represents the University as a memorial to those who gave their lives during World War I. Although it currently houses the LSU Anglo-American Art Museum, plans are in process to return Memorial Tower to a military museum as originally intended.

Campus LIFE



Location: Baton Rouge, La.
Founded: January 2, 1860
Enrollment: 29,317
President: Dr. John V. Lombardi
Major Fields for Bachelor's Degrees: 72
Major Fields for Master's Degrees: 72
Major Fields for Doctoral Degrees: 54

Louisiana State University and Agricultural & Mechanical College has, throughout its 144-year history, served the people of Louisiana, the region, the nation, and the world. LSU is creating a revolution, one of pervasive change and advancement. For the past five years, the focus of the LSU community has been an increased commitment to excellence. Our progress has been dramatic and shows no sign of stopping.

Having witnessed many of yesterday's possibilities become today's tangible realities, the LSU community set forth to capitalize on its success. The goal was to improve our standing as a nationally competitive flagship university. Following intense discussions among the LSU Board of Supervisors, campus administrators, faculty, and student leaders, the objectives required to reach this status crystallized, providing the impetus for LSU's National Flagship Agenda.



Newsweek magazine named Louisiana State University the "Most Diverse" school in the nation in the Sept. 3, 2003, issue. The enrollment consists of 24 percent minority students.

Why LSU?

Britni Sneed

Three-time All-American,
Two-time SEC Pitcher of the Year
& current Baylor assistant coach



"I chose LSU because I loved the school. Everything from the beautiful campus to the dominating softball program. On my recruiting visit I noticed the support from the athletic program and the awesome fans. The overall atmosphere was like none I had experienced! My years at LSU are dear to my heart and I will forever bleed purple and gold."

"LSU is my home. It was a place where I made my name and a place where I was able to come here and have fun. It was the best three years of my life. While you are here, have fun and become a master of time management. You need to do what you have to do to make it. Work hard. I have been blessed. Baton Rouge is the place that helped me become who I am. I will never forget this place."



Shaquille O'Neal

Four-Time NBA Champion
and two-time NBA MVP

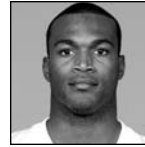
"As far back as I can remember (riding bicycles, playing little league baseball), I have literally bled purple and gold. It never crossed my mind that there was anywhere else to go other than LSU. The experiences and relationships that I developed at LSU have been an integral part of my life. No other colleges existed in my mind. I am fortunate to have attended a place that I considered a dream and look forward to my association with the University until the day I die."



David Toms

2001 PGA Champion
and LSU Graduate

"I was basically an in-state guy and had always thought about going to LSU for football and to get a good education. I made a lot of visits to different schools in my selection process, but everything always pointed toward LSU. My heart and my family guided me in that direction not just for the athletics, but for the academics as well. From top to bottom LSU has good people from the coaches on down the line."



Bradie James

Former LSU and current Dallas
Cowboys starting linebacker



College of Agriculture
Agricultural Business (B.S.)
Agribusiness Finance
Agribusiness Management
International Marketing
Animal, Dairy, & Poultry Sciences (B.S.)
Animal Sciences
Dairy Foods Technology
Dairy Production
Poultry Sciences
Preveterinary Medicine-Animal
Preveterinary Medicine-Dairy
Preveterinary Medicine-Poultry
Science & Technology-Animal Science
Science & Technology-Dairy Science
Science & Technology-Poultry Science
Environmental Management Systems (B.S.)
Environmental Science
Policy Analysis
Resource Conservation
Family, Child, & Consumer Sciences (B.S.)
Consumer Science
Human Services Management
Food Science & Technology (B.S.)
Food Business/Marketing
Food Chemistry & Analysis
Food Processing & Technology
Food Safety/Applied Microbiology
Forestry (Forest Management) (B.S.F.)
Ecological Restoration
Forest Products
Forest Resource Management
Nutritional Sciences (B.S.)
Dietetics
Nutritional Sciences/Premedical
Plant & Soil Systems (B.S.)
Agricultural Pest Management-Entomology
Agricultural Pest Management-Plant
Pathology
Crop Management
Horticultural Science
Ornamentals, Olericulture, & Pomology
Soil Science
Turfgrass Management
Urban Entomology
Textiles, Apparel, & Merchandising (B.S.)
Apparel Design
Merchandising
Textile Science
Vocational Education (B.S.)
Adult, Extension, International Education
Agricultural Education

Business Education
Career Development
Home Economics Education
Human Resource Leadership and
Development
Industrial Education
Training & Development
Wildlife & Fisheries (B.S.)
Aquaculture
Conservation Biology
Fisheries
Preveterinary Medicine-Wildlife &
Fisheries
Wetland Science
Wildlife Ecology
Wildlife Law Enforcement

College of Art & Design
Architecture (B.Arch.)
Interior Design (B.I.D.)
Landscape Architecture (B.L.A.)
Studio Art (B.F.A.)
Ceramics
Graphic Design
Jewelry/Metalsmithing
Painting
Photography
Printmaking
Sculpture

College of Arts & Sciences
Anthropology (B.A.)
Communication Disorders (B.A.)
Communication Studies (B.A.)
Economics (B.A.)
English (B.A.)
Creative Writing
Literature
Secondary Education-English
Writing & Culture
French (B.A.)
French & Francophone Cultural Studies
French & Francophone Political Studies
International Business
International Studies
Literary Studies
Secondary Education-French
General Studies (B.G.S.)
Geography (B.A. & B.S.)
German (B.A.)
History (B.A.)
Secondary Education-History

International Studies (B.A.)
Africa & the Middle East
Asia
Europe
Global Studies
Latin America
Russia & Central Asia
Latin (B.A.)
Liberal Arts (B.A.)
African & African American Studies
Art History
Studio Art
Mathematics (B.S.)
Actuarial Science
Applied/Discrete Mathematics
Applied Mathematics/Communications
Engineering
Computer Science
Mathematics
Secondary Education-Mathematics
Philosophy (B.A.)
Religious Studies
Political Science (B.A.)
Psychology (B.A. & B.S.)
Russian Area Studies (B.A.)
Sociology (B.A.)
Applied Sociology
Criminology
Rural Sociology
Spanish (B.A.)
Secondary Education-Spanish
Women's & Gender Studies (B.A.) College
of Basic Sciences
Biochemistry (B.S.)
Biological Sciences (B.S.)
Marine Biology
Secondary Education-Biology
Chemistry (B.S.)
Biological Chemistry
Chemical Physics
Chemistry
Chemistry and a Second Discipline
Environmental Chemistry
Materials
Polymers
Preprofessional Chemistry
Secondary Education-Chemistry
Computer Science (B.S.)
Geology (B.S. Geol.)
Environmental Geology
Geology
Microbiology (B.S.)

Physics (B.S.)
Astronomy
Medical Physics
Physics
Physics and a Second Discipline
Secondary Education-Physics

E. J. Ourso College of
Business
Accounting (B.S.)
Management Accounting
Economics (B.S.)
Empirical Economic Analysis
Finance (B.S.)
General Business Administration (B.S.)
Business Administration-Prelaw
Business & Public Administration
Information Systems & Decision Sciences
(B.S.)
International Trade & Finance (B.S.)
Empirical Economics Analysis
Management (B.S.)
Entrepreneurship
Human Resource Management
Management
Marketing (B.S.)

College of Education
Early Childhood Education: PK-3 Teacher
Certification (B.S.)
Elementary Grades Education (B.S.)
Four-Year Teacher Certification, Grades 1-6
Holmes Certification
Kinesiology (B.S.)
Athletic Training
Fitness Studies
Health & Physical Education Teacher
Certification
Human Movement Science
Sports Studies
Secondary Education (B.S.)
Art

College of Engineering
Biological Engineering (B.S.B.E.)
Chemical Engineering (B.S.Che.E.)
Civil Engineering (B.S.C.E.)
Computer Engineering (B.S.E.E.)
Construction Management (B.S.C.M.)
Electrical Engineering (B.S.E.E.)
Environmental Engineering (B.S.Env.E.)
Industrial Engineering (B.S.I.E.)

Mechanical Engineering (B.S.M.E.)
Petroleum Engineering (B.S.P.E.)
Manship School of Mass
Communication
Mass Communication (B.A.M.C.)
Advertising
Electronic Media
Journalism
Political Communication
Public Relations

College of Music & Dramatic
Arts
Music (B.A.)
Music (B.M.)
Brass
Composition
Harp
Organ
Percussion
Piano Pedagogy
Piano Performance
String
Voice
Woodwind
Music Education (B.M.Ed.)
Instrumental
Vocal
Theatre (B.A.)
Arts Administration
Design/Technology
Literature, History, & Theory
Performance
Theatre Studies

Preprofessional Programs *
(Nondegree)
Allied Health Programs
Dental Hygiene
Dental Laboratory Technology
Ophthalmic Medical Technology
Physician's Assistant
Premedical Technology
Prenursing
Preoccupational Therapy
Prephysical Therapy
Rehabilitation Counseling
Respiratory Therapy

* The final two-three years of these preprofessional programs are offered by the LSU Health Sciences Center and/or other medical schools. These are nondegree programs.



The state capitol building of Louisiana, located in the heart of downtown Baton Rouge, is the tallest capitol building in the nation at 34 stories and overlooks the Mississippi River.

Baton ROUGE

Distance Chart from Baton Rouge (BASED ON 70 MPH SPEED):

Atlanta, Ga.7 hours	Jackson, Miss.2 ¹ / ₂ hours	New Orleans, La.1 hour
Biloxi, Miss.2 hours	Jacksonville, Fla.8 ¹ / ₂ hours	Orlando, Fla.10 hours
Birmingham, Ala.6 hours	Little Rock, Ark.5 hours	Pensacola, Fla.4 hours
Dallas, Texas6 ¹ / ₂ hours	Mobile, Ala.3 hours	Shreveport, La.4 hours
Houston, Texas4 hours	Monroe, La.2 ¹ / ₂ hours	

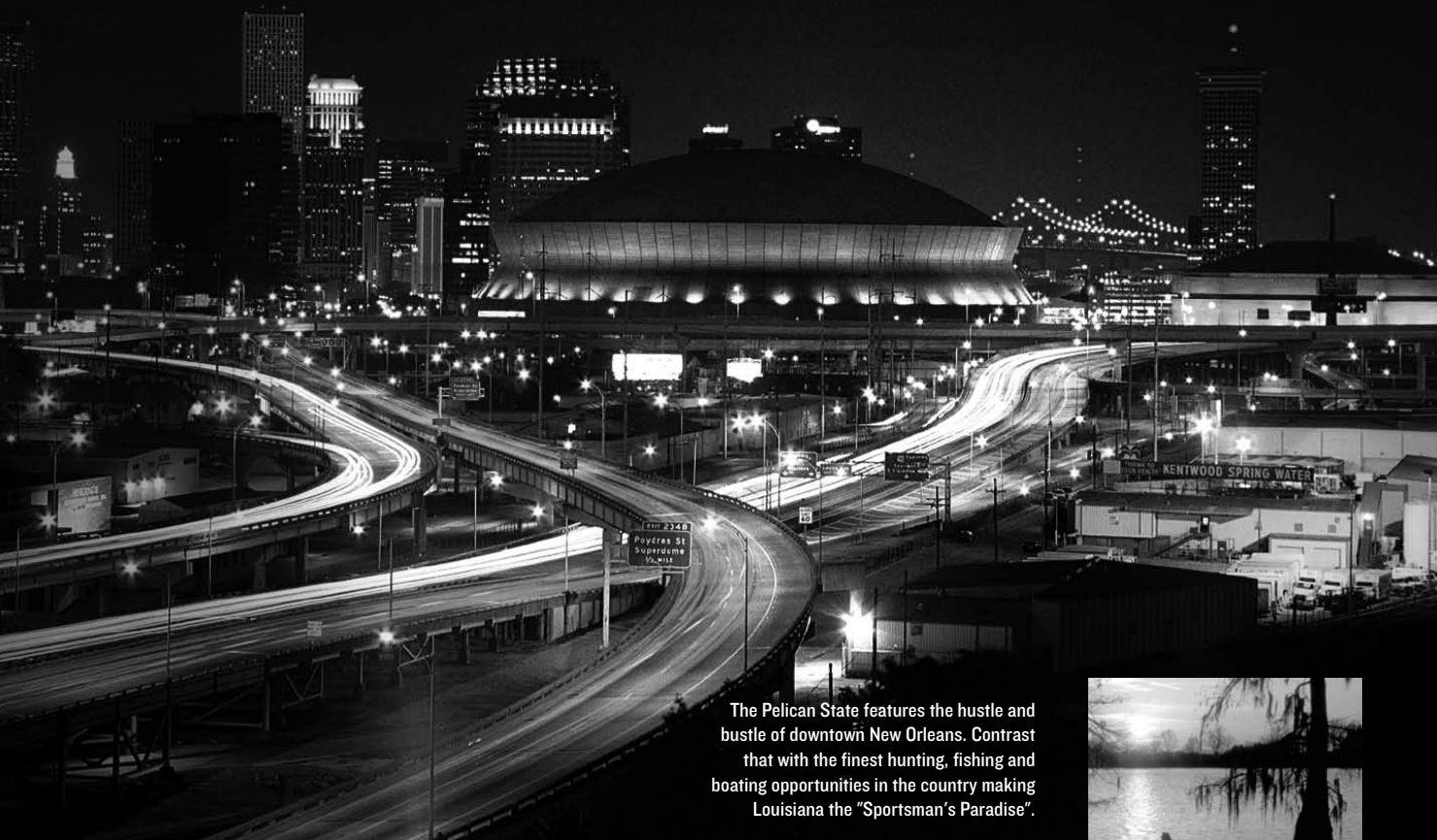
Hospitality and comfort are a Southern tradition practiced to perfection around Baton Rouge. Minutes from the city, ancient moss-draped oaks, fragrant honeysuckle, formal gardens and the finest examples of Southern architecture await. Combine this with the excitement of the mighty Mississippi River, Cajun music and a gourmet meal that is topped with freshly brewed cafe-au-lait at one of Baton Rouge's fine restaurants. So what does the future hold? Baton Rouge is now one of the fastest growing cities in the South -- a bustling Metropolis of cutting edge technology companies, high-powered law firms and forward thinking city leaders who passionately support the arts and promote the local economy. Old Man River just got an upgrade. Yes, this is one city that's rolling on the river.

Proximity

Baton Rouge is just an hour away from the French Quarter in New Orleans and even closer to the million-acre Atchafalaya Swamp, which is called one of the biggest fishing ponds in the country.



Courtesy of Baton Rouge Visitors & Conventions Bureau



The Pelican State features the hustle and bustle of downtown New Orleans. Contrast that with the finest hunting, fishing and boating opportunities in the country making Louisiana the "Sportsman's Paradise".



Louisiana

THE PELICAN STATE



Louisiana, one of America's most culturally and geographically diverse states, is located in the heart of the Deep South. Adjacent to the Gulf of Mexico and dotted with hundreds of lakes and bayous, Louisiana is home to all types of terrain from swamps and marshes to lush forests and gentle hills.

◀ Unique Culture

Louisiana is home to Mardi Gras, a two-week party that includes more than 60 parades and millions of visitors from around the world. All year long New Orleans Jazz, Creole culture, stately riverboats and some of the finest cuisine in the world is mixed into the diverse and renowned culture of Louisiana.

Cuisine ▶

Foods like boiled crawfish, jambalaya, shrimp etouffee and gumbo make the cajun and creole cuisine of Louisiana the envy of the nation.



GRADUATES

2007

Lauren Castle, General Studies
Lauren Delahoussaye, Mass Communications
Camille Harris, General Studies
Kristen Hobbs, Mass Communications
Leslie Klein, Biological Sciences
Emily Turner, Communications Studies

2006

Leigh Ann Danos, Biological Sciences
Stephanie Hill, Finance/Political Science
Megann Streege, General Studies

2005

Christy Connor, General Studies
Sara Fitzgerald, Kinesiology
LaDonia Hughes, General Studies

2004

Jennie Reeves, Family & Consumer Sciences
Kristin Schmidt, Political Science
Julie Wiese, Kinesiology

2003

Jessica Clark, Biological Engineering
Erin Johnson, Sociology
Trena Peel, Kinesiology
Aleshia Perry, Kinesiology
Trisha Ward, Psychology

2002

Dee Douglas, Kinesiology
April Janzen, Elementary Education
Ashley Lewis, Family Sciences
Jennifer Schuelke, Secondary Education
Britni Sneed, Kinesiology

2001

Janell Deslattes, Plant Biology
Ashlee Ducote, Kinesiology
Stephanie Hastings, Kinesiology
Kim Traina, Sociology
Auburne Ziober, Advertising

2000

Tara Asbill, Kinesiology
Shaunte' Fremin, Kinesiology
Stacey Newton, Kinesiology
Taryn Perry, Elementary Education
Julie Stashko, Kinesiology

1999

Jodi Otten, Kinesiology

1998

Sophia Mount, Kinesiology
Melissa Poole, Kinesiology
Cathy Whitlock, Kinesiology

1997

Brandi Landry, Kinesiology
Tyra Perry Kinesiology

1996

Cindy Pineda, Mass Communications

Academic Honors

CoSIDA Academic All-Americans

2007	Dee Dee Henderson	Third Team
2006	Stephanie Hill	First Team
2005	Stephanie Hill	First Team
2000	Tara Asbill	Third Team

CoSIDA Academic All-District Selections

2007	Dee Dee Henderson	First Team
2006	Stephanie Hill	First Team
2005	Stephanie Hill	First Team
2004	Leigh Ann Danos	First Team
2004	Stephanie Hill	First Team
2004	Kristin Schmidt	First Team
2003	Leigh Ann Danos	Second Team
2003	Kristin Schmidt	Second Team
2000	Tara Asbill	First Team
1999	Tara Asbill	

Graduation Report

Every one of LSU's 21 four-year softball letterwinners from 1997-2007 has received her bachelor's degree, including all three members of the 2007 class - Kristen Hobbs, Leslie Klein and Emily Turner.

2007 SEC Academic Honor Roll

Quinlan Duhon
Dee Dee Henderson
Kristen Hobbs

Andrea Smith
Emily Turner



All-American LaDonia Hughes earned her degree in general studies in spring 2005

Academic SUCCESS

Academic Staff



Tomas Jimenez
Executive Director



Tim Boyle
Associate Director



John Allen
Associate Director



Tommy Powell
Associate Director



Dr. Mary Boudreaux
Associate Director



Derek Cowherd
Assistant Director



Jason Fountain
Director of Directed Studies



Carole Walker
Associate Director



Leah Saal
Learning Specialist



Jennifer Timmer
Learning Specialist



Kristin Price
Learning Specialist



Dr. Tommy Karam
Director - Communications Lab

Academic Support

The goal for each student-athlete is to reach and receive the highest-quality education and degree. The responsibility of the academic center is to oversee the educational development and progress toward graduation for all student-athletes.

- Tutoring
- Career Counseling and Development
- Compliance with academic rules established by LSU, the NCAA and SEC
- Time Management
- Study Skills

Community OUTREACH

The Shaquille O'Neal CHAMPS/Life Skills Program

The Community Service aspect does not only serve to enhance a student-athletes' college experience, but also serves to expand character. Athletes not only gain a strong sense of self-worth, but also experience personal satisfaction and growth from volunteering and community service activities. More important are the benefits that the community receives. It enables the community to gain an enormous advantage in feeling that they have a "partnership" with LSU student-athletes.

LSU student-athletes participate in a variety of community service projects including reading in schools, nursing home visits, hospital pediatric ward visits, speaking engagements, and more in East Baton Rouge Parish.



Mike Mallet
Director for the
CHAMPS/Life Skills program



Jade Jenkins
Assistant Director for the
CHAMPS/Life Skills program

What is CHAMPS?

The Shaquille O'Neal CHAMPS/Life Skills program was developed by the NCAA to help prepare student-athletes for the challenges of life beyond the playing field. Through workshops, service projects, and social events, CHAMPS, an acronym for Challenging Athletes Minds for Personal Success, brings LSU student-athletes information that will prepare them for the biggest game of all - the game of life!



How Can CHAMPS Help?

By focusing on "real life" skills and personal development, the CHAMPS Program not only assists the student-athletes with meeting daily challenges, but also enhances student-athlete's growth in their college years and beyond.

CHAMPS at LSU

The CHAMPS/Life Skills program at LSU is operated out of the Cox Communications Academic Center for Student-Athletes, and the focus of the program is on five commitments viewed as critical to personal growth:

- Academic Excellence
- Athletic Excellence
- Career Development
- Personal Development
- Community Service



The LSU Softball team reaches out to the local community. Quinlan Duhon (above) and members of the softball team read to students during the Westdale Elementary Book Fair. Members of the softball team (bottom) visited with children at Our Lady of the Lake's Children's Ward.



Bo Campbell Auditorium

The 1,000-seat auditorium is used through the year as a classroom and lecture hall. Each seat in the auditorium has space for a laptop and a modem hookup, providing each student unlimited learning opportunities. The auditorium also contains a movie theatre size screen to aid professors with lectures and classroom activities.

COX COMMUNICATIONS

Academic Center FOR STUDENT-ATHLETES

Study Area

Included in the 54,000 square feet of the Academic Center are individual study areas as well as 14 private computer rooms for student-athletes to work one-on-one with tutors or by themselves.



The Library

The library provides a perfect setting for individual, group, or tutored study.

Computer Stations

Throughout the Academic Center are 300 computer stations, providing student-athletes with a quiet working environment for research, writing and studying.



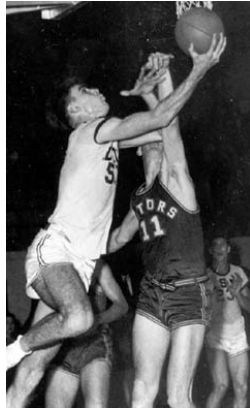
A \$15 million renovation to the Gym Armory in 2002 not only made it one of the nation's premier academic centers, but put it at the forefront. Improvements to the existing center give LSU student-athletes the best opportunity for success by providing access to the latest technology, as well as an array of expanded services.

Amenities

- ▶ 54,000 square feet of working space
- ▶ 300 computer workstations
- ▶ 14 private computer rooms in a state-of-the-art computer lab
- ▶ Additional study rooms and classrooms for private or group study
- ▶ Electronic scheduling of tutoring sessions
- ▶ A 1,000-seat auditorium for classes and lectures

LSU GREATS

The five individuals on this page are the only men to have their jerseys retired by LSU. Basketball has retired the No. 23 for Pete Maravich, No. 50 for Bob Pettit, Jr., and No. 33 for Shaquille O'Neal. Football's only retired jersey is the No. 20 worn by Billy Cannon, while baseball retired the No. 15 in honor of longtime coach and current athletics director Skip Bertman.



50

Bob Pettit

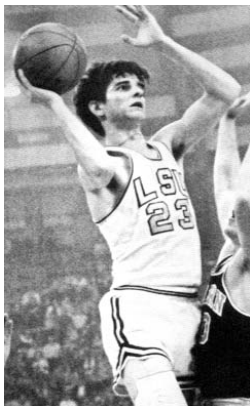
Led LSU to its first NCAA Final Four in 1953 and he later became the first player in NBA history to exceed the 20,000-plus point barrier. Pettit is a member of the NBA Hall of Fame and in 1997 he was named as one of the top 50 players in NBA history.



20

Billy Cannon

One of the true legends of college football in the South, Cannon was the 1959 Heisman Trophy winner and helped the Tigers to the 1958 national title. Cannon's most memorable performance came in 1959 against Ole Miss when No. 1 LSU trailed No. 3 Ole Miss 3-0 in the fourth quarter. He fielded a punt, broke seven tackles and returned it 89 yards for the 7-3 victory. He went on to a successful 11-year professional career.



23

Pete Maravich

"Pistol Pete" Maravich still holds the NCAA record for career points with 3,667 and for career scoring average with 44.2 points per game. He was selected the National Player of the Year in 1970 after leading the Tigers to the NIT Final Four. He scored 50+ points an amazing 28 times. He went on to a 10-year professional career and was selected as one of the NBA's 50 greatest players in 1997.



33

Shaquille O'Neal

Was the first pick in the 1992 NBA Draft. He was named MVP of the league in 2000 and was a three-time NBA Finals MVP after leading the Los Angeles Lakers to three World Championships. At LSU, O'Neal averaged 21.6 points and 13.6 rebounds for his career, and in 1991, he was named the World's Amateur Athlete of the Year as well as SEC Athlete of the Year and National Player of the Year. In 1997, he was named as one of the top 50 players in NBA history.



15

Skip Bertman

A legend in the college baseball ranks, Bertman created a dynasty at LSU, guiding the Tigers to five national titles in a 10-year stretch from 1991-2000. He also skippered the United States to a bronze medal at the 1996 Olympics in Atlanta and was an assistant on the gold medal-winning U.S. squad in Seoul, Korea in 1988. Bertman retired from coaching following the 2001 season and is currently the LSU athletics director. Bertman was inducted into the College Baseball Hall of Fame in 2006.

**LSU's success in each of its 20 sports is evident
with this outstanding list of former Tigers.**



Seimone Augustus

Augustus was the two-time NCAA National Player of the Year, receiving the Wade Trophy, the Naismith and the Wooden Awards as a junior and a senior. Augustus helped lead the Lady Tigers to three straight Final Fours and was the NCAA Regional MOP three times. She was the No. 1 draft pick in the 2006 WNBA draft.



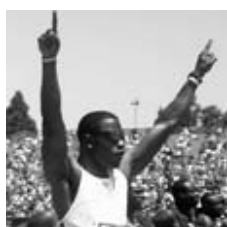
Nicki Arnstad

The 2002 NCAA floor exercise co-champion, Arnstad became the first LSU gymnast to win a national title. She was a two-time All-American and won the NCAA Central Regional Floor and All-Around Championships.



April Burkholder

The 2006 NCAA beam co-national champion. Finished career with 14 All-America honors and four All-SEC selections. In addition, was named the NCAA Central Region Gymnast of the year twice (2004, 2005), the SEC Gymnast of the Year on two occasions (2004 and 2005) and was also the conference's Freshman of the Year in 2003.



Xavier Carter

Carter won a school record-tying seven NCAA titles on the track and earned a total of 10 All-America honors. He became just the second athlete to win four titles at one national meet, joining Jesse Owens. Holds four individual school records and anchored LSU's 4x400-meter relay teams to two school records.



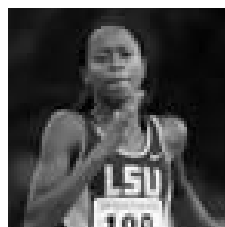
Walter Davis

A two-time Olympian and World Champion, Davis helped LSU to national titles in 2001 and 2002. The SEC Male Athlete of the Year in 2002, he won six NCAA titles and earned a school-record nine All-America honors.



Meredith Duncan

The nation's top collegiate golfer in 2002, Duncan left LSU as the school's best female golfer. She earned first-team All-America honors as a senior in 2002 and won the United States Women's Amateur Championship in 2001.



Muna Lee

The most decorated track and field athlete in school history, Lee won 20 All-America awards and a school record seven national titles while helping the Lady Tigers to five NCAA team championships during her time at LSU. A 2004 Olympian, she finished seventh in the 200 meters at the Summer Games in Athens, Greece.



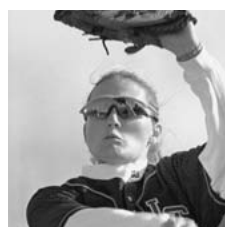
Ben McDonald

Named the Golden Spikes National Player of the Year in 1989 and he was later the first player chosen in the Major League Baseball Draft by the Baltimore Orioles.



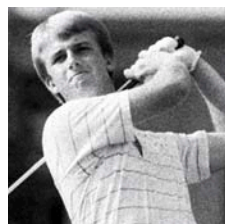
Kristin Schmidt

The 2004 Women's College World Series Most Outstanding Player, Schmidt was a three-time NFCA All-American and one of only two players in conference history to earn back-to-back SEC Tournament Most Outstanding Player honors.



Britni Sneed

One of three four-time first-team All-SEC selections in conference history, Sneed was a two-time SEC Player of the Year and a three-time NFCA All-American, leading the Tigers to their first Women's College World Series appearance in 2001.



David Toms

The two-time SEC Player of the Year, Toms has gone on to a successful career on the PGA Tour. Among his PGA Tour victories was a thrilling win at the PGA Championship in August of 2001.



Todd Walker

Capped his LSU career as the SEC's all-time leader in hits, runs, RBIs, and total bases. Walker, who is a member of the All-Time College World Series Team, led LSU to the national title in 1993.

INTRO

THIS IS LSU

COACHES

TIGERS

REVIEW

HISTORY

RECORDS

LSU

MEDIA



Shaquille O'Neal

Four-time NBA champion, including the 2006 title with Miami, Shaquille O'Neal, the 2000 NBA MVP, joined the long list of prominent LSU alumni when he earned his degree in general studies in December 2000.



Seimone Augustus

Received her degree in 2005 after just three years at LSU and while earning NCAA Women's Basketball National Player of the Year honors twice. The first pick of the 2006 WNBA draft by the Minnesota Lynx.



Prominent LSU ALUMNI



Eduardo Aguirre, Jr.

Named the first Director of U.S. Citizenship and Immigration Services (USCIS) for the Department of Homeland Security in 2003, Aguirre, Jr., was appointed the U.S. Ambassador to Spain in 2005.



Dr. James Andrews

A world-renowned orthopedic surgeon. Andrews is a 1963 graduate of LSU and a 1967 graduate of LSU Medical School. While at LSU, Andrews won the SEC indoor and outdoor titles in the pole vault.



Lod Cook

Graduated from LSU with a bachelor's degree in Mathematics in 1955 and then earned his Master's degree in Petro Engineering in 1955. Cook served as CEO of ARCO for nine years.



Kevin Faulk

Excelled in both the classroom and on the playing field as he graduated in just three years. Faulk is currently a member of the three-time Super Bowl Champion New England Patriots.



Carlos Roberto Flores

The president of Honduras from 1997-2001, Flores helped the nation recover after Hurricane Mitch devastated the country in 1998. Flores is married to the former Mary Carol Flake, also an alumnus of LSU.



Jim Flores

Graduated with two LSU bachelors of science degrees; one in Corporate Finance in 1981 and the second in Petroleum Land Management in 1982. Flores is currently Chairman, President and CEO of Plains Exploration & Production Company

LSU's enrollment is more than 29,000 students, including more than 1,600 international students and nearly 5,000 graduate students.

Dr. Larry O. Arthur - AIDS researcher.

John Ed Bradley - Sports Illustrated writer and novelist.

John Breaux - U.S. Senator (1987-2005) and U.S. Congressman (1972-86) from Louisiana.

Wil Calhoun - Executive Producer of television sitcom "Friends".

Cassandra Chandler - One of the Federal Bureau of Investigation's highest ranking African-American women as special agent in charge of the Norfolk Field office.

"Lightning Joe" Lawton Collins - Chief of Staff for President Harry Truman.

Bill Conti - Oscar-winning composer who has written theme music for several well-known movies, including "Rocky" and its sequels.

Eric Arturo Delvalle - President of Panama (1985-1988).

A. Wright Elliott - Retired executive vice president, Chase Manhattan Bank.

Graves Erskine - U.S. Marine Corps General in WWII.

Maxime A. Faget - Designed Mercury and Gemini spacecrafts.

Mary Carol Flake Flores - Former first lady of Honduras.

Murphy "Mike" Foster, Jr. - Former governor of Louisiana (1996-2004).

Kevin Griffin - Lead singer of the platinum-selling rock band "Better than Ezra"

Paul Groves - Award-winning tenor with the Metropolitan Opera

Rufus William (Bill) Harp - Television set decorator for series including "L.A. Law" and "Moonlighting"

Pat Hewlett - CIO of Exxon Mobil.

Walter Hitesman - Former president, Reader's Digest.

Hubert Humphrey - U.S. vice president (1965-69).

W. Vernon Jones - Senior Scientist for Suborbital Research, NASA headquarters.

Delos "Kip" Knight - Vice president of marketing and brand management for eBay international.

Russell Long - U.S. Senator from Louisiana (1948-87).

Ray Marshall - Secretary of Labor under President Jimmy Carter.

James E. Maurin - Founding partner and CEO of Stirling Properties, a national real estate services firm.

Grover Murray - Former president of Texas Tech University.

Jake Lee Netterville - Chairman of the board of Postlethwaite and Netterville, the largest Louisiana-based public accounting firm.

Edwin Newman - Longtime NBC News journalist and author.

Carolyn Bennett Patterson - Former senior editor, National Geographic.

J. Howard Rambin - Former CEO and Chairman of the Board, Texaco.

Rex Reed - Drama critic, syndicated columnist.



Kenneth Brown

A 1995 graduate of LSU and the host of Home and Garden Television's (HGTV) show "redesign", Brown credits much of his success to LSU's interior design program, which is ranked among the top 10 nationally. Brown's show completed its first season in 2005, and HGTV plans to air 65 more episodes.

Maj. Gen. Thomas Rhame - Led 1st Infantry Division against Iraq during Persian Gulf War.

Thomas O. Ryder - Chairman of the Board, The Reader's Digest Association.

Frances Seghers - Senior VP of Sony Entertainment European Community Affairs, which includes Sony Music, Sony Pictures and Sony Playstation.

Dolores Spikes - Former President of the Southern University System and the University of Maryland-Eastern Shore.

Ray Strother - Author, political consultant.

David Suarez - Co-owner of Atlantic Company of America, Inc., which performed the historic restoration of the Washington Monument, the Smithsonian's Air and Space Museum and the main U.S. Treasury Building.

Rebecca Wells - Author of the novel and film "Devine Secrets of the Ya-Ya Sisterhood."

Joanne Woodward - Academy Award-winning actress and wife of Paul Newman.



Reinosuke Hara

Researched at LSU in the 1950s and then later received an honorary Doctorate of Science degree from LSU in 1992. Former President and CEO of Seiko Instruments.



Mary L. Landrieu

Became the first woman from Louisiana elected to a full term in the United States Senate in 1997.



Harry J. Longwell

Graduated from LSU in 1963 with a Bachelor's degree in petroleum engineering and retired in 2004 as the Executive Vice President and Director of of ExxonMobil.



Eddie J. Jones

Former President of the NFL's Miami Dolphins franchise, the 37-year veteran of the NFL is currently a Trustee of the Bert Bell/Pete Rozelle Retirement and Disability Plan.



Marty Sixkiller

Senior Technical Director for PDI/DreamWorks' movies "Antz," "Shrek," "Shrek 2," "Shrek the Third," "Madagascar" and "Over the Hedge".



James Carville

Received both a Bachelor's degree and Law degree from LSU. Carville gained fame in the 1990s as the chief campaign strategist for Bill Clinton and Al Gore. Carville also penned a best-selling memoir titled "All's Fair: Love, War and Running for President".

INTRO

THIS IS LSU

COACHES

TIGERS

REVIEW

HISTORY

RECORDS

LSU

MEDIA



Athletic TRAINING

LSU boasts the largest and most complete athletic training facilities in all of collegiate athletics with both the Football Operations Center and the Broussard Center for Athletic Training in Tiger Stadium. Both are furnished with the latest in technology and equipment. The Football Operations Center training room features a full view of the practice fields, two hot/cold jacuzzis and an underwater treadmill. The Broussard Center includes an on-site x-ray room, an in-house pharmacy, as well as the largest hydrotherapy pool in both collegiate and professional sports and is one of the few collegiate training centers with a full-service pharmacy and a full-service vision center.



Hydrotherapy Treatment

An integral part of rehabbing and developing LSU student-athletes is the operations center's hot/cold jacuzzis and an underwater treadmill in a fully equipped Hydrotherapy room. The Broussard training center (above) boasts the largest hydrotherapy pool in both collegiate and professional sports.



Broussard Athletic TRAINING CENTER



The two story, 22,000 square foot facility contains 20 treatment tables with the newest forms of modalities available, 14 taping stations, a 1,600 square foot rehabilitation area which contains the latest rehabilitation equipment including the Cybex Norm, Woodway treadmills and Body Master select rise equipment. LSU's multi-million dollar athletic training facility is named in honor of Dr. Martin J. Broussard (left), the legendary trainer whose career spanned over 40 years at LSU.





Strength & CONDITIONING

Tiger Stadium WEIGHT ROOM

Strength and conditioning can be the heart and soul of an athletic program's success, and LSU has taken great strides to improve its strength program and facilities. Measuring 10,000-square feet, LSU has one of the finest strength and conditioning facilities in the nation.



The LSU strength and conditioning facility, located in Tiger Stadium, was built in 1997 and features the latest in both strength training and cardiovascular training equipment.



Melissa Moore and the weight room staff conduct workout sessions that include both strength and endurance training.



Tiger Park

Built - 1996 • Capacity - 1,000

Largest Crowd - 2,326 vs. Tennessee on April 28, 2007

Dimensions - 200 Left Field Line • 200 Right Field Line • 220 Center Field

Tiger PARK

The heart of any softball program lies in its facility. LSU will bid farewell to Tiger Park, its original home, in 2008 before resuming play in the new Tiger Park in 2009. The new stadium will be one of the finest collegiate softball facilities in America.

