



Georgia at LSU

03/07/20 Maravich Assembly Center, Baton Rouge, LA
2019-20 Men's Basketball

Game Time: 1:00 PM
Game Duration: 1:53
Attendance: 11,697

Officials: Joe Lindsay, K.B. Burdett, Jr., Gerald Williams

Georgia - 64

Record: 15-16 (5-13)

| NO. | Name | Min | FG | | | Rebounds | | | Fouls | | TP | AS | TO | ST | Blocks | | +/- |
|---------------|---------------------|---------|-------|------|-------|----------|----|-----|-------|----|----|----|----|----|--------|----|-----|
| | | | M-A | M-A | M-A | OR | DR | TOT | PF | FD | | | | | BS | BA | |
| 20 | Rayshaun Hammonds | F 31:10 | 4-11 | 0-1 | 4-4 | 2 | 6 | 8 | 4 | 3 | 12 | 2 | 1 | 1 | 0 | 1 | -25 |
| 2 | Jordan Harris | G 22:16 | 3-7 | 0-4 | 1-2 | 0 | 1 | 1 | 3 | 1 | 7 | 2 | 1 | 1 | 0 | 0 | -19 |
| 5 | Anthony Edwards | 37:12 | 6-22 | 1-12 | 4-6 | 0 | 3 | 3 | 1 | 5 | 17 | 1 | 2 | 1 | 0 | 1 | -30 |
| 10 | Toumani Camara | 16:20 | 1-4 | 0-1 | 0-0 | 3 | 2 | 5 | 4 | 2 | 2 | 1 | 3 | 0 | 0 | 0 | -10 |
| 15 | Sahvir Wheeler | 28:23 | 3-11 | 1-5 | 2-2 | 2 | 0 | 2 | 2 | 3 | 9 | 2 | 1 | 0 | 0 | 0 | -22 |
| 3 | Christian Brown | 13:25 | 3-4 | 1-1 | 0-0 | 2 | 1 | 3 | 2 | 0 | 7 | 0 | 1 | 2 | 0 | 1 | -9 |
| 14 | Tye Fagan | 21:18 | 4-6 | 0-2 | 0-0 | 1 | 5 | 6 | 0 | 0 | 8 | 0 | 1 | 0 | 0 | 0 | -16 |
| 0 | Donnell Gresham Jr. | 10:59 | 0-1 | 0-0 | 0-0 | 2 | 1 | 3 | 1 | 1 | 0 | 1 | 1 | 1 | 0 | 0 | -9 |
| 30 | Mike Peake | 04:03 | 0-1 | 0-0 | 0-0 | 0 | 0 | 0 | 0 | 0 | 0 | 0 | 0 | 0 | 0 | 0 | -2 |
| 24 | Rodney Howard | 12:54 | 1-2 | 0-0 | 0-0 | 1 | 2 | 3 | 2 | 0 | 2 | 0 | 0 | 0 | 1 | 0 | -8 |
| 11 | Jaxon Etter | 01:22 | 0-0 | 0-0 | 0-0 | 0 | 1 | 1 | 0 | 0 | 0 | 0 | 0 | 0 | 0 | 0 | -1 |
| 32 | Stan Turnier | 00:38 | 0-0 | 0-0 | 0-0 | 0 | 0 | 0 | 0 | 0 | 0 | 0 | 0 | 0 | 0 | 0 | 1 |
| Team | | | | | | 1 | 0 | 1 | | | 0 | | 0 | | | | |
| Totals | | | 25-69 | 3-26 | 11-14 | 14 | 22 | 36 | 19 | 15 | 64 | 9 | 11 | 6 | 1 | 3 | -30 |

| Shooting By Period | | |
|---------------------|-------|-------|
| 1 st FG% | 14-34 | 41.2% |
| 3PT% | 2-11 | 18.2% |
| FT% | 4-4 | 100% |
| 2 nd FG% | 11-35 | 31.4% |
| 3PT% | 1-15 | 6.7% |
| FT% | 7-10 | 70% |
| GM FG% | 25-69 | 36.2% |
| 3PT% | 3-26 | 11.5% |
| FT% | 11-14 | 78.6% |

Dead Ball Rebounds: 0, 0

Technical Fouls: NONE

LSU - 94

Record: 21-10 (12-6)

| NO. | Name | Min | FG | | | Rebounds | | | Fouls | | TP | AS | TO | ST | Blocks | | +/- |
|---------------|-----------------|---------|-------|-------|-------|----------|----|-----|-------|----|----|----|----|----|--------|----|-----|
| | | | M-A | M-A | M-A | OR | DR | TOT | PF | FD | | | | | BS | BA | |
| 2 | Trendon Watford | F 31:14 | 5-10 | 0-2 | 3-4 | 1 | 10 | 11 | 2 | 4 | 13 | 3 | 2 | 1 | 1 | 0 | 23 |
| 5 | Emmitt Williams | F 25:09 | 3-4 | 1-1 | 0-1 | 1 | 4 | 5 | 3 | 4 | 7 | 5 | 1 | 1 | 0 | 0 | 8 |
| 4 | Skylar Mays | G 36:17 | 7-11 | 3-5 | 2-2 | 0 | 6 | 6 | 1 | 2 | 19 | 0 | 1 | 1 | 0 | 0 | 23 |
| 12 | Marshall Graves | G 08:58 | 2-3 | 1-1 | 0-0 | 0 | 0 | 0 | 0 | 0 | 5 | 0 | 1 | 0 | 0 | 0 | 12 |
| 14 | Marlon Taylor | G 36:07 | 10-17 | 3-7 | 7-9 | 4 | 3 | 7 | 3 | 4 | 30 | 0 | 2 | 1 | 0 | 1 | 29 |
| 0 | Darius Days | 00:47 | 0-0 | 0-0 | 0-0 | 0 | 0 | 0 | 0 | 0 | 0 | 0 | 0 | 0 | 0 | 0 | 2 |
| 1 | Javonte Smart | 37:02 | 4-10 | 2-3 | 3-3 | 0 | 7 | 7 | 2 | 4 | 13 | 10 | 3 | 1 | 0 | 0 | 26 |
| 21 | Courtese Cooper | 08:51 | 1-1 | 0-0 | 0-0 | 0 | 0 | 0 | 1 | 1 | 2 | 0 | 1 | 0 | 0 | 0 | 10 |
| 15 | Aundre Hyatt | 14:37 | 2-2 | 1-1 | 0-0 | 0 | 1 | 1 | 3 | 0 | 5 | 0 | 1 | 1 | 2 | 0 | 16 |
| 10 | James Bishop | 00:58 | 0-1 | 0-1 | 0-0 | 0 | 0 | 0 | 0 | 0 | 0 | 1 | 0 | 0 | 0 | 0 | 1 |
| Team | | | | | | 0 | 2 | 2 | | | 0 | | 1 | | | | |
| Totals | | | 34-59 | 11-21 | 15-19 | 6 | 33 | 39 | 15 | 19 | 94 | 19 | 13 | 6 | 3 | 1 | 30 |

| Shooting By Period | | |
|---------------------|-------|-------|
| 1 st FG% | 18-28 | 64.3% |
| 3PT% | 6-10 | 60.0% |
| FT% | 7-8 | 87.5% |
| 2 nd FG% | 16-31 | 51.6% |
| 3PT% | 5-11 | 45.5% |
| FT% | 8-11 | 72.7% |
| GM FG% | 34-59 | 57.6% |
| 3PT% | 11-21 | 52.4% |
| FT% | 15-19 | 78.9% |

Dead Ball Rebounds: 1, 0

Technical Fouls: NONE

| | UGA | LSU |
|------------------|---------------------------|---------------------------|
| Biggest lead | 1 (1 st 13:17) | 32 (2 nd 0:44) |
| Best Scoring Run | 7 (1 st 1:44) | 9 (1 st 4:10) |
| Lead Changes | 2 | |
| Times Tied | 3 | |
| Time with Lead | 00:20 | 37:38 |

| Points from | UGA | LSU |
|---------------|-----|-----|
| Turnovers | 15 | 16 |
| Paint | 42 | 42 |
| Second Chance | 14 | 5 |
| Fast Breaks | 14 | 13 |
| Bench | 17 | 20 |

| | Period by Period Scoring | | |
|-----|--------------------------|-----|-----|
| | 1st | 2nd | TOT |
| UGA | 34 | 30 | 64 |
| LSU | 49 | 45 | 94 |



Period 1

Quarter Starters:

| | | | | | |
|------------|-------------|-------------|--------------|--------------|---------------|
| LSU | 2 Watford T | 4 Mays S | 5 Williams E | 12 Graves M | 14 Taylor M |
| UGA | 2 Harris J | 5 Edwards A | 10 Camara T | 15 Wheeler S | 20 Hammonds R |

| Game Time | LSU | Score | Diff | UGA |
|-----------|--|------------|----------|--|
| 20:00 | 5 WILLIAMS E jumpball won | | | 10 CAMARA T jumpball lost |
| 19:40 | 5 WILLIAMS E 2pt FG in the paint, dunk, made (2) | 2-0 | 2 | |
| 19:26 | | | | 20 HAMMONDS R 3pt FG , jump shot missed |
| 19:23 | | | | 10 CAMARA T offensive rebound (1) |
| 19:17 | | | | 15 WHEELER S 3pt FG , jump shot missed |
| 19:14 | | | | 10 CAMARA T offensive rebound (2) |
| 19:01 | | 2-2 | 0 | 2 HARRIS J 2pt FG in the paint, layup made (2) |
| 18:48 | 4 MAYS S 2pt FG outside the paint, jump shot made (2) | 4-2 | 2 | |
| 18:32 | | | | 10 CAMARA T 2pt FG in the paint, jump shot missed |
| 18:29 | 2 WATFORD T defensive rebound (1) | | | |
| 18:25 | 4 MAYS S 3pt FG , jump shot missed | | | |
| 18:22 | | | | 20 HAMMONDS R defensive rebound (1) |
| 18:18 | | 4-4 | 0 | 10 CAMARA T 2pt FG fast break in the paint, dunk, made (2) |
| 18:18 | | | | 15 WHEELER S assist (1) |
| 17:50 | 5 WILLIAMS E foul offensive (1 - 1) | | | 10 CAMARA T foul drawn (1) |
| 17:50 | 5 WILLIAMS E turnover offensive (1) | | | |
| 17:50 | 5 WILLIAMS E substitution out | | | |
| 17:50 | 12 GRAVES M substitution out | | | |
| 17:50 | 0 DAYS D substitution in | | | |
| 17:50 | 1 SMART J substitution in | | | |
| 17:36 | | | | 5 EDWARDS A 3pt FG , jump shot missed |
| 17:33 | 2 WATFORD T defensive rebound (2) | | | |
| 17:21 | 4 MAYS S 2pt FG in the paint, layup missed | | | |
| 17:18 | | | | 10 CAMARA T defensive rebound (3) |
| 17:10 | | | | 10 CAMARA T 3pt FG , jump shot missed |
| 17:06 | 4 MAYS S defensive rebound (1) | | | |
| 17:03 | 1 SMART J 2pt FG fast break in the paint, jump shot made (2) | 6-4 | 2 | |
| 17:03 | 1 SMART J foul drawn (1) | | | 10 CAMARA T foul shooting (1 - 1) |
| 17:03 | 0 DAYS D substitution out | | | |
| 17:03 | 21 COOPER C substitution in | | | |
| 17:03 | 1 SMART J free throw fast break 1 - 1 made (3) | 7-4 | 3 | |
| 16:54 | | | | 2 HARRIS J 3pt FG , jump shot missed |
| 16:51 | 14 TAYLOR M defensive rebound (1) | | | |
| 16:38 | 21 COOPER C turnover lost ball (1) | | | |
| 16:29 | 14 TAYLOR M foul personal (1 - 2) | | | 5 EDWARDS A foul drawn (1) |
| 16:25 | 4 MAYS S steal (1) | | | 10 CAMARA T turnover lost ball (1) |
| 16:07 | 21 COOPER C 2pt FG in the paint, layup made (2) | 9-4 | 5 | |
| 16:07 | 1 SMART J assist (1) | | | |
| 15:59 | | | | 15 WHEELER S 3pt FG , jump shot missed |
| 15:56 | 1 SMART J defensive rebound (1) | | | |
| 15:48 | 1 SMART J 2pt FG in the paint, layup missed | | | |
| 15:45 | | | | 10 CAMARA T defensive rebound (4) |
| 15:20 | | 9-6 | 3 | 20 HAMMONDS R 2pt FG outside the paint, jump shot made (2) |



Official Basketball Play by Play - First Half
Georgia at LSU
 03/07/20 Maravich Assembly Center, Baton Rouge, LA
 2019-20 Men's Basketball

Game Time: 1:00 PM
Game Duration: 1:53
Attendance: 11,697

Officials: Joe Lindsay, K.B. Burdett, Jr., Gerald Williams

| Game Time | LSU | Score | Diff | UGA |
|-----------|---|--------------|-----------|---|
| 15:06 | 2 WATFORD T turnover lost ball (1) | | | 2 HARRIS J steal (1) |
| 15:02 | | 9-8 | 1 | 2 HARRIS J 2pt FG fast break in the paint, layup made (4) |
| 14:50 | 4 MAYS S 2pt FG in the paint, dunk, made (4) | 11-8 | 3 | |
| 14:39 | | | | 5 EDWARDS A 2pt FG outside the paint, jump shot missed |
| 14:36 | 4 MAYS S defensive rebound (2) | | | |
| 14:29 | 2 WATFORD T 3pt FG , jump shot missed | | | |
| 14:26 | | | | 20 HAMMONDS R defensive rebound (2) |
| 14:23 | 1 SMART J foul personal (1 - 3) | | | 15 WHEELER S foul drawn (1) |
| 14:23 | Timeout media | | | |
| 14:23 | 21 COOPER C substitution out | | | |
| 14:23 | 5 WILLIAMS E substitution in | | | |
| 14:23 | | | | 2 HARRIS J substitution out |
| 14:23 | | | | 14 FAGAN T substitution in |
| 14:23 | | | | 10 CAMARA T substitution out |
| 14:23 | | | | 3 BROWN C substitution in |
| 14:09 | | | | 5 EDWARDS A 2pt FG in the paint, layup missed |
| 14:04 | | | | 3 BROWN C offensive rebound (1) |
| 14:04 | | 11-10 | 1 | 3 BROWN C 2pt FG in the paint, layup made (2) |
| 13:51 | 5 WILLIAMS E foul drawn (1) | | | 20 HAMMONDS R foul personal (1 - 2) |
| 13:40 | 14 TAYLOR M turnover lost ball (1) | | | 3 BROWN C steal (1) |
| 13:21 | | | | 5 EDWARDS A 2pt FG in the paint, layup missed |
| 13:17 | | | | 20 HAMMONDS R offensive rebound (3) |
| 13:17 | | 11-12 | -1 | 20 HAMMONDS R 2pt FG in the paint, layup made (4) |
| 13:01 | 1 SMART J foul drawn (2) | | | 15 WHEELER S foul personal (1 - 3) |
| 13:01 | 2 WATFORD T substitution out | | | |
| 13:01 | 15 HYATT A substitution in | | | |
| 13:01 | | | | 15 WHEELER S substitution out |
| 13:01 | | | | 0 GRESHAM JR. D substitution in |
| 12:57 | 14 TAYLOR M 3pt FG , jump shot made (3) | 14-12 | 2 | |
| 12:57 | 1 SMART J assist (2) | | | |
| 12:30 | | | | 3 BROWN C 2pt FG in the paint, jump shot blocked |
| 12:30 | 15 HYATT A block (1) | | | |
| 12:25 | | | | 14 FAGAN T offensive rebound (1) |
| 12:23 | | 14-14 | 0 | 14 FAGAN T 2pt FG in the paint, layup made (2) |
| 12:23 | | | | 20 HAMMONDS R assist (1) |
| 12:09 | 4 MAYS S 3pt FG , jump shot made (7) | 17-14 | 3 | |
| 12:09 | 5 WILLIAMS E assist (1) | | | |
| 11:50 | 1 SMART J foul drawn (3) | | | 3 BROWN C foul offensive (1 - 4) |
| 11:50 | | | | 3 BROWN C turnover offensive (1) |
| 11:50 | Timeout media | | | |
| 11:36 | 15 HYATT A 3pt FG , jump shot made (3) | 20-14 | 6 | |
| 11:36 | 5 WILLIAMS E assist (2) | | | |
| 11:18 | | 20-17 | 3 | 5 EDWARDS A 3pt FG , jump shot made (3) |
| 11:18 | | | | 0 GRESHAM JR. D assist (1) |
| 11:06 | 1 SMART J 2pt FG in the paint, jump shot missed | | | |
| 11:03 | | | | 14 FAGAN T defensive rebound (2) |
| 10:39 | 5 WILLIAMS E substitution out | | | |
| 10:39 | 2 WATFORD T substitution in | | | |
| 10:35 | | | | 5 EDWARDS A 3pt FG , jump shot missed |



Official Basketball Play by Play - First Half
Georgia at LSU
 03/07/20 Maravich Assembly Center, Baton Rouge, LA
 2019-20 Men's Basketball

Game Time: 1:00 PM
Game Duration: 1:53
Attendance: 11,697

Officials: Joe Lindsay, K.B. Burdett, Jr., Gerald Williams

| Game Time | LSU | Score | Diff | UGA |
|-----------|---|--------------|-----------|--|
| 10:32 | 1 SMART J defensive rebound (2) | | | |
| 10:23 | 4 MAYS S 2pt FG in the paint, layup made (9) | 22-17 | 5 | |
| 09:57 | | | | 5 EDWARDS A turnover lost ball (1) |
| 09:57 | | | | 3 BROWN C substitution out |
| 09:57 | | | | 14 FAGAN T substitution out |
| 09:57 | | | | 2 HARRIS J substitution in |
| 09:57 | | | | 10 CAMARA T substitution in |
| 09:57 | 4 MAYS S substitution out | | | |
| 09:57 | 12 GRAVES M substitution in | | | |
| 09:33 | 12 GRAVES M turnover lost ball (1) | | | 20 HAMMONDS R steal (1) |
| 09:31 | | | | 2 HARRIS J turnover travel (1) |
| 09:13 | 2 WATFORD T 2pt FG in the paint, layup made (2) | 24-17 | 7 | |
| 09:13 | 1 SMART J assist (3) | | | |
| 08:59 | | 24-19 | 5 | 5 EDWARDS A 2pt FG in the paint, dunk, made (5) |
| 08:59 | | | | 10 CAMARA T assist (1) |
| 08:26 | 1 SMART J 2pt FG in the paint, layup made (5) | 26-19 | 7 | |
| 08:05 | | | | 5 EDWARDS A 2pt FG in the paint, jump shot blocked |
| 08:05 | 2 WATFORD T block (1) | | | |
| 08:01 | 1 SMART J defensive rebound (3) | | | |
| 07:59 | 15 HYATT A 2pt FG fast break in the paint, layup made (5) | 28-19 | 9 | |
| 07:40 | 2 WATFORD T steal (1) | | | 20 HAMMONDS R turnover bad pass (1) |
| 07:36 | 14 TAYLOR M 2pt FG fast break in the paint, alleyoop made (5) | 30-19 | 11 | |
| 07:36 | 1 SMART J assist (4) | | | |
| 07:36 | | | | Timeout 30 Sec |
| 07:36 | 14 TAYLOR M substitution out | | | |
| 07:36 | 15 HYATT A substitution out | | | |
| 07:36 | 4 MAYS S substitution in | | | |
| 07:36 | 5 WILLIAMS E substitution in | | | |
| 07:36 | | | | 0 GRESHAM JR. D substitution out |
| 07:36 | | | | 5 EDWARDS A substitution out |
| 07:36 | | | | 20 HAMMONDS R substitution out |
| 07:36 | | | | 14 FAGAN T substitution in |
| 07:36 | | | | 15 WHEELER S substitution in |
| 07:36 | | | | 30 PEAKE M substitution in |
| 07:21 | | 30-21 | 9 | 14 FAGAN T 2pt FG in the paint, jump shot made (4) |
| 06:52 | 2 WATFORD T 3pt FG , jump shot missed | | | |
| 06:47 | | | | 2 HARRIS J defensive rebound (1) |
| 06:40 | | | | 15 WHEELER S 2pt FG in the paint, layup missed |
| 06:37 | | | | 15 WHEELER S offensive rebound (1) |
| 06:34 | | | | 10 CAMARA T 2pt FG in the paint, jump shot missed |
| 06:29 | 2 WATFORD T defensive rebound (3) | | | |
| 06:24 | 2 WATFORD T 2pt FG in the paint, layup missed | | | |
| 06:21 | | | | 14 FAGAN T defensive rebound (3) |
| 05:55 | | 30-23 | 7 | 2 HARRIS J 2pt FG in the paint, layup made (6) |
| 05:55 | | | | 15 WHEELER S assist (2) |
| 05:34 | 5 WILLIAMS E 2pt FG in the paint, jump shot made (4) | 32-23 | 9 | |
| 05:34 | 1 SMART J assist (5) | | | |
| 05:25 | | | | 2 HARRIS J 3pt FG , jump shot missed |
| 05:22 | 5 WILLIAMS E defensive rebound (1) | | | |



Official Basketball Play by Play - First Half
Georgia at LSU
 03/07/20 Maravich Assembly Center, Baton Rouge, LA
 2019-20 Men's Basketball

Game Time: 1:00 PM
Game Duration: 1:53
Attendance: 11,697

Officials: Joe Lindsay, K.B. Burdett, Jr., Gerald Williams

| Game Time | LSU | Score | Diff | UGA |
|-----------|--|--------------|-----------|--|
| 05:07 | 12 GRAVES M 2pt FG outside the paint, jump shot made (2) | 34-23 | 11 | |
| 04:55 | 5 WILLIAMS E steal (1) | | | 10 CAMARA T turnover lost ball (2) |
| 04:48 | 4 MAYS S foul drawn (1) | | | 2 HARRIS J foul personal (1 - 5) |
| 04:48 | 2 WATFORD T substitution out | | | |
| 04:48 | 5 WILLIAMS E substitution out | | | |
| 04:48 | 12 GRAVES M substitution out | | | |
| 04:48 | 14 TAYLOR M substitution in | | | |
| 04:48 | 15 HYATT A substitution in | | | |
| 04:48 | 21 COOPER C substitution in | | | |
| 04:48 | | | | 10 CAMARA T substitution out |
| 04:48 | | | | 14 FAGAN T substitution out |
| 04:48 | | | | 30 PEAKE M substitution out |
| 04:48 | | | | 5 EDWARDS A substitution in |
| 04:48 | | | | 20 HAMMONDS R substitution in |
| 04:48 | | | | 24 HOWARD R substitution in |
| 04:44 | 4 MAYS S 3pt FG , jump shot made (12) | 37-23 | 14 | |
| 04:31 | | | | 5 EDWARDS A 3pt FG , jump shot missed |
| 04:28 | 1 SMART J defensive rebound (4) | | | |
| 04:10 | 14 TAYLOR M foul drawn (1) | | | 24 HOWARD R foul shooting (1 - 6) |
| 04:10 | 14 TAYLOR M free throw 1 - 2 made (6) | 38-23 | 15 | |
| 04:10 | 14 TAYLOR M free throw 2 - 2 made (7) | 39-23 | 16 | |
| 03:58 | | | | 15 WHEELER S 2pt FG in the paint, jump shot missed |
| 03:55 | 4 MAYS S defensive rebound (3) | | | |
| 03:53 | 4 MAYS S turnover (1) | | | |
| 03:53 | Timeout media | | | |
| 03:42 | 15 HYATT A foul shooting (1 - 4) | | | 20 HAMMONDS R foul drawn (1) |
| 03:42 | | 39-24 | 15 | 20 HAMMONDS R free throw 1 - 2 made (5) |
| 03:42 | 15 HYATT A substitution out | | | |
| 03:42 | 2 WATFORD T substitution in | | | |
| 03:42 | 21 COOPER C substitution out | | | |
| 03:42 | 5 WILLIAMS E substitution in | | | |
| 03:42 | | 39-25 | 14 | 20 HAMMONDS R free throw 2 - 2 made (6) |
| 03:22 | 1 SMART J 3pt FG , jump shot made (8) | 42-25 | 17 | |
| 03:22 | 2 WATFORD T assist (1) | | | |
| 02:58 | | 42-28 | 14 | 15 WHEELER S 3pt FG , jump shot made (3) |
| 02:58 | | | | 20 HAMMONDS R assist (2) |
| 02:44 | 14 TAYLOR M 3pt FG , jump shot missed | | | |
| 02:41 | | | | 24 HOWARD R defensive rebound (1) |
| 02:35 | 5 WILLIAMS E foul shooting (2 - 5) | | | 20 HAMMONDS R foul drawn (2) |
| 02:35 | | 42-29 | 13 | 20 HAMMONDS R free throw 1 - 2 made (7) |
| 02:35 | 5 WILLIAMS E substitution out | | | |
| 02:35 | 21 COOPER C substitution in | | | |
| 02:35 | | | | 2 HARRIS J substitution out |
| 02:35 | | | | 14 FAGAN T substitution in |
| 02:35 | | 42-30 | 12 | 20 HAMMONDS R free throw 2 - 2 made (8) |
| 02:06 | 1 SMART J 2pt FG outside the paint, jump shot missed | | | |
| 02:04 | 2 WATFORD T offensive rebound (4) | | | |
| 02:04 | turnover shot clock (7) | | | |
| 01:47 | | | | 15 WHEELER S 2pt FG in the paint, layup missed |



Official Basketball Play by Play - First Half
Georgia at LSU
 03/07/20 Maravich Assembly Center, Baton Rouge, LA
 2019-20 Men's Basketball

Game Time: 1:00 PM
Game Duration: 1:53
Attendance: 11,697

Officials: Joe Lindsay, K.B. Burdett, Jr., Gerald Williams

| Game Time | LSU | Score | Diff | UGA |
|----------------------|--|--------------|-----------|---|
| 01:44 | | | | 24 HOWARD R offensive rebound (2) |
| 01:44 | | 42-32 | 10 | 24 HOWARD R 2pt FG in the paint, layup made (2) |
| 01:35 | 4 MAYS S 3pt FG , jump shot made (15) | 45-32 | 13 | |
| 01:35 | 1 SMART J assist (6) | | | |
| 01:10 | | 45-34 | 11 | 5 EDWARDS A 2pt FG in the paint, layup made (7) |
| 00:55 | 14 TAYLOR M foul drawn (2) | | | 20 HAMMONDS R foul shooting (2 - 7) |
| 00:55 | 1 SMART J substitution out | | | |
| 00:55 | 12 GRAVES M substitution in | | | |
| 00:55 | 14 TAYLOR M free throw 1 - 3 made (8) | 46-34 | 12 | |
| 00:55 | 14 TAYLOR M free throw 2 - 3 missed | | | |
| 00:55 | offensive dead ball rebound (1) | | | |
| 00:55 | 14 TAYLOR M free throw 3 - 3 made (9) | 47-34 | 13 | |
| 00:32 | | | | 20 HAMMONDS R 2pt FG in the paint, jump shot missed |
| 00:32 | 2 WATFORD T defensive rebound (5) | | | |
| 00:32 | 2 WATFORD T foul drawn (1) | | | 24 HOWARD R foul personal (2 - 8) |
| 00:32 | 2 WATFORD T 1&1 free throw 1 made (3) | 48-34 | 14 | |
| 00:32 | 2 WATFORD T 1&1 free throw 2 made (4) | 49-34 | 15 | |
| 00:13 | 14 TAYLOR M steal (1) | | | 14 FAGAN T turnover bad pass (1) |
| 00:07 | Timeout 30 Sec | | | |
| 00:07 | 21 COOPER C substitution out | | | |
| 00:07 | 5 WILLIAMS E substitution in | | | |
| 00:07 | 14 TAYLOR M substitution out | | | |
| 00:07 | 1 SMART J substitution in | | | |
| 00:02 | 12 GRAVES M 2pt FG outside the paint, jump shot missed | | | |
| 00:00 | | | | 20 HAMMONDS R defensive rebound (4) |
| END OF PERIOD | | | | |
| LSU 49-34 UGA | | | | |



Georgia at LSU

03/07/20 Maravich Assembly Center, Baton Rouge, LA
2019-20 Men's Basketball

Game Time: 1:00 PM
Game Duration: 1:53
Attendance: 11,697

Officials: Joe Lindsay, K.B. Burdett, Jr., Gerald Williams

Georgia - 34

| NO. | Name | Min | FG | | | 3P | | | FT | | | Rebounds | | | Fouls | | TP | AS | TO | ST | Blocks | | +/- |
|---------------|---------------------|---------|-------|------|-----|----|----|-----|----|----|----|----------|---|---|-------|-----|-----|----|----|----|--------|--|-----|
| | | | M-A | M-A | M-A | OR | DR | TOT | PF | FD | BS | BA | | | | | | | | | | | |
| 20 | Rayshaun Hammonds | F 17:12 | 2-4 | 0-1 | 4-4 | 1 | 3 | 4 | 2 | 2 | 8 | 2 | 1 | 1 | 0 | 0 | -15 | | | | | | |
| 2 | Jordan Harris | G 12:59 | 3-5 | 0-2 | 0-0 | 0 | 1 | 1 | 1 | 0 | 6 | 0 | 1 | 1 | 0 | -11 | | | | | | | |
| 5 | Anthony Edwards | 17:12 | 3-10 | 1-4 | 0-0 | 0 | 0 | 0 | 0 | 1 | 7 | 0 | 1 | 0 | 0 | -15 | | | | | | | |
| 10 | Toumani Camara | 10:46 | 1-4 | 0-1 | 0-0 | 2 | 2 | 4 | 1 | 1 | 2 | 1 | 2 | 0 | 0 | -9 | | | | | | | |
| 15 | Sahvir Wheeler | 14:35 | 1-6 | 1-3 | 0-0 | 1 | 0 | 1 | 1 | 1 | 3 | 2 | 0 | 0 | 0 | -3 | | | | | | | |
| 3 | Christian Brown | 04:26 | 1-2 | 0-0 | 0-0 | 1 | 0 | 1 | 1 | 0 | 2 | 0 | 1 | 1 | 0 | -2 | | | | | | | |
| 14 | Tye Fagan | 09:49 | 2-2 | 0-0 | 0-0 | 1 | 2 | 3 | 0 | 0 | 4 | 0 | 1 | 0 | 0 | -4 | | | | | | | |
| 0 | Donnell Gresham Jr. | 05:25 | 0-0 | 0-0 | 0-0 | 0 | 0 | 0 | 0 | 0 | 0 | 1 | 0 | 0 | 0 | -12 | | | | | | | |
| 30 | Mike Peake | 02:48 | 0-0 | 0-0 | 0-0 | 0 | 0 | 0 | 0 | 0 | 0 | 0 | 0 | 0 | 0 | 0 | | | | | | | |
| 24 | Rodney Howard | 04:48 | 1-1 | 0-0 | 0-0 | 1 | 1 | 2 | 2 | 0 | 2 | 0 | 0 | 0 | 0 | -4 | | | | | | | |
| Team | | | | | | | | | | | 0 | 0 | 0 | 0 | 0 | 0 | 0 | 0 | 0 | 0 | 0 | | |
| Totals | | | 14-34 | 2-11 | 4-4 | 7 | 9 | 16 | 8 | 5 | 34 | 6 | 7 | 3 | 0 | 2 | -15 | | | | | | |

| Shooting By Period | | |
|--------------------|-------|--------|
| 1st FG% | 14-34 | 41.2% |
| 3PT% | 2-11 | 18.2% |
| FT% | 4-4 | 100% |
| GM FG% | 14-34 | 41.2% |
| 3PT% | 2-11 | 18.2% |
| FT% | 4-4 | 100.0% |

Dead Ball Rebounds: 0, 0

Technical Fouls::NONE

LSU - 49

| NO. | Name | Min | FG | | | 3P | | | FT | | | Rebounds | | | Fouls | | TP | AS | TO | ST | Blocks | | +/- |
|---------------|-----------------|---------|-------|------|-----|----|----|-----|----|----|----|----------|---|---|-------|----|----|----|----|----|--------|--|-----|
| | | | M-A | M-A | M-A | OR | DR | TOT | PF | FD | BS | BA | | | | | | | | | | | |
| 2 | Trendon Watford | F 16:32 | 1-4 | 0-2 | 2-2 | 1 | 4 | 5 | 0 | 1 | 4 | 1 | 1 | 1 | 1 | 0 | 7 | | | | | | |
| 5 | Emmitt Williams | F 09:56 | 2-2 | 0-0 | 0-0 | 0 | 1 | 1 | 2 | 1 | 4 | 2 | 1 | 1 | 0 | -2 | | | | | | | |
| 4 | Skylar Mays | G 17:39 | 6-8 | 3-4 | 0-0 | 0 | 3 | 3 | 0 | 1 | 15 | 0 | 1 | 1 | 0 | 9 | | | | | | | |
| 12 | Marshall Graves | G 08:14 | 1-2 | 0-0 | 0-0 | 0 | 0 | 0 | 0 | 0 | 2 | 0 | 1 | 0 | 0 | 10 | | | | | | | |
| 14 | Marlon Taylor | G 17:05 | 2-3 | 1-2 | 4-5 | 0 | 1 | 1 | 1 | 2 | 9 | 0 | 1 | 1 | 0 | 15 | | | | | | | |
| 0 | Darius Days | 00:47 | 0-0 | 0-0 | 0-0 | 0 | 0 | 0 | 0 | 0 | 0 | 0 | 0 | 0 | 0 | 2 | | | | | | | |
| 1 | Javonte Smart | 17:02 | 3-6 | 1-1 | 1-1 | 0 | 4 | 4 | 1 | 3 | 8 | 6 | 0 | 0 | 0 | 11 | | | | | | | |
| 21 | Courtese Cooper | 06:14 | 1-1 | 0-0 | 0-0 | 0 | 0 | 0 | 0 | 0 | 2 | 0 | 1 | 0 | 0 | 7 | | | | | | | |
| 15 | Aundre Hyatt | 06:31 | 2-2 | 1-1 | 0-0 | 0 | 0 | 0 | 1 | 0 | 5 | 0 | 0 | 0 | 1 | 0 | 16 | | | | | | |
| Team | | | | | | | | | | | 0 | 0 | 0 | 0 | 0 | 0 | 0 | 1 | 0 | 0 | 0 | | |
| Totals | | | 18-28 | 6-10 | 7-8 | 1 | 13 | 14 | 5 | 8 | 49 | 9 | 7 | 4 | 2 | 0 | 15 | | | | | | |

| Shooting By Period | | |
|--------------------|-------|-------|
| 1st FG% | 18-28 | 64.3% |
| 3PT% | 6-10 | 60.0% |
| FT% | 7-8 | 87.5% |
| GM FG% | 18-28 | 64.3% |
| 3PT% | 6-10 | 60.0% |
| FT% | 7-8 | 87.5% |

Dead Ball Rebounds: 1, 0

Technical Fouls::NONE

| | UGA | LSU |
|------------------|---------------|---------------|
| Biggest lead | 1 (1st 13:17) | 17 (1st 3:22) |
| Best Scoring Run | 7(1st 1:44) | 9(1st 4:10) |
| Lead Changes | 2 | |
| Times Tied | 3 | |
| Time with Lead | 00:20 | 17:38 |

| Points from | UGA | LSU |
|---------------|-----|-----|
| Turnovers | 8 | 12 |
| Paint | 22 | 20 |
| Second Chance | 10 | 0 |
| Fast Breaks | 4 | 7 |
| Bench | 8 | 15 |

| | Period by Period Scoring | |
|-----|--------------------------|-----|
| | 1st | TOT |
| UGA | 34 | 34 |
| LSU | 49 | 49 |



Period 2

Quarter Starters:

| | | | | | |
|------------|------------|-------------|-------------|--------------|---------------|
| LSU | 1 Smart J | 2 Watford T | 4 Mays S | 5 Williams E | 14 Taylor M |
| UGA | 2 Harris J | 5 Edwards A | 10 Camara T | 15 Wheeler S | 20 Hammonds R |

| Game Time | LSU | Score | Diff | UGA |
|-----------|--|--------------|-----------|--|
| 20:00 | 12 GRAVES M substitution out | | | |
| 20:00 | 14 TAYLOR M substitution in | | | |
| 20:00 | | | | 14 FAGAN T substitution out |
| 20:00 | | | | 24 HOWARD R substitution out |
| 20:00 | | | | 2 HARRIS J substitution in |
| 20:00 | | | | 10 CAMARA T substitution in |
| 19:48 | | 49-36 | 13 | 20 HAMMONDS R 2pt FG in the paint, jump shot made (10) |
| 19:28 | 14 TAYLOR M 3pt FG , jump shot missed | | | |
| 19:24 | | | | 20 HAMMONDS R defensive rebound (5) |
| 19:20 | | | | 5 EDWARDS A 3pt FG , jump shot missed |
| 19:17 | defensive rebound (15) | | | |
| 19:17 | 2 WATFORD T substitution out | | | |
| 19:17 | 15 HYATT A substitution in | | | |
| 19:17 | 5 WILLIAMS E substitution out | | | |
| 19:17 | 21 COOPER C substitution in | | | |
| 19:03 | 21 COOPER C foul drawn (1) | | | 2 HARRIS J foul personal (2 - 1) |
| 18:47 | 14 TAYLOR M 2pt FG in the paint, jump shot made (11) | 51-36 | 15 | |
| 18:35 | | | | 2 HARRIS J 3pt FG , jump shot missed |
| 18:34 | | | | 20 HAMMONDS R offensive rebound (6) |
| 18:34 | 15 HYATT A foul personal (2 - 1) | | | 20 HAMMONDS R foul drawn (3) |
| 18:26 | | | | 5 EDWARDS A 3pt FG , jump shot missed |
| 18:23 | | | | 10 CAMARA T offensive rebound (5) |
| 18:22 | 15 HYATT A steal (1) | | | 10 CAMARA T turnover lost ball (3) |
| 18:02 | 15 HYATT A turnover travel (1) | | | |
| 18:02 | 21 COOPER C substitution out | | | |
| 18:02 | 2 WATFORD T substitution in | | | |
| 17:55 | 15 HYATT A foul shooting (3 - 2) | | | 15 WHEELER S foul drawn (2) |
| 17:55 | | 51-37 | 14 | 15 WHEELER S free throw 1 - 2 made (4) |
| 17:55 | 15 HYATT A substitution out | | | |
| 17:55 | 5 WILLIAMS E substitution in | | | |
| 17:55 | | 51-38 | 13 | 15 WHEELER S free throw 2 - 2 made (5) |
| 17:36 | 2 WATFORD T foul drawn (2) | | | 20 HAMMONDS R foul shooting (3 - 2) |
| 17:36 | 2 WATFORD T free throw 1 - 2 made (5) | 52-38 | 14 | |
| 17:36 | 2 WATFORD T free throw 2 - 2 missed | | | |
| 17:34 | | | | 20 HAMMONDS R defensive rebound (7) |
| 17:30 | | | | 5 EDWARDS A 3pt FG , jump shot missed |
| 17:27 | 2 WATFORD T defensive rebound (6) | | | |
| 17:27 | 2 WATFORD T foul drawn (3) | | | 10 CAMARA T foul personal (2 - 3) |
| 17:04 | 2 WATFORD T foul offensive (1 - 3) | | | 10 CAMARA T foul drawn (2) |
| 17:04 | 2 WATFORD T turnover offensive (2) | | | |
| 16:50 | 5 WILLIAMS E foul shooting (3 - 4) | | | 2 HARRIS J foul drawn (1) |
| 16:50 | | 52-39 | 13 | 2 HARRIS J free throw 1 - 2 made (7) |
| 16:50 | | | | 2 HARRIS J free throw 2 - 2 missed |



Official Basketball Play by Play - Second Half
Georgia at LSU
 03/07/20 Maravich Assembly Center, Baton Rouge, LA
 2019-20 Men's Basketball

Game Time: 1:00 PM
Game Duration: 1:53
Attendance: 11,697

Officials: Joe Lindsay, K.B. Burdett, Jr., Gerald Williams

| Game Time | LSU | Score | Diff | UGA |
|-----------|--|--------------|-----------|---|
| 16:50 | 5 WILLIAMS E defensive rebound (2) | | | |
| 16:50 | 5 WILLIAMS E foul drawn (2) | | | 10 CAMARA T foul personal (3 - 4) |
| 16:37 | 5 WILLIAMS E foul drawn (3) | | | 10 CAMARA T foul personal (4 - 5) |
| 16:37 | | | | 10 CAMARA T substitution out |
| 16:37 | | | | 3 BROWN C substitution in |
| 16:34 | 2 WATFORD T foul drawn (4) | | | 20 HAMMONDS R foul personal (4 - 6) |
| 16:34 | | | | 20 HAMMONDS R substitution out |
| 16:34 | | | | 14 FAGAN T substitution in |
| 16:25 | 2 WATFORD T 2pt FG in the paint, layup made (7) | 54-39 | 15 | |
| 16:25 | 5 WILLIAMS E assist (3) | | | |
| 16:15 | | 54-41 | 13 | 3 BROWN C 2pt FG in the paint, layup made (4) |
| 16:15 | | | | 2 HARRIS J assist (1) |
| 16:03 | 5 WILLIAMS E 3pt FG , jump shot made (7) | 57-41 | 16 | |
| 16:03 | 1 SMART J assist (7) | | | |
| 15:56 | | | | 15 WHEELER S 2pt FG in the paint, layup missed |
| 15:53 | 4 MAYS S defensive rebound (4) | | | |
| 15:48 | 14 TAYLOR M 2pt FG fast break in the paint, dunk, made (13) | 59-41 | 18 | |
| 15:48 | 2 WATFORD T assist (2) | | | |
| 15:48 | | | | Timeout 30 Sec |
| 15:48 | | | | 2 HARRIS J substitution out |
| 15:48 | | | | 24 HOWARD R substitution in |
| 15:30 | | | | 5 EDWARDS A 3pt FG , jump shot missed |
| 15:25 | 1 SMART J defensive rebound (5) | | | |
| 15:22 | 14 TAYLOR M 2pt FG in the paint, layup missed | | | |
| 15:20 | 5 WILLIAMS E offensive rebound (3) | | | |
| 15:19 | 5 WILLIAMS E 2pt FG second chance in the paint, layup missed | | | |
| 15:19 | 14 TAYLOR M offensive rebound (2) | | | |
| 15:18 | 14 TAYLOR M 2pt FG in the paint, layup made (15) | 61-41 | 20 | |
| 14:56 | | 61-43 | 18 | 5 EDWARDS A 2pt FG in the paint, layup made (9) |
| 14:47 | 14 TAYLOR M 2pt FG outside the paint, jump shot blocked | | | |
| 14:47 | | | | 24 HOWARD R block (1) |
| 14:43 | | | | 14 FAGAN T defensive rebound (4) |
| 14:24 | | | | 24 HOWARD R 2pt FG in the paint, layup missed |
| 14:21 | 5 WILLIAMS E defensive rebound (4) | | | |
| 14:17 | 1 SMART J turnover bad pass (1) | | | 3 BROWN C steal (2) |
| 14:10 | | | | 14 FAGAN T 3pt FG , jump shot missed |
| 14:06 | 4 MAYS S defensive rebound (5) | | | |
| 13:47 | 14 TAYLOR M 3pt FG , jump shot made (18) | 64-43 | 21 | |
| 13:47 | 1 SMART J assist (8) | | | |
| 13:45 | Timeout 30 Sec | | | |
| 13:45 | | | | 15 WHEELER S substitution out |
| 13:45 | | | | 0 GRESHAM JR. D substitution in |
| 13:34 | | | | 0 GRESHAM JR. D turnover bad pass (1) |
| 13:08 | 2 WATFORD T 2pt FG in the paint, layup made (9) | 66-43 | 23 | |
| 13:08 | 5 WILLIAMS E assist (4) | | | |
| 12:55 | 2 WATFORD T foul shooting (2 - 5) | | | 5 EDWARDS A foul drawn (2) |
| 12:55 | | 66-44 | 22 | 5 EDWARDS A free throw 1 - 2 made (10) |
| 12:55 | | 66-45 | 21 | 5 EDWARDS A free throw 2 - 2 made (11) |
| 12:37 | 1 SMART J turnover bad pass (2) | | | 5 EDWARDS A steal (1) |



Official Basketball Play by Play - Second Half
Georgia at LSU
 03/07/20 Maravich Assembly Center, Baton Rouge, LA
 2019-20 Men's Basketball

Game Time: 1:00 PM
Game Duration: 1:53
Attendance: 11,697

Officials: Joe Lindsay, K.B. Burdett, Jr., Gerald Williams

| Game Time | LSU | Score | Diff | UGA |
|-----------|--|--------------|-----------|---|
| 12:32 | | 66-47 | 19 | 14 FAGAN T 2pt FG fast break in the paint, layup made (6) |
| 12:32 | | | | 5 EDWARDS A assist (1) |
| 12:21 | 2 WATFORD T 2pt FG in the paint, jump shot missed | | | |
| 12:18 | | | | 0 GRESHAM JR. D defensive rebound (1) |
| 12:13 | | 66-49 | 17 | 14 FAGAN T 2pt FG fast break in the paint, layup made (8) |
| 12:00 | 14 TAYLOR M 2pt FG in the paint, layup missed | | | |
| 12:00 | 14 TAYLOR M offensive rebound (3) | | | |
| 12:00 | 14 TAYLOR M foul drawn (3) | | | 3 BROWN C foul shooting (2 - 7) |
| 12:00 | Timeout media | | | |
| 12:00 | 14 TAYLOR M free throw 1 - 2 made (19) | 67-49 | 18 | |
| 12:00 | 14 TAYLOR M free throw 2 - 2 missed | | | |
| 11:58 | | | | 14 FAGAN T defensive rebound (5) |
| 11:50 | | | | 5 EDWARDS A 2pt FG outside the paint, jump shot missed |
| 11:45 | 2 WATFORD T defensive rebound (7) | | | |
| 11:23 | 14 TAYLOR M 3pt FG , jump shot missed | | | |
| 11:20 | 14 TAYLOR M offensive rebound (4) | | | |
| 11:16 | 1 SMART J 2pt FG in the paint, jump shot missed | | | |
| 11:12 | | | | 14 FAGAN T defensive rebound (6) |
| 11:07 | | | | 14 FAGAN T 3pt FG , jump shot missed |
| 11:06 | | | | 0 GRESHAM JR. D offensive rebound (2) |
| 11:06 | 4 MAYS S foul personal (1 - 6) | | | 0 GRESHAM JR. D foul drawn (1) |
| 11:03 | | | | 5 EDWARDS A 3pt FG , jump shot missed |
| 11:02 | defensive rebound (27) | | | |
| 10:48 | 1 SMART J 2pt FG outside the paint, jump shot missed | | | |
| 10:45 | | | | 24 HOWARD R defensive rebound (3) |
| 10:44 | 1 SMART J steal (1) | | | 5 EDWARDS A turnover lost ball (2) |
| 10:32 | 4 MAYS S foul drawn (2) | | | 0 GRESHAM JR. D foul personal (1 - 8) |
| 10:32 | | | | 0 GRESHAM JR. D substitution out |
| 10:32 | | | | 14 FAGAN T substitution out |
| 10:32 | | | | 24 HOWARD R substitution out |
| 10:32 | | | | 2 HARRIS J substitution in |
| 10:32 | | | | 15 WHEELER S substitution in |
| 10:32 | | | | 20 HAMMONDS R substitution in |
| 10:32 | 4 MAYS S 1&1 free throw 1 made (16) | 68-49 | 19 | |
| 10:32 | 4 MAYS S 1&1 free throw 2 made (17) | 69-49 | 20 | |
| 10:13 | | 69-52 | 17 | 3 BROWN C 3pt FG , jump shot made (7) |
| 10:13 | | | | 2 HARRIS J assist (2) |
| 09:59 | 2 WATFORD T 2pt FG in the paint, jump shot made (11) | 71-52 | 19 | |
| 09:59 | 5 WILLIAMS E assist (5) | | | |
| 09:36 | | | | 5 EDWARDS A 3pt FG , jump shot missed |
| 09:34 | | | | 3 BROWN C offensive rebound (2) |
| 09:21 | | | | 20 HAMMONDS R 2pt FG outside the paint, jump shot missed |
| 09:18 | 2 WATFORD T defensive rebound (8) | | | |
| 08:53 | 1 SMART J 3pt FG , jump shot made (11) | 74-52 | 22 | |
| 08:42 | | | | 15 WHEELER S turnover bad pass (1) |
| 08:42 | 2 WATFORD T substitution out | | | |
| 08:42 | 15 HYATT A substitution in | | | |
| 08:29 | 5 WILLIAMS E foul drawn (4) | | | 15 WHEELER S foul personal (2 - 9) |
| 08:29 | 5 WILLIAMS E 1&1 free throw 1 missed | | | |



Official Basketball Play by Play - Second Half
Georgia at LSU
 03/07/20 Maravich Assembly Center, Baton Rouge, LA
 2019-20 Men's Basketball

Game Time: 1:00 PM
Game Duration: 1:53
Attendance: 11,697

Officials: Joe Lindsay, K.B. Burdett, Jr., Gerald Williams

| Game Time | LSU | Score | Diff | UGA |
|-----------|--|--------------|-----------|---|
| 08:28 | | | | 5 EDWARDS A defensive rebound (1) |
| 08:15 | | 74-54 | 20 | 15 WHEELER S 2pt FG in the paint, layup made (7) |
| 07:52 | 4 MAYS S 3pt FG , jump shot missed | | | |
| 07:47 | | | | 3 BROWN C defensive rebound (3) |
| 07:38 | | | | 20 HAMMONDS R 2pt FG in the paint, layup blocked |
| 07:38 | 15 HYATT A block (2) | | | |
| 07:38 | | | | offensive rebound (30) |
| 07:38 | Timeout media | | | |
| 07:38 | 5 WILLIAMS E substitution out | | | |
| 07:38 | 2 WATFORD T substitution in | | | |
| 07:38 | | | | 3 BROWN C substitution out |
| 07:38 | | | | 10 CAMARA T substitution in |
| 07:21 | | 74-56 | 18 | 5 EDWARDS A 2pt FG in the paint, layup made (13) |
| 06:53 | 2 WATFORD T 2pt FG in the paint, layup made (13) | 76-56 | 20 | |
| 06:53 | 1 SMART J assist (9) | | | |
| 06:31 | | | | 15 WHEELER S 3pt FG , jump shot missed |
| 06:26 | 1 SMART J defensive rebound (6) | | | |
| 06:01 | 2 WATFORD T 2pt FG outside the paint, jump shot missed | | | |
| 05:58 | | | | 5 EDWARDS A defensive rebound (2) |
| 05:54 | | | | 5 EDWARDS A 3pt FG , jump shot missed |
| 05:51 | 2 WATFORD T defensive rebound (9) | | | |
| 05:46 | 4 MAYS S 2pt FG in the paint, layup missed | | | |
| 05:43 | 14 TAYLOR M offensive rebound (5) | | | |
| 05:43 | 14 TAYLOR M 2pt FG in the paint, layup made (21) | 78-56 | 22 | |
| 05:34 | | | | 2 HARRIS J 3pt FG , jump shot missed |
| 05:30 | 14 TAYLOR M defensive rebound (6) | | | |
| 05:27 | 14 TAYLOR M foul drawn (4) | | | 2 HARRIS J foul shooting (3 - 10) |
| 05:27 | 14 TAYLOR M free throw fast break 1 - 2 made (22) | 79-56 | 23 | |
| 05:27 | | | | 2 HARRIS J substitution out |
| 05:27 | | | | 10 CAMARA T substitution out |
| 05:27 | | | | 14 FAGAN T substitution in |
| 05:27 | | | | 30 PEAKE M substitution in |
| 05:27 | 14 TAYLOR M free throw fast break 2 - 2 made (23) | 80-56 | 24 | |
| 05:14 | | | | 20 HAMMONDS R 2pt FG in the paint, layup missed |
| 05:11 | | | | 15 WHEELER S offensive rebound (2) |
| 05:07 | | 80-58 | 22 | 15 WHEELER S 2pt FG in the paint, jump shot made (9) |
| 04:57 | 1 SMART J foul offensive (2 - 7) | | | 15 WHEELER S foul drawn (3) |
| 04:57 | 1 SMART J turnover offensive (3) | | | |
| 04:57 | 15 HYATT A substitution out | | | |
| 04:57 | 5 WILLIAMS E substitution in | | | |
| 04:48 | | | | 30 PEAKE M 2pt FG outside the paint, jump shot missed |
| 04:45 | 2 WATFORD T defensive rebound (10) | | | |
| 04:29 | 14 TAYLOR M 3pt FG , jump shot made (26) | 83-58 | 25 | |
| 04:29 | 1 SMART J assist (10) | | | |
| 04:12 | 14 TAYLOR M foul personal (2 - 8) | | | 5 EDWARDS A foul drawn (3) |
| 04:12 | | | | 30 PEAKE M substitution out |
| 04:12 | | | | 24 HOWARD R substitution in |
| 04:12 | | | | 5 EDWARDS A 1&1 free throw 1 missed |
| 04:10 | 2 WATFORD T defensive rebound (11) | | | |



Official Basketball Play by Play - Second Half
Georgia at LSU
 03/07/20 Maravich Assembly Center, Baton Rouge, LA
 2019-20 Men's Basketball

Game Time: 1:00 PM
Game Duration: 1:53
Attendance: 11,697

Officials: Joe Lindsay, K.B. Burdett, Jr., Gerald Williams

| Game Time | LSU | Score | Diff | UGA |
|-----------|--|--------------|-----------|---|
| 04:02 | 1 SMART J foul drawn (4) | | | 5 EDWARDS A foul shooting (1 - 11) |
| 04:02 | 1 SMART J free throw 1 - 2 made (12) | 84-58 | 26 | |
| 04:02 | 1 SMART J free throw 2 - 2 made (13) | 85-58 | 27 | |
| 03:38 | | | | 15 WHEELER S 3pt FG , jump shot missed |
| 03:35 | 4 MAYS S defensive rebound (6) | | | |
| 03:13 | 14 TAYLOR M 2pt FG in the paint, jump shot made (28) | 87-58 | 29 | |
| 03:06 | | | | 5 EDWARDS A 3pt FG , jump shot missed |
| 03:03 | 14 TAYLOR M defensive rebound (7) | | | |
| 03:00 | 14 TAYLOR M 2pt FG fast break in the paint, alleyoop made (30) | 89-58 | 31 | |
| 03:00 | 2 WATFORD T assist (3) | | | |
| 02:59 | | | | Timeout 30 Sec |
| 02:59 | 2 WATFORD T substitution out | | | |
| 02:59 | 15 HYATT A substitution in | | | |
| 02:59 | | | | 15 WHEELER S substitution out |
| 02:59 | | | | 0 GRESHAM JR. D substitution in |
| 02:46 | | | | 20 HAMMONDS R 2pt FG in the paint, jump shot missed |
| 02:42 | | | | 0 GRESHAM JR. D offensive rebound (3) |
| 02:41 | | | | 0 GRESHAM JR. D 2pt FG in the paint, layup missed |
| 02:36 | 1 SMART J defensive rebound (7) | | | |
| 02:33 | 14 TAYLOR M 3pt FG , jump shot missed | | | |
| 02:29 | | | | 5 EDWARDS A defensive rebound (3) |
| 02:17 | | | | 20 HAMMONDS R 2pt FG outside the paint, jump shot missed |
| 02:12 | 5 WILLIAMS E defensive rebound (5) | | | |
| 02:09 | 14 TAYLOR M turnover bad pass (2) | | | 0 GRESHAM JR. D steal (1) |
| 02:04 | | 89-60 | 29 | 20 HAMMONDS R 2pt FG fast break in the paint, layup made (12) |
| 01:44 | 4 MAYS S 2pt FG in the paint, layup made (19) | 91-60 | 31 | |
| 01:36 | | 91-62 | 29 | 5 EDWARDS A 2pt FG fast break in the paint, layup made (15) |
| 01:22 | Timeout 30 Sec | | | |
| 01:22 | 4 MAYS S substitution out | | | |
| 01:22 | 5 WILLIAMS E substitution out | | | |
| 01:22 | 12 GRAVES M substitution in | | | |
| 01:22 | 21 COOPER C substitution in | | | |
| 01:22 | | | | 24 HOWARD R substitution out |
| 01:22 | | | | 11 ETTER J substitution in |
| 01:06 | 1 SMART J 3pt FG , jump shot missed | | | |
| 01:02 | | | | 11 ETTER J defensive rebound (1) |
| 00:58 | 14 TAYLOR M foul personal (3 - 9) | | | 5 EDWARDS A foul drawn (4) |
| 00:58 | 14 TAYLOR M substitution out | | | |
| 00:58 | 10 BISHOP J substitution in | | | |
| 00:58 | | | | 5 EDWARDS A 1&1 free throw 1 missed |
| 00:56 | 15 HYATT A defensive rebound (1) | | | |
| 00:44 | 12 GRAVES M 3pt FG , jump shot made (5) | 94-62 | 32 | |
| 00:44 | 10 BISHOP J assist (1) | | | |
| 00:38 | 21 COOPER C foul shooting (1 - 10) | | | 5 EDWARDS A foul drawn (5) |
| 00:38 | | 94-63 | 31 | 5 EDWARDS A free throw fast break 1 - 2 made (16) |
| 00:38 | 12 GRAVES M substitution out | | | |
| 00:38 | 5 WILLIAMS E substitution in | | | |
| 00:38 | | | | 0 GRESHAM JR. D substitution out |



Official Basketball Play by Play - Second Half
Georgia at LSU
03/07/20 Maravich Assembly Center, Baton Rouge, LA
2019-20 Men's Basketball

Game Time: 1:00 PM
Game Duration: 1:53
Attendance: 11,697

Officials: Joe Lindsay, K.B. Burdett, Jr., Gerald Williams

| Game Time | LSU | Score | Diff | UGA |
|----------------------|---------------------------------------|--------------|-----------|---|
| 00:38 | | | | 32 TURNIER S substitution in |
| 00:38 | | 94-64 | 30 | 5 EDWARDS A free throw fast break 2 - 2 made (17) |
| 00:14 | 10 BISHOP J 3pt FG , jump shot missed | | | |
| 00:13 | | | | 20 HAMMONDS R defensive rebound (8) |
| END OF GAME | | | | |
| LSU 94-64 UGA | | | | |



Georgia at LSU

03/07/20 Maravich Assembly Center, Baton Rouge, LA
2019-20 Men's Basketball

Game Time: 1:00 PM
Game Duration: 1:53
Attendance: 11,697

Officials: Joe Lindsay, K.B. Burdett, Jr., Gerald Williams

Georgia - 30

| NO. | Name | F | Min | FG | 3P | FT | Rebounds | | | Fouls | | TP | AS | TO | ST | Blocks | | +/- |
|---------------|---------------------|---|-------|-------|------|------|----------|----|-----|-------|----|----|----|----|----|--------|----|-----|
| | | | | M-A | M-A | M-A | OR | DR | TOT | PF | FD | | | | | BS | BA | |
| 20 | Rayshaun Hammonds | F | 13:58 | 2-7 | 0-0 | 0-0 | 1 | 3 | 4 | 2 | 1 | 4 | 0 | 0 | 0 | 0 | 1 | -10 |
| 2 | Jordan Harris | G | 09:17 | 0-2 | 0-2 | 1-2 | 0 | 0 | 0 | 2 | 1 | 1 | 2 | 0 | 0 | 0 | 0 | -8 |
| 5 | Anthony Edwards | | 20:00 | 3-12 | 0-8 | 4-6 | 0 | 3 | 3 | 1 | 4 | 10 | 1 | 1 | 1 | 0 | 0 | -15 |
| 10 | Toumani Camara | | 05:34 | 0-0 | 0-0 | 0-0 | 1 | 0 | 1 | 3 | 1 | 0 | 0 | 1 | 0 | 0 | 0 | -1 |
| 15 | Sahvir Wheeler | | 13:48 | 2-5 | 0-2 | 2-2 | 1 | 0 | 1 | 1 | 2 | 6 | 0 | 1 | 0 | 0 | 0 | -19 |
| 3 | Christian Brown | | 08:59 | 2-2 | 1-1 | 0-0 | 1 | 1 | 2 | 1 | 0 | 5 | 0 | 0 | 1 | 0 | 0 | -7 |
| 14 | Tye Fagan | | 11:29 | 2-4 | 0-2 | 0-0 | 0 | 3 | 3 | 0 | 0 | 4 | 0 | 0 | 0 | 0 | 0 | -12 |
| 24 | Rodney Howard | | 08:06 | 0-1 | 0-0 | 0-0 | 0 | 1 | 1 | 0 | 0 | 0 | 0 | 0 | 0 | 1 | 0 | -4 |
| 0 | Donnell Gresham Jr. | | 05:34 | 0-1 | 0-0 | 0-0 | 2 | 1 | 3 | 1 | 1 | 0 | 0 | 1 | 1 | 0 | 0 | 3 |
| 30 | Mike Peake | | 01:15 | 0-1 | 0-0 | 0-0 | 0 | 0 | 0 | 0 | 0 | 0 | 0 | 0 | 0 | 0 | 0 | -2 |
| 11 | Jaxon Etter | | 01:22 | 0-0 | 0-0 | 0-0 | 0 | 1 | 1 | 0 | 0 | 0 | 0 | 0 | 0 | 0 | 0 | -1 |
| 32 | Stan Turnier | | 00:38 | 0-0 | 0-0 | 0-0 | 0 | 0 | 0 | 0 | 0 | 0 | 0 | 0 | 0 | 0 | 0 | 1 |
| Team | | | | | | | 1 | 0 | 1 | | | 0 | | 0 | | | | |
| Totals | | | | 11-35 | 1-15 | 7-10 | 7 | 13 | 20 | 11 | 10 | 30 | 3 | 4 | 3 | 1 | 1 | -15 |

| Shooting By Period | | |
|--------------------|-------|-------|
| 2nd FG% | 11-35 | 31.4% |
| 3PT% | 1-15 | 6.7% |
| FT% | 7-10 | 70% |
| GM FG% | 11-35 | 31.4% |
| 3PT% | 1-15 | 6.7% |
| FT% | 7-10 | 70.0% |

Dead Ball Rebounds: 0, 0

Technical Fouls::NONE

LSU - 45

| NO. | Name | F | Min | FG | 3P | FT | Rebounds | | | Fouls | | TP | AS | TO | ST | Blocks | | +/- |
|---------------|-----------------|---|-------|-------|------|------|----------|----|-----|-------|----|----|----|----|----|--------|----|-----|
| | | | | M-A | M-A | M-A | OR | DR | TOT | PF | FD | | | | | BS | BA | |
| 2 | Trendon Watford | F | 14:42 | 4-6 | 0-0 | 1-2 | 0 | 6 | 6 | 2 | 3 | 9 | 2 | 1 | 0 | 0 | 0 | 16 |
| 5 | Emmitt Williams | F | 15:13 | 1-2 | 1-1 | 0-1 | 1 | 3 | 4 | 1 | 3 | 3 | 3 | 0 | 0 | 0 | 0 | 10 |
| 4 | Skylar Mays | G | 18:38 | 1-3 | 0-1 | 2-2 | 0 | 3 | 3 | 1 | 1 | 4 | 0 | 0 | 0 | 0 | 0 | 14 |
| 12 | Marshall Graves | G | 00:44 | 1-1 | 1-1 | 0-0 | 0 | 0 | 0 | 0 | 0 | 3 | 0 | 0 | 0 | 0 | 0 | 2 |
| 14 | Marlon Taylor | G | 19:02 | 8-14 | 2-5 | 3-4 | 4 | 2 | 6 | 2 | 2 | 21 | 0 | 1 | 0 | 0 | 1 | 14 |
| 1 | Javonte Smart | | 20:00 | 1-4 | 1-2 | 2-2 | 0 | 3 | 3 | 1 | 1 | 5 | 4 | 3 | 1 | 0 | 0 | 15 |
| 15 | Aundre Hyatt | | 08:06 | 0-0 | 0-0 | 0-0 | 0 | 1 | 1 | 2 | 0 | 0 | 0 | 1 | 1 | 1 | 0 | 0 |
| 21 | Courtese Cooper | | 02:37 | 0-0 | 0-0 | 0-0 | 0 | 0 | 0 | 1 | 1 | 0 | 0 | 0 | 0 | 0 | 0 | 3 |
| 10 | James Bishop | | 00:58 | 0-1 | 0-1 | 0-0 | 0 | 0 | 0 | 0 | 0 | 0 | 1 | 0 | 0 | 0 | 0 | 1 |
| Team | | | | | | | 0 | 2 | 2 | | | 0 | | 0 | | | | |
| Totals | | | | 16-31 | 5-11 | 8-11 | 5 | 20 | 25 | 10 | 11 | 45 | 10 | 6 | 2 | 1 | 1 | 15 |

| Shooting By Period | | |
|--------------------|-------|-------|
| 2nd FG% | 16-31 | 51.6% |
| 3PT% | 5-11 | 45.5% |
| FT% | 8-11 | 72.7% |
| GM FG% | 16-31 | 51.6% |
| 3PT% | 5-11 | 45.5% |
| FT% | 8-11 | 72.7% |

Dead Ball Rebounds: 0, 0

Technical Fouls::NONE

| | UGA | LSU |
|------------------|---------------|---------------|
| Biggest lead | 0 (1st 20:00) | 32 (2nd 0:44) |
| Best Scoring Run | 6(2nd 12:13) | 9(2nd 3:00) |
| Lead Changes | 0 | |
| Times Tied | 0 | |
| Time with Lead | 00:00 | 19:48 |

| Points from | UGA | LSU |
|---------------|-----|-----|
| Turnovers | 7 | 4 |
| Paint | 20 | 22 |
| Second Chance | 4 | 5 |
| Fast Breaks | 10 | 6 |
| Bench | 9 | 5 |

| | Period by Period Scoring | |
|-----|--------------------------|-----|
| | 2nd | TOT |
| UGA | 30 | 30 |
| LSU | 45 | 45 |



Georgia at LSU

03/07/20 Maravich Assembly Center, Baton Rouge, LA
2019-20 Men's Basketball

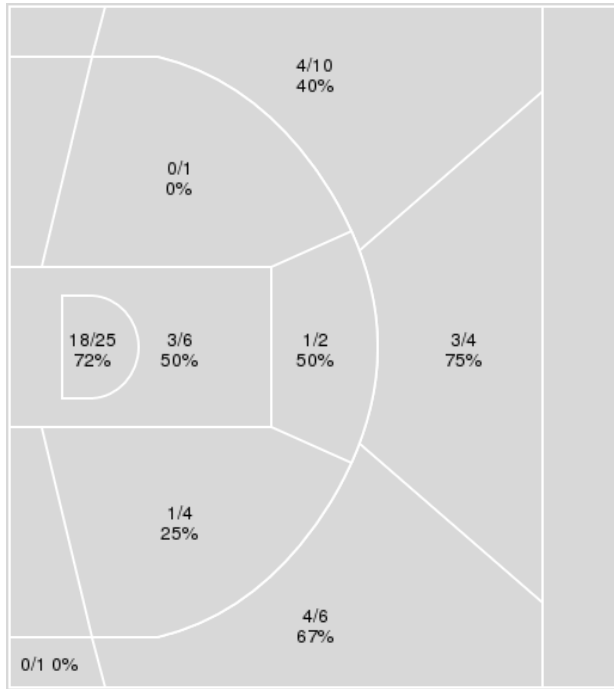
Game Time: 1:00 PM
Game Duration: 1:53
Attendance: 11,697

Officials: Joe Lindsay, K.B. Burdett, Jr., Gerald Williams

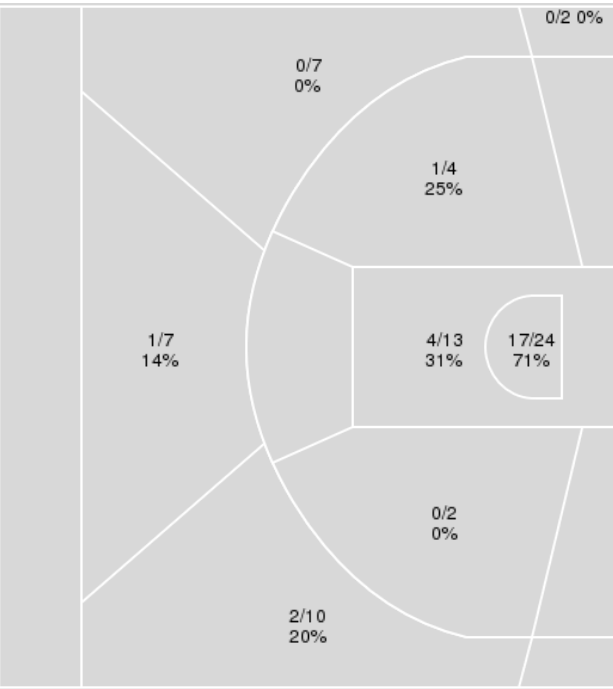
{ Players => 0, 1, 2, 3, 4, 5, 10, 11, 12, 14, 15, 20, 21, 24; } FG Types
=> All; Results => All;

{ Players => 0, 1, 2, 3, 4, 5, 10, 11, 14, 15, 20, 24, 25, 30, 32; } FG
Types => All; Results => All;

LSU



Georgia



| LSU | M/A | % |
|-------------|-------|----|
| Field Goals | 34/59 | 58 |
| 2 Points | 23/38 | 61 |
| 3 Points | 11/21 | 52 |
| Free Throws | 15/19 | 79 |

| Georgia | M/A | % |
|-------------|-------|----|
| Field Goals | 25/69 | 36 |
| 2 Points | 22/43 | 51 |
| 3 Points | 3/26 | 12 |
| Free Throws | 11/14 | 79 |



Georgia at LSU

03/07/20 Maravich Assembly Center, Baton Rouge, LA
2019-20 Men's Basketball

Game Time: 1:00 PM
Game Duration: 1:53
Attendance: 11,697

Officials: Joe Lindsay, K.B. Burdett, Jr., Gerald Williams

Georgia

| No | Name | Mins | | Score | | Points Diff | | Points per Min | | Assists | | Rebounds | | Steals | | Turnovers | |
|----|---------------------|-------|-------|---------|---------|-------------|-----|----------------|------|---------|-----|----------|-----|--------|-----|-----------|-----|
| | | On | Off | On | Off | On | Off | On | Off | On | Off | On | Off | On | Off | On | Off |
| 0 | Donnell Gresham Jr. | 10:59 | 29:01 | 18 - 27 | 46 - 67 | -9 | -21 | 1.64 | 1.59 | 4 | 5 | 10 | 26 | 3 | 3 | 6 | 5 |
| 2 | Jordan Harris | 22:16 | 17:44 | 34 - 53 | 30 - 41 | -19 | -11 | 1.53 | 1.69 | 6 | 3 | 19 | 17 | 2 | 4 | 6 | 5 |
| 3 | Christian Brown | 13:25 | 26:35 | 24 - 33 | 40 - 61 | -9 | -21 | 1.79 | 1.50 | 5 | 4 | 14 | 22 | 3 | 3 | 5 | 6 |
| 5 | Anthony Edwards | 37:12 | 02:48 | 60 - 90 | 4 - 4 | -30 | 0 | 1.61 | 1.43 | 8 | 1 | 33 | 3 | 6 | 0 | 10 | 1 |
| 10 | Toumani Camara | 16:20 | 23:40 | 21 - 31 | 43 - 63 | -10 | -20 | 1.29 | 1.82 | 3 | 6 | 14 | 22 | 2 | 4 | 5 | 6 |
| 11 | Jaxon Etter | 01:22 | 38:38 | 2 - 3 | 62 - 91 | -1 | -29 | 1.46 | 1.60 | 0 | 9 | 2 | 34 | 0 | 6 | 0 | 11 |
| 14 | Tye Fagan | 21:18 | 18:42 | 36 - 52 | 28 - 42 | -16 | -14 | 1.69 | 1.50 | 5 | 4 | 20 | 16 | 4 | 2 | 6 | 5 |
| 15 | Sahvir Wheeler | 28:23 | 11:37 | 45 - 67 | 19 - 27 | -22 | -8 | 1.59 | 1.64 | 5 | 4 | 25 | 11 | 3 | 3 | 5 | 6 |
| 20 | Rayshaun Hammonds | 31:10 | 08:50 | 50 - 75 | 14 - 19 | -25 | -5 | 1.60 | 1.58 | 6 | 3 | 27 | 9 | 4 | 2 | 8 | 3 |
| 24 | Rodney Howard | 12:54 | 27:06 | 23 - 31 | 41 - 63 | -8 | -22 | 1.78 | 1.51 | 2 | 7 | 11 | 25 | 3 | 3 | 3 | 8 |
| 30 | Mike Peake | 04:03 | 35:57 | 6 - 8 | 58 - 86 | -2 | -28 | 1.48 | 1.61 | 1 | 8 | 4 | 32 | 0 | 6 | 1 | 10 |
| 32 | Stan Turnier | 00:38 | 39:22 | 1 - 0 | 63 - 94 | 1 | -31 | 1.58 | 1.60 | 0 | 9 | 1 | 35 | 0 | 6 | 0 | 11 |

LSU

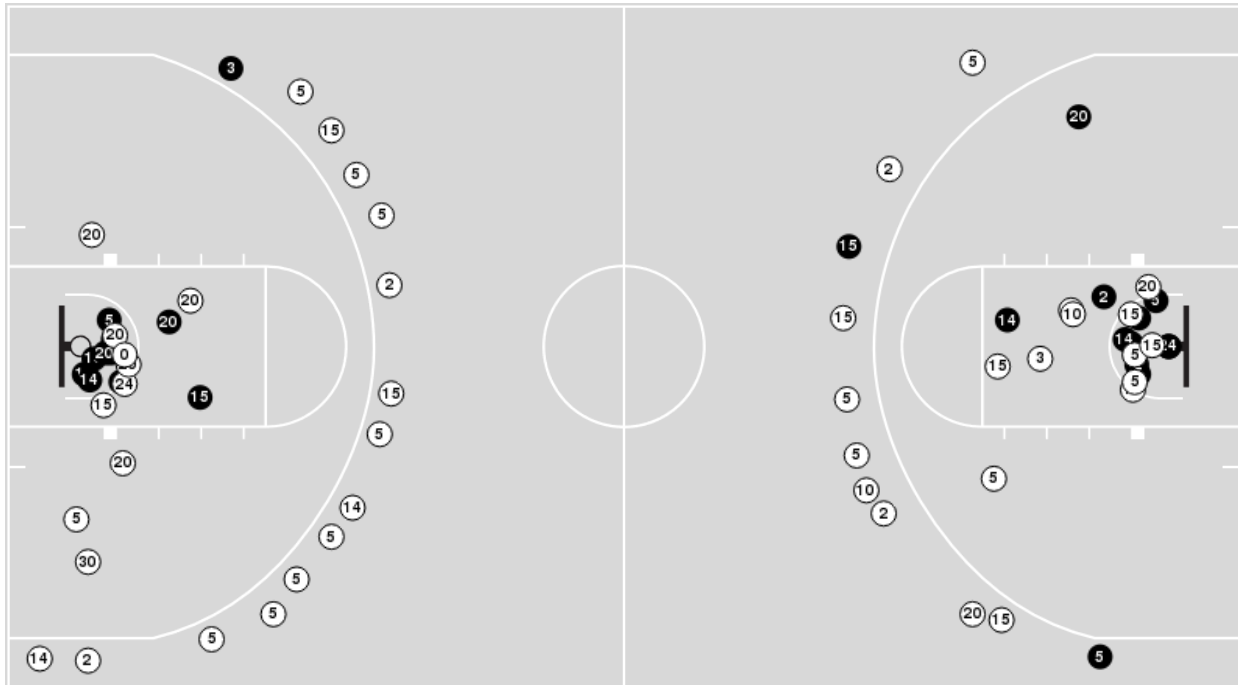
| No | Name | Mins | | Score | | Points Diff | | Points per Min | | Assists | | Rebounds | | Steals | | Turnovers | |
|----|-----------------|-------|-------|---------|---------|-------------|-----|----------------|------|---------|-----|----------|-----|--------|-----|-----------|-----|
| | | On | Off | On | Off | On | Off | On | Off | On | Off | On | Off | On | Off | On | Off |
| 0 | Darius Days | 00:47 | 39:13 | 2 - 0 | 92 - 64 | 2 | 28 | 2.55 | 2.35 | 0 | 19 | 2 | 37 | 0 | 6 | 0 | 13 |
| 1 | Javonte Smart | 37:02 | 02:58 | 86 - 60 | 8 - 4 | 26 | 4 | 2.32 | 2.70 | 19 | 0 | 37 | 2 | 5 | 1 | 12 | 1 |
| 2 | Trendon Watford | 31:14 | 08:46 | 73 - 50 | 21 - 14 | 23 | 7 | 2.34 | 2.40 | 15 | 4 | 34 | 5 | 5 | 1 | 10 | 3 |
| 4 | Skylar Mays | 36:17 | 03:43 | 83 - 60 | 11 - 4 | 23 | 7 | 2.29 | 2.96 | 16 | 3 | 37 | 2 | 5 | 1 | 12 | 1 |
| 5 | Emmitt Williams | 25:09 | 14:51 | 54 - 46 | 40 - 18 | 8 | 22 | 2.15 | 2.69 | 13 | 6 | 23 | 16 | 2 | 4 | 6 | 7 |
| 10 | James Bishop | 00:58 | 39:02 | 3 - 2 | 91 - 62 | 1 | 29 | 3.10 | 2.33 | 1 | 18 | 1 | 38 | 0 | 6 | 0 | 13 |
| 12 | Marshall Graves | 08:58 | 31:02 | 23 - 11 | 71 - 53 | 12 | 18 | 2.57 | 2.29 | 4 | 15 | 6 | 33 | 3 | 3 | 2 | 11 |
| 14 | Marlon Taylor | 36:07 | 03:53 | 87 - 58 | 7 - 6 | 29 | 1 | 2.41 | 1.80 | 17 | 2 | 36 | 3 | 5 | 1 | 13 | 0 |
| 15 | Aundre Hyatt | 14:37 | 25:23 | 37 - 21 | 57 - 43 | 16 | 14 | 2.53 | 2.25 | 7 | 12 | 11 | 28 | 2 | 4 | 5 | 8 |
| 21 | Courtese Cooper | 08:51 | 31:09 | 22 - 12 | 72 - 52 | 10 | 20 | 2.49 | 2.31 | 3 | 16 | 8 | 31 | 3 | 3 | 5 | 8 |



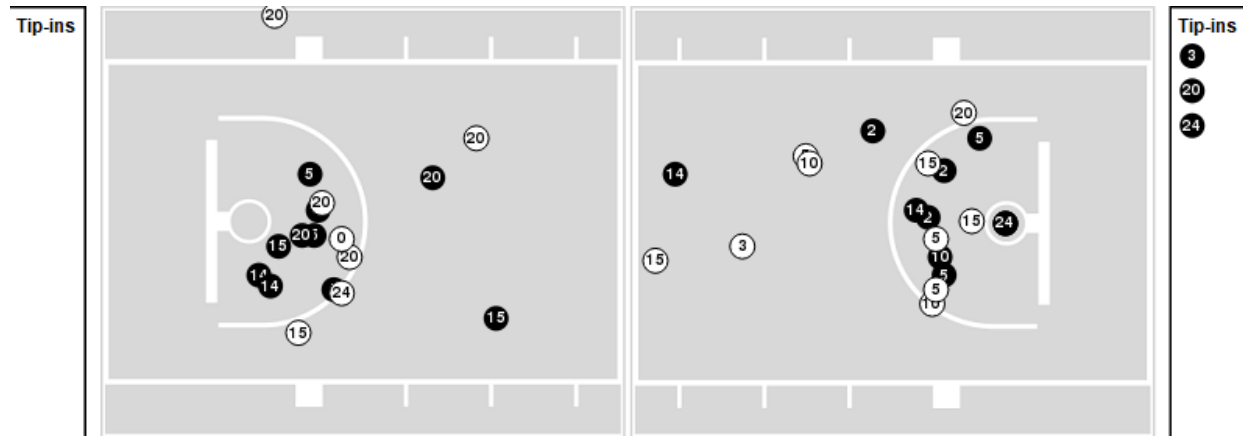
Players => 0, 1, 2, 3, 4, 5, 10, 11, 14, 15, 20, 24, 25, 30, 32FG Types=>AllResults=>All

Georgia

All Field Goals



Blow Up Chart



● Made ○ Missed N - Player Number

| Georgia | M/A | % |
|-------------|-------|----|
| Field Goals | 25/69 | 36 |
| 2 Points | 22/43 | 51 |
| 3 Points | 3/26 | 12 |
| Free Throws | 11/14 | 79 |

| Georgia | M/A | % |
|----------------------|--------------|----|
| Points in the Paint | 42 (21 / 37) | 57 |
| Fast Break Points | 14 (8/9) | 89 |
| Second Chance Points | 14 (7/13) | 54 |
| Effective FG% | 38 | |



Georgia at LSU

03/07/20 Maravich Assembly Center, Baton Rouge, LA
2019-20 Men's Basketball

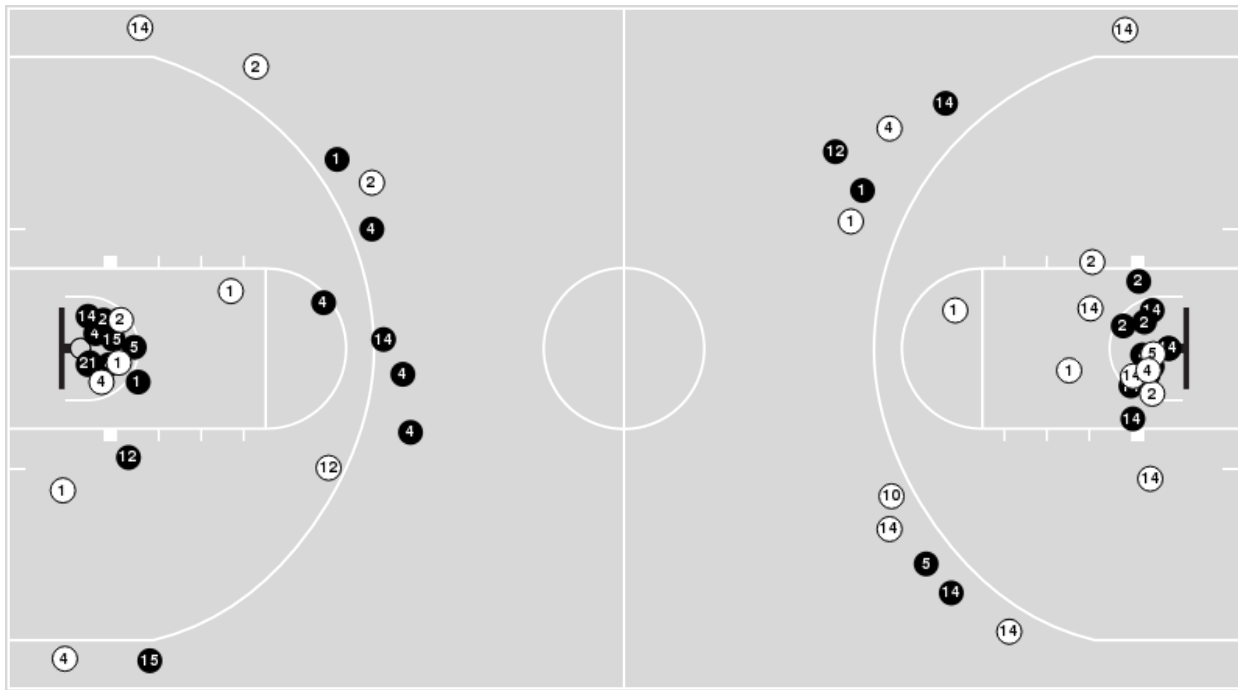
Game Time: 1:00 PM
Game Duration: 1:53
Attendance: 11,697

Officials: Joe Lindsay, K.B. Burdett, Jr., Gerald Williams

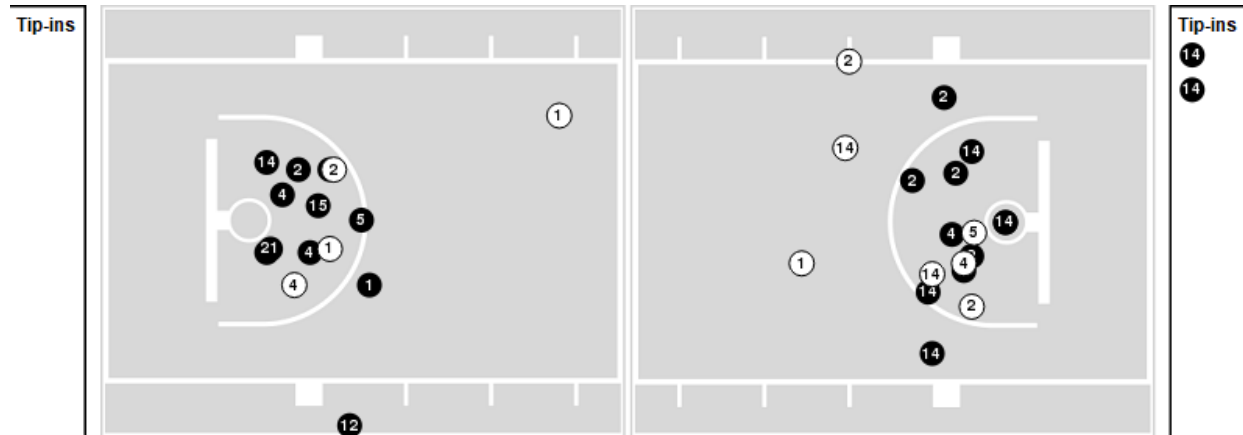
Players => 0, 1, 2, 3, 4, 5, 10, 11, 12, 14, 15, 20, 21, 24FG Types=>AllResults=>All

LSU

All Field Goals



Blow Up Chart



● Made ○ Missed N - Player Number

| LSU | M/A | % |
|-------------|-------|----|
| Field Goals | 34/59 | 58 |
| 2 Points | 23/38 | 61 |
| 3 Points | 11/21 | 52 |
| Free Throws | 15/19 | 79 |

| LSU | M/A | % |
|----------------------|--------------|-----|
| Points in the Paint | 42 (21 / 31) | 68 |
| Fast Break Points | 13 (8/8) | 100 |
| Second Chance Points | 5 (3/6) | 50 |
| Effective FG% | 67 | |



Georgia

| Lineup | Quarter On | Time On | Quarter Off | Time Off | Time on Court | Score | Score Diff | Reb | Stl | Tov | Ass | PPP |
|--|------------|---------|-------------|----------|---------------|-------|------------|-----|-----|-----|-----|--------|
| 2- Harris J/ 5- Edwards A/ 10- Camara T/ 15- Wheeler S/ 20- Hammonds R/ | 1 | 20:00 | 1 | 14:23 | 05:37 | 8-11 | -3 | 6 | 1 | 1 | 1 | 0.7273 |
| 5- Edwards A/ 10- Camara T/ 14- Fagan T/ 15- Wheeler S/ 20- Hammonds R/ | 1 | 14:23 | 1 | 14:23 | 00:00 | 0-0 | 0 | 0 | 0 | 0 | 0 | 0.0000 |
| 3- Brown C/ 5- Edwards A/ 14- Fagan T/ 15- Wheeler S/ 20- Hammonds R/ | 1 | 14:23 | 1 | 13:01 | 01:22 | 4-0 | 4 | 2 | 1 | 0 | 0 | 2.0000 |
| 0- Gresham Jr. D/ 3- Brown C/ 5- Edwards A/ 14- Fagan T/ 20- Hammonds R/ | 1 | 13:01 | 1 | 09:57 | 03:04 | 5-11 | -6 | 2 | 0 | 2 | 2 | 1.0000 |
| 0- Gresham Jr. D/ 2- Harris J/ 5- Edwards A/ 10- Camara T/ 20- Hammonds R/ | 1 | 09:57 | 1 | 07:36 | 02:21 | 2-8 | -6 | 0 | 1 | 2 | 1 | 0.5000 |
| 2- Harris J/ 10- Camara T/ 14- Fagan T/ 15- Wheeler S/ 30- Peake M/ | 1 | 07:36 | 1 | 04:48 | 02:48 | 4-4 | 0 | 3 | 0 | 1 | 1 | 0.8000 |
| 2- Harris J/ 5- Edwards A/ 15- Wheeler S/ 20- Hammonds R/ 24- Howard R/ | 1 | 04:48 | 1 | 02:35 | 02:13 | 6-8 | -2 | 1 | 0 | 0 | 1 | 1.3889 |
| 5- Edwards A/ 14- Fagan T/ 15- Wheeler S/ 20- Hammonds R/ 24- Howard R/ | 1 | 02:35 | 2 | 20:00 | 02:35 | 5-7 | -2 | 2 | 0 | 1 | 0 | 1.1261 |
| 2- Harris J/ 5- Edwards A/ 10- Camara T/ 15- Wheeler S/ 20- Hammonds R/ | 2 | 20:00 | 2 | 16:37 | 03:23 | 5-3 | 2 | 4 | 0 | 1 | 0 | 0.8681 |
| 2- Harris J/ 3- Brown C/ 5- Edwards A/ 15- Wheeler S/ 20- Hammonds R/ | 2 | 16:37 | 2 | 16:34 | 00:03 | 0-0 | 0 | 0 | 0 | 0 | 0 | 0.0000 |
| 2- Harris J/ 3- Brown C/ 5- Edwards A/ 14- Fagan T/ 15- Wheeler S/ | 2 | 16:34 | 2 | 15:48 | 00:46 | 2-7 | -5 | 0 | 0 | 0 | 1 | 1.0000 |
| 3- Brown C/ 5- Edwards A/ 14- Fagan T/ 15- Wheeler S/ 24- Howard R/ | 2 | 15:48 | 2 | 13:45 | 02:03 | 2-5 | -3 | 1 | 1 | 0 | 0 | 0.5000 |
| 0- Gresham Jr. D/ 3- Brown C/ 5- Edwards A/ 14- Fagan T/ 24- Howard R/ | 2 | 13:45 | 2 | 10:32 | 03:13 | 6-3 | 3 | 5 | 1 | 2 | 1 | 0.8721 |
| 2- Harris J/ 3- Brown C/ 5- Edwards A/ 15- Wheeler S/ 20- Hammonds R/ | 2 | 10:32 | 2 | 07:38 | 02:54 | 5-7 | -2 | 4 | 0 | 1 | 1 | 1.2500 |
| 2- Harris J/ 5- Edwards A/ 10- Camara T/ 15- Wheeler S/ 20- Hammonds R/ | 2 | 07:38 | 2 | 05:27 | 02:11 | 2-5 | -3 | 1 | 0 | 0 | 0 | 0.5000 |
| 5- Edwards A/ 14- Fagan T/ 15- Wheeler S/ 20- Hammonds R/ 30- Peake M/ | 2 | 05:27 | 2 | 04:12 | 01:15 | 2-4 | -2 | 1 | 0 | 0 | 0 | 1.0000 |
| 5- Edwards A/ 14- Fagan T/ 15- Wheeler S/ 20- Hammonds R/ 24- Howard R/ | 2 | 04:12 | 2 | 02:59 | 01:13 | 0-6 | -6 | 0 | 0 | 0 | 0 | 0.0000 |
| 0- Gresham Jr. D/ 5- Edwards A/ 14- Fagan T/ 20- Hammonds R/ 24- Howard R/ | 2 | 02:59 | 2 | 01:22 | 01:37 | 4-2 | 2 | 2 | 1 | 0 | 0 | 1.0000 |
| 0- Gresham Jr. D/ 5- Edwards A/ 11- Etter J/ 14- Fagan T/ 20- Hammonds R/ | 2 | 01:22 | 2 | 00:38 | 00:44 | 1-3 | -2 | 1 | 0 | 0 | 0 | 1.1364 |
| 5- Edwards A/ 11- Etter J/ 14- Fagan T/ 20- Hammonds R/ 32- Turnier S/ | 2 | 00:38 | 2 | 00:00 | 00:38 | 1-0 | 1 | 1 | 0 | 0 | 0 | 2.2727 |



LSU

| Lineup | Quarter On | Time On | Quarter Off | Time Off | Time on Court | Score | Score Diff | Reb | Stl | Tov | Ass | PPP |
|---|------------|---------|-------------|----------|---------------|-------|------------|-----|-----|-----|-----|--------|
| 2- Watford T/ 4- Mays S/ 5- Williams E/ 12- Graves M/ 14- Taylor M/ | 1 | 20:00 | 1 | 17:50 | 02:10 | 4-4 | 0 | 1 | 0 | 1 | 0 | 1.0000 |
| 0- Days D/ 1- Smart J/ 2- Watford T/ 4- Mays S/ 14- Taylor M/ | 1 | 17:50 | 1 | 17:03 | 00:47 | 2-0 | 2 | 2 | 0 | 0 | 0 | 1.0000 |
| 1- Smart J/ 2- Watford T/ 4- Mays S/ 14- Taylor M/ 21- Cooper C/ | 1 | 17:03 | 1 | 14:23 | 02:40 | 5-4 | 1 | 3 | 1 | 2 | 1 | 0.7764 |
| 1- Smart J/ 2- Watford T/ 4- Mays S/ 5- Williams E/ 14- Taylor M/ | 1 | 14:23 | 1 | 13:01 | 01:22 | 0-4 | -4 | 0 | 0 | 1 | 0 | 0.0000 |
| 1- Smart J/ 4- Mays S/ 5- Williams E/ 14- Taylor M/ 15- Hyatt A/ | 1 | 13:01 | 1 | 10:39 | 02:22 | 9-5 | 4 | 0 | 0 | 0 | 3 | 2.2500 |
| 1- Smart J/ 2- Watford T/ 4- Mays S/ 14- Taylor M/ 15- Hyatt A/ | 1 | 10:39 | 1 | 09:57 | 00:42 | 2-0 | 2 | 1 | 0 | 0 | 0 | 2.0000 |
| 1- Smart J/ 2- Watford T/ 12- Graves M/ 14- Taylor M/ 15- Hyatt A/ | 1 | 09:57 | 1 | 07:36 | 02:21 | 8-2 | 6 | 1 | 1 | 1 | 2 | 1.6000 |
| 1- Smart J/ 2- Watford T/ 4- Mays S/ 5- Williams E/ 12- Graves M/ | 1 | 07:36 | 1 | 04:48 | 02:48 | 4-4 | 0 | 2 | 1 | 0 | 1 | 1.0000 |
| 1- Smart J/ 4- Mays S/ 14- Taylor M/ 15- Hyatt A/ 21- Cooper C/ | 1 | 04:48 | 1 | 03:42 | 01:06 | 5-1 | 4 | 2 | 0 | 1 | 0 | 1.7361 |
| 1- Smart J/ 2- Watford T/ 4- Mays S/ 14- Taylor M/ 21- Cooper C/ | 1 | 03:42 | 1 | 03:42 | 00:00 | 0-0 | 0 | 0 | 0 | 0 | 0 | 0.0000 |
| 1- Smart J/ 2- Watford T/ 4- Mays S/ 5- Williams E/ 14- Taylor M/ | 1 | 03:42 | 1 | 02:35 | 01:07 | 3-5 | -2 | 0 | 0 | 0 | 1 | 1.5000 |
| 1- Smart J/ 2- Watford T/ 4- Mays S/ 14- Taylor M/ 21- Cooper C/ | 1 | 02:35 | 1 | 00:55 | 01:43 | 3-5 | -2 | 1 | 0 | 1 | 1 | 1.5000 |
| 2- Watford T/ 4- Mays S/ 12- Graves M/ 14- Taylor M/ 21- Cooper C/ | 1 | 00:55 | 1 | 00:07 | 00:45 | 4-0 | 4 | 1 | 1 | 0 | 0 | 1.8182 |
| 2- Watford T/ 4- Mays S/ 5- Williams E/ 12- Graves M/ 14- Taylor M/ | 1 | 00:07 | 1 | 00:07 | 00:00 | 0-0 | 0 | 0 | 0 | 0 | 0 | 0.0000 |
| 1- Smart J/ 2- Watford T/ 4- Mays S/ 5- Williams E/ 12- Graves M/ | 1 | 00:07 | 2 | 20:00 | 00:07 | 0-0 | 0 | 0 | 0 | 0 | 0 | 0.0000 |
| 1- Smart J/ 2- Watford T/ 4- Mays S/ 5- Williams E/ 14- Taylor M/ | 2 | 20:00 | 2 | 19:17 | 00:43 | 0-2 | -2 | 1 | 0 | 0 | 0 | 0.0000 |
| 1- Smart J/ 4- Mays S/ 5- Williams E/ 14- Taylor M/ 15- Hyatt A/ | 2 | 19:17 | 2 | 19:17 | 00:00 | 0-0 | 0 | 0 | 0 | 0 | 0 | 0.0000 |
| 1- Smart J/ 4- Mays S/ 14- Taylor M/ 15- Hyatt A/ 21- Cooper C/ | 2 | 19:17 | 2 | 18:02 | 01:15 | 2-0 | 2 | 0 | 1 | 1 | 0 | 1.0000 |
| 1- Smart J/ 2- Watford T/ 4- Mays S/ 14- Taylor M/ 15- Hyatt A/ | 2 | 18:02 | 2 | 17:55 | 00:07 | 0-1 | -1 | 0 | 0 | 0 | 0 | 0.0000 |
| 1- Smart J/ 2- Watford T/ 4- Mays S/ 5- Williams E/ 14- Taylor M/ | 2 | 17:55 | 2 | 08:42 | 09:13 | 23-15 | 8 | 13 | 1 | 3 | 6 | 1.3039 |
| 1- Smart J/ 4- Mays S/ 5- Williams E/ 14- Taylor M/ 15- Hyatt A/ | 2 | 08:42 | 2 | 07:38 | 01:04 | 0-2 | -2 | 0 | 0 | 0 | 0 | 0.0000 |
| 1- Smart J/ 2- Watford T/ 4- Mays S/ 14- Taylor M/ 15- Hyatt A/ | 2 | 07:38 | 2 | 04:57 | 02:41 | 6-4 | 2 | 4 | 0 | 1 | 1 | 1.2295 |
| 1- Smart J/ 2- Watford T/ 4- Mays S/ 5- Williams E/ 14- Taylor M/ | 2 | 04:57 | 2 | 02:59 | 01:58 | 9-0 | 9 | 4 | 0 | 0 | 2 | 2.3196 |
| 1- Smart J/ 4- Mays S/ 5- Williams E/ 14- Taylor M/ 15- Hyatt A/ | 2 | 02:59 | 2 | 01:22 | 01:37 | 2-4 | -2 | 2 | 0 | 1 | 0 | 0.6667 |
| 1- Smart J/ 12- Graves M/ 14- Taylor M/ 15- Hyatt A/ 21- Cooper C/ | 2 | 01:22 | 2 | 00:58 | 00:24 | 0-0 | 0 | 0 | 0 | 0 | 0 | 0.0000 |
| 1- Smart J/ 10- Bishop J/ 12- Graves M/ 15- Hyatt A/ 21- Cooper C/ | 2 | 00:58 | 2 | 00:38 | 00:20 | 3-1 | 2 | 1 | 0 | 0 | 1 | 3.0000 |
| 1- Smart J/ 5- Williams E/ 10- Bishop J/ 15- Hyatt A/ 21- Cooper C/ | 2 | 00:38 | 2 | 00:00 | 00:38 | 0-1 | -1 | 0 | 0 | 0 | 0 | 0.0000 |



Georgia at LSU

03/07/20 Maravich Assembly Center, Baton Rouge, LA
2019-20 Men's Basketball

Game Time: 1:00 PM
Game Duration: 1:53
Attendance: 11,697

Officials: Joe Lindsay, K.B. Burdett, Jr., Gerald Williams

Georgia

| Lineup | Time | Score | Score Diff | Pts/Min | Reb | Stl | Tov | Ass | PPP |
|--|-------|-------|------------|---------|-----|-----|-----|-----|--------|
| 2- Harris J/ 5- Edwards A/ 10- Camara T/ 15- Wheeler S/ 20- Hammonds R/ | 11:11 | 15-19 | -4 | 1.3413 | 11 | 1 | 2 | 1 | 0.7225 |
| 5- Edwards A/ 14- Fagan T/ 15- Wheeler S/ 20- Hammonds R/ 24- Howard R/ | 03:48 | 5-13 | -8 | 1.3158 | 2 | 0 | 1 | 0 | 0.7267 |
| 0- Gresham Jr. D/ 3- Brown C/ 5- Edwards A/ 14- Fagan T/ 24- Howard R/ | 03:13 | 6-3 | 3 | 1.8653 | 5 | 1 | 2 | 1 | 0.8721 |
| 0- Gresham Jr. D/ 3- Brown C/ 5- Edwards A/ 14- Fagan T/ 20- Hammonds R/ | 03:04 | 5-11 | -6 | 1.6304 | 2 | 0 | 2 | 2 | 1.0000 |
| 2- Harris J/ 3- Brown C/ 5- Edwards A/ 15- Wheeler S/ 20- Hammonds R/ | 02:57 | 5-7 | -2 | 1.6949 | 4 | 0 | 1 | 1 | 1.2500 |
| 2- Harris J/ 10- Camara T/ 14- Fagan T/ 15- Wheeler S/ 30- Peake M/ | 02:48 | 4-4 | 0 | 1.4286 | 3 | 0 | 1 | 1 | 0.8000 |
| 0- Gresham Jr. D/ 2- Harris J/ 5- Edwards A/ 10- Camara T/ 20- Hammonds R/ | 02:21 | 2-8 | -6 | 0.8511 | 0 | 1 | 2 | 1 | 0.5000 |
| 2- Harris J/ 5- Edwards A/ 15- Wheeler S/ 20- Hammonds R/ 24- Howard R/ | 02:13 | 6-8 | -2 | 2.7068 | 1 | 0 | 0 | 1 | 1.3889 |
| 3- Brown C/ 5- Edwards A/ 14- Fagan T/ 15- Wheeler S/ 24- Howard R/ | 02:03 | 2-5 | -3 | 0.9756 | 1 | 1 | 0 | 0 | 0.5000 |
| 0- Gresham Jr. D/ 5- Edwards A/ 14- Fagan T/ 20- Hammonds R/ 24- Howard R/ | 01:37 | 4-2 | 2 | 2.4742 | 2 | 1 | 0 | 0 | 1.0000 |
| 3- Brown C/ 5- Edwards A/ 14- Fagan T/ 15- Wheeler S/ 20- Hammonds R/ | 01:22 | 4-0 | 4 | 2.9268 | 2 | 1 | 0 | 0 | 2.0000 |
| 5- Edwards A/ 14- Fagan T/ 15- Wheeler S/ 20- Hammonds R/ 30- Peake M/ | 01:15 | 2-4 | -2 | 1.6000 | 1 | 0 | 0 | 0 | 1.0000 |
| 2- Harris J/ 3- Brown C/ 5- Edwards A/ 14- Fagan T/ 15- Wheeler S/ | 00:46 | 2-7 | -5 | 2.6087 | 0 | 0 | 0 | 1 | 1.0000 |
| 0- Gresham Jr. D/ 5- Edwards A/ 11- Etter J/ 14- Fagan T/ 20- Hammonds R/ | 00:44 | 1-3 | -2 | 1.3636 | 1 | 0 | 0 | 0 | 1.1364 |
| 5- Edwards A/ 11- Etter J/ 14- Fagan T/ 20- Hammonds R/ 32- Turnier S/ | 00:38 | 1-0 | 1 | 1.5789 | 1 | 0 | 0 | 0 | 2.2727 |
| 5- Edwards A/ 10- Camara T/ 14- Fagan T/ 15- Wheeler S/ 20- Hammonds R/ | 00:00 | 0-0 | 0 | NaN | 0 | 0 | 0 | 0 | 0.0000 |



Georgia at LSU

03/07/20 Maravich Assembly Center, Baton Rouge, LA
2019-20 Men's Basketball

Game Time: 1:00 PM
Game Duration: 1:53
Attendance: 11,697

Officials: Joe Lindsay, K.B. Burdett, Jr., Gerald Williams

LSU

| Lineup | Time | Score | Score Diff | Pts/Min | Reb | Stl | Tov | Ass | PPP |
|---|-------|-------|------------|---------|-----|-----|-----|-----|--------|
| 1- Smart J/ 2- Watford T/ 4- Mays S/ 5- Williams E/ 14- Taylor M/ | 14:23 | 35-26 | 9 | 2.4334 | 18 | 1 | 4 | 9 | 1.3715 |
| 1- Smart J/ 4- Mays S/ 5- Williams E/ 14- Taylor M/ 15- Hyatt A/ | 05:03 | 11-11 | 0 | 2.1782 | 2 | 0 | 1 | 3 | 1.3033 |
| 1- Smart J/ 2- Watford T/ 4- Mays S/ 14- Taylor M/ 21- Cooper C/ | 04:23 | 8-9 | -1 | 1.8251 | 4 | 1 | 3 | 2 | 0.9479 |
| 1- Smart J/ 2- Watford T/ 4- Mays S/ 14- Taylor M/ 15- Hyatt A/ | 03:30 | 8-5 | 3 | 2.2857 | 5 | 0 | 1 | 1 | 1.3605 |
| 1- Smart J/ 2- Watford T/ 4- Mays S/ 5- Williams E/ 12- Graves M/ | 02:55 | 4-4 | 0 | 1.3714 | 2 | 1 | 0 | 1 | 0.8000 |
| 1- Smart J/ 2- Watford T/ 12- Graves M/ 14- Taylor M/ 15- Hyatt A/ | 02:21 | 8-2 | 6 | 3.4043 | 1 | 1 | 1 | 2 | 1.6000 |
| 1- Smart J/ 4- Mays S/ 14- Taylor M/ 15- Hyatt A/ 21- Cooper C/ | 02:21 | 7-1 | 6 | 2.9787 | 2 | 1 | 2 | 0 | 1.4344 |
| 2- Watford T/ 4- Mays S/ 5- Williams E/ 12- Graves M/ 14- Taylor M/ | 02:10 | 4-4 | 0 | 1.8462 | 1 | 0 | 1 | 0 | 1.0000 |
| 0- Days D/ 1- Smart J/ 2- Watford T/ 4- Mays S/ 14- Taylor M/ | 00:47 | 2-0 | 2 | 2.5532 | 2 | 0 | 0 | 0 | 1.0000 |
| 2- Watford T/ 4- Mays S/ 12- Graves M/ 14- Taylor M/ 21- Cooper C/ | 00:45 | 4-0 | 4 | 5.3333 | 1 | 1 | 0 | 0 | 1.8182 |
| 1- Smart J/ 5- Williams E/ 10- Bishop J/ 15- Hyatt A/ 21- Cooper C/ | 00:38 | 0-1 | -1 | 0.0000 | 0 | 0 | 0 | 0 | 0.0000 |
| 1- Smart J/ 12- Graves M/ 14- Taylor M/ 15- Hyatt A/ 21- Cooper C/ | 00:24 | 0-0 | 0 | 0.0000 | 0 | 0 | 0 | 0 | 0.0000 |
| 1- Smart J/ 10- Bishop J/ 12- Graves M/ 15- Hyatt A/ 21- Cooper C/ | 00:20 | 3-1 | 2 | 9.0000 | 1 | 0 | 0 | 1 | 3.0000 |