

# SEC Preview Meet LSU Cross Country September 19, 2020

## **EVENT SCHEDULE**

9:00 AM College Men 6k  
9:45 AM College Women 5k

**Participating Teams:** Arkansas (M&W), LSU (M&W), Miss. State (W), Ole Miss (M&W), Texas A&M (M&W)

**Entries:** All entries will be done through the Direct Athletics website. **Entries are due by Tuesday, September 15th by NOON.** Entries are unlimited in number in each race. All entries are done through Direct Athletics website: [www.directathletics.com](http://www.directathletics.com)

**Entry Fee:** \$150 per team/gender (\$300 for both men and women if combined)

**Parking:** Public parking will be at: **L'Auberge Casino and Hotel**  
777 L'Auberge Ave  
Baton Rouge, LA 70820

\*There will be multiple shuttles running back and forth from parking to the course

**Address of the course:**

**University Club of Baton Rouge  
15333 Memorial Tower Dr.  
Baton Rouge, LA 70810**

**Course Description:** The course is a relatively flat course with a few sections that have mogul type rolling hills that are common on golf courses. The course is run both in the fairway and short grass rough adjacent to the fairways. The course has good footing throughout with predominantly wide sweeping turns.

**Team Drop Off Directions:**

**From Baton Rouge Metropolitan Airport**

Take I-110 South to exit 1A for Government Street  
Turn Right onto Government Street  
Turn Left onto St. Phillips Street  
Continue onto LA-30/Nicholson Drive for approximately 9.5 miles  
Turn Left onto University Club Drive  
Team Drop off at Corner of University Club Drive and Memorial Tower Drive

**From East on I-12W:**

Take Exit 1A to merge onto I-10E towards New Orleans  
Take Exit 162A for Bluebonnet Blvd Toward LA-1248  
Keep right at the fork and turn onto Bluebonnet Blvd for approximately 2.5 miles  
Turn left onto LA-30/Nicholson Drive for approximately 1.5 miles  
Turn Left onto University Club Drive  
Team Drop off at Corner of University Club Drive and Memorial Tower Drive

**From West on I-10E:**

Take Exit 155A for LA-30/Nicholson Dr/Highland Rd  
Keep right at the fork and continue toward Terrace Ave  
Keep left and merge onto Terrace Ave following signs for LA-30/Nicholson Drive  
Continue onto LA-30/Nicholson Drive for approximately 9.5 miles  
Turn Left onto University Club Drive  
Team Drop off at Corner of University Club Drive and Memorial Tower Drive

**\*\*TEAM BUSES WILL DROP OFF AT COURSE AND THEN PROCEED TO PARKING AREA AT L'AUBERGE HOTEL:**

**L'Auberge Casino and Hotel**  
777 L'Auberge Ave  
Baton Rouge, LA 70820

**Starting Box Assignments:** At packet pick-up each team will have been assigned to a starting box that will be painted on the starting line. There will be 3m between each of the starting boxes per SEC COVID-19 protocols

**Team Set-up Area:** There will be a designated area where teams can set up tarps, tents, chairs, etc. The team set up area is within 100m of the finish line. The start line is approximately 400m from the team tent area. Portable restroom facilities will be available in the immediate vicinity of the team area.

**SEC CROSS COUNTRY COVID-19 PROTOCOL**

Risk Category: Intermediate

Testing Plan Pre-Competition

PCR surveillance should be conducted weekly during training for intermediate sports.

Testing Plan for Competition All cross-country student-athletes, coaches and essential staff shall undergo surveillance PCR testing each week.

**Masking**

- All coaches, staff and non-competing student-athletes are required to wear a mask/neck gaiter during pre- and post-competition. Physical distancing should be employed to the extent possible.
- All competing student-athletes are required to wear a face mask/neck gaiter at the starting line. A face mask/neck gaiter may be removed/pulled down once adequate physical distancing (at least 800 meters from the starting line) is achieved.
- All cross-country officials shall wear a face mask/neck gaiter in the competition area at all times.
- All other individuals provided with access to the competition area must wear a face mask/neck gaiter at all times.

**Competition**

- Starting line areas must be adapted to provide a minimum of 3 meters between each team's starting box.

- Apparatuses to contain or funnel contestants after the finish line are prohibited. Athletes should be encouraged to disperse forward in multiple directions immediately after crossing the finish line.

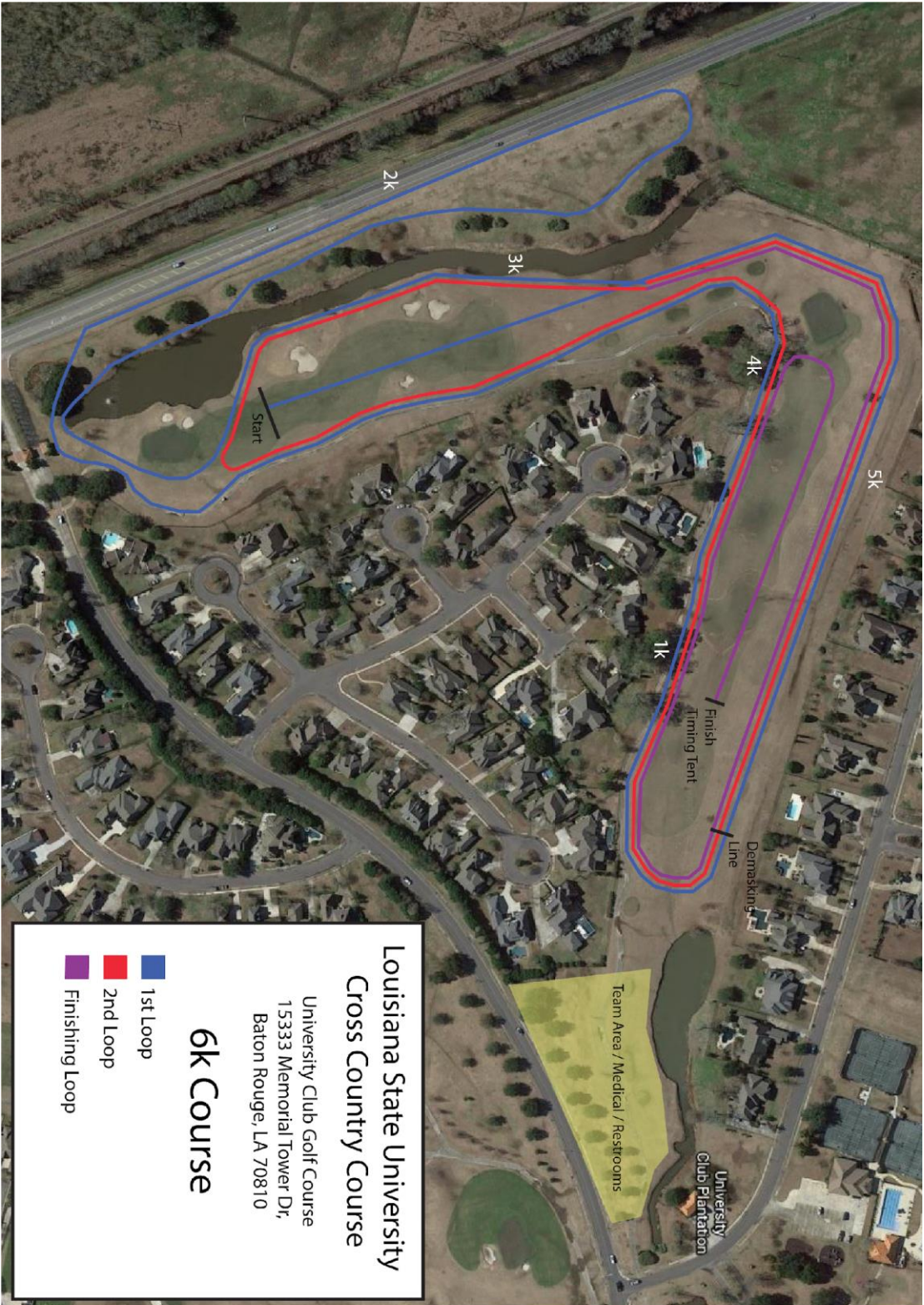
- Limit regular season competitions to a maximum of 10 teams per race/heat.

**\*\*Protocols are subject to change\*\***

**Locker Rooms:** There are no locker rooms, showers, or dressing rooms onsite at University Club.

**Results:** Results will be posted with live updates and final results on <http://pttiming.com/events> and Twitter: @pttiming

**Contract Person:** Houston Franks, [rfranks1@lsu.edu](mailto:rfranks1@lsu.edu), 225-317-4935



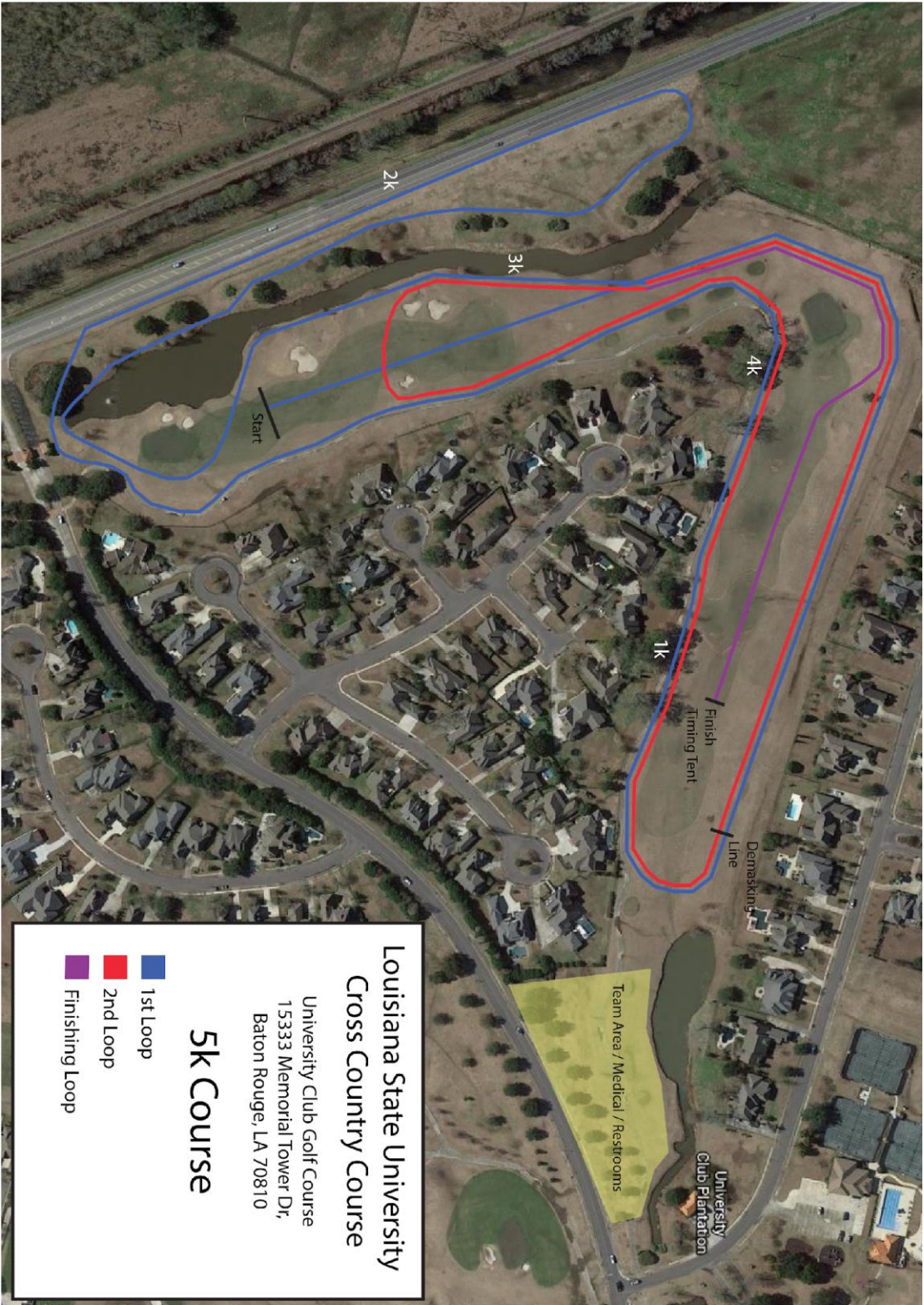
Louisiana State University  
Cross Country Course

University Club Golf Course  
15333 Memorial Tower Dr,  
Baton Rouge, LA 70810

6K Course

- 1st Loop
- 2nd Loop
- Finishing Loop





Louisiana State University  
Cross Country Course

University Club Golf Course  
15333 Memorial Tower Dr,  
Baton Rouge, LA 70810

5K Course

- 1st Loop
- 2nd Loop
- Finishing Loop