



### **EVENT SCHEDULE**

8:30 AM College Men 6k  
9:15 AM College Women 5k

**Participating Teams:** Email [andypdl@lsu.edu](mailto:andypdl@lsu.edu) for confirmation into the meet.

**Entries:** *Entries are due by Tuesday, September 14th by NOON.* Entries are unlimited in number in each race. All entries are completed online through [www.directathletics.com](http://www.directathletics.com)

**Entry Fee:** \$150 per team/gender (\$300 for both men and women if combined)

**Parking:** Public parking will be at: **L'Auberge Casino and Hotel**  
777 L'Auberge Ave  
Baton Rouge, LA 70820

\*There will be multiple shuttles running back and forth from parking to the course

**Address of the course:**

**University Club of Baton Rouge**  
**15333 Memorial Tower Dr.**  
**Baton Rouge, LA 70810**

**Course Description:** The course is a relatively flat course with a few sections that have rolling hills that are common on golf courses. The course is run both in the fairway and short grass rough adjacent to the fairways. The course has good footing throughout with predominantly wide sweeping turns.

**Team Drop Off Directions:**

**From Baton Rouge Metropolitan Airport**

Take I-110 South to exit 1A for Government Street  
Turn Right onto Government Street  
Turn Left onto St. Phillips Street  
Continue onto LA-30/Nicholson Drive for approximately 9.5 miles  
Turn Left onto University Club Drive  
Team Drop off at Corner of University Club Drive and Memorial Tower Drive

**From East on I-12W:**

Take Exit 1A to merge onto I-10E towards New Orleans  
Take Exit 162A for Bluebonnet Blvd Toward LA-1248  
Keep right at the fork and turn onto Bluebonnet Blvd for approximately 2.5 miles  
Turn left onto LA-30/Nicholson Drive for approximately 1.5 miles  
Turn Left onto University Club Drive  
Team Drop off at Corner of University Club Drive and Memorial Tower Drive

**From West on I-10E:**

Take Exit 155A for LA-30/Nicholson Dr/Highland Rd  
Keep right at the fork and continue toward Terrace Ave  
Keep left and merge onto Terrace Ave following signs for LA-30/Nicholson Drive  
Continue onto LA-30/Nicholson Drive for approximately 9.5 miles  
Turn Left onto University Club Drive  
Team Drop off at Corner of University Club Drive and Memorial Tower Drive

**\*\*TEAM BUSES WILL DROP OFF AT COURSE AND THEN PROCEED TO PARKING  
AREA AT L'AUBERGE HOTEL:**

**L'Auberge Casino and Hotel**  
777 L'Auberge Ave  
Baton Rouge, LA 70820

**Starting Box Assignments:** At packet pick-up each team will have been assigned to a starting box that will be painted on the starting line.

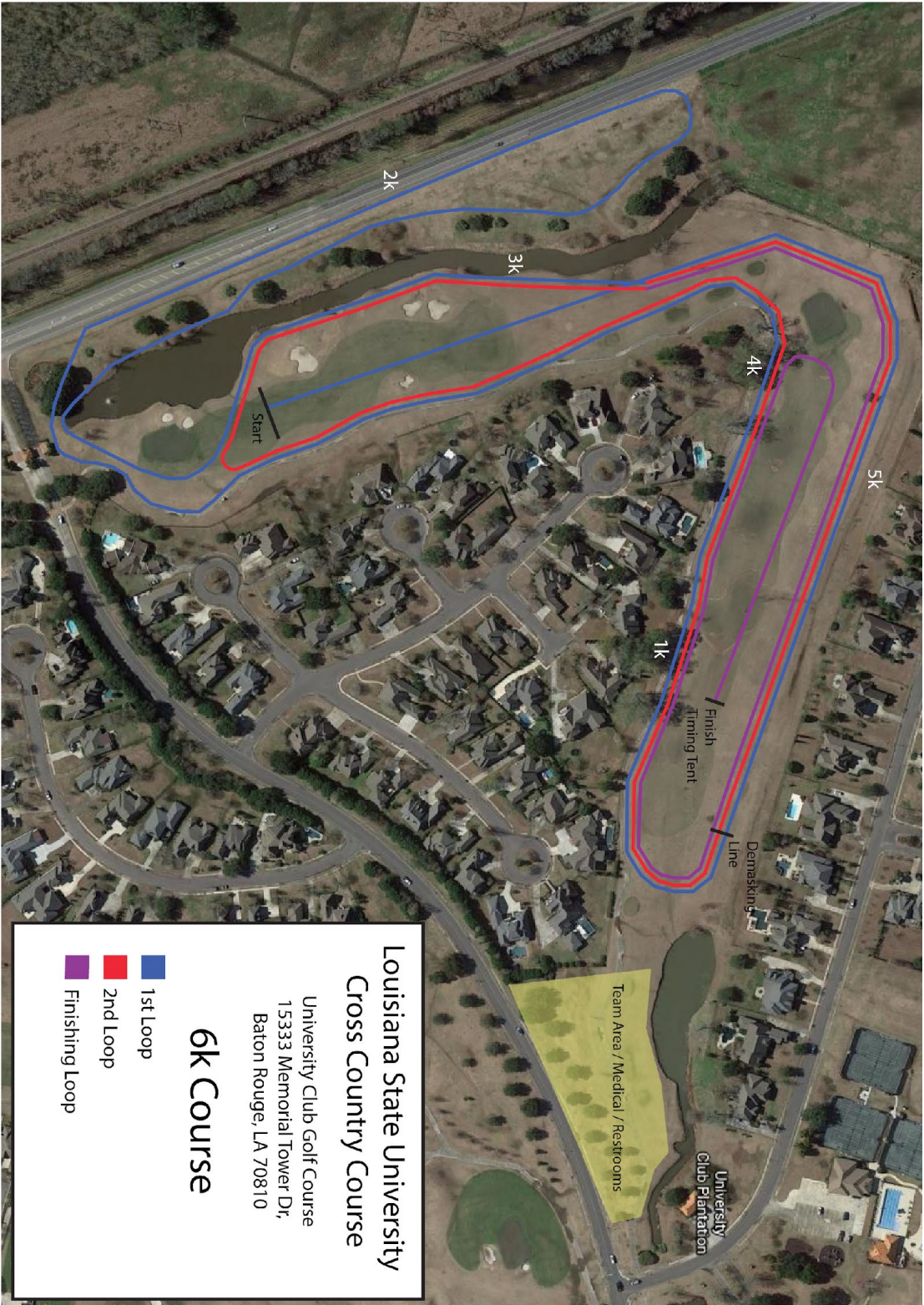
**Team Set-up Area:** There will be a designated area where teams can set up tarps, tents, chairs, etc. The team set up area is within 100m of the finish line. The start line is approximately 400m from the team tent area. Portable restroom facilities will be available in the immediate vicinity of the team area.

**COVID-19 Protocols:** Subject to change based on the direction from state and national health offices.

**Locker Rooms:** There are no locker rooms, showers, or dressing rooms onsite at University Club.

**Results:** Results will be posted with live updates and final results on <http://pttiming.com/events> and Twitter: @pttiming

**Contract Person:** Andy Ponce de Leon, [andypdl@lsu.edu](mailto:andypdl@lsu.edu), 225-326-0983



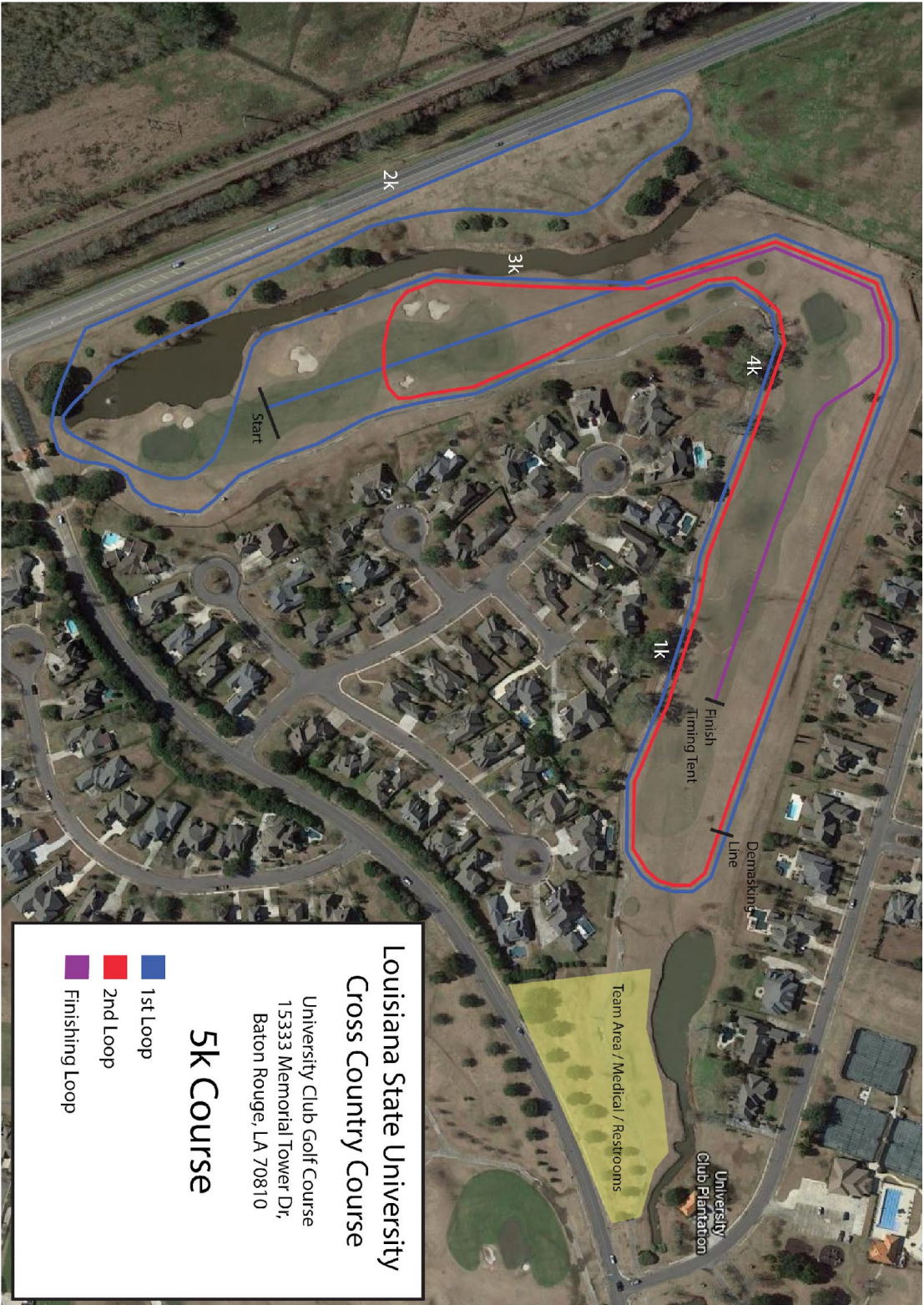
Louisiana State University  
Cross Country Course

University Club Golf Course  
15333 Memorial Tower Dr,  
Baton Rouge, LA 70810

6K Course

- 1st Loop
- 2nd Loop
- Finishing Loop





Louisiana State University  
Cross Country Course

University Club Golf Course  
15333 Memorial Tower Dr,  
Baton Rouge, LA 70810

5K Course

- 1st Loop
- 2nd Loop
- Finishing Loop