



SEC Regular Season Champs: 2005, 2006, 2008 | **SEC Tournament Champs:** 1991, 2003 | **NCAA Final Fours:** 2004, 2005, 2006, 2007, 2008

2021-22 Schedule

Overall: 22-4 | SEC: 10-3

Home: 12-2 | Away: 6-2 | Neutral: 4-0

DATE	OPPONENT	TV	TIME/RESULT
11/9	Nicholls	SECN+	W, 82-40
11/14	Florida Gulf Coast	SECN+	L, 74-88
11/18	at UL-Lafayette	ESPN+	W, 70-41
11/23	Tulane	SECN+	W, 75-58
11/26	New Mexico State (1)	FloSports	W, 72-52
11/27	Missouri State(1)	FloSports	W, 66-58
12/2	No. 14 Iowa State (2)	ESPN2	W, 69-60
12/12	Texas Southern	SECN+	W, 96-55
12/15	Alcorn State	SECN	W, 100-36
12/18	Bradley	SECN+	W, 77-51
12/20	Clemson (3)	FloSports	W, 70-56
12/21	Texas Tech (3)	FloSports	W, 74-60
12/27	Samford	SECN+	W, 83-47
12/30	at No. 13 Georgia*	SECN+	W, 68-62
1/2	No. 23 Texas A&M*	SECN+	W, 75-66
1/6	No. 1 South Carolina*	SECN+	L, 66-60
1/9	at Auburn*	SECN	W, 76-48
1/13	Missouri	SECN+	W, 87-85 (OT)
1/16	Vanderbilt* (4)	SECN	W, 82-64
1/23	at Florida*	SECN+	L, 73-72
1/27	at Arkansas*	SECN	L, 90-76
1/30	Kentucky*	SECN	W, 78-69
2/7	at Ole Miss*	SECN	W, 68-64
2/10	Georgia* (5)	SECN	W, 73-67
2/13	at Texas A&M	SECN+	W, 74-58
2/17	at Mississippi State*	SECN+	W, 71-59
2/20	Florida*	SECN	3:00 p.m.
2/24	Alabama*	SECN+	7:00 p.m.
2/27	at Tennessee	SECN/ESPN2	1:00 p.m.
3/2-3/6	SEC Tournament		

All Times Central

- 1 - San Juan Shootout (Coliseo Roberto Clemente)
- 2 - SEC/Big 12 Challenge
- 3 - West Palm Beach Invitation (Countess de Hoernle Student Life Center)
- 4 - We Back Pat Game
- 5 - Play4Kay Game

Athletic Communications

Contact: Grant Kauvar
 Email: gkauva1@lsu.edu
 Cell: 720-771-2299

No. 11 LSU vs. No. 17 Florida

22-4, 10-3 SEC

20-6, 10-3 SEC

Feb. 20 | 3 p.m. CT | Baton Rouge, La. | The PMAC

TV: SEC Network | Sam Gore, Tamika Catchings

Radio: LSU Sports Radio Network | Patrick Wright, Shaeeta Williams

Live Stats: LSUstats.com

On The Break

- In Coach **Kim Mulkey's** first season at LSU the Tigers have won more regular season games since the 2007-08 season. With LSU's 21st victory, this season marks the most wins in a season in every player's career on the current roster.
- In her 22nd season as a head coach, Coach Mulkey has won at least 20 games every season.
- LSU, Florida and Tennessee are in a three-way tie for second place in the SEC behind the nation's unanimous No. 1 South Carolina. In addition to the LSU vs. Florida matchup on Sunday, Tennessee and South Carolina are also scheduled to meet up the same day on noon CT on ABC in Columbia.
- Sunday's game in the PMAC is expected to be a sellout.
- LSU in No. 2 in the SEC in scoring offense (75.7) and scoring margin (+15.2).
- LSU's 45.6-percent shooting is No. 2 in the SEC and No. 17 in the country.
- The Tigers' rebounding has also been dominant and LSU is No.3 in the SEC with a +10.0 rebounding margin which also ranks No. 9 in the country. **Autumn Newby** grabs 8.2 rebounds per game for LSU, No. 5 in the conference.
- The LSU defense has also played well and limits opponents to shooting 37.3-percent (No. 3 in the SEC). When LSU holds opponents below 39.9-percent shooting, the Tigers have lost only once.
- The backcourt duo of **Khayla Pointer** and **Alexis Morris** has been exceptional scoring the ball. Pointer is No. 2 in the SEC with 19.3 points per game and has scored at least 20 in 13 games. Morris has scored 16.3 points per game is No. 8 in the SEC in scoring.
- Pointer and Morris are the conference's most potent guard combo in as the only duo from the same team that both rank in the top-10 in the SEC in scoring.
- Pointer and Morris both had big weeks. Pointer had 21 points against Georgia and 25 at Texas A&M. Morris ut up 26 against the Bulldogs and against her former team at Texas A&M she had 25.
- Considered one of the best players in the country, Pointer has been named to the watchlists for the Naismith Trophy, Nancy Lieberman Award, Dawn Staley Award and the Wade Trophy this week. She has scored double-figures in 14 consecutive games.
- Morris was named SEC Player of the Week after scoring 26 points and sinking 6-6 free throws in the final minute of the Georgia game and then scoring 25 points, 16 in the second half, at Texas A&M to erase a six point haltime deficit.

Last Game's Starters

LSU 71, Mississippi St. 59



Pointer

23 points (5-10)
4 rebounds
4 assists



Cherry

10 points (5-13)
8 rebounds
2 assists
2 blocks



Morris

23 points (7-18)
2 rebounds
2 assists



Aifuwa

6 points (2-8)
12 rebounds
2 blocks



Newby

6 points (3-5)
12 rebounds
2 assists

Other Noteworthy Players:

UNIVERSITY

Location: Baton Rouge, La.

Founded: 1860

Enrollment: 30,987

Nickname: Tigers or Fighting Tigers

Colors: Purple and Gold

Mascot: Mike

Stadium: Pete Maravich Assembly Center

Capacity: 13,215

Conference: Southeastern

Band: Bengal Brass Band

TEAM INFORMATION

Head Coach: Kim Mulkey (1st Season)

2020/21 Record 9-13

Home 4-6

Away 3-3

Neutral 2-4

2020/21 SEC Record 6-8 (8th in SEC)

Home 6-8

Away 3-3

Neutral 2-4

Postseason

SEC Tournament 1-1

Final Ranking NR/NR

Starters Returning/Lost 4/4

Name of starters returning: Khayla Pointer, Faustine Aifuwa,

Jailin Cherry, Awa Trasi

Name of Starters Lost: Tiara Young, Rakell Spencer, Karli Seay,

Dominique Davis

Name of others returning: Ryann Payne, Emily Ward, Sarah

Shematsi, Ajae Petty

Names of newcomers: Autumn Newby, Logyn McNeil, Hannah

Gusters, Timia Ware, Amani Bartlett, Grace Hall, Alexis Morris

PROGRAM HISTORY

First Season 1975/76

Season 47th

All-Time Record 973-490

All-Time SEC Record 301-214

NCAA Tournament Appearances/Last 26/2018

NCAA Final Four Appearances/Last 5/2008

SEC Regular Season Titles/Last 3/2008

SEC Tournament Titles/Last 2/2003

PRONUNCIATION GUIDE

Awa Trasi Ah-wah Trah-zee

Jailin Cherry JAY-lyn

Faustine Aifuwa fah-STEEN ah-FOO-wah

Ajae Petty pronounced like Asia

Sytia Messer suh-TEE-ah



LSU WOMEN'S BASKETBALL ROSTER

NO.	NAME	POS	HT.	CL.-EXP	HOMETOWN (PREVIOUS SCHOOL)
0	Autumn Newby	F	6'2"	Gr.-TR	Lawrenceville, Ga. (Vanderbilt) (Archer HS)
1	Jailin Cherry	G	5'8"	Gr.-4L	Pascagoula, Muss (Pascagoula HS)
3	Khayla Pointer	G	5'7"	Gr.4L	Marietta Ga. (Holy Innocents' Episcopal HS)
10	Ryann Payne	G	5'7"	Jr.-1L	Los Angeles, Calif. (TCU) (Sierra Canyon HS)
11	Emily Ward	F	5'11"	So.-2L	Bossier City, La. (Benton HS)
13	Logyn McNeil	F	6'3"	Fr.-HS	Rockwall, Texas (Rockwall-Heath High School)
14	Sarah Shematsi	G/F	6'2"	Jr.-1L	Annecy, France (South Plains College) (Lycee Bellevue)
15	Ajae Petty	F	6'3"	Fr.-1L	Baltimore, Md. (Baltimore Polytechnic Institute)
20	Hannah Gusters	C	6'5"	Fr.-TR	Dallas, Texas (Baylor) (MacArthur HS)
21	Timia Ware	G	5'6"	Fr.-HS	Chicago, Ill. (Whitney Young Magnet High School)
23	Amani Bartlett	F	6'3"	Fr.-HS	Cleveland, Texas (Houston Christian High School)
24	Faustine Aifuwa	C	6'5"	Gr.-4L	Dacula, Ga. (Dacula HS)
30	Grace Hall	F	6'1"	Fr.-HS	Homewood, Ill. (Homewood-Flossmoor HS)
32	Awa Trasi	F	6'1"	Sr.-2L	Toulouse, France (Northwest Florida State College) (Lycee Jeanne d'arc)
45	Alexis Morris	G	5'6"	RJr.-TR	Beaumont, Texas (Baylor, Rutgers, Texas A&M) (Legacy Christian HS)

* Classes reflect how many more years of athletic eligibility each student-athlete has

COACHING STAFF

Kim Mulkey	Head Coach
Alma Matter	Louisiana Tech (1984)
Career Record	652-108 / 22nd Season
LSU Record	22-4 / 1st Season
Sytia Messer	Associate Head Coach
Year	1st
Daphne Mitchell	Assistant Coach
Year	1st
Kaylin Rice	Assistant Coach
Year	1st
Johnny Derrick	Assistant AD/Director of Ops
Year	1st
Jennifer Roberts	Director of Player Personnel
Year	1st
Chante' Crutchfield	Assistant Director of Ops/Recruiting
Year	1st
Jordin Westbrook	Assistant Director of Ops
Year	1st
Joe Schwartz	Assistant Director of Ops
Year	1st
Renee' Braud	Administrative Coordinator
Year	20th

On The Break

Morris Takes Over 4th Quarter In Starkville

- Alexis Morris scored 15 points in the final quarter after LSU trailed MSU by 2 going into the 4th. Morris took the game over as LSU controlled the final quarter, finishing the game on a 17-3 run and holding the Bulldogs scoreless for a six-minute stretch, going 1-11 to finish the game and LSU clamped down on defense.

Scouting Florida

- Florida has been on the rise under interim coach Kelly Rae Finley who took over just weeks before the season. She has the Gators in a tie for second place in the SEC with LSU and Tennessee.
- Kiara Smith is one of three gators to score in double figures and she scores 14.8 points per game. Lavender Briggs and Jordyn Merritt are Florida's other two leading scorers.

A rematch vs. the Gators

- LSU struggled in its first matchup against Florida in Gainesville. Khayla Pointer had 35, becoming the first LSU player since Seimone Augustus to score that many in a game, but no other player scored in double figures. Despite that, LSU lost by just one in one of its worst outings of the season.

- LSU turned the ball over 19 times in Gainesville which allowed the Gators to control the pace of the game.

Morris and Pointer go off in second half at Texas A&M

- LSU trailed by 6 going into the second half in College Station, but Khayla Pointer and Alexis Morris both had 16 second half points to finish with 25 a piece and lead LSU to its second win over Texas A&M, 74-58. It was the second game in a row both Pointer and Morris scored over 20.

- After playin for Texas A&M last season, Morris has games with 30 and 25 points this year against her former team.

- Coach Mulkey improved to 21-5 against Gary Blair in what could end up being their final meeting as head coaches. Their relationship goes back to when Coach Blair was an assistant coach at LA Tech when Mulkey starred there.

Guards Geaux Off vs. Georgia

- LSU led by as many as 20 in the third quarter, but Georgia's bench pulled the Bulldogs even with under three minutes left in the game. Thanks to clutch free throw shooting down the stretch, LSU held on to win by six. The Tigers never trailed.

- LSU's backcourt trio of Alexis Morris (26), Khayla Pointer (21) and Jailin Cherry (18) were effective scoring the ball at all three levels. They combined for 65 of LSU's final 73 points. When they are on, there are few guard trios in the country that can top LSU's three-headed monster.

Three-Headed Monster In The Backcourt

- LSU's trio of guards have proven to be one of the best backcourts in the nation. Khayla Pointer is one of the best players in the country on multiple award watchlists and she is joined in the backcourt by Alexis Morris and Jailin Cherry. All three guards have the ability to create their own offense and offense for others, get to the rim, dish the ball and play elite defense.

A Road Win In Oxford

- Multiple Tigers shined during LSU's road win at Ole Miss.

- Khayla Pointer (16 p, 11 r., 10 a) became the fifth SEC player and second LSU player with multiple triple-doubles in her career. LSU is the only SEC program to have multiple players with multiple career triple doubles (Pointer and Cornelia Gayden)

- Faustine Aifuwa played big in the paint and had a double double, tying a career-high with 20 points and setting a season mark with 14 rebounds

- Alexis Morris scored 17 and had 6 boards while Jailin Cherry had 7 points and 8 rebounds.

Back On Track In The PMAC

- Returning home after two road losses at Florida and at Arkansas, the Tigers went to battle with Kentucky in the PMAC and overcame a 5-point deficit entering the fourth quarter to get back on a winning track. The Tigers outscored the Wildcats, 30-16, in the fourth quarter and Pointer had 19 points in the final quarter.

- Pointer finished the game with 28 total points and Morris, who had 13 in the first half, finished the game with 20 points.

First Since Seimone Augustus

- Khayla Pointer's 35 points in the loss at Florida marked the first time a LSU player scored that many points since Seimone Augustus put up 35 at Florida in 2006.

- Pointer was the only player to score in double figures during the game as LSU lost its third game of the season.

- After Autumn Newby exited the Missouri game and missed the Vanderbilt game, she made her return to the court in Gainesville and led the Tigers with 11 rebounds.

- The Florida game was the first game that LSU lost after holding its opponent below 39.9-percent shooting.

Everybody Is Involved in win over Vanderbilt

- LSU's starters were productive in LSU's win over Vanderbilt. Faustine Aifuwa, Jailin Cherry, Khayla Pointer and Alexis Morris all scored in double figures. All four of them plus Awa Trasi had at least 7 rebounds.

- Spreading the wealth on the boards was key as LSU was without leading rebounder Autumn Newby after she was injured in the game against Missouri.

- Morris came out playing well and had 18 of her 20 points in the first half.

An Overtime Win Over Missouri

- LSU led by 11 at halftime, but Missouri surged back with 8 threes in the second half and ultimately forced overtime. With 5.7 seconds left in OT, Pointer made a layup after driving from the top of the key. Alexis Morris blocked Missouri's last-second lay-in attempt.

- Pointer finished with 21 points, 4 rebounds and 6 assists, playing all 45 minutes.

- Jailin Cherry also played all 45 minutes and she had 20 points, a career-high 9 assists and 7 rebounds

- Missouri made 15 threes in the game, the most ever allowed by a LSU Women's Basketball team.

TIGER TRENDS

	2021-22 Mulkey	Streak
November	5-1	W4
December	8-0	W10
January	5-3	W1
February	4-0	W4
March	0-0	L1
April	0-0	0-0
LSU's Conference Record...		
at home	5-1	W4
on the road	5-2	W3
LSU's Non-Conference Record...		
at home	7-1	W6
on the road	1-0	W2
neutral	4-0	W5
LSU's Record In Games...		
decided by 10 or less	8-2	W3
decided by 5 or less	2-1	W2
decided by 3 or less	1-1	L1
that go to overtime	1-0	W1
LSU's record when scoring...		
less than 50 points	0-0	L8
50+ points	22-4	W5
60+ points	22-4	W4
70+ points	18-3	W4
LSU's record when allowing...		
50 or fewer points	5-0	W25
60 or fewer points	15-0	W15
70 or fewer points	21-1	W7
71+ points	1-3	L2
LSU's record when...		
leading after the 1st qtr	19-1	W7
trailing after the 1st qtr	1-3	L2
tied after the 1st qtr	2-0	W2
leading at halftime	16-1	W6
trailing at halftime	5-2	W2
tied at halftime	1-1	L1
leading after the 3rd qtr	19-1	W3
trailing after the 3rd qtr	3-3	W2
tied after the 3rd qtr	0-0	0-0

*Coach Mulkey at LSU

TRACKING THE STARTERS

Pointer, Cherry, Morris, Newby, Aifuwa	15-3
Pointer, Cherry, Morris, Trasi, Aifuwa	2-0
Pointer, Cherry, Payne, Newby, Gusters	1-1
Pointer, Cherry, Morris, Trasi, Gusters	1-0
Pointer, Payne, Morris, Trasi, Aifuwa	1-0
Pointer, Payne, Morris, Newby, Aifuwa	1-0
Pointer, Cherry, Payne, Newby, Aifuwa	1-0

Honors/Awards

Khayla Pointer

- Media Preseason All-SEC Team
- Coach's Preseason All-SEC First Team
- Wooden Award Watchlist
- SEC Player of the Week (11/16/21)
- West Palm All-Tournament First Team (12/22/21)
- Nancy Lieberman Award Midseason Watchlist
- Dawn Staley Award Midseason Watchlist
- Naismith Trophy Midseason Watchlist
- Wade Trophy Midseason Watchlist

Hannah Gusters

- Lisa Leslie Award Preseason Watchlist

Alexis Morris

- LSWA Player of the Week (12/7/21)
- SEC Player of the Week (2/15/22)

Kim Mulkey

- Naismith Coach of the Year Watchlist

Embrace The Future

- Coach Mulkey signed an elite first class as LSU's head coach on November 10.

-The class is ranked No. 10 in the country by Dan Olsen Collegiate Girls Basketball Report.

- The class included Flaujae Johnson, Sa'Myah Smith, Alisa Williams, Last-Tear Poa and Izzy Besselman

-Flaujae Johnson (G) is the No. 26 player in the country and No. 6 guard in the country. She is also a rap star who has nearly 1,000,000 followers across all social media platforms.

-Sa'Myah Smith (G/F) is the top player in the Dallas area and the No. 57 player in the country. She is a forward who has the ability to play on the perimeter.

- Last-Tear Poa (G) is the top Juco Transfer in the class from Northwest Florida State College. She is originally from Melbourne, Australia.

- Alisa Williams (G) is a lefty with great size and versatility who possesses great basketball IQ and is the No. 4 player in the Dallas area.

- Izzy Besselman (F) is going to walk-on. The Baton Rouge native led Episcopal to a state championship in 2020, going for 26 in the championship victory. She is also a standout volleyball player.

- Flaujae was named to the McDonald's All-American game which will take place on March 29 in Chicago

KP's Club Of One

- Khayla Pointer is the only player in program history to record 1,500 points, 500 assists and 500 rebounds.

Bouncing Back At Auburn

- After falling to No. 1 South Carolina, LSU went on the road to Auburn and bounced back with a 76-48 win. It was LSU's second largest win over

Auburn ever and LSU's largest road SEC victory since 2011 at Ole Miss.

- LSU's victory margin could have been higher if it weren't for a handful of missed layups. Khayla Pointer finished with a double-double with 24 points and 11 rebounds. With 6 assists, Pointer had the chance to get a triple-double if it weren't for missed layups.

- Coach Mulkey said she felt the team had a great shootaround Sunday morning before the game and was mentally prepared to rebound following the South Carolina defeat.

Toe-to-toe with No. 1 South Carolina

- No. 13 LSU went toe-to-toe with No. 1 South Carolina, falling just short as the Gamecocks won the battle on the boards. LSU held leads after the first quarter and at halftime, but went cold to start the third quarter and South Carolina mounted a second half run.

- The Gamecocks were able to control the battle on the boards and LSU allowed them to get too many offensive rebounds in critical situations down the stretch.

- It was the first LSU Women's Basketball Top-15 matchup inside the PMAC since LSU hosted No. 1 UCONN in 2008.

A White Out In The PMAC

- LSU Women's Basketball is one of the hottest tickets in town and told fans to wear white to the Tigers' matchup against No. 1 South Carolina. The fans turned out - in total 9,190 fans came dressed in white - the 15th largest crowd in LSU Women's Basketball history.

- In Coach Mulkey's first season at LSU the energy around the program has been electric. LSU is averaging 6,355 fans per home game, the third largest average in the SEC.

Geauxing The Distance

- Khayla Pointer has been critical to LSU's success and is playing as one of the best guards in the SEC. Not only is she efficient, but she rarely goes to the bench and leads the SEC averaging 36.4 minutes per game.

- She has played all 40 minutes in 8 games plus she played all 45 minutes during the overtime game against Missouri where she hit the game-winning layup with 5.7 second remaining.

- Alexis Morris is No. 5 in the SEC averaging 34.3 minutes per game and has played all 40 minutes in four games this season. She also played over 40 minutes in LSU's overtime win against Missouri.

Morris Explodes For 30 In Win Over Former Team, Texas A&M

- Alexis Morris went off for 30 points, 23 of which came in the second half, to help lead LSU to a win over Texas A&M on Sunday. Morris played for TAMU last season.

- LSU is the fourth school Morris has played for. She spent her freshman season playing at Baylor for Coach Mulkey, but was ultimately kicked off the team by Coach. She played one year at Rutgers before transferring to Texas A&M.

- Morris had already placed her name in the transfer portal before LSU hired Coach Mulkey which is when Morris began reaching out to join LSU. She says she "needed Coach Mulkey in her life."

- Mulkey ultimately decided to give Morris another chance after kicking her off the team at Baylor and has said, "Alexis Morris now has the opportunity to write the ending of her college career here at LSU."

Morris Explodes For 30 In Win Over Former Team, Texas A&M

- Alexis Morris went off for 30 points, 23 of which came in the second half, to help lead LSU to a win over Texas A&M on Sunday. Morris played for TAMU last season.

- LSU is the fourth school Morris has played for. She spent her freshman season playing at Baylor for Coach Mulkey, but was ultimately kicked off the team by Coach. She played one year at Rutgers before transferring to Texas A&M.

- Morris had already placed her name in the transfer portal before LSU hired Coach Mulkey which is when Morris began reaching out to join LSU. She says she "needed Coach Mulkey in her life."

- Mulkey ultimately decided to give Morris another chance after kicking her off the team at Baylor and has said, "Alexis Morris now has the opportunity to write the ending of her college career here at LSU."

Fourth Quarter Success

- LSU has trailed in the fourth quarter in both of its past two games, but has found ways to win at then No. 13 Georgia and against No. 23 Texas A&M.

- Khayla Pointer hit two big go-ahead threes in the final minutes of the Georgia game to redeem herself after a series of errors early in the fourth quarter.

- LSU trailed Texas A&M by three going into the final quarter, but outscored the Aggies 29-17 in the fourth quarter to win its 13th straight game.

- Alexis Morris had 11 points in the fourth quarter of the Texas A&M game and went 6-8 from the free throw line to ice the game in the final quarter.

- Jailin Cherry went scoreless through three quarters against Texas A&M. She began running the point position in the fourth quarter and found her rhythm, ultimately putting up 10 points in the final quarter, hitting four shots and coming through in crunch time for the Tigers.

Opening SEC Play With A Road Win In Athens

- In her first SEC game, Coach Mulkey led the Tigers into Athens and defeated No. 13 Georgia as LSU won its 12th straight.

- Georgia native Khayla Pointer played big for the Tigers with 21 points, including two threes late in the game to make up for some miscues earlier in the fourth quarter. LSU's other two Georgia natives had good games too as Faustine Aifuwa had 17 points and 9 rebounds and Autumn Newby had 9 points and 10 rebounds.

- Jailin Cherry got LSU going early. She finished with 10 points, 8 of which came in the first half.

- LSU closed 2021 out with its second win over a ranked opponent in December after beating No. 14 Iowa State on December 2.

11 Straight Wins Going Into SEC Play

- The Tigers are riding a 11-game win streak, their longest since winning 14 straight during the 2007-08 season.

- LSU's win streak has included wins over ULL, Tulane, New Mexico St., Missouri St., No. 14 Iowa State, Texas Southern, Alcorn State, Bradley, Clemson, Texas Tech and Samford

All Five Starter Score Double Digits

- In LSU's 74-60 win over Texas Tech at the West Palm Beach

Invitational all five of LSU's starter scored double digits, the first time that has happened since Valentine's Day in 2008 when the Tigers

pummeled No. 1 Tennessee on the road, 78-62.

- LSU improved to 11-1 and won its 10th straight with all five starters reaching at least 10 points. Pointer (19), Cherry (16), Morris (13), Newby (12) and Aifuwa (10)

Scoring The Ball

- A big emphasis has been placed on finding ways to score the ball.

- Through eight games of the Coach Mulkey Era the Tigers are averaging 76.9 points per game, No. 33 in the NCAA and No. 3 in the SEC.

- LSU has a .468 field goal percentage, the third best in the SEC and 15th in the NCAA

- In total, 11 Tigers have scored double-digits at least one time this season and six players have multiple double-figure scoring games,

First Marquee Win Under Coach Mulkey

- The Tigers picked up their first marquee win under Coach Mulkey when they handed No. 14 Iowa State its first loss of the season. LSU won the game, 69-60, and trailed for only 58 seconds throughout the first half and never surrendered the lead in the second half.

- LSU shined in front of a national television audience on ESPN2.

Everytime the Cyclones went on to make it a one-possession game in the second half the Tigers responded with points and refused to relinquish the lead.

Stellar Backcourt Play Leads LSU to Victory over No. 14 Iowa St.

- The LSU guards owned the game in LSU's win over No. 14 Iowa St. Alexis Morris had career-high 25, Khayla Pointer had 20 and Ryann Payne had 9 as the trio of Tiger guards combined for 54 of LSU's 69 points.

- Morris was huge in setting the tone for the victory with 12 points on 4-4 shooting in the first quarter. She finished the game going 5-7 from beyond the arc.

- Payne stepped up big defensively, recording 5 (career-high) of LSU's 10 steals. Her lone three was a big one as it came in the third quarter when Iowa St. had brought the score within one possession.

- Pointer did what she does, making buckets and dishing the ball. She has 20+ points in four of LSU's seven games and her 5.29 assists per game is the third best mark in the SEC.

Packing The PMAC

- Fan excitement has been building since Coach Mulkey's hiring was announced and the fans have shown out in the PMAC this season.

- LSU is averaging 5,857 fans per home game this year in the Pete Maravich Assembly Center.

That is the third highest attendance average in the SEC behind South Carolina and Tennessee.

- Prior to LSU's game against Iowa State there was a line of students outside the game waiting to get in. The crowd helped propel LSU to its first win over a ranked opponent under Coach Mulkey.

Success In San Juan

- The Tigers traveled to Puerto Rico over Thanksgiving for two games at the San Juan Shootout against New Mexico State and Missouri State.

- New Mexico State gave LSU all it could handle holding a small lead after the first quarter and at halftime. The Tigers responded out of the locker room in the third quarter where LSU went on a 15-3 run before running away with a 20-point win.

- Of Pointer's 20 points against NMSU, 16 came in the second half, including 10 in the third quarter.

- In its second game in San Juan, LSU took down a Missouri State team that has been to two straight NCAA Sweet 16s and had defeated No. 24 Virginia Tech a day earlier. LSU led by nine at the half before the Lady Bears were able to tie it up in the third quarter, but LSU responded making big plays in key moments to earn what Coach Mulkey said was a critical win for the program she is building in Baton Rouge.

- Once again, Pointer was potent, scoring a season-high 25 points to help provide a winning edge.

Find A Way To Go 1-0

- Coach Mulkey has said with this LSU team, the Tigers will need to be a squad that grinds out victories.

- LSU plans to take the season one game at a time, focusing on the next opponent with a goal of going 1-0 each game.

- Coach Mulkey and her staff put together detailed scouting reports for every opponent which will be key for the team to execute in order to get wins.

Pointer Looks Strong Out Of The Gates

- Pointer has scored 20+ in four of the first seven games and has been a key piece in LSU's early success.

- After beginning the season with a triple-double, Pointer recorded a double-double the following game to earn SEC Player of the Week Honors.

- When LSU was out of rhythm against NMSU in San Juan, Pointer's 16 second half points propelled the Tigers to victory. The following day she put up 25 to lead LSU to a big win over Missouri State.

- Averaging 17.4 points per game, Pointer ranked No. 4 in the SEC in scoring and has the 11th highest field goal percentage (.452)

- The senior guard does not get tired, leading the SEC averaging 36.19 minutes per game. She has played all 40 minutes twice this season.

Morris Making Impact

- Guard Alexis Morris became eligible to suit up for the Tigers prior to their game against FGCU. Making an impact on both ends of the floor, Morris is No. 8 in the SEC in steals per game (2.14) and No. 9 in field-goal percentage (.467).

- Since becoming eligible, Morris has scored in double-figures in all seven of her games.

- Morris transferred to LSU after playing for Texas A&M last season. The Beaumont, Texas native played for Coach Mulkey as a freshman at Baylor in the 2017-18 season and was named to the Big 12 All-Freshman team.

- After hitting her first three-pointer of the season against Missouri St. in San Juan, Morris hit 5-7 threes the following game in the win over No. 14 Iowa State to help her finish with a career-high 25 points.

The Career of Khayla Pointer

- Khayla Pointer has been a leader for the Tigers throughout her career and is going to be a key to LSU this season as a Preseason All-SEC Player.

Coach Mulkey's WNBA Draft Picks

Player	Year	Team	Round	Pick
Sheila Lambert	2002	Charlotte	1	7
Danielle Crockrom	2002	Utah	1	11
Steffanie Blackmon	2005	Seattle	3	38
Sophia Young	2006	San Antonio	1	4
Bernice Mosby	2007	Washington	1	6
Angela Tisdale	2008	Chicago	3	33
Jessica Morrow	2009	Atlanta	3	27
Britney Griner	2013	Phoenix	1	1
Brooklyn Pope	2013	Chicago	3	28
Odyssey Sims	2014	Tulsa	1	2
Niya Johnson	2016	Atlanta	3	28
Alexis Jones	2017	Minnesota	1	12
Alexis Prince	2017	Phoenix	3	29
Kristy Wallace	2018	Atlanta	2	16
Kalani Brown	2019	Los Angeles	1	7
Chloe Jackson	2019	Chicago	2	15
Lauren Cox	2020	Indiana	1	3
Te'a Cooper	2020	Phoenix	2	18
Juicy Landrum	2020	Connecticut	3	35

LSU's WNBA Draft Picks

Player	Year	Team	Round	Pick
Elaine Powell	1999	Orlando	4	50
Katrina Hibbert	2000	Seattle	4	57
Marie Ferdinand	2001	Utah	1	8
April Brown	2001	Indiana	4	51
Aiysha Smith	2003	Washington	1	7
DeTrina White	2003	Indiana	2	20
Ke-Ke Tardy	2003	San Antonio	2	25
Doneeka Hodges	2004	Los Angeles	2	25
Temeka Johnson	2005	Washington	1	6
Seimone Augustus	2006	Minnesota	1	1
Scholanda Dorrell	2006	Sacramento	1	14
Sylvia Fowles	2008	Chicago	1	2
Erica White	2008	Houston	2	17
Quianna Chaney	2008	Chicago	2	19
Allison Hightower	2010	Connecticut	2	15
LaSondra Barrett	2012	Washington	1	10
Theresa Plaisance	2014	Tulsa	3	27
Raigyne Moncrief-Louis	2018	Las Vega	3	25

DOUBLE-DOUBLES	21-22	CAREER	LAST
Faustine Aifuwa	3	21	2/7/22
Khayla Pointer	6	10	2/7/22
Autmn Newby	1	1	12/21/20
Jailin Cherry	--	1	3/1/20

TRIPLE-DOUBLES	21-22	CAREER	LAST
Khayla Pointer	2	2	2/7/22

*Pointer is the 5th player in SEC history with multiple career triple-doubles. LSU is the only team in the SEC that has multiple players with multiple triple-doubles (Pointer and Cornelia Gayden)

10+ SCORING	21-22	CAREER	LAST
Khayla Pointer	24	88	2/17/22
Faustine Aifuwa	13	58	2/7/22
Alexis Morris	21	33	2/14/22
Awa Trasi	1	10	11/18/21
Jailin Cherry	12	23	2/17/22
Autumn Newby	3	11	1/27/22
Hannah Gusters	2	8	1/9/22
Ryann Payne	2	2	11/18/21
Sarah Shematsi	--	2	3/4/21
Timia Ware	1	1	12/15/21
Grace Hall	1	1	12/15/21
Ajae Petty	1	1	12/27/21

10+ REBOUNDING	21-22	CAREER	LAST
Faustine Aifuwa	4	29	2/17/22
Autumn Newby	11	19	2/17/22
Khayla Pointer	6	8	2/7/22
Jailin Cherry	-	1	3/1/20
Awa Trasi	-	1	3/6/20
Hannah Gusters	--	1	3/6/21

20+ SCORING	21-22	CAREER	LAST
Khayla Pointer	13	33	2/13/22
Alexis Morris	8	8	2/17/22
Faustine Aifuwa	2	5	2/7/22
Jailin Cherry	2	2	1/13/22
Awa Trasi	--	1	2/13/20
Hannah Gusters	--	1	12/18/20
Autumn Newby	--	1	11/6/18

20+ REBOUNDING	21-22	CAREER
N/A	-	-

5+ ASSISTS	21-22	CAREER
Khayla Pointer	14	56
Alexis Morris	6	6
Jailin Cherry	3	4
Ryann Payne	1	1
Timia Ware	1	1

LSU Stat Rankings

Stat	Value	SEC	NCAA
Scoring Offense	75.69	2	22
Scoring Defense	60.50	5	112
Scoring Margin	15.19	2	17
FG%	.456	2	17
FT%	.661	12	297
3PT%	.339	3	58
Reb. Margin	10.0	3	9
Assists	14.7	4	75
DRPG	29.77	3	13
Turnover Margin	3.19	4	T52

- She has led the Tigers in points scored in each of the past two seasons and surpassed the 1,000 career point mark last year. She entered this season with 1,306 points scored
 -Pointer also entered her final season with 431 assists, the fifth most assists in program history, and she is climbing the rankings.

LSU Career Assists List

1. Temeka Johnson (2001-05) - 945
2. Pokey Chatman (1987-91) - 570
3. **Khayla Pointer (2017-present) - 564**
4. Erica White (2004-08) - 519

SEC Active Career Stat Leaders (2/8/22)

- Career Points
 - Khayla Pointer, No. 3, 1764
 - Faustine Aifuwa, No. 14, 1241
- Career Rebounds
 -Faustine Aifuwa, No. 3, 914
 - Autumn Newby, No. 8, 714
 - Khayla Pointer, No. 16, 520
- Career Blocks
 -Faustine Aifuwa, No. 5, 219
- Career Assists
 - Khayla Pointer, No. 1, 557
- Career Steals
 - Khayla Pointer, No. 3, 236

The Addition of Hannah Gusters

- Hannah Gusters was the first player to sign to play at LSU for Coach Mulkey
 - It wasn't the first time Gusters signed to play with Coach Mulkey after she spent her first college season playing for Mulkey at Baylor.
 - Gusters was part of a post rotation at Baylor that featured two All-Americans
 - The Dallas native had a career high 22 points against Northwestern State and 10 rebounds against Kansas, both of which resulted in wins. She scored in double-figures six times during her lone season in Waco.

Handing Tulane Its First Loss

- LSU was able to hand Tulane its first loss of the season after the Green Wave got off to a 4-0 start, including a road victory at Alabama and a double OT win over TCU.
 - Faustine Aifuwa (17), Khayla Pointer (14), Alexis Morris (12), Autumn Newby (11) and Jailin Cherry (10) all scored double-figures to help LSU hand Tulane its first loss of the season.
 - LSU and Tulane both grabbed 43 rebounds. Tulane entered the game ranked in the NCAA Top-10 in total rebounds, offensive rebounds and defensive rebounds per game.

Tigers Secure First Road Victory in Lafayette

- When LSU hit the road to Lafayette to face ULL, the goal was to win their first road match of the season. After a slow first quarter where both teams played poor on the offensive end, LSU used a 20-4 second quarter to open the game up.
 - With both of LSU's centers in foul trouble, the Tigers relied on Awa Trasi and Autumn Newby in the post. Trasi had a game-high 17 point and Newby finished with a game-high 12 rebounds.
 - LSU's defense was stout on the road, forcing 26 ULL turnovers and recording 9 steals. The Tigers limited Pre-season Sun Belt Player of the Year Ty' Reona Doucet to just 2 points.

FGCU Uses Three Ball To Defeat Tigers

- Florida Gulf Coast used a fast paced offense that relied heavily on shooting threes to defeat the Tigers. The Eagles shot 56-percent from beyond the arc, making 14 threes to defeat LSU, 88-74.
 - Although FGCU's style of play is unique in how many threes they take, LSU has another opponent that will play a similar style in Iowa State on December 2.

Pointer's Historic Triple-Double

- Guard Khayla Pointer made history when she became just the third player in LSU Women's Basketball history when she recorded 16 points, 13 assists (career high) and 11 rebounds in the season opening win over Nicholls.
 - It was the first time since 2010 that a Tiger recorded a triple-double when Katherine Graham did so with 20 points, 10 rebounds and 10 assists.
 - Cornelia Gayden recorded two triple-doubles during the 1995-95 season; first with 32 points, 15 rebounds and 10 assists and then with 43 points, 15 rebounds and 10 assists.
 - Pointer is one of three active players in the SEC to have recorded a triple-double in their careers. The other two are South Carolina's Aliyah Boston, who has two in her career, and Tennessee's Tamari Key.

Gusters Shines In LSU Debut

- Center Hannah Gusters was 9-14 shooting the ball and led LSU with 19 points in her debut wearing purple in gold in the Tigers' win over Nicholls. She also added 6 rebounds, 3 blocks and a steal.
 - Gusters recorded over half of her buckets in the third quarter when she was 5-7 and scored 11.
 - The Dallas native transferred to LSU from Baylor following Coach Mulkey to Baton Rouge. She was part of a post rotation in Waco that featured two All-Americans. Gusters is on the Preseason Watchlist for the Lisa Leslie Award as one of the nation's top centers.

Celebrating The Small Things

- Coach Mulkey has placed an emphasis on celebrating the small things as she looks to build LSU Women's Basketball
 - One example that Coach Mulkey has used is improving on last season's win total. The Tigers won nine games last year.
 - "I'm going to celebrate little things. I'm going to celebrate when we win 10 ball games because that's one more than the team previous won. I'm going to celebrate when we win enough and we don't have a losing season. I'm going to celebrate when we beat that first ranked opponent. You must celebrate those things because, what happens is, when you build a program, those things tend to be taken for granted." - Coach Mulkey

Receiving Votes In Preseason Polls

- When the Preseason AP Poll was released on October 19, the Tigers were receiving votes. LSU is also receiving votes in the Coache's Poll released last week

- LSU received enough votes to be considered the No. 31 team in the rankings
- The last time LSU was inside the AP Top-25 it was ranked No. 25 on December 2, 2019. November 4, 2014 is the last time LSU was inside the Coaches Top-25.

Respect The Past. Embrace The Future.

- In her first season leading the Tigers, Coach Mulkey is using the phrase, "Respect the past. Embrace the future."
- Coach Mulkey has brought new life to the program's alumni who are all excited about what the future of the program looks like under Coach Mulkey.
- Multiple former Tigers, including the Washington Mystics' Theresa Plaisance, attended Wednesday's practice. Other former players that were at practice included Shanece McKinney, Quianna Chaney, Rakell Spencer, Ayana Mitchell, Bonita Johnson, Lisa Brewer and Cornelia Gayden.
- Former Tiger Marie Ferdinand spoke to the team at a practice where she challenged every player on the team to be a great teammate.
- Elaine Powell. LSU's first player to be drafted to the WNBA, returned to the PMAC when LSU hosted Langston for an exhibition game. Powell is Langston's head coach.
- Seimone Augustus, whose No. 33 LSU jersey is retired, was at LSU's season opener and spoke to the team following practice on November 11.
- Coach Mulkey and her staff have sent out custom LSU Women's Basketball boxes filled with team apparel to former players around the country.

Senior Leadership

- Faustine Aifuwa, Jailin Cherry and Khayla Pointer are all back to use their additional year of eligibility and have provided great leadership under Coach Mulkey.
- Pointer was named to the Preseason All-SEC Team by both the league's coaches and media
- The experience the three of them bring into the 2021-22 season together includes 320 games played, 207 starts and 2,719 points

History To Sell

- LSU Women's Basketball has a rich history that features Hall of Fame Coaches, Final Fours and many WNBA Draft Picks
- Both the Women's Basketball Hall of Fame and the Naismith Basketball Hall of Fame has been kind to LSU Women's Basketball Coaches with former head coaches Sue Gunther and Van Chancellor along with current head coach Kim Mulkey have each been inducted into both Halls of Fame.
- From 2004-08, the Tigers went on a run to five straight NCAA Final Fours. In 1977 LSU finished as the runner up in the AIAW Tournament.
- LSU has had 18 players selected to the WNBA. It has had three players selected in the same year on two occasions in 2003 and 2008.

Record Season Ticket Sales

- When Coach Mulkey was hired in April, LSU saw a surge of season ticket sales for women's basketball with over 2,000 season ticket deposits the day after she was introduced to be the Tigers' coach.
- Coach Mulkey has set the goal of selling 5,000 season tickets in her first season and says it is important to sell tickets right away because of the message it sends to recruits and people outside the program
- LSU has sold 4,500+ season tickets, a program record.
- The previous record was set in the 2006-07 season when 2,947 season tickets were sold.

The Dream Team

- The Dream Team is the LSU Women's Basketball practice team that is comprised of male students at LSU. The Dream Team is designed to go up against the Tigers every day in practice to help push the team while allowing practices to run efficiently

Fast Break Club

- The Fast Break Club is the LSU Women's Basketball Booster Club that is designed to help the Tigers achieve both on and off the court
- It gives fans an opportunity to feel like they are apart of the program with monthly luncheons during the season that Coach Mulkey speaks at.
- The Fast Break Club has over 200 members already and is still growing in Coach Mulkey's first season leading the Tigers.

Te'a Cooper Visits Practice

- Te'a Cooper, who played for Coach Mulkey at Baylor, visited practice on October 5 and gave her former coach a great endorsement on Instagram afterwards.
- "Beyond grateful to have played for the living legend Kim Mulkey, one of the most genuine human beings I have ever met. If I had to do college all over again I would have played for her all four years. If you are trying to figure out where to go I'm telling you now PLAY FOR KIM you will learn how to succeed on and off the court."
- Cooper was selected in the second round of the 2020 WNBA Draft by Phoenix.

In The Polls

LSU WEEK-BY-WEEK	AP	COACHES
PRESEASON	RV	RV
WEEK 1	NR	--
WEEK 2	NR	NR
WEEK 3	NR	NR
WEEK 4	24	RV
WEEK 5	22	RV
WEEK 6	21	RV
WEEK 7	19	24
WEEK 8	13	16
WEEK 9	12	14
WEEK 10	11	10
WEEK 11	12	11
WEEK 12	15	15
WEEK 13	14	13
WEEK 14	11	12

AP POLL - JANUARY 10

NO.	TEAM	RECORD	LAST WEEK
1	SOUTH CAROLINA	15-1	1
2	STANFORD	11-3	2
3	LOUISVILLE	13-1	3
4	NC STATE	14-2	5
5	TENNESSEE	15-1	7
6	INDIANA	12-2	6
7	ARIZONA	11-1	4
8	MARYLAND	12-4	10
9	IOWA STATE	14-1	12
10	UCONN	7-3	11
11	MICHIGAN	13-2	8
12	LSU	15-2	13
13	TEXAS	11-2	9
14	BAYLOR	10-3	14
15	GEORGIA TECH	11-3	16
16	DUKE	11-2	17
17	GEORGIA	13-3	15
18	BYU	12-1	18
19	KENTUCKY	8-4	21
20	NOTRE DAME	11-3	20
21	UNC	14-1	19
22	COLORADO	13-0	NR
23	OKLAHOMA	13-2	23
24	USF	11-4	24
25	KANSAS STATE	13-2	NR

COACHES POLL - JANUARY 11

NO.	TEAM	RECORD	LAST WEEK
1	SOUTH CAROLINA	15-1	1
2	LOUISVILLE	13-1	2
3	STANFORD	9-3	3
4	NC STATE	14-2	4
5	INDIANA	12-2	6
6	TENNESSEE	15-1	8
7	ARIZONA	11-1	5
8	MARYLAND	12-4	9
9	IOWA STATE	14-1	12
10	MICHIGAN	13-2	7
11	UCONN	7-3	11
12	TEXAS	11-2	10
13	BAYLOR	10-3	13
14	LSU	15-2	16
15	GEORGIA	13-2	14
16	GEORGIA TECH	11-3	17
17	BYU	12-1	18
18	UNC	14-1	15
19	NOTRE DAME	11-3	19
20	KENTUCKY	8-4	20
21	DUKE	11-2	22
22	COLORADO	13-0	NR
23	FGCU	13-1	NR
24	USF	11-4	24
25	OKLAHOMA	13-2	25



2021-22 LSU Women's Basketball Combined Team Statistics All games

Game Records

Record	Overall	Home	Away	Neutral
ALL GAMES	22-4	12-2	6-2	4-0
CONFERENCE	10-3	5-1	5-2	0-0
NON-CONFERENCE	12-1	7-1	1-0	4-0

Score by Periods

Team	1st	2nd	3rd	4th	OT	TOT
LSU	500	459	503	498	8	1968
Opponents	358	347	467	395	6	1573

Team Box Score

No.	Player				Total		3-Point		F-Throw		Rebounds								PTS	AVG		
		GP-GS	MIN	AVG	FG-FGA	FG%	3FG-3FGA	3FG%	FT-FTA	FT%	OFF	DEF	TOT	AVG	PF	DQ	A	TO			BLK	STL
3	POINTER, Khayla	26-26	945:44	36.4	177-396	.447	40-100	.400	107-158	.677	32	126	158	6.1	36	0	133	68	6	46	501	19.3
45	MORRIS, Alexis	24-23	826:33	34.4	148-309	.479	30-89	.337	64-83	.771	17	86	103	4.3	41	0	71	46	6	46	390	16.3
24	AIFUWA, Faustine	26-23	605:56	23.3	111-215	.516	0-0	.000	38-65	.585	75	98	173	6.7	69	3	14	37	33	13	260	10.0
1	CHERRY, Jailin	25-24	758:05	30.3	106-276	.384	2-23	.087	15-25	.600	38	92	130	5.2	47	1	67	52	16	38	229	9.2
0	NEWBY, Autumn	25-22	723:29	28.9	56-108	.519	0-0	.000	36-60	.600	74	131	205	8.2	62	3	17	32	8	21	148	5.9
10	PAYNE, Ryann	24-5	357:56	14.9	49-119	.412	9-24	.375	22-28	.786	8	38	46	1.9	23	0	37	29	1	29	129	5.4
20	GUSTERS, Hannah	21-3	313:25	14.9	41-91	.451	0-0	.000	19-28	.679	21	42	63	3.0	29	0	11	24	17	4	101	4.8
32	TRASI, Awa	25-4	287:22	11.5	29-54	.537	1-2	.500	22-32	.688	32	36	68	2.7	37	1	9	19	3	8	81	3.2
30	HALL, Grace	7-0	35:10	5.0	6-9	.667	5-7	.714	4-4	1.000	1	4	5	0.7	1	0	2	3	0	1	21	3.0
15	PETTY, Ajae	10-0	66:10	6.6	9-16	.563	0-0	.000	11-21	.524	8	21	29	2.9	6	0	1	4	4	2	29	2.9
21	WARE, Timia	15-0	131:24	8.8	15-38	.395	2-11	.182	3-10	.300	6	14	20	1.3	12	0	12	20	1	7	35	2.3
11	WARD, Emily	6-0	40:04	6.7	6-11	.545	0-0	.000	0-0	.000	3	3	6	1.0	2	0	1	2	1	2	12	2.0
14	SHEMATSI, Sarah	14-0	88:59	6.4	8-29	.276	4-18	.222	1-4	.250	2	21	23	1.6	11	0	5	5	1	4	21	1.5
23	BARTLETT, Amani	9-0	44:43	5.0	4-7	.571	0-0	.000	3-4	.750	4	3	7	0.8	4	0	1	2	5	1	11	1.2
Team											42	59	101					15				
Total		26	5225		765-1678	.456	93-274	.339	345-522	.661	363	774	1137	43.7	380	8	381	358	102	222	1968	75.7
Opponents		26	5225		579-1553	.373	171-489	.350	244-362	.674	253	624	877	33.7	490	13	297	441	94	187	1573	60.5

Team Statistics

	LSU	OPP
Scoring	1968	1573
Points per game	75.7	60.5
Scoring margin	+15.2	-
Field goals-att	765-1678	579-1553
Field goal pct	.456	.373
3 point fg-att	93-274	171-489
3-point FG pct	.339	.350
3-pt FG made per game	3.6	6.6
Free throws-att	345-522	244-362
Free throw pct	.661	.674
F-Throws made per game	13.3	9.4
Rebounds	1137	877
Rebounds per game	43.7	33.7
Rebounding margin	+10.0	-
Assists	381	297
Assists per game	14.7	11.4
Turnovers	358	441
Turnovers per game	13.8	17.0
Turnover margin	+3.2	-
Assist/turnover ratio	1.1	0.7
Steals	222	187
Steals per game	8.5	7.2
Blocks	102	94
Blocks per game	3.9	3.6
Winning streak	5	-
Home win streak	4	-
Attendance	91942	25400
Home games-Avg/Game	14-6567	8-3175
Neutral site-Avg/Game	-	4-631

Team Results

Date	Opponent		Score	Att.
11/09/2021	Nicholls St.	W	82-40	5357
11/14/2021	FGCU	L	74-88	6091
11/18/2021	at Louisiana	W	70-41	2711
11/23/2021	Tulane	W	75-58	5882
11/26/2021	vs New Mexico St.	W	72-52	200
11/27/2021	vs Missouri St.	W	66-58	200
12/02/2021	Iowa St.	W	69-60	5810
12/12/2021	Texas Southern	W	96-55	6072
12/15/2021	Alcorn	W	100-36	5408
12/18/2021	Bradley	W	77-51	5624
12/20/2021	vs Clemson	W	70-56	1208
12/21/2021	vs Texas Tech	W	74-60	915
12/27/2021	Samford	W	83-47	6614
12/30/2021	at Georgia	W	68-62	3241
01/02/2022	Texas A&M	W	75-66	7400
01/06/2022	South Carolina	L	60-66	9190
01/09/2022	at Auburn	W	76-48	2308
01/13/2022	Missouri	Wot	87-85	5964
01/16/2022	Vanderbilt	W	82-64	6853
01/23/2022	at Florida	L	72-73	1478
01/27/2022	at Arkansas	L	76-90	3574
01/30/2022	Kentucky	W	78-69	8734
02/07/2022	at Ole Miss	W	68-64	2209
02/10/2022	Georgia	W	73-67	6943
02/13/2022	at Texas A&M	W	74-58	5278
02/17/2022	at Mississippi St.	W	71-59	4601



2021-22 LSU Women's Basketball Combined Team Statistics In Conference games

Game Records

Record	Overall	Home	Away	Neutral
ALL GAMES	10-3	5-1	5-2	0-0
CONFERENCE	10-3	5-1	5-2	0-0
NON-CONFERENCE	0-0	0-0	0-0	0-0

Score by Periods

Team	1st	2nd	3rd	4th	OT	TOT
LSU	252	198	242	260	8	960
Opponents	183	215	249	218	6	871

Team Box Score

No.	Player	Total			3-Point		F-Throw		Rebounds				Other Stats									
		GP-GS	MIN	AVG	FG-FGA	FG%	3FG-3FGA	3FG%	FT-FTA	FT%	OFF	DEF	TOT	AVG	PF	DQ	A	TO	BLK	STL	PTS	AVG
3	POINTER, Khayla	13-13	504:43	38.8	90-209	.431	26-61	.426	72-99	.727	9	58	67	5.2	16	0	65	34	4	27	278	21.4
45	MORRIS, Alexis	13-13	484:36	37.3	89-188	.473	21-52	.404	40-53	.755	9	52	61	4.7	25	0	36	29	3	23	239	18.4
24	AIFUWA, Faustine	13-13	370:50	28.5	62-118	.525	0-0	.000	17-26	.654	34	60	94	7.2	41	2	8	23	22	8	141	10.8
1	CHERRY, Jaillin	13-13	461:23	35.5	58-158	.367	0-6	.000	14-23	.609	22	61	83	6.4	24	0	48	31	8	18	130	10.0
0	NEWBY, Autumn	12-12	371:41	31.0	28-53	.528	0-0	.000	17-24	.708	40	68	108	9.0	36	2	9	18	4	8	73	6.1
10	PAYNE, Ryann	11-0	108:60	9.9	16-36	.444	1-6	.167	4-8	.500	2	13	15	1.4	9	0	9	10	0	6	37	3.4
20	GUSTERS, Hannah	12-0	138:50	11.6	14-34	.412	0-0	.000	8-10	.800	8	23	31	2.6	13	0	5	13	6	0	36	3.0
14	SHEMATSI, Sarah	4-0	22:40	5.7	2-9	.222	1-4	.250	0-0	.000	1	2	3	0.8	3	0	0	1	1	1	5	1.3
32	TRASI, Awa	13-1	120:02	9.2	6-16	.375	0-1	.000	4-10	.400	19	15	34	2.6	16	0	3	7	2	3	16	1.2
15	PETTY, Ajae	2-0	10:15	5.1	1-1	1.000	0-0	.000	0-0	.000	1	6	7	3.5	2	0	0	1	0	0	2	1.0
23	BARTLETT, Amani	2-0	08:02	4.0	0-1	.000	0-0	.000	1-2	.500	1	2	3	1.5	1	0	1	0	4	0	1	0.5
21	WARE, Timia	5-0	22:58	4.6	1-5	.200	0-3	.000	0-0	.000	2	1	3	0.6	2	0	1	1	0	0	2	0.4
Team											18	24	42				8					
Total		13	2625		367-828	.443	49-133	.368	177-255	.694	166	385	551	42.4	188	4	185	176	54	94	960	73.8
Opponents		13	2625		323-817	.395	91-237	.384	134-196	.684	135	321	456	35.1	247	6	165	184	50	96	871	67.0

Team Statistics

	LSU	OPP
Scoring	960	871
Points per game	73.8	67.0
Scoring margin	+6.8	-
Field goals-att	367-828	323-817
Field goal pct	.443	.395
3 point fg-att	49-133	91-237
3-point FG pct	.368	.384
3-pt FG made per game	3.8	7.0
Free throws-att	177-255	134-196
Free throw pct	.694	.684
F-Throws made per game	13.6	10.3
Rebounds	551	456
Rebounds per game	42.4	35.1
Rebounding margin	+7.3	-
Assists	185	165
Assists per game	14.2	12.7
Turnovers	176	184
Turnovers per game	13.5	14.2
Turnover margin	+0.6	-
Assist/turnover ratio	1.1	0.9
Steals	94	96
Steals per game	7.2	7.4
Blocks	54	50
Blocks per game	4.2	3.8
Winning streak	5	-
Home win streak	4	-
Attendance	45084	22689
Home games-Avg/Game	6-7514	7-3241
Neutral site-Avg/Game	-	0-0

Team Results

Date	Opponent	Score	Att.
12/30/2021	at Georgia	W 68-62	3241
01/02/2022	Texas A&M	W 75-66	7400
01/06/2022	South Carolina	L 60-66	9190
01/09/2022	at Auburn	W 76-48	2308
01/13/2022	Missouri	Wot 87-85	5964
01/16/2022	Vanderbilt	W 82-64	6853
01/23/2022	at Florida	L 72-73	1478
01/27/2022	at Arkansas	L 76-90	3574
01/30/2022	Kentucky	W 78-69	8734
02/07/2022	at Ole Miss	W 68-64	2209
02/10/2022	Georgia	W 73-67	6943
02/13/2022	at Texas A&M	W 74-58	5278
02/17/2022	at Mississippi St.	W 71-59	4601



**2021-22 LSU Women's Basketball
Team Game-by-Game
All games**

Opponent	Date	Score	W	Total		3-Pointers		Free throws		Rebounds				Other Stats						
				FG-FGA	PCT	3FG-3FGA	PCT	FT-FTA	PCT	OFF	DEF	TOT	AVG	PF	A	TO	BLK	STL	PTS	AVG
Nicholls St.	11/09/2021	82-40	W	34-64	.531	6-14	.429	8-15	.533	11	33	44	44.0	13	23	16	5	12	82	82.0
FGCU	11/14/2021	74-88	L	31-70	.443	1-6	.167	11-17	.647	14	29	43	43.5	16	11	16	4	9	74	78.0
at Louisiana	11/18/2021	70-41	W	27-65	.415	3-10	.300	13-21	.619	14	38	52	46.3	19	6	19	2	9	70	75.3
Tulane	11/23/2021	75-58	W	32-67	.478	1-10	.100	10-15	.667	16	27	43	45.5	15	16	13	6	7	75	75.3
vs New Mexico St.	11/26/2021	72-52	W	25-65	.385	2-10	.200	20-29	.690	21	27	48	46.0	18	10	12	6	4	72	74.6
vs Missouri St.	11/27/2021	66-58	W	24-57	.421	2-4	.500	16-24	.667	13	24	37	44.5	15	9	13	3	8	66	73.2
Iowa St.	12/02/2021	69-60	W	28-62	.452	7-10	.700	6-9	.667	5	27	32	42.7	12	14	7	1	10	69	72.6
Texas Southern	12/12/2021	96-55	W	36-58	.621	6-9	.667	18-26	.692	13	35	48	43.4	13	26	18	7	13	96	75.5
Alcorn	12/15/2021	100-36	W	38-62	.613	6-16	.375	18-29	.621	17	29	46	43.7	11	17	13	0	17	100	78.2
Bradley	12/18/2021	77-51	W	32-72	.444	1-14	.071	12-22	.545	21	32	53	44.6	13	8	16	2	14	77	78.1
vs Clemson	12/20/2021	70-56	W	24-58	.414	3-18	.167	19-33	.576	14	26	40	44.2	19	16	17	3	12	70	77.4
vs Texas Tech	12/21/2021	74-60	W	33-75	.440	1-6	.167	7-11	.636	20	26	46	44.3	16	19	11	3	4	74	77.1
Samford	12/27/2021	83-47	W	34-75	.453	5-14	.357	10-16	.625	18	36	54	45.1	12	21	11	6	9	83	77.5
at Georgia	12/30/2021	68-62	W	28-61	.459	4-11	.364	8-15	.533	11	25	36	44.4	7	15	14	2	15	68	76.9
Texas A&M	01/02/2022	75-66	W	27-63	.429	8-19	.421	13-25	.520	16	33	49	44.7	13	19	14	5	4	75	76.7
South Carolina	01/06/2022	60-66	L	28-66	.424	1-7	.143	3-7	.429	10	14	24	43.4	23	12	9	3	7	60	75.7
at Auburn	01/09/2022	76-48	W	29-64	.453	3-7	.429	15-19	.789	14	38	52	43.9	16	14	15	13	9	76	75.7
Missouri	01/13/2022	87-85	Wot	37-77	.481	5-19	.263	8-9	.889	16	29	45	44.0	14	21	12	6	9	87	76.3
Vanderbilt	01/16/2022	82-64	W	35-60	.583	3-9	.333	9-17	.529	9	34	43	43.9	14	23	15	4	10	82	76.6
at Florida	01/23/2022	72-73	L	28-65	.431	1-9	.111	15-19	.789	13	30	43	43.9	16	8	19	4	8	72	76.4
at Arkansas	01/27/2022	76-90	L	30-67	.448	4-14	.286	12-19	.632	12	27	39	43.7	19	12	16	3	3	76	76.4
Kentucky	01/30/2022	78-69	W	28-64	.438	5-8	.625	17-24	.708	14	20	34	43.2	12	13	8	3	6	78	76.5
at Ole Miss	02/07/2022	68-64	W	25-67	.373	1-2	.500	17-28	.607	17	33	50	43.5	18	13	11	1	9	68	76.1
Georgia	02/10/2022	73-67	W	21-54	.389	4-7	.571	27-34	.794	13	34	47	43.7	14	12	19	1	5	73	76.0
at Texas A&M	02/13/2022	74-58	W	25-59	.424	5-9	.556	19-24	.792	13	31	44	43.7	12	10	13	5	6	74	75.9
at Mississippi St.	02/17/2022	71-59	W	26-61	.426	5-12	.417	14-15	.933	8	37	45	43.7	10	13	11	4	3	71	75.7
Total		1968		765-1678	.456	93-274	.339	345-522	.661	363	774	1137	43.7	380	381	358	102	222	1968	75.7
Opponents		1573		579-1553	.373	171-489	.350	244-362	.674	253	624	877	33.7	490	297	441	94	187	1573	60.5

LSU Averages

Games Played	Points/game	FG Pct	3FG Pct	FT Pct	Rebounds/game	Assists/game	Turnovers/game	Assist/Turnover ratio	Steals/game	Blocks/game
26	75.7	45.6	33.9	66.1	43.7	14.7	13.8	1.1	8.5	3.9



**2021-22 LSU Women's Basketball
Opponents Game-by-Game
All games**

Opponent	Date	Score	W	Total		3-Pointers		Free throws		Rebounds				Other Stats							
				FG-FGA	PCT	3FG-3FGA	PCT	FT-FTA	PCT	OFF	DEF	TOT	AVG	PF	A	TO	BLK	STL	PTS	AVG	
Nicholls St.	11/09/2021	82-40	W	13-50	.260	4-14	.286	10-14	.714	5	22	27	27.0	16	8	20	2	9	40	40.0	
FGCU	11/14/2021	74-88	L	34-64	.531	14-25	.560	6-11	.545	4	29	33	30.0	20	16	16	4	8	88	64.0	
at Louisiana	11/18/2021	70-41	W	14-52	.269	3-11	.273	10-16	.625	5	24	29	29.7	18	2	26	2	9	41	56.3	
Tulane	11/23/2021	75-58	W	21-66	.318	7-27	.259	9-16	.563	21	22	43	33.0	16	9	17	2	7	58	56.8	
vs New Mexico St.	11/26/2021	72-52	W	19-53	.358	5-18	.278	9-15	.600	9	23	32	32.8	29	12	17	4	5	52	55.8	
vs Missouri St.	11/27/2021	66-58	W	22-61	.361	3-14	.214	11-14	.786	16	24	40	34.0	18	10	17	7	9	58	56.2	
Iowa St.	12/02/2021	69-60	W	21-52	.404	9-23	.391	9-10	.900	5	31	36	34.3	16	10	16	2	3	60	56.7	
Texas Southern	12/12/2021	96-55	W	20-59	.339	7-14	.500	8-12	.667	6	14	20	32.5	18	11	19	7	8	55	56.5	
Alcorn	12/15/2021	100-36	W	13-50	.260	6-25	.240	4-8	.500	9	12	21	31.2	21	11	26	2	6	36	54.2	
Bradley	12/18/2021	77-51	W	19-58	.328	8-30	.267	5-10	.500	11	25	36	31.7	14	12	27	5	10	51	53.9	
vs Clemson	12/20/2021	70-56	W	21-54	.389	3-8	.375	11-14	.786	8	26	34	31.9	29	5	21	2	8	56	54.1	
vs Texas Tech	12/21/2021	74-60	W	22-54	.407	8-20	.400	8-11	.727	7	24	31	31.8	14	15	19	1	2	60	54.6	
Samford	12/27/2021	83-47	W	17-63	.270	3-23	.130	10-15	.667	12	27	39	32.4	14	11	16	4	7	47	54.0	
at Georgia	12/30/2021	68-62	W	27-61	.443	5-11	.455	3-6	.500	11	25	36	32.6	18	14	18	7	7	62	54.6	
Texas A&M	01/02/2022	75-66	W	23-70	.329	10-31	.323	10-11	.909	13	26	39	33.1	20	13	11	4	7	66	55.3	
South Carolina	01/06/2022	60-66	L	22-50	.440	4-10	.400	18-32	.563	19	29	48	34.0	12	10	21	7	4	66	56.0	
at Auburn	01/09/2022	76-48	W	15-65	.231	1-13	.077	17-21	.810	15	22	37	34.2	18	4	13	3	6	48	55.5	
Missouri	01/13/2022	87-85	Wot	30-63	.476	15-31	.484	10-16	.625	6	25	31	34.0	15	18	16	0	4	85	57.2	
Vanderbilt	01/16/2022	82-64	W	25-74	.338	8-24	.333	6-9	.667	18	17	35	34.1	18	12	15	1	10	64	57.5	
at Florida	01/23/2022	72-73	L	24-64	.375	6-17	.353	19-22	.864	10	26	36	34.2	19	11	16	3	15	73	58.3	
at Arkansas	01/27/2022	76-90	L	31-62	.500	13-25	.520	15-23	.652	6	23	29	33.9	16	19	12	1	12	90	59.8	
Kentucky	01/30/2022	78-69	W	27-54	.500	7-17	.412	8-11	.727	9	26	35	34.0	22	8	19	6	3	69	60.2	
at Ole Miss	02/07/2022	68-64	W	26-65	.400	2-12	.167	10-17	.588	9	30	39	34.2	23	13	12	6	4	64	60.4	
Georgia	02/10/2022	73-67	W	25-62	.403	7-11	.636	10-13	.769	4	25	29	34.0	29	15	11	4	11	67	60.7	
at Texas A&M	02/13/2022	74-58	W	24-60	.400	6-15	.400	4-7	.571	6	20	26	33.6	23	16	12	7	5	58	60.6	
at Mississippi St.	02/17/2022	71-59	W	24-67	.358	7-20	.350	4-8	.500	9	27	36	33.7	14	12	8	1	8	59	60.5	
Total		1573		579-1553	.373	171-489	.350	244-362	.674	253	624	877	33.7	490	297	441	94	187	1573	60.5	
LSU		1968		765-1678	.456	93-274	.339	345-522	.661	363	774	1137	43.7	380	381	358	102	222	1968	75.7	

Opponents Averages

Games Played	Points/game	FG Pct	3FG Pct	FT Pct	Rebounds/game	Assists/game	Turnovers/game	Assist/Turnover ratio	Steals/game	Blocks/game
26	60.5	37.3	35.0	67.4	33.7	11.4	17.0	0.7	7.2	3.6

LSU Specialty Stats

Opponent	Points off turnovers	Points in paint	Second Chance Points	Fast Break Points	Bench Points
Nicholls	16	42	6	14	19
Florida Gulf Coast	19	40	11	8	26
at UL-Lafayette	26	36	23	20	41
Tulane	25	46	11	8	15
New Mexico State	17	28	10	16	21
Missouri State	16	30	10	4	14
Iowa State	14	34	1	8	16
Texas Southern	25	48	16	19	45
Alcorn State	36	48	22	30	54
Bradley	34	44	13	27	21
Clemson	24	28	19	9	15
Texas Tech	14	38	16	14	4
Samford	23	40	9	15	25
at Georgia	20	38	7	12	3
Texas A&M	15	30	8	7	6
South Carolina	19	36	8	8	2
at Auburn	15	42	11	13	18
Missouri	20	42	10	8	10
Vanderbilt	23	48	14	27	9
at Florida	8	42	9	14	15
at Arkansas	11	30	9	11	14
Kentucky	22	34	22	16	2
at Ole Miss	18	38	11	10	2
Georgia	6	12	13	2	4
at Texas A&M	15	24	7	10	2
at Mississippi State	11	26	6	10	8
Florida					
Alabama					
at Tennessee					
Total/Average	492/18.9	944/36.3	302/11.6	340/13.1	311/11.9

Opponent Specialty Stats

Opponent	Points off turnovers	Points in paint	Second Chance Points	Fast Break Points	Bench Points
Nicholls	7	6	4	6	12
Florida Gulf Coast	23	40	8	14	28
at UL-Lafayette	10	18	4	11	9
Tulane	11	24	16	4	8
New Mexico State	1	14	8	8	24
Missouri State	11	36	18	4	2
Iowa State	4	20	2	4	4
Texas Southern	16	18	7	5	3
Alcorn State	8	6	0	5	12
Bradley	14	16	8	3	40
Clemson	14	26	7	8	16
Texas Tech	8	22	6	5	30
Samford	5	22	9	4	10
at Georgia	19	26	6	26	15
Texas A&M	4	20	16	17	8
South Carolina	7	30	12	3	1
at Auburn	16	24	6	7	11
Missouri	17	28	5	2	3
Vanderbilt	15	20	19	13	16
at Florida	22	26	4	28	12
at Arkansas	20	26	8	12	13
Kentucky	8	26	16	7	14
at Ole Miss	10	28	12	5	32
Georgia	14	14	3	13	34
at Texas A&M	11	20	0	6	13
at Mississippi State	14	34	5	14	2
Florida					
Alabama					
at Tennessee					
Total/Average	309/11.9	590/22.7	209/8.0	234/9.0	362/13.9

Kim Mulkey Is Home



After three national championships as a head coach, two as a player, and one as an assistant coach, Kim Mulkey is home.

Mulkey, the most successful player-turned-coach in college basketball history, has been named head coach of the LSU women's basketball team, Director of Athletics Scott Woodward announced on Sunday, April 25, 2021.

A native of Tickfaw, La., Mulkey comes to Baton Rouge as the most accomplished head coaching hire in LSU history. She returns to Louisiana as a six-time national champion and nine-time Hall of Famer who is set for induction into the Naismith Memorial Basketball Hall of Fame in May.

Mulkey, who also won an Olympic Gold Medal in 1984, is the only person in college basketball history – men's or women's – to win national championships as a head coach, assistant coach and a player. She's one of just three coaches (Bobby Knight and Dean Smith) in college basketball history to win national titles as a player and a coach.

In taking over for the Tigers, Mulkey becomes the eighth head coach in LSU women's basketball history. Mulkey, who became the fastest coach in Division I history to reach 600 wins (needing only 700 games) in 2020, brings an overall head coaching mark of 632-104 to LSU. Her 600 wins in 700 games bettered the previous mark held by Adolph Rupp of Kentucky, who needed 704 games.

In 21 years as the head coach at Baylor, Mulkey led the Lady Bears to four Final Fours, winning three national titles. Her teams reached the Elite Eight six times and the Sweet 16 on five other occasions. In all, she led Baylor to an NCAA Tournament appearance 19 times in 20 years. She led Baylor to the Women's NIT championship game in her third year in Waco.

In conference play, Mulkey guided Baylor to a combined 23 Big 12 regular-season and tournament titles.

A member of the 2020 Naismith Memorial Basketball Hall of Fame Class, Mulkey built Baylor into a national power, as they became just the third program in NCAA history to have at least three national titles to its credit when the Lady Bears beat Notre Dame, 82-81, on April 7, 2019. Mulkey's other national championships at Baylor came in 2005 and 2012. Baylor's NCAA title in 2005 was the first for a women's sport in school history, and in 2012, she directed her team to the first 40-0 mark in NCAA history, capped off by a victory over Notre Dame in the championship game.

Mulkey has been named National Coach of the Year eight times from various entities, and she was selected as the Big 12 Coach of the Year eight times. She's taken home the New York Athletic Club's Winged Foot Award after each national championship as a head coach.

Individually, Mulkey has developed and produced some of the top players in women's basketball history. At Baylor, she coached 19 different All-Americans to 85 honors by various entities, and eight players under her watch earned first-team All-America status by either the Associated Press, USBWA, WBCA or John Wooden selections.

Mulkey By The Numbers

6
National Championships*

8x
National Coach of the Year

9
Hall of Fame Inductions

650
Fastest DI Coach to 650 victories

1984
Olympic Gold Medalist

***Only person in college basketball history - men's or women's - to win national championships as a player, assistant and head coach**

Mulkey's Halls of Fame

National High School Hall of Fame (1985)
Louisiana High School Hall of Fame (1986)
Louisiana Sports Writers Hall of Fame (1990)
Louisiana Tech Athletics Hall of Fame (1992)
Women's Basketball Hall of Fame (2000)
CoSIDA Academic Hall of Fame (2003)
Baylor Athletics Hall of Fame (2007)
Texas Sports Hall of Fame (2010)
Naismith Memorial Basketball Hall of Fame (2020)

Coaching Record

Louisiana Tech Record: 430-68 (.863)
Baylor Record: 632-104 (.859)
LSU Record: 22-4 (.846)
Head Coaching Record: 654-108 (.858)

Playing Record

Record at Louisiana Tech: 130-6 (.956)
Record at Hammond High: 136-5 (.964)

The Timeline of Mulkey

2021

- Named LSU's Head Women's Basketball Coach

2020

- Big 12 Coach of the Year
- Naismith Memorial Basketball Hall of Fame Inductee

2019

- AP National Coach of the Year
- USBWA Coach of the Year
- WBCA Coach of the Year
- Winged Foot Award (New York Athletic Club)
- Big 12 Coach of the Year

2018

- WBCA Regional Coach of the Year
- Big 12 Coach of the Year
- Naismith Memorial Basketball Hall of Fame Class women's committee finalist

2017

- One of 13 Naismith Memorial Basketball Hall of Game Class women's committee nominations

2016

- WBCA Regions 5 Coach of the Year
- Big 12 Coach of the Year – Waco Tribune-Herald

2015

- Big 12 Coach of the Year
- WBCA Regions 5 Coach of the Year
- Big 12 Coach of the Year – Dallas Morning News

2014

- Selected No. 40 on Louisiana's all-time top athletes list
- Inducted into the Ark-La-Tex Museum of Champions

2013:

- Big 12 Coach of the Year
- Big 12 Coach of the Year – Dallas Morning News and Waco Tribune-Herald

2012

- Won NCAA National Championship
- AP National Coach of the Year
- Naismith National Coach of the Year
- Russell Athletic/WBCA National Coach of the Year
- USBWA National Coach of the Year
- Naismith National Coach of the Year
- Winged Foot award (New York Athletic Club)
- Big 12 Coach of the Year
- Big Coach of the Year – Dallas Morning News and Waco Tribune-Herald

2011

- USBWA National Coach of the Year
- Big 12 Coach of the Year

2010:

- Texas Sports Hall of Fame Inductee

2007:

- Baylor Athletic Hall of Fame Inductee

2005:

- Won NCAA National Championship
- Big 12 Coach of the Year
- Winged Foot Award (New York Athletic Club)
- Dallas All Sports Association College Coach of the Year
- Texas Association of Basketball Coaches (TABC) Senior College Coach of the Year
- Baylor Staff Member of the Year (Student Government Association)

2004

- Texas Association of Basketball Coaches (TABC) Senior College Coach of the Year

2003

- Inducted into CoSIDA Academic All-America Hall of Fame

2002

- Texas Association of Basketball Coaches (TABC) Senior College Coach of the Year

2001

- Named one of top 50 Female High School Athletes of the 20th century
- National Coach of the Year-- Real Sport Magazine
- Big 12 Coach of the Year -- Dallas Morning News and Waco Tribune-Herald

2000

- Named Baylor's fourth head women's basketball coach
- Inducted into the Women's Basketball Hall of Fame

1999

- Lone female named among Louisiana Sports Writers Association's (LSWA) top 25 athletes of the 20th century
- Named one of top three assistants by Women's Basketball Journal
- Listed by Sports Illustrated as one of the top 50 greatest Louisiana sports figures of the 20th century

1992

- Inducted into Louisiana Tech Athletics Hall of Fame

1990

- Inducted into Louisiana Sports Writers Hall of Fame

1988

- Won the NCAA National Championship as an assistant coach at Louisiana Tech

1986

- Inducted into Louisiana High School Hall of Fame

1985

- Inducted into National High School Hall of Fame
- Began her coaching career as an assistant at Louisiana Tech

1984

- NCAA Postgraduate Scholarship winner
- Academic All-American
- James Corbett Award (Louisiana's College Athlete of the Year)
- Naismith "Small Player of the Year"
- Olympic Gold medalist at Los Angeles Games

1983

- Won Gold medal at Pan Am Games in Caracas, Venezuela
- Academic All-American

1982

- Member of USA Basketball Select Team
- Won NCAA National Championship as a player at Louisiana Tech

1981

- Won Gold medal for South Team at Olympic Festival (Syracuse, N.Y.)
- Won AIAW National Championship as a player at Louisiana Tech

Kim Mulkey: A Proven Winner

Mulkey's Coaching Record

Year	School	Position	Record	Postseason
2021-22	LSU	Head Coach	22-4	TBD
2020-21*	Baylor	Head Coach	28-3	NCAA ELITE 8
2019-20	Baylor	Head Coach	28-2	Big 12 RS Champions
2018-19	Baylor	Head Coach	37-1	NCAA Champions
2017-18	Baylor	Head Coach	33-2	NCAA Sweet 16
2016-17	Baylor	Head Coach	33-4	NCAA Elite Eight
2015-16	Baylor	Head Coach	36-2	NCAA Elite Eight
2014-15	Baylor	Head Coach	33-4	NCAA Elite Eight
2013-14	Baylor	Head Coach	32-5	NCAA Elite Eight
2012-13	Baylor	Head Coach	34-2	NCAA Sweet 16
2011-12	Baylor	Head Coach	40-0	NCAA Champions
2010-11	Baylor	Head Coach	34-3	NCAA Elite Eight
2009-10	Baylor	Head Coach	27-10	NCAA Final Four
2008-09	Baylor	Head Coach	29-6	NCAA Sweet 16
2007-08	Baylor	Head Coach	25-7	NCAA Second Round
2006-07	Baylor	Head Coach	26-8	NCAA Second Round
2005-06	Baylor	Head Coach	26-7	NCAA Sweet 16
2004-05	Baylor	Head Coach	33-3	NCAA Champions
2003-04	Baylor	Head Coach	26-9	NCAA Sweet 16
2002-03	Baylor	Head Coach	24-11	WNIT Finals
2001-02	Baylor	Head Coach	27-6	NCAA Second Round
2000-01	Baylor	Head Coach	21-9	NCAA First Round
1999-00	La. Tech	Assoc. Head Coach	31-3	NCAA Elite Eight
1998-99	La. Tech	Assoc. Head Coach	30-3	NCAA Final Four
1997-98	La. Tech	Assoc. Head Coach	31-4	NCAA National Runner-Up
1996-97	La. Tech	Assoc. Head Coach	31-4	NCAA Sweet 16
1995-96	La. Tech	Assistant Coach	31-2	NCAA Elite Eight
1994-95	La. Tech	Assistant Coach	28-5	NCAA Sweet 16
1993-94	La. Tech	Assistant Coach	31-4	NCAA National Runner-Up
1992-93	La. Tech	Assistant Coach	26-6	NCAA Elite Eight
1991-92	La. Tech	Assistant Coach	20-10	NCAA First Round
1990-91	La. Tech	Assistant Coach	18-12	NCAA First Round
1989-90	La. Tech	Assistant Coach	32-1	NCAA Final Four
1988-89	La. Tech	Assistant Coach	32-4	NCAA Final Four
1987-88	La. Tech	Assistant Coach	32-2	NCAA Champions
1986-87	La. Tech	Assistant Coach	30-3	NCAA National Runner-Up
1985-86	La. Tech	Assistant Coach	27-5	NCAA Elite Eight

*No postseason due to Covid-19

Louisiana Tech Record: 430-68 (.863)

Baylor Record: 632-104 (.859)

LSU Record: 22-4 (.846)

Head Coaching Record: 654-108 (.858)

Mulkey's Playing Record

Year	School	Record	Postseason
1983-84	Louisiana Tech	30-3	NCAA Final Four
1982-83	Louisiana Tech	31-2	NCAA National Runner-Up
1981-82	Louisiana Tech	35-1	NCAA National Champions
1980-81	Louisiana Tech	34-0	AIAW National Champions

Collegiate Record: 130-6 (.956)

Mulkey's Milestone Victories

WIN	OPPONENT	SCORE	DATE
1	Miami (Ohio)	75-62	11/18/00
50	Alcorn state	78-62	11/23/02
100	At Mississippi State	66-49	11/23/04
150	Texas Tech	73-60	2/19/06
200	At Missouri	72-57	1/23/08
250	Texas State	99-18	1/2/10
300	Chattanooga	91-31	11/31/11
350	Oklahoma State	83-49	1/6/13
400	Oklahoma State	65-61	3/9/14
450	James Madison	77-63	12/21/15
500	Texas Tech	86-48	2/25/17
550	Texas Tech	73-56	1/16/19
600	Texas Tech	77-62	2/18/20
650	Kentucky	78-69	1/30/22

Mulkey is fastest coach in Division I history - men's or women's - to reach 650 wins (needing only 758 games) in 2022.



LAST TIME

AN LSU PLAYER...

scored 20 points.....	Alexis Morris, 23 at Mississippi St. (Feb. 17, 2022)
scored 25 points.....	Alexis Morris, 25 and Khayla Pointer, 25 at Texas A&M (Feb. 13, 2022)
scored 30 points.....	Khayla Pointer, 35 at Florida (Jan. 23, 2022)
scored 35 points.....	Khayla Pointer, 35 at Florida (Jan. 23, 2022)
scored 40 points.....	Cornelia Gayden, 49, Jackson State (Feb. 9, 1995)
scored 45 points.....	Cornelia Gayden, 49, Jackson State (Feb. 9, 1995)
scored double figures in 5 straight games.....	Khayla Pointer, 16 straight (Dec. 20, 2021 - Feb. 17, 2022)
scored double figures in 10 straight games.....	Khayla Pointer, 16 straight (Dec. 20, 2021 - Feb. 17, 2022)
scored double figures in 15 straight games.....	Khayla Pointer, 15 straight (Dec. 20, 2021 - Feb. 13, 2022)
scored double figures in 20 straight games.....	Raigyne Louis, 25 straight (Jan. 12, 2017 - Dec. 17, 2017)
scored double figures in 25 straight games.....	Raigyne Louis, 25 straight (Jan. 12, 2017 - Dec. 17, 2017)
scored double figures in 30 straight games.....	Theresa Plaisance, 31 straight (Nov. 16-March 24, 2013)
scored double figures in 40 straight games.....	Seimone Augustus, 97 straight (Dec. 20, 2003 - April 2, 2006)
scored double figures in 50 straight games.....	Seimone Augustus, 97 straight (Dec. 20, 2003 - April 2, 2006)
scored double figures in 60 straight games.....	Seimone Augustus, 97 straight (Dec. 20, 2003 - April 2, 2006)
scored double figures in 70 straight games.....	Seimone Augustus, 97 straight (Dec. 20, 2003 - April 2, 2006)
scored double figures in 80 straight games.....	Seimone Augustus, 97 straight (Dec. 20, 2003 - April 2, 2006)
scored double figures in 90 straight games.....	Seimone Augustus, 97 straight (Dec. 20, 2003 - April 2, 2006)
scored 20 points in 2 straight games.....	Alexis Morris, 3 straight (Feb. 10, 2022-Feb. 17, 2022)
scored 20 points in 3 straight games.....	Alexis Morris, 3 straight (Feb. 10, 2022-Feb. 17, 2022)
scored 20 points in 4 straight games.....	Chloe Jackson, 4 straight (Jan. 5 - Jan. 15, 2017)
scored 20 points in 5 straight games.....	Seimone Augustus, 9 straight (Feb. 16, 2006 - March 20, 2006)
scored 20 points in 6 straight games.....	Seimone Augustus, 9 straight (Feb. 16, 2006 - March 20, 2006)
scored 20 points in 7 straight games.....	Seimone Augustus, 9 straight (Feb. 16, 2006 - March 20, 2006)
scored 20 points in 8 straight games.....	Seimone Augustus, 9 straight (Feb. 16, 2006 - March 20, 2006)
scored 20 points in 9 straight games.....	Seimone Augustus, 9 straight (Feb. 16, 2006 - March 20, 2006)
scored 20 points in 10 straight games.....	Cornelia Gayden, 13 straight (March 1, 1993 - Jan. 1, 1994)
scored 20 points in 13 straight games.....	Cornelia Gayden, 13 straight (March 1, 1993 - Jan. 1, 1994)
scored 30 points in 2 straight games.....	Elaine Powell, 31 vs. UC Santa Barbara (March 21, 1996 • NWIT), 32 vs. Northwestern (March 22, 1996 • NWIT)
scored 30 points in 3 straight games.....	Cornelia Gayden, 3 straight (Feb. 4 - Feb. 9, 1995)
made 10 field goals in a game.....	Alexis Morre, 10-16 at Texas A&M (Feb. 13, 2022)
made 15 field goals in a game.....	Chloe Jackson, 15, Florida (Jan. 5, 2017)
attempted 20 field goals in a game.....	Khayla Pointer, 27 at Florida (Jan. 23, 2022)
attempted 25 field goals in a game.....	Khayla Pointer, 27 at Florida (Jan. 23, 2022)
shot 100% from the floor (min. 10 att.).....	Ayana Mitchell (10-10), at Oklahoma (Dec. 7, 2019)
made 10 free throws in a game.....	Khayla Pointer, 12-16 and Alexis Morris, 13-14 vs. Georgia (Feb. 10, 2022)
made 15 free throws in a game.....	Raigyne Louis, 15, vs. Rutgers (Nov. 29, 2013)
attempted 10 free throws in a game.....	Khayla Pointer, 12-16 and Alexis Morris, 13-14 vs. Georgia (Feb. 10, 2022)
attempted 15 free throws in a game.....	Khayla Pointer, 12-16 Georgia (Feb. 10, 2022)
attempted 20 free throws in a game.....	Raigyne Louis, 20, vs. Rutgers (Nov. 29, 2013)
made 5 three-pointers in a game.....	Alexis Morris, 5, Iowa St. (Dec. 2, 2021)
made 7 three-pointers in a game.....	Pietra Gay, 7, at #21 Auburn (Jan. 25, 1997)
made 10 three-pointers in a game.....	Cornelia Gayden, 12, Jackson State (Feb. 9, 1995)
attempted 7 three-pointers in a game.....	Khayla Pointer, 9, vs. Missouri (Jan. 13, 2022)
attempted 10 three-pointers in a game.....	Awa Trasi, 10, #25 Tennessee (Feb. 13, 2020)
attempted 15 three-pointers in a game.....	Doneeka Hodges, 15, at #17 Georgia (Jan. 25, 2004)
had 10 rebounds.....	Autumn Newby, 13 and Faustine Aifuwa, 13 at Mississippi St. (Feb. 17, 2022)
had 15 rebounds.....	Faustine Aifuwa, 16, Ole Miss (Jan. 31, 2021)
had 20 rebounds.....	Ayana Mitchell, 21, Auburn (March 3, 2019)
had 10 rebounds in 2 straight games.....	Autumn Newby, 13 at TAMU (Feb. 13, 2022), 13 at MSU (Feb. 17, 2022)
had 10 rebounds in 3 straight games.....	Faustine Aifuwa, 13, vs. Pacific (Dec. 19, 2020) • 10, vs. LMU (Dec. 20, 2020) • 10, Auburn (Dec. 31, 2020)
had 10 rebounds in 4 straight games.....	Faustine Aifuwa, 4 straight (Dec. 14, 2020 - Dec. 31, 2020)
had 10 rebounds in 5 straight games.....	Ayana Mitchell, 5 straight (Jan. 2, 2020 - Jan. 16, 2020)
had 10 rebounds in 10 straight games.....	Sylvia Fowles, 19 straight (Dec. 30, 2006 - March 3, 2007)
had 10 offensive rebounds.....	Ayana Mitchell, 10, at Missouri (Jan. 5, 2020)
had 10 defensive rebounds.....	Autumn Newby, 10, at ULL (Nov. 18, 2021)
had 10 assists.....	Khayla Pointer, 11, at Ole Miss (Feb. 7, 2022)
had 15 assists.....	Temeka Johnson, 15, vs. Liberty (March 26, 2005 • NCAA Sweet 16)
had 10 assists in 2 straight games.....	Erica White, 3 straight (Jan. 22, 2006 - Jan. 30, 2006)
had 10 assists in 3 straight games.....	Erica White, 3 straight (Jan. 22, 2006 - Jan. 30, 2006)
had 10 assists in 4 straight games.....	never happened
had 5 blocks in a game.....	Faustine Aifuwa, 7, at #1 South Carolina (Feb. 14, 2021)
had 7 blocks in a game.....	Faustine Aifuwa, 7, at #1 South Carolina (Feb. 14, 2021)
had 9 blocks in a game.....	Theresa Plaisance, 9, at Alabama (March 2, 2014 • Tied School Record)
had 5 steals in a game.....	Ryann Payne, 5, vs. Iowa St. (Dec. 2, 2021)
had 7 steals in a game.....	Raigyne Louis, 8, Vanderbilt (Dec. 31, 2017)
had 10 steals in a game.....	Raigyne Louis, 10, Florida (Jan. 5, 2017)
had a double-double.....	Khayla Pointer - 16 pts., 11, rbd, 10 ast. and Faustine Aifuwa, 20 pts., 14 rbd. at Ole Miss (Feb. 7, 2022)
had a double-double in 2 straight games.....	Faustine Aifuwa, 14 pts, 13 11 rbd., Bradley (Dec. 18, 2021) • 13 pts, 11 rbd, Clemson (Dec. 20, 2021)
had a double-double in 3 straight games.....	Faustine Aifuwa, 3 straight (Dec. 14, 2020 - Nov. 20, 2020)
had a double-double in 4 straight games.....	Ayana Mitchell, 4 straight (Feb. 28, 2019 - Nov. 5, 2019)
had a double-double in 5 straight games.....	Ayana Mitchell, 5 straight (Feb. 24, 2019 - Nov. 5, 2019)
had a double-double in 10 straight games.....	Sylvia Fowles, 19 straight (Dec. 30, 2006 - March 3, 2007)
had a triple-double.....	Khayla Pointer - 16 points, 11 rebounds, 10 assists at Ole Miss (Feb. 7, 2022)

LAST TIME

LSU HAS...

had two players record a double-double	Khayla Pointer - 16 pts., 11, rbd, 10 ast. and Faustine Aifuwa, 20 pts., 14 rbd. at Ole Miss (Feb. 7, 2022)
had no player reach double figures in scoring	#1 South Carolina (Jan. 4, 2015)
kept every player on a team out of double-figures	vs. Loyola Marymount (Dec. 20, 2020)
had all five starters score in double figures	Texas Tech, Newby, Aifuwa, Cherry, Pointer, Morris (Dec. 21, 2021)
had four starters score in double figures	Vanderbilt, Morris (20), Aifuwa (20), Pointer (17), Cherry (12) (Jan. 13, 2022)
had five players score in double figures	Texas Tech, Newby, Aifuwa, Cherry, Pointer, Morris (Dec. 21, 2021)
had six players score in double figures	SHSU - Hyder, Jackson, Louis, Hill, Norton, Neubert (Dec. 14, 2016)
had two players score at least 20 points or more	Alexis Morris, 25 and Khayla Pointer, 25 at Texas A&M (Feb. 13, 2022)
had two players score 25 or more points in a game	Alexis Morris, 25 and Khayla Pointer, 25 at Texas A&M (Feb. 13, 2022)
had two players score 28 or more points in a game	Seimone Augustus, 32, & Sylvia Fowles, 28, at Alabama (Feb. 23, 2006)
had four players score at least 20 points or more	at Alabama - Augustus, Johnson, Hodges, Hoston (Feb. 5, 2004)
played 40 minutes	Alexis Morris, Khayla Pointer and Jailin Cherry (40 of 40) at Ole Miss (Feb. 7, 2022)
played 40 minutes in 2 straight games	Alexis Morris vs. Kentucky (40 of 40) and at Ole Miss (40 of 40) (Jan. 30 - Feb. 7, 2022)
played 40 minutes in 3 straight games	Khayla Pointer, at Georgia (Dec. 30, 2021) and vs. Texas A&M (Jan. 2, 2022) and vs. South Carolina (Jan. 6, 2022)
played 40 minutes in 4 straight games	Chloe Jackson, 5 straight (Feb. 18, 2018 - March 17, 2018)
played 40 minutes in 5 straight games	Chloe Jackson, 5 straight (Feb. 18, 2018 - March 17, 2018)
played 40 minutes in 8 straight games	Temeka Johnson, 8 straight (Feb. 17, 2002 - Mar. 17, 2002)
fouled out	Autumn Newby at Ole Miss (Feb. 7, 2022)
had two freshmen in the starting lineup	Raven Farley & Khayla Pointer, vs. Saint Louis (Nov. 25, 2017)

AN LSU OPPONENT PLAYER...

scored 40 or more points	42 by Bianca Thomas of Ole Miss (Jan. 17, 2010 in Oxford)
scored 30 or more points	32 by Kierstan Bell of FGCU (Nov. 14, 2012 in Baton Rouge)
attempted 25 field goals	25 by Courtney Williams of USF (March 21, 2015 in Tampa - NCAA 1st Round)
recorded a double-double	Aliyah Boston (19 PTS, 18 RBDS) of South Carolina (Jan. 6, 2022)
had 10 or more assists	Mimi Reid (10 assists) of Ole Miss (Jan. 4, 2021 in Oxford)
had 15 or more rebounds	15 by Madison Scott of Ole Miss (Feb. 7, 2022 in Oxford)
had 20 or more rebounds	20 by Teaira McCowan of #6 Mississippi State (Jan. 31, 2019 in Baton Rouge)
made 13 or more field goals	13 by Teaira McCowan of #5 Mississippi State (Jan. 7, 2018 in Baton Rouge)
made 15 or more free throws	18 by Ashley McElhiney of #19 Vanderbilt (Feb. 15, 2001 in Nashville)

MISCELLANEOUS...

LSU scored 100 points or more	W, 100-36 vs. Alcorn St. (Dec. 15, 2021 in Baton Rouge)
an opponent scored 100 points or more	102 by Ole Miss in 3OT (Feb. 7, 2010 in Baton Rouge)
LSU scored 100 points away from home	105, vs. Eastern Washington (Nov. 25, 2006 in San Antonio)
LSU scored 100 points and lost	101, Ole Miss in 3OT (Feb. 7, 2010 in Baton Rouge)
LSU scored 50 or fewer and won	def. Texas Tech, 48-40, in Lubbock, Texas (Nov. 30, 2017)
LSU scored 50 points or less	48, UCF (Dec. 4, 2020)
LSU scored 40 points or less	35, #6 Mississippi State (Jan. 31, 2019)
an opponent scored 20 points or less	19, by Centenary (Nov. 15, 2009 in Baton Rouge)
an opponent scored 30 points or less	30, by Florida (Feb. 11, 2010 in Gainesville)
an opponent scored 40 points or less	36, by Alcorn St. (Dec. 15, 2021 in Baton Rouge)
an opponent scored 40 pts or less in consecutive games	Virginia Tech, 40 pts (Nov. 14, 2006) and Louisiana-Lafayette, 31 pts (Nov. 16, 2006)
beat a ranked team	#17 Georgia, 73-67, in Baton Rouge (Feb. 10, 2022)
beat a top-5 ranked team	at #5 Tennessee, 80-77, in Knoxville on Jan. 2, 2014
beat a ranked team at a neutral site	#15/15 Michigan State, 58-56, in Bimini, Bahamas on Nov. 29, 2019
beat a ranked team on the road	#13/12 Georgia, 68-62, in Athens on Dec. 30, 2021
beat a ranked team at home	#23 Texas A&M, 75-66, in Baton Rouge (Jan. 2, 2022)
beat a ranked team in consecutive games	at #13 Georgia, 68-62 (Dec. 30, 2021) and #23 Texas A&M, 75-66, in Baton Rouge (Jan. 2, 2022)
LSU had a +50 scoring margin	+64 (100-36), Alcorn St (Dec. 15, 2021 in Baton Rouge)
LSU had a +15 rebound margin	+18 (44-26), at Texas A&M (Feb. 13, 2022)
LSU had a +20 rebound margin	+28 (48-20), Texas Southern (Dec. 12, 2021)
an opponent had a +15 rebound margin	+24, vs. South Carolina (Jan 6, 2022)
an opponent had a +20 rebound margin	+24, vs. South Carolina (Jan 6, 2022)
LSU attempted 30 free throws	27-34 vs. Georgia (Feb. 10, 2022)
LSU attempted 35 free throws	41, Ole Miss (Jan. 31, 2021)
an opponent attempted 35 free throws	40, by Alabama (Feb. 25, 2018)
LSU made 25 free throws	27-34 vs. Georgia (Feb. 10, 2022)
LSU made 30 free throws	34, vs. McNeese State (Dec. 21, 2012 - tied school record; both school records in Fargas era)
an opponent made 30 free throws	34, by Alabama (March 2, 2014) - opponent school record
LSU made 10+ three-pointers	13, at Missouri (Jan. 16, 2014) - school record
LSU attempted 20 three-pointers	22, vs. Southeastern (Dec. 27, 2018)
an opponent made 15 three-pointers	15, Missouri (Jan. 13, 2022)
an opponent attempted 25 three-pointers	31, Missouri (Jan. 13, 2022)
LSU had 25 assists	26, vs. Texas Southern (Dec. 12, 2021)
LSU had 30 assists	32, at #18 Arkansas (Jan. 10, 2008)
LSU had 35 assists	38, vs. UNC Asheville (Nov. 23, 1999)
an opponent had 25 assists	25, by Alabama (Jan. 28, 1995)
LSU forced 25 turnovers	27, Bradley (Dec. 18, 2021)
LSU forced 30 turnovers	26, by ULL (Nov. 18, 2021)
LSU forced 35 turnovers	35, by Jackson State (Nov. 17, 2014)
LSU forced 30 turnovers in consecutive games	30, by Tulane (Dec. 11, 2016); 34, by SHSU (Dec. 14, 2016)
LSU had 15 steals	17, Alcorn St. (Dec. 15, 2021)
LSU had 20 steals	25, McNeese (Dec. 11, 2018)
LSU had 20 steals in consecutive games	21, Tulane (Dec. 11, 2016); 21, SHSU (Dec. 14, 2016)
LSU blocked 10 shots	13, at Auburn (Jan. 9, 2022)
overcame a 10-point halftime deficit to win	-12, vs. LMU, 28-16 (Dec. 20, 2020)
overcame a 15-point halftime deficit to win	-17, Oregon, 35-18 (Nov. 23, 1985)
overcame a 10-point second-half deficit to win (in back to back games) ...	Auburn, 56-43 (Dec. 31, 2020); trailed 34-21 at 7:13 in 3Q • at Ole Miss, 77-69 (Jan. 4, 2021); trailed 47-34 at 2:11 in 3Q



#0

Autumn Newby

Forward | 6-2 | Graduate Student (Vanderbilt) | Lawrenceville, Georgia

Opponent	Min	FG	3P	FT	ORB	DRB	TRB	PF	Pts.	Asst.	TO	ST	Blocks	+/-
Nicholls*	29:06	3-5	0-0	0-1	3	8	11	0	6	1	2	1	0	28
Florida Gulf Coast*	28:06	1-4	0-0	2-2	3	6	9	1	4	0	1	1	0	-8
at UL-Lafayette*	30:52	2-3	0-0	3-6	2	10	12	2	7	0	0	0	1	31
Tulane	34:40	3-5	0-0	5-6	3	6	9	1	11	2	1	2	1	14
New Mexico State	25:17	2-4	0-0	2-7	4	1	5	3	6	0	2	2	1	14
Missouri State*	36:28	2-5	0-0	2-6	2	8	10	5	6	1	2	1	0	9
Iowa State*	24:50	1-2	0-0	0-0	1	2	3	3	2	0	2	0	0	7
Texas Southern	14:15	1-3	0-0	0-2	2	5	7	3	2	0	1	1	0	17
Alcorn State*	16:30	2-3	0-0	0-0	2	1	3	2	4	3	1	0	0	30
Bradley*	24:30	2-3	0-0	0-1	2	8	10	0	4	1	0	2	0	41
Clemson*	31:29	3-4	0-0	1-1	2	0	2	1	7	0	0	1	0	7
Texas Tech*	35:14	4-10	0-0	4-4	7	5	12	3	12	0	1	1	1	11
Samford*	20:31	2-5	0-0	0-0	1	3	4	2	4	0	1	1	0	18
at Georgia*	32:01	4-6	0-0	1-2	5	5	10	2	9	1	4	2	0	7
Texas A&M*	31:38	2-2	0-0	0-0	3	7	10	2	4	1	1	1	2	10
South Carolina*	34:04	1-2	0-0	0-0	3	1	4	5	2	0	3	1	1	-2
at Auburn*	22:15	4-5	0-0	0-0	1	5	6	3	8	0	0	1	0	26
Missouri*	18:34	1-4	0-0	2-2	5	7	12	0	4	1	0	0	0	4
Vanderbilt	--	--	--	--	--	--	--	--	--	--	--	--	--	--
at Florida*	30:46	2-3	0-0	2-2	3	8	11	3	6	0	0	1	0	2
at Arkansas*	27:54	6-8	0-0	3-4	4	5	9	2	15	1	3	0	0	-3
Kentucky*	31:35	0-3	0-0	3-4	1	5	6	4	3	0	1	0	1	16
at Ole Miss*	35:20	2-7	0-0	2-4	3	3	6	5	6	0	1	0	0	1
Georgia*	34:47	1-2	0-0	1-2	2	7	9	4	3	1	2	1	0	-1
at Texas A&M*	35:27	2-6	0-0	3-4	6	7	13	3	7	2	2	0	0	15
at Mississippi State*	37:20	3-5	0-0	0-0	4	8	12	3	6	2	1	1	0	8
Florida														
Alabama														
at Tennessee														

*-Start

SEASON	TEAM	GP-GS	MIN/AVG	FG-FGA	FG%	3FG-ATT	3FG%	FT-FTA	FT%	ORB	DRB	TRB	AVG	PF-FO	A	TO	BLK	STL	PTS	AVG
2017-18	Vandy	29-29	660/22.8	57-125	.456	0-0	.000	37-78	.474	50	141	191	6.6	100-4	56	60	11	17	151	5.2
2018-19	Vandy	28-28	768/27.4	71-175	.406	0-0	.000	64-94	.681	53	135	188	6.7	89-4	37	54	5	18	206	7.4
2019-20	Vandy	27-27	715/26.5	42-101	.416	0-0	.000	41-67	.612	50	110	160	5.9	78-1	37	50	5	36	125	4.6
2020-21	Vandy	Opted Out Of Season																		
2021-22	LSU	25-22	723/28.9	56-108	.519	0-0	.000	36-60	.600	74	131	205	8.2	62-3	17	32	8	21	148	5.9
TOTAL FOR LSU		25-22	723/28.9	56-108	.519	0-0	.000	36-60	.600	74	131	205	8.2	62-3	17	32	8	21	148	5.9
TOTAL		109-106	2866/26.3	226-509	.444	0-0	.000	178-299	.595	227	517	744	6.8	329-12	147	196	29	92	630	5.8

Season Highs

Points	15 at Arkansas (1/27/22)
Rebounds	13 at Texas A&M (1/13/22)
Assists	3 vs. Alcorn St. (12/15/21)
Steals	2 four times
Blocks	1 three times
FG Made	4 vs. Texas Tech (12/21/21)
FG Attempts	10 vs. Texas Tech (12/21/21)
FT Made	5 vs. Tulane (11/23/21)
FT Attempts	6 twice

Career Highs

Points	30 vs. N. Alabama (11/6/18)
Rebounds	14 vs. Iowa St. (12/2/17)
Assists	6 vs. Tenn. Tech (12/5/19)
Steals	4 Three times
Blocks	2 Three ties
FG Made	11 vs. N. Alabama (11/6/18)
FG Attempts	17 vs. N. Alabama (11/6/18)
FT Made	9 vs. Samford (12/28/18)
FT Attempts	12 vs. Austin Peay (11/12/18)

Player Notes

- Had 12 rebounds in the first half of the Missouri game before exiting in the third quarter with an injury
- Recorded her first career double-double vs. Texas Tech
- A graduate transfer from Vanderbilt who started every game of her career there and sat out the 2020-21 season
- With 598 career rebounds, Newby ranks in the Top-10 among active players in the SEC



#1

Jailin Cherry

Guard | 5-8 | Graduate Student | Pascagoula, Mississippi

Opponent	Min	FG	3P	FT	ORB	DRB	TRB	PF	Pts.	Asst.	TO	ST	Blocks	+/-
Nicholls*	31:23	5-10	2-3	0-0	0	3	3	3	12	3	4	1	1	42
Florida Gulf Coast*	24:25	4-10	0-1	0-0	1	3	4	3	8	0	1	3	2	-11
at UL-Lafayette*	18:50	1-4	0-1	0-0	0	4	4	2	2	1	1	0	0	15
Tulane*	37:19	5-16	0-2	0-0	2	4	6	5	10	2	1	2	1	14
New Mexico State*	16:54	3-8	0-1	0-0	1	3	4	3	6	2	2	0	0	-4
Missouri State*	22:02	2-4	0-1	0-0	3	2	5	0	4	1	3	3	1	-1
Iowa State*	15:56	0-3	0-0	0-0	0	4	4	0	0	1	1	1	0	4
Texas Southern	--	--	--	--	--	--	--	--	--	--	--	--	--	--
Alcorn State	16:53	2-4	0-2	0-0	0	2	2	0	4	1	2	2	0	28
Bradley*	24:57	6-11	0-2	0-0	2	1	3	1	12	0	1	4	0	31
Clemson*	18:44	1-5	0-2	1-2	1	0	1	3	3	3	1	2	0	9
Texas Tech*	38:43	8-21	0-0	0-0	2	3	5	2	16	4	2	0	0	16
Samford*	30:37	11-22	0-2	0-0	3	4	7	0	22	1	2	2	3	35
at Georgia*	40:00	5-15	0-1	0-0	2	2	4	1	10	3	4	3	0	6
Texas A&M*	30:41	4-13	0-1	2-5	3	4	7	2	10	6	1	1	0	13
South Carolina*	40:00	4-11	0-0	0-0	2	4	6	4	8	4	0	3	1	-6
at Auburn*	31:16	2-11	0-1	3-4	0	5	5	0	7	2	2	2	2	28
Missouri*	45:00	9-19	0-2	2-2	3	4	7	3	20	9	3	0	1	2
Vanderbilt*	38:38	5-10	0-0	2-4	2	7	9	1	12	8	2	2	0	25
at Florida*	23:50	1-6	0-0	0-0	2	6	8	3 (T)	2	3	5	0	0	8
at Arkansas*	24:25	3-9	0-0	0-0	2	1	3	1	6	2	4	0	1	-20
Kentucky*	38:02	5-11	0-0	1-2	2	4	6	1	11	6	2	3	0	3
at Ole Miss*	40:00	3-9	0-0	1-2	2	6	8	3	7	1	1	2	0	4
Georgia*	38:36	9-19	0-1	0-0	1	5	6	2	18	1	3	0	0	8
at Texas A&M*	36:32	3-12	0-0	3-4	0	6	6	1	9	1	2	1	1	19
at Mississippi State*	34:22	5-13	0-0	0-0	1	7	8	2	10	2	2	1	2	4
Florida														
Alabama														
at Tennessee														

*-Start

SEASON	TEAM	GP-GS	MIN/AVG	FG-FGA	FG%	3FG-ATT	3FG%	FT-FTA	FT%	ORB	DRB	TRB	AVG	PF-FO	A	TO	BLK	STL	PTS	AVG
2017-18	LSU	22-1	184/8.4	22-70	.314	1-23	.043	2-5	.400	14	9	23	1.0	14-0	6	10	0	7	47	2.1
2018-19	LSU	27-7	369/13.7	51-148	.345	12-42	.286	7-14	.500	21	27	48	1.8	41-0	18	35	4	9	121	4.5
2019-20	LSU	30-14	595/19.8	76-181	.420	2-26	.077	20-37	.541	44	48	92	3.1	42-0	29	46	13	35	174	5.8
2020-21	LSU	22-6	364/16.5	32-90	.356	2-11	.182	12-22	.545	10	30	40	1.8	43-1	18	41	1	25	78	3.5
2021-22	LSU	25-24	758/30.3	106-276	.384	2-23	.087	15-25	.600	38	92	130	5.2	47-1	67	52	16	38	229	9.2
TOTAL		126-52	2271/18.0	287-765	.375	19-125	.152	56-103	.544	127	206	333	2.6	187-2	138	184	34	114	649	5.2

Season Highs

Points	22 vs. Samford (12/27/21)
Rebounds	9 vs. Vanderbilt (1/16/22)
Assists	9 vs. Missouri (1/13/22)
Steals	4 vs. BU (12/18/21)
Blocks	3 vs. Samford (12/27/21)
FG Made	11 vs. Samford (12/27/21)
FG Attempts	22 vs. Samford (12/27/21)
3FG Made	2 vs. Nicholls (11/9/21)
3FG Attempts	3 vs. Nicholls (11/9/21)
FT Made	3 at Auburn (1/9/22)
FG Attempts	4 at Auburn (1/9/22)

Career Highs

Points	22 vs. Samford (12/27/21)
Rebounds	10 at Arkansas (3/1/20)
Assists	9 vs. Missouri (1/13/22)
Steals	6 vs. Vanderbilt (2/27/20)
Blocks	3 vs. Samford (12/27/21)
FG Mage	11 vs. Samford (12/27/21)
FG Attempts	22 vs. Samford (12/27/21)
3FG Made	3 at MSU (2/28/19)
3FG Attempts	6 vs. Tulane (11/15/18)
FT Made	5 vs. Kentucky (1/19/20)
FG Attempts	6 Twice

Player Notes

- All 10 of her points against Texas A&M on Jan. 2 came in the fourth quarter to help LSU average a three point deficit going into the fourth quarter
 - Set career highs with 22 points and three blocks in the win over Samford.
 - One of three seniors who decided to come back for her additional year of eligibility with Khayla Pointer and Faustine Aifuwa and seen as a leader on the team
 -Went down with a left leg injury in the second quarter vs. Iowa St. She did not return to the game, but is not expected to miss significant time.



#3

Khayla Pointer

Guard | 5-7 | Graduate Student | Marietta, Georgia

Opponent	Min	FG	3P	FT	ORB	DRB	TRB	PF	Pts.	Asst.	TO	ST	Blocks	+/-
Nicholls*	36:16	7-13	1-5	1-1	3	8	11	2	16	13	2	2	0	42
Florida Gulf Coast*	40:00	9-17	1-2	4-5	1	9	10	2	23	5	6	0	0	-14
at UL-Lafayette*	35:23	3-13	1-2	2-3	3	3	6	3	9	3	3	0	0	22
Tulane*	39:39	6-15	1-4	1-2	1	3	4	1	15	6	4	1	0	17
New Mexico State*	36:04	8-19	2-4	2-3	2	3	5	2	20	1	1	0	1	23
Missouri State*	40:00	11-24	1-1	2-2	2	4	6	1	25	2	3	1	0	8
Iowa State*	40:00	9-19	1-2	1-1	1	5	6	1	20	7	0	2	0	9
Texas Southern*	22:10	4-6	1-1	4-6	1	5	6	2	13	4	3	5	0	36
Alcorn State*	20:16	7-10	2-4	3-5	2	8	10	1	19	4	0	3	0	34
Bradley*	21:52	3-10	0-2	3-7	2	1	3	1	9	0	2	1	1	26
Clemson*	37:30	6-15	0-4	8-15	1	5	6	2	20	8	6	1	0	19
Texas Tech*	36:59	8-14	1-4	2-6	2	5	7	2	19	7	1	0	0	13
Samford*	34:52	6-12	2-4	2-3	2	9	11	0	16	8	3	3	0	34
at Georgia*	40:00	7-20	4-8	3-7	0	2	2	1	21	2	2	3	0	6
Texas A&M*	40:00	6-13	4-7	1-4	0	9	9	1	17	8	2	1	0	9
South Carolina*	40:00	10-26	1-4	1-3	1	2	3	1	22	6	3	1	0	-6
at Auburn*	38:36	9-14	2-4	4-5	2	9	11	2	24	6	5	4	1	30
Missouri*	45:00	7-17	4-9	3-4	0	4	4	1	21	6	0	3	0	2
Vanderbilt*	32:28	7-10	0-2	3-4	0	7	7	2	17	7	2	4	1	29
at Florida*	40:00	11-27	1-6	12-15	0	1	1	0	35	1	4	3	1	-1
at Arkansas*	37:05	4-12	1-4	4-6	0	5	5	3	13	7	4	0	0	-15
Kentucky*	37:49	9-19	3-4	7-8	2	3	5	1	28	2	2	2	0	6
at Ole Miss*	40:00	4-17	0-1	8-11	3	8	11	2	16	10	1	3	1	4
Georgia*	38:45	4-10	1-2	12-16	0	5	5	0	21	3	3	1	0	6
at Texas A&M*	38:30	7-14	2-4	9-10	0	0	0	2	25	3	1	0	0	16
at Mississippi State*	36:31	5-10	3-6	5-6	1	3	4	0	18	4	4	0	0	15

Florida
Alabama
at Tennessee

*-Start

SEASON	TEAM	GP-GS	MIN/AVG	FG-FGA	FG%	3FG-ATT	3FG%	FT-FTA	FT%	ORB	DRB	TRB	AVG	PF-FO	A	TO	BLK	STL	PTS	AVG
2017-18	LSU	29-4	544/18.8	47-145	.324	12-39	.308	23-32	.719	14	27	41	1.4	42-0	66	43	4	26	129	4.4
2018-19	LSU	29-29	918/31.7	130-298	.436	11-33	.333	91-145	.628	20	97	117	4.0	65-2	131	106	3	48	362	12.5
2019-20	LSU	30-29	982/32.7	151-365	.414	20-70	.286	121-169	.716	18	101	119	4.0	62-0	144	83	3	62	443	14.8
2020-21	LSU	22-22	804/36.5	124-315	.394	29-87	.333	95-157	.605	23	67	90	4.1	54-0	90	92	1	55	372	16.9
2021-22	LSU	26-26	946/36.4	177-396	.447	40-100	.400	107-158	.677	32	126	158	6.1	36-0	133	68	6	46	501	19.3
TOTAL		136-110	4194/30.8	629-1519	.414	112-329	.340	437-661	.661	107	418	525	3.9	259-2	564	392	17	237	1807	13.3

Season Highs

Points 35 at Florida (1/23/22)
Rebounds 11 four time
Assists 13 vs. Nicholls (11/9/21)
Steals 5 vs. TSU (12/12/21)
Blocks 1 vs. NMSU (11/26/21)
FG Made 11 vs. Missouri St (11/26/21)
FG Attempts 24 vs. Missouri St. (11/26/21)
3FG Made 2 three times
3FG Attempts 5 vs. Nicholls (11/9/21)
FT Made 12 at Florida
FT Attempts 15 twice

Career Highs

Points 35 at Florida (1/23/22)
Rebounds 11 four times
Assists 13 vs. Nicholls (11/9/21)
Steals 5 Three times
Blocks 2 vs. TAMU (2/2/20)
FG Mage 10 Five times
FG Attempts 22 at Oklahoma (12/7/19)
3FG Made 4 vs. TAMU (3/5/21)
3FG Attempts 7 Twice
FT Made 11 Twice
FT Attempts 18 vs. Ole Miss (1/31/21)

Player Notes

- One of five players in SEC history with multiple triple-doubles. LSU is the only team with multipl players with multiple triple-doubles (Pointer and Cornelia Gayden)
- Had 19 4Q points to help guide LSU to a comeback win over Kentucky
- Became the first LSU player since Seimone Augustus in 2006 to put up 35 points in a game
- SEC Player of the Week (11/16/21)
- Has led LSU in scoring the past two seasons
- With her triple-double in the season opener, Pointer became the third player in LSU history to accomplish that feat.
- No. 4 on LSU's all-time assists list and is one of four players in program history with over 500 career assists
- Media Preseason All-SEC Team



#10

Ryan Payne

Guard | 5-7 | Junior | Los Angeles, California

Opponent	Min	FG	3P	FT	ORB	DRB	TRB	PF	Pts.	Asst.	TO	ST	Blocks	+/-
Nicholls*	22:29	4-10	2-3	0-0	0	2	2	0	10	4	2	3	0	26
Florida Gulf Coast*	17:59	3-6	0-0	0-0	1	1	2	0	6	0	1	0	0	-8
at UL-Lafayette	22:53	5-8	1-1	0-0	0	1	1	1	11	0	3	2	0	15
Tulane	2:55	0-0	0-0	0-0	0	0	0	0	0	0	0	0	0	0
New Mexico State	24:05	1-6	0-1	5-6	1	3	4	1	7	3	1	1	0	17
Missouri State	26:36	1-7	0-1	6-6	1	4	5	1	8	3	1	0	0	9
Iowa State	24:04	4-7	1-1	0-0	0	3	3	2	9	3	0	5	0	5
Texas Southern*	20:53	3-7	1-2	1-2	1	2	3	1	8	7	0	2	0	32
Alcorn State*	12:36	0-4	0-0	4-4	1	1	2	1	4	2	3	4	0	16
Bradley	17:47	4-6	0-1	2-2	0	2	2	2	10	0	1	0	0	4
Clemson	23:08	3-10	2-5	0-0	1	2	3	1	8	0	5	3	1	4
Texas Tech	14:06	2-4	0-0	0-0	0	3	3	3	4	2	1	2	0	4
Samford*	19:26	3-8	1-3	0-0	0	1	1	1	7	4	1	1	0	11
at Georgia	--	--	--	--	--	--	--	--	--	--	--	--	--	--
Texas A&M	9:19	0-5	0-1	0-2	2	2	4	0	0	2	0	0	0	-4
South Carolina	0:57	0-0	0-0	0-0	0	0	0	0	0	0	0	0	0	-1
at Auburn	6:17	0-1	0-0	0-0	0	2	2	3	0	1	0	1	0	-2
Missouri	8:45	2-3	0-0	0-0	0	2	2	0	4	1	0	1	0	-6
Vanderbilt	14:04	2-3	1-1	1-2	0	2	2	0	6	2	0	0	0	-7
at Florida	25:18	4-7	0-2	0-0	0	1	1	1	8	1	3	3	0	0
at Arkansas	18:01	3-7	0-2	3-4	0	1	1	4	9	1	2	0	0	-7
Kentucky	4:09	1-2	0-0	0-0	0	0	0	1	2	0	1	0	0	9
at Ole Miss	--	--	--	--	--	--	--	--	--	--	--	--	--	--
Georgia	3:52	0-1	0-0	0-0	0	0	0	0	0	0	2	0	0	-2
at Texas A&M	4:47	1-1	0-0	0-0	0	1	1	0	2	1	0	1	0	-1
at Mississippi State*	13:31	3-6	0-0	0-0	0	2	2	0	6	2	0	0	0	2
Florida														
Alabama														
at Tennessee														

*-Start

SEASON	TEAM	GP-GS	MIN/AVG	FG-FGA	FG%	3FG-ATT	3FG%	FT-FTA	FT%	ORB	DRB	TRB	AVG	PF-FO	A	TO	BLK	STL	PTS	AVG
2018-19	TCU	32-0	254/7.9	25-96	.260	5-25	.200	11-23	.478	9	22	31	1.0	21-0	22	30	0	17	66	2.1
2019-20	TCU	26-0	212/8.1	32-76	.421	2-10	.200	10-14	.714	3	10	13	0.5	19-0	16	13	1	20	76	2.9
2020-21	LSU	5-0	79/15.8	10-23	.435	4-6	.667	10-12	.833	4	8	12	2.4	4-0	6	10	0	1	34	6.8
2021-22	LSU	24-5	358/14.9	49-119	.412	9-24	.375	22-28	.786	8	38	46	1.9	23-0	37	29	1	29	129	5.4
TOTAL FOR LSU		29-5	437/15.1	59-142	.415	13-30	.433	32-40	.800	12	46	58	2.0	27-0	43	39	1	30	163	5.6
TOTAL		87-5	903/10.4	116-314	.369	20-65	.308	53-77	.688	24	78	102	1.2	67-0	81	82	2	67	305	3.5

Season Highs

Points	11 at ULL (11/18/21)
Rebounds	5 vs. Missouri St. (11/27/21)
Assists	vs. TSU (12/12/21)
Steals	5 vs. No. 14 Iowa St. (12/2/21)
Blocks	--
FG Made	5 at ULL (11/18/21)
FG Attempts	10 vs. Nicholls (11/9/21)
3FG Made	2 vs. Nicholls (11/9/21)
3FG Attempts	3 vs. Nicholls (11/9/21)
FT Made	6 vs. Missouri St. (11/27/21)
FT Attempts	6 vs. Missouri St. (11/27/21)

Career Highs

Points	17 vs. MSU (3/4/21)
Rebounds	5 vs. Missouri St. (11/27/21)
Assists	7 vs. TSU (12/12/21)
Steals	5 twice
Blocks	1 at Kansas (2/8/20)
FG Made	5 Four times
FG Attempts	12 vs. Alcorn St. (12/29/18)
3FG Made	2 Twice
3FG Attempts	3 Twice
FT Made	5 vs. MSU (3/4/21)
FT Attempts	6 Twice

Player Notes

-Stepped in when Jailin Cherry went down against No. 14 Iowa State, tying a career-high with five steals and sinking her lone three in a clutch time in the third quarter to maintain the lead.
 - Earned her first career start in the season opener vs. Nicholls and went for 10 points
 - Despite the stats not clearly showing it, Payne's defensive pressure on the ball has been critical in forcing opponent turnovers



#11

Emily Ward

Guard | 5-11 | Sophomore | Bossier City, Louisiana

Opponent	Min	FG	3P	FT	ORB	DRB	TRB	PF	Pts.	Asst.	TO	ST	Blocks	+/-
Nicholls	3:48	1-1	0-0	0-0	0	0	0	0	2	0	1	0	0	1
Florida Gulf Coast	--	--	--	--	--	--	--	--	--	--	--	--	--	--
at UL-Lafayette	2:36	0-0	0-0	0-0	0	1	1	0	0	0	0	0	0	1
Tulane	--	--	--	--	--	--	--	--	--	--	--	--	--	--
New Mexico State	--	--	--	--	--	--	--	--	--	--	--	--	--	--
Missouri State	--	--	--	--	--	--	--	--	--	--	--	--	--	--
Iowa State	--	--	--	--	--	--	--	--	--	--	--	--	--	--
Texas Southern	12:15	1-3	0-0	0-0	1	0	1	0	2	0	0	0	1	1
Alcorn St.	12:38	3-3	0-0	0-0	1	0	1	1	6	0	1	1	0	23
Bradley	5:46	1-4	0-0	0-0	1	1	2	1	2	0	0	1	0	-14
Clemson	--	--	--	--	--	--	--	--	--	--	--	--	--	--
Texas Tech	--	--	--	--	--	--	--	--	--	--	--	--	--	--
Samford	4:01	0-0	0-0	0-0	0	1	1	0	0	1	0	0	0	0
at Georgia	--	--	--	--	--	--	--	--	--	--	--	--	--	--
Texas A&M	--	--	--	--	--	--	--	--	--	--	--	--	--	--
South Carolina	--	--	--	--	--	--	--	--	--	--	--	--	--	--
at Auburn	--	--	--	--	--	--	--	--	--	--	--	--	--	--
Missouri	--	--	--	--	--	--	--	--	--	--	--	--	--	--
Vanderbilt	--	--	--	--	--	--	--	--	--	--	--	--	--	--
at Florida	--	--	--	--	--	--	--	--	--	--	--	--	--	--
at Arkansas	--	--	--	--	--	--	--	--	--	--	--	--	--	--
Kentucky	--	--	--	--	--	--	--	--	--	--	--	--	--	--
at Ole Miss	--	--	--	--	--	--	--	--	--	--	--	--	--	--
Georgia	--	--	--	--	--	--	--	--	--	--	--	--	--	--
at Texas A&M	--	--	--	--	--	--	--	--	--	--	--	--	--	--
at Mississippi State	--	--	--	--	--	--	--	--	--	--	--	--	--	--
Florida	--	--	--	--	--	--	--	--	--	--	--	--	--	--
Alabama	--	--	--	--	--	--	--	--	--	--	--	--	--	--
at Tennessee	--	--	--	--	--	--	--	--	--	--	--	--	--	--

*-Start

SEASON	TEAM	GP-GS	MIN/AVG	FG-FGA	FG%	3FG-ATT	3FG%	FT-FTA	FT%	ORB	DRB	TRB	AVG	PF-FO	A	TO	BLK	STL	PTS	AVG
2019-20	LSU	5-0	9/1.8	2-3	.667	0-0	.000	2-4	.500	1	0	1	0.2	1-0	1	1	0	0	6	1.2
2020-21	LSU	1-0	1/1.2	0-0	.000	0-0	.000	0-0	.000	0	0	0	0.0	0-0	0	0	0	0	0	0.0
2021-22	LSU	6-0	40/6.7	6-11	.545	0-0	.000	0-0	.000	3	3	6	1.0	2-0	1	2	1	2	12	2.0
TOTAL		12-0	50/4.2	8-14	.571	0-0	.000	2-4	.500	4	3	7	0.6	3-0	2	3	1	2	18	1.5

Season Highs

Points	6 vs. Alcorn St. (12/15/21)
Rebounds	1 three times
Assists	--
Steals	q vs. Alcorn St. (12/15/21)
Blocks	1 vs. TSU (12/12/21)
FG Made	3 vs. Alcorn St. (12/15/21)
FG Attempts	3 vs. Alcorn St. (12/15/21)
FT Made	--
FT Attempts	--

Career Highs

Points	6 vs. Alcorn St. (12/15/21)
Rebounds	1 three times
Assists	1 vs. Fla. A&M (12/28/19)
Steals	vs. Alcorn St. (12/15/21)
Blocks	1 vs. TSU (12/12/21)
FG Mage	3 vs. Alcorn St. (12/15/21)
FG Attempts	3 vs. Alcorn St. (12/15/21)
FT Made	2 vs. UNO (11/5/19)
FG Attempts	4 vs. UNO (11/5/19)

Player Notes



#13

Logyn McNeil

Forward | 6-3 | Freshman | Rockwall, Texas

Opponent	Min	FG	3P	FT	ORB	DRB	TRB	PF	Pts.	Asst.	TO	ST	Blocks	+/-
Nicholls	--	--	--	--	--	--	--	--	--	--	--	--	--	--
Florida Gulf Coast	--	--	--	--	--	--	--	--	--	--	--	--	--	--
at UL-Lafayette	--	--	--	--	--	--	--	--	--	--	--	--	--	--
Tulane	--	--	--	--	--	--	--	--	--	--	--	--	--	--
New Mexico State	--	--	--	--	--	--	--	--	--	--	--	--	--	--
Missouri State	--	--	--	--	--	--	--	--	--	--	--	--	--	--
Iowa State	--	--	--	--	--	--	--	--	--	--	--	--	--	--
Texas Southern	--	--	--	--	--	--	--	--	--	--	--	--	--	--
Alcorn State	--	--	--	--	--	--	--	--	--	--	--	--	--	--
Bradley	--	--	--	--	--	--	--	--	--	--	--	--	--	--
Clemson	--	--	--	--	--	--	--	--	--	--	--	--	--	--
Texas Tech	--	--	--	--	--	--	--	--	--	--	--	--	--	--
Samford	--	--	--	--	--	--	--	--	--	--	--	--	--	--
at Georgia	--	--	--	--	--	--	--	--	--	--	--	--	--	--
Texas A&M	--	--	--	--	--	--	--	--	--	--	--	--	--	--
South Carolina	--	--	--	--	--	--	--	--	--	--	--	--	--	--
at Auburn	--	--	--	--	--	--	--	--	--	--	--	--	--	--
Missouri	--	--	--	--	--	--	--	--	--	--	--	--	--	--
Vanderbilt	--	--	--	--	--	--	--	--	--	--	--	--	--	--
at Florida	--	--	--	--	--	--	--	--	--	--	--	--	--	--
at Arkansas	--	--	--	--	--	--	--	--	--	--	--	--	--	--
Kentucky	--	--	--	--	--	--	--	--	--	--	--	--	--	--
at Ole Miss	--	--	--	--	--	--	--	--	--	--	--	--	--	--
Georgia	--	--	--	--	--	--	--	--	--	--	--	--	--	--
at Texas A&M	--	--	--	--	--	--	--	--	--	--	--	--	--	--
at Mississippi State	--	--	--	--	--	--	--	--	--	--	--	--	--	--
Florida	--	--	--	--	--	--	--	--	--	--	--	--	--	--
Alabama	--	--	--	--	--	--	--	--	--	--	--	--	--	--
at Tennessee	--	--	--	--	--	--	--	--	--	--	--	--	--	--

*-Start

SEASON	TEAM	GP-GS	MIN/AVG	FG-FGA	FG%	3FG-ATT	3FG%	FT-FTA	FT%	ORB	DRB	TRB	AVG	PF-FO	A	TO	BLK	STL	PTS	AVG	
2021-22	LSU	0-0	0/0	0-0	.000	0-0	.000	0-0	.000	0	0	0	0.0	0-0	0	0	0	0	0	0	0.0
TOTAL		0-0	0/0	0-0	.000	0-0	.000	0-0	.000	0	0	0	0.0	0-0	0	0	0	0	0	0	0.0

Season Highs

Points	--
Rebounds	--
Assists	--
Steals	--
Blocks	--
FG Made	--
FG Attempts	--
FT Made	--
FG Attempts	--

Career Highs

Points	--
Rebounds	--
Assists	--
Steals	--
Blocks	--
FG Made	--
FG Attempts	--
FT Made	--
FG Attempts	--

Player Notes

- Tore her ACL during preseason practice and will miss the season



#14

Sarah Shematsi

Guard/Forward | 6-2 | Junior | Annecy, France

Opponent	Min	FG	3P	FT	ORB	DRB	TRB	PF	Pts.	Asst.	TO	ST	Blocks	+/-
Nicholls	5:42	2-2	1-1	0-0	0	0	0	2	5	1	0	0	0	11
Florida Gulf Coast	--	--	--	--	--	--	--	--	--	--	--	--	--	--
at UL-Lafayette	3:59	0-2	0-2	0-0	0	1	1	1	0	0	0	1	0	2
Tulane	0:21	0-0	0-0	0-0	0	0	0	0	0	0	0	0	0	0
New Mexico State	4:51	0-0	0-0	0-2	0	0	0	0	0	0	0	0	0	-2
Missouri State	--	--	--	--	--	--	--	--	--	--	--	--	--	--
Iowa State	--	--	--	--	--	--	--	--	--	--	--	--	--	--
Texas Southern	11:14	1-4	0-0	0-0	0	3	3	2	2	3	1	1	0	4
Alcorn State	13:41	2-4	2-4	1-2	0	5	5	1	7	0	0	0	0	23
Bradley	14:02	0-2	0-2	0-0	1	7	8	1	0	0	2	1	0	3
Clemson	0:28	0-2	0-2	0-0	0	0	0	0	0	0	0	0	0	0
Texas Tech	3:07	0-0	0-0	0-0	0	1	1	0	0	0	0	0	0	5
Samford	9:03	1-4	0-3	0-0	0	2	2	1	2	1	0	0	0	7
at Georgia	--	--	--	--	--	--	--	--	--	--	--	--	--	--
Texas A&M	--	--	--	--	--	--	--	--	--	--	--	--	--	--
South Carolina	--	--	--	--	--	--	--	--	--	--	--	--	--	--
at Auburn	5:13	1-4	0-1	0-0	1	0	1	1	2	0	0	0	0	-2
Missouri	--	--	--	--	--	--	--	--	--	--	--	--	--	--
Vanderbilt	9:29	1-3	1-2	0-0	0	1	1	0	3	0	1	1	1	1
at Florida	--	--	--	--	--	--	--	--	--	--	--	--	--	--
at Arkansas	7:47	0-2	0-1	0-0	0	1	1	2	0	0	0	0	0	8
Kentucky	--	--	--	--	--	--	--	--	--	--	--	--	--	--
at Ole Miss	--	--	--	--	--	--	--	--	--	--	--	--	--	--
Georgia	--	--	--	--	--	--	--	--	--	--	--	--	--	--
at Texas A&M	0:11	0-0	0-0	0-0	0	0	0	0	0	0	0	0	0	0
at Mississippi State	--	--	--	--	--	--	--	--	--	--	--	--	--	--
Florida	--	--	--	--	--	--	--	--	--	--	--	--	--	--
Alabama	--	--	--	--	--	--	--	--	--	--	--	--	--	--
at Tennessee	--	--	--	--	--	--	--	--	--	--	--	--	--	--

*-Start

SEASON	TEAM	GP-GS	MIN/AVG	FG-FGA	FG%	3FG-ATT	3FG%	FT-FTA	FT%	ORB	DRB	TRB	AVG	PF-FO	A	TO	BLK	STL	PTS	AVG
2020-21	LSU	19-2	209/11.0	20-70	.286	16-49	.327	1-2	.500	5	13	18	0.9	17-0	4	10	1	12	57	3.0
2021-22	LSU	14-0	89/6.4	8-29	.276	4-18	.222	1-4	.250	2	21	23	1.6	11-0	5	5	1	4	21	1.5
TOTAL		33-2	298/9.0	28-99	.283	20-67	.299	2-6	.333	7	34	41	1.2	28-0	9	15	2	16	78	2.4

Season Highs

Points	7 vs. Alcorn St. (12/15/21)
Rebounds	8 vs. BU (12/18/21)
Assists	3 vs. TSU (12/12/21)
Steals	1 twice
Blocks	--
FG Made	2 twice
FG Attempts	4 vs. Alcorn St. (12/15/21)
3FG Made	2 vs. Alcorn St. (12/15/21)
FG Attempts	4 vs. Alcorn St. (12/15/21)
FT Made	1 vs. Alcorn St. (12/15/21)
FG Attempts	2 vs. Alcorn St. (12/15/21)

Career Highs

Points	15 vs. UCF (12/4/20)
Rebounds	8 vs. BU (12/18/21)
Assists	3 twice
Steals	2 Twice
Blocks	1 vs. Arkansas (2/21/21)
FG Mage	5 vs. UCF (12/4/20)
FG Attempts	12 vs. Arkansas (2/21/21)
3FG Made	5 vs. UCF (12/4/20)
3FG Attempts	8 vs. Arkansas (2/21/21)
FT Made	1 twice
FG Attempts	2 twice

Player Notes

- One of two players on LSU's roster from France



#15

Ajae Petty

Forward | 6-3 | Freshman | Baltimore, Maryland

Opponent	Min	FG	3P	FT	ORB	DRB	TRB	PF	Pts.	Asst.	TO	ST	Blocks	+/-
Nicholls	6:14	0-0	0-0	1-2	1	1	2	1	1	0	0	0	1	4
Florida Gulf Coast	--	--	--	--	--	--	--	--	--	--	--	--	--	--
at UL-Lafayette	3:49	1-3	0-0	0-0	1	2	3	0	2	0	0	0	0	2
Tulane	0:21	0-0	0-0	0-0	0	0	0	0	0	0	0	0	0	0
New Mexico State	2:38	0-0	0-0	0-0	0	1	1	0	0	0	0	0	0	0
Missouri State	--	--	--	--	--	--	--	--	--	--	--	--	--	--
Iowa State	--	--	--	--	--	--	--	--	--	--	--	--	--	--
Texas Southern	13:50	1-2	0-0	3-4	1	4	6	1	5	0	1	1	1	1
Alcorn State	9:02	1-2	0-0	4-8	1	2	3	0	6	0	1	0	0	14
Badley	6:50	0-2	0-0	1-2	1	1	2	1	1	0	1	1	1	-3
Clemson	--	--	--	--	--	--	--	--	--	--	--	--	--	--
Texas Tech	--	--	--	--	--	--	--	--	--	--	--	--	--	--
Samford	13:11	5-6	0-0	2-5	2	3	5	1	12	1	0	0	1	8
at Georgia	--	--	--	--	--	--	--	--	--	--	--	--	--	--
Texas A&M	--	--	--	--	--	--	--	--	--	--	--	--	--	--
South Carolina	3:35	0-0	0-0	0-0	0	2	2	1	0	0	0	0	0	1
at Auburn	6:40	1-1	0-0	0-0	1	4	5	1	2	0	1	0	0	-3
Missouri	--	--	--	--	--	--	--	--	--	--	--	--	--	--
Vanderbilt	--	--	--	--	--	--	--	--	--	--	--	--	--	--
at Florida	--	--	--	--	--	--	--	--	--	--	--	--	--	--
at Arkansas	--	--	--	--	--	--	--	--	--	--	--	--	--	--
Kentucky	--	--	--	--	--	--	--	--	--	--	--	--	--	--
at Ole Miss	--	--	--	--	--	--	--	--	--	--	--	--	--	--
Georgia	--	--	--	--	--	--	--	--	--	--	--	--	--	--
at Texas A&M	--	--	--	--	--	--	--	--	--	--	--	--	--	--
at Mississippi State	--	--	--	--	--	--	--	--	--	--	--	--	--	--
Florida	--	--	--	--	--	--	--	--	--	--	--	--	--	--
Alabama	--	--	--	--	--	--	--	--	--	--	--	--	--	--
at Tennessee	--	--	--	--	--	--	--	--	--	--	--	--	--	--

*-Start

SEASON	TEAM	GP-GS	MIN/AVG	FG-FGA	FG%	3FG-ATT	3FG%	FT-FTA	FT%	ORB	DRB	TRB	AVG	PF-FO	A	TO	BLK	STL	PTS	AVG
2020-21	LSU	19-0	96/5.1	8-17	.471	0-0	.000	1-3	.333	8	10	18	0.9	11-0	1	7	2	0	17	0.9
2021-22	LSU	10-0	66/6.6	9-16	.563	0-0	.000	11-21	.524	8	21	29	2.9	6-0	1	4	4	2	29	2.9
TOTAL		29-0	162/5.6	17-33	.515	0-0	.000	12-24	.500	16	31	47	1.6	17-0	2	11	6	2	46	1.6

Season Highs

Points 12 vs. Samford (12/27/21)
 Rebounds 6 vs. TSU (12/12/21)
 Assists 1 vs. Samford (12/27/21)
 Steals 1 twice
 Blocks 1 four times
 FG Made 5 vs. Samford (12/27/21)
 FG Attempts 6 vs. Samford (12/27/21)
 FT Made 4 vs. Alcorn St. (12/15/21)
 FG Attempts 8 vs. Alcorn St. (12/15/21)

Career Highs

Points 12 vs. Samford (12/27/21)
 Rebounds 6 vs. TSU (12/12/21)
 Assists 1 twice
 Blocks 2 vs. Auburn (12/31/20)
 FG Made 5 vs. Samford (12/27/21)
 FG Attempts 6 vs. Samford (12/27/21)
 FT Made 4 vs. Alcorn St. (12/15/21)
 FT Attempts 8 vs. Alcorn St. (12/15/21)

Player Notes

- Set a career high with 12 points on 5-6 shooting in the win over Samford



#20

Hannah Gusters

Center | 6-5 | Freshman | Dallas, Texas

Opponent	Min	FG	3P	FT	ORB	DRB	TRB	PF	Pts.	Asst.	TO	ST	Blocks	+/-
Nicholls*	24:26	9-14	0-0	1-2	1	5	6	0	19	0	0	1	3	38
Florida Gulf Coast*	17:33	3-6	0-0	1-3	1	0	1	2	7	2	2	0	0	-12
at UL-Lafayette	12:28	2-6	0-0	3-3	2	1	3	2	7	0	3	1	0	2
Tulane	7:42	2-4	0-0	0-0	1	0	1	3	4	0	1	0	1	15
New Mexico State*	16:25	2-5	0-0	2-2	2	3	5	2	6	0	1	0	2	-2
Missouri State	30:28	2-5	0-0	2-4	0	1	1	3	6	1	1	1	2	12
Iowa State	31:07	3-7	0-0	1-2	2	3	5	3	7	1	1	0	1	7
Texas Southern	14:59	4-5	0-0	1-2	2	1	3	0	9	1	1	0	1	22
Alcorn State	--	--	--	--	--	--	--	--	--	--	--	--	--	--
Bradley	--	--	--	--	--	--	--	--	--	--	--	--	--	--
Clemson--	--	--	--	--	--	--	--	--	--	--	--	--	--	--
Texas Tech	--	--	--	--	--	--	--	--	--	--	--	--	--	--
Samford	19:28	0-5	0-0	0-0	2	5	7	1	0	1	1	1	1	20
at Georgia	10:03	1-1	0-0	1-2	0	2	2	0	3	0	0	0	0	-3
Texas A&M	16:49	1-4	0-0	0-0	1	2	3	0	2	1	2	0	1	-8
South Carolina	6:24	1-2	0-0	0-0	0	1	1	2	2	0	0	0	0	-5
at Auburn	18:26	2-9	0-0	7-8	2	2	4	1	13	0	2	0	0	4
Missouri	25:41	3-3	0-0	0-0	1	3	4	4	6	1	3	0	2	0
Vanderbilt	13:57	0-3	0-0	0-0	0	2	2	2	0	1	1	0	0	-17
at Florida	8:55	2-3	0-0	0-0	0	4	4	1	4	0	1	0	1	-6
at Arkansas	8:47	1-3	0-0	0-0	1	0	1	0	2	0	0	0	1	-14
Kentucky	--	--	--	--	--	--	--	--	--	--	--	--	--	--
at Ole Miss	2:21	1-2	0-0	0-0	1	0	1	0	2	0	2	0	0	2
Georgia	12:51	1-3	0-0	0-0	2	4	6	1	2	0	1	0	1	11
at Texas A&M	8:16	0-1	0-0	0-0	0	1	1	1	0	0	0	0	0	-5
at Mississippi State	6:20	0-0	0-0	0-0	0	2	2	1	0	2	1	0	0	1
Florida														
Alabama														
at Tennessee														

*-Start

SEASON	TEAM	GP-GS	MIN/AVG	FG-FGA	FG%	3FG-ATT	3FG%	FT-FTA	FT%	ORB	DRB	TRB	AVG	PF-FO	A	TO	BLK	STL	PTS	AVG
2020-21	Baylor	30-0	308/10.3	66-104	.635	0-0	.000	17-27	.630	25	36	61	2.0	40-0	5	26	10	4	149	5.0
2021-22	LSU	21-3	313/14.9	41-91	.451	0-0	.000	19-28	.679	21	42	63	3.0	29-0	11	24	17	4	101	4.8
TOTAL FOR LSU		21-3	313/14.9	41-91	.451	0-0	.000	19-28	.679	21	42	63	3.0	29-0	11	24	17	4	101	4.8
TOTAL		51-3	621/12.2	107-195	.549	0-0	.000	36-55	.655	46	78	124	2.4	69-0	16	50	27	8	250	4.9

Season Highs

Points 19 vs. Nicholls (11/9/21)
 Rebounds 6 vs. Nicholls (11/9/21)
 Assists 2 vs. FGCU (11/14/21)
 Steals 1 three times
 Blocks 3 vs. Nicholls (11/9/21)
 FG Made 9 vs. Nicholls (11/9/21)
 FG Attempts 14 vs. Nicholls (11/9/21)
 FT Made 3 at ULL (11/18/21)
 FG Attempts 4 vs. Missouri St. (11/27/21)

Career Highs

Points 22 vs. NWST (12/18/20)
 Rebounds 10 at Kansas (3/6/21)
 Assists 1 Five times
 Steals 1 Four times
 Blocks 3 vs. Texas Tech (12/14/20)
 FG Made 11 vs. NWST (12/18/20)
 FG Attempts 14 vs. NWST (12/18/20)
 FT Made 5 vs. McNeese (12/19/20)
 FT Attempts 6 vs. Kansas St. (2/27/21)

Player Notes

- Transferred to LSU from Baylor to follow Coach Mulkey, becoming her first official commitment after taking the LSU job.
 - Preseason Lisa Leslie Award Watchlist
 - Recorded a game-high 19 points in her LSU debut against Nicholls



#21

Timia Ware

Guard | 5-6 | Freshman | Chicago, Illinois

Opponent	Min	FG	3P	FT	ORB	DRB	TRB	PF	Pts.	Asst.	TO	ST	Blocks	+/-
Nicholls	12:09	0-3	0-2	1-2	0	2	2	2	1	0	2	1	0	2
Florida Gulf Coast	--	--	--	--	--	--	--	--	--	--	--	--	--	--
at UL-Lafayette	4:37	2-3	0-0	0-2	0	1	1	2	4	0	3	2	0	2
Tulane	0:21	0-0	0-0	0-0	0	0	0	0	0	0	0	0	0	0
New Mexico State	4:54	0-0	0-0	0-0	0	0	0	1	0	0	1	1	0	-1
Missouri State	--	--	--	--	--	--	--	--	--	--	--	--	--	--
Iowa State	--	--	--	--	--	--	--	--	--	--	--	--	--	--
Texas Southern	23:07	4-6	1-2	0-0	1	3	4	1	9	5	6	0	1	13
Alcorn State	19:44	5-10	0-2	1-2	1	1	2	1	11	3	1	2	0	30
Bradley	16:18	0-3	0-0	0-2	0	2	2	2	8	0	1	0	0	16
Clemson	1:38	0-0	0-0	0-0	0	0	0	0	0	0	0	0	0	-5
Texas Tech	3:07	0-1	0-1	0-0	0	0	0	0	0	0	0	0	0	5
Samford	22:30	3-7	1	1-2	2	4	6	1	8	2	2	0	0	21
at Georgia	--	--	--	--	--	--	--	--	--	--	--	--	--	--
Texas A&M	2:37	0-1	0-1	0-0	0	0	0	0	0	0	0	0	0	-1
South Carolina	--	--	--	--	--	--	--	--	--	--	--	--	--	--
at Auburn	7:12	0-1	0-0	0-0	1	1	2	0	0	1	1	0	0	2
Missouri	--	--	--	--	--	--	--	--	--	--	--	--	--	--
Vanderbilt	4:16	0-1	0-1	0-0	0	0	0	0	0	0	0	0	0	-10
at Florida	--	--	--	--	--	--	--	--	--	--	--	--	--	--
at Arkansas	8:42	1-2	0-1	0-0	1	0	1	2	2	0	0	0	0	6
Kentucky	--	--	--	--	--	--	--	--	--	--	--	--	--	--
at Ole Miss	--	--	--	--	--	--	--	--	--	--	--	--	--	--
Georgia	--	--	--	--	--	--	--	--	--	--	--	--	--	--
at Texas A&M	0:11	0-0	0-0	0-0	0	0	0	0	0	0	0	0	0	0
at Mississippi State	--	--	--	--	--	--	--	--	--	--	--	--	--	--
Florida														
Alabama														
at Tennessee														

*-Start

SEASON	TEAM	GP-GS	MIN/AVG	FG-FGA	FG%	3FG-ATT	3FG%	FT-FTA	FT%	ORB	DRB	TRB	AVG	PF-FO	A	TO	BLK	STL	PTS	AVG
2021-22	LSU	15-0	131/8.8	15-38	.395	2-11	.182	3-10	.300	6	14	20	1.3	12-0	12	20	1	7	35	2.3
TOTAL		15-0	131/8.8	15-38	.395	2-11	.182	3-10	.300	6	14	20	1.3	12-0	12	20	1	7	35	2.3

Season Highs

Points 11 vs. Alcorn St. (12/15/21)
 Rebounds 6 vs. Samford (12/27/21)
 Assists 5 vs. TSU (12/12/21)
 Steals 2 twice
 Blocks 1 vs. TSU (12/12/21)
 FG Made 5 vs. Alcorn St. (12/15/21)
 FG Attempts 10 vs. Alcorn St. (12/15/21)
 FT Made 1 three times
 FG Attempts 2 four times

Career Highs

Points 11 vs. Alcorn St. (12/15/21)
 Rebounds 6 vs. Samford (12/27/21)
 Assists 5 vs. TSU (12/12/21)
 Steals 2 twice
 Blocks 1 vs. TSU (12/12/21)
 FG Made 5 vs. Alcorn St. (12/15/21)
 FG Attempts 10 vs. Alcorn St. (12/15/21)
 FT Made 1 three times
 FG Attempts 2 four times

Player Notes



#23

Amani Bartlett

Forward | 6-3 | Freshman | Cleveland, Texas

Opponent	Min	FG	3P	FT	ORB	DRB	TRB	PF	Pts.	Asst.	TO	ST	Blocks	+/-
Nicholls	3:17	0-0	0-0	0-0	0	0	0	0	0	0	0	0	0	0
Florida Gulf Coast	--	--	--	--	--	--	--	--	--	--	--	--	--	--
at UL-Lafayette	1:36	0-0	0-0	0-0	0	0	0	0	0	0	0	0	0	1
Tulane	0:21	0-0	0-0	0-0	0	0	0	0	0	0	0	0	0	0
New Mexico State	1:05	0-0	0-0	0-0	0	1	1	0	0	0	0	0	0	0
Missouri State	--	--	--	--	--	--	--	--	--	--	--	--	--	--
Iowa State	--	--	--	--	--	--	--	--	--	--	--	--	--	--
Texas Southern	13:50	3-4	0-0	2-2	1	0	1	1	8	0	0	1	1	1
Alcorn State	12:23	1-1	0-0	0-0	1	0	1	1	2	0	1	1	0	12
Bradley	4:09	0-1	0-0	0-0	1	0	1	0	0	0	1	0	0	-5
Clemson	--	--	--	--	--	--	--	--	--	--	--	--	--	--
Texas Tech	--	--	--	--	--	--	--	--	--	--	--	--	--	--
Samford	--	--	--	--	--	--	--	--	--	--	--	--	--	--
at Georgia	--	--	--	--	--	--	--	--	--	--	--	--	--	--
Texas A&M	--	--	--	--	--	--	--	--	--	--	--	--	--	--
South Carolina	--	--	--	--	--	--	--	--	--	--	--	--	--	--
at Auburn	5:13	0-1	0-0	1-2	1	2	3		1	1	1	0	4	-2
Missouri	--	--	--	--	--	--	--	--	--	--	--	--	--	--
Vanderbilt	2:49	0-0	0-0	0-0	0	0	0	0	0	0	0	0	0	-6
at Florida	--	--	--	--	--	--	--	--	--	--	--	--	--	--
at Arkansas	--	--	--	--	--	--	--	--	--	--	--	--	--	--
Kentucky	--	--	--	--	--	--	--	--	--	--	--	--	--	--
at Ole Miss	--	--	--	--	--	--	--	--	--	--	--	--	--	--
Georgia	--	--	--	--	--	--	--	--	--	--	--	--	--	--
at Texas A&M	--	--	--	--	--	--	--	--	--	--	--	--	--	--
at Mississippi State	--	--	--	--	--	--	--	--	--	--	--	--	--	--
Florida	--	--	--	--	--	--	--	--	--	--	--	--	--	--
Alabama	--	--	--	--	--	--	--	--	--	--	--	--	--	--
at Tennessee	--	--	--	--	--	--	--	--	--	--	--	--	--	--

*-Start

SEASON	TEAM	GP-GS	MIN/AVG	FG-FGA	FG%	3FG-ATT	3FG%	FT-FTA	FT%	ORB	DRB	TRB	AVG	PF-FO	A	TO	BLK	STL	PTS	AVG
2021-22	LSU	9-0	45/5.0	4-7	.571	0-0	.000	3-4	.750	4	3	7	0.8	4-0	1	2	5	1	11	1.2
TOTAL		9-0	45/5.0	4-7	.571	0-0	.000	3-4	.750	4	3	7	0.8	4-0	1	2	5	1	11	1.2

Season Highs

Points	8 vs. TSU (12/12/21)
Rebounds	1 three times
Assists	--
Steals	1 twice
Blocks	4 at Auburn (1/9/22)
FG Made	3 vs. TSU (12/12/21)
FG Attempts	4 vs. TSU (12/12/21)
FT Made	2 vs. TSU (12/12/21)
FG Attempts	2 vs. TSU (12/12/21)

Career Highs

Points	8 vs. TSU (12/12/21)
Rebounds	1 twice
Assists	--
Steals	1 twice
Blocks	4 at Auburn (1/9/22)
FG Made	3 vs. TSU (12/12/21)
FG Attempts	4 vs. TSU (12/12/21)
FT Made	2 vs. TSU (12/12/21)
FG Attempts	2 vs. TSU (12/12/21)

Player Notes



#24

Faustine Aifuwa

Center | 6-5 | Graduate Student | Dacula, Georgia

Opponent	Min	FG	3P	FT	ORB	DRB	TRB	PF	Pts.	Asst.	TO	ST	Blocks	+/-
Nicholls	16:14	3-7	0-0	2-5	2	2	4	1	8	0	1	2	0	12
Florida Gulf Coast	14:12	4-12	0-0	2-3	2	4	6	0	10	0	0	0	0	-5
at UL-Lafayette*	7:55	0-3	0-0	1-2	2	3	5	2	1	0	2	0	0	-5
Tulane*	27:02	8-10	0-0	1-4	6	2	8	3	17	1	1	0	3	4
New Mexico State	21:51	3-11	0-0	2-2	3	5	8	2	8	0	1	0	2	20
Missouri State*	8:41	2-5	0-0	0-0	0	0	0	4	4	0	1	1	0	0
Iowa State*	16:49	2-5	0-0	2-2	1	3	4	1	6	0	1	0	0	2
Texas Southern*	11:55	7-9	0-0	0-1	2	3	5	1	14	0	0	0	1	23
Alcorn State*	18:08	2-3	0-0	1-2	1	2	3	1	5	1	2	0	0	27
Bradley*	17:40	7-10	0-0	0-2	9	2	11	2	14	2	1	0	0	24
Clemson*	27:34	4-8	0-0	5-10	3	8	11	5	13	0	0	1	2	9
Texas Tech*	24:46	5-9	0-0	0-0	5	3	8	2	10	0	3	0	2	12
Samford*	22:20	2-5	0-0	5-6	5	1	6	4	9	2	1	1	1	26
at Georgia*	37:28	8-11	0-0	1-2	2	7	9	2	17	3	1	1	2	8
Texas A&M*	19:58	3-6	0-0	2-2	2	2	4	5	8	0	1	0	2	17
South Carolina*	29:48	5-7	0-0	2-4	2	2	4	5	12	0	2	1	1	1
at Auburn*	22:15	5-9	0-0	0-0	2	3	5	3	10	0	2	0	4	32
Missouri*	30:08	7-13	0-0	1-1	5	1	6	4	15	0	1	0	2	13
Vanderbilt*	29:00	10-12	0-0	0-1	3	4	7	3	20	2	3	1	1	25
at Florida*	25:44	3-5	0-0	0-0	1	4	5	2	6	2	3	0	1	2
at Arkansas*	22:06	3-6	0-0	0-1	2	5	7	3	6	0	2	0	1	-15
Kentucky*	38:58	5-12	0-0	4-6	4	4	8	2	14	1	0	1	2	9
at Ole Miss*	37:57	9-19	0-0	2-3	5	9	14	3	20	0	2	1	0	2
Georgia*	18:38	0-2	0-0	1-2	2	3	5	4	1	0	1	1	0	-2
at Texas A&M*	32:33	2-8	0-0	2-2	2	6	8	2	6	0	3	2	4	23
at Mississippi State*	25:12	2-8	0-0	2-2	2	10	12	3	6	0	2	0	2	-2
Florida														
Alabama														
at Tennessee														

*-Start

SEASON	TEAM	GP-GS	MIN/AVG	FG-FGA	FG%	3FG-ATT	3FG%	FT-FTA	FT%	ORB	DRB	TRB	AVG	PF-FO	A	TO	BLK	STL	PTS	AVG	
2017-18	LSU	28-15	503/18.0	60-137	.438	0-0	.000	24-46	.522	54	86	140	5.0	85-4	10	50	44	7	1	44	5.1
2018-19	LSU	29-28	796/27.5	121-258	.469	0-0	.000	37-67	.552	71	115	186	6.4	78-1	16	61	42	30	279	9.6	
2019-20	LSU	30-30	874/29.1	143-311	.460	0-1	.000	41-79	.519	70	167	237	7.9	82-1	15	71	63	18	327	10.9	
2020-21	LSU	22-22	714/32.4	100-236	.424	2-6	.333	41-63	.651	75	120	195	8.9	71-1	13	37	39	17	243	11.0	
2021-22	LSU	26-23	606/23.3	111-215	.516	0-0	.000	38-65	.585	75	98	173	6.7	69-3	14	37	33	13	260	10.0	
TOTAL		135-118	3493/25.9	535-1157	.462	2-7	.286	181-320	.566	345	586	931	6.9	385-10	68	256	221	85	1253	9.3	

Season Highs

Points	20 twice
Rebounds	14 at Ole Miss (2/7/22)
Assists	3 at UGA (12/30/21)
Steals	2 vs. Nicholls (11/9/21)
Blocks	4 at Auburn (1/9/22)
FG Made	8 twice
FG Attempts	12 vs. FGCU (11/14/21)
FT Made	5 vs. Samford (12/27/21)
FG Attempts	6 vs. Samford (12/27/21)

Career Highs

Points	20 Four times
Rebounds	16 Three times
Assists	3 vs. Florida (2/21/19)
Steals	4 at Ole Miss (1/10/19)
Blocks	7 Three times
FG Made	10 Three times
FG Attempts	18 Twice
3FG Made	1 Twice
3FG Attempts	2 Twice
FT Made	5 twice
FT Attempts	8 Twice

Season Honors

- No. 2 on LSU's all-time blocks list (193) behind only Sylvia Fowles (321)
- With 8 points in the season opener, she surpassed 1,000 career points
- Has recorded 7 blocks in a game three times, most recently at No. 1 South Carolina
- One of 12 players in program history with 790+ rebounds and needs 41 to break into the program's top-10
- Has recorded 20 double-doubles



#30

Grace Hall

Forward | 6-1 | Freshman | Chicago, Illinois

Opponent	Min	FG	3P	FT	ORB	DRB	TRB	PF	Pts.	Asst.	TO	ST	Blocks	+/-
Nicholls	0:27	0-0	0-0	0-0	0	0	0	0	0	0	0	0	0	0
Florida Gulf Coast	--	--	--	--	--	--	--	--	--	--	--	--	--	--
at UL-Lafayette	--	--	--	--	--	--	--	--	--	--	--	--	--	--
Tulane	0:21	0-0	0-0	0-0	0	0	0	0	0	0	0	0	0	0
New Mexico State	1:05	0-0	0-0	0-0	0	0	0	0	0	0	0	0	0	0
Missouri State	--	--	--	--	--	--	--	--	--	--	--	--	--	--
Iowa State	--	--	--	--	--	--	--	--	--	--	--	--	--	--
Texas Southern	11:23	2-2	2-2	2-2	0	1	1	0	8	2	1	0	0	5
Alcorn State	12:38	3-3	2-2	2-2	1	3	4	0	10	0	1	1	0	23
Bradley	5:14	0-3	0-2	0-0	0	0	0	0	0	0	1	0	0	-17
Clemson	--	--	--	--	--	--	--	--	--	--	--	--	--	--
Texas Tech	--	--	--	--	--	--	--	--	--	--	--	--	--	--
Samford	4:01	1-1	1-1	0-0	0	0	0	1	3	0	0	0	0	0
at Georgia	--	--	--	--	--	--	--	--	--	--	--	--	--	--
Texas A&M	--	--	--	--	--	--	--	--	--	--	--	--	--	--
South Carolina	--	--	--	--	--	--	--	--	--	--	--	--	--	--
at Auburn	--	--	--	--	--	--	--	--	--	--	--	--	--	--
Missouri	--	--	--	--	--	--	--	--	--	--	--	--	--	--
Vanderbilt	--	--	--	--	--	--	--	--	--	--	--	--	--	--
at Florida	--	--	--	--	--	--	--	--	--	--	--	--	--	--
at Arkansas	--	--	--	--	--	--	--	--	--	--	--	--	--	--
Kentucky	--	--	--	--	--	--	--	--	--	--	--	--	--	--
at Ole Miss	--	--	--	--	--	--	--	--	--	--	--	--	--	--
Georgia	--	--	--	--	--	--	--	--	--	--	--	--	--	--
at Texas A&M	--	--	--	--	--	--	--	--	--	--	--	--	--	--
at Mississippi State	--	--	--	--	--	--	--	--	--	--	--	--	--	--
Florida	--	--	--	--	--	--	--	--	--	--	--	--	--	--
Alabama	--	--	--	--	--	--	--	--	--	--	--	--	--	--
at Tennessee	--	--	--	--	--	--	--	--	--	--	--	--	--	--

*-Start

SEASON	TEAM	GP-GS	MIN/AVG	FG-FGA	FG%	3FG-ATT	3FG%	FT-FTA	FT%	ORB	DRB	TRB	AVG	PF-FO	A	TO	BLK	STL	PTS	AVG
2021-22	LSU	7-0	35/5.0	6-9	.667	5-7	.714	4-4	1.000	1	4	5	0.7	1-0	2	3	0	1	21	3.0
TOTAL		7-0	35/5.0	6-9	.667	5-7	.714	4-4	1.000	1	4	5	0.7	1-0	2	3	0	1	21	3.0

Season Highs

Points 10 vs. Alcorn St. (12/15/21)
 Rebounds 4 vs. Alcorn St. (12/15/21)
 Assists 2 vs. TSU (12/12/21)
 Steals 1 vs. Alcorn St. (12/15/21)
 Blocks --
 FG Made 3 vs. Alcorn St. (12/15/21)
 FG Attempts 3 vs. Alcorn St. (12/15/21)
 3FG Made 2 twice
 3FG Attempts 2 twice
 FT Made 2 twice
 FG Attempts 2 twice

Career Highs

Points 10 vs. Alcorn St. (12/15/21)
 Rebounds 4 vs. Alcorn St. (12/15/21)
 Assists 2 vs. TSU (12/12/21)
 Steals 1 vs. Alcorn St. (12/15/21)
 Blocks --
 FG Made 3 vs. Alcorn St. (12/15/21)
 FG Attempts 3 vs. Alcorn St. (12/15/21)
 3FG Made 2 twice
 3FG Attempts 2 twice
 FT Made 2 twice
 FG Attempts 2 twice

Player Notes

- Has made her first five field goal attempts and four three-point attempts of her college career



#32

Awa Trasi

Forward | 6-1 | Senior | Toulouse, France

Opponent	Min	FG	3P	FT	ORB	DRB	TRB	PF	Pts.	Asst.	TO	ST	Blocks	+/-
Nicholls	8:29	0-0	0-0	2-2	1	1	2	2	2	1	0	1	0	4
Florida Gulf Coast	20:09	2-4	0-0	0-0	1	1	2	5	4	2	1	1	0	-3
at UL-Lafayette	22:26	6-7	1-1	4-5	2	4	6	1	17	0	2	0	0	27
Tulane*	9:54	3-4	0-0	1-1	1	2	3	0	7	0	1	0	0	1
New Mexico State*	13:08	3-4	0-0	1-1	0	1	1	3	7	1	0	0	0	8
Missouri State	3:23	0-1	0-0	0-0	0	0	0	0	0	0	0	0	0	-2
Iowa State	7:14	0-1	0-0	0-0	0	0	0	1	0	0	1	0	0	2
Texas Southern*	11:11	1-1	0-0	3-3	1	3	4	0	5	0	2	0	1	18
Alcorn State	18:21	3-4	0-0	2-4	3	1	4	1	8	2	0	2	0	33
Bradley	15:14	2-5	0-0	4-4	0	2	2	2	8	0	1	0	0	16
Clemson	20:57	3-3	0-0	1-2	2	3	5	4	7	0	3	1	0	12
Texas Tech	16:43	0-4	0-0	0-0	2	3	5	2	0	0	1	0	0	0
Samford	--	--	--	--	--	--	--	--	--	--	--	--	--	--
at Georgia	0:28	0-0	0-0	0-0	0	0	0	0	0	0	0	0	0	0
Texas A&M	12:21	2-3	0-0	0-0	2	1	3	1	4	0	0	0	0	1
South Carolina	5:52	0-1	0-1	0-0	0	0	0	3	0	0	0	0	0	-6
at Auburn	4:16	0-0	0-0	0-0	0	0	0	0	0	0	0	0	1	-1
Missouri	8:28	0-0	0-0	0-0	1	0	1	0	0	1	2	2	0	-8
Vanderbilt*	22:29	1-5	0-0	2-4	4	3	7	3	4	1	1	0	1	24
at Florida	14:35	1-1	0-0	1-2	3	1	4	3	3	0	0	0	0	0
at Arkansas	11:38	0-0	0-0	1-2	0	3	3	1	1	0	0	0	0	-4
Kentucky	9:27	0-1	0-0	0-0	4	0	4	0	0	0	1	0	0	-7
at Ole Miss	4:22	0-1	0-0	0-0	1	2	3	1	0	0	1	0	0	3
Georgia	13:34	1-2	0-0	0-0	2	2	4	2	2	1	1	1	0	4
at Texas A&M	3:44	0-1	0-0	0-2	2	1	3	2	0	0	0	0	0	-1
at Mississippi State	8:38	1-1	0-0	0-0	0	2	2	0	2	0	1	0	0	18
Florida														
Alabama														
at Tennessee														

*-Start

SEASON	TEAM	GP-GS	MIN/AVG	FG-FGA	FG%	3FG-ATT	3FG%	FT-FTA	FT%	ORB	DRB	TRB	AVG	PF-FO	A	TO	BLK	STL	PTS	AVG
2019-20	LSU	30-9	618/20.6	72-186	.387	27-73	.370	25-36	.694	46	64	110	3.7	82-4	22	53	7	16	196	6.5
2020-21	LSU	21-18	571/27.2	62-152	.408	5-32	.156	32-41	.780	35	48	83	4.0	77-5	16	46	4	19	161	7.7
2021-22	LSU	25-4	287/11.5	29-54	.537	1-2	.500	22-32	.688	32	36	68	2.7	37-1	9	19	3	8	81	3.2
TOTAL		76-31	1476/19.4	163-392	.416	33-107	.308	79-109	.725	113	148	261	3.4	196-10	47	118	14	43	438	5.8

Season Highs

Points 17 at ULL (11/18/21)
 Rebounds 6 at ULL (11/18/21)
 Assists 2 twice
 Steals 2 vs. Alcorn St. (12/15/21)
 Blocks 1 vs. TSU (12/12/21)
 FG Made 6 at ULL (11/18/21)
 FG Attempts 7 at ULL (11/18/21)
 FT Made 4 twice
 FG Attempts 5 at ULL (11/18/21)

Career Highs

Points 22 vs. Tennessee (2/13/20)
 Rebounds 10 vs. MSU (3/6/20)
 Assists 4 vs. UNO (11/5/19)
 Steals 3 vs. Nicholls (12/3/19)
 Blocks 2 at Ole Miss (1/4/21)
 FG Made 8 vs. Tennessee (2/13/20)
 FG Attempts 18 vs. Tennessee (2/13/20)
 3FG Made 5 vs. Tennessee (2/13/20)
 3FG Attempts 10 vs. Tennessee (2/13/20)
 FT Made 7 vs. Ole Miss (1/31/21)
 FT Attempts 8 vs. Ole Miss (1/31/21)

Player Notes

- Helped LSU's offense get going in the win over ULL, leading the Tigers with 17 in their first road game
 - One of two players from France on LSU's roster



#45

Alexis Morris

Guard | 5-6 | Senior | Beaumont, Texas

Opponent	Min	FG	3P	FT	ORB	DRB	TRB	PF	Pts.	Asst.	TO	ST	Blocks	+/-
Nicholls	--	--	--	--	--	--	--	--	--	--	--	--	--	--
Florida Gulf Coast	37:36	5-11	0-3	2-4	2	3	5	3	12	2	4	4	2	-9
at UL-Lafayette*	33:46	5-13	0-3	0-0	0	4	4	2	10	2	2	3	1	32
Tulane*	39:04	5-13	0-4	2-2	0	5	5	2	12	5	3	2	0	20
New Mexico State*	31:43	3-8	0-4	6-6	4	3	7	1	12	2	1	1	0	27
Missouri State*	32:22	4-6	1-1	4-6	0	2	2	1	13	1	2	1	0	5
Iowa State*	40:00	9-18	5-7	2-4	0	4	4	1	25	2	1	2	0	9
Texas Southern*	18:58	4-6	1-2	2-2	0	2	2	1	11	4	1	2	0	32
Alcorn State*	17:10	7-11	0-2	0-0	0	2	2	0	14	1	0	2	0	27
Bradley*	25:41	7-12	1-5	2-2	0	3	3	0	17	5	1	2	0	23
Clemson*	37:30	6-15	0-4	8-15	2	4	6	3	12	5	1	3	0	15
Texas Tech*	27:05	6-12	0-1	1-1	0	2	2	2	13	6	1	1	0	4
Samford	--	--	--	--	--	--	--	--	--	--	--	--	--	--
at Georgia*	40:00	3-8	0-2	2-2	0	4	4	1	8	6	1	6	0	6
Texas A&M*	36:37	9-16	4-9	8-12	1	4	5	2	30	3	3	1	0	8
South Carolina*	39:20	7-17	0-2	0-0	0	0	0	2	14	2	1	1	0	-6
at Auburn*	31:26	4-8	1-1	0-0	2	3	5	1	9	3	2	1	1	28
Missouri*	43:24	8-18	1-8	0-0	0	7	7	2	17	2	3	3	1	3
Vanderbilt*	32:50	9-13	1-3	1-2	0	7	7	3	20	2	5	2	0	26
at Florida*	30:52	4-13	0-1	0-0	2	3	5	3	8	1	3	1	1	-10
at Arkansas	33:35	9-18	3-6	1-2	2	4	6	1	22	1	1	3	0	-6
Kentucky*	40:00	8-16	2-4	2-4	0	2	2	3	20	4	1	0	0	9
at Ole Miss*	40:00	6-12	1-1	4-8	1	5	6	4	17	2	2	3	0	4
Georgia*	38:47	5-15	3-4	13-14	0	5	5	1	26	6	6	1	0	6
at Texas A&M*	39:49	10-16	3-5	2-2	1	6	7	1	25	3	1	0	0	16
at Mississippi State*	37:56	7-18	2-6	7-7	0	2	2	1	23	1	0	1	0	14
Florida														
Alabama														
at Tennessee														

*-Start

SEASON	TEAM	GP-GS	MIN/AVG	FG-FGA	FG%	3FG-ATT	3FG%	FT-FTA	FT%	ORB	DRB	TRB	AVG	PF-FO	A	TO	BLK	STL	PTS	AVG
2017-18	Baylor	34-8	891/26.2	119-270	.441	30-65	.462	51-61	.836	12	87	99	2.9	70-0	116	60	1	29	319	9.4
2019-20	RU	7-0	59/8.4	3-12	.250	0-2	.000	1-2	.500	1	4	5	0.7	7-0	4	6	0	5	7	1.0
2020-21	TA&M	20-0	187/9.4	36-77	.468	6-16	.375	42-49	.857	5	21	26	1.3	18-0	26	24	0	9	120	6.0
2021-22	LSU	24-23	827/34.4	148-309	.479	30-89	.337	64-83	.771	17	86	103	4.3	41-0	71	46	6	46	390	16.3
TOTAL FOR LSU		24-23	827/34.4	148-309	.479	30-89	.337	64-83	.771	17	86	103	4.3	41-0	71	46	6	46	390	16.3
TOTAL		85-31	1964/23.1	306-668	.458	66-172	.384	158-195	.810	35	198	233	2.7	136-0	217	136	7	89	836	9.8

Season Highs

Points	30 vs. TAMU (1/2/22)
Rebounds	7 three times
Assists	6 three times
Steals	6 at No. 13 UGA (12/30/21)
Blocks	2 vs. FGCU (11/14/21)
FG Made	10 at Texas A&M (2/13/22)
FG Attempts	18 vs. No. 14 Iowa St. (12/2/21)
3FG Made	5 vs. No. 14 Iowa St. (12/2/21)
3FG Attempts	9 vs. TAMU (1/2/22)
FT Made	13 vs Georgia (2/10/22)
FG Attempts	14 vs Georgia (2/10/22)

Career Highs

Points	30 vs. TAMU (1/2/22)
Rebounds	7 three times
Assists	8 twice
Steals	4 three times
Blocks	2 vs. FGCU (11/14/21)
FG Made	9 three times
FG Attempts	19 vs. Oregon St. (3/23/18)
3FG Made	5 vs. No. 14 Iowa St. (12/2/21)
3FG Attempts	9 vs. TAMU (1/2/22)
FT Made	13 vs Georgia (2/10/22)
FG Attempts	14 vs Georgia (2/10/22)

Player Notes

- Her block with time expiring in the Missouri game secured LSU's OT win
 -Set a career high with 30 against Texas A&M, the team she transferred to LSU from.
 - Had a career day to lead LSU to a win over No. 14 Iowa St. with 25 points, including five threes playing all 40 minutes
 -Played for Coach Mulkey at Baylor as a freshman and was named to the Big 12 All-Freshman team

Officials:

Langston - 48

Record: 0-0

Box score table for Langston vs LSU, including columns for Player Name, Min, FG, 3P, FT, Rebounds, Fouls, TP, AS, TO, ST, Blocks, +/-.

Shooting By Period table for Langston vs LSU, showing 1st, 2nd, 3rd, and 4th quarter performance.

Technical Fouls: NONE

Dead Ball Rebounds: 4, 0

LSU - 112

Record: 0-0

Box score table for LSU vs Langston, including columns for Player Name, Min, FG, 3P, FT, Rebounds, Fouls, TP, AS, TO, ST, Blocks, +/-.

Shooting By Period table for LSU vs Langston, showing 1st, 2nd, 3rd, and 4th quarter performance.

Technical Fouls: NONE

Dead Ball Rebounds: 7, 0

Summary statistics table for Langston vs LSU, including Biggest lead, Best Scoring Run, Lead Changes, Times Tied, and Time with Lead.

Points from Turnovers, Second Chance, Fast Breaks, and Bench performance summary.

Exhibition



Officials: Angelica Saffron, Katie Lukonik, Stephanie Berksdale

Nicholls St. - 40

Record: 0-1

Box score table for Nicholls St. vs LSU, including columns for Player Name, Min, FG, 3P, FT, Rebounds, Fouls, TP, AS, TO, ST, Blocks, +/-.

Shooting By Period table for Nicholls St. vs LSU, showing 1st, 2nd, 3rd, and 4th quarter performance.

Technical Fouls: NONE

Dead Ball Rebounds: 3, 0

LSU - 82

Record: 1-0

Box score table for LSU vs Nicholls St., including columns for Player Name, Min, FG, 3P, FT, Rebounds, Fouls, TP, AS, TO, ST, Blocks, +/-.

Shooting By Period table for LSU vs Nicholls St., showing 1st, 2nd, 3rd, and 4th quarter performance.

Technical Fouls: NONE

Dead Ball Rebounds: 4, 0

Summary statistics table for Nicholls St. vs LSU, including Biggest lead, Best Scoring Run, Lead Changes, Times Tied, and Time with Lead.

Points from Turnovers, Second Chance, Fast Breaks, and Bench performance summary.



Officials: Michael McConnell, Kevin Pettit, Karensa Tobin

Loyola - 49

Record: 0-0

Box score table for Loyola vs LSU, including columns for Player Name, Min, FG, 3P, FT, Rebounds, Fouls, TP, AS, TO, ST, Blocks, +/-.

Shooting By Period table for Loyola vs LSU, showing 1st, 2nd, 3rd, and 4th quarter performance.

Technical Fouls: NONE

Dead Ball Rebounds: 4, 0

LSU - 87

Record: 0-0

Box score table for LSU vs Loyola, including columns for Player Name, Min, FG, 3P, FT, Rebounds, Fouls, TP, AS, TO, ST, Blocks, +/-.

Shooting By Period table for LSU vs Loyola, showing 1st, 2nd, 3rd, and 4th quarter performance.

Technical Fouls: NONE

Dead Ball Rebounds: 1, 0

Summary statistics table for Loyola vs LSU, including Biggest lead, Best Scoring Run, Lead Changes, Times Tied, and Time with Lead.

Points from Turnovers, Second Chance, Fast Breaks, and Bench performance summary.

Exhibition



Officials: Mark Zentz, Maggie Tieman, Sai Esho

FGCU - 88

Record: 3-0

Box score table for FGCU vs LSU, including columns for Player Name, Min, FG, 3P, FT, Rebounds, Fouls, TP, AS, TO, ST, Blocks, +/-.

Shooting By Period table for FGCU vs LSU, showing 1st, 2nd, 3rd, and 4th quarter performance.

Technical Fouls: NONE

Dead Ball Rebounds: 4, 14

LSU - 74

Record: 1-1

Box score table for LSU vs FGCU, including columns for Player Name, Min, FG, 3P, FT, Rebounds, Fouls, TP, AS, TO, ST, Blocks, +/-.

Shooting By Period table for LSU vs FGCU, showing 1st, 2nd, 3rd, and 4th quarter performance.

Technical Fouls: NONE

Dead Ball Rebounds: 2, 0

Summary statistics table for FGCU vs LSU, including Biggest lead, Best Scoring Run, Lead Changes, Times Tied, and Time with Lead.

Points from Turnovers, Second Chance, Fast Breaks, and Bench performance summary.





Record: 2-1

NO. Name	Min	FG	3P	FT	Rebounds	Fouls	TP	AS	TO	ST	Blocks	+/-
Min	M.A	M.A	M.A	OR DR TOT	PF FD						BS BA	
0 Autumn Newby	F 30:52	2-3	0-0	3-6	2 10 12	2 4	7	0	0	0	1	0 31
24 Faustine Aifuwa	F 07:55	0-3	0-0	1-2	2 3 5	2 1	1	0	2	0	0	0 5
1 Jalin Cherry	G 18:50	1-4	0-0	0-0	4 4 2	0 2	2	1	1	0	0	0 15
3 Khayla Pointer	G 35:23	3-13	1-2	2-3	3 3 6	3 9	3	3	0	0	1	22
45 Alexis Morris	G 33:46	5-13	0-3	0-0	4 4 2	1 0	2	2	3	1	0	32
10 Ryan Payne	22:53	5-8	1-1	0-0	1 1 1	1 0	11	0	3	2	0	15
20 Hannah Gusters	12:28	2-6	0-0	3-3	2 1 3	2 3	7	0	3	1	0	2
32 Awa Trasi	22:26	6-7	1-1	4-5	2 4 6	1 3	17	0	2	0	0	27
21 Timia Ware	04:37	2-3	0-0	0-2	0 1 1	2 1	4	0	3	2	0	2
14 Sarah Shematsi	03:49	0-2	0-2	0-0	0 1 1	1 0	0	0	0	1	0	2
15 Ajae Petty	03:49	1-3	0-0	0-0	1 2 3	0 0	2	0	0	0	1	2
11 Emily Ward	01:36	0-0	0-0	0-0	0 1 1	0 0	0	0	0	0	0	1
23 Amani Barlett	01:36	0-0	0-0	0-0	0 0 0	1 0	0	0	0	0	0	1
Team					2 3 5		0					
Totals		27:65	9-10	13-21	14 38 52	19 18	70	6	19	9	2	29

Shooting By Period
 1st FG% 4-16 25.0%
 3PT% 0-3 0.0%
 FT% 2-3 66.7%
 2nd FG% 8-18 44.4%
 3PT% 3-4 75.0%
 FT% 1-2 50.0%
 3rd FG% 8-14 57.1%
 3PT% 0-1 0.0%
 FT% 5-8 62.5%
 4th FG% 7-17 41.2%
 3PT% 0-2 0.0%
 FT% 5-8 62.5%
 GM FG% 27:65 41.5%
 3PT% 3-10 30.0%
 FT% 13:21 61.9%

Technical Fouls: NONE
 Dead Ball Rebounds: 5, 0

Record: 2-1

NO. Name	Min	FG	3P	FT	Rebounds	Fouls	TP	AS	TO	ST	Blocks	+/-
Min	M.A	M.A	M.A	OR DR TOT	PF FD						BS BA	
5 Tamara Johnson	F 27:16	2-10	1-5	0-0	0 2 2	2 3	5	0	1	0	1	1 14
35 Ty'Reona Doucet	F 19:11	0-6	0-0	0-0	0 2 2	3 1	2	1	2	2	0	-10
2 Brandi Williams	G 26:54	4-8	1-1	1-3	1 0 1	4 5	10	1	0	1	0	-14
3 Makayia Hallmon	G 22:35	2-6	1-1	0-0	0 3 3	1 0	5	0	6	1	0	-19
24 Destiny Rice	G 25:01	5-7	0-0	0-2	2 5 7	1 2	10	0	1	0	0	-16
4 Lanay Wheaton	15:19	0-2	0-0	0-0	0 1 1	1 0	0	0	8	0	0	-19
20 Catra Wran	13:13	0-1	0-0	0-0	0 1 1	2 0	0	0	2	0	0	-10
0 Ashlyn Jones	12:44	0-1	0-1	1-2	0 2 2	3 1	0	1	0	1	0	-15
15 Diamond Morrison	12:58	0-5	0-2	0-0	0 0 0	1 0	0	2	0	0	0	-12
23 Alicia Blanton	12:47	1-3	0-0	2-3	0 2 2	1 3	4	0	1	1	0	-8
13 Skyler Christmas	04:26	0-3	0-1	4-4	0 0 0	1 2	4	0	2	1	0	1
33 Lafaedia Green	07:36	0-0	0-0	0-0	0 2 2	0 0	0	1	1	0	0	-9
Team					2 4 6		0					
Totals		14:52	3-11	10-16	5 24 29	18 19	41	2	26	9	2	29

Shooting By Period
 1st FG% 3-9 33.3%
 3PT% 2-3 66.7%
 FT% 2-5 40%
 2nd FG% 2-13 15.4%
 3PT% 0-1 0.0%
 FT% 0-0 0%
 3rd FG% 7-16 43.8%
 3PT% 1-3 33.3%
 FT% 4-5 80%
 4th FG% 2-14 14.3%
 3PT% 0-4 0.0%
 FT% 4-6 66.7%
 GM FG% 14:52 26.9%
 3PT% 1-11 27.3%
 FT% 10-16 62.5%

Technical Fouls: NONE
 Dead Ball Rebounds: 1, 3

Biggest lead	LSU	LA	Points from Turnovers	LSU	LA	Period by Period Scoring
Best Scoring Run	29 (4 th 3:39) 2 (1 st 1:43)		26		10	1st 2nd 3rd 4th TOT
Lead Changes	5		23		4	LSU 10 20 21 19 70
Times Tied	4		20		11	LA 10 4 19 8 41
Time with Lead	33:07	04:19	Fast Breaks		4	Bench
			Bench		41	9



Record: 2-2

NO. Name	Min	FG	3P	FT	Rebounds	Fouls	TP	AS	TO	ST	Blocks	+/-	
Min	M.A	M.A	M.A	OR DR TOT	PF FD						BS BA		
24 Bigue Sarr	F 22:14	6-10	0-0	1-1	1 3 4	3 3	13	0	3	1	1	1 15	
3 Melanie Isbell	G 29:22	1-6	0-2	0-0	0 1 1	3 1	2	4	0	1	1	0 7	
4 Jade Bradley	G 12:43	1-1	0-0	0-0	0 2 2	3 0	2	0	2	0	0	10	
11 Soufia Inoussa	G 18:45	4-7	1-3	2-4	1 2 3	3 4	11	1	1	0	0	-4	
34 Tayelin Grays	G 18:34	0-4	0-2	0-2	2 2 4	3 1	0	2	1	1	0	-4	
20 Taylor Donaldson	26:38	2-4	1-3	1-2	1 3 4	2 4	6	3	2	1	0	-15	
0 Molly Kaiser	15:18	3-6	1-2	2-2	0 0 0	2 1	9	0	2	1	0	-9	
21 Deja Terrill	09:43	0-1	0-0	1-2	1 1 2	4 1	1	0	2	0	1	-5	
12 Kayla Watkins	12:03	2-9	2-6	0-0	0 1 1	0 1	6	0	1	0	2	-11	
5 Moe Shida	10:38	0-1	0-0	0-0	0 1 1	0 1	0	1	1	0	0	-13	
33 Grace Colaivalu	15:03	0-4	0-0	2-2	0 2 2	3 2	2	1	2	0	0	-8	
23 Sylena Peterson	02:55	0-0	0-0	0-0	0 0 0	1 1	0	0	0	0	0	-13	
30 Fama Thiam	06:04	0-0	0-0	0-0	0 0 0	0 0	0	0	0	0	0	-6	
Team					3 5 8		0						
Totals		19:53	5-18	9-15	9 23 32	29 18	52	12	17	5	4	6	-20

Shooting By Period
 1st FG% 7-14 50.0%
 3PT% 1-4 25.0%
 FT% 2-4 50%
 2nd FG% 5-14 35.7%
 3PT% 2-7 28.6%
 FT% 1-4 25%
 3rd FG% 5-13 38.5%
 3PT% 1-4 25.0%
 FT% 5-5 100%
 4th FG% 2-12 16.7%
 3PT% 1-3 33.3%
 FT% 1-2 50%
 GM FG% 19:53 35.8%
 3PT% 5-18 27.8%
 FT% 9-15 60.0%

Technical Fouls: NONE
 Dead Ball Rebounds: 3, 0

Record: 4-1

NO. Name	Min	FG	3P	FT	Rebounds	Fouls	TP	AS	TO	ST	Blocks	+/-
Min	M.A	M.A	M.A	OR DR TOT	PF FD						BS BA	
32 Awa Trasi	F 13:08	3-4	0-0	1-1	0 1 1	3 2	7	1	0	0	0	8
20 Hannah Gusters	C 16:25	2-5	0-0	2-2	3 3 5	2 6	0	1	0	2	0	-2
1 Jalin Cherry	G 16:54	3-8	0-1	0-0	1 3 4	3 6	2	2	2	0	0	-4
3 Khayla Pointer	G 36:04	8-19	2-4	2-3	2 3 5	2 4	20	1	1	0	1	23
45 Alexis Morris	G 31:43	3-8	0-4	6-6	4 3 7	1 3	12	2	1	1	0	27
0 Autumn Newby	25:17	2-4	0-0	2-7	4 1 5	3 7	6	0	2	2	1	14
10 Ryan Payne	24:05	1-6	0-1	5-6	1 3 4	1 6	7	3	1	1	0	17
14 Sarah Shematsi	04:51	0-0	0-0	0-2	0 0 0	1 0	0	1	0	0	0	-2
21 Timia Ware	04:54	0-0	0-0	0-0	0 0 0	1 0	0	1	1	0	0	2
24 Faustine Aifuwa	21:51	3-11	0-0	0-2	3 5 8	2 4	8	0	1	0	2	10
15 Ajae Petty	02:38	0-0	0-0	0-0	0 1 1	0 0	0	0	0	0	0	0
23 Amani Barlett	01:05	0-0	0-0	0-0	0 1 1	0 0	0	0	0	0	0	0
30 Grace Hall	01:05	0-0	0-0	0-0	0 0 0	0 0	0	0	0	0	0	0
Team					4 3 7		0					
Totals		25:65	2-10	20-29	21 27 48	18 29	72	10	12	4	6	20

Shooting By Period
 1st FG% 4-16 25.0%
 3PT% 0-4 0.0%
 FT% 7-10 70%
 2nd FG% 5-17 29.4%
 3PT% 0-3 0.0%
 FT% 4-8 50%
 3rd FG% 9-21 42.9%
 3PT% 2-2 100.0%
 FT% 2-5 40%
 4th FG% 7-11 63.6%
 3PT% 0-1 0.0%
 FT% 5-6 83.3%
 GM FG% 25:65 36.5%
 3PT% 2-10 20.0%
 FT% 20-29 69.0%

Technical Fouls: NONE
 Dead Ball Rebounds: 5, 1

Biggest lead	NMS	LSU	Points from Turnovers	NMS	LSU	Period by Period Scoring
Best Scoring Run	9 (1 st 2:40) 20 (4 th 1:40)		11		17	1st 2nd 3rd 4th TOT
Lead Changes	4		14		28	NMS 17 13 16 6 52
Times Tied	4		8		10	LSU 15 14 24 19 72
Time with Lead	21:36	16:07	Fast Breaks		8	Bench
			Bench		24	21



Record: 4-1

NO. Name	Min	FG	3P	FT	Rebounds	Fouls	TP	AS	TO	ST	Blocks	+/-	
Min	M.A	M.A	M.A	OR DR TOT	PF FD						BS BA		
23 Krystal Freeman	F 21:17	0-7	0-3	4-4	2 1 3	1 3	4	0	2	1	0	1 8	
42 Mia Hyde	F 22:57	3-5	0-0	0-0	0 0 0	4 0	4	0	1	0	2	0 20	
0 Arsula Clark	G 33:53	3-11	0-1	3-6	2 8 2	8 2	5	9	4	4	2	0 3 13	
11 Moon Ustin	G 36:52	6-14	1-3	0-0	5 5 10	2 2	13	2	1	1	0	18	
14 Dyanah Jones	G 29:33	6-10	4-6	2-6	0 4 4	2 3	18	1	0	0	0	1	
15 Anjah Grant	10:37	1-1	0-0	0-0	0 0 0	0 4	0	2	0	1	0	0 3	
12 Sierra Cheatham	18:43	2-7	2-6	0-0	1 4 5	1 1	6	0	2	2	0	-7	
1 Kalia Anderson	11:39	0-3	0-3	0-0	0 1 1	1 0	0	0	1	0	0	-22	
3 Marja Galic	01:23	0-0	0-0	0-0	0 0 0	0 0	0	0	2	0	0	-7	
5 Kalia Warmisley	03:20	0-3	0-3	0-0	0 0 0	0 0	0	2	0	0	0	-1	
21 Irina Parau	09:46	0-5	0-2	0-0	1 1 2	0 0	0	0	0	0	0	-3	
Team					4 2 6		0						
Totals		21:66	7-27	9-16	21 22 43	16 15	58	9	17	7	2	6	17

Shooting By Period
 1st FG% 5-16 31.3%
 3PT% 0-4 0.0%
 FT% 2-2 100%
 2nd FG% 4-13 30.8%
 3PT% 2-6 33.3%
 FT% 2-6 33.3%
 3rd FG% 7-16 43.8%
 3PT% 2-7 28.6%
 FT% 2-6 33.3%
 4th FG% 5-21 23.8%
 3PT% 3-10 30.0%
 FT% 3-6 50%
 GM FG% 21:66 31.8%
 3PT% 7-27 25.9%
 FT% 9-16 56.3%

Technical Fouls: NONE
 Dead Ball Rebounds: 4, 0

Record: 3-1

NO. Name	Min	FG	3P	FT	Rebounds	Fouls	TP	AS	TO	ST	Blocks	+/-
Min	M.A	M.A	M.A	OR DR TOT	PF FD						BS BA	
32 Awa Trasi	F 27:16	3-4	0-0	1-1	1 2 3	0 1	7	0	1	0	0	0 1
24 Faustine Aifuwa	C 27:02	8-10	0-0	1-4	6 2 8	3 4	4	17	1	1	0	3 0 4
1 Jalin Cherry	G 37:19	5-16	0-2	0-0	2 4 6	5 2	10	2	1	2	1	1 14
3 Khayla Pointer	G 39:39	6-15	1-4	1-2	1 3 4	1 1	14	3	6	1	0	0 17
45 Alexis Morris	G											



Iowa St. - 60

Record: 7-1

NO. Name	Min	FG	3P	FT	Rebounds		Fouls	TP	AS	TO	ST	Blocks			+/-	
					OR	DR						FF	PF	BS		BA
31 Morgan Kane	21:52	2-3	1-1	2-2	1	2	3	4	1	7	1	3	0	0	0	4
11 Emily Ryan	G 31:51	4-11	2-4	3-4	0	1	2	2	13	3	4	1	0	0	0	-12
20 Aubrey Joans	G 38:20	1-5	0-4	0-0	0	12	0	1	2	2	2	0	0	1	0	-11
21 Alexi Donarski	G 39:11	4-13	2-5	0-0	1	4	5	2	10	1	5	0	1	0	0	-11
24 Ashley Joans	G 38:37	8-12	4-6	4-4	1	7	8	2	26	1	3	1	0	0	0	-7
25 Beatriz Jordao	06:50	2-3	0-0	0-0	1	2	4	0	4	1	1	0	0	0	0	-6
32 Maggie Vick	18:50	0-3	0-3	0-0	1	2	2	0	0	1	0	1	0	0	0	-1
15 Izzi Zingaro	02:29	0-2	0-0	0-0	0	0	0	0	0	0	0	0	0	0	1	-1
Team					0	3	3									
Totals		21-52	9-23	9-10	5	31	36	16	12	60	10	16	3	2	1	-9

Shooting By Period			
1 st FG%	4.8	57.0%	
2 nd FG%	3.1	27.3%	
3 rd FG%	6.1	50.0%	
4 th FG%	4.2	33.3%	
GM FG%	21.52	40.4%	
3PT%	9.23	39.1%	
FT%	9-10	90.0%	

Technical Fouls: NONE



Texas Southern - 55

Record: 0-6

NO. Name	Min	FG	3P	FT	Rebounds		Fouls	TP	AS	TO	ST	Blocks			+/-	
					OR	DR						FF	PF	BS		BA
21 Jada Perry	F 21:36	5-11	0-0	0-0	0	2	2	5	1	10	0	3	0	0	0	-17
4 Andriana Avert	G 31:15	3-16	2-6	0-0	0	2	2	2	1	8	3	2	1	1	1	-26
20 Jala Buser	G 28:06	4-7	0-0	5-8	0	2	2	1	4	13	1	1	1	1	1	-27
24 Alaiya Bridges	G 38:30	4-13	1-1	1-2	0	1	1	2	5	10	4	2	1	0	0	-36
32 Shalexxus Aaron	G 24:30	3-6	3-5	2-2	0	1	1	3	1	11	1	1	1	0	0	-20
45 Amaz Carmichael	23:23	0-2	0-0	0-0	2	3	5	3	0	0	0	2	1	3	1	-32
5 Ashley Austin	08:33	0-1	0-1	0-0	0	0	0	0	0	0	0	2	1	0	0	-22
12 Alisa Knight	24:07	1-3	1-1	0-0	0	1	1	2	1	3	2	3	1	2	1	-25
Team					4	2	6									
Totals		20-59	7-14	8-12	6	14	20	18	13	55	11	19	8	7	7	-41

Shooting By Period			
1 st FG%	7.16	43.8%	
2 nd FG%	3.2	40.0%	
3 rd FG%	4.16	25.0%	
4 th FG%	6.13	46.2%	
GM FG%	20.59	33.9%	
3PT%	7-14	50.0%	
FT%	8-12	66.7%	

Technical Fouls: NONE

Dead Ball Rebounds: 2.0

LSU - 69

Record: 6-1

NO. Name	Min	FG	3P	FT	Rebounds		Fouls	TP	AS	TO	ST	Blocks			+/-	
					OR	DR						FF	PF	BS		BA
0 Autumn Newby	F 24:50	1-2	0-0	0-0	1	2	3	0	0	2	0	2	0	0	0	7
24 Faustine Aifuwa	C 16:49	2-5	0-0	2-2	1	3	4	1	2	6	0	1	1	0	0	2
1 Jalin Cherry	G 15:56	0-3	0-0	0-0	0	4	4	0	2	0	1	1	1	0	0	4
3 Khayla Pointer	G 40:00	9-19	1-2	1-1	1	5	6	1	5	20	7	0	2	0	1	9
45 Alexis Morris	G 40:00	9-18	5-7	2-4	0	4	4	1	3	25	2	1	2	0	0	9
32 Awa Trasi	07:14	0-1	0-0	0-0	0	0	0	0	0	0	1	0	0	0	0	2
20 Hannah Gusters	31:07	3-7	0-0	1-2	2	3	5	3	3	7	1	1	0	1	0	7
10 Ryan Payne	24:04	4-7	1-1	0-0	0	3	3	2	1	9	3	0	5	0	1	5
Team					0	3	3									
Totals		28-62	7-10	6-9	5	27	32	12	16	69	14	7	10	1	2	9

Shooting By Period			
1 st FG%	9.14	64.3%	
2 nd FG%	3.3	100.0%	
3 rd FG%	8.18	44.4%	
4 th FG%	6.16	37.5%	
GM FG%	28.62	45.2%	
3PT%	7-10	70.0%	
FT%	6-9	66.7%	

Technical Fouls: NONE

Dead Ball Rebounds: 1.0

LSU - 96

Record: 7-1

NO. Name	Min	FG	3P	FT	Rebounds		Fouls	TP	AS	TO	ST	Blocks			+/-	
					OR	DR						FF	PF	BS		BA
32 Awa Trasi	F 11:11	1-1	0-0	3-3	1	3	4	0	2	5	0	2	0	1	0	18
24 Faustine Aifuwa	C 11:55	7-9	0-0	1	2	3	1	1	14	0	0	0	1	0	0	23
3 Khayla Pointer	G 22:10	4-6	1-1	4-6	1	5	6	2	4	13	4	3	5	0	2	36
10 Ryan Payne	G 20:53	3-7	1-2	1-2	1	2	3	1	1	8	7	0	2	0	0	32
45 Alexis Morris	G 18:58	4-6	1-2	2-2	0	2	2	1	1	11	4	1	2	0	0	32
0 Autumn Newby	14:15	1-3	0-0	0-2	2	5	7	3	1	2	0	1	1	0	1	17
20 Hannah Gusters	14:59	4-5	0-0	1-2	2	1	3	0	1	9	1	1	0	1	1	22
21 Timia Ware	23:07	4-6	1-2	0-0	1	3	4	1	1	9	5	6	0	1	1	19
14 Sarah Shematsi	11:14	1-4	0-0	0-0	0	3	3	2	0	2	3	1	1	0	0	4
11 Emily Ward	12:15	1-3	0-0	0-0	1	0	1	0	1	2	0	0	0	0	0	1
15 Ajae Petty	13:50	1-2	0-0	3-4	1	5	6	1	2	5	0	1	1	1	0	1
23 Amari Bartlett	13:50	4-0	0-0	2-2	1	0	1	1	1	8	0	0	1	1	1	1
30 Grace Hall	11:23	2-2	2-2	2-2	0	1	1	0	2	8	2	1	0	0	0	5
Team					0	2	2									
Totals		36-58	6-9	18-26	13	35	48	13	18	96	26	18	13	7	7	41

Shooting By Period			
1 st FG%	5.12	41.7%	
2 nd FG%	8.13	61.5%	
3 rd FG%	13.19	68.4%	
4 th FG%	7.12	58.3%	
GM FG%	36.58	62.1%	
3PT%	6-9	66.7%	
FT%	18-26	69.2%	

Technical Fouls: NONE

Dead Ball Rebounds: 3.0

ISU	LSU	Points from Turnovers	Paint	Second Chance	Fast Breaks	Bench	Period by Period Scoring									
							1st	2nd	3rd	4th	TOT					
Biggest lead	1 (1 st 9:08)	12 (3 rd 1:47)	4	14	2	4										
Best Scoring Run	3 (4 th 8:49)	8 (3 rd 1:47)	20	34			18	16	12	16	60					
Lead Changes	6	2	1	4	8											
Times Tied	2						24	14	18	13	69					
Time with Lead	00:58	38:54														

ISU	LSU	Points from Turnovers <th rowspan="2">Paint <th rowspan="2">Second Chance <th rowspan="2">Fast Breaks <th rowspan="2">Bench</th> <th colspan="6">Period by Period Scoring</th> </th></th></th>	Paint <th rowspan="2">Second Chance <th rowspan="2">Fast Breaks <th rowspan="2">Bench</th> <th colspan="6">Period by Period Scoring</th> </th></th>	Second Chance <th rowspan="2">Fast Breaks <th rowspan="2">Bench</th> <th colspan="6">Period by Period Scoring</th> </th>	Fast Breaks <th rowspan="2">Bench</th> <th colspan="6">Period by Period Scoring</th>	Bench	Period by Period Scoring									
							1st	2nd	3rd	4th	TOT					
Biggest lead	1 (1 st 8:24)	44 (4 th 6:03)	16	25	18	48										
Best Scoring Run	8 (1 st 1:47)	21 (3 rd 6:48)	16	18	16	48										
Lead Changes	6	7	16	16	19	55										
Times Tied	1						18	31	28	19	96					
Time with Lead	01:03	38:13														



Alcorn - 36

Record: 0-8

NO. Name	Min	FG	3P	FT	Rebounds		Fouls	TP	AS	TO	ST	Blocks			+/-	
					OR	DR						FF	PF	BS		BA
42 Bria Broughton	C 27:59	1-4	0-0	1-1	2	2	2	2	2	1	2	0	0	0	0	-46
10 LaRae Rascoe	G 25:25	1-4	0-1	0-0	0	3	3	2	2	3	2	1	0	0	0	-33
14 Cayla Obilo	G 19:37	1-5														



Official Basketball Box Score - Final
Clemson at LSU
 12/20/21 Student Life Center, West Palm Beach
 2021-22 Women's Basketball

Game Time: 6:08 PM
 Game Duration: 2:04
 Attendance: 1,208

Officials:

Record: 6-5															
NO. Name	Min	FG	3P	FT	Rebounds		Fouls		TP	AS	TO	ST	Blocks		+/-
					OR	DR	PF	FD					BS	BA	
5 Aman Robinson	F 36:37	2-7	0-3	2-2	0	3	2	2	6	1	4	2	0	0	-13
12 Hannah Hank	C 12:59	2-3	1-2	0-0	2	0	2	5	2	5	0	0	2	0	0
00 Delcia Washington	G 32:36	5-14	0-1	2-2	1	9	10	3	5	12	3	1	0	1	-7
10 Gabby Elliott	G 30:01	2-10	0-0	0-0	1	3	4	5	0	4	1	3	0	0	-17
23 Kiara Lewis	G 32:09	5-12	0-0	3-4	1	1	2	3	5	13	1	6	2	0	0
22 Dalsha Bradford	G 23:11	3-4	1-1	2-2	0	2	2	1	2	9	0	2	0	0	-17
40 Latrese Saine	16:09	1-2	0-0	2-4	2	2	4	5	3	4	0	2	2	0	-12
1 Endo Inyang	11:15	0-1	0-0	0-0	1	1	4	0	0	0	0	1	0	1	-2
25 Sydney Standifer	01:13	1-1	1-1	0-0	0	0	0	0	0	3	0	0	0	0	0
15 Kionna Gaines	01:36	0-0	0-0	0-0	0	0	0	0	0	0	0	0	0	0	-1
3 MaKayla Elmore	00:37	0-0	0-0	0-0	0	0	0	0	0	0	0	0	0	0	-1
4 Weronika Hipp	01:12	0-0	0-0	0-0	0	0	0	0	0	0	0	0	0	0	2
30 Madi Ott	00:25	0-0	0-0	0-0	0	0	0	0	0	0	0	0	0	0	-1
Team					1	5	6			0	1				
Totals	21:54	3-8	11-14	8	26	34	29	19	56	5	21	8	2	3	-14

Technical Fouls: NONE

Shooting By Period		
1 st FG%	4-14	28.6%
3PT%	1-1	100.0%
FT%	3-4	75%
2 nd FG%	8-15	53.3%
3PT%	0-4	0.0%
FT%	0-0	0%
3 rd FG%	5-11	45.5%
3PT%	0-0	0.0%
FT%	3-4	75%
4 th FG%	4-14	28.6%
3PT%	2-3	66.7%
FT%	5-6	83.3%
GM FG%	21-54	38.9%
3PT%	3-8	37.5%
FT%	11-14	78.6%

Dead Ball Rebounds: 2/0



Official Basketball Box Score - Final
LSU at Texas Tech
 12/21/21 Student Life Center, West Palm Beach
 2021-22 Women's Basketball

Game Time: 3:30 PM
 Game Duration: 1:38
 Attendance: 915

Officials: Doug Knight, Maggie Troman, Kristen Bell

Record: 11-1															
NO. Name	Min	FG	3P	FT	Rebounds		Fouls		TP	AS	TO	ST	Blocks		+/-
					OR	DR	PF	FD					BS	BA	
0 Autumn Newby	F 35:14	4-10	0-0	4-4	7	5	12	3	3	12	0	1	1	1	0
24 Faustine Ailifu	G 24:48	5-9	0-0	0-0	5	3	8	2	0	10	0	3	0	0	12
1 Jalin Cherry	G 38:43	8-21	0-0	0-0	2	3	5	2	1	16	4	2	0	0	16
3 Khayla Pointer	G 36:59	8-14	1-4	2-6	2	5	7	2	5	19	7	1	0	0	13
45 Alexis Morris	G 27:05	6-12	0-1	1-1	0	2	2	2	2	13	6	1	1	0	1
10 Ryann Payne	14:06	2-4	0-0	0-0	0	3	3	1	4	2	1	2	0	0	4
32 Awa Trasi	16:53	0-4	0-0	0-0	2	3	5	2	1	0	0	1	0	0	0
14 Sarah Shematsi	03:07	0-0	0-0	0-0	1	1	0	0	0	0	0	0	0	0	5
21 Timia Ware	03:07	0-1	0-1	0-0	0	0	0	0	0	0	0	0	0	0	5
Team					2	1	3			0	1				
Totals	33:75	1-6	7-11	20	26	46	16	14	74	19	11	4	3	1	14

Technical Fouls: NONE

Shooting By Period		
1 st FG%	9-22	40.9%
3PT%	0-2	0.0%
FT%	2-2	100%
2 nd FG%	9-17	52.9%
3PT%	1-2	50.0%
FT%	0-0	0%
3 rd FG%	4-7	47.1%
3PT%	0-0	0.0%
FT%	5-7	71.4%
4 th FG%	7-19	36.8%
3PT%	0-2	0.0%
FT%	0-2	0%
GM FG%	33-75	44.0%
3PT%	1-6	16.7%
FT%	7-11	63.6%

Dead Ball Rebounds: 2/0

Record: 10-1															
NO. Name	Min	FG	3P	FT	Rebounds		Fouls		TP	AS	TO	ST	Blocks		+/-
					OR	DR	PF	FD					BS	BA	
0 Autumn Newby	F 31:29	3-4	0-0	1-1	2	0	2	1	2	7	0	0	1	0	0
24 Faustine Ailifu	C 27:34	4-8	0-0	5-10	3	8	11	5	7	13	0	0	1	2	1
1 Jalin Cherry	G 18:44	1-5	0-2	1-2	1	0	1	3	2	3	1	2	0	0	0
3 Khayla Pointer	G 37:30	6-15	0-4	8-15	1	5	6	2	10	20	8	6	1	0	1
45 Alexis Morris	G 38:32	4-11	1-5	3-3	2	4	6	3	3	12	5	1	3	0	15
10 Ryann Payne	23:08	3-10	2-5	0-0	1	2	3	1	2	8	0	5	3	1	0
21 Timia Ware	01:38	0-0	0-0	0-0	0	0	0	0	0	0	0	0	0	0	-5
32 Awa Trasi	20:57	3-3	0-0	1-2	2	3	5	4	3	7	0	3	1	0	12
14 Sarah Shematsi	00:28	0-2	0-2	0-0	0	0	0	0	0	0	0	0	0	0	0
Team					2	4	6			0	1				
Totals	24:58	3-18	19-33	14	26	40	19	29	70	16	17	12	3	2	14

Technical Fouls: NONE

Shooting By Period		
1 st FG%	6-14	42.9%
3PT%	1-2	50.0%
FT%	2-7	28.6%
2 nd FG%	4-18	22.2%
3PT%	0-10	0.0%
FT%	5-9	55.6%
3 rd FG%	7-15	46.7%
3PT%	2-4	50.0%
FT%	6-8	75%
4 th FG%	7-11	63.6%
3PT%	0-2	0.0%
FT%	5-9	66.7%
GM FG%	24-58	41.4%
3PT%	3-18	16.7%
FT%	19-33	57.6%

Dead Ball Rebounds: 8/0

Record: 7-4															
NO. Name	Min	FG	3P	FT	Rebounds		Fouls		TP	AS	TO	ST	Blocks		+/-
					OR	DR	PF	FD					BS	BA	
10 Bryn Gerlich	F 30:31	2-5	2-3	2-2	0	4	4	3	2	8	5	4	0	0	-18
24 Taylah Thomas	F 38:27	2-8	0-2	2-2	2	7	9	1	1	6	2	5	1	1	-17
1 Ella Tolafoano	C 18:42	3-4	0-0	0-0	1	3	4	3	0	6	1	1	1	0	0
4 Lexy Hightower	G 25:27	4-10	2-5	0-0	1	0	1	0	1	10	0	1	0	0	-8
32 Fatum Vaitenheimer	G 19:33	0-1	0-1	0-0	0	2	2	0	0	1	3	0	0	0	-7
5 Rhylic McKinney	23:14	5-8	1-2	3-4	0	0	0	3	14	2	1	0	0	0	-5
33 Chantae Embry	20:01	2-5	0-0	0-2	1	2	1	4	4	0	1	0	0	0	-1
0 Bre'Amber Scott	20:44	4-13	3-7	1-1	2	3	4	12	4	3	0	0	2	1	
11 Saga Ukkonen	03:21	0-0	0-0	0-0	0	1	1	0	1	0	0	0	0	0	-4
Team					1	4	5			0	0				
Totals	22:54	8-20	8-11	7	24	31	14	16	60	15	19	2	1	3	-14

Technical Fouls: NONE

Shooting By Period		
1 st FG%	4-12	33.3%
3PT%	2-5	40.0%
FT%	3-4	75%
2 nd FG%	6-12	50.0%
3PT%	0-3	0.0%
FT%	1-3	33.3%
3 rd FG%	7-18	38.9%
3PT%	4-7	57.1%
FT%	2-2	100%
4 th FG%	5-12	41.7%
3PT%	2-5	40.0%
FT%	2-2	100%
GM FG%	22-54	40.0%
3PT%	8-20	40.0%
FT%	8-11	72.7%

Dead Ball Rebounds: 2/0

CLM		LSU		Points from		Turnovers		Period by Period Scoring		
	1st	2nd	3rd	4th	TOT	1st	2nd	3rd	4th	TOT
Biggest lead	3 (2 nd 5:00)	18 (4 th 2:09)								
Best Scoring Run	7 (4 th 9:31)	10 (1 st 5:59)								
Lead Changes	4	7	19							
Times Tied	5									
Time with Lead	05:15	30:51								



Official Basketball Box Score - Final
Samford at LSU
 12/27/21 Moravich Assembly Center, Baton Rouge
 2021-22 Women's Basketball

Game Time: 6:00 PM
 Game Duration: 1:42
 Attendance: 6,614

Officials: Nykeshia Thompson, Eric Koch, Bill Laranca

Record: 4-9															
NO. Name	Min	FG	3P	FT	Rebounds		Fouls		TP	AS	TO	ST	Blocks		+/-
					OR	DR	PF	FD					BS	BA	
14 Annie Rami	F 22:13	1-2	0-1	2-2	1	2	3	2	4	4	3	0	1	0	-13
35 Sussy Nguelfac	F 27:18	7-12	0-0	4-8	5	3	8	3	5	18	1	1	1	1	-22
3 Shaunta Battle	G 26:40	1-9	1-6	0-0	0	5	5	0	0	3	1	2	0	0	-20
11 Andres Cournoyer	G 32:13	4-21	0-8	3-3	0	3	0	3	3	11	3				



Officials: Kevin Petrait, Nykesha Thompson, Timothy Greene

Box score table for Texas A&M - 66 vs LSU - 75. Includes columns for player name, number, minutes, field goals, 3-point shots, free throws, rebounds, assists, steals, blocks, and technical fouls.

Summary statistics for Texas A&M - 66, including Shooting By Period (FG, 3PT, FT), GM FG, 3PT, FT percentages, and Dead Ball Rebounds.

Box score table for LSU - 75 vs Texas A&M - 66. Includes columns for player name, number, minutes, field goals, 3-point shots, free throws, rebounds, assists, steals, blocks, and technical fouls.

Summary statistics for LSU - 75, including Shooting By Period (FG, 3PT, FT), GM FG, 3PT, FT percentages, and Dead Ball Rebounds.

Stat comparison table between TAM and LSU for metrics like Biggest Lead, Best Scoring Run, Lead Changes, Times Tied, and Time with Lead.



Officials: Denise Brooks, Sall Estro, Heynwa Seales

Box score table for LSU - 76 vs Auburn - 48. Includes columns for player name, number, minutes, field goals, 3-point shots, free throws, rebounds, assists, steals, blocks, and technical fouls.

Summary statistics for LSU - 76, including Shooting By Period (FG, 3PT, FT), GM FG, 3PT, FT percentages, and Dead Ball Rebounds.

Box score table for Auburn - 48 vs LSU - 76. Includes columns for player name, number, minutes, field goals, 3-point shots, free throws, rebounds, assists, steals, blocks, and technical fouls.

Summary statistics for Auburn - 48, including Shooting By Period (FG, 3PT, FT), GM FG, 3PT, FT percentages, and Dead Ball Rebounds.

Stat comparison table between LSU and Auburn for metrics like Biggest Lead, Best Scoring Run, Lead Changes, Times Tied, and Time with Lead.



Officials: Pulani Spurlock-Welsh, Billy Smith, Brian Garland

Box score table for South Carolina - 65 vs LSU - 75. Includes columns for player name, number, minutes, field goals, 3-point shots, free throws, rebounds, assists, steals, blocks, and technical fouls.

Box score table for LSU - 66 vs South Carolina - 65. Includes columns for player name, number, minutes, field goals, 3-point shots, free throws, rebounds, assists, steals, blocks, and technical fouls.

Stat comparison table between USC and LSU for metrics like Biggest Lead, Best Scoring Run, Lead Changes, Times Tied, and Time with Lead.



Officials: Dee Kanner, Michael McConnell, Karlena Tobin

Box score table for Missouri - 85 vs LSU - 75. Includes columns for player name, number, minutes, field goals, 3-point shots, free throws, rebounds, assists, steals, blocks, and technical fouls.

Box score table for LSU - 87 vs Missouri - 85. Includes columns for player name, number, minutes, field goals, 3-point shots, free throws, rebounds, assists, steals, blocks, and technical fouls.

Stat comparison table between MIZ and LSU for metrics like Biggest Lead, Best Scoring Run, Lead Changes, Times Tied, and Time with Lead.





Vanderbilt - 64 Record: 10-8 (1-3)

NO.	Name	Min	FG			3P		FT		Rebounds	Fouls	TP	AS	TO	ST	Blocks	+/-
			M/A	A/A	M/A	M/A	OR	DR	PF								
15	Britnae Alexander	F 29:20	8-19	3-8	5-5	2	1	3	5	4	24	1	1	2	0	0	-19
50	Kaylon Smith	F 33:42	5-12	1-2	0-0	4	3	7	2	2	11	3	2	2	1	1	-20
3	Jordyn Cambridge	G 20:14	2-7	0-1	1	2	3	2	1	4	2	3	2	2	0	0	-13
12	Demi Washington	G 32:36	1-10	0-0	1-3	4	3	7	1	4	3	1	0	0	0	1	-12
21	Bella LaChance	G 18:29	2-6	2-4	0-0	0	0	0	0	0	6	2	1	0	0	0	-1
23	Iyana Moore	G 33:14	6-15	2-6	0-0	1	6	7	1	2	14	3	5	4	0	0	-1
35	Sacha Washington	11:21	0-0	0-0	0-0	1	2	4	1	0	0	1	0	0	0	0	2
5	Yaubyron Chambers	14:01	0-0	0-0	0-0	1	2	2	0	0	0	1	0	0	0	0	-5
13	DeMauri Flournoy	08:03	1-5	0-3	0-0	1	0	1	0	2	0	1	0	0	0	0	1
Team						3	0	3	0	0	0	0	0	0	0	0	
Totals			25-74	8-24	6-9	18	17	35	18	14	84	12	15	10	1	4	-18

Shooting By Period
 1st FG% 6-16 37.5%
 3PT% 2-4 50.0%
 FT% 1-1 100%
 2nd FG% 7-17 41.2%
 3PT% 3-5 60.0%
 FT% 4-4 100%
 3rd FG% 4-20 20.0%
 3PT% 0-5 0.0%
 FT% 1-3 33.3%
 4th FG% 8-21 38.1%
 3PT% 3-10 30.0%
 FT% 0-1 0%

Technical Fouls: NONE
 GM FG% 25-74 33.8%
 3PT% 8-24 33.3%
 FT% 6-9 66.7%

LSU - 82 Record: 17-2 (5-1)

NO.	Name	Min	FG			3P		FT		Rebounds	Fouls	TP	AS	TO	ST	Blocks	+/-
			M/A	A/A	M/A	M/A	OR	DR	PF								
32	Awa Trasi	F 22:29	1-5	0-0	2-4	4	3	7	3	3	4	1	1	0	1	0	24
24	Faustine Ailiwa	C 29:00	10-12	0-0	1-1	3	4	7	3	2	20	2	3	1	1	0	25
1	Jalyn Cherry	G 38:38	5-10	0-0	2-4	2	7	9	1	2	12	8	2	2	0	0	25
3	Khayia Pointer	G 32:28	7-10	0-2	3-4	0	7	7	2	7	17	7	2	4	1	0	29
45	Alexis Morris	G 32:50	9-13	1-3	1-2	0	7	7	3	2	20	2	5	2	0	1	26
20	Hannah Gusters	13:57	0-3	0-0	0-0	2	2	2	0	0	1	1	0	0	0	0	-17
10	Ryann Payne	14:04	2-3	1-1	1-2	0	2	2	0	2	6	2	0	0	0	0	-7
21	Timia Ware	04:16	0-1	0-1	0-0	0	0	0	0	0	0	0	0	0	0	0	-10
14	Sarah Shematsi	09:29	1-3	1-2	0-0	0	1	1	0	0	3	0	1	1	1	0	1
23	Amani Bartlett	02:49	0-0	0-0	0-0	0	0	0	0	0	0	0	0	0	0	0	-6
Team						0	1	1	0	0	0	0	0	0	0	0	
Totals			35-60	3-9	9-17	9	34	43	14	18	82	23	15	10	4	1	18

Shooting By Period
 1st FG% 10-19 52.6%
 3PT% 0-3 0.0%
 FT% 1-2 50%
 2nd FG% 9-14 64.3%
 3PT% 2-2 100.0%
 FT% 2-5 40%
 3rd FG% 10-14 71.4%
 3PT% 0-1 0.0%
 FT% 3-4 75%
 4th FG% 6-13 46.2%
 3PT% 1-3 33.3%
 FT% 3-6 50%

Technical Fouls: NONE
 GM FG% 35-60 58.3%
 3PT% 3-9 33.3%
 FT% 9-17 52.9%

	VAN	LSU	Points from	VAN	LSU	Period by Period Scoring
			Turnovers	15	23	1st 2nd 3rd 4th TOT
Biggest lead		1 (1 st 8:17)		20	48	
Best Scoring Run		9 (4 th 0:16)		19	14	
Lead Changes		2		15	21	9 19 16 64
Times Tied		2		13	27	
Time with Lead	00:27	38:23		16	9	LSU 21 22 23 16 82



LSU - 76 Record: 17-4 (5-3)

NO.	Name	Min	FG			3P		FT		Rebounds	Fouls	TP	AS	TO	ST	Blocks	+/-
			M/A	A/A	M/A	M/A	OR	DR	PF								
0	Autumn Newby	F 27:54	6-8	0-0	3-4	4	5	9	2	5	15	1	3	0	0	-3	
24	Faustine Ailiwa	C 22:06	3-6	0-0	0-1	2	5	7	3	1	6	0	2	0	1	0	-15
1	Jalyn Cherry	C 24:25	3-9	0-0	0-0	2	1	3	1	0	6	2	4	0	0	1	-15
3	Khayia Pointer	G 37:05	4-12	1-4	4-6	0	5	5	3	3	13	7	4	0	0	1	-15
45	Alexis Morris	G 33:35	9-18	3-6	1-2	2	4	6	1	3	22	1	3	0	0	0	-6
10	Ryann Payne	18:01	3-7	0-2	3-4	0	1	1	4	2	9	1	2	0	0	0	-7
20	Hannah Gusters	08:47	1-3	0-0	0-0	1	0	0	1	0	2	0	0	0	1	0	-4
32	Awa Trasi	11:38	0-0	0-0	1-2	0	3	3	1	1	1	0	0	0	0	0	-14
21	Timia Ware	08:42	1-2	0-1	0-0	1	0	1	2	2	0	0	0	0	0	0	-6
14	Sarah Shematsi	07:47	0-2	0-1	0-0	0	1	1	2	0	0	0	0	0	0	0	8
Team						0	2	2	0	0	0	0	0	0	0	0	
Totals			30-67	4-14	12-19	12	27	39	19	16	76	12	16	3	3	1	-14

Shooting By Period
 1st FG% 7-17 41.2%
 3PT% 0-2 0.0%
 FT% 1-2 50%
 2nd FG% 5-13 38.5%
 3PT% 0-2 0.0%
 FT% 3-5 60%
 3rd FG% 6-17 35.3%
 3PT% 0-3 0.0%
 FT% 5-8 62.5%
 4th FG% 12-20 60.0%
 3PT% 4-7 57.1%
 FT% 3-4 75%

Technical Fouls: NONE
 GM FG% 30-67 44.8%
 3PT% 4-14 28.6%
 FT% 12-19 63.2%

Arkansas - 90 Record: 14-6 (4-3)

NO.	Name	Min	FG			3P		FT		Rebounds	Fouls	TP	AS	TO	ST	Blocks	+/-
			M/A	A/A	M/A	M/A	OR	DR	PF								
2	Samara Spencer	G 37:19	8-15	3-5	1-6	1	2	3	2	4	20	2	2	1	0	1	18
13	Sasha Goforth	G 21:26	2-6	0-1	0-0	0	3	3	3	1	4	3	0	1	1	0	14
23	Amber Ramirez	G 38:07	10-18	5-8	0-0	0	3	3	2	1	25	2	0	3	0	1	20
22	Jersey Wollenbarger	G 22:40	2-6	1-2	3-5	1	5	6	1	3	8	4	2	3	0	0	19
43	Makayla Daniels	G 38:18	5-9	3-6	7-8	1	4	5	3	7	20	4	4	2	0	1	16
4	Eryn Barnum	16:20	2-4	0-0	2-2	0	2	2	1	2	6	1	1	1	0	0	-1
11	Rylee Langerman	20:27	2-3	1-2	0-0	1	3	4	0	5	3	1	1	0	0	0	-4
22	Avery Hughes	01:38	0-1	0-1	0-0	0	0	0	0	0	0	0	0	0	0	0	-4
3	Elauna Eaton	01:00	0-0	0-0	0-0	0	0	0	0	0	0	0	0	0	0	0	-4
25	Destinee Oberg	01:00	0-0	0-0	0-0	0	0	0	0	0	0	0	0	0	0	0	-4
55	Ernie Ellis	01:00	0-0	0-0	2-2	0	0	0	0	1	2	0	0	0	0	0	-4
15	Ashlyn Sage	00:44	0-0	0-0	0-0	0	0	0	0	0	0	0	0	0	0	0	-4
Team						2	1	3	0	0	2	0	0	0	0	0	
Totals			31-62	13-25	15-23	6	23	29	16	19	90	19	12	12	1	3	14

Shooting By Period
 1st FG% 6-18 33.3%
 3PT% 3-8 37.5%
 FT% 1-1 100%
 2nd FG% 9-18 50.0%
 3PT% 3-7 42.9%
 FT% 2-5 40%
 3rd FG% 9-15 60.0%
 3PT% 5-7 71.4%
 FT% 3-3 100%
 4th FG% 7-11 63.6%
 3PT% 2-3 66.7%
 FT% 9-14 64.3%
 GM FG% 31-62 50.0%
 3PT% 13-25 52.0%
 FT% 15-23 65.2%

Technical Fouls: NONE
 Dead Ball Rebounds: 6.2

	LSU	ARK	Points from	LSU	ARK	Period by Period Scoring
			Turnovers	11 <th>20 <th>1st 2nd 3rd 4th TOT</th> </th>	20 <th>1st 2nd 3rd 4th TOT</th>	1st 2nd 3rd 4th TOT
Biggest lead		3 (1 st 2:01)		30	26	
Best Scoring Run		7 (1 st 2:01)		15	13	17 31 76
Lead Changes		6		8	8	LSU 15 13 17 31 76
Times Tied		2		11	12	
Time with Lead	01:48	35:35		14	13	ARK 16 23 26 25 90



LSU - 72 Record: 17-3 (5-2)

NO.	Name	Min	FG			3P		FT		Rebounds	Fouls	TP	AS	TO	ST	Blocks	+/-
			M/A	A/A	M/A	M/A	OR	DR	PF								
0	Autumn Newby	F 30:46	2-3	0-0	2-2	3	8	11	3	3	6	0	0	0	0	0	2
24	Faustine Ailiwa	C 25:44	3-5	0-0	0-0	1	4	5	2	2	6	2	3	0	1	0	-2
1	Jalyn Cherry	G 23:50	1-6	0-0	0	2	6	8	3	2	2	3	5	0	0	0	2
3	Khayia Pointer	G 40:00	11-27	1-6	12-15	0	1	1	0	8	35	1	4	3	1	2	-1
45	Alexis Morris	G 30:52	4-13	0-1	0-0	2											



Officials: Pulani Spurbock-Walsh, Angelica Saffren, Kevin Peñhler

LSU - 68
Record: 19-4 (7-3)
Table with columns: NO. Name, Min, FG, 3P, FT, Rebounds, Fouls, TP, AS, TO, ST, Blocks, +/-

Shooting By Period
1st FG% 7-19 36.8%
3PT% 0-0 0.0%
FT% 0-0 0.0%

Technical Fouls: NONE

Dead Ball Rebounds: 5, 0

Ole Miss - 64
Record: 18-6 (6-4)
Table with columns: NO. Name, Min, FG, 3P, FT, Rebounds, Fouls, TP, AS, TO, ST, Blocks, +/-

Shooting By Period
1st FG% 4-15 26.7%
3PT% 1-4 25.0%
FT% 0-0 0.0%

Technical Fouls: NONE

Dead Ball Rebounds: 4, 1

LSU OM
Biggest lead 12 (4th 5:19) 2 (1st 9:11)
Best Scoring Run 8 (1st 6:45) 8 (4th 0:44)
Lead Changes 3
Times Tied 2
Time with Lead 36:54 01:25

Points from LSU OM
Turnovers 18 10
Paint 38 28
Second Chance 11 12
Fast Breaks 10 5
Bench 2 32

Period by Period Scoring
LSU 14 13 24 17 68
OM 9 14 21 20 64



Officials: Roy Gulbeyan, Brian Garland, Maggie Tegen

Georgia - 67
Record: 17-6 (6-5)
Table with columns: NO. Name, Min, FG, 3P, FT, Rebounds, Fouls, TP, AS, TO, ST, Blocks, +/-

Shooting By Period
1st FG% 4-18 22.2%
3PT% 1-3 33.3%
FT% 2-2 100%

Technical Fouls: Morrison 3rd 6:08

Dead Ball Rebounds: 2, 0

LSU - 73
Record: 20-4 (8-3)
Table with columns: NO. Name, Min, FG, 3P, FT, Rebounds, Fouls, TP, AS, TO, ST, Blocks, +/-

Shooting By Period
1st FG% 9-18 50.0%
3PT% 2-2 100.0%
FT% 3-4 75%

Technical Fouls: NONE

Dead Ball Rebounds: 2, 0

UGA LSU
Biggest lead 0 (1st 10:00) 20 (3rd 5:48)
Best Scoring Run 6 (3rd 3:16) 9 (2nd 7:31)
Lead Changes 0
Times Tied 2
Time with Lead 00:00 38:50

Points from UGA LSU
Turnovers 14 6
Paint 14 12
Second Chance 3 13
Fast Breaks 13 2
Bench 34 4

Period by Period Scoring
UGA 11 10 24 22 67
LSU 23 14 19 17 73



Officials: Mark Zentz, Kevin Peñhler, Ashlee Goode

LSU - 71
Record: 22-4 (10-3)
Table with columns: NO. Name, Min, FG, 3P, FT, Rebounds, Fouls, TP, AS, TO, ST, Blocks, +/-

Shooting By Period
1st FG% 10-19 52.6%
3PT% 3-6 50.0%
FT% 0-0 0%

Technical Fouls: NONE

Dead Ball Rebounds: 1, 0

Mississippi St. - 59
Record: 15-10 (6-7)
Table with columns: NO. Name, Min, FG, 3P, FT, Rebounds, Fouls, TP, AS, TO, ST, Blocks, +/-

Shooting By Period
1st FG% 7-18 38.9%
3PT% 2-6 33.3%
FT% 0-0 0%

Technical Fouls: NONE

Dead Ball Rebounds: 1, 0

LSU MSU
Biggest lead 13 (2nd 6:33) 3 (1st 8:22)
Best Scoring Run 15 (4th 0:11) 9 (2nd 3:06)
Lead Changes 14
Times Tied 11
Time with Lead 25:29 08:20

Points from LSU MSU
Turnovers 11 14
Paint 26 34
Second Chance 6 5
Fast Breaks 10 14
Bench 8 2

Period by Period Scoring
LSU 23 11 13 24 71
MSU 16 15 18 10 59



TV/Radio Roster

0
Autumn Newby
F • 6-2 • Gr.
Lawrenceville, Georgia



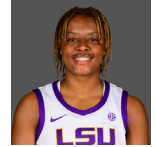
20
Hannah Gusters
C • 6-5 • Fr.
Dallas, Texas



1
Jailin Cherry
G • 5-8 • Gr.
Pascagoula, Mississippi



21
Timia Ware
G • 5-6 • Fr.
Chicago, Illinois



3
Khayla Pointer
G • 5-7 • Gr.
Birmingham, Alabama



23
Amani Bartlett
F • 6-3 • Fr.
Cleveland, Texas



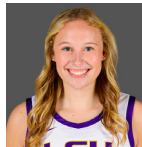
10
Ryann Payne
G • 6-0 • Jr.
Los Angeles, California



24
Fautine Aifuwa
C • 6-5 • Gr.
Dacula, Georgia



11
Emily Ward
G • 5-11 • So.
Bossier City, Louisiana



30
Grace Hall
F • 6-1 • Fr.
Chicago, Illinois



13
Logyn McNeil
F • 6-3 • Fr.
Rockwall, Texas



32
Awa Trasi
G/F • 6-1 • Sr.
Toulouse, France



14
Sarah Shematsi
G/F • 6-2 • Jr.
Annecy, France



45
Alexis Morris
G • 5-6 • Sr.
Beaumont, Texas



15
Ajae Petty
F • 6-3 • Fr.
Baltimore, Maryland



Kim Mulkey
Head Coach • 1st Season

