



Illinois St. at LSU

11/21/22 John Gray Gymnasium, George Town, Cayman Islands
2022-23 Men's Basketball

Officials: Doug Shows, Eric Curry, Bobby Daw

Illinois St. - 61

Record: 2-3

NO.	Name	F	Min	FG	3P	FT	Rebounds			Fouls		TP	AS	TO	ST	Blocks		+/-
				M-A	M-A	M-A	OR	DR	TOT	PF	FD					BS	BA	
13	Liam McChesney	F	19:46	3-8	1-6	0-0	0	2	2	3	2	7	2	1	1	0	0	-7
22	Kendall Lewis	F	31:23	2-5	0-2	5-6	1	1	2	2	4	9	2	7	0	2	0	-13
1	Malachi Poindexter	G	31:10	0-6	0-2	0-0	0	0	0	3	3	0	2	1	3	0	2	-18
10	Darius Burford	G	33:43	7-12	1-3	2-2	0	6	6	4	2	17	2	3	2	0	0	-10
15	Colton Sandage	G	28:31	4-8	3-6	1-2	0	1	1	2	1	12	1	3	1	0	0	-6
33	Joe Petrakis		13:10	1-5	0-3	0-0	2	0	2	3	1	2	0	1	0	1	0	-10
3	Seneca Knight		28:29	5-7	0-0	4-4	0	7	7	4	5	14	4	1	1	0	0	-6
50	Ryan Schmitt		02:02	0-0	0-0	0-0	0	0	0	2	0	0	0	2	0	0	0	-2
24	Jayden Johnson		06:17	0-0	0-0	0-0	0	1	1	1	0	0	0	0	0	0	0	-7
5	Alston Andrews		02:47	0-0	0-0	0-0	0	0	0	0	0	0	0	0	0	0	0	-4
23	Harouna Sissoko		02:42	0-1	0-0	0-0	0	0	0	0	0	0	0	0	0	0	1	3
Team							1	3	4			0		0				
Totals				22-52	5-22	12-14	4	21	25	24	18	61	13	19	8	3	3	-16

Shooting By Period		
1 st FG%	7-27	25.9%
3PT%	1-13	7.7%
FT%	3-4	75%
2 nd FG%	15-25	60.0%
3PT%	4-9	44.4%
FT%	9-10	90%
GM FG%	22-52	42.3%
3PT%	5-22	22.7%
FT%	12-14	85.7%

Dead Ball Rebounds: 2, 0

Technical Fouls: Sandage 2nd 17:01 Burford 2nd 0:20

LSU - 77

Record: 4-0

NO.	Name	F	Min	FG	3P	FT	Rebounds			Fouls		TP	AS	TO	ST	Blocks		+/-
				M-A	M-A	M-A	OR	DR	TOT	PF	FD					BS	BA	
5	Mwani Wilkinson	F	19:56	0-1	0-1	1-2	0	5	5	2	2	1	0	2	0	1	0	-1
12	KJ Williams	F	29:58	13-19	1-4	6-6	3	5	8	4	5	33	3	1	2	1	0	25
13	Jalen Reed	F	19:20	1-1	0-0	2-8	1	3	4	3	5	4	1	3	2	0	0	11
3	Justice Hill	G	29:05	1-9	0-1	2-2	0	1	1	1	2	4	5	1	1	0	2	14
41	Adam Miller	G	31:46	2-9	1-5	8-8	0	0	0	1	3	13	3	1	0	0	1	15
20	Derek Fountain		19:57	2-2	0-0	0-0	1	2	3	2	2	4	1	2	0	0	0	6
0	Trae Hannibal		14:31	0-2	0-0	0-0	1	3	4	3	1	0	4	3	0	0	0	7
1	Cam Hayes		21:07	3-5	1-3	3-4	0	3	3	2	3	10	0	5	2	0	0	10
4	Kendal Coleman		09:36	4-5	0-0	0-0	1	2	3	0	0	8	0	0	0	1	0	-6
15	Tyrell Ward		03:35	0-0	0-0	0-0	0	1	1	1	0	0	0	0	1	0	0	3
34	Shawn Phillips		01:09	0-0	0-0	0-0	0	0	0	0	0	0	0	0	0	0	0	-4
Team							2	1	3			0		0				
Totals				26-53	3-14	22-30	9	26	35	19	23	77	17	18	8	3	3	16

Shooting By Period		
1 st FG%	16-27	59.3%
3PT%	2-7	28.6%
FT%	11-15	73.3%
2 nd FG%	10-26	38.5%
3PT%	1-7	14.3%
FT%	11-15	73.3%
GM FG%	26-53	49.1%
3PT%	3-14	21.4%
FT%	22-30	73.3%

Dead Ball Rebounds: 5, 0

Technical Fouls: Hayes 2nd 0:20

	ILL	LSU
Biggest lead	1 (1 st 18:48)	27 (1 st 0:03)
Best Scoring Run	7 (2 nd 18:26)	13 (1 st 13:21)
Lead Changes	2	
Times Tied	0	
Time with Lead	01:04	38:52

	ILL	LSU
Points from		
Turnovers	12	16
Paint	32	40
Second Chance	4	12
Fast Breaks	17	6
Bench	16	22

	Period by Period Scoring		
	1st	2nd	TOT
ILL	18	43	61
LSU	45	32	77



Period 1

Quarter Starters:

ILL	1 Poindexter M	10 Burford D	13 McChesney L	15 Sandage C	22 Lewis K
LSU	3 Hill J	5 Wilkinson M	12 Williams K	13 Reed J	41 Miller A

Game Time	ILL	Score	Diff	LSU
20:00	13 MCCHESENEY L jumpball lost			12 WILLIAMS K jumpball won
19:56	1 POINDEXTER M foul shooting (1 - 1)			41 MILLER A foul drawn (1)
19:56		0-1	-1	41 MILLER A free throw 1 - 2 made (1)
19:56		0-2	-2	41 MILLER A free throw 2 - 2 made (2)
19:38	10 BURFORD D turnover travel (1)			
19:23				3 HILL J 2pt FG from turnover outside the paint, jump shot missed
19:21	10 BURFORD D defensive rebound (1)			
19:16	1 POINDEXTER M turnover bad pass (1)			3 HILL J steal (1)
18:58				12 WILLIAMS K 2pt FG from turnover outside the paint, hook shot missed
18:54	22 LEWIS K defensive rebound (1)			
18:48	10 BURFORD D 3pt FG , jump shot made (3)	3-2	1	
18:48	22 LEWIS K assist (1)			
18:35				13 REED J substitution out
18:35				20 FOUNTAIN D substitution in
18:27				20 FOUNTAIN D turnover out of bounds (1)
18:13	1 POINDEXTER M foul drawn (1)			3 HILL J foul personal (1 - 1)
17:56	15 SANDAGE C 3pt FG from turnover, jump shot missed			
17:51				5 WILKINSON M defensive rebound (1)
17:44		3-4	-1	41 MILLER A 2pt FG outside the paint, pull up jump shot made (4)
17:26	15 SANDAGE C 3pt FG , jump shot missed			
17:22				5 WILKINSON M defensive rebound (2)
17:13				12 WILLIAMS K 3pt FG , jump shot missed
17:09	defensive rebound (3)			
17:09	10 BURFORD D foul drawn (1)			20 FOUNTAIN D foul personal (1 - 2)
17:05	22 LEWIS K foul offensive (1 - 2)			20 FOUNTAIN D foul drawn (1)
17:05	22 LEWIS K turnover offensive (1)			
16:36	13 MCCHESENEY L foul shooting (1 - 3)			5 WILKINSON M foul drawn (1)
16:32		3-5	-2	5 WILKINSON M free throw 1 - 2 made (1)
16:32				5 WILKINSON M free throw 2 - 2 missed
16:31	10 BURFORD D defensive rebound (2)			
16:23	10 BURFORD D 2pt FG outside the paint, floating jump shot missed			
16:20				5 WILKINSON M defensive rebound (3)
16:15		3-7	-4	3 HILL J 2pt FG fast break in the paint, driving layup made (2)
15:57	22 LEWIS K turnover bad pass (2)			
15:55	Timeout media			
15:55				5 WILKINSON M substitution out
15:55				0 HANNIBAL T substitution in
15:48	10 BURFORD D foul shooting (1 - 4)			3 HILL J foul drawn (1)
15:48		3-8	-5	3 HILL J free throw 1 - 2 made (3)
15:48		3-9	-6	3 HILL J free throw 2 - 2 made (4)



Illinois St. at LSU

11/21/22 John Gray Gymnasium, George Town, Cayman Islands
2022-23 Men's Basketball

Officials: Doug Shows, Eric Curry, Bobby Daw

Game Time	ILL	Score	Diff	LSU
15:36	22 LEWIS K 2pt FG in the paint, layup missed			
15:32				20 FOUNTAIN D defensive rebound (1)
15:23	13 MCCHESENEY L substitution out			
15:23	33 PETRAKIS J substitution in			
15:12		3-11	-8	12 WILLIAMS K 2pt FG in the paint, floating jump shot made (2)
15:12				0 HANNIBAL T assist (1)
14:42	22 LEWIS K turnover lost ball (3)			
14:30		3-13	-10	12 WILLIAMS K 2pt FG from turnover outside the paint, hook shot made (4)
14:30				41 MILLER A assist (1)
14:11	1 POINDEXTER M 2pt FG outside the paint, jump shot blocked			
14:11				12 WILLIAMS K block (1)
14:08				defensive rebound (5)
14:06	Timeout 30 Sec			
14:06				3 HILL J substitution out
14:06				20 FOUNTAIN D substitution out
14:06				1 HAYES C substitution in
14:06				13 REED J substitution in
13:59	22 LEWIS K foul drawn (1)			13 REED J foul offensive (1 - 3)
13:59				13 REED J turnover offensive (1)
13:48	33 PETRAKIS J 3pt FG from turnover, jump shot missed			
13:45				0 HANNIBAL T defensive rebound (1)
13:36	22 LEWIS K foul personal (2 - 5)			13 REED J foul drawn (1)
13:32	15 SANDAGE C substitution out			
13:32	33 PETRAKIS J substitution out			
13:32	3 KNIGHT S substitution in			
13:32	50 SCHMITT R substitution in			
13:21	10 BURFORD D foul shooting (2 - 6)			12 WILLIAMS K foul drawn (1)
13:21		3-14	-11	12 WILLIAMS K free throw 1 - 2 made (5)
13:21		3-15	-12	12 WILLIAMS K free throw 2 - 2 made (6)
13:11	50 SCHMITT R foul offensive (1 - 7)			1 HAYES C foul drawn (1)
13:11	50 SCHMITT R turnover offensive (1)			
13:11	10 BURFORD D substitution out			
13:11	22 LEWIS K substitution out			
13:11	13 MCCHESENEY L substitution in			
13:11	24 JOHNSON J substitution in			
12:58	3 KNIGHT S foul shooting (1 - 8)			13 REED J foul drawn (2)
12:58				13 REED J free throw 1 - 2 missed
12:58				offensive dead ball rebound (1)
12:58				41 MILLER A substitution out
12:58				5 WILKINSON M substitution in
12:58				13 REED J free throw 2 - 2 missed
12:57	24 JOHNSON J defensive rebound (1)			
12:40	13 MCCHESENEY L 2pt FG in the paint, layup made (2)	5-15	-10	
12:40	3 KNIGHT S assist (1)			
12:27				13 REED J turnover bad pass (2)
12:27				13 REED J substitution out
12:27				20 FOUNTAIN D substitution in
12:07	13 MCCHESENEY L 3pt FG from turnover, jump shot missed			



Game Time	ILL	Score	Diff	LSU
12:03				0 HANNIBAL T defensive rebound (2)
11:57		5-17	-12	20 FOUNTAIN D 2pt FG in the paint, layup made (2)
11:57				0 HANNIBAL T assist (2)
11:30	50 SCHMITT R foul offensive (2 - 9)			5 WILKINSON M foul drawn (2)
11:30	50 SCHMITT R turnover offensive (2)			
11:30	Timeout media			
11:30	50 SCHMITT R substitution out			
11:30	5 ANDREWS A substitution in			
11:30				0 HANNIBAL T substitution out
11:30				12 WILLIAMS K substitution out
11:30				3 HILL J substitution in
11:30				4 COLEMAN K substitution in
11:16				3 HILL J 2pt FG from turnover outside the paint, floating jump shot missed
11:11	3 KNIGHT S defensive rebound (1)			
10:57	13 MCCHESENEY L 3pt FG , jump shot missed			
10:53				1 HAYES C defensive rebound (1)
10:47		5-19	-14	4 COLEMAN K 2pt FG in the paint, layup made (2)
10:47				20 FOUNTAIN D assist (1)
10:27	13 MCCHESENEY L foul drawn (1)			20 FOUNTAIN D foul personal (2 - 4)
10:27				20 FOUNTAIN D substitution out
10:27				12 WILLIAMS K substitution in
10:24	1 POINDEXTER M 3pt FG , jump shot missed			
10:22				12 WILLIAMS K defensive rebound (1)
10:04				12 WILLIAMS K 3pt FG , jump shot missed
10:01	3 KNIGHT S defensive rebound (2)			
09:41	3 KNIGHT S 2pt FG outside the paint, pull up jump shot missed			
09:37				5 WILKINSON M defensive rebound (4)
09:16		5-21	-16	1 HAYES C 2pt FG in the paint, floating jump shot made (2)
08:43	3 KNIGHT S foul drawn (1)			5 WILKINSON M foul personal (1 - 5)
08:43	1 POINDEXTER M substitution out			
08:43	5 ANDREWS A substitution out			
08:43	13 MCCHESENEY L substitution out			
08:43	24 JOHNSON J substitution out			
08:43	10 BURFORD D substitution in			
08:43	15 SANDAGE C substitution in			
08:43	22 LEWIS K substitution in			
08:43	33 PETRAKIS J substitution in			
08:43				1 HAYES C substitution out
08:43				5 WILKINSON M substitution out
08:43				0 HANNIBAL T substitution in
08:43				41 MILLER A substitution in
08:39	22 LEWIS K turnover bad pass (4)			12 WILLIAMS K steal (1)
08:21				12 WILLIAMS K 3pt FG from turnover, jump shot missed
08:17	defensive rebound (8)			
07:57	3 KNIGHT S foul drawn (2)			0 HANNIBAL T foul personal (1 - 6)
07:57	Timeout media			
07:53	3 KNIGHT S 2pt FG in the paint, step back jump shot missed			
07:48				4 COLEMAN K defensive rebound (1)



Illinois St. at LSU

11/21/22 John Gray Gymnasium, George Town, Cayman Islands
2022-23 Men's Basketball

Officials: Doug Shows, Eric Curry, Bobby Daw

Game Time	ILL	Score	Diff	LSU
07:46				0 HANNIBAL T 2pt FG in the paint, driving layup missed
07:44	10 BURFORD D defensive rebound (3)			
07:34	22 LEWIS K 2pt FG in the paint, layup made (2)	7-21	-14	
07:12		7-23	-16	12 WILLIAMS K 2pt FG outside the paint, hook shot made (8)
07:12				3 HILL J assist (1)
06:58	15 SANDAGE C 3pt FG , jump shot missed			
06:54				4 COLEMAN K defensive rebound (2)
06:39		7-25	-18	4 COLEMAN K 2pt FG in the paint, layup made (4)
06:39				12 WILLIAMS K assist (1)
06:23	33 PETRAKIS J 3pt FG , jump shot missed			
06:19				0 HANNIBAL T defensive rebound (3)
06:14				3 HILL J 2pt FG in the paint, layup blocked
06:14	33 PETRAKIS J block (1)			
06:10	3 KNIGHT S defensive rebound (3)			
06:05	3 KNIGHT S 2pt FG fast break in the paint, driving layup made (2)	9-25	-16	
05:46	15 SANDAGE C steal (1)			0 HANNIBAL T turnover bad pass (1)
05:43	15 SANDAGE C foul drawn (1)			0 HANNIBAL T foul shooting (2 - 7)
05:43	15 SANDAGE C free throw fast break 1 - 2 made (1)	10-25	-15	
05:43				0 HANNIBAL T substitution out
05:43				3 HILL J substitution out
05:43				4 COLEMAN K substitution out
05:43				1 HAYES C substitution in
05:43				5 WILKINSON M substitution in
05:43				13 REED J substitution in
05:43	15 SANDAGE C free throw fast break 2 - 2 missed			
05:42				12 WILLIAMS K defensive rebound (2)
05:16	33 PETRAKIS J foul shooting (1 - 10)			12 WILLIAMS K foul drawn (2)
05:16		10-26	-16	12 WILLIAMS K free throw 1 - 2 made (9)
05:16		10-27	-17	12 WILLIAMS K free throw 2 - 2 made (10)
04:50	15 SANDAGE C 2pt FG outside the paint, floating jump shot missed			
04:47				12 WILLIAMS K defensive rebound (3)
04:39				5 WILKINSON M 3pt FG , jump shot missed
04:37				12 WILLIAMS K offensive rebound (4)
04:35		10-29	-19	12 WILLIAMS K 2pt FG second chance in the paint, driving layup made (12)
04:27	10 BURFORD D 2pt FG in the paint, driving layup made (5)	12-29	-17	
04:09	3 KNIGHT S steal (1)			1 HAYES C turnover bad pass (1)
04:06	10 BURFORD D 3pt FG from turnover, pull up jump shot missed			
04:00				13 REED J defensive rebound (1)
04:00	Timeout media			
04:00	15 SANDAGE C substitution out			
04:00	1 POINDEXTER M substitution in			
03:49		12-32	-20	41 MILLER A 3pt FG , jump shot made (7)
03:49				12 WILLIAMS K assist (2)
03:27	1 POINDEXTER M 3pt FG , jump shot missed			
03:25				12 WILLIAMS K defensive rebound (5)
03:14		12-34	-22	13 REED J 2pt FG in the paint, dunk, made (2)
03:14				12 WILLIAMS K assist (3)



Illinois St. at LSU

11/21/22 John Gray Gymnasium, George Town, Cayman Islands
2022-23 Men's Basketball

Officials: Doug Shows, Eric Curry, Bobby Daw

Game Time	ILL	Score	Diff	LSU
02:51	22 LEWIS K 3pt FG , jump shot missed			
02:47	33 PETRAKIS J offensive rebound (1)			
02:46	33 PETRAKIS J 2pt FG second chance in the paint, layup missed			
02:40	33 PETRAKIS J offensive rebound (2)			
02:40	33 PETRAKIS J 2pt FG second chance in the paint, layup made (2)	14-34	-20	
02:26	3 KNIGHT S foul shooting (2 - 11)			13 REED J foul drawn (3)
02:26				13 REED J free throw 1 - 2 missed
02:26				offensive dead ball rebound (2)
02:26				5 WILKINSON M substitution out
02:26				15 WARD T substitution in
02:26		14-35	-21	13 REED J free throw 2 - 2 made (3)
02:04	22 LEWIS K foul drawn (2)			12 WILLIAMS K foul shooting (1 - 8)
02:04	22 LEWIS K free throw 1 - 2 made (3)	15-35	-20	
02:04	33 PETRAKIS J substitution out			
02:04	13 MCCHESENEY L substitution in			
02:04				1 HAYES C substitution out
02:04				3 HILL J substitution in
02:04	22 LEWIS K free throw 2 - 2 made (4)	16-35	-19	
01:38				41 MILLER A 3pt FG , jump shot missed
01:34	10 BURFORD D defensive rebound (4)			
01:30	13 MCCHESENEY L 3pt FG , jump shot missed			
01:27				15 WARD T defensive rebound (1)
01:20		16-38	-22	12 WILLIAMS K 3pt FG , jump shot made (15)
01:20				3 HILL J assist (2)
00:55	10 BURFORD D 2pt FG outside the paint, pull up jump shot made (7)	18-38	-20	
00:55	13 MCCHESENEY L assist (1)			
00:42				3 HILL J 2pt FG outside the paint, floating jump shot missed
00:39				12 WILLIAMS K offensive rebound (6)
00:39		18-40	-22	12 WILLIAMS K 2pt FG second chance in the paint, layup made (17)
00:39				Timeout 30 Sec
00:39	13 MCCHESENEY L substitution out			
00:39	33 PETRAKIS J substitution in			
00:19	10 BURFORD D turnover bad pass (2)			12 WILLIAMS K steal (2)
00:14		18-42	-24	12 WILLIAMS K 2pt FG fast break from turnover in the paint, layup made (19)
00:10	33 PETRAKIS J turnover bad pass (1)			15 WARD T steal (1)
00:03		18-44	-26	12 WILLIAMS K 2pt FG from turnover in the paint, layup made (21)
00:03				13 REED J assist (1)
00:03	33 PETRAKIS J foul shooting (2 - 12)			12 WILLIAMS K foul drawn (3)
00:03		18-45	-27	12 WILLIAMS K free throw 1 - 1 made (22)
00:00	1 POINDEXTER M 2pt FG outside the paint, pull up jump shot missed			
00:00	offensive dead ball rebound (1)			
END OF PERIOD				
ILL 18-45 LSU				



Illinois St. at LSU

11/21/22 John Gray Gymnasium, George Town, Cayman Islands
2022-23 Men's Basketball

Officials: Doug Shows, Eric Curry, Bobby Daw

Illinois St. - 18

NO.	Name	F	Min	FG			Rebounds			Fouls		TP	AS	TO	ST	Blocks		+/-
				M-A	M-A	M-A	OR	DR	TOT	PF	FD					BS	BA	
13	Liam McChesney	F	10:29	1-4	0-3	0-0	0	0	0	1	1	2	1	0	0	0	0	-12
22	Kendall Lewis	F	15:32	1-3	0-1	2-2	0	1	1	2	2	4	1	4	0	0	0	-23
1	Malachi Poindexter	G	15:17	0-4	0-2	0-0	0	0	0	1	1	0	0	1	0	0	1	-26
10	Darius Burford	G	15:32	3-5	1-2	0-0	0	4	4	2	1	7	0	2	0	0	0	-23
15	Colton Sandage	G	11:11	0-4	0-3	1-2	0	0	0	0	1	1	0	0	1	0	0	-11
33	Joe Petrakis		09:10	1-4	0-2	0-0	2	0	2	2	0	2	0	1	0	1	0	-13
3	Seneca Knight		13:32	1-3	0-0	0-0	0	3	3	2	2	2	1	0	1	0	0	-17
50	Ryan Schmitt		02:02	0-0	0-0	0-0	0	0	0	2	0	0	0	2	0	0	0	-2
24	Jayden Johnson		04:28	0-0	0-0	0-0	0	1	1	0	0	0	0	0	0	0	0	-4
5	Alston Andrews		02:47	0-0	0-0	0-0	0	0	0	0	0	0	0	0	0	0	0	-4
Team							0	2	2			0		0				
Totals				7-27	1-13	3-4	2	11	13	12	8	18	3	10	2	1	1	-27

Shooting By Period		
1st FG%	7-27	25.9%
3PT%	1-13	7.7%
FT%	3-4	75%
GM FG%	7-27	25.9%
3PT%	1-13	7.7%
FT%	3-4	75.0%

Dead Ball Rebounds: 1, 0

Technical Fouls::NONE

LSU - 45

NO.	Name	F	Min	FG			Rebounds			Fouls		TP	AS	TO	ST	Blocks		+/-
				M-A	M-A	M-A	OR	DR	TOT	PF	FD					BS	BA	
5	Mwani Wilkinson	F	11:37	0-1	0-1	1-2	0	4	4	1	2	1	0	0	0	0	0	13
12	KJ Williams	F	18:57	8-12	1-4	5-5	2	4	6	1	3	22	3	0	2	1	0	25
13	Jalen Reed	F	08:47	1-1	0-0	1-4	0	1	1	1	3	3	1	2	0	0	0	11
3	Justice Hill	G	13:45	1-5	0-0	2-2	0	0	0	1	1	4	2	0	1	0	1	20
41	Adam Miller	G	15:45	2-3	1-2	2-2	0	0	0	0	1	7	1	0	0	0	0	23
20	Derek Fountain		06:29	1-1	0-0	0-0	0	1	1	2	1	2	1	1	0	0	0	15
0	Trae Hannibal		07:25	0-1	0-0	0-0	0	3	3	2	0	0	2	1	0	0	0	7
1	Cam Hayes		09:02	1-1	0-0	0-0	0	1	1	0	1	2	0	1	0	0	0	11
4	Kendal Coleman		05:47	2-2	0-0	0-0	0	2	2	0	0	4	0	0	0	0	0	3
15	Tyrell Ward		02:26	0-0	0-0	0-0	0	1	1	0	0	0	0	0	1	0	0	7
Team							0	1	1			0		0				
Totals				16-27	2-7	11-15	2	18	20	8	12	45	10	5	4	1	1	27

Shooting By Period		
1st FG%	16-27	59.3%
3PT%	2-7	28.6%
FT%	11-15	73.3%
GM FG%	16-27	59.3%
3PT%	2-7	28.6%
FT%	11-15	73.3%

Dead Ball Rebounds: 2, 0

Technical Fouls::NONE

	ILL	LSU
Biggest lead	1 (1st 18:48)	27 (1st 0:03)
Best Scoring Run	3 (1st 18:48)	13 (1st 13:21)
Lead Changes	2	
Times Tied	0	
Time with Lead	01:04	18:52

Points from	ILL	LSU
Turnovers	1	10
Paint	10	22
Second Chance	2	4
Fast Breaks	3	4
Bench	4	8

	Period by Period Scoring		
	1st	2nd	TOT
ILL	18	43	61
LSU	45	32	77



Period 2

Quarter Starters:

ILL	1 Poindexter M	3 Knight S	10 Burford D	15 Sandage C	22 Lewis K
LSU	3 Hill J	5 Wilkinson M	12 Williams K	13 Reed J	41 Miller A

Game Time	ILL	Score	Diff	LSU
20:00	33 PETRAKIS J substitution out			
20:00	15 SANDAGE C substitution in			
20:00				15 WARD T substitution out
20:00				5 WILKINSON M substitution in
19:54	15 SANDAGE C 3pt FG , jump shot made (4)	21-45	-24	
19:54	3 KNIGHT S assist (2)			
19:32		21-47	-26	12 WILLIAMS K 2pt FG in the paint, layup made (24)
19:32				3 HILL J assist (3)
19:20	10 BURFORD D foul drawn (2)			41 MILLER A foul shooting (1 - 1)
19:20	10 BURFORD D free throw 1 - 2 made (8)	22-47	-25	
19:20	10 BURFORD D free throw 2 - 2 made (9)	23-47	-24	
19:04				12 WILLIAMS K 2pt FG outside the paint, turnaround jump shot missed
19:01	10 BURFORD D defensive rebound (5)			
18:56	15 SANDAGE C 3pt FG , jump shot made (7)	26-47	-21	
18:56	10 BURFORD D assist (1)			
18:38				5 WILKINSON M turnover bad pass (1)
18:26	10 BURFORD D 2pt FG from turnover in the paint, driving layup made (11)	28-47	-19	
18:24				Timeout 30 Sec
18:24				Timeout media
18:24				5 WILKINSON M substitution out
18:24				0 HANNIBAL T substitution in
18:04				12 WILLIAMS K 2pt FG in the paint, hook shot missed
18:00				12 WILLIAMS K offensive rebound (7)
17:56				41 MILLER A 3pt FG second chance, jump shot missed
17:52				0 HANNIBAL T offensive rebound (4)
17:42		28-49	-21	12 WILLIAMS K 2pt FG second chance in the paint, driving layup made (26)
17:42				0 HANNIBAL T assist (3)
17:40	3 KNIGHT S foul shooting (3 - 1)			12 WILLIAMS K foul drawn (4)
17:40	10 BURFORD D substitution out			
17:40	24 JOHNSON J substitution in			
17:40		28-50	-22	12 WILLIAMS K free throw 1 - 1 made (27)
17:26	22 LEWIS K 3pt FG , jump shot missed			
17:23				13 REED J defensive rebound (2)
17:15				13 REED J turnover travel (3)
17:01	15 SANDAGE C foul class B technical (0 - 1)			
17:01	15 SANDAGE C turnover offensive (1)			
16:59		28-51	-23	41 MILLER A free throw 1 - 1 made (8)
16:36	24 JOHNSON J foul personal (1 - 2)			0 HANNIBAL T foul drawn (1)
16:33		28-53	-25	12 WILLIAMS K 2pt FG in the paint, turnaround jump shot made (29)
16:33				3 HILL J assist (4)



Illinois St. at LSU

11/21/22 John Gray Gymnasium, George Town, Cayman Islands
2022-23 Men's Basketball

Officials: Doug Shows, Eric Curry, Bobby Daw

Game Time	ILL	Score	Diff	LSU
16:11	3 KNIGHT S foul drawn (3)			13 REED J foul personal (2 - 2)
16:11	24 JOHNSON J substitution out			
16:11	10 BURFORD D substitution in			
16:11				13 REED J substitution out
16:11				20 FOUNTAIN D substitution in
16:08	15 SANDAGE C 2pt FG in the paint, driving layup made (9)	30-53	-23	
15:49		30-55	-25	12 WILLIAMS K 2pt FG in the paint, layup made (31)
15:49				0 HANNIBAL T assist (4)
15:35	10 BURFORD D 2pt FG outside the paint, jump shot missed			
15:31	22 LEWIS K offensive rebound (2)			
15:28	22 LEWIS K turnover bad pass (5)			
15:28	Timeout media			
15:12	10 BURFORD D steal (1)			0 HANNIBAL T turnover lost ball (2)
15:08	10 BURFORD D 2pt FG fast break from turnover in the paint, driving layup made (13)	32-55	-23	
14:55				3 HILL J 2pt FG in the paint, layup blocked
14:55	22 LEWIS K block (1)			
14:54				offensive rebound (24)
14:52	10 BURFORD D steal (2)			20 FOUNTAIN D turnover bad pass (2)
14:47	3 KNIGHT S 2pt FG fast break from turnover in the paint, layup made (4)	34-55	-21	
14:47	10 BURFORD D assist (2)			
14:29				41 MILLER A 2pt FG in the paint, driving layup missed
14:26	10 BURFORD D defensive rebound (6)			
14:15	3 KNIGHT S turnover lost ball (1)			
14:14	22 LEWIS K substitution out			
14:14	13 MCCHESENEY L substitution in			
14:00				3 HILL J 2pt FG from turnover outside the paint, pull up jump shot missed
13:56				offensive dead ball rebound (3)
13:56	13 MCCHESENEY L foul loose ball (2 - 3)			12 WILLIAMS K foul drawn (5)
13:56				3 HILL J substitution out
13:56				1 HAYES C substitution in
13:56	3 KNIGHT S foul personal (4 - 4)			20 FOUNTAIN D foul drawn (2)
13:52	1 POINDEXTER M steal (1)			1 HAYES C turnover bad pass (2)
13:52	1 POINDEXTER M foul drawn (2)			12 WILLIAMS K foul personal (2 - 3)
13:40	15 SANDAGE C turnover lost ball (2)			1 HAYES C steal (1)
13:36		34-57	-23	1 HAYES C 2pt FG fast break from turnover in the paint, driving layup made (4)
13:20	13 MCCHESENEY L turnover lost ball (1)			1 HAYES C steal (2)
13:15				41 MILLER A 3pt FG from turnover, jump shot missed
13:07				offensive rebound (25)
13:07	3 KNIGHT S substitution out			
13:07	23 SISSOKO H substitution in			
13:05	15 SANDAGE C foul shooting (1 - 5)			41 MILLER A foul drawn (2)
13:05		34-58	-24	41 MILLER A free throw 1 - 3 made (9)
13:05		34-59	-25	41 MILLER A free throw 2 - 3 made (10)
13:05				12 WILLIAMS K substitution out
13:05				4 COLEMAN K substitution in
13:05		34-60	-26	41 MILLER A free throw 3 - 3 made (11)



Illinois St. at LSU

11/21/22 John Gray Gymnasium, George Town, Cayman Islands
2022-23 Men's Basketball

Officials: Doug Shows, Eric Curry, Bobby Daw

Game Time	ILL	Score	Diff	LSU
12:51	15 SANDAGE C 3pt FG , jump shot made (12)	37-60	-23	
12:51	13 MCCHESENEY L assist (2)			
12:27	1 POINDEXTER M foul drawn (3)			0 HANNIBAL T foul offensive (3 - 4)
12:27				0 HANNIBAL T turnover offensive (3)
12:27				0 HANNIBAL T substitution out
12:27				5 WILKINSON M substitution in
12:14	23 SISSOKO H 2pt FG from turnover in the paint, layup blocked			
12:14				4 COLEMAN K block (1)
12:09				1 HAYES C defensive rebound (2)
12:00	13 MCCHESENEY L steal (1)			41 MILLER A turnover bad pass (1)
11:57	13 MCCHESENEY L 2pt FG fast break from turnover in the paint, dunk, made (4)	39-60	-21	
11:38				4 COLEMAN K 2pt FG in the paint, layup missed
11:36				4 COLEMAN K offensive rebound (3)
11:35		39-62	-23	4 COLEMAN K 2pt FG second chance in the paint, layup made (6)
11:19	13 MCCHESENEY L 3pt FG , jump shot made (7)	42-62	-20	
11:19	1 POINDEXTER M assist (1)			
10:53		42-64	-22	4 COLEMAN K 2pt FG in the paint, layup made (8)
10:53				41 MILLER A assist (2)
10:39	10 BURFORD D 2pt FG in the paint, layup made (15)	44-64	-20	
10:25				1 HAYES C turnover lost ball (3)
10:25	Timeout media			
10:25	23 SISSOKO H substitution out			
10:25	22 LEWIS K substitution in			
10:25				4 COLEMAN K substitution out
10:25				20 FOUNTAIN D substitution out
10:25				41 MILLER A substitution out
10:25				3 HILL J substitution in
10:25				12 WILLIAMS K substitution in
10:25				13 REED J substitution in
10:18	10 BURFORD D turnover lost ball (3)			13 REED J steal (1)
09:57	13 MCCHESENEY L foul drawn (2)			12 WILLIAMS K foul offensive (3 - 5)
09:57				12 WILLIAMS K turnover offensive (1)
09:48	13 MCCHESENEY L 3pt FG from turnover, jump shot missed			
09:44				5 WILKINSON M defensive rebound (5)
09:36	10 BURFORD D foul personal (3 - 6)			3 HILL J foul drawn (2)
09:28	13 MCCHESENEY L foul personal (3 - 7)			1 HAYES C foul drawn (2)
09:28		44-65	-21	1 HAYES C 1&1 free throw 1 made (5)
09:27				1 HAYES C 1&1 free throw 2 missed
09:24				13 REED J offensive rebound (3)
09:24	jump ball situation			
09:24	13 MCCHESENEY L substitution out			
09:24	33 PETRAKIS J substitution in			
09:20		44-68	-24	1 HAYES C 3pt FG , jump shot made (8)
09:20				3 HILL J assist (5)
09:01	15 SANDAGE C turnover lost ball (3)			13 REED J steal (2)
08:55	1 POINDEXTER M steal (2)			3 HILL J turnover bad pass (1)
08:51	33 PETRAKIS J foul drawn (1)			12 WILLIAMS K foul personal (4 - 6)
08:51				12 WILLIAMS K substitution out



Illinois St. at LSU

11/21/22 John Gray Gymnasium, George Town, Cayman Islands
2022-23 Men's Basketball

Officials: Doug Shows, Eric Curry, Bobby Daw

Game Time	ILL	Score	Diff	LSU
08:51				20 FOUNTAIN D substitution in
08:51	22 LEWIS K turnover bad pass (6)			
08:28				1 HAYES C turnover bad pass (4)
08:19	22 LEWIS K foul drawn (3)			13 REED J foul shooting (3 - 7)
08:19	22 LEWIS K free throw 1 - 2 missed			
08:19	offensive dead ball rebound (2)			
08:19	22 LEWIS K free throw 2 - 2 made (5)	45-68	-23	
08:04	33 PETRAKIS J foul shooting (3 - 8)			13 REED J foul drawn (4)
08:04				13 REED J free throw 1 - 2 missed
08:04				offensive dead ball rebound (4)
08:04	15 SANDAGE C substitution out			
08:04	3 KNIGHT S substitution in			
08:04				13 REED J free throw 2 - 2 missed
08:03	3 KNIGHT S defensive rebound (4)			
07:54	33 PETRAKIS J 3pt FG , jump shot missed			
07:51				3 HILL J defensive rebound (1)
07:43				3 HILL J 2pt FG in the paint, floating jump shot missed
07:40	3 KNIGHT S defensive rebound (5)			
07:35	3 KNIGHT S foul drawn (4)			5 WILKINSON M foul shooting (2 - 8)
07:35	3 KNIGHT S free throw 1 - 2 made (5)	46-68	-22	
07:35	3 KNIGHT S free throw 2 - 2 made (6)	47-68	-21	
07:35	Timeout media			
07:35				1 HAYES C substitution out
07:35				41 MILLER A substitution in
07:14	1 POINDEXTER M steal (3)			5 WILKINSON M turnover bad pass (2)
07:10	1 POINDEXTER M 2pt FG from turnover in the paint, driving layup blocked			
07:10				5 WILKINSON M block (1)
07:10	offensive rebound (19)			
07:04	3 KNIGHT S 2pt FG from turnover second chance in the paint, driving layup made (8)	49-68	-19	
07:04	1 POINDEXTER M assist (2)			
06:31				41 MILLER A 2pt FG outside the paint, pull up jump shot missed
06:29				20 FOUNTAIN D offensive rebound (2)
06:14				3 HILL J 3pt FG second chance, jump shot missed
06:08	3 KNIGHT S defensive rebound (6)			
06:06	3 KNIGHT S 2pt FG fast break in the paint, dunk, made (10)	51-68	-17	
06:06	22 LEWIS K assist (2)			
05:44	1 POINDEXTER M foul personal (2 - 9)			41 MILLER A foul drawn (3)
05:44				5 WILKINSON M substitution out
05:44				1 HAYES C substitution in
05:44		51-69	-18	41 MILLER A 1&1 free throw 1 made (12)
05:44	33 PETRAKIS J substitution out			
05:44	15 SANDAGE C substitution in			
05:44		51-70	-19	41 MILLER A 1&1 free throw 2 made (13)
05:23	1 POINDEXTER M 2pt FG in the paint, driving layup missed			
05:19				13 REED J defensive rebound (4)
05:02	1 POINDEXTER M foul personal (3 - 10)			1 HAYES C foul drawn (3)
05:02		51-71	-20	1 HAYES C free throw 1 - 2 made (9)
05:02		51-72	-21	1 HAYES C free throw 2 - 2 made (10)



Illinois St. at LSU

11/21/22 John Gray Gymnasium, George Town, Cayman Islands
2022-23 Men's Basketball

Officials: Doug Shows, Eric Curry, Bobby Daw

Game Time	ILL	Score	Diff	LSU
04:52	10 BURFORD D 2pt FG in the paint, driving layup missed			
04:50				20 FOUNTAIN D defensive rebound (3)
04:27	15 SANDAGE C foul personal (2 - 11)			13 REED J foul drawn (5)
04:27				13 REED J free throw 1 - 2 missed
04:27				offensive dead ball rebound (5)
04:27	1 POINDEXTER M substitution out			
04:27	13 MCCHESENEY L substitution in			
04:27		51-73	-22	13 REED J free throw 2 - 2 made (4)
04:18	13 MCCHESENEY L 3pt FG , jump shot missed			
04:14				1 HAYES C defensive rebound (3)
03:48				1 HAYES C 3pt FG , pull up jump shot missed
03:45	13 MCCHESENEY L defensive rebound (1)			
03:41	3 KNIGHT S foul drawn (5)			1 HAYES C foul shooting (1 - 9)
03:41	Timeout media			
03:41				13 REED J substitution out
03:41				12 WILLIAMS K substitution in
03:41	3 KNIGHT S free throw fast break 1 - 2 made (11)	52-73	-21	
03:41	3 KNIGHT S free throw fast break 2 - 2 made (12)	53-73	-20	
03:20				41 MILLER A 3pt FG , jump shot blocked
03:20	22 LEWIS K block (2)			
03:17	defensive rebound (22)			
03:08	22 LEWIS K 2pt FG in the paint, dunk, made (7)	55-73	-18	
03:08	3 KNIGHT S assist (3)			
02:47		55-75	-20	12 WILLIAMS K 2pt FG in the paint, turnaround jump shot made (33)
02:47				41 MILLER A assist (3)
02:36	22 LEWIS K turnover bad pass (7)			
02:14				41 MILLER A 2pt FG from turnover in the paint, driving layup missed
02:10	3 KNIGHT S defensive rebound (7)			
02:07	10 BURFORD D 2pt FG fast break in the paint, driving layup made (17)	57-75	-18	
02:07	3 KNIGHT S assist (4)			
01:37		57-77	-20	20 FOUNTAIN D 2pt FG in the paint, driving layup made (4)
01:26	10 BURFORD D 3pt FG , pull up jump shot missed			
01:23				12 WILLIAMS K defensive rebound (8)
01:09				Timeout 30 Sec
01:09				3 HILL J substitution out
01:09				12 WILLIAMS K substitution out
01:09				20 FOUNTAIN D substitution out
01:09				41 MILLER A substitution out
01:09				0 HANNIBAL T substitution in
01:09				4 COLEMAN K substitution in
01:09				15 WARD T substitution in
01:09				34 PHILLIPS S substitution in
00:57				1 HAYES C 3pt FG , jump shot missed
00:53	15 SANDAGE C defensive rebound (1)			
00:50	3 KNIGHT S 2pt FG fast break in the paint, layup made (14)	59-77	-18	
00:50	15 SANDAGE C assist (1)			



Illinois St. at LSU

11/21/22 John Gray Gymnasium, George Town, Cayman Islands
2022-23 Men's Basketball

Officials: Doug Shows, Eric Curry, Bobby Daw

Game Time	ILL	Score	Diff	LSU
00:25				0 HANNIBAL T 2pt FG outside the paint, pull up jump shot missed
00:22	13 MCCHESENEY L defensive rebound (2)			
00:20	22 LEWIS K foul drawn (4)			15 WARD T foul shooting (1 - 10)
00:20	10 BURFORD D foul class A technical (4 - 12)			
00:20				1 HAYES C foul class A technical (2 - 11)
00:20				1 HAYES C turnover offensive (5)
00:20	10 BURFORD D substitution out			
00:20	1 POINDEXTER M substitution in			
00:20	22 LEWIS K free throw 1 - 2 made (8)	60-77	-17	
00:20	15 SANDAGE C substitution out			
00:20	24 JOHNSON J substitution in			
00:20	22 LEWIS K free throw 2 - 2 made (9)	61-77	-16	
00:20	22 LEWIS K substitution out			
00:20	33 PETRAKIS J substitution in			
END OF GAME				
ILL 61-77 LSU				



Illinois St. at LSU

11/21/22 John Gray Gymnasium, George Town, Cayman Islands
2022-23 Men's Basketball

Officials: Doug Shows, Eric Curry, Bobby Daw

Illinois St. - 43

NO.	Name	F	Min	FG			Rebounds			Fouls		TP	AS	TO	ST	Blocks		+/-
				M-A	M-A	M-A	OR	DR	TOT	PF	FD					BS	BA	
13	Liam McChesney	F	09:17	2-4	1-3	0-0	0	2	2	2	1	5	1	1	1	0	0	5
22	Kendall Lewis	F	15:51	1-2	0-1	3-4	1	0	1	0	2	5	1	3	0	2	0	10
1	Malachi Poindexter	G	15:53	0-2	0-0	0-0	0	0	0	2	2	0	2	0	3	0	1	8
10	Darius Burford	G	18:11	4-7	0-1	2-2	0	2	2	2	1	10	2	1	2	0	0	13
15	Colton Sandage	G	17:20	4-4	3-3	0-0	0	1	1	2	0	11	1	3	0	0	0	5
24	Jayden Johnson		01:49	0-0	0-0	0-0	0	0	0	1	0	0	0	0	0	0	0	-3
23	Harouna Sissoko		02:42	0-1	0-0	0-0	0	0	0	0	0	0	0	0	0	0	1	3
33	Joe Petrakis		04:00	0-1	0-1	0-0	0	0	0	1	1	0	0	0	0	0	0	3
3	Seneca Knight		14:57	4-4	0-0	4-4	0	4	4	2	3	12	3	1	0	0	0	11
Team							1	1	2			0		0				
Totals				15-25	4-9	9-10	2	10	12	12	10	43	10	9	6	2	2	11

Shooting By Period		
2 nd FG%	15-25	60.0%
3PT%	4-9	44.4%
FT%	9-10	90%
GM FG%	15-25	60.0%
3PT%	4-9	44.4%
FT%	9-10	90.0%

Dead Ball Rebounds: 1, 0

Technical Fouls: Sandage 2nd17:01 Burford 2nd0:20

LSU - 32

NO.	Name	F	Min	FG			Rebounds			Fouls		TP	AS	TO	ST	Blocks		+/-
				M-A	M-A	M-A	OR	DR	TOT	PF	FD					BS	BA	
5	Mwani Wilkinson	F	08:19	0-0	0-0	0-0	0	1	1	1	0	0	0	2	0	1	0	-14
12	KJ Williams	F	11:01	5-7	0-0	1-1	1	1	2	3	2	11	0	1	0	0	0	0
13	Jalen Reed	F	10:33	0-0	0-0	1-4	1	2	3	2	2	1	0	1	2	0	0	0
3	Justice Hill	G	15:20	0-4	0-1	0-0	0	1	1	0	1	0	3	1	0	0	1	-6
41	Adam Miller	G	16:01	0-6	0-3	6-6	0	0	0	1	2	6	2	1	0	0	1	-8
0	Trae Hannibal		07:06	0-1	0-0	0-0	1	0	1	1	1	0	2	2	0	0	0	0
20	Derek Fountain		13:28	1-1	0-0	0-0	1	1	2	0	1	2	0	1	0	0	0	-9
1	Cam Hayes		12:05	2-4	1-3	3-4	0	2	2	2	2	8	0	4	2	0	0	-1
4	Kendal Coleman		03:49	2-3	0-0	0-0	1	0	1	0	0	4	0	0	0	1	0	-9
15	Tyrell Ward		01:09	0-0	0-0	0-0	0	0	0	1	0	0	0	0	0	0	0	-4
34	Shawn Phillips		01:09	0-0	0-0	0-0	0	0	0	0	0	0	0	0	0	0	0	-4
Team							2	0	2			0		0				
Totals				10-26	1-7	11-15	7	8	15	11	11	32	7	13	4	2	2	-11

Shooting By Period		
2 nd FG%	10-26	38.5%
3PT%	1-7	14.3%
FT%	11-15	73.3%
GM FG%	10-26	38.5%
3PT%	1-7	14.3%
FT%	11-15	73.3%

Dead Ball Rebounds: 3, 0

Technical Fouls: Hayes 2nd0:20

	ILL	LSU
Biggest lead	0 (1 st 20:00)	26 (2 nd 19:32)
Best Scoring Run	7 (2 nd 18:26)	6 (2 nd 16:33)
Lead Changes	0	
Times Tied	0	
Time with Lead	00:00	19:54

	ILL	LSU
Points from		
Turnovers	11	6
Paint	22	18
Second Chance	2	8
Fast Breaks	14	2
Bench	12	14

	Period by Period Scoring		
	1st	2nd	TOT
ILL	18	43	61
LSU	45	32	77



Illinois St. at LSU

11/21/22 John Gray Gymnasium, George Town, Cayman Islands
2022-23 Men's Basketball

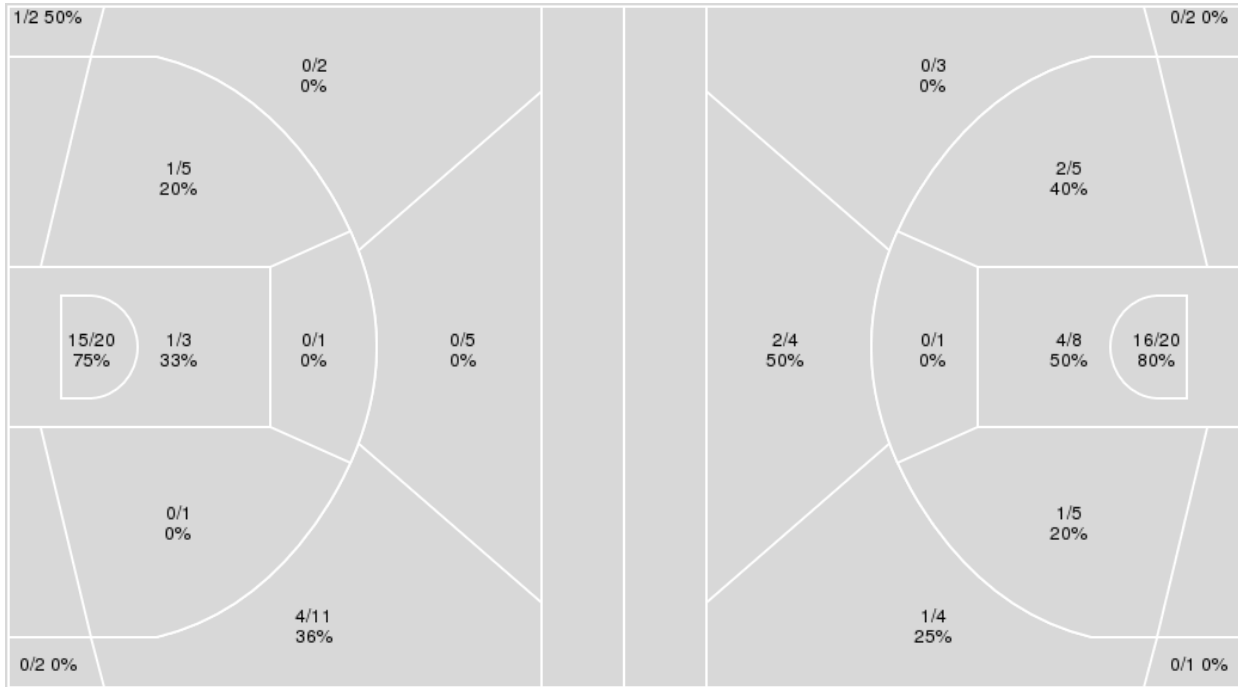
Officials: Doug Shows, Eric Curry, Bobby Daw

{ Players => 0, 1, 3, 5, 10, 13, 14, 15, 22, 23, 24, 25, 33, 34, 50; } FG
Types => All; Results => All;

{ Players => 0, 1, 2, 3, 4, 5, 10, 11, 12, 13, 15, 20, 21, 25, 30, 34, 41; }
FG Types => All; Results => All;

Illinois St.

LSU



Illinois St.	M/A	%
Field Goals	22/52	42
2 Points	17/30	57
3 Points	5/22	23
Free Throws	12/14	86

LSU	M/A	%
Field Goals	26/53	49
2 Points	23/39	59
3 Points	3/14	21
Free Throws	22/30	73



Illinois St. at LSU

11/21/22 John Gray Gymnasium, George Town, Cayman Islands
2022-23 Men's Basketball

Officials: Doug Shows, Eric Curry, Bobby Daw

Illinois St.

No	Name	Mins		Score		Points Diff		Points per Min		Assists		Rebounds		Steals		Turnovers	
		On	Off	On	Off	On	Off	On	Off	On	Off	On	Off	On	Off	On	Off
1	Malachi Poindexter	31:10	08:50	46 - 64	15 - 13	-18	2	1.48	1.70	10	3	17	8	6	2	17	2
3	Seneca Knight	28:29	11:31	47 - 53	14 - 24	-6	-10	1.65	1.22	10	3	21	4	6	2	11	8
5	Alston Andrews	02:47	37:13	0 - 4	61 - 73	-4	-12	0.00	1.64	0	13	2	23	0	8	0	19
10	Darius Burford	33:43	06:17	57 - 67	4 - 10	-10	-6	1.69	0.64	12	1	22	3	8	0	17	2
13	Liam McChesney	19:46	20:14	28 - 35	33 - 42	-7	-9	1.42	1.63	8	5	13	12	2	6	9	10
15	Colton Sandage	28:31	11:29	46 - 52	15 - 25	-6	-10	1.61	1.31	9	4	15	10	7	1	15	4
22	Kendall Lewis	31:23	08:37	49 - 62	12 - 15	-13	-3	1.56	1.39	10	3	22	3	6	2	16	3
23	Harouna Sissoko	02:42	37:18	10 - 7	51 - 70	3	-19	3.70	1.37	2	11	0	25	1	7	0	19
24	Jayden Johnson	06:17	33:43	3 - 10	58 - 67	-7	-9	0.48	1.72	1	12	3	22	0	8	2	17
33	Joe Petrakis	13:10	26:50	17 - 27	44 - 50	-10	-6	1.29	1.64	2	11	9	16	4	4	6	13
50	Ryan Schmitt	02:02	37:58	2 - 4	59 - 73	-2	-14	0.98	1.55	1	12	1	24	0	8	2	17

LSU

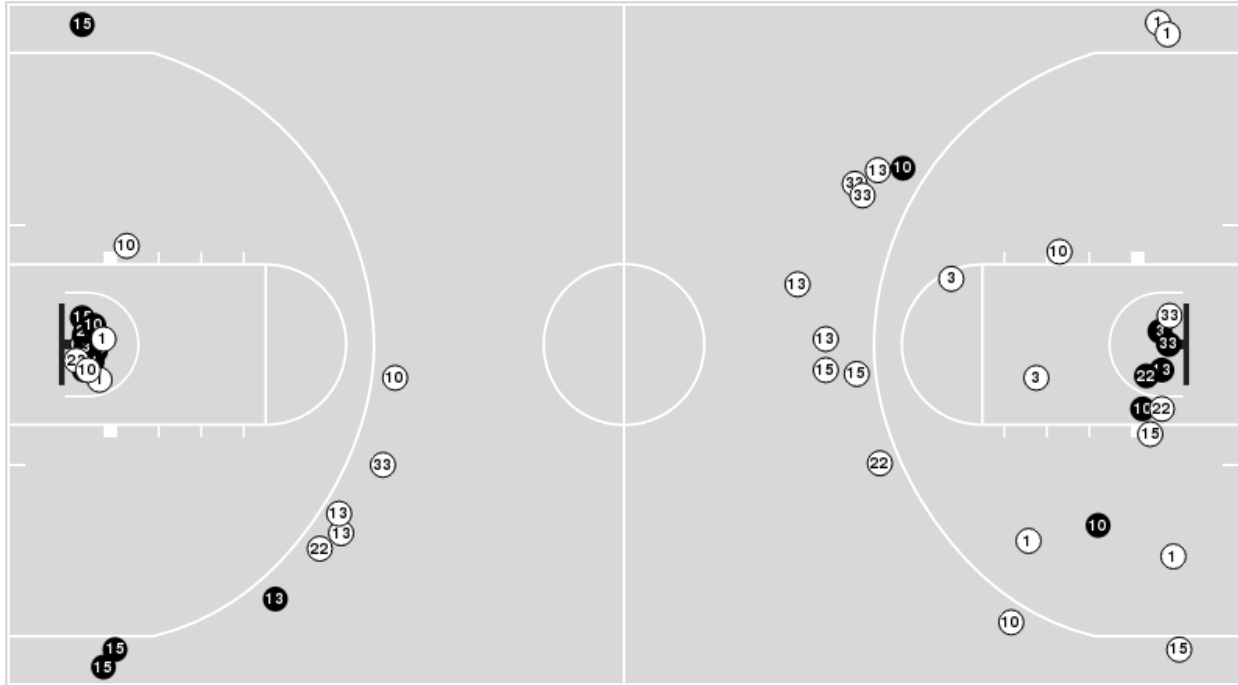
No	Name	Mins		Score		Points Diff		Points per Min		Assists		Rebounds		Steals		Turnovers	
		On	Off	On	Off	On	Off	On	Off	On	Off	On	Off	On	Off	On	Off
0	Trae Hannibal	14:31	25:29	27 - 20	50 - 41	7	9	1.86	1.96	8	9	12	23	3	5	9	9
1	Cam Hayes	21:07	18:53	40 - 30	37 - 31	10	6	1.89	1.96	7	10	20	15	4	4	11	7
3	Justice Hill	29:05	10:55	54 - 40	23 - 21	14	2	1.86	2.11	13	4	25	10	6	2	10	8
4	Kendal Coleman	09:36	30:24	13 - 19	64 - 42	-6	22	1.35	2.11	4	13	8	27	1	7	5	13
5	Mwani Wilkinson	19:56	20:04	32 - 33	45 - 28	-1	17	1.61	2.24	7	10	18	17	3	5	10	8
12	KJ Williams	29:58	10:02	65 - 40	12 - 21	25	-9	2.17	1.20	15	2	27	8	8	0	12	6
13	Jalen Reed	19:20	20:40	41 - 30	36 - 31	11	5	2.12	1.74	8	9	18	17	5	3	9	9
15	Tyrell Ward	03:35	36:25	11 - 8	66 - 53	3	13	3.07	1.81	2	15	2	33	2	6	1	17
20	Derek Fountain	19:57	20:03	35 - 29	42 - 32	6	10	1.75	2.09	7	10	17	18	2	6	9	9
34	Shawn Phillips	01:09	38:51	0 - 4	77 - 57	-4	20	0.00	1.98	0	17	0	35	0	8	1	17
41	Adam Miller	31:46	08:14	67 - 52	10 - 9	15	1	2.11	1.21	14	3	28	7	6	2	13	5



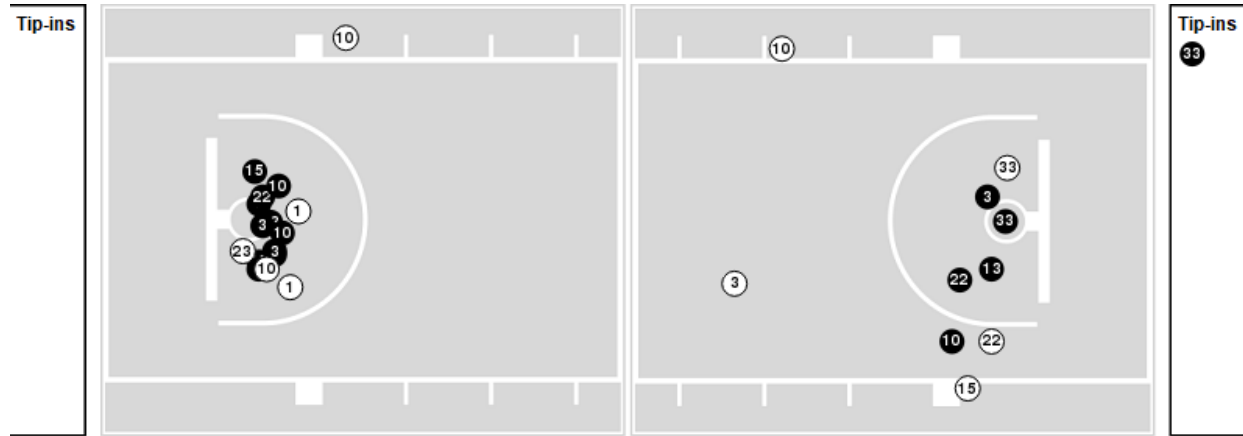
Players => 0, 1, 3, 5, 10, 13, 14, 15, 22, 23, 24, 25, 33, 34, 50FG Types=>AllResults=>All

Illinois St.

All Field Goals



Blow Up Chart



● Made ○ Missed N - Player Number

Illinois St.	M/A	%
Field Goals	22/52	42
2 Points	17/30	57
3 Points	5/22	23
Free Throws	12/14	86

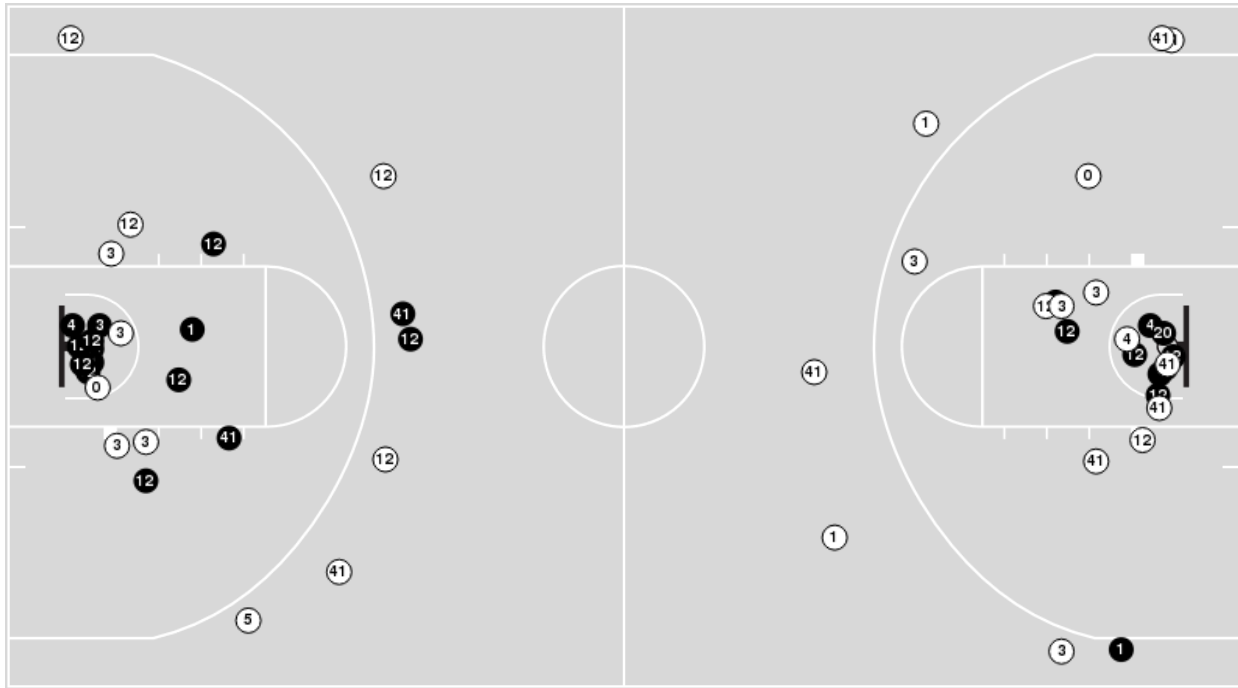
Illinois St.	M/A	%
Points in the Paint	32 (16 / 23)	70
Fast Break Points	17 (10/11)	91
Second Chance Points	4 (2/3)	67
Effective FG%	47	



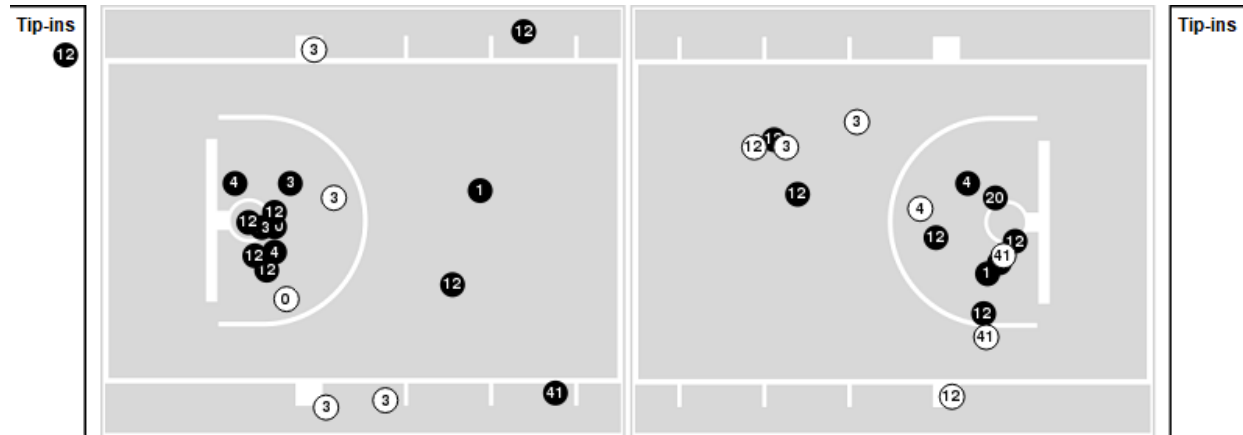
Players => 0, 1, 2, 3, 4, 5, 10, 11, 12, 13, 15, 20, 21, 25, 30, 34, 41 FG Types=>AllResults=>All

LSU

All Field Goals



Blow Up Chart



● Made ○ Missed N - Player Number

LSU	M/A	%
Field Goals	26/53	49
2 Points	23/39	59
3 Points	3/14	21
Free Throws	22/30	73

LSU	M/A	%
Points in the Paint	40 (20 / 28)	71
Fast Break Points	6 (3/3)	100
Second Chance Points	12 (8/10)	80
Effective FG%	52	



Illinois St. at LSU

11/21/22 John Gray Gymnasium, George Town, Cayman Islands
2022-23 Men's Basketball

Officials: Doug Shows, Eric Curry, Bobby Daw

Illinois St.

Lineup	Quarter On	Time On	Quarter Off	Time Off	Time on Court	Score	Score Diff	Reb	Stl	Tov	Ass	PPP
1- Poindexter M/ 10- Burford D/ 13- McChesney L/ 15- Sandage C/ 22- Lewis K/	1	20:00	1	15:23	04:37	3-9	-6	4	0	4	1	0.3333
1- Poindexter M/ 10- Burford D/ 15- Sandage C/ 22- Lewis K/ 33- Petrakis J/	1	15:23	1	13:32	01:51	0-4	-4	0	0	1	0	0.0000
1- Poindexter M/ 3- Knight S/ 10- Burford D/ 22- Lewis K/ 50- Schmitt R/	1	13:32	1	13:11	00:21	0-2	-2	0	0	1	0	0.0000
1- Poindexter M/ 3- Knight S/ 13- McChesney L/ 24- Johnson J/ 50- Schmitt R/	1	13:11	1	11:30	01:41	2-2	0	1	0	1	1	0.6667
1- Poindexter M/ 3- Knight S/ 5- Andrews A/ 13- McChesney L/ 24- Johnson J/	1	11:30	1	08:43	02:47	0-4	-4	2	0	0	0	0.0000
3- Knight S/ 10- Burford D/ 15- Sandage C/ 22- Lewis K/ 33- Petrakis J/	1	08:43	1	04:00	04:43	7-8	-1	3	2	1	0	0.7085
1- Poindexter M/ 3- Knight S/ 10- Burford D/ 22- Lewis K/ 33- Petrakis J/	1	04:00	1	02:04	01:56	3-6	-3	2	0	0	0	1.2295
1- Poindexter M/ 3- Knight S/ 10- Burford D/ 13- McChesney L/ 22- Lewis K/	1	02:04	1	00:39	01:24	3-5	-2	1	0	0	1	1.2295
1- Poindexter M/ 3- Knight S/ 10- Burford D/ 22- Lewis K/ 33- Petrakis J/	1	00:39	2	20:00	00:40	0-5	-5	0	0	2	0	0.0000
1- Poindexter M/ 3- Knight S/ 10- Burford D/ 15- Sandage C/ 22- Lewis K/	2	20:00	2	17:40	02:20	10-4	6	1	0	0	2	2.5773
1- Poindexter M/ 3- Knight S/ 15- Sandage C/ 22- Lewis K/ 24- Johnson J/	2	17:40	2	16:11	01:29	0-4	-4	0	0	1	0	0.0000
1- Poindexter M/ 3- Knight S/ 10- Burford D/ 15- Sandage C/ 22- Lewis K/	2	16:11	2	14:14	01:57	6-2	4	2	2	2	1	1.2000
1- Poindexter M/ 3- Knight S/ 10- Burford D/ 13- McChesney L/ 15- Sandage C/	2	14:14	2	13:07	01:07	0-2	-2	0	1	2	0	0.0000
1- Poindexter M/ 10- Burford D/ 13- McChesney L/ 15- Sandage C/ 23- Sissoko H/	2	13:07	2	10:25	02:42	10-7	3	0	1	0	2	2.0000
1- Poindexter M/ 10- Burford D/ 13- McChesney L/ 15- Sandage C/ 22- Lewis K/	2	10:25	2	09:24	01:01	0-1	-1	0	0	1	0	0.0000
1- Poindexter M/ 10- Burford D/ 15- Sandage C/ 22- Lewis K/ 33- Petrakis J/	2	09:24	2	08:04	01:20	1-3	-2	0	1	2	0	0.3472
1- Poindexter M/ 3- Knight S/ 10- Burford D/ 22- Lewis K/ 33- Petrakis J/	2	08:04	2	05:44	02:20	6-1	5	4	1	0	2	1.5464
1- Poindexter M/ 3- Knight S/ 10- Burford D/ 15- Sandage C/ 22- Lewis K/	2	05:44	2	04:27	01:17	0-3	-3	0	0	0	0	0.0000
3- Knight S/ 10- Burford D/ 13- McChesney L/ 15- Sandage C/ 22- Lewis K/	2	04:27	2	00:20	04:07	8-5	3	5	0	1	3	1.1628
1- Poindexter M/ 3- Knight S/ 13- McChesney L/ 15- Sandage C/ 22- Lewis K/	2	00:20	2	00:20	00:00	1-0	1	0	0	0	0	2.2727
1- Poindexter M/ 3- Knight S/ 13- McChesney L/ 22- Lewis K/ 24- Johnson J/	2	00:20	2	00:20	00:00	1-0	1	0	0	0	0	2.2727
1- Poindexter M/ 3- Knight S/ 13- McChesney L/ 24- Johnson J/ 33- Petrakis J/	2	00:20	2	00:00	00:20	0-0	0	0	0	0	0	0.0000



Illinois St. at LSU

11/21/22 John Gray Gymnasium, George Town, Cayman Islands
2022-23 Men's Basketball

Officials: Doug Shows, Eric Curry, Bobby Daw

LSU

Lineup	Quarter On	Time On	Quarter Off	Time Off	Time on Court	Score	Score Diff	Reb	Stl	Tov	Ass	PPP
3- Hill J/ 5- Wilkinson M/ 12- Williams K/ 13- Reed J/ 41- Miller A/	1	20:00	1	18:35	01:25	2-3	-1	0	1	0	0	0.6944
3- Hill J/ 5- Wilkinson M/ 12- Williams K/ 20- Fountain D/ 41- Miller A/	1	18:35	1	15:55	02:40	5-0	5	3	0	1	0	1.0246
0- Hannibal T/ 3- Hill J/ 12- Williams K/ 20- Fountain D/ 41- Miller A/	1	15:55	1	14:06	01:49	6-0	6	2	0	0	2	2.0833
0- Hannibal T/ 1- Hayes C/ 12- Williams K/ 13- Reed J/ 41- Miller A/	1	14:06	1	12:58	01:08	2-0	2	1	0	1	0	0.8621
0- Hannibal T/ 1- Hayes C/ 5- Wilkinson M/ 12- Williams K/ 13- Reed J/	1	12:58	1	12:27	00:31	0-2	-2	0	0	1	0	0.0000
0- Hannibal T/ 1- Hayes C/ 5- Wilkinson M/ 12- Williams K/ 20- Fountain D/	1	12:27	1	11:30	00:57	2-0	2	1	0	0	1	2.0000
1- Hayes C/ 3- Hill J/ 4- Coleman K/ 5- Wilkinson M/ 20- Fountain D/	1	11:30	1	10:27	01:03	2-0	2	1	0	0	1	1.0000
1- Hayes C/ 3- Hill J/ 4- Coleman K/ 5- Wilkinson M/ 12- Williams K/	1	10:27	1	08:43	01:44	2-0	2	2	0	0	0	1.0000
0- Hannibal T/ 3- Hill J/ 4- Coleman K/ 12- Williams K/ 41- Miller A/	1	08:43	1	05:43	03:00	4-5	-1	3	1	1	2	0.6667
1- Hayes C/ 5- Wilkinson M/ 12- Williams K/ 13- Reed J/ 41- Miller A/	1	05:43	1	02:26	03:17	9-4	5	5	0	1	2	1.6917
1- Hayes C/ 12- Williams K/ 13- Reed J/ 15- Ward T/ 41- Miller A/	1	02:26	1	02:04	00:22	1-1	0	0	0	0	0	2.2727
3- Hill J/ 12- Williams K/ 13- Reed J/ 15- Ward T/ 41- Miller A/	1	02:04	2	20:00	02:04	10-3	7	2	2	0	2	1.8382
3- Hill J/ 5- Wilkinson M/ 12- Williams K/ 13- Reed J/ 41- Miller A/	2	20:00	2	18:24	01:36	2-10	-8	0	0	1	1	0.6667
0- Hannibal T/ 3- Hill J/ 12- Williams K/ 13- Reed J/ 41- Miller A/	2	18:24	2	16:11	02:13	6-0	6	3	0	1	2	1.5464
0- Hannibal T/ 3- Hill J/ 12- Williams K/ 20- Fountain D/ 41- Miller A/	2	16:11	2	13:56	02:15	2-6	-4	1	0	2	1	0.4000
0- Hannibal T/ 1- Hayes C/ 12- Williams K/ 20- Fountain D/ 41- Miller A/	2	13:56	2	13:05	00:51	4-0	4	1	2	1	0	1.3889
0- Hannibal T/ 1- Hayes C/ 4- Coleman K/ 20- Fountain D/ 41- Miller A/	2	13:05	2	12:27	00:38	1-3	-2	0	0	1	0	0.6944
1- Hayes C/ 4- Coleman K/ 5- Wilkinson M/ 20- Fountain D/ 41- Miller A/	2	12:27	2	10:25	02:02	4-7	-3	2	0	2	1	1.0000
1- Hayes C/ 3- Hill J/ 5- Wilkinson M/ 12- Williams K/ 13- Reed J/	2	10:25	2	08:51	01:34	4-0	4	2	2	2	1	1.3889
1- Hayes C/ 3- Hill J/ 5- Wilkinson M/ 13- Reed J/ 20- Fountain D/	2	08:51	2	07:35	01:16	0-3	-3	1	0	1	0	0.0000
3- Hill J/ 5- Wilkinson M/ 13- Reed J/ 20- Fountain D/ 41- Miller A/	2	07:35	2	05:44	01:51	0-4	-4	1	0	1	0	0.0000
1- Hayes C/ 3- Hill J/ 13- Reed J/ 20- Fountain D/ 41- Miller A/	2	05:44	2	03:41	02:03	5-0	5	3	0	0	0	1.3736
1- Hayes C/ 3- Hill J/ 12- Williams K/ 20- Fountain D/ 41- Miller A/	2	03:41	2	01:09	02:32	4-6	-2	1	0	0	1	1.0000
0- Hannibal T/ 1- Hayes C/ 4- Coleman K/ 15- Ward T/ 34- Phillips S/	2	01:09	2	00:00	01:09	0-4	-4	0	0	1	0	0.0000



Illinois St. at LSU

11/21/22 John Gray Gymnasium, George Town, Cayman Islands
2022-23 Men's Basketball

Officials: Doug Shows, Eric Curry, Bobby Daw

Illinois St.

Lineup	Time	Score	Score Diff	Pts/Min	Reb	Stl	Tov	Ass	PPP
1- Poindexter M/ 10- Burford D/ 13- McChesney L/ 15- Sandage C/ 22- Lewis K/	05:38	3-10	-7	0.5325	4	0	5	1	0.2727
1- Poindexter M/ 3- Knight S/ 10- Burford D/ 15- Sandage C/ 22- Lewis K/	05:34	16-9	7	2.8743	3	2	2	3	1.4706
1- Poindexter M/ 3- Knight S/ 10- Burford D/ 22- Lewis K/ 33- Petrakis J/	04:56	9-12	-3	1.8243	6	1	2	2	0.9657
3- Knight S/ 10- Burford D/ 15- Sandage C/ 22- Lewis K/ 33- Petrakis J/	04:43	7-8	-1	1.4841	3	2	1	0	0.7085
3- Knight S/ 10- Burford D/ 13- McChesney L/ 15- Sandage C/ 22- Lewis K/	04:07	8-5	3	1.9433	5	0	1	3	1.1628
1- Poindexter M/ 10- Burford D/ 15- Sandage C/ 22- Lewis K/ 33- Petrakis J/	03:11	1-7	-6	0.3141	0	1	3	0	0.1701
1- Poindexter M/ 3- Knight S/ 5- Andrews A/ 13- McChesney L/ 24- Johnson J/	02:47	0-4	-4	0.0000	2	0	0	0	0.0000
1- Poindexter M/ 10- Burford D/ 13- McChesney L/ 15- Sandage C/ 23- Sissoko H/	02:42	10-7	3	3.7037	0	1	0	2	2.0000
1- Poindexter M/ 3- Knight S/ 13- McChesney L/ 24- Johnson J/ 50- Schmitt R/	01:41	2-2	0	1.1881	1	0	1	1	0.6667
1- Poindexter M/ 3- Knight S/ 15- Sandage C/ 22- Lewis K/ 24- Johnson J/	01:29	0-4	-4	0.0000	0	0	1	0	0.0000
1- Poindexter M/ 3- Knight S/ 10- Burford D/ 13- McChesney L/ 22- Lewis K/	01:24	3-5	-2	2.1429	1	0	0	1	1.2295
1- Poindexter M/ 3- Knight S/ 10- Burford D/ 13- McChesney L/ 15- Sandage C/	01:07	0-2	-2	0.0000	0	1	2	0	0.0000
1- Poindexter M/ 3- Knight S/ 10- Burford D/ 22- Lewis K/ 50- Schmitt R/	00:21	0-2	-2	0.0000	0	0	1	0	0.0000
1- Poindexter M/ 3- Knight S/ 13- McChesney L/ 24- Johnson J/ 33- Petrakis J/	00:20	0-0	0	0.0000	0	0	0	0	0.0000
1- Poindexter M/ 3- Knight S/ 13- McChesney L/ 15- Sandage C/ 22- Lewis K/	00:00	1-0	1	∞	0	0	0	0	2.2727
1- Poindexter M/ 3- Knight S/ 13- McChesney L/ 22- Lewis K/ 24- Johnson J/	00:00	1-0	1	∞	0	0	0	0	2.2727



Illinois St. at LSU

11/21/22 John Gray Gymnasium, George Town, Cayman Islands
2022-23 Men's Basketball

Officials: Doug Shows, Eric Curry, Bobby Daw

LSU

Lineup	Time	Score	Score Diff	Pts/Min	Reb	Stl	Tov	Ass	PPP
0- Hannibal T/ 3- Hill J/ 12- Williams K/ 20- Fountain D/ 41- Miller A/	04:04	8-6	2	1.9672	3	0	2	3	1.0152
1- Hayes C/ 5- Wilkinson M/ 12- Williams K/ 13- Reed J/ 41- Miller A/	03:17	9-4	5	2.7411	5	0	1	2	1.6917
3- Hill J/ 5- Wilkinson M/ 12- Williams K/ 13- Reed J/ 41- Miller A/	03:01	4-13	-9	1.3260	0	1	1	1	0.6803
0- Hannibal T/ 3- Hill J/ 4- Coleman K/ 12- Williams K/ 41- Miller A/	03:00	4-5	-1	1.3333	3	1	1	2	0.6667
3- Hill J/ 5- Wilkinson M/ 12- Williams K/ 20- Fountain D/ 41- Miller A/	02:40	5-0	5	1.8750	3	0	1	0	1.0246
1- Hayes C/ 3- Hill J/ 12- Williams K/ 20- Fountain D/ 41- Miller A/	02:32	4-6	-2	1.5789	1	0	0	1	1.0000
0- Hannibal T/ 3- Hill J/ 12- Williams K/ 13- Reed J/ 41- Miller A/	02:13	6-0	6	2.7068	3	0	1	2	1.5464
3- Hill J/ 12- Williams K/ 13- Reed J/ 15- Ward T/ 41- Miller A/	02:04	10-3	7	4.8387	2	2	0	2	1.8382
1- Hayes C/ 3- Hill J/ 13- Reed J/ 20- Fountain D/ 41- Miller A/	02:03	5-0	5	2.4390	3	0	0	0	1.3736
1- Hayes C/ 4- Coleman K/ 5- Wilkinson M/ 20- Fountain D/ 41- Miller A/	02:02	4-7	-3	1.9672	2	0	2	1	1.0000
3- Hill J/ 5- Wilkinson M/ 13- Reed J/ 20- Fountain D/ 41- Miller A/	01:51	0-4	-4	0.0000	1	0	1	0	0.0000
1- Hayes C/ 3- Hill J/ 4- Coleman K/ 5- Wilkinson M/ 12- Williams K/	01:44	2-0	2	1.1538	2	0	0	0	1.0000
1- Hayes C/ 3- Hill J/ 5- Wilkinson M/ 12- Williams K/ 13- Reed J/	01:34	4-0	4	2.5532	2	2	2	1	1.3889
1- Hayes C/ 3- Hill J/ 5- Wilkinson M/ 13- Reed J/ 20- Fountain D/	01:16	0-3	-3	0.0000	1	0	1	0	0.0000
0- Hannibal T/ 1- Hayes C/ 4- Coleman K/ 15- Ward T/ 34- Phillips S/	01:09	0-4	-4	0.0000	0	0	1	0	0.0000
0- Hannibal T/ 1- Hayes C/ 12- Williams K/ 13- Reed J/ 41- Miller A/	01:08	2-0	2	1.7647	1	0	1	0	0.8621
1- Hayes C/ 3- Hill J/ 4- Coleman K/ 5- Wilkinson M/ 20- Fountain D/	01:03	2-0	2	1.9048	1	0	0	1	1.0000
0- Hannibal T/ 1- Hayes C/ 5- Wilkinson M/ 12- Williams K/ 20- Fountain D/	00:57	2-0	2	2.1053	1	0	0	1	2.0000
0- Hannibal T/ 1- Hayes C/ 12- Williams K/ 20- Fountain D/ 41- Miller A/	00:51	4-0	4	4.7059	1	2	1	0	1.3889
0- Hannibal T/ 1- Hayes C/ 4- Coleman K/ 20- Fountain D/ 41- Miller A/	00:38	1-3	-2	1.5789	0	0	1	0	0.6944
0- Hannibal T/ 1- Hayes C/ 5- Wilkinson M/ 12- Williams K/ 13- Reed J/	00:31	0-2	-2	0.0000	0	0	1	0	0.0000
1- Hayes C/ 12- Williams K/ 13- Reed J/ 15- Ward T/ 41- Miller A/	00:22	1-1	0	2.7273	0	0	0	0	2.2727