



LSU

SOCCEER

NCAA TOURNAMENT
2007 • 2008 • 2009 • 2011 •
2015 • 2018 • 2021 • 2022

SEC TOURNAMENT CHAMPIONS
2018

SEC RUNNERS-UP
2008 • 2009 • 2011

SEC WEST CHAMPIONS
2007 • 2008 • 2009 • 2011

7

vs. Pepperdine

Thursday, September 7
Baton Rouge, La. (LSU Soccer Stadium)
6 p.m. CT

2023 SCHEDULE

DATE OPPONENT LOCATION RESULT/TIME
AUGUST

17	South Florida	Baton Rouge, La.	L, 0-1
20	Southern Miss	Baton Rouge, La.	W, 4-1
24	Texas	Austin, Texas	W, 3-1
27	Southern	Baton Rouge, La.	W, 5-0
31	Wisconsin	Madison, Wi.	L, 0-3

SEPTEMBER

3	TAMUC	Baton Rouge, La.	W, 6-0
7	Pepperdine	Baton Rouge, La.	6 p.m.
10	NSU	Baton Rouge, La.	4 p.m.
15	Ole Miss*	Oxford, Miss.	7 p.m.
21	Georgia*	Athens, Ga.	5 p.m.
24	Miss. State*	Baton Rouge, La.	6 p.m.
29	Florida*	Baton Rouge, La.	6 p.m.

OCTOBER

5	South Carolina*	Columbia, SC	6 p.m.
8	Tennessee*	Baton Rouge, La.	4 p.m.
13	Alabama*	Tuscaloosa, Ala.	7 p.m.
19	Arkansas*	Baton Rouge, La.	6 p.m.
22	Auburn*	Auburn, Ala.	4 p.m.
26	TAMU*	Baton Rouge, La.	7:30 p.m.

29 SEC Tournament Pensacola, Fla. TBA

NOVEMBER

10 NCAA Tournament TBA TBA

On Air

TV: SEC Network+

Play by Play, Lyn Rollins

Analyst, Sara Pollock Dickson

Who To Contact

Assistant Communications

Director/Soccer Contact

Alyssa Leal

Email: aleal3@lsu.edu

Cell: 504-373-7428

Connect with LSU Soccer

@LSUSoccer

LSUSoccer

@LSUSoccer

The Matchup

Series History - Pepperdine

LSU owns a 0-0-2 record against Pepperdine as they look for their first program win over the Waves.

The last time the two programs met was in 2022, when they battled to a 2-2 draw in Malibu.

Last Time On The Pitch

The LSU Soccer team (4-2-0) recorded their fourth victory of the 2023 season on Sunday afternoon at the LSU Soccer Stadium as they defeated the Texas A&M Commerce Lions (1-4-1) by a score of 6-0.

The Tigers began the scoring with a Sage Glover goal after 22 minutes. Midfielder Ida Hermansdottir did an excellent job to hold the ball up in the Lions' final third, where she played in forward Mollie Baker just outside the eighteen yard box. Baker wasted no time and fired a pass into a surging Glover, who made no mistake slotting it past the Lions goalkeeper Gillian McKenzie. The goal was Glover's second of the season while Hermansdottir and Baker were credited with assists.

LSU's second goal came just before halftime in the 43rd minute. Midfielder Jordan Johnson found herself all alone in the midfield and sent a brilliant ball to forward Raelyn Prince, who hit an incredible shot off of a half volley just outside the box that was no match for the Lions' goalkeeper and landed in the back of the net. The goal was Prince's first of the season while Johnson's assists was her second of the year.

The Tigers found themselves on the scoresheet early in the second half via a Britney Bertram header in the 53rd minute. Prince and Caley Swierenga connected on short passes from a corner that saw Swierenga cross the ball into the box for Bertram, who headed it home with power to make it 3-0 on the day. The goal was Bertram's second of the season while Prince's assist was her second as well. For Swierenga, the assist was the first of her collegiate career.

Midfielder Kelsey Major made it 4-0 in the 58th minute with a superb left-footed finish from 14 yards out. Swierenga sent a cross from the right flank to Major in the box, who recovered from a mistake on her first touch by firing a bullet on the turn with her left foot that powered past the goalkeeper. The goal was the first of her collegiate career for the sophomore from New Orleans while Swierenga's assist was her second of the day.

The fifth goal of the day came in the 84th minute as Rammie Noel pounced on a loose ball in the box with a right foot half-volley from ten yards out. The goal was the second of the season for Noel and the eighth in her career.

LSU's final goal of the day came two minutes later as Major doubled her tally. Defender Laney Gonzales sent an accurate cross from the left flank into the box that found the head of Major, who sent it past the goalkeeper and into the left corner. With the goal, Major's goal count moved up to two while Gonzales' assist is her first this season.

The Tigers outshot the Lions by a margin of 26-3, with the visiting team unable to register a shot on goal in the match. LSU's defense claimed its second clean sheet of the season and limited the Lions in quality and quantity of choices. In possession, LSU won the battle by a margin of 70% to 30%. It was a total team effort from top to bottom for the Tigers.

The 2023 Squad

This year, the squad is composed of nine seniors, three juniors, 11 sophomores and five freshmen. 21 Tigers return from the 2022 roster who made a run to the second round of the NCAA Tournament. Fifth-year veterans Mollee Swift and Maya Gordon are key returners as they lead the squad as captains this upcoming season. Also returning are seniors Rammie Noel, Taylor Dobles, Jordan Johnson, Abby Smith, Britney Bertram, Mollie Baker and Bella Zanotelli, who bring experience and depth to the squad.

There are seven new faces on the 2023 squad, including freshman Caley Swierenga, Andrea Ilijkic, Ava Galligan, Brielyn Knowles and Alyson Campbell. New to the squad this year is also sophomore transfer out of Oklahoma, Hali Hartman, and walk-on Sarah Portis.



Quick Facts

UNIVERSITY

Location	Baton Rouge, La.
Founded	1860
Enrollment	31,414
Nickname	Tigers or Fighting Tigers
Facility	LSU Soccer Stadium (2,197)
All-Time Home Record	147-87-33
Mascot	Mike VII (Live Bengal Tiger)
Colors	Purple and Gold
Conference	Southeastern
Affiliation	NCAA Division I
President & Chancellor	William Tate IV
Faculty Athletics Representative	Dr. Lori Martin

ATHLETIC DEPARTMENT

Director of Athletics	Scott Woodward
Executive Deputy AD/Executive Director of External Relations	Verge Ausberry
Executive Deputy AD/COO	Kelli Zinn
Sr. Associate AD/Facilities & Project Development	Emmett David
Sr. Associate AD/Athletics Facilities Management	Dan Gaston
Sr. Associate AD/ Health and Wellness	Shelly Mullenix
Sr. Associate AD/Sr. Woman Administrator	Miriam Segar
Interim Senior Advisor to the AD for Equity, Diversity & Inclusion Director, Student-Athlete Mental Health	Dr. Lakeitha Poole
Chief of Staff	Andrea Tepe

SOCCER STAFF

Head Coach	Sian Hudson (Fourth Season)
Alma Mater	Cardiff Metropolitan (2002)
Career Record(s)	81-30-15
at University of Colorado at Colorado Springs (2017-2019)	52-10-4
at LSU (Present)	29-20-11
Associate Head Coach	Seb Furness (Fourth Season)
Alma Mater	West Texas A&M (2012)
Assistant Coach	Tiffany Hansen (Second Season)
Alma Mater	Bowling Green (2008)
Assistant Coach	Trey Thompson (First Season)
Alma Mater	Kansas Wesleyan (2007)
Director of Operations	Samantha Etherington
Strength & Conditioning	Renee Balconi
Athletic Trainer	Hannah Faldetta

TEAM INFORMATION

2022 Record	10-4-7
2022 SEC Record	4-2-4
Letterwinners Returning/Lost	22/10
Starters Returning/Lost	8/4
Newcomers	6
Inaugural Season	1995
Overall Record	250-232-70

ATHLETIC COMMUNICATIONS

Associate AD/Communications	Michael Bonnette
Sr. Associate Communications Director	Bill Franques
Sr. Associate Communications Director	Kent Lowe
Assistant Communications Director (Soccer Contact)	Alyssa Leal

CREATIVE SERVICES

Executive Director / Creative Services	Jason Feirman
Creative Services Coordinator	Lindsey Thompson
Creative Services Coordinator	Tyler Schiefelbein
Creative Services Coordinator	Stephanie Lyles
Photography Coordinator	Chris Parent
Executive Director of Creative Content	Emily Dixon
Coordinator of Creative and Digital Content	Matt Tornquist
Chief Brand Officer	Cody Worsham

MEDIA CONTACT INFORMATION

Athletic Communications	(225) 578-8226
Alyssa Leal's Mobile	(504) 373-7428
Alyssa Leal's E-Mail	aleal3@lsu.edu
Website	LSUsports.net

SOCCER CONTACT INFORMATION

Director of Operations	Samantha Etherington
------------------------	----------------------

Sam Etherington's Mobile	(318)-730-4934
Sam Etherington's E-Mail	setherington@lsu.edu
Soccer Office	(225) 578-3947

2023 LSU SOCCER SCHEDULE

AUGUST

17	vs. South Florida	Baton Rouge, La.	6 p.m.
20	vs. Southern Miss	Baton Rouge, La.	4 p.m.
24	at Texas	Austin, Texas	7 p.m.
27	vs. Southern	Baton Rouge, La.	6 p.m.
31	at Wisconsin	Madison, Wi.	7 p.m.

SEPTEMBER

3	vs. TAMUC	Baton Rouge, La.	1 p.m.
7	vs. Pepperdine	Baton Rouge, La.	6 p.m.
10	vs. Northwestern State	Baton Rouge, La.	4 p.m.
15	at Ole Miss	Oxford, Miss.	7 p.m.
21	at Georgia	Athens, Ga.	5 p.m.
24	vs. Mississippi State	Baton Rouge, La.	6 p.m.
29	vs. Florida	Baton Rouge, La.	6 p.m.

OCTOBER

5	at South Carolina	Columbia, SC	6 p.m.
8	vs. Tennessee	Baton Rouge, La.	4 p.m.
13	at Alabama	Tuscaloosa, Ala.	7 p.m.
19	vs. Arkansas	Baton Rouge, La.	6 p.m.
22	at Auburn	Auburn, Ala.	4 p.m.
26	vs. Texas A&M	Baton Rouge, La.	7:30 p.m.
29	SEC Tournament	Pensacola, Fla.	TBA

NOVEMBER

10	NCAA Tournament	TBA	TBA
----	-----------------	-----	-----

MEDIA INFORMATION

The 2023 LSU Soccer Record Book was written to provide members of the media with statistics and information needed to adequately cover the LSU Soccer team. For further information on the team and the scheduling of interviews with head coach Sian Hudson, associate head coach Seb Furness, assistant coaches Tiffany Hansen and Trey Thompson or LSU student-athletes, please contact Alyssa Leal in the LSU Athletic Communications Department at (504)-373-7428

MAILING ADDRESS

LSU Athletic Communications
LSU Box 25095
Baton Rouge, LA 70803

OVERNIGHT MAILING ADDRESS

Athletic Administration Building, Fifth Floor
North Stadium Drive
Baton Rouge, LA 70894

CREDENTIALS

Media credentials should be requested prior to each game. Season credentials are also available upon request. Passes will be available for pick up in the press box at the LSU Soccer Stadium. All requests should be made by contacting Alyssa Leal via phone or email.

INTERVIEWS

Postgame interviews, including those with players and coaches from both teams, will be held on the field approximately five minutes following the completion of each match. Alyssa Leal will take interview requests during the second half of each match and coordinate with the requested coach or student-athlete for postgame interviews. Game information, including halftime and final game statistics, will be provided in the press box.

Practices are also open to the media with Sian Hudson and the players available for interviews after each session. Contact Alyssa Leal to make arrangements to cover a practice.

LSU SOCCER ON THE SEC NETWORK

The Southeastern Conference and ESPN have a 20-year agreement through 2034 to create a multi-platform SEC Network which launched in August 2014. The SEC Network and its accompanying digital platform airs SEC content 24/7, including more than 1,000 events annually.



CREDITS

Editor	Alyssa Leal
Design and Layout	Alyssa Leal, Jason Feirman
Cover Design	Perry Spitzer
Photography	Chris Parent, Gus Stark, Beau Brune



2023 SEC Watchlist



Mollee Swift / GK / Grad.



Maya Gordon / D / 5yrSr.



Ida Hermannsdottir / M / So.



Mollie Baker / F / Sr.



Rammie Noel / F / 5yrSr.

2023 SEC Watchlist Cont.

Mollie Baker, Maya Gordon, Ida Hermannsdottir, Rammie Noel and Mollee Swift are five of 72 student-athletes on this year's watchlist.

A defender from Fort Lauderdale, Florida, Gordon has been a key component to the LSU defense over the past four years. She returns experience to the backline as she earned the start in 18 of 19 games played for the Tigers last season and helped shutout five opponents in 2022.

Swift is a three-year starter who also returns experience to the team this year. Last year, the goalkeeper recorded 77 saves (third best in SEC) on a 74% save percentage on the year, was responsible for five clean sheets and averaged 4.05 saves per game, which lead all SEC keepers between the posts.

A native of Reykjavik, Iceland, Hermannsdottir enters her second year with the Tigers after recording seven goals, two assists and 16 shots on goal last year.

The rising sophomore earned multiple honors in her debut season at LSU in 2022, including All-SEC Freshman Team, Top Drawer Soccer All-Freshman Team and LSWA Louisiana Freshman of the Year.

Noel is a forward from Carencro, Louisiana, who is a major contributor on the wing for the Tigers. She started in 16 matches with 19 appearances and tallied one goal and two assists throughout the 2022 season.

In her debut season as a Tiger after transferring from North Carolina in 2022, Baker notched four goals, six assists, 17 shots on goal and one game winning goal in the squad's 3-2 win versus Kentucky last season. The forward continues to be an offensive force for the Tigers as she enters her senior season this year.

The Captains

LSU is captained by the veteran duo of fifth year seniors Maya Gordon and Mollee Swift.

A native of Papillion, Nebraska, Swift recorded 77 saves in between the posts for the Tigers last season, which placed her third in the conference. She also averaged 4.05 saves per game leading all SEC keepers. The goalkeeper was responsible for five clean sheets in the 2022 season and finished the year with a record of 7-4-7 and 1,693 minutes played.

She currently ranks third in LSU program history in saves and shutouts as she will look to break records in 2023.

Gordon is a veteran in the backline who has notched notable minutes in her four years at LSU with a total of 4,775 minutes on the pitch heading into her final season. The Fort Lauderdale, Florida, native earned the start in 18 of 19 matches for the Tigers last year and returns experience to the defensive unit.

Dobles Tabs SEC POTW Honors

LSU Soccer forward Taylor Dobles earned SEC Player of the Week honors on Monday, August 28 following her performance against No. 9 Texas.

The award marked the first conference honor for the graduate student in her career.

The Pembroke Pines, Florida native had a huge performance on the road to lead the Tigers to victory over No. 9 Texas on Thursday, August 24. Dobles tallied a brace against the Longhorns to match her career high in a single match and get on the scoresheet for the first time this year.

Dobles put the Tigers on the board first in the 29th minute to give the Tigers the early lead in Austin. Forward Ava Galligan sent a cross from the right side to the back post that found the head of Rammie Noel. Noel's header was centered to Dobles, who pounced with a header from six yards out that powered over the Longhorn defender on the goal line to give LSU the 1-0 lead. The goal was Dobles' first of the season and sixth in her career.

Her scoring continued in the final minute of the first half as Dobles pounced on a defensive error from a Texas defender and broke away into a one-on-one chance. She dribbled into the box and sent a strong shot from 15 yards out that skipped past the goalkeeper and made it 3-0 with her second goal of the night. The goal was Dobles' seventh of her collegiate career and her third brace.

Dobles and the Tigers made history as they defeated Texas for the first time in series history and recorded the program's first Top-10 win on the road. The 2021 season saw the last time LSU defeated a ranked opponent at home and on the road with victories over No. 4 Arkansas in Baton Rouge and No. 21 Arizona State in Tempe.

The victory also ended the Longhorns 11-match winning streak at home.

Noel TDS Team of the Week

A fifth-year senior from Carencro, Louisiana, Noel has been a crucial component for the Tigers this year on both sides of the ball. She was named to the Top Drawer Soccer Team of the Week in week three following the Tigers matches against No. 9 Texas and Southern.

Against the Longhorns, the forward tallied an assist as teammate Taylor Dobles found the finish for the opening goal of the match against No. 9 Texas in the 28th minute.

Noel notched her first goal of the year in the Tigers last match against Southern. Defender Maya Gordon found open midfielder Ava Galligan, who took the ball with open space down the right side. The freshman sent a ground cross ball into the box to Noel, who found the finish as she tapped it into the back of the net to



The Brace Special

Forwards Mollie Baker and Taylor Dobles and midfielder Ida Hermannsdottir each recorded a brace on the year.

Baker and Hermannsdottir both individually recorded a brace in the Tigers match against Southern Miss to lead LSU to victory with a 4-1 win over the Golden Eagles.

It was the first time two players individually scores two goals in a match since 2021, when Alesia Garcia and Tinaya Alexander tallied multiple goals over Sam Houston.

Dobles found her sixth and seventh career goals against No. 9 Texas to match her career high of two goals in a single match. The graduate student helped lead the Tigers to victory to take down a ranked opponent on the road on August 24.

2023 Stat Leaders

Baker and Hermannsdottir have started in all six matches thus far and lead the squad in goals and points. Both Tigers have individually recorded three goals and two assists each to tally eight points on the year.

Baker's goals this year came against Southern Miss and Southern to move her career total to seven while Hermannsdottir tallied goals against Southern Miss and No. 9 Texas. The sophomore owns 10 career goals.

The duo ranks amongst the top-10 players in the conference in shots, goals and points.

Dobles follows as the second goal leader with two on the year, both coming from the Tigers win against No. 9 Texas.

Freshman forward Ava Galligan has tallied three assists in her first year as a Tiger to record a team-high. She is tied at the top for most assists through six matches in the conference.

Goalkeeper Mollee Swift has recorded 12 saves on the year with five starts and 400 minutes played in between the posts this year. Her 12 saves rank as the fourth-most in the conference thus far.

Conference Rankings

LSU sits at sixth in the SEC West rankings with a 4-2-0 overall record. The squad holds a 3-1-0 home record and a 1-1-0 on the road as they approach a two-game home slate on Thursday.

The Tigers lead the rankings in points, assists and assists per game while being tied with Arkansas and South Carolina for most goals.

2022-23 LSWA All-Louisiana

Head Coach Sian Hudson and midfielder Ida Hermannsdottir earned top honors by the 2022 Louisiana Sports Writers Association (LSWA).

Hudson was tabbed the LSWA Coach of the Year while Hermannsdottir was named the Louisiana Freshman of the Year.

In only her third season leading the Tigers, Hudson coached LSU to the program's eighth NCAA Tournament appearance in 2022, where the squad recorded their first postseason win of Hudson's tenure, defeating Southland Conference champion Lamar in the first round of the NCAA Tournament.

The 2022 season marked the program's 13th ten-win season as Hudson and the Tigers finished with an overall record of 10-4-7. The regular season was highlighted by five shutouts and three draws against top-ranked opponents.

Hermannsdottir was a key member of the LSU squad as she led the team with seven goals in her first year as a Tiger. The Reykjavik, Iceland product was named to the All-Freshman Team by the SEC and Top Drawer Soccer after a dynamic collegiate debut.

On top of being named the top freshman in the state, Hermannsdottir was one of three Tigers on the All-Louisiana First Team. Also representing LSU were a pair of seniors in defender Lindsy Jennings and midfielder Wasila Diwura-Soare.

A Roster Near and Far

The 2023 roster features 28 athletes, seven of which are newcomers to the squad.

Three countries are represented in the squad (United States, Iceland and Sweden). Ida Hermannsdottir is a native of Iceland and Angelina Thoreson is a proud Swede.

Of the remaining 26 athletes, six are native to Colorado, five to Texas, and four to Louisiana and Florida. The remaining states that are represented among this year's squad are Arizona, New York, Virginia, Nebraska, Virginia and Washington.

Top Drawer Top 100 Freshmen

Freshmen Ida Hermannsdottir and Angelina Thoreson were named to Top Drawer Soccer's Top 100 Freshman in 2022.

The list, announced by the organization, ranked the top 100 freshmen players in the country. Midfielder Ida Hermannsdottir ranked at No. 10 and forward Angelina Thoreson was ranked No. 38.

Hermannsdottir led the LSU squad in goals scored with seven in her first season with the Tigers.

As a freshman, Hermannsdottir started in 16 matches for the Tigers and recorded seven goals, two assists, 16 shots on goal and 16 points.

The Icelandic international has represented Iceland at senior, U19, and U17 levels and has made two senior appearances for the Iceland National Team. Prior to LSU, Hermannsdottir played professionally at Valur Reykjavik in Iceland, where she made 41 appearances for Valur Reykjavik and scored 10 goals. She helped claim the Iceland League Title and Rerykjavik Cup in 2021 and the Icelandic Women's Super Cup in 2022.

Thoreson led the Tigers in assists with nine on the year. Along with a team-high seven assists, Thoreson also recorded one goal, 13 shots on goal and 11 points through 21 games. She started in 17 of those matches. The forward placed sixth in the country for assists.

The Sweden native played the last three seasons (2019, 2020, 2021) for IK Uppsala, a professional club back in Sweden and made over 50 appearances for the club. Thoreson played the 2019 season in the Damallsvenskan division, which is the highest level of women's soccer in Sweden. She scored five goals in 20 games played during the 2021 season.

Next Up

LSU began a three-game home slate on Sunday, September 3 against the Texas A&M-Commerce Lions.

The Tigers defeated the Lions as they prepare to take on Pepperdine this Thursday night followed by another home match against Northwestern State on Sunday, September 7 at 4 p.m. CT.

LSU owns the series over Northwestern State with a 4-0-1 record. The Tigers and the Demons last met in 2015 when the two teams battled to a 1-1 draw in Baton Rouge.





2023 Soccer Staff



Sian Hudson

Head Coach
4th Year

- Hudson enters her fourth season leading the Tigers. She owns a 29-20-11 record in the Purple & Gold
- Hired as LSU head coach on Dec. 11, 2019
- 81-30-15 record as collegiate head coach
- Led the Tigers to the program's eighth NCAA Tournament appearance in 2022 for second time in her LSU career
- Recorded two 10+ winning seasons during her three seasons at LSU
- Led LSU to record of 8-8-3 in debut season; that was an +5 win improvement from the season before her arrival
- Six Tigers have taken their career to the professional level under Hudson, including two NWSL draft selections
- Led University of Colorado at Colorado Springs to a NCAA Division II No. 1 ranking in 2019
- 2019 Rocky Mountain Athletic Conference Coach of the Year
- Took UCCS to the NCAA Division II Tournament in 2017, 2018, and 2019.
- Led the Colorado Pride (W-League) to Western Conference Championship in 2015



Trey Thompson

Assistant Coach
1st Year

- Thompson served as the volunteer coach for the Tigers during the 2022 season before being promoted to assistant coach in 2023
- Spent seven years coaching youth teams at Sereno Soccer Club, Arizona's most prestigious club for youth
- Split time as a head coach in the US Youth Soccer Olympic Development Program, where he and his teams made the Western Region finals four times, winning it in 2018 and 2019
- Named the 2019 Arizona Youth Soccer Competitive Coach of the Year
- Coached youth soccer in the Real Salt Lake-AZ and Utah Royals setup. His Utah Royals team were DPL National Champions in 2021



Seb Furness

Associate Head Coach
4th Year

- Vital staff member as he was promoted to Associate Head Coach in August 2022 after serving as an assistant coach in his first two years in Baton Rouge
- In Furness' time, the Tigers have reached the NCAA Tournament twice (2021, 2022)
- Helped LSU register six shutouts and a GAA of 0.95 in his first season in Baton Rouge
- Spent four seasons as goalkeepers coach at Colorado State (2016-19)
- Led sophomore goalkeeper Gabi McDonald (CSU) to the 10th best save percentage (.879) in the NCAA in 2019. McDonald was first keeper in CSU history to earn Mountain West First Team honors and was named to United Soccer Coaches All-Pacific Team
- Helped Colorado State lower goals allowed total of 36 in 2016 to only 15 in 2019. The Rams lowered goals allowed in each of the four seasons he was on staff
- Played the goalkeeper position at West Texas A&M from 2008-11. In 2009, his save percentage of .889



Renee Balconi

Strength & Conditioning
4th Year

- Trained a number of professional athletes during her tenure at Balconi Top Training, a company she founded in 2009
- Served as a high performance director for a number of universities and high schools over the past decade
- In the process of obtaining her master's degree in Exercise Science from Concordia University
- NCSA Certified Strength and Conditioning Specialist since 2017
- Four-year starter for the University of Cincinnati soccer team from 2000-04
- She trained current U.S. national soccer team member, Rose Lavelle, while also training athletes from the NWSL, MLS, NFL and NBA



Tiffany Hansen

Assistant Coach/Recruiting Coordinator
2nd Year

- This season marks Hansen's 16th season as a Division I assistant coach. She spent seven years at University of Michigan
- Put together the No. 6 recruiting class in all of the country in 2017, which paid dividends in Michigan's success the last five seasons
- Helped Michigan have immense success as the Wolverines advanced to the NCAA Tournament in 2015, 2019, and 2021.
- The Wolverines had a record of 18-4-3 in 2021 and advanced the quarterfinals of the NCAA Tournament.
- Prior to Michigan, Hansen was the goalkeeper coach, lead recruiter, and camp director at the University of Dayton and helped the Flyers appear in two Atlantic 10 Conference tournament championships in 2011 and 2014, and the regular season title in 2013
- Experienced working with US Soccer at the Youth Level as she served as an assistant with both the U17 and U18 WNT, while also working as a scout for US Soccer across the country
- Will work directly with LSU's goalkeepers.



Hannah Faldetta

Athletic Trainer
10th Year

- Served as LSU soccer's athletic trainer since 2014
- Graduate assistant at West Virginia University and earned her master's degree in Athletic Training
- Attended Purdue University for undergrad and graduated in 2012 with a degree in athletic training
- Studied abroad in China during her time at Purdue at the Beijing Sport University



2023 Roster



Bailey Herfurth
5-11 • Fr. • GK
Northport, N.Y.
IMG Academy



Mollee Swift
5-9 • Sr. • GK
Papillion, Neb.
UCCS/La Vista HS



Jocelyn Olivierre
5-7 • Fr. • D
Colorado Springs, Colo.
Air Academy HS



Hali Hartman
5-7 • So. • D
Grand Prairie, Texas
South Grand Prairie HS



Neveah Johnson
5-5 • Jr. • M
Arlington, Texas
Kennedale HS



Danielle Shannon
5-1 • RFr. • M
Houston, Texas
Houston Dash Academy



Maya Gordon
5-6 • Gr. • D
Fort Lauderdale, Fla.
Cypress Bay HS



Ida Hermannsdottir
5-10 • So. • M
Reykjavik, Iceland
Valur Reykjavik



Angelina Thoreson
5-5 • So. • F
Uppsala, Sweden
IK Uppsala



Laney Gonzales
5-5 • So. • F
Magnolia, Texas
Magnolia HS



Taylor Dobles
5-10 • Gr. • F
Pembroke Pines, Fla.
American Heritage School



Jordan Johnson
5-6 • Sr. • M
Denver, Colo.
Prairie View HS



Caley Swierenga
5-9 • Fr. • D
Denver, Colo.
Lutheran HS



Kelsey Major
5-5 • So. • M
New Orleans, La.
St. Mary's Dominican



Andrea Ijckic
5-7 • Fr. • F
Littleton, Colo.
Columbine HS



Ava Galligan
6-0 • Fr. • F/M
Ashburn, Va.
Independence HS



Tori Gillis
5-7 • Jr. • M
Leesburg, Va.
Loudoun County HS



Raelyn Prince
5-5 • So. • M
Titusville, Fla.
Titusville HS



Bella Zanotelli
5-11 • Sr. • GK
Pueblo West, Colo.
Cheyenne Mountain HSS



Abby Smith
5-5 • Sr. • M
Flower Mound, Texas
Flower Mound HS



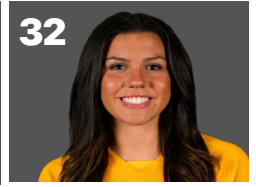
Britney Bertram
5-7 • 5YSr. • F
Slidell, La.
Stetson/Northshore HS



Brielyn Knowles
5-8 • Fr. • M
Orlando, Fla.
Windemere Prep



Jaden Humbyrd
5-5 • Jr. • M
Issaquah, Wash.
Issaquah HS



Alyson Campbell
5-6 • Fr. • GK
Boulder, Colo.
Fairview HS



Rammie Noel
5-0 • 5YSr. • F
Carencro, La.
Acadiana HS



Sarah Portis
5-6 • RSo. • D
Anaheim, Calif.
Dana Hills HS



Sage Glover
5-2 • So. • F
New Orleans, La.
North Atlanta HS



Mollie Baker
5-7 • Sr. • F
Gilbert, Ariz.
Williams Field HS



2023 Roster

Full Name	Position	23Height	23Class	23Exp.	Hometown	High School	Previous School(s)
Bailey Herfurth	Goalkeeper	6-0	Redshirt Freshman	1L	Northport, N.Y.	IMG Academy	
Mollee Swift	Goalkeeper	5-7	Graduate Student	3L	Papillion, Neb.	Papillion-La Vista HS	Colorado at Colorado Springs
Jocelyn Ollivierre	Defender	5-7	Sophomore	1L	Colorado Springs, Colo.	Air Academy HS	
Hali Hartman	Defender	5-7	Sophomore	TR	Grand Prairie, Texas	South Grand Prairie HS	Oklahoma
Nevaeh Johnson	Midfielder	5-5	Junior	3L	Arlington, Texas	Kennedale HS	
Danielle Shannon	Midfielder	5-1	Redshirt Freshman	1L	Houston, Texas	Houston Dash Academy	
Maya Gordon	Defender	5-6	Graduate Student	4L	Fort Lauderdale, Fla.	Cypress Bay HS	
Ida Hermannsdottir	Midfielder	5-10	Sophomore	1L	Reykjavik, Iceland	Valur Reykjavik	
Angelina Thoreson	Forward	5-5	Sophomore	1L	Uppsala, Sweden	Celsiuskolan	
Laney Gonzales	Defender	5-5	Sophomore	1L	Magnolia, Texas	Magnolia HS	
Taylor Dobles	Forward	5-9	Graduate Student	3L	Pembroke Pines, Fla.	American Heritage School	
Jordan Johnson	Midfielder	5-6	Senior	3L	Denver, Colo.	Prairie View HS	
Caley Swierenga	Defender	5-9	Freshman	HS	Denver, Colo.	Lutheran HS	
Kelsey Major	Midfielder	5-5	Sophomore	1L	New Orleans, La.	St. Mary's Dominican HS	
Andrea Iljkic	Forward	5-7	Freshman	HS	Littleton, Colo.	Columbine HS	
Ava Galligan	Forward/Midfielder	6-0	Freshman	HS	Ashburn, Va.	Independence HS	
Tori Gillis	Midfielder	5-7	Junior	2L	Leesburg, Va.	Loudoun County HS	
Raelyn Prince	Midfielder	5-5	Sophomore	1L	Titusville, Fla.	Titusville HS	
Bella Zanotelli	Goalkeeper	5-11	Senior	3L	Pueblo West, Colo.	Cheyenne Mountain HS	
Abby Smith	Midfielder	5-7	Senior	3L	Flower Mound, Texas	Flower Mound HS	
Britney Bertram	Forward	5-6	5th-Year Senior	2L	Slidell, La.	Northshore HS	Stetson
Brielyn Knowles	Midfielder	5-8	Freshman	HS	Orlando, Fla.	Windermere Preparatory School	
Jaden Humbyrd	Midfielder	5-6	Junior	2L	Issaquah, Wash.	Issaquah HS	
Alyson Campbell	Goalkeeper	5-6	Freshman	HS	Boulder, Colo.	Fairview HS	
Rammie Noel	Forward	5-0	5th-Year Senior	4L	Carencro, La.	Acadiana HS	
Sarah Portis	Defender	5-6	Redshirt Sophomore	HS	Anaheim, Calif.	Dana Hills HS	
Sage Glover	Forward	5-2	Sophomore	1L	New Orleans, LA	North Atlanta HS	
Mollie Baker	Forward	5-7	Senior	1L	Gilbert, Ariz.	Williams Field HS	North Carolina

2023 Pronunciation Guide

0 – Bay-lee	Her-Furth
2 – Jaw-suh-lyn	Ole-lee-vair-ay
3 – Hay-lee	Heart-man
7 – Nuh-vay-uh	Johnson
9 – My-uh	Gor-done
10 – Ee-duh	Her-mans-daw-ter
11 – An-jel-ee-nah	Thaw-sun
12 – Lane-ee	Gun-zawl-less
13 – Taylor	Doh-blez
17 – KAY-lee	SWAIR-ing-uh
19 – Un-DREY-uh	ILL-keesh
24 – Bell-uh	Zan-oh-tell-ee
26 – BREE-lin	Noles
29 – Jay-den	Hum-bird
38 – Ray-me	No-el

Sian Hudson

HEAD COACH • 4th Season



Sian (pronounced SHAWN) Hudson was named LSU's head coach on December 11, 2019. Since that date, she's helped take LSU to places its never been before. A No. 5 national ranking in the fall of 2021, the highest in program history, and she's already amassed five wins over nationally ranked teams. In only her third season as head coach of the Fighting Tigers, Hudson led her squad to the program's eighth NCAA Tournament appearance in 2022 and marked the second postseason appearance in her LSU career. The Tigers first round win over Lamar on November 11 marked Hudson's first victory in the NCAA Tournament. Last year, Hudson recorded the program's 13th ten-win season with an overall record of 10-4-7 in 2022. The Tigers shutout five opponents and recorded a draw against three ranked opponents.

Hudson and the LSU Soccer program invest in developing their players. In her time as head coach, Hudson has had six players take their talents to the next level. Shannon Cooke, Lindsie Jennings, Alesia Garcia, Brenna McPartlan, Tinaya Alexander and Athene Kuehn were coached and developed by Hudson and are now playing professionally across the world.

In three short years, Hudson and the Tigers have shattered LSU Soccer Stadium attendance records. Two of the program's top ten all-time largest crowds were under Hudson as LSU continues to be one of the top program's nationally with fan attendance, earning Top 15 status in 2021. The 2021 fall season started off about as good as it could have with the Tigers winning eight straight under the direction of Hudson. Included in those eight straight wins were triumphs over three ranked squads – No. 15 USF, No. 19 UCF, and No. 21 Arizona State. Pair those eight wins with the final three from the spring season of 2021 and LSU had won a program record 11 straight games.

LSU tallied a total of four ranked wins during the 2021 season. The aforementioned three above in an 11-day span from late August to early September, and then the biggest one of them all came in the regular season finale against No. 4 Arkansas. With LSU's season on the line, the Tigers came out with a fiery passion under Hudson on Oct. 28, 2021, as the Tigers handed the Razorbacks their first and only loss of the conference regular season with a 4-2 victory. The win solidified LSU's positioning in the SEC and NCAA Tournament and was the highest ranked win in program history.

LSU scored 40 goals on the season while only conceding 25 times in 2021; that goal differential of 15 was the highest for the program since 2009. The 40 goals were the most in program history since 2009 as well. Fourteen different players factored into the scoresheet with goals to match the program record for most individual goals scorers in a single season.

Only three months into her gig at the helm of LSU soccer in March of 2020, the COVID-19 pandemic struck and halted all of collegiate athletics, but Hudson didn't let that deter her. Fast forward five months and the LSU soccer team returned to campus and began practice for the 2020-21 season, its first under Hudson. Hudson's first win of her LSU career came on November 13, 2020, as the Tigers shutout Alabama for a 2-0 win over Alabama in the first round of the SEC Tournament in Orange Beach, Alabama. The Tigers followed that up with a 2-1 win over No. 14 Ole Miss two days later to advance to the SEC quarterfinals in their first SEC Tournament appearance under Hudson's reign.

The 2020-21 season featured fall and spring games counted towards LSU's team record and Hudson made the most of the spring with her team. She led her squad to a record of 6-1-1 in the spring of 2021 and the level of expectation within the program has risen heading into the fall of 2021. The Tigers ended the 2020-21 season with an RPI of 54.

Hudson came to LSU with nearly 20 years of coaching experience. She came to Baton Rouge after serving as the head coach at the University of Colorado at Colorado Springs for the past three seasons. During her time as head coach at UCCS, Hudson led the Mountain Lions to a 52-10-4 record. Each of those three seasons saw UCCS qualify for the NCAA Tournament, the first three appearances in school history, including a run to the national semifinals in 2017. Her win totals in each of the three seasons – 17 in 2017, 16 in 2018, and 19 in 2019 – were the three winningest seasons in program history.

Hudson earned her bachelor's in Sports Coaching Science, majoring in sport psychology from Cardiff Metropolitan University in 2002. She's graduated with her master's degree in sports coaching from the University of Denver in May of 2020.



SIAN HUDSON

HOMETOWN	Newport, Wales
EDUCATION	Cardiff Metropolitan University (2002), University of Denver (2020)
HUSBAND	Rance
CHILDREN	Olivia, Reid

COACHING CAREER

Season	School/Team	Position
2019-Pres.	LSU	Head Coach
2017-19	UCCS	Head Coach
2015-17	Colorado College	Assistant Coach
2014-15	Colorado Pride	General Manager*
2015	Colorado Pride	Head Coach*
2014	Colorado Pride	Assistant Coach*
2002-15	Pride Soccer Club	Director

*Colorado Pride was in the W-League

CAREER RECORD

Season	School/Team	Record
2023	LSU	4-2-0
2022	LSU	10-4-7
2021	LSU	11-8-1
2020-21	LSU	8-8-3
2019	UCCS	19-2-0
2018	UCCS	16-3-3
2017	UCCS	17-5-1
2015	Colorado Pride	11-3-1
Total		96-35-16

SIAN HUDSON 2019-PRESENT



YEAR	OVERALL	SEC
2020-21	8-8-3	0-6-2 (7th SEC West)
2021	11-8-1	4-6 (5th SEC West)
2022	10-4-7	4-2-4 (5th SEC West)
2023	4-2-0	0-0 (CURRENT)
Totals	32-21-11	8-14-6

LSU's Record When Under Sian Hudson

Home.....	16-8-3
Away	12-11-6
Neutral.....	5-3-2

vs. Ranked Opp.	6-7-3
Leading at Half.....	25-2-2
Trailing at Half.....	2-11-3
Tied	4-7-6

Taking More Shots	20-4-2
Taking Fewer Shots.....	9-16-8
Equal Shots	3-1-0
More Corners.....	19-6-2
Less Corners.....	12-12-6
Equal Corners	0-2-3

Scoring First.....	26-2-3
Opp. Scores First	6-18-2

When Scoring Two or More Goals	26-2-3
When Scoring None	0-11-6
When Scoring One Goal.....	4-6-2
When Scoring Two Goals.....	12-2-2
When Scoring Three Goals	6-0-1
When Scoring Four Goals	4-0-0
When Scoring Five Goals	4-0-0
When Scoring Six Goals	1-0-0
When Scoring Eight Goals	1-0-0

LSU's Record Under Sian Hudson vs. SEC Opponents

Home.....	6-6-2
Away	2-8-5
Neutral.....	3-2-2

vs. Ranked Opp.	2-4-2
Leading at Half.....	7-0-1
Trailing at Half.....	1-9-2
Tied	3-6-6

Taking More Shots	4-2-1
Taking Fewer Shots.....	6-14-8
Equal Shots	1-1-0
More Corners.....	3-4-2
Less Corners.....	8-11-5
Equal Corners	0-1-2

Scoring First.....	8-0-1
Opp. Scores First	3-16-2

When Scoring Two or More Goals.....	10-1-2
When Scoring None	0-10-6
When Scoring One Goal.....	1-5-1
When Scoring Two Goals.....	6-1-1
When Scoring Three Goals	1-0-1
When Scoring Four Goals	3-0-0
When Scoring Five+ Goals.....	N/A

TOP 10 ATTENDANCES

- 1** **3,021**
Sept. 17, 2021 vs. Mississippi St
(LSU won 2-0)
- 2** **2,624**
Aug. 24, 2012 vs. Rice (Tied 1-1)
- 3** **2,542**
Sept. 9, 2011 vs. Oregon
(LSU won 1-0)
- 4** **2,402**
Oct. 5, 2007 vs. #6 Tennessee
(LSU won 3-0)
- 5** **2,160**
Sept. 14, 2007 vs. McNeese State
(LSU won 5-0)
- 6** **2,004**
Sept. 22, 2022 vs. Missouri
(W, 2-1)
- 7** **1,982**
Oct. 1, 2010 vs. Alabama
(Tied 0-0)
- 8** **1,910**
Sept. 14, 2012 vs. #10 Texas A&M
(Texas A&M won 1-0)
- 9** **1,828**
Aug. 31, 2007 vs. Southern Miss
(LSU won 3-0)
- 10** **1,689**
Sept. 30, 2005 vs. Ole Miss
(Ole Miss won 1-0)

The LSU Soccer Stadium saw the 2007 and 2015 seasons standing out the most with unbeaten records on the home pitch. 2007 saw the Tigers go 5-0-3 and 2015's unbeaten record at home was 8-0-4.

The impressive run with an unbeaten 5-0-3 home slate in 2007 was followed by an impressive 8-1 campaign in 2008, a 7-1-2 season in 2009, a 6-2-1 mark in 2010 and a stellar 7-1-1 season in 2011. While winning four SEC Western Division championships and making four trips to the NCAA Tournament from 2007-11, the Tigers posted a 33-5-7 record with a .811 winning percentage. They most recently finished the 2015 season unbeaten at home with an 8-0-4 mark in 12 matches played in Baton Rouge.

In fact, LSU's home performance is highlighted by a school record 18-game home unbeaten streak that came to an end on Oct. 26, 2008, with a 2-1 defeat to the No. 6-ranked Florida Gators.

2022 marked the 27th season in the life of the LSU Soccer Stadium, which was first opened on Sept. 13, 1996, when the Tigers hosted SEC rival Tennessee.

The 2021 season saw multiple record breaking moments for the Tigers. LSU had the longest winning streak in the program with eight straight victories. The soccer stadium also saw a record breaking attendance in the 2021 season. In the Tigers match against Mississippi State on September 17, a crowd of 3,021 people showed out to watch the Tigers defeat the Bulldogs 2-0 at home. The attendance marked the highest in program history. LSU averaged 1,334 fans per home match during the 2021 season to set the program record, and that average ranked as the 12th highest in the nation.

In 2022, Hudson continued to shatter LSU Soccer Stadium attendance records as she drew in the sixth largest crowd in program history against Missouri with 2,004 fans on September 22.

YEAR-BY-YEAR RESULTS LSU SOCCER STADIUM

	W	L	T
1995 *	9	2	1
1996	4	4	0
1997	0	9	0
1998	5	5	1
1999	4	6	0
2000	7	3	0
2001	5	2	1
2002	6	2	2
2003	7	2	0
2004	6	5	0
2005	5	3	0
2006	6	2	2
2007	5	0	3
2008	8	1	0
2009	7	1	2
2010	6	2	1
2011	7	1	1
2012	5	5	3
2013	4	3	2
2014	3	6	2
2015	8	0	4
2016	2	6	1
2017	6	4	1
2018	7	1	2
2019	2	5	1
2020-21	2	4	1
2021	5	2	0
2022	6	1	2
Totals	147	87	33

*The 1995 inaugural season was played on the University High field adjacent to the football practice facility

Tigers In The Pro's

The LSU Tigers have eight former players playing professionally across the globe, six of which played under current-head coach Sian Hudson during her time at LSU. Four players play in England's top two tiers, two play for the Houston Dash together in the United States, one plays in Hungary while the final player plays in Switzerland.

The English Four

Four Englishwomen returned to their home countries following their time in the United States and currently represent clubs at the highest level. Two players currently play in the Barclay's Women's Super League, England's highest tier. Shannon Cooke is entering her second season at West Ham United after joining in January while former LSU & West Ham teammate Lucy Parker recently completed a move to Aston Villa in July.



SHANNON COOKE - DEFENDER

West Ham United Women
Time at LSU: 2018-2022



LUCY PARKER - DEFENDER

Aston Villa Women
Time at LSU: 2017-2018
Previous Clubs: West Ham (2021-2023)

The remaining two players play in the FA Women's Championship, the tier just below the WSL. Tinaya Alexander recently completed a move to the London City Lionesses on August 4th while Brenna McPartlan enters her second season with Sunderland after joining the club in the spring.



TINAYA ALEXANDER - FORWARD

London City Lionesses
Time at LSU: 2017-2021
Previous Clubs: Reading FC (2023), Montpellier (2022-23),
Washington Spirit (2022)



BRENNA MCPARTLAN - MIDFIELDER

Burnley Football Club
Time at LSU: 2021-2022



The Houston Connection

Two players currently play in the North American Soccer League, the top tier of soccer in the United States. LSU legend Allysha Chapman is in her 14th season as a professional and her 7th total as a member of the Houston Dash while Lindsy Jennings is in her first professional season after being selected by the Houston Dash in the third round of the NWSL Draft by the club in January. With the pick, Jennings became only the second player in program history to be selected in the NWSL Draft.



LINDSI JENNINGS - DEFENDER

Houston Dash
Time at LSU: 2021-2022



ALLYSHA CHAPMAN - DEFENDER

Houston Dash
Time at LSU: 2009-2011
Previous Clubs: North Carolina Courage (2018), Boston Breakers (2017), Houston Dash (2015-16), Eskilstuna United DFF (2014), IK Sirius FK (2012-13)
International: Canadian National Team

Tigers Take on Europe

Alesia Garcia had a memorable first season as a professional as she helped her club, FTC Női Labdarúgás, claim the league title in Hungary's top women's league after signing with the club in March. Athena Kuehn finished her spring in Spain with SC Huelva before signing with BSC Young Boys Frauen in Switzerland in August.



ATHENA KUEHN - MIDFIELDER

Sporting Club de Huelva
Time at LSU: 2021
Previous Clubs: SC Huelva (2022-23), FC Gintra (2022)



ALESIA GARCIA - FORWARD

FTC NŐI LABDARÚGÁS
Time at LSU: 2021-2022



2023-24 LSU Women's Soccer
Overall Team Statistics
All games

Page 1/1
as of Sep 05, 2023

Game Records

Overall	Conference	Home	Away	Neutral
4 - 2 - 0	0 - 0 - 0	3 - 1 - 0	1 - 1 - 0	0 - 0 - 0

Team statistics

	LSU	OPP
SHOT STATISTICS		
Goals-Shot attempts	18-95	6-44
Goals scored per game	3	1
Shot pct.	.189	.136
Shots on goal-Attempts	49-95	20-44
SOG pct.	.516	.455
Shots/Game	15.8	7.3
Assists	18	4
GOAL BREAKDOWN		
Total Goals	18	6
Penalty	1	1
Unassisted	-	-
Overtime	0	0
Goals scored average	3	1
CORNER KICKS	38	19
PENALTY KICKS	1-1	1-1
OFFSIDES	20	8
PENALTIES		
Fouls	55	58
Yellow cards	4	3
Red cards	0	0
ATTENDANCE		
Total	2853	2538
Dates/Avg Per Date	4/713	2/1269
Neutral Site #/Avg	0/0	-

Goals by Periods

Team	1st	2nd	OT1	OT2	TOTAL
LSU	8	10	0	0	18
Opponents	2	4	0	0	6

Corners by Periods

Team	1st	2nd	OT1	OT2	TOTAL
LSU	16	22	0	0	38
Opponents	12	7	0	0	19

Shots by Periods

Team	1st	2nd	OT1	OT2	TOTAL
LSU	45	50	0	0	95
Opponents	27	17	0	0	44

Fouls by Periods

Team	1st	2nd	OT1	OT2	TOTAL
LSU	24	31	0	0	55
Opponents	32	26	0	0	58

Saves by Periods

Team	1st	2nd	OT1	OT2	TOTAL
LSU	12	2	0	0	14
Opponents	15	16	0	0	31

Offsides by Periods

Team	1st	2nd	OT1	OT2	TOTAL
LSU	18	2	0	0	20
Opponents	4	4	0	0	8



2023-24 LSU Women's Soccer
Extended Individual Statistics
All games

Page 1/2
as of Sep 05, 2023

Game Records

Overall	Conference	Home	Away	Neutral
4 - 2 - 0	0 - 0 - 0	3 - 1 - 0	1 - 1 - 0	0 - 0 - 0

Team Box Score Extended

No.	Player	GP-GS	G	GPG	A	APG	PTS	PPG	SH	SPG	SH%	SOG	SOG/G	SOG%	YC	RC	GWG	PK-ATT
71	Baker, Mollie	6-6	3	0.50	2	0.33	8	1.33	19	3.17	.158	9	1.50	.474	0	0	1	0-0
10	Hermansdottir, Ida	6-4	3	0.50	2	0.33	8	1.33	17	2.83	.176	8	1.33	.471	1	0	1	1-1
18	Major, Kelsey	6-0	2	0.33	1	0.17	5	0.83	5	0.83	.400	2	0.33	.400	0	0	0	0-0
38	Noel, Rammie	6-6	2	0.33	1	0.17	5	0.83	4	0.67	.500	3	0.50	.750	0	0	1	0-0
13	Dobles, Taylor	6-4	2	0.33	0	0.00	4	0.67	10	1.67	.200	8	1.33	.800	0	0	0	0-0
27	Bertram, Britney	6-2	2	0.33	0	0.00	4	0.67	5	0.83	.400	4	0.67	.800	0	0	0	0-0
50	Glover, Sage	6-1	2	0.33	0	0.00	4	0.67	4	0.67	.500	4	0.67	1.000	1	0	1	0-0
23	Prince, Raelyn	5-1	1	0.20	2	0.40	4	0.80	8	1.60	.125	2	0.40	.250	0	0	0	0-0
15	Johnson, Jordan	6-5	1	0.17	2	0.33	4	0.67	7	1.17	.143	2	0.33	.286	0	0	0	0-0
20	Galligan, Ava	6-4	0	0.00	3	0.50	3	0.50	6	1.00	.000	1	0.17	.167	0	0	0	0-0
17	Swierenga, Caley	4-0	0	0.00	2	0.50	2	0.50	1	0.25	.000	0	0.00	.000	0	0	0	0-0
12	Gonzales, Laney	4-0	0	0.00	1	0.25	1	0.25	2	0.50	.000	2	0.50	1.000	0	0	0	0-0
8	Shannon, Danielle	6-5	0	0.00	1	0.17	1	0.17	1	0.17	.000	0	0.00	.000	1	0	0	0-0
9	Gordon, Maya	6-6	0	0.00	1	0.17	1	0.17	1	0.17	.000	1	0.17	1.000	0	0	0	0-0
7	Johnson, Nevaeh	6-2	0	0.00	0	0.00	0	0.00	2	0.33	.000	1	0.17	.500	0	0	0	0-0
25	Smith, Abby	2-0	0	0.00	0	0.00	0	0.00	1	0.50	.000	0	0.00	.000	0	0	0	0-0
21	Gillis, Tori	6-2	0	0.00	0	0.00	0	0.00	1	0.17	.000	1	0.17	1.000	0	0	0	0-0
29	Humbyrd, Jaden	5-2	0	0.00	0	0.00	0	0.00	1	0.20	.000	1	0.20	1.000	1	0	0	0-0
24	Zanotelli, Bella	3-0	0	0.00	0	0.00	0	0.00	0	0.00	.000	0	0.00	.000	0	0	0	0-0
28	Knowles, Brielyn	2-0	0	0.00	0	0.00	0	0.00	0	0.00	.000	0	0.00	.000	0	0	0	0-0
3	Hartman, Hali	6-5	0	0.00	0	0.00	0	0.00	0	0.00	.000	0	0.00	.000	0	0	0	0-0
2	Ollivierre, Jocelyn	6-5	0	0.00	0	0.00	0	0.00	0	0.00	.000	0	0.00	.000	0	0	0	0-0
39	Portis, Sarah	2-0	0	0.00	0	0.00	0	0.00	0	0.00	.000	0	0.00	.000	0	0	0	0-0
1	Swift, Mollee	6-6	0	0.00	0	0.00	0	0.00	0	0.00	.000	0	0.00	.000	0	0	0	0-0
Total		6	18	3.00	18	3.00	54	9.00	95	15.83	.189	49	8.17	.516	4	0	-	1-1
Opponents		6	6	1.00	4	0.67	16	2.67	44	7.33	.136	20	3.33	.455	3	0	-	1-1

##	Player	GP-GS	MINUTES	GA	GA AVG	SAVES	SAVES/G	SAVES%	W	L	T	SHO/CBO
24	Zanotelli, Bella	3-0	71:33	0	0.00	0	0.00	.000	0	0	0	0/2
1	Swift, Mollee	6-6	468:27	6	1.15	12	2.00	.667	4	2	0	0/2
TM	TEAM	-	00:00	0	0.00	2	0.33	1.000	0	0	0	2/0
Total		6	540:00	6	1.00	14	2.33	.700	4	2	0	2
Opponents		6	540:00	18	3.00	31	5.17	.633	2	4	0	2

Goals by Periods

Team	1st	2nd	OT1	OT2	TOTAL
LSU	8	10	0	0	18
Opponents	2	4	0	0	6

Corners by Periods

Team	1st	2nd	OT1	OT2	TOTAL
LSU	16	22	0	0	38
Opponents	12	7	0	0	19

Shots by Periods

Team	1st	2nd	OT1	OT2	TOTAL
LSU	45	50	0	0	95
Opponents	27	17	0	0	44

Fouls by Periods

Team	1st	2nd	OT1	OT2	TOTAL
LSU	24	31	0	0	55
Opponents	32	26	0	0	58



2023-24 LSU Women's Soccer
Extended Individual Statistics
All games

Page 2/2
 as of Sep 05, 2023

Saves by Periods

Team	1st	2nd	OT1	OT2	TOTAL
LSU	12	2	0	0	14
Opponents	15	16	0	0	31

Attendance Summary

	LSU	Opponents
Total	2853	2538
Dates/Avg Per Date	4 / 713	2 / 1269
Neutral Site #/Avg	0 / 0	

Team Results

Date	Opponent		Score	Overall	Conf	Att.	Goals Scored
08/17/2023	South Fla.	L	0-1	0-1-0	0-0-0	1258	-
08/20/2023	Southern Miss.	W	4-1	1-1-0	0-0-0	344	Baker, Mollie Baker, Mollie Hermannsdottir, Ida Hermannsdottir, Ida
08/24/2023	at Texas	W	3-1	2-1-0	0-0-0	1795	Dobles, Taylor Dobles, Taylor Hermannsdottir, Ida
08/27/2023	Southern U.	W	5-0	3-1-0	0-0-0	672	Bertram, Britney Baker, Mollie Noel, Rammie Johnson, Jordan Glover, Sage
08/31/2023	at Wisconsin	L	0-3	3-2-0	0-0-0	743	-
09/03/2023	Tex. A&M-Commerce	W	6-0	4-2-0	0-0-0	579	Glover, Sage Noel, Rammie Prince, Raelyn Major, Kelsey Major, Kelsey Bertram, Britney

Team Record	W-L-T
Overall:	4-2-0
Conference:	0-0-0
Home:	3-1-0
Away:	1-1-0
Neutral:	0-0-0
Overtime:	0-0-0

Attendance	Dates	Total	Avg.
Total:	6	5391	899
Home:	4	2853	713
Away:	2	2538	1269
Neutral:	0	0	0

2023 Career Individual Stats



0 Bailey Hurfurth

Goalkeeper
Redshirt Freshman
Northport, N.Y.
IMG Academy



1 Mollee Swift

Goalkeeper
Graduate Student
Papillion, Nebraska
University of Colorado at Colorado Springs/Papillion-La Vista HS

SWIFT, Mollee

SEASON	TEAM	GP-GS	Min.	G	A	Pts	Shot	Shot%	SOG	SOG%	GW	PK-Att
2019-20	UCCS	19 - 18	1539:11	0	1	1	0	.000	0	.000	0	0 - 0
2020-21	LSU	17 - 17	1512:52	0	0	0	0	.000	0	.000	0	0 - 0
2021-22	LSU	20 - 20	1722:46	1	0	2	1	1.000	1	1.000	1	1 - 1
2022-23	LSU	19 - 19	1693:13	1	0	2	1	1.000	1	1.000	1	1 - 1
2023-24	LSU	6 - 6	468:27	0	0	0	0	.000	0	.000	0	0 - 0
TOTAL FOR LSU		62 - 62	5397:18	2	0	4	2	1.000	2	1.000	2	2 - 2
TOTAL		81 - 80	6936:29	2	1	5	2	1.000	2	1.000	2	2 - 2

SEASON	TEAM	GP-GS	Minutes	GA	GAAvg	Saves	Save%	W	L	T	SHO/CBO
2019-20	UCCS	19 - 18	1539:11	10	0.59	45	.818	16	2	0	6/3
2020-21	LSU	17 - 17	1512:52	16	0.96	80	.833	7	6	3	4/1
2021-22	LSU	20 - 20	1722:46	24	1.26	81	.771	11	8	1	6/2
2022-23	LSU	19 - 19	1693:13	27	1.44	77	.740	7	4	7	5/1
2023-24	LSU	6 - 6	468:27	6	1.16	12	.667	4	2	0	0/2
TOTAL FOR LSU		62 - 62	5397:18	73	1.22	250	.774	29	20	11	15/6
TOTAL		81 - 80	6936:29	83	1.08	295	.780	45	22	11	21/9

Single Game Highs

Statistic	Value	
Points	2	at Kentucky 10/14/21, vs Lamar University 11/11/22
Goals	1	at Kentucky 10/14/21, vs Lamar University 11/11/22
Assists	1	vs Regis (CO) 11/03/19
Shots	1	at Kentucky 10/14/21, vs Lamar University 11/11/22
Saves	10	vs Alabama 11/13/20



2 Jocelyn Ollivierre

Defender

Sophomore

Colorado Springs, Colo.

Air Academy HS

OLLIVIERRE, Jocelyn

SEASON	TEAM	GP-GS	Min.	G	A	Pts	Shot	Shot%	SOG	SOG%	GW	PK-Att
2022-23	LSU	20 - 6	939:19	0	0	0	2	.000	1	.500	0	0 - 0
2023-24	LSU	6 - 5	333:51	0	0	0	0	.000	0	.000	0	0 - 0
TOTAL		26 - 11	1273:10	0	0	0	2	.000	1	.500	0	0 - 0

Single Game Highs

Statistic	Value	
Shots	1	vs Grambling 09/02/22, at Texas A&M 10/06/22



3 Hali Hartman

Defender

Sophomore

Grand Prairie, Texas

Oklahoma/South Grand Prairie HS

HARTMAN, Hali

SEASON	TEAM	GP-GS	Min.	G	A	Pts	Shot	Shot%	SOG	SOG%	GW	PK-Att
2023-24	LSU	6 - 5	384:26	0	0	0	0	.000	0	.000	0	0 - 0
TOTAL		6 - 5	384:26	0	0	0	0	.000	0	.000	0	0 - 0



7 Nevaeh Johnson

Midfielder

Junior

Arlington, Texas

Kennedale HS

JOHNSON, Nevaeh

SEASON	TEAM	GP-GS	Min.	G	A	Pts	Shot	Shot%	SOG	SOG%	GW	PK-Att
2021-22	LSU	5 - 0	96:25	0	1	1	1	.000	1	1.000	0	0 - 0
2022-23	LSU	2 - 0	12:58	0	0	0	0	.000	0	.000	0	0 - 0
2023-24	LSU	6 - 2	213:40	0	0	0	2	.000	1	.500	0	0 - 0
TOTAL		13 - 2	323:03	0	1	1	3	.000	2	.667	0	0 - 0

Single Game Highs

Statistic	Value	
Points	1	vs Sam Houston 08/22/21
Assists	1	vs Sam Houston 08/22/21
Shots	1	at Louisiana 09/09/21, vs Southern Miss. 08/20/23, at Texas 08/24/23



8 Danielle Shannon

Midfielder

Redshirt Freshman

Houston, Texas

Houston Dash Academy

SHANNON, Danielle

SEASON	TEAM	GP-GS	Min.	G	A	Pts	Shot	Shot%	SOG	SOG%	GW	PK-Att
2022-23	LSU	5 - 2	199:20	0	0	0	1	.000	0	.000	0	0 - 0
2023-24	LSU	6 - 5	337:07	0	1	1	1	.000	0	.000	0	0 - 0
TOTAL		11 - 7	536:27	0	1	1	2	.000	0	.000	0	0 - 0

Single Game Highs

Statistic	Value	
Points	1	vs Southern Miss. 08/20/23
Assists	1	vs Southern Miss. 08/20/23
Shots	1	vs SFA 08/18/22, at Texas 08/24/23



9 Maya Gordon

Defender

Graduate Student

Fort Lauderdale, Fla.

Cypress Bay HS

GORDON, Maya

SEASON	TEAM	GP-GS	Min.	G	A	Pts	Shot	Shot%	SOG	SOG%	GW	PK-Att
2019-20	LSU	10 - 8	671:15	0	0	0	1	.000	0	.000	0	0 - 0
2020-21	LSU	17 - 14	1439:49	0	0	0	3	.000	2	.667	0	0 - 0
2021-22	LSU	20 - 19	1342:27	0	1	1	2	.000	1	.500	0	0 - 0
2022-23	LSU	19 - 18	1321:31	0	1	1	4	.000	0	.000	0	0 - 0
2023-24	LSU	6 - 6	393:57	0	1	1	1	.000	1	1.000	0	0 - 0
TOTAL		72 - 65	5168:59	0	3	3	11	.000	4	.364	0	0 - 0

Single Game Highs

Statistic	Value	
Points	1	vs Sam Houston 08/22/21, at Southern Miss. 09/04/22, vs Southern U. 08/27/23
Assists	1	vs Sam Houston 08/22/21, at Southern Miss. 09/04/22, vs Southern U. 08/27/23
Shots	2	vs Ole Miss 10/30/22



10 Ida Hermannsdottir

Midfielder

Sophomore

Reykjavik, Iceland

Valur Reykjavik

HERMANNSDOTTIR, Ida

SEASON	TEAM	GP-GS	Min.	G	A	Pts	Shot	Shot%	SOG	SOG%	GW	PK-Att
2022-23	LSU	19 - 16	1254:38	7	2	16	23	.304	16	.696	2	1 - 1
2023-24	LSU	6 - 4	341:06	3	2	8	17	.176	8	.471	1	1 - 1
TOTAL		25 - 20	1595:44	10	4	24	40	.250	24	.600	3	2 - 2

Single Game Highs

Statistic	Value	
Points	4	vs Grambling 09/02/22, vs Southern Miss. 08/20/23
Goals	2	vs Grambling 09/02/22, vs Southern Miss. 08/20/23
Assists	1	4 times
Shots	5	vs Tex. A&M-Commerce 09/03/23



11 Angelina Thoreson

Forward

Sophomore

Uppsala, Sweden

IK Uppsala

THORESON, Angelina

SEASON	TEAM	GP-GS	Min.	G	A	Pts	Shot	Shot%	SOG	SOG%	GW	PK-Att
2022-23	LSU	21 - 17	1240:15	1	9	11	29	.034	13	.448	1	0 - 0
TOTAL		21 - 17	1240:15	1	9	11	29	.034	13	.448	1	0 - 0

Single Game Highs

Statistic	Value	
Points	2	at Princeton 09/08/22
Goals	1	at Princeton 09/08/22
Assists	1	9 times
Shots	5	at Rutgers 09/11/22



12 Laney Gonzales

Defender

Sophomore

Magnolia, Texas

Magnolia HS

GONZALES, Laney

SEASON	TEAM	GP-GS	Min.	G	A	Pts	Shot	Shot%	SOG	SOG%	GW	PK-Att
2022-23	LSU	15 - 0	369:46	0	1	1	6	.000	1	.167	0	0 - 0
2023-24	LSU	4 - 0	166:40	0	1	1	2	.000	2	1.000	0	0 - 0
TOTAL		19 - 0	536:26	0	2	2	8	.000	3	.375	0	0 - 0

Single Game Highs

Statistic	Value	
Points	1	vs Grambling 09/02/22, vs Tex. A&M-Commerce 09/03/23
Assists	1	vs Grambling 09/02/22, vs Tex. A&M-Commerce 09/03/23
Shots	2	vs Grambling 09/02/22



13 Taylor Dobles

Forward

RS Senior

Pembroke Pines, Florida

American Heritage

DOBLES, Taylor

SEASON	TEAM	GP-GS	Min.	G	A	Pts	Shot	Shot%	SOG	SOG%	GW	PK-Att
2020-21	LSU	18 - 14	1057:53	3	2	8	18	.167	10	.556	1	0 - 0
2021-22	LSU	19 - 1	463:00	0	0	0	7	.000	2	.286	0	0 - 0
2022-23	LSU	21 - 9	880:37	2	2	6	12	.167	6	.500	1	0 - 0
2023-24	LSU	6 - 4	269:59	2	0	4	10	.200	8	.800	0	0 - 0
TOTAL		64 - 28	2671:30	7	4	18	47	.149	26	.553	2	0 - 0

Statistic	Value	
Points	4	vs Alabama 11/13/20, vs SFA 08/18/22, at Texas 08/24/23
Goals	2	vs Alabama 11/13/20, vs SFA 08/18/22, at Texas 08/24/23
Assists	1	4 times
Shots	3	4 times



15 Jordan Johnson

Midfielder

Senior

Denver, Colorado

Prairie View HS

JOHNSON, Jordan

SEASON	TEAM	GP-GS	Min.	G	A	Pts	Shot	Shot%	SOG	SOG%	GW	PK-Att
2020-21	LSU	17 - 5	627:22	0	0	0	12	.000	6	.500	0	0 - 0
2021-22	LSU	14 - 3	430:35	1	1	3	9	.111	3	.333	0	0 - 0
2022-23	LSU	20 - 2	617:47	1	1	3	17	.059	8	.471	0	0 - 0
2023-24	LSU	6 - 5	373:24	1	2	4	7	.143	2	.286	0	0 - 0
TOTAL		57 - 15	2049:07	3	4	10	45	.067	19	.422	0	0 - 0

Single Game Highs

Statistic	Value	
Points	3	vs Southern U. 08/27/23
Goals	1	vs Southern Miss. 08/19/21, vs SFA 08/18/22, vs Southern U. 08/27/23
Assists	1	4 times
Shots	3	4 times



17 Caley Swierenga

Defender

Freshman

Denver, Colorado

Lutheran HS

SWIERENGA, Caley

SEASON	TEAM	GP-GS	Min.	G	A	Pts	Shot	Shot%	SOG	SOG%	GW	PK-Att
2023-24	LSU	4 - 0	128:27	0	2	2	1	.000	0	.000	0	0 - 0
TOTAL		4 - 0	128:27	0	2	2	1	.000	0	.000	0	0 - 0

Single Game Highs

Statistic	Value	
Points	2	vs Tex. A&M-Commerce 09/03/23
Assists	2	vs Tex. A&M-Commerce 09/03/23
Shots	1	vs Tex. A&M-Commerce 09/03/23



18 Kelsey Major

Midfielder

Redshirt Freshman

New Orleans, La.

St. Mary's Dominican HS

MAJOR, Kelsey

SEASON	TEAM	GP-GS	Min.	G	A	Pts	Shot	Shot%	SOG	SOG%	GW	PK-Att
2023-24	LSU	6 - 0	167:04	2	1	5	5	.400	2	.400	0	0 - 0
TOTAL		6 - 0	167:04	2	1	5	5	.400	2	.400	0	0 - 0

Single Game Highs

Statistic	Value	
Points	4	vs Tex. A&M-Commerce 09/03/23
Goals	2	vs Tex. A&M-Commerce 09/03/23
Assists	1	vs Southern Miss. 08/20/23
Shots	4	vs Tex. A&M-Commerce 09/03/23



19 Andrea Ilijkic

Forward

Freshman

Littleton, Colo.

Columbine HS



20 Ava Galligan

Forward/Midfielder

Freshman

Ashburn, Va.

Independence HS

GALLIGAN, Ava

SEASON	TEAM	GP-GS	Min.	G	A	Pts	Shot	Shot%	SOG	SOG%	GW	PK-Att
2023-24	LSU	6 - 4	327:55	0	3	3	6	.000	1	.167	0	0 - 0
TOTAL		6 - 4	327:55	0	3	3	6	.000	1	.167	0	0 - 0

Single Game Highs

Statistic	Value	
Points	1	vs Southern Miss. 08/20/23, at Texas 08/24/23, vs Southern U. 08/27/23
Assists	1	vs Southern Miss. 08/20/23, at Texas 08/24/23, vs Southern U. 08/27/23
Shots	3	vs Southern U. 08/27/23



21 Tori Gillis

Midfielder

Junior

Leesburg, Va.

Loudon County HS

GILLIS, Tori

SEASON	TEAM	GP-GS	Min.	G	A	Pts	Shot	Shot%	SOG	SOG%	GW	PK-Att
2022-23	LSU	2 - 0	14:42	0	0	0	0	.000	0	.000	0	0 - 0
2023-24	LSU	6 - 2	308:25	0	0	0	1	.000	1	1.000	0	0 - 0
TOTAL		8 - 2	323:07	0	0	0	1	.000	1	1.000	0	0 - 0

Single Game Highs

Statistic	Value	
Shots	1	at Wisconsin 08/31/23



23 Raelyn Prince

Midfielder

Sophomore

Titusville, Fla.

Titusville HS

PRINCE, Raelyn

SEASON	TEAM	GP-GS	Min.	G	A	Pts	Shot	Shot%	SOG	SOG%	GW	PK-Att
2022-23	LSU	18 - 5	661:23	2	2	6	18	.111	7	.389	1	0 - 0
2023-24	LSU	5 - 1	192:25	1	2	4	8	.125	2	.250	0	0 - 0
TOTAL		23 - 6	853:48	3	4	10	26	.115	9	.346	1	0 - 0

Single Game Highs

Statistic	Value	
Points	3	at San Diego 08/28/22, vs Tex. A&M-Commerce 09/03/23
Goals	1	at San Diego 08/28/22, vs Missouri 09/22/22, vs Tex. A&M-Commerce 09/03/23
Assists	1	4 times
Shots	3	at Southern Miss. 09/04/22, vs Southern Miss. 08/20/23, vs Tex. A&M-Commerce 09/03/23



24 Bella Zanolelli

Goalkeeper

Senior

Pueblo West, Colo.

Cheyenne Mountain HS

ZANOTELLI, Bella

SEASON	TEAM	GP-GS	Min.	G	A	Pts	Shot	Shot%	SOG	SOG%	GW	PK-Att
2020-21	LSU	4 - 2	270:00	0	0	0	0	.000	0	.000	0	0 - 0
2021-22	LSU	2 - 0	63:52	0	0	0	0	.000	0	.000	0	0 - 0
2022-23	LSU	6 - 2	216:47	0	0	0	0	.000	0	.000	0	0 - 0
2023-24	LSU	3 - 0	71:33	0	0	0	0	.000	0	.000	0	0 - 0
TOTAL		15 - 4	622:12	0	0	0	0	.000	0	.000	0	0 - 0

SEASON	TEAM	GP-GS	Minutes	GA	GAAvg	Saves	Save%	W	L	T	SHO/CBO
2020-21	LSU	4 - 2	270:00	4	1.34	9	.692	1	2	0	1/1
2021-22	LSU	2 - 0	63:52	1	1.41	2	.667	0	0	0	0/1
2022-23	LSU	6 - 2	216:47	2	0.84	5	.714	3	0	0	0/1
2023-24	LSU	3 - 0	71:33	0	0	0	.000	0	0	0	0/2
TOTAL		15 - 4	622:12	7	1.02	16	.696	4	2	0	1/5

Single Game Highs

Statistic	Value	
Saves	4	vs Missouri 09/22/22



25 Abby Smith

Midfielder

Senior

Flower Mound, Texas

Flower Mound HS

SMITH, Abby

SEASON	TEAM	GP-GS	Min.	G	A	Pts	Shot	Shot%	SOG	SOG%	GW	PK-Att
2020-21	LSU	5 - 0	144:52	0	0	0	4	.000	2	.500	0	0 - 0
2022-23	LSU	2 - 0	14:06	0	0	0	0	.000	0	.000	0	0 - 0
2023-24	LSU	2 - 0	36:13	0	0	0	1	.000	0	.000	0	0 - 0
TOTAL		9 - 0	195:11	0	0	0	5	.000	2	.400	0	0 - 0

Single Game Highs

Statistic	Value	
Shots	4	vs Southern U. 03/05/21



27 Britney Bertram

Forward
Graduate Student
Slidell, Louisiana
Northshore HS

BERTRAM, Britney

SEASON	TEAM	GP-GS	Min.	G	A	Pts	Shot	Shot%	SOG	SOG%	GW	PK-Att
2019-20	Stet	12 - 6	602:22	0	1	1	12	.000	3	.250	0	0 - 0
2020-21	Stet	9 - 6	578:08	1	1	3	9	.111	4	.444	0	0 - 0
2022-23	LSU	8 - 0	140:17	0	0	0	1	.000	1	1.000	0	0 - 0
2023-24	LSU	6 - 2	202:20	2	0	4	5	.400	4	.800	0	0 - 0
TOTAL FOR LSU		14 - 2	342:37	2	0	4	6	.333	5	.833	0	0 - 0
TOTAL		35 - 14	1523:07	3	2	8	27	.111	12	.444	0	0 - 0

Single Game Highs

Statistic	Value	
Points	2	at Jacksonville 02/28/21, vs Southern U. 08/27/23, vs Tex. A&M-Commerce 09/03/23
Goals	1	at Jacksonville 02/28/21, vs Southern U. 08/27/23, vs Tex. A&M-Commerce 09/03/23
Assists	1	vs Rollins 08/25/19, vs Ga. Southern 02/13/21
Shots	3	vs Ga. Southern 09/05/19



28 Brielyn Knowles

Midfielder
Freshman
Orlando, Fla.
Windermere Preparatory School

KNOWLES, Brielyn

SEASON	TEAM	GP-GS	Min.	G	A	Pts	Shot	Shot%	SOG	SOG%	GW	PK-Att
2023-24	LSU	2 - 0	50:06	0	0	0	0	.000	0	.000	0	0 - 0
TOTAL		2 - 0	50:06	0	0	0	0	.000	0	.000	0	0 - 0



29 Jaden Humbyrd

Midfielder
Junior
Issaquah, Washington
Issaquah HS

HUMBYRD, Jaden

SEASON	TEAM	GP-GS	Min.	G	A	Pts	Shot	Shot%	SOG	SOG%	GW	PK-Att
2022-23	LSU	14 - 6	464:02	0	0	0	3	.000	1	.333	0	0 - 0
2023-24	LSU	5 - 2	218:36	0	0	0	1	.000	1	1.000	0	0 - 0
TOTAL		19 - 8	682:38	0	0	0	4	.000	2	.500	0	0 - 0

Single Game Highs

Statistic	Value	
Shots	1	4 times



32 Alyson Campbell

Goalkeeper
Freshman
Boulder, Colo.
Fairview HS



38 Rammie Noel

Defender
Graduate Student
Lafayette, La.
Acadiana HS

NOEL, Rammie

SEASON	TEAM	GP-GS	Min.	G	A	Pts	Shot	Shot%	SOG	SOG%	GW	PK-Att
2019-20	LSU	18 - 15	1387:03	1	1	3	8	.125	5	.625	0	0 - 0
2020-21	LSU	19 - 14	1322:04	1	0	2	10	.100	6	.600	0	0 - 0
2021-22	LSU	20 - 13	1144:25	3	3	9	6	.500	4	.667	0	0 - 0
2022-23	LSU	19 - 18	1116:16	1	2	4	7	.143	3	.429	0	0 - 0
2023-24	LSU	6 - 6	372:32	2	1	5	4	.500	3	.750	1	0 - 0
TOTAL		82 - 66	5342:21	8	7	23	35	.229	21	.600	1	0 - 0

Single Game Highs

Statistic	Value	
Points	2	9 times
Goals	1	8 times
Assists	2	at South Fla. 08/26/21
Shots	4	vs Mississippi St. 10/24/19

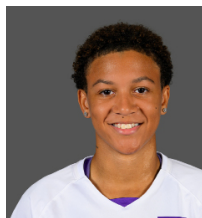


39 Sarah Portis

Defender
Redshirt Sophomore
Anaheim, Calif.
Dana Hills HS

PORTIS, Sarah

SEASON	TEAM	GP-GS	Min.	G	A	Pts	Shot	Shot%	SOG	SOG%	GW	PK-Att
2023-24	LSU	2 - 0	13:37	0	0	0	0	.000	0	.000	0	0 - 0
TOTAL		2 - 0	13:37	0	0	0	0	.000	0	.000	0	0 - 0



50 Sage Glover

Forward

Sophomore

Atlanta, Ga.

North Atlanta HS

GLOVER, Sage

SEASON	TEAM	GP-GS	Min.	G	A	Pts	Shot	Shot%	SOG	SOG%	GW	PK-Att
2022-23	LSU	21 - 7	755:06	4	0	8	14	.286	8	.571	0	0 - 0
2023-24	LSU	6 - 1	212:48	2	0	4	4	.500	4	1.000	1	0 - 0
TOTAL		27 - 8	967:54	6	0	12	18	.333	12	.667	1	0 - 0

Single Game Highs

Statistic	Value
Points	2 6 times
Goals	1 6 times
Shots	3 vs SFA 08/18/22



71 Mollie Baker

Forward

Redshirt Junior

Gilbert, Ariz.

North Carolina/Williams Field HS

BAKER, Mollie

SEASON	TEAM	GP-GS	Min.	G	A	Pts	Shot	Shot%	SOG	SOG%	GW	PK-Att
2020-21	UNC	7 - 0	110:07	0	0	0	9	.000	5	.556	0	0 - 0
2021-22	UNC	7 - 0	99:20	0	1	1	4	.000	2	.500	0	0 - 0
2022-23	LSU	21 - 9	1103:31	4	6	14	48	.083	17	.354	1	0 - 0
2023-24	LSU	6 - 6	363:08	3	2	8	19	.158	9	.474	1	0 - 0
TOTAL FOR LSU		27 - 15	1466:39	7	8	22	67	.104	26	.388	2	0 - 0
TOTAL		41 - 15	1676:06	7	9	23	80	.088	33	.413	2	0 - 0

Single Game Highs

Statistic	Value
Points	5 vs Southern Miss. 08/20/23
Goals	2 vs Southern Miss. 08/20/23
Assists	1 9 times
Shots	6 vs Kentucky 10/02/22